



MAR
21ST

Rail and Transit



Regional Listening Sessions



**Kickoff
Webinar**

Holly Cohen
Liz Stutts

PURPOSE



Gather input on how rail and transit should function as part of an integrated, statewide and regional transportation system



Gather input on the roles and responsibilities of FDOT and other partners



Strengthen collaboration to advance rail and transit priorities





AGENDA

01 Florida's Transportation Vision

02 Rail & Transit System Overview & Strategies

03 Next Steps



DISCUSSION GUIDELINES

 **GoTo**Webinar

**Your feedback
is important
to us**

**Use
GoToWebinar
platform to
respond to
poll questions**

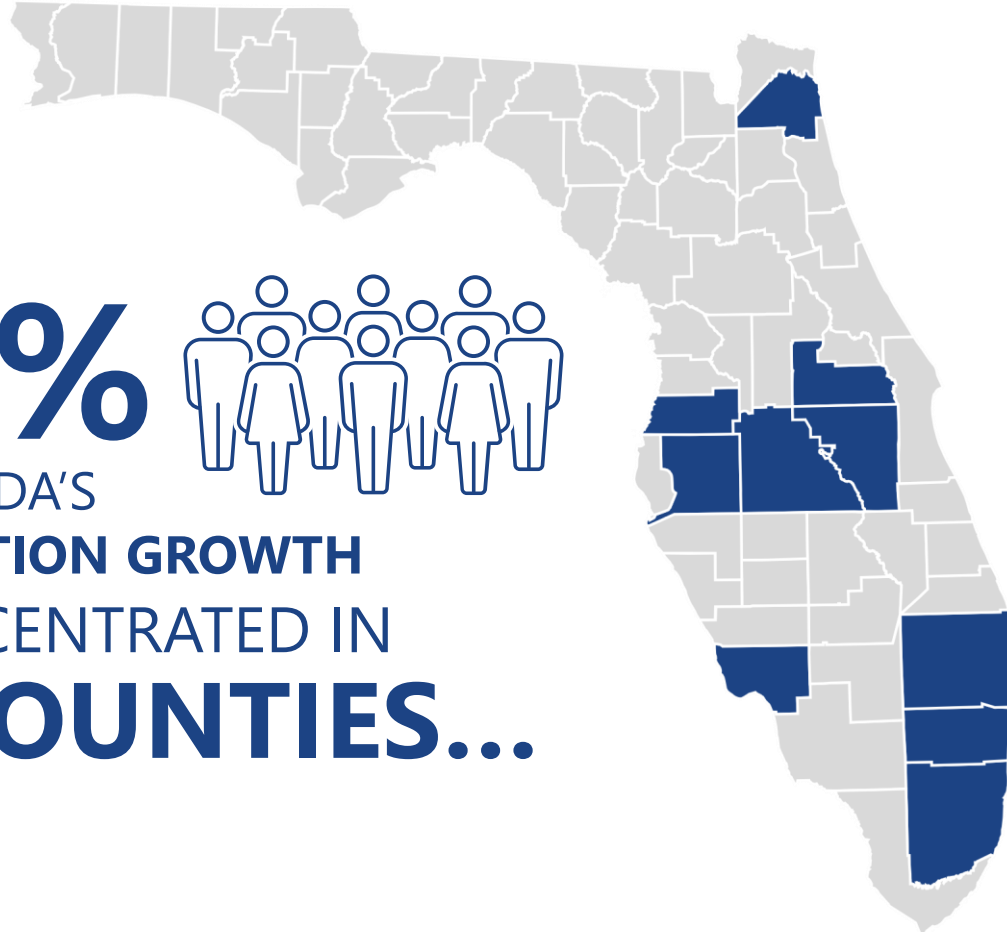
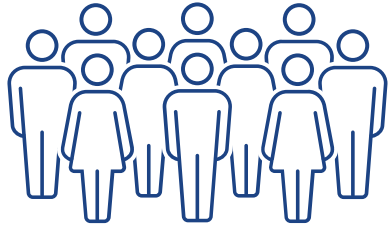
**Attendees
raise hand to
make a
comment at
end of session**

**We are
taking notes**

POPULATION

FLORIDA'S FASTEST GROWING COUNTIES

59%
OF FLORIDA'S
POPULATION GROWTH
IS CONCENTRATED IN
10 COUNTIES...

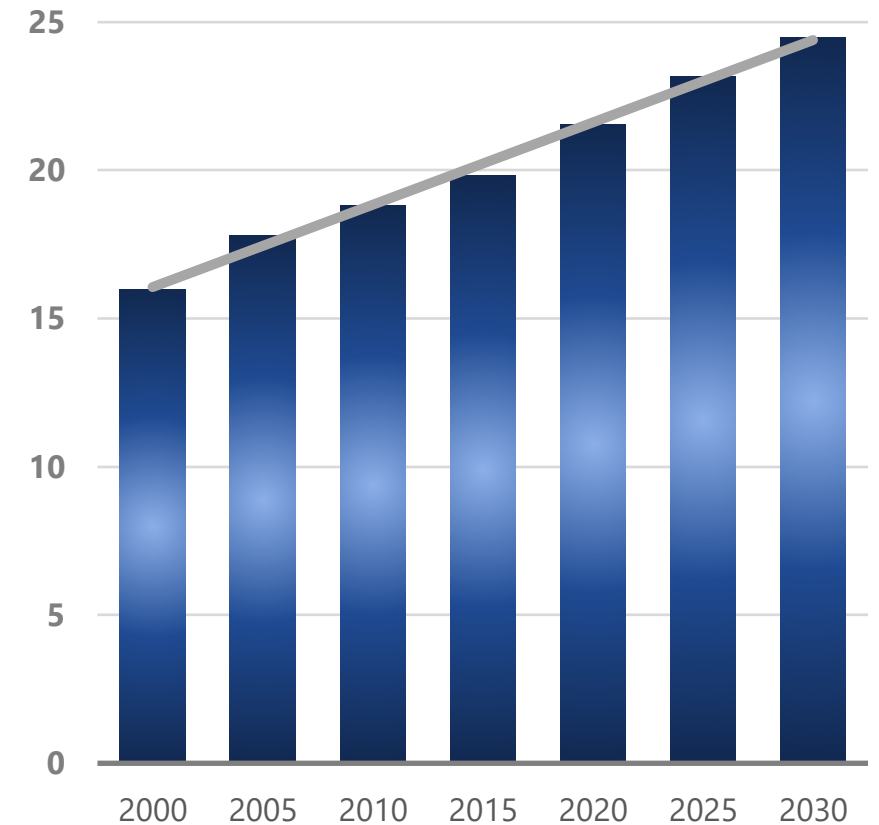


Source: Bureau of Economic and Business Research.

Powered by Bing
© GeoNames, Microsoft, TomTom

FLORIDA POPULATION GROWTH

MILLIONS

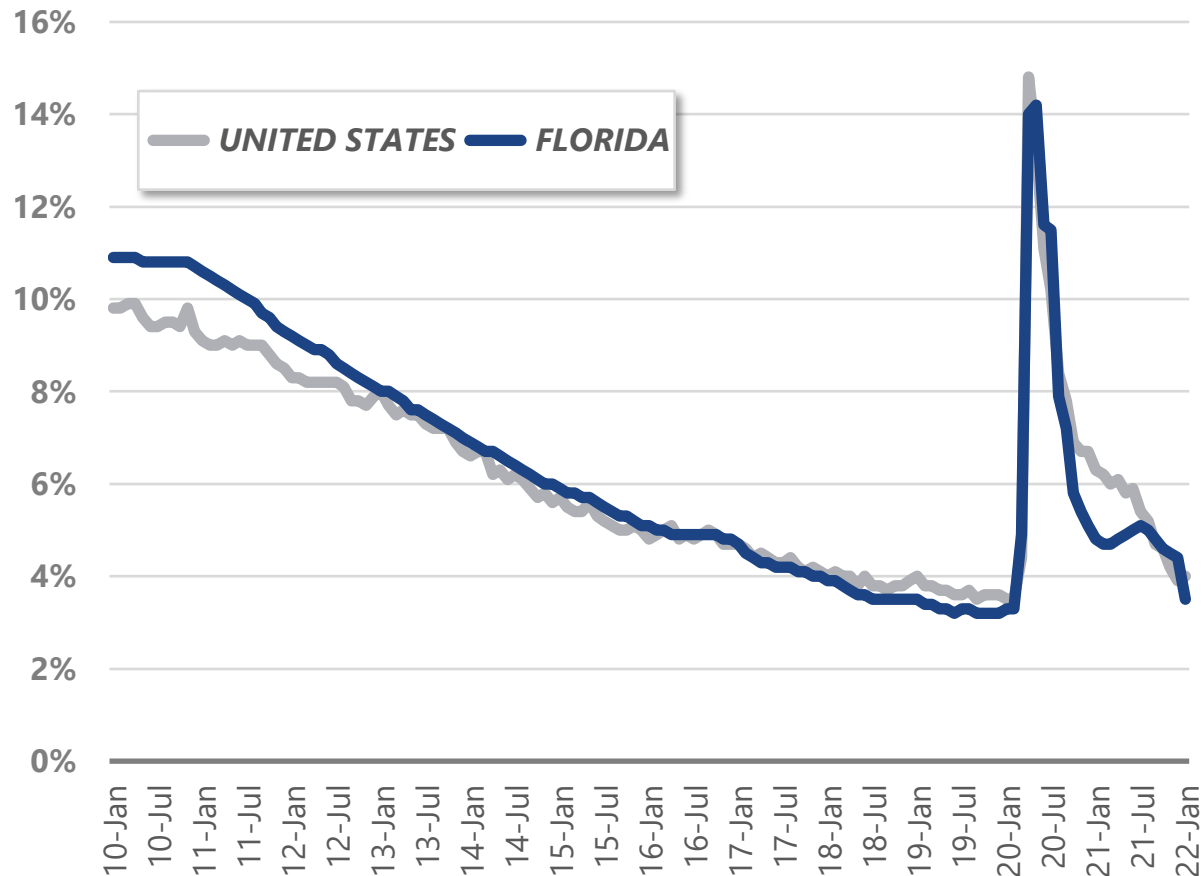


Source: Bureau of Economic and Business Research.

ECONOMY

UNEMPLOYMENT RATES – FLORIDA AND U.S.

January 2010 through August 2021



Source: U.S. Department of Labor.



**383,000
JOBS**

WITHIN A
30-MINUTE
AUTOMOBILE TRIP

**7,400
JOBS**
WITHIN A
30-MINUTE
TRANSIT TRIP



Source: FDOT Sourcebook.

MOBILITY



TRUCK ACTIVITY
WAS
7%
HIGHER
IN OCTOBER 2021

Source: Florida Department of Transportation



TRANSIT RIDERSHIP
IS
40%
LOWER
THAN 2019

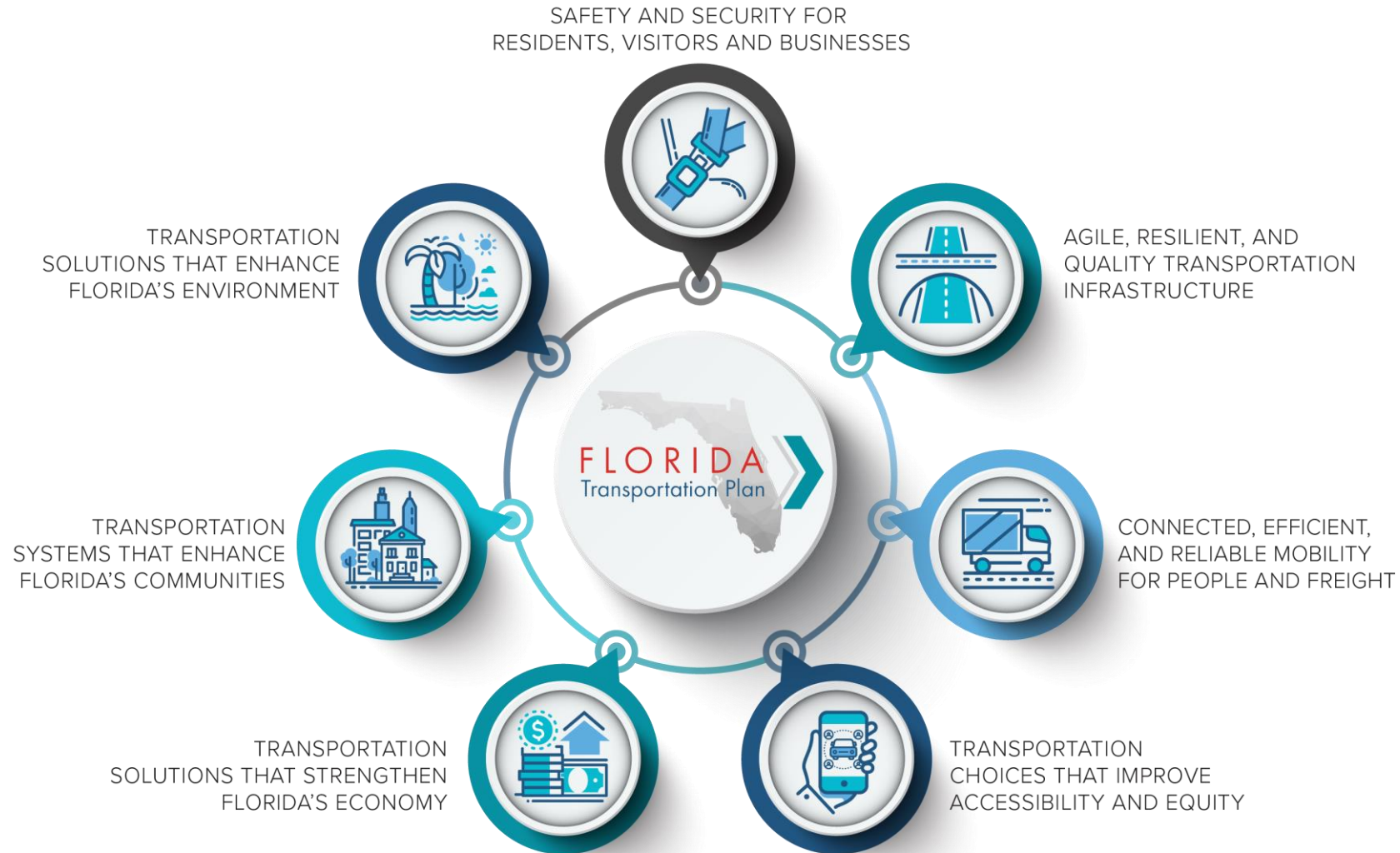
Source: Florida Department of Transportation



AIR TRAVEL
HAS
REMAINED
FLAT

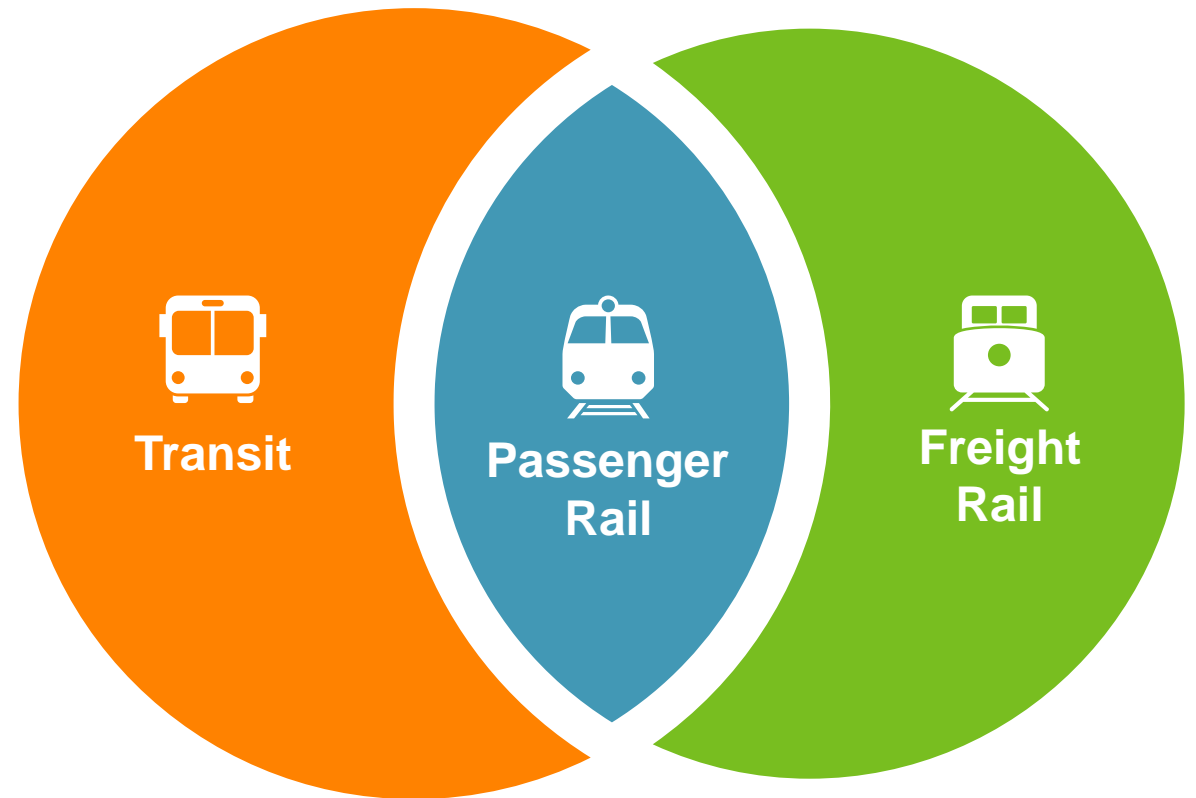
Source: Florida Department of Transportation

FLORIDA'S TRANSPORTATION VISION





MULTIMODAL CONNECTIVITY



TRANSIT



Urban



Rural



Intercity

217.6 Million passenger trips (2019)

INDUSTRY TRENDS



Declining Ridership



New Mobility



**Mobility as a Service and
Advanced Technologies**

POTENTIAL TRANSIT STRATEGIES



Include High-Capacity Premium Transit in Integrated Mobility Corridors



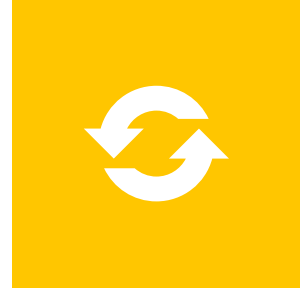
Integrate Technology and Emerging Mobility



Encourage Regionalism



Enhance Access to Activity Centers, Facilities and Services



Encourage Co-location with Other Modes



PASSENGER RAIL



Intercity



Regional

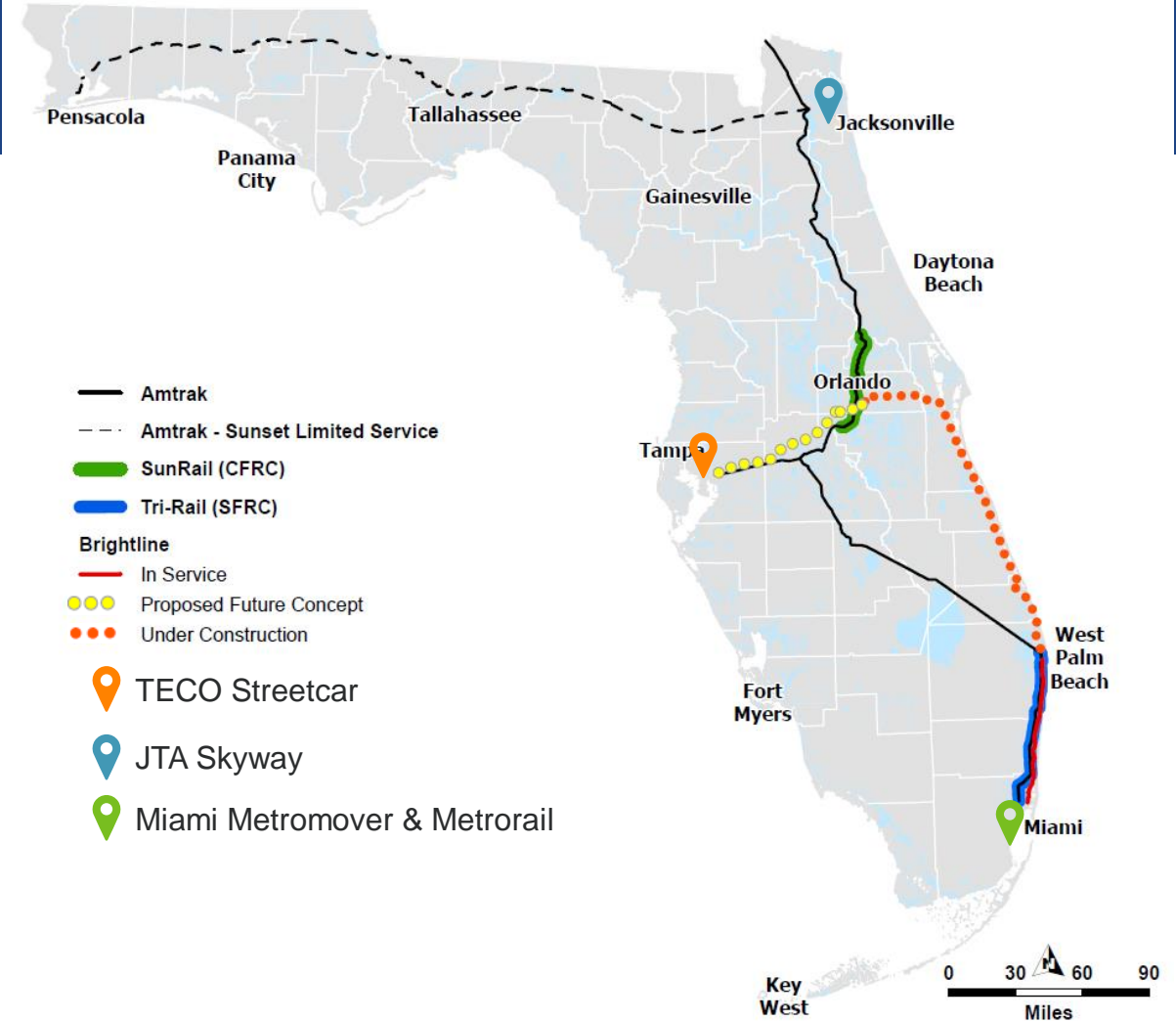


Urban

Providers



brightline



7.8 Million Rail Passengers (2019)

INDUSTRY TRENDS



New Federal Funding



Sustainability Focus



Safe and Reliable Mobility

POTENTIAL PASSENGER RAIL STRATEGIES



Create
Intercity
Hybrid
Model



Preserve
Corridors



Lead
Regional
Efforts



Ensure
Regional/
Local
Funding
Mechanisms



Assistance
to Local
Partners



Balance
Needs of
All Users



FREIGHT RAIL

Class I

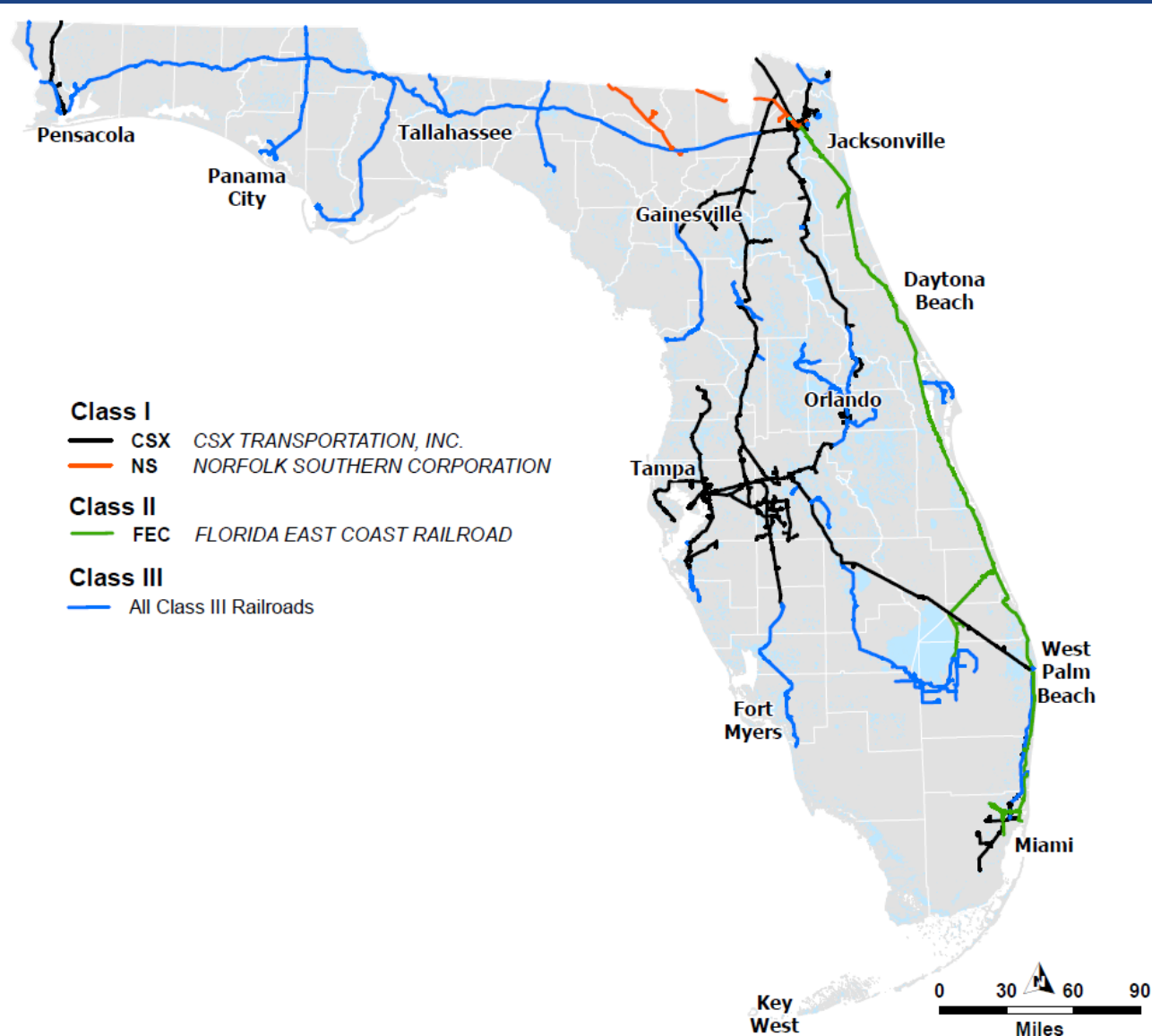
Class II

Class III

Partners

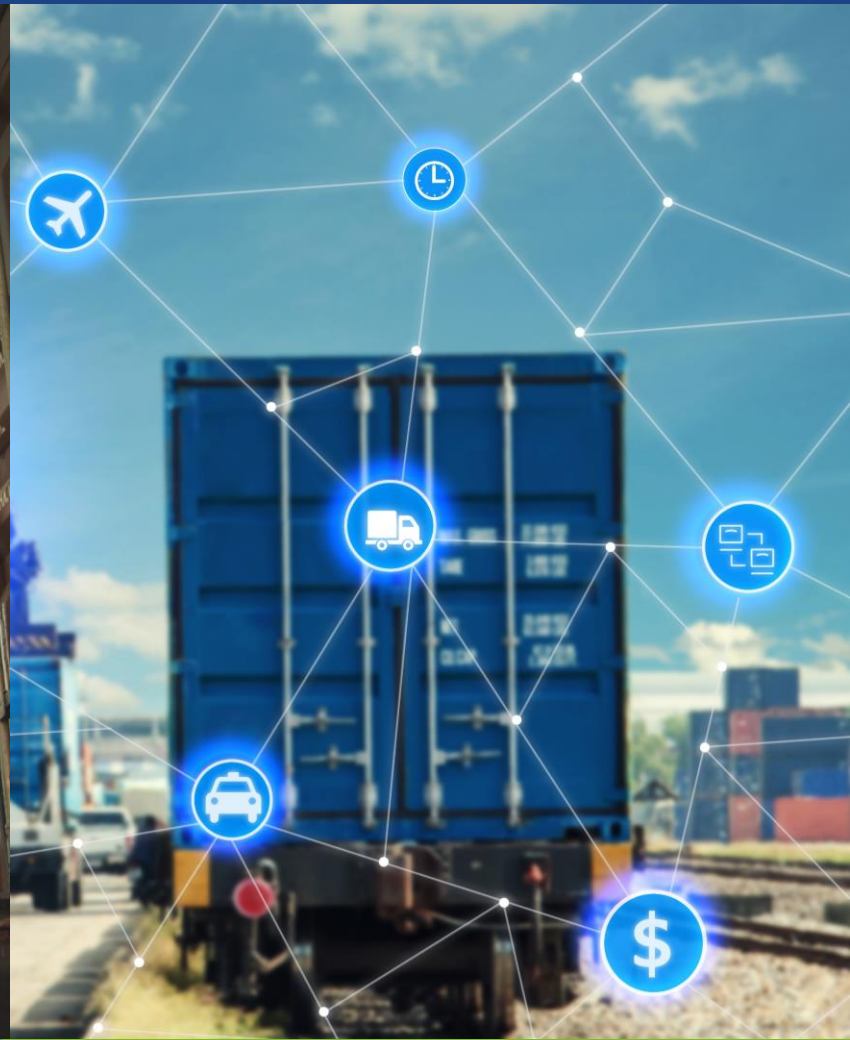


Florida
East Coast
RAILWAY



78 Million tons (2019)

INDUSTRY TRENDS



Partnership with Passenger Rail

Industry Consolidation

Technology / Decarbonization

POTENTIAL FREIGHT RAIL STRATEGIES



Safety



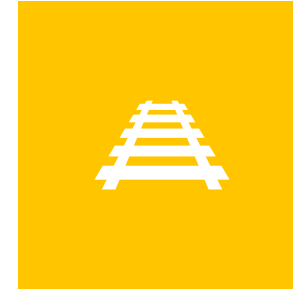
Liability



Capacity



Funding



New Rail
Access



Economic
Development



LISTENING SESSIONS



MAR 29TH

APR 6TH

APR 7TH

APR 12TH

APR 13TH

APR 26TH

TBA

Jacksonville
FDOT
District Two
Headquarters
Training Room
1:00- 4:00 PM

Lakeland
Magnolia Building
9:00 AM –
12:00 PM

Longwood
Longwood
Community
Building
9:00 AM –
12:00 PM

Ft. Myers
Riverside
Community
Center
9:00 AM –
12:00 PM

Aventura Miami
Aventura Branch
Library
1:00- 4:00 PM

Marianna
Jackson County
Agriculture Center
9:00 AM –
12:00 PM

**Statewide
Closing**
Virtual
GoToWebinar
TBA

For more information and to register: [FDOT.gov/rail-transit-listening](https://www.floridadot.gov/rail-transit-listening)

A high-speed train is shown in motion, blurred to convey speed. The train is moving along a track with gravel ballast and overhead power lines. The word "QUESTIONS" is overlaid in the center of the image in a large, white, bold, sans-serif font. The background is a clear blue sky.

QUESTIONS

NEXT STEPS



**Send Additional
Comments to**

RAIL @dot.state.fl.us
fdot.transit@dot.state.fl.us



**Continue the
Conversation**



CLEARING THE PATH FOR A SAFER JOURNEY.

Dynamic Envelopes are pavement markings used to decrease unsafe stopping behavior for motorists, bicyclists, and pedestrians near railroad crossings. These white markings, coated with reflective glass powder, indicate the clearance needed for trains to safely pass.

Dynamic Envelopes reduce vehicles stopped on or too close to the tracks by at least 15%.*

*According to FDOT Pilot Program

