



FLORIDA'S FREIGHT MOBILITY & TRADE PLAN

Regional Freight Forum Series

District 4 – June 30, 2023



- Welcome
- The Statewide Freight Plan
- The Regional Perspective
- Breakout Session
- Concluding Remarks

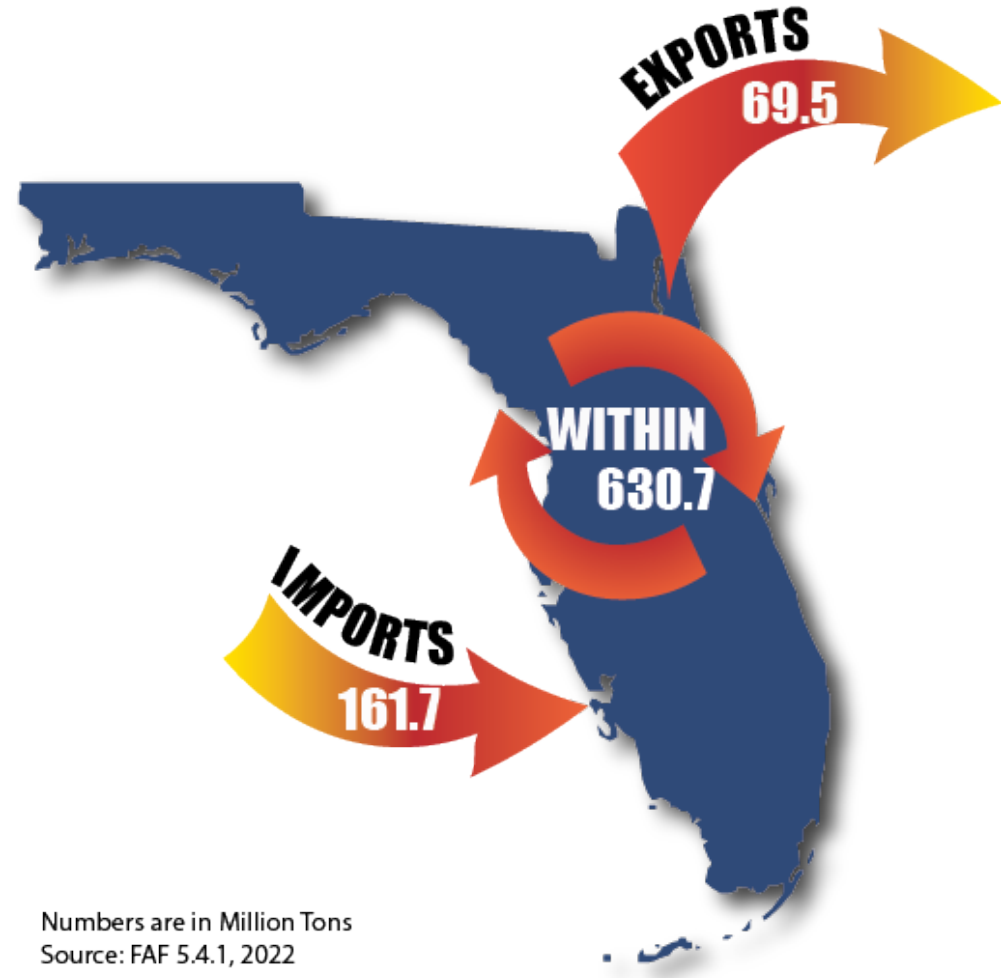
AGENDA

THE STATEWIDE FREIGHT PLAN



The Importance of Freight

- Freight impacts your everyday life
- Florida's freight system is critical to the economic vitality of the state
- As the third most populous state in the U.S., Florida consumes a significant amount of goods and commodities
- Florida is strategically positioned as a regional and national gateway



Numbers are in Million Tons
Source: FAF 5.4.1, 2022

Why Plan for Freight?

Purpose

- Identify freight mobility issues and needs
- Develop policies, programs and projects
- Support economic development and commercial trade
- Fulfill federal regulations

Characteristics

- Multimodal – all freight modes
- Intermodal connectivity
- Understandable & pragmatic
- Implementable plan
- Supports on-going planning
- Prioritization: Highest needs matched with project selection

Cohesion

- Supports LRTP
- Aligns with modal plans: Rail, Highway, Maritime, Space and Air
- Supports federal freight goals
- Provides support & guidance for local freight planning/District plans

What is the FMTP?

- A comprehensive plan that focuses on the movement of goods in, out, and around Florida
- Identifies freight transportation facilities critical to the state's economic growth and guides multimodal freight investments in the state
- Required to receive funding under the National Highway Freight Program



A Brief History

2012

MAP-21 established national freight policy and goals and a formal national freight network. Florida's House Bill 599 directed the State to create a freight plan.

2013/14

Florida published its first Statewide Freight Plan



2015

The FAST Act created a National Multimodal Freight Network and dedicated freight funding through the National Highway Freight Program.

2017

A freight office was established within FDOT.

2020

Florida published its second FMTP.



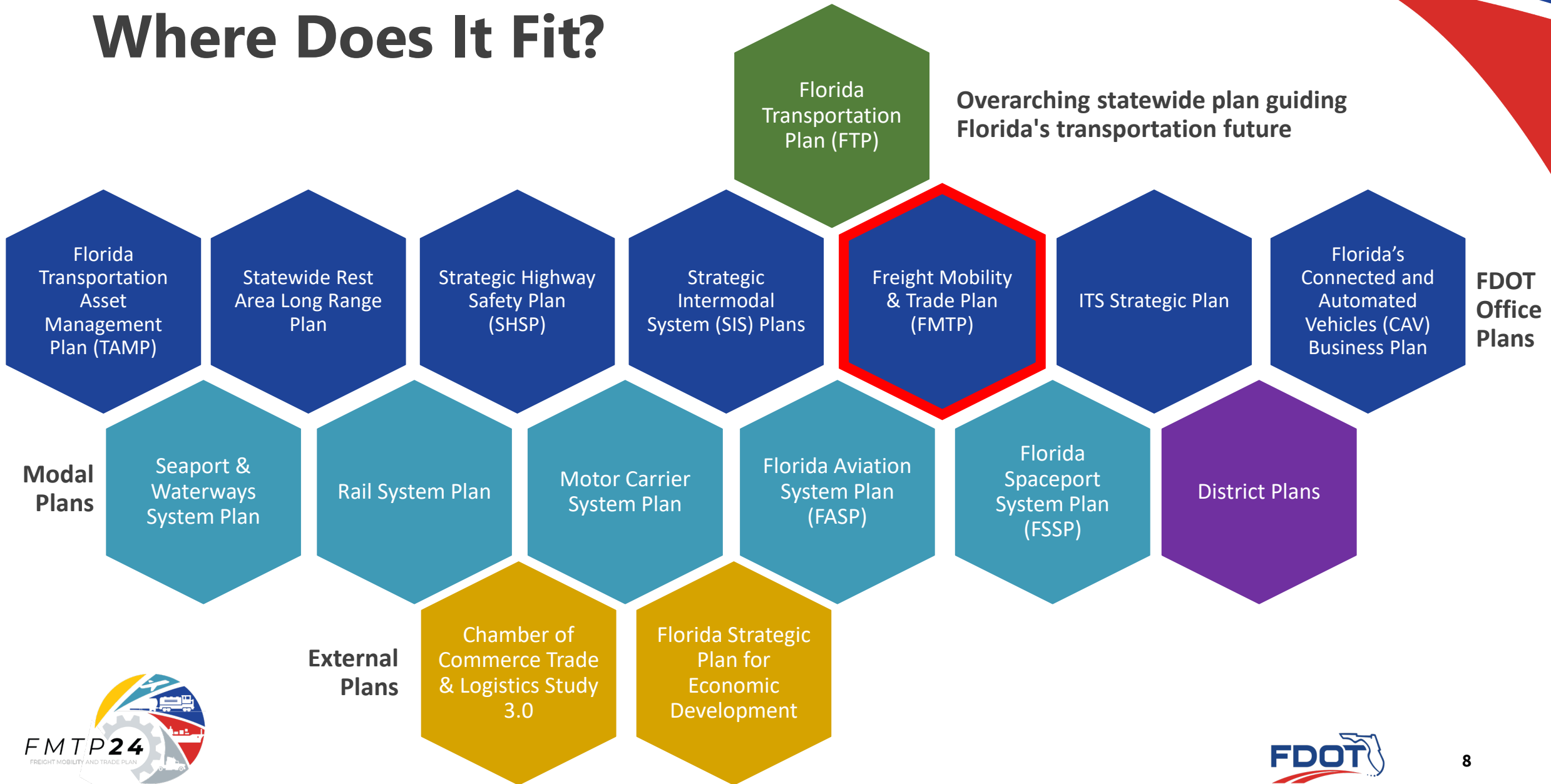
2021

The IIJA was passed, creating the opportunity for substantial investments in freight infrastructure.

2023

FDOT is working on Florida's third Statewide Freight Plan.

Where Does It Fit?



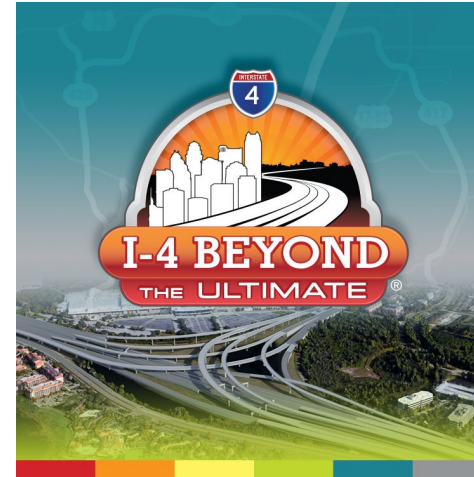
Who Benefits, and How?

General Public	to understand freight's contribution to every day life
Local Government	to measure progress using plan metrics, leverage grants, apply for funding
Elected Officials (Local/Legislature)	to understand freight's role in economy, manufacturing, jobs
Local Chambers of Commerce	to explore freight's share of economy, logistics efficiency, economic strengths, challenges
Manufacturers	to see freight infrastructure availability, logistics efficiency, what places are pro-business
News Outlets and Trade/Business Media	to witness freight's role in daily life and the economy



National Highway Freight Program (NHFP)

- The FMTP helps to determine which projects submitted from around the state will receive funding from the NHFP
- Expected funding amount per FY is ~\$65M
 - Totals finalized in yearly approval process
- This does not increase with the IJA

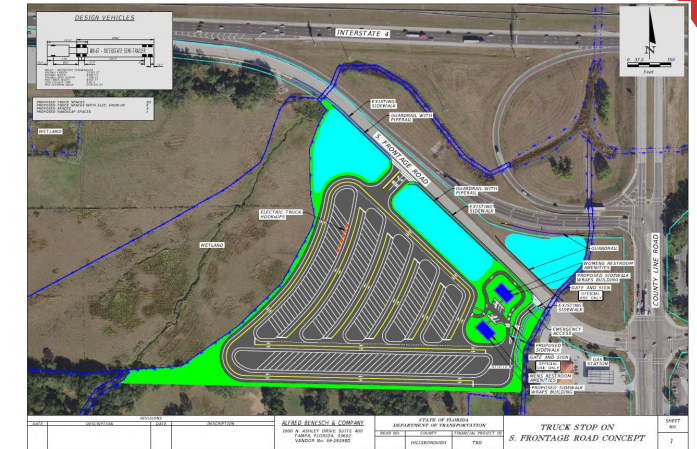


Title:

SR 400 (I-4) 1 Mile of SR 434 to E of SR 15/600 (US17/92) 242592-4 (I-4 Beyond the Ultimate)

NHFP Funds:

\$15,000,000



Title:

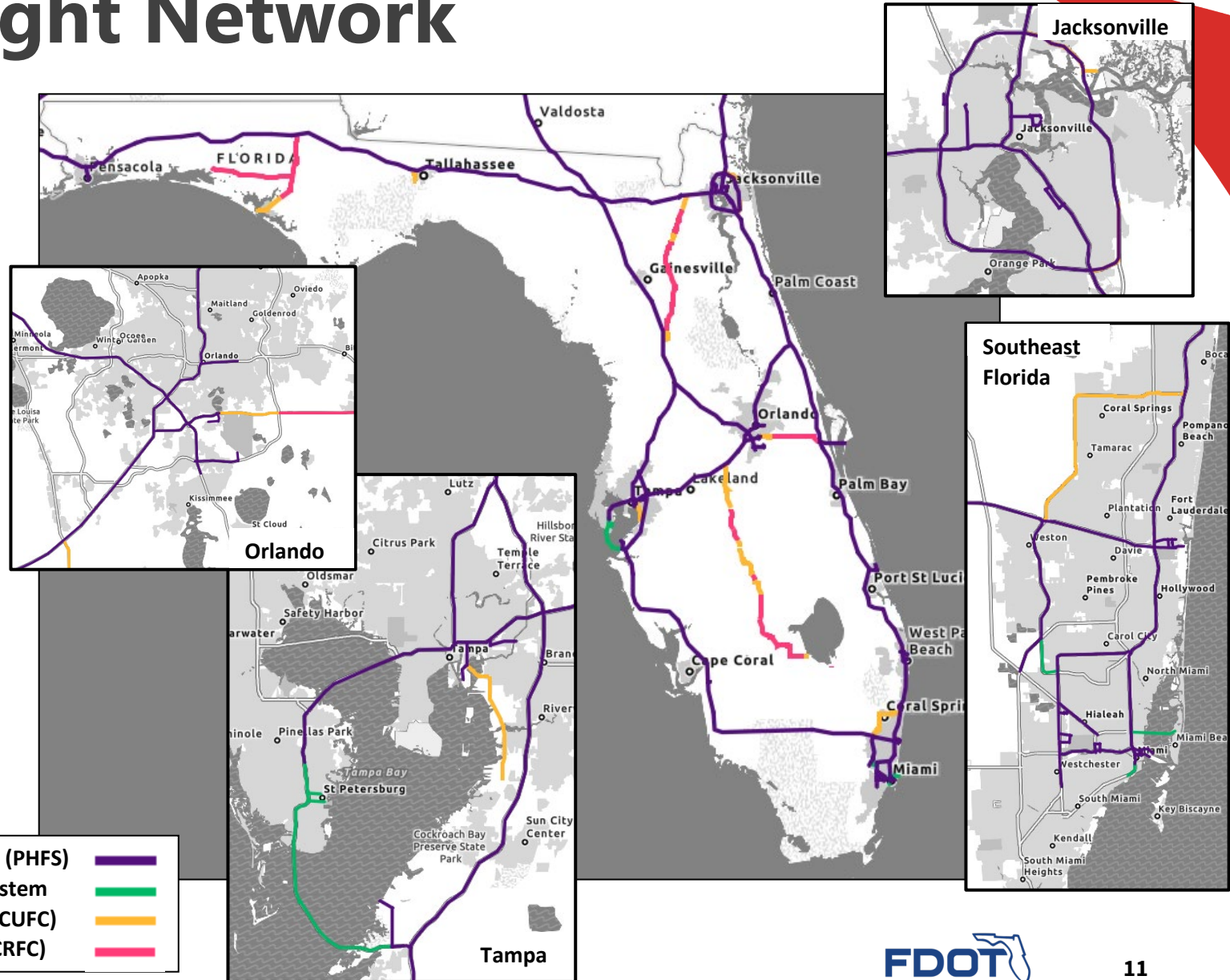
I-4 Truck Parking Facility
448698-1-52-01

NHFP Funds:

\$1,311,404

Relation to the Freight Network

- The National Highway Freight Network (NHFN) helps strategically direct resources toward improved system performance for efficient movement of freight on highways
- Projects submitted for NHFP funding must be on the NHFN or prove that they benefit the NHFN



The 2020 FMTP

8 Technical Memorandums

- TM 1: Policies & Strategies
- TM 2: Systems & Assets
- TM 3: Conditions & Performance
- TM 4: Trends
 - Scenario Planning
- TM 5: Needs & Issues
 - SWOT Analysis
- TM 6: Prioritization & Selection
- **TM 7: Investment & Improvement**
 - Funding
- TM 8: Implementation



10 Chapter Visual Plan

- Chapter 1: Approach
- Chapter 2: Outreach
- Chapter 3: Assets & Conditions
- Chapter 4: Trends
- Chapter 5: Issues & Needs
- Chapter 6: Scenario Planning
- Chapter 7: Prioritization
- Chapter 8: Investment
- Chapter 9: Recommendations
- Chapter 10: Implementation

Updated annually

2020 Objectives



- 1** Leverage multisource data and technology to improve freight system safety and security
- 2** Create a more resilient multimodal freight system
- 3** Ensure the Florida freight system is in a state of good repair
- 4** Drive innovation to reduce congestion, bottlenecks and improve travel time reliability
- 5** Remove institutional, policy and funding bottlenecks to improve operational efficiencies and reduce costs in supply chains
- 6** Improve last mile connectivity for all freight modes
- 7** Continue to forge partnerships between the public and private sectors to improve trade and logistics
- 8** Capitalize on emerging freight trends to promote economic development
- 9** Increase freight-related regional and local transportation planning and land use coordination
- 10** Promote and support the shift to alternatively fueled freight vehicles



Changes Since Last Plan

- Modal Development Office transition
- The COVID-19 pandemic and the challenges with the global supply chain
- New federal requirements & funding through the IJA
- A new group of FLFAC members
- A new Florida Transportation Plan
- New FDOT focus areas



BIL Changes to Freight Planning



Increases investment in multimodal freight infrastructure

- More formula dollars
- New and enhanced competitive programs



Strengthens policy and programming that guide investments

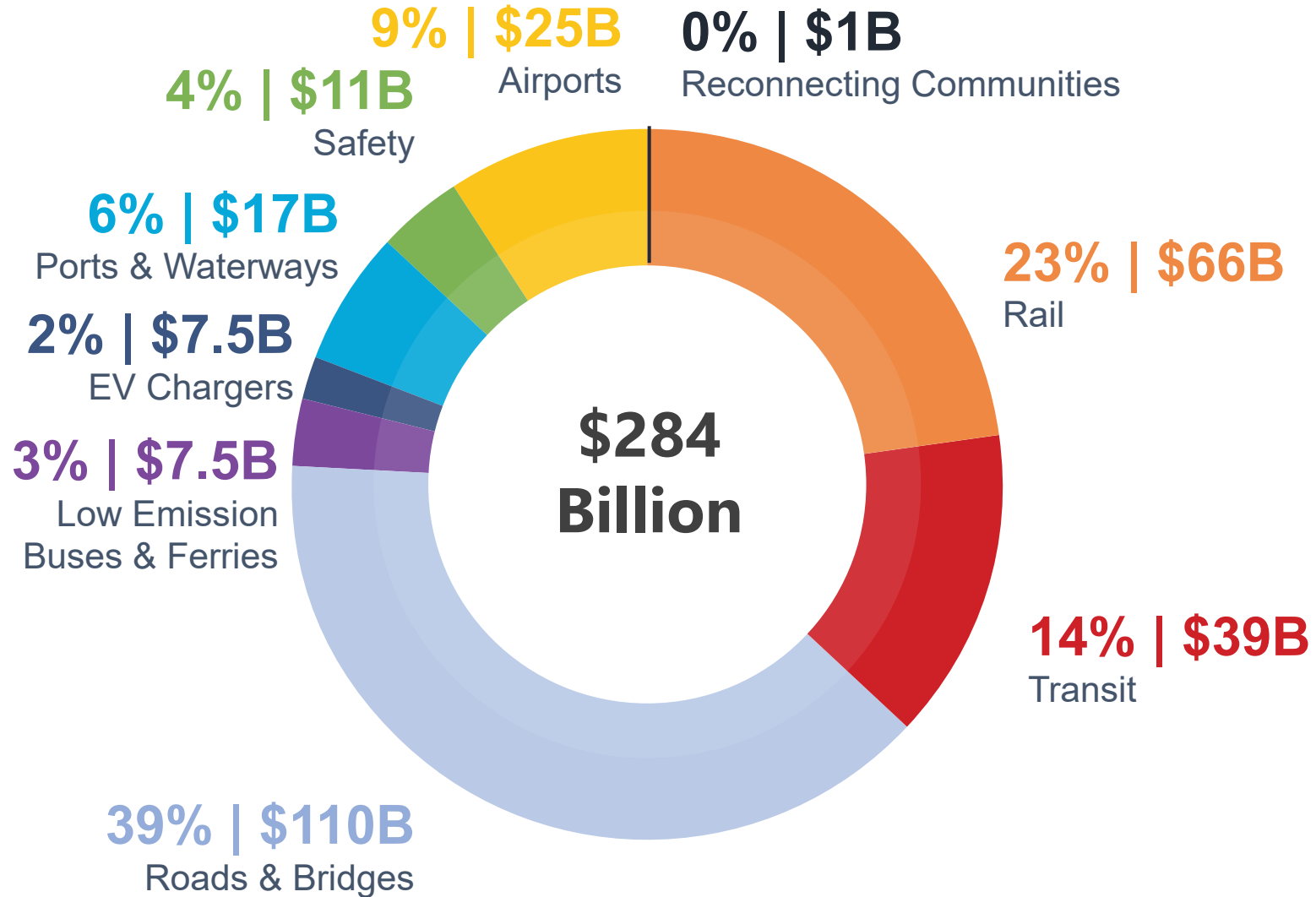
- Expanded eligibility
- Increases critical freight corridors



Establishes Office of Multimodal Freight Infrastructure and Policy within USDOT



New Transportation Investments (Nationally)



Freight Funding Opportunities in IIJA

PROGRAMS	TYPE	FUNDED AMOUNT
National Highway Freight Program	Formula	\$7.2 Billion
National Infrastructure Project Assistance Program ("Mega-projects") (NEW)	Competitive	\$5 Billion
INFRA Program	Competitive	\$8 Billion
RAISE Program	Competitive	\$7.5 Billion
Reduction of Truck Emissions at Port Facilities Program (NEW)	Competitive	\$400 Million

New State Freight Plan Requirements

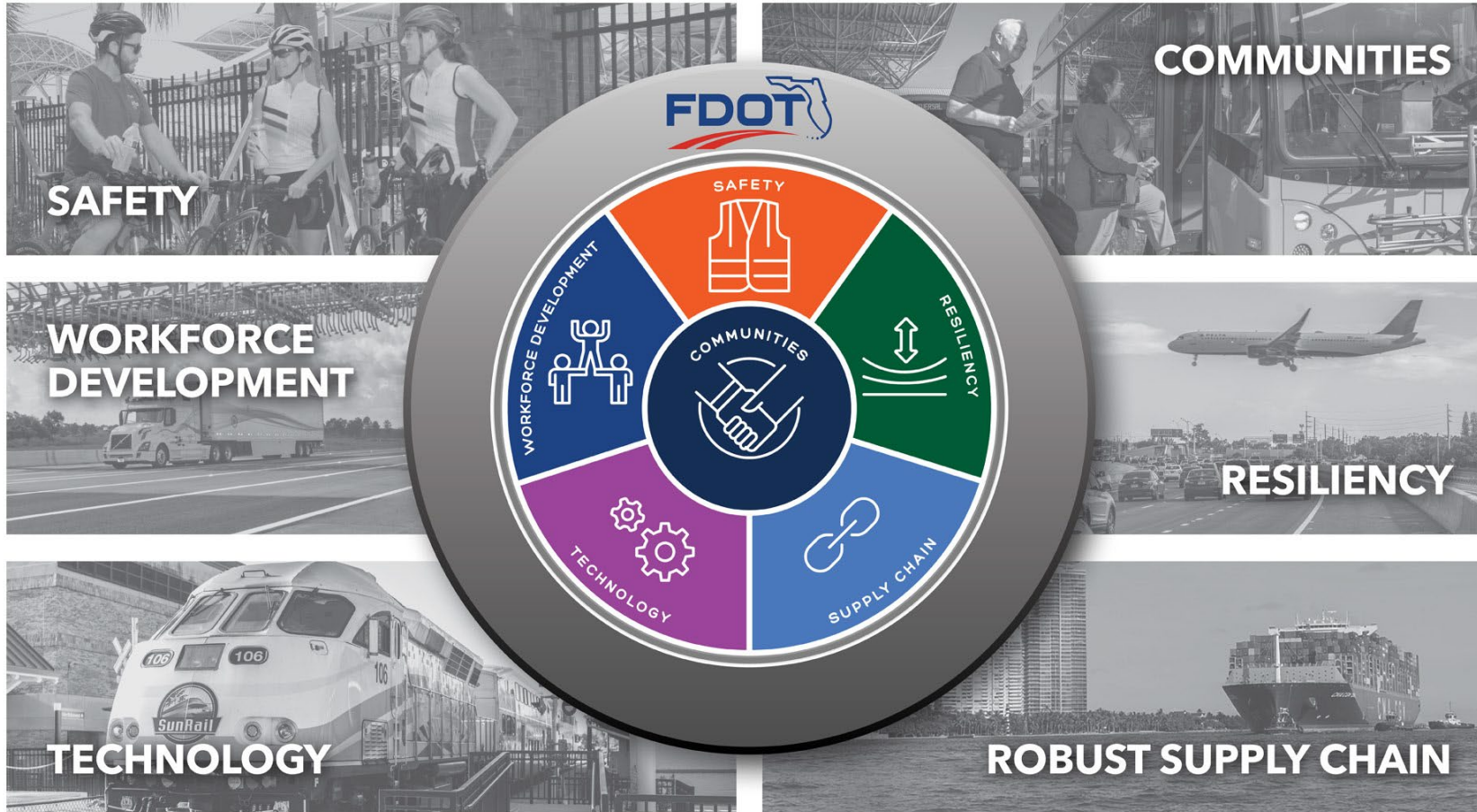
- Must be updated every four years instead of five
- Must include:
 - Supply chain cargo flows
 - Inventory of commercial ports
 - Impacts of e-commerce on freight infrastructure
 - Consideration of military freight
 - Assessment of truck parking facilities in the state
 - Strategies and goals to decrease:
 - The severity of impacts of extreme weather and natural disasters on freight mobility
 - The impacts of freight movement on local air pollution
 - The impacts of freight movement on flooding and stormwater runoff
 - The impacts of freight movement on wildlife habitat loss

FMTP24 Plan Themes

- Innovative**
 - Make data available and interactive
 - Leverage industry best practices & FDOT efforts
- Visual**
 - Incorporate new office branding with a fresh look
 - Build on modular approach to remain concise & digestible
- Strategic**
 - Capture the true freight needs of the state
 - Align projects with funding (both discretionary & grant programs)
- Relevant**
 - Focus areas:
 - Supply chain
 - Resiliency
 - E-commerce
 - Truck parking



FDOT Focus Areas



REGIONAL PERSPECTIVE DISTRICT 4



D4 Freight and Logistics Unit



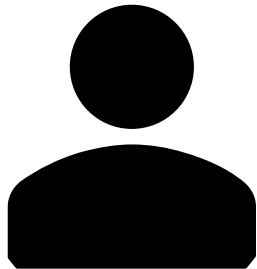
Justin Stroh
District Freight Coordinator



Carlos Castro
F&L Manager



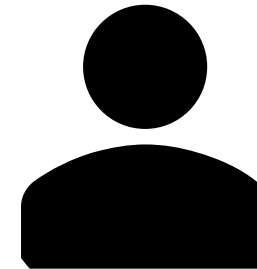
Laurie McDermott
Aviation Coordinator



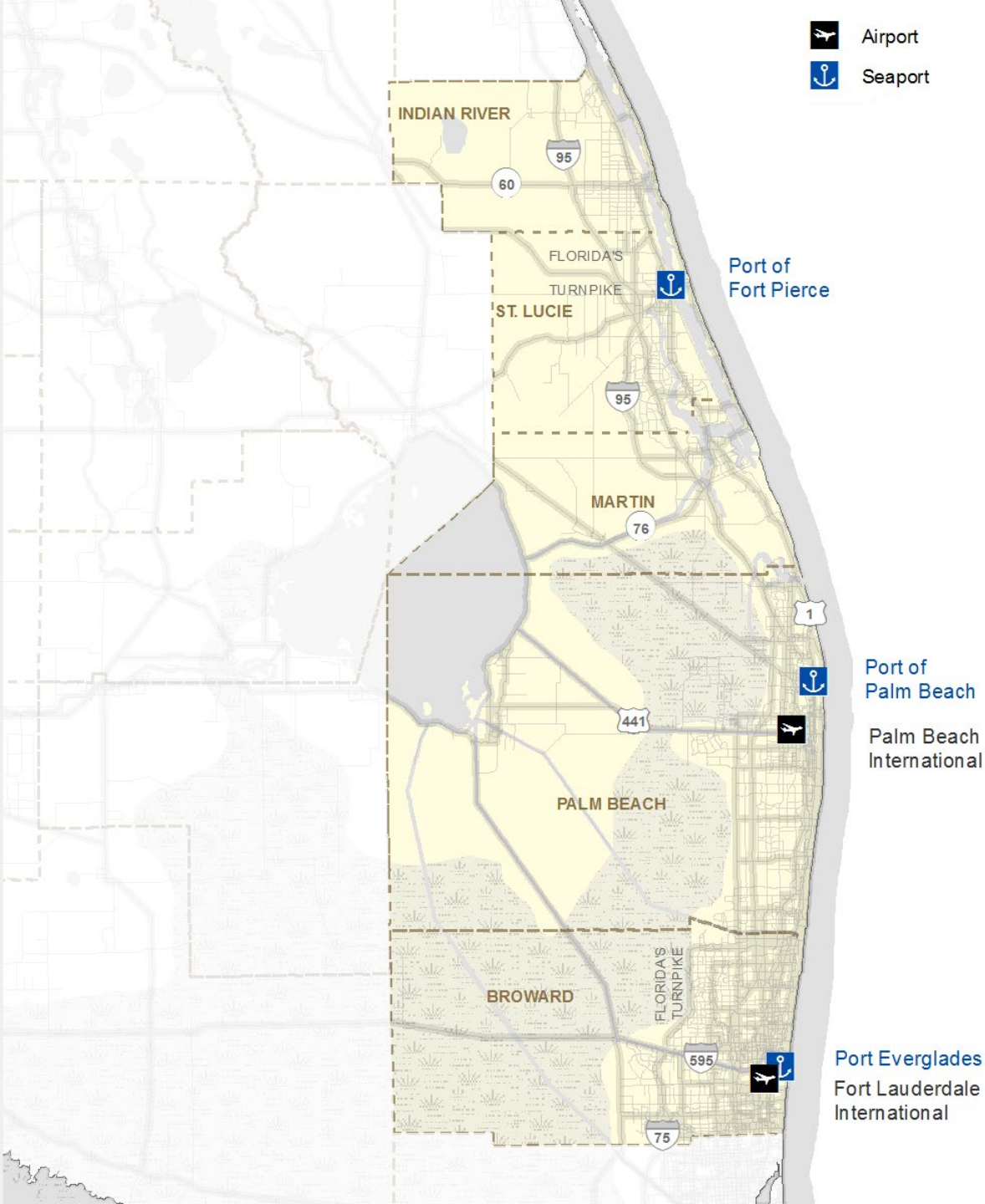
VACANT
*Special Projects
Manager*



Amanda Chornoby, AICP
Interim District Freight Coordinator



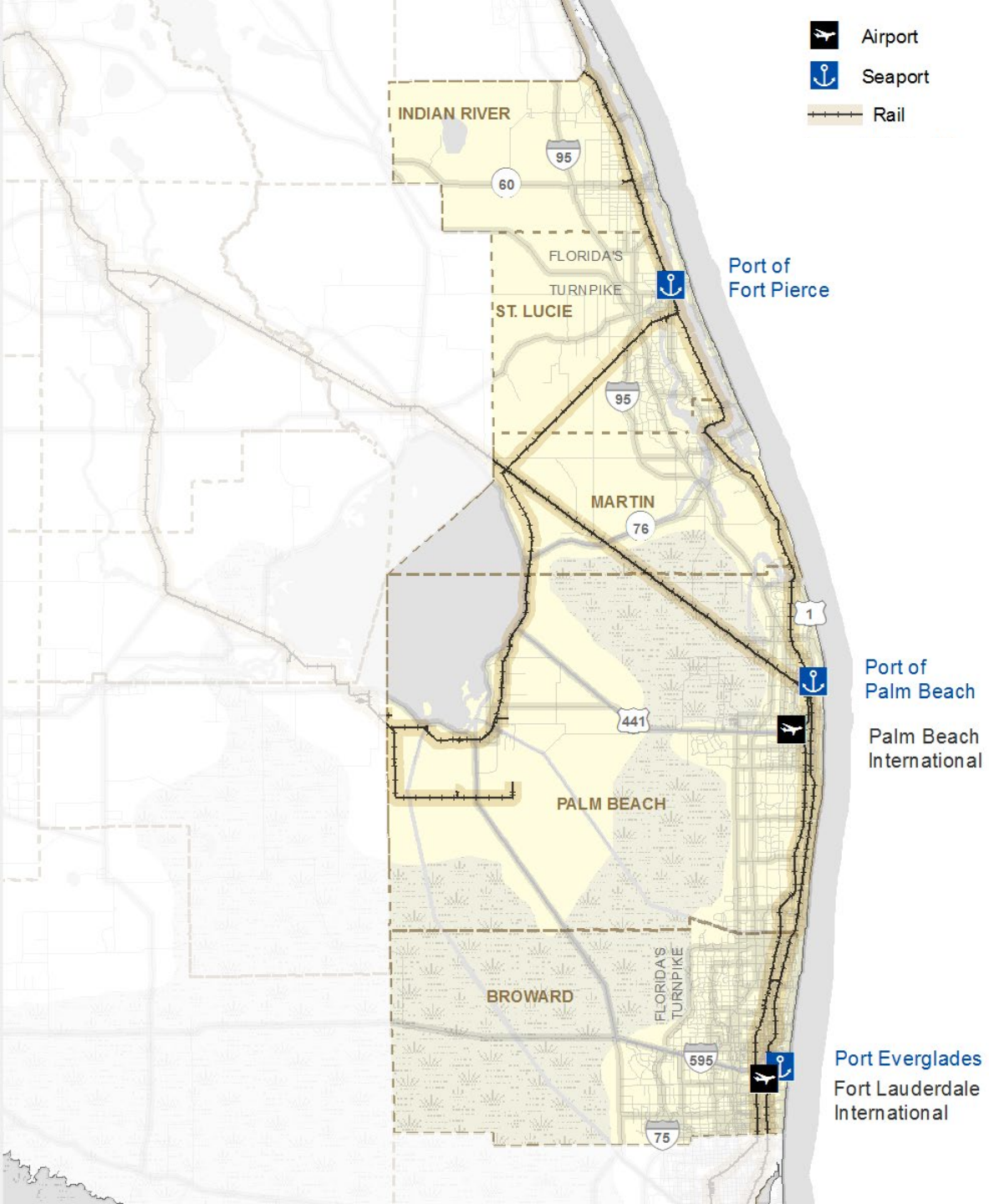
VACANT
Seaport Coordinator



-  Airport
-  Seaport

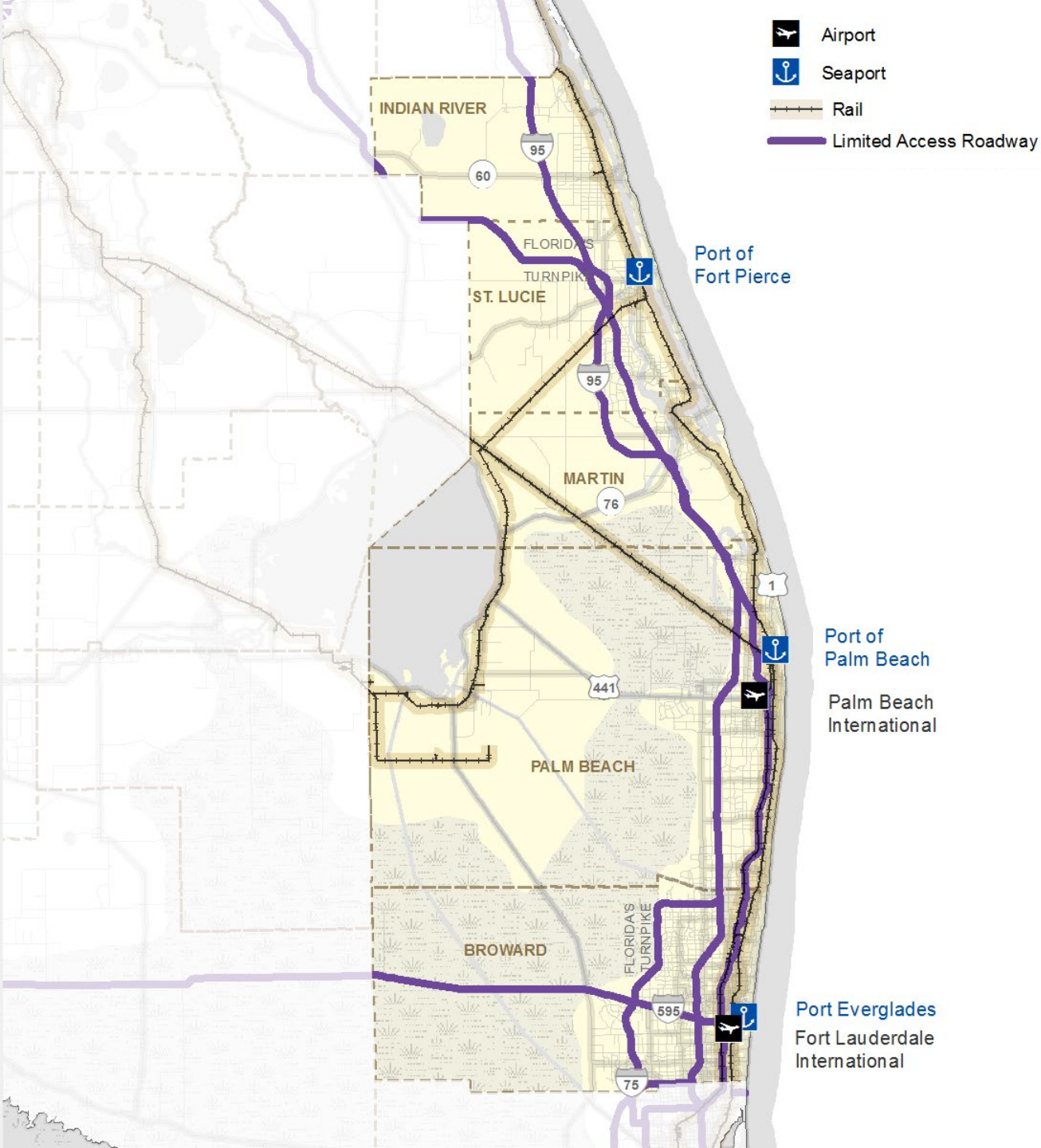
District 4 Freight Network

- Seaports and cargo airports



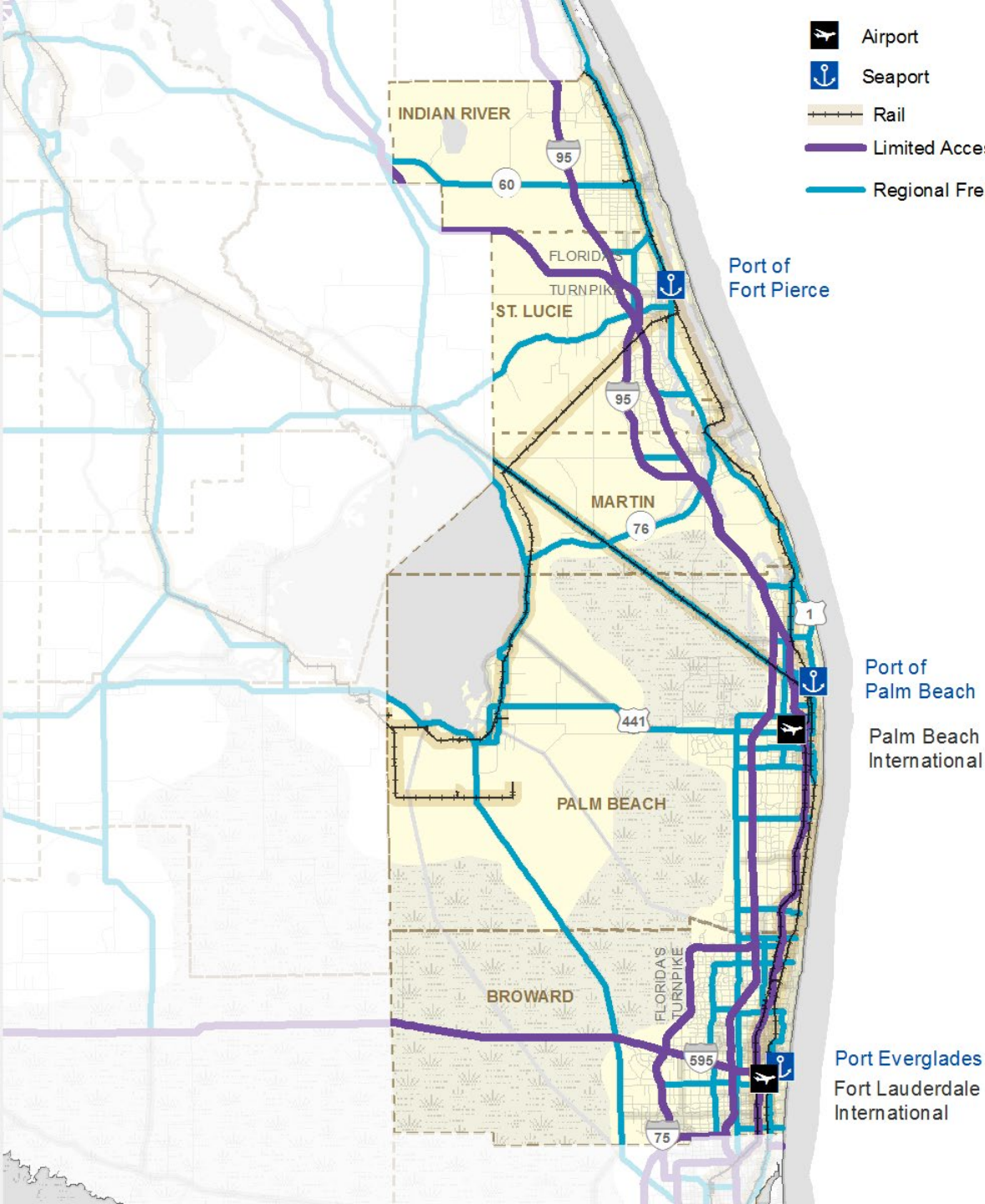
District 4 Freight Network

- Seaports and cargo airports
- Rail lines



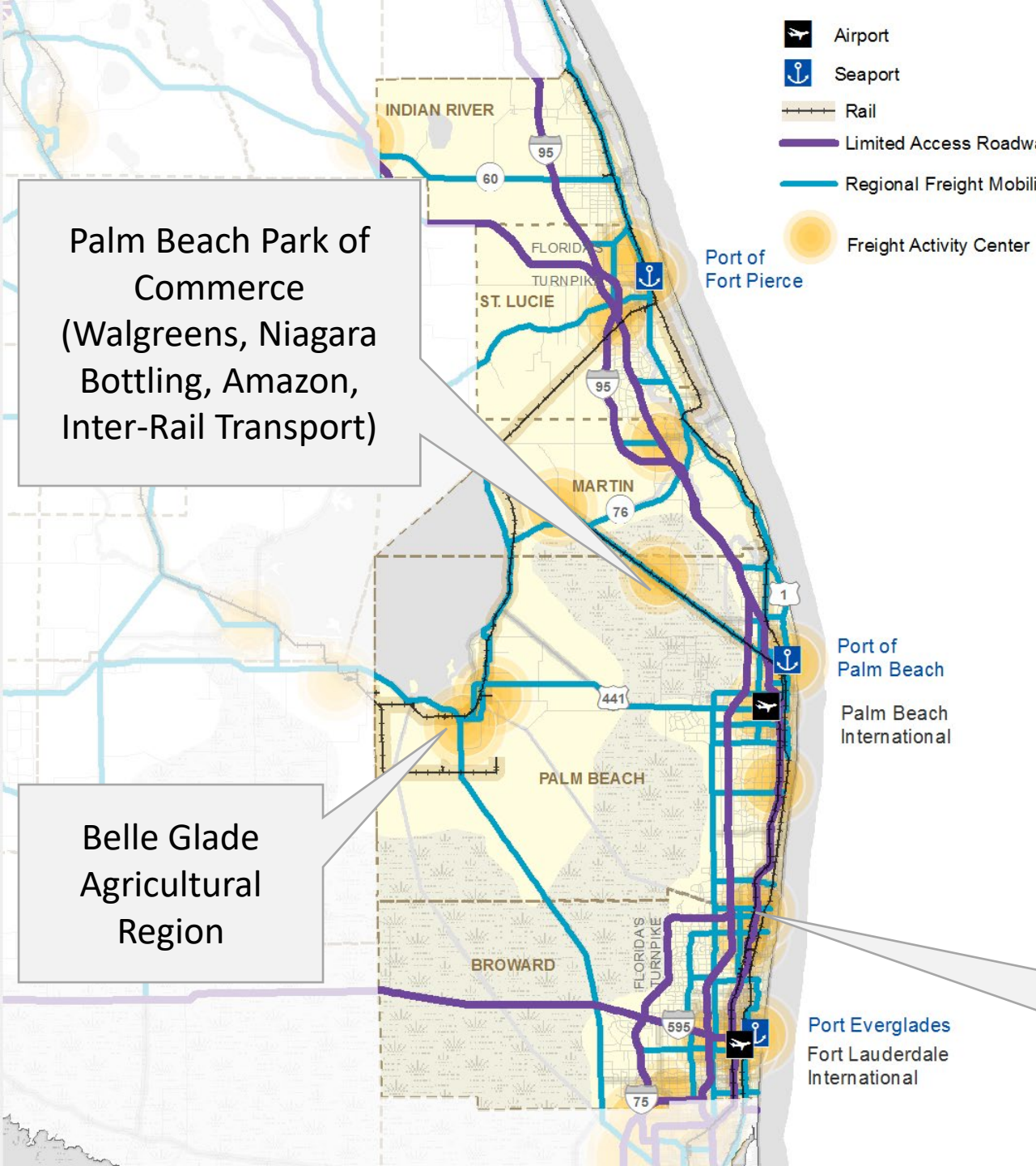
District 4 Freight Network

- Seaports and cargo airports
- Rail lines
- Limited access roadways



District 4 Freight Network

- Seaports and cargo airports
- Rail lines
- Limited access roadways
- Regional freight mobility corridors



Palm Beach Park of Commerce (Walgreens, Niagara Bottling, Amazon, Inter-Rail Transport)

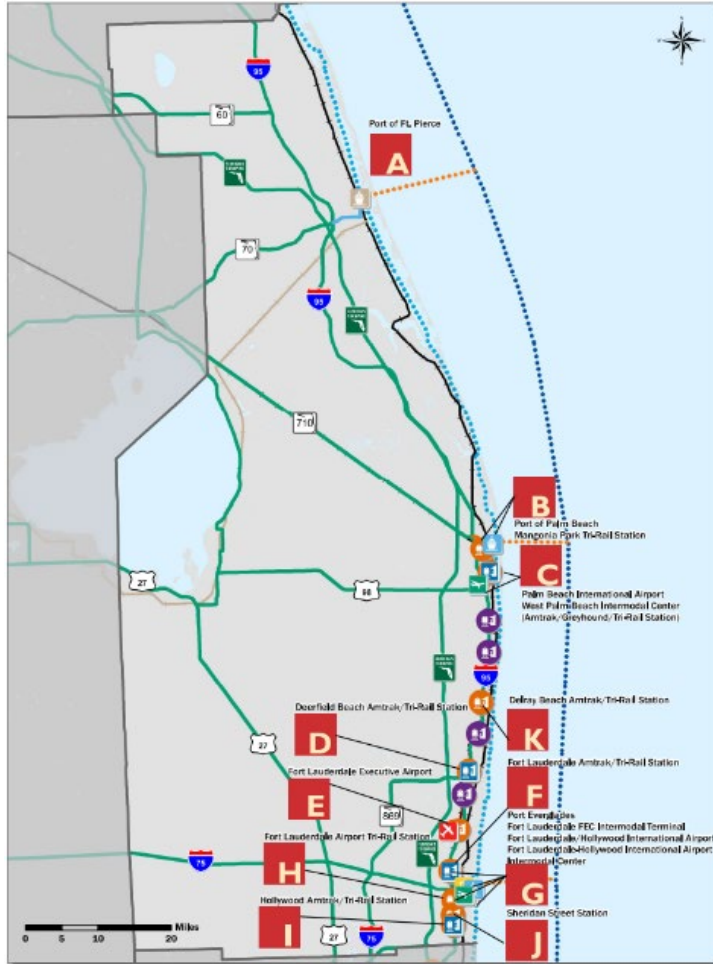
Belle Glade Agricultural Region

District 4 Freight Network

- Seaports and cargo airports
- Rail lines
- Limited access roadways
- Regional freight mobility corridors
- Industrial and distribution clusters

Pompano Distribution Hub (Home Depot, Restoration Hardware, Whole Foods, Publix, Ayco Farms, Pompano Beach Farms Market and many others)

D4 SIS Facilities



DESIGNATED SIS AND STRATEGIC GROWTH FACILITIES						
Facility Type	Active and Planned Drop Facilities				Military Access Facility	Future Facility
	Corridor / Hub		Connector			
	SIS	Strategic Growth	SIS	Strategic Growth		
Airports	2	-	-	-	-	-
General Aviation Reliever	1	-	-	-	-	-
Seaports	2	1	-	-	-	-
Freight Terminals	1	-	-	-	-	-
Passenger Terminals	4	-	-	-	-	-
UFG Hubs / Stations	9 / 4	-	-	-	-	-
Rail Miles	241	77	1	-	-	-
Urban Fixed Guideway	56	-	-	-	-	-
Highway Miles (Centerline)	600	-	25	6	-	-
Highway Miles (Lane)	3219	-	98	34	-	-

D4 SIS Connectors Update [In-Progress]

- Update the existing conditions inventory for the 19 SIS Connectors in District 4
 - Traffic data collection
 - Evaluation of existing conditions
 - Model forecasting
 - Traffic projections and analyses
 - Safety analysis update

	County	SIS Hub Served	SIS Connector Description
1	Broward	Deerfield Beach Amtrak/Tri-Rail Station	I-95 to SR-810/Hillsboro Boulevard west to Goolsby Boulevard south to SW 2 nd Street east to entrance
2	Broward	Cypress Creek Tri-Rail Station	I-95 (NB entrance ramp) to west on Cypress Creek Rd/NW 62 nd Street to NW 6 th Way to south on NW 6 th Way to NW 59 th Court, to east on NW 59 th Court to the entrance
3	Broward	Fort Lauderdale Airport Tri-Rail Station	I-95 to Griffin Road west to Ravenswood Road south to Gulfstream Way east to entrance
4	Broward	Fort Lauderdale Amtrak/Tri-Rail Station	I-95 to Fort Lauderdale Amtrak/Tri-Rail Station Interchange west to entrance
5	Broward	Fort Lauderdale Executive Airport	I-95 to SR-870/Commercial Boulevard west to NW 21 st Avenue north to entrance
6	Broward	Fort Lauderdale FEC Intermodal Terminal	I-95 to SR-84/SW 24 th Street east to Andrews Avenue south to entrance
7	Broward	Fort Lauderdale/Hollywood International Airport (Freight)	I-95 to SR-84/SW 24 th Street east to SW 4 th Avenue south to Perimeter Road cargo entrance
8	Broward	Fort Lauderdale/Hollywood International Airport (Passenger)	I-595 to Fort Lauderdale/Hollywood International Airport interchange south to entrance
9	Broward	Hollywood Amtrak/Tri-Rail Station	I-95 to Hollywood Boulevard west to entrance
10	Broward	Port Everglades (Freight)	I-95 to SR-84/SW 24 th Street to entrance
11	Broward	Port Everglades (Passenger)	I-595 east to Eller Drive east to entrance
12	Broward	Sheridan Street Tri-Rail Station	I-95 to west on Sheridan Street/SR-822 to North 29 th Avenue to south on North 29 th Avenue to the entrance
13	Palm Beach	Delray Beach Amtrak/Tri-Rail Station	I-95 (east leg of interchange) to west on Atlantic Avenue/SR-806 to south on Congress Avenue to east at signalized intersection of the South County Government Complex to the entrance
14	Palm Beach	Mangonia Park Tri-Rail Station	I-95 to 45 th Street east to entrance
15	Palm Beach	Palm Beach International Airport	I-95 to Airport Connect interchange west to entrance
16	Palm Beach	Port of Palm Beach (Cruise)	I-95 to 45 th Street east to US-1 north to 11 th Street entrance
17	Palm Beach	Port of Palm Beach (Freight)	I-95 to SR-708/Blue Heron Boulevard to Congress Avenue south to SR-710/MLK Jr Boulevard east to entrance
18	Palm Beach	West Palm Beach Tri-Rail/Amtrak/Greyhound	I-95 to SR-704/Okeechobee Boulevard east to Tamarind Avenue north to entrance
19	St. Lucie	Port of Fort Pierce	I-95 to SR-70/Okeechobee Road/Virginia Avenue east to US-1/Federal Highway north to Avenue H east to entrance

Ports/Rail Update

Port of Palm Beach – Rail-to-Ship Technical Services Support

- Identify opportunities of providing a SIS connection between the FEC railroad and Port for roll-on/roll-off containers
 - Alignments
 - Staging areas
 - Potential channel upgrades
 - Slip updates
 - Operations



Ports/Rail Update

Port Everglades – Eller Drive & McIntosh Road Feasibility Study

- Objective: Identify up to five alternatives and validate a preferred alternative to improve traffic, mobility, and safety conditions at this intersection
 - Relieve truck container movement in/out of the Port



Ports/Rail Update

Seaport Compliance Annual Review

- Ports
 - Port Everglades
 - Port of Palm Beach
 - Port of Fort Pierce
- Technical reports that identify compliant / non-compliant projects
 - SeaCIP
 - Port Interview

FLORIDA DEPARTMENT OF TRANSPORTATION
OFFICE OF MODAL DEVELOPMENT
DISTRICT 4

Seaport Compliance Review 2023



License Plate Reader System

Port Everglades

Contract Number: G1J79

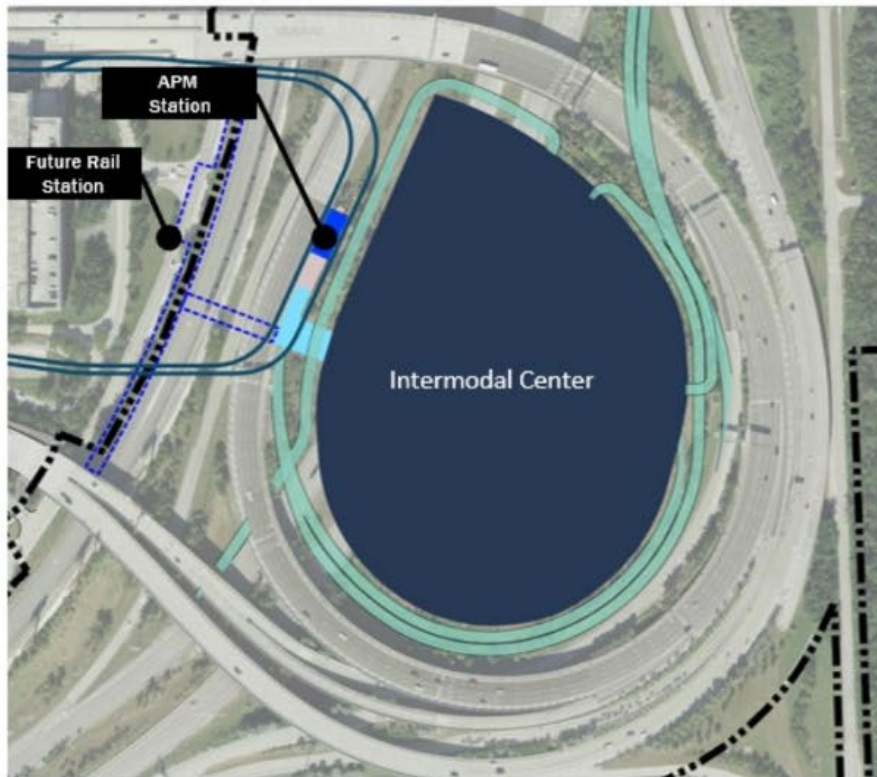
Financial Number: 444884-1-94-02

April 24th, 2023

Prepared By: Renaissance Planning

Airport Update

Fort Lauderdale-Hollywood International Airport (FLL) Intermodal Center (IMC)



Project Overview:

- 4.6 million square foot 8-level facility
- Approximately 6,685 vehicle parking spaces
- Uses and functions include but not necessarily limited to:
 - Multi-modal opportunities (Brightline, BCR, Airport/Seaport/Convention Center Connector)
 - Parking for Airport, Seaport, and Transit passengers
 - Ground transportation center for commercial vehicle traffic
 - Commercial center for enhanced revenue opportunities
 - Potential advanced air mobility operation on top floor/roof

Purpose & Need:

- Reduces congestion by capturing vehicles prior to entering the Airport's roadway system
- Long range planning utilizes the IMC for connectivity between the Airport, Seaport and the Convention Center
- Provides additional parking capacity for FLL
- Enables infrastructure for the APM system and airport connectivity

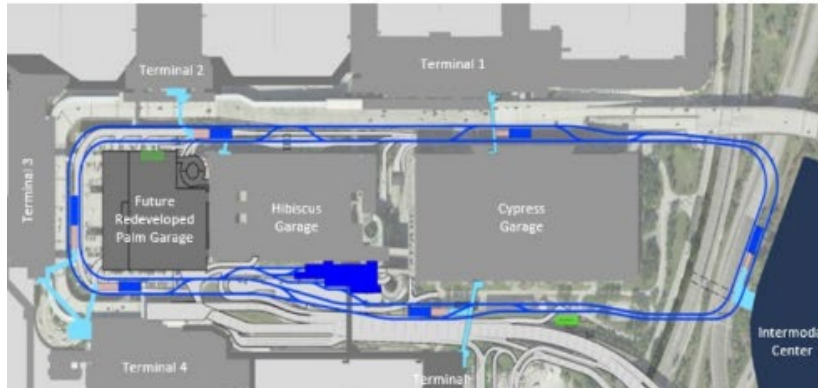
Airport Update

Fort Lauderdale-Hollywood International Airport (FLL) Intermodal Center (IMC)



Airport Update

Fort Lauderdale-Hollywood International Airport (FLL) Automated People Mover (APM)



Project Overview:

- Six APM stations serving FLL's terminals, parking garages, and the future IMC
- Approximately 16,000 linear feet of dual guideway
- One Maintenance and Storage Facility

Purpose & Need:

- Relieves existing and anticipated congestion by removing vehicles from the terminal roadway network
- Enhances connectivity:
 - Between passenger terminals and landside facilities with higher frequency
 - By providing convenient interconnectivity to BRT/LRT/Commuter Rail and other transit options
- Vital to FLL's landside system capacity expansion plan (roadway modifications) and provides convenient connectivity via the IMC to future developments at FLL

Airport Update

Fort Lauderdale-Hollywood International Airport (FLL) Automated People Mover (APM)



Airport Update

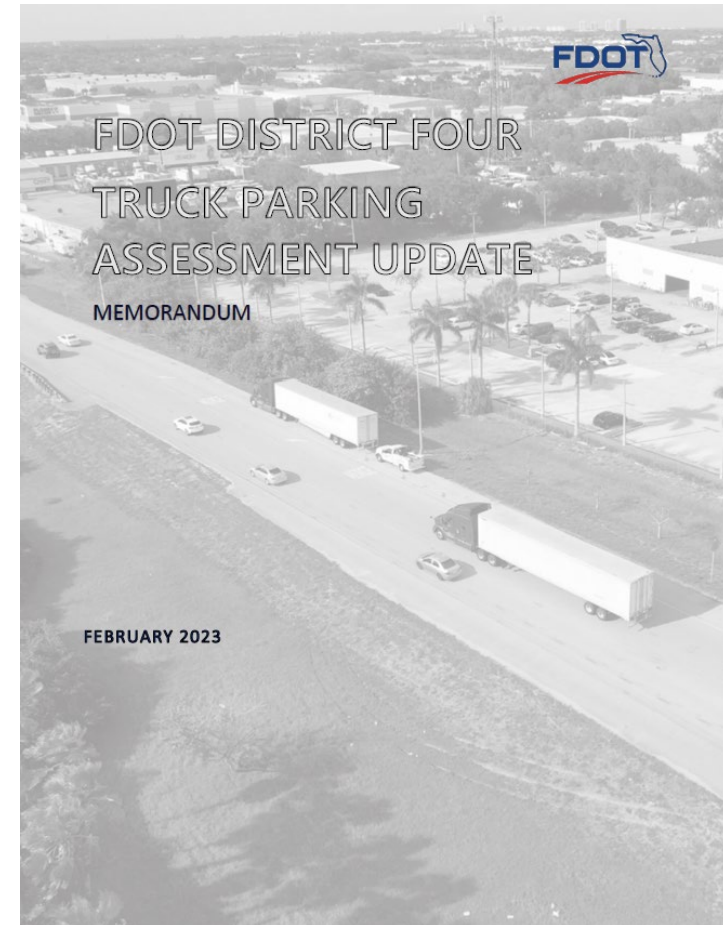
- District 4 Aviation Safety Presentation
 - Internal FDOT Training



Freight Update

Truck Parking

- **D4 Truck Parking Assessment Update (2023)**
 - Evaluated opportunities for truck parking at D4 tandem lots, rest areas, WIM stations, and PnRs (40)
 - Concepts/LREs developed (8)
 1. Sheridan Street Tri-Rail Station
 2. Cypress Creek Tri-Rail Station
 3. Congress Avenue Park-and-Ride
 4. I-95 Northbound Rest Area (Mile Marker 106)
 5. I-95 Southbound Rest Area (Mile Marker 107)
 6. Martin Highway and Turnpike (Mile Marker 133) Park-and-Ride
 7. I-95 Northbound St. Lucie County Rest Area (Mile Marker 133)
 8. I-95 Southbound St. Lucie County Rest Area (Mile Marker 133)



Freight Update

Truck Parking

- **I-75 Rest Areas in St. Lucie Feasibility Study**

- Aim is to bring sites up to FDOT Facilities Design Manual guidelines
- Existing*
 - ~90 car spaces
 - ~42 truck spaces
- Future (Optimized/Max.)*
 - ~171 car spaces
 - ~101 truck/RV spaces

*Per Site

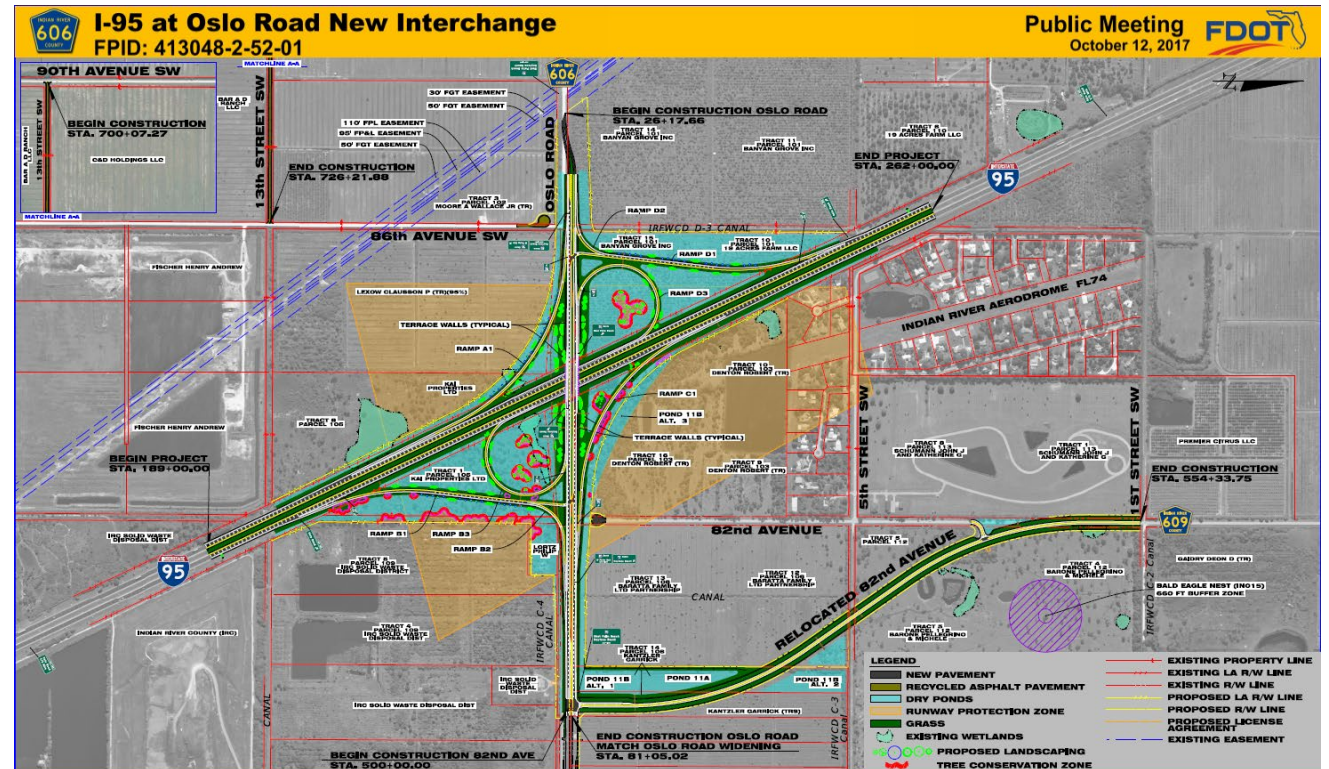


Freight Update

Truck Parking

- **I-95 at Oslo Road New Interchange**

- ROW Acquisition for construction storage/staging and drainage
- SE Quadrant Parcel No. 104 (~70-Acres)
- Truck Parking Assessment (Scheduled to begin in August 2023)



Freight Update

Freight Improvement Database

- Purpose:
 - Inventory, organize and prioritize “freight hot spot” locations, in a searchable database, as identified by truck drivers
 - Database used to implement stand-alone projects and/or integrate with other maintenance, planning, and design initiatives to support freight



***QR to submit freight hot spots
in FID online survey***

Freight Update

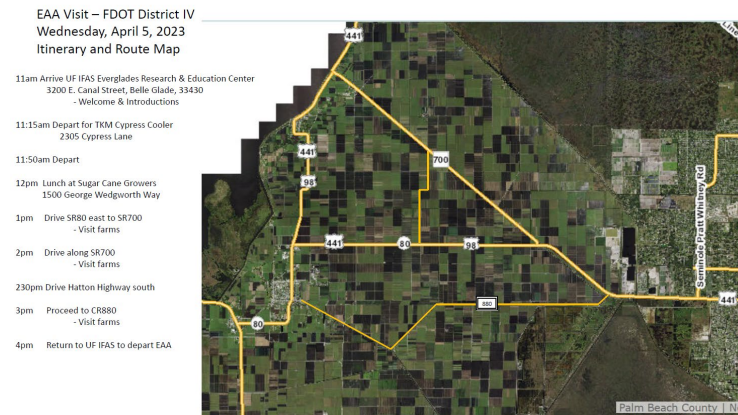
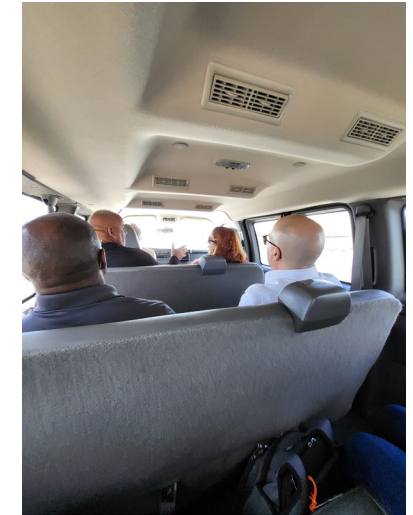
Freight Engagement Highlights

- **Freight Workshops**

- [Introduction to Freight](#)
- Truck Parking
- eCommerce and Curbside Management

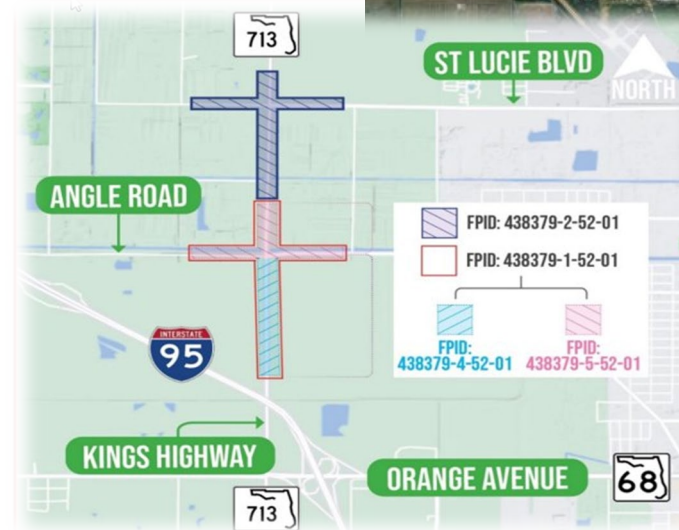
- **Belle Glade Site Visit**

- TKM Cypress Cooler
- Sugar Cane Growers
- Farms/Driving Ag Routes



Communities / Supply Chain

- **King's Highway Business Relocation**
 - Construction to replace existing two-lane, undivided roadway w/ four-lane, divided roadway
 - ROW needed but kept existing A/C tenant on site to minimize supply chain impacts



Looking Ahead

- **Prioritize Engagement to Focus on Community Vision and Needs**
 - Forge new partnerships (Reconnect with existing stakeholders)
- **Leverage All Funding Sources to Maximize Resources**
 - Evaluate regional freight mobility needs
 - Identify deficiencies & opportunities
- **Encourage Regional Collaboration for Freight Transportation Solutions**
 - Goals and objectives



BREAKOUT SESSION



Go to
www.menti.com

Code
7552 8500



Breakout Instructions

- Break up into smaller groups
- Small group facilitated discussions on:
 - Biggest regional issues
 - Potential solutions
 - Strategies to address issues/achieve objectives
- Group leader from each breakout group will report on the group discussions

This is your chance to provide input! We want to hear from everyone!

CONCLUDING REMARKS



FMTP Stakeholders/Outreach

	Florida Freight Advisory Committee (FLFAC)	Project Advisory Committee (PAC)	Regional Freight Forums	Public Comment
WHO	A representative cross-section of public and private sector freight stakeholders	Members from relevant FDOT Offices and District Freight Coordinators (DFCs)	Members of the public and freight stakeholders	Members of the public and freight stakeholders
WHAT	Advise on freight-related priorities, issues, projects, and funding needs; Promote the sharing of information between the private/public sectors	Provide project oversight and guidance; Share best practices and lessons learned	Help identify statewide or District-specific freight trends, challenges, needs, and solutions	Ensure the plan appropriately captures public input

Next Steps

May 2023

FMTTP Kickoff

June 2023

Regional Freight
Forums

**October
2023**

PAC 3 Meeting

**February
2024**

Submit to FHWA
for approval

**May
2023**

PAC 1
Meeting

**July
2023**

PAC 2
Meeting &
FLFAC
Meeting

**December
2023**

PAC 4 Meeting
& FLFAC
Meeting



Other Ways to Provide Input

- Post-meeting online survey/comment form
- Reach out to your District Freight Coordinator



Freight Coordinators

District 1 | Bartow

Amanda Tyner

Amanda.Tyner@dot.state.fl.us

District 2 | Lake City

Hunter Livingston

Hunter.Livingston@dot.state.fl.us

District 3 | Chipley

Ray Corbitt

Ray.Corbitt@dot.state.fl.us

District 4 | Ft. Lauderdale

Justin Stroh

Justin.Stroh@dot.state.fl.us

District 5 | DeLand

Sarah Van Gundy

Sarah.VanGundy@dot.state.fl.us

District 6 | Miami

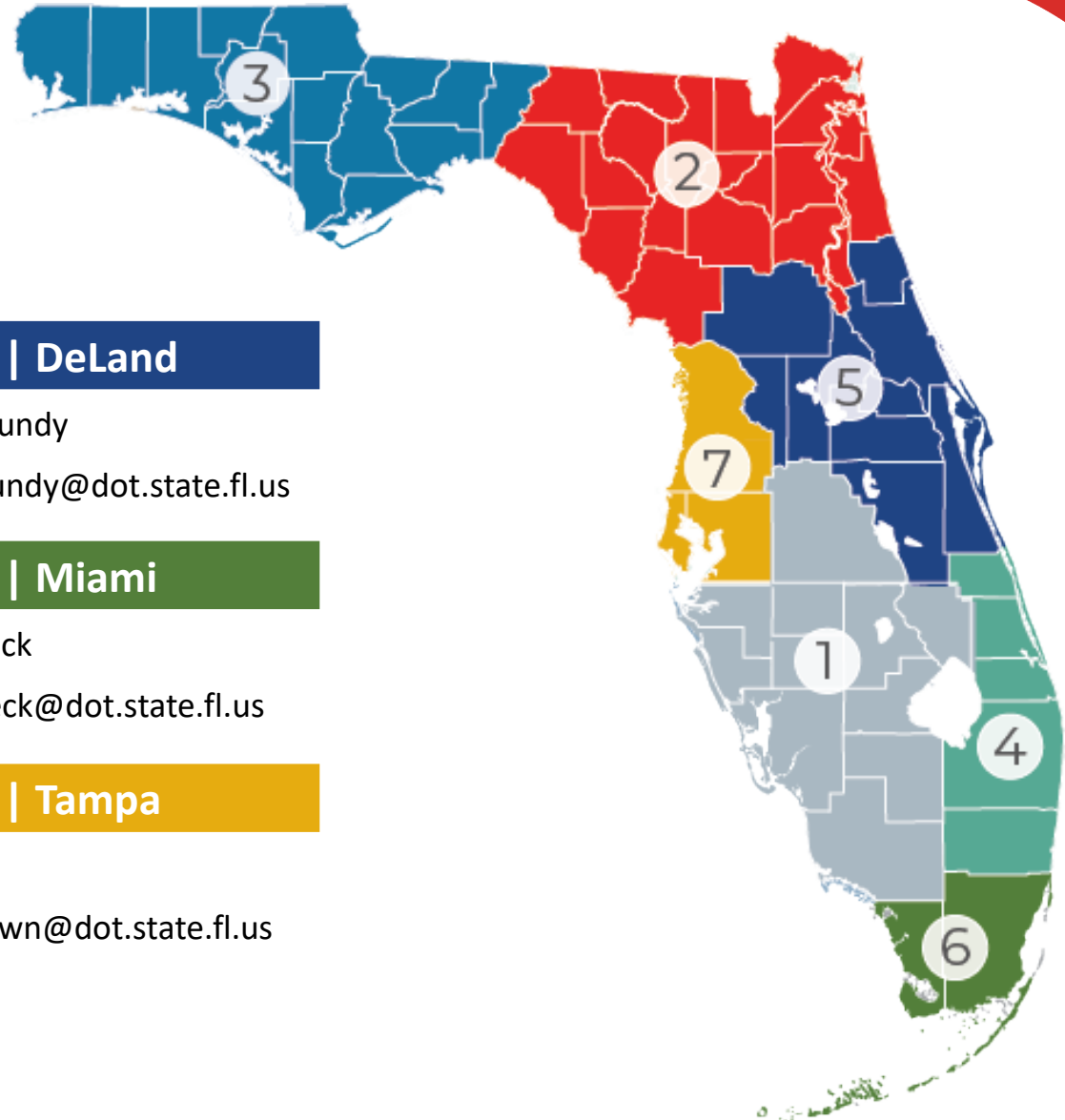
Daniel Lameck

Daniel.Lameck@dot.state.fl.us

District 7 | Tampa

Mike Brown

Michael.Brown@dot.state.fl.us



Regional Outreach Dates

CENTRAL FL– June 12, 2023 | 1PM-4PM

FDOT Deland - Cypress A&B Conference Room

719 South Woodland Blvd., Deland, FL 32720

SOUTHWEST FL– June 13, 2023 | 1PM-4PM

FDOT Southwest Area Office (SWAO) Conference Room

10041 Daniels Parkway, Ft. Myers, FL 33913

NORTHEAST FL– June 15, 2023 | 9AM-12PM

FDOT Jacksonville - Urban Office Training Center

2198 Edison Avenue, Jacksonville, FL 32204

WEST CENTRAL FL– June 19, 2023 | 1PM-4PM

FDOT District 1 HQ Conference Room

801 North Broadway Avenue, Bartow, FL 33830

NORTH FL– June 21, 2023 | 1PM-4PM

FDOT Central Office - Auditorium

605 Suwannee Street, Tallahassee, Florida 32399

SOUTH FL– June 29, 2023 | 1PM-4PM

Miami-Dade Public Library - Aventura Branch

2930 Aventura Blvd., Aventura, FL 33180

SOUTHEAST FL– June 30, 2023 | 1PM-4PM

FDOT Fort Lauderdale - Auditorium

3400 West Commercial Blvd., Ft. Lauderdale, FL 33309

VIRTUAL– July 12, 2023 | 9AM-12PM

GoToWebinar – Register Here:

[FMTP24 GoToWebinar Registration](#)

*FMT***P24**

FREIGHT MOBILITY AND TRADE PLAN

THANK YOU

Holly Cohen

Freight and Rail Planning
Administrator
850.414.4954
Holly.Cohen@dot.state.fl.us

Eugene Jules

Freight and Rail Planner – RXR
Opening/Closure Program
850.414.4528
eugene.jules@dot.state.fl.us

FREIGHT@dot.state.fl.us

