



PD&E Services for SR 9/I-95
from South of Woolbright Road to North of Woolbright Road

FPID No.: 437279-1-22-02 | ETDM No.: 14341

Public Kick-Off Meeting

May 16, 2019



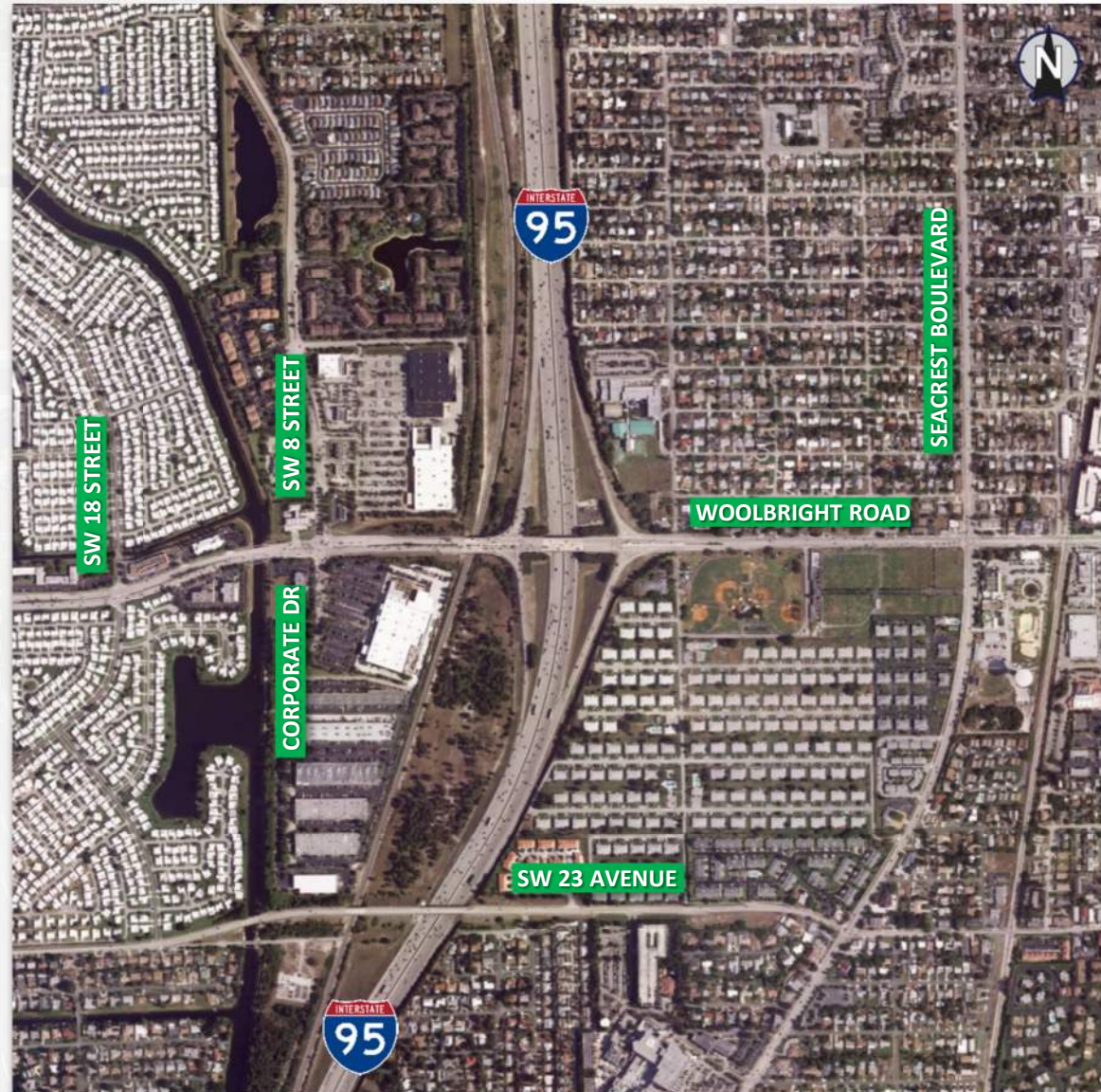
Today's Agenda

- Introduction
- Project Development & Environment (PD&E) Study Process
- Project Description
- Key Project Issues
 - Engineering Issues
 - Environmental Issues
- Summary Schedule
- Closing



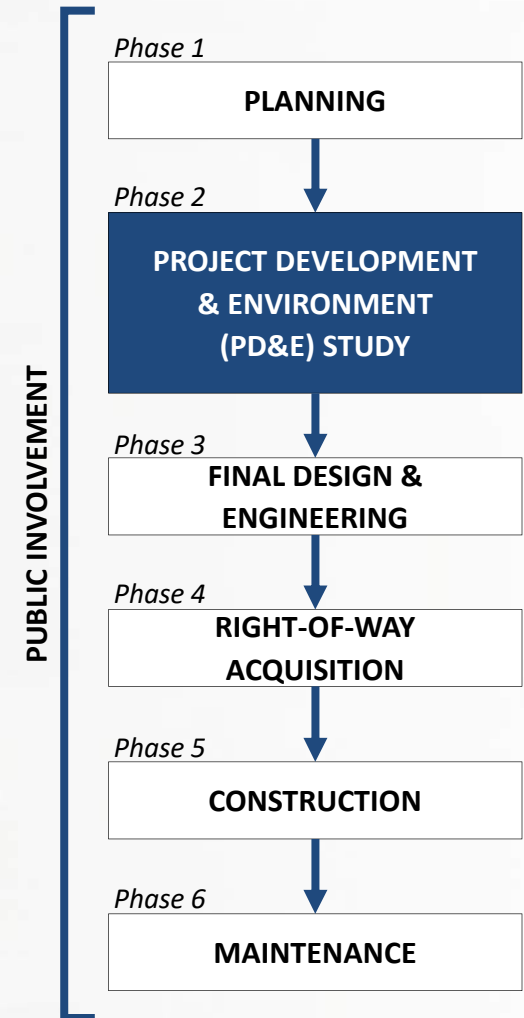
Project Location

- SR 9/I-95 Interchange at Woolbright Road
- Palm Beach County, Florida
 - City of Boynton Beach
- SR 9/I-95
 - 10 Lanes divided Interstate
 - Strategic Intermodal System (SIS)
 - Posted Speed Limit: 65 MPH
 - Adjacent Interchanges:
 - Boynton Beach Boulevard – 1.0 Miles North
 - Atlantic Avenue – 3.8 Miles South
- Woolbright Road
 - Six Lanes divided west of I-95
 - Five Lanes with a two-way left turn lane east of I-95
 - Urban Minor Arterial
 - Posted Speed Limit: 40 MPH
- SFRC/CSX Railway parallel to I-95 (Tri-Rail)

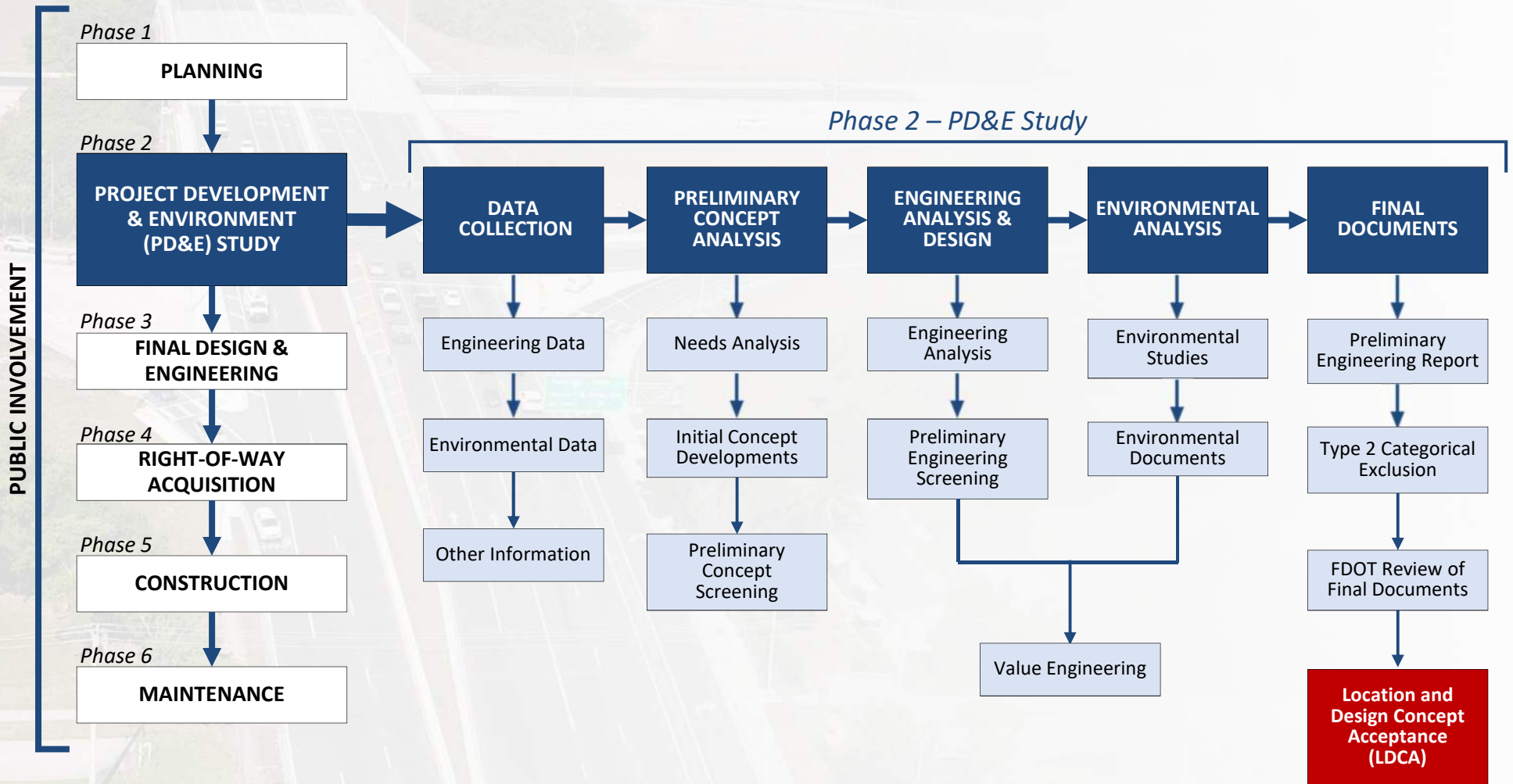


Introduction

- What is a Project Development and Environment (PD&E) Study?
 - A process followed by FDOT to evaluate:
 - Engineering Alternatives
 - Environmental Impacts
 - Social, Cultural and Economic impacts associated with a planned transportation project
 - Mandated by the National Environmental Policy Act (NEPA)
 - Required when Federal Funds are Involved

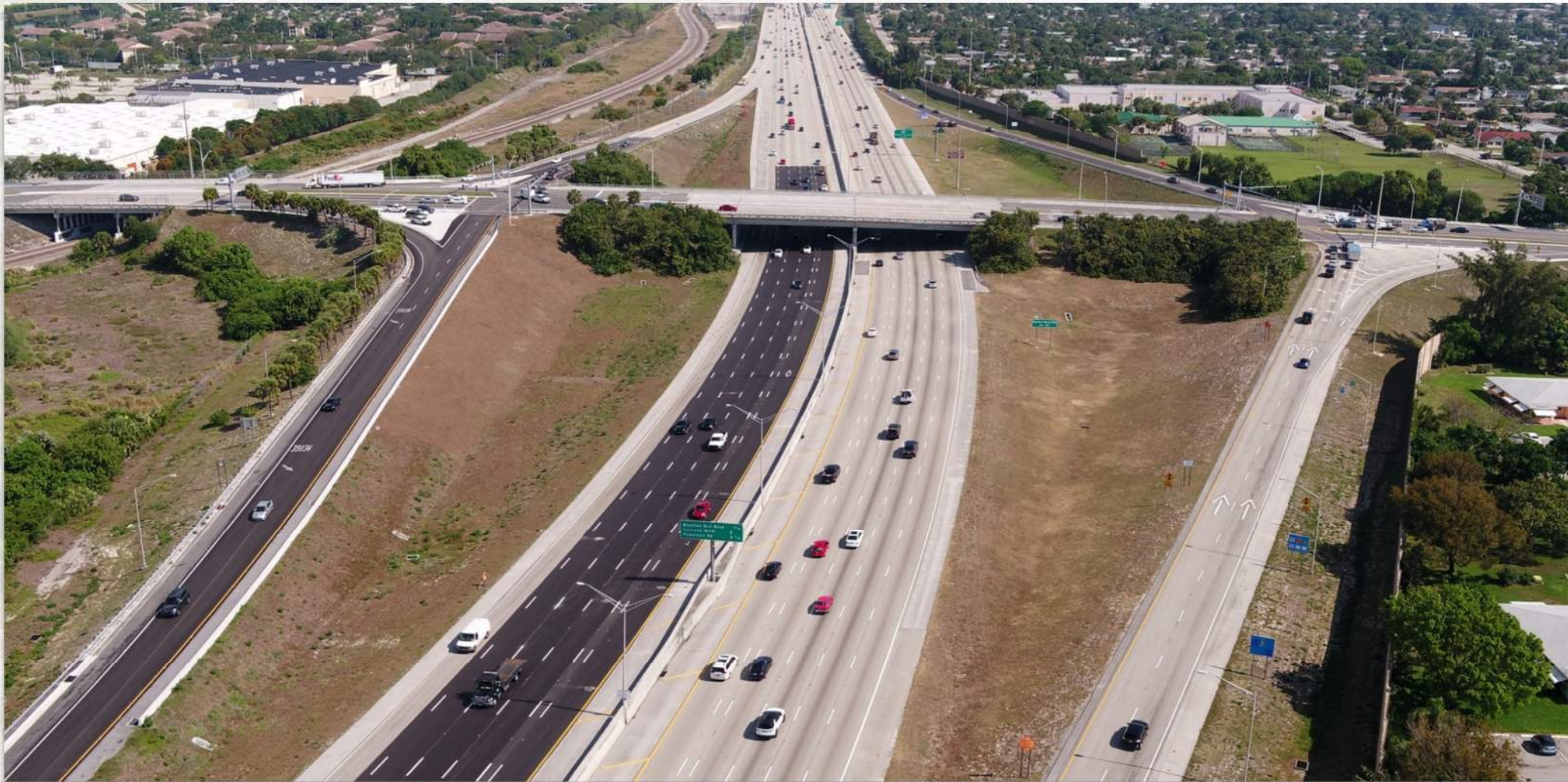


PD&E Study Process



Project Limits

- SR 9/I-95 – from South of Woolbright Road to North of Woolbright Road
- Woolbright Road– From the E-4 Canal to just East of the I-95 interchange

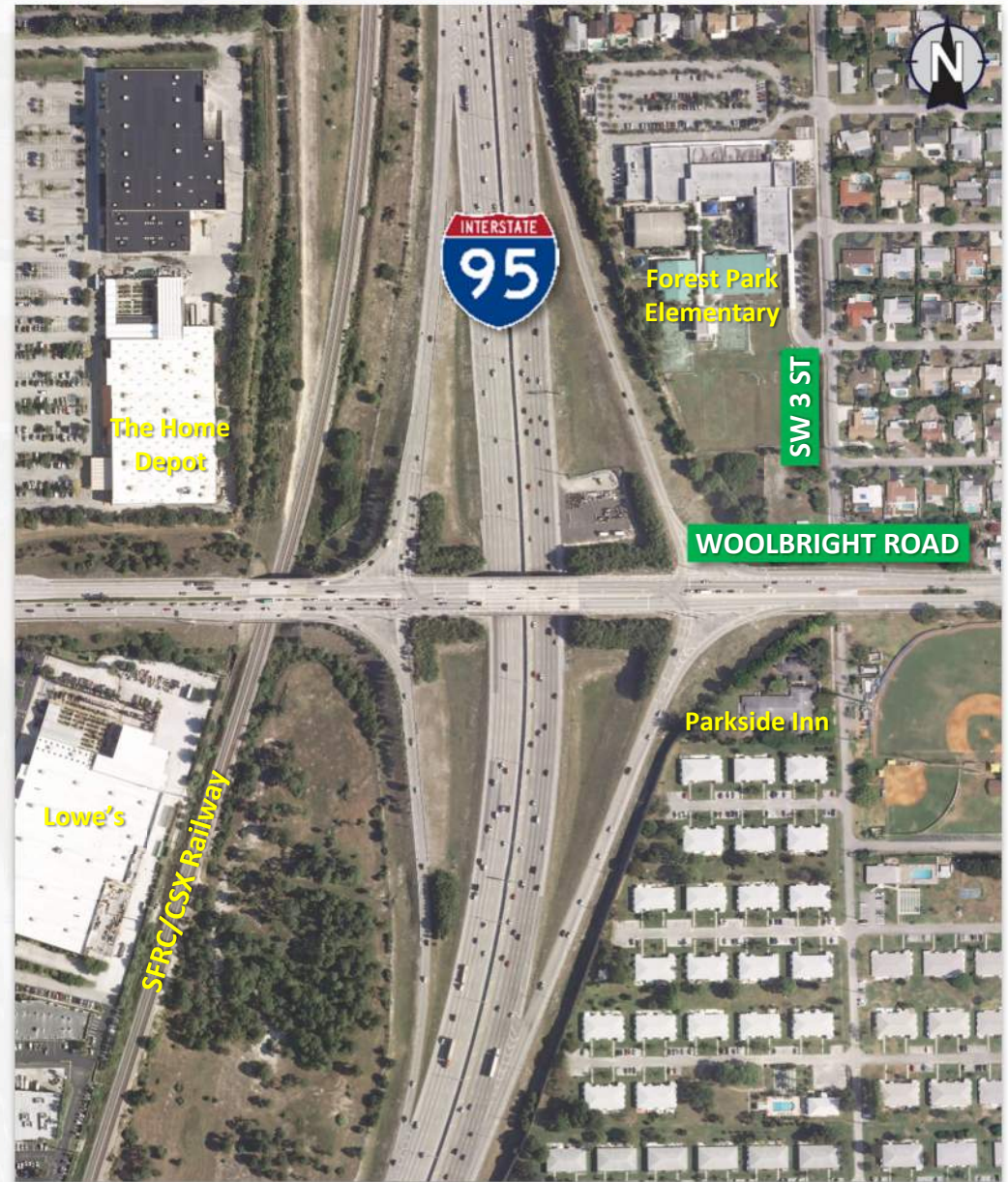


Purpose and Need

Project Purpose: The purpose of the study is to address traffic spillback onto I-95, reduce congestion on I-95 and Woolbright Road, improve interchange operations, and improve safety at the I-95 and Woolbright Road interchange through the 2045 design year horizon.

Need:

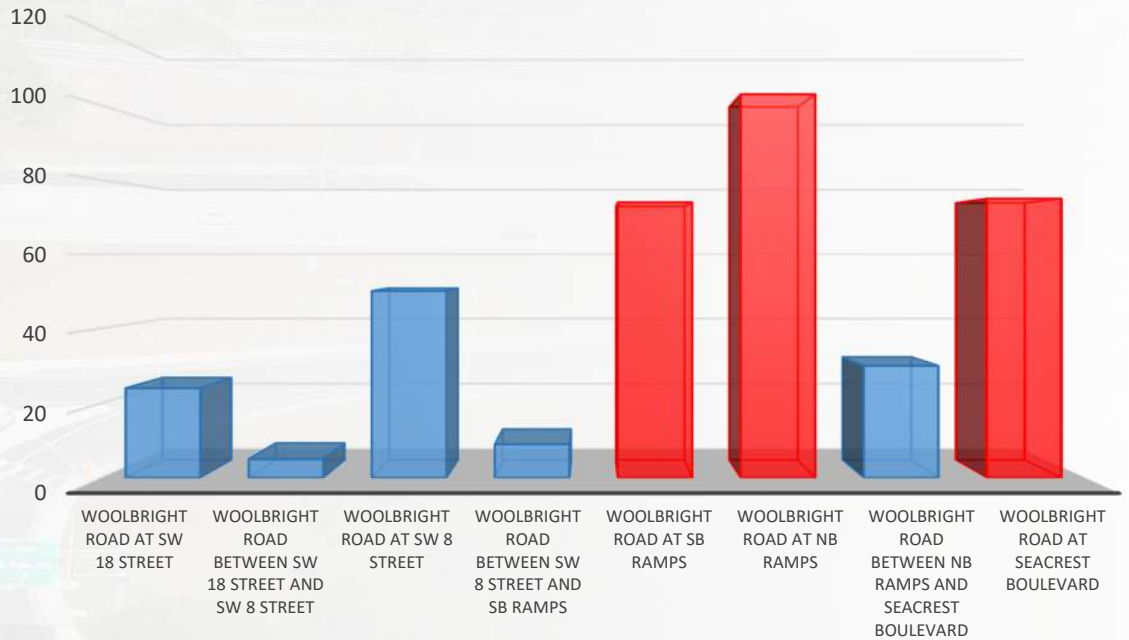
- System Linkage
- Capacity
- Transportation Demand
- Modal Interrelationships
- Safety



Existing Crash Analysis

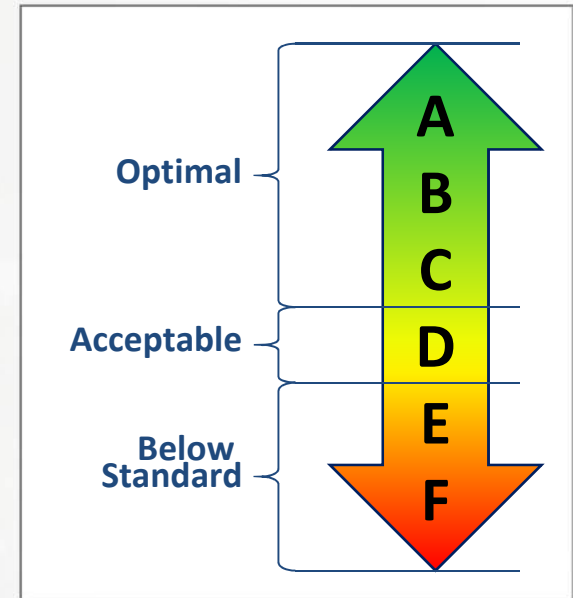
• Woolbright Road

- Five years of crash data: 2013 to 2017
- 450 crashes in total
- 312 injuries and 3 fatalities
- Prominent Crash Types:
 - Rear End (43.3%)
 - Angle (26.7%)



What is Level of Service?

- Level of Service (LOS)
 - A standard measurement, based on vehicle delay and speed, which reflects the relative ease of traffic flow on a scale of A to F
- LOS “A”: free-flow traffic
- LOS “F”: highly congested traffic conditions



Existing Conditions

Existing 2019 Traffic Conditions



Environmental Analysis

Social and Economic Effects



- Land Use Changes
- Social
- Relocation Potential
- Farmlands
- Aesthetic Effect
- Economic
- Mobility

Cultural Effects



- Historic Sites/Districts
- Archeological Sites
- Recreation Areas
- Section 4(f) Potential

Natural Resources



- Wetlands
- Aquatic Preserves
- Water Quality and Quantity
- Wild and Scenic Rivers
- Floodplains
- Protected Species and Habitat
- Essential Fish Habitat
- Coastal and Marine

Physical Effects



- Traffic Noise
- Air Quality
- Contamination
- Infrastructure

Environmental Analysis



- Efficient Transportation Decision Making (ETDM) #14341
- Effective/timely decision making without compromising environmental quality
- Enables agencies and public to provide early input about the **potential** effects of proposed transportation projects
- Anticipated Class of Action – **Type 2 Categorical Exclusion**
- For more ETDM information regarding this project please visit:

<https://etdmpub.flas-etat.org>

Screening Summary Report Chart

Issues and Categories are reflective of what was in place at the time of the screening event.

| Social and Economic | | | | | | | | | | Cultural | | Natural | | | | | Physical | | | | |
|---------------------|--------|----------------------|-----------|-------------------|----------|----------|------------------------|-----------------------------------|------------------|----------|----------------------------|-------------|----------------------|--------------------|-------|-------------|---------------|----------------|------------|----------------------|--|
| Land Use Changes | Social | Relocation Potential | Farmlands | Aesthetic Effects | Economic | Mobility | Section 4(f) Potential | Historic and Archaeological Sites | Recreation Areas | Wetlands | Water Quality and Quantity | Floodplains | Wildlife and Habitat | Coastal and Marine | Noise | Air Quality | Contamination | Infrastructure | Navigation | Special Designations | |
| 1 | 2 | 2 | N/A | 2 | 1 | 1 | 3 | 3 | 0 | 2 | 2 | 2 | 2 | 0 | 2 | 2 | 3 | 0 | N/A | 2 | |

| | |
|-----|--------------------|
| N/A | N/A No Involvement |
| 0 | None |
| 1 | Enhanced |
| 2 | Minimal |
| 3 | Moderate |
| 4 | Substantial |
| 5 | Dispute Resolution |

Environmental Analysis

Social and Economic Effects

- Enhance connectivity and mobility

Cultural Effects

- One historic cemetery located adjacent to Woolbright Road
- No previously recorded historic structures
- Section 4(f) Determination of Applicability (DOA)
 - Little League Park
 - Edward F. Harmening Arbor Memorial Park

Natural Resources

- E-4 Canal
- Listed Species: Gopher Tortoise, Wood Stork CFA, Scrub Jay, Manatee, Eastern Indigo Snake, Federally Listed Plants.

Physical Effects

- Noise Sensitive Sites: 6 residential communities, 2 schools, medical offices, Parkside Inn Assisted Living Facility, Little League Park, and Boynton Beach Memorial Park.



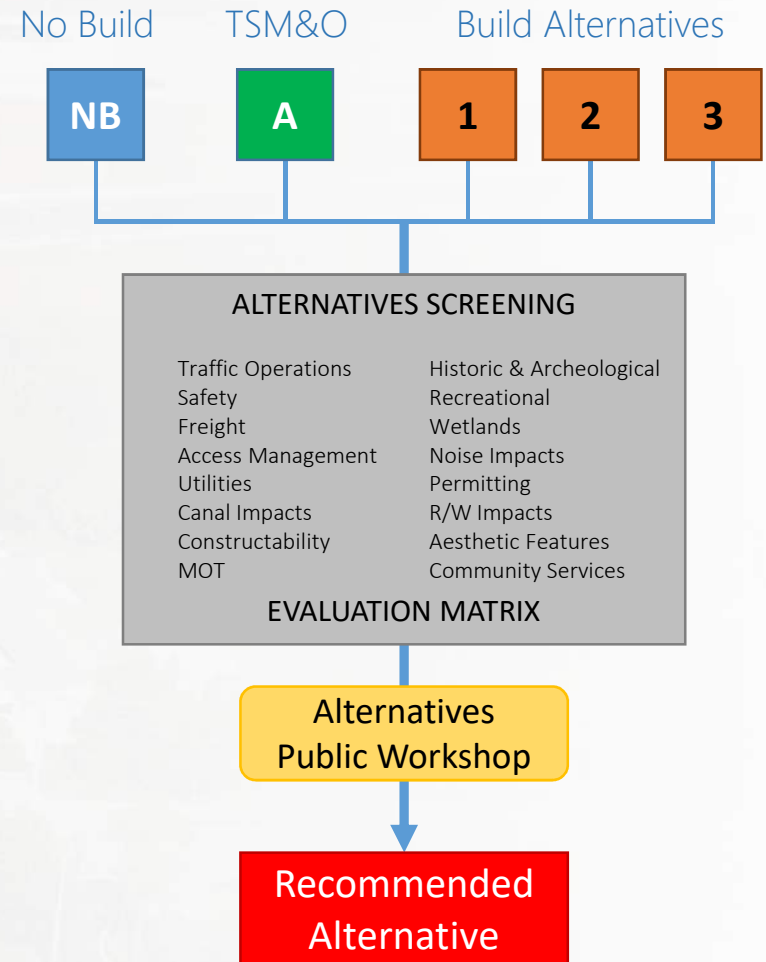
Existing 20 feet tall noise walls along the east side of I-95 south of Woolbright Road

Alternatives to be Considered

Alternatives Development and Evaluation

- Based on project need and design standards, develop conceptual alternatives:
 - No-Build
 - TSM&O Strategies
 - Build Alternatives
- Meet Purpose and Need
- Build Alternative Analysis
 - Engineering Impacts
 - Environmental Impacts
- Evaluation Matrix
- Refine Alternatives

Alternatives Evaluation Process



Agency Coordination

- City of Boynton Beach
- Palm Beach County Engineering and Public Works
- Palm Beach Transportation Planning Agency (TPA)
- Palm Tran
- Florida Department of Environmental Protection (FDEP)
- US Fish and Wildlife Service
- Florida Department of State Historical Resources
- South Florida Water Management District (SFWMD)
- Federal Highway Administration



Summary Schedule

Project Kick-Off Meeting: **May 16, 2019**

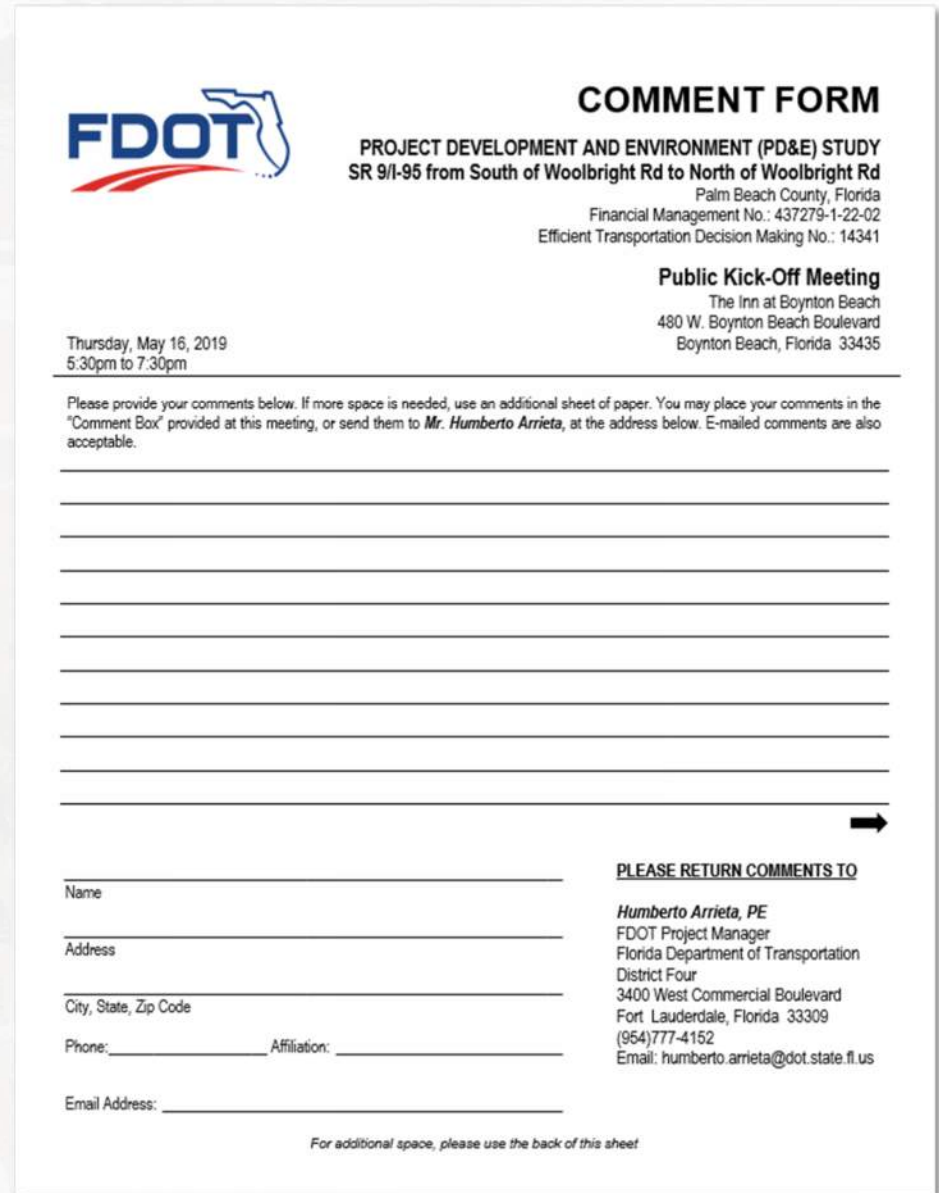
Alternatives Workshop: **Early 2020**

Public Hearing: **Fall 2020**

| ACTIVITY | 2018 | | | 2019 | | | | | | | | | | | | 2020 | | | | | | | | | | | | 2021 | | | | | | | | | |
|---|------|---|---|------|---|---|---|---|---|---|---|---|---|---|---|------|---|---|---|---|---|---|---|---|---|---|---|------|---|---|---|---|---|--|---|--|--|
| | O | N | D | J | F | M | A | M | J | J | A | S | O | N | D | J | F | M | A | M | J | J | A | S | O | N | D | J | F | M | A | M | J | | | | |
| Notice to Proceed | ● | | | | | | | | | | | | | | | | | | | | | | | | | | | | | | | | | | | | |
| Fact Sheet/Newsletter | | | | | | | 📄 | | | | | | 📄 | | | | | | | | | | | 📄 | | | | | | | | | | | | | |
| Elected Officials/Agency Kick-Off Meeting | | | | | | | | ● | | | | | | | | | | | | | | | | | | | | | | | | | | | | | |
| Public Kick-Off Meeting | | | | | | | | ● | | | | | | | | | | | | | | | | | | | | | | | | | | | | | |
| Engineering Data Collection | | | | ▬ | | | | | | | | | | | | | | | | | | | | | | | | | | | | | | | | | |
| Engineering Analysis | | | | | | | | | ▬ | | | | | | | | | | | | | | | | | | | | | | | | | | | | |
| Environmental Data Collection | | | | | | | | | ▬ | | | | | | | | | | | | | | | | | | | | | | | | | | | | |
| Environmental Analysis | | | | | | | | | | ▬ | | | | | | | | | | | | | | | | | | | | | | | | | | | |
| Develop and Evaluate Alternatives | | | | | | | | | | | | | | ▬ | | | | | | | | | | | | | | | | | | | | | | | |
| Alternatives Public Workshop | | | | | | | | | | | | | | | | | ● | | | | | | | | | | | | | | | | | | | | |
| Engineering Reports | | | | | | | | | | | | | | | | ▬ | | | | | | | | | | | | | | | | | | | | | |
| Environmental Reports | | | | | | | | | | | | | | | | ▬ | | | | | | | | | | | | | | | | | | | | | |
| Public Hearing | | | | | | | | | | | | | | | | | | | | | | | | | | | | | | | | | | | | | |
| Office of Environmental Management (OEM) | | | | | | | | | | | | | | | | | | | | | | | | | | | ▬ | | | | | | | | | | |
| Location and Design Concept Acceptance (LDCA) | | | | | | | | | | | | | | | | | | | | | | | | | | | | | | | | | | | ★ | | |
| Continuous Public Involvement | ▬➔ | | | | | | | | | | | | | | | | | | | | | | | | | | | | | | | | | | | | |

Public Involvement

- Agency/Public Kick-Off Meetings
- Alternatives Public Workshop
- Public Hearing
- Coordination with local communities
- Coordination with major stakeholders
- Many opportunities for public comments:
 - Complete a Comment Form today
 - Mail, e-mail, or fax your comments
 - Visit the project's website:
www.fdot.gov/project/95atwoolbright.com



FDOT

COMMENT FORM

PROJECT DEVELOPMENT AND ENVIRONMENT (PD&E) STUDY
SR 9/I-95 from South of Woolbright Rd to North of Woolbright Rd
Palm Beach County, Florida
Financial Management No.: 437279-1-22-02
Efficient Transportation Decision Making No.: 14341

Public Kick-Off Meeting
The Inn at Boynton Beach
480 W. Boynton Beach Boulevard
Boynton Beach, Florida 33435

Thursday, May 16, 2019
5:30pm to 7:30pm

Please provide your comments below. If more space is needed, use an additional sheet of paper. You may place your comments in the "Comment Box" provided at this meeting, or send them to *Mr. Humberto Arrieta*, at the address below. E-mailed comments are also acceptable.

➔

Name _____
Address _____
City, State, Zip Code _____
Phone: _____ Affiliation: _____
Email Address: _____

PLEASE RETURN COMMENTS TO
Humberto Arrieta, PE
FDOT Project Manager
Florida Department of Transportation
District Four
3400 West Commercial Boulevard
Fort Lauderdale, Florida 33309
(954)777-4152
Email: humberto.arrieta@dot.state.fl.us

For additional space, please use the back of this sheet



Thank You!

Humberto Arrieta, PE
Project Manager
FDOT – District Four
3400 W. Commercial Blvd.
Fort Lauderdale, FL 33309
Phone: (954) 777-4152
E-mail: humberto.arrieta@dot.state.fl.us

