



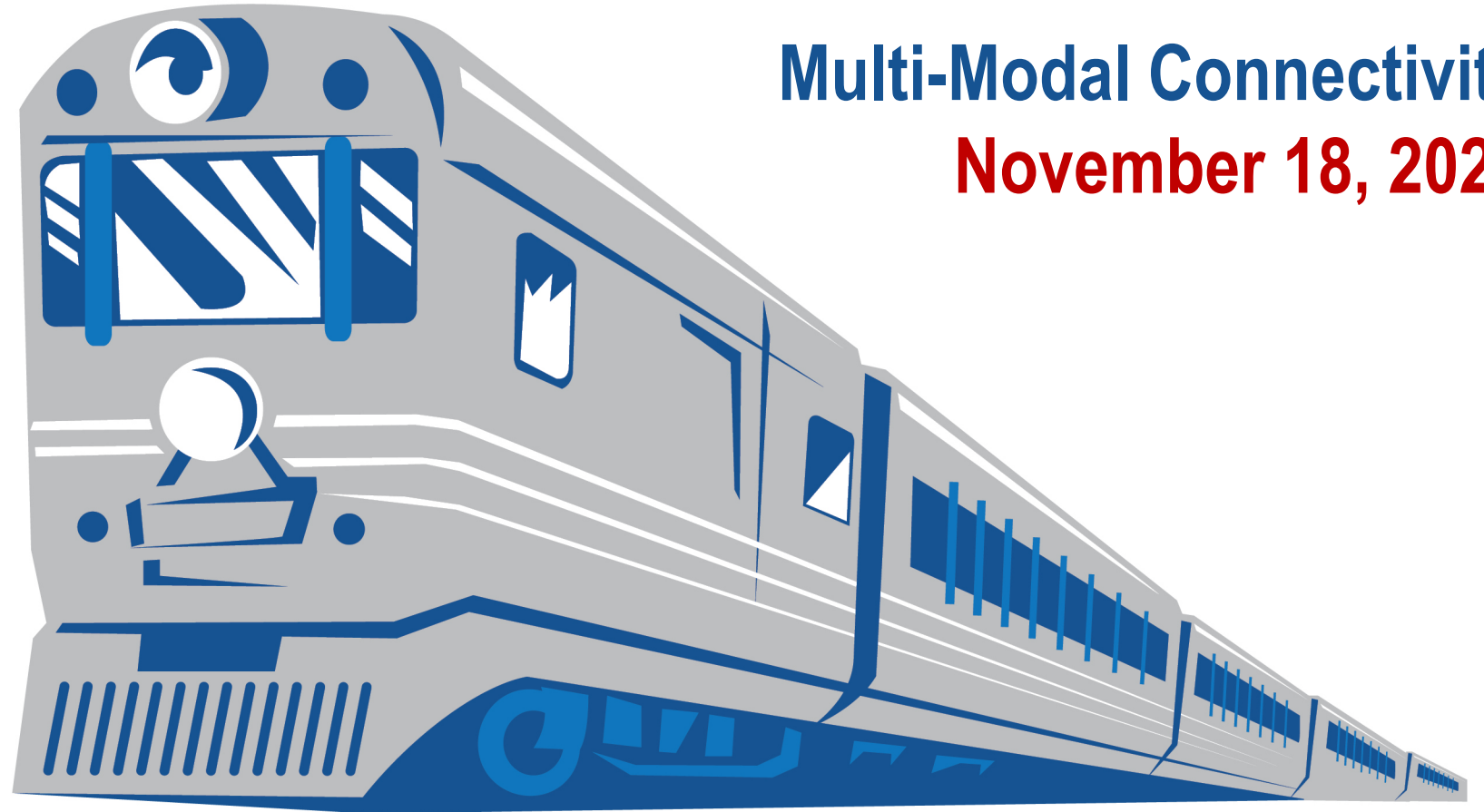

BROWARD COMMUTER RAIL (BCR)
PROJECT DEVELOPMENT & ENVIRONMENT (PD&E) STUDY



FLORIDA DEPARTMENT OF TRANSPORTATION (FDOT), DISTRICT 4
 BROWARD COUNTY, FLORIDA • FPID: 448942-1

Multi-Modal Connectivity

November 18, 2021



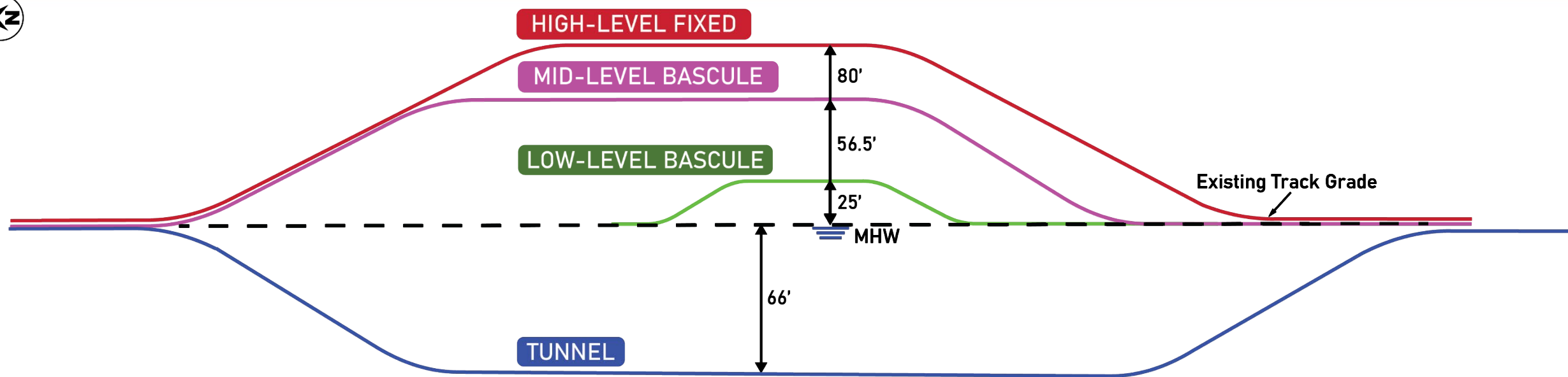
New River Crossing Workshop

Multi-Modal Connectivity

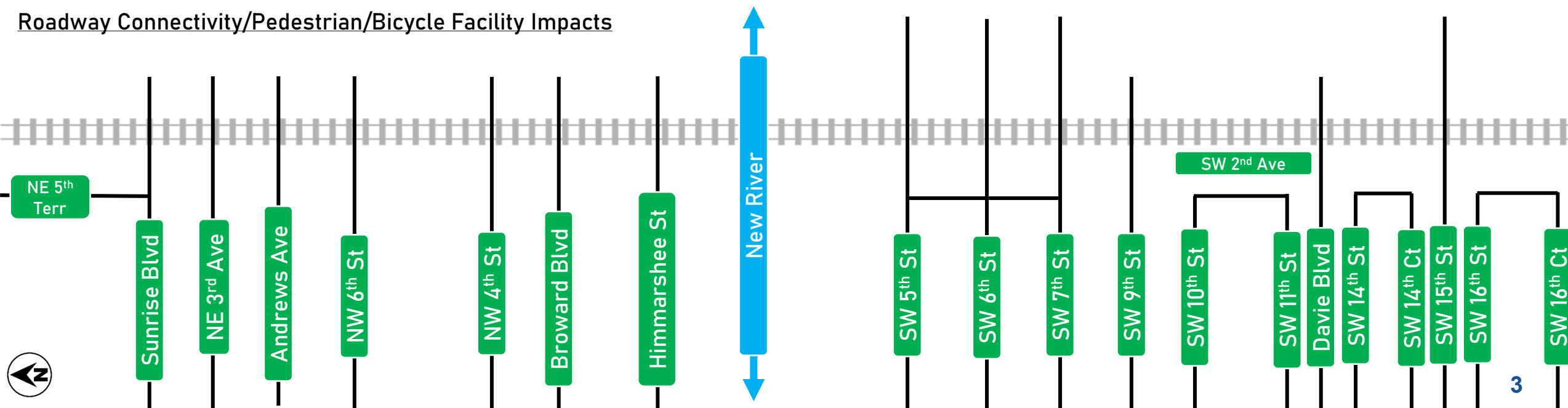


□ The purpose of this breakout session is to provide information and details of how roadway connectivity, pedestrians and bicycle facilities may be affected by the four New River Bridge Crossing alternatives.

1. Low Level
2. Mid Level
3. High Level
4. Tunnel



Roadway Connectivity/Pedestrian/Bicycle Facility Impacts





Railroad Crossing Closure

- SW 5th Street

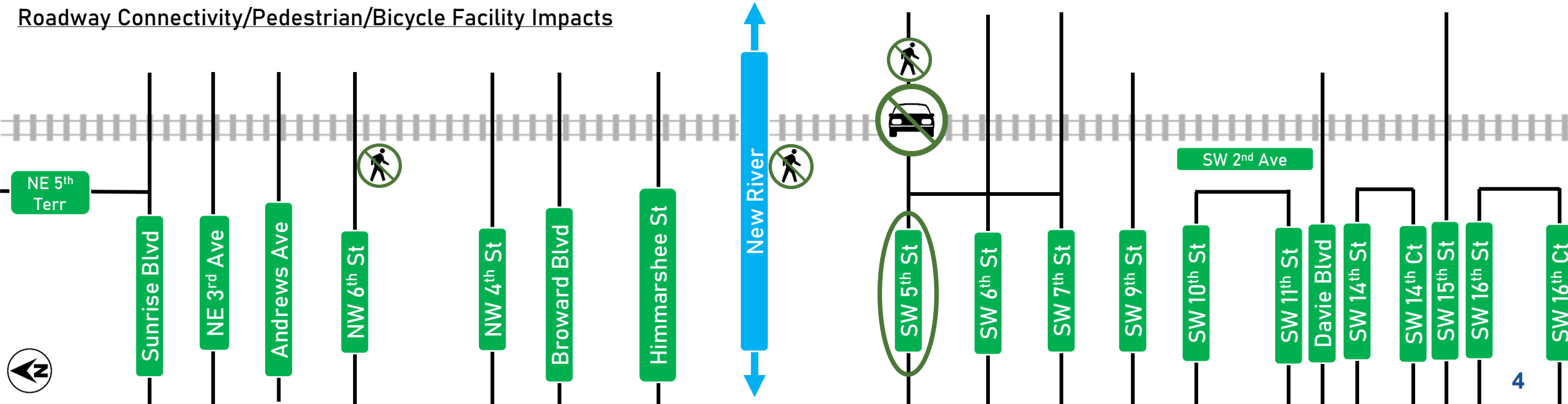
LOW-LEVEL BASCULE



Pedestrian/Bicycle Facility Re-routes

- SW 5th Street
- South of the River
- South of NW 6th Street

Roadway Connectivity/Pedestrian/Bicycle Facility Impacts



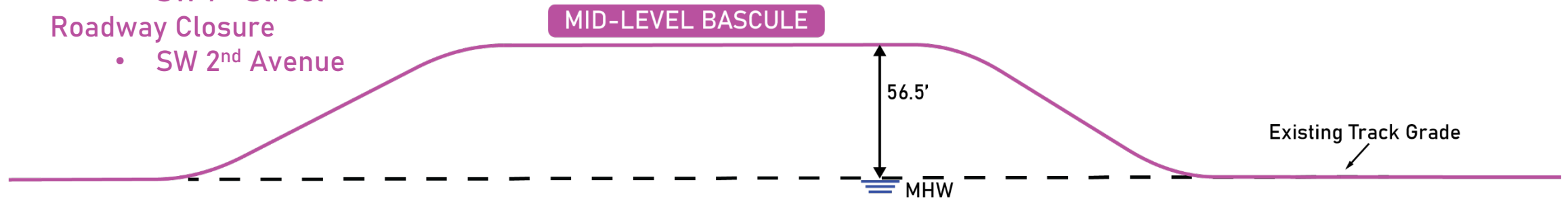


Railroad Crossing Closure

- SW 7th Street

Roadway Closure

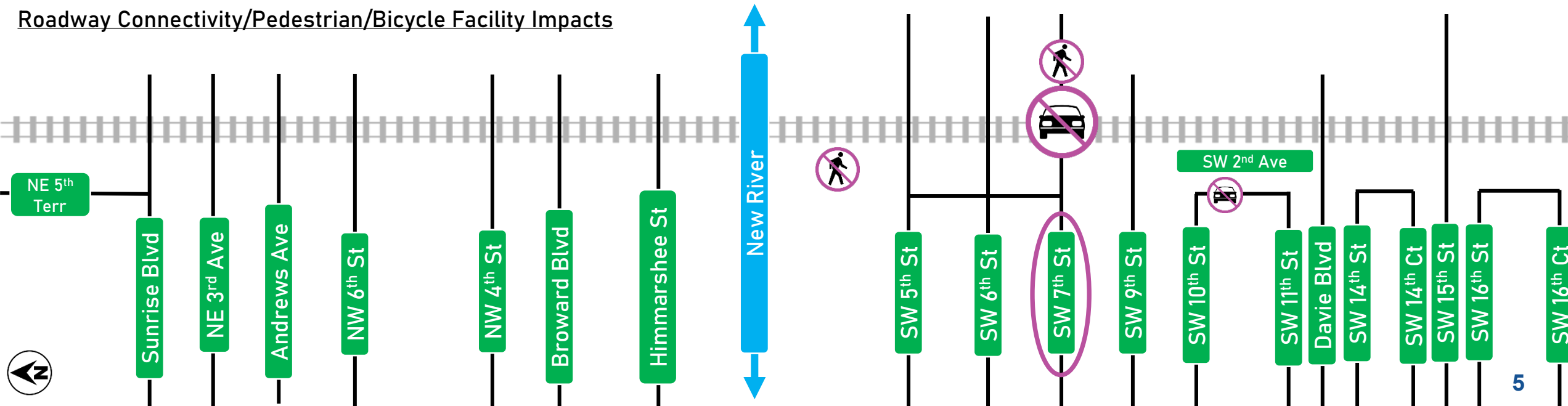
- SW 2nd Avenue



Pedestrian/Bicycle Facility Re-Routes

- SW 7th Street
- South of the River

Roadway Connectivity/Pedestrian/Bicycle Facility Impacts





HIGH-LEVEL FIXED

80'

Existing Track Grade

MHW

Railroad Crossing Height Restriction

- SW 9th Street

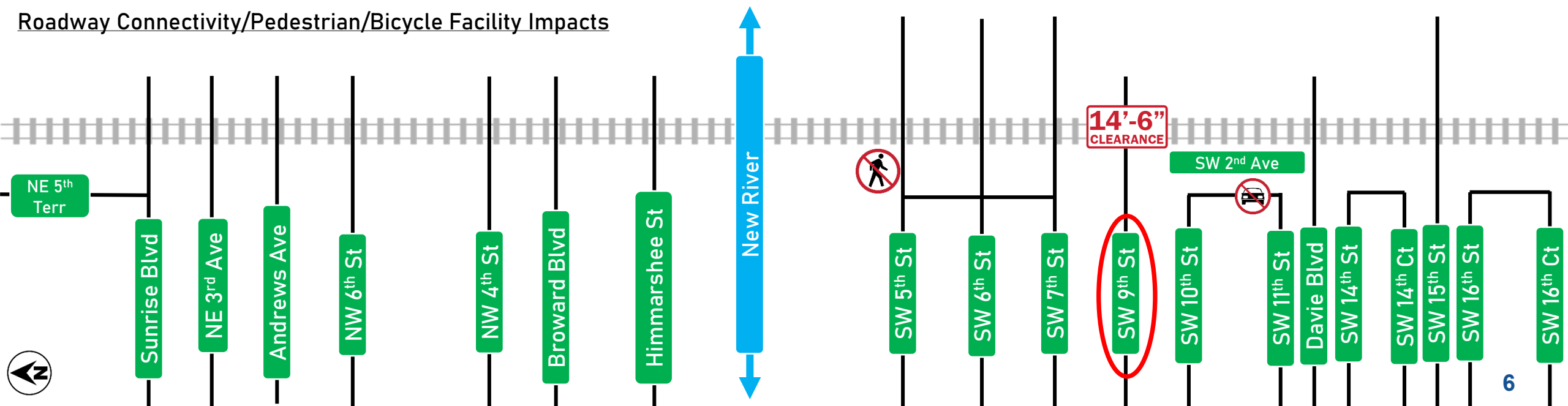
Roadway Closure

- SW 2nd Avenue

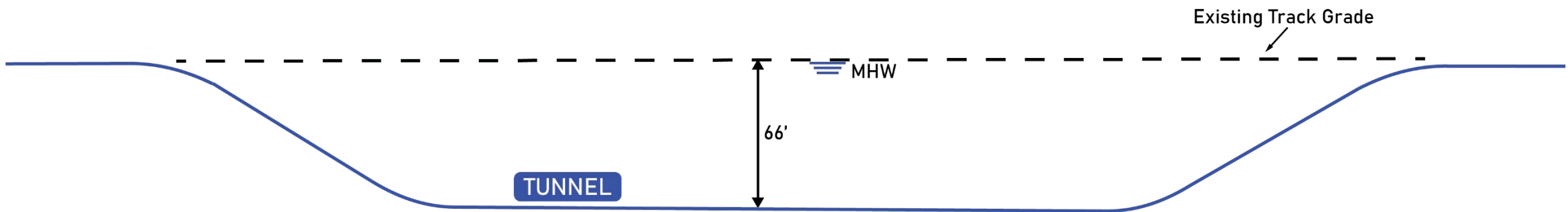
Pedestrian/Bicycle Facility Re-Route

- South of the River

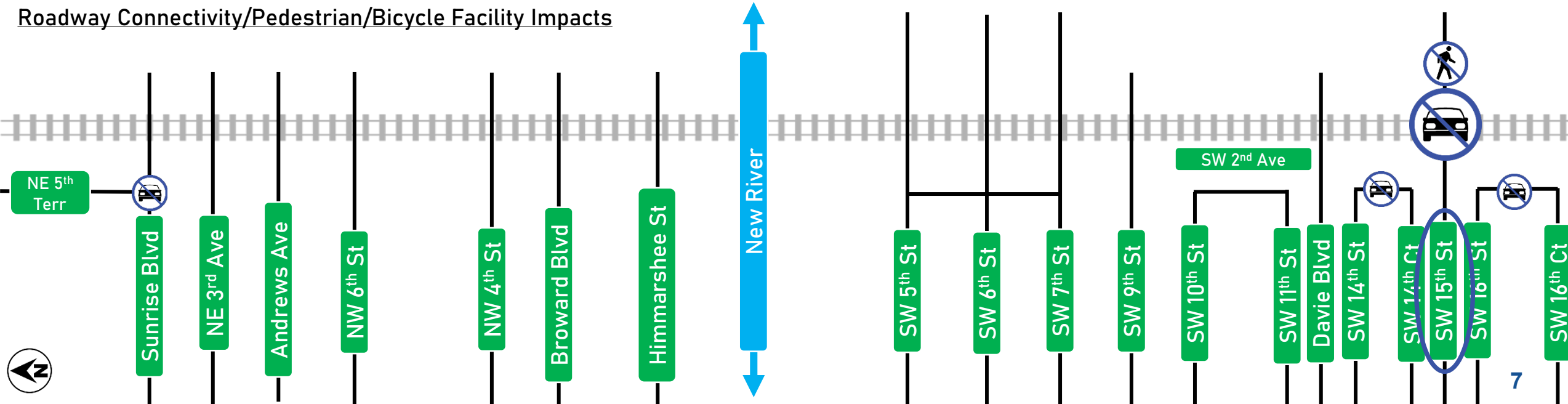
Roadway Connectivity/Pedestrian/Bicycle Facility Impacts



- ⬅️ Railroad Crossing Closure - SW 15th Street
- Roadway Closures - SW 2nd Avenue
- Intersection Closure - NE 5th Terrace
- Pedestrian/Bicycle Facility Re-Route - SW 15th Street

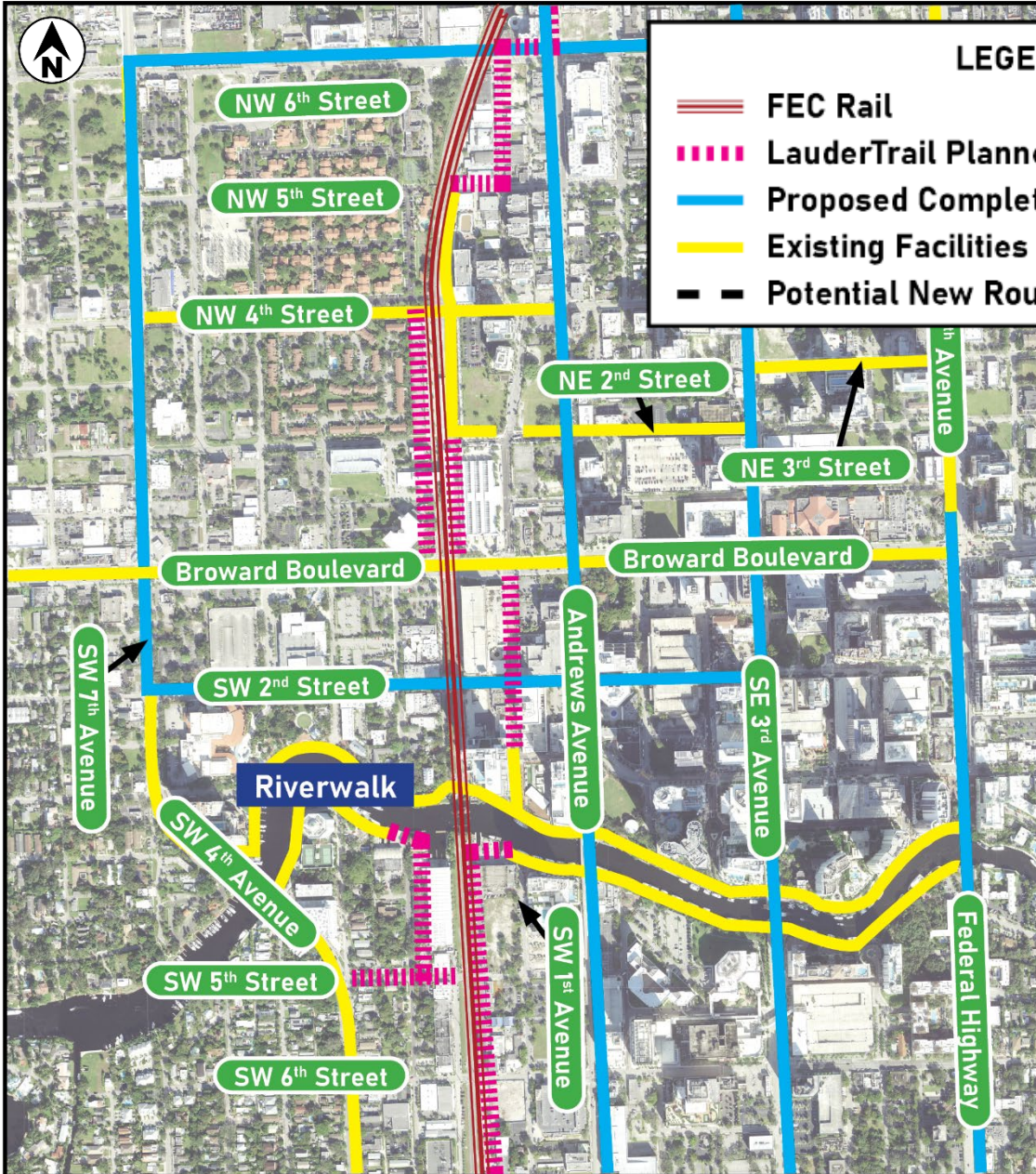


Roadway Connectivity/Pedestrian/Bicycle Facility Impacts



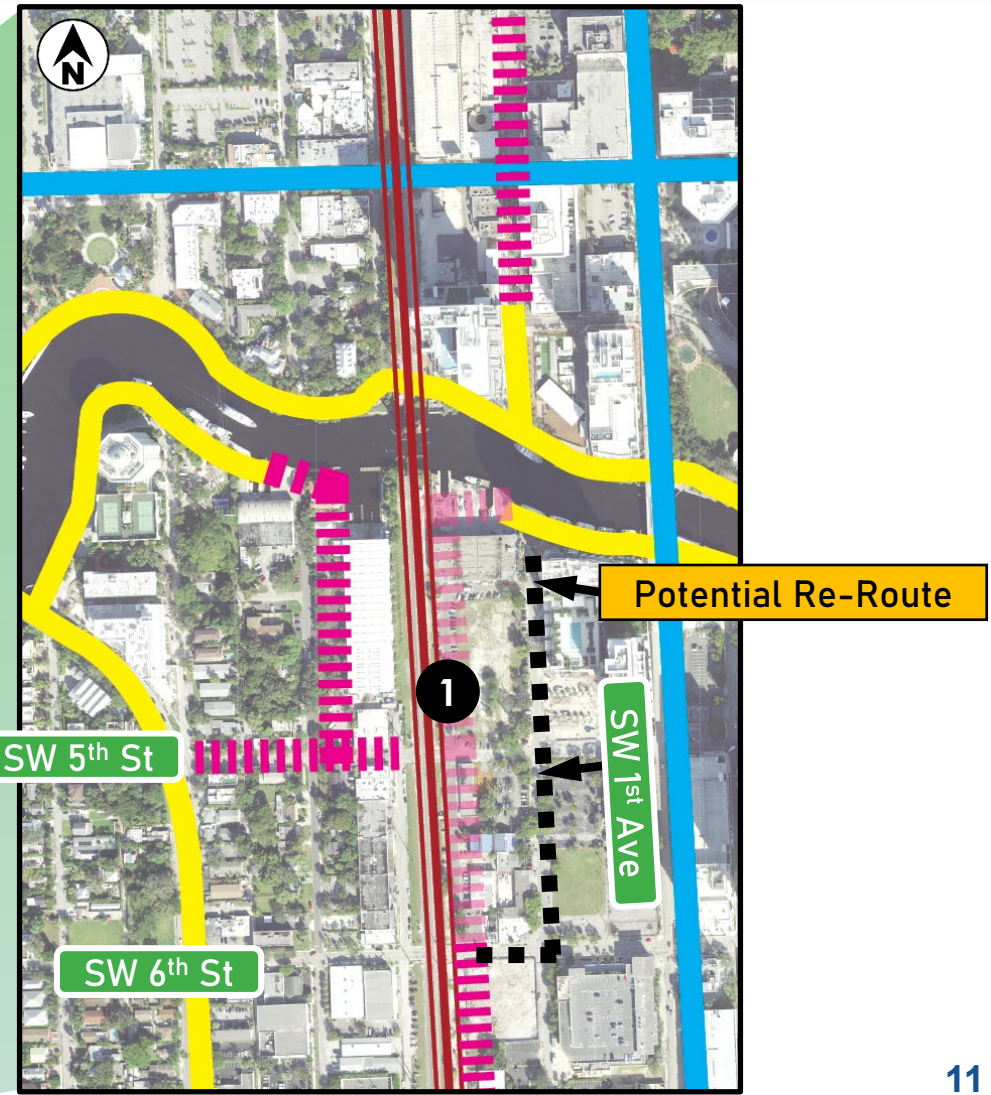
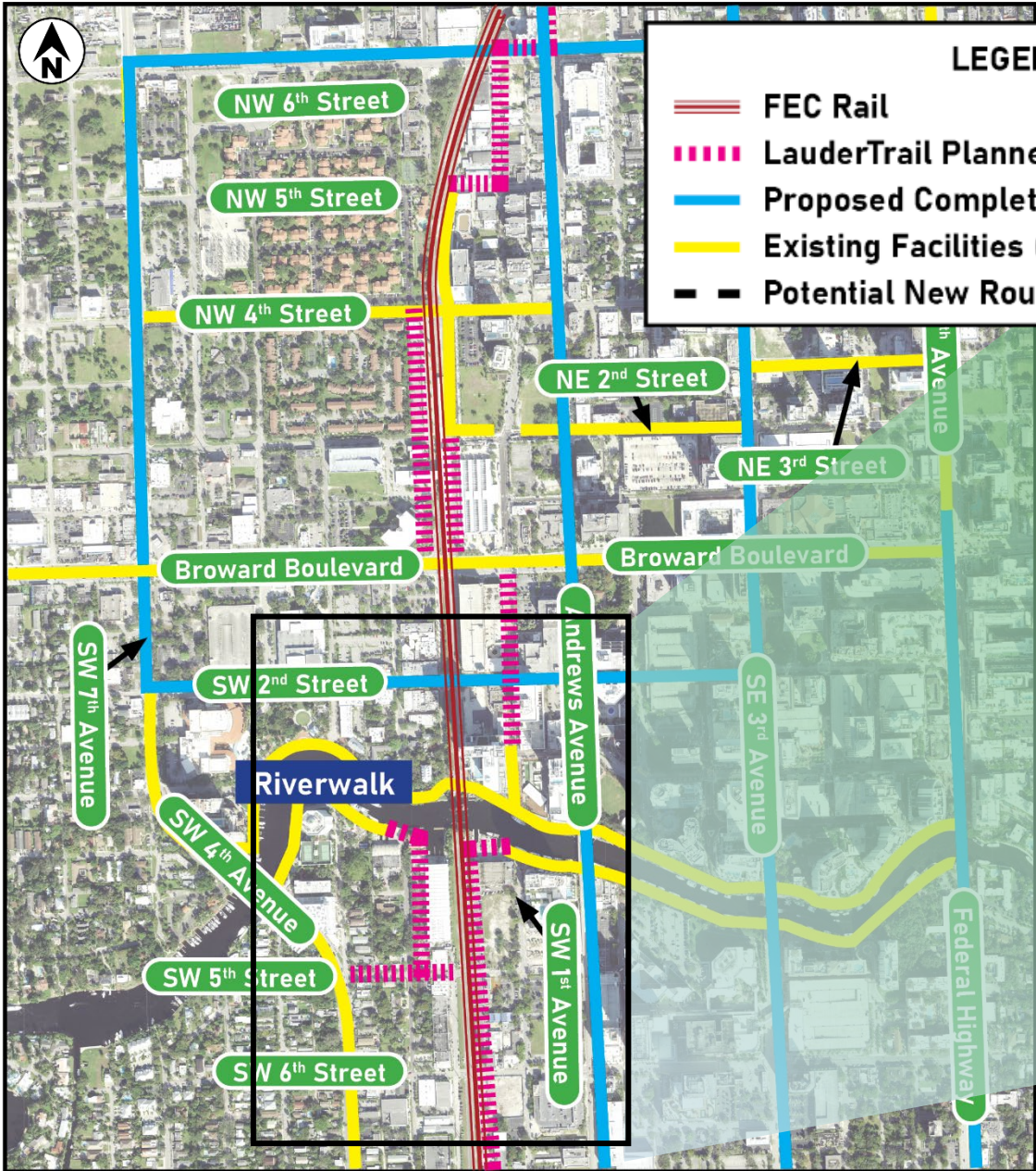




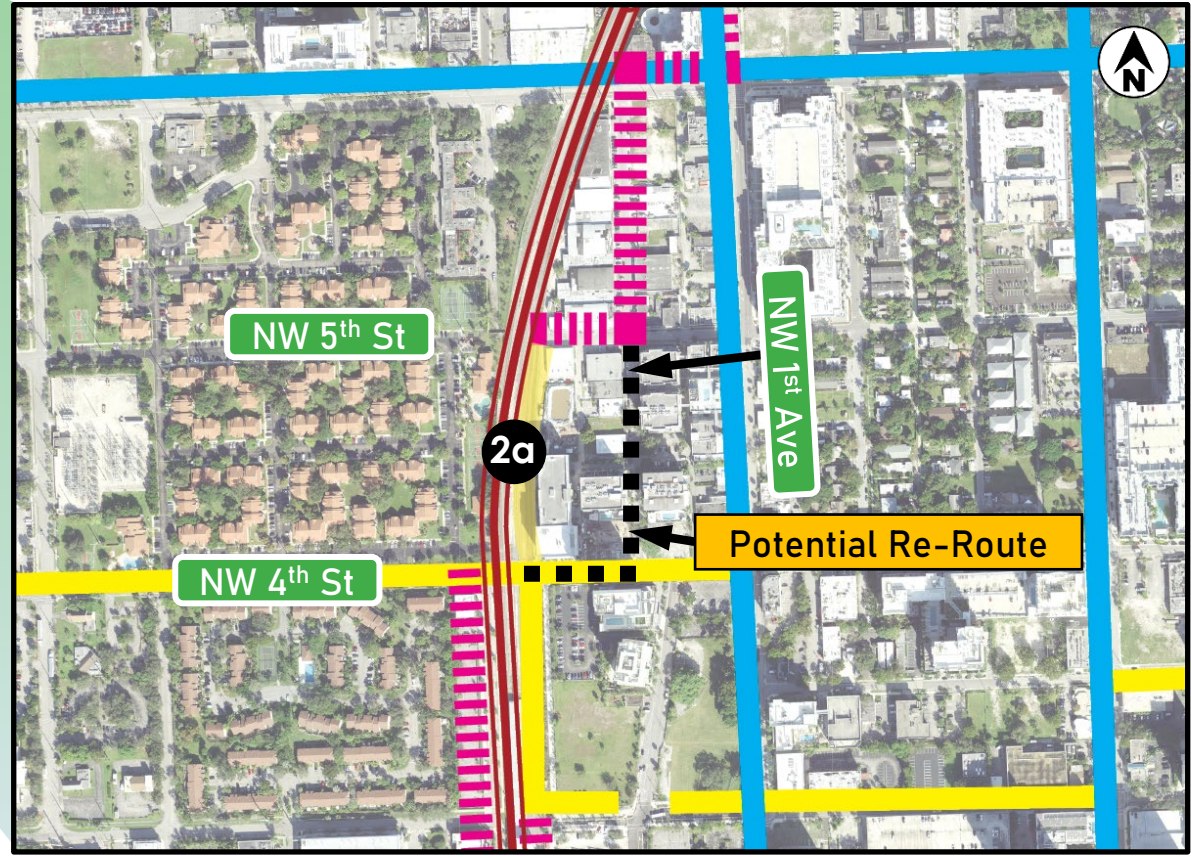
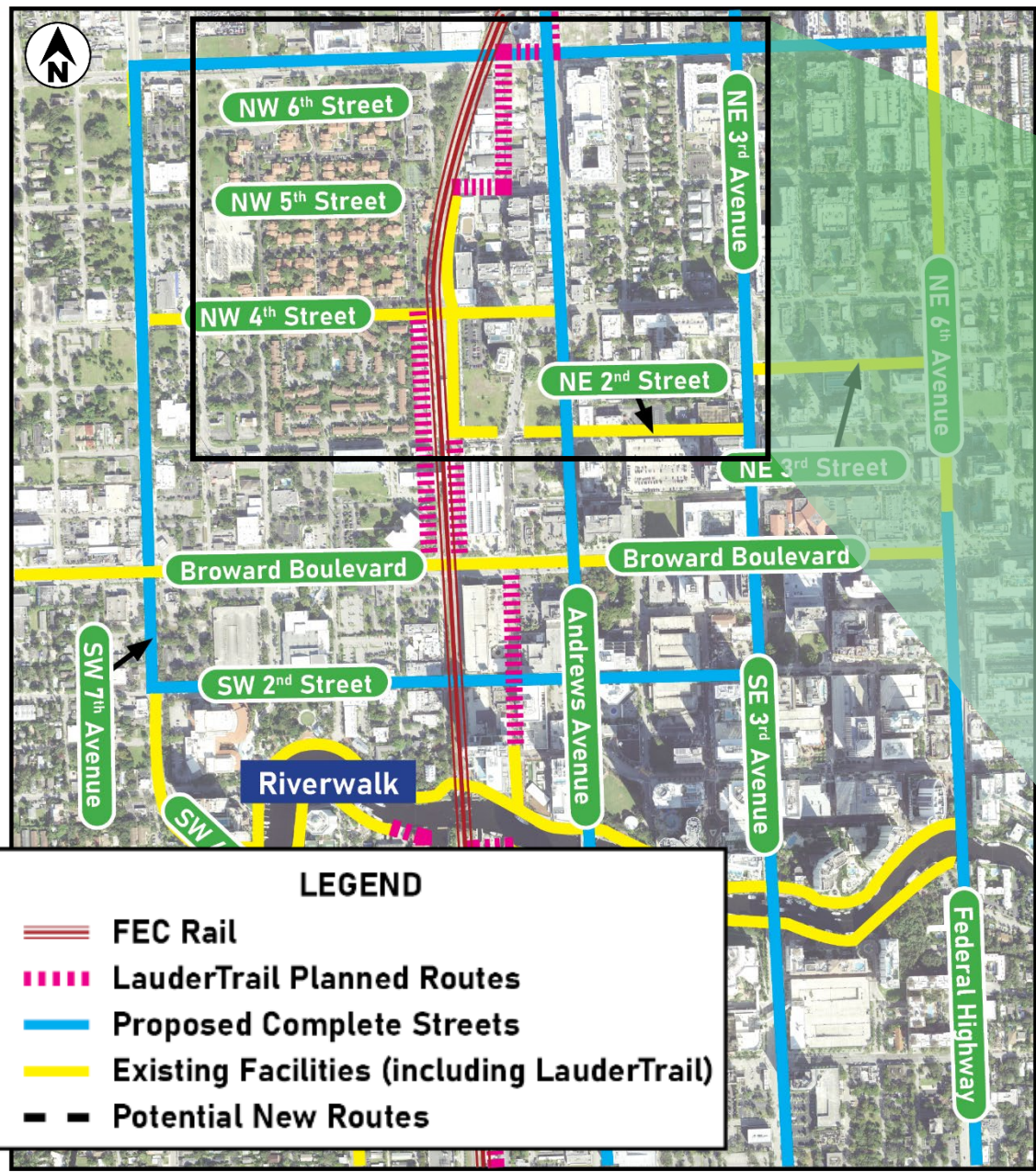


LEGEND

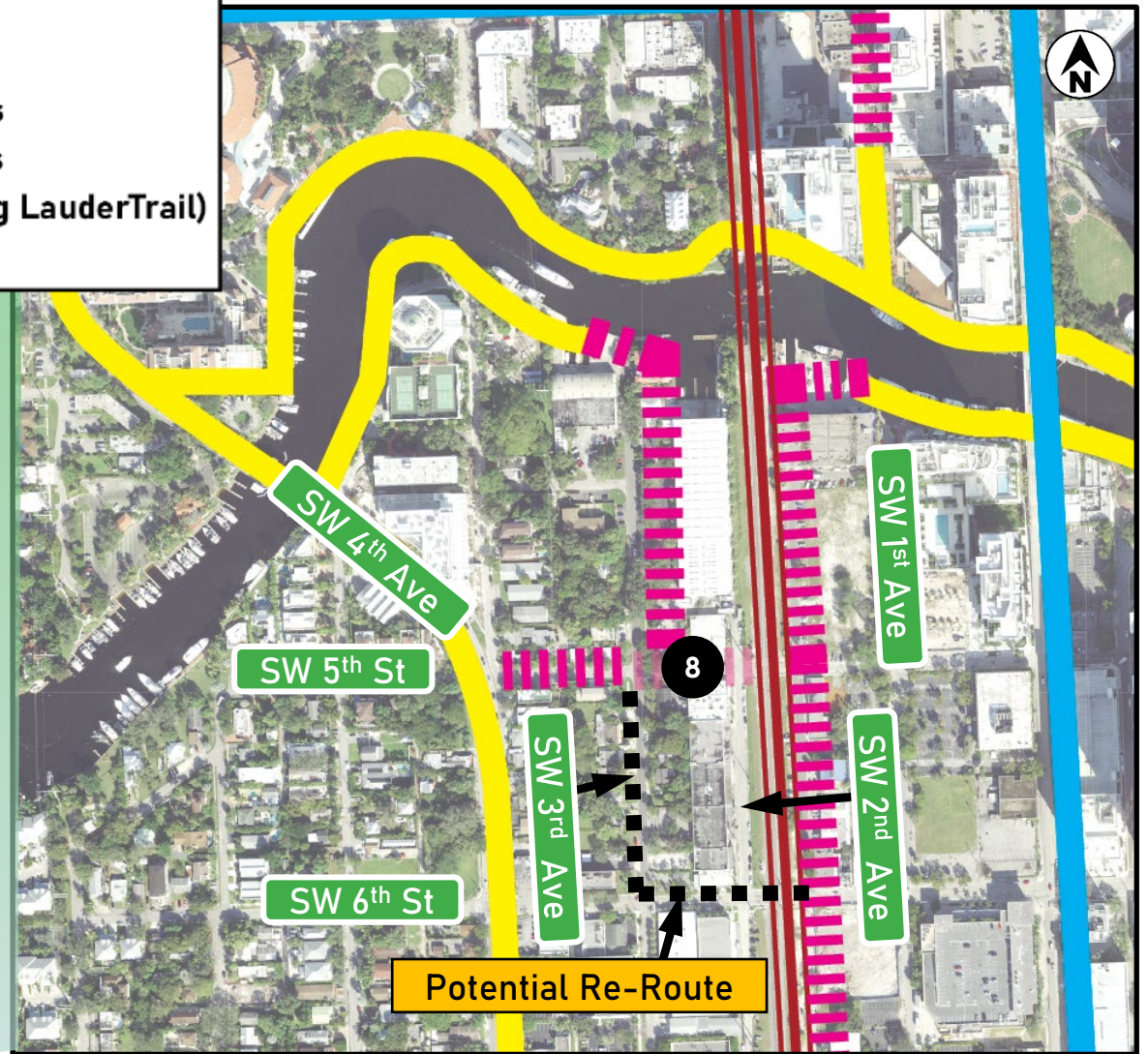
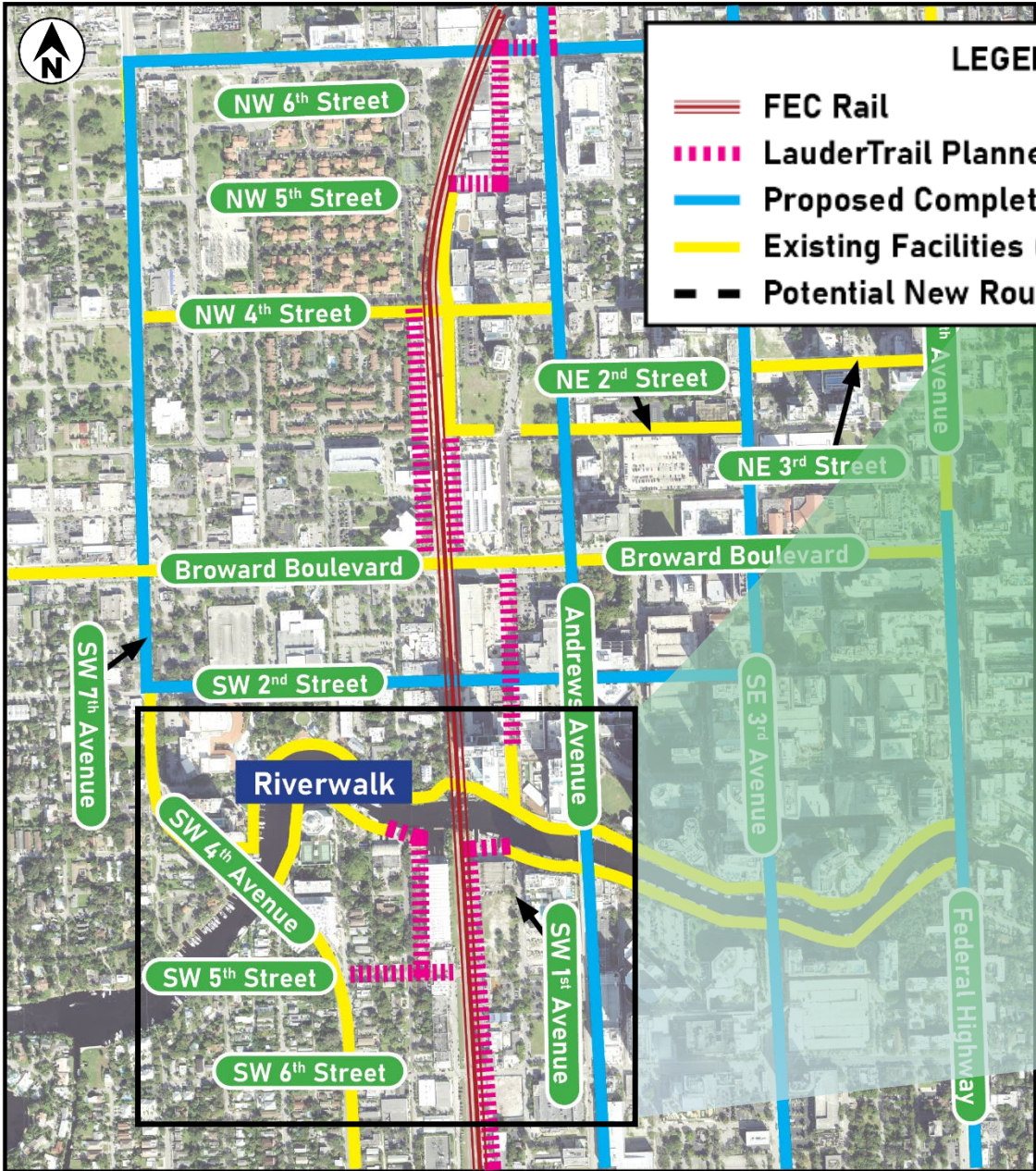
- ▬▬ FEC Rail
- - - - LauderTrail Planned Routes
- ▬ Proposed Complete Streets
- ▬ Existing Facilities (including LauderTrail)
- - - - Potential New Routes



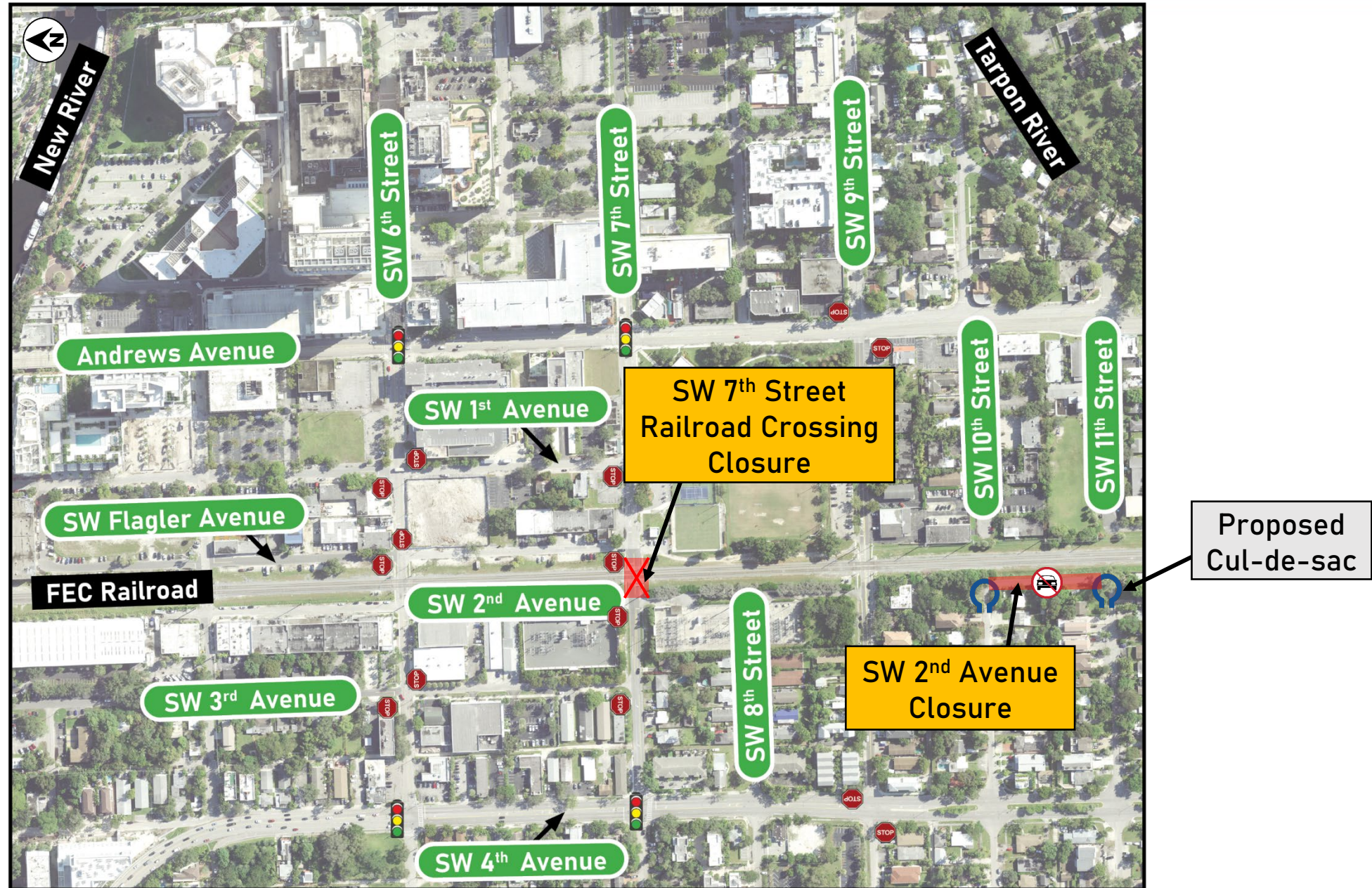
- **Facility 1 (Planned LauderTrail)** – Needs to be relocated to SW 1st Avenue between SW 6th St and the river due to railway shift to the east.

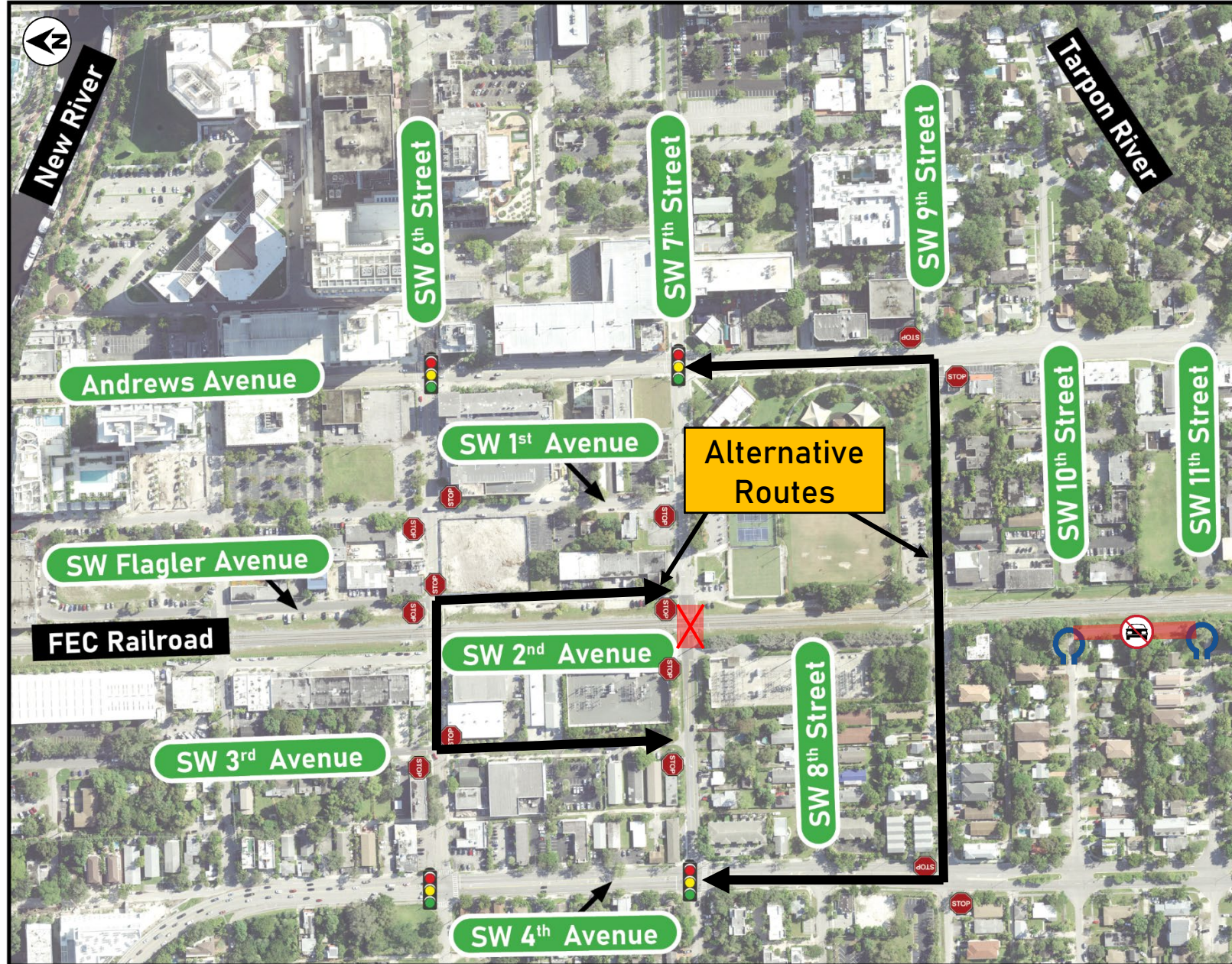


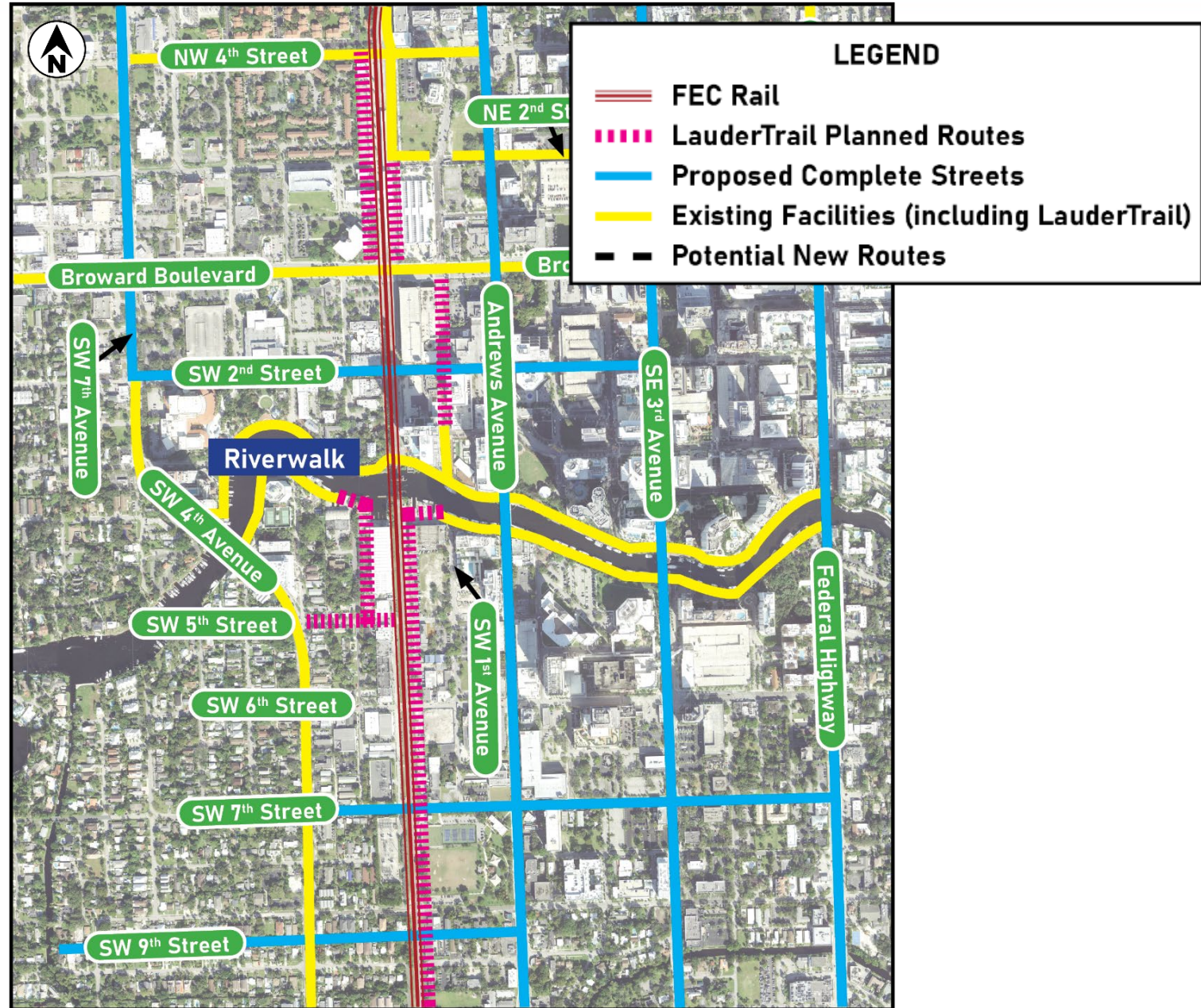
Facility 2a (Existing Facility) – Needs to be relocated to NW 1st Avenue between NW 4th Street and NW 5th Street due to railway shift to the east.

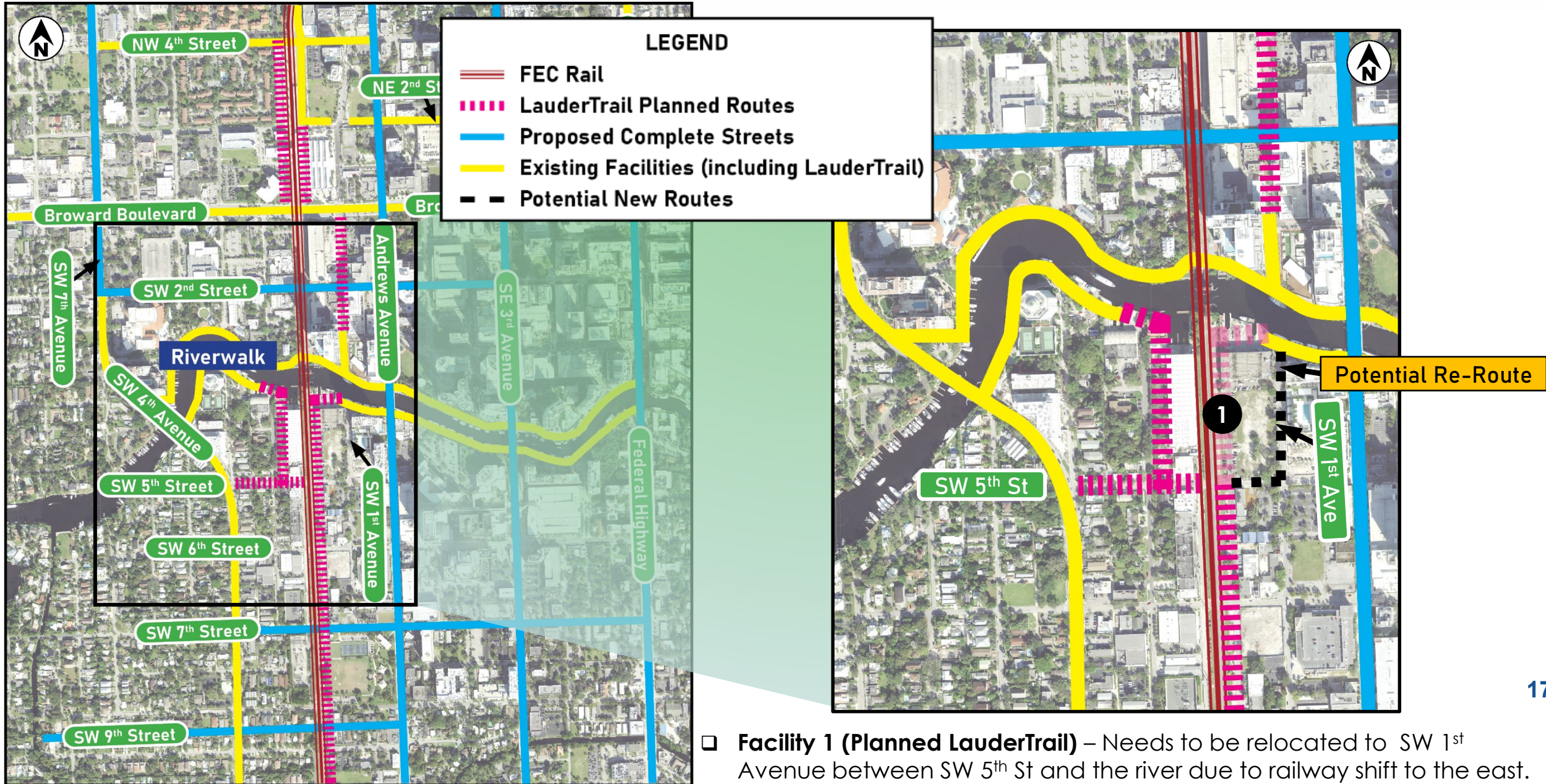


□ **Facility 8 (Planned LauderTrail)** – Needs to be relocated to SW 6th Street due to the SW 5th Street railroad crossing closure.

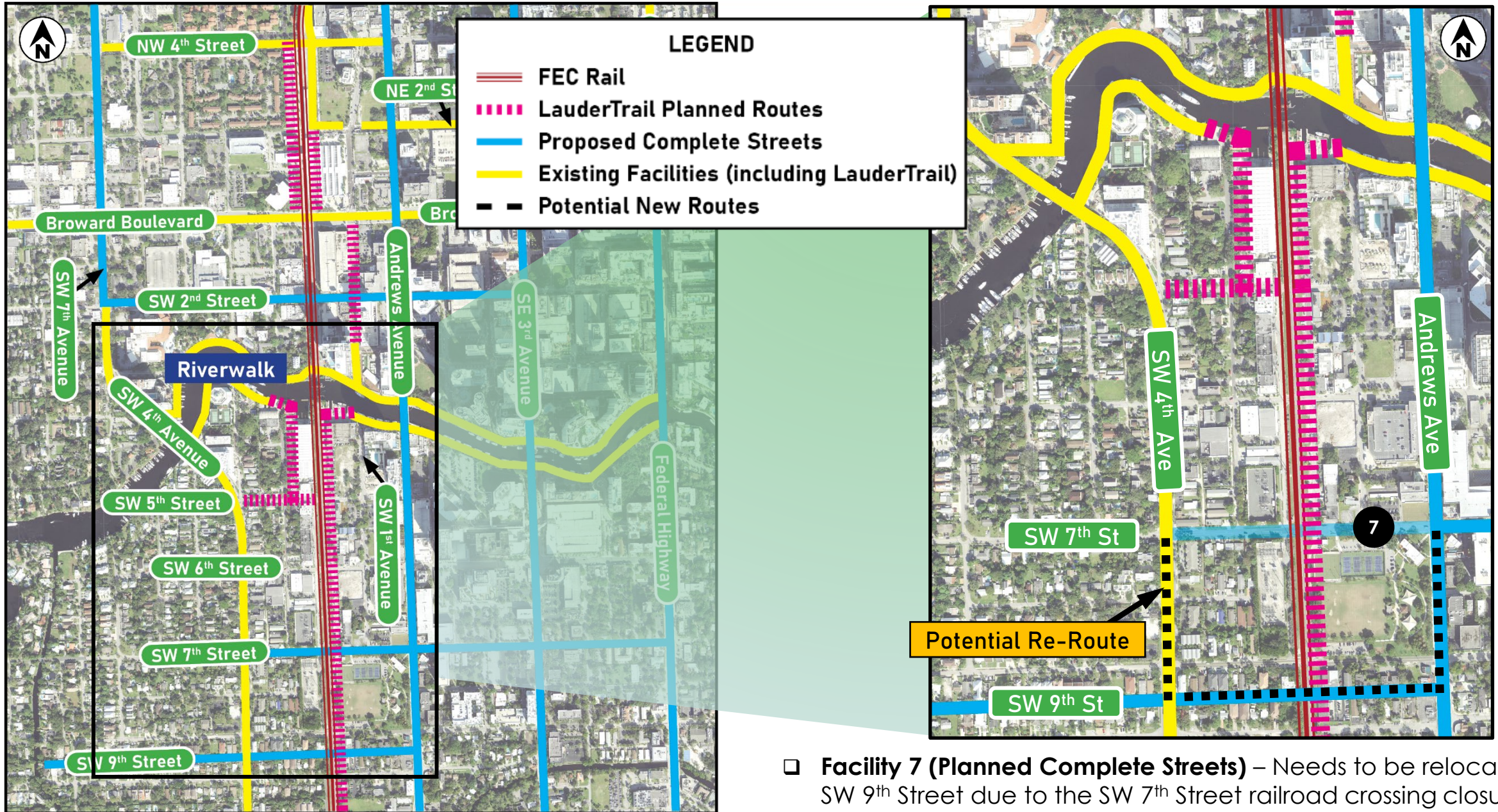






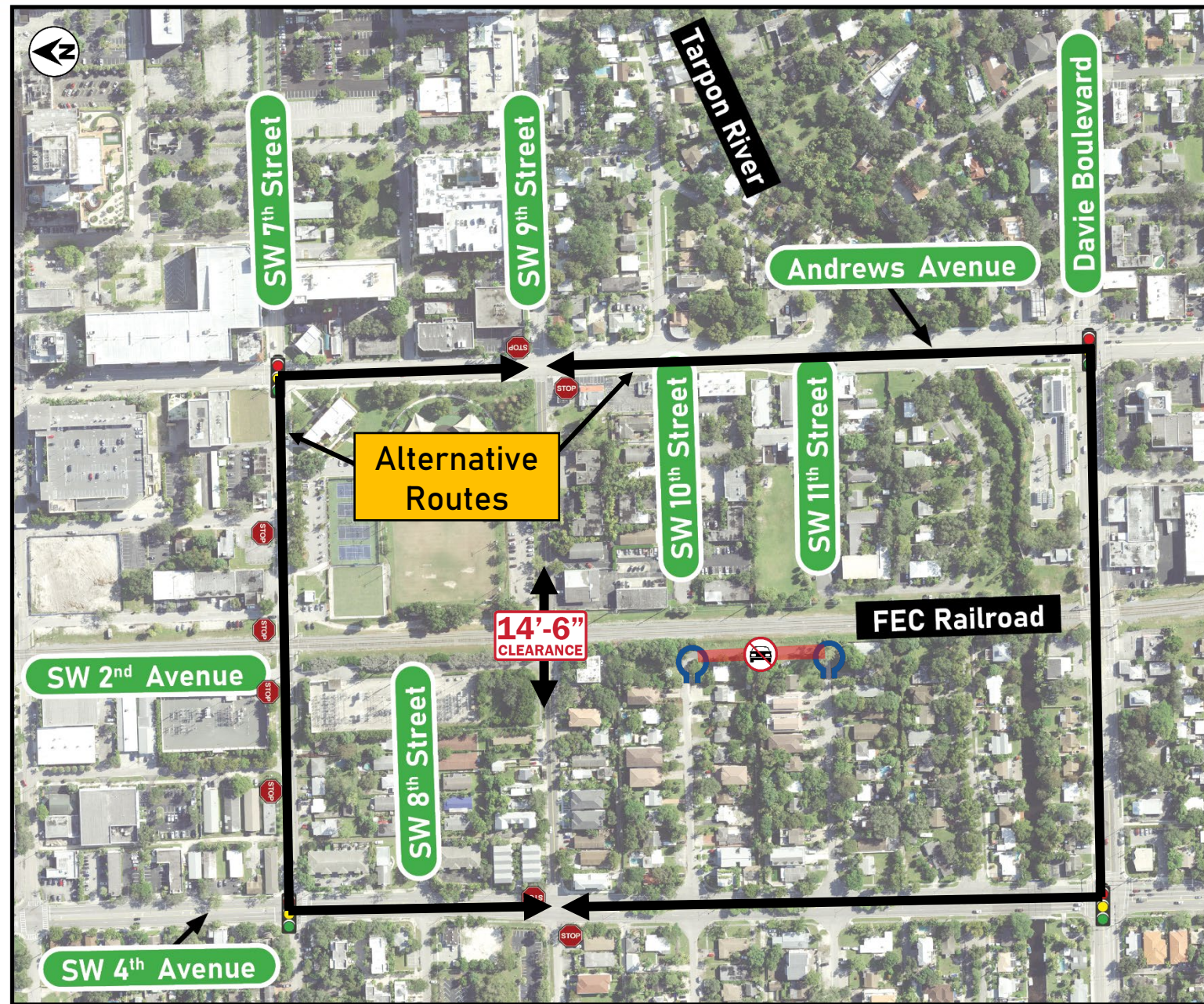


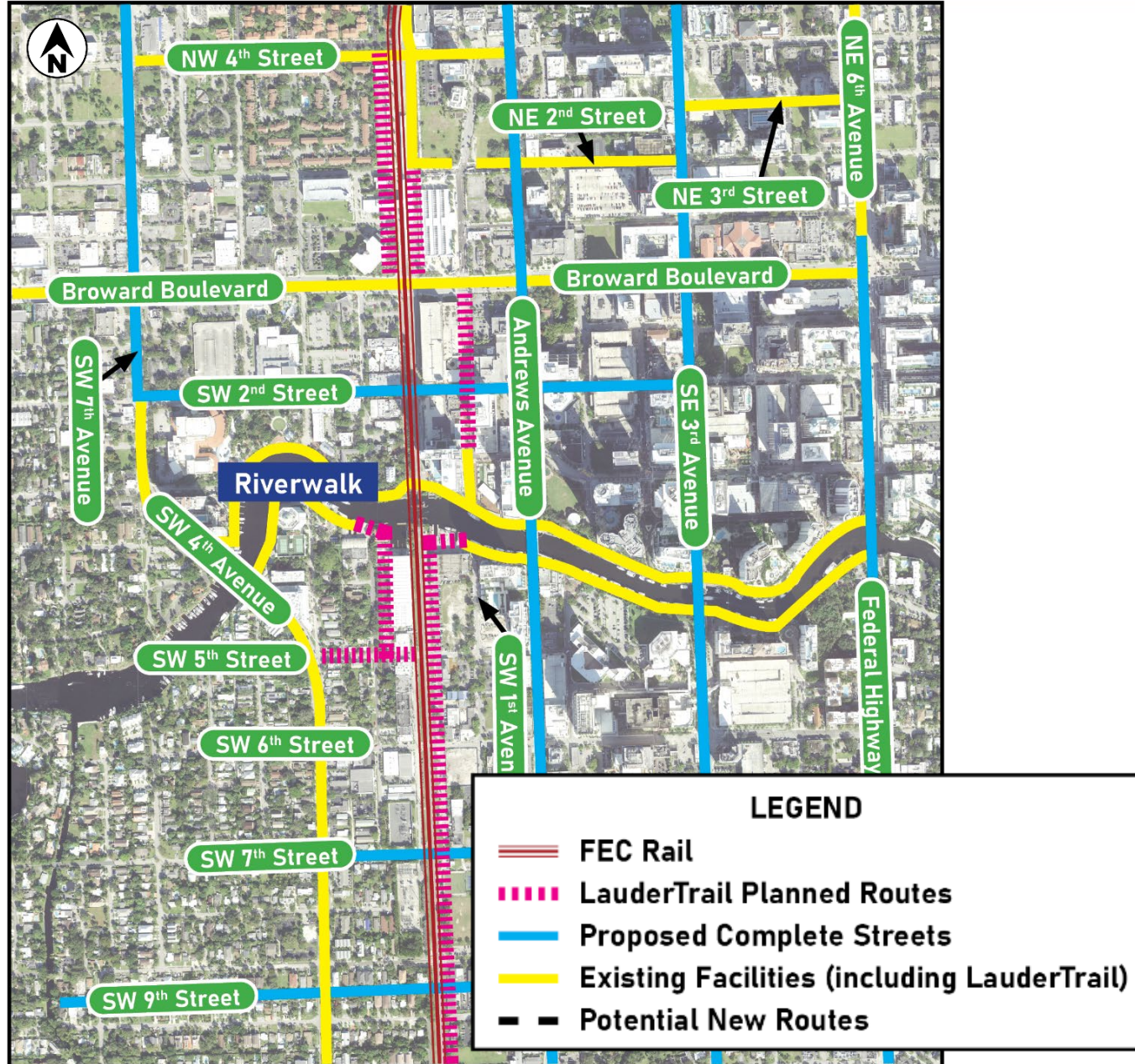
□ **Facility 1 (Planned LauderTrail)** – Needs to be relocated to SW 1st Avenue between SW 5th St and the river due to railway shift to the east.

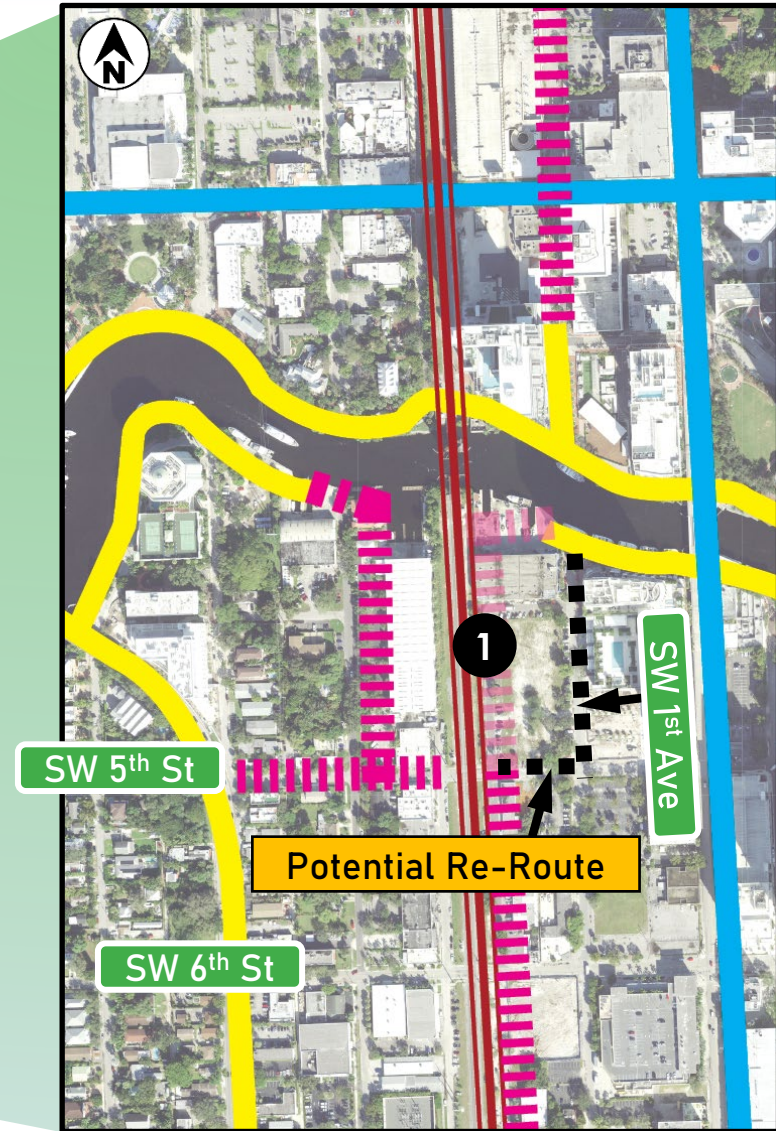
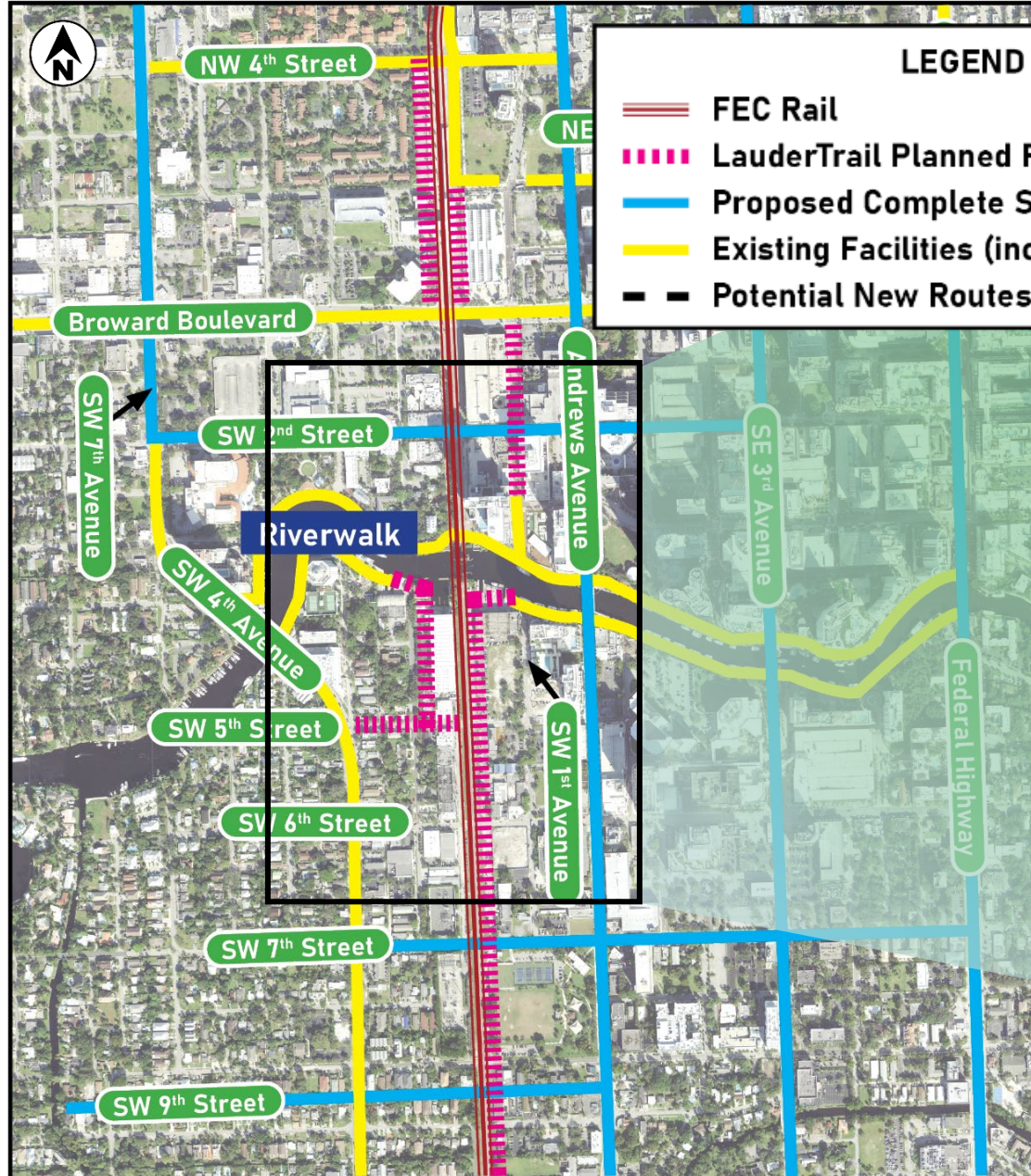


□ **Facility 7 (Planned Complete Streets)** – Needs to be relocated to SW 9th Street due to the SW 7th Street railroad crossing closure.



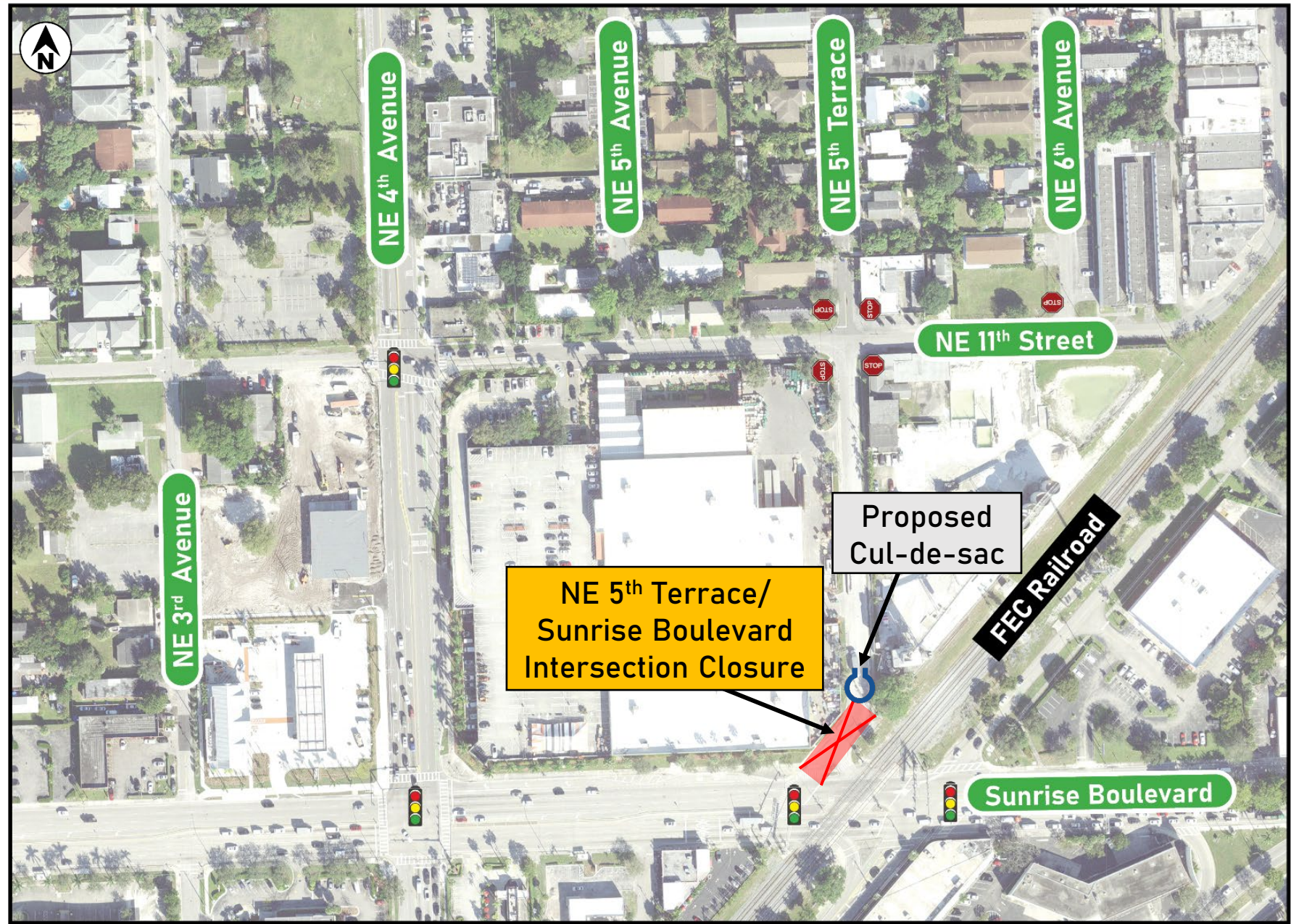




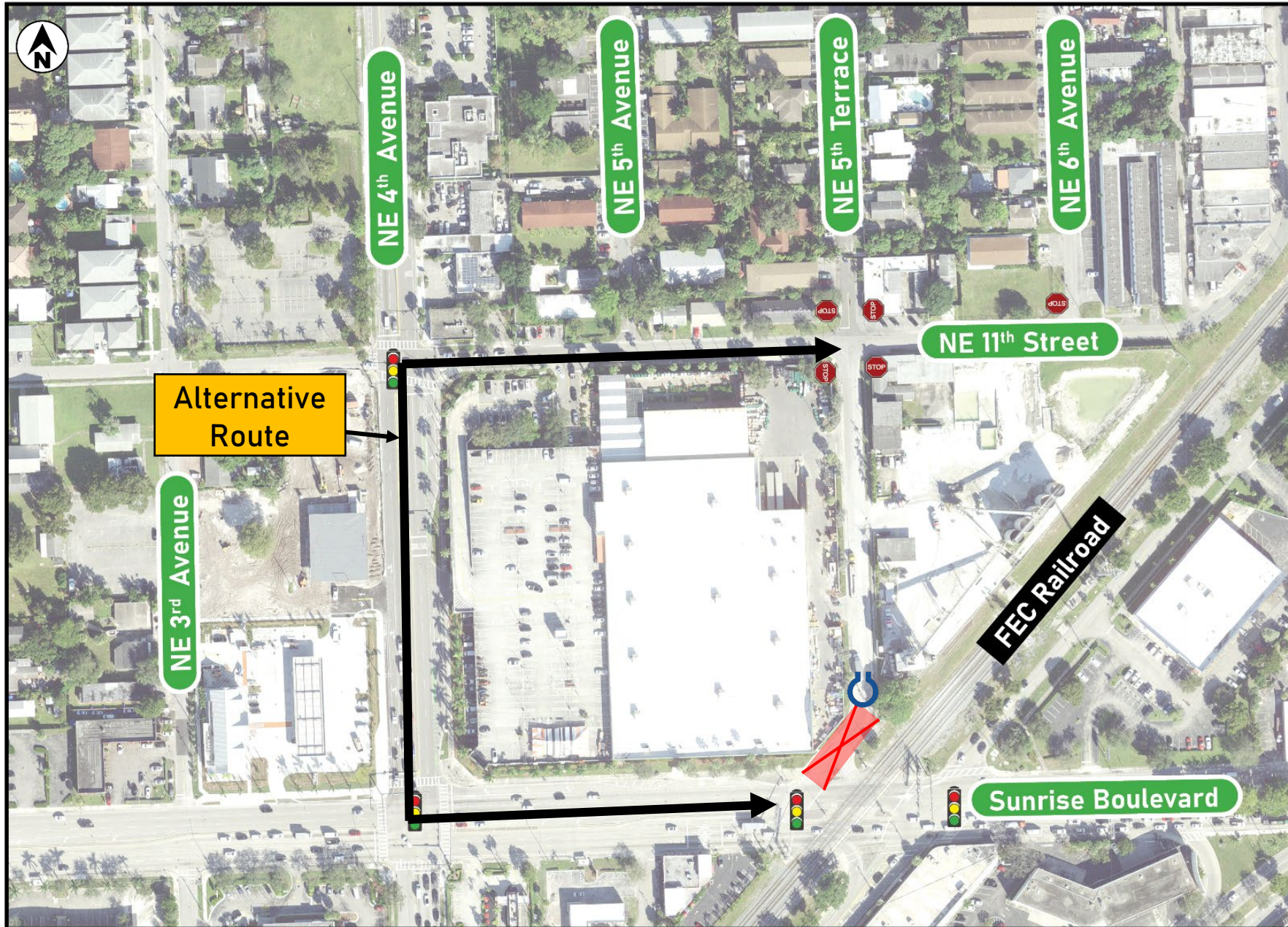


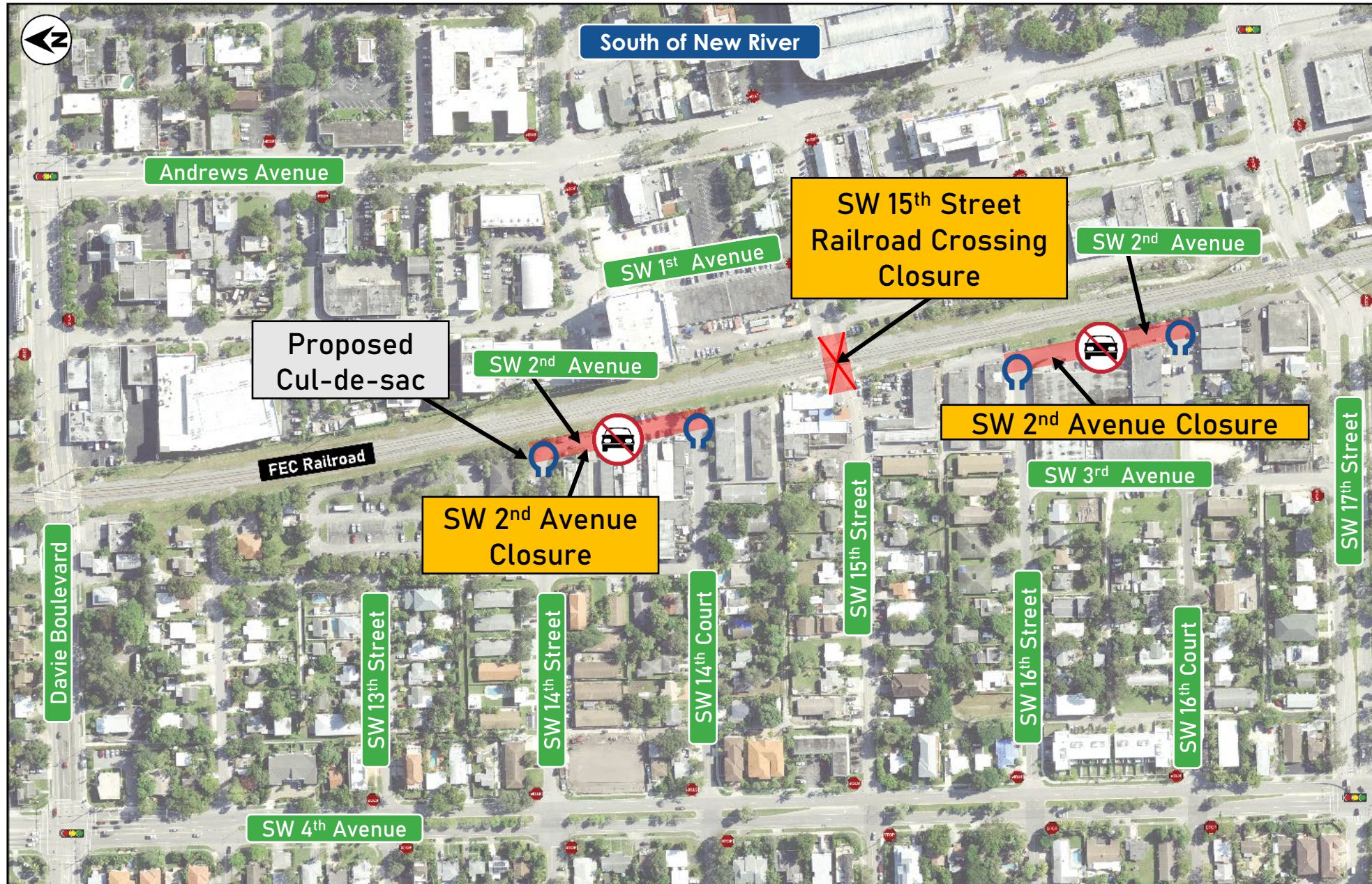
- **Facility 1 (Planned LauderTrail)** – Needs to be relocated to SW 1st Avenue between SW 5th St and the river due to railway shift to the east.

North of New River



North of New River







Alternative	Roadway Closures	Bicycle/Pedestrian Facility Re-Routes	Passenger At-Grade Railroad Crossings
Low-Level	SW 5 th Street (Railroad Crossing)	#1 – Planned LauderTrail (to SW 1 st Avenue) #2a – Existing Trail (to NW 1 st Avenue) #8 – Planned LauderTrail (to SW 6 th Street)	11
Mid-Level	SW 7 th Street (Railroad Crossing) SW 2 nd Avenue (Between SW 10 th Street and SW 11 th Street)	#1 – Planned LauderTrail (to SW 1 st Avenue) #7 – Complete Street Project (to SW 9 th Street)	6
High-Level	SW 9 th Street (Railroad Crossing – Vehicle Height Limitation) SW 2 nd Avenue (Between SW 10 th Street and SW 11 th Street)	#1 – Planned LauderTrail (to SW 1 st Avenue)	4
Tunnel	SW 15 th Street (Railroad Crossing) SW 2 nd Avenue (Between SW 14 th Street and SW 14 th Court) (Between SW 16 th Street and SW 16 th Court) NE 5 th Terrace (Intersection)	SW 15 th Street (SW 17 th Street or Davie Blvd)	2

Total # of Passenger At-Grade Railroad Crossings (Today) = 13 Crossings
All 13 At-Grade Freight Train Crossings will remain in all alternatives

- ❑ **Ensure understanding of anticipated impacts and proposed solutions for each alternative**
- ❑ **Input and Feedback**
 - **Confirm details of impacts and proposed solutions are understood.**
 - **Provide feedback on road closures and proposed solutions and any new ideas or concerns for the team to consider (suggested or new).**
 - **Provide feedback of pedestrian impacts and suggested re-routes or new ideas to consider.**

