



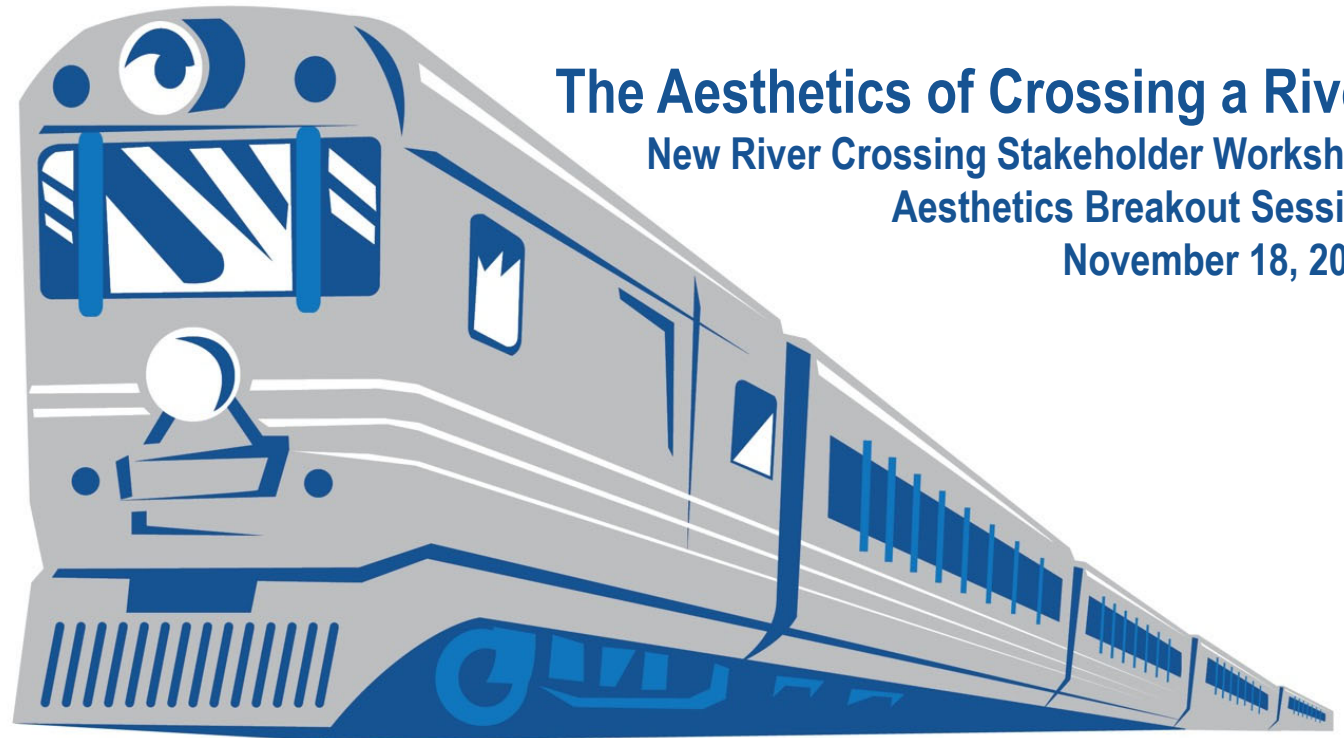
FLORIDA DEPARTMENT OF TRANSPORTATION (FDOT), DISTRICT 4
BROWARD COUNTY, FLORIDA • FPID: 417031-5-22-01

The Aesthetics of Crossing a River

New River Crossing Stakeholder Workshop

Aesthetics Breakout Session

November 18, 2021



Goals for Today's Session

- To inform stakeholders on the potential aesthetic treatments that can enhance the NRC Alternatives and obtain feedback regarding the treatments as well as applications to the different alternatives by providing information such as:
 - Various tools used for aesthetic treatments
 - Examples intended to enhance aesthetics and livability downtown
 - Provide information on how urban connectivity can be enhanced through design and streetscape
 - Facilitate discussion to gain community input on desires and concerns of the different NRC Alternatives

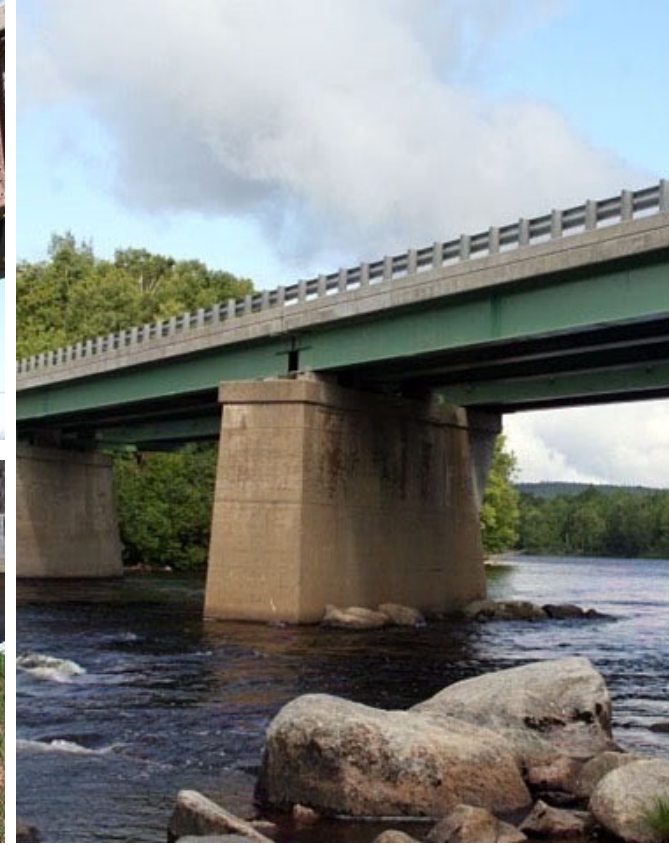
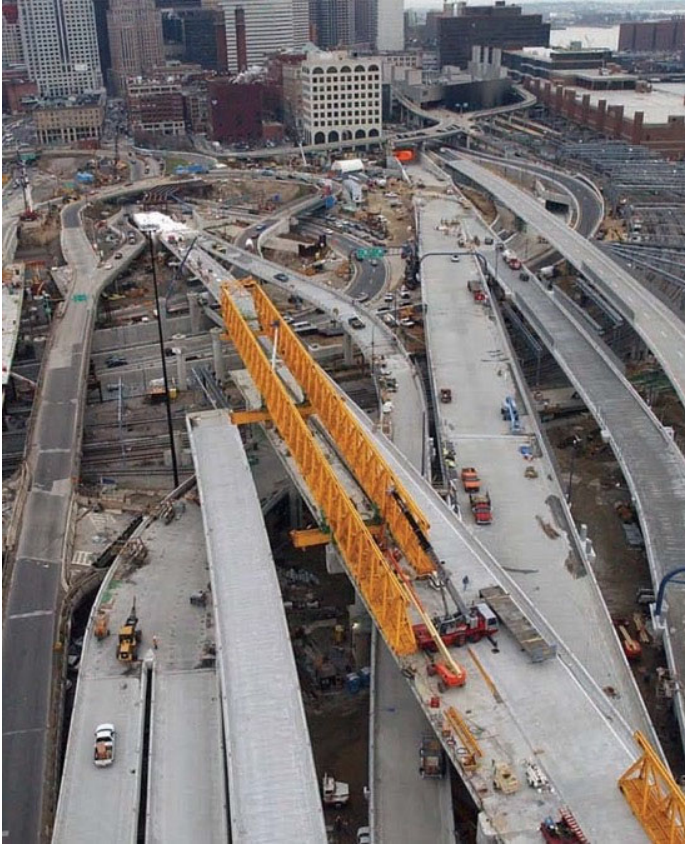
We Want to Hear From You

- What do you want to see from the BCR project?
- What are the characteristics of your neighborhood that make them special?
- How do we integrate art, culture and education in a way that is meaningful to you?
- What landscape and streetscape features are important?
- How do you feel about each alternative? From an Aesthetics standpoint do you see differences between alternatives?
- Are there preferred vantage/view points you would like to see?
- Are there specific community characteristics or art work you would like to see incorporated in the aesthetics of different alternatives?
- What additional feedback can you provide regarding the structure, wall and portal designs?

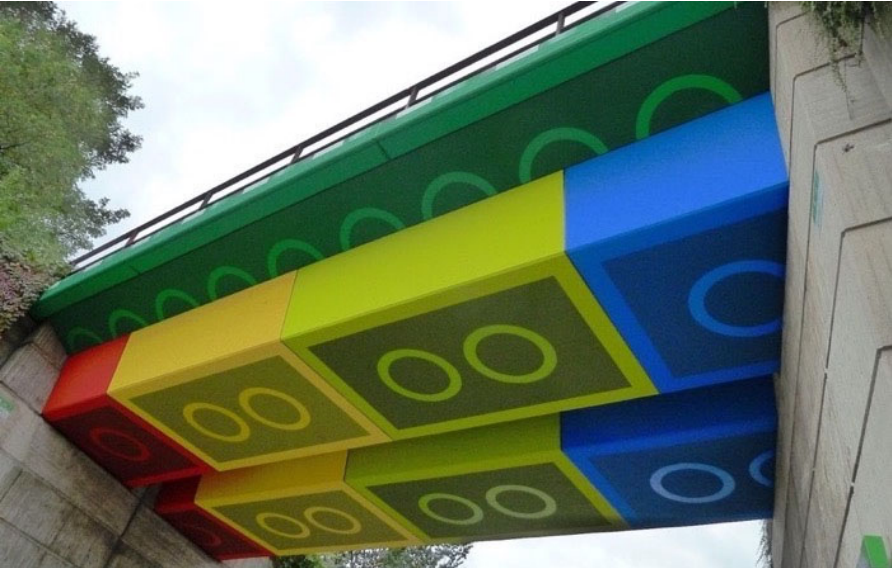
There Are Infrastructure Examples of What Not to Do



BROWARD COMMUTER RAIL (BCR)
PROJECT DEVELOPMENT & ENVIRONMENT (PD&E) STUDY



Examples of What Could Be Done



Examples of What Could Be Done



Train bridges eight stories or higher are not unusual

Examples of What Could Be Done

For decades trains have passed through the most prestigious downtowns in the world



Artistic Rendering Potential for Culture/Recreation



Opportunities to bring communities together

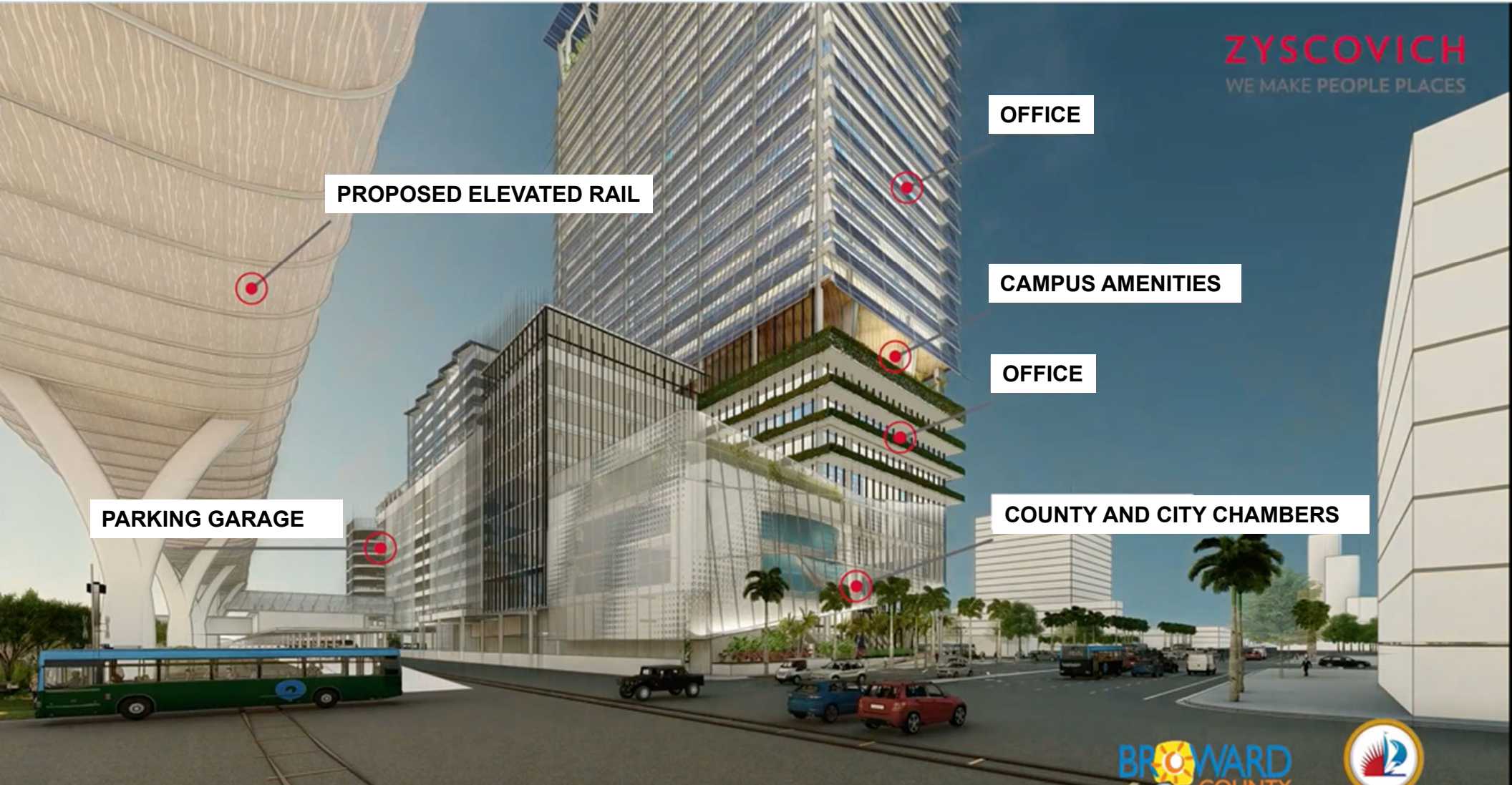


Adding to the cultural value of individual city districts

Artistic Rendering Joint Government Center Campus



BROWARD COMMUTER RAIL (BCR)
PROJECT DEVELOPMENT & ENVIRONMENT (PD&E) STUDY



PROPOSED ELEVATED RAIL

PARKING GARAGE

OFFICE

CAMPUS AMENITIES

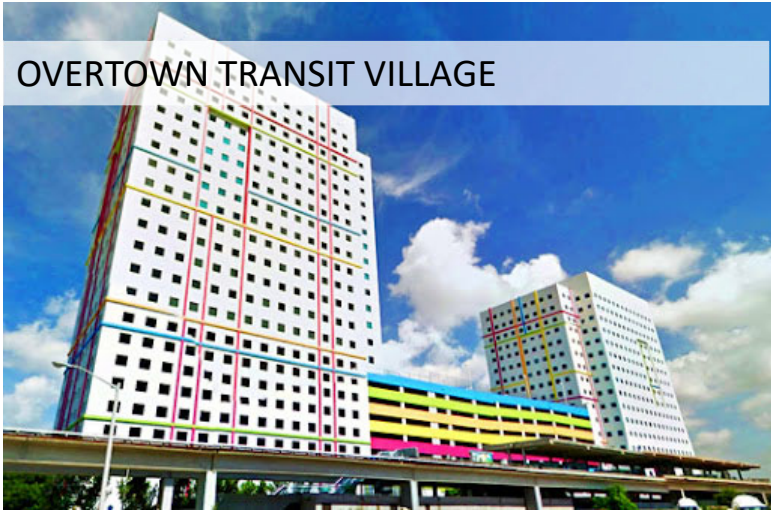
OFFICE

COUNTY AND CITY CHAMBERS

ZYSCOVICH
WE MAKE PEOPLE PLACES

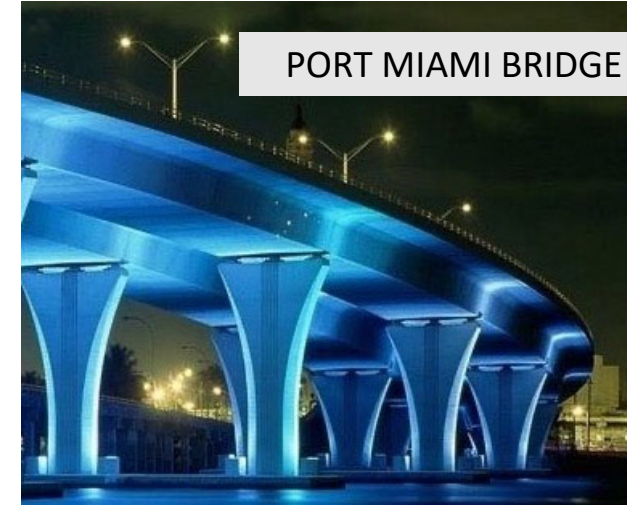


Local Joint Development Examples



Reinforcing character and context with bridge design elements

1. Lighting
2. Artistic treatments
3. Column design and bridge railings
4. Closed bottom boxes
5. Scale and proportion



Aesthetics Toolbox: Landscape and Hardscape

Enhance spaces around the bridge or tunnel portals with landscape and hardscape elements

1. Pavers, bollards and seating, and overhead lighting
2. Landscaped retaining walls
3. Palette of trees and bushes



lasolas Conceptual Design Plan (DRAFT)

Page 46

The following provides for the recommended plant palette for the area.

Large Trees:



Quercus virginiana
Live Oak®



Bursera simaruba
Gumbo Limbo®



Piscidia piscipula
Jamaican Dogwood

Flowering Trees / Accents:



Handroanthus impetiginosus
Purple Trumpet



Handroanthus heptaphyllus
Pink Trumpet

Medium Trees:



Eugenia foetida
Spanish Stopper®



Myrcanthes fragrans
Simpson Stopper®



Bulnesia arborea
Verawood



Handroanthus chrysotricha
Yellow Trumpet



Lagerstroemia speciosa
Queen Crepe Myrtle

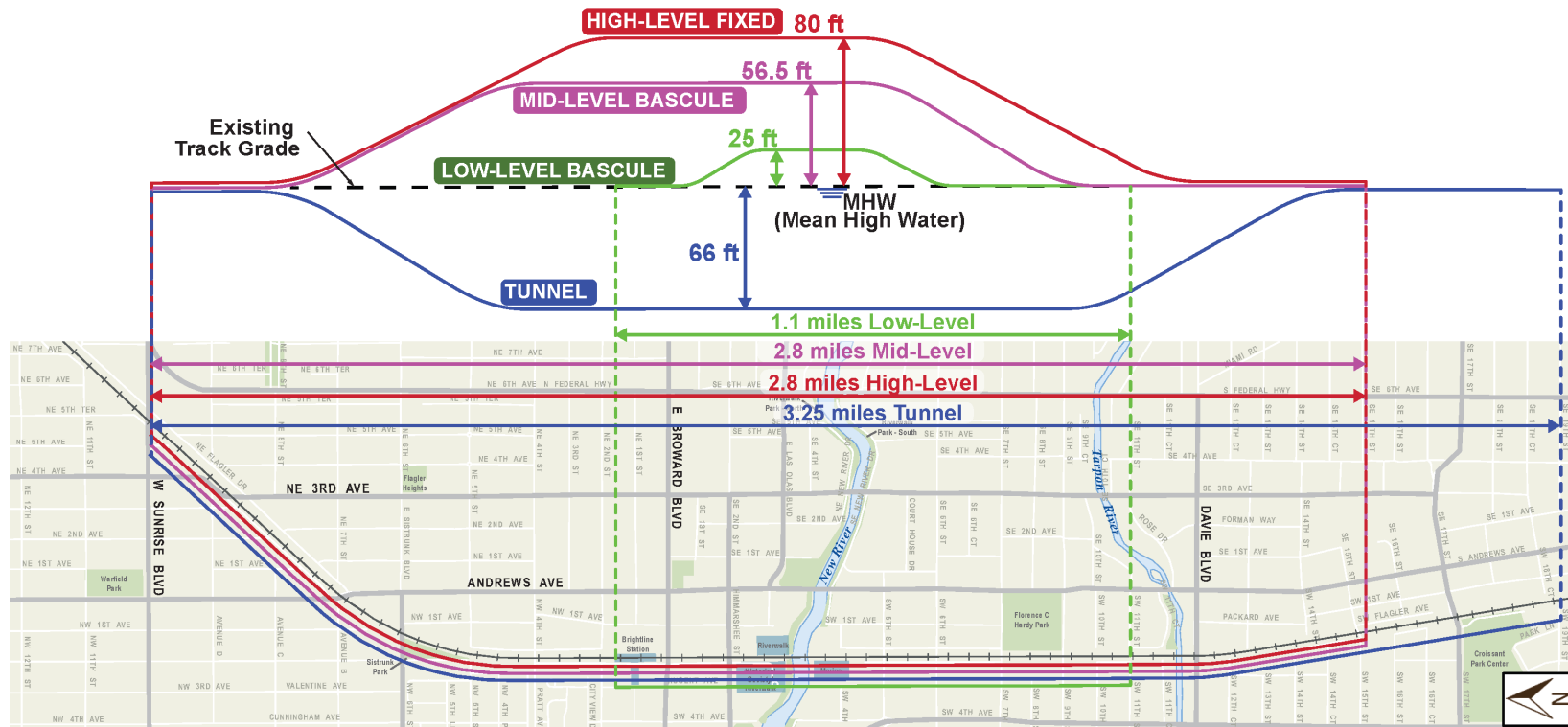
Placemaking with landscaping and aesthetic treatment for multi-modal connections:

1. Crosswalks
2. Landscaping and hardscape
3. Laudertrail connections proposed by City



Alternatives Overview

- Low-level Alternative - Bascule Bridge (25 ft. clearance above water surface)
- Mid-level Alternative - Bascule Bridge (56.5 ft. clearance above water surface)
- High-level Alternative - Fixed Bridge (80 ft. clearance above water surface)
- Tunnel (66 ft. clearance below water surface)



Examples of Bridges Designed With the Community



LOW LEVEL
BRIDGE



MID LEVEL
BRIDGE



CLOSED BOTTOM



HIGH LEVEL
BRIDGE

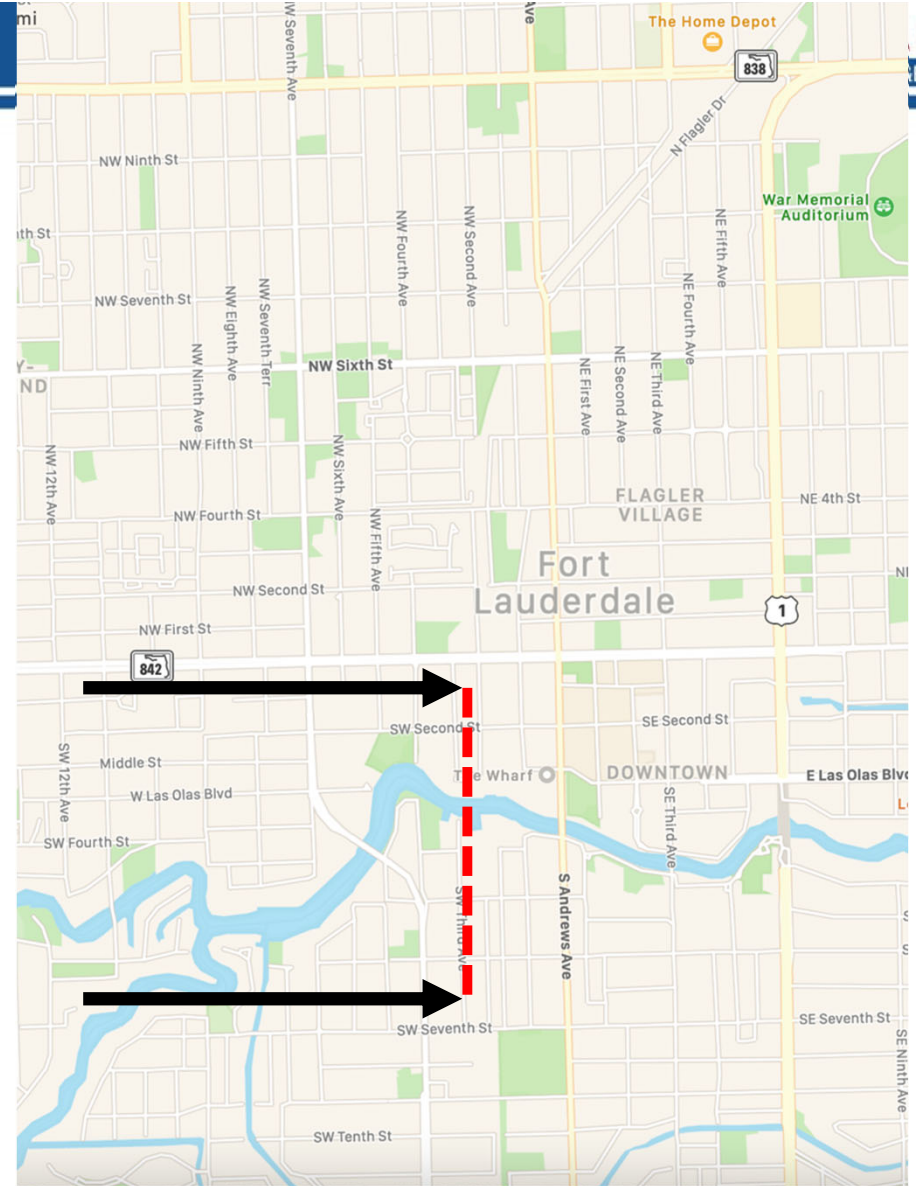
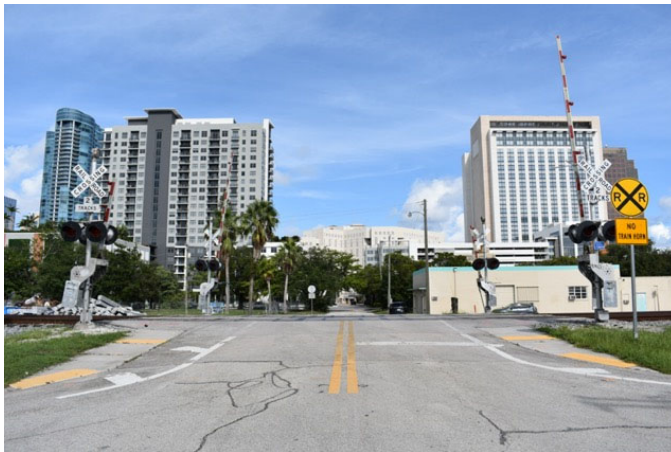
Low Level Bridge Alternative

Locations where train meets street level

North NW 2nd Avenue from north of Himmarshee to south of Broward Boulevard



South of SW 5th Street to north of SW 6th Street



Slope Down to Street: Low Level Alternative



SW 2ND AVENUE LOOKING SOUTH

Design features activate spaces and protect neighborhood character and context:

- Pavers can help convert one-way street into shared street or temporary plaza
- Landscaping can soften structures by adding nature in contrast to hardscape
- Public art on retaining wall helps create sense of place and can correspond with neighborhoods and history as well as other local art
- Lighting can be multi-colored and provide enhanced night-time aesthetics



ARTISTIC RENDERING: SW 2ND AVENUE LOOKING SOUTH TOWARDS HIMMARSHEE

High Level Bridge Alternative

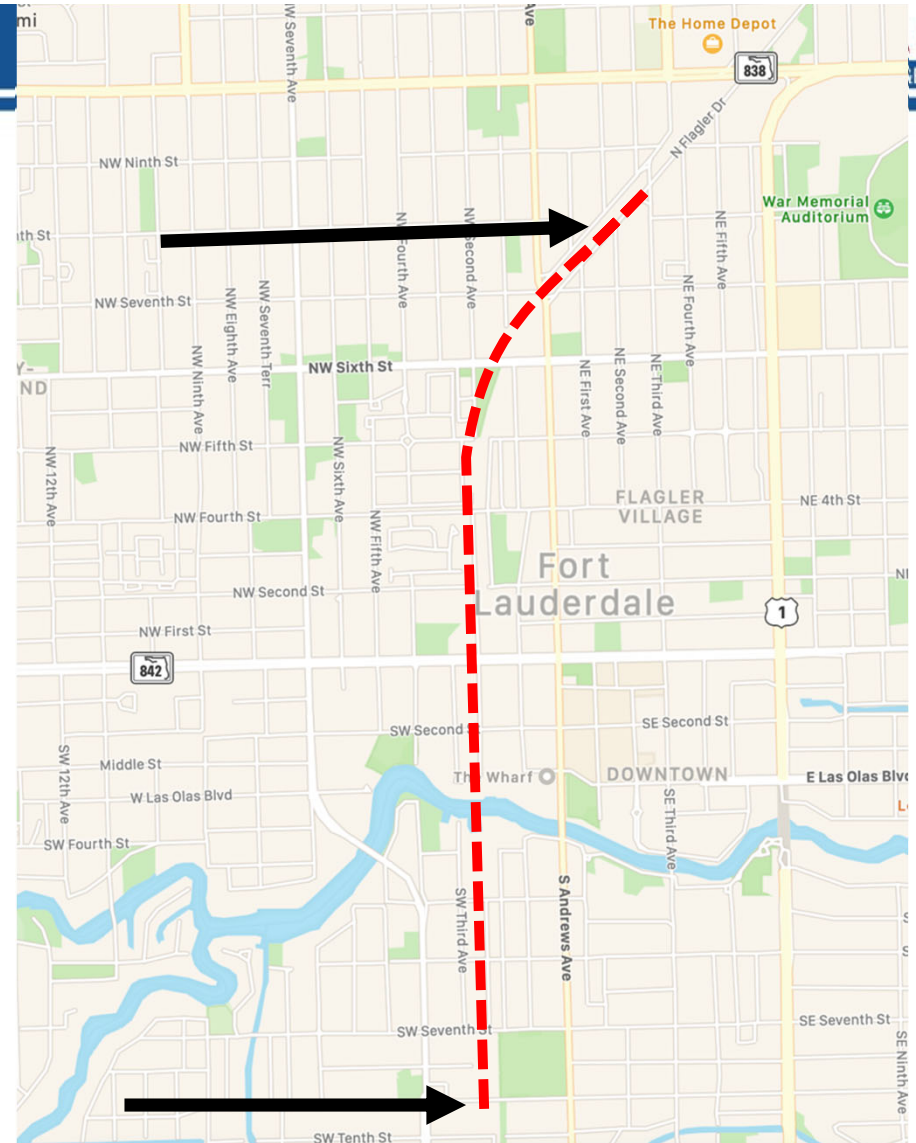
Locations where train meets street level



North of N. Andrews Avenue to NE 3rd Avenue



South of SW 9th Street to north of Davie Blvd.



Slope Down to Street Level: High Level Alternative



SW 9TH STREET LOOKING WEST

Design enhances connectivity and is consistent with neighborhood scale:

- Steel bridge and sample artistic columns
- Access to Laudertrail is easy to see, safe and attractive
- Landscape and crosswalks help to define spaces for trail users



ARTISTIC RENDERING AT SW 9TH STREET SOUTH OF RIVER LOOKING WEST

Mid Level Bridge Alternative

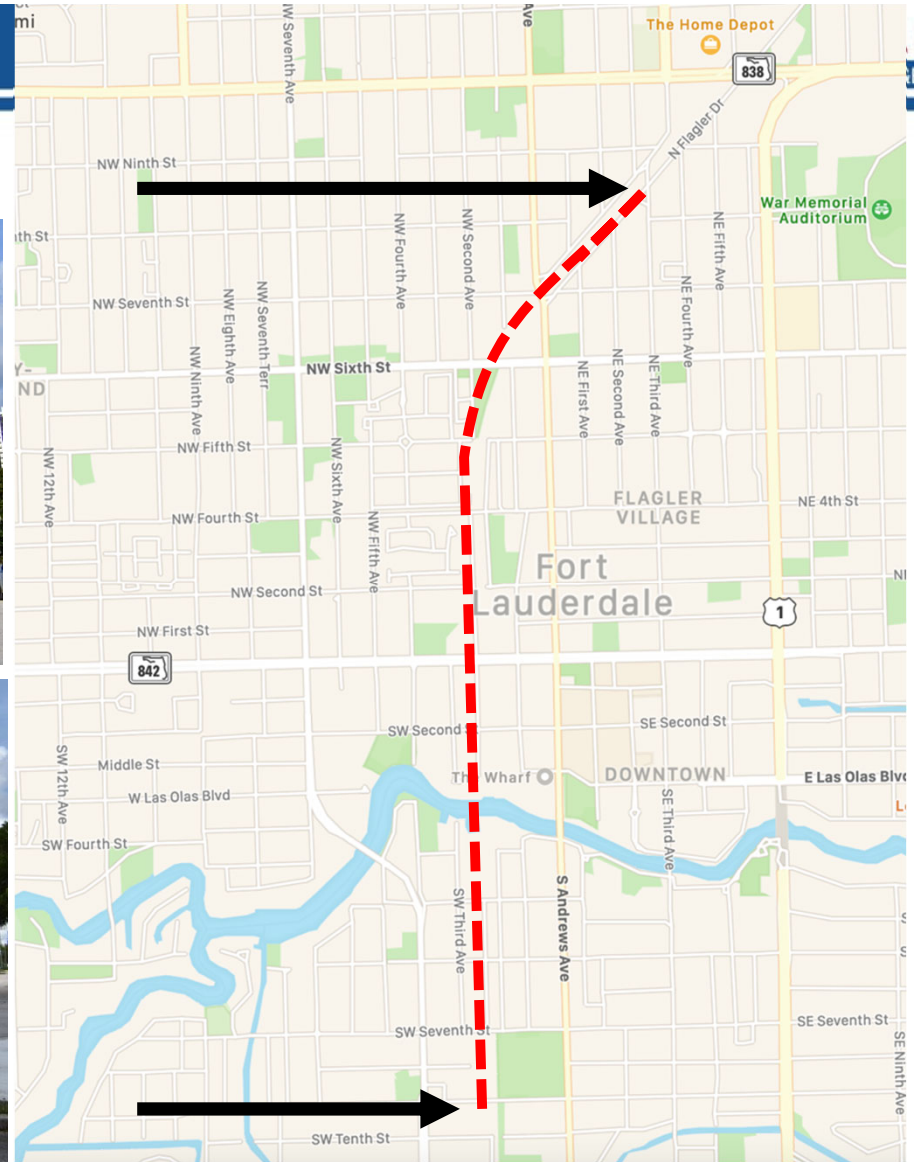
Locations where train meets street level



North of N. Andrews Avenue to NE 3rd Avenue



South from SW 9th Street to north of SW 7th Street



High Level Bridge Alternative

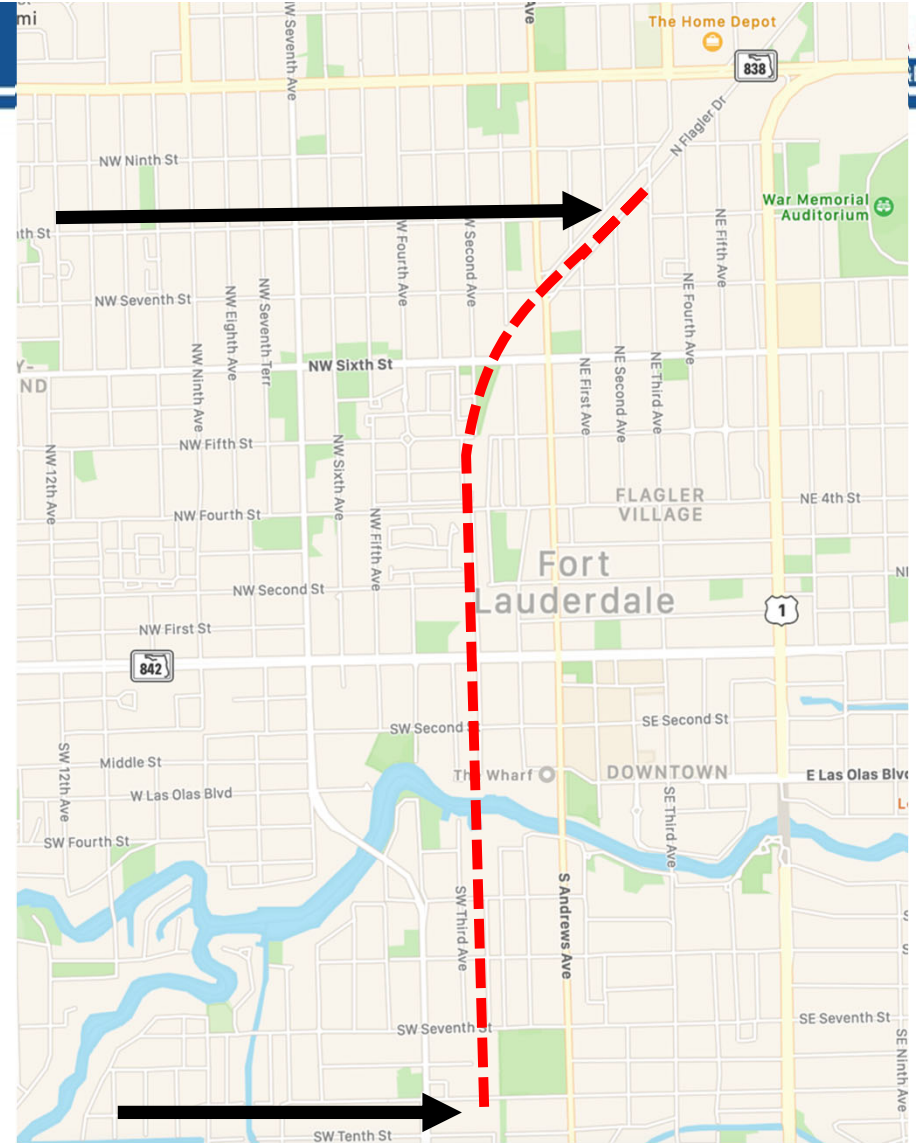
Locations where train meets street level



North of N. Andrews Ave.
to north of NE 3rd Ave.



South of SW 9th Street
to north of Davie Blvd.



Typical Street Crossing: Mid/High Level Alternative



HIMMARSHEE/ SW 2ND AVE LOOKING SOUTH

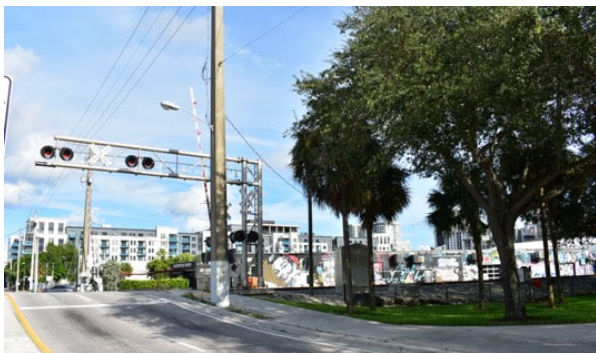
Infrastructure introduced as design feature with additional streetscape to preserve openness and access:

- Attractive column design and sound barrier
- Aesthetic closed-bottom box
- Bollards separate sidewalk from roadway in an attractive way
- Pavers add color and texture and visual separation
- Crosswalks delineate safe area for crossing



ARTISTIC RENDERING OF INTERSECTION OF HIMMARSHEE AND SW 2ND AVE LOOKING SOUTH

Typical Street Crossing: Mid/High Level Alternative



SISTRUNK BOULEVARD LOOKING EAST

Design preserves openness and accessibility and neighborhood character of FAT Village:

- Artistic columns and decorative railing
- Column design allows for narrower columns to maintain visibility
- Pavers and landscaping soften the edges of the street



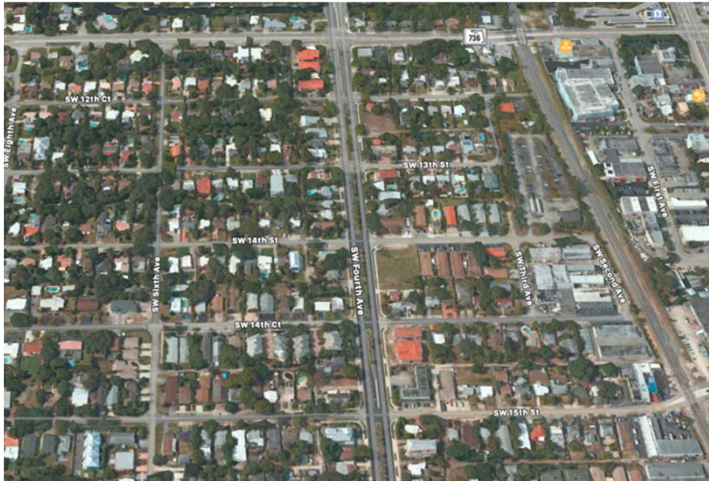
ARTISTIC RENDERING SISTRUNK BOULEVARD LOOKING EAST

Underground Tunnel Alternative

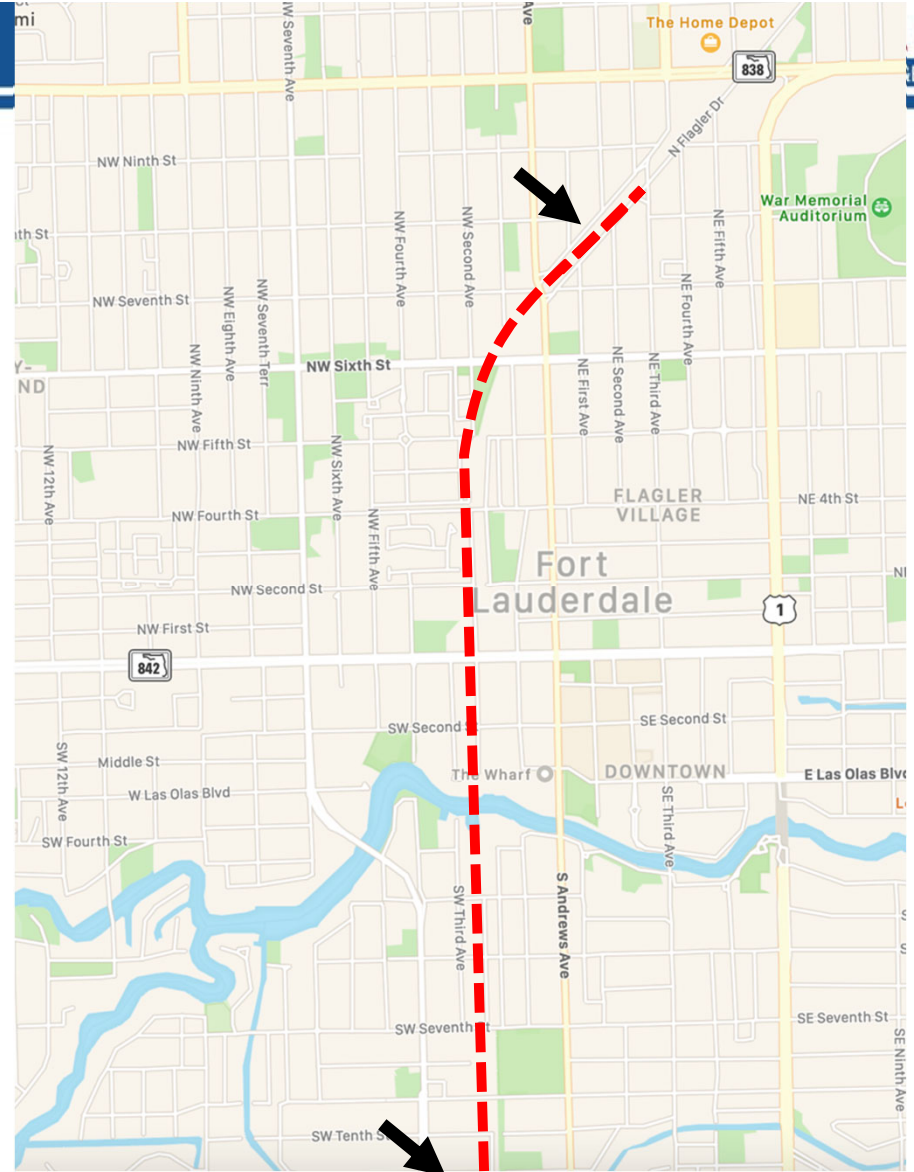
Locations where train meets street level



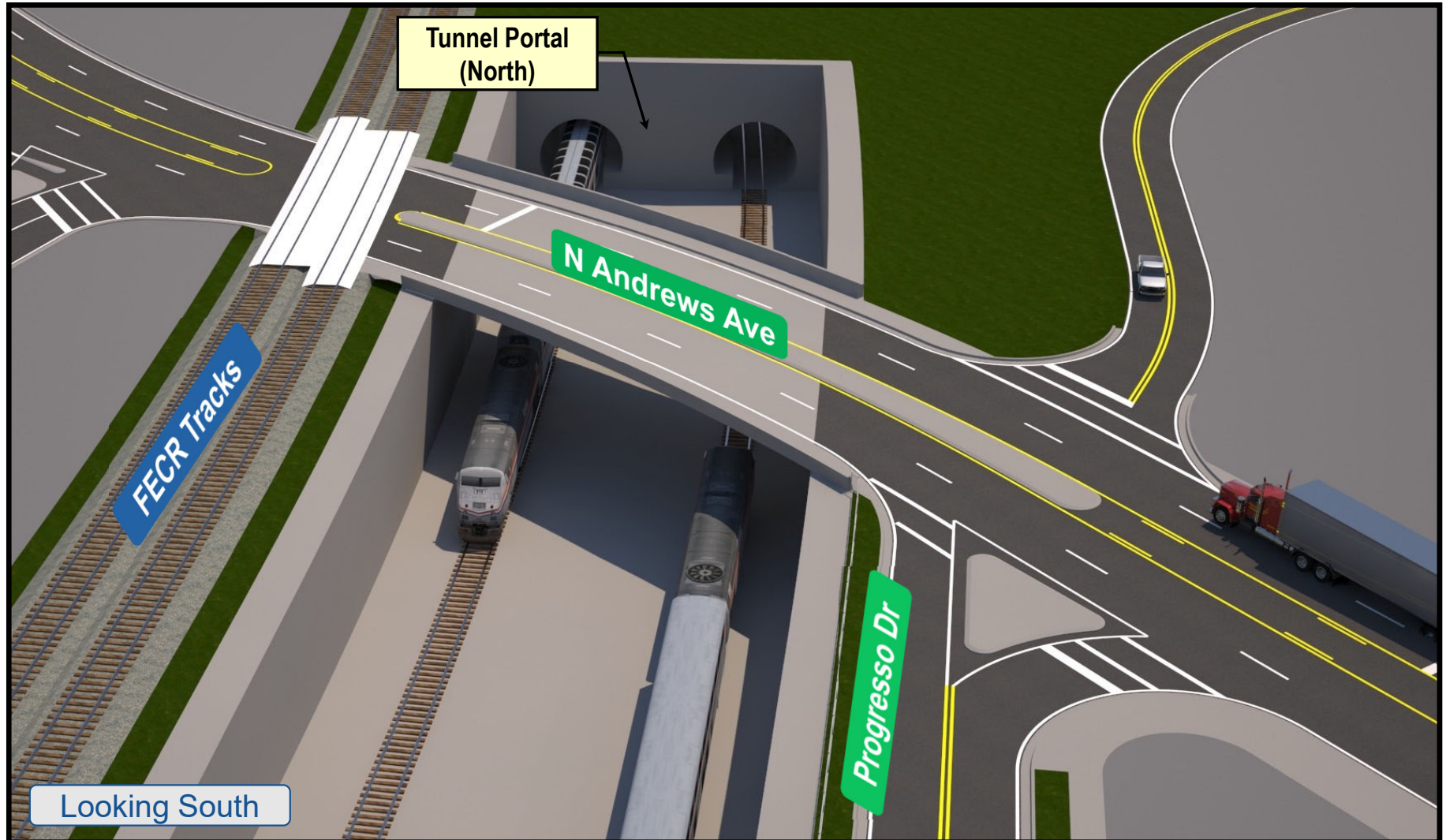
North of N. Andrews Ave. to north of NE 3rd Ave.



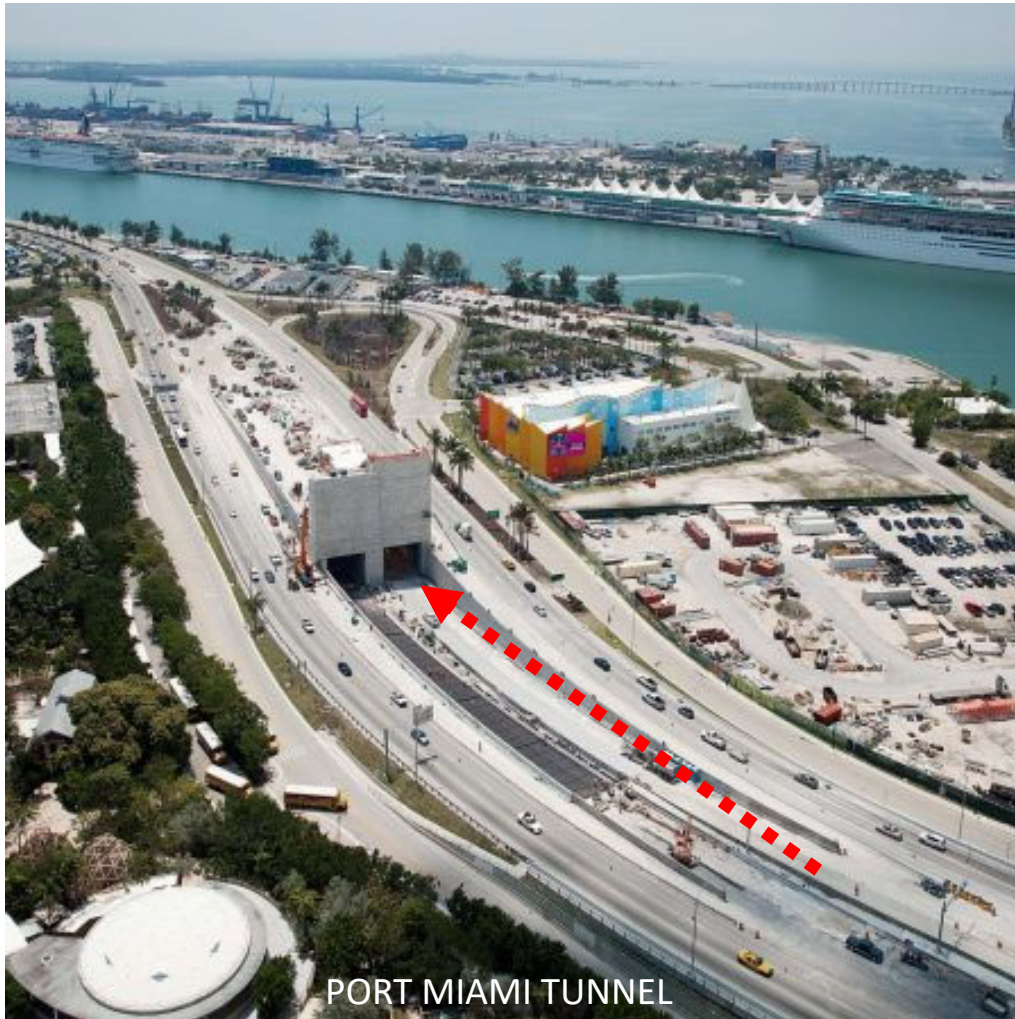
South of SW 15th Street to north of Davie Boulevard



Underground Tunnel Portal



Tunnel Alternative

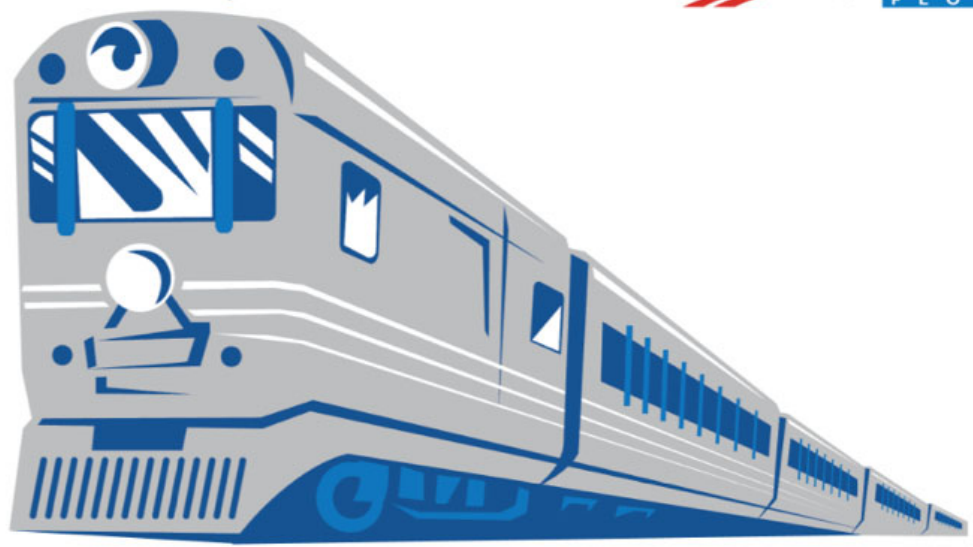




BROWARD COMMUTER RAIL (BCR)

PROJECT DEVELOPMENT & ENVIRONMENT (PD&E) STUDY

FLORIDA DEPARTMENT OF TRANSPORTATION (FDOT), DISTRICT 4
BROWARD COUNTY, FLORIDA • FPID: 417031-5-22-01



What is Most Important to You?

- What do you want to see from the BCR project?
- What are the characteristics of your neighborhood that make them special?
- How do we integrate art, culture and education in a way that is meaningful to you?
- What landscape and streetscape features are important?
- How do you feel about each alternative? From an Aesthetics standpoint do you see differences between alternatives?
- Are there preferred vantage/view points you would like to see?
- Are there specific community characteristics or art work you would like to see incorporated in the aesthetics of different alternatives?
- What additional feedback can you provide regarding the structure, wall and portal designs?

Future opportunities to provide comments will be available as the project advances.

THANK YOU FOR PARTICIPATING THIS EVENING!