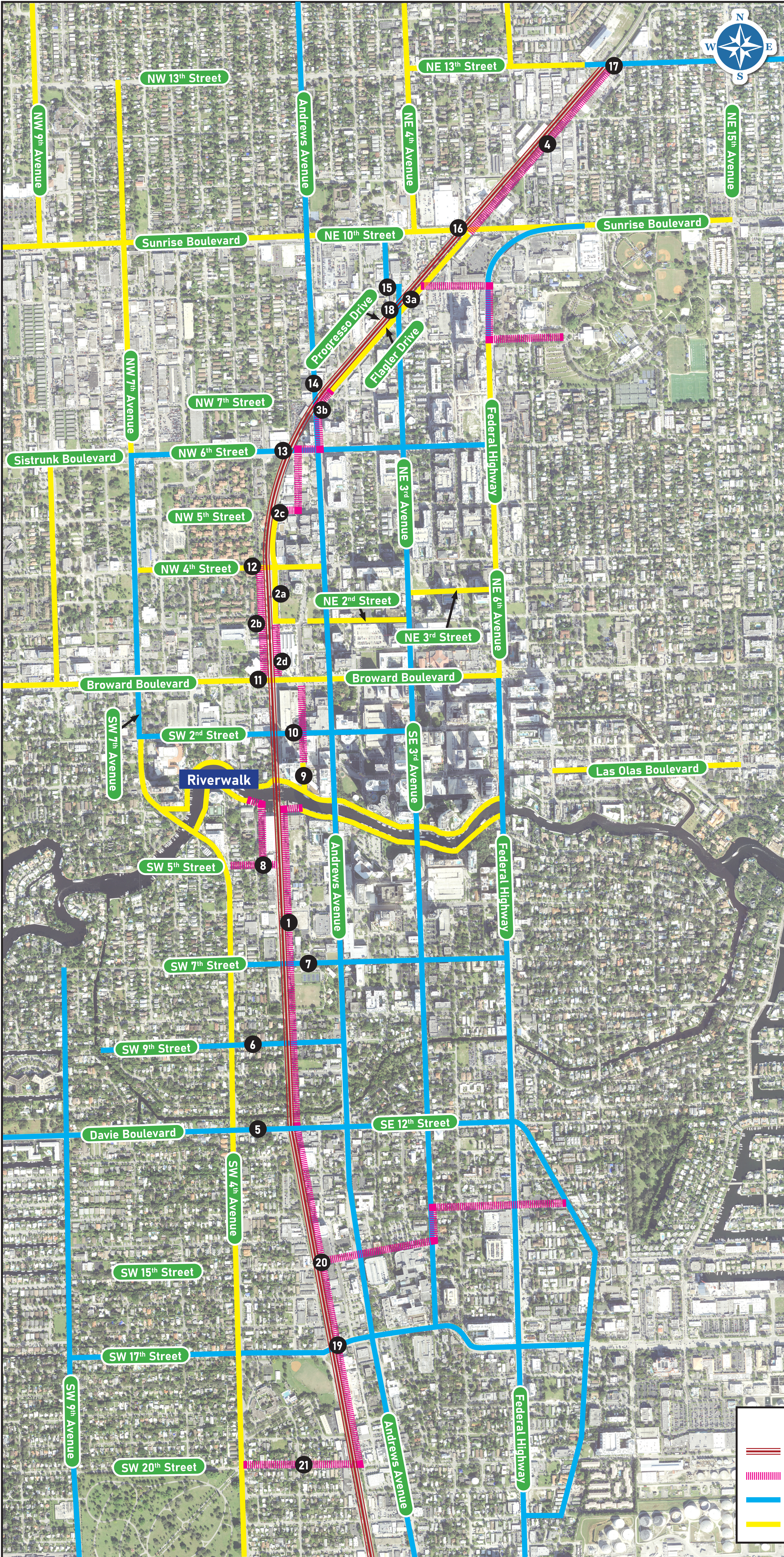


PEDESTRIAN/BICYCLE FACILITIES ADJACENT/CROSSING THE FEC RIGHT OF WAY BETWEEN SW 20TH STREET & NE 13TH STREET



Adjacent to Tracks:

- 1 From Davie Boulevard to New River
Planned: Multi-Use Trail on east side of tracks
- 2 From Broward Boulevard to NW 5th Street
 - 2a Existing: Shared-Use Path From NW 2nd Street to Appx. 50 feet south of NW 5th Street
 - 2b Planned: From Broward Boulevard to NW 4th Street (west of tracks), on NW 2nd Avenue
 - 2c Planned: From NW 5th Street to end of existing pathway
 - 2d Planned: From Broward Boulevard to NE 2nd Street on NW Flagler Street (east of tracks)
- 3 From Andrews Avenue to NE 10th Street
 - 3a Existing: Path from NE 7th Avenue to NE 10th Avenue, along north side of Flagler Drive (east of tracks)
 - 3b Planned: Path between NW 6th Street and north of NE 7th Street, along Flagler Drive (east of tracks)
- 4 From NE 10th Street to NE 13th Street
Planned: Path on north side of Flagler Drive (east of Tracks)

Crossings at FEC Tracks:

- 5 Davie Boulevard: Complete Streets Planned east and west of FEC tracks
- 6 SW 9th Street: Residential Complete Streets Planned east and west of FEC tracks
- 7 SW 7th Street: Residential Complete Streets Planned east and west of FEC tracks
- 8 SW 5th Street: Planned facilities west of track, to connect to north-south route planned parallel to FEC tracks
- 9 Riverwalk: Shared-Use path, east and east of FEC tracks
- 10 SW 2nd Street: Complete Streets Planned east and west of FEC tracks
- 11 Broward Boulevard: Existing on street bicycle facilities (bicycle lanes) east and west of FEC tracks
- 12 NW 4th Street: Existing on street bicycle facilities east and west of FEC tracks
- 13 NW 6th Street (Sistrunk Boulevard): Complete Streets Planned east and west of FEC tracks; overlaps with planned LauderTrail segment east of FEC tracks
- 14 Andrews Avenue: Complete Streets Planned north and south of FEC tracks
- 15 NE 3rd Avenue: Complete Streets Planned north and south of FEC tracks
- 16 Sunrise Boulevard/NE 10th Street: Existing on street bicycle facilities east and west of FEC tracks
- 17 NE 13th Street: Complete Streets Planned east and west of FEC tracks, to connect to existing facilities to the west of the tracks
- 18 Progresso Drive: Pedestrian and Vehicle Safety Enhancement Project
- 19 SE 17th Street: Planned Complete Streets east and west of FEC tracks
- 20 SE 15th Avenue: Planned Laudertrail from east of FEC tracks
- 21 SW 20th Street: Planned Laudertrail from west of the FEC tracks

LEGEND

- FEC Rail (Between SW 20th Street & NE 13th Street)
- LauderTrail Planned Routes
- Proposed Complete Streets
- Existing Facilities (including LauderTrail)