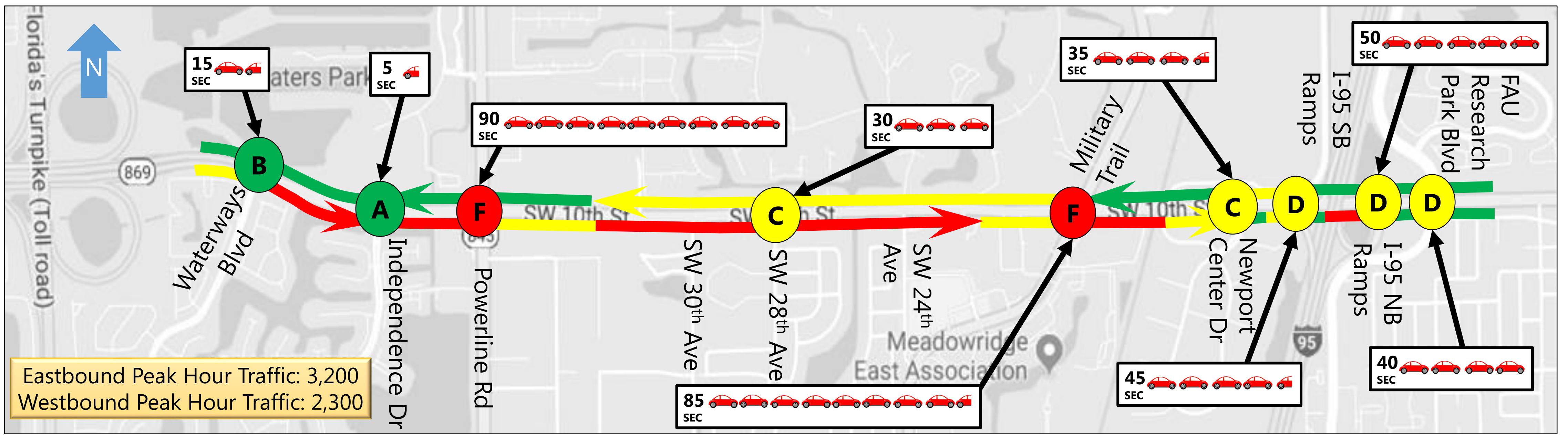
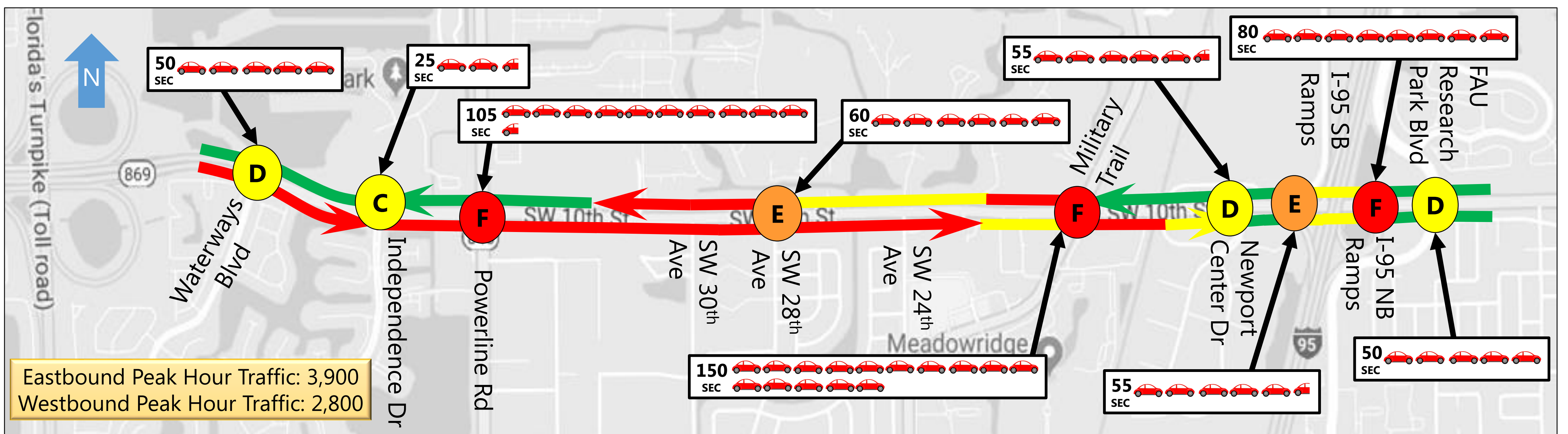


Morning Peak Hour Traffic Operations

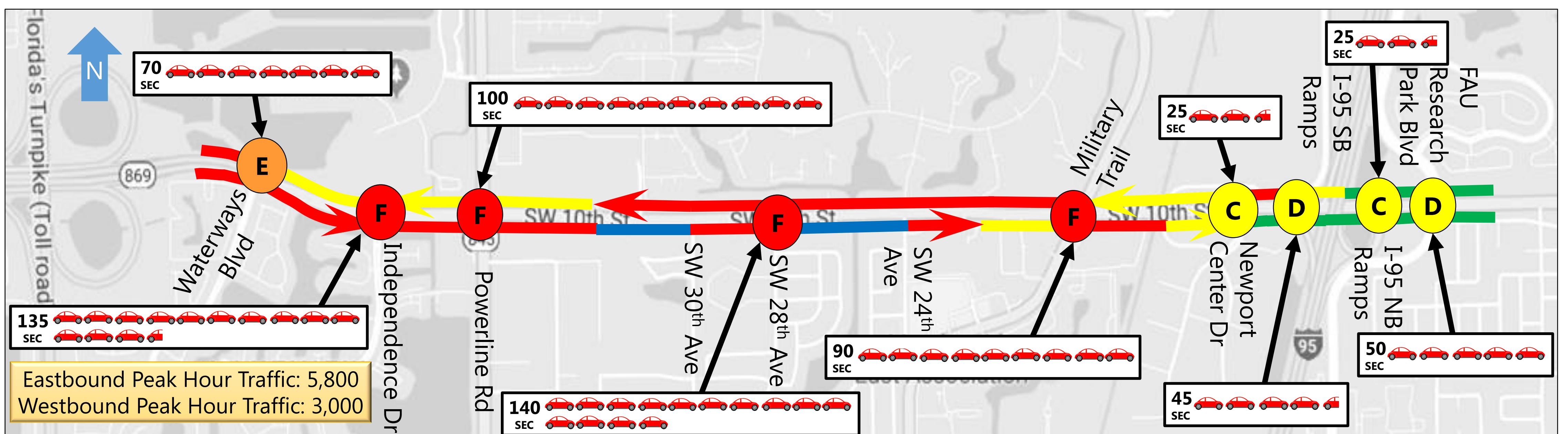
2016 Conditions



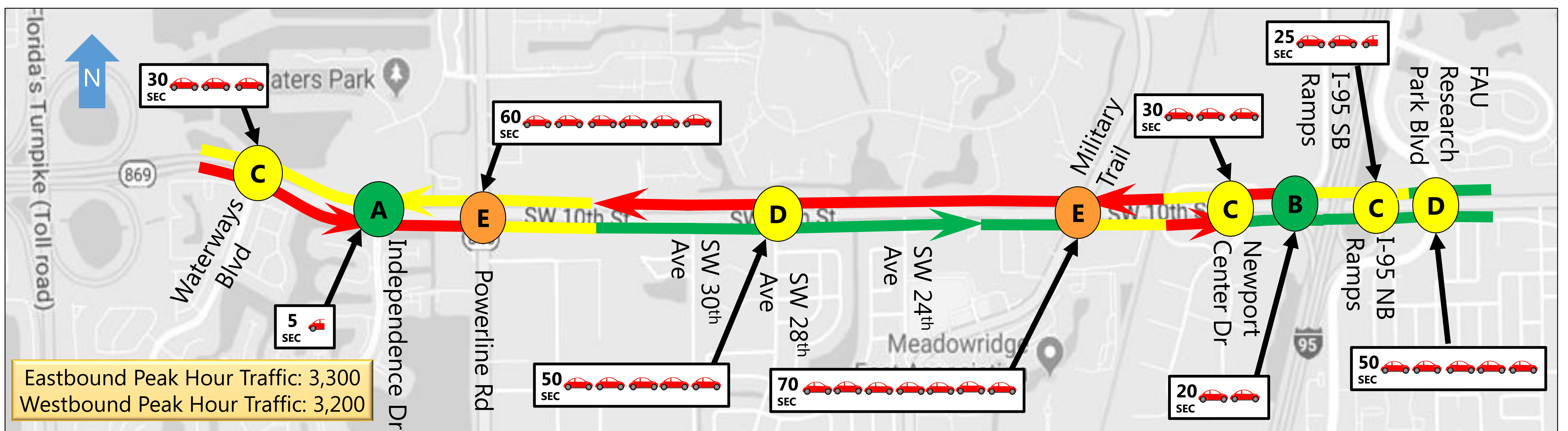
2040 No Build Conditions (No Interchanges and No SW 10th Street Improvements)



2040 with Interchange Improvements Only



2040 with Interchanges and SW 10th Street Improvements



LEGEND

Roadway Volume to Capacity (V/C) Ratio

| | |
|--|--------|
| (little to no delay, free flow speeds) V/C ≤ 0.74 | Green |
| V/C 0.75-0.99 | Yellow |
| V/C 1.00-1.99 | Red |
| V/C ≥ 2.00 (long delays, slow speeds) | Blue |

Signalized Intersection Level of Service

| | |
|-------------------------------------|------------|
| 0-20 seconds of delay per vehicle | A B 15 SEC |
| >20-55 seconds of delay per vehicle | C D 30 SEC |
| >55 seconds of delay per vehicle | E F 85 SEC |