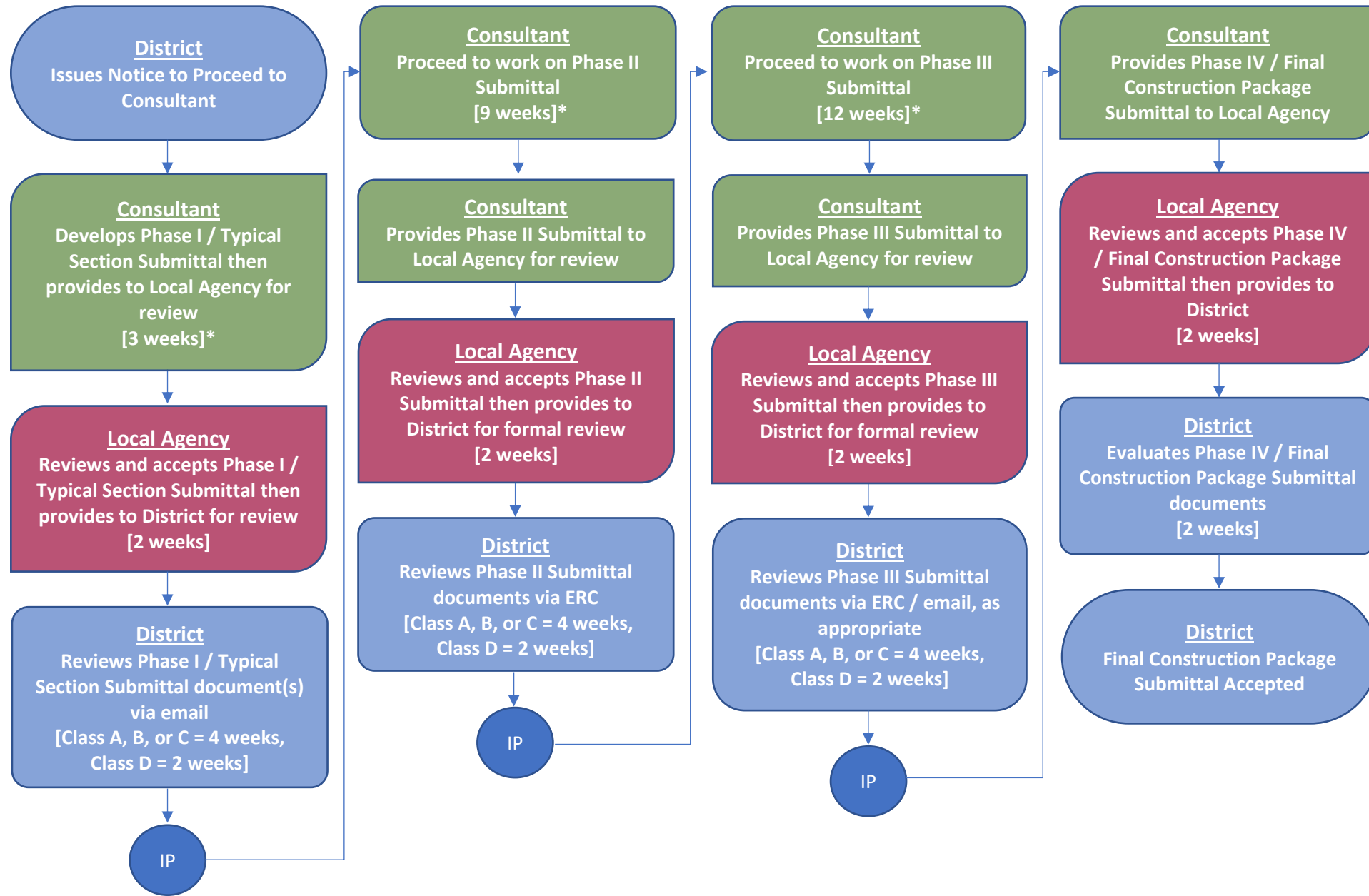


District 5 LAP Continuing Services Contract Design Task Work Order

Administration and Management



Legend:

CEI = Construction Engineering and Inspection
 Class A = On the State or National Highway Systems
 Class B = Off the State and National Highway Systems with an estimated construction value of \$10 Million or greater
 Class C = Off the State and National Highway Systems and includes structural components (i.e. a vehicular bridge, a pedestrian bridge over a roadway, box culvert meeting the definition of a bridge as stated in 23 CFR 305)
 Class D = Off the State and National Highway Systems, may include structural components (i.e. pedestrian or shared use path bridges not over a roadway, box culverts that do not meet the definition of a bridge as stated in 23 CFR 305)
 ERC = Electronic Review Comments System
 IP = Iterative Process
 LAP = Local Agency Program
 * = Based on LAP Template Schedule - timeframe may be expanded or reduced based on complexity of the project.

Submittals:

Phase I / Typical Section

- Plans / Typical Section
- Preliminary Cost Estimate (if available)

Phase II

- Plans
- Construction Cost Estimate

Phase III

- Plans
- Construction Cost Estimate
- Construction Duration Calculation
- CEI Man-hour Cost Estimate
- Permits Clear Memo
- Copy of Permits (if applicable)
- Railroad Clear Memo
- Utilities Clear Memo
- Utility Work Schedules (if applicable)
- Right-of-Way Certification Form
- Draft Bid Documents
- LAP Construction Checklist Form

Phase IV / Final Construction Package

- Final Plans
- Final Estimate
- Final Bid Documents
- Final LAP Construction Checklist Form

Note: Environmental Certification and Right-of-Way Certification must be obtained prior to Phase IV / Final Construction Package Submittal acceptance.

