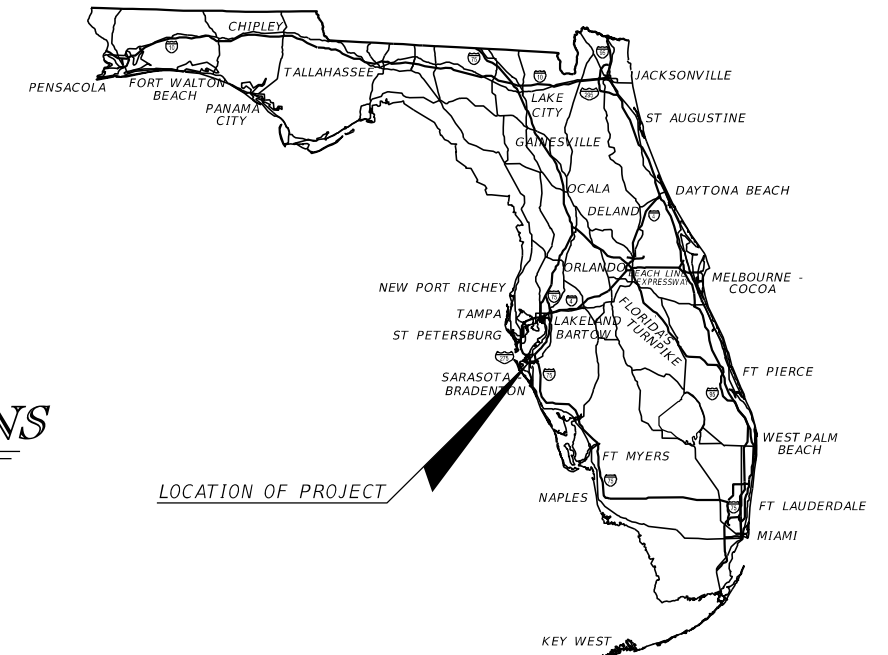


STATE OF FLORIDA  
 DEPARTMENT OF TRANSPORTATION  
**FINAL AS-BUILT PLANS**  
~~CONTRACT PLANS~~

FINANCIAL PROJECT ID 436682-1-52-01  
 MANATEE COUNTY (13020)  
 STATE ROAD NO. 43  
 FROM 6TH AVENUE DR. W TO 2ND AVENUE W



INDEX OF SIGNING AND PAVEMENT MARKING PLANS

SHEET NO.	SHEET DESCRIPTION
S-1	KEY SHEET
S-2	TABULATION OF QUANTITIES
S-3	PAVEMENT MARKING LAYOUT CONTROL
S-4 - S-8	SIGNING AND PAVEMENT MARKING PLAN SHEETS

**SIGNING AND PAVEMENT MARKING PLANS**

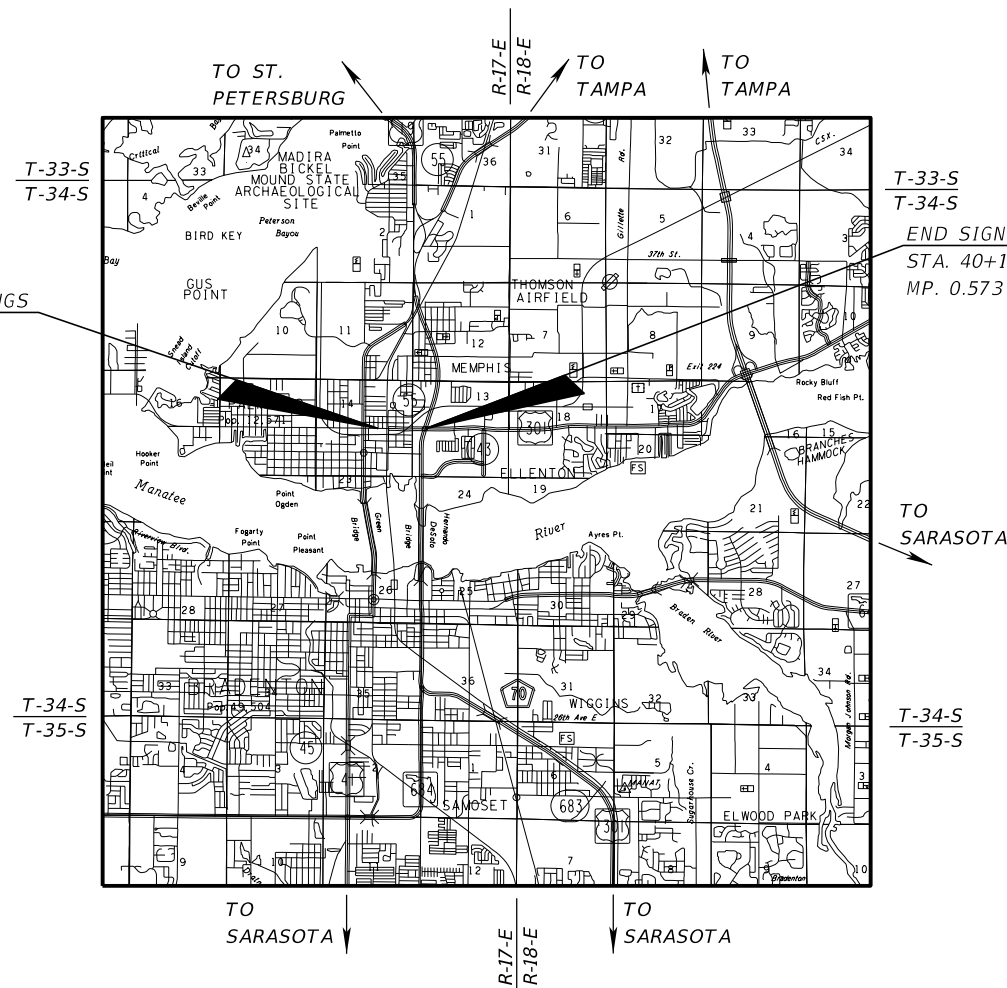
**COMPONENT INDEX**

KEY SHEET	1
SIGNATURE SHEET	2A

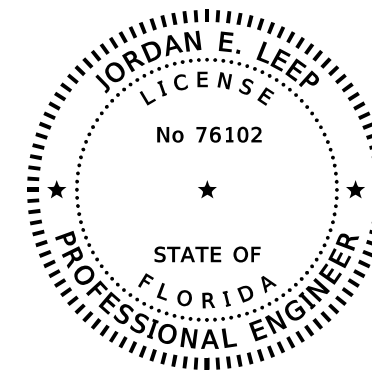
BEGIN SIGNING AND PAVEMENT MARKINGS  
 STA. 55+61.00  
 MP. 0.108

**REVISIONS**

S-2	SUMMARY OF QUANTITIES
-----	-----------------------



END SIGNING AND PAVEMENT MARKINGS  
 STA. 40+14.00  
 MP. 0.573



THIS DOCUMENT HAS BEEN DIGITALLY  
 SIGNED AND SEALED BY:

ON THE DATE ADJACENT TO THE SEAL  
 PRINTED COPIES OF THIS DOCUMENT ARE  
 NOT CONSIDERED SIGNED AND SEALED  
 AND THE SIGNATURE MUST BE VERIFIED  
 ON ANY ELECTRONIC COPIES.

KIMLEY-HORN AND ASSOCIATES, INC.  
 1777 MAIN STREET, SUITE 200  
 SARASOTA, FL 34236  
 941-379-7600  
 CERTIFICATE OF AUTHORIZATION NO. 696  
 JORDAN E. LEEP, P.E. NO. 76102

**SIGNING AND PAVEMENT MARKING PLANS  
 ENGINEER OF RECORD:**

JORDAN E. LEEP, P.E.  
 P.E. NO.: 76102  
 KIMLEY-HORN AND ASSOCIATES, INC.  
 1777 MAIN STREET, SUITE 200  
 SARASOTA, FL 34236  
 PHONE (941) 379-7600 FAX (941) 379-4352  
 CONTRACT NO. C9C58  
 VENDOR NO. F560885615-001  
 CERTIFICATE OF AUTHORIZATION: 696

**FDOT PROJECT MANAGER:**

DAVID JONES

NAME OF CONTRACTOR PREFERRED MATERIALS, INC.  
 NAME OF ALL CONSULTANTS INVOLVED IN-HOUSE PROJECT  
 DISTRICT SECRETARY L.K. NANDAM, P.E.  
 RESIDENT ENGINEER ALBERT L. ROSENSTEIN, P.E.  
 PROJECT MANAGER GREGORY FALCONE  
 PROJECT ADMINISTRATOR ROBERT HILL  
 DATE WORK STARTED 05/17/2019  
 DATE OF FINAL ACCEPTANCE 09/16/2019

CONSTRUCTION CONTRACT NO.	FISCAL YEAR	SHEET NO.
E1R12	19	S-1

THE OFFICIAL RECORD OF THIS SHEET IS THE ELECTRONIC FILE DIGITALLY SIGNED AND SEALED UNDER RULE 61G15-23.004, F.A.C.

STATE OF FLORIDA  
DEPARTMENT OF TRANSPORTATION

CONTRACT PLANS

FINANCIAL PROJECT ID 436682-1-52-01

MANATEE COUNTY (13020)

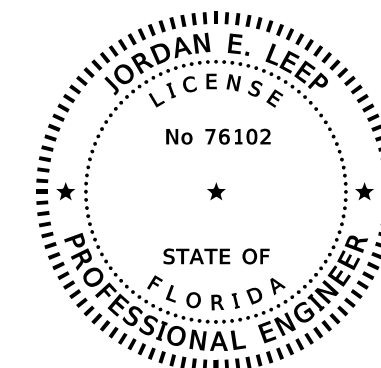
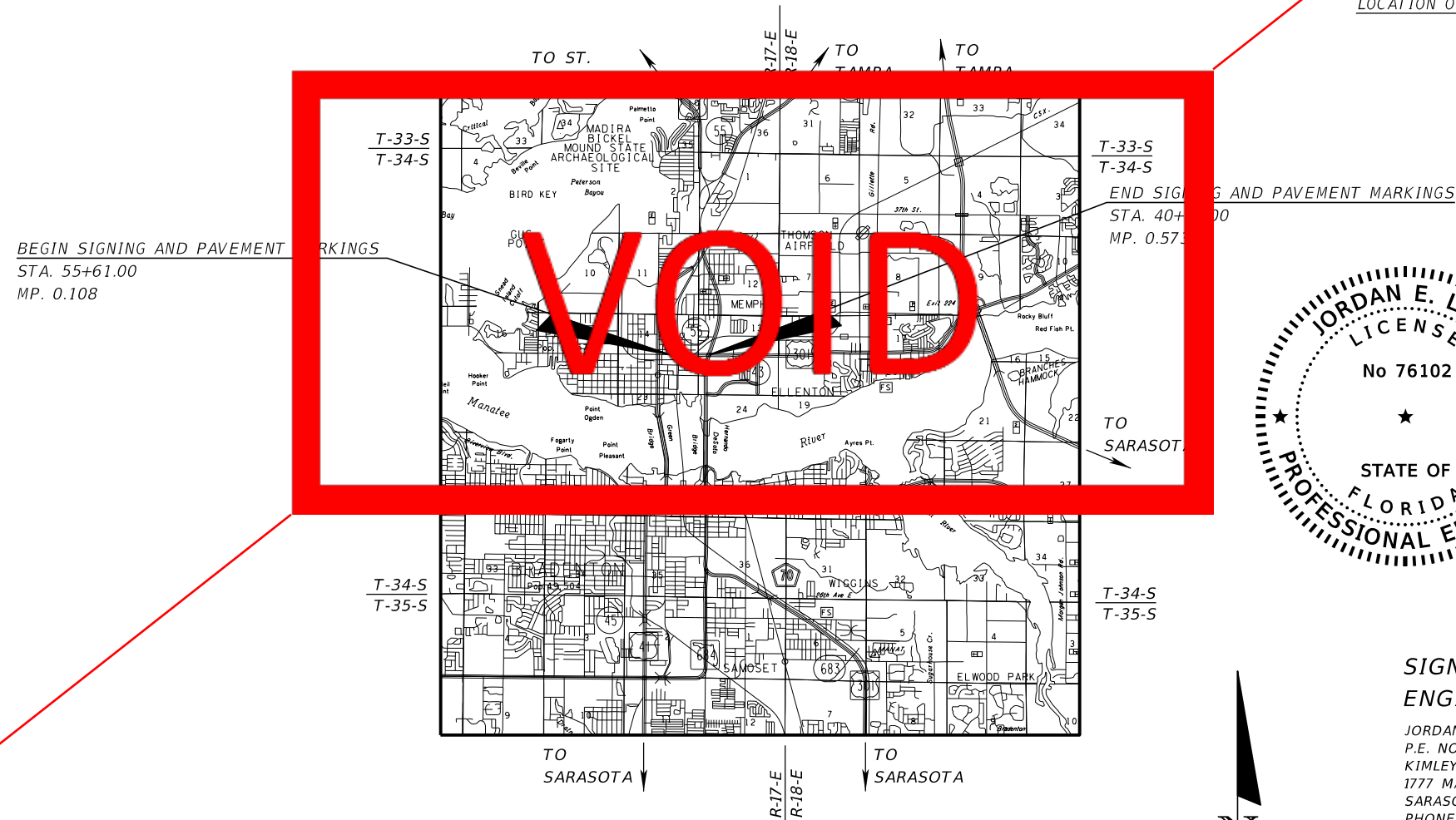
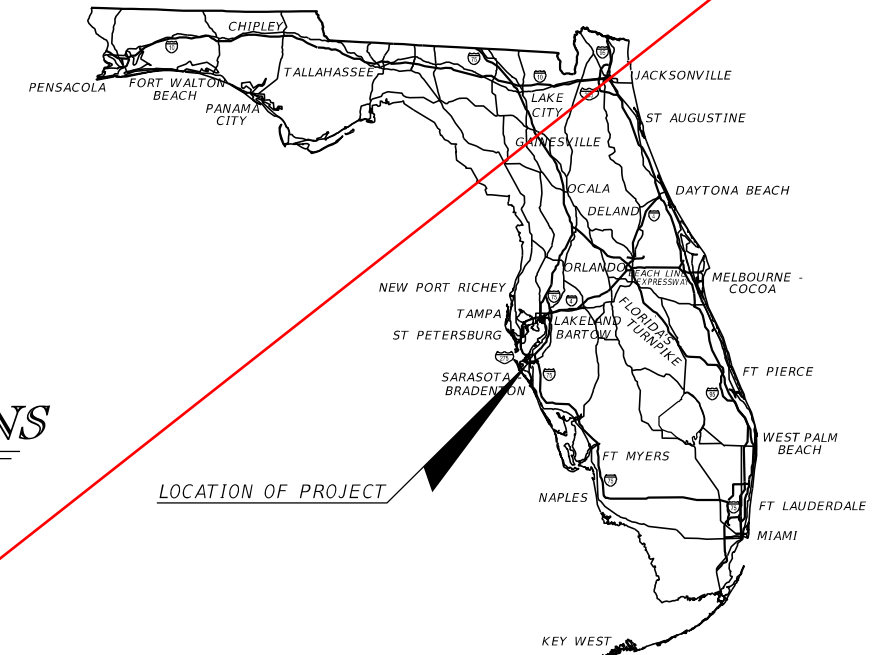
STATE ROAD NO. 43

FROM 6TH AVENUE DR. W TO 2ND AVENUE W

SIGNING AND PAVEMENT MARKING PLANS

INDEX OF SIGNING AND PAVEMENT MARKING PLANS

SHEET NO.	SHEET DESCRIPTION
S-1	KEY SHEET
S-2	TABULATION OF QUANTITIES
S-3	PAVEMENT MARKING LAYOUT CONTROL
S-4 - S-8	SIGNING AND PAVEMENT MARKING PLAN SHEETS



THIS DOCUMENT HAS BEEN DIGITALLY SIGNED AND SEALED BY:

ON THE DATE ADJACENT TO THE SEAL PRINTED COPIES OF THIS DOCUMENT ARE NOT CONSIDERED SIGNED AND SEALED AND THE SIGNATURE MUST BE VERIFIED ON ANY ELECTRONIC COPIES.

KIMLEY-HORN AND ASSOCIATES, INC.  
1777 MAIN STREET, SUITE 200  
SARASOTA, FL 34236  
941-379-7600  
CERTIFICATE OF AUTHORIZATION NO. 696  
JORDAN E. LEEP, P.E. NO. 76102

SIGNING AND PAVEMENT MARKING PLANS  
ENGINEER OF RECORD:

JORDAN E. LEEP, P.E.  
P.E. NO.: 76102  
KIMLEY-HORN AND ASSOCIATES, INC.  
1777 MAIN STREET, SUITE 200  
SARASOTA, FL 34236  
PHONE (941) 379-7600 FAX (941) 379-4352  
CONTRACT NO. C9C58  
VENDOR NO. F560885615-001  
CERTIFICATE OF AUTHORIZATION: 696

FDOT PROJECT MANAGER:

DAVID JONES

CONSTRUCTION CONTRACT NO.	FISCAL YEAR	SHEET NO.
E1R12	19	S-1

THE OFFICIAL RECORD OF THIS SHEET IS THE ELECTRONIC FILE DIGITALLY SIGNED AND SEALED UNDER RULE 61G15-23.004, F.A.C.

STATE OF FLORIDA, PROFESSIONAL ENGINEER, LICENSE NO.

THIS ITEM HAS BEEN DIGITALLY SIGNED AND SEALED BY  
ON THE DATE INDICATED HERE

PRINTED COPIES OF THIS DOCUMENT ARE NOT CONSIDERED SIGNED AND  
SEALED AND THE SIGNATURE MUST BE VERIFIED ON ANY ELECTRONIC  
COPIES.

Date	Name	Position (Title)	Review Type, If Applicable
<b>RESIDENT OFFICE</b>			
<b>DISTRICT OFFICE</b>			

REVISIONS				STATE OF FLORIDA DEPARTMENT OF TRANSPORTATION	FINAL "AS-BUILT" SIGNATURE SHEET	SHEET NO.
DATE	DESCRIPTION	DATE	DESCRIPTION			

TABULATION OF QUANTITIES

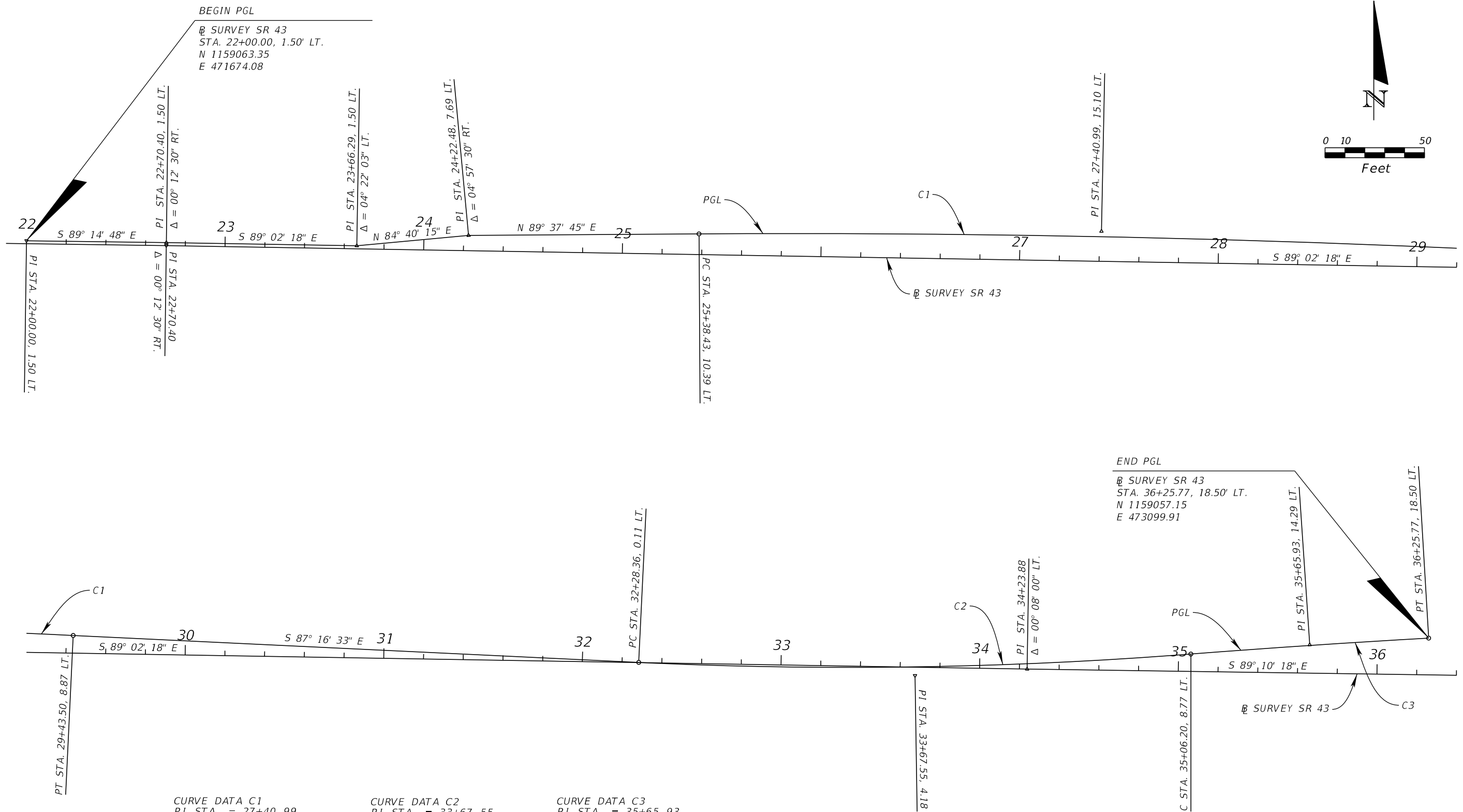
PAY ITEM NO.	DESCRIPTION	UNIT	SHEET NUMBERS												TOTAL THIS SHEET		GRAND TOTAL	
			S-4		S-5		S-6		S-7		S-8		PLAN	FINAL	PLAN	FINAL		
			PLAN	FINAL	PLAN	FINAL	PLAN	FINAL	PLAN	FINAL	PLAN	FINAL						
700-1-11	SINGLE POST SIGN, F&I GROUND MOUNT, UP TO 12 SF	AS			5	✓	1	✓	3	✓	8	✓			17	✓	17	✓
700-1-12	SINGLE POST SIGN, F&I GROUND MOUNT, 12-20 SF	AS						1	✓	1	✓			2	✓	2	✓	
700-1-50	SINGLE POST SIGN, RELOCATE	AS								1	✓			1	✓	1	✓	
700-1-60	SINGLE POST SIGN, REMOVE	AS			6	✓	2	✓	4	✓	8	✓		20	✓	20	✓	
705-10-1	OBJECT MARKER, TYPE 1	EA						1	✓	1	✓			2	✓	2	✓	
710-11-290	PAINTED PAVEMENT MARKINGS, STANDARD, YELLOW, ISLAND NOSE	SF							10		39			49	52	49	52	
710-90	PAINTED PAVEMENT MARKINGS, FINAL SURFACE	LS	1											1	✓	1	✓	
*	RETRO-REFLECTIVE PAVEMENT MARKERS	EA																
	WHITE/RED		9		13				36		37							
	YELLOW/YELLOW		18		32				52		12							
*	PAINTED PAVEMENT MARKINGS, STANDARD, WHITE, SOLID, 12"	LF			273				194		323							
*	PAINTED PAVEMENT MARKINGS, STANDARD, WHITE, SOLID, 18"	LF									78							
*	PAINTED PAVEMENT MARKINGS, STANDARD, WHITE, SOLID, 24"	LF			129		117		97		109							
*	PAINTED PAVEMENT MARKINGS, STANDARD, WHITE, DOTTED/2-4 DOTTED GUIDELINE/ 6-10 GAP EXTENSION, 6"	GM			0.133		0.040		0.068		0.113							
*	PAINTED PAVEMENT MARKINGS, STANDARD, WHITE, MESSAGE	EA			3		2		2		2							
*	PAINTED PAVEMENT MARKINGS, STANDARD, WHITE, ARROW	EA			1		5		5		1							
*	PAINTED PAVEMENT MARKINGS, STANDARD, YELLOW, SOLID, 18" FOR DIAGONAL OR CHEVRON	LF					2		54		53							
*	PAINTED PAVEMENT MARKINGS, STANDARD-OTHER SURFACES, WHITE, SOLID, 6"	GM	0.241		0.273		0.431		0.312		0.269							
*	PAINTED PAVEMENT MARKINGS, STANDARD-OTHER SURFACES, WHITE, SOLID, 8"	GM									0.052							
*	PAINTED PAVEMENT MARKINGS, OTHER SURFACES, WHITE, SKIP, 6", 10-30 SKIP OR 3-9 LANE DROP	GM	0.061		0.084		0.106		0.127		0.147							
*	PAINTED PAVEMENT MARKINGS, STANDARD-OTHER SURFACES, YELLOW, SOLID, 6"	GM	0.129		0.212		0.233		0.240		0.074							
*	PAINTED PAVEMENT MARKINGS, STANDARD-OTHER SURFACES, YELLOW, SOLID, 8"	GM									0.053							
*	PAINTED PAVEMENT MARKINGS, STANDARD-OTHER SURFACES, YELLOW, SKIP, 6"	GM					0.058											
711-11-123	THERMOPLASTIC, STANDARD, WHITE, SOLID, 12"	LF			273				194		323			790	772	790	772	
711-11-124	THERMOPLASTIC, STANDARD, WHITE, SOLID, 18"	LF									78			78	63	78	63	
711-11-125	THERMOPLASTIC, STANDARD, WHITE, SOLID, 24"	LF			129		117		97		109			452	676	452	676	
711-11-141	THERMOPLASTIC, STANDARD, WHITE, DOTTED/2-4 DOTTED GUIDELINE/ 6-10 GAP EXTENSION, 6"	GM			0.133		0.040		0.068		0.113			0.354	0.486	0.354	0.486	
711-11-160	THERMOPLASTIC, STANDARD, WHITE, MESSAGE	EA												9	✓	9	✓	
	RAILROAD				3		2		2									
	SCHOOL										2							
711-11-170	THERMOPLASTIC, STANDARD, WHITE, ARROW	EA												12	11	12	11	
	LEFT				1		5		5		1							
711-11-224	THERMOPLASTIC, STANDARD, YELLOW, SOLID, 18" FOR DIAGONAL OR CHEVRON	LF					2		54		53			109	95	109	95	
711-14-125	THERMOPLASTIC, PREFORMED, WHITE, SOLID, 24"	LF									201			201	0	201	0	
711-14-141	THERMOPLASTIC, PREFORMED, WHITE, 2-4 DOTTED GUIDELINE ON CONC. SURFACES	GM							0.050					0.050	0.052	0.050	0.052	
711-14-160	THERMOPLASTIC, PREFORMED, WHITE, MESSAGE	EA												14	✓	14	✓	
	BIKE MESSAGE		2		4		2		3		3							
711-14-170	THERMOPLASTIC, PREFORMED, WHITE, ARROWS	EA												14	✓	14	✓	
	BIKE THRU		2		4		3		2		3							
711-14-341	THERMOPLASTIC, PREFORMED, BLACK, 2-4 DOTTED GUIDELINE ON CONC. SURFACES	GM							0.050					0.050	0	0.050	0	
711-14-570	THERMOPLASTIC, PREFORMED, WHITE WITH BLACK CONTRAST, ARROW ON CONCRETE SURFACE	EA									1			1	✓	1	✓	
	LEFT								1									
711-16-101	THERMOPLASTIC, STANDARD-OTHER SURFACES, WHITE, SOLID, 6"	GM	0.241		0.273		0.431		0.312		0.269			1.526	1.477	1.526	1.477	
711-16-102	THERMOPLASTIC, STANDARD-OTHER SURFACES, WHITE, SOLID, 8"	GM									0.052			0.052	0.050	0.052	0.050	
711-16-131	THERMOPLASTIC, OTHER SURFACES, WHITE, SKIP, 6", 10-30 SKIP OR 3-9 LANE DROP	GM	0.061		0.084		0.106		0.127		0.147			0.525	0.390	0.525	0.390	
711-16-201	THERMOPLASTIC, STANDARD-OTHER SURFACES, YELLOW, SOLID, 6"	GM	0.129		0.212		0.233		0.242		0.074			0.890	0.929	0.890	0.929	
711-16-202	THERMOPLASTIC, STANDARD-OTHER SURFACES, YELLOW, SOLID, 8"	GM									0.053			0.053	0.004	0.053	0.004	
711-16-231	THERMOPLASTIC, STANDARD-OTHER SURFACES, YELLOW, SKIP, 6"	GM					0.058							0.058	0.046	0.058	0.046	
713-103-131	PERMANENT TAPE, WHITE, SKIP/DOTTED, 6" FOR CONC. SURFACES	GM							0.023					0.023	0.022	0.023	0.022	
713-103-331	PERMANENT TAPE, BLACK, SKIP/DOTTED, 6" FOR CONC. SURFACES	GM							0.023					0.023	0.022	0.023	0.022	

\* THESE QUANTITIES ARE PAID FOR UNDER PAINTED PAVEMENT MARKINGS (FINAL SURFACE), LUMP SUM - ITEM NO. 710-90. THE QUANTITIES SHOWN ARE FOR ONE APPLICATION; SEE SPECIFICATION 710 FOR THE NUMBER OF APPLICATIONS REQUIRED.

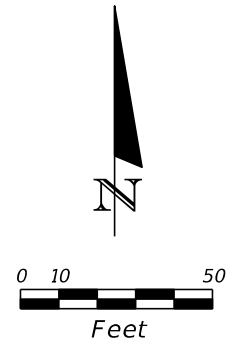
EDMS #1276144

REVISIONS DATE DESCRIPTION DATE DESCRIPTION				JORDAN E. LEEP, P.E. P.E. LICENSE NUMBER 76102 KIMLEY-HORN AND ASSOCIATES, INC. 1777 MAIN STREET, SUITE 200 SARASOTA, FL 34236 CERTIFICATE OF AUTHORIZATION NO. 696	STATE OF FLORIDA DEPARTMENT OF TRANSPORTATION			TABULATION OF QUANTITIES	SHEET NO. S-2
ROAD NO.		COUNTY			FINANCIAL PROJECT ID				
SR 43		MANATEE			436682-1-52-01				

THE OFFICIAL RECORD OF THIS SHEET IS THE ELECTRONIC FILE DIGITALLY SIGNED AND SEALED UNDER RULE 61G15-23.004, F.A.C.



BEGIN PGL  
 @ SURVEY SR 43  
 STA. 22+00.00, 1.50' LT.  
 N 1159063.35  
 E 471674.08



END PGL  
 @ SURVEY SR 43  
 STA. 36+25.77, 18.50' LT.  
 N 1159057.15  
 E 473099.91

CURVE DATA C1  
 PI STA. = 27+40.99  
 Δ = 3° 05' 41" (RT)  
 D = 0° 45' 50"  
 T = 202.61  
 L = 405.12  
 R = 7,500.00  
 PC STA. = 25+38.43  
 PT STA. = 29+43.50

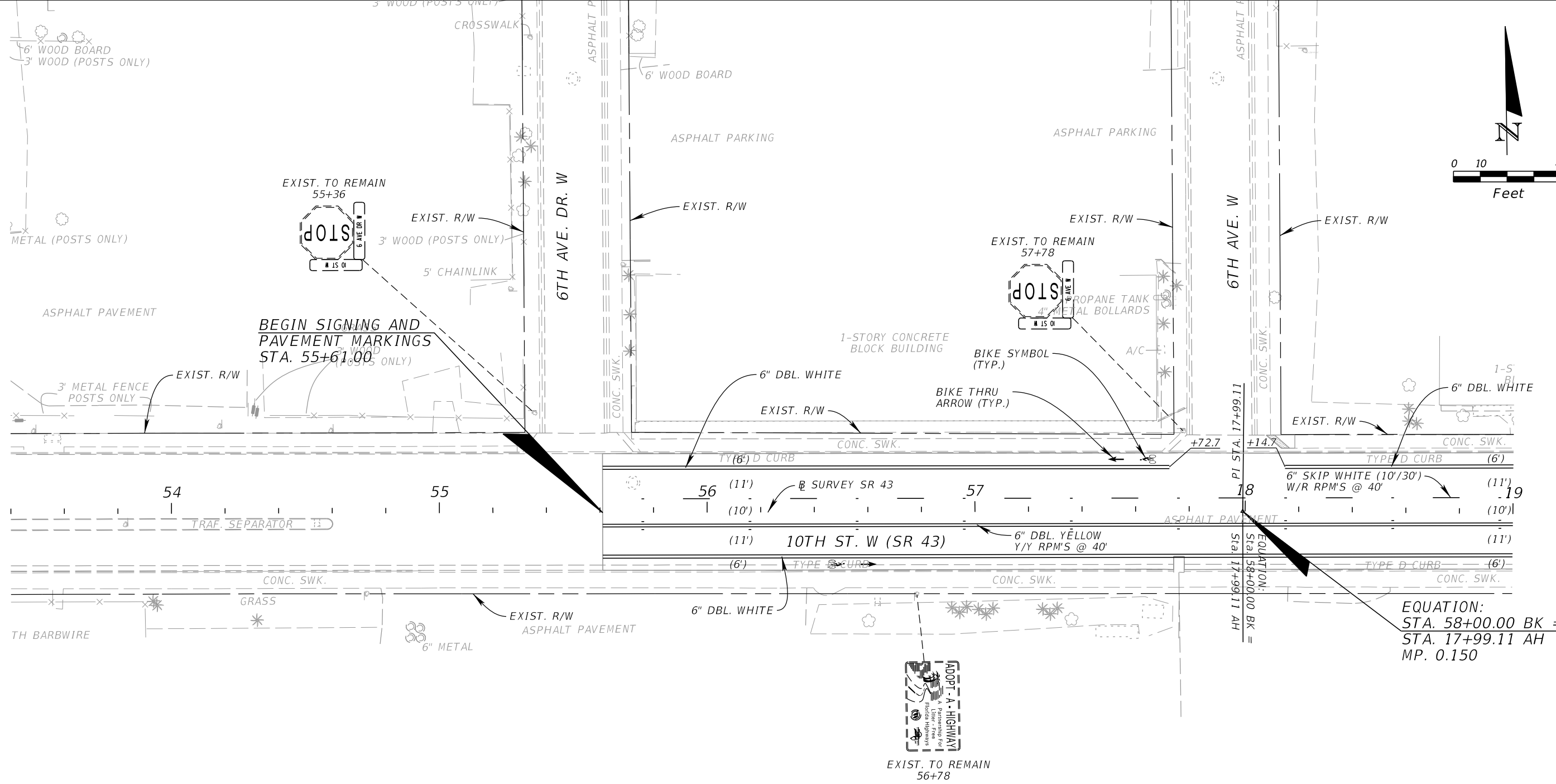
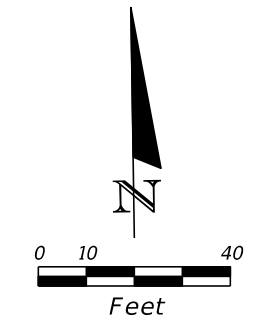
CURVE DATA C2  
 PI STA. = 33+67.55  
 Δ = 7° 10' 31" (LT)  
 D = 2° 34' 47"  
 T = 139.25  
 L = 278.14  
 R = 2,221.00  
 PC STA. = 32+28.36  
 PT STA. = 35+06.20

CURVE DATA C3  
 PI STA. = 35+65.93  
 Δ = 1° 14' 59" (RT)  
 D = 1° 02' 30"  
 T = 59.99  
 L = 119.97  
 R = 5,500.00  
 PC STA. = 35+06.20  
 PT STA. = 36+25.77

NOTE: SEE SUPPLEMENTAL PROJECT CONTROL SHEET FOR PGL HORIZONTAL CONTROL.

REVISIONS				JORDAN E. LEEP, P.E. P.E. LICENSE NUMBER 76102 KIMLEY-HORN AND ASSOCIATES, INC. 1777 MAIN STREET, SUITE 200 SARASOTA, FL 34236 CERTIFICATE OF AUTHORIZATION NO. 696	STATE OF FLORIDA DEPARTMENT OF TRANSPORTATION			<b>PAVEMENT MARKING LAYOUT CONTROL</b>	SHEET NO.
DATE	DESCRIPTION	DATE	DESCRIPTION		ROAD NO.	COUNTY	FINANCIAL PROJECT ID		
					SR 43	MANATEE	436682-1-52-01		S-3

THE OFFICIAL RECORD OF THIS SHEET IS THE ELECTRONIC FILE DIGITALLY SIGNED AND SEALED UNDER RULE 61G15-23.004, F.A.C.



BEGIN SIGNING AND PAVEMENT MARKINGS STA. 55+61.00

EQUATION:  
 STA. 58+00.00 BK =  
 STA. 17+99.11 AH  
 MP. 0.150

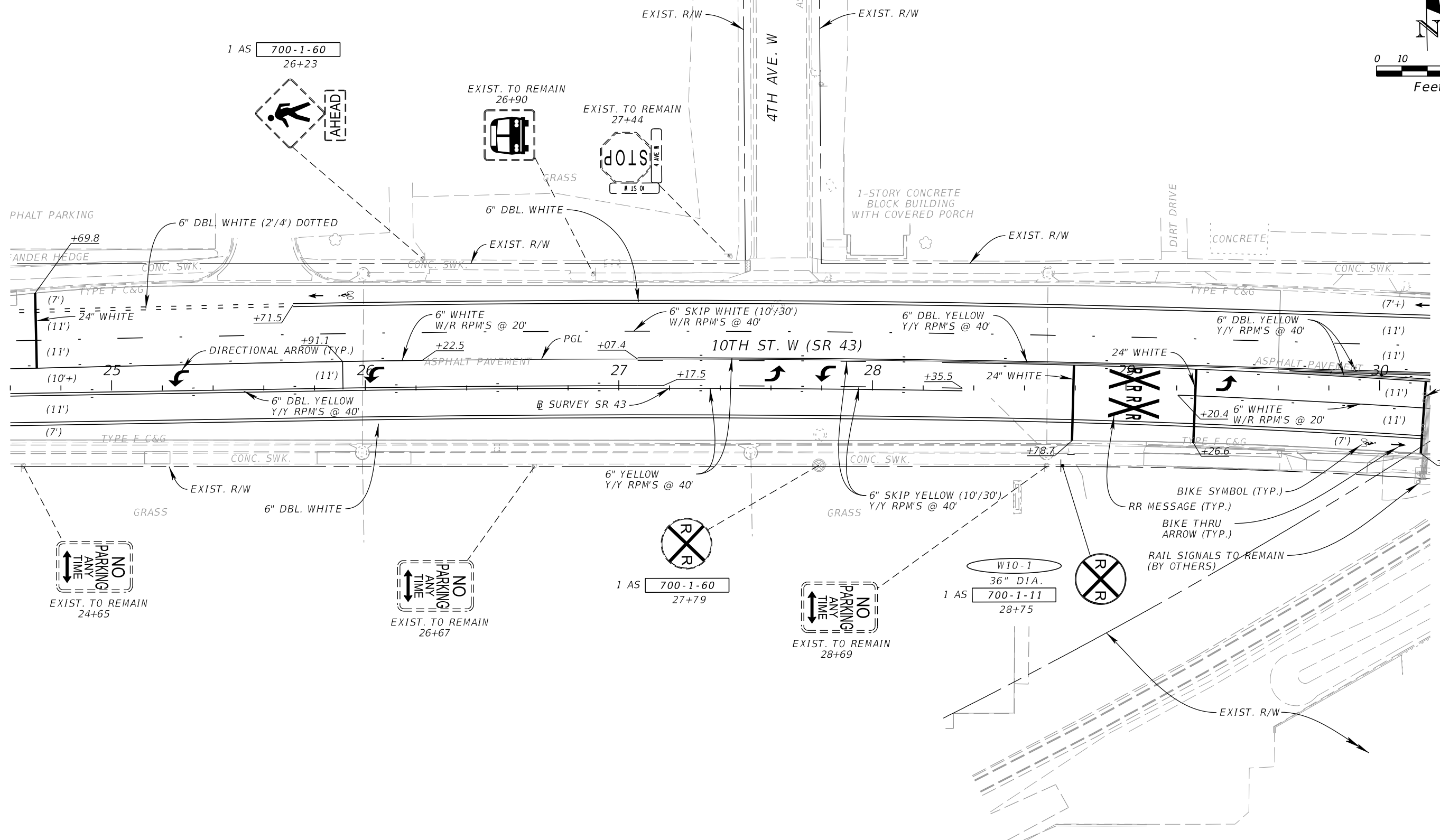
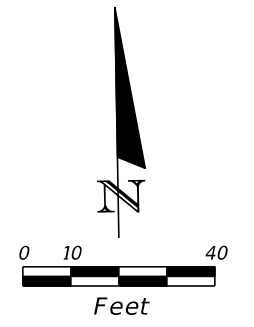
**GENERAL NOTES**

GIVE 14 DAYS NOTICE TO CSX TO MAKE A FLAGGER AVAILABLE FOR PLACEMENT OF FINAL THERMOPLASTIC. COMPLETE ALL THERMOPLASTIC STRIPING WITHIN RAIL RIGHT OF WAY WITHIN 1 DAY.

REVISIONS				JORDAN E. LEEP, P.E. P.E. LICENSE NUMBER 76102 KIMLEY-HORN AND ASSOCIATES, INC. 1777 MAIN STREET, SUITE 200 SARASOTA, FL 34236 CERTIFICATE OF AUTHORIZATION NO. 696	STATE OF FLORIDA DEPARTMENT OF TRANSPORTATION			<b>SIGNING &amp; PAVEMENT          MARKING PLAN SHEET (1)</b>	SHEET NO.  S-4
DATE	DESCRIPTION	DATE	DESCRIPTION		ROAD NO.	COUNTY	FINANCIAL PROJECT ID		
					SR 43	MANATEE	436682-1-52-01		

THE OFFICIAL RECORD OF THIS SHEET IS THE ELECTRONIC FILE DIGITALLY SIGNED AND SEALED UNDER RULE 61G15-23.004, F.A.C.





REVISIONS			
DATE	DESCRIPTION	DATE	DESCRIPTION

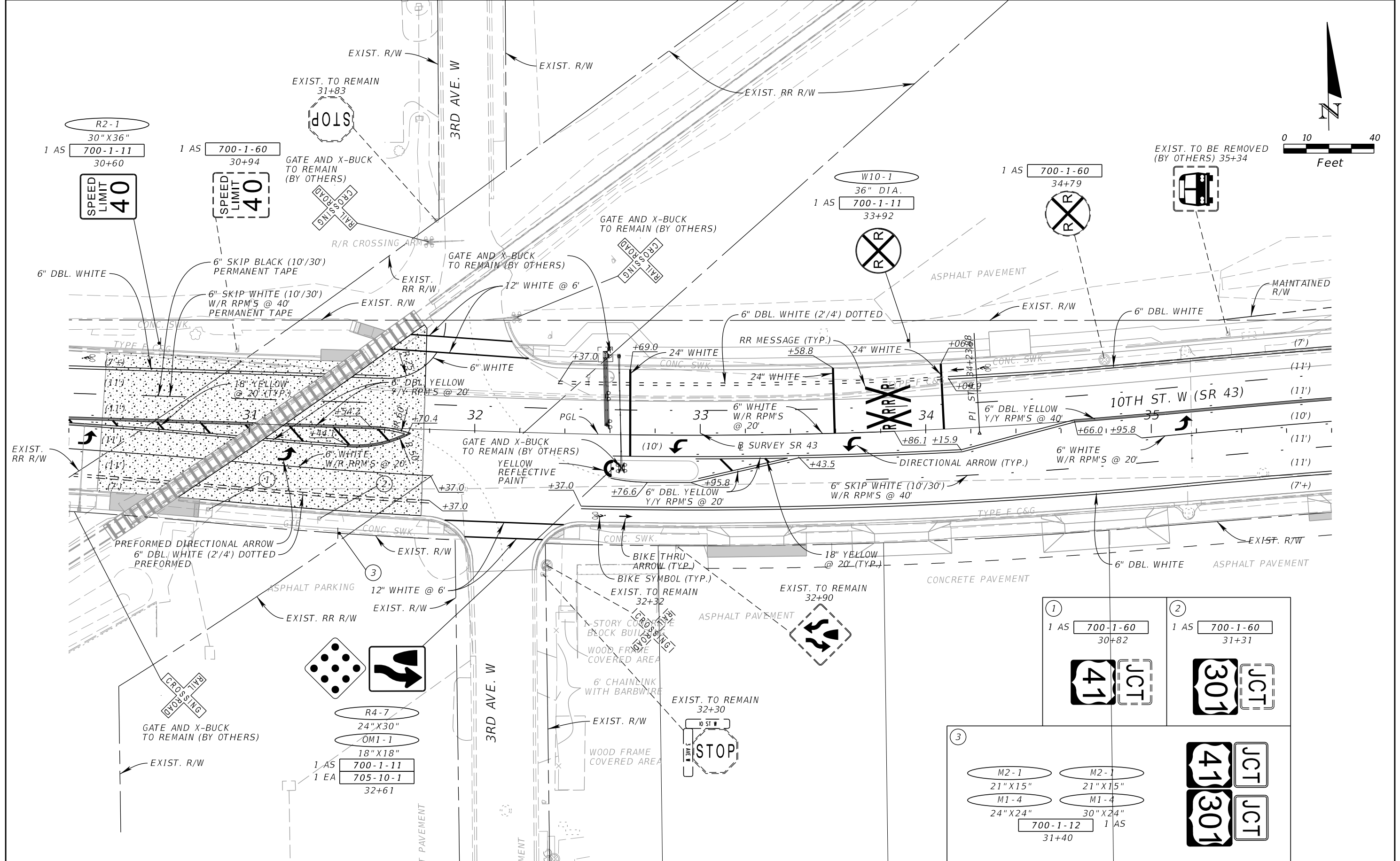
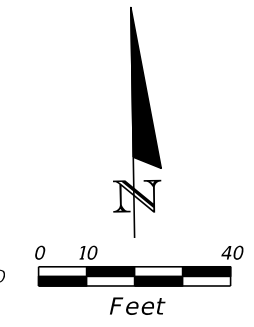
JORDAN E. LEEP, P.E.  
 P.E. LICENSE NUMBER 76102  
 KIMLEY-HORN AND ASSOCIATES, INC.  
 1777 MAIN STREET, SUITE 200  
 SARASOTA, FL 34236  
 CERTIFICATE OF AUTHORIZATION NO. 696

STATE OF FLORIDA DEPARTMENT OF TRANSPORTATION		
ROAD NO.	COUNTY	FINANCIAL PROJECT ID
SR 43	MANATEE	436682-1-52-01

**SIGNING & PAVEMENT  
 MARKING PLAN SHEET (3)**

SHEET NO.  
 S-6

THE OFFICIAL RECORD OF THIS SHEET IS THE ELECTRONIC FILE DIGITALLY SIGNED AND SEALED UNDER RULE 61G15-23.004, F.A.C.



JORDAN E. LEEP, P.E.  
 P.E. LICENSE NUMBER 76102  
 KIMLEY-HORN AND ASSOCIATES, INC.  
 1777 MAIN STREET, SUITE 200  
 SARASOTA, FL 34236  
 CERTIFICATE OF AUTHORIZATION NO. 696

STATE OF FLORIDA DEPARTMENT OF TRANSPORTATION		
ROAD NO.	COUNTY	FINANCIAL PROJECT ID
SR 43	MANATEE	436682-1-52-01

**SIGNING & PAVEMENT  
 MARKING PLAN SHEET (4)**

SHEET NO.  
 S-7

THE OFFICIAL RECORD OF THIS SHEET IS THE ELECTRONIC FILE DIGITALLY SIGNED AND SEALED UNDER RULE 61G15-23.004, F.A.C.

