

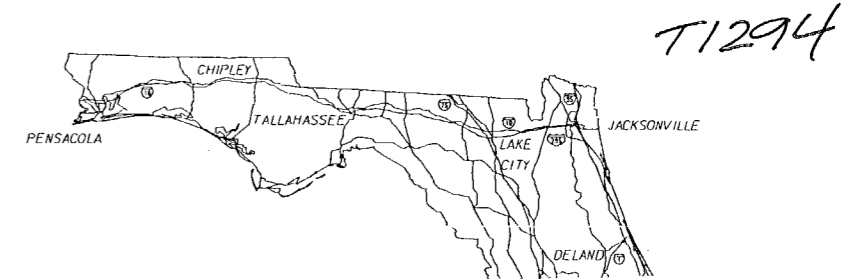
COMPONENTS OF CONTRACT PLANS SET

ROADWAY PLANS
SIGNING AND PAVEMENT MARKING PLANS

STATE OF FLORIDA
DEPARTMENT OF TRANSPORTATION

FINAL AS-BUILT PLANS
CONTRACT PLANS

FINANCIAL PROJECT ID 420253-1-52-01
(FEDERAL FUNDS)
MANATEE COUNTY (13075)
STATE ROAD NO. 93 (I-75)



A DETAILED INDEX APPEARS ON THE
KEY SHEET OF EACH COMPONENT

INDEX OF ROADWAY PLANS

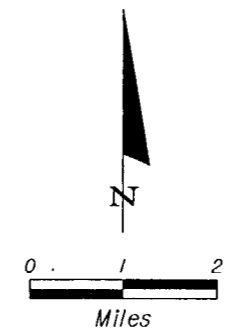
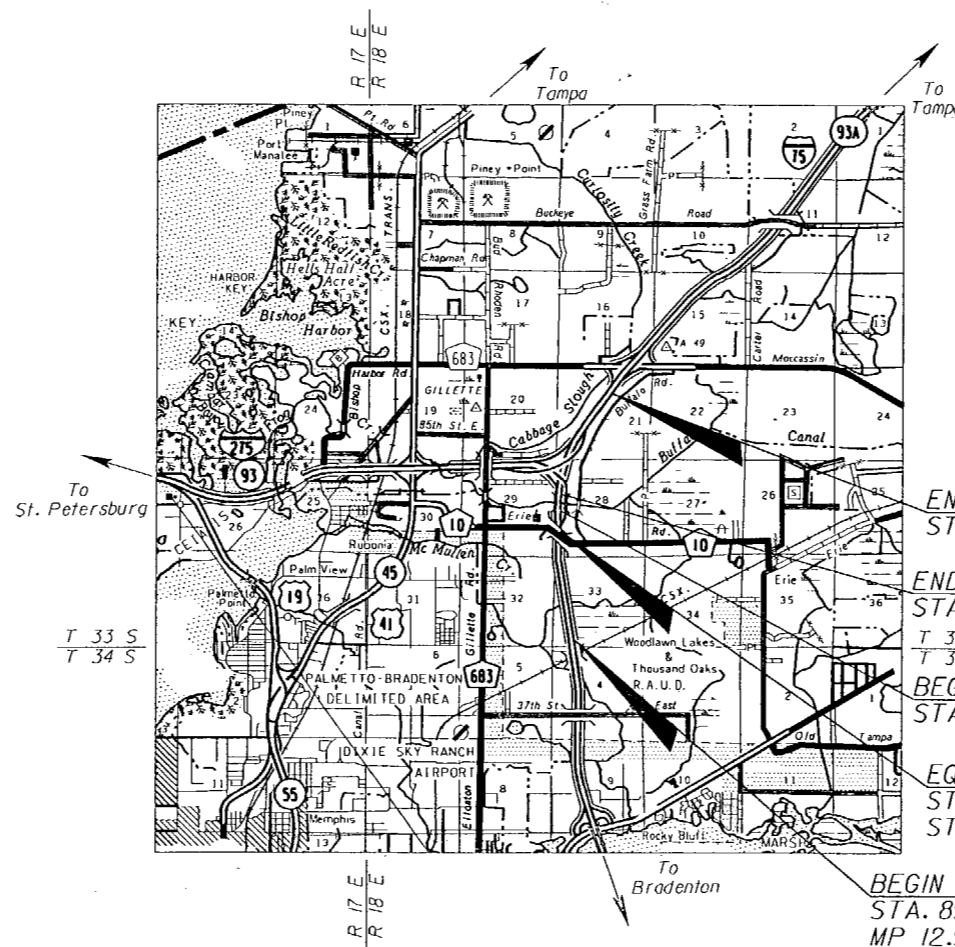
SHEET NO.	SHEET DESCRIPTION
1	KEY SHEET
2	SUMMARY OF PAY ITEMS
3-4	TYPICAL SECTION
5-6	SUMMARY OF QUANTITIES
7	BENCHMARK DATA
8-9	PROJECT LAYOUT
10	GENERAL NOTES
11-17	ROADWAY PLAN SHEETS
18	INTERCHANGE LAYOUT
19	EMERGENCY CROSSOVER DETAIL
20	TRAFFIC CONTROL PLAN

INDEX OF FINAL PLANS

COMPUTATION BOOK 1

GOVERNING STANDARDS AND SPECIFICATIONS:
FLORIDA DEPARTMENT OF TRANSPORTATION,
DESIGN STANDARDS DATED 2008,
AND STANDARD SPECIFICATIONS FOR ROAD AND
BRIDGE CONSTRUCTION DATED 2007,
AS AMENDED BY CONTRACT DOCUMENTS.

APPLICABLE DESIGN STANDARDS MODIFICATIONS: 07/01/08
For Design Standards modifications go to the following Web site:
<http://www.dot.state.fl.us/rddesign/DesignStandards/Standards.htm>



CONTRACTOR: AJAX PAVING INDUSTRIES OF FL, LLC
DISTRICT SECRETARY: STAN CANN, P.E.
OPERATIONS ENGINEER: LANCE GRACE, P.E.
PROJECT ADMINISTRATOR: SCOTT GUTHRIE
WORK STARTED: AUGUST 3, 2009
WORK FINAL ACCEPTED: NOVEMBER 10, 2009

"This project was constructed in substantial compliance
with these plans as provided by the Engineer of Record. If
changes were made, those changes are indicated by black
ink revision and bear the seal and signature of the
Responsible Engineer."

Lance H. Grace 12/3/2009
Lance H. Grace, P.E. Date

ROADWAY SHOP DRAWINGS
TO BE SUBMITTED TO:

ENGINEER OF RECORD:
EDUARDO A. PONCE, P.E.
FLORIDA DEPARTMENT OF TRANSPORTATION
DISTRICT ONE OFFICE
801 NORTH BROADWAY AVE.
BARTON, FLORIDA 33830-3809
(863) 519-2300

NOTE: THE SCALE OF THESE PLANS MAY
HAVE CHANGED DUE TO REPRODUCTION.

NOTE: THIS IS A LUMP SUM PROJECT.

LENGTH OF PROJECT

	LINEAR FEET	MILES
ROADWAY	14,414.55	2.730
BRIDGES	110.00	0.021
NET LENGTH OF PROJECT	14,524.55	2.751
EXCEPTIONS	0.00	0.000
GROSS LENGTH OF PROJECT	14,524.55	2.751

FDOT PROJECT MANAGER: RICHARD D. RYALS

KEY SHEET REVISIONS

DATE	BY	DESCRIPTION

ROADWAY PLANS
ENGINEER OF RECORD: EDUARDO A. PONCE, P.E.

P.E. NO.: 56818

FISCAL YEAR	SHEET NO.
09	1

Lance H. Grace
12/3/2009

NOTICE: THE OFFICIAL RECORD OF THIS SHEET IS THE ELECTRONIC FILE SIGNED AND SEALED UNDER RULE 61G15-23.003, F.A.C.

1 DATE: 06/12/08

FLORIDA DEPARTMENT OF TRANSPORTATION
PROPOSAL SUMMARY OF PAY ITEMS

PAGE: 1 A0001

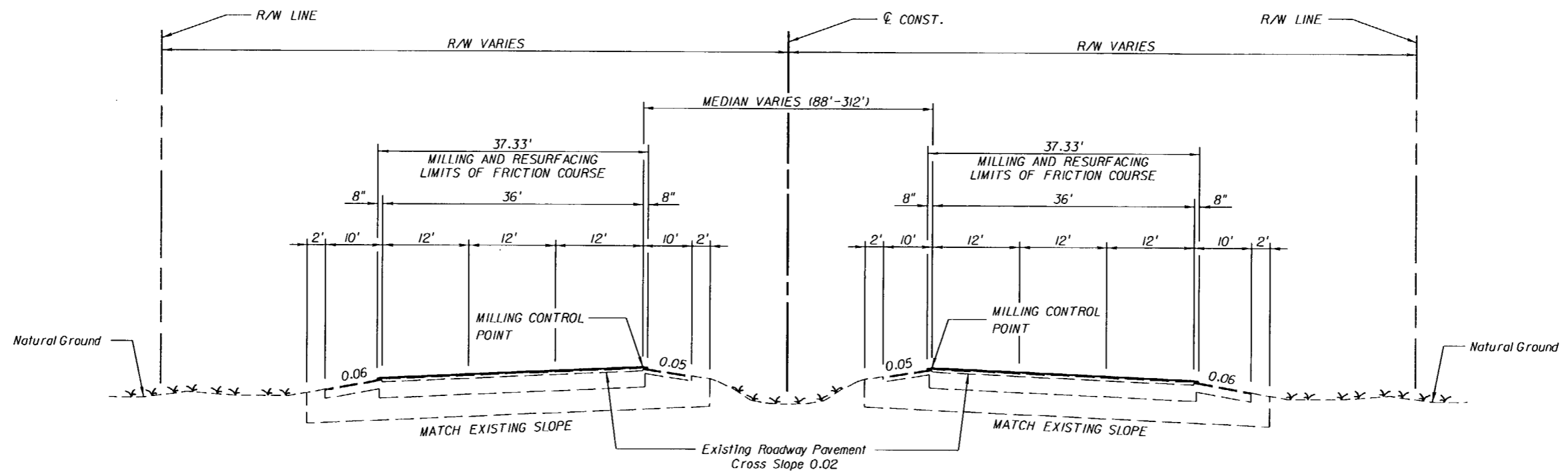
PROPOSAL : T1294 LEAD PROJECT : 42025315201 COUNTY : MANATEE
PROJECT(S): 42025315201 COUNTY/SECTION: 13075000

MANDIST: 01

0001 SUMMARY OF ROADWAY			PAY ITEMS		
ALT	ITEM NUMBER	ITEM DESCRIPTION	UN IT	42025315201	QUANTITY TOTAL
	10999- 2-	LUMP SUM CONTRACT, ALTERNATIVE BIDDING	LS	1.000	1.000
	10999- 25-	INITIAL CONTINGENCY AMOUNT, DO NOT BID	LS	1.000	1.000
	10999-102- 1	SPEED & LAW ENFORCEMENT OFFICER, STATE FURNISHED, CENTRAL CONTRACT	MH	571.000	571.000

REVISIONS						ROADWAY ENGINEER OF RECORD: EDUARDO A. PONCE, P.E. (156818) FLORIDA DEPARTMENT OF TRANSPORTATION 801 N BROADWAY AVENUE P.O. BOX 1249 BARTON, FLORIDA 33830-3809/33831-1249	STATE OF FLORIDA DEPARTMENT OF TRANSPORTATION			SUMMARY OF PAY ITEMS	SHEET NO.
DATE	BY	DESCRIPTION	DATE	BY	DESCRIPTION		ROAD NO.	COUNTY	FINANCIAL PROJECT ID		
							93	MANATEE	420253-1-52-01		2

NOTICE: THE OFFICIAL RECORD OF THIS SHEET IS THE ELECTRONIC FILE SIGNED AND SEALED UNDER RULE 605-23.003, F.A.C.



**TYPICAL SECTION
SR 93**

STA. 89+90.08 TO STA. 159+10.00 (RIGHT ROADWAY)
 STA. 108+68.92 TO STA. 159+10.00 (LEFT ROADWAY)
 EQUATION 159+10.00 BK. = 59+10.00 AH.
 STA. 59+10.00 TO STA. 71+02.28
 STA. 71+02.28 TO STA. 72+12.28 BRIDGE EXCEPTION (Bridge No. 130108)
 STA. 72+12.28 TO STA. 135+14.63

MILLING

MILL EXISTING ASPHALT PAVEMENT (3/4" AVG. DEPTH)

RESURFACING

FC-5 BONDED FRICTION COURSE (3/4") (PG 76-22)

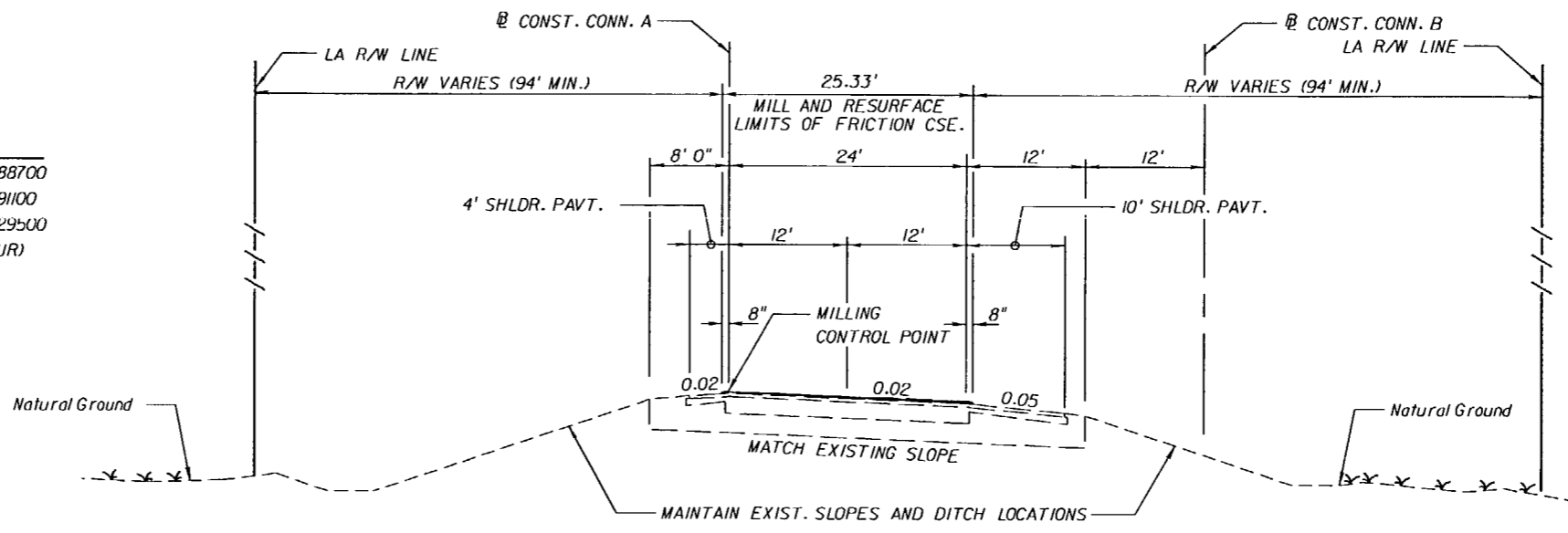
TRAFFIC DATA

CURRENT YEAR ESTIMATE = 2008 AADT = 88700
 OPENING YEAR ESTIMATE = 2009 AADT = 91100
 DESIGN YEAR ESTIMATE = 2025 AADT = 129500
 K = 9.1% D = 51.2% T = 13.0% (24 HOUR)
 DESIGN HOUR T = 6.5%
 DESIGN SPEED = 70 MPH
 POSTED SPEED = 70 MPH

REVISIONS						ROADWAY ENGINEER OF RECORD: EDUARDO A. PONCE, P.E. (56818) FLORIDA DEPARTMENT OF TRANSPORTATION 801 N BROADWAY AVENUE P.O. BOX 1249 BARTON, FLORIDA 33830-3809/33831-1249	STATE OF FLORIDA DEPARTMENT OF TRANSPORTATION			SHEET NO. 3
DATE	BY	DESCRIPTION	DATE	BY	DESCRIPTION		ROAD NO.	COUNTY	FINANCIAL PROJECT ID	
						93	MANATEE	420253-1-52-01		

NOTICE: THE OFFICIAL RECORD OF THIS SHEET IS THE ELECTRONIC FILE SIGNED AND SEALED UNDER RULE 61G15-23.003, F.A.C.

TRAFFIC DATA
 CURRENT YEAR ESTIMATE = 2008 AADT = 88700
 OPENING YEAR ESTIMATE = 2009 AADT = 91100
 DESIGN YEAR ESTIMATE = 2025 AADT = 129500
 K = 9.1% D = 51.2% T = 13.0% (24 HOUR)
 DESIGN HOUR T = 6.5%
 DESIGN SPEED = 70 MPH
 POSTED SPEED = 70 MPH

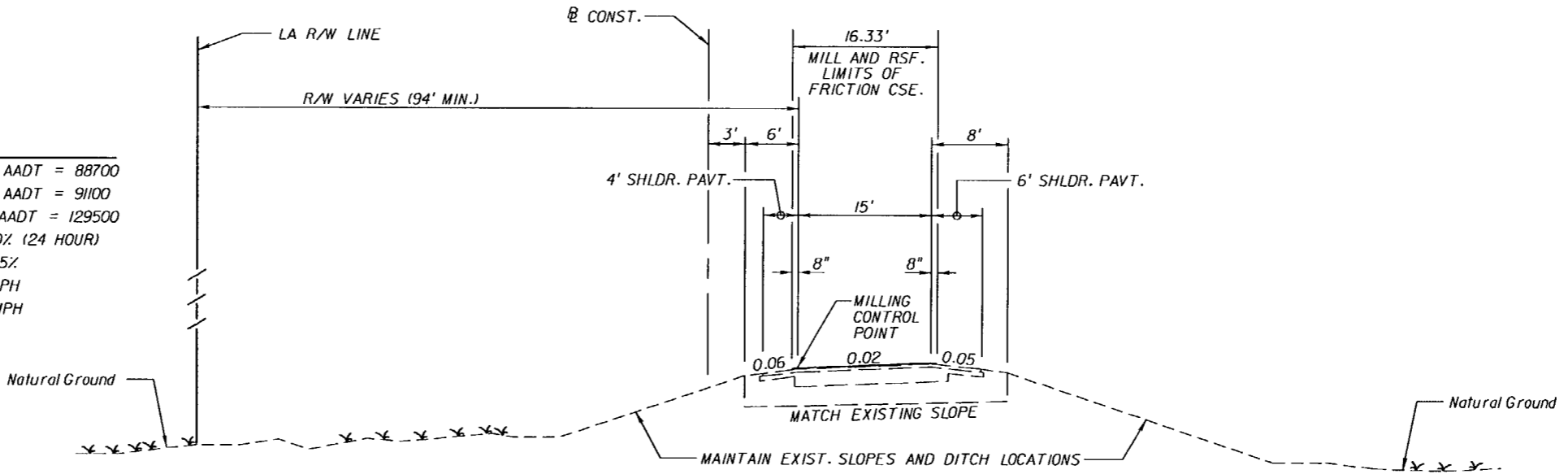


MILLING
 MILL EXISTING ASPHALT PAVEMENT (3/4" AVG. DEPTH)

RESURFACING
 FC-5 BONDED FRICTION COURSE (3/4") (PG 76-22)

TYPICAL SECTION
CONNECTOR "A" **CONNECTOR "B"**
 STA. 15+95.04 TO STA. 77+28.64 STA. 159+00.00 TO STA. 206+55.89
 (TWO LANE RAMP)

TRAFFIC DATA
 CURRENT YEAR ESTIMATE = 2008 AADT = 88700
 OPENING YEAR ESTIMATE = 2009 AADT = 91100
 DESIGN YEAR ESTIMATE = 2025 AADT = 129500
 K = 9.1% D = 51.2% T = 13.0% (24 HOUR)
 DESIGN HOUR T = 6.5%
 DESIGN SPEED = 70 MPH
 POSTED SPEED = 70 MPH



MILLING
 MILL EXISTING ASPHALT PAVEMENT (3/4" AVG. DEPTH)

RESURFACING
 FC-5 BONDED FRICTION COURSE (3/4") (PG 76-22)

TYPICAL SECTION
CONNECTOR "C" **CONNECTOR "D" (MIRROR IMAGE)**
 STA. 10+00.00 TO STA. 61+69.24 STA. 19+93.89 TO STA. 82+26.69
 (SINGLE LANE RAMP)

REVISIONS						ROADWAY ENGINEER OF RECORD: EDUARDO A. PONCE, P.E. (56818) FLORIDA DEPARTMENT OF TRANSPORTATION 801 N BROADWAY AVENUE P.O. BOX 1249 BARTON, FLORIDA 33830-3809/33831-1249	STATE OF FLORIDA DEPARTMENT OF TRANSPORTATION			SHEET NO. 4
DATE	BY	DESCRIPTION	DATE	BY	DESCRIPTION		ROAD NO.	COUNTY	FINANCIAL PROJECT ID	
						93	MANATEE	420253-1-52-01		

NOTICE: THE OFFICIAL RECORD OF THIS SHEET IS THE ELECTRONIC FILE SIGNED AND SEALED UNDER RULE 61G05-23.003, F.A.C.

SUMMARY OF GUARDRAIL

LOCATION	GUARDRAIL (LF)										END ANCHORAGE ASSEMBLIES (EA)				BRIDGE ANCHORAGE ASSEMBLIES (EA)				REMARKS	FIELD BOOK REFERENCE
	STATION TO STATION	SIDE	REMOVE		ROADWAY (THRIE BEAM)		ROADWAY		RFSET		FLARED		TYPE II		THRIE BEAM		W BEAM			
			P	F	STATION	P	F	STATION	P	F	STATION	P	F	P	F	P	F	P		
LT. ROADWAY (E SURVEY 1-75)																				
72+12.28 TO 75+87.28	LT. Med.	375	375	72+08.53 TO 72+52.28	43.75	43.75			72+52.28 TO 75+89.78	337.5	337.5	/	/			/	/			
RT. ROADWAY (BLNB 1-75)																				
166+80.59 TO 170+55.59	LT.	375	375	170+15.59 TO 170+59.34	43.75	43.75			166+78.09 TO 170+15.59	337.5	337.5	/	/			/	/			
169+70.21 TO 170+46.36	RT.	76	76	170+06.36 TO 170+50.11	43.75	43.75			169+68.86 TO 170+06.36	37.5	37.5	/	/			/	/			
RAMP A																				
31+03.68 TO 36+01.97	LT.	500	0	35+58.22 TO 36+01.97	43.75	0			30+95.72 TO 35+58.22	462.5	0	/	0			/	0			
32+90.77 TO 36+01.97	RT.	312.5	0	35+58.22 TO 36+01.97	43.75	0			32+83.22 TO 35+58.22	275	0	/	0			/	0			
37+29.97 TO 45+72.42	LT.	840	0	45+28.67 TO 45+72.42	43.75	0			37+29.97 TO 45+28.67	796.2	0	/	0			/	0	/	0	
37+29.97 TO 45+72.42	RT.	857	0	45+28.67 TO 45+72.42	43.75	0			37+29.97 TO 45+28.67	813.3	0	/	0			/	0	/	0	
RAMP B																				
172+28.18 TO 173+04.37	LT.	75	75	172+65.68 TO 173+09.43	43.75	43.75			172+28.18 TO 172+65.68	37.5	37.5	/	/			/	/			
192+06.50 TO 196+12.50	RT.						192+06.50 TO 196+12.50	400	400			/	/	/	/					
RAMP D																				
26+06.81 TO 39+34.40	LT.	1325	0	38+90.65 TO 39+34.40	43.75	43.75			26+03.15 TO 38+90.65	1287.5	0	/	/			/	/			
26+09.94 TO 39+34.40	RT.	1325	0	38+90.65 TO 39+34.40	43.75	43.75			26+03.15 TO 38+90.65	1287.5	0	/	/			/	/			

MISCELLANEOUS ASPHALT PAVEMENT

STATION	SIDE	TN		STATION	SIDE	TN	
		P	F			P	F
LT. ROADWAY (E SURVEY 1-75)				RT. ROADWAY (BLNB 1-75)			
72+32.82 TO 75+99.78	LT. Med.	12.23	12.23	166+68.09 TO 170+35.32	LT.	12.24	12.24
				169+58.86 TO 170+26.09	RT.	2.24	2.24
RAMP B				RAMP A			
172+48.18 TO 173+14.37	LT.	3.56	3.56	30+85.72 TO 35+81.97	LT.	24.81	0
191+96.50 TO 196+22.50	RT.	21.00	21.00	32+73.22 TO 35+81.97	RT.	15.44	0
RAMP D				37+49.97 TO 45+52.42	LT.	26.67	0
25+93.15 TO 39+14.40	LT.	66.06	3.69	37+49.97 TO 45+52.42	RT.	40.85	0
25+93.15 TO 39+14.40	RT.	44.04	5.90				

* These items were deleted to harmonize construction activities between two on going projects. These items were added to project 412851-1-52-01...

** These items were deleted because they met the requirements of the Design Standards and replacement was not necessary...

Jane Heath
12/3/2009

CONSTRUCT MISC. ASPHALT PER INDEX NO. 400 SHEET 14 OF 23

QUANTITIES FOR ESTIMATING PURPOSES ONLY

REVISIONS				ROADWAY ENGINEER OF RECORD:				STATE OF FLORIDA			SHEET NO.
DATE	BY	DESCRIPTION	DATE	BY	DESCRIPTION	DEPARTMENT OF TRANSPORTATION					
						ROAD NO.	COUNTY	FINANCIAL PROJECT ID			
						93	MANATEE	420253-1-52-01	SUMMARY OF QUANTITIES	5	

NOTICE: THE OFFICIAL RECORD OF THIS SHEET IS THE ELECTRONIC FILE SIGNED AND SEALED UNDER RULE 61G15-23.003, F.A.C.

SUMMARY OF ROCK BAGS		
STATION	GUTTER INLET	QUAN. (EA.)
LT. RDWY. (C SURVEY 1-75)		
86+70.00	TYPE S	20
90+00.00	TYPE S	20
93+00.00	TYPE S	20
96+00.00	TYPE S	20
98+50.00	TYPE S	20
69+50.00	TYPE S	20
70+68.21	TYPE S	20
RT. RDWY. (BLNB 1-75)		
88+00.00	TYPE S	20
91+00.00	TYPE S	20
94+00.00	TYPE S	20
97+00.00	TYPE S	20
99+50.00	TYPE S	20

LOCATION	SIDE	LENGTH (LF)
STA. TO STA.		
LEFT ROADWAY (C SURVEY 1-75)		
86+45.00 TO 87+25.00	LT.	80
86+75.00 TO 87+25.00	RT.	50
89+75.00 TO 90+25.00	LT.	50
92+75.00 TO 93+25.00	LT.	50
95+75.00 TO 96+25.00	LT.	50
98+25.00 TO 98+75.00	LT.	50
115+51.58 TO 117+47.67	LT.	200
115+28.75 TO 117+28.96	RT.	200
121+68.74 TO 123+64.84	LT.	200
121+60.20 TO 123+60.09	Med. LT.	200
128+14.10 TO 150+00.00	LT.	2,186
127+10.09 TO 131+10.09	Med. LT.	400
59+75.00 TO 60+25.00	LT.	50
59+95.00 TO 60+05.00	LT./RT.	40
69+00.00 TO 71+30.58	LT.	231
69+45.00 TO 69+55.00	LT./RT.	40
70+84.38 TO 71+10.22	LT./RT.	73
71+94.38 TO 72+12.28	LT./RT.	70
73+45.00 TO 73+55.00	LT./RT.	40
85+25.00 TO 85+35.00	LT./RT.	40
84+33.45 TO 86+26.52	LT.	200
94+95.00 TO 95+05.00	LT./RT.	40
94+51.72 TO 95+48.28	LT.	100
102+51.68 TO 103+48.32	LT.	100
110+96.09 TO 111+06.08	Med. LT.	40
113+50.00 TO 114+50.00	LT.	100
113+95.00 TO 114+05.00	LT./RT.	40
120+50.00 TO 121+50.00	LT.	100
120+95.00 TO 121+05.00	LT./RT.	40
129+50.00 TO 130+50.00	LT.	100
129+95.00 TO 130+05.00	LT./RT.	40
RIGHT ROADWAY (BLNB 1-75)		
86+90.00 TO 87+40.00	LT.	50
86+90.00 TO 87+40.00	RT.	50
87+75.00 TO 88+25.00	RT.	50
90+75.00 TO 91+25.00	RT.	50
93+75.00 TO 94+25.00	RT.	50
96+75.00 TO 97+25.00	RT.	50
99+25.00 TO 99+75.00	RT.	50
101+50.00 TO 102+50.00	LT.	100
101+50.00 TO 102+50.00	RT.	100
115+25.95 TO 116+25.95	LT.	100
115+08.03 TO 116+08.03	RT.	100
121+23.09 TO 122+23.09	LT.	100
121+12.72 TO 122+12.72	RT.	100
128+21.85 TO 129+21.85	LT.	100
127+82.13 TO 128+82.13	RT.	100
134+29.06 TO 144+33.75	RT.	994
RIGHT ROADWAY (C SURVEY 1-75)		
144+62.54 TO 149+00.00	RT.	466
69+25.00 TO 69+75.00	RT.	50
70+60.63 TO 70+75.15	RT.	115
71+85.15 TO 71+85.71	RT.	34
71+85.71 TO 80+00.00	RT.	814
97+47.00 TO 103+25.83	RT.	560
DITCH BLOCKS PROJECT		
DITCH BLOCKS AT 300' SPACING		
3 DITCH BLOCKS X 30'		
PER DITCH BLOCK		4,358

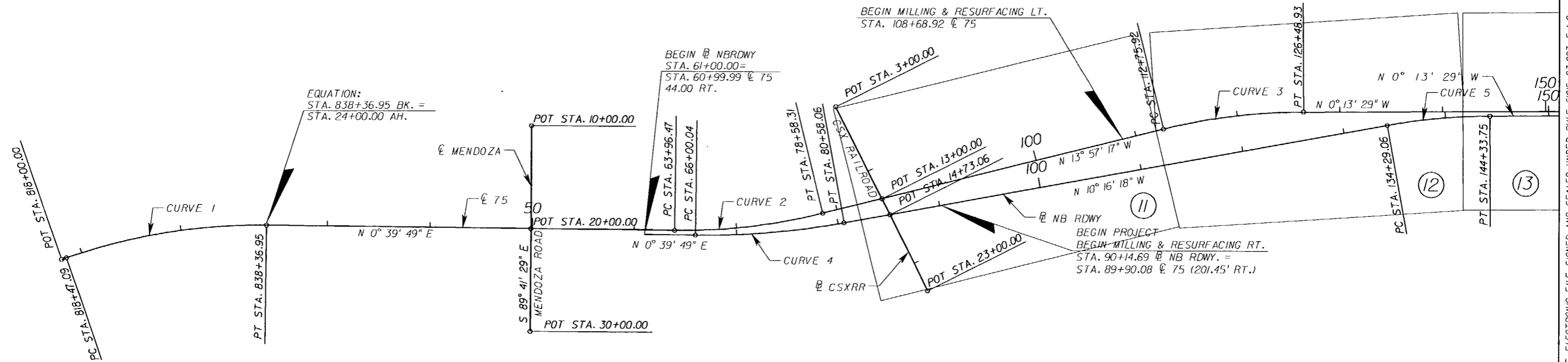
QUANTITIES FOR ESTIMATING PURPOSES ONLY

REVISIONS						ROADWAY ENGINEER OF RECORD: EDUARDO A. PONCE, P.E. (56818) FLORIDA DEPARTMENT OF TRANSPORTATION 801 N BROADWAY AVENUE P.O. BOX 1249 BARTON, FLORIDA 33830-3809/33831-1249	STATE OF FLORIDA DEPARTMENT OF TRANSPORTATION			SHEET NO. 6
DATE	BY	DESCRIPTION	DATE	BY	DESCRIPTION		ROAD NO.	COUNTY	FINANCIAL PROJECT ID	
						93	MANATEE	420253-1-52-01		

BENCHMARK DATA							
NUMBER	ELEVATION (FEET)	BASELINE	STATION	OFFSET (FEET)	STATE PLANE COORDINATES		DESCRIPTION
					NORTHING	EASTING	
BM 152	34.650	I-75	44+00.00	203' RT.	1,167,732	490,818	STD. 4" X 4" FDOT CM W/ BRASS DISK
BM 153	32.948	I-75	54+10.00	195' RT.	1,168,741	490,822	STD. 4" X 4" FDOT CM W/ BRASS DISK
BM 154	27.366	I-75	65+16.00	188' RT.	1,169,852	490,827	STD. 4" X 4" FDOT CM W/ BRASS DISK
BM 155	48.124	I-75	74+02.00	181' RT.	1,170,762	490,740	STD. 4" X 4" FDOT CM W/ BRASS DISK
BM I 75 R 23	62.765	I-75	83+98.00	210' RT.	1,171,753	490,543	FDOT BRASS DISK IN S. E. HEADWALL OF NORTHBOUND BRIDGE
BM 156	50.669	I-75	93+37.00	284' RT.	1,172,682	490,388	STD. 4" X 4" FDOT CM W/ BRASS DISK
BM 157	32.420	I-75	103+60.00	357' RT.	1,173,692	490,212	STD. 4" X 4" FDOT CM W/ BRASS DISK
BM 158	36.157	I-75	113+92.00	429' RT.	1,174,703	490,037	STD. 4" X 4" FDOT CM W/ BRASS DISK
BM I 75 S 23	37.458	I-75	122+01.00	423' RT.	1,175,442	489,918	FDOT BRASS DISK IN CONCRETE PIPE CULVERT
BM 159	33.915	I-75	132+14.00	299' RT.	1,176,421	489,774	STD. 4" X 4" FDOT CM W/ BRASS DISK
BM 160	28.696	I-75	142+25.00	218' RT.	1,177,431	489,688	STD. 4" X 4" FDOT CM W/ BRASS DISK
BM 161	24.937	I-75	151+34.00	135' RT.	1,178,340	489,602	STD. 4" X 4" FDOT CM W/ BRASS DISK
BM 162	19.321	I-75	61+44.00	233' RT.	1,179,350	489,696	STD. 4" X 4" FDOT CM W/ BRASS DISK
BM I 75 T 23	28.782	I-75	70+86.00	30' RT.	1,180,291	489,489	FDOT BRASS DISK IN GUARDRAIL
BM 163	21.596	I-75	80+63.00	68' RT.	1,181,269	489,524	STD. 4" X 4" FDOT CM W/ BRASS DISK
BM 164	23.553	I-75	91+17.00	158' RT.	1,182,278	489,708	STD. 4" X 4" FDOT CM W/ BRASS DISK
BM 165	29.143	I-75	101+42.00	176' RT.	1,183,186	490,072	STD. 4" X 4" FDOT CM W/ BRASS DISK
BM 166	25.451	I-75	110+90.00	338' RT.	1,183,890	490,705	STD. 4" X 4" FDOT CM W/ BRASS DISK
BM 167	24.662	I-75	120+98.00	230' RT.	1,184,797	491,158	STD. 4" X 4" FDOT CM W/ BRASS DISK
BM 168	24.626	I-75	131+06.00	121' RT.	1,185,704	491,612	STD. 4" X 4" FDOT CM W/ BRASS DISK
BM 169	23.814	I-75	17+63.00	207' RT.	1,186,610	492,335	STD. 4" X 4" FDOT CM W/ BRASS DISK
BM 170	32.862	I-75	27+38.00	110' RT.	1,187,416	492,878	STD. 4" X 4" FDOT CM W/ BRASS DISK
BM 171	50.357	I-75	37+61.00	75' RT.	1,188,221	493,511	STD. 4" X 4" FDOT CM W/ BRASS DISK
BM 172	23.386	I-75	48+23.00	244' RT.	1,188,925	494,324	STD. 4" X 4" FDOT CM W/ BRASS DISK
BM 173	22.474	I-75	57+69.00	274' RT.	1,189,629	494,957	STD. 4" X 4" FDOT CM W/ BRASS DISK
BM 174	22.751	I-75	67+15.00	305' RT.	1,190,333	495,589	STD. 4" X 4" FDOT CM W/ BRASS DISK
BM 175	24.155	I-75	76+82.00	201' RT.	1,191,139	496,132	STD. 4" X 4" FDOT CM W/ BRASS DISK
I 75 84 A 50	29.342	I-75	190+04.00	13' RT.	1,191,767	496,722	12" ROUND CM W/ FDOT BRASS DISK
BM 41 (1996)	8.711	I-75	134+28.00	44' RT.	1,188,851	481,536	STD. 4" X 4" FDOT CM W/ BRASS DISK
BM 38	22.093	I-75	125+61.00	47' RT.	1,185,867	481,453	STD. 4" X 4" FDOT CM W/ BRASS DISK

REVISIONS						ROADWAY ENGINEER OF RECORD: EDUARDO A. PONCE, P.E. (56818) FLORIDA DEPARTMENT OF TRANSPORTATION 801 N BROADWAY AVENUE P.O. BOX 1249 BARTOW, FLORIDA 33830-3809/33831-1249	STATE OF FLORIDA DEPARTMENT OF TRANSPORTATION			SHEET NO. 7
DATE	BY	DESCRIPTION	DATE	BY	DESCRIPTION		ROAD NO.	COUNTY	FINANCIAL PROJECT ID	
						93	MANATEE	420253-1-52-01		

1" = 1000'



CURVE 1
 PI STA. = 828+52.14
 DELTA = 19° 53' 55" (RT.)
 D = 1° 00' 00"
 T = 1,005.05
 L = 1,989.86
 R = 5,729.58
 PC STA. = 818+47.09
 PT STA. = 838+36.95
 e = 0.039

CURVE 2
 PI STA. = 71+31.38
 DELTA = 14° 37' 06" (LT.)
 D = 1° 00' 00"
 T = 734.91
 L = 1,461.84
 R = 5,729.58
 PC STA. = 63+96.47
 PT STA. = 78+58.31
 e = 0.039

CURVE 3
 PI STA. = 119+65.73
 DELTA = 13° 43' 48" (RT.)
 D = 1° 00' 00"
 T = 689.81
 L = 1,373.01
 R = 5,729.58
 PC STA. = 112+75.92
 PT STA. = 126+48.93
 e = 0.037

CURVE 4
 PI STA. = 73+31.27
 DELTA = 10° 56' 06" (LT.)
 D = 0° 45' 00"
 T = 731.23
 L = 1,458.02
 R = 7,639.44
 PC STA. = 66+00.04
 PT STA. = 80+58.06
 e = 0.029

CURVE 5
 PI STA. = 139+32.70
 DELTA = 10° 02' 49" (RT.)
 D = 1° 00' 00"
 T = 503.63
 L = 1,004.68
 R = 5,729.58
 PC STA. = 134+29.06
 PT STA. = 144+33.75
 e = 0.037

REVISIONS					
DATE	BY	DESCRIPTION	DATE	BY	DESCRIPTION

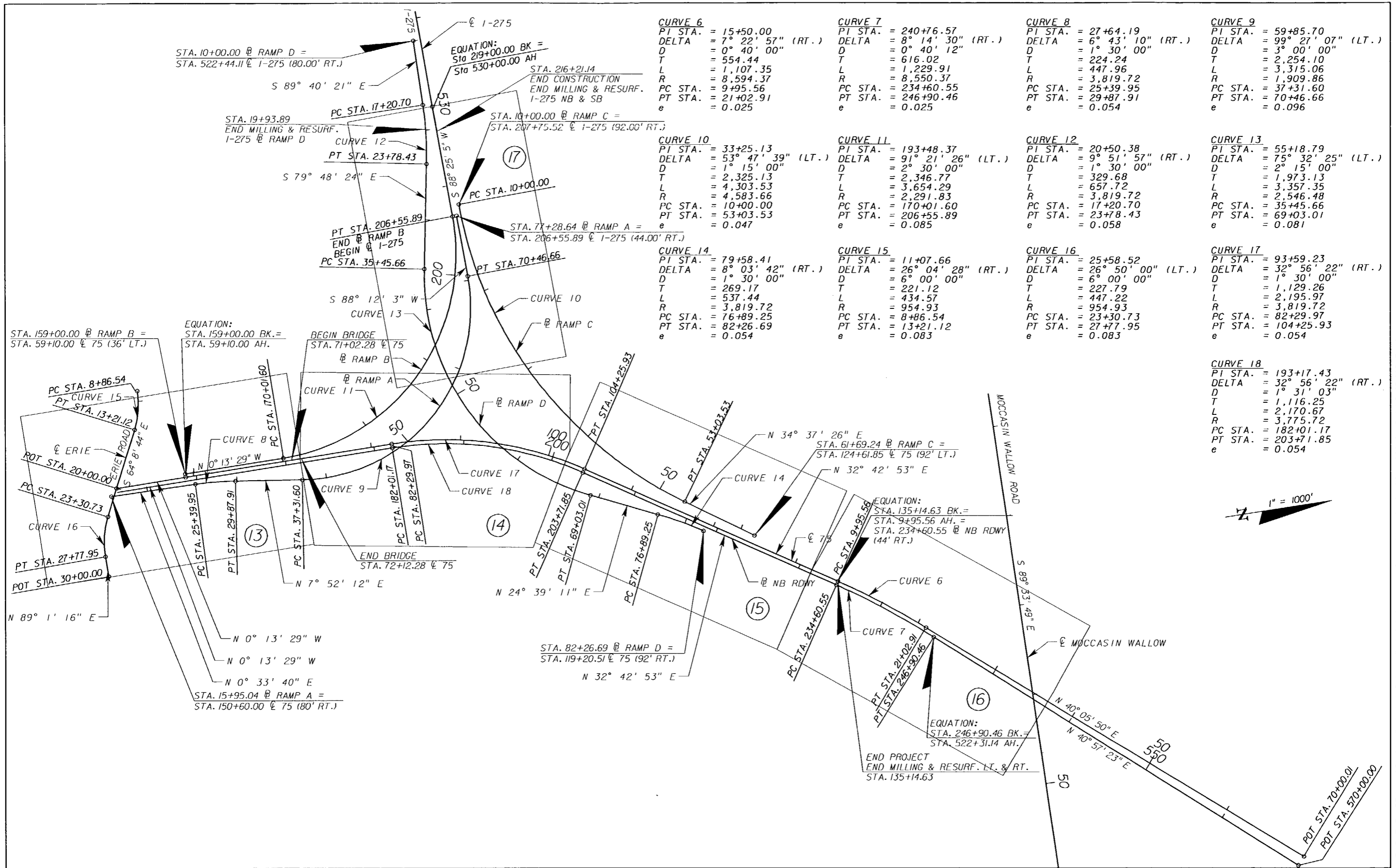
ROADWAY ENGINEER OF RECORD:
 EDUARDO A. PONCE, P.E. (56818)
 FLORIDA DEPARTMENT OF TRANSPORTATION
 801 N BROADWAY AVENUE
 P.O. BOX 1249
 BARTOW, FLORIDA 33830-3809/33831-1249

STATE OF FLORIDA DEPARTMENT OF TRANSPORTATION		
ROAD NO.	COUNTY	FINANCIAL PROJECT ID
93	MANATEE	420253-1-52-01

PROJECT LAYOUT

SHEET NO.
8

NOTICE: THE OFFICIAL RECORD OF THIS SHEET IS THE ELECTRONIC FILE SIGNED AND SEALED UNDER RULE 6105-23.003, F.A.C.



CURVE 6

PI STA.	= 15+50.00
DELTA	= 7° 22' 57" (RT.)
D	= 0° 40' 00"
T	= 554.44
L	= 1,107.35
R	= 8,594.37
PC STA.	= 9+95.56
PT STA.	= 21+02.91
e	= 0.025

CURVE 7

PI STA.	= 240+76.57
DELTA	= 8° 14' 30" (RT.)
D	= 0° 40' 12"
T	= 616.02
L	= 1,229.91
R	= 8,550.37
PC STA.	= 234+60.55
PT STA.	= 246+90.46
e	= 0.025

CURVE 8

PI STA.	= 27+64.19
DELTA	= 6° 43' 10" (RT.)
D	= 1° 30' 00"
T	= 224.24
L	= 447.96
R	= 3,819.72
PC STA.	= 25+39.95
PT STA.	= 29+87.91
e	= 0.054

CURVE 9

PI STA.	= 59+85.70
DELTA	= 99° 27' 07" (LT.)
D	= 3° 00' 00"
T	= 2,254.10
L	= 3,315.06
R	= 1,909.86
PC STA.	= 37+31.60
PT STA.	= 70+46.66
e	= 0.096

CURVE 10

PI STA.	= 33+25.13
DELTA	= 53° 47' 39" (LT.)
D	= 1° 15' 00"
T	= 2,325.13
L	= 4,303.53
R	= 4,583.66
PC STA.	= 10+00.00
PT STA.	= 53+03.53
e	= 0.047

CURVE 11

PI STA.	= 193+48.37
DELTA	= 91° 21' 26" (LT.)
D	= 2° 30' 00"
T	= 2,346.77
L	= 3,654.29
R	= 2,291.83
PC STA.	= 170+01.60
PT STA.	= 206+55.89
e	= 0.085

CURVE 12

PI STA.	= 20+50.38
DELTA	= 9° 51' 57" (RT.)
D	= 1° 30' 00"
T	= 329.68
L	= 657.72
R	= 3,819.72
PC STA.	= 17+20.70
PT STA.	= 23+78.43
e	= 0.058

CURVE 13

PI STA.	= 55+18.79
DELTA	= 75° 32' 25" (LT.)
D	= 2° 15' 00"
T	= 1,973.13
L	= 3,357.35
R	= 2,546.48
PC STA.	= 35+45.66
PT STA.	= 69+03.01
e	= 0.081

CURVE 14

PI STA.	= 79+58.41
DELTA	= 8° 03' 42" (RT.)
D	= 1° 30' 00"
T	= 269.17
L	= 537.44
R	= 3,819.72
PC STA.	= 76+89.25
PT STA.	= 82+26.69
e	= 0.054

CURVE 15

PI STA.	= 11+07.66
DELTA	= 26° 04' 28" (RT.)
D	= 6° 00' 00"
T	= 221.12
L	= 434.57
R	= 954.93
PC STA.	= 8+86.54
PT STA.	= 13+21.12
e	= 0.083

CURVE 16

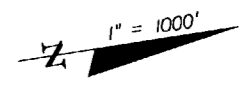
PI STA.	= 25+58.52
DELTA	= 26° 50' 00" (LT.)
D	= 6° 00' 00"
T	= 227.79
L	= 447.22
R	= 954.93
PC STA.	= 23+30.73
PT STA.	= 27+77.95
e	= 0.083

CURVE 17

PI STA.	= 93+59.23
DELTA	= 32° 56' 22" (RT.)
D	= 1° 30' 00"
T	= 1,129.26
L	= 2,195.97
R	= 3,819.72
PC STA.	= 82+29.97
PT STA.	= 104+25.93
e	= 0.054

CURVE 18

PI STA.	= 193+17.43
DELTA	= 32° 56' 22" (RT.)
D	= 1° 31' 03"
T	= 1,116.25
L	= 2,170.67
R	= 3,775.72
PC STA.	= 182+01.17
PT STA.	= 203+71.85
e	= 0.054



NOTICE: THE OFFICIAL RECORD OF THIS SHEET IS THE ELECTRONIC FILE SIGNED AND SEALED UNDER RULE 61G15-23.003, F.A.C.

REVISIONS						ROADWAY ENGINEER OF RECORD: EDUARDO A. PONCE, P.E. (56818) FLORIDA DEPARTMENT OF TRANSPORTATION 801 N BROADWAY AVENUE P.O. BOX 1249 BARTOW, FLORIDA 33830-3809/33831-1249	STATE OF FLORIDA DEPARTMENT OF TRANSPORTATION			PROJECT LAYOUT	SHEET NO. 9
DATE	BY	DESCRIPTION	DATE	BY	DESCRIPTION		ROAD NO.	COUNTY	FINANCIAL PROJECT ID		
						93	MANATEE	420253-1-52-01			

GENERAL NOTES

1. THE BENCH MARK DATUM IN PLANS IS BASED ON NGVD 1929.
2. ANY PUBLIC LAND CORNER WITHIN THE LIMITS OF CONSTRUCTION IS TO BE PROTECTED. IF A CORNER MONUMENT IS IN DANGER OF BEING DESTROYED AND HAS NOT BEEN PROPERLY REFERENCED, THE PROJECT ENGINEER SHOULD NOTIFY THE DISTRICT LOCATION SURVEYOR WITHOUT DELAY BY TELEPHONE.
3. EXISTING SUPERELEVATION RATES TO BE MAINTAINED UNLESS OTHERWISE SHOWN IN THE PLANS OR AS DIRECTED BY THE PROJECT ENGINEER.
4. DURING CONSTRUCTION, ANY MANHOLE WITH A TOP ELEVATION OF 1/2" OR MORE ABOVE THE ADJACENT PAVEMENT SHALL HAVE A TEMPORARY ASPHALT APRON CONSTRUCTED AS SHOWN IN INDEX 600. WHEN THE POSTED SPEED LIMIT IS 50 MPH OR LESS AND THE CONDITION IS EXPECTED TO LAST LESS THAN 24 HOURS, THE ENGINEER MAY WAIVE THE APRON REQUIREMENT. THIS REQUIREMENT MAY NOT BE WAIVED WHEN THE ELEVATION DIFFERENCE EXCEEDS ONE INCH.

THE SAME CRITERIA STATED ABOVE SHALL APPLY TO DIFFERENCES IN ELEVATION AT THE BEGINNING OR END OF ANY MILLING ACTIVITIES, AS WELL AS ANY LONGITUDINAL JOINTS WITHIN THE LIMITS OF SIGNALIZED INTERSECTIONS.

ALL OTHER DIFFERENCES IN ELEVATION, AS WELL AS REMOVAL AND PAYMENT FOR APRONS SHALL BE PER INDEX 600.
5. TRAFFIC SHALL NOT BE ALLOWED ON ANY MILLED SURFACE UNLESS SPECIFICALLY DESIGNATED OTHERWISE. THE CONTRACTOR MAY ONLY MILL THAT AMOUNT OF ROADWAY THAT CAN BE REPAVED IN A SINGLE DAY'S OPERATIONS.
6. EXISTING DRAINAGE STRUCTURES WITHIN THE CONSTRUCTION LIMITS SHALL REMAIN UNLESS OTHERWISE NOTED.

GENERAL NOTES FOR UTILITY ADJUSTMENTS

1. THE LOCATION (S) OF THE UTILITIES SHOWN IN THE PLANS (INCLUDING THOSE DESIGNATED V₁, V₂, AND V₃) ARE BASED ON LIMITED INVESTIGATION TECHNIQUES AND SHOULD BE CONSIDERED APPROXIMATE ONLY. THE VERIFIED LOCATION/ELEVATIONS APPLY ONLY AT THE POINTS SHOWN. INTERPOLATIONS BETWEEN THESE POINTS HAVE NOT BEEN VERIFIED.
2. EXISTING UTILITIES ARE TO REMAIN IN PLACE UNLESS OTHERWISE NOTED.
3. THE CONTRACTOR SHALL NOTIFY UTILITY OWNERS OF ANY EXCAVATION OR DEMOLITION ACTIVITY THROUGH SUNSHINE ONE-CALL OF FLORIDA, INC. (1-800-432-4770) AND SHALL ALSO NOTIFY THOSE UTILITY OWNERS/AGENCIES LISTED WITHIN OR IMPACTED BY THESE PLANS, NOT LESS THAN TWO (2) FULL BUSINESS DAYS IN ADVANCE OF THE BEGINNING OF CONSTRUCTION ON THE JOB SITE.

UTILITY OWNERS/AGENCIES		
UTILITY OWNERS	CONTACT	PHONE
BRIGHT HOUSE NETWORKS	TOM WRIGHT	(941) 748-3816 Ext: 21648
FLORIDA POWER & LIGHT	GREG COKER	(941) 723-4444
VERIZON FLORIDA, INC.	DENISE HUTTON	(941) 906-6722
MANATEE COUNTY UTILITY OPERATIONS	HOWARD LEYO	(941) 708-7450 Ext: 7368
PEACE RIVER ELECTRIC COOP.	TOM WINGO	N/A
FLORIDA POWER & LIGHT	NEELESH SHAH	(561) 694-3507
FLORIDA POWER & LIGHT	NOEL REESE	(305) 552-3249

CONSTRUCTION PRECAUTIONS FOR THE EASTERN INDIGO SNAKE

THE EASTERN INDIGO SNAKE (DRYMARCHON CORAIS COUPERI) COULD BE PRESENT IN THE PROJECT AREA. IN ORDER TO MINIMIZE HARM TO THIS SPECIES, THE FDOT HAS COMMITTED TO IMPLEMENT THE FOLLOWING PROTECTION MEASURES:

- A. PROVIDE EASTERN INDIGO SNAKE EDUCATIONAL INFORMATION TO EMPLOYEES PRIOR TO THE INITIATION OF ANY CLEARING OR CONSTRUCTION ACTIVITIES. AN EDUCATIONAL EXHIBIT THAT HAS BEEN APPROVED BY USFWS SHALL BE POSTED CONSPICUOUSLY AT A SITE ACCESSIBLE TO ALL EMPLOYEES AND A HANDOUT WILL BE DISTRIBUTED TO EMPLOYEES.
- B. THE CONTRACTOR SHALL POST AND DISTRIBUTE EDUCATIONAL INFORMATION TO ALL ITS WORKERS. THE EXHIBIT AND BROCHURES SHALL INCLUDE PHOTOGRAPHS OF THE EASTERN INDIGO SNAKE, INFORMATION ON LIFE HISTORY, AND LEGAL PROTECTION OF THE SPECIES IN FLORIDA, AND HOW TO AVOID IMPACTS TO THE SPECIES. THIS MATERIAL SHALL BE SUPPLIED TO THE CONTRACTOR BY THE CONSTRUCTION ENVIRONMENTAL LIAISON AT THE PRE-CONSTRUCTION CONFERENCE.

THE CONTRACTOR, IN COORDINATION WITH THE FDOT CONSTRUCTION PROJECT MANAGER, SHALL ALSO BE RESPONSIBLE FOR DEVELOPING AND CARRYING OUT ANY MANAGEMENT PLAN(S)/AGREEMENT(S) WITH APPROPRIATE REGULATORY AGENCIES DUE TO THE OCCURENCE OF UNEXPECTED SPECIES. SUCH SPECIES OR ANY OTHER PROTECTED SPECIES NOT MENTIONED ABOVE THAT ARE IDENTIFIED DURING THE CONSTRUCTION OF THE PROJECT WHICH WAS NOT PREVIOUSLY IDENTIFIED DURING THE PRE-CONSTRUCTION SURVEY. THE MANAGEMENT PLAN(S)/AGREEMENT(S) WOULD ALLOW FOR CONSTRUCTION

TO OCCUR THAT DOES NOT "ADVERSELY AFFECT OR JEOPARDIZE" THE SPECIES IN ACCORDANCE WITH THE ENDANGERED SPECIES ACT. THE CONTRACTOR, IN COORDINATION WITH THE FDOT CONSTRUCTION PROJECT MANAGER, SHALL ALSO BE RESPONSIBLE FOR MAKING ANY MODIFICATIONS TO THE PROPOSED MANAGEMENT PLAN(S)/AGREEMENT(S) TO ASSURE LISTED SPECIES REMAIN UNAFFECTED WITH THE APPROPRIATE REGULATORY AGENCIES.

CONSTRUCTION PRECAUTIONS FOR THE FLORIDA SANDHILL CRANE

THE PROJECT EXISTS IN AN AREA POTENTIALLY UTILIZED BY NESTING SANDHILL CRANES. THE CONTRACTOR MUST HAVE A QUALIFIED BIOLOGIST, APPROVED BY FDOT, TO LOCATE ANY ACTIVE SANDHILL CRANE NEST(S) WITHIN THE VICINITY OF THE PROJECT LIMITS PRIOR TO COMMENCEMENT OF AND THROUGHOUT THE DURATION OF ANY CONSTRUCTION.

NO CONSTRUCTION IS TO OCCUR WITHIN 400 FEET OF THE SANDHILL CRANE NEST(S) LOCATION DURING THE INITIAL AND SUBSEQUENT NESTING SEASONS (JANUARY THROUGH JULY). IF AN ACTIVE CRANE NEST(S) IS LOCATED WITHIN 400 FEET OF THE PROJECT LIMITS, THE CONTRACTOR, IN COORDINATION WITH THE FDOT CONSTRUCTION PROJECT MANAGER, SHALL CONTACT THE FLORIDA FISH AND WILDLIFE CONSERVATION COMMISSION IMMEDIATELY FOR FURTHER INSTRUCTION. CONSTRUCTION ACTIVITIES WITHIN 400 FEET OF THE NEST SHALL CEASE UNTIL APPROVAL IS RECEIVED FROM THE FDOT CONSTRUCTION PROJECT MANAGER. IT WILL BE THE CONTRACTOR'S RESPONSIBILITY TO PERFORM ANY ADDITIONAL MONITORING OR OTHER ACTIVITIES REQUIRED BY THE WILDLIFE AGENCY AT THEIR OWN EXPENSE.

THE CONTRACTOR SHALL INCLUDE ALL COSTS ASSOCIATED WITH CONSTRUCTION SEQUENCING TO AVOID ACTIVE NEST SITES AND MONITORING OF NEST SITES IN THEIR LUMP SUM BID FOR THIS PROJECT.

THE CONTRACTOR, IN COORDINATION WITH THE FDOT CONSTRUCTION PROJECT MANAGER, SHALL ALSO BE RESPONSIBLE FOR DEVELOPING AND CARRYING OUT ANY MANAGEMENT PLAN(S)/AGREEMENT(S) WITH APPROPRIATE REGULATORY AGENCIES DUE TO THE OCCURRENCE OF UNEXPECTED SPECIES. SUCH SPECIES ARE ANY OTHER PROTECTED SPECIES NOT MENTIONED ABOVE THAT ARE IDENTIFIED DURING THE CONSTRUCTION OF THE PROJECT WHICH WERE NOT PREVIOUSLY IDENTIFIED DURING THE PRE-CONSTRUCTION SURVEY. THE MANAGEMENT PLAN(S)/AGREEMENT(S) WOULD ALLOW FOR CONSTRUCTION TO OCCUR THAT DOES NOT "ADVERSELY AFFECT OR JEOPARDIZE" THE SPECIES IN ACCORDANCE WITH THE ENDANGERED SPECIES ACT. THE CONTRACTOR, IN COORDINATION WITH THE FDOT CONSTRUCTION PROJECT MANAGER, SHALL ALSO BE RESPONSIBLE FOR MAKING ANY MODIFICATIONS TO THE PROPOSED MANAGEMENT PLAN(S)/AGREEMENT(S) TO ASSURE LISTED SPECIES REMAIN UNAFFECTED WITH THE APPROPRIATE REGULATORY AGENCIES.

CONSTRUCTION PRECAUTIONS FOR THE BALD EAGLE

THE PROJECT EXISTS IN AN AREA POTENTIALLY UTILIZED BY NESTING BALD EAGLES. A REVIEW OF THE INFORMATION FOUND ON THE FLORIDA FISH AND WILDLIFE CONSERVATION COMMISSION WEB SITE <http://wld.fwc.state.fl.us/eagle/eaglenests/MAY> INDICATE EAGLE NESTS.

THE CONTRACTOR MUST HAVE A QUALIFIED BIOLOGIST APPROVED BY THE FDOT LOCATE ANY ACTIVE NEST SITE(S) THAT MAY EXIST IN THE PROJECT VICINITY, PRIOR TO COMMENCEMENT OF AND THROUGHOUT THE DURATION OF ANY CONSTRUCTION.

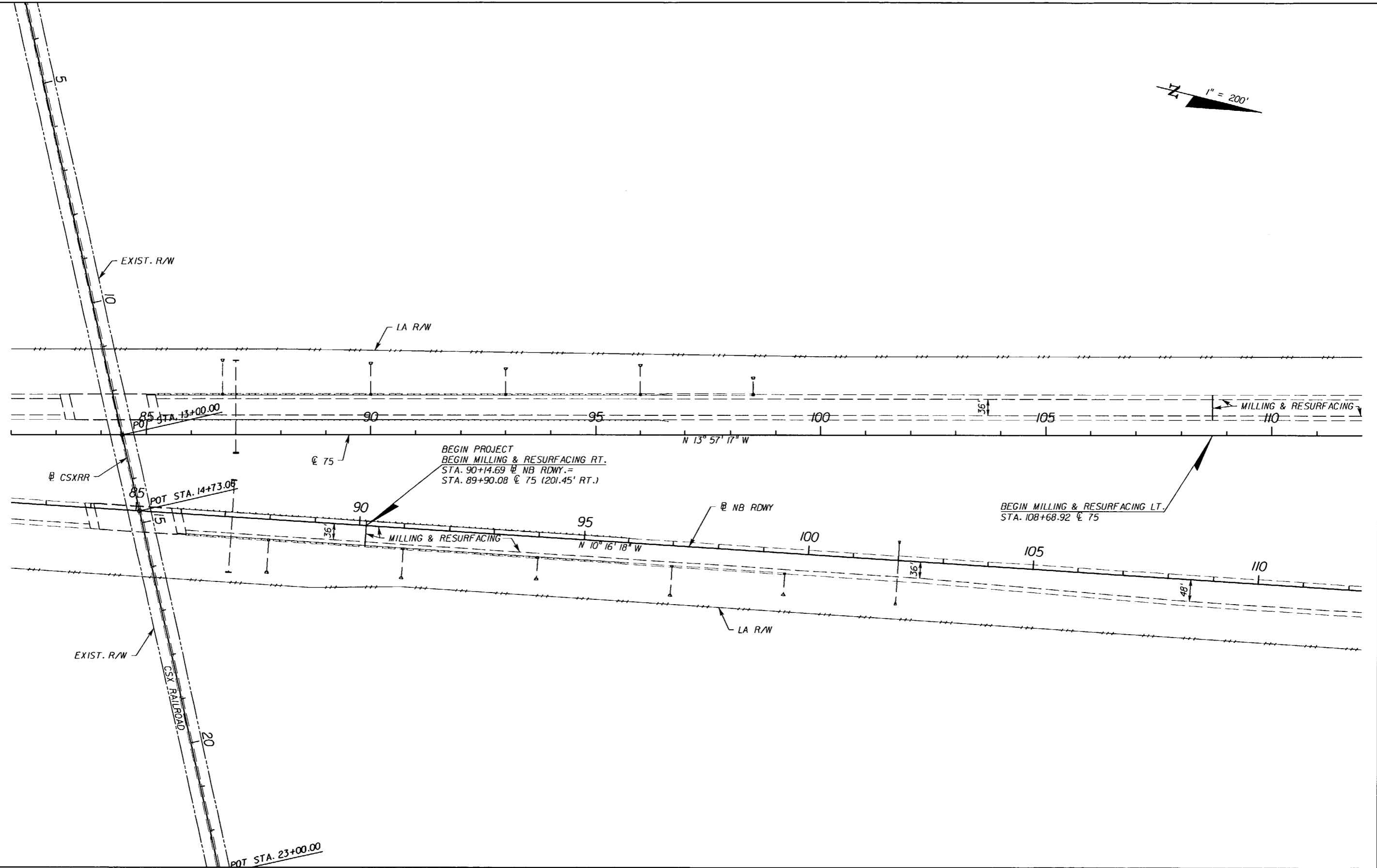
NO CONSTRUCTION ACTIVITIES WILL OCCUR DURING THE NESTING SEASON WITHIN THE 0' TO 330' AND 660' BUFFER WILL EITHER OCCUR OUTSIDE OF NESTING SEASON OR A QUALIFIED BIOLOGIST, APPROVED BY THE FDOT, WILL MONITOR THE NEST IF CONSTRUCTION ACTIVITY OCCURS DURING NESTING SEASON. THE NEST(S) LOCATION(S) WILL BE MONITORED BASED ON THE U.S. FISH AND WILDLIFE SERVICE'S BALD EAGLE MONITORING GUIDELINES (SEPTEMBER 2005). THE NESTING SEASON IS CONSIDERED TO OCCUR FROM OCTOBER 1 THROUGH MAY 15. ALL CONSTRUCTION ACTIVITIES WILL IMMEDIATELY CEASE IF OBSERVATIONS INDICATE THAT CONSTRUCTION ACTIVITIES ARE DISTURBING NESTING EAGLES AT ANY TIME. WORK WILL NOT RESUME UNTIL APPROVAL IS RECEIVED FROM THE FDOT CONSTRUCTION PROJECT MANAGER AND THE U.S. FISH AND WILDLIFE SERVICE.

IF THE CONTRACTOR DESIRES TO MODIFY THE ABOVE CONDITION IN ANY WAY, IT IS THE CONTRACTOR'S RESPONSIBILITY TO COORDINATE WITH THE FDOT CONSTRUCTION PROJECT MANAGER PRIOR TO INITIATION OF COORDINATION WITH THE U.S. FISH AND WILDLIFE SERVICE AND RECEIVE WRITTEN CONFIRMATION OF ANY MODIFICATIONS TO THESE BALD EAGLE RESTRICTIONS. IT WILL BE THE CONTRACTOR'S RESPONSIBILITY TO PERFORM ANY MONITORING OR OTHER ACTIVITIES REQUIRED BY THE AGENCY AT THEIR OWN EXPENSE.

THE CONTRACTOR SHALL INCLUDE ALL COSTS ASSOCIATED WITH CONSTRUCTION SEQUENCING TO AVOID ACTIVE NEST SITES AND MONITORING OF NEST SITES IN THEIR LUMP SUM BID FOR THIS PROJECT.

THE CONTRACTOR, IN COORDINATION WITH THE FDOT CONSTRUCTION PROJECT MANAGER, SHALL ALSO BE RESPONSIBLE FOR DEVELOPING AND CARRYING OUT ANY MANAGEMENT PLAN(S)/AGREEMENT(S) WITH APPROPRIATE REGULATORY AGENCIES DUE TO THE OCCURRENCE OF UNEXPECTED SPECIES. SUCH SPECIES ARE ANY OTHER PROTECTED SPECIES NOT MENTIONED ABOVE THAT ARE IDENTIFIED DURING THE CONSTRUCTION OF THE PROJECT WHICH WERE NOT PREVIOUSLY IDENTIFIED DURING THE PRE-CONSTRUCTION SURVEY. THE MANAGEMENT PLAN(S)/AGREEMENT(S) WOULD ALLOW FOR CONSTRUCTION TO OCCUR THAT DOES NOT "ADVERSELY AFFECT OR JEOPARDIZE" THE SPECIES IN ACCORDANCE WITH THE ENDANGERED SPECIES ACT. THE CONTRACTOR, IN COORDINATION WITH THE FDOT CONSTRUCTION PROJECT MANAGER, SHALL ALSO BE RESPONSIBLE FOR MAKING ANY MODIFICATIONS TO THE PROPOSED MANAGEMENT PLAN(S)/AGREEMENT(S) TO ASSURE LISTED SPECIES REMAIN UNAFFECTED WITH THE APPROPRIATE REGULATORY AGENCIES.

REVISIONS				ROADWAY ENGINEER OF RECORD: EDUARDO A. PONCE, P.E. (56818) FLORIDA DEPARTMENT OF TRANSPORTATION 801 N BROADWAY AVENUE P.O. BOX 1249 BARTOW, FLORIDA 33830-3809/33831-1249	STATE OF FLORIDA DEPARTMENT OF TRANSPORTATION			SHEET NO. 10
DATE	DESCRIPTION	DATE	DESCRIPTION		ROAD NO.	COUNTY	FINANCIAL PROJECT ID	
					93	MANATEE	420253-1-52-01	



NOTICE: THE OFFICIAL RECORD OF THIS SHEET IS THE ELECTRONIC FILE SIGNED AND SEALED UNDER RULE 60G5-23.003, F.A.C.

REVISIONS					
DATE	BY	DESCRIPTION	DATE	BY	DESCRIPTION

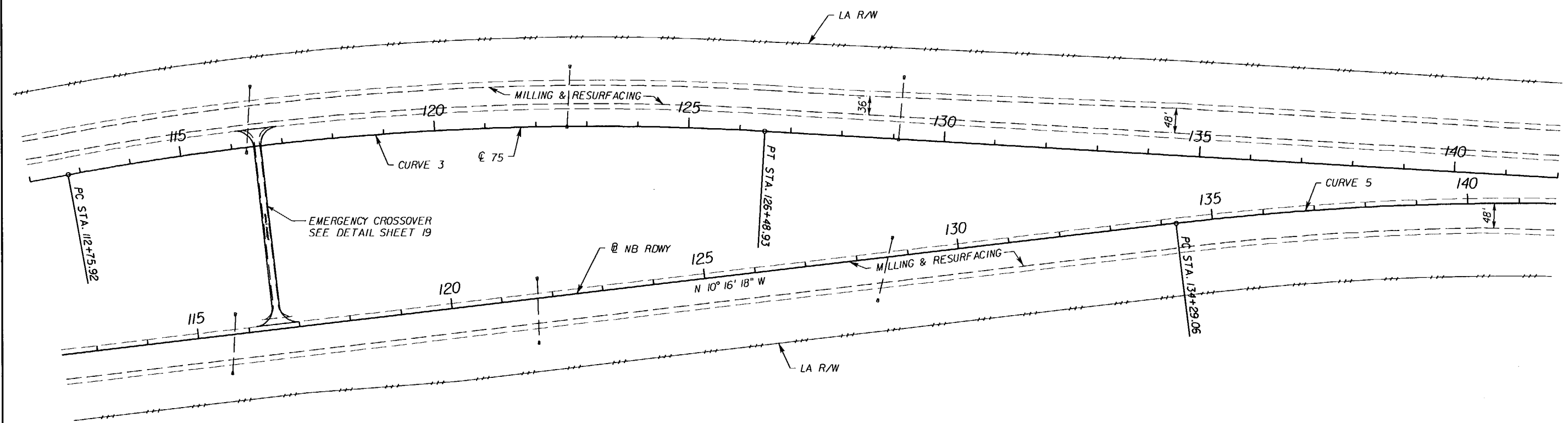
ROADWAY ENGINEER OF RECORD:
 EDUARDO A. PONCE, P.E. (5681B)
 FLORIDA DEPARTMENT OF TRANSPORTATION
 801 N BROADWAY AVENUE
 P.O. BOX 1249
 BARTON, FLORIDA 33830-3809/33831-1249

STATE OF FLORIDA DEPARTMENT OF TRANSPORTATION		
ROAD NO.	COUNTY	FINANCIAL PROJECT ID
93	MANATEE	420253-1-52-01

ROADWAY PLAN SHEET

SHEET NO.
II

1" = 200'

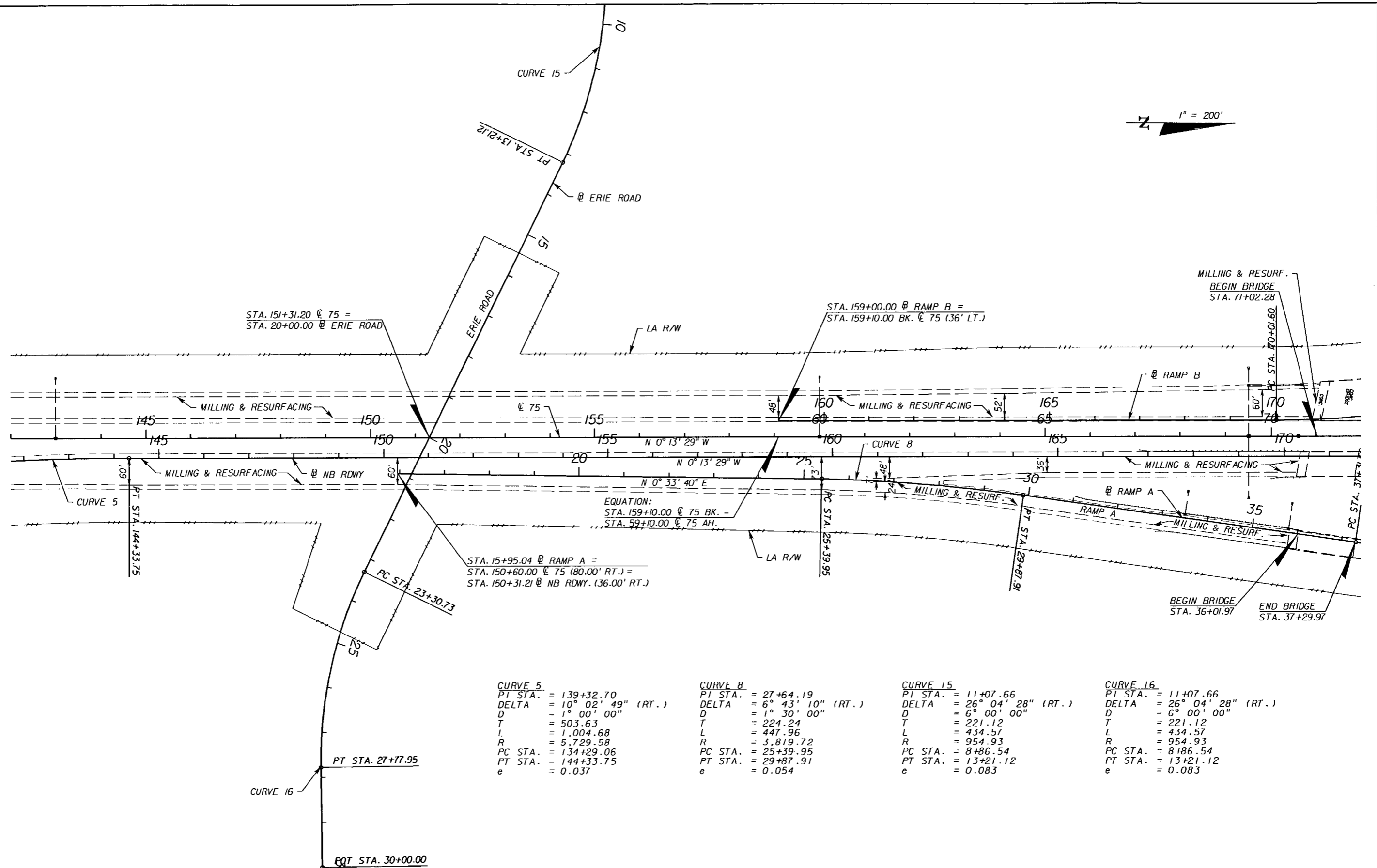
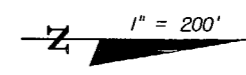


CURVE 3
 PI STA. = 119+65.73
 DELTA = 13° 43' 48" (RT.)
 D = 1° 00' 00"
 T = 689.81
 L = 1,373.01
 R = 5,729.58
 PC STA. = 112+75.92
 PT STA. = 126+48.93
 e = 0.037

CURVE 5
 PI STA. = 139+32.70
 DELTA = 10° 02' 49" (RT.)
 D = 1° 00' 00"
 T = 503.63
 L = 1,004.68
 R = 5,729.58
 PC STA. = 134+29.06
 PT STA. = 144+33.75
 e = 0.037

REVISIONS						ROADWAY ENGINEER OF RECORD: EDUARDO A. PONCE, P.E. (56818) FLORIDA DEPARTMENT OF TRANSPORTATION 801 N BROADWAY AVENUE P.O. BOX 1249 BARTON, FLORIDA 33830-3809/33831-1249	STATE OF FLORIDA DEPARTMENT OF TRANSPORTATION			ROADWAY PLAN SHEET	SHEET NO. 12
DATE	BY	DESCRIPTION	DATE	BY	DESCRIPTION		ROAD NO.	COUNTY	FINANCIAL PROJECT ID		
							93	MANATEE	420253-1-52-01		

NOTICE: THE OFFICIAL RECORD OF THIS SHEET IS THE ELECTRONIC FILE SIGNED AND SEALED UNDER RULE 6615-23.003, F.A.C.



CURVE 5
 PI STA. = 139+32.70
 DELTA = 10° 02' 49" (RT.)
 D = 1° 00' 00"
 T = 503.63
 L = 1,004.68
 R = 5,729.58
 PC STA. = 134+29.06
 PT STA. = 144+33.75
 e = 0.037

CURVE 8
 PI STA. = 27+64.19
 DELTA = 6° 43' 10" (RT.)
 D = 1° 30' 00"
 T = 224.24
 L = 447.96
 R = 3,819.72
 PC STA. = 25+39.95
 PT STA. = 29+87.91
 e = 0.054

CURVE 15
 PI STA. = 11+07.66
 DELTA = 26° 04' 28" (RT.)
 D = 6° 00' 00"
 T = 221.12
 L = 434.57
 R = 954.93
 PC STA. = 8+86.54
 PT STA. = 13+21.12
 e = 0.083

CURVE 16
 PI STA. = 11+07.66
 DELTA = 26° 04' 28" (RT.)
 D = 6° 00' 00"
 T = 221.12
 L = 434.57
 R = 954.93
 PC STA. = 8+86.54
 PT STA. = 13+21.12
 e = 0.083

REVISIONS					
DATE	BY	DESCRIPTION	DATE	BY	DESCRIPTION

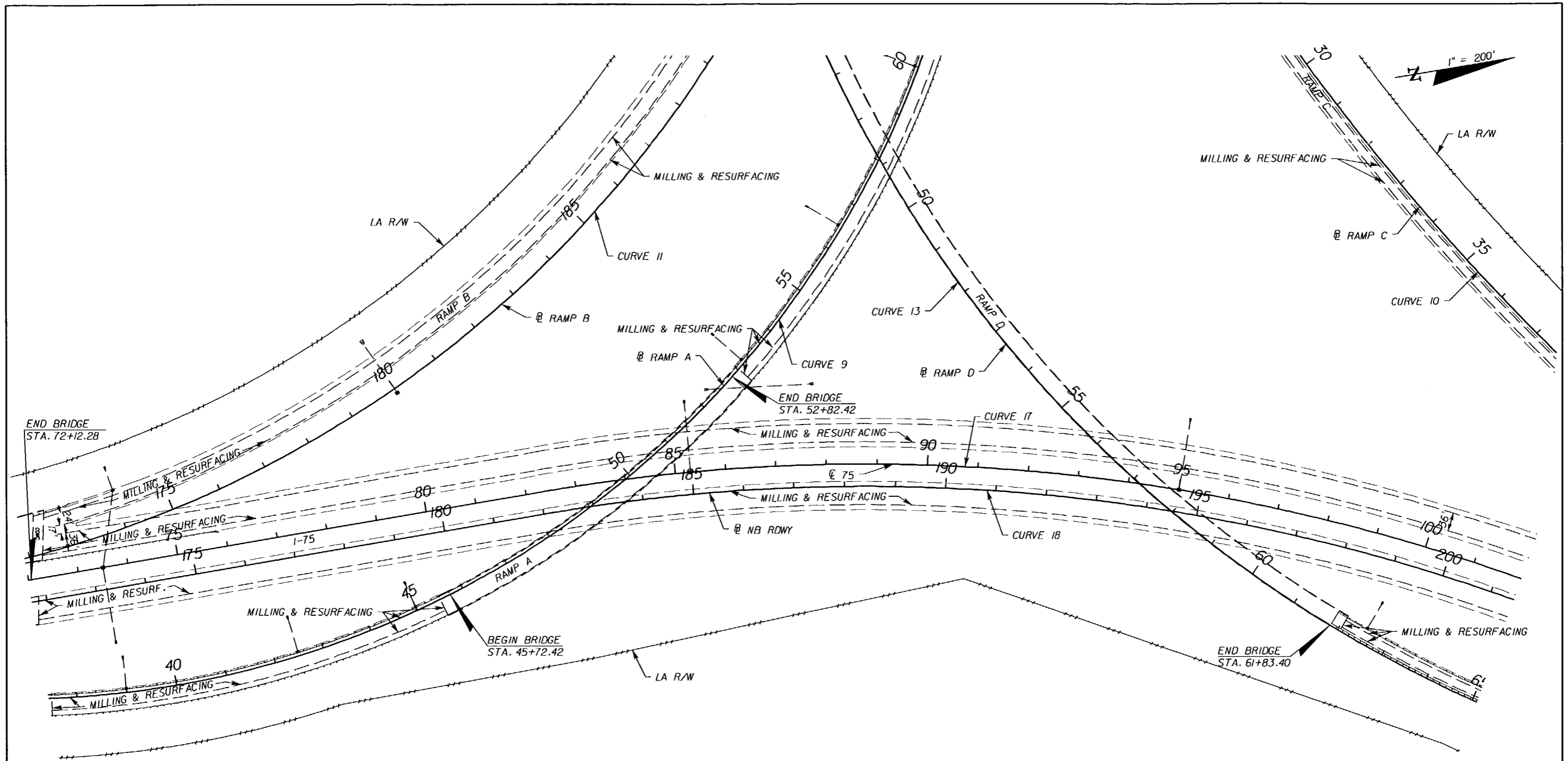
ROADWAY ENGINEER OF RECORD:
 EDUARDO A. PONCE, P.E. (56818)
 FLORIDA DEPARTMENT OF TRANSPORTATION
 801 N BROADWAY AVENUE
 P.O. BOX 1249
 BARTON, FLORIDA 33830-3809/33831-1249

STATE OF FLORIDA DEPARTMENT OF TRANSPORTATION		
ROAD NO.	COUNTY	FINANCIAL PROJECT ID
93	MANATEE	420253-1-52-01

ROADWAY PLAN SHEET

SHEET NO.
13

NOTICE: THE OFFICIAL RECORD OF THIS SHEET IS THE ELECTRONIC FILE SIGNED AND SEALED UNDER RULE 61G15-23.003, F.A.C.



CURVE 9
 PI STA. = 59+85.70
 DELTA = 99° 27' 07" (LT.)
 D = 3° 00' 00"
 T = 2,254.10
 L = 3,315.06
 R = 1,909.86
 PC STA. = 37+31.60
 PT STA. = 70+46.66
 e = 0.096

CURVE 10
 PI STA. = 33+25.13
 DELTA = 53° 47' 39" (LT.)
 D = 1° 15' 00"
 T = 2,325.13
 L = 4,303.53
 R = 4,583.66
 PC STA. = 10+00.00
 PT STA. = 53+03.53
 e = 0.047

CURVE 11
 PI STA. = 193+48.37
 DELTA = 91° 21' 26" (LT.)
 D = 2° 30' 00"
 T = 2,346.77
 L = 3,654.29
 R = 2,291.83
 PC STA. = 170+01.60
 PT STA. = 206+55.89
 e = 0.085

CURVE 13
 PI STA. = 55+18.79
 DELTA = 75° 32' 25" (LT.)
 D = 2° 15' 00"
 T = 1,973.13
 L = 3,357.35
 R = 2,546.48
 PC STA. = 35+45.66
 PT STA. = 69+03.01
 e = 0.081

CURVE 17
 PI STA. = 93+59.23
 DELTA = 32° 56' 22" (LT.)
 D = 1° 30' 00"
 T = 1,129.26
 L = 2,195.97
 R = 3,819.72
 PC STA. = 82+29.97
 PT STA. = 104+25.93
 e = 0.054

CURVE 18
 PI STA. = 193+17.43
 DELTA = 32° 56' 22" (LT.)
 D = 1° 31' 03"
 T = 1,116.25
 L = 2,170.67
 R = 3,775.72
 PC STA. = 182+01.17
 PT STA. = 203+71.85
 e = 0.054

REVISIONS					
DATE	BY	DESCRIPTION	DATE	BY	DESCRIPTION

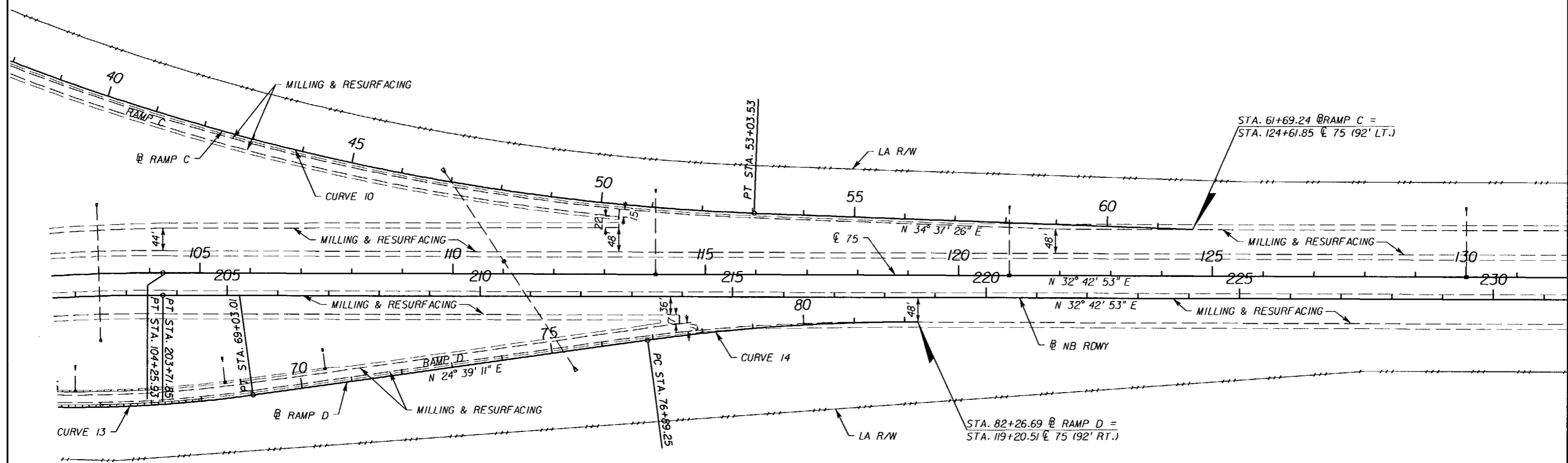
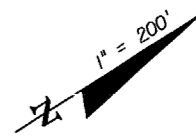
ROADWAY ENGINEER OF RECORD:
 EDUARDO A. PONCE, P.E. (156818)
 FLORIDA DEPARTMENT OF TRANSPORTATION
 801 N BROADWAY AVENUE
 P.O. BOX 1249
 BARTON, FLORIDA 33830-3809/33831-1249

STATE OF FLORIDA DEPARTMENT OF TRANSPORTATION		
ROAD NO.	COUNTY	FINANCIAL PROJECT ID
93	MANATEE	420253-1-52-01

ROADWAY PLAN SHEET

SHEET NO.
14

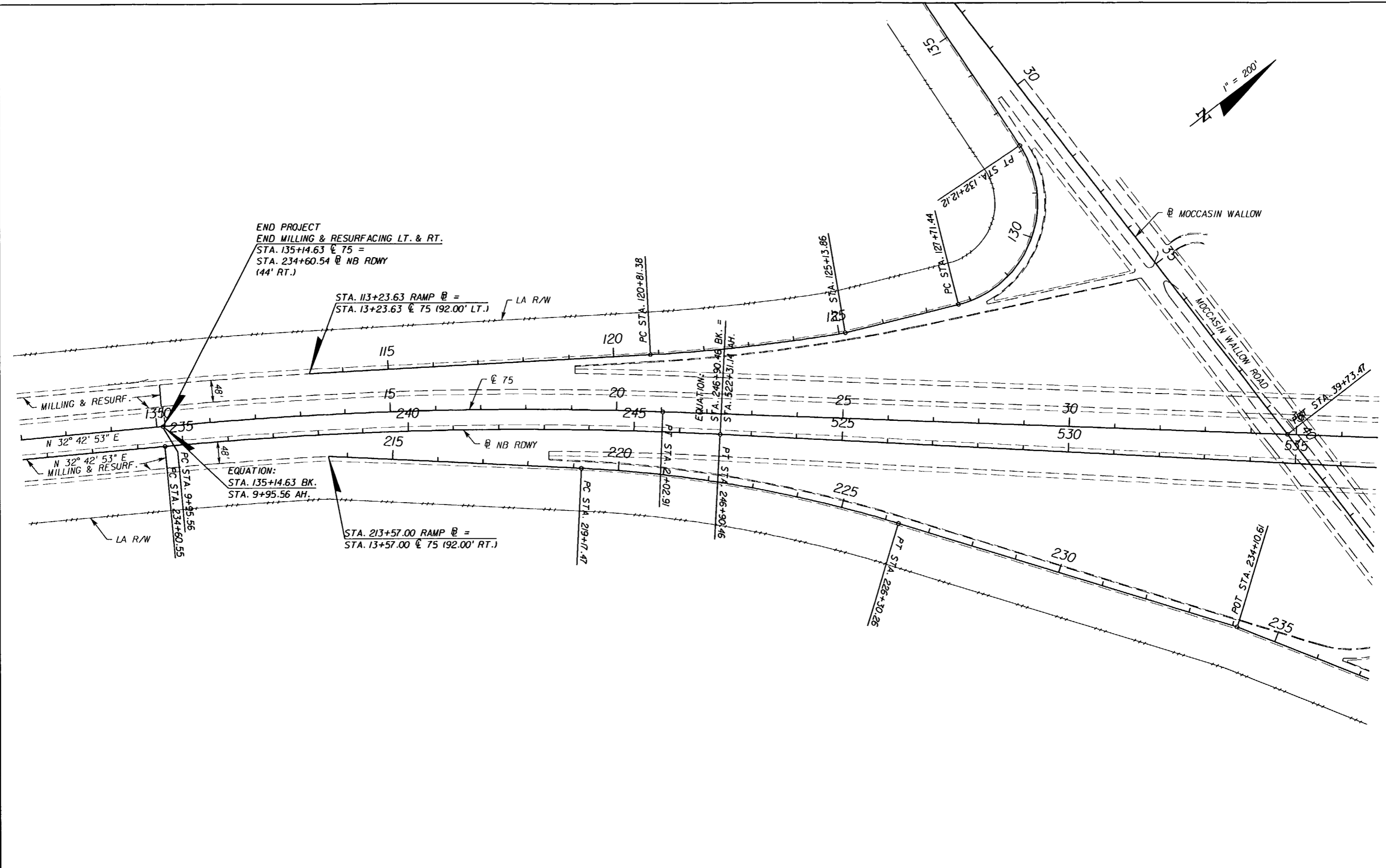
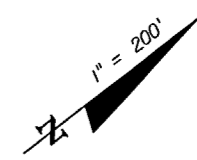
NOTICE: THE OFFICIAL RECORD OF THIS SHEET IS THE ELECTRONIC FILE SIGNED AND SEALED UNDER RULE 61G15-23.003, F.A.C.



CURVE 10 PI STA. = 33+25.13 DELTA = 53° 47' 39" (LT.) D = 1° 15' 00" T = 2,325.13 L = 4,303.53 R = 4,583.66 PC STA. = 10+00.00 PT STA. = 53+03.53 e = 0.047	CURVE 13 PI STA. = 55+18.79 DELTA = 75° 32' 25" (LT.) D = 2° 15' 00" T = 1,973.13 L = 3,357.35 R = 2,546.48 PC STA. = 35+45.66 PT STA. = 69+03.01 e = 0.081	CURVE 14 PI STA. = 79+58.41 DELTA = 8° 03' 42" (RT.) D = 1° 30' 00" T = 269.17 L = 537.44 R = 3,819.72 PC STA. = 76+89.25 PT STA. = 82+26.69 e = 0.054
---	---	--

NOTICE: THE OFFICIAL RECORD OF THIS SHEET IS THE ELECTRONIC FILE SIGNED AND SEALED UNDER RULE 6105-23.003, F.A.C.

REVISIONS						ROADWAY ENGINEER OF RECORD: EDUARDO A. PONCE, P.E. (56818) FLORIDA DEPARTMENT OF TRANSPORTATION 801 N BROADWAY AVENUE P.O. BOX 1249 BARTON, FLORIDA 33830-3809/33831-1249	STATE OF FLORIDA DEPARTMENT OF TRANSPORTATION			ROADWAY PLAN SHEET	SHEET NO.
DATE	BY	DESCRIPTION	DATE	BY	DESCRIPTION		ROAD NO.	COUNTY	FINANCIAL PROJECT ID		15
						93	MANATEE	420253-1-52-01			



END PROJECT
 END MILLING & RESURFACING LT. & RT.
 STA. 135+14.63 @ 75 =
 STA. 234+60.54 @ NB RDWY
 (44' RT.)

STA. 113+23.63 RAMP @ =
 STA. 13+23.63 @ 75 (92.00' LT.)

EQUATION:
 STA. 135+14.63 BK.
 STA. 9+95.56 AH.

STA. 213+57.00 RAMP @ =
 STA. 13+57.00 @ 75 (92.00' RT.)

REVISIONS					
DATE	BY	DESCRIPTION	DATE	BY	DESCRIPTION
		LA R/W			

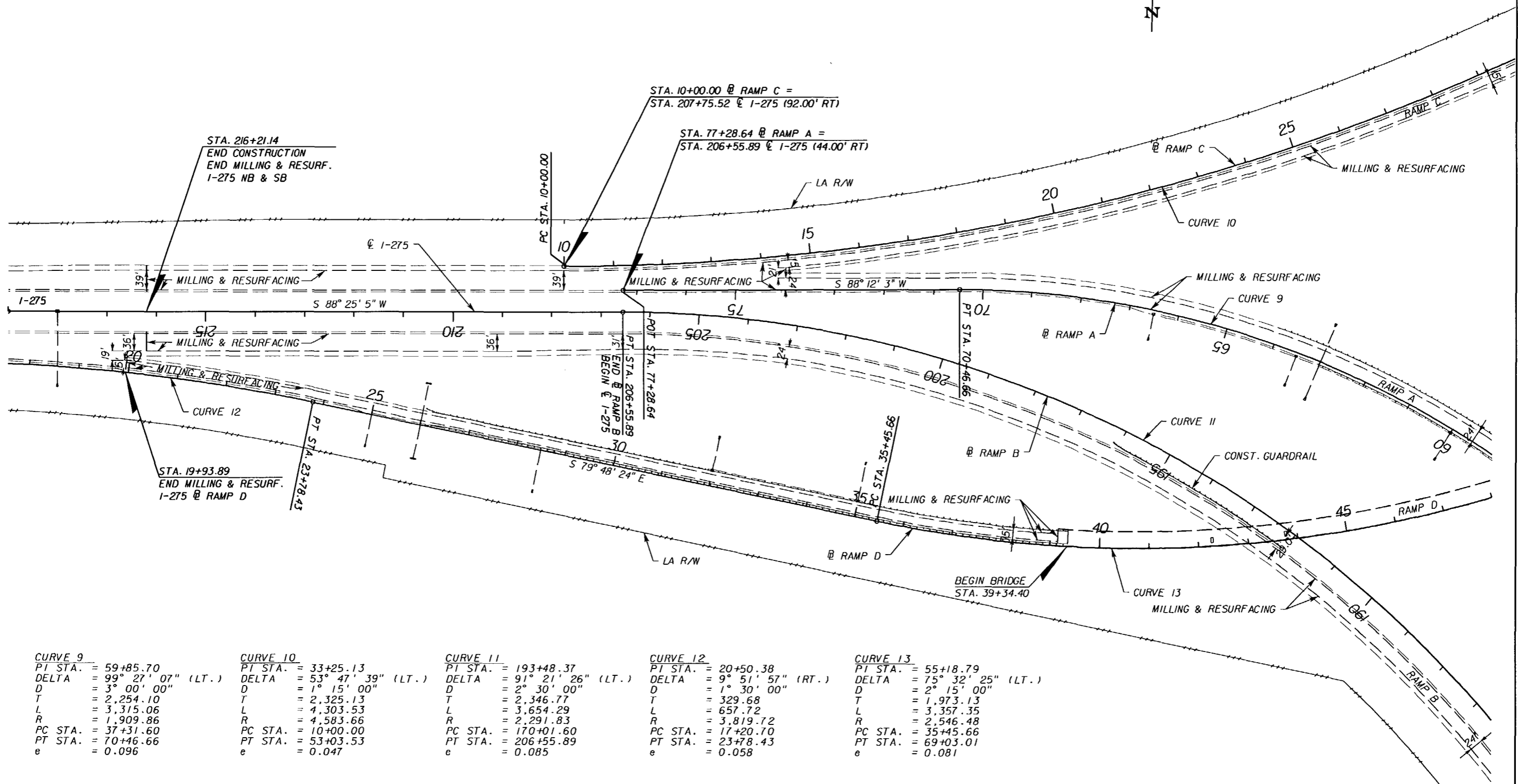
ROADWAY ENGINEER OF RECORD:
 EDUARDO A. PONCE, P.E. (156818)
 FLORIDA DEPARTMENT OF TRANSPORTATION
 801 N BROADWAY AVENUE
 P.O. BOX 1249
 BARTON, FLORIDA 33830-3809/33831-1249

STATE OF FLORIDA DEPARTMENT OF TRANSPORTATION		
ROAD NO.	COUNTY	FINANCIAL PROJECT ID
93	MANATEE	420253-1-52-01

ROADWAY PLAN SHEET

SHEET NO.
16

NOTICE: THE OFFICIAL RECORD OF THIS SHEET IS THE ELECTRONIC FILE SIGNED AND SEALED UNDER RULE 61G15-23.003, F.A.C.



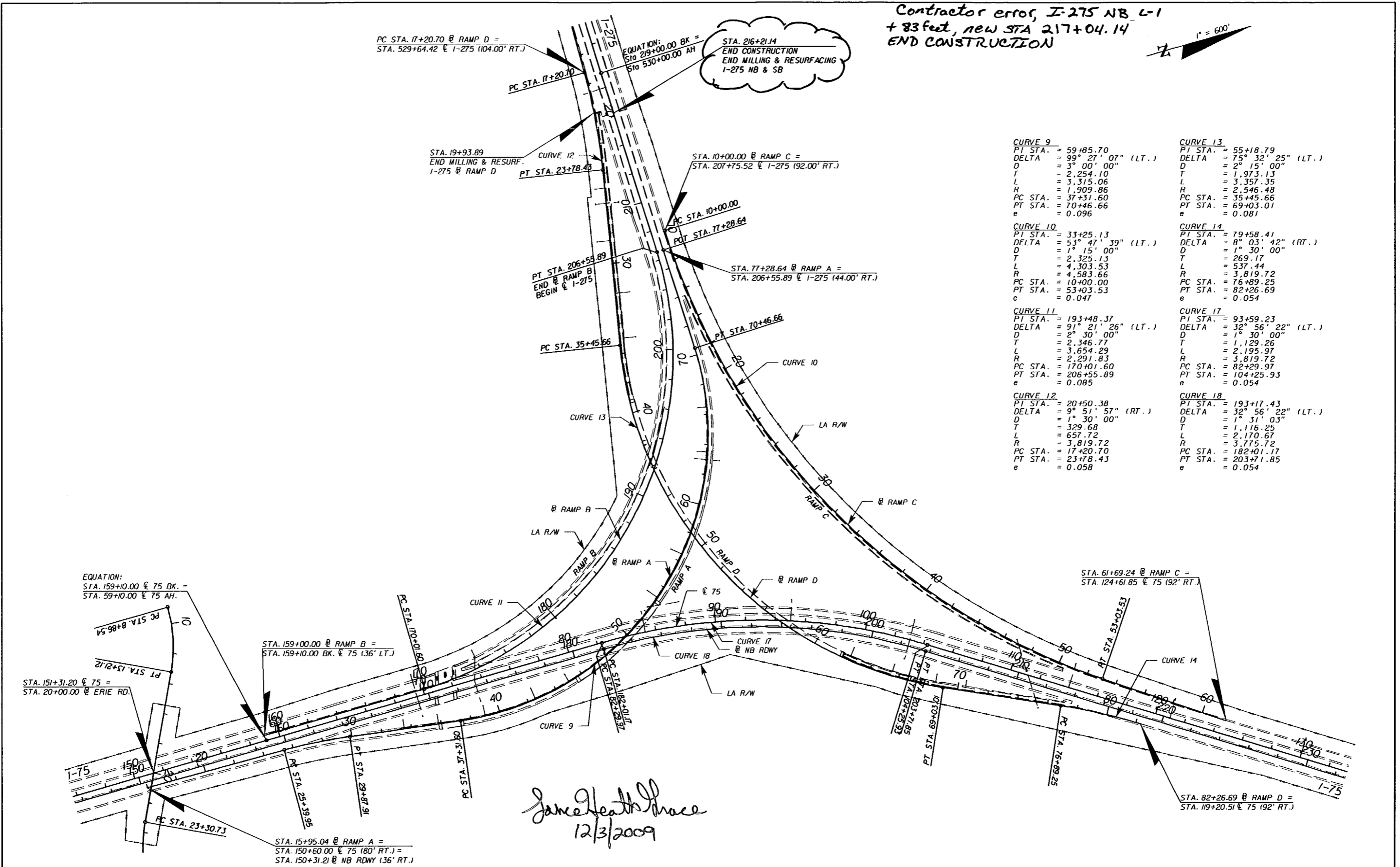
CURVE 9	CURVE 10	CURVE 11	CURVE 12	CURVE 13
PI STA. = 59+85.70	PI STA. = 33+25.13	PI STA. = 193+48.37	PI STA. = 20+50.38	PI STA. = 55+18.79
DELTA = 99° 27' 07" (LT.)	DELTA = 53° 47' 39" (LT.)	DELTA = 91° 21' 26" (LT.)	DELTA = 9° 51' 57" (RT.)	DELTA = 75° 32' 25" (LT.)
D = 3° 00' 00"	D = 1° 15' 00"	D = 2° 30' 00"	D = 1° 30' 00"	D = 2° 15' 00"
T = 2,254.10	T = 2,325.13	T = 2,346.77	T = 329.68	T = 1,973.13
L = 3,315.06	L = 4,303.53	L = 3,654.29	L = 657.72	L = 3,357.35
R = 1,909.86	R = 4,583.66	R = 2,291.83	R = 3,819.72	R = 2,546.48
PC STA. = 37+31.60	PC STA. = 10+00.00	PC STA. = 170+01.60	PC STA. = 17+20.70	PC STA. = 35+45.66
PT STA. = 70+46.66	PT STA. = 53+03.53	PT STA. = 206+55.89	PT STA. = 23+78.43	PT STA. = 69+03.01
e = 0.096	e = 0.047	e = 0.085	e = 0.058	e = 0.081

NOTICE: THE OFFICIAL RECORD OF THIS SHEET IS THE ELECTRONIC FILE SIGNED AND SEALED UNDER RULE 61G15-23.003, F.A.C.

REVISIONS						ROADWAY ENGINEER OF RECORD: EDUARDO A. PONCE, P.E. (56818) FLORIDA DEPARTMENT OF TRANSPORTATION 801 N BROADWAY AVENUE P.O. BOX 1249 BARTOW, FLORIDA 33830-3809/33831-1249	STATE OF FLORIDA DEPARTMENT OF TRANSPORTATION			SHEET NO. 17
DATE	BY	DESCRIPTION	DATE	BY	DESCRIPTION		ROAD NO.	COUNTY	FINANCIAL PROJECT ID	
						93	MANATEE	420253-1-52-01		

ROADWAY PLAN SHEET

Contractor error, I-275 NB L-1
+ 83 feet, new STA 217+04.14
END CONSTRUCTION



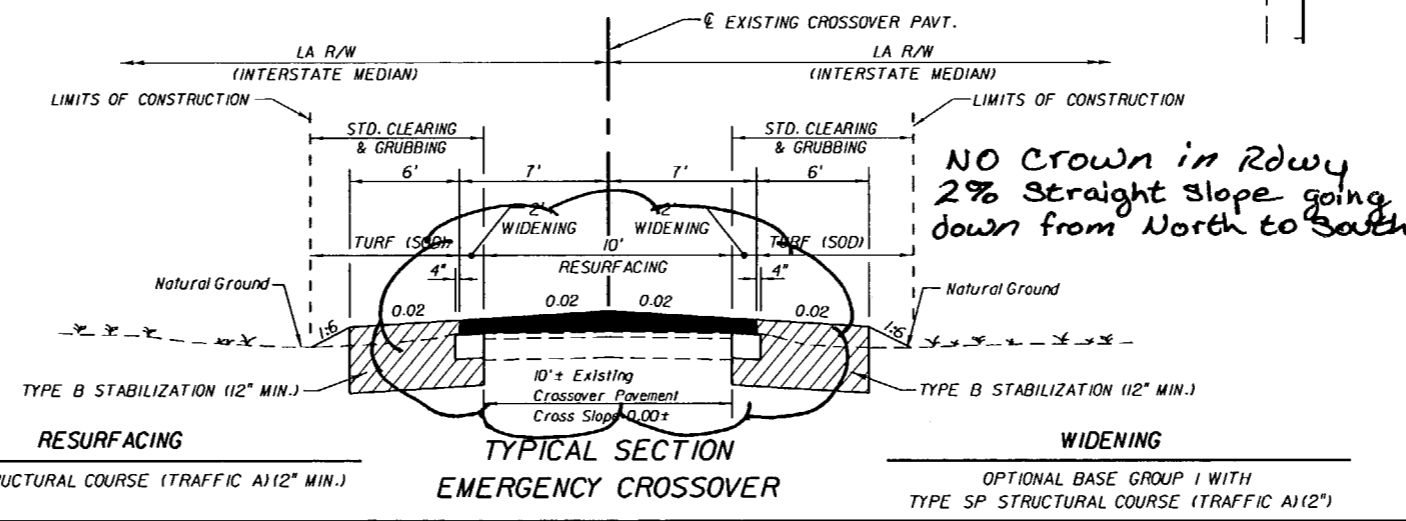
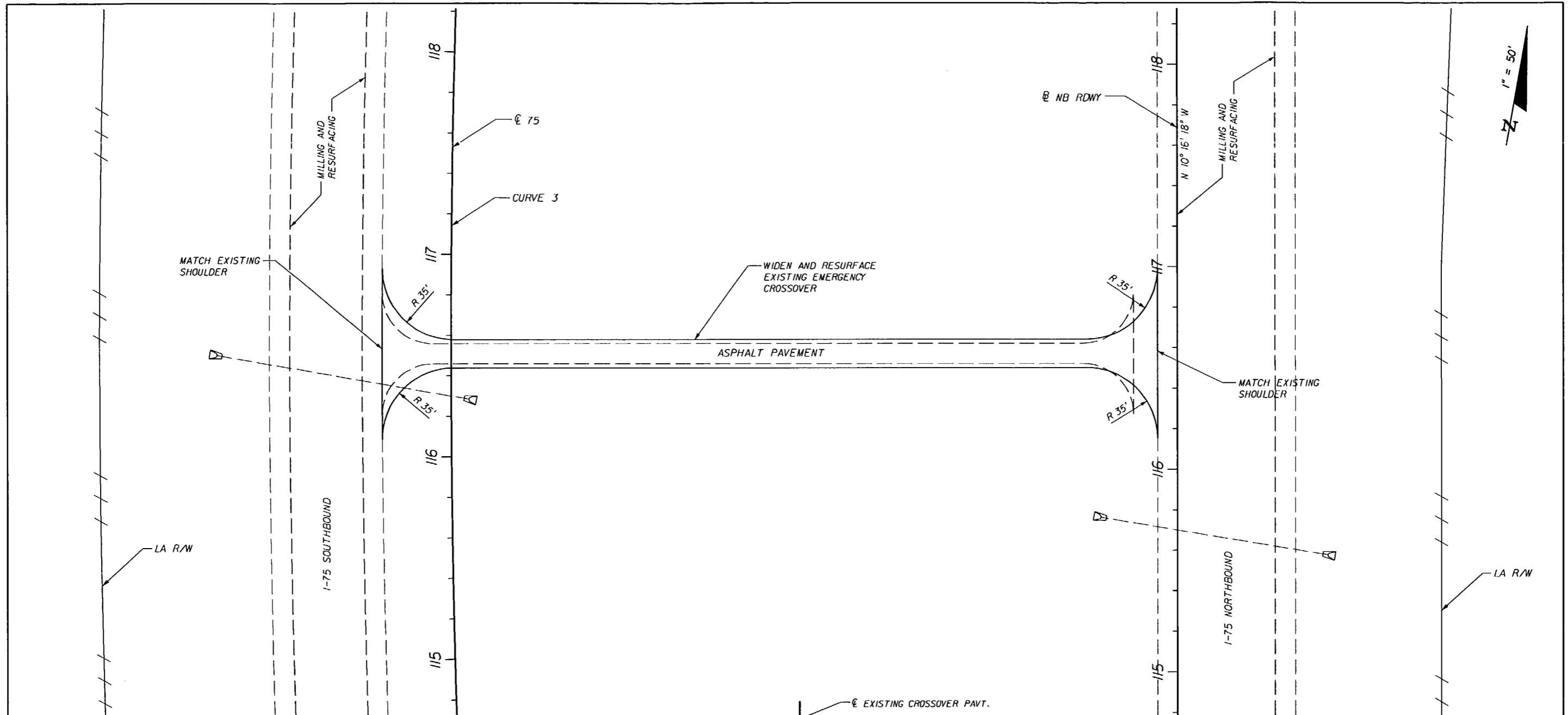
CURVE 9	CURVE 13
PI STA. = 59+85.70	PI STA. = 55+18.79
DELTA = 99° 27' 07" (LT.)	DELTA = 75° 32' 25" (LT.)
D = 3° 00' 00"	D = 2° 15' 00"
T = 2,254.10	T = 1,973.13
L = 3,315.06	L = 3,357.35
R = 1,909.86	R = 2,546.48
PC STA. = 37+31.60	PC STA. = 35+45.66
PT STA. = 70+46.66	PT STA. = 69+03.01
e = 0.096	e = 0.081
CURVE 10	CURVE 14
PI STA. = 33+25.13	PI STA. = 79+58.41
DELTA = 53° 47' 39" (LT.)	DELTA = 8° 03' 42" (RT.)
D = 1° 15' 00"	D = 1° 30' 00"
T = 2,325.13	T = 269.17
L = 4,303.53	L = 537.44
R = 4,583.66	R = 3,819.72
PC STA. = 10+00.00	PC STA. = 76+89.25
PT STA. = 53+03.53	PT STA. = 82+26.69
e = 0.047	e = 0.054
CURVE 11	CURVE 17
PI STA. = 193+48.37	PI STA. = 93+59.23
DELTA = 91° 21' 26" (LT.)	DELTA = 32° 56' 22" (LT.)
D = 2° 30' 00"	D = 1° 30' 00"
T = 2,346.77	T = 1,129.26
L = 3,654.29	L = 2,195.97
R = 2,291.83	R = 3,819.72
PC STA. = 170+01.60	PC STA. = 82+29.97
PT STA. = 206+55.89	PT STA. = 104+25.93
e = 0.085	e = 0.054
CURVE 12	CURVE 18
PI STA. = 20+50.38	PI STA. = 193+17.43
DELTA = 9° 51' 57" (RT.)	DELTA = 32° 56' 22" (LT.)
D = 1° 30' 00"	D = 1° 31' 03"
T = 329.68	T = 1,116.25
L = 657.72	L = 2,170.67
R = 3,819.72	R = 3,775.72
PC STA. = 17+20.70	PC STA. = 182+01.17
PT STA. = 23+78.43	PT STA. = 203+71.85
e = 0.058	e = 0.054

NOTICE: THE OFFICIAL RECORD OF THIS SHEET IS THE ELECTRONIC FILE SIGNED AND SEALED UNDER RULE 60B-23.003, F.A.C.

James Heath Ponce
12/3/2009

REVISIONS						ROADWAY ENGINEER OF RECORD: EDUARDO A. PONCE, P.E. (56818) FLORIDA DEPARTMENT OF TRANSPORTATION 801 N BROADWAY AVENUE P.O. BOX 1249 BARTON, FLORIDA 33830-3809/33831-1249	STATE OF FLORIDA DEPARTMENT OF TRANSPORTATION			SHEET NO. 18
DATE	BY	DESCRIPTION	DATE	BY	DESCRIPTION		ROAD NO.	COUNTY	FINANCIAL PROJECT ID	
							93	MANATEE	420253-1-52-01	

INTERCHANGE LAYOUT



Samuel A. Ponce
12/3/2009

REVISIONS					
DATE	BY	DESCRIPTION	DATE	BY	DESCRIPTION

ROADWAY ENGINEER OF RECORD:
EDUARDO A. PONCE, P.E. (56818)
FLORIDA DEPARTMENT OF TRANSPORTATION
801 N BROADWAY AVENUE
P.O. BOX 1249
BARTON, FLORIDA 33830-3809/33831-1249

STATE OF FLORIDA DEPARTMENT OF TRANSPORTATION		
ROAD NO.	COUNTY	FINANCIAL PROJECT ID
93	MANATEE	420253-1-52-01

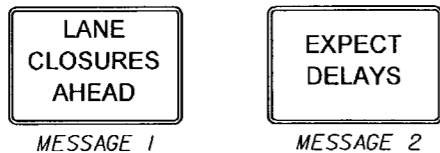
**EMERGENCY CROSSOVER
DETAIL**

SHEET NO.
19

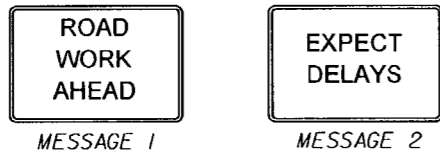
NOTICE: THE OFFICIAL RECORD OF THIS SHEET IS THE ELECTRONIC FILE SIGNED AND SEALED UNDER RULE 6615-23.003, F.A.C.

GENERAL NOTES

MAINTENANCE OF TRAFFIC



PORTABLE CHANGEABLE MESSAGE SIGN (PCMS)
MESSAGE DISPLAY #1 - DURING LANE CLOSURES



PORTABLE CHANGEABLE MESSAGE SIGN (PCMS)
MESSAGE DISPLAY #2 - ALL LANES OPEN

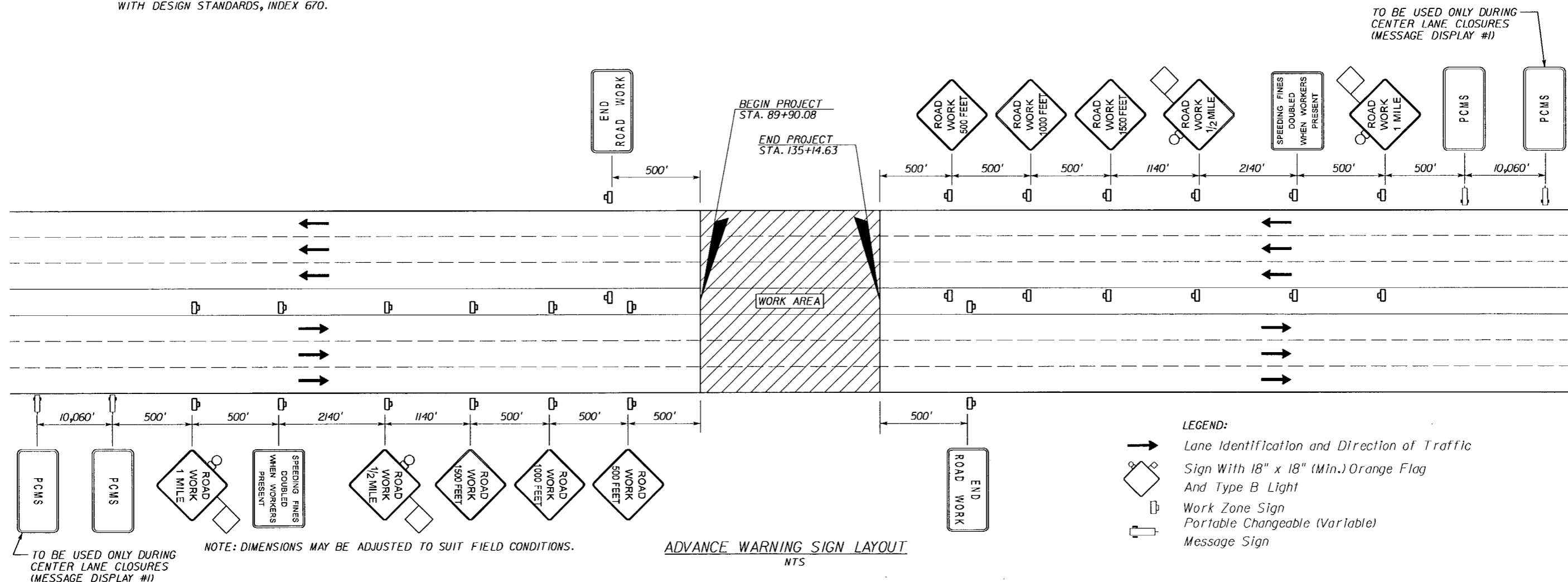
MESSAGES SHALL BE ADJUSTED AS NECESSARY IN ACCORDANCE WITH DESIGN STANDARDS, INDEX 670.

- EXISTING POSTED SPEED OF 70 MPH SHALL BE MAINTAINED, EXCEPT AS REQUIRED BY DESIGN STANDARDS, INDEX 670.
- LANE CLOSURES ARE RESTRICTED AS FOLLOWS:
NO LANE CLOSURES PERMITTED FROM 5:30 AM TO 7:30 PM.
LANE CLOSURES ARE NOT PERMITTED IN INACTIVE WORK ZONES.
- ALL DROPOFFS CREATED DURING CONSTRUCTION SHALL BE BROUGHT INTO COMPLIANCE WITH INDEX 600 AT THE END OF EACH WORK DAY.
- REFERENCE GENERAL NOTES ON THE PROJECT LAYOUT SHEET:
4. TEMPORARY ASPHALT APRONS
5. TRAFFIC ON MILLED SURFACES
- THIS PROJECT SHALL UTILIZE THE MOTORIST AWARENESS SYSTEM (MAS), DESIGN STANDARDS, INDEX 670.

MILLING AND RESURFACING THROUGH LANES:
MAINTAIN TRAFFIC IN ACCORDANCE WITH DESIGN STANDARDS, INDEX 613 OR 614 AS APPLICABLE.

PAVEMENT MARKINGS:
MAINTAIN TRAFFIC IN ACCORDANCE WITH DESIGN STANDARDS, INDEX 619.

SIGNING WORK:
INDEX 612



REVISIONS						ROADWAY ENGINEER OF RECORD: EDUARDO A. PONCE, P.E. (56818) FLORIDA DEPARTMENT OF TRANSPORTATION 801 N BROADWAY AVENUE P.O. BOX 1249 BARTOW, FLORIDA 33830-3809/33831-1249	STATE OF FLORIDA DEPARTMENT OF TRANSPORTATION			SHEET NO. 20
DATE	BY	DESCRIPTION	DATE	BY	DESCRIPTION		ROAD NO.	COUNTY	FINANCIAL PROJECT ID	
						93	MANATEE	420253-1-52-01		

NOTICE: THE OFFICIAL RECORD OF THIS SHEET IS THE ELECTRONIC FILE SIGNED AND SEALED UNDER RULE 61G15-23.003, F.A.C.