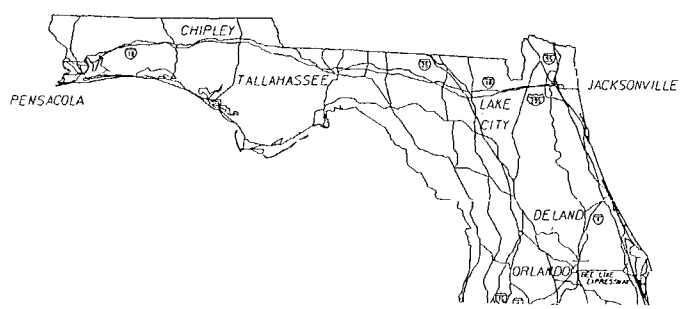


71283

COMPONENTS OF CONTRACT PLANS SET
ROADWAY PLANS
SIGNING AND PAVEMENT MARKING PLANS

STATE OF FLORIDA
DEPARTMENT OF TRANSPORTATION

FINAL AS-BUILT PLANS
CONTRACT PLANS



FINANCIAL PROJECT ID 420241-1-52-01
(FEDERAL FUNDS)
MANATEE COUNTY (13175)
STATE ROAD NO. 93 (1-275)

CONTRACTOR: AJAX PAVING INDUSTRIES OF FLORIDA, LLC
DISTRICT SECRETARY: STAN CANN, P.E.
OPERATIONS ENGINEER: LANCE GRACE, P.E.
PROJECT ADMINISTRATOR: SCOTT GUTHRIE
WORK STARTED: OCTOBER 13, 2008
WORK FINAL ACCEPTED: DECEMBER 20, 2008

A DETAILED INDEX APPEARS ON THE
KEY SHEET OF EACH COMPONENT

INDEX OF ROADWAY PLANS

SHEET NO.	SHEET DESCRIPTION
1	KEY SHEET
2	SUMMARY OF PAY ITEMS
3-4	TYPICAL SECTION
5-6	SUMMARY OF QUANTITIES
7	BENCHMARK DATA
8	PROJECT LAYOUT
9	GENERAL NOTES
10-11	PLAN SHEETS
12	TRAFFIC CONTROL PLAN

- 5A Summary of Guardrail Reset
- 6A Summary of Miscellaneous Asphalt Pavement

INDEX OF FINAL PLANS

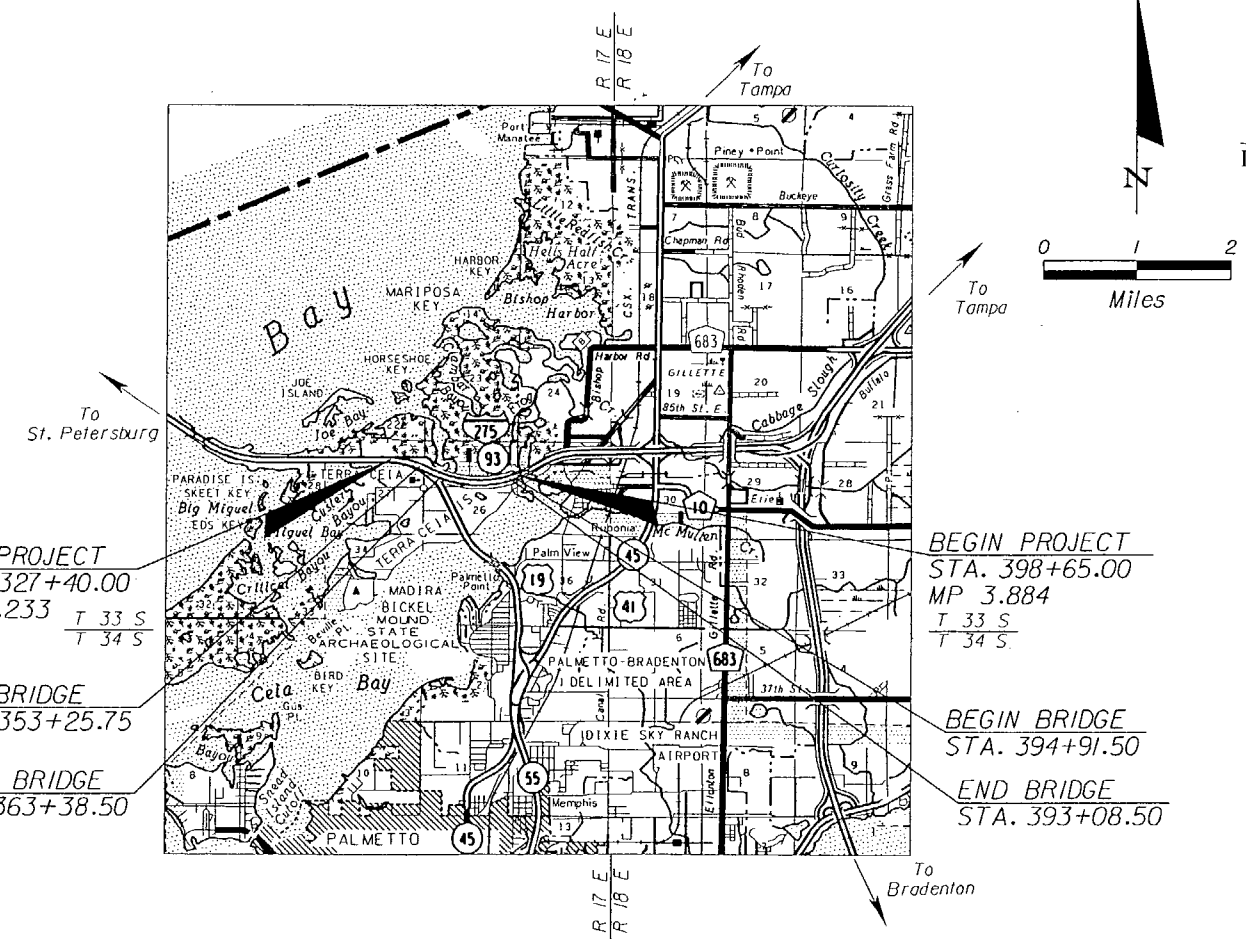
COMPUTATION BOOK I

"This project was constructed in substantial compliance with these plans as provided by the Engineer of Record. If changes were made, those changes are indicated by black ink revision and bear the seal and signature of the Responsible Engineer."

Lance H. Grace 1/13/2009
Lance H. Grace, P.E. Date

GOVERNING STANDARDS AND SPECIFICATIONS:
FLORIDA DEPARTMENT OF TRANSPORTATION,
DESIGN STANDARDS DATED 2008,
AND STANDARD SPECIFICATIONS FOR ROAD AND
BRIDGE CONSTRUCTION DATED 2007,
AS AMENDED BY CONTRACT DOCUMENTS.

APPLICABLE DESIGN STANDARDS MODIFICATIONS: 07/01/08
For Design Standards modifications go to the following Web site:
<http://www.dot.state.fl.us/rddesign/Design/20Standards/Standards.htm>



END PROJECT
STA. 327+40.00
MP 5.233 T 33 S
T 34 S

END BRIDGE
STA. 353+25.75

BEGIN BRIDGE
STA. 363+38.50

BEGIN PROJECT
STA. 398+65.00
MP 3.884
T 33 S
T 34 S

BEGIN BRIDGE
STA. 394+91.50

END BRIDGE
STA. 393+08.50

NOTE: STATIONING RUNS WEST-TO-EAST, MILEPOSTS RUN EAST-TO-WEST.

LENGTH OF PROJECT		
	LINEAR FEET	MILES
ROADWAY	5929.25	1.123
BRIDGES	1195.75	0.226
NET LENGTH OF PROJECT	7125.00	1.349
EXCEPTIONS	0.00	0.000
GROSS LENGTH OF PROJECT	7125.00	1.349

KEY SHEET REVISIONS		
DATE	BY	DESCRIPTION

ROADWAY SHOP DRAWINGS
TO BE SUBMITTED TO:
ENGINEER OF RECORD:
EDUARDO A. PONCE, P.E.
FLORIDA DEPARTMENT OF TRANSPORTATION
DISTRICT ONE OFFICE
801 NORTH BROADWAY AVE.
BARTON, FLORIDA 33830-3809
(863) 519-2300

NOTE: THE SCALE OF THESE PLANS MAY
HAVE CHANGED DUE TO REPRODUCTION.

THIS IS A LUMP SUM PROJECT

Lance H. Grace
1/13/2009

FDOT PROJECT MANAGER: RICHARD D. RYALS

ROADWAY PLANS
ENGINEER OF RECORD: EDUARDO A. PONCE, P.E.

P.E. NO.: 56818

FISCAL YEAR	SHEET NO.
09	1

NOTICE: THE OFFICIAL RECORD OF THIS SHEET IS THE ELECTRONIC FILE SIGNED AND SEALED UNDER RULE 61G5-23.003, F.A.C.

FLORIDA DEPARTMENT OF TRANSPORTATION
 PROPOSAL SUMMARY OF PAY ITEMS

DATE: 04/17/08

PAGE: 1 A0001

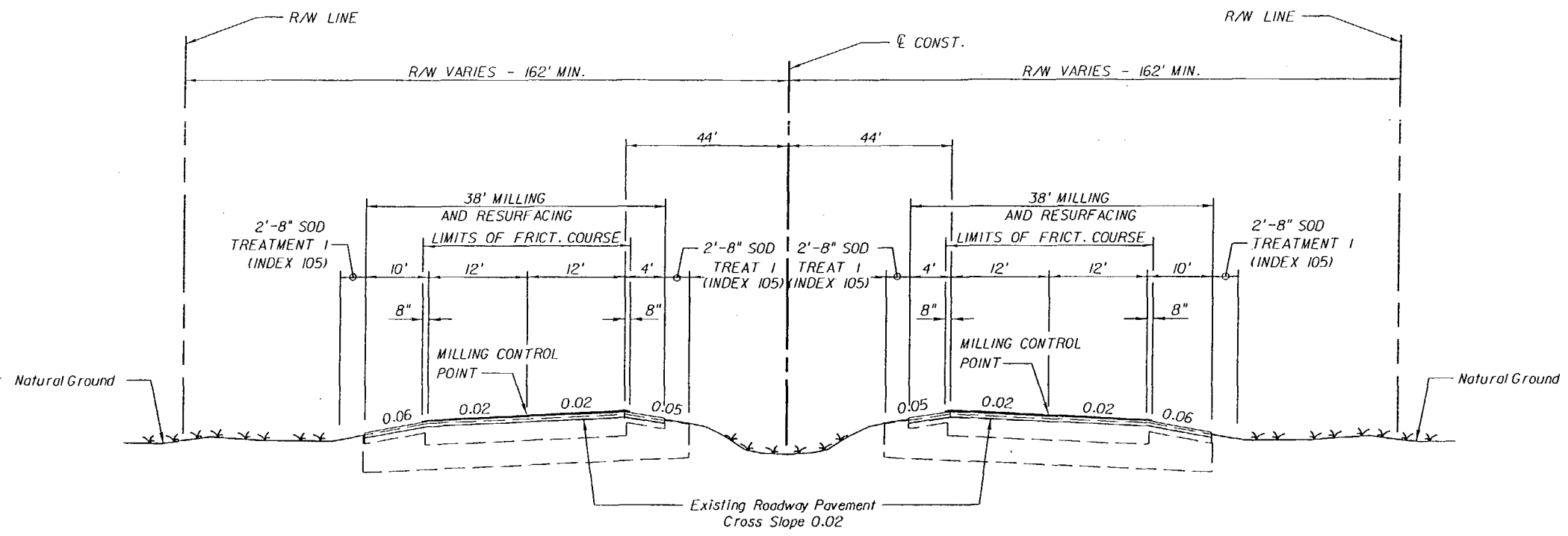
PROPOSAL : T1283 LEAD PROJECT : 42024115201 COUNTY : MANATEE
 PROJECT(S): 42024115201 COUNTY/SECTION: 13175000

MANDIST: 01

0001 SUMMARY OF ROADWAY		PAY ITEMS		
ALT	ITEM NUMBER	ITEM DESCRIPTION	UN IT	QUANTITY TOTAL
	10999- 2-	LUMP SUM CONTRACT, ALTERNATIVE BIDDING	LS	1.000
	10999- 16-	PARTNERING, DO NOT BID	LS	1.000
	10999- 25-	INITIAL CONTINGENCY AMOUNT, DO NOT BID	LS	1.000
	10999-102-	SPEED & LAW ENFORCEMENT OFFICER, STATE FURNISHED, CENTRAL CONTRACT	MH	850.000

NOTICE: THE OFFICIAL RECORD OF THIS SHEET IS THE ELECTRONIC FILE SIGNED AND SEALED UNDER RULE 6165-23.003, F.A.C.

REVISIONS						ROADWAY ENGINEER OF RECORD: EDUARDO A. PONCE, P.E. (156818) FLORIDA DEPARTMENT OF TRANSPORTATION 801 N BROADWAY AVENUE P.O. BOX 1249 BARTON, FLORIDA 33830-3809/33831-1249	STATE OF FLORIDA DEPARTMENT OF TRANSPORTATION			SUMMARY OF PAY ITEMS	SHEET NO. 2
DATE	BY	DESCRIPTION	DATE	BY	DESCRIPTION		ROAD NO.	COUNTY	FINANCIAL PROJECT ID		
							93	MANATEE	420241-1-52-01		



**TYPICAL SECTION
SR 93**

SOUTHBOUND
 STA. 330+40.30 TO STA. 353+73.50
 STA. 353+73.50 TO STA. 362+91.00 BRIDGE EXCEPTION (Bridge No. 130128)
 STA. 362+91.00 TO STA. 393+01.52
 STA. 393+01.52 TO STA. 394+83.08 BRIDGE EXCEPTION (Bridge No. 130126)
 STA. 394+83.08 TO STA. 398+65.00

NORTHBOUND
 STA. 327+24.18 TO STA. 352+78.00
 STA. 352+78.00 TO STA. 363+86.00 BRIDGE EXCEPTION (Bridge No. 130127)
 STA. 363+86.00 TO STA. 393+15.59
 STA. 393+15.59 TO STA. 395+00.05 BRIDGE EXCEPTION (Bridge No. 130125)
 STA. 395+00.05 TO STA. 397+95.00

**PAVEMENT DESIGN - THROUGH LANES
MILLING**

MILL EXISTING ASPHALT PAVEMENT (2.25" AVG. DEPTH)

RESURFACING

TYPE SP STRUCTURAL COURSE (TRAFFIC D)(1.5")(PG 76-22)
 AND FRICTION COURSE FC-5 (0.75")(PG 76-22)

**PAVEMENT DESIGN - PAVED SHOULDERS
MILLING**

MILL EXISTING ASPHALT PAVEMENT (1.5" AVG. DEPTH)

RESURFACING

TYPE SP STRUCTURAL COURSE (TRAFFIC D)(1.5")(PG 76-22)
 AND FRICTION COURSE FC-5 (0.75")(PG 76-22)(8" OVERLAP ONLY)

NOTE: BASE MAY BE ENCOUNTERED DURING SHOULDER MILLING.

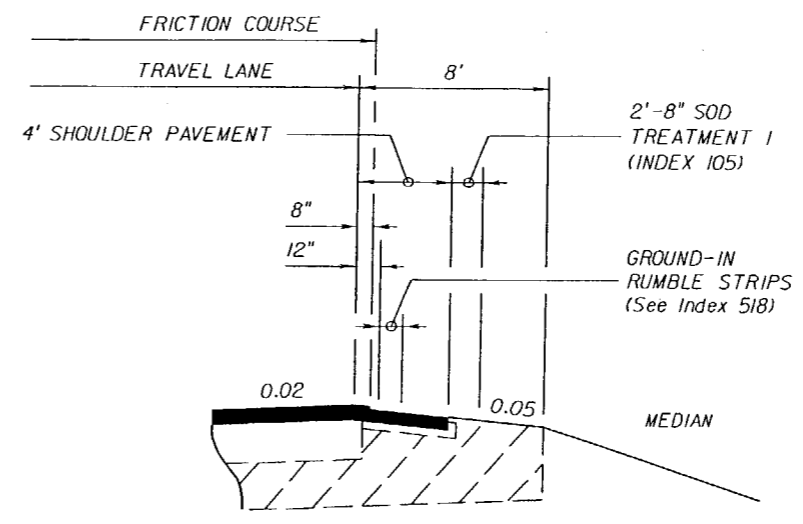
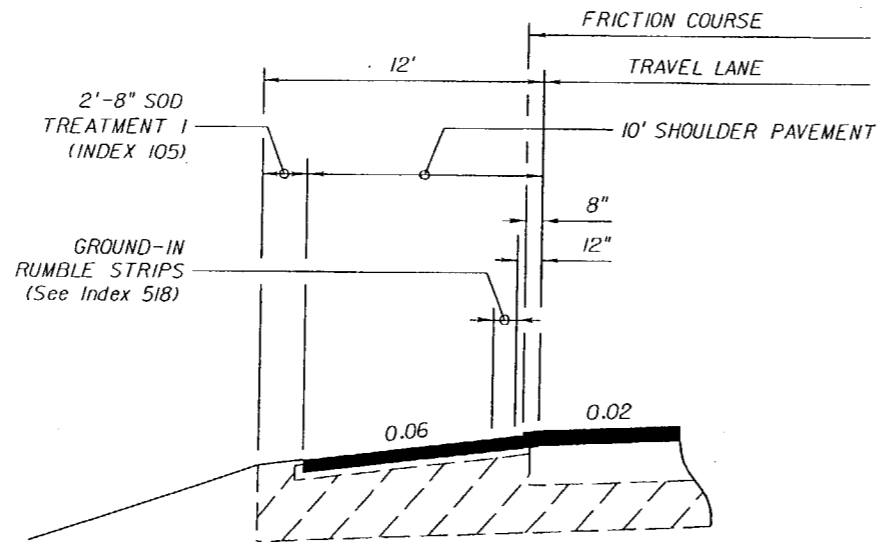
TRAFFIC DATA

CURRENT YEAR ESTIMATE = 2007 AADT = 43400
 OPENING YEAR ESTIMATE = 2009 AADT = 47800
 DESIGN YEAR ESTIMATE = 2029 AADT = 92300
 K = 9.1% D = 51.2% T = 12.1% (24 HOUR)
 DESIGN HOUR T = 6.1%
 DESIGN SPEED = 70 MPH
 POSTED SPEED = 70 MPH

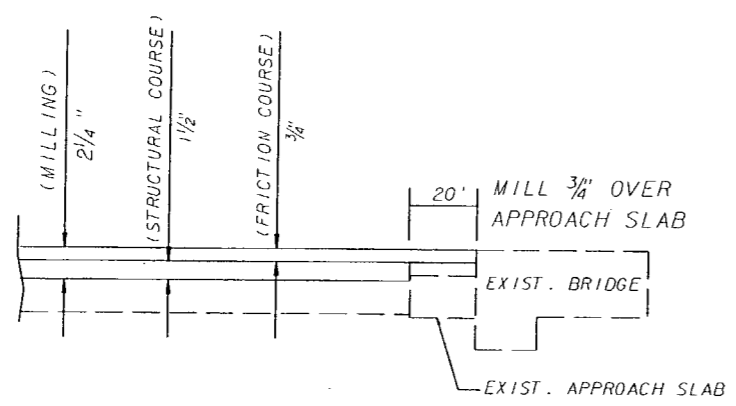
REVISIONS						ROADWAY ENGINEER OF RECORD: EDUARDO A. PONCE, P.E. (56818) FLORIDA DEPARTMENT OF TRANSPORTATION 801 N BROADWAY AVENUE P.O. BOX 1249 BARTON, FLORIDA 33830-3809/33831-1249	STATE OF FLORIDA DEPARTMENT OF TRANSPORTATION			SHEET NO. 3
DATE	BY	DESCRIPTION	DATE	BY	DESCRIPTION		ROAD NO.	COUNTY	FINANCIAL PROJECT ID	
						93	MANATEE	420241-1-52-01		

TYPICAL SECTION

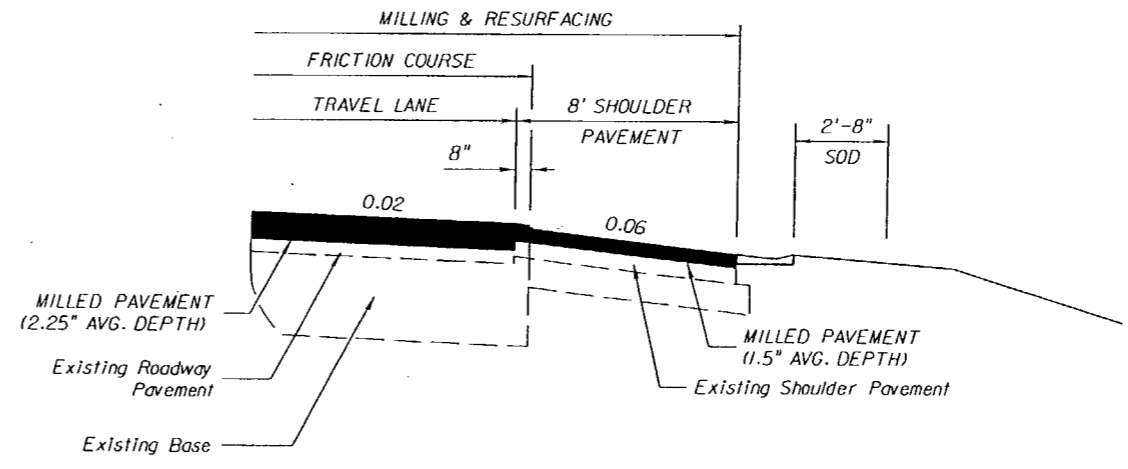
NOTICE: THE OFFICIAL RECORD OF THIS SHEET IS THE ELECTRONIC FILE SIGNED AND SEALED UNDER RULE 61G15-23.003, F.A.C.



RUMBLE STRIP DETAIL



MILLING AND RESURFACING AT BRIDGE ENDS DETAIL



MILLING & RESURFACING
DETAIL FOR SHOULDER GUTTER

REVISIONS						ROADWAY ENGINEER OF RECORD: EDUARDO A. PONCE, P.E. (56618) FLORIDA DEPARTMENT OF TRANSPORTATION 801 N BROADWAY AVENUE P.O. BOX 1249 BARTOW, FLORIDA 33830-3809/33831-1249	STATE OF FLORIDA DEPARTMENT OF TRANSPORTATION			TYPICAL SECTION	SHEET NO. 4
DATE	BY	DESCRIPTION	DATE	BY	DESCRIPTION		ROAD NO.	COUNTY	FINANCIAL PROJECT ID		
						93	MANATEE	420241-1-52-01			

NOTICE: THE OFFICIAL RECORD OF THIS SHEET IS THE ELECTRONIC FILE SIGNED AND SEALED UNDER RULE 6165-23.003, F.A.C.

SUMMARY OF GUARDRAIL

LOCATION		GUARDRAIL (LF)								END ANCHORAGE ASSEMBLIES (EA)				BRIDGE ANCHORAGE ASSEMBLIES (EA)				REMARKS	FIELD BOOK REFERENCE		
STATION TO STATION		REMOVE		ROADWAY (THRIE BEAM) SCHEME I				RESET				FLARED		TYPE II		THRIE BEAM				W BEAM	
		P	F	STATION		P	F	STATION		P	F	P	F	P	F	P	F			P	F
SOUTHBOUND																					
351+99.45 TO 353+69.16		LT.	167	353+29.16 TO 353+72.91		43.75	43.75	352+04.16 TO 353+29.16		125											
340+51.13 TO 354+07.86		RT.	1352	353+68.50 TO 354+12.25		43.75	43.75	340+56.20 TO 353+68.50		1350											
391+53.05 TO 393+02.15		LT.	148	392+62.41 TO 393+05.90		43.75	43.75	391+50.69 TO 392+62.41		112.5											
385+08.25 TO 392+96.20		RT.	796	392+56.74 TO 392+99.95		43.75	43.75	385+04.47 TO 392+56.74		762.5											
397+16.42 TO 398+65.00		LT.	147	398+25.31 TO 398+68.66		43.75	43.75	397+13.57 TO 398+25.31		112.5											
394+76.66 TO 398+65.00		RT.	394	398+25.54 TO 398+68.73		43.75	43.75	394+76.66 TO 398+25.54		354											
NORTHBOUND																					
363+86.00 TO 367+90.07		LT.	396	363+82.18 TO 364+26.52		43.75	43.75	364+26.52 TO 367+93.91		362.5											
363+86.00 TO 365+48.84		RT.	159	363+82.25 TO 364+26.31		43.75	43.75	364+26.31 TO 365+52.24		125											
395+06.75 TO 397+95.00		LT.	285	395+02.94 TO 395+46.89		43.75	43.75	395+46.89 TO 397+95.00		245											
394+99.27 TO 396+41.87		RT.	139	394+95.49 TO 395+39.60		43.75	43.75	395+39.60 TO 396+40.34		100											

CONST. THRIE BEAM PER INDEX #13 SHEET 13 OF 23
QUANTITIES FOR ESTIMATING PURPOSES ONLY

Some of the existing guardrail was in good condition and met the requirements of the contract documents.
See page 5A for details

SUMMARY OF ROCK BAGS			
STATION	SIDE	GUTTER INLET	QUAN. (EA.)
343+50.00	LT.	TYPE S	20
343+50.00	RT.	TYPE S	20
346+00.00	LT.	TYPE S	20
346+00.00	RT.	TYPE S	20
349+00.00	LT.	TYPE S	20
349+00.00	RT.	TYPE S	20
352+00.00	LT.	TYPE S	20
352+00.00	RT.	TYPE S	20
366+00.00	LT.	TYPE S	20
366+00.00	RT.	TYPE S	20
388+00.00	LT.	TYPE S	20
391+00.00	LT.	TYPE S	20
397+50.00	LT.	TYPE S	20
397+50.00	RT.	TYPE S	20

This was a Lump Sum contract.
All quantities are for informational purposes only.
*Also see striping sheets for guardrail reset.

James Heath
1/19/09

QUANTITIES FOR ESTIMATING PURPOSES ONLY

REVISIONS						ROADWAY ENGINEER OF RECORD: EDUARDO A. PONCE, P.E. (56818) FLORIDA DEPARTMENT OF TRANSPORTATION 801 N BROADWAY AVENUE P.O. BOX 1249 BARTOW, FLORIDA 33830-3809/33831-1249			STATE OF FLORIDA DEPARTMENT OF TRANSPORTATION			SHEET NO.	
DATE	BY	DESCRIPTION	DATE	BY	DESCRIPTION	ROAD NO.	COUNTY	FINANCIAL PROJECT ID	SUMMARY OF QUANTITIES		5.		
						93	MANATEE	420241-1-52-01					

NOTICE: THE OFFICIAL RECORD OF THIS SHEET IS THE ELECTRONIC FILE SIGNED AND SEALED UNDER RULE 68G5-23.003, F.A.C.

SUMMARY OF GUARDRAIL REMOVAL						
LOCATION		SIDE			REMARKS	FIELD BOOK REFERENCE
STATION TO STATION			P	F		
SOUTHBOUND						
Planned	351+99.45 TO 353+69.16	LT.	167			
Final	NONE			0		
Deleted	352+36.95 TO 353+29.16					
Planned	340+51.13 TO 354+07.86	RT.	1352			
Final	340+51 TO 343+00			249.0		
Final	343+47 TO 344+00			53.0		
Deleted	343+00 TO 343+47					
Deleted	344+00 TO 353+68.50					
Planned	391+53.05 TO 393+02.15	LT.	148			
Final	391+53 TO 391+80			27.0	ON RADIUS	
Deleted	391+80 TO 392+62.41					
Planned	385+08.25 TO 392+96.20	RT.	796			
Final	385+08 TO 392+35			727.0	ON RADIUS	
Deleted	392+35 TO 392+56.74					
Planned	397+16.42 TO 398+65.00	RT.	147			
Final	NONE			0	ON RADIUS	
Deleted	397+16.42 TO 398+25.31					
Planned	394+76.66 TO 398+65.00	RT.	394			
Final	396+21 TO 396+71			50.0	ADJUST BRIDGE TO BRIDGE	
Deleted	394+76.66 TO 396+21					
Deleted	396+71 TO 398+25.54					
NORTHBOUND						
Planned	363+86.00 TO 367+90.07	LT.	396			
Final	365+42 TO 367+45			201.0	ON RADIUS	
Deleted	364+26.52 TO 365+42					
Deleted	367+45 TO 367+90.07					
Planned	363+86.00 TO 365+48.84	RT.	159			
Final	364+26 TO 365+42			115.0	ON RADIUS	
Deleted	365+42 TO 365+48.84					
Planned	395+06.75 TO 397+95.00	LT.	285			
Final	NONE			0	ADJUST BRIDGE TO BRIDGE	
Deleted	395+06.75 TO 397+95.00					
Planned	394+99.27 TO 396+41.87	RT.	139			
Final	NONE			0	ON RADIUS	
Deleted	394+99.27 TO 396+41.87					

TOTALS 3983 1422

CONSTR. THRIE BEAM PER INDEX 402 SHEET 12 OF 23
QUANTITIES FOR ESTIMATING PURPOSES ONLY

Samuel A. Ponce
1/14/09

SUMMARY OF GUARDRAIL RESET						
LOCATION		SIDE			REMARKS	FIELD BOOK REFERENCE
STATION TO STATION			P	F		
SOUTHBOUND						
Planned	352+04.16 TO 353+29.16	LT.	125			
Final	NONE			0		
Deleted	352+04.16 TO 353+29.16					
Planned	340+56.20 TO 353+68.5	RT.	1350			
Final	340+51 TO 343+00			249.0		
Final	343+47 TO 344+00			53.0		
Deleted	343+00 TO 343+47					
Deleted	344+00 TO 353+68.50					
Planned	391+50.69 TO 392+62.41	LT.	112.5			
Final	391+53 TO 391+80			27.0	ON RADIUS	
Deleted	391+80 TO 392+62.41			0		
Planned	385+04.47 TO 392+56.74	RT.	762.5			
Final	385+08 TO 392+35			727.0	ON RADIUS	
Deleted	392+35 TO 392+56.74					
Planned	397+13.57 TO 398+25.31	RT.	112.5			
Final	NONE			0	ON RADIUS	
Deleted	397+16.42 TO 398+25.31					
Planned	394+76.66 TO 398+25.54	RT.	354			
Final	396+21 TO 396+71			50.0	ADJUST BRIDGE TO BRIDGE	
Deleted	394+76.66 TO 396+21					
Deleted	396+71 TO 398+25.54					
NORTHBOUND						
Planned	364+26.52 TO 367+93.91	LT.	362.5			
Final	365+42 TO 367+45			201.0	ON RADIUS	
Deleted	364+26.52 TO 365+42					
Deleted	367+45 TO 367+90.07					
Planned	364+26.31 TO 265+52.24	RT.	125			
Final	364+26 TO 365+42			115.0	ON RADIUS	
Deleted						
Planned	395+46.89 TO 397+95.00	LT.	245			
Final	NONE			0	ADJUST BRIDGE TO BRIDGE	
Deleted	395+46.89 TO 397+95.00					
Planned	395+39.60 TO 396+40.34	RT.	100			
Final	NONE			0	ON RADIUS	
Deleted	395+39.60 TO 396+40.34					

TOTALS 3649 1422

REVISIONS						ROADWAY ENGINEER OF RECORD EDUARDO A. PONCE, P.E. (56818) FLORIDA DEPARTMENT OF TRANSPORTATION 801 N. BROADWAY AVENUE P.O. BOX 1249 BARTOW, FLORIDA 33830-3809/33831-1249	STATE OF FLORIDA DEPARTMENT OF TRANSPORTATION			SUMMARY OF QUANTITIES	SHEET NO. 5A
DATE	BY	DESCRIPTION	DATE	BY	DESCRIPTION		ROAD NO.	COUNTY	FINANCIAL PROJECT NO.		
							93	MANATEE	420241-1-52-01		

Some of the existing misc. asphalt was in good condition and met the requirements of the contract documents.

See page 6A for details

MISCELLANEOUS ASPHALT PAVEMENT

STATION	SIDE	TN	STATION	SIDE	TN
SOUTHBOUND			NORTHBOUND		
351+94.16 TO 353+69.16	LT.	5.83	363+86.00 TO 368+04.15	LT.	13.75
340+46.09 TO 354+07.86	RT.	46.67	363+86.00 TO 365+62.31	RT.	5.83
391+40.75 TO 393+02.15	LT.	5.42	395+06.95 TO 397+95.00	LT.	9.5
384+94.61 TO 392+96.20	RT.	27.08	394+99.27 TO 396+50.38	RT.	5.0
397+03.63 TO 398+65.00	LT.	5.42			
394+76.66 TO 398+65.00	RT.	13.13			
			SEE PAGE 6A FOR DETAILS		

CONSTRUCT MISC. ASPHALT PER INDEX NO. 400 SHEET 14 OF 23

This was a Lump Sum contract.
All quantities are for informational purposes only.

SUMMARY OF STAKED SILT FENCE

LOCATION STA. TO STA.	SIDE	LENGTH (LF)
333+74.99 TO 333+84.96	LT.	40
333+74.63 TO 333+84.78	RT.	40
335+51.06 TO 336+48.90	LT.	100
335+95.01 TO 336+04.99	LT./RT.	40
343+00.00 TO 354+24.00	LT.	924
343+45.00 TO 343+55.00	LT./RT.	40
343+00.00 TO 353+43.00	RT.	1,043
363+86.00 TO 374+50.00	LT.	1,048
373+95.06 TO 374+05.07	LT./RT.	40
373+50.93 TO 374+49.06	RT.	100
378+48.98 TO 379+51.03	LT.	100
378+95.06 TO 379+05.07	LT./RT.	40
378+50.95 TO 379+49.06	RT.	100
387+48.83 TO 388+51.17	LT.	100
387+94.99 TO 388+05.01	LT./RT.	40
390+48.90 TO 391+51.10	LT.	100
395+09.41 TO 397+95.00	LT.	281
394+74.03 TO 398+65.00	RT.	397
397+44.99 TO 397+55.01	LT./RT.	40
DITCH BLOCKS PROJECT	LT./RT./MED.	
DITCH BLOCKS AT 300' SPACING		
72 DITCH BLOCKS X 30'		
PER DITCH BLOCK		2,160

Lance K. Ponce
1/14/09

QUANTITIES FOR ESTIMATING PURPOSES ONLY

REVISIONS						ROADWAY ENGINEER OF RECORD: EDUARDO A. PONCE, P.E. (56818) FLORIDA DEPARTMENT OF TRANSPORTATION 801 N BROADWAY AVENUE P.O. BOX 1249 BARTOW, FLORIDA 33830-3809/33831-1249	STATE OF FLORIDA DEPARTMENT OF TRANSPORTATION			SHEET NO. 6
DATE	BY	DESCRIPTION	DATE	BY	DESCRIPTION		ROAD NO.	COUNTY	FINANCIAL PROJECT ID	
							93	MANATEE	420241-1-52-01	

SUMMARY OF QUANTITIES

NOTICE: THE OFFICIAL RECORD OF THIS SHEET IS THE ELECTRONIC FILE SIGNED AND SEALED UNDER RULE 6105-23.003, F.A.C.

MISCELLANEOUS ASPHALT PAVEMENT

STATION	SIDE	TN	P	F	STATION	SIDE	TN	P	F
SOUTHBOUND					NORTHBOUND				
351+94.16 TO 353+69.16	LT.	5.83	5.83	0	363+86.00 TO 368+04.15	LT.	13.75	13.75	0
340+46.09 TO 354+07.86	RT.	46.67	46.67	0	363+86.00 TO 365+62.31	RT.	5.83	5.83	0
391+40.75 TO 393+02.15	LT.	5.42	5.42	0	395+06.95 TO 397+95.00	LT.	9.5	9.5	0
384+94.61 TO 392+96.20	RT.	27.08	27.08	0	394+99.27 TO 396+50.38	RT.	5	5	0
397+03.63 TO 398+65.00	LT.	5.42	5.42	0					
394+76.66 TO 398+65.00	RT.	13.13	13.13	0					
341+01 TO 341+32	RT.	0.37	0.37	0.37	363+93 TO 364+03	LT.	0.42	0.42	0.42
341+35 TO 342+34	RT.	6.50	6.50	6.50	364+03 TO 364+23	LT.	0.66	0.66	0.66
343+79 TO 343+82	RT.	0.11	0.11	0.11	364+30 TO 364+36	LT.	0.36	0.36	0.36
346+76 TO 347+09	RT.	1.72	1.72	1.72	364+73 TO 364+80	LT.	0.43	0.43	0.43
351+85 TO 352+09	LT.	2.63	2.63	2.63	365+04 TO 365+64	LT.	2.55	2.55	2.55
354+90 TO 355+25	RT.	0	0	1.92	365+20 TO 365+31	RT.	1.17	1.17	1.17
385+19 TO 385+75	RT.	4.10	4.10	4.10	366+06 TO 366+23	LT.	0	0	1.04
387+81 TO 387+92	RT.	0.60	0.60	0.60	366+47 TO 366+52	LT.	0.42	0.42	0.42
387+95 TO 392+97	RT.	25.20	25.20	25.20	367+49 TO 368+00	LT.	3.64	3.64	3.64
391+32 TO 391+80	LT.	4.75	4.75	4.75	395+06 TO 395+36	LT.	1.65	1.65	1.65
396+42 TO 396+81	RT.	0	0	1.48	395+12 TO 396+69	RT.	2.05	2.05	12.42
397+04 TO 397+55	LT.	4.15	4.15	4.15					
398+30 TO 398+95	RT.	2.83	2.83	2.83					
TOTALS		156.51	156.51	56.36			47.43	47.43	24.76

CONSTRUCT MISC. ASPHALT PAVEMENT PER INDEX NO. 400 SHEET 14 OF 23

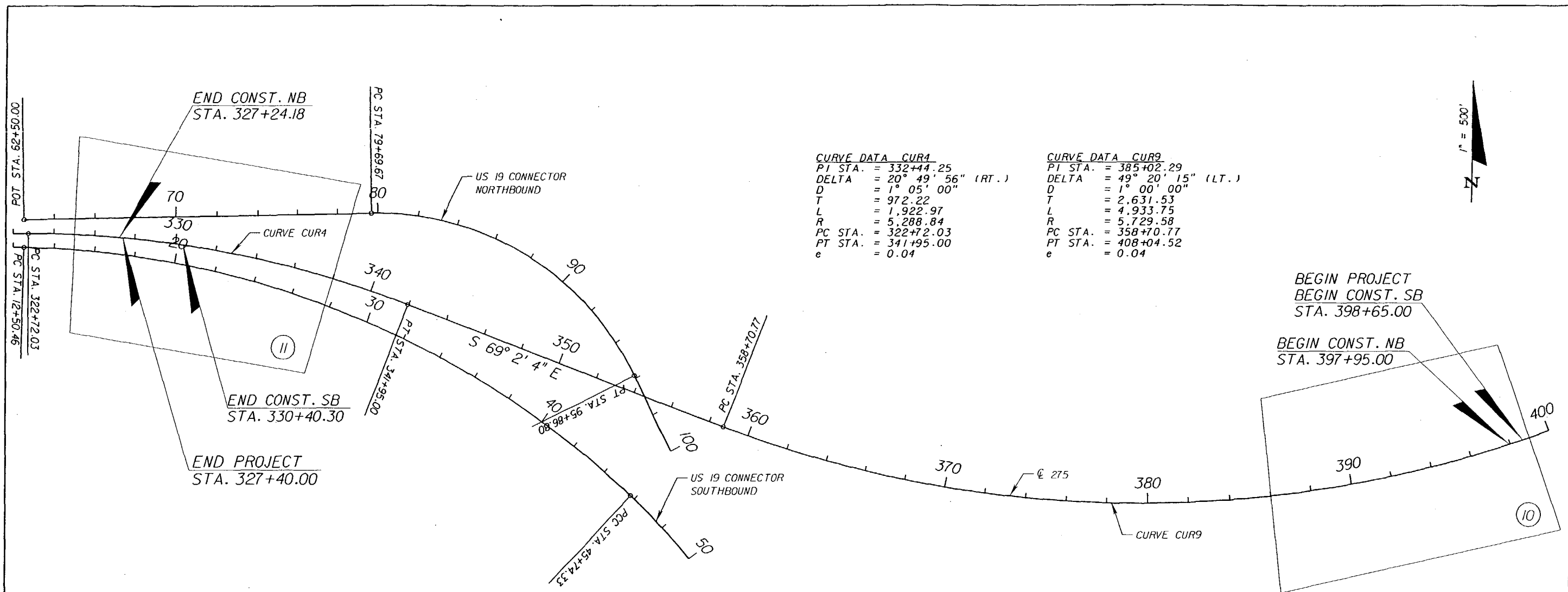
J. K. Wallace
11/19/09

DATE		BY	DESCRIPTION	REVISIONS		DESCRIPTION	ROADWAY ENGINEER OF RECORD EDUARDO A. PONCE, P.E. (56818) FLORIDA DEPARTMENT OF TRANSPORTATION 801 N. BROADWAY AVENUE P.O. BOX 1249 BARTOW, FLORIDA 33830-3809/33831-1249	STATE OF FLORIDA DEPARTMENT OF TRANSPORTATION			SUMMARY OF QUANTITIES	SHEET NO. 6A
				DATE	BY			ROAD NO. 93 COUNTY MANATEE FINANCIAL PROJECT NO. 420241-1-52-01				

BENCH MARK DATA							
NUMBER	ELEVATION (FEET)	BASELINE	STATION	OFFSET (FEET)	STATE PLANE COORDINATES		DESCRIPTION
					NORTHING	EASTING	
BM 117	3.550	I-275	332+62.00	236' LT.	1,181,951	466,655	STD. 4" X 4" FDOT CM W/ BRASS DISK
BM 312	9.334	I-275	355+10.00	26' LT.	1,181,693	466,859	STD. 4" X 4" FDOT CM W/ BRASS DISK
BM 313	22.406	I-275	344+82.00	26' LT.	1,181,386	467,784	STD. 4" X 4" FDOT CM W/ BRASS DISK
BM 314	34.480	I-275	354+06.00	78' RT.	1,180,958	468,610	FDOT BRASS DISK IN GUARDRAIL
BM 315	34.930	I-275	352+74.00	44' LT.	1,181,119	468,530	FDOT BRASS DISK IN GUARDRAIL
BM 316	26.100	I-275	363+86.00	41' LT.	1,180,741	469,572	FDOT BRASS DISK IN GUARDRAIL
BM 317	27.220	I-275	363+05.00	35' RT.	1,180,691	469,473	FDOT BRASS DISK IN GUARDRAIL
BM 318	16.337	I-275	366+15.00	15' RT.	1,180,629	469,778	STD. 4" X 4" FDOT CM W/ BRASS DISK
BM 319	8.331	I-275	375+69.00	16' RT.	1,180,483	470,723	STD. 4" X 4" FDOT CM W/ BRASS DISK
BM 320	18.890	I-275	385+22.00	13' RT.	1,180,499	471,677	STD. 4" X 4" FDOT CM W/ BRASS DISK
BM 321	32.720	I-275	392+99.00	39' LT.	1,180,677	472,433	FDOT BRASS DISK IN GUARDRAIL
BM 322	32.550	I-275	392+94.00	63' RT.	1,180,576	472,451	FDOT BRASS DISK IN GUARDRAIL
BM 323	30.920	I-275	395+11.00	89' LT.	1,180,777	472,623	FDOT BRASS DISK IN GUARDRAIL
BM 324	32.660	I-275	394+84.00	72' RT.	1,180,615	472,640	FDOT BRASS DISK IN GUARDRAIL
BM 325	30.960	I-275	398+52.00	60' RT.	1,180,735	472,992	FDOT BRASS DISK IN GUARDRAIL
BM 326	29.560	I-275	397+70.00	64' LT.	1,180,827	472,875	FDOT BRASS DISK IN GUARDRAIL
BM 327	13.050	I-275	416+11.00	80' LT.	1,181,627	474,516	FDOT BRASS DISK IN GUARDRAIL
BM 328	12.690	I-275	415+50.00	70' RT.	1,181,466	474,534	FDOT BRASS DISK IN GUARDRAIL

REVISIONS						ROADWAY ENGINEER OF RECORD: EDUARDO A. PONCE, P.E. (56818) FLORIDA DEPARTMENT OF TRANSPORTATION 801 N BROADWAY AVENUE P.O. BOX 1249 BARTON, FLORIDA 33830-3809/33831-1249	STATE OF FLORIDA DEPARTMENT OF TRANSPORTATION			BENCHMARK DATA	SHEET NO. 7
DATE	BY	DESCRIPTION	DATE	BY	DESCRIPTION		ROAD NO.	COUNTY	FINANCIAL PROJECT ID		
							93	MANATEE	420241-1-52-01		

NOTICE: THE OFFICIAL RECORD OF THIS SHEET IS THE ELECTRONIC FILE SIGNED AND SEALED UNDER RULE 605-23.003, F.A.C.



CURVE DATA CUR4
 PI STA. = 332+44.25
 DELTA = 20° 49' 56" (RT.)
 D = 1° 05' 00"
 T = 972.22
 L = 1,922.97
 R = 5,288.84
 PC STA. = 322+72.03
 PT STA. = 341+95.00
 e = 0.04

CURVE DATA CUR9
 PI STA. = 385+02.29
 DELTA = 49° 20' 15" (LT.)
 D = 1° 00' 00"
 T = 2,631.53
 L = 4,933.75
 R = 5,729.58
 PC STA. = 358+70.77
 PT STA. = 408+04.52
 e = 0.04



GENERAL NOTES FOR UTILITY ADJUSTMENTS

1. THE LOCATION (S) OF THE UTILITIES SHOWN IN THE PLANS (INCLUDING THOSE DESIGNATED Vv, Vh, AND Vvh) ARE BASED ON LIMITED INVESTIGATION TECHNIQUES AND SHOULD BE CONSIDERED APPROXIMATE ONLY. THE VERIFIED LOCATION/ELEVATIONS APPLY ONLY AT THE POINTS SHOWN. INTERPOLATIONS BETWEEN THESE POINTS HAVE NOT BE VERIFIED.

EXISTING UTILITIES ARE TO REMAIN IN PLACE UNLESS OTHERWISE NOTED.

THE CONTRACTOR SHALL NOTIFY UTILITY OWNERS OF ANY EXCAVATION OR DEMOLITION ACTIVITY THROUGH SUNSHINE ONE-CALL OF FLORIDA, INC. (1-800-432-4770) AND SHALL ALSO NOTIFY THOSE UTILITY OWNERS/AGENCIES LISTED WITHIN OR IMPACTED BY THESE PLANS, NOT LESS THAN TWO (2) FULL BUSINESS DAYS IN ADVANCE OF THE BEGINNING OF CONSTRUCTION ON THE JOB SITE.

UTILITY OWNERS/AGENCIES		
UTILITY OWNERS	CONTACT	PHONE
BRIGHT HOUSE NETWORKS	TOM WRIGHT	(941) 748-3816 Ext: 21648
FLORIDA POWER & LIGHT	GREG COKER	(941) 723-4444
VERIZON FLORIDA, INC.	DENISE HUTTON	(941) 906-6722
MANATEE COUNTY UTILITY OPERATIONS	HOWARD LEYO	(941) 708-7450 Ext: 7368
PEACE RIVER ELECTRIC COOP.	TOM WINGO	N/A
FLORIDA POWER & LIGHT	NEELES SHAH	(561) 694-3507
FLORIDA POWER & LIGHT	NOEL REESE	(305) 552-3249

REVISIONS						ROADWAY ENGINEER OF RECORD: EDUARDO A. PONCE, P.E. (56818) FLORIDA DEPARTMENT OF TRANSPORTATION 801 N BROADWAY AVENUE P.O. BOX 1249 BARTOW, FLORIDA 33830-3809/33831-1249	STATE OF FLORIDA DEPARTMENT OF TRANSPORTATION			PROJECT LAYOUT	SHEET NO. 8
DATE	BY	DESCRIPTION	DATE	BY	DESCRIPTION		ROAD NO.	COUNTY	FINANCIAL PROJECT ID		
						93	MANATEE	420241-1-52-01			

NOTICE: THE OFFICIAL RECORD OF THIS SHEET IS THE ELECTRONIC FILE SIGNED AND SEALED UNDER RULE 61G5-23.003, F.A.C.

GENERAL NOTES

1. THE BENCH MARK DATUM IN PLANS IS BASED ON NGVD 1983.
2. ANY PUBLIC LAND CORNER WITHIN THE LIMITS OF CONSTRUCTION IS TO BE PROTECTED. IF A CORNER MONUMENT IS IN DANGER OF BEING DESTROYED AND HAS NOT BEEN PROPERLY REFERENCED, THE PROJECT ENGINEER SHOULD NOTIFY THE DISTRICT LOCATION SURVEYOR WITHOUT DELAY BY TELEPHONE.
3. EXISTING SUPERELEVATION RATES TO BE MAINTAINED UNLESS OTHERWISE SHOWN IN THE PLANS OR AS DIRECTED BY THE PROJECT ENGINEER.
4. DURING CONSTRUCTION, ANY MANHOLE WITH A TOP ELEVATION OF 1/2" OR MORE ABOVE THE ADJACENT PAVEMENT SHALL HAVE A TEMPORARY ASPHALT APRON CONSTRUCTED AS SHOWN IN INDEX 600. WHEN THE POSTED SPEED LIMIT IS 50 MPH OR LESS AND THE CONDITION IS EXPECTED TO LAST LESS THAN 24 HOURS, THE ENGINEER MAY WAIVE THE APRON REQUIREMENT. THIS REQUIREMENT MAY NOT BE WAIVED WHEN THE ELEVATION DIFFERENCE EXCEEDS ONE INCH.

THE SAME CRITERIA STATED ABOVE SHALL APPLY TO DIFFERENCES IN ELEVATION AT THE BEGINNING OR END OF ANY MILLING ACTIVITIES, AS WELL AS ANY LONGITUDINAL JOINTS WITHIN THE LIMITS OF SIGNALIZED INTERSECTIONS.

ALL OTHER DIFFERENCES IN ELEVATION, AS WELL AS REMOVAL AND PAYMENT FOR APRONS SHALL BE PER INDEX 600.
5. TRAFFIC SHALL NOT BE ALLOWED ON ANY MILLED SURFACE UNLESS SPECIFICALLY DESIGNATED OTHERWISE.
6. EXISTING DRAINAGE STRUCTURES WITHIN THE CONSTRUCTION LIMITS SHALL REMAIN UNLESS OTHERWISE NOTED.
7. THE CONTRACTOR IS ADVISED THAT THE ENTIRE LENGTH OF THE PROJECT TRANSECTS THE TERRA CEIA PRESERVE STATE PARK CONSERVATION LANDS. NO CONSTRUCTION ACTIVITIES, INCLUDING STAGING AREAS, ARE TO BE LOCATED OUTSIDE THE EXISTING RIGHT-OF-WAY WITHIN THE BOUNDARY OF THE STATE PARK. PLEASE CONTACT MARK SCHULZ, DISTRICT ONE ENVIRONMENTAL MANAGEMENT OFFICE, AT 863-519-2357 FOR ADDITIONAL INFORMATION.

CONSTRUCTION PRECAUTIONS FOR THE EASTERN INDIGO SNAKE

THE EASTERN INDIGO SNAKE (DRYMARCHON CORAIS COUPER) COULD BE PRESENT IN THE PROJECT AREA. IN ORDER TO MINIMIZE HARM TO THIS SPECIES, THE FDOT HAS COMMITTED TO IMPLEMENT THE FOLLOWING PROTECTION MEASURES:

- A. PROVIDE EASTERN INDIGO SNAKE EDUCATIONAL INFORMATION TO EMPLOYEES PRIOR TO THE INITIATION OF ANY CLEARING OR CONSTRUCTION ACTIVITIES. AN EDUCATIONAL EXHIBIT THAT HAS BEEN APPROVED BY USFWS SHALL BE POSTED CONSPICUOUSLY AT A SITE ACCESSIBLE TO ALL EMPLOYEES AND A HANDOUT WILL BE DISTRIBUTED TO EMPLOYEES.
- B. THE CONTRACTOR SHALL POST AND DISTRIBUTE EDUCATIONAL INFORMATION TO ALL ITS WORKERS. THE EXHIBIT AND BROCHURES SHALL INCLUDE PHOTOGRAPHS OF THE EASTERN INDIGO SNAKE, INFORMATION ON LIFE HISTORY, AND LEGAL PROTECTION OF THE SPECIES IN FLORIDA, AND HOW TO AVOID IMPACTS TO THE SPECIES. THIS MATERIAL SHALL BE SUPPLIED TO THE CONTRACTOR BY THE CONSTRUCTION ENVIRONMENTAL LIAISON AT THE PRE-CONSTRUCTION CONFERENCE.

THE CONTRACTOR, IN COORDINATION WITH THE FDOT CONSTRUCTION PROJECT MANAGER, SHALL ALSO BE RESPONSIBLE FOR DEVELOPING AND CARRYING OUT ANY MANAGEMENT PLAN(S)/AGREEMENT(S) WITH APPROPRIATE REGULATORY AGENCIES DUE TO THE OCCURENCE OF UNEXPECTED SPECIES. SUCH SPECIES OR ANY OTHER PROTECTED SPECIES NOT MENTIONED ABOVE THAT ARE IDENTIFIED DURING THE CONSTRUCTION OF THE PROJECT WHICH WAS NOT PREVIOUSLY IDENTIFIED DURING THE PRE-CONSTRUCTION SURVEY. THE MANAGEMENT PLAN(S)/AGREEMENT(S) WOULD ALLOW FOR CONSTRUCTION TO OCCUR THAT DOES NOT "ADVERSELY AFFECT OR JEOPARDIZE" THE SPECIES IN ACCORDANCE WITH THE ENDANGERED SPECIES ACT. THE CONTRACTOR, IN COORDINATION WITH THE FDOT CONSTRUCTION PROJECT MANAGER, SHALL ALSO BE RESPONSIBLE FOR MAKING ANY MODIFICATIONS TO THE PROPOSED MANAGEMENT PLAN(S)/AGREEMENT(S) TO ASSURE LISTED SPECIES REMAIN UNAFFECTED WITH THE APPROPRIATE REGULATORY AGENCIES.

CONSTRUCTION PRECAUTIONS FOR THE FLORIDA SANDHILL CRANE

THE PROJECT EXISTS IN AN AREA POTENTIALLY UTILIZED BY NESTING SANDHILL CRANES. THE CONTRACTOR MUST HAVE A QUALIFIED BIOLOGIST, APPROVED BY FDOT, TO LOCATE ANY ACTIVE SANDHILL CRANE NEST(S) WITHIN THE VICINITY OF THE PROJECT LIMITS PRIOR TO COMMENCEMENT OF AND THROUGHOUT THE DURATION OF ANY CONSTRUCTION.

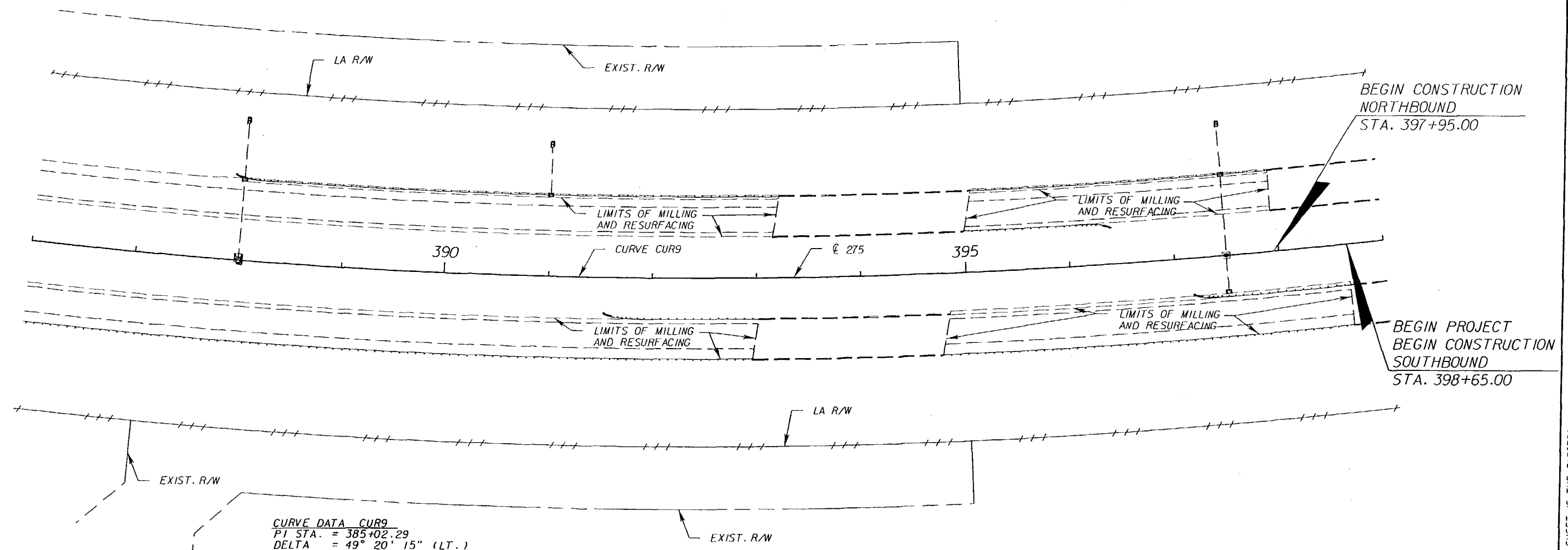
NO CONSTRUCTION IS TO OCCUR WITHIN 400 FEET OF THE SANDHILL CRANE NEST(S) LOCATION DURING THE INITIAL AND SUBSEQUENT NESTING SEASONS (JANUARY THROUGH JULY). IF AN ACTIVE CRANE NEST(S) IS LOCATED WITHIN 400 FEET OF THE PROJECT LIMITS, THE CONTRACTOR, IN COORDINATION WITH THE FDOT CONSTRUCTION PROJECT MANAGER, SHALL CONTACT THE FLORIDA FISH AND WILDLIFE CONSERVATION COMMISSION IMMEDIATELY FOR FURTHER INSTRUCTION. CONSTRUCTION ACTIVITIES WITHIN 400 FEET OF THE NEST SHALL CEASE UNTIL APPROVAL IS RECEIVED FROM THE FDOT CONSTRUCTION PROJECT MANAGER. IT WILL BE THE CONTRACTOR'S RESPONSIBILITY TO PERFORM ANY ADDITIONAL MONITORING OR OTHER ACTIVITIES REQUIRED BY THE WILDLIFE AGENCY AT THEIR OWN EXPENSE.

THE CONTRACTOR SHALL INCLUDE ALL COSTS ASSOCIATED WITH CONSTRUCTION SEQUENCING TO AVOID ACTIVE NEST SITES AND MONITORING OF NEST SITES IN THEIR LUMP SUM BID FOR THIS PROJECT. THE CONTRACTOR, IN COORDINATION WITH THE FDOT CONSTRUCTION PROJECT MANAGER, SHALL ALSO BE RESPONSIBLE FOR DEVELOPING AND CARRYING OUT ANY MANAGEMENT PLAN(S)/AGREEMENT(S) WITH APPROPRIATE REGULATORY AGENCIES DUE TO THE OCCURRENCE OF UNEXPECTED SPECIES. SUCH SPECIES ARE ANY OTHER PROTECTED SPECIES NOT MENTIONED ABOVE THAT ARE IDENTIFIED DURING THE CONSTRUCTION OF THE PROJECT WHICH WERE NOT PREVIOUSLY IDENTIFIED DURING THE PRE-CONSTRUCTION SURVEY. THE MANAGEMENT PLAN(S)/AGREEMENT(S) WOULD ALLOW FOR CONSTRUCTION TO OCCUR THAT DOES NOT "ADVERSELY AFFECT OR JEOPARDIZE" THE SPECIES IN ACCORDANCE WITH THE ENDANGERED SPECIES ACT. THE CONTRACTOR, IN COORDINATION WITH THE FDOT CONSTRUCTION PROJECT MANAGER, SHALL ALSO BE RESPONSIBLE FOR MAKING ANY MODIFICATIONS TO THE PROPOSED MANAGEMENT PLAN(S)/AGREEMENT(S) TO ASSURE LISTED SPECIES REMAIN UNAFFECTED WITH THE APPROPRIATE REGULATORY AGENCIES.

REVISIONS						ROADWAY ENGINEER OF RECORD: EDUARDO A. PONCE, P.E. (56818) FLORIDA DEPARTMENT OF TRANSPORTATION 801 N BROADWAY AVENUE P.O. BOX 1249 BARTON, FLORIDA 33830-3809/33831-1249	STATE OF FLORIDA DEPARTMENT OF TRANSPORTATION			SHEET NO. 9
DATE	BY	DESCRIPTION	DATE	BY	DESCRIPTION		ROAD NO.	COUNTY	FINANCIAL PROJECT ID	
						93	MANATEE	420241-1-52-01		

GENERAL NOTES

NOTICE: THE OFFICIAL RECORD OF THIS SHEET IS THE ELECTRONIC FILE SIGNED AND SEALED UNDER RULE 61G5-23.003, F.A.C.



CURVE DATA CUR9
 PI STA. = 385+02.29
 DELTA = 49° 20' 15" (LT.)
 D = 1° 00' 00"
 T = 2,631.53
 L = 4,933.75
 R = 5,729.58
 PC STA. = 358+70.77
 PT STA. = 408+04.52
 e = 0.04

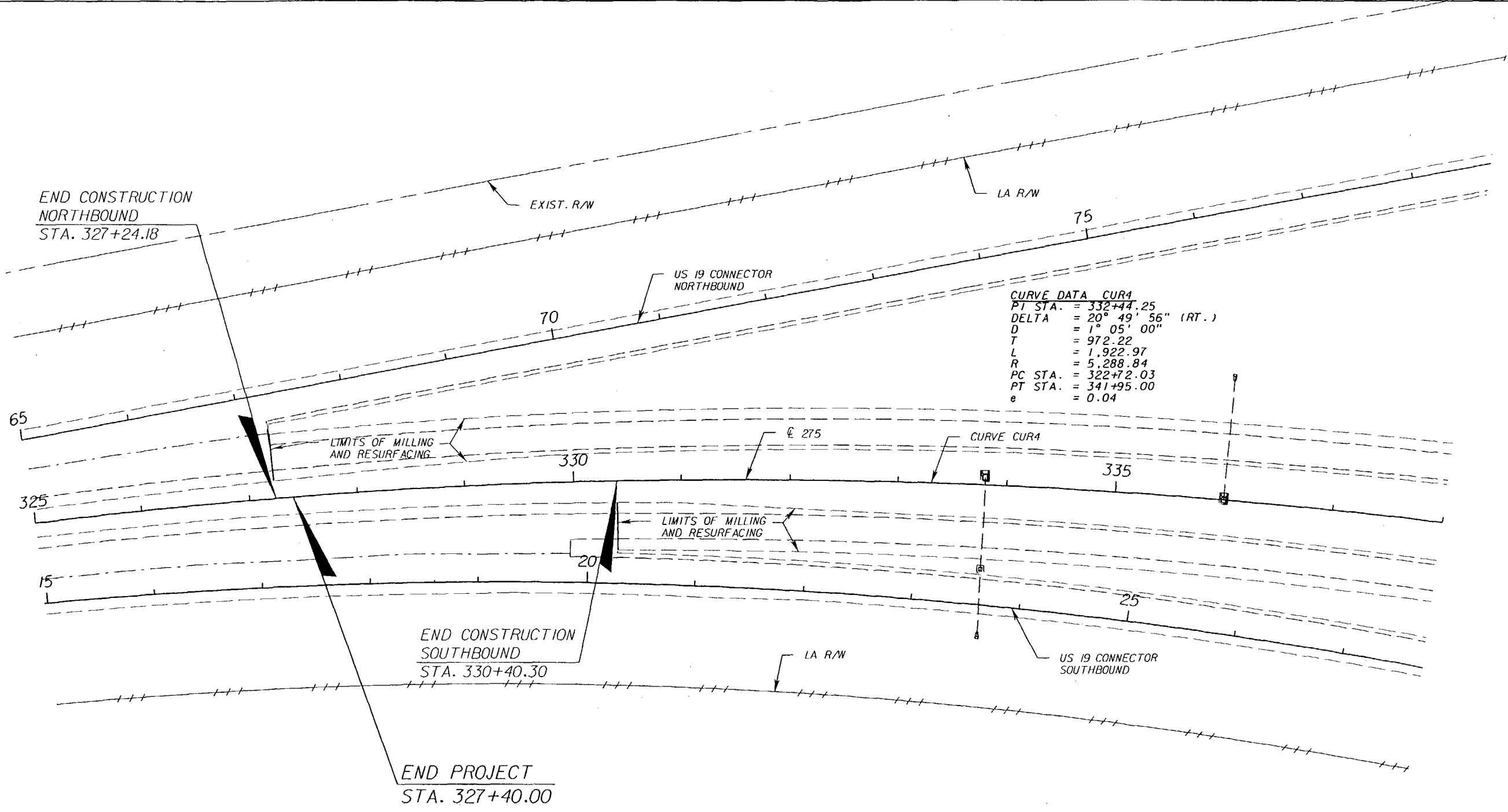
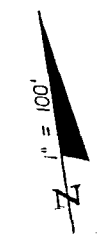
BEGIN CONSTRUCTION
 NORTHBOUND
 STA. 397+95.00

BEGIN PROJECT
 BEGIN CONSTRUCTION
 SOUTHBOUND
 STA. 398+65.00

NOTICE: THE OFFICIAL RECORD OF THIS SHEET IS THE ELECTRONIC FILE SIGNED AND SEALED UNDER RULE 6G15-23.003, F.A.C.

REVISIONS						ROADWAY ENGINEER OF RECORD: EDUARDO A. PONCE, P.E. (15681B) FLORIDA DEPARTMENT OF TRANSPORTATION 801 N BROADWAY AVENUE P.O. BOX 1249 BARTON, FLORIDA 33830-3809/33831-1249	STATE OF FLORIDA DEPARTMENT OF TRANSPORTATION			SHEET NO. 10
DATE	BY	DESCRIPTION	DATE	BY	DESCRIPTION		ROAD NO.	COUNTY	FINANCIAL PROJECT ID	
						93	MANATEE	420241-1-52-01		

PLAN SHEET



CURVE DATA CUR4
 PT STA. = 332+44.25
 DELTA = 20° 49' 56" (RT.)
 D = 1° 05' 00"
 T = 972.22
 L = 1,922.97
 R = 5,288.84
 PC STA. = 322+72.03
 PT STA. = 341+95.00
 e = 0.04

NOTICE: THE OFFICIAL RECORD OF THIS SHEET IS THE ELECTRONIC FILE SIGNED AND SEALED UNDER RULE 61G15-23.003, F.A.C.

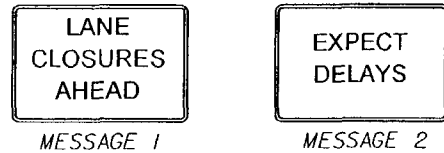
REVISIONS						ROADWAY ENGINEER OF RECORD: EDUARDO A. PONCE, P.E. (56818) FLORIDA DEPARTMENT OF TRANSPORTATION 801 N BROADWAY AVENUE P.O. BOX 1249 BARTON, FLORIDA 33830-3809/33831-1249	STATE OF FLORIDA DEPARTMENT OF TRANSPORTATION			SHEET NO. 11
DATE	BY	DESCRIPTION	DATE	BY	DESCRIPTION		ROAD NO.	COUNTY	FINANCIAL PROJECT ID	
						93	MANATEE	420241-1-52-01	PLAN SHEET	

GENERAL NOTES

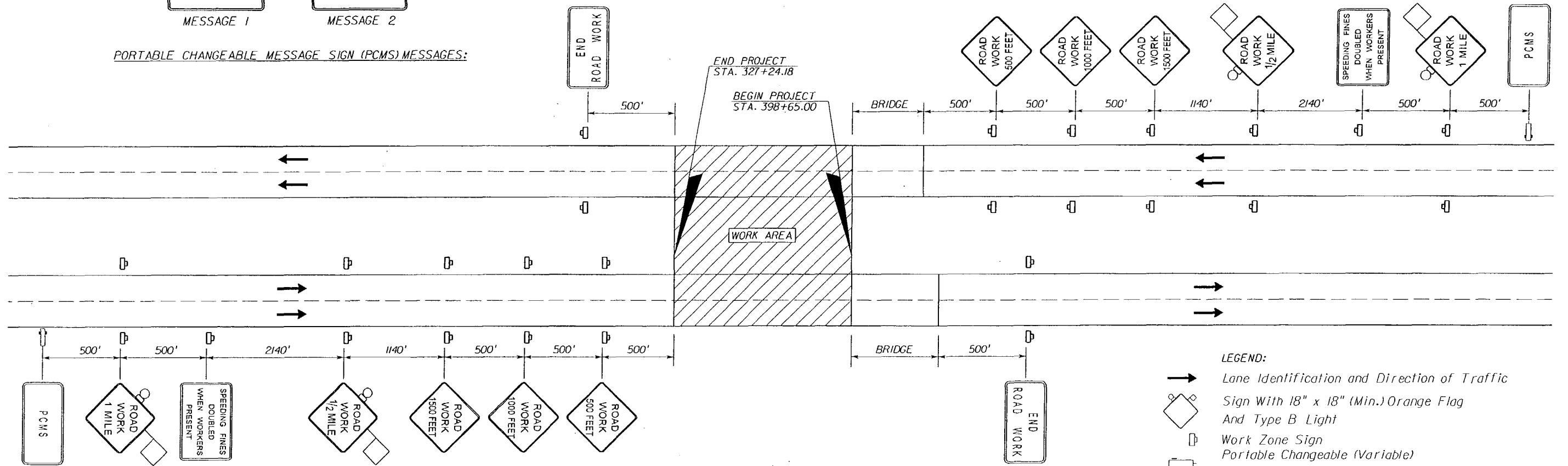
1. EXISTING POSTED SPEED SHALL BE MAINTAINED.
FROM BEGIN PROJECT TO MP 4.75 - 70 MPH
FROM MP 4.75 TO END PROJECT - 65 MPH
2. LANE CLOSURES RESTRICTIONS:
NO LANE CLOSURES PERMITTED FROM 6:00 AM TO 7:00 PM.
LANE CLOSURES ARE NOT PERMITTED IN INACTIVE WORK ZONES.
3. ALL DROPOFFS CREATED DURING CONSTRUCTION SHALL BE BROUGHT INTO COMPLIANCE WITH INDEX 600 AT THE END OF EACH WORK DAY.
4. REFERENCE THE FOLLOWING NOTES ON THE GENERAL NOTES SHEET:
4. TEMPORARY ASPHALT APRONS
5. TRAFFIC ON MILLED SURFACES
5. THIS PROJECT SHALL UTILIZE DESIGN STANDARDS, INDEX 670, MOTORIST AWARENESS SYSTEM (MAS).

MAINTENANCE OF TRAFFIC

- MILLING AND RESURFACING THROUGH LANES, SHOULDERS:**
MAINTAIN TRAFFIC IN ACCORDANCE WITH DESIGN STANDARDS, INDEX 613.
- GUARDRAIL WORK:**
MAINTAIN TRAFFIC IN ACCORDANCE WITH DESIGN STANDARDS, INDEX 612.
- PAVEMENT MARKINGS:**
MAINTAIN TRAFFIC IN ACCORDANCE WITH DESIGN STANDARDS, INDEX 619.
- SIGNING WORK:**
MAINTAIN TRAFFIC IN ACCORDANCE WITH DESIGN STANDARDS, INDEX 612



PORTABLE CHANGEABLE MESSAGE SIGN (PCMS) MESSAGES:



ADVANCE WARNING SIGN LAYOUT
NTS

NOTE: DIMENSIONS MAY BE ADJUSTED TO SUIT FIELD CONDITIONS.

- LEGEND:**
- Lane Identification and Direction of Traffic
 - ◊ Sign With 18" x 18" (Min.) Orange Flag And Type B Light
 - Work Zone Sign
 - ▭ Portable Changeable (Variable) Message Sign

REVISIONS						ROADWAY ENGINEER OF RECORD: EDUARDO A. PONCE, P.E. (56818) FLORIDA DEPARTMENT OF TRANSPORTATION BOIN BROADWAY AVENUE P.O. BOX 1249 BARTON, FLORIDA 33830-3809/33831-1249	STATE OF FLORIDA DEPARTMENT OF TRANSPORTATION			SHEET NO. 12
DATE	BY	DESCRIPTION	DATE	BY	DESCRIPTION		ROAD NO.	COUNTY	FINANCIAL PROJECT ID	
						93	MANATEE	420241-1-52-01		

NOTICE: THE OFFICIAL RECORD OF THIS SHEET IS THE ELECTRONIC FILE SIGNED AND SEALED UNDER RULE 61G5-23.003, F.A.C.