

CONTRACT PLANS COMPONENTS

ROADWAY
SIGNING AND PAVEMENT MARKING

**STATE OF FLORIDA
DEPARTMENT OF TRANSPORTATION**

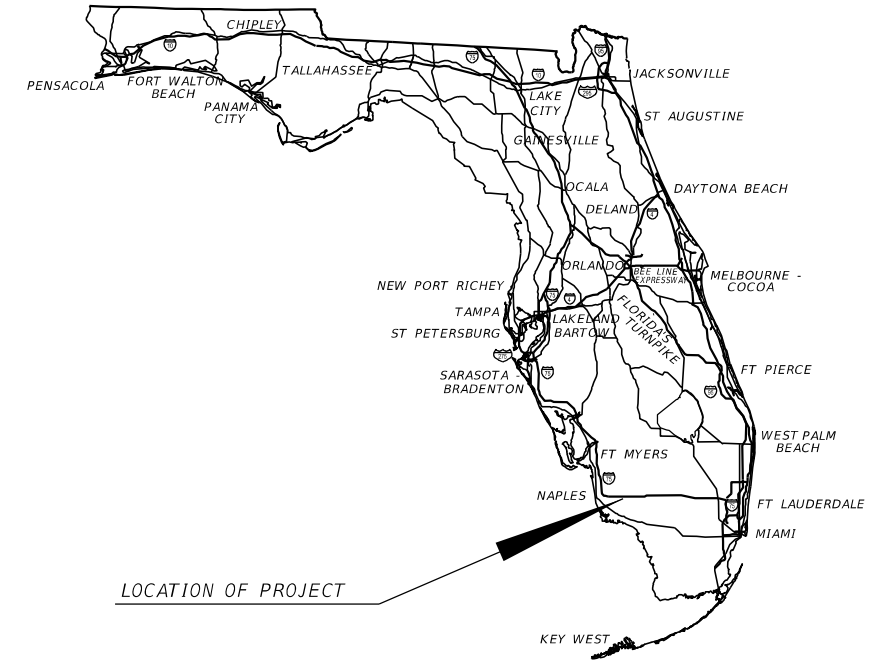
ROADWAY PLANS

FINANCIAL PROJECT ID 448929-1-52-01

COLLIER COUNTY (03080)

STATE ROAD NO. 29

N OF WAGON WHEEL RD TO S OF I-75



LOCATION OF PROJECT

INDEX OF ROADWAY PLANS

SHEET NO.	SHEET DESCRIPTION
1	KEY SHEET
2 - 3	TYPICAL SECTIONS
4	CURVE DATA
5-8	PROJECT CONTROL
9	GENERAL NOTES
10 - 17	ROADWAY PLANS
18	TEMPORARY TRAFFIC CONTROL PLAN

PROJECT LOCATION URL: <https://tinyurl.com/5n82mzra>

PROJECT LIMITS: BEGIN MP 9.015 - END MP 13.218

EXCEPTIONS: NONE

BRIDGE LIMITS: BR#030299 MP 9.435 - MP 9.457

RAILROAD CROSSING: NONE

THIS ITEM HAS BEEN DIGITALLY
SIGNED AND SEALED BY

ON THE DATE ADJACENT TO THE SEAL
PRINTED COPIES OF THIS DOCUMENT ARE
NOT CONSIDERED SIGNED AND SEALED
AND THE SIGNATURE MUST BE VERIFIED
ON ANY ELECTRONIC COPIES.

**ROADWAY PLANS
ENGINEER OF RECORD:**

HERNAN A. LUGO, P.E.
P.E. LICENSE NUMBER 74961
HBC ENGINEERING COMPANY
5200 NW 33 AVE, SUITE 211
FT. LAUDERDALE, FL 33309
CONTRACT NO.: CAN28
VENDOR NO.: 22-3936061

FDOT PROJECT MANAGER:

CHRISTOPHER SPEESE

GOVERNING STANDARD PLANS:

Florida Department of Transportation, FY 2024-25 Standard Plans for Road and Bridge Construction and applicable Interim Revisions (IRs).

Standard Plans for Road Construction and associated IRs are available at the following website: <http://www.fdot.gov/design/standardplans>

APPLICABLE IRs: IR - -

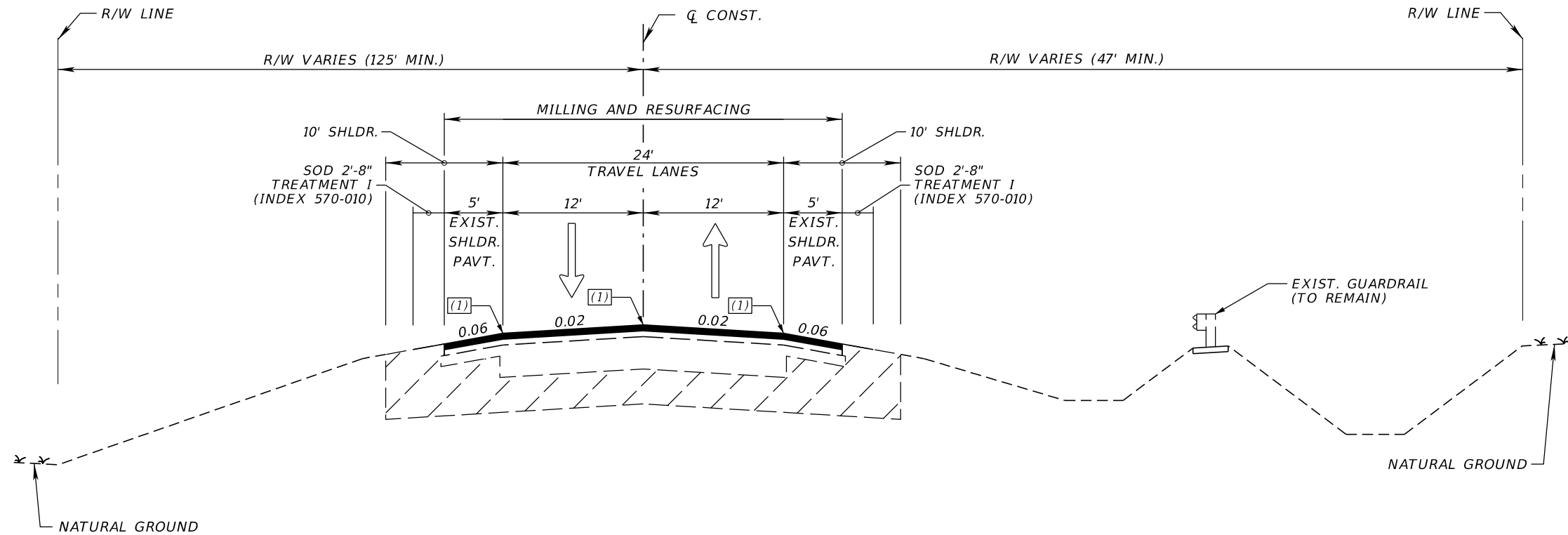
Standard Plans for Bridge Construction are included in the Structures Plans Component

GOVERNING STANDARD SPECIFICATIONS:

Florida Department of Transportation, FY 2024-25 Standard Specifications for Road and Bridge Construction at the following website: <http://www.fdot.gov/programmanagement/Implemented/SpecBooks>

DRAFT
Subject to Change Per
Department Review

CONSTRUCTION CONTRACT NO.	FISCAL YEAR	SHEET NO.
	25	1



**TYPICAL SECTION
SR 29**
STA. 476+24.92 TO STA. 498+27.65 (BEGIN BRIDGE)
STA. 499+47.46 (END BRIDGE) TO 697+96.96

(1) GROUND-IN RUMBLE STRIPING

TRAFFIC DATA

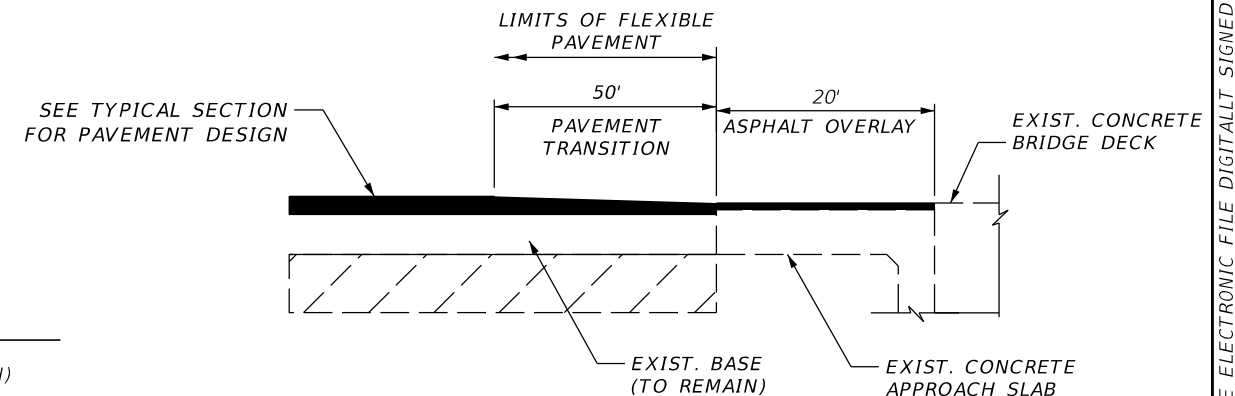
CURRENT YEAR = 2019 AADT = 1350
 ESTIMATED OPENING YEAR = 2025 AADT = 1400
 ESTIMATED DESIGN YEAR = 2045 AADT = 1900
 K = 9.5% D = 56.4% T = 24.3% (24 HOUR)
 DESIGN HOUR T = 12.15%
 DESIGN SPEED = 70 MPH
 POSTED SPEED = 60 MPH
 TARGET SPEED = 60 MPH
 CONTEXT CLASSIFICATION = C1 RURAL

TRAVEL LANES

MILL EXISTING ASPHALT PAVEMENT (1½" AVG. DEPTH)
 FRICTION COURSE FC-12.5 (TRAFFIC C) (1½") (PG 76-22)

SHOULDERS

MILL EXISTING ASPHALT PAVEMENT (1½" AVG. DEPTH)
 FRICTION COURSE FC-12.5 (TRAFFIC C) (1½") (PG 76-22)



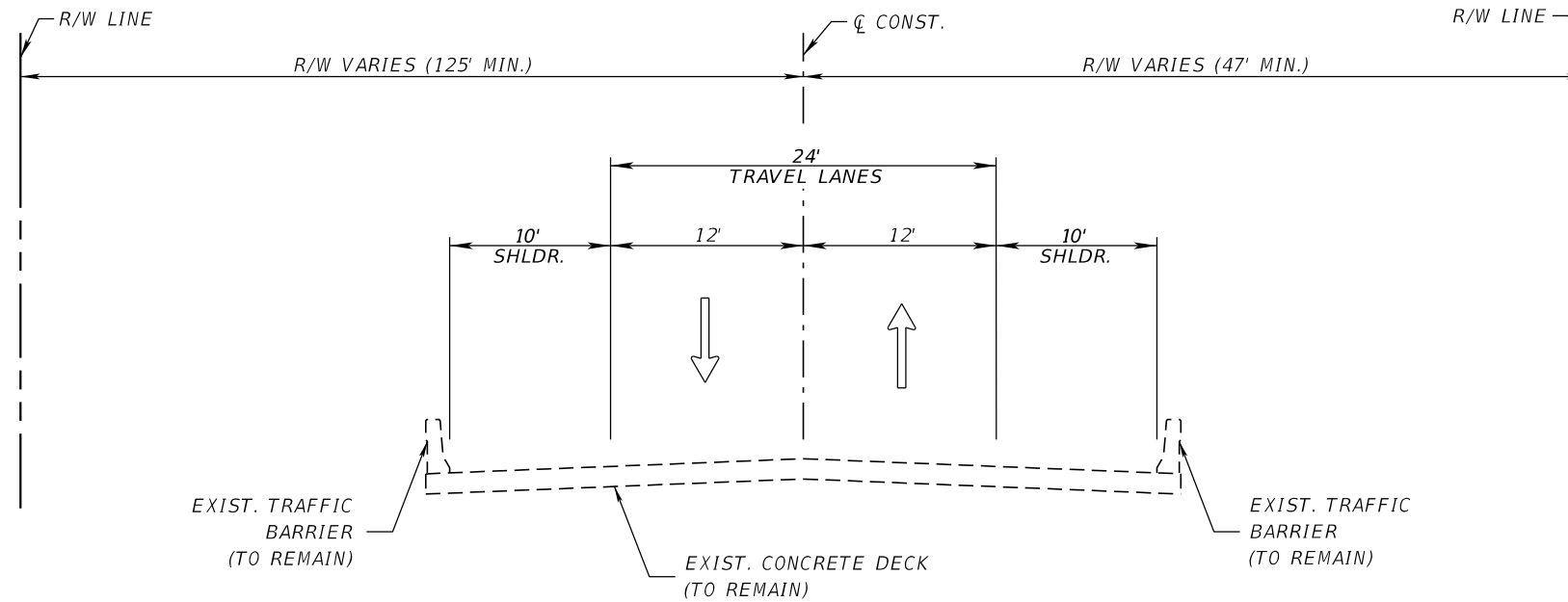
**DETAIL OF FLEXIBLE PAVEMENT TRANSITION
AT PAVED APPROACH SLABS
N.T.S.**

1/19/2024 3:43:37 PM D01512 P:\020230500381 SR-29 From Wagon Rd to I-75\448929\201\Roadway\TYPSECD01.dgn

THE OFFICIAL RECORD OF THIS SHEET IS THE ELECTRONIC FILE DIGITALLY SIGNED AND SEALED UNDER RULE 61G15-23.004, F.A.C.

REVISIONS				ENGINEER OF RECORD		STATE OF FLORIDA DEPARTMENT OF TRANSPORTATION			SHEET NO.
DATE	DESCRIPTION	DATE	DESCRIPTION	HERNAN A. LUGO, P.E. LICENSE NUMBER: 74961 HBC ENGINEERING COMPANY 5200 NW 33 AVE, SUITE 211 FT. LAUDERDALE, FL 33309		ROAD NO.	COUNTY	FINANCIAL PROJECT ID	
						SR 29	COLLIER	448929-1-52-01	2

TYPICAL SECTIONS



TYPICAL SECTION
SR 29
BRIDGE NO. 030299
STA. 498+27.65 TO STA. 499+47.46

TRAFFIC DATA

CURRENT YEAR = 2019 AADT = 1350
 ESTIMATED OPENING YEAR = 2025 AADT = 1400
 ESTIMATED DESIGN YEAR = 2045 AADT = 1900
 K = 9.5% D = 56.4% T = 24.3% (24 HOUR)
 DESIGN HOUR T = 12.15%
 DESIGN SPEED = 70 MPH
 POSTED SPEED = 60 MPH
 TARGET SPEED = 60 MPH
 CONTEXT CLASSIFICATION = C1 RURAL

1/19/2024 3:43:38 PM D01512 P:\020230500381 SR-29 From Wagon Rd to I-75\448929\201\Roadway\TYP\SRD01.dgn

REVISIONS				ENGINEER OF RECORD		STATE OF FLORIDA DEPARTMENT OF TRANSPORTATION			TYPICAL SECTIONS	SHEET NO.
DATE	DESCRIPTION	DATE	DESCRIPTION	HERNAN A. LUGO, P.E. LICENSE NUMBER: 74961 HBC ENGINEERING COMPANY 5200 NW 33 AVE, SUITE 211 FT. LAUDERDALE, FL 33309		ROAD NO.	COUNTY	FINANCIAL PROJECT ID		3
								SR 29		COLLIER

THE OFFICIAL RECORD OF THIS SHEET IS THE ELECTRONIC FILE DIGITALLY SIGNED AND SEALED UNDER RULE 61G15-23.004, F.A.C.

1/19/2024 3:43:45 PM D01512 \\192.168.1.21\Projects\20230500381 SR-29 From Wagon Rd to I-75\44892915201\Roadway\CURC\RD01.dgn

CURVE DATA - CENTERLINE OF CONSTRUCTION*											
CURVE NO.	LINE	P.C. STATION	P.I. STATION	P.T. STATION	Δ	D	T	L	R	e	DESIGN SPEED
C-1	CL	478+38.16	485+58.65	492+71.53	14°25'00" (LT)	01° 00' 21"	720.49	1433.37	5696.58	0.037	70 MPH
C-2	CL	503+26.25	509+04.84	514+68.42	22°35'00" (RT)	01° 58' 38"	578.60	1142.17	2897.79	0.071	70 MPH
C-3	CL	523+90.18	525+85.26	527+78.94	11°52'05" (LT)	03° 03' 10"	195.08	388.76	1876.86	0.097	70 MPH

*GEOMETRY TO MATCH EXISTING ALIGNMENT

REVISIONS				ENGINEER OF RECORD		STATE OF FLORIDA DEPARTMENT OF TRANSPORTATION			CURVE DATA	SHEET NO.
DATE	DESCRIPTION	DATE	DESCRIPTION	HERNAN A. LUGO, P.E. LICENSE NUMBER: 74961 HBC ENGINEERING COMPANY 5200 NW 33 AVE, SUITE 211 FT. LAUDERDALE, FL 33309		ROAD NO.	COUNTY	FINANCIAL PROJECT ID		4
						SR 29	COLLIER	448929-1-52-01		

THE OFFICIAL RECORD OF THIS SHEET IS THE ELECTRONIC FILE DIGITALLY SIGNED AND SEALED UNDER RULE 61G15-23.004, F.A.C.

PROJECT CONTROL POINTS

STATE ROAD 29
ROADWAY ID: 3080-000
COLLIER COUNTY

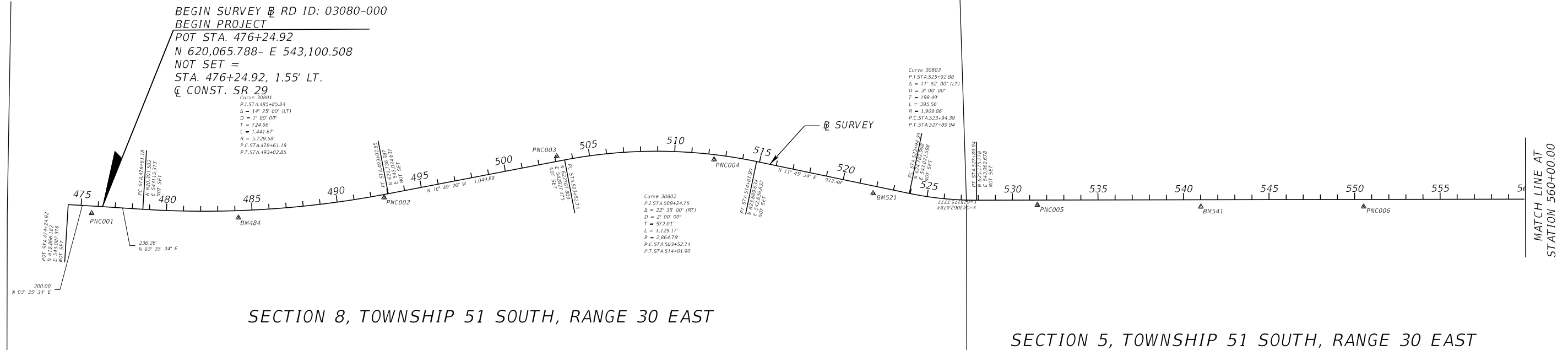
FROM: NORTH OF WAGON WHEEL ROAD MP 9.015 - STA. 476+24.92 B SURVEY
TO: SOUTH OF I-75 MP 13.218 - STA. 698+12.00 B SURVEY
LENGTH: 4.2 MILES

TRAVERSING THROUGH SECTIONS 6,7 TOWNSHIP 51 SOUTH, RANGE 30 EAST AND
SECTIONS 19, 20, 30, 29, 31, 32 TOWNSHIP 50 SOUTH, RANGE 30 EAST.



SECTION 7, TOWNSHIP 51 SOUTH, RANGE 30 EAST

SECTION 6, TOWNSHIP 51 SOUTH, RANGE 30 EAST



SECTION 8, TOWNSHIP 51 SOUTH, RANGE 30 EAST

SECTION 5, TOWNSHIP 51 SOUTH, RANGE 30 EAST

SURVEYORS NOTES:

- BEARINGS AND COORDINATES ARE RELATIVE TO THE STATE PLANE COORDINATES, FLORIDA EAST ZONE (0901), NORTH AMERICAN DATUM (NAD) OF 1983 (ADJUSTMENT OF 2010) A BEARING OF N 12°00'16" E HAS BEEN ESTABLISHED BETWEEN MONUMENTS PNC-004 STAMPED "PNC004" & PNC-BM521 STAMPED "PNC521"
- VERTICAL DATUM : NORTH AMERICAN VERTICAL DATUM 1988 (NAVD 88)
- A TRAVERSE METHOD AND A GLOBAL POSITIONING SYSTEM STATIC METHOD WAS USED TO ESTABLISH THE HORIZONTAL POSITIONS OF THE PRIMARY CONTROL POINTS USED FOR THIS PROJECT.
- SHOWN ALIGNMENT WAS REPROPROJECT FROM FDOT PROJECT F.A. NO. F-391-1(3) SECTION 03080-2513, DATE 06-30-1981; AS WELL AS AS RECOVERED FOUND MONUMENTS POINTS ALONG STATE ROAD 29 SOUTH OF INTERSTATE I-75.
- THE BASELINE WAS NOT SET IN THE FIELD AT THE TIME OF SURVEY
- PROJECT UNITS ARE U.S. SURVEY FEET.
- FIELD BOOK REFERENCES : 504993, 504994, 504996 AND 504998

LIMITS FROM: S.R. 29
FROM: NORTH OF WHEEL WAGON
TO: SOUTH OF I-75

B	: BASELINE
E	: EAST
F.P. ID.	: FINANCIAL PROJECT IDENTIFICATION
FDOT	: FLORIDA DEPARTMENT OF TRANSPORTATION
LT	: LEFT
PC	: POINT OF CURVATURE
PI	: POINT OF INTERSECTION
POT	: POINT ON TANGENT
RT	: RIGHT
N.	: NORTH
S.	: SOUTH
S.R.	: STATE ROAD
STA.	: STATION
△	: PNC POINT
W	: WEST

1/19/2024 3:44:04 PM D01512 \\192.168.1.21\Projects\5\020230500381 SR-29 From Wagon Rd to I-75\44892915201\Survey\CTLSRD01.dgn

THE OFFICIAL RECORD OF THIS SHEET IS THE ELECTRONIC FILE DIGITALLY SIGNED AND SEALED UNDER RULE 61G15-23.004, F.A.C.

REVISIONS		ENGINEER OF RECORD		STATE OF FLORIDA DEPARTMENT OF TRANSPORTATION			SHEET NO.
DATE	DESCRIPTION	DATE	DESCRIPTION	ROAD NO.	COUNTY	FINANCIAL PROJECT ID	
				SR 29	COLLIER	448929-1-52-01	PROJECT CONTROL 5

HERNAN A. LUGO, P.E.
LICENSE NUMBER: 74961
HBC ENGINEERING COMPANY
5200 NW 33 AVE, SUITE 211
FT. LAUDERDALE, FL 33309

PROJECT CONTROL POINTS

STATE ROAD 29
ROADWAY ID: 3080-000
COLLIER COUNTY

NAVD 88

NOT TO SCALE

FROM: NORTH OF WAGON WHEEL ROAD MP 9.015 - STA. 476+24.92 SURVEY
TO: SOUTH OF I-75 MP 13.218 - STA. 698+12.00 SURVEY
LENGTH: 4.2 MILES

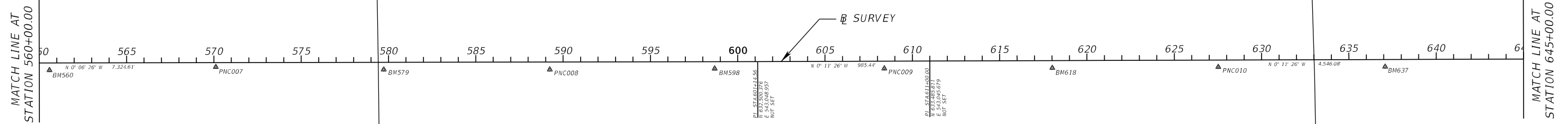
TRAVERSING THROUGH SECTIONS 5, 6, 7, 8 TOWNSHIP 51 SOUTH, RANGE 30 EAST AND
SECTIONS 19, 20, 30, 29, 31, 32 TOWNSHIP 50 SOUTH, RANGE 30 EAST.

SECTION 6,
TOWNSHIP 51 SOUTH,
RANGE 30 EAST

SECTION 31, TOWNSHIP 50 SOUTH, RANGE 30 EAST

SECTION 5,
TOWNSHIP 51 SOUTH,
RANGE 30 EAST

SECTION 32, TOWNSHIP 50 SOUTH, RANGE 30 EAST



1/19/2024 3:44:11 PM D01512 \\192.168.1.21\Projects\520230500381 SR-29 From Wagon Rd to I-75\44892915201\Survey\CTLSRD02.dgn

THE OFFICIAL RECORD OF THIS SHEET IS THE ELECTRONIC FILE DIGITALLY SIGNED AND SEALED UNDER RULE 61G15-23.004, F.A.C.

REVISIONS				ENGINEER OF RECORD			STATE OF FLORIDA DEPARTMENT OF TRANSPORTATION			SHEET NO.
DATE	DESCRIPTION	DATE	DESCRIPTION	HERNAN A. LUGO, P.E. LICENSE NUMBER: 74961 HBC ENGINEERING COMPANY 5200 NW 33 AVE, SUITE 211 FT. LAUDERDALE, FL 33309			ROAD NO.	COUNTY	FINANCIAL PROJECT ID	
							SR 29	COLLIER	448929-1-52-01	PROJECT CONTROL 6

PROJECT CONTROL POINTS

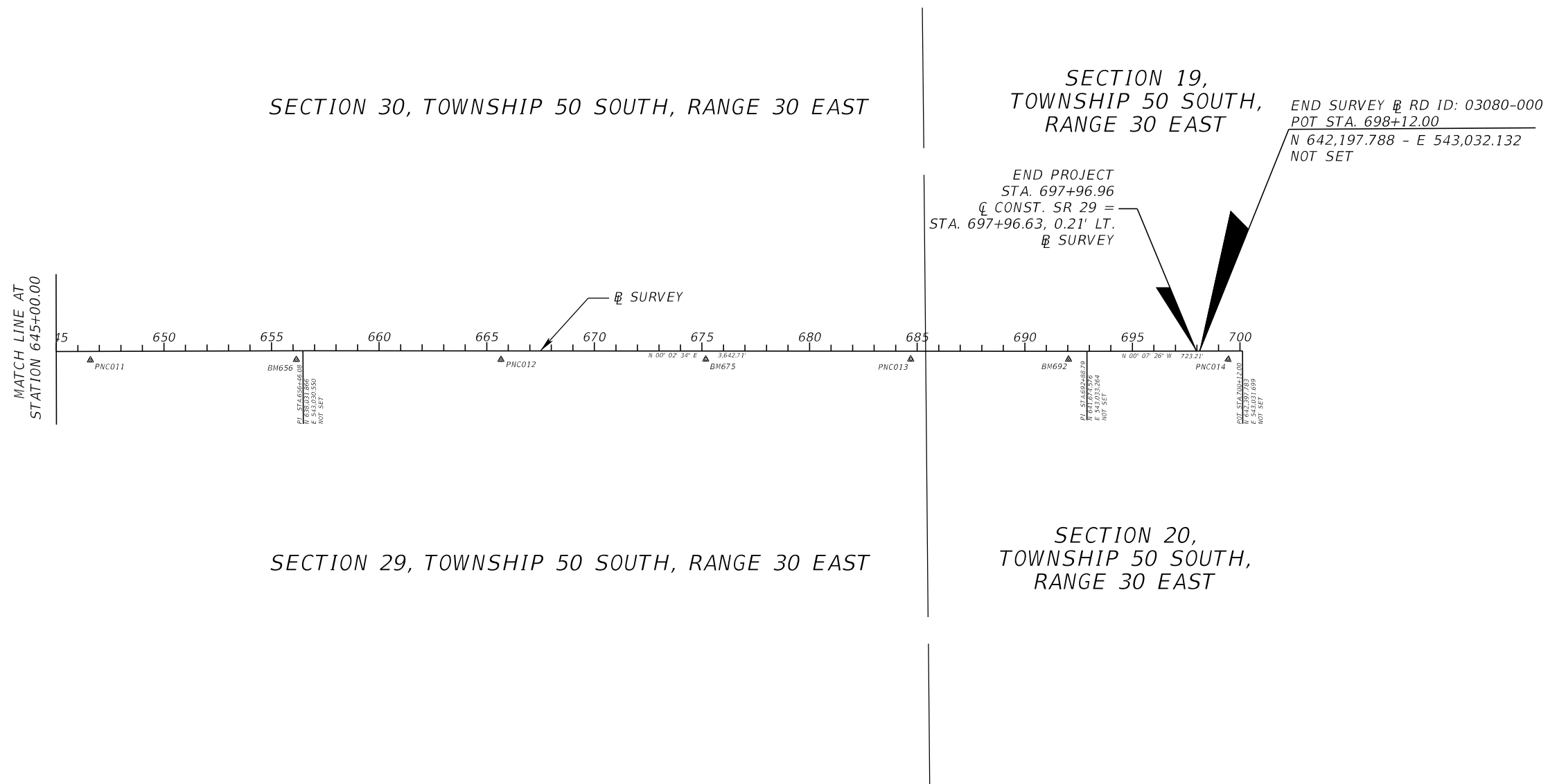
STATE ROAD 29
ROADWAY ID: 3080-000
COLLIER COUNTY

NAVD 88



FROM: NORTH OF WAGON WHEEL ROAD MP 9.015 - STA. 476+24.92 \mathcal{B} SURVEY
TO: SOUTH OF I-75 MP 13.218 - STA. 698+12.00 \mathcal{B} SURVEY
LENGTH: 4.2 MILES

TRAVERSING THROUGH SECTIONS 6,7 TOWNSHIP 51 SOUTH, RANGE 30 EAST AND
SECTIONS 19, 20, 30, 29, 31, 32 TOWNSHIP 50 SOUTH, RANGE 30 EAST.



1/19/2024 3:44:18 PM D01512 \\192.168.1.21\Projects\520230500381 SR-29 From Wagon Rd to I-75\44892915201\Survey\CTLSRD03.dgn

THE OFFICIAL RECORD OF THIS SHEET IS THE ELECTRONIC FILE DIGITALLY SIGNED AND SEALED UNDER RULE 61G15-23.004, F.A.C.

REVISIONS				ENGINEER OF RECORD			STATE OF FLORIDA DEPARTMENT OF TRANSPORTATION			PROJECT CONTROL	SHEET NO.
DATE	DESCRIPTION	DATE	DESCRIPTION	HERNAN A. LUGO, P.E. LICENSE NUMBER: 74961 HBC ENGINEERING COMPANY 5200 NW 33 AVE, SUITE 211 FT. LAUDERDALE, FL 33309			ROAD NO.	COUNTY	FINANCIAL PROJECT ID		
							SR 29	COLLIER	448929-1-52-01		7

PROJECT CONTROL POINTS

STATE ROAD 29
ROADWAY ID: 3080-000
COLLIER COUNTY

FROM: NORTH OF WAGON WHEEL ROAD MP 9.015 - STA. 476+24.92 SURVEY
TO: SOUTH OF I-75 MP 13.218 - STA. 698+12.00 SURVEY
LENGTH: 4.2 MILES

TRAVERSING THROUGH SECTIONS 6,7 TOWNSHIP 51 SOUTH, RANGE 30 EAST AND
SECTIONS 19, 20, 30, 29, 31, 32 TOWNSHIP 50 SOUTH, RANGE 30 EAST.

HORIZONTAL VERTICAL CONTROL

POINT NAME	(Y) NORTHING	(X) EASTING	SCALE FACTOR	LATITUDE	LONGITUDE	BASELINE STATION	OFFSET	(Z) ELEVATION	DESCRIPTION
PNC001	620002.8195	543138.8203	0.99995583	26°02' 20.2853"	81°20' 39.2536"	475+64.48	42.18'RT	11.218	SET ALUMINIUM DISC IN CONC. MONUMENT STAMPED "PNC001"
PNC014	642330.8607	543070.9998	0.99995584	26°06' 01.4349"	81°20' 40.6443"	699+44.99	39.16'RT	11.601	SET ALUMINIUM DISC IN CONC. MONUMENT STAMPED "PNC014"
PNC004	623641.4708	542824.9039	0.99995591	26°02' 56.3168"	81°20' 42.8009"	512+33.79	28.46'RT	11.157	SET ALUMINIUM DISC IN CONC. MONUMENT STAMPED "PNC004"
PNC006	627438.7200	543099.9204	0.99995584	26°03' 33.9345"	81°20' 39.8953"	550+52.81	41.48'RT	11.211	SET ALUMINIUM DISC IN CONC. MONUMENT STAMPED "PNC006"
PNC008	631309.3515	543093.9464	0.99995584	26°04' 12.2716"	81°20' 40.0730"	589+23.45	42.76'LT	11.478	SET ALUMINIUM DISC IN CONC. MONUMENT STAMPED "PNC008"
PNC010	635137.8247	543079.6453	0.99995584	26°04' 50.1909"	81°20' 40.3408"	627+51.89	39.46'RT	11.455	SET ALUMINIUM DISC IN CONC. MONUMENT STAMPED "PNC010"
PNC012	638951.8947	543071.9841	0.99995584	26°05' 27.9676"	81°20' 40.5354"	665+66.14	40.75'RT	11.945	SET ALUMINIUM DISC IN CONC. MONUMENT STAMPED "PNC012"
PNC002	621712.5166	543046.8323	0.99995585	26°02' 37.2169"	81°20' 40.3117"	492+75.12	17.35'RT	14.948	SET ALUMINIUM DISC IN CONC. MONUMENT STAMPED "PNC002"
PNC003	622721.8602	542806.4956	0.99995590	26°02' 47.2078"	81°20' 42.9761"	503+11.55	29.23'LT	17.302	SET ALUMINIUM DISC IN CONC. MONUMENT STAMPED "PNC003"
PNC005	625531.3675	543090.3279	0.99995584	26°03' 15.0425"	81°20' 39.9453"	531+45.48	28.32'LT	11.326	SET ALUMINIUM DISC IN CONC. MONUMENT STAMPED "PNC005"
PNC007	629396.8612	543079.7288	0.99995584	26°03' 53.3287"	81°20' 40.1735"	570+10.99	24.96'LT	11.651	SET ALUMINIUM DISC IN CONC. MONUMENT STAMPED "PNC007"
PNC009	633225.3249	543088.0626	0.99995584	26°04' 31.2485"	81°20' 40.1930"	608+39.37	41.52'RT	11.105	SET ALUMINIUM DISC IN CONC. MONUMENT STAMPED "PNC009"
PNC011	637043.9871	543074.1193	0.99995584	26°05' 09.0706"	81°20' 40.4567"	646+58.06	40.28'RT	11.714	SET ALUMINIUM DISC IN CONC. MONUMENT STAMPED "PNC011"
PNC013	640856.0169	543069.8942	0.99995584	26°05' 46.8271"	81°20' 40.6136"	684+70.26	37.24'LT	11.456	SET ALUMINIUM DISC IN CONC. MONUMENT STAMPED "PNC013"
BM484	620860.6038	543164.3088	0.99995582	26°02' 28.7820"	81°20' 38.9990"	484+19.05	41.20'RT	10.854	SET ALUMINIUM DISC IN CONC. MONUMENT STAMPED "BM484"
BM521	624571.0363	543022.5638	0.99995586	26°03' 05.5290"	81°20' 40.6605"	521+86.90	43.16'RT	11.198	SET ALUMINIUM DISC IN CONC. MONUMENT STAMPED "BM521"
BM541	626487.1894	543100.7239	0.99995584	26°03' 24.5099"	81°20' 39.8590"	541+01.28	40.50'RT	11.291	SET ALUMINIUM DISC IN CONC. MONUMENT STAMPED "BM541"
BM560	628444.2966	543098.0468	0.99995584	26°03' 43.8943"	81°20' 39.9450"	560+58.39	41.49'RT	10.957	SET ALUMINIUM DISC IN CONC. MONUMENT STAMPED "BM560"
BM579	630358.3871	543094.3185	0.99995584	26°04' 02.8526"	81°20' 40.0413"	579+72.49	41.35'RT	11.386	SET ALUMINIUM DISC IN CONC. MONUMENT STAMPED "BM579"
BM598	632253.6147	543088.9409	0.99995584	26°04' 21.6240"	81°20' 40.1552"	598+67.72	39.52'RT	11.011	SET ALUMINIUM DISC IN CONC. MONUMENT STAMPED "BM598"
BM618	634187.1158	543085.1196	0.99995584	26°04' 40.7746"	81°20' 40.2532"	618+01.17	41.77'RT	11.458	SET ALUMINIUM DISC IN CONC. MONUMENT STAMPED "BM618"
BM637	636093.5209	543077.8719	0.99995584	26°04' 59.6566"	81°20' 40.3879"	637+07.58	40.87'RT	11.844	SET ALUMINIUM DISC IN CONC. MONUMENT STAMPED "BM637"
BM656	638001.1383	543071.8738	0.99995584	26°05' 18.5507"	81°20' 40.5091"	656+15.21	41.22'RT	11.717	SET ALUMINIUM DISC IN CONC. MONUMENT STAMPED "BM656"
BM675	639903.4182	543070.3778	0.99995584	26°05' 37.3920"	81°20' 40.5807"	675+17.66	38.43'RT	11.579	SET ALUMINIUM DISC IN CONC. MONUMENT STAMPED "BM675"
BM692	641589.1204	543070.8257	0.99995584	26°05' 54.0883"	81°20' 40.6247"	692+03.36	37.63'RT	11.754	SET ALUMINIUM DISC IN CONC. MONUMENT STAMPED "BM692"

REVISIONS				ENGINEER OF RECORD		STATE OF FLORIDA DEPARTMENT OF TRANSPORTATION			PROJECT CONTROL	SHEET NO. 8
DATE	DESCRIPTION	DATE	DESCRIPTION	HERNAN A. LUGO, P.E. LICENSE NUMBER: 74961 HBC ENGINEERING COMPANY 5200 NW 33 AVE, SUITE 211 FT. LAUDERDALE, FL 33309		ROAD NO.	COUNTY	FINANCIAL PROJECT ID		
				SR 29	COLLIER	448929-1-52-01				

GENERAL:

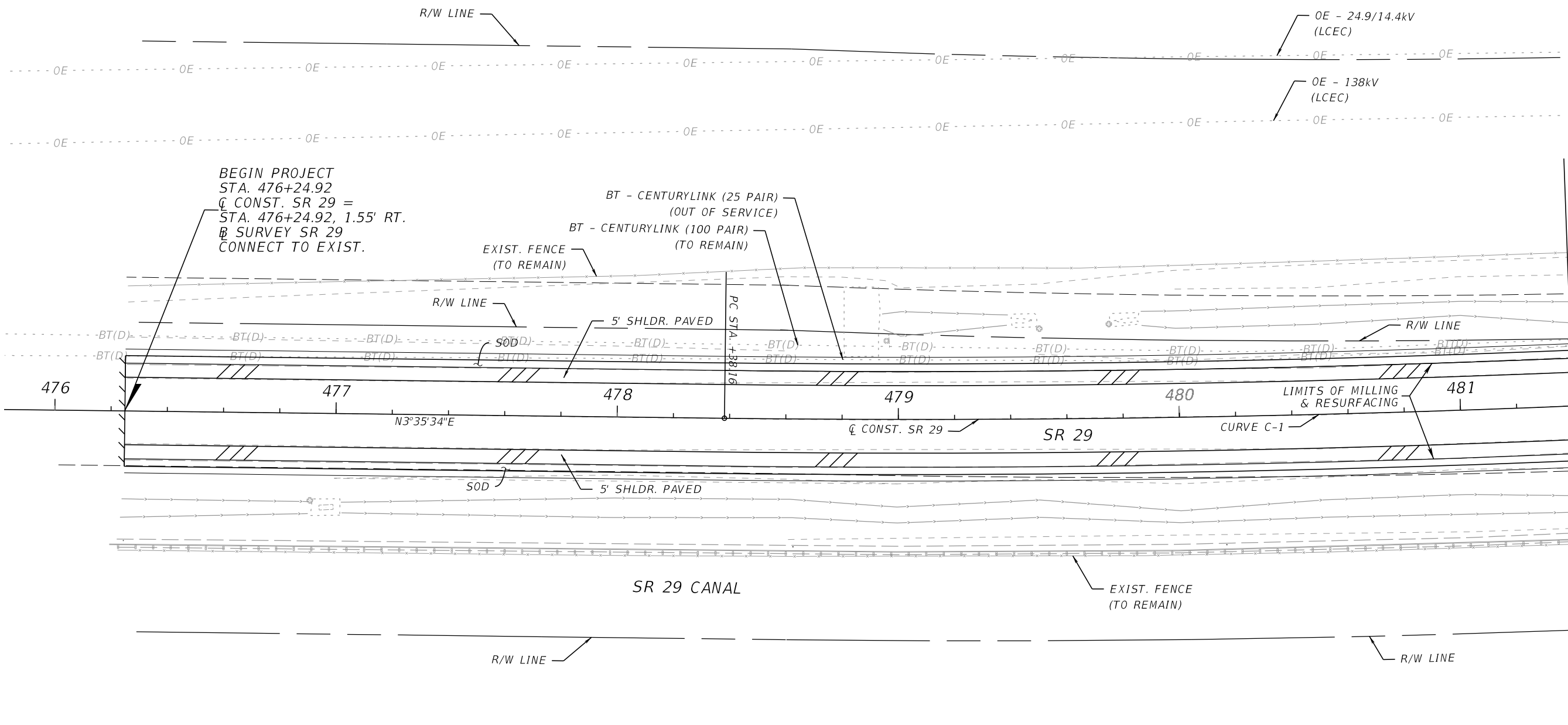
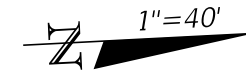
1. BENCHMARK ELEVATIONS ARE BASED ON A NORTH AMERICAN VERTICAL DATUM OF 1988 (NAVD 88).
2. ALL SURVEY INFORMATION WAS OBTAINED FROM A LICENSED FLORIDA PROFESSIONAL SURVEYOR AND MAPPER AND UTILIZED AS SUPPORTING DATA IN THE PRODUCTION OF DESIGN PLANS AND FOR CONSTRUCTION ON SUBJECT PROJECT. THE PROFESSIONAL SURVEYOR AND MAPPER OF RECORD IS:
 EDUARDO M. SUAREZ
 P.S.M. NO: 6313
 LONGITUDE SURVEYORS, LLC
 7700 N. KENDALL DRIVE, SUITE 705
 MIAMI, FL 33156
 CERTIFICATE OF AUTHORIZATION: LB 7335
3. THE LOCATION(S) OF THE UTILITIES SHOWN IN THE PLANS (INCLUDING THOSE DESIGNATED VV, VH, AND VVH) ARE BASED ON LIMITED INVESTIGATION TECHNIQUES AND SHOULD BE CONSIDERED APPROXIMATE ONLY. THE VERIFIED LOCATIONS/ELEVATIONS APPLY ONLY AT THE POINTS SHOWN. INTERPOLATIONS BETWEEN THESE POINTS HAVE NOT BEEN VERIFIED.

4. UTILITY AGENCY/OWNERS:	COMPANY	CONTACT	TELEPHONE NUMBERS
	CENTURYLINK (LOCAL)	TROY INNISS	(850)-599-1444
	LEVEL 3 COMMUNICATIONS	FRANCISCO AZURI	(786)-266-1713
	LEE COUNTY ELECTRIC CO-OP DISTRIBUTION	TOM BAILEY	(239)-656-2414
	LEE COUNTY ELECTRIC CO-OP TRANSMISSION	TOM BAILEY	(239)-656-2414
	FDOT D1 ITS	DAVID BURNSIDE	(239)-961-3310

1/19/2024 3:44:32 PM D01512 \\192.168.1.21\Projects\020230500381 SR-29 From Wagon Rd to I-75\44892915201\Roadway\GNWTRD01.dgn

REVISIONS				ENGINEER OF RECORD		STATE OF FLORIDA DEPARTMENT OF TRANSPORTATION			<i>GENERAL NOTES</i>	SHEET NO.
DATE	DESCRIPTION	DATE	DESCRIPTION	HERNAN A. LUGO, P.E. LICENSE NUMBER: 74961 HBC ENGINEERING COMPANY 5200 NW 33 AVE, SUITE 211 FT. LAUDERDALE, FL 33309		ROAD NO.	COUNTY	FINANCIAL PROJECT ID		9
								SR 29		COLLIER

THE OFFICIAL RECORD OF THIS SHEET IS THE ELECTRONIC FILE DIGITALLY SIGNED AND SEALED UNDER RULE 61G15-23.004, F.A.C.

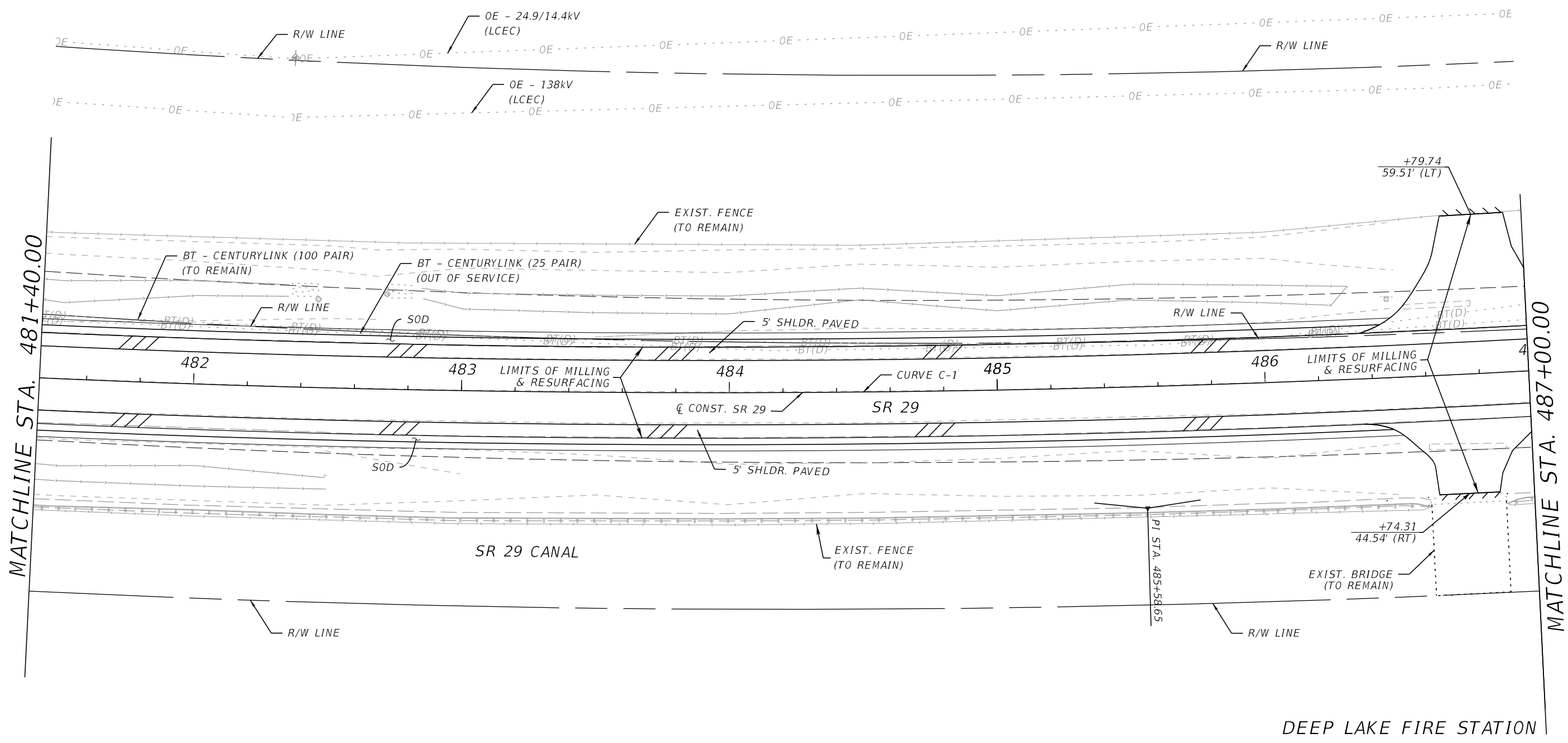
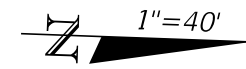


1/19/2024 3:47:40 PM D01512 P:\020230500381 SR-29 From Wagon Rd to I-75\44892915201\Roadway\PLANRD01.dgn

THE OFFICIAL RECORD OF THIS SHEET IS THE ELECTRONIC FILE DIGITALLY SIGNED AND SEALED UNDER RULE 61G15-23.004, F.A.C.

REVISIONS				ENGINEER OF RECORD			STATE OF FLORIDA DEPARTMENT OF TRANSPORTATION			SHEET NO.
DATE	DESCRIPTION	DATE	DESCRIPTION	HERNAN A. LUGO, P.E. LICENSE NUMBER: 74961 HBC ENGINEERING COMPANY 5200 NW 33 AVE, SUITE 211 FT. LAUDERDALE, FL 33309			ROAD NO.	COUNTY	FINANCIAL PROJECT ID	
							SR 29	COLLIER	448929-1-52-01	10

ROADWAY PLANS



MATCHLINE STA. 481+40.00

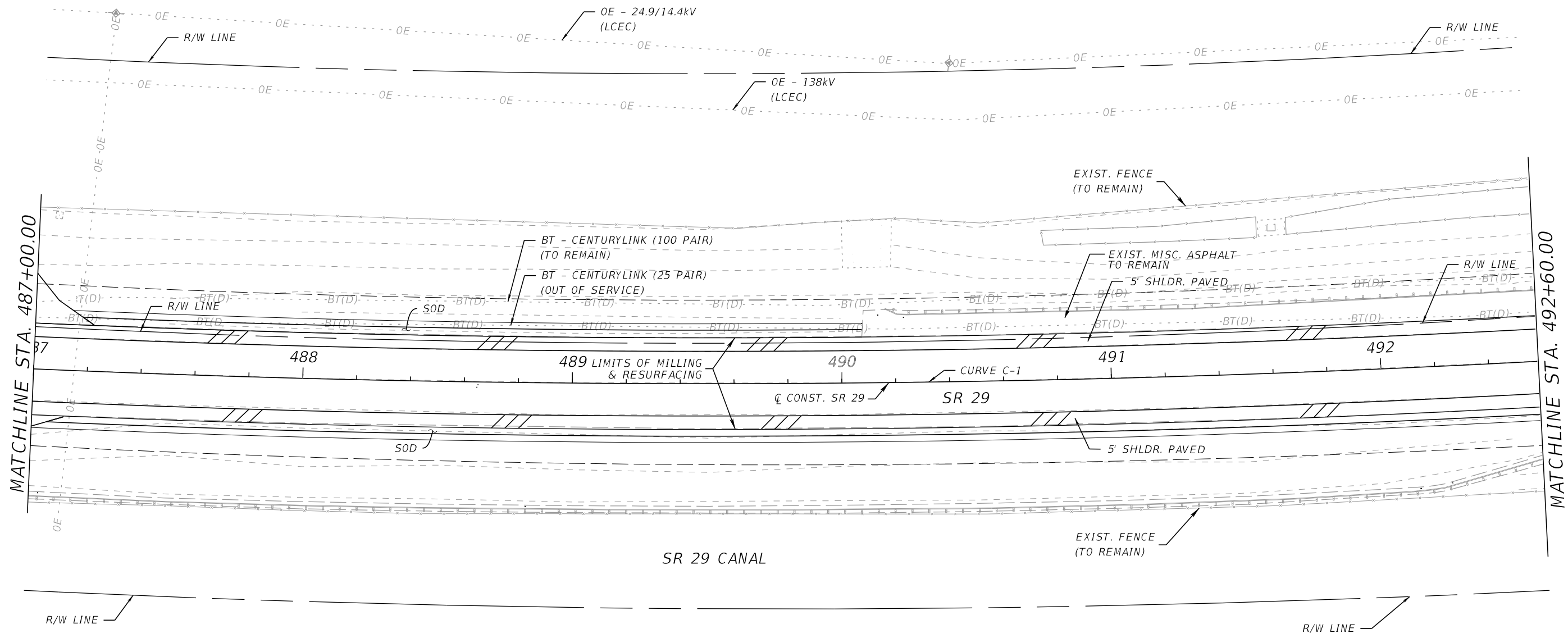
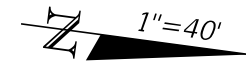
MATCHLINE STA. 487+00.00

DEEP LAKE FIRE STATION

1/19/2024 3:45:10 PM D01512 P:\020230500381 SR-29 From Wagon Rd to I-75\44892915201\Roadway\PLANRD01.dgn

THE OFFICIAL RECORD OF THIS SHEET IS THE ELECTRONIC FILE DIGITALLY SIGNED AND SEALED UNDER RULE 61G15-23.004, F.A.C.

DATE	DESCRIPTION	REVISIONS DATE	DESCRIPTION	ENGINEER OF RECORD	STATE OF FLORIDA DEPARTMENT OF TRANSPORTATION	ROADWAY PLANS	SHEET NO.
				HERNAN A. LUGO, P.E. LICENSE NUMBER: 74961 HBC ENGINEERING COMPANY 5200 NW 33 AVE, SUITE 211 FT. LAUDERDALE, FL 33309	ROAD NO. COUNTY FINANCIAL PROJECT ID SR 29 COLLIER 448929-1-52-01		11

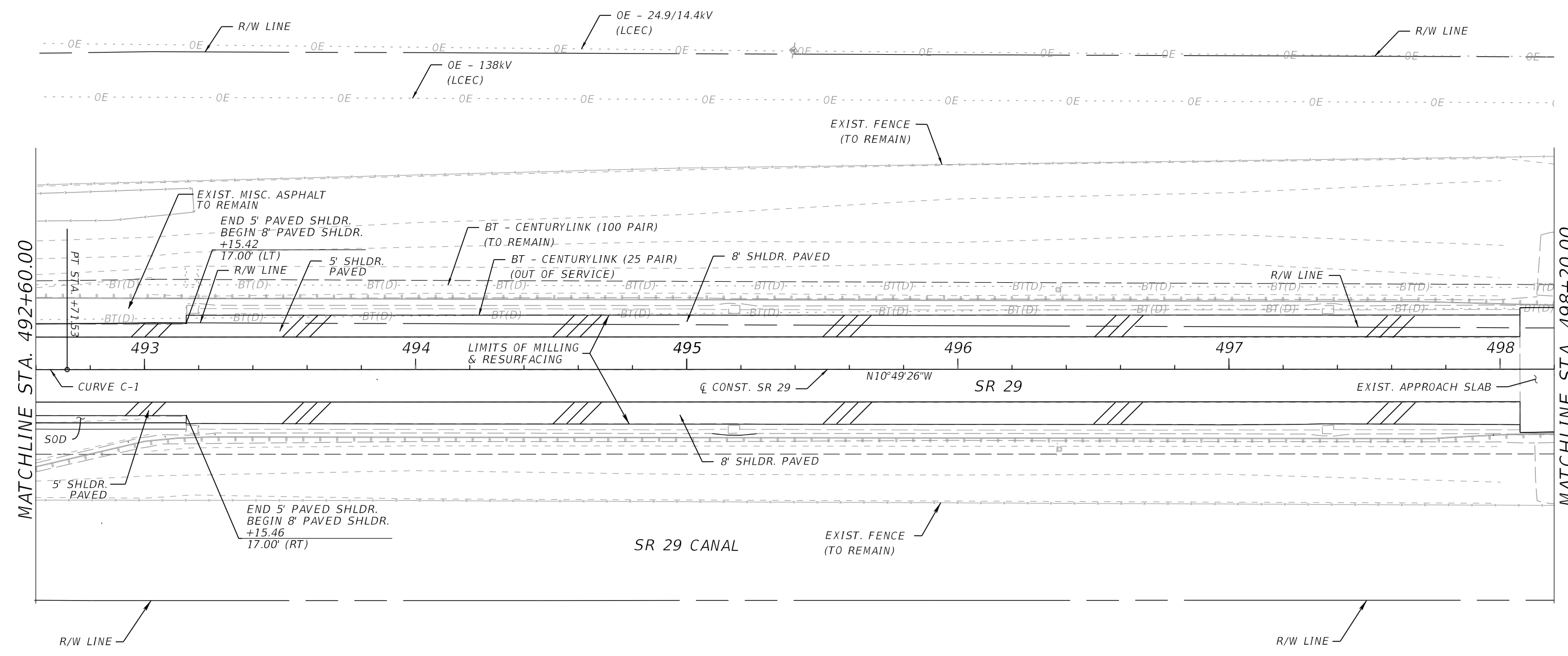
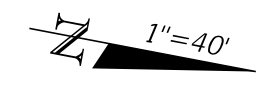


DEEP LAKE
FIRE STATION

1/19/2024 3:45:11 PM D01512 P:\020230500381 SR-29 From Wagon Rd to I-75\44892915201\Roadway\PLANRD01.dgn

REVISIONS				ENGINEER OF RECORD		STATE OF FLORIDA DEPARTMENT OF TRANSPORTATION			ROADWAY PLANS	SHEET NO. 12
DATE	DESCRIPTION	DATE	DESCRIPTION	HERNAN A. LUGO, P.E. LICENSE NUMBER: 74961 HBC ENGINEERING COMPANY 5200 NW 33 AVE, SUITE 211 FT. LAUDERDALE, FL 33309		ROAD NO.	COUNTY	FINANCIAL PROJECT ID		
						SR 29	COLLIER	448929-1-52-01		

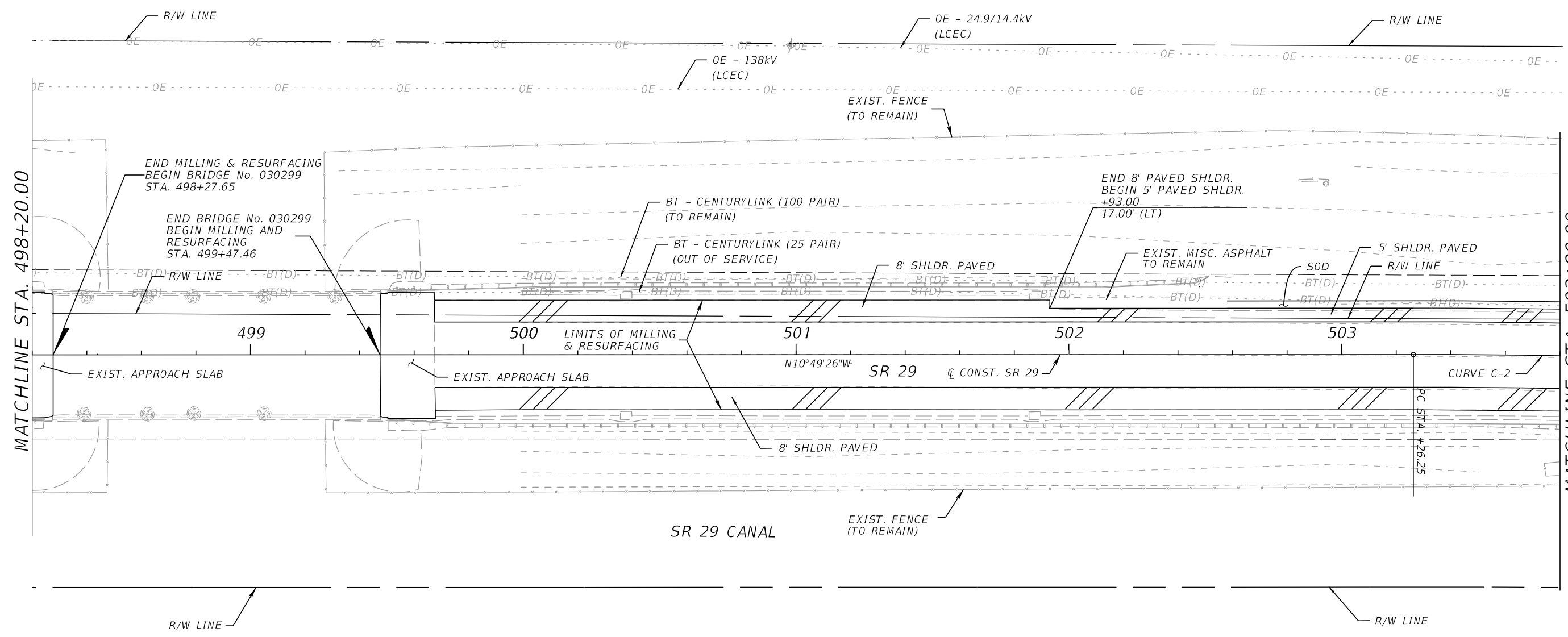
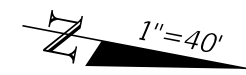
THE OFFICIAL RECORD OF THIS SHEET IS THE ELECTRONIC FILE DIGITALLY SIGNED AND SEALED UNDER RULE 61G15-23.004, F.A.C.



1/19/2024 3:45:11 PM D01512 P:\020230500381 SR-29 From Wagon Rd to I-75\44892915201\Roadway\PLANRD01.dgn

THE OFFICIAL RECORD OF THIS SHEET IS THE ELECTRONIC FILE DIGITALLY SIGNED AND SEALED UNDER RULE 61G15-23.004, F.A.C.

REVISIONS				ENGINEER OF RECORD			STATE OF FLORIDA DEPARTMENT OF TRANSPORTATION			ROADWAY PLANS	SHEET NO.
DATE	DESCRIPTION	DATE	DESCRIPTION				ROAD NO.	COUNTY	FINANCIAL PROJECT ID		
				HERNAN A. LUGO, P.E. LICENSE NUMBER: 74961 HBC ENGINEERING COMPANY 5200 NW 33 AVE, SUITE 211 FT. LAUDERDALE, FL 33309			SR 29	COLLIER	448929-1-52-01		13



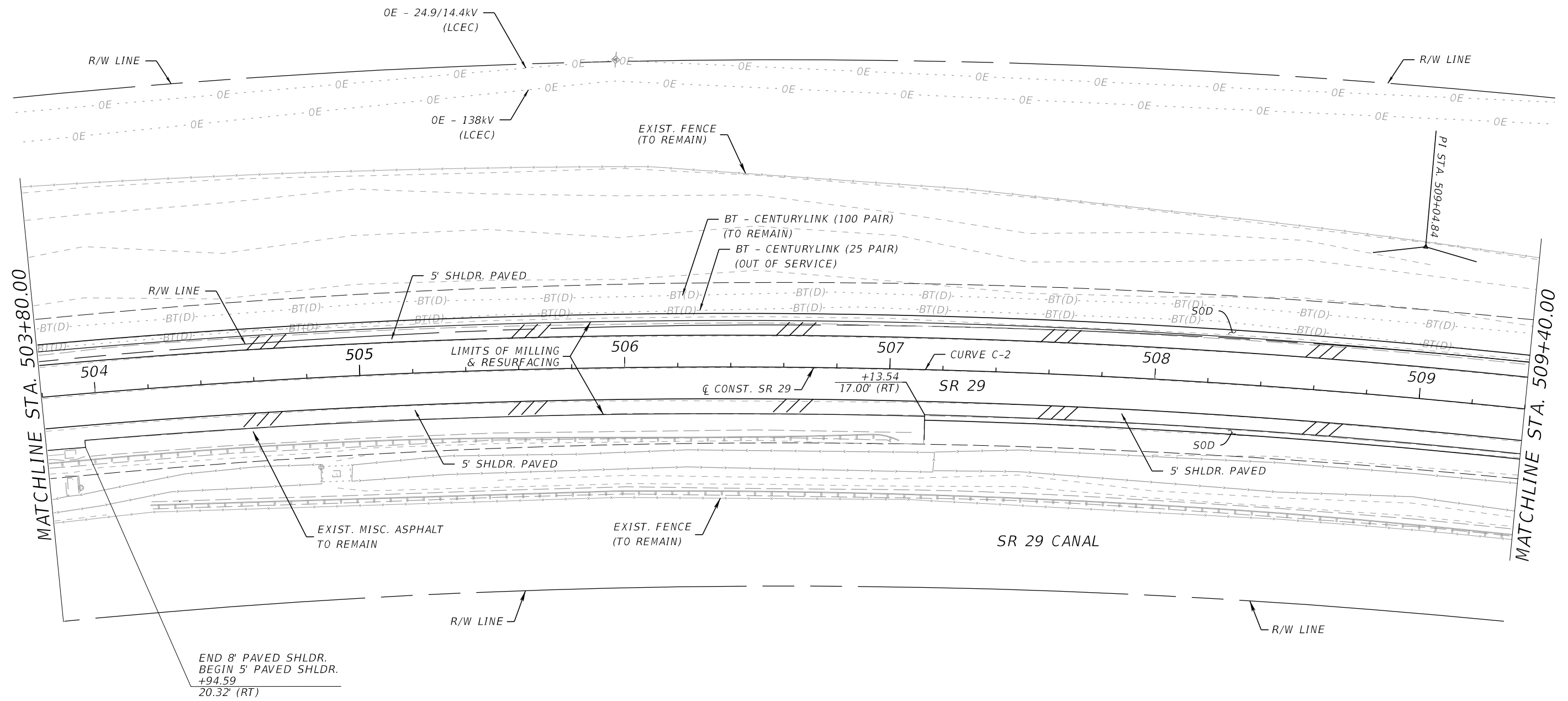
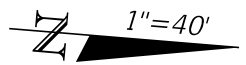
MATCHLINE STA. 498+20.00

MATCHLINE STA. 503+80.00

1/19/2024 3:45:12 PM D01512 P:\020230500381 SR-29 From Wagon Rd to I-75\44892915201\Roadway\PLANRD01.dgn

THE OFFICIAL RECORD OF THIS SHEET IS THE ELECTRONIC FILE DIGITALLY SIGNED AND SEALED UNDER RULE 61G15-23.004, F.A.C.

REVISIONS				ENGINEER OF RECORD			STATE OF FLORIDA DEPARTMENT OF TRANSPORTATION			ROADWAY PLANS	SHEET NO. 14
DATE	DESCRIPTION	DATE	DESCRIPTION	HERNAN A. LUGO, P.E. LICENSE NUMBER: 74961 HBC ENGINEERING COMPANY 5200 NW 33 AVE, SUITE 211 FT. LAUDERDALE, FL 33309			ROAD NO.	COUNTY	FINANCIAL PROJECT ID		
							SR 29	COLLIER	448929-1-52-01		



MATCHLINE STA. 503+80.00

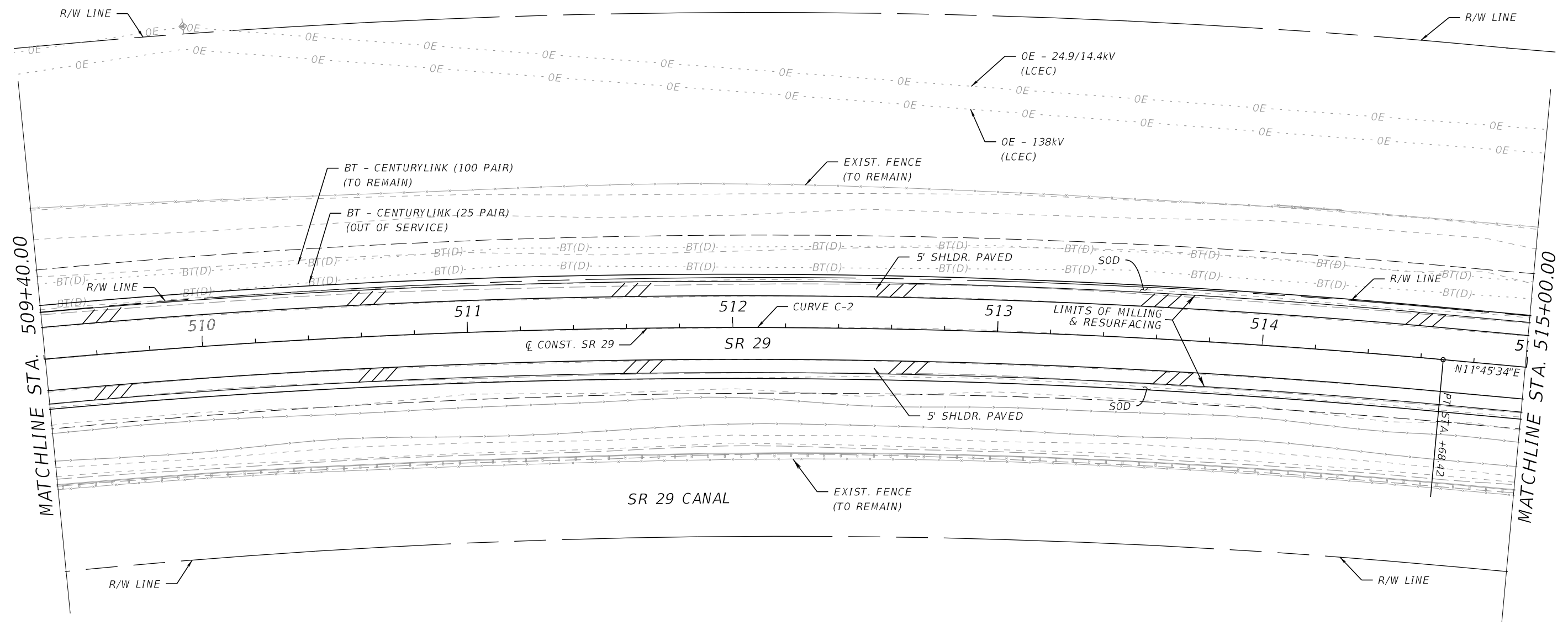
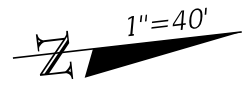
MATCHLINE STA. 509+40.00

END 8' PAVED SHLDR.
BEGIN 5' PAVED SHLDR.
+94.59
20.32' (RT)

1/19/2024 3:45:13 PM D01512 P:\020230500381 SR-29 From Wagon Rd to I-75\44892915201\Roadway\PLANRD01.dgn

REVISIONS				ENGINEER OF RECORD		STATE OF FLORIDA DEPARTMENT OF TRANSPORTATION			ROADWAY PLANS	SHEET NO. 15
DATE	DESCRIPTION	DATE	DESCRIPTION	HERNAN A. LUGO, P.E. LICENSE NUMBER: 74961 HBC ENGINEERING COMPANY 5200 NW 33 AVE, SUITE 211 FT. LAUDERDALE, FL 33309		ROAD NO.	COUNTY	FINANCIAL PROJECT ID		
						SR 29	COLLIER	448929-1-52-01		

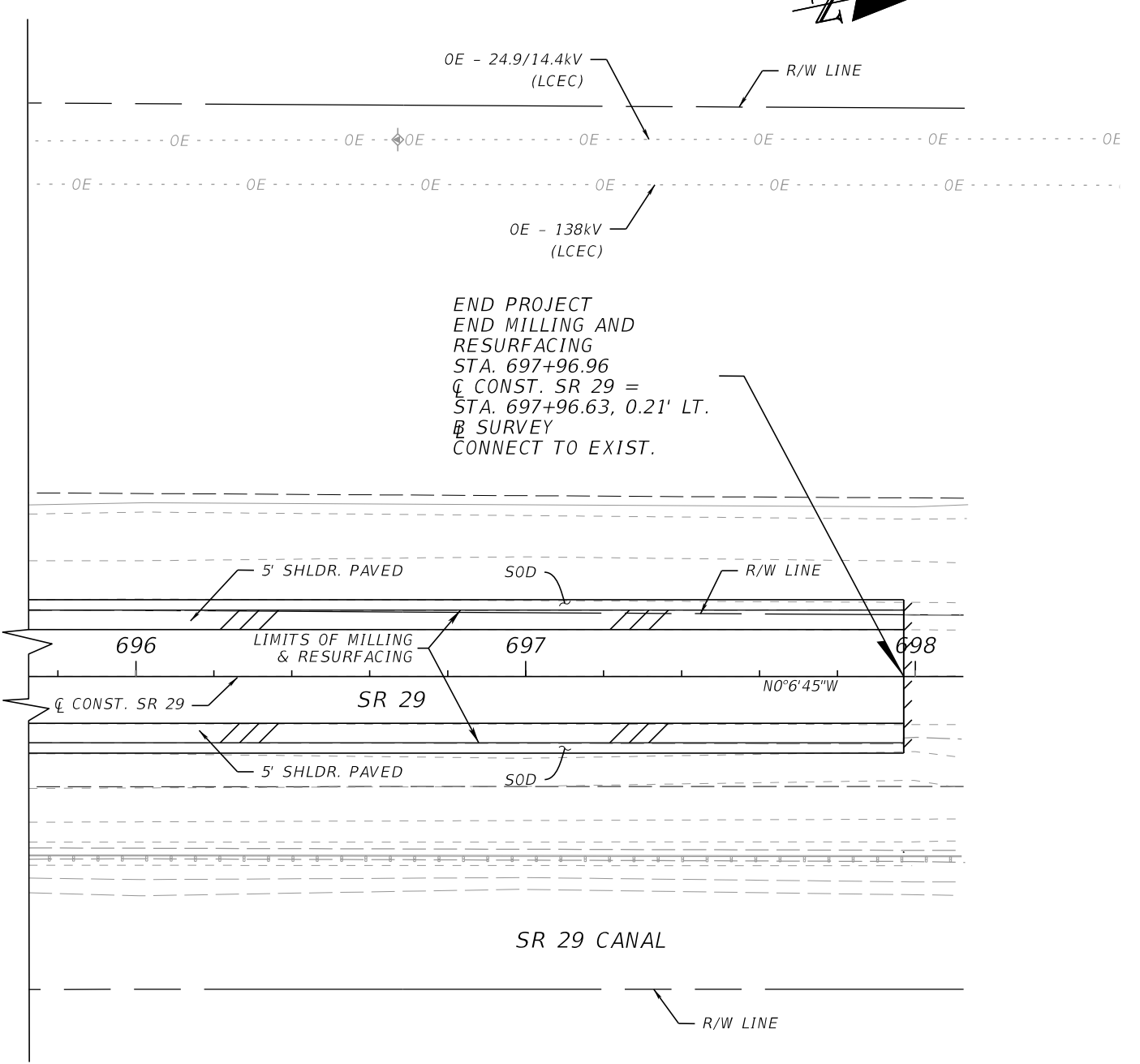
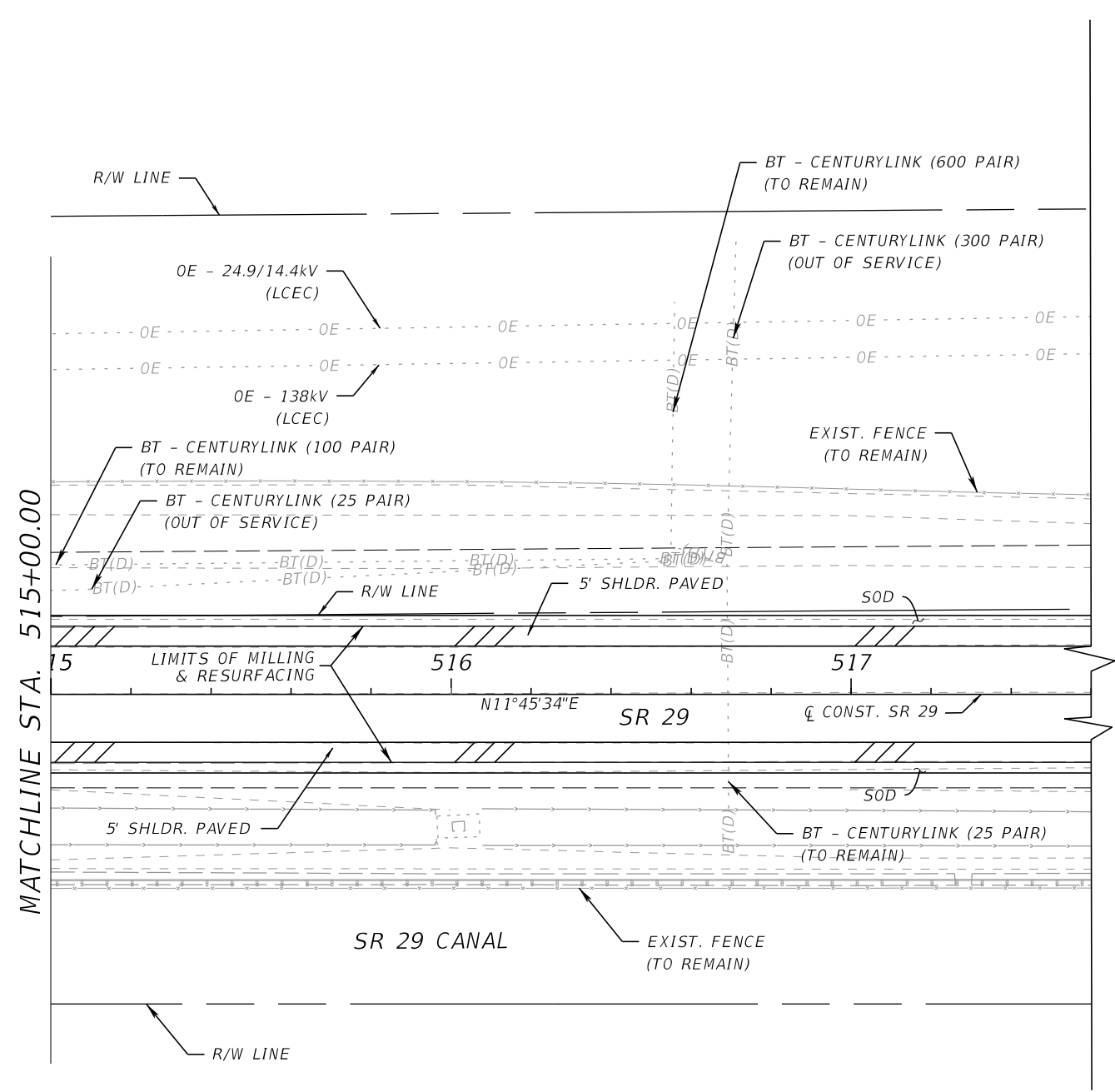
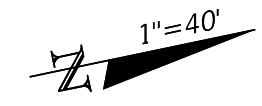
THE OFFICIAL RECORD OF THIS SHEET IS THE ELECTRONIC FILE DIGITALLY SIGNED AND SEALED UNDER RULE 61G15-23.004, F.A.C.



1/19/2024 3:45:14 PM D01512 P:\020230500381 SR-29 From Wagon Rd to I-75\44892915201\Roadway\PLANRD01.dgn

REVISIONS				ENGINEER OF RECORD			STATE OF FLORIDA DEPARTMENT OF TRANSPORTATION			ROADWAY PLANS	SHEET NO. 16
DATE	DESCRIPTION	DATE	DESCRIPTION	HERNAN A. LUGO, P.E. LICENSE NUMBER: 74961 HBC ENGINEERING COMPANY 5200 NW 33 AVE, SUITE 211 FT. LAUDERDALE, FL 33309			ROAD NO.	COUNTY	FINANCIAL PROJECT ID		
							SR 29	COLLIER	448929-1-52-01		

THE OFFICIAL RECORD OF THIS SHEET IS THE ELECTRONIC FILE DIGITALLY SIGNED AND SEALED UNDER RULE 61G15-23.004, F.A.C.



1/19/2024 3:45:15 PM D01512 P:\020230500381 SR-29 From Wagon Rd to I-75\44892915201\Roadway\PLANRD01.dgn

THE OFFICIAL RECORD OF THIS SHEET IS THE ELECTRONIC FILE DIGITALLY SIGNED AND SEALED UNDER RULE 61G15-23.004, F.A.C.

REVISIONS				ENGINEER OF RECORD			STATE OF FLORIDA DEPARTMENT OF TRANSPORTATION			ROADWAY PLANS	SHEET NO. 17
DATE	DESCRIPTION	DATE	DESCRIPTION	HERNAN A. LUGO, P.E. LICENSE NUMBER: 74961 HBC ENGINEERING COMPANY 5200 NW 33 AVE, SUITE 211 FT. LAUDERDALE, FL 33309			ROAD NO.	COUNTY	FINANCIAL PROJECT ID		
				SR 29	COLLIER	448929-1-52-01					

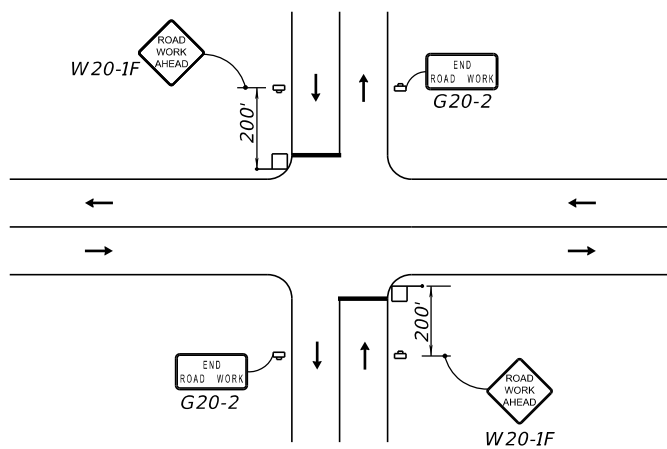
TRAFFIC CONTROL PLAN GENERAL NOTES

- EXISTING POSTED SPEED LIMITS SHALL BE MAINTAINED FOR ALL PHASES OF WORK. POSTED SPEED IS 60 MPH ON SR-29.
- SINGLE LANE CLOSURES ARE PERMITTED BETWEEN THE HOURS OF 7:00 AM TO 7:00 PM UNLESS OTHERWISE NOTED IN THE TTCP.
- FOURTEEN (14) DAYS PRIOR TO CONSTRUCTION, PLACE, AS DIRECTED BY THE ENGINEER, ONE TEMPORARY PORTABLE CHANGEABLE (VARIABLE) MESSAGE SIGN (PCMS) AT EACH END OF THE PROJECT.
- NO STAGING IS TO OCCUR WITHIN THE LIMITS OF SECTION 4(F) RESOURCES OR WETLANDS.

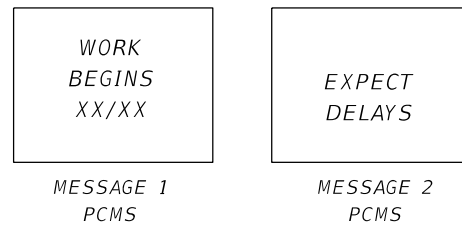
LEGEND

- WORK AREA
- WORK ZONE SIGN
- LANE IDENTIFICATION AND DIRECTION OF TRAFFIC
- PORTABLE CHANGEABLE (VARIABLE) MESSAGE SIGN

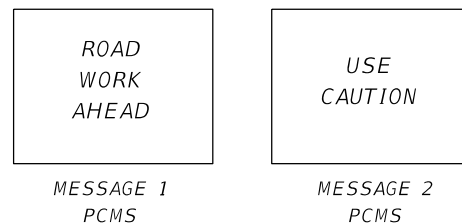
DRIVEWAY TYPICAL SIGN DETAIL N.T.S.



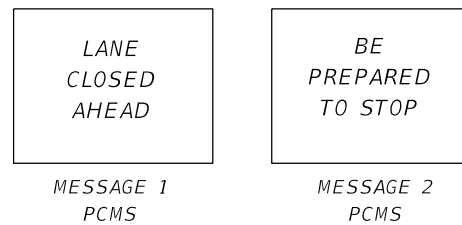
MESSAGE TO BE PLACED PRIOR TO CONSTRUCTION



MESSAGE TO BE PLACED DURING CONSTRUCTION

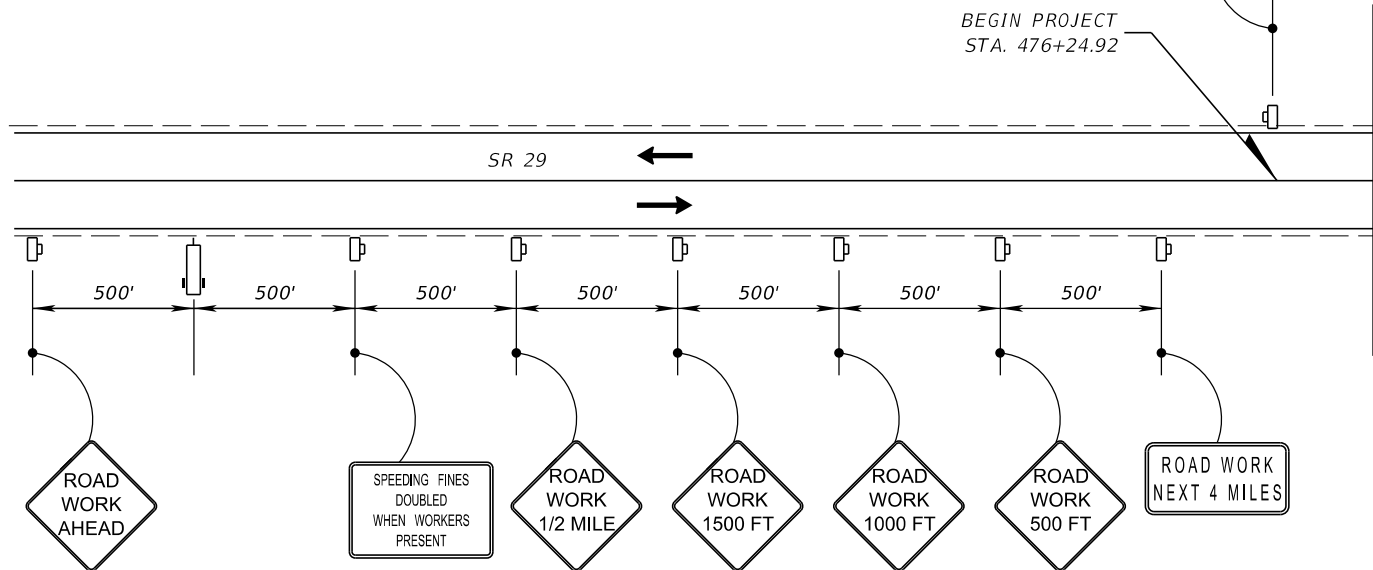


MESSAGE TO BE PLACED DURING LANE CLOSURE

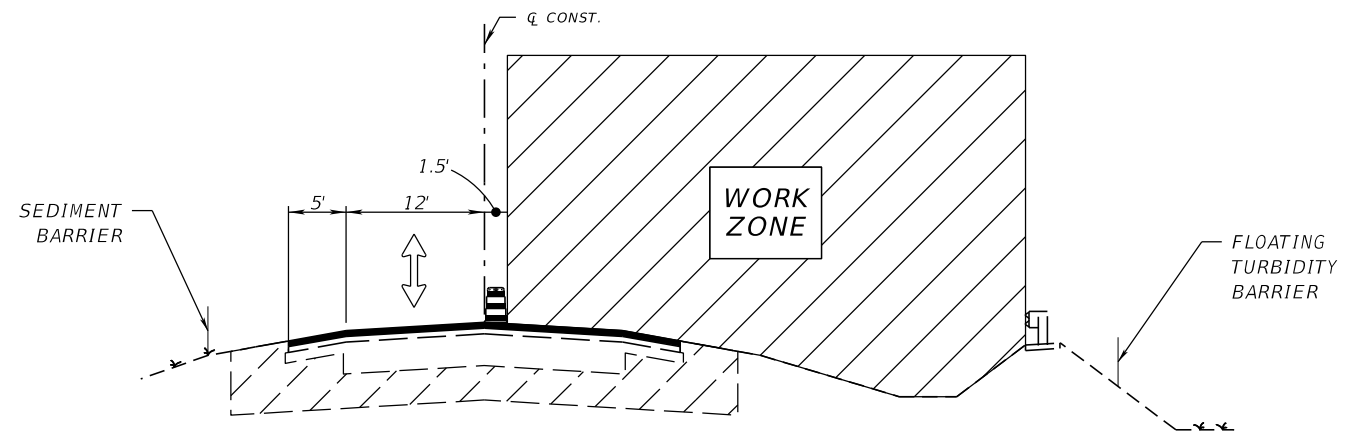


BEGIN PROJECT STA. 476+24.92

END ROAD WORK



PHASES 1A & 1B
* PHASE 1A TO BE MIRRORED FOR PHASE 1B

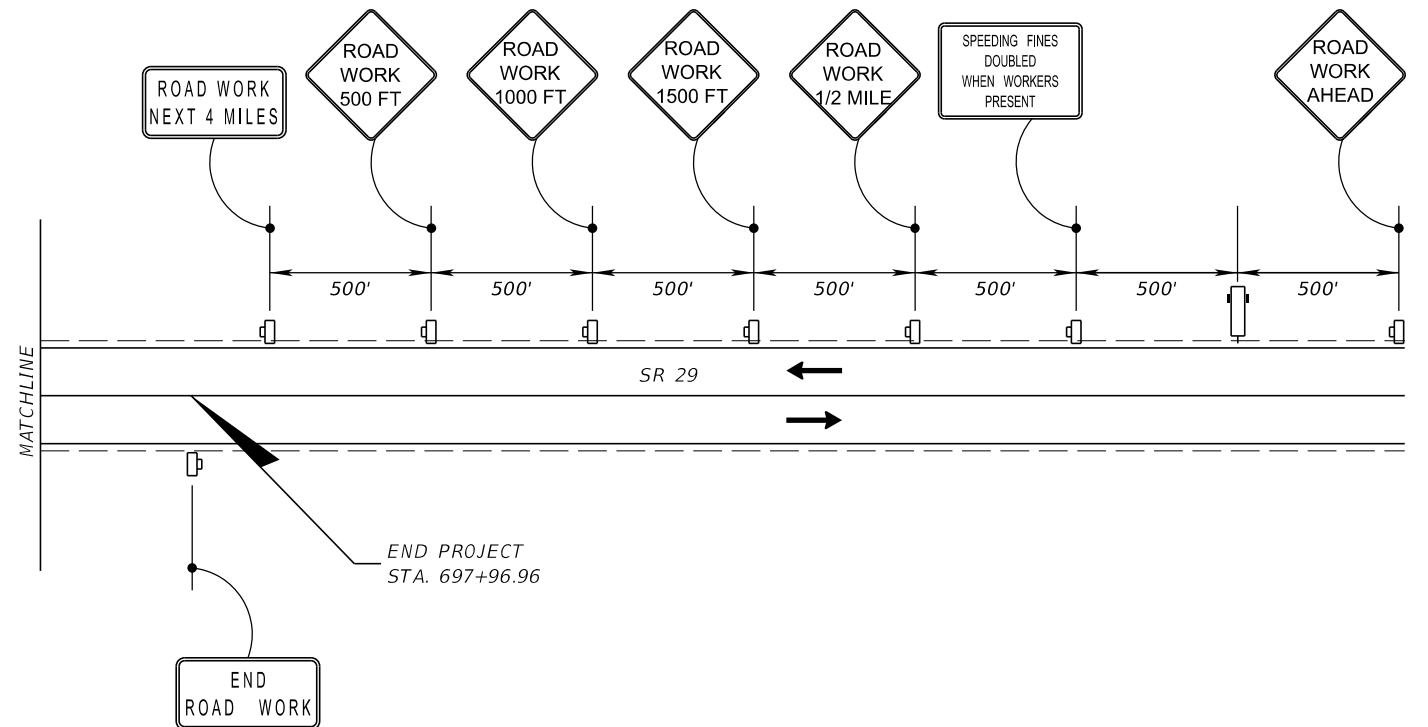


PHASE 1A (RT) AND PHASE 1B (LT)

- LANE CLOSURE AND FLAGGING OPERATIONS ARE TO UTILIZE STANDARDS PLANS INDEX 102-600, AND 102-603.
- INSTALL EROSION CONTROL DEVICES.

PHASE II

- MILLING AND RESURFACING OPERATIONS ARE TO UTILITZE STANDARD PLANS INDEX NO. 102-600, 102-602, 102-603, AND 102-604.
- PAVEMENT MARKINGS AND SIGNAGE OPERATIONS ARE TO UTILIZE STANDARD PLANS INDEX NO. 102-600, 102-601, 102-602, 102-603, 102-604, AND 102-607.



1/19/2024 3:45:23 PM D01512 P:\020230500381 SR-29 From Wagon Rd to I-75\44892915201\Roadway\TCDSRD01.dgn

THE OFFICIAL RECORD OF THIS SHEET IS THE ELECTRONIC FILE DIGITALLY SIGNED AND SEALED UNDER RULE 61G15-23.004, F.A.C.

REVISIONS				ENGINEER OF RECORD		STATE OF FLORIDA DEPARTMENT OF TRANSPORTATION			SHEET NO.
DATE	DESCRIPTION	DATE	DESCRIPTION			ROAD NO.	COUNTY	FINANCIAL PROJECT ID	
				HERNAN A. LUGO, P.E. LICENSE NUMBER: 74961 HBC ENGINEERING COMPANY 5200 NW 33 AVE, SUITE 211 FT LAUDERDALE, FL 33309		SR 29	COLLIER	448929-1-52-01	18

TEMPORARY TRAFFIC CONTROL PLAN