

STATE OF FLORIDA
DEPARTMENT OF TRANSPORTATION

CONTRACT PLANS

FINANCIAL PROJECT ID 444008-4-52-01

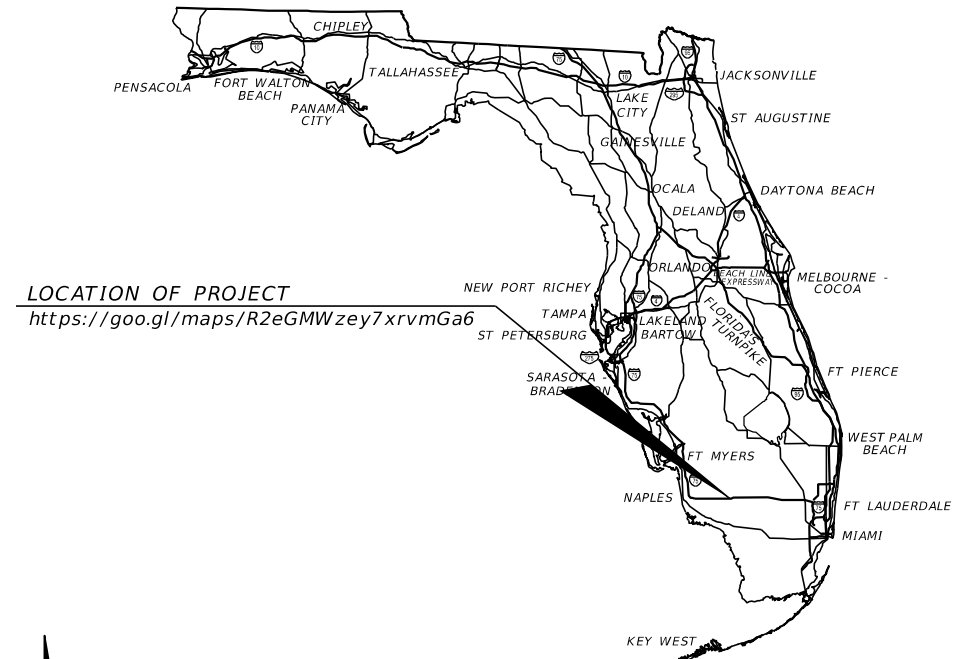
COLLIER COUNTY (03175)

STATE ROAD NO. 93 (INTERSTATE 75)

INTELLIGENT TRANSPORTATION
SYSTEMS (ITS) PLANS

INDEX OF INTELLIGENT TRANSPORTATION
SYSTEMS (ITS) PLANS

SHEET NO.	SHEET DESCRIPTION
IT-1	KEY SHEET
IT-1A	NOTES TO REVIEWER
IT-2	SIGNATURE SHEET
IT-3 - IT-4	TABULATION OF QUANTITIES
IT-5	GENERAL NOTES
IT-6 - IT-21	INTELLIGENT TRANSPORTATION SYSTEMS PLANS
IT-22	SPLICE DIAGRAM
IT-23	GUIDE SIGN WORKSHEET



LOCATION OF PROJECT

<https://goo.gl/maps/R2eGMWzey7xrvmGa6>



INTELLIGENT TRANSPORTATION
SYSTEMS (ITS) PLANS
ENGINEER OF RECORD:

PATRICIA T. CHRISTIE, P.E. NO.: 60049
FALLER, DAVIS & ASSOCIATES, INC.
4200 W. CYPRESS ST., SUITE 500
TAMPA, FLORIDA 33607-4168
(813) 261-5136
CONTRACT NO. CA632
VENDOR NO. F592594956001

FDOT PROJECT MANAGER:
JEFFREY JONES, P.E.

PHASE IIR SUBMITTAL
OCTOBER 20, 2022

CONSTRUCTION CONTRACT NO.	FISCAL YEAR	SHEET NO.
	25	IT-1

THE OFFICIAL RECORD OF THIS SHEET IS THE ELECTRONIC FILE DIGITALLY SIGNED AND SEALED UNDER RULE 61G15-23.004, F.A.C.

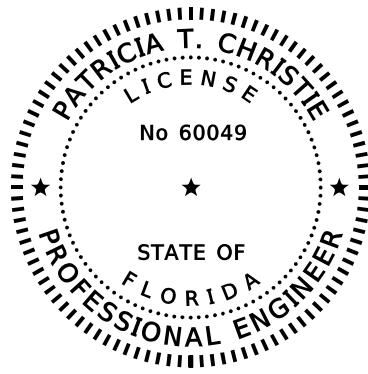
NOTES TO REVIEWERS

=====

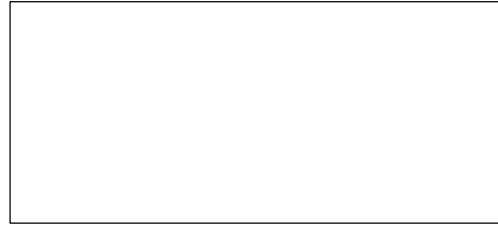
1. THE PROJECT WAS SPLIT INTO THREE SEGMENTS AS FOLLOWS DUE TO FUNDING CONSTRAINTS:

- A. FPID 444008-2-52-01, BROWARD COUNTY LINE (MP 0.063) TO EAST OF BRIDGE NOS. 030243/030244 (MP 25.144) LETTING FEBRUARY 2022
- B. FPID 444008-3-52-01, EAST OF BRIDGE NOS. 030243/030244 (MP 25.144) TO WEST OF BRIDGE NOS. 03005/030223 (MP 33.989) AND (MP 46.000) TO TOLL BOOTH (MP 49.282) LETTING JULY 2022
- C. FPID 444008-4-52-01, WEST OF BRIDGE NOS. 03005/030223 (MP 33.989) TO (46.000) LETTING FY 2025

REVISIONS				FALLER, DAVIS & ASSOCIATES, INC. 4200 W. CYPRESS ST., SUITE 500 TAMPA, FLORIDA 33607-4168 PATRICIA T. CHRISTIE, P.E. NO.: 60049	STATE OF FLORIDA DEPARTMENT OF TRANSPORTATION			NOTES TO REVIEWER	SHEET NO.
DATE	DESCRIPTION	DATE	DESCRIPTION		ROAD NO.	COUNTY	FINANCIAL PROJECT ID		IT-1A
					SR 93	COLLIER	444008-4-52-01		



THIS ITEM HAS BEEN DIGITALLY
SIGNED AND SEALED BY



ON THE DATE ADJACENT TO THE SEAL

PRINTED COPIES OF THIS DOCUMENT ARE
NOT CONSIDERED SIGNED AND SEALED
AND THE SIGNATURE MUST BE VERIFIED
ON ANY ELECTRONIC COPIES.

FALLER, DAVIS & ASSOCIATES, INC.
4200 W. CYPRESS ST., SUITE 500
TAMPA, FLORIDA 33607-4168
PATRICIA T. CHRISTIE, P.E. NO.: 60049

THE ABOVE NAMED PROFESSIONAL ENGINEER SHALL BE RESPONSIBLE FOR THE
FOLLOWING SHEETS IN ACCORDANCE WITH RULE 61G15-23.004, F.A.C.

**INDEX OF INTELLIGENT TRANSPORTATION
SYSTEMS (ITS) PLANS**

SHEET NO.	SHEET DESCRIPTION
IT-1	KEY SHEET
IT-2	SIGNATURE SHEET
IT-3 - IT-4	TABULATION OF QUANTITIES
IT-5	GENERAL NOTES
IT-6 - IT-21	INTELLIGENT TRANSPORTATION SYSTEMS PLANS
IT-22	SPLICE DIAGRAM
IT-23	GUIDE SIGN WORKSHEET

REVISIONS			
DATE	DESCRIPTION	DATE	DESCRIPTION

FALLER, DAVIS & ASSOCIATES, INC.
4200 W. CYPRESS ST., SUITE 500
TAMPA, FLORIDA 33607-4168
PATRICIA T. CHRISTIE, P.E. NO.: 60049

STATE OF FLORIDA DEPARTMENT OF TRANSPORTATION		
ROAD NO.	COUNTY	FINANCIAL PROJECT ID
SR 93	COLLIER	444008-4-52-01

SIGNATURE SHEET

SHEET NO.
IT-2

TABULATION OF QUANTITIES

PAY ITEM NO.	DESCRIPTION	UNIT	SHEET NUMBERS																		TOTAL THIS SHEET	
			IT-6		IT-7		IT-8		IT-9		IT-10		IT-11		IT-12		IT-13		IT-14		PLAN	FINAL
			PLAN	FINAL	PLAN	FINAL	PLAN	FINAL	PLAN	FINAL	PLAN	FINAL	PLAN	FINAL	PLAN	FINAL	PLAN	FINAL	PLAN	FINAL		
611-1-1	ITSFM SUBSURFACE DOCUMENTATION - PROJECT LENGTH	MI																				
611-2-2	ITSFM LOCATION DOCUMENTATION - ITS SITE	EA																				
630-2-11	CONDUIT (F&I) (OPEN TRENCH)	LF																				
630-2-14	CONDUIT (F&I) (ABOVE GROUND)	LF																				
630-2-15	CONDUIT (F&I) (BRIDGE MOUNT)	LF																				
633-1-121	FIBER OPTIC CABLE (F&I) (UNDERGROUND) (2-12 FIBERS)	LF																				
633-1-124	FIBER OPTIC CABLE (F&I) (UNDERGROUND) (97-144 FIBERS)	LF	2475		5760		5910		5710		6030		5865		5910		5910		5765		49335	
633-2-31	FIBER OPTIC CONNECTION (INSTALL) (SPLICE)	EA	144																		144	
633-2-32	FIBER OPTIC CONNECTION (INSTALL) (TERMINATION)	EA																				
633-3-11	FIBER OPTIC CONNECTION HARDWARE (F&I) (SPLICE ENCLOSURE)	EA	1																		1	
633-3-12	FIBER OPTIC CONNECTION HARDWARE (F&I) (SPLICE TRAY)	EA	1																		1	
633-3-14	FIBER OPTIC CONNECTION HARDWARE (F&I) (BUFFER TUBE FAN OUT KIT)	EA																				
633-3-16	FIBER OPTIC CONNECTION HARDWARE (F&I) (PATCH PANEL - FIELD TERMINATED)	EA																				
633-6	FIBER OPTIC LOCATOR	DA																				
635-2-11	PULL & SPLICE BOX (F&I) (13" X 24" COVER SIZE)	EA																				
635-2-12	PULL & SPLICE BOX (F&I) (24" X 36" COVER SIZE)	EA																				
646-2-130	ALUMINUM POLE (F&I) (30')	EA																				
660-3-11	VEHICLE DETECTION SYSTEM - MICROWAVE (F&I) (CABINET EQUIPMENT)	EA																				
660-3-12	VEHICLE DETECTION SYSTEM - MICROWAVE (F&I) (ABOVE GROUND EQUIPMENT)	EA																				
676-2-500	ITS CABINET (ADJUST/MODIFY)	EA																				
676-3-10	SMALL EQUIPMENT ENCLOSURE (F&I) (LESS THAN 10"W X 13"H X 11"D)	EA																				
684-1-1	MANAGED FIELD ETHERNET SWITCH (F&I)	EA																				
684-1-6	MANAGED FIELD ETHERNET SWITCH (REMOVE-CABINET TO REMAIN))	EA																				
684-5-1	MEDIA CONVERTER (F&I)	EA																				
695-5-1	TRAFFIC MONITORING SITE SOLAR POWER UNIT (F&I)	EA																				
700-1-12	SINGLE POST SIGN (F&I) (GROUND MOUNT) (12-20 SF)	AS																				
700-12-21	SIGN BEACON (F&I) (GOUND MOUNT - SOLAR POWERED) (ONE BEACON)	AS																				

<table border="1"> <thead> <tr> <th colspan="4">REVISIONS</th> </tr> <tr> <th>DATE</th> <th>DESCRIPTION</th> <th>DATE</th> <th>DESCRIPTION</th> </tr> </thead> <tbody> <tr> <td> </td> <td> </td> <td> </td> <td> </td> </tr> </tbody> </table>				REVISIONS				DATE	DESCRIPTION	DATE	DESCRIPTION					FALLER, DAVIS & ASSOCIATES, INC. 4200 W. CYPRESS ST., SUITE 500 TAMPA, FLORIDA 33607-4168 PATRICIA T. CHRISTIE, P.E. NO.: 60049			STATE OF FLORIDA DEPARTMENT OF TRANSPORTATION			TABULATION OF QUANTITIES (1)			SHEET NO. IT-3	
REVISIONS																										
DATE	DESCRIPTION	DATE	DESCRIPTION																							
ROAD NO.		COUNTY		FINANCIAL PROJECT ID		SR 93		COLLIER		444008-4-52-01																

THE OFFICIAL RECORD OF THIS SHEET IS THE ELECTRONIC FILE DIGITALLY SIGNED AND SEALED UNDER RULE 61G15-23.004, F.A.C.

TABULATION OF QUANTITIES

PAY ITEM NO.	DESCRIPTION	UNIT	SHEET NUMBERS																TOTAL THIS SHEET		GRAND TOTAL	
			IT-15		IT-16		IT-17		IT-18		IT-19		IT-20		IT-21		PLAN	FINAL	PLAN	FINAL		
			PLAN	FINAL	PLAN	FINAL	PLAN	FINAL	PLAN	FINAL	PLAN	FINAL	PLAN	FINAL								
611-1-1	ITSFM SUBSURFACE DOCUMENTATION - PROJECT LENGTH	MI																			12.174	
611-2-2	ITSFM LOCATION DOCUMENTATION - ITS SITE	EA			1														1		1	
630-2-11	CONDUIT (F&I) (OPEN TRENCH)	LF			565		2955												3520		3520	
630-2-14	CONDUIT (F&I) (ABOVE GROUND)	LF					10												10		10	
630-2-15	CONDUIT (F&I) (BRIDGE MOUNT)	LF					190												190		190	
633-1-121	FIBER OPTIC CABLE (F&I) (UNDERGROUND) (2-12 FIBERS)	LF			115		3325												3440		3440	
633-1-124	FIBER OPTIC CABLE (F&I) (UNDERGROUND) (97-144 FIBERS)	LF	645		700		4520		5760		5910		5710		2220				25465		74800	
633-2-31	FIBER OPTIC CONNECTION (INSTALL) (SPLICE)	EA													144				144		288	
633-2-32	FIBER OPTIC CONNECTION (INSTALL) (TERMINATION)	EA			12		12												24		24	
633-3-11	FIBER OPTIC CONNECTION HARDWARE (F&I) (SPLICE ENCLOSURE)	EA													1				1		2	
633-3-12	FIBER OPTIC CONNECTION HARDWARE (F&I) (SPLICE TRAY)	EA													1				1		2	
633-3-14	FIBER OPTIC CONNECTION HARDWARE (F&I) (BUFFER TUBE FAN OUT KIT)	EA			1		1												2		2	
633-3-16	FIBER OPTIC CONNECTION HARDWARE (F&I) (PATCH PANEL - FIELD TERMINATED)	EA			1		1												2		2	
633-6	FIBER OPTIC LOCATOR	DA																			350	
635-2-11	PULL & SPLICE BOX (F&I) (13" X 24" COVER SIZE)	EA			2														2		2	
635-2-12	PULL & SPLICE BOX (F&I) (24" X 36" COVER SIZE)	EA			1		5												6		6	
646-2-130	ALUMINUM POLE (F&I) (30')	EA			1														1		1	
660-3-11	VEHICLE DETECTION SYSTEM - MICROWAVE (F&I) (CABINET EQUIPMENT)	EA			1														1		1	
660-3-12	VEHICLE DETECTION SYSTEM - MICROWAVE (F&I) (ABOVE GROUND EQUIPMENT)	EA			1														1		1	
676-2-500	ITS CABINET (ADJUST/MODIFY)	EA					1												1		1	
676-3-10	SMALL EQUIPMENT ENCLOSURE (F&I) (LESS THAN 10"W X 13"H X 11"D)	EA			2														2		2	
684-1-1	MANAGED FIELD ETHERNET SWITCH (F&I)	EA					1												1		1	
684-1-6	MANAGED FIELD ETHERNET SWITCH (REMOVE-CABINET TO REMAIN))	EA					1												1		1	
684-5-1	MEDIA CONVERTER (F&I)	EA			1		1												2		2	
695-5-1	TRAFFIC MONITORING SITE SOLAR POWER UNIT (F&I)	EA			1														1		1	
700-1-12	SINGLE POST SIGN (F&I) (GROUND MOUNT) (12-20 SF)	AS			1														1		1	
700-12-21	SIGN BEACON (F&I) (GOUND MOUNT - SOLAR POWERED) (ONE BEACON)	AS			1														1		1	

<p>REVISIONS</p> <table border="1"> <thead> <tr> <th>DATE</th> <th>DESCRIPTION</th> <th>DATE</th> <th>DESCRIPTION</th> </tr> </thead> <tbody> <tr> <td> </td> <td> </td> <td> </td> <td> </td> </tr> </tbody> </table>				DATE	DESCRIPTION	DATE	DESCRIPTION					<p>FALLER, DAVIS & ASSOCIATES, INC. 4200 W. CYPRESS ST., SUITE 500 TAMPA, FLORIDA 33607-4168 PATRICIA T. CHRISTIE, P.E. NO.: 60049</p>			<p>STATE OF FLORIDA DEPARTMENT OF TRANSPORTATION</p> <table border="1"> <thead> <tr> <th>ROAD NO.</th> <th>COUNTY</th> <th>FINANCIAL PROJECT ID</th> </tr> </thead> <tbody> <tr> <td>SR 93</td> <td>COLLIER</td> <td>444008-4-52-01</td> </tr> </tbody> </table>			ROAD NO.	COUNTY	FINANCIAL PROJECT ID	SR 93	COLLIER	444008-4-52-01	<p>TABULATION OF QUANTITIES</p> <p>(2)</p>				<p>SHEET NO.</p> <p>IT-4</p>
DATE	DESCRIPTION	DATE	DESCRIPTION																									
ROAD NO.	COUNTY	FINANCIAL PROJECT ID																										
SR 93	COLLIER	444008-4-52-01																										

GENERAL NOTES:

1. A COPY OF THE COMPLETED ITSFM DATA SHALL BE SUBMITTED FOR REVIEW AT LEAST 4 WEEKS PRIOR TO FINAL ACCEPTANCE. IT IS THE CONTRACTOR'S RESPONSIBILITY TO OBTAIN ALL TRAINING AND CERTIFICATIONS NECESSARY TO COLLECT AND SUBMIT THE ITSFM DATA. DOCUMENTATION SHOWING THE NECESSARY TRAINING AND CERTIFICATIONS HAVE BEEN OBTAINED AND/OR SCHEDULED SHALL BE SUBMITTED WITHIN 2 WEEKS OF BEGINNING WORK ON THE FMS INFRASTRUCTURE. CONTACT D1- ITSFM@DOT.STATE.FL.US FOR ITSFM INFORMATION.

AT MINIMUM, THE FOLLOWING ITSFM ATTRIBUTE FORMS SHALL BE COMPLETED:

- ITSFM031, ITSFM040
- ITSFM032, ITSFM041
- ITSFM033, ITSFM042
- ITSFM034, ITSFM043
- ITSFM035, ITSFM056
- ITSFM036, ITSFM057
- ITSFM037, ITSFM058
- ITSFM039, ITSFM061

AT MINIMUM, THE FOLLOWING ITSFM FEATURE IMPORT TEMPLATES SHALL BE COMPLETED:

- ITSFM5001
- ITSFM5002
- ITSFM5004
- ITSFM5005
- ITSFM5006
- ITSFM5007
- ITSFM5015

2. AT THE COMPLETION OF THE PROJECT, PROVIDE AS-BUILT PLANS IN ELECTRONIC FORM (PDF) TO:

FDOT TRAFFIC OPERATIONS
 JUSTIN MERRITT, TSM&O FMS SPECIALIST IV
 801 N. BROADWAY AVE
 P.O. BOX 1249
 BARTOW, FL 33830-1249
 EMAIL: JUSTIN.MERRITT@DOT.STATE.FL.US

3. WEATHERED LIMESTONE/CAPROCK WAS ENCOUNTERED WITHIN SOIL BORINGS. THIS MATERIAL IS ROCK AND IS LOCATED IN SHALLOW DEPTHS. EXCAVATION INTO AND/OR THROUGH LIMESTONE/CAPROCK WILL BE DIFFICULT AND WILL REQUIRE NONCONVENTIONAL CONSTRUCTION TECHNIQUES AND SPECIALIZED EQUIPMENT. LIMESTONE/CAPROCK IS POROUS AND WILL BE DIFFICULT TO DEWATER.

PAY ITEM NOTES:

1. 633-1-121: INCLUDES PRE-TERMINATED ENDS FOR INSTALLATION IN PROPOSED PATCH PANEL AT EACH CABINET LOCATION (WARNING SIGN AND HUB 87.8 NB CABINETS).
2. 633-1-124: FIBER OPTIC CABLE BACKBONE TO BE 144-COUNT SM.

THE 144-COUNT SM FIBER TO BE INSTALLED WITHIN THE SPARE ITS CONDUIT.

REEL TO REEL SPLICES FOR THE NEW CABLE SHALL ONLY OCCUR AT EXISTING SPLICE LOCATIONS. NO NEW SPLICE LOCATIONS SHALL BE INTRODUCED SOLELY FOR REEL TO REEL SPLICES. COST FOR ALL REEL TO REEL SPLICES TO BE INCIDENTAL TO 144 COUNT SM FOC.




ALL FIBER OPTIC CONDUIT INSTALLATION SHALL INCLUDE A COMPLETE FACILITY LOCATE MARKING SYSTEM TO INCLUDE:





- ABOVE GROUND ROUTE MARKERS.
- CURB MOUNTED MARKER TABS.
- ELECTRONIC UTILITY LOCATE SYSTEM.
- INSTALLING WIRING GROUNDING UNITS (WGU) AT EACH SPLICE VAULT.

3. 633-2-31: EACH COLORED BUFFER TO BE SPLICED TO SAME COLORED BUFFER.

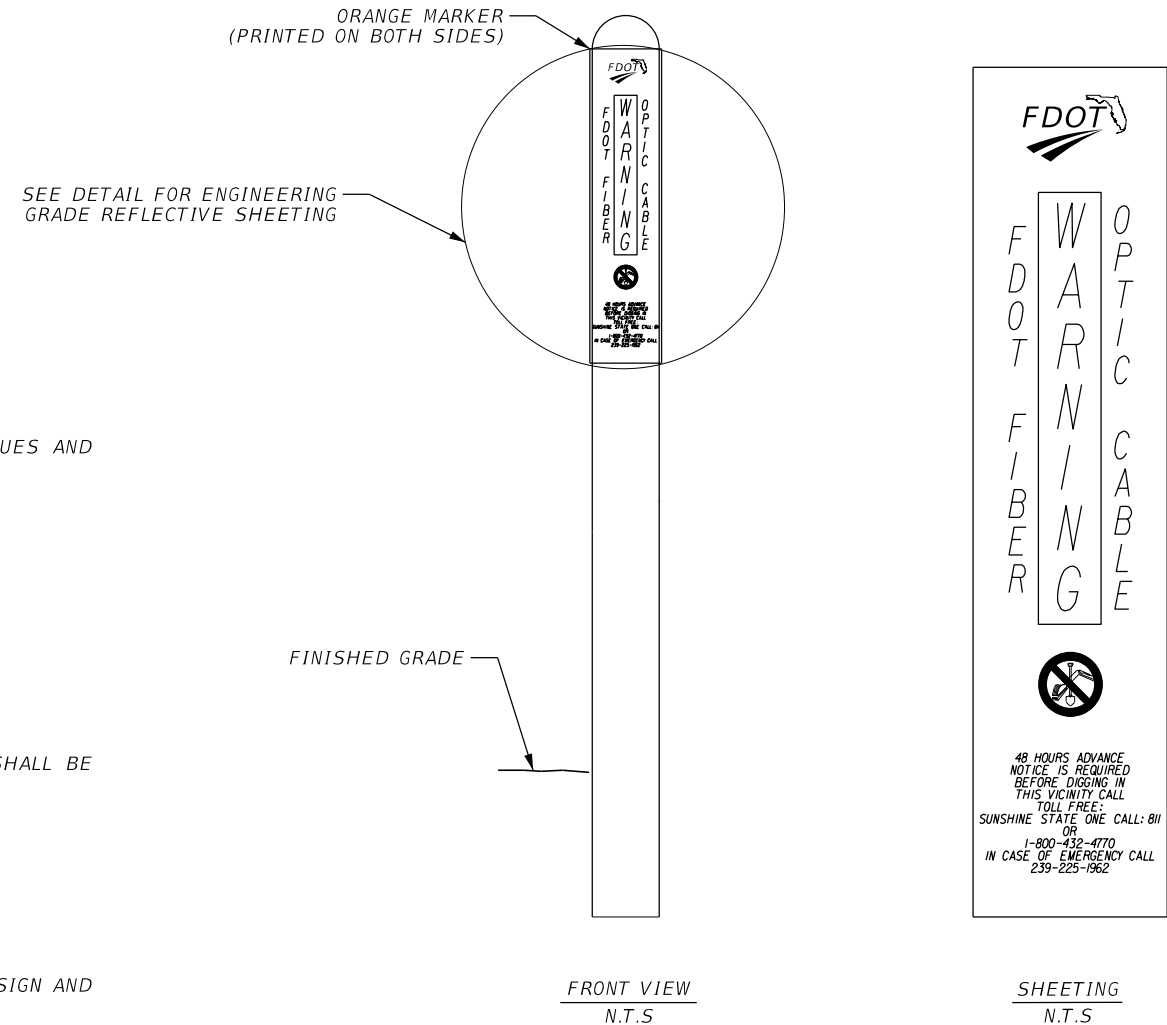
4. 633-3-15: INCLUDES A SINGLE PANEL HOUSING TO STORE SLACK PRE-TERMINATED FIBER OPTIC CABLES IN EACH CABINET LOCATION (WARNING SIGN AND HUB 87.8 NB CABINETS).

LEGEND:

- = EXISTING CONDUIT WITH 144-COUNT SM INSTALLED IN THE SPARE
- = PROPOSED BRIDGE MOUNT CONDUIT
- = PROPOSED OPEN TRENCH CONDUIT
-  = EXISTING FIBER OPTIC PULLBOX
-  = PROPOSED FIBER OPTIC PULLBOX
-  = EXISTING SPLICE VAULT

-  = PROPOSED PULLBOX
-  = MVDS
-  = CCTV
-  = ROAD WEATHER INFORMATION STATION

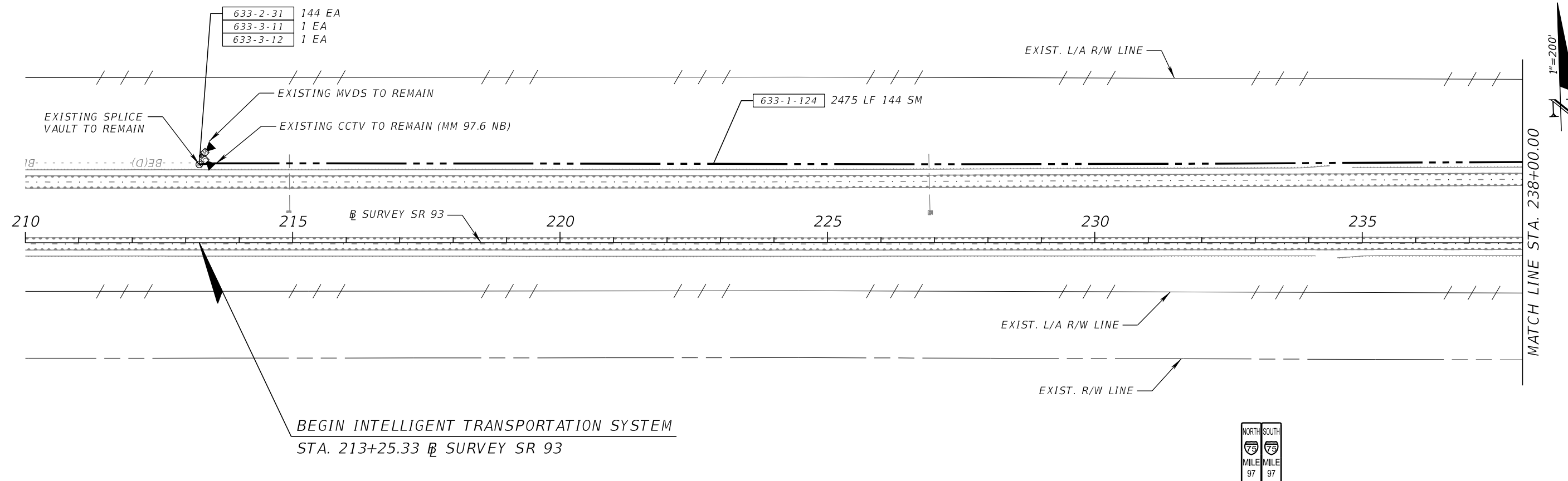
FIBER OPTIC CABLE ROUTE MARKER



REVISIONS				FALLER, DAVIS & ASSOCIATES, INC. 4200 W. CYPRESS ST., SUITE 500 TAMPA, FLORIDA 33607-4168 PATRICIA T. CHRISTIE, P.E. NO.: 60049	STATE OF FLORIDA DEPARTMENT OF TRANSPORTATION			SHEET NO. IT-5
DATE	DESCRIPTION	DATE	DESCRIPTION		ROAD NO.	COUNTY	FINANCIAL PROJECT ID	
					SR 93	COLLIER	444008-4-52-01	

GENERAL NOTES

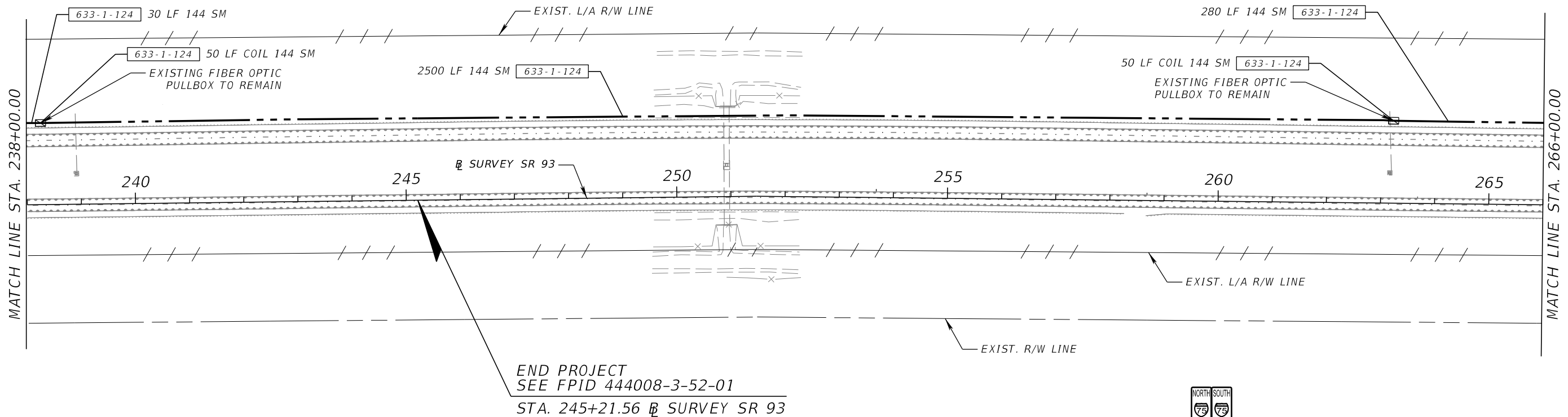
THE OFFICIAL RECORD OF THIS SHEET IS THE ELECTRONIC FILE DIGITALLY SIGNED AND SEALED UNDER RULE 61G15-23.004, F.A.C.



THE OFFICIAL RECORD OF THIS SHEET IS THE ELECTRONIC FILE DIGITALLY SIGNED AND SEALED UNDER RULE 61G15-23.004, F.A.C.

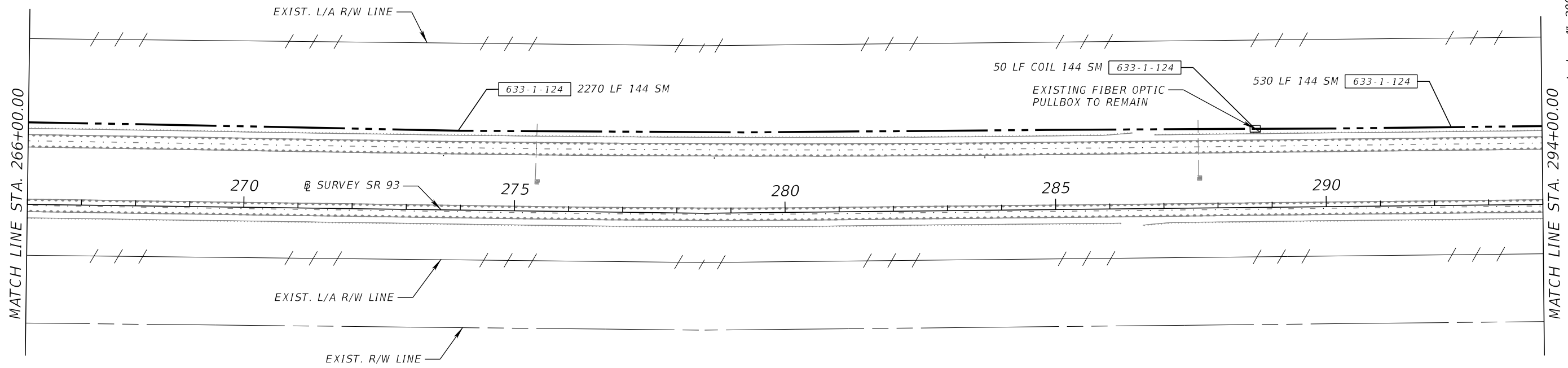
REVISIONS				FALLER, DAVIS & ASSOCIATES, INC. 4200 W. CYPRESS ST., SUITE 500 TAMPA, FLORIDA 33607-4168 PATRICIA T. CHRISTIE, P.E. NO.: 60049	STATE OF FLORIDA DEPARTMENT OF TRANSPORTATION			INTELLIGENT TRANSPORTATION SYSTEMS PLANS (1)	SHEET NO.
DATE	DESCRIPTION	DATE	DESCRIPTION		ROAD NO.	COUNTY	FINANCIAL PROJECT ID		IT-6
					SR 93	COLLIER	444008-4-52-01		

SR 93 (I-75)



END PROJECT
SEE FPID 444008-3-52-01
STA. 245+21.56 SURVEY SR 93

SR 93 (I-75)



STA. 275 SURVEY SR 93

REVISIONS			
DATE	DESCRIPTION	DATE	DESCRIPTION

FALLER, DAVIS & ASSOCIATES, INC.
4200 W. CYPRESS ST., SUITE 500
TAMPA, FLORIDA 33607-4168
PATRICIA T. CHRISTIE, P.E. NO.: 60049

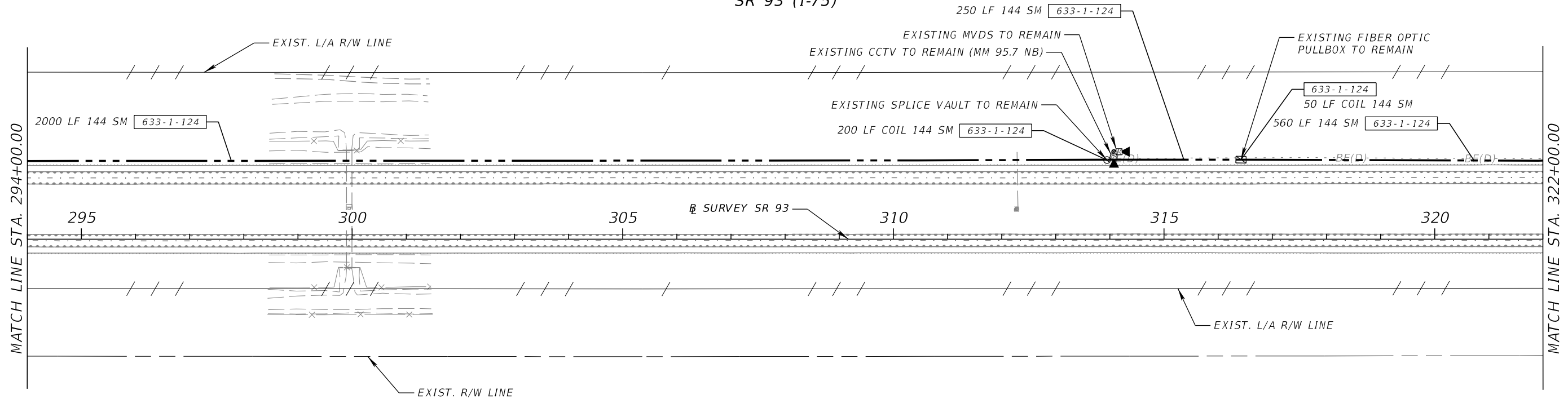
STATE OF FLORIDA DEPARTMENT OF TRANSPORTATION		
ROAD NO.	COUNTY	FINANCIAL PROJECT ID
SR 93	COLLIER	444008-4-52-01

INTELLIGENT TRANSPORTATION
SYSTEMS PLANS (2)

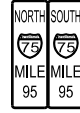
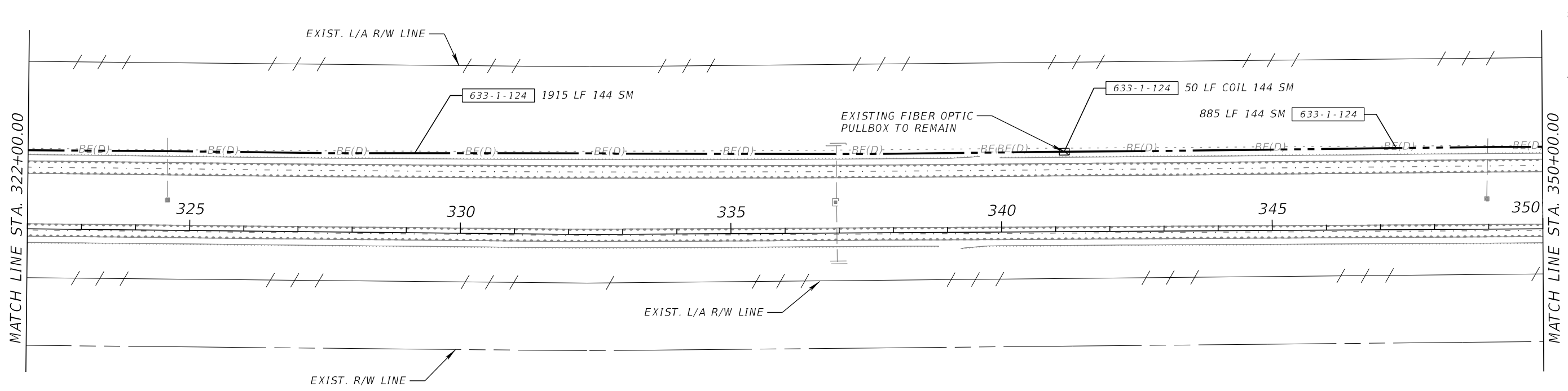
SHEET NO.
IT-7

THE OFFICIAL RECORD OF THIS SHEET IS THE ELECTRONIC FILE DIGITALLY SIGNED AND SEALED UNDER RULE 61G15-23.004, F.A.C.

SR 93 (I-75)

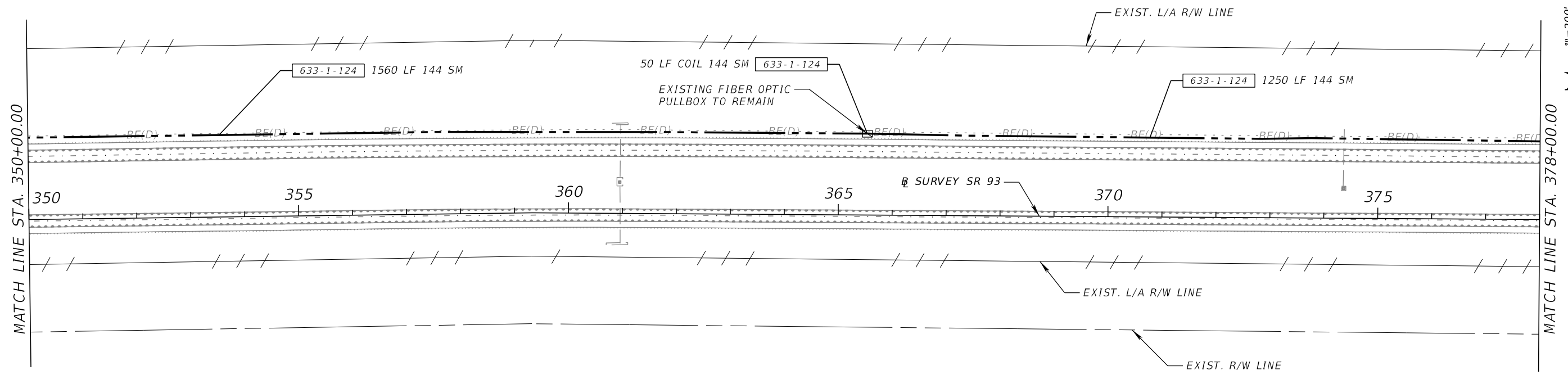


SR 93 (I-75)



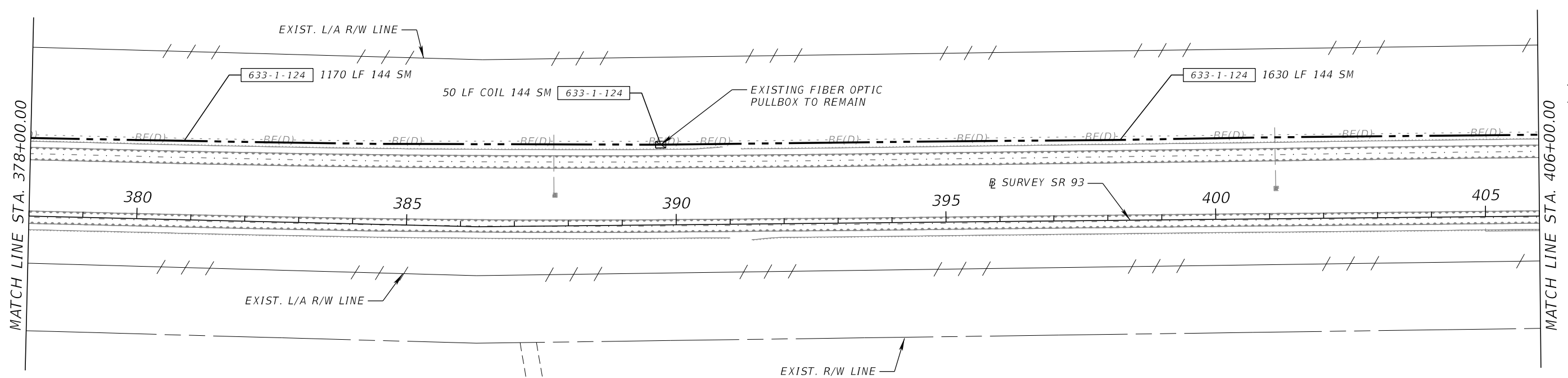
REVISIONS				FALLER, DAVIS & ASSOCIATES, INC. 4200 W. CYPRESS ST., SUITE 500 TAMPA, FLORIDA 33607-4168 PATRICIA T. CHRISTIE, P.E. NO.: 60049	STATE OF FLORIDA DEPARTMENT OF TRANSPORTATION			INTELLIGENT TRANSPORTATION SYSTEMS PLANS (3)	SHEET NO.
DATE	DESCRIPTION	DATE	DESCRIPTION		ROAD NO.	COUNTY	FINANCIAL PROJECT ID		IT-8
					SR 93	COLLIER	444008-4-52-01		

SR 93 (I-75)



NORTH	SOUTH
MILE	MILE
.5	.5

SR 93 (I-75)

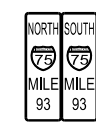
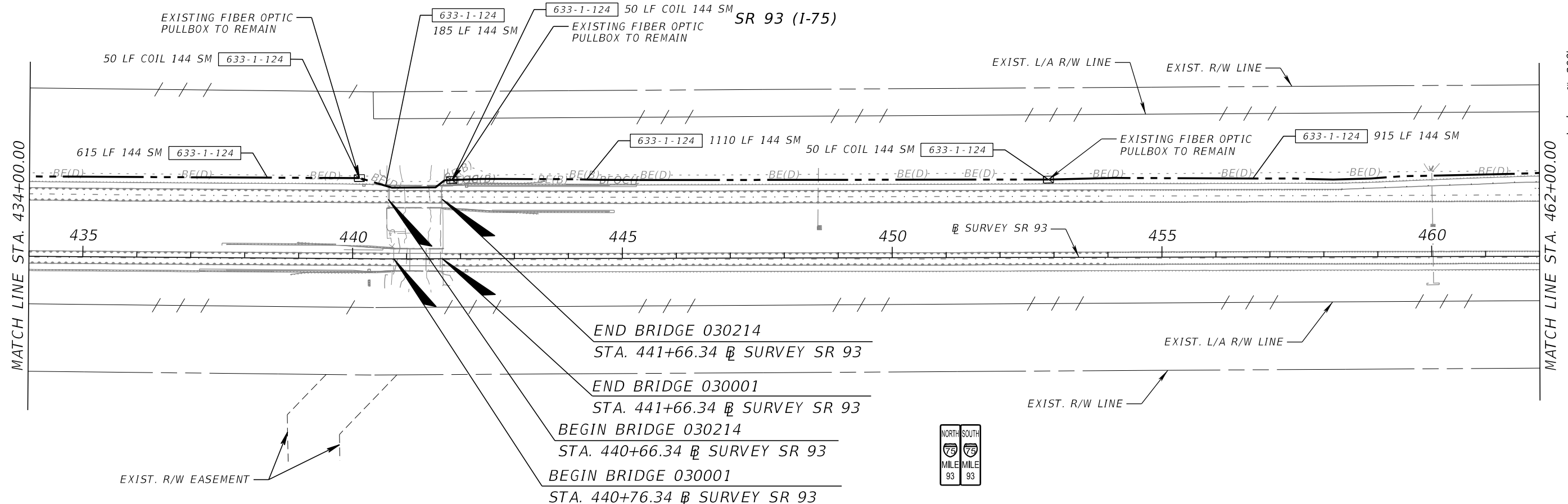
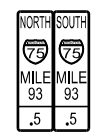
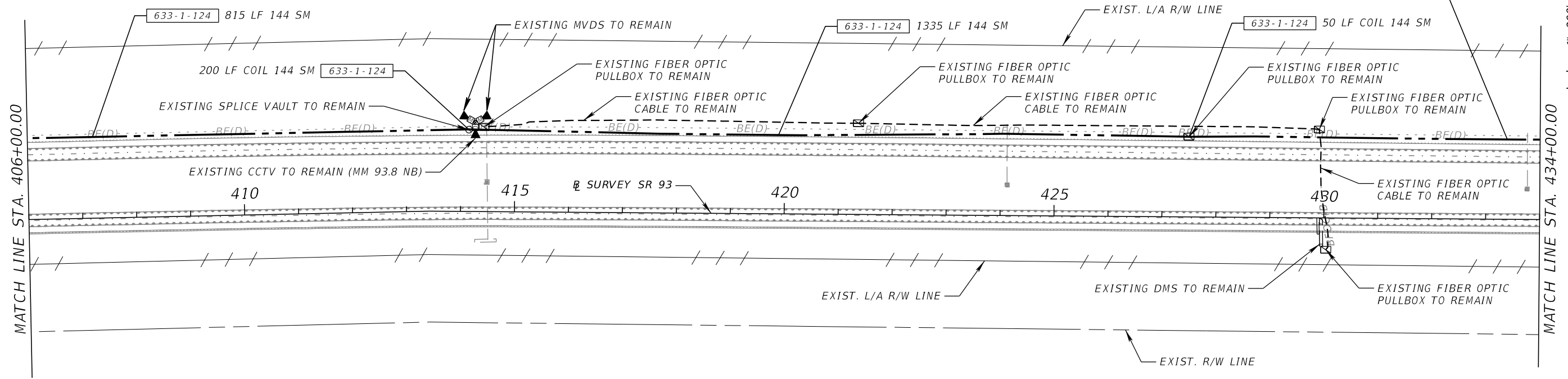


NORTH	SOUTH
MILE	MILE
.5	.5

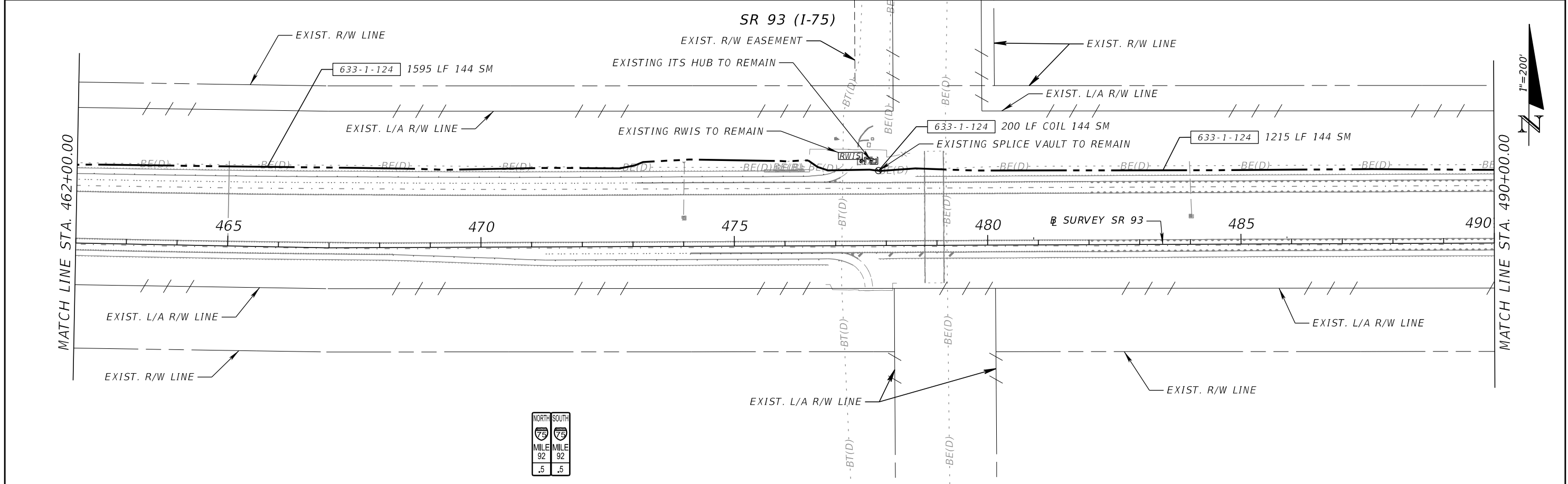
REVISIONS				FALLER, DAVIS & ASSOCIATES, INC. 4200 W. CYPRESS ST., SUITE 500 TAMPA, FLORIDA 33607-4168 PATRICIA T. CHRISTIE, P.E. NO.: 60049	STATE OF FLORIDA DEPARTMENT OF TRANSPORTATION			INTELLIGENT TRANSPORTATION SYSTEMS PLANS (4)	SHEET NO.
DATE	DESCRIPTION	DATE	DESCRIPTION		ROAD NO.	COUNTY	FINANCIAL PROJECT ID		IT-9
					SR 93	COLLIER	444008-4-52-01		

THE OFFICIAL RECORD OF THIS SHEET IS THE ELECTRONIC FILE DIGITALLY SIGNED AND SEALED UNDER RULE 61G15-23.004, F.A.C.

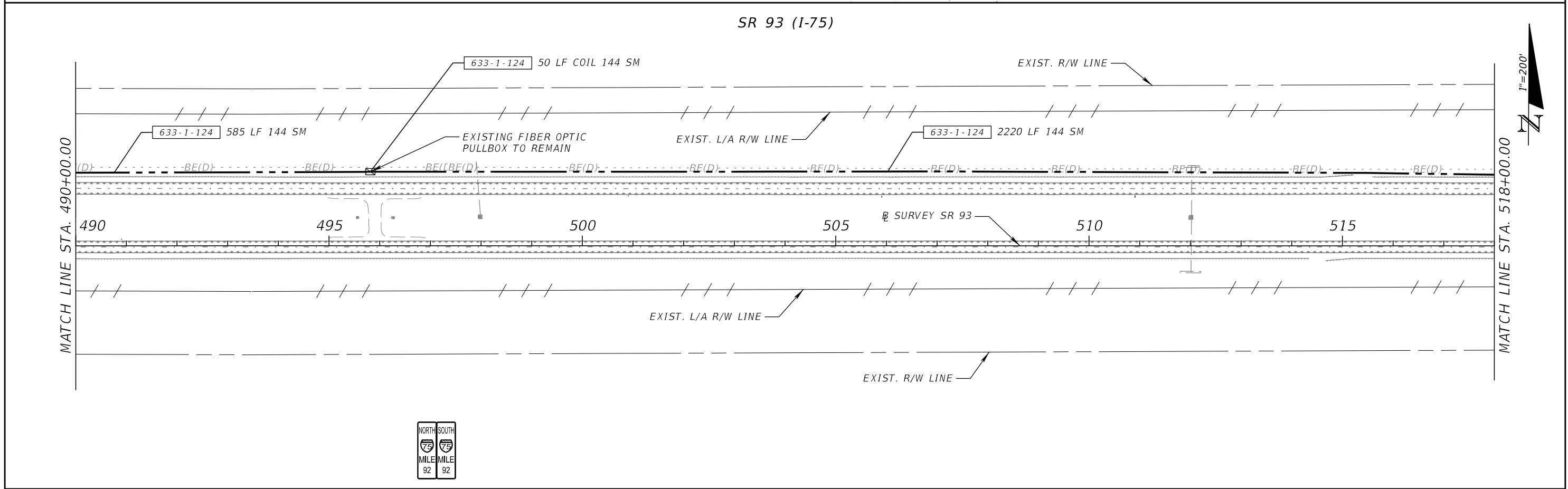
SR 93 (I-75)



REVISIONS				FALLER, DAVIS & ASSOCIATES, INC. 4200 W. CYPRESS ST., SUITE 500 TAMPA, FLORIDA 33607-4168 PATRICIA T. CHRISTIE, P.E. NO.: 60049	STATE OF FLORIDA DEPARTMENT OF TRANSPORTATION			INTELLIGENT TRANSPORTATION SYSTEMS PLANS (5)	SHEET NO.
DATE	DESCRIPTION	DATE	DESCRIPTION		ROAD NO.	COUNTY	FINANCIAL PROJECT ID		
					SR 93	COLLIER	444008-4-52-01		IT-10



NORTH	SOUTH
MILE	MILE
.92	.92
.5	.5



NORTH	SOUTH
MILE	MILE
.92	.92

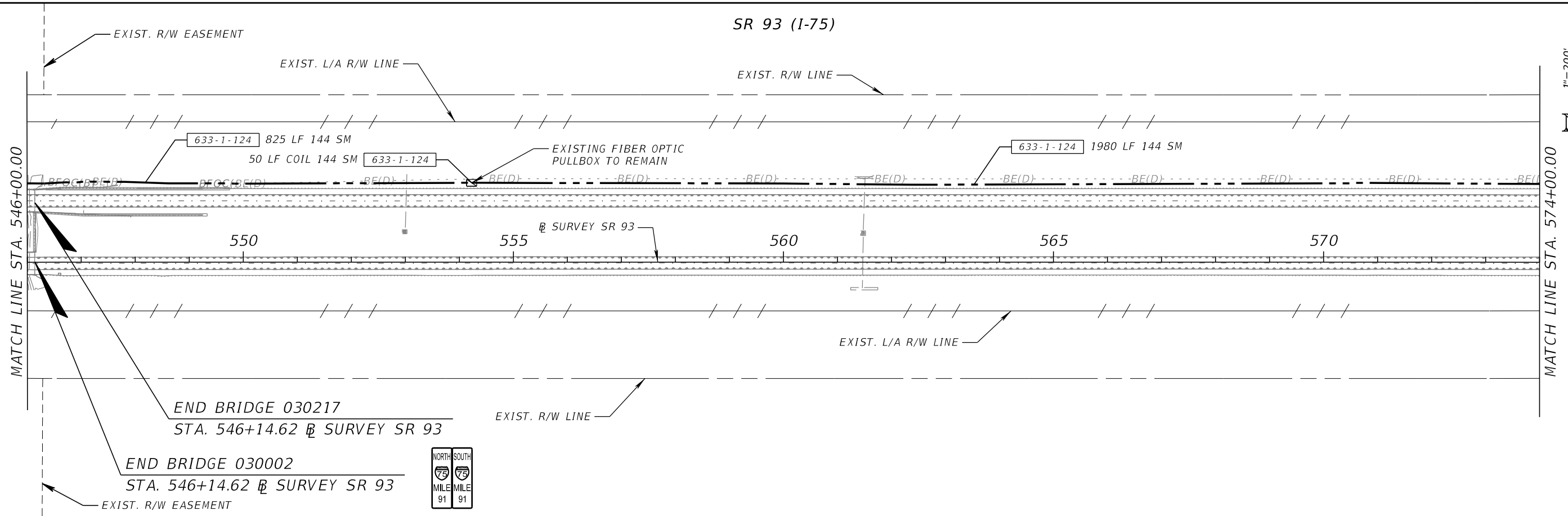
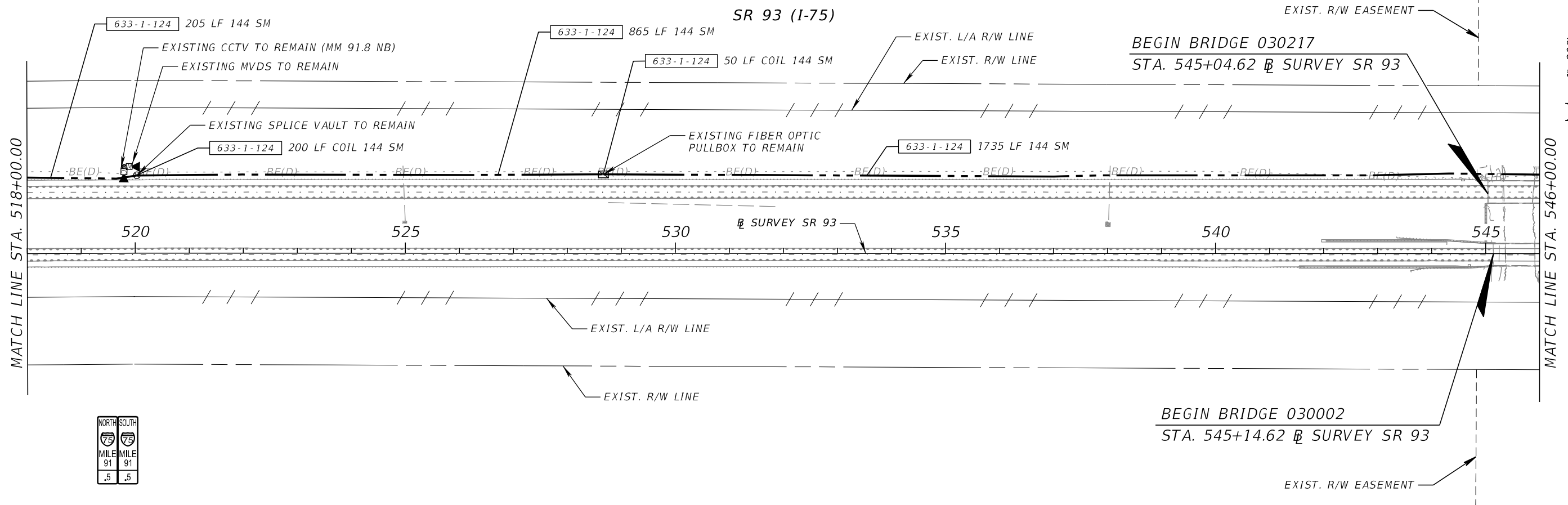
REVISIONS			
DATE	DESCRIPTION	DATE	DESCRIPTION

FALLER, DAVIS & ASSOCIATES, INC.
 4200 W. CYPRESS ST., SUITE 500
 TAMPA, FLORIDA 33607-4168
 PATRICIA T. CHRISTIE, P.E. NO.: 60049

STATE OF FLORIDA DEPARTMENT OF TRANSPORTATION		
ROAD NO.	COUNTY	FINANCIAL PROJECT ID
SR 93	COLLIER	444008-4-52-01

**INTELLIGENT TRANSPORTATION
 SYSTEMS PLANS (6)**

SHEET NO.
IT-11



REVISIONS			
DATE	DESCRIPTION	DATE	DESCRIPTION

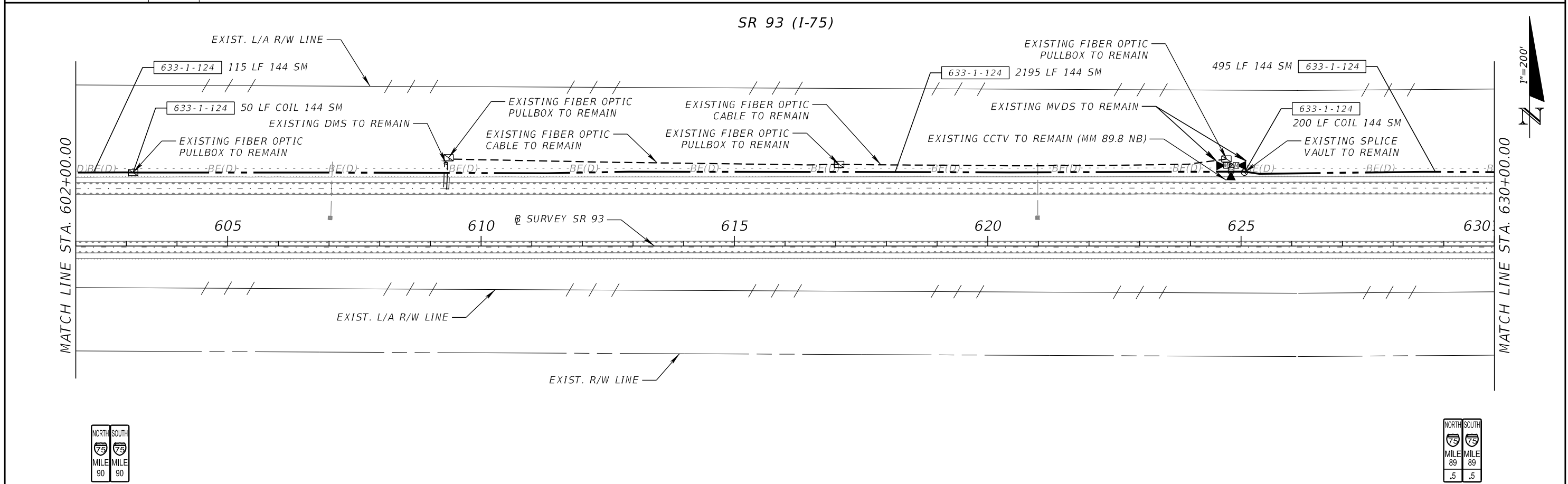
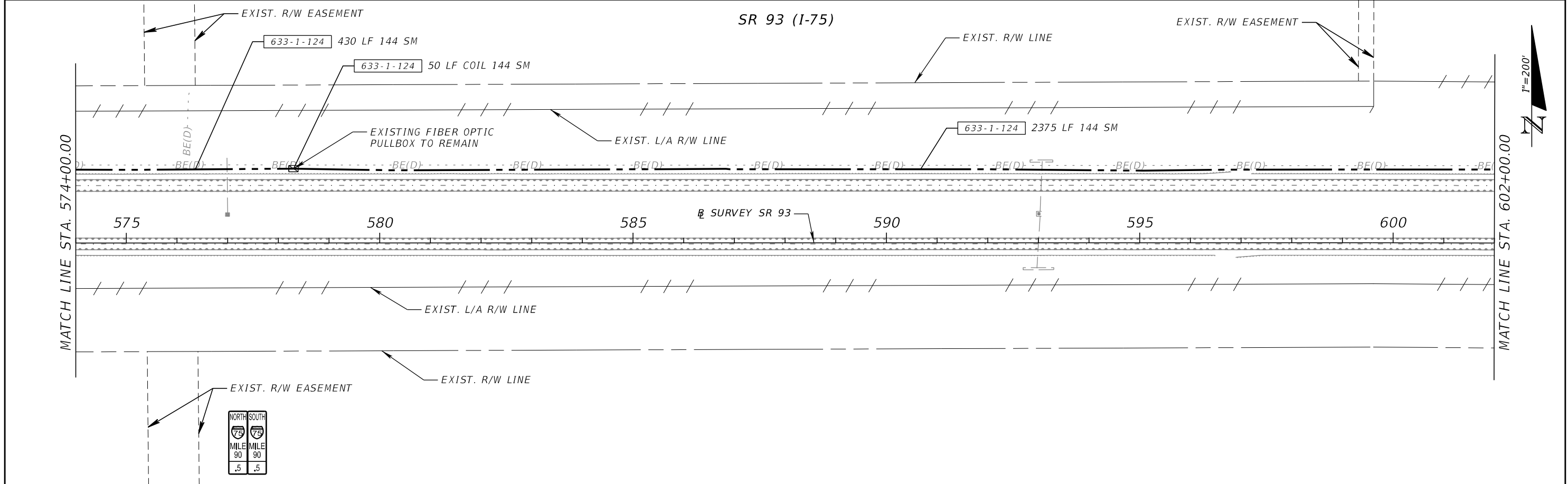
FALLER, DAVIS & ASSOCIATES, INC.
 4200 W. CYPRESS ST., SUITE 500
 TAMPA, FLORIDA 33607-4168
 PATRICIA T. CHRISTIE, P.E. NO.: 60049

STATE OF FLORIDA DEPARTMENT OF TRANSPORTATION		
ROAD NO.	COUNTY	FINANCIAL PROJECT ID
SR 93	COLLIER	444008-4-52-01

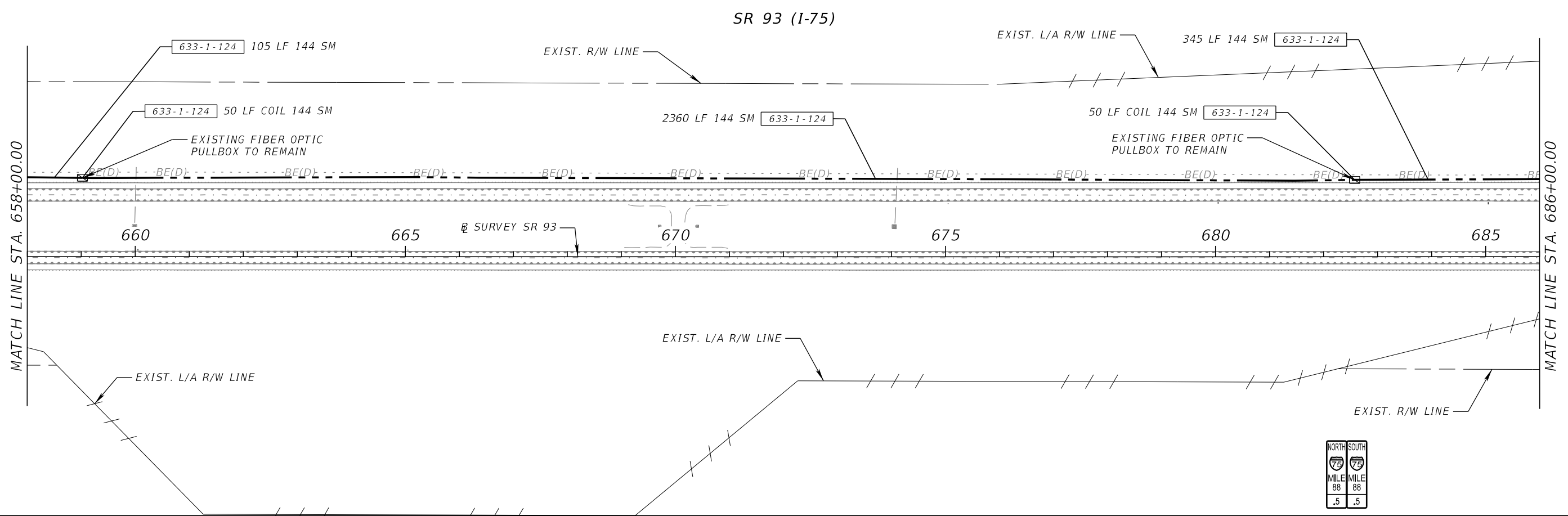
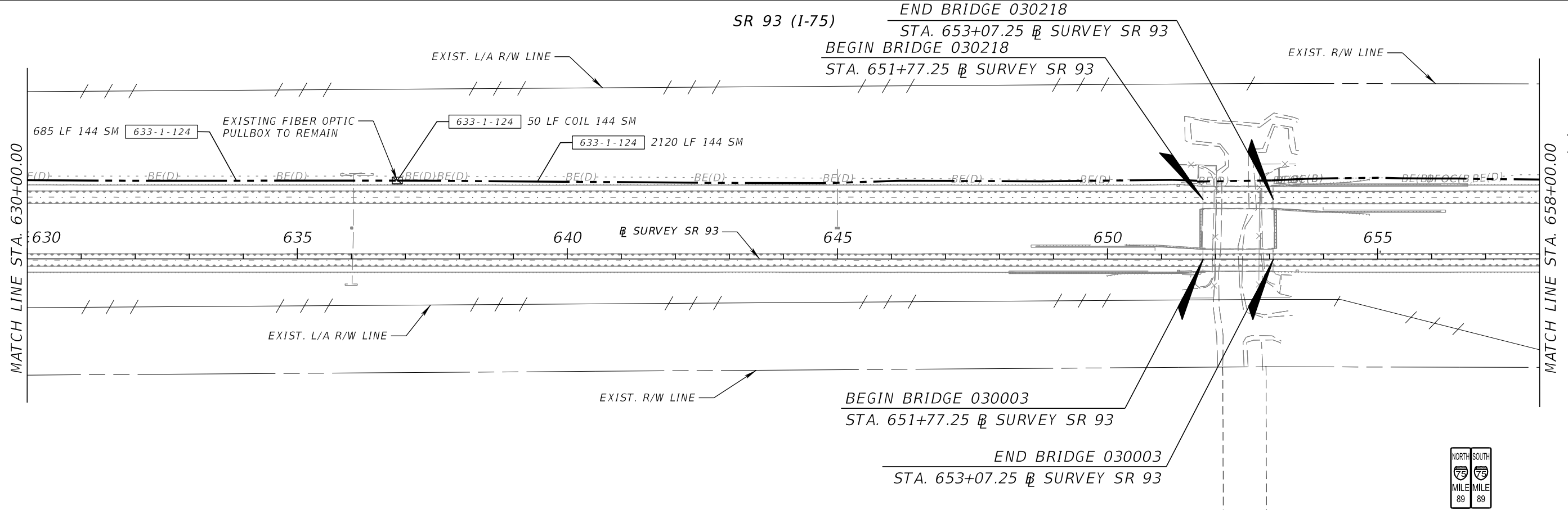
**INTELLIGENT TRANSPORTATION
 SYSTEMS PLANS (7)**

SHEET NO.
IT-12

THE OFFICIAL RECORD OF THIS SHEET IS THE ELECTRONIC FILE DIGITALLY SIGNED AND SEALED UNDER RULE 61G15-23.004, F.A.C.



REVISIONS				FALLER, DAVIS & ASSOCIATES, INC. 4200 W. CYPRESS ST., SUITE 500 TAMPA, FLORIDA 33607-4168 PATRICIA T. CHRISTIE, P.E. NO.: 60049	STATE OF FLORIDA DEPARTMENT OF TRANSPORTATION			INTELLIGENT TRANSPORTATION SYSTEMS PLANS (8)	SHEET NO.
DATE	DESCRIPTION	DATE	DESCRIPTION		ROAD NO.	COUNTY	FINANCIAL PROJECT ID		
					SR 93	COLLIER	444008-4-52-01		IT-13



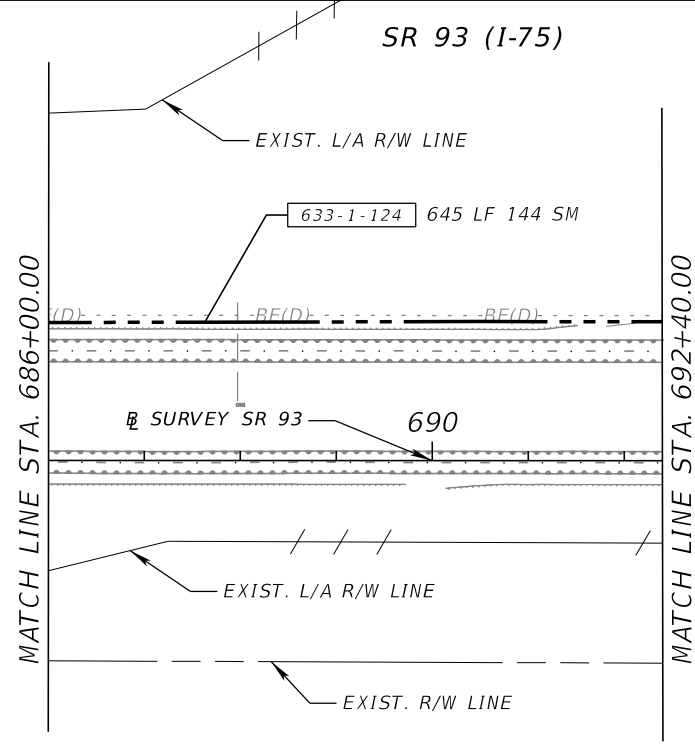
REVISIONS			
DATE	DESCRIPTION	DATE	DESCRIPTION

FALLER, DAVIS & ASSOCIATES, INC.
 4200 W. CYPRESS ST., SUITE 500
 TAMPA, FLORIDA 33607-4168
 PATRICIA T. CHRISTIE, P.E. NO.: 60049

STATE OF FLORIDA DEPARTMENT OF TRANSPORTATION		
ROAD NO.	COUNTY	FINANCIAL PROJECT ID
SR 93	COLLIER	444008-4-52-01

**INTELLIGENT TRANSPORTATION
 SYSTEMS PLANS (9)**

SHEET NO.
IT-14



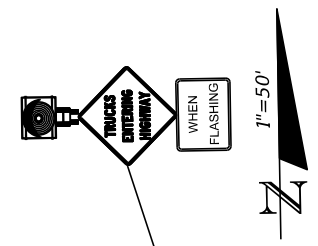
THE OFFICIAL RECORD OF THIS SHEET IS THE ELECTRONIC FILE DIGITALLY SIGNED AND SEALED UNDER RULE 61G15-23.004, F.A.C.

REVISIONS				FALLER, DAVIS & ASSOCIATES, INC. 4200 W. CYPRESS ST., SUITE 500 TAMPA, FLORIDA 33607-4168 PATRICIA T. CHRISTIE, P.E. NO.: 60049	STATE OF FLORIDA DEPARTMENT OF TRANSPORTATION			INTELLIGENT TRANSPORTATION SYSTEMS PLANS (10)	SHEET NO.
DATE	DESCRIPTION	DATE	DESCRIPTION		ROAD NO.	COUNTY	FINANCIAL PROJECT ID		IT-15
					SR 93	COLLIER	444008-4-52-01		

SR 93 (I-75)

NOTE: WHEN A VEHICLE PASSES THE MVDS DETECTION ZONE A FLASHING BEACON WILL BE ACTIVATED AND WILL FLASH FOR 120 SECONDS.

- SIGN AE
- 48' X 48'
- W16-13P
- 24' X 18'
- 15 LF 630-2-11
- 15 LF 12 SM 633-1-121
- 12 EA 633-2-32
- 1 EA 633-3-14
- 1 EA 633-3-16
- 1 EA 676-3-10
- 1 EA 684-5-1
- 1 AS 700-1-12
- 1 AS 700-12-21
- 15 LF COMPOSITE CABLE FOR MVDS STA. 699+15



- 10 LF 630-2-11
- 1 EA 646-2-130
- 1 EA 660-3-11
- 1 EA 660-3-12
- 1 EA 676-3-10
- 1 EA 695-5-1
- 10 LF COMPOSITE CABLE FOR MVDS STA. 694+03

635-2-11 1 EA

633-1-124 700 LF 144 SM

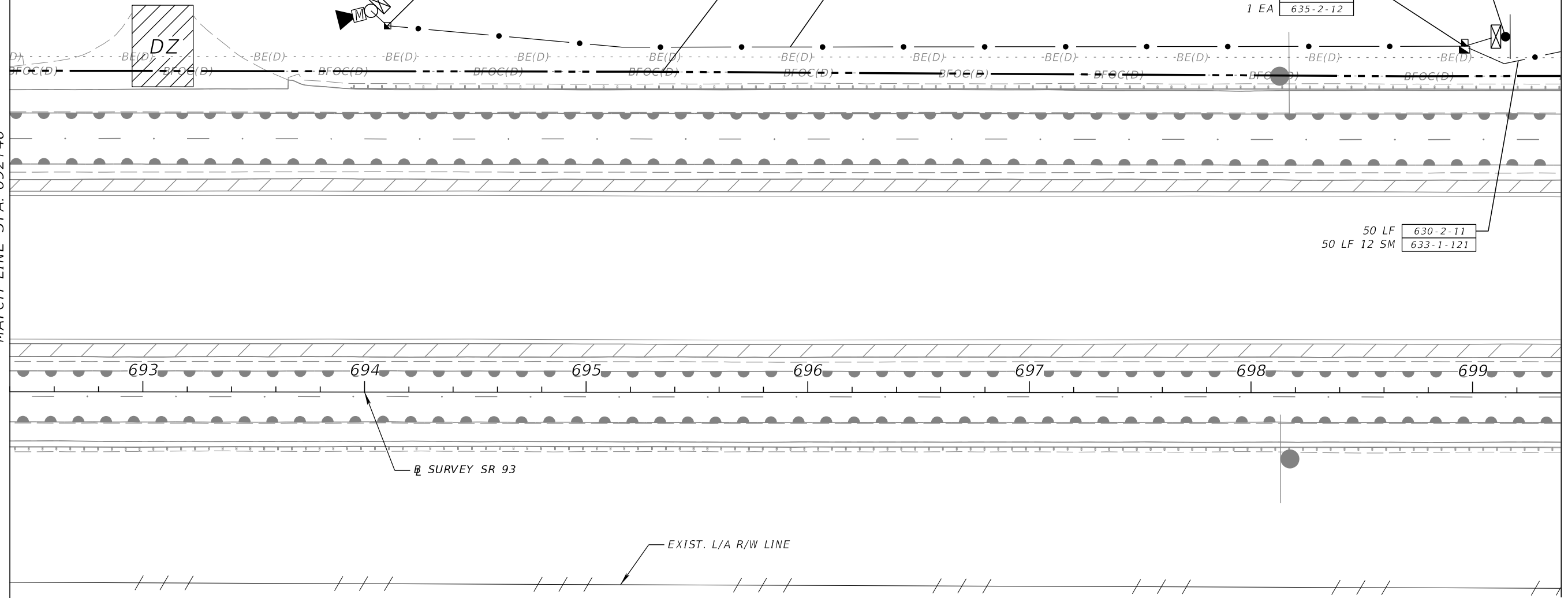
630-2-11 490 LF
490 LF COMPOSITE CABLE FOR MVDS

50 LF COIL 12 SM 633-1-121
1 EA 635-2-11
1 EA 635-2-12

50 LF 630-2-11
50 LF 12 SM 633-1-121

MATCH LINE STA. 692+40

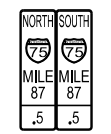
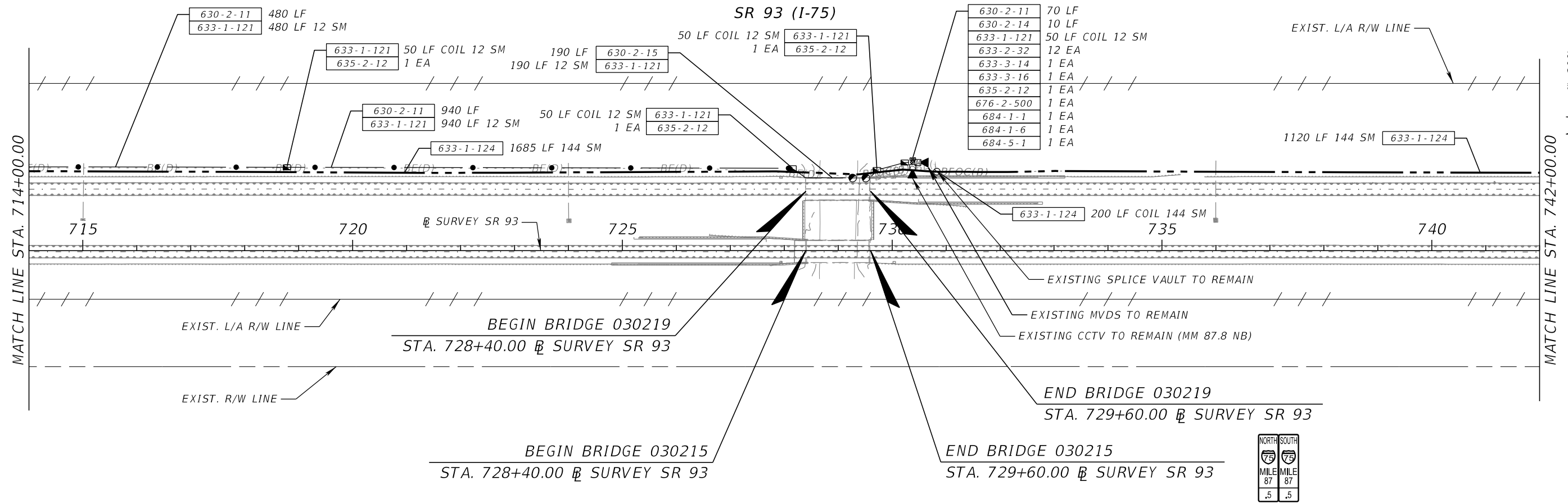
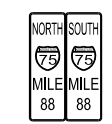
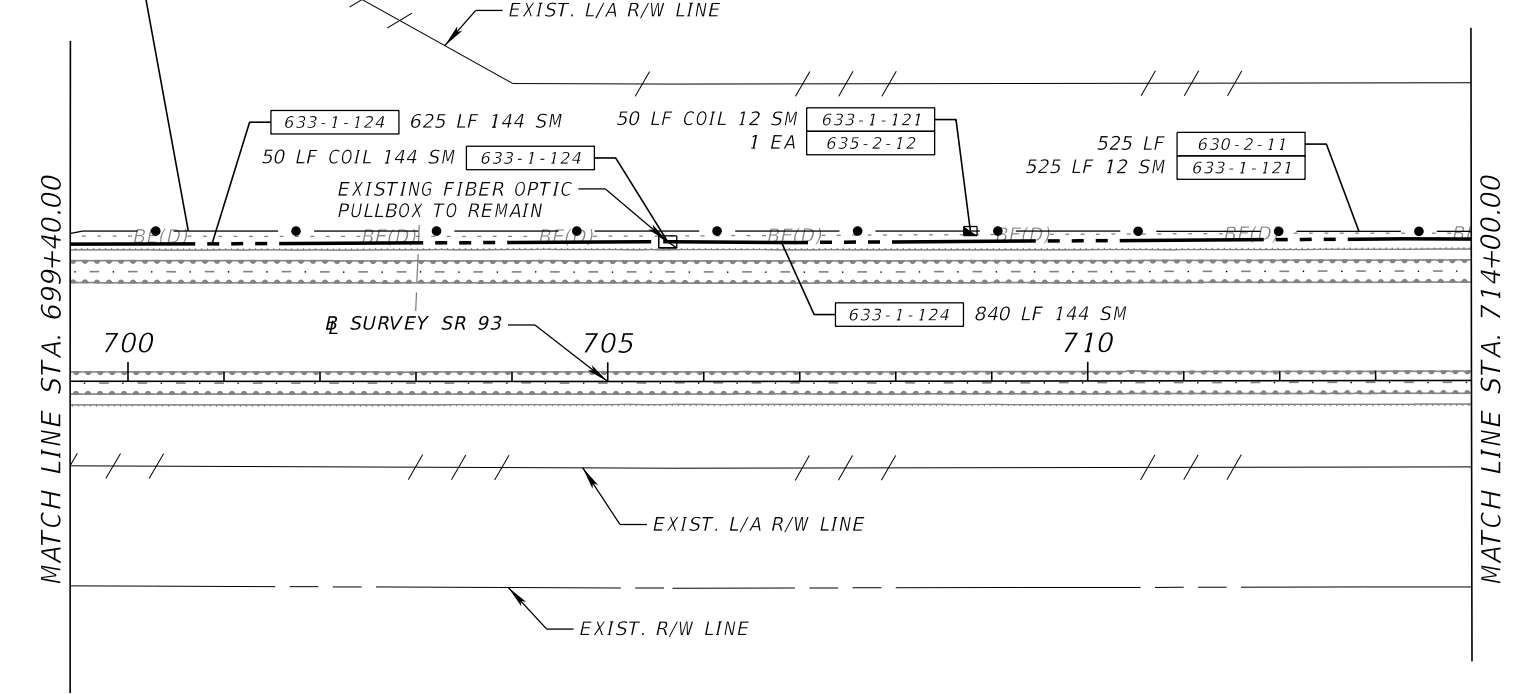
MATCH LINE STA. 699+40



REVISIONS				FALLER, DAVIS & ASSOCIATES, INC. 4200 W. CYPRESS ST., SUITE 500 TAMPA, FLORIDA 33607-4168 PATRICIA T. CHRISTIE, P.E. NO.: 60049	STATE OF FLORIDA DEPARTMENT OF TRANSPORTATION			INTELLIGENT TRANSPORTATION SYSTEMS PLANS (11)	SHEET NO.
DATE	DESCRIPTION	DATE	DESCRIPTION		ROAD NO.	COUNTY	FINANCIAL PROJECT ID		
					SR 93	COLLIER	444008-4-52-01		IT-16

940 LF 630-2-11
940 LF 12 SM 633-1-121

SR 93 (I-75)



REVISIONS			
DATE	DESCRIPTION	DATE	DESCRIPTION

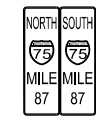
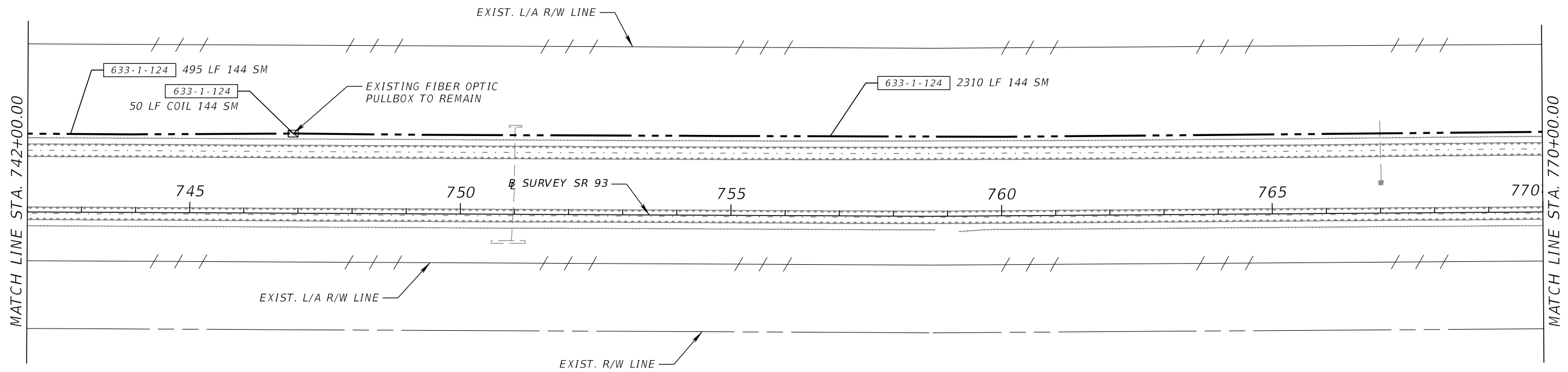
FALLER, DAVIS & ASSOCIATES, INC.
4200 W. CYPRESS ST., SUITE 500
TAMPA, FLORIDA 33607-4168
PATRICIA T. CHRISTIE, P.E. NO.: 60049

STATE OF FLORIDA DEPARTMENT OF TRANSPORTATION		
ROAD NO.	COUNTY	FINANCIAL PROJECT ID
SR 93	COLLIER	444008-4-52-01

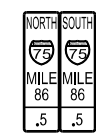
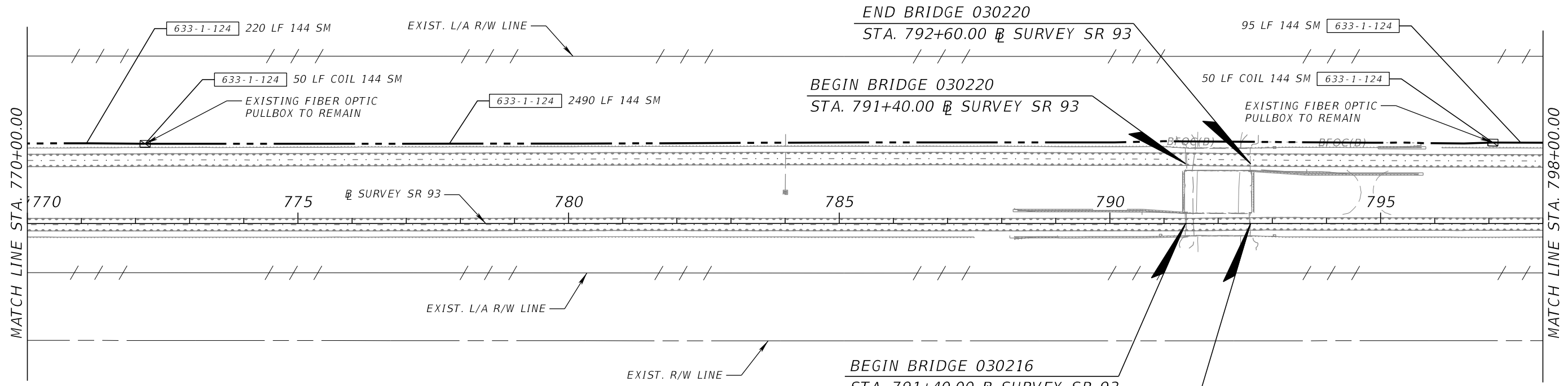
**INTELLIGENT TRANSPORTATION
SYSTEMS PLANS (12)**

SHEET NO.
IT-17

SR 93 (I-75)



SR 93 (I-75)



REVISIONS			
DATE	DESCRIPTION	DATE	DESCRIPTION

FALLER, DAVIS & ASSOCIATES, INC.
 4200 W. CYPRESS ST., SUITE 500
 TAMPA, FLORIDA 33607-4168
 PATRICIA T. CHRISTIE, P.E. NO.: 60049

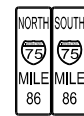
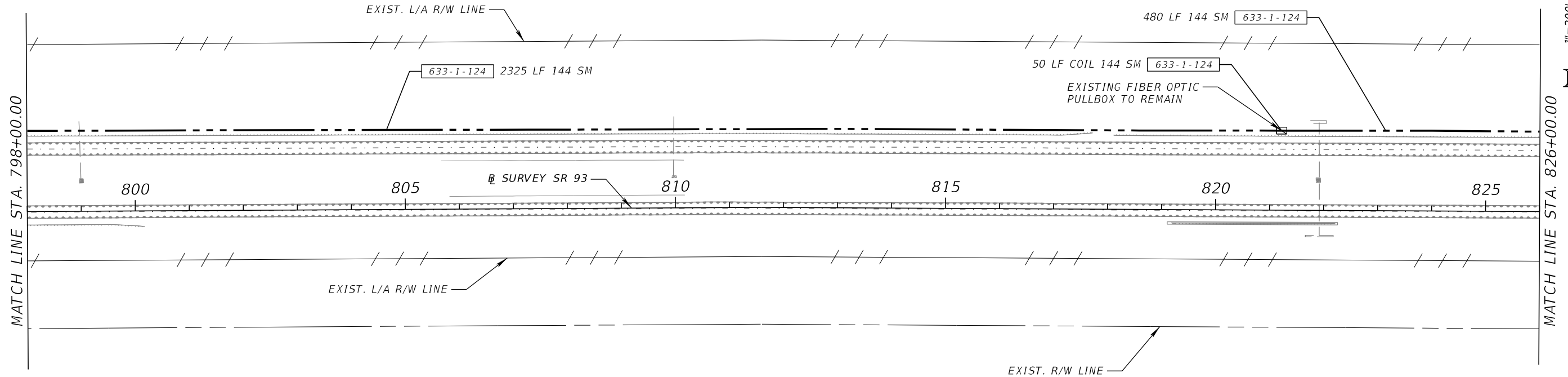
STATE OF FLORIDA DEPARTMENT OF TRANSPORTATION		
ROAD NO.	COUNTY	FINANCIAL PROJECT ID
SR 93	COLLIER	444008-4-52-01

**INTELLIGENT TRANSPORTATION
 SYSTEMS PLANS (13)**

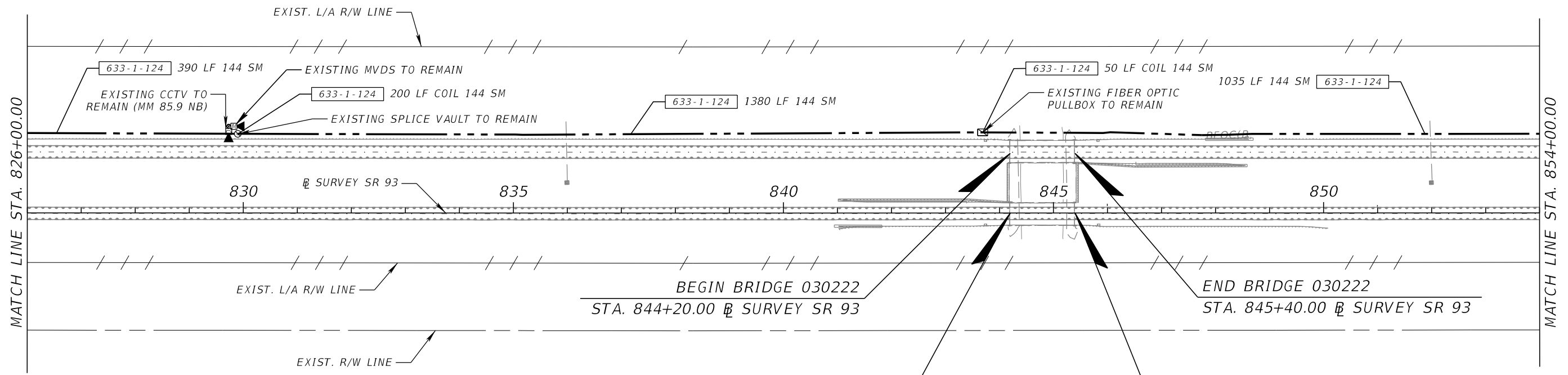
SHEET NO.
IT-18

THE OFFICIAL RECORD OF THIS SHEET IS THE ELECTRONIC FILE DIGITALLY SIGNED AND SEALED UNDER RULE 61G15-23.004, F.A.C.

SR 93 (I-75)



SR 93 (I-75)



REVISIONS			
DATE	DESCRIPTION	DATE	DESCRIPTION

FALLER, DAVIS & ASSOCIATES, INC.
 4200 W. CYPRESS ST., SUITE 500
 TAMPA, FLORIDA 33607-4168
 PATRICIA T. CHRISTIE, P.E. NO.: 60049

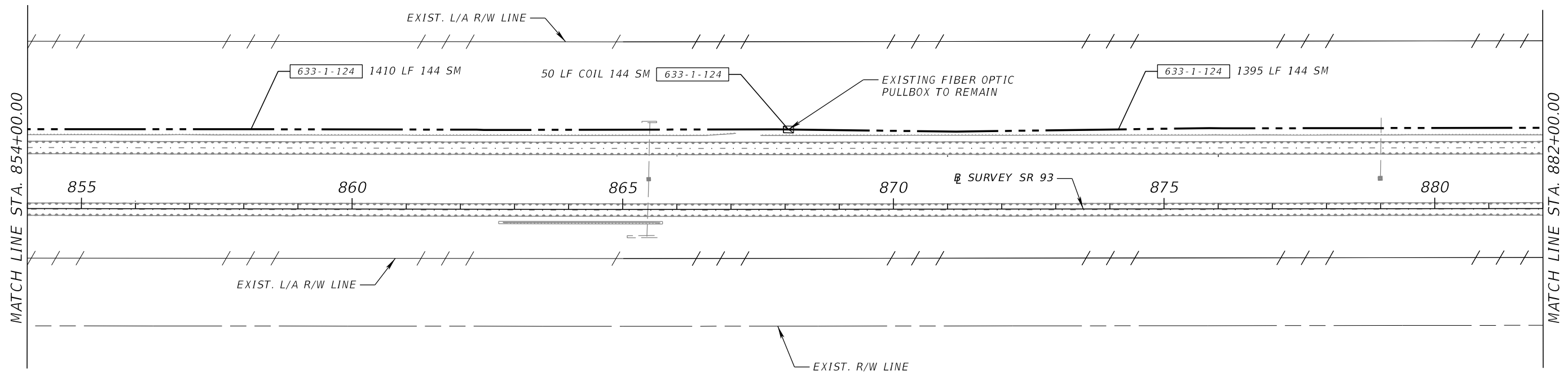
STATE OF FLORIDA DEPARTMENT OF TRANSPORTATION		
ROAD NO.	COUNTY	FINANCIAL PROJECT ID
SR 93	COLLIER	444008-4-52-01

**INTELLIGENT TRANSPORTATION
 SYSTEMS PLANS (14)**

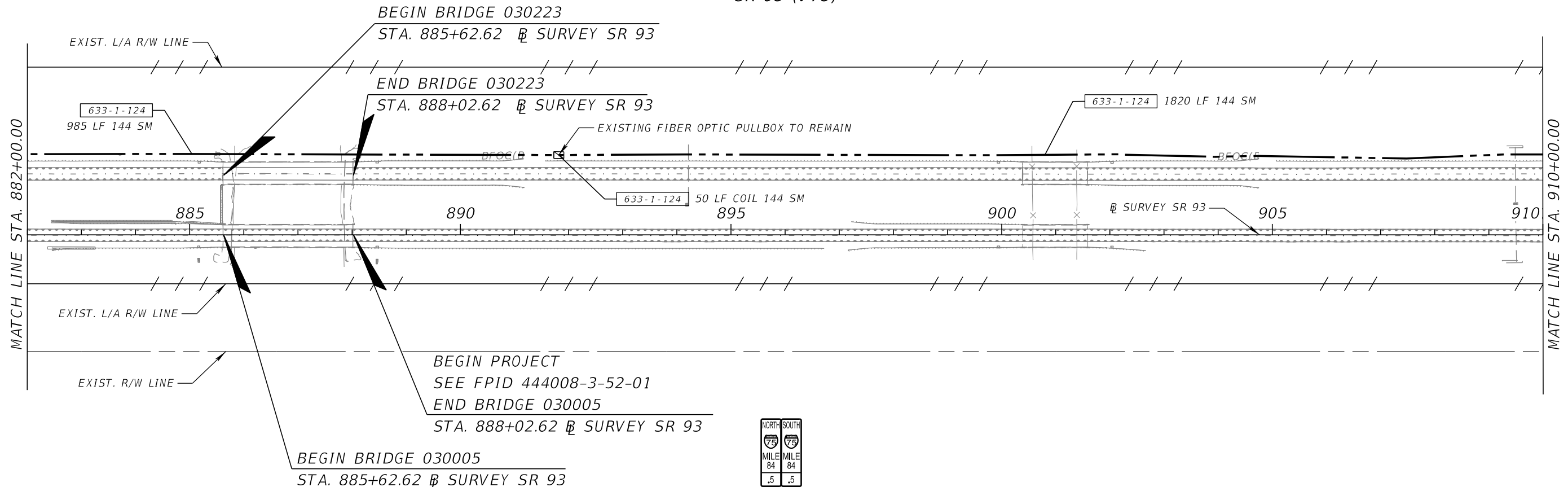
SHEET NO.
IT-19

THE OFFICIAL RECORD OF THIS SHEET IS THE ELECTRONIC FILE DIGITALLY SIGNED AND SEALED UNDER RULE 61G15-23.004, F.A.C.

SR 93 (I-75)



SR 93 (I-75)



REVISIONS			
DATE	DESCRIPTION	DATE	DESCRIPTION

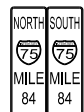
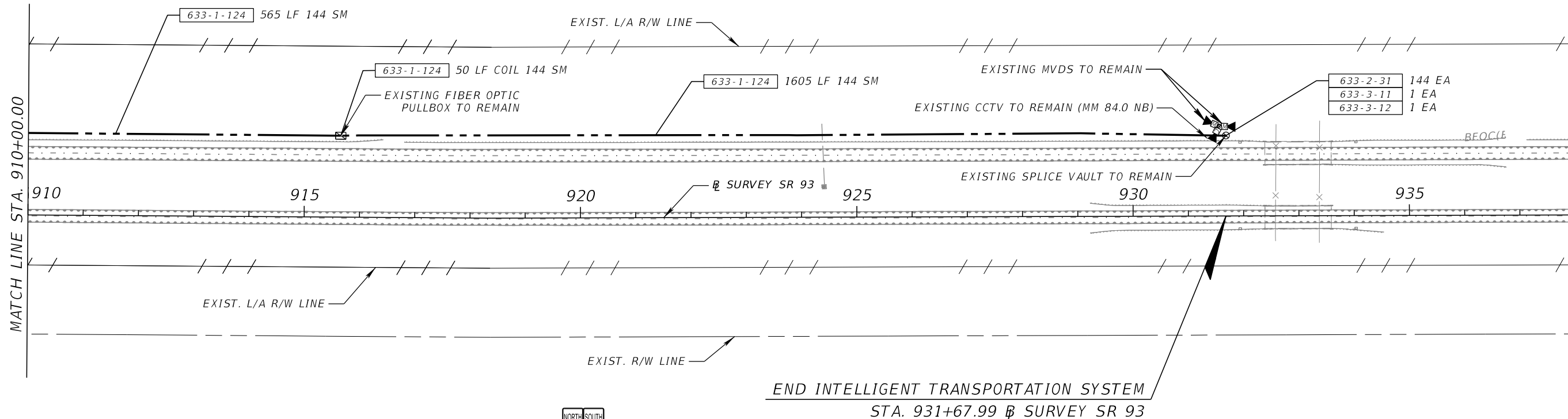
FALLER, DAVIS & ASSOCIATES, INC.
 4200 W. CYPRESS ST., SUITE 500
 TAMPA, FLORIDA 33607-4168
 PATRICIA T. CHRISTIE, P.E. NO.: 60049

STATE OF FLORIDA DEPARTMENT OF TRANSPORTATION		
ROAD NO.	COUNTY	FINANCIAL PROJECT ID
SR 93	COLLIER	444008-4-52-01

**INTELLIGENT TRANSPORTATION
 SYSTEMS PLANS (15)**

SHEET NO.
IT-20

SR 93 (I-75)



THE OFFICIAL RECORD OF THIS SHEET IS THE ELECTRONIC FILE DIGITALLY SIGNED AND SEALED UNDER RULE 61G15-23.004, F.A.C.

REVISIONS				FALLER, DAVIS & ASSOCIATES, INC. 4200 W. CYPRESS ST., SUITE 500 TAMPA, FLORIDA 33607-4168 PATRICIA T. CHRISTIE, P.E. NO.: 60049	STATE OF FLORIDA DEPARTMENT OF TRANSPORTATION			INTELLIGENT TRANSPORTATION SYSTEMS PLANS (16)	SHEET NO.
DATE	DESCRIPTION	DATE	DESCRIPTION		ROAD NO.	COUNTY	FINANCIAL PROJECT ID		IT-21
					SR 93	COLLIER	444008-4-52-01		

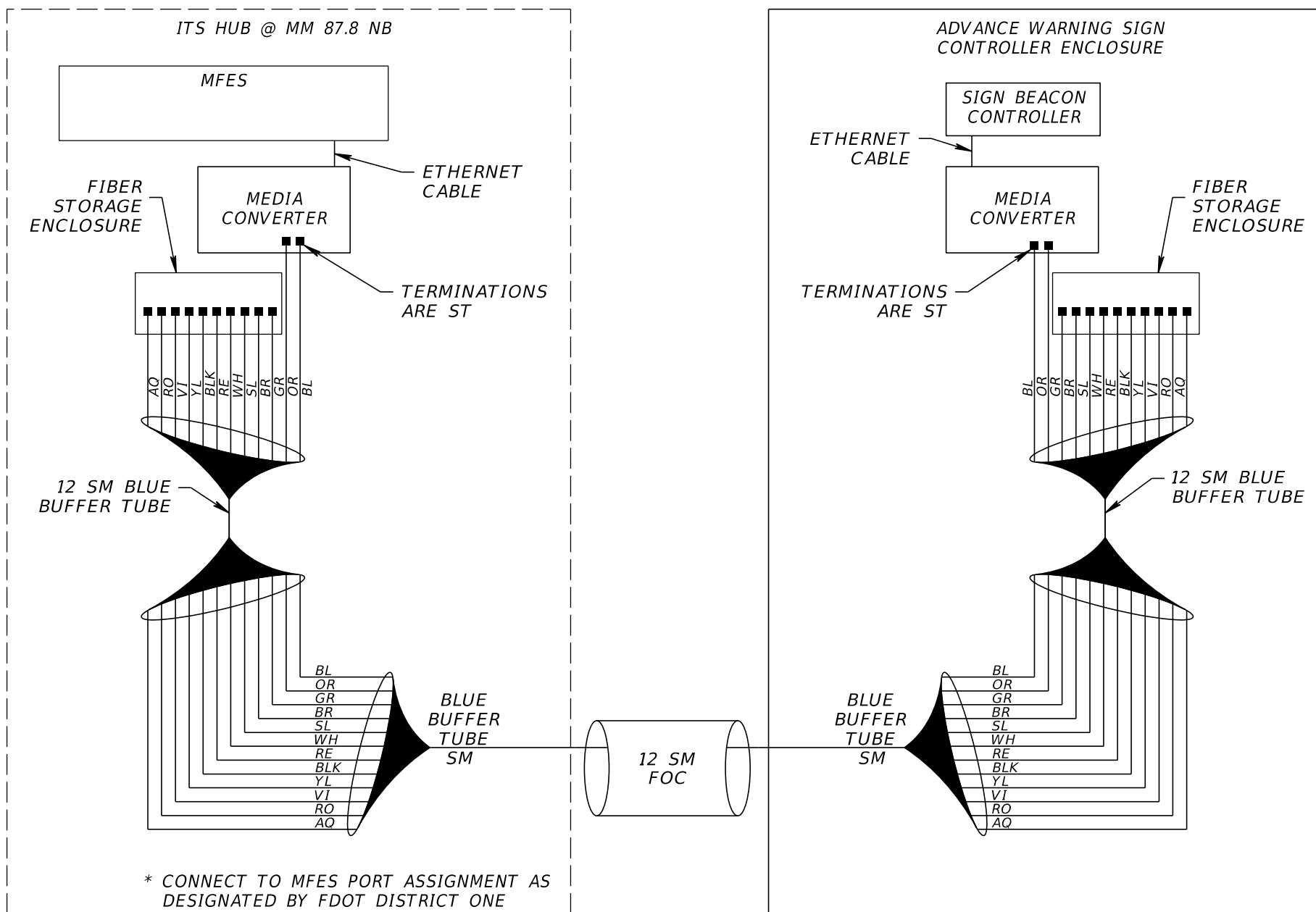
ADVANCE WARNING SIGN TYPICAL SPLICE DIAGRAM

LEGEND

- = FUSION SPLICE
- = EXISTING FUSION SPLICE
- × = NON-CONNECTED FIBER
- = PRE-TERMINATED CONNECTION
- = PROPOSED TERMINATION
- = PROPOSED CABLE/EQUIPMENT
- - = EXISTING CABLE/EQUIPMENT
- MFES = MANAGED FIELD ETHERNET SWITCH
- SM = SINGLE MODE
- MM = MULTIMODE
- ST = STRAIGHT TIP CONNECTOR
- SC = SQUARE CONNECTOR
- LC = LUCENT CONNECTOR
- FOC = FIBER OPTIC CABLE
- TX = TRANSMIT
- RX = RECEIVE
- BL = BLUE
- OR = ORANGE
- GR = GREEN
- BR = BROWN
- SL = SLATE
- WH = WHITE
- RE = RED
- BLK = BLACK
- YL = YELLOW
- VI = VIOLET
- RO = ROSE
- AQ = AQUA

NOTES:

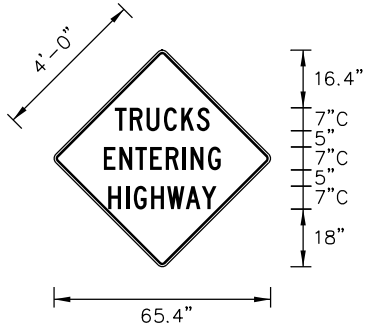
1. ALL EXISTING FIBER OPTIC SPLICES AND TERMINATIONS TO REMAIN UNLESS OTHERWISE SHOWN.
2. ALL EXISTING CONNECTIONS ARE TO REMAIN UNLESS OTHERWISE NOTED.
3. UTILIZE OPTICAL TRANSCEIVERS COMPATIBLE WITH THE PROPOSED MFES.
4. SLACK FOC SHALL NOT BE COILED INSIDE THE CABINET. SLACK FOC SHALL BE COILED AND STORED IN THE SPLICE BOX OR SPLICE VAULT ADJACENT TO THE CABINET.



REVISIONS				FALLER, DAVIS & ASSOCIATES, INC. 4200 W. CYPRESS ST., SUITE 500 TAMPA, FLORIDA 33607-4168 PATRICIA T. CHRISTIE, P.E. NO.: 60049	STATE OF FLORIDA DEPARTMENT OF TRANSPORTATION			SHEET NO. SPLICE DIAGRAM IT-22
DATE	DESCRIPTION	DATE	DESCRIPTION		ROAD NO.	COUNTY	FINANCIAL PROJECT ID	
					SR 93	COLLIER	444008-4-52-01	

SIGN NAME	AE	QTY	SIGN NUMBER	STATION(S)	
PANEL	BORDER		699+15 LT		
WIDTH	5'-6"	WIDTH	0.75"		
HEIGHT	5'-6"	RADII	3"		
LEGEND	Black	COLOR	Black		
COLOR	Yellow				
SYMBOL(S)	ANGLE	X	Y	WID	HT
SIGN NUMBER	NUMBER OF POSTS	CLEARANCE Edge Of Land	COLUMN SIZE	AVERAGE LENGTH	

BORDER
R=3"
TH=0.75"
IN=0.50"



NO. OF LIGHT FIXTURES	FIXTURE SPACING	PHOTOMETRIC CURVE	WATT	VOLTAGE

COPY	T	R	U	C	K	S	L									
SPACE	18.7	4.6	5.1	5.3	4.8	3.9	18.7	29								
COPY	E	N	T	E	R	I	N	G	L							
SPACE	15.2	4.8	4.9	4.5	4.8	5.1	2.5	5.3	3.9	15.2	35.8					
COPY	H	I	G	H	W	A	Y	L								
SPACE	16.6	5.5	2.4	5.3	4.9	5.7	4.9	4.5	16.6	33.2						
COPY																
SPACE																
COPY																
SPACE																
COPY																
SPACE																

SIGN NAME	AE	QTY	SIGN NUMBER	STATION(S)	
PANEL	BORDER				
WIDTH	WIDTH				
HEIGHT	RADII				
LEGEND	COLOR				
COLOR					
SYMBOL(S)	ANGLE	X	Y	WID	HT
SIGN NUMBER	NUMBER OF POSTS	CLEARANCE Edge Of Land	COLUMN SIZE	AVERAGE LENGTH	

NO. OF LIGHT FIXTURES	FIXTURE SPACING	PHOTOMETRIC CURVE	WATT	VOLTAGE

COPY	T	R	U	C	K	S	L										
SPACE																	
COPY	E	N	T	E	R	I	N	G	L								
SPACE																	
COPY	H	I	G	H	W	A	Y	L									
SPACE																	
COPY																	
SPACE																	
COPY																	
SPACE																	
COPY																	
SPACE																	

SIGN NAME	AE	QTY	SIGN NUMBER	STATION(S)	
PANEL	BORDER				
WIDTH	WIDTH				
HEIGHT	RADII				
LEGEND	COLOR				
COLOR					
SYMBOL(S)	ANGLE	X	Y	WID	HT
SIGN NUMBER	NUMBER OF POSTS	CLEARANCE Edge Of Land	COLUMN SIZE	AVERAGE LENGTH	

NO. OF LIGHT FIXTURES	FIXTURE SPACING	PHOTOMETRIC CURVE	WATT	VOLTAGE

COPY	T	R	U	C	K	S	L										
SPACE																	
COPY	E	N	T	E	R	I	N	G	L								
SPACE																	
COPY	H	I	G	H	W	A	Y	L									
SPACE																	
COPY																	
SPACE																	
COPY																	
SPACE																	
COPY																	
SPACE																	

SIGN NAME	AE	QTY	SIGN NUMBER	STATION(S)	
PANEL	BORDER				
WIDTH	WIDTH				
HEIGHT	RADII				
LEGEND	COLOR				
COLOR					
SYMBOL(S)	ANGLE	X	Y	WID	HT
SIGN NUMBER	NUMBER OF POSTS	CLEARANCE Edge Of Land	COLUMN SIZE	AVERAGE LENGTH	

NO. OF LIGHT FIXTURES	FIXTURE SPACING	PHOTOMETRIC CURVE	WATT	VOLTAGE

COPY	T	R	U	C	K	S	L										
SPACE																	
COPY	E	N	T	E	R	I	N	G	L								
SPACE																	
COPY	H	I	G	H	W	A	Y	L									
SPACE																	
COPY																	
SPACE																	
COPY																	
SPACE																	
COPY																	
SPACE																	

REVISIONS			
DATE	DESCRIPTION	DATE	DESCRIPTION

FALLER, DAVIS & ASSOCIATES, INC.
4200 W. CYPRESS ST., SUITE 500
TAMPA, FLORIDA 33607-4168
PATRICIA T. CHRISTIE, P.E. NO.: 60049

STATE OF FLORIDA DEPARTMENT OF TRANSPORTATION		
ROAD NO.	COUNTY	FINANCIAL PROJECT ID
SR 93	COLLIER	444008-4-52-01

<p><i>GUIDE SIGN WORKSHEET</i></p>		<p>SHEET NO.</p> <p align="center">IT-23</p>
------------------------------------	--	--

THE OFFICIAL RECORD OF THIS SHEET IS THE ELECTRONIC FILE DIGITALLY SIGNED AND SEALED UNDER RULE 61G15-23.004, F.A.C.