

CONTRACT PLANS COMPONENTS

ROADWAY
SIGNING AND PAVEMENT MARKING
INTELLIGENT TRANSPORTATION SYSTEMS
STRUCTURES

STATE OF FLORIDA
DEPARTMENT OF TRANSPORTATION
INTELLIGENT TRANSPORTATION
SYSTEMS (ITS) PLANS

FINANCIAL PROJECT ID 444008-4-52-01

COLLIER COUNTY (03175)
STATE ROAD NO. 93 (INTERSTATE 75)

INDEX OF INTELLIGENT TRANSPORTATION SYSTEMS (ITS) PLANS

SHEET NO.	SHEET DESCRIPTION
IT-1	KEY SHEET
IT-1A	NOTES TO REVIEWER
IT-2	SIGNATURE SHEET
IT-3 - IT-4	TABULATION OF QUANTITIES
IT-5	GENERAL NOTES
IT-6 - IT-21	INTELLIGENT TRANSPORTATION SYSTEMS PLANS
IT-22	SPLICE DIAGRAM
IT-23	GUIDE SIGN WORKSHEET

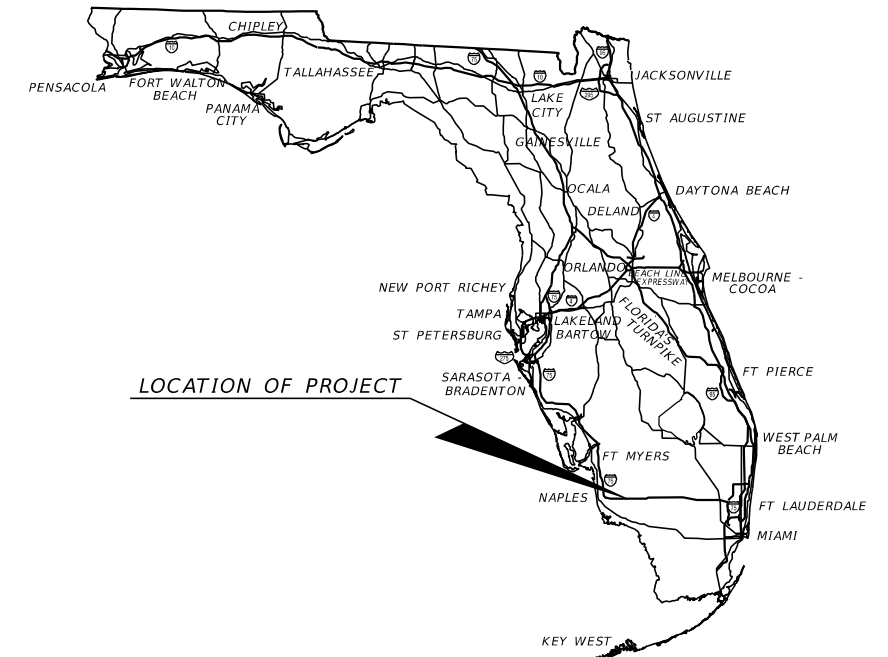
PROJECT LOCATION URL: <http://tinyurl.com/y76ppjyp>

PROJECT LIMITS: BEGIN MP 33.989 - END MP 46.000

EXCEPTIONS: NONE

BRIDGE LIMITS: SEE THE BRIDGE DATA TABLES ON TYPICAL SECTION (3)

RAILROAD CROSSING: NONE



GOVERNING STANDARD PLANS:

Florida Department of Transportation, FY 2024-25 Standard Plans for Road and Bridge Construction and applicable Interim Revisions (IRs).

Standard Plans for Road Construction and associated IRs are available at the following website: <http://www.fdot.gov/design/standardplans>

APPLICABLE IRs: NONE

Standard Plans for Bridge Construction are included in the Structures Plans Component

GOVERNING STANDARD SPECIFICATIONS:

Florida Department of Transportation, FY 2024-25 Standard Specifications for Road and Bridge Construction at the following website: <http://www.fdot.gov/programmanagement/Implemented/SpecBooks>

PHASE IV SUBMITTAL
APRIL 16, 2024

INTELLIGENT TRANSPORTATION SYSTEMS (ITS) PLANS
ENGINEER OF RECORD:

PATRICIA T. CHRISTIE, P.E.
P.E. NO.: 60049
FALLER, DAVIS & ASSOCIATES, INC
1150 ASSEMBLY DRIVE
TAMPA, FL 33607-4874
CONTRACT NO.: CA632
VENDOR NO.: F592594956001

FDOT PROJECT MANAGER:

JEFFREY JONES, P.E.

CONSTRUCTION CONTRACT NO.	FISCAL YEAR	SHEET NO.
EIW80	25	IT-1

THE OFFICIAL RECORD OF THIS SHEET IS THE ELECTRONIC FILE DIGITALLY SIGNED AND SEALED UNDER RULE 61G15-23.004, F.A.C.

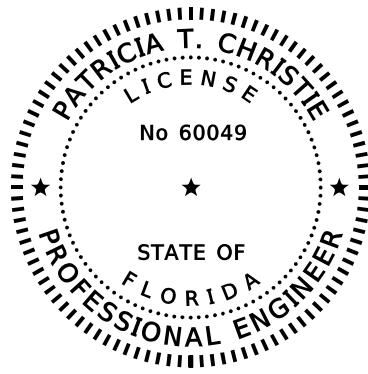
NOTES TO REVIEWERS

=====

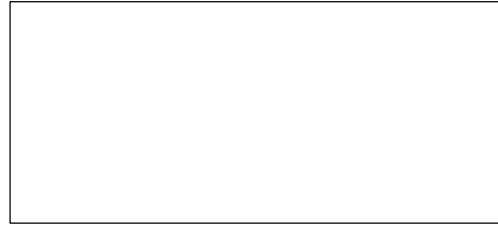
1. THE PROJECT WAS SPLIT INTO THREE SEGMENTS AS FOLLOWS DUE TO FUNDING CONSTRAINTS:

- A. FPID 444008-2-52-01, BROWARD COUNTY LINE (MP 0.063) TO EAST OF BRIDGE NOS. 030243/030244 (MP 25.144)
LETTING FEBRUARY 2022, CONSTRUCTION COMPLETE MAY 2024
- B. FPID 444008-3-52-01, EAST OF BRIDGE NOS. 030243/030244 (MP 25.144) TO WEST OF BRIDGE NOS. 03005/030223 (MP 33.989) AND (MP 46.000) TO TOLL BOOTH (MP 49.282)
LETTING JULY 2022, CONSTRUCTION COMPLETE MAY 2024
- C. FPID 444008-4-52-01, WEST OF BRIDGE NOS. 03005/030223 (MP 33.989) TO (46.000) LETTING SEPTEMBER 2024

REVISIONS				PATRICIA T. CHRISTIE, P.E. P.E. LICENSE NUMBER 60049 FALLER, DAVIS & ASSOCIATES, INC 1150 ASSEMBLY DRIVE, SUITE 400 TAMPA, FLORIDA 33607-4874	STATE OF FLORIDA DEPARTMENT OF TRANSPORTATION			NOTES TO REVIEWER	SHEET NO.
DATE	DESCRIPTION	DATE	DESCRIPTION		ROAD NO.	COUNTY	FINANCIAL PROJECT ID		IT-1A
					SR 93	COLLIER	444008-4-52-01		



THIS ITEM HAS BEEN DIGITALLY
SIGNED AND SEALED BY



ON THE DATE ADJACENT TO THE SEAL

PRINTED COPIES OF THIS DOCUMENT ARE
NOT CONSIDERED SIGNED AND SEALED
AND THE SIGNATURE MUST BE VERIFIED
ON ANY ELECTRONIC COPIES.

FALLER, DAVIS & ASSOCIATES, INC.
1150 ASSEMBLY DRIVE, SUITE 400
TAMPA, FLORIDA 33607-4874
PATRICIA T. CHRISTIE, P.E. NO.: 60049

THE ABOVE NAMED PROFESSIONAL ENGINEER SHALL BE RESPONSIBLE FOR THE
FOLLOWING SHEETS IN ACCORDANCE WITH RULE 61G15-23.004, F.A.C.

INDEX OF INTELLIGENT TRANSPORTATION SYSTEMS (ITS) PLANS

IT-1	KEY SHEET
IT-2	SIGNATURE SHEET
IT-3 - IT-4	TABULATION OF QUANTITIES
IT-5	GENERAL NOTES
IT-6 - IT-21	INTELLIGENT TRANSPORTATION SYSTEMS PLANS
IT-22	SPLICE DIAGRAM
IT-23	GUIDE SIGN WORKSHEET

REVISIONS				PATRICIA T. CHRISTIE, P.E. P.E. LICENSE NUMBER 60049 FALLER, DAVIS & ASSOCIATES, INC 1150 ASSEMBLY DRIVE, SUITE 400 TAMPA, FLORIDA 33607-4874	STATE OF FLORIDA DEPARTMENT OF TRANSPORTATION			SIGNATURE SHEET	SHEET NO.
DATE	DESCRIPTION	DATE	DESCRIPTION		ROAD NO.	COUNTY	FINANCIAL PROJECT ID		IT-2
					SR 93	COLLIER	444008-4-52-01		

TABULATION OF QUANTITIES

PAY ITEM NO.	DESCRIPTION	UNIT	SHEET NUMBERS																		TOTAL THIS SHEET	
			IT-6		IT-7		IT-8		IT-9		IT-10		IT-11		IT-12		IT-13		IT-14		PLAN	FINAL
			PLAN	FINAL	PLAN	FINAL	PLAN	FINAL	PLAN	FINAL	PLAN	FINAL	PLAN	FINAL	PLAN	FINAL	PLAN	FINAL				
611-1-1	ITSFM SUBSURFACE DOCUMENTATION - PROJECT LENGTH	MI																				
611-2-2	ITSFM LOCATION DOCUMENTATION - ITS SITE	EA																				
630-2-11	CONDUIT (F&I) (OPEN TRENCH)	LF																				
630-2-14	CONDUIT (F&I) (ABOVE GROUND)	LF																				
630-2-15	CONDUIT (F&I) (BRIDGE MOUNT)	LF																				
633-1-121	FIBER OPTIC CABLE (F&I) (UNDERGROUND) (2-12 FIBERS)	LF																				
633-1-124	FIBER OPTIC CABLE (F&I) (UNDERGROUND) (97-144 FIBERS)	LF	2475		5760		5910		5710		6030		6065		5910		5910		5765		49535	
633-2-31	FIBER OPTIC CONNECTION (INSTALL) (SPLICE)	EA	144																		144	
633-2-32	FIBER OPTIC CONNECTION (INSTALL) (TERMINATION)	EA																				
633-3-11	FIBER OPTIC CONNECTION HARDWARE (F&I) (SPLICE ENCLOSURE)	EA	1																		1	
633-3-12	FIBER OPTIC CONNECTION HARDWARE (F&I) (SPLICE TRAY)	EA	1																		1	
633-3-14	FIBER OPTIC CONNECTION HARDWARE (F&I) (BUFFER TUBE FAN OUT KIT)	EA																				
633-3-16	FIBER OPTIC CONNECTION HARDWARE (F&I) (PATCH PANEL - FIELD TERMINATED)	EA																				
633-6	FIBER OPTIC LOCATOR	DA																				
635-2-11	PULL & SPLICE BOX (F&I) (13" X 24" COVER SIZE)	EA																				
635-2-12	PULL & SPLICE BOX (F&I) (24" X 36" COVER SIZE)	EA																				
646-2-130	ALUMINUM POLE (F&I) (30')	EA																				
660-3-11	VEHICLE DETECTION SYSTEM - MICROWAVE (F&I) (CABINET EQUIPMENT)	EA																				
660-3-12	VEHICLE DETECTION SYSTEM - MICROWAVE (F&I) (ABOVE GROUND EQUIPMENT)	EA																				
676-2-500	ITS CABINET (ADJUST/MODIFY)	EA																				
676-3-10	SMALL EQUIPMENT ENCLOSURE (F&I) (LESS THAN 10"W X 13"H X 11"D)	EA																				
684-1-1	MANAGED FIELD ETHERNET SWITCH (F&I)	EA																				
684-1-6	MANAGED FIELD ETHERNET SWITCH (REMOVE-CABINET TO REMAIN))	EA																				
684-5-1	MEDIA CONVERTER (F&I)	EA																				
695-5-1	TRAFFIC MONITORING SITE SOLAR POWER UNIT (F&I)	EA																				
700-142-112	ENHANCED HIGHWAY SIGN ASSEMBLY (SOLAR POWERED) (F&I GROUND MOUNT) (W/ BEACON) (12-20 SF OF STATIC SIGN PANELS)	EA																				

REVISIONS DATE DESCRIPTION DATE DESCRIPTION				PATRICIA T. CHRISTIE, P.E. P.E. LICENSE NUMBER 60049 FALLER, DAVIS & ASSOCIATES, INC 1150 ASSEMBLY DRIVE, SUITE 400 TAMPA, FLORIDA 33607-4874	STATE OF FLORIDA DEPARTMENT OF TRANSPORTATION			TABULATION OF QUANTITIES (1)	SHEET NO. IT-3
ROAD NO.		COUNTY			FINANCIAL PROJECT ID				
SR 93		COLLIER			444008-4-52-01				

THE OFFICIAL RECORD OF THIS SHEET IS THE ELECTRONIC FILE DIGITALLY SIGNED AND SEALED UNDER RULE 61G15-23.004, F.A.C.

TABULATION OF QUANTITIES

PAY ITEM NO.	DESCRIPTION	UNIT	SHEET NUMBERS																TOTAL THIS SHEET		GRAND TOTAL	
			IT-15		IT-16		IT-17		IT-18		IT-19		IT-20		IT-21		PLAN	FINAL	PLAN	FINAL		
			PLAN	FINAL	PLAN	FINAL	PLAN	FINAL	PLAN	FINAL	PLAN	FINAL	PLAN	FINAL	PLAN	FINAL						
611-1-1	ITSFM SUBSURFACE DOCUMENTATION - PROJECT LENGTH	MI																				12.174
611-2-2	ITSFM LOCATION DOCUMENTATION - ITS SITE	EA			1													1				1
630-2-11	CONDUIT (F&I) (OPEN TRENCH)	LF			565		2955											3520				3520
630-2-14	CONDUIT (F&I) (ABOVE GROUND)	LF					10											10				10
630-2-15	CONDUIT (F&I) (BRIDGE MOUNT)	LF					190											190				190
633-1-121	FIBER OPTIC CABLE (F&I) (UNDERGROUND) (2-12 FIBERS)	LF			115		3325											3440				3440
633-1-124	FIBER OPTIC CABLE (F&I) (UNDERGROUND) (97-144 FIBERS)	LF	645		700		4520		5760		5910		5710		2220		25465					75000
633-2-31	FIBER OPTIC CONNECTION (INSTALL) (SPLICE)	EA													144		144					288
633-2-32	FIBER OPTIC CONNECTION (INSTALL) (TERMINATION)	EA			12		12										24					24
633-3-11	FIBER OPTIC CONNECTION HARDWARE (F&I) (SPLICE ENCLOSURE)	EA													1		1					2
633-3-12	FIBER OPTIC CONNECTION HARDWARE (F&I) (SPLICE TRAY)	EA													1		1					2
633-3-14	FIBER OPTIC CONNECTION HARDWARE (F&I) (BUFFER TUBE FAN OUT KIT)	EA			1		1										2					2
633-3-16	FIBER OPTIC CONNECTION HARDWARE (F&I) (PATCH PANEL - FIELD TERMINATED)	EA			1		1										2					2
633-6	FIBER OPTIC LOCATOR	DA																				350
635-2-11	PULL & SPLICE BOX (F&I) (13" X 24" COVER SIZE)	EA			2												2					2
635-2-12	PULL & SPLICE BOX (F&I) (24" X 36" COVER SIZE)	EA			1		5										6					6
646-2-130	ALUMINUM POLE (F&I) (30')	EA			1												1					1
660-3-11	VEHICLE DETECTION SYSTEM - MICROWAVE (F&I) (CABINET EQUIPMENT)	EA			1												1					1
660-3-12	VEHICLE DETECTION SYSTEM - MICROWAVE (F&I) (ABOVE GROUND EQUIPMENT)	EA			1												1					1
676-2-500	ITS CABINET (ADJUST/MODIFY)	EA					1										1					1
676-3-10	SMALL EQUIPMENT ENCLOSURE (F&I) (LESS THAN 10"W X 13"H X 11"D)	EA			2												2					2
684-1-1	MANAGED FIELD ETHERNET SWITCH (F&I)	EA					1										1					1
684-1-6	MANAGED FIELD ETHERNET SWITCH (REMOVE-CABINET TO REMAIN))	EA					1										1					1
684-5-1	MEDIA CONVERTER (F&I)	EA			1		1										2					2
695-5-1	TRAFFIC MONITORING SITE SOLAR POWER UNIT (F&I)	EA			1												1					1
700-142-112	ENHANCED HIGHWAY SIGN ASSEMBLY (SOLAR POWERED) (F&I GROUND MOUNT) (W/ BEACON) (12-20 SF OF STATIC SIGN PANELS)	EA			1												1					1

REVISIONS DATE DESCRIPTION DATE DESCRIPTION				PATRICIA T. CHRISTIE, P.E. P.E. LICENSE NUMBER 60049 FALLER, DAVIS & ASSOCIATES, INC 1150 ASSEMBLY DRIVE, SUITE 400 TAMPA, FLORIDA 33607-4874	STATE OF FLORIDA DEPARTMENT OF TRANSPORTATION			TABULATION OF QUANTITIES (2)	SHEET NO. IT-4
ROAD NO.		COUNTY			FINANCIAL PROJECT ID				
SR 93		COLLIER			444008-4-52-01				

THE OFFICIAL RECORD OF THIS SHEET IS THE ELECTRONIC FILE DIGITALLY SIGNED AND SEALED UNDER RULE 61G15-23.004, F.A.C.

GENERAL NOTES:

1. A COPY OF THE COMPLETED ITSFM DATA SHALL BE SUBMITTED FOR REVIEW AT LEAST 4 WEEKS PRIOR TO FINAL ACCEPTANCE. IT IS THE CONTRACTOR'S RESPONSIBILITY TO OBTAIN ALL TRAINING AND CERTIFICATIONS NECESSARY TO COLLECT AND SUBMIT THE ITSFM DATA. DOCUMENTATION SHOWING THE NECESSARY TRAINING AND CERTIFICATIONS HAVE BEEN OBTAINED AND/OR SCHEDULED SHALL BE SUBMITTED WITHIN 2 WEEKS OF BEGINNING WORK ON THE FMS INFRASTRUCTURE. CONTACT D1- ITSFM@DOT.STATE.FL.US FOR ITSFM INFORMATION.

AT MINIMUM, THE FOLLOWING ITSFM ATTRIBUTE FORMS SHALL BE COMPLETED:

- ITSFM031, ITSFM040
- ITSFM032, ITSFM041
- ITSFM033, ITSFM042
- ITSFM034, ITSFM043
- ITSFM035, ITSFM056
- ITSFM036, ITSFM057
- ITSFM037, ITSFM058
- ITSFM039, ITSFM061

AT MINIMUM, THE FOLLOWING ITSFM FEATURE IMPORT TEMPLATES SHALL BE COMPLETED:

- ITSFM5001
- ITSFM5002
- ITSFM5004
- ITSFM5005
- ITSFM5006
- ITSFM5007
- ITSFM5015

2. AT THE COMPLETION OF THE PROJECT, PROVIDE AS-BUILT PLANS IN ELECTRONIC FORM (PDF) TO:

FDOT TRAFFIC OPERATIONS
 BELINDA THOMAS, TSM&O FMS SPECIALIST IV
 801 N. BROADWAY AVE
 P.O. BOX 1249
 BARTOW, FL 33830-1249
 PHONE: (863) 519-2726
 EMAIL: BELINDA.THOMAS@DOT.STATE.FL.US

3. WEATHERED LIMESTONE/CAPROCK WAS ENCOUNTERED WITHIN SOIL BORINGS. THIS MATERIAL IS ROCK AND IS LOCATED IN SHALLOW DEPTHS. EXCAVATION INTO AND/OR THROUGH LIMESTONE/CAPROCK WILL BE DIFFICULT AND WILL REQUIRE NONCONVENTIONAL CONSTRUCTION TECHNIQUES AND SPECIALIZED EQUIPMENT. LIMESTONE/CAPROCK IS POROUS AND WILL BE DIFFICULT TO DEWATER.

PAY ITEM NOTES:

1. 633-1-121: INCLUDES PRE-TERMINATED ENDS FOR INSTALLATION IN PROPOSED PATCH PANEL AT EACH CABINET LOCATION (WARNING SIGN AND HUB 87.8 NB CABINETS).

2. 633-1-124: FIBER OPTIC CABLE BACKBONE TO BE 144-COUNT SM.

THE 144-COUNT SM FIBER TO BE INSTALLED WITHIN THE SPARE ITS CONDUIT.

REEL TO REEL SPLICES FOR THE NEW CABLE SHALL ONLY OCCUR AT EXISTING SPLICE LOCATIONS. NO NEW SPLICE LOCATIONS SHALL BE INTRODUCED SOLELY FOR REEL TO REEL SPLICES. COST FOR ALL REEL TO REEL SPLICES TO BE INCIDENTAL TO 144 COUNT SM FOC.

ALL FIBER OPTIC CONDUIT INSTALLATION SHALL INCLUDE A COMPLETE FACILITY LOCATE MARKING SYSTEM TO INCLUDE:

- ABOVE GROUND ROUTE MARKERS.
- CURB MOUNTED MARKER TABS.
- ELECTRONIC UTILITY LOCATE SYSTEM.
- INSTALLING WIRING GROUNDING UNITS (WGU) AT EACH SPLICE VAULT.

3. 633-2-31: EACH COLORED BUFFER TO BE SPLICED TO SAME COLORED BUFFER.

4. 660-3-11: INCLUDES AN MVDS CABINET INTERFACE DEVICE CAPABLE OF REMOTE COMMUNICATION AND CONFIGURATION, CONTACT CLOSURES, AND ALL HARDWARE, MATERIALS, AND LABOR REQUIRED FOR MVDS ACTUATION OF WARNING BEACONS AS SHOWN IN THE PLANS.

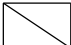


5. 660-3-12: INCLUDES AN MVDS UNIT CAPABLE OF PRESENCE DETECTION.




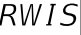
6. 676-2-500: INCLUDES CABINET MODIFICATION FOR THE CONNECTION OF PROPOSED EQUIPMENT, CORE DRILLING THE CABINET BASE TO ROUTE CONDUIT AS NEEDED, AND ALL MATERIALS, HARDWARE, AND LABOR FOR A COMPLETE AND ACCEPTABLE CONNECTION OF THE WWVDS AND ADVANCED WARNING SIGNS.

7. 684-5-1: FOC TO RJ45 MEDIA CONVERTER SHALL INCLUDE AT A MINIMUM TWO (2) ST TYPE FIBER OPTIC CONNECTIONS AND ONE RJ45 CONNECTION.

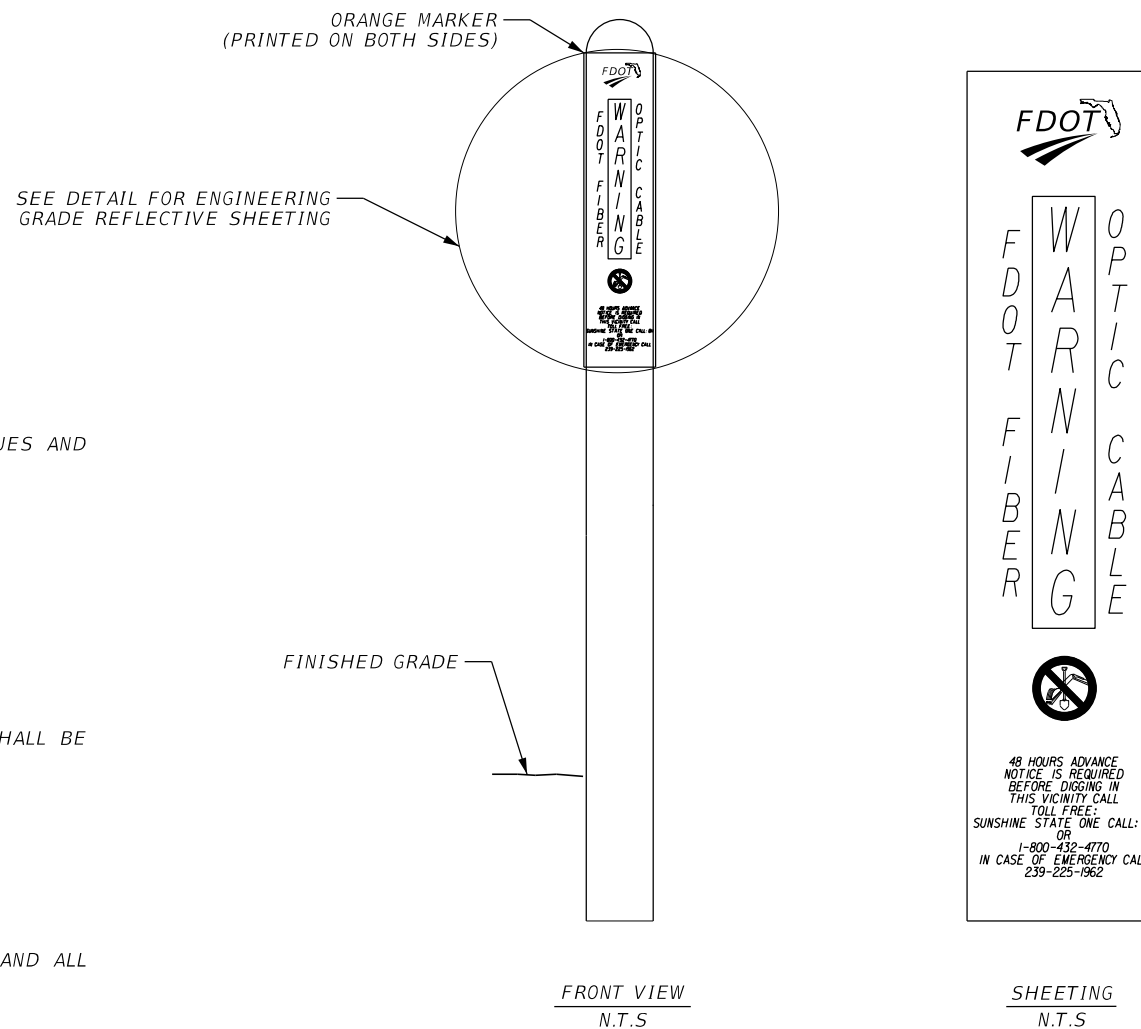
LEGEND:

- = EXISTING CONDUIT WITH 144-COUNT SM INSTALLED IN THE SPARE
- = PROPOSED BRIDGE MOUNT CONDUIT
- = PROPOSED OPEN TRENCH CONDUIT

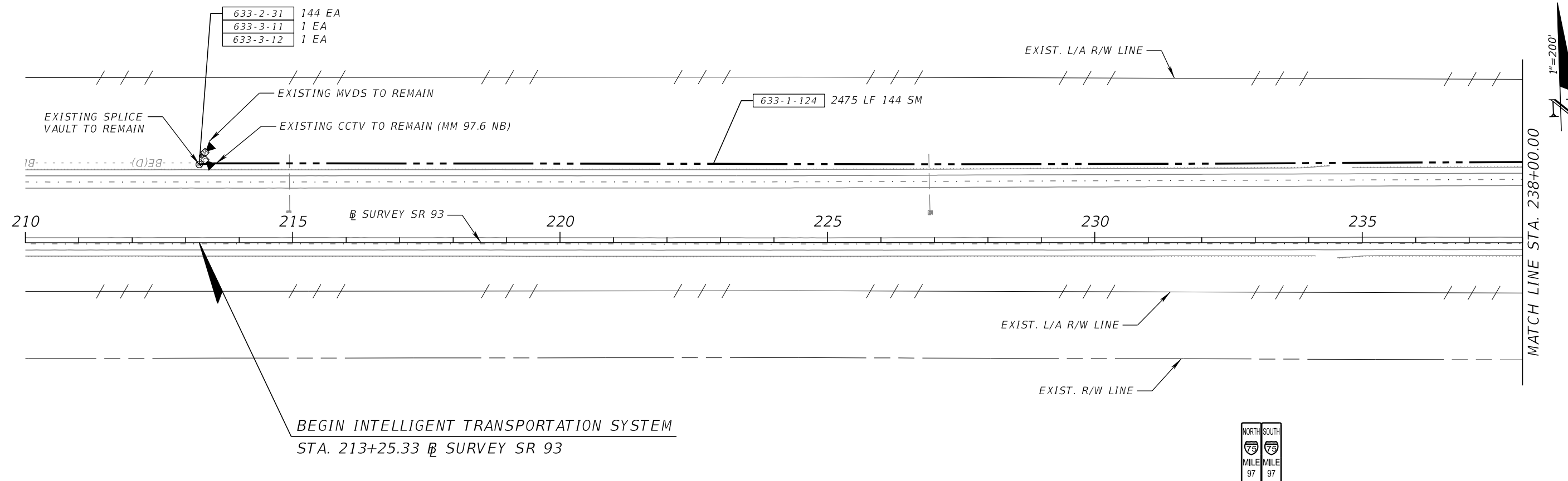
-  = EXISTING FIBER OPTIC PULLBOX
-  = PROPOSED FIBER OPTIC PULLBOX
-  = EXISTING SPLICE VAULT

-  = PROPOSED PULLBOX
-  = MVDS
-  = CCTV
-  = ROAD WEATHER INFORMATION STATION

FIBER OPTIC CABLE ROUTE MARKER



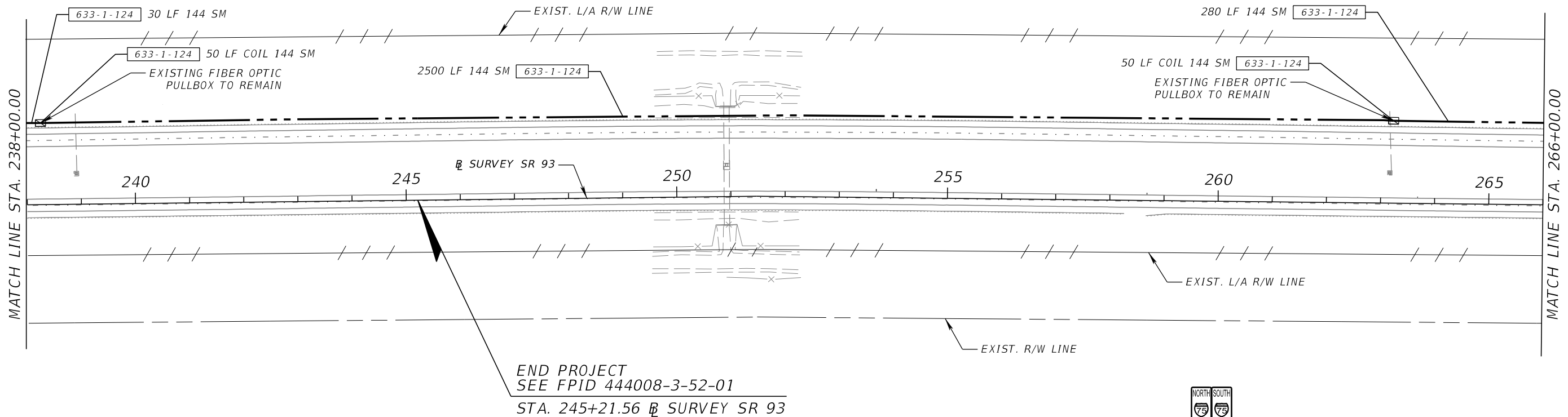
REVISIONS				PATRICIA T. CHRISTIE, P.E. P.E. LICENSE NUMBER 60049 FALLER, DAVIS & ASSOCIATES, INC 1150 ASSEMBLY DRIVE, SUITE 400 TAMPA, FLORIDA 33607-4874	STATE OF FLORIDA DEPARTMENT OF TRANSPORTATION			GENERAL NOTES	SHEET NO.
DATE	DESCRIPTION	DATE	DESCRIPTION		ROAD NO.	COUNTY	FINANCIAL PROJECT ID		
					SR 93	COLLIER	444008-4-52-01		IT-5



THE OFFICIAL RECORD OF THIS SHEET IS THE ELECTRONIC FILE DIGITALLY SIGNED AND SEALED UNDER RULE 61G15-23.004, F.A.C.

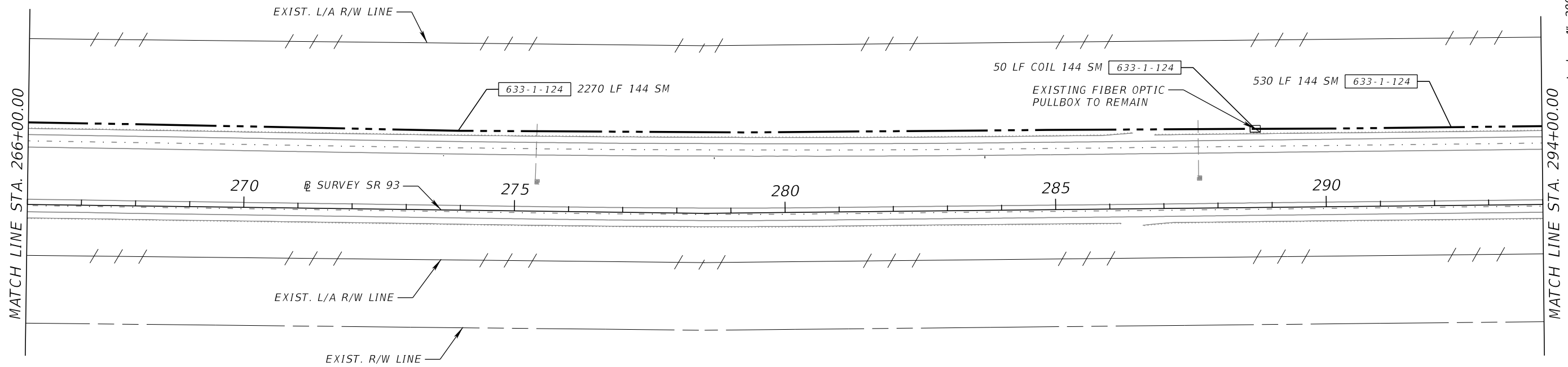
REVISIONS				PATRICIA T. CHRISTIE, P.E. P.E. LICENSE NUMBER 60049 FALLER, DAVIS & ASSOCIATES, INC 1150 ASSEMBLY DRIVE, SUITE 400 TAMPA, FLORIDA 33607-4874	STATE OF FLORIDA DEPARTMENT OF TRANSPORTATION			INTELLIGENT TRANSPORTATION SYSTEMS PLANS (1)	SHEET NO.
DATE	DESCRIPTION	DATE	DESCRIPTION		ROAD NO.	COUNTY	FINANCIAL PROJECT ID		IT-6
					SR 93	COLLIER	444008-4-52-01		

SR 93 (I-75)



NORTH	SOUTH
MILE	MILE
96	96
.5	.5

SR 93 (I-75)



NORTH	SOUTH
MILE	MILE
96	96
.5	.5

REVISIONS			
DATE	DESCRIPTION	DATE	DESCRIPTION

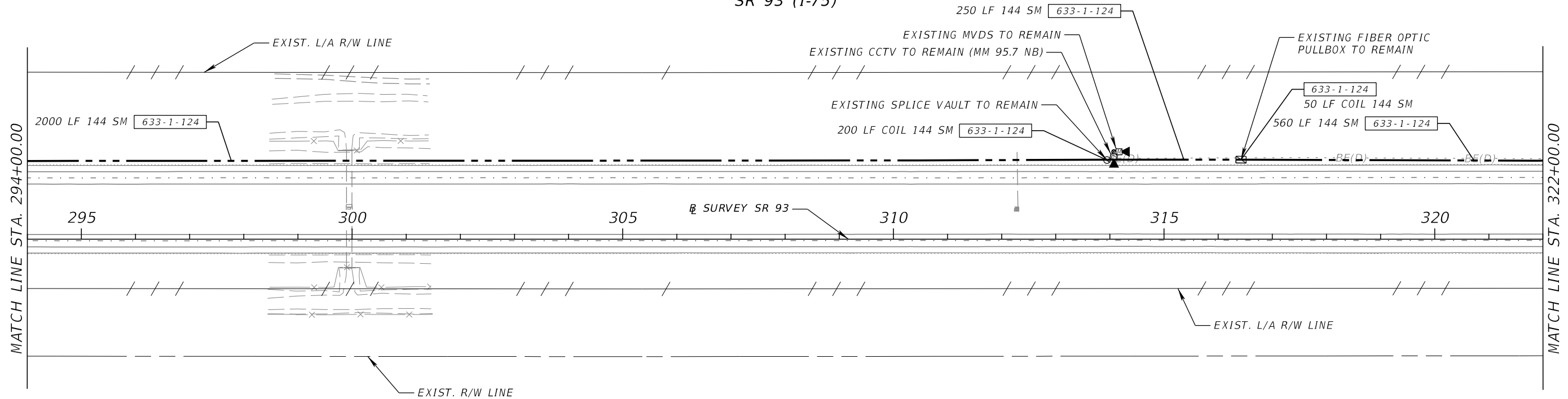
PATRICIA T. CHRISTIE, P.E.
 P.E. LICENSE NUMBER 60049
 FALLER, DAVIS & ASSOCIATES, INC
 1150 ASSEMBLY DRIVE, SUITE 400
 TAMPA, FLORIDA 33607-4874

STATE OF FLORIDA DEPARTMENT OF TRANSPORTATION		
ROAD NO.	COUNTY	FINANCIAL PROJECT ID
SR 93	COLLIER	444008-4-52-01

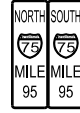
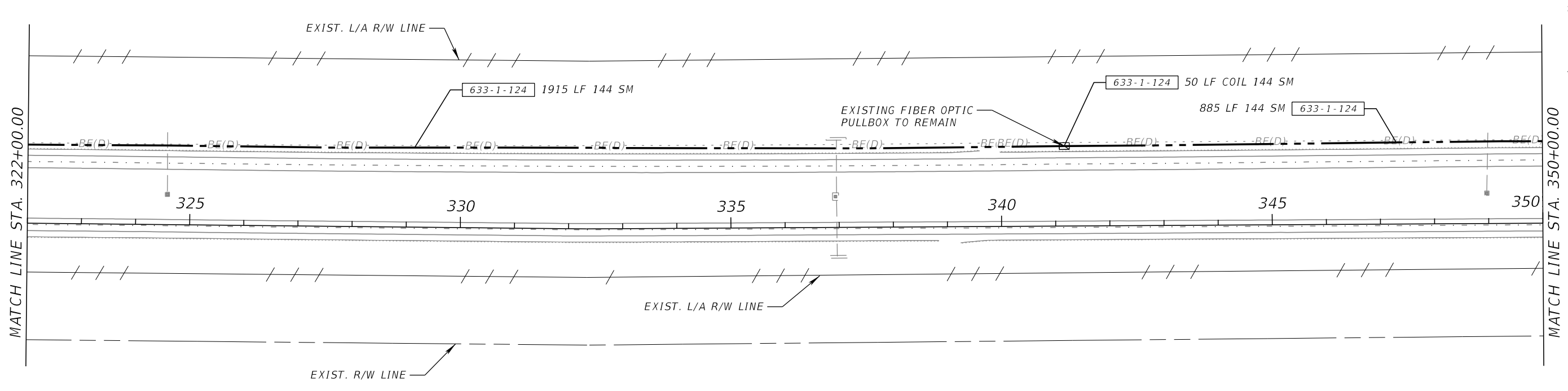
INTELLIGENT TRANSPORTATION
 SYSTEMS PLANS (2)

SHEET NO.
 IT-7

SR 93 (I-75)

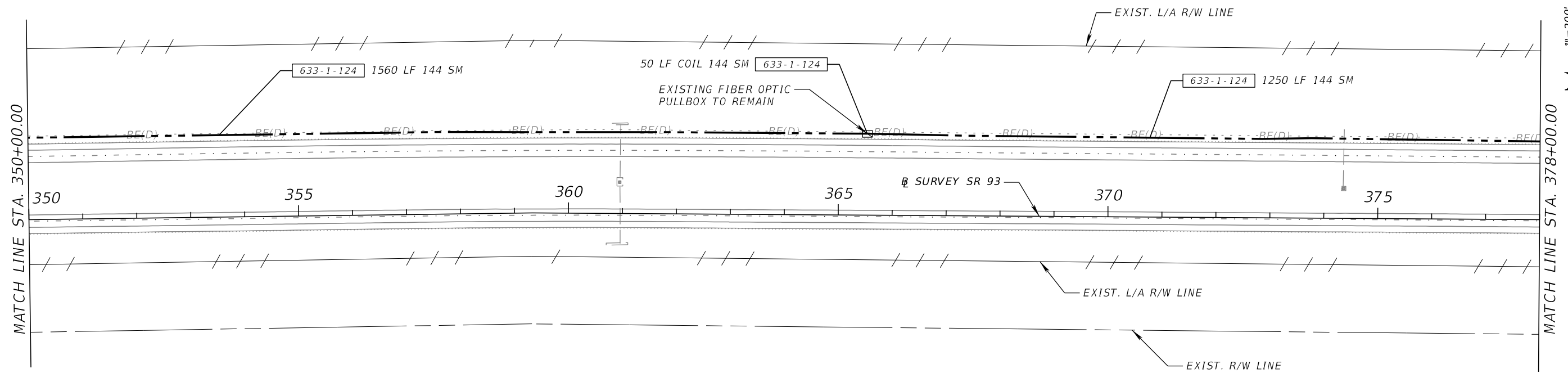


SR 93 (I-75)



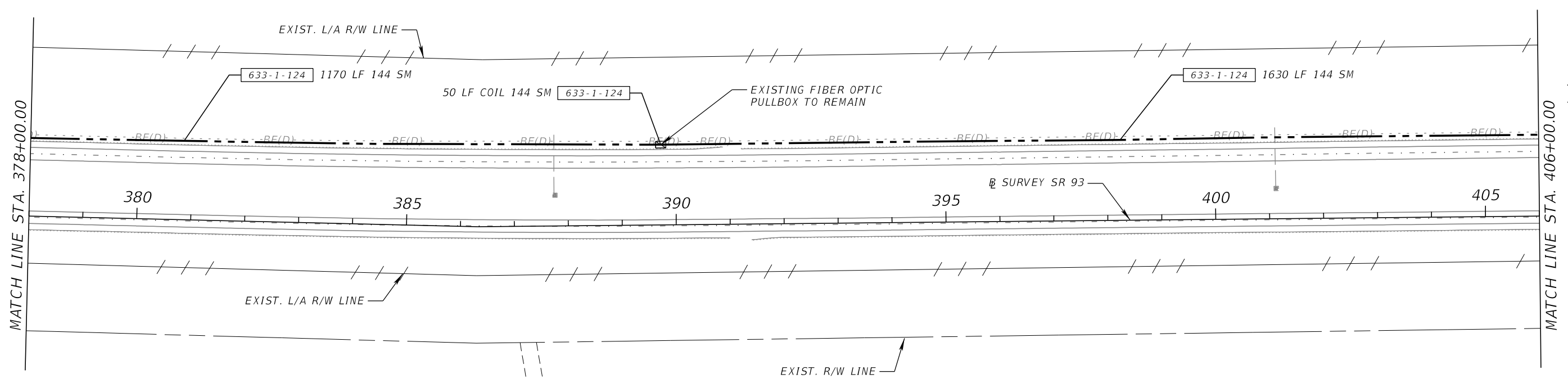
REVISIONS				PATRICIA T. CHRISTIE, P.E. P.E. LICENSE NUMBER 60049 FALLER, DAVIS & ASSOCIATES, INC 1150 ASSEMBLY DRIVE, SUITE 400 TAMPA, FLORIDA 33607-4874	STATE OF FLORIDA DEPARTMENT OF TRANSPORTATION			INTELLIGENT TRANSPORTATION SYSTEMS PLANS (3)	SHEET NO.
DATE	DESCRIPTION	DATE	DESCRIPTION		ROAD NO.	COUNTY	FINANCIAL PROJECT ID		IT-8
					SR 93	COLLIER	444008-4-52-01		

SR 93 (I-75)



NORTH	SOUTH
MILE	MILE
.5	.5

SR 93 (I-75)

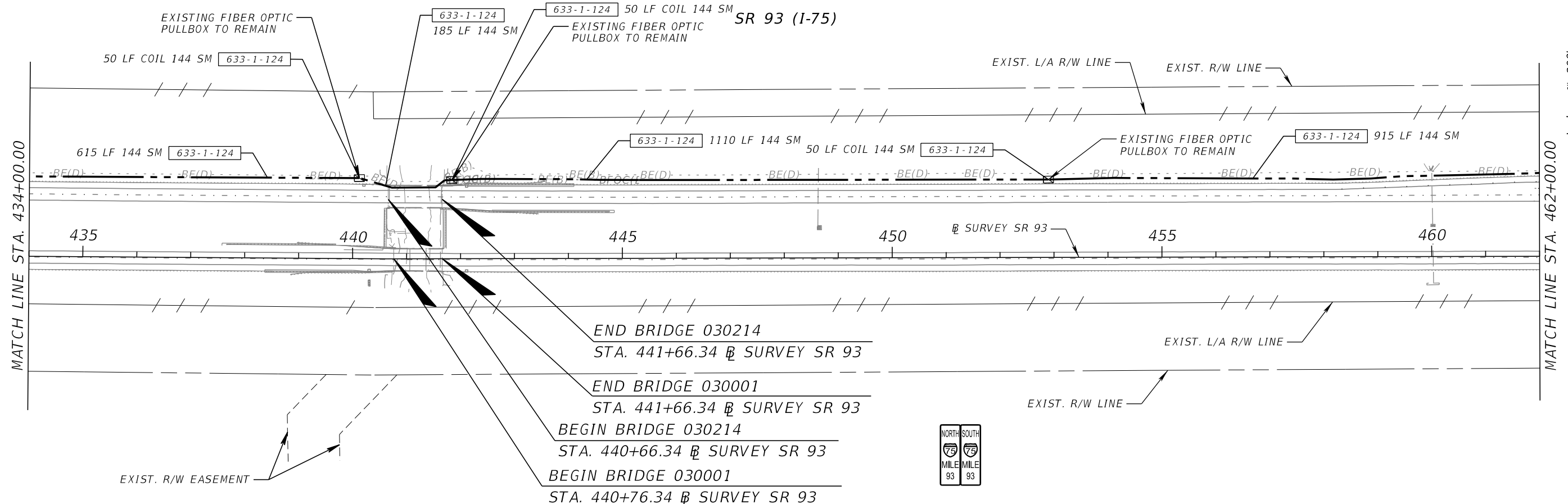
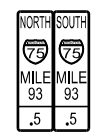
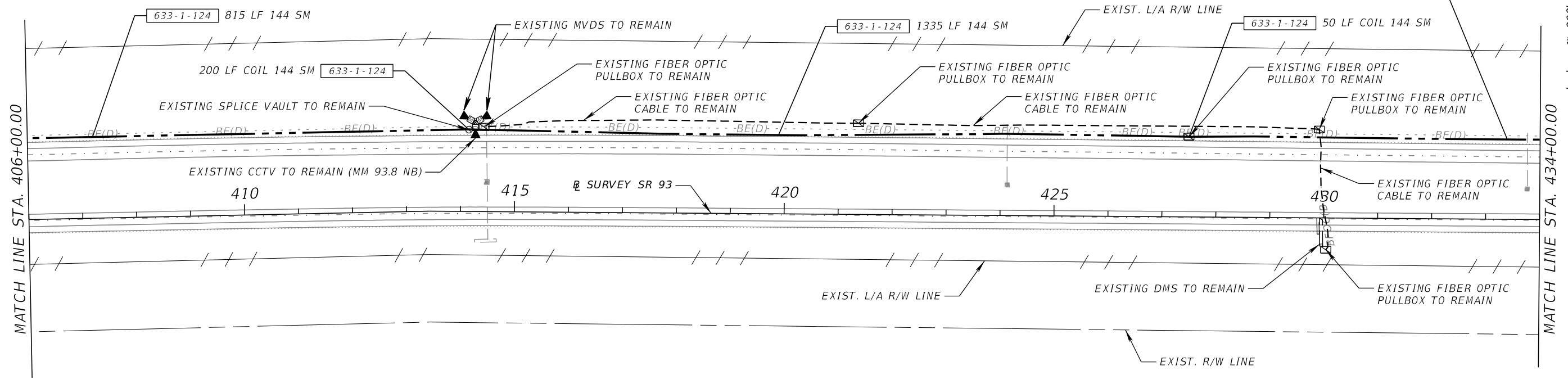


NORTH	SOUTH
MILE	MILE
.5	.5

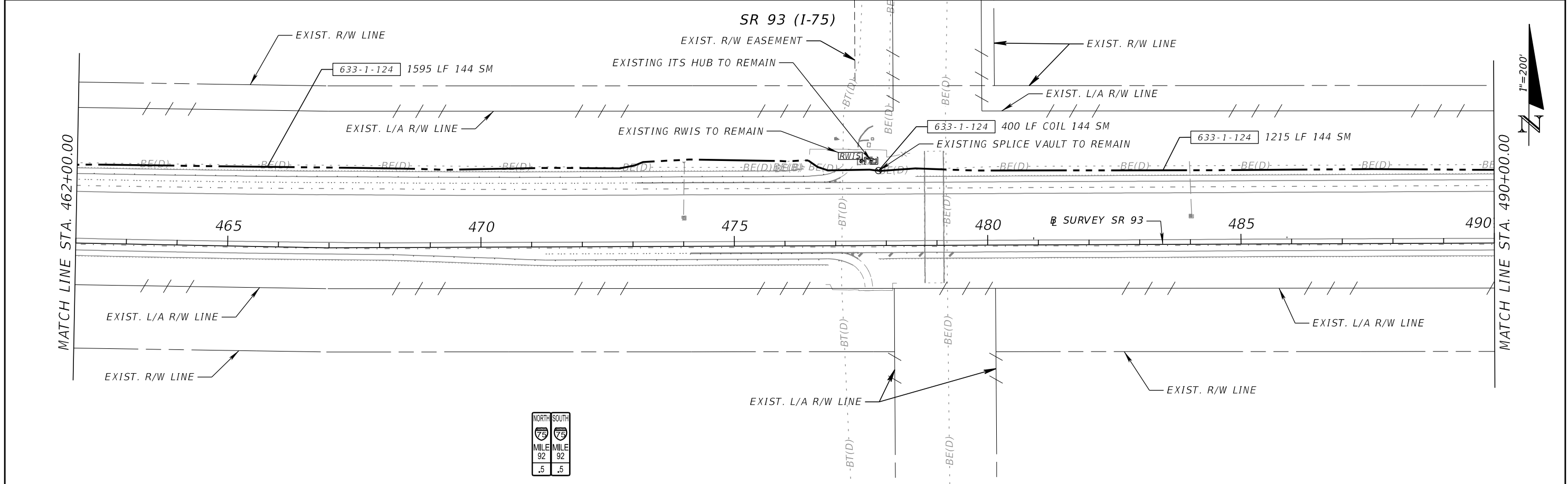
REVISIONS				PATRICIA T. CHRISTIE, P.E. P.E. LICENSE NUMBER 60049 FALLER, DAVIS & ASSOCIATES, INC 1150 ASSEMBLY DRIVE, SUITE 400 TAMPA, FLORIDA 33607-4874	STATE OF FLORIDA DEPARTMENT OF TRANSPORTATION			INTELLIGENT TRANSPORTATION SYSTEMS PLANS (4)	SHEET NO.
DATE	DESCRIPTION	DATE	DESCRIPTION		ROAD NO.	COUNTY	FINANCIAL PROJECT ID		IT-9
					SR 93	COLLIER	444008-4-52-01		

THE OFFICIAL RECORD OF THIS SHEET IS THE ELECTRONIC FILE DIGITALLY SIGNED AND SEALED UNDER RULE 61G15-23.004, F.A.C.

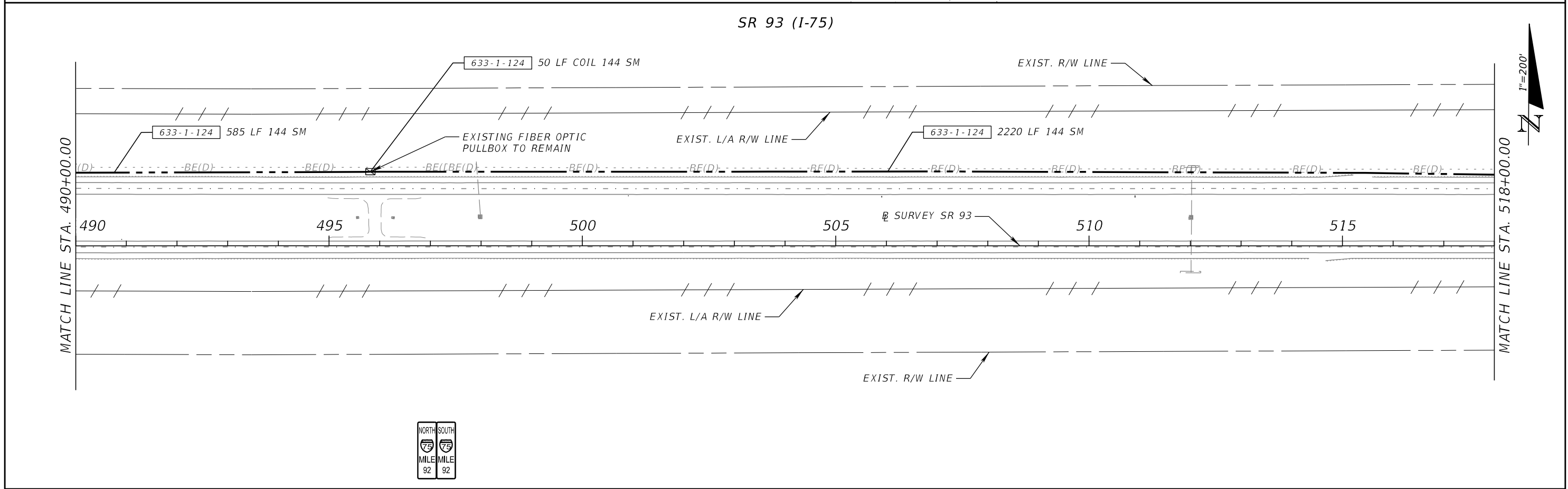
SR 93 (I-75)



REVISIONS				PATRICIA T. CHRISTIE, P.E. P.E. LICENSE NUMBER 60049 FALLER, DAVIS & ASSOCIATES, INC 1150 ASSEMBLY DRIVE, SUITE 400 TAMPA, FLORIDA 33607-4874	STATE OF FLORIDA DEPARTMENT OF TRANSPORTATION			INTELLIGENT TRANSPORTATION SYSTEMS PLANS (5)	SHEET NO.
DATE	DESCRIPTION	DATE	DESCRIPTION		ROAD NO.	COUNTY	FINANCIAL PROJECT ID		IT-10
					SR 93	COLLIER	444008-4-52-01		

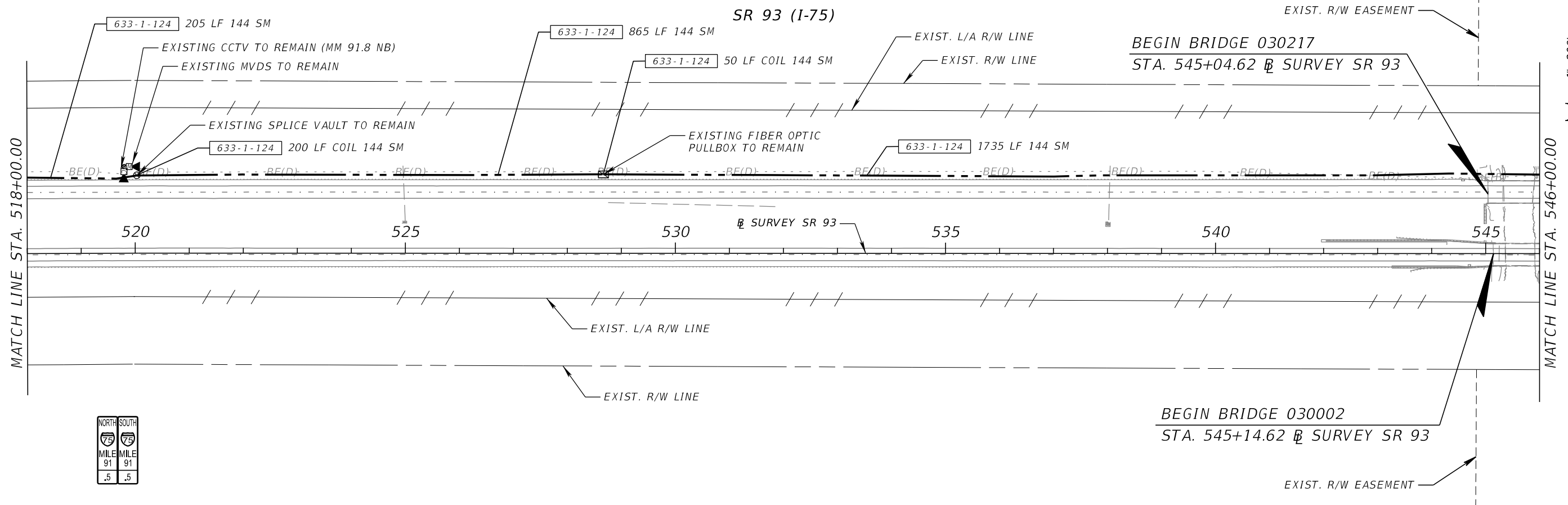


NORTH	SOUTH
MILE	MILE
.92	.92
.5	.5

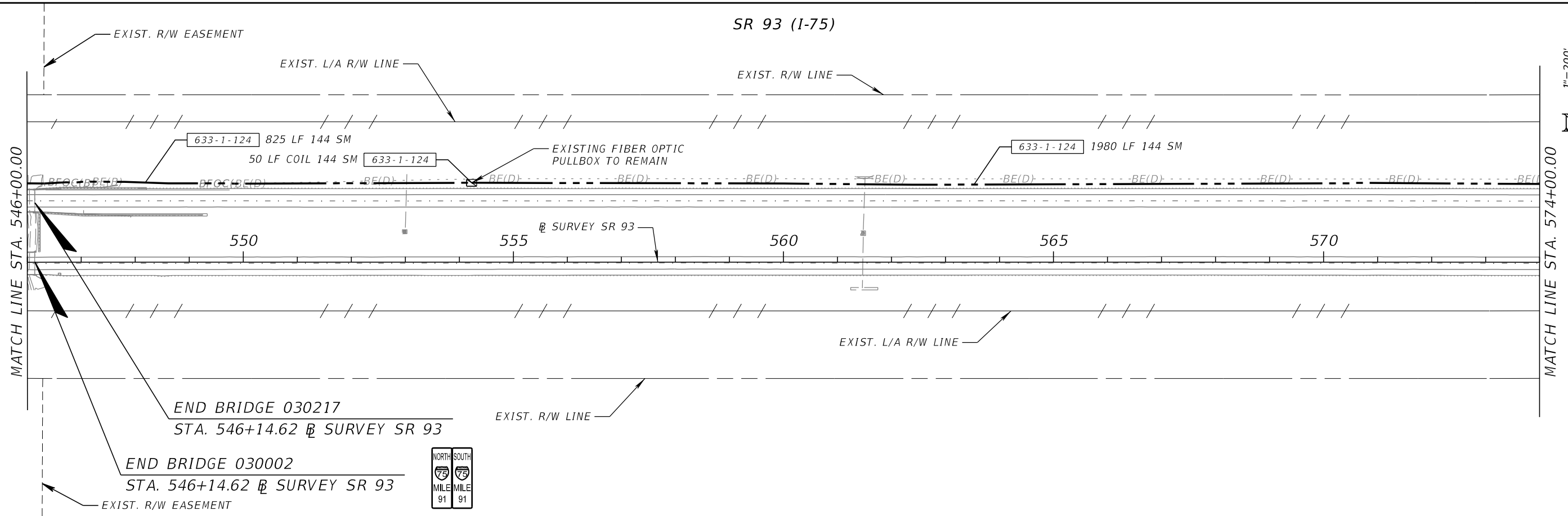


NORTH	SOUTH
MILE	MILE
.92	.92

REVISIONS				PATRICIA T. CHRISTIE, P.E. P.E. LICENSE NUMBER 60049 FALLER, DAVIS & ASSOCIATES, INC 1150 ASSEMBLY DRIVE, SUITE 400 TAMPA, FLORIDA 33607-4874	STATE OF FLORIDA DEPARTMENT OF TRANSPORTATION			INTELLIGENT TRANSPORTATION SYSTEMS PLANS (6)	SHEET NO.
DATE	DESCRIPTION	DATE	DESCRIPTION		ROAD NO.	COUNTY	FINANCIAL PROJECT ID		IT-11
					SR 93	COLLIER	444008-4-52-01		



NORTH	SOUTH
75	75
MILE	MILE
91	91
.5	.5



NORTH	SOUTH
75	75
MILE	MILE
91	91
.5	.5

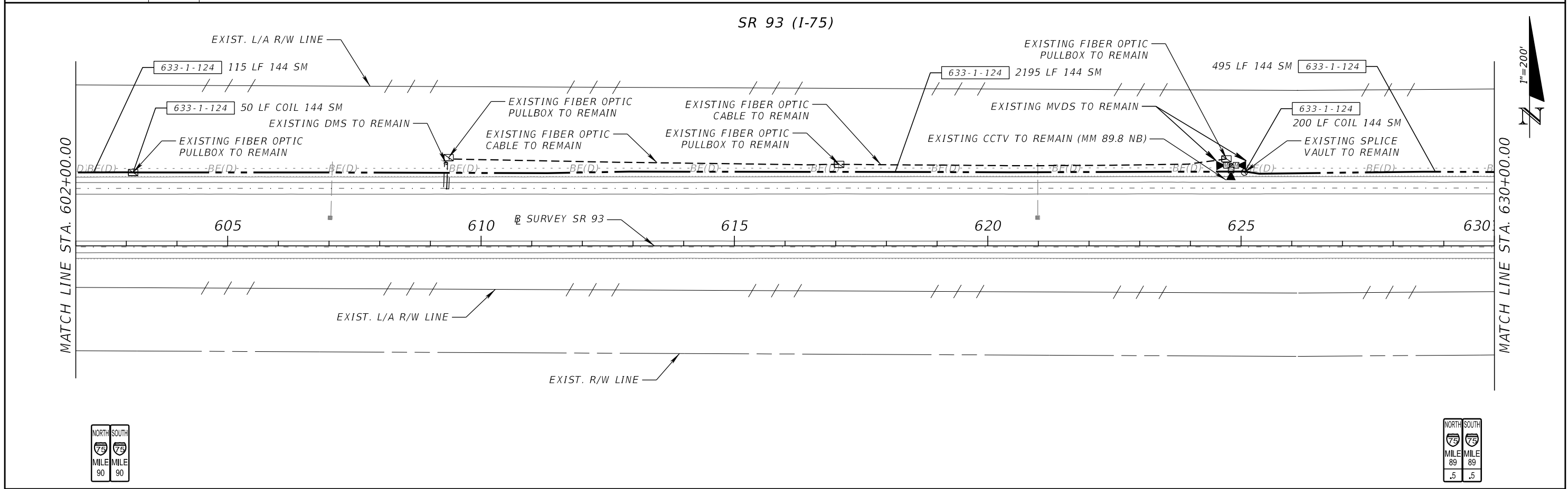
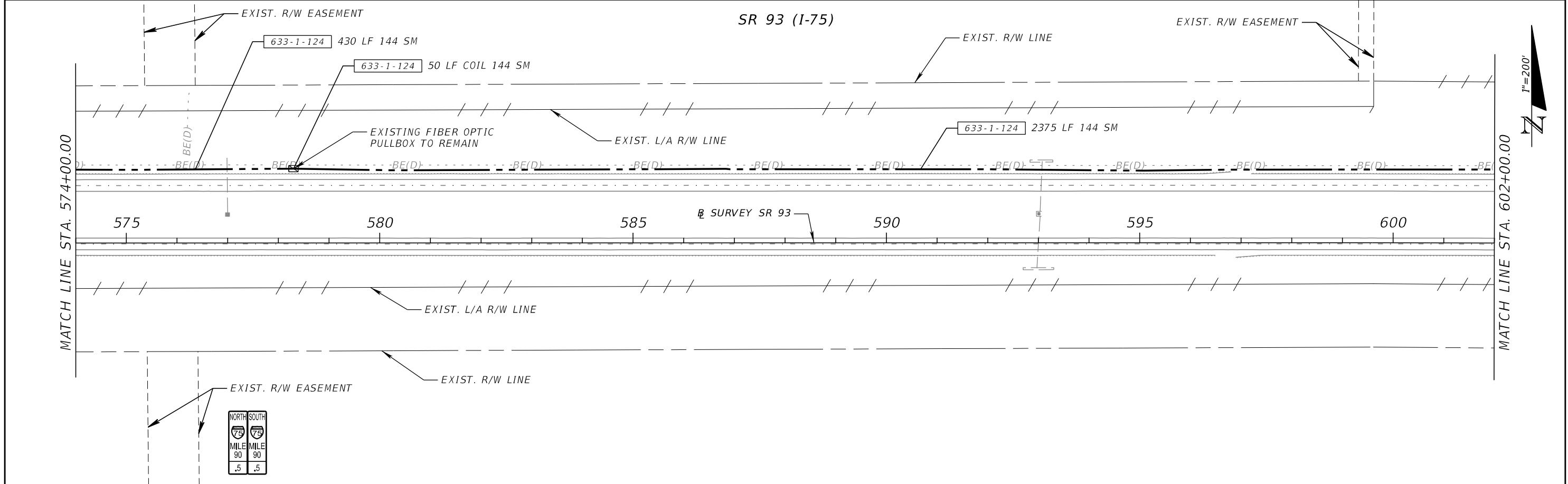
REVISIONS			
DATE	DESCRIPTION	DATE	DESCRIPTION

PATRICIA T. CHRISTIE, P.E.
P.E. LICENSE NUMBER 60049
FALLER, DAVIS & ASSOCIATES, INC
1150 ASSEMBLY DRIVE, SUITE 400
TAMPA, FLORIDA 33607-4874

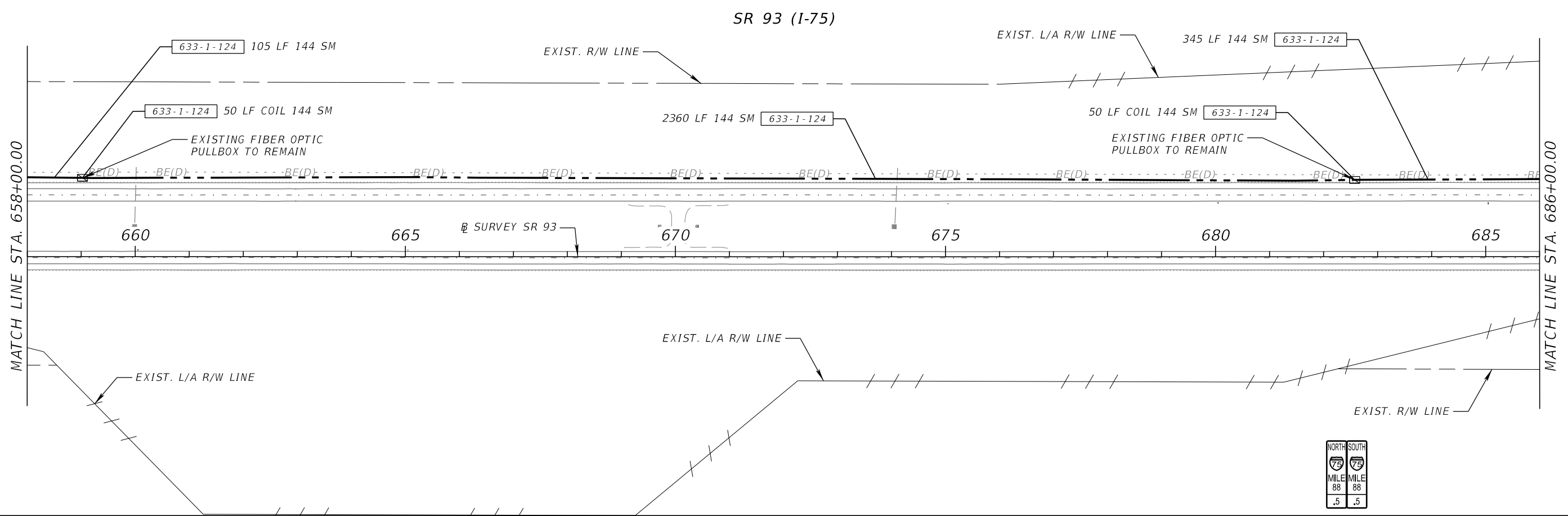
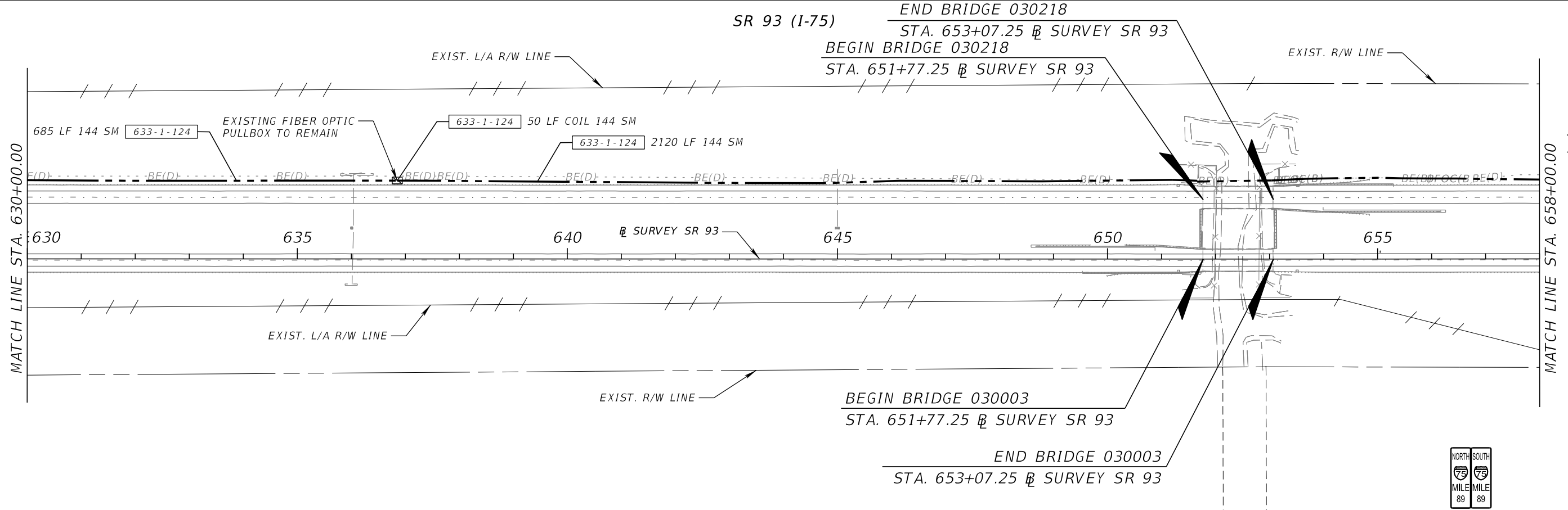
STATE OF FLORIDA DEPARTMENT OF TRANSPORTATION		
ROAD NO.	COUNTY	FINANCIAL PROJECT ID
SR 93	COLLIER	444008-4-52-01

**INTELLIGENT TRANSPORTATION
SYSTEMS PLANS (7)**

SHEET NO.
IT-12



REVISIONS				PATRICIA T. CHRISTIE, P.E. P.E. LICENSE NUMBER 60049 FALLER, DAVIS & ASSOCIATES, INC 1150 ASSEMBLY DRIVE, SUITE 400 TAMPA, FLORIDA 33607-4874	STATE OF FLORIDA DEPARTMENT OF TRANSPORTATION			INTELLIGENT TRANSPORTATION SYSTEMS PLANS (8)	SHEET NO.
DATE	DESCRIPTION	DATE	DESCRIPTION		ROAD NO.	COUNTY	FINANCIAL PROJECT ID		IT-13
					SR 93	COLLIER	444008-4-52-01		



REVISIONS			
DATE	DESCRIPTION	DATE	DESCRIPTION

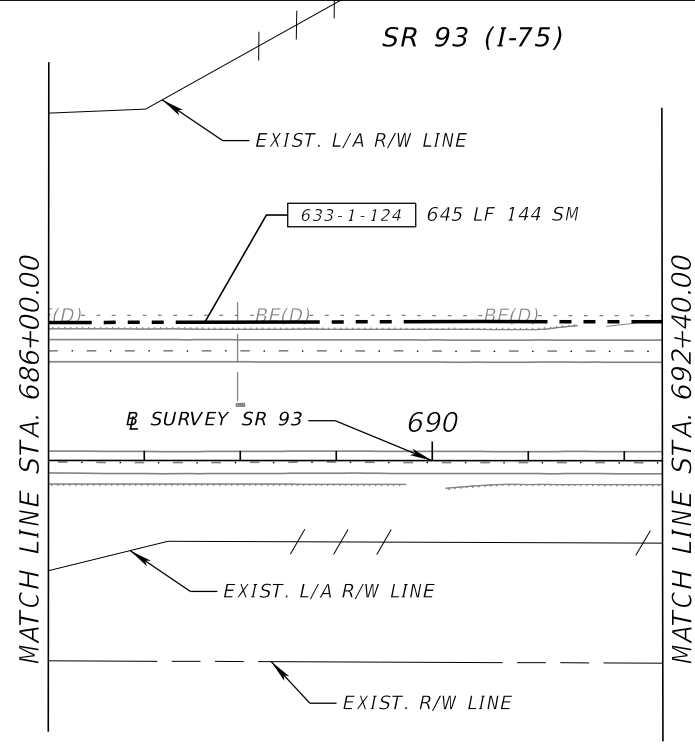
PATRICIA T. CHRISTIE, P.E.
P.E. LICENSE NUMBER 60049
FALLER, DAVIS & ASSOCIATES, INC
1150 ASSEMBLY DRIVE, SUITE 400
TAMPA, FLORIDA 33607-4874

STATE OF FLORIDA DEPARTMENT OF TRANSPORTATION		
ROAD NO.	COUNTY	FINANCIAL PROJECT ID
SR 93	COLLIER	444008-4-52-01

**INTELLIGENT TRANSPORTATION
SYSTEMS PLANS (9)**

SHEET NO.
IT-14

THE OFFICIAL RECORD OF THIS SHEET IS THE ELECTRONIC FILE DIGITALLY SIGNED AND SEALED UNDER RULE 61G15-23.004, F.A.C.



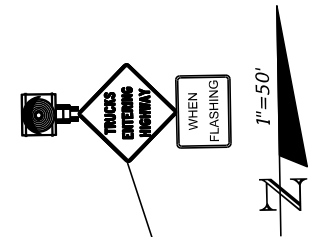
REVISIONS				PATRICIA T. CHRISTIE, P.E. P.E. LICENSE NUMBER 60049 FALLER, DAVIS & ASSOCIATES, INC 1150 ASSEMBLY DRIVE, SUITE 400 TAMPA, FLORIDA 33607-4874	STATE OF FLORIDA DEPARTMENT OF TRANSPORTATION			INTELLIGENT TRANSPORTATION SYSTEMS PLANS (10)	SHEET NO.
DATE	DESCRIPTION	DATE	DESCRIPTION		ROAD NO.	COUNTY	FINANCIAL PROJECT ID		IT-15
					SR 93	COLLIER	444008-4-52-01		

THE OFFICIAL RECORD OF THIS SHEET IS THE ELECTRONIC FILE DIGITALLY SIGNED AND SEALED UNDER RULE 61G15-23.004, F.A.C.

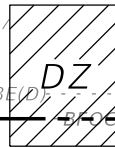
SR 93 (I-75)

NOTE: WHEN A VEHICLE PASSES THE MVDS DETECTION ZONE A FLASHING BEACON WILL BE ACTIVATED AND WILL FLASH FOR 120 SECONDS.

- 15 LF 12 SM 630-2-11
 12 SM 633-1-121
 12 EA 633-2-32
 1 EA 633-3-14
 1 EA 633-3-16
 1 EA 676-3-10
 1 EA 684-5-1
 1 EA 700-142-112
- 15 LF COMPOSITE CABLE FOR MVDS STA. 699+15



- 10 LF 630-2-11
 1 EA 646-2-130
 1 EA 660-3-11
 1 EA 660-3-12
 1 EA 676-3-10
 1 EA 695-5-1
- 10 LF COMPOSITE CABLE FOR MVDS STA. 694+03



- 635-2-11 1 EA

- 633-1-124 700 LF 144 SM

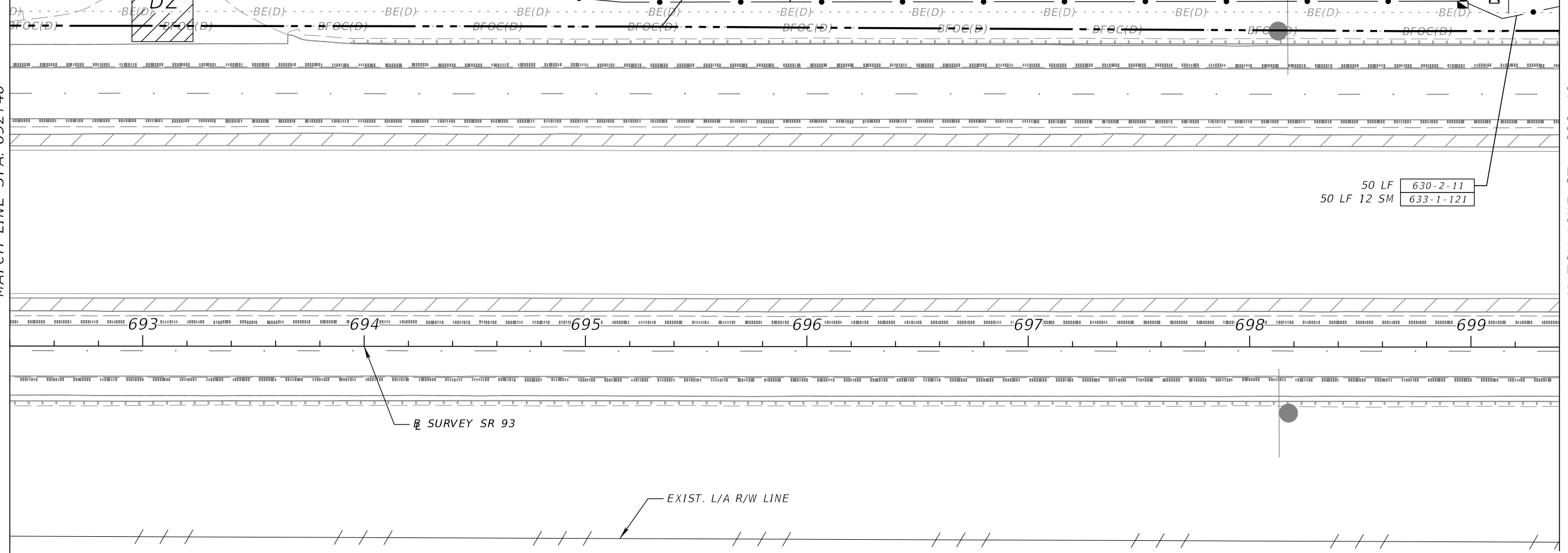
- 630-2-11 490 LF
 490 LF COMPOSITE CABLE FOR MVDS

- 50 LF COIL 12 SM 633-1-121
 1 EA 635-2-11
 1 EA 635-2-12

- 50 LF 630-2-11
 50 LF 12 SM 633-1-121

MATCH LINE STA. 692+40

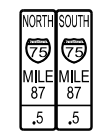
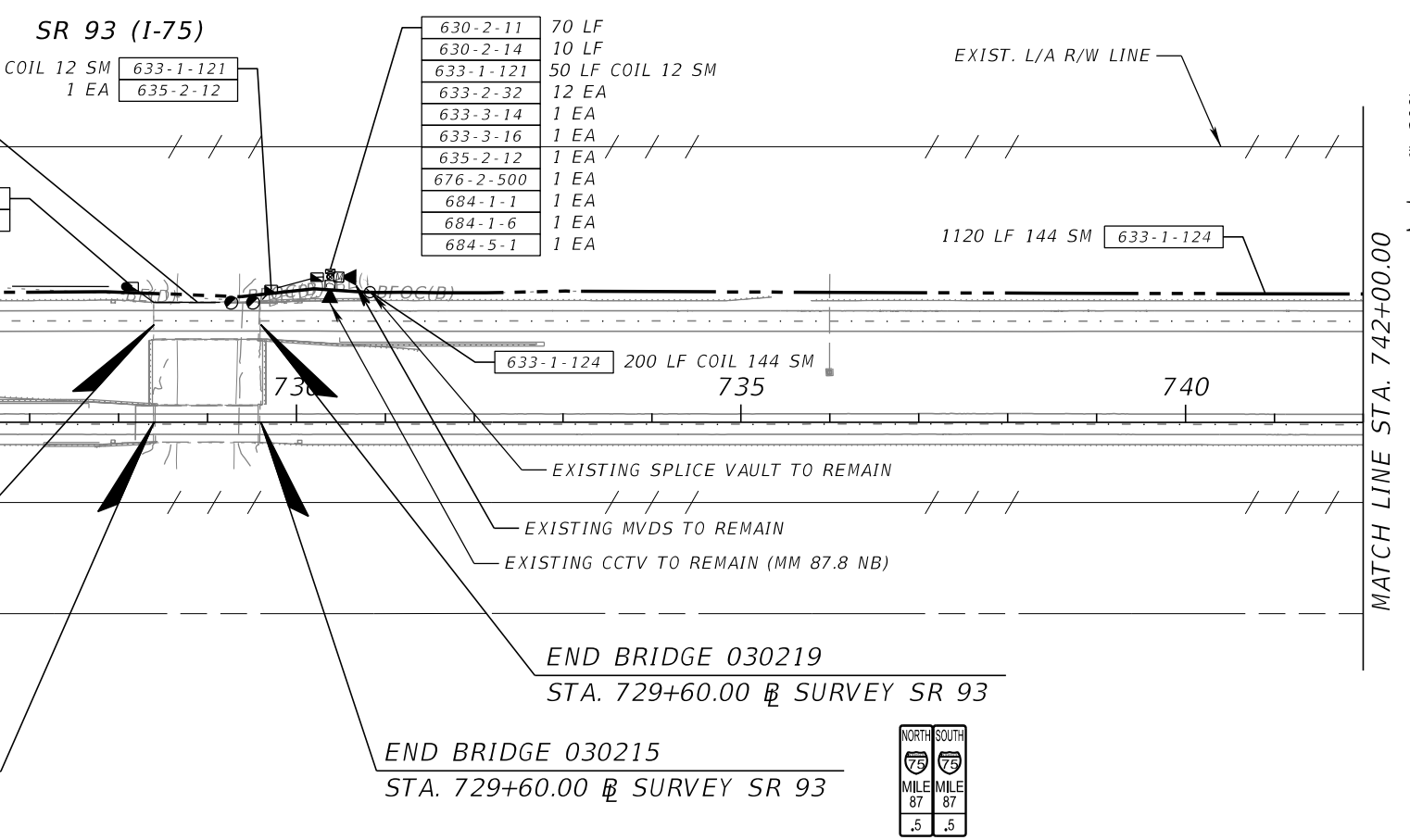
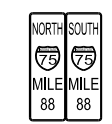
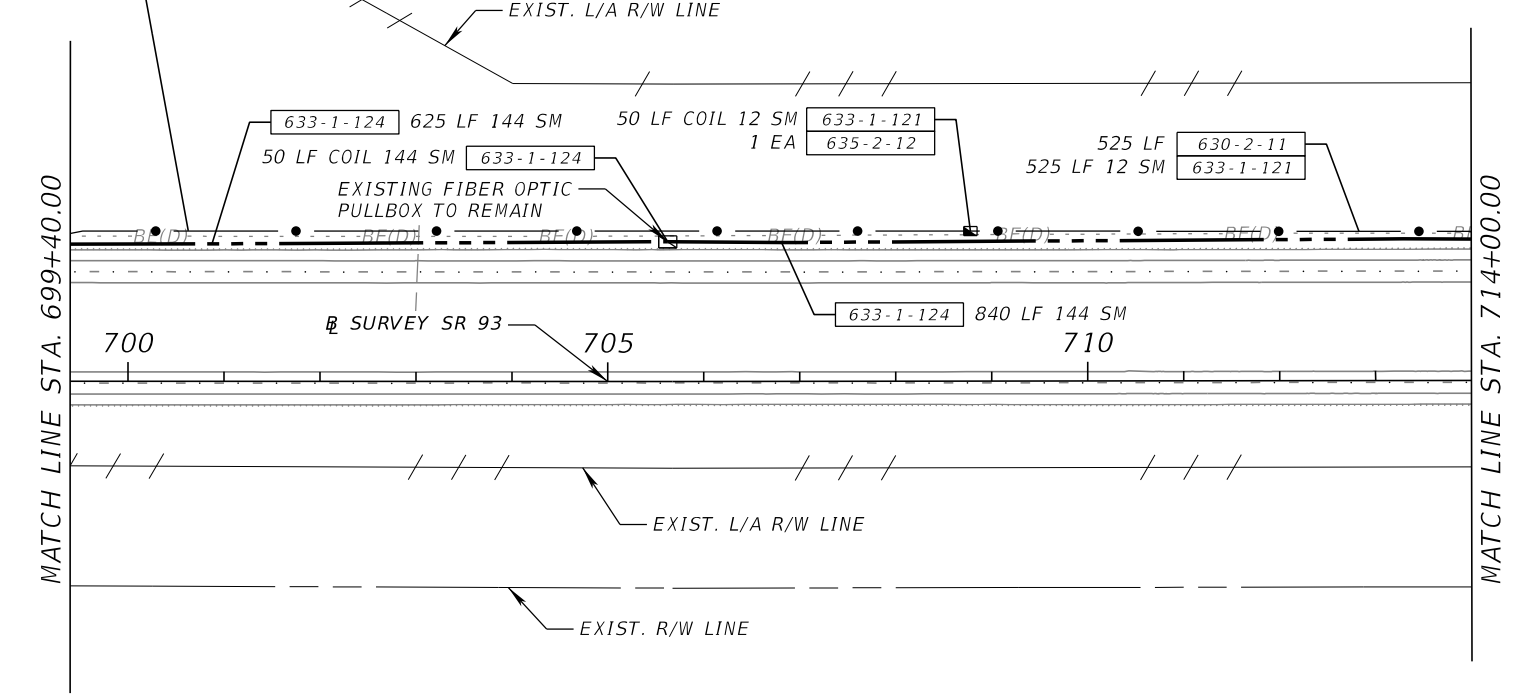
MATCH LINE STA. 699+40



REVISIONS				PATRICIA T. CHRISTIE, P.E. P.E. LICENSE NUMBER 60049 FALLER, DAVIS & ASSOCIATES, INC 1150 ASSEMBLY DRIVE, SUITE 400 TAMPA, FLORIDA 33607-4874	STATE OF FLORIDA DEPARTMENT OF TRANSPORTATION			INTELLIGENT TRANSPORTATION SYSTEMS PLANS (11)	SHEET NO.
DATE	DESCRIPTION	DATE	DESCRIPTION		ROAD NO.	COUNTY	FINANCIAL PROJECT ID		IT-16
					SR 93	COLLIER	444008-4-52-01		

940 LF 630-2-11
940 LF 12 SM 633-1-121

SR 93 (I-75)



REVISIONS			
DATE	DESCRIPTION	DATE	DESCRIPTION

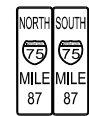
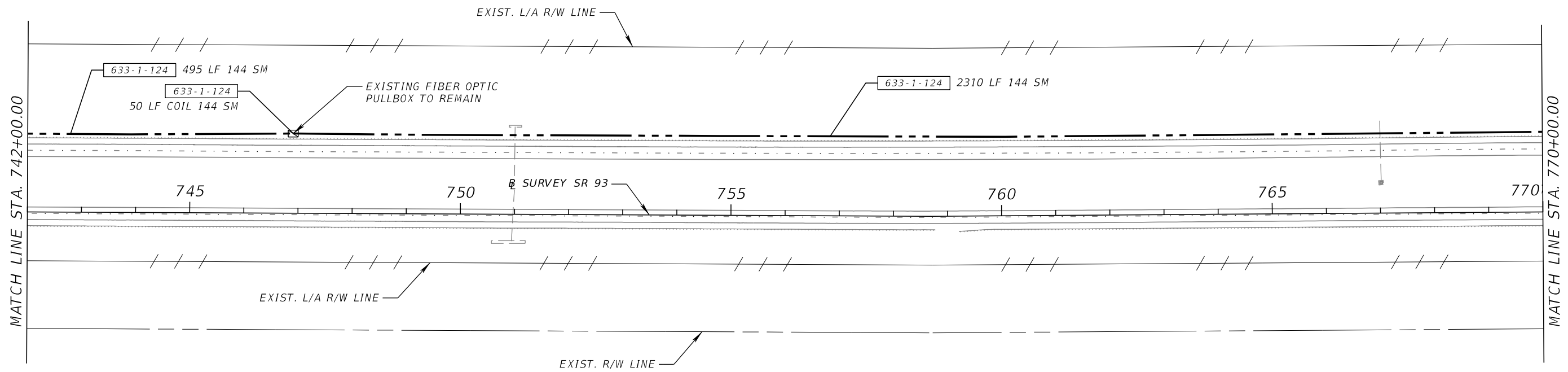
PATRICIA T. CHRISTIE, P.E.
P.E. LICENSE NUMBER 60049
FALLER, DAVIS & ASSOCIATES, INC
1150 ASSEMBLY DRIVE, SUITE 400
TAMPA, FLORIDA 33607-4874

STATE OF FLORIDA DEPARTMENT OF TRANSPORTATION		
ROAD NO.	COUNTY	FINANCIAL PROJECT ID
SR 93	COLLIER	444008-4-52-01

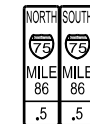
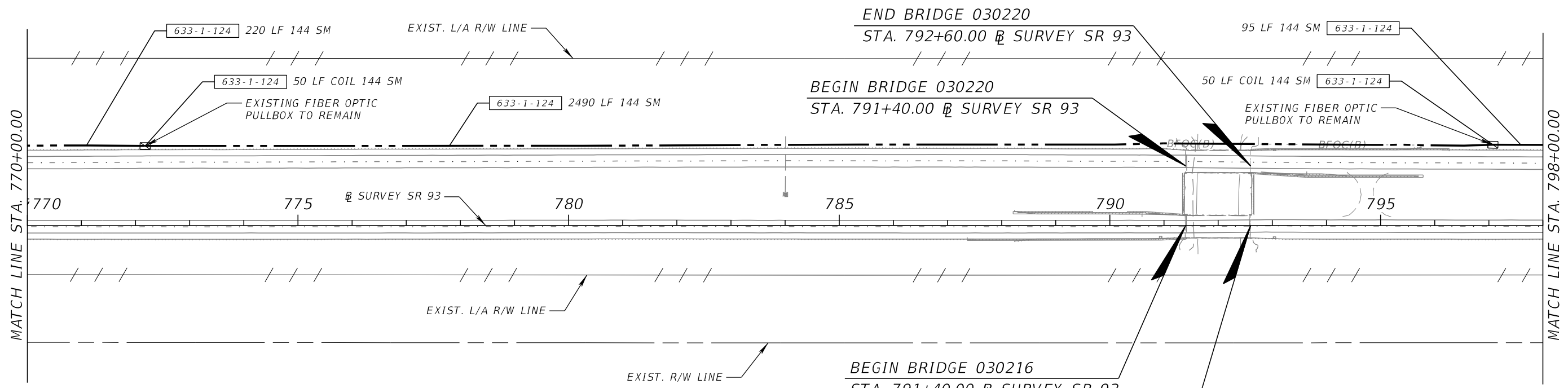
**INTELLIGENT TRANSPORTATION
SYSTEMS PLANS (12)**

SHEET NO.
IT-17

SR 93 (I-75)



SR 93 (I-75)



REVISIONS			
DATE	DESCRIPTION	DATE	DESCRIPTION

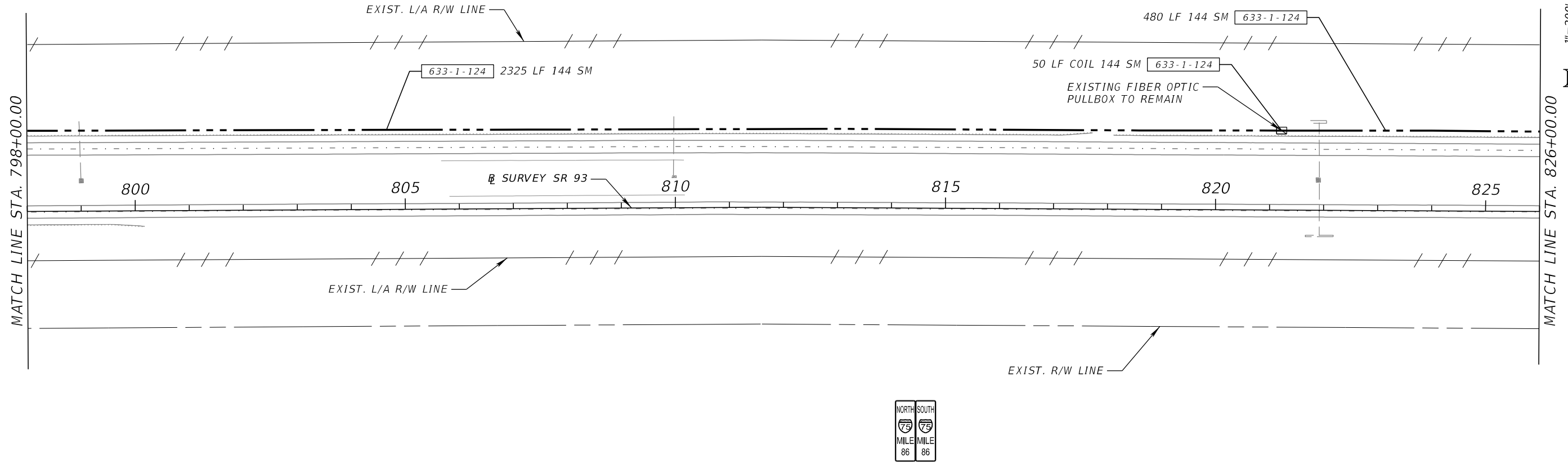
PATRICIA T. CHRISTIE, P.E.
 P.E. LICENSE NUMBER 60049
 FALLER, DAVIS & ASSOCIATES, INC
 1150 ASSEMBLY DRIVE, SUITE 400
 TAMPA, FLORIDA 33607-4874

STATE OF FLORIDA DEPARTMENT OF TRANSPORTATION		
ROAD NO.	COUNTY	FINANCIAL PROJECT ID
SR 93	COLLIER	444008-4-52-01

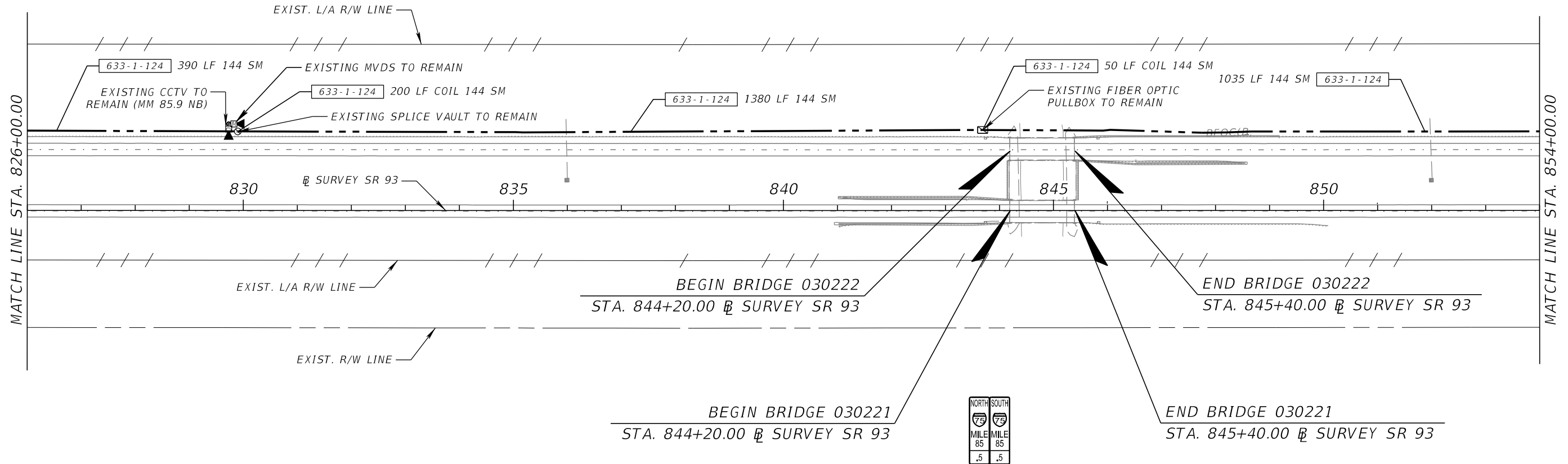
**INTELLIGENT TRANSPORTATION
 SYSTEMS PLANS (13)**

SHEET NO.
 IT-18

SR 93 (I-75)



SR 93 (I-75)



REVISIONS			
DATE	DESCRIPTION	DATE	DESCRIPTION

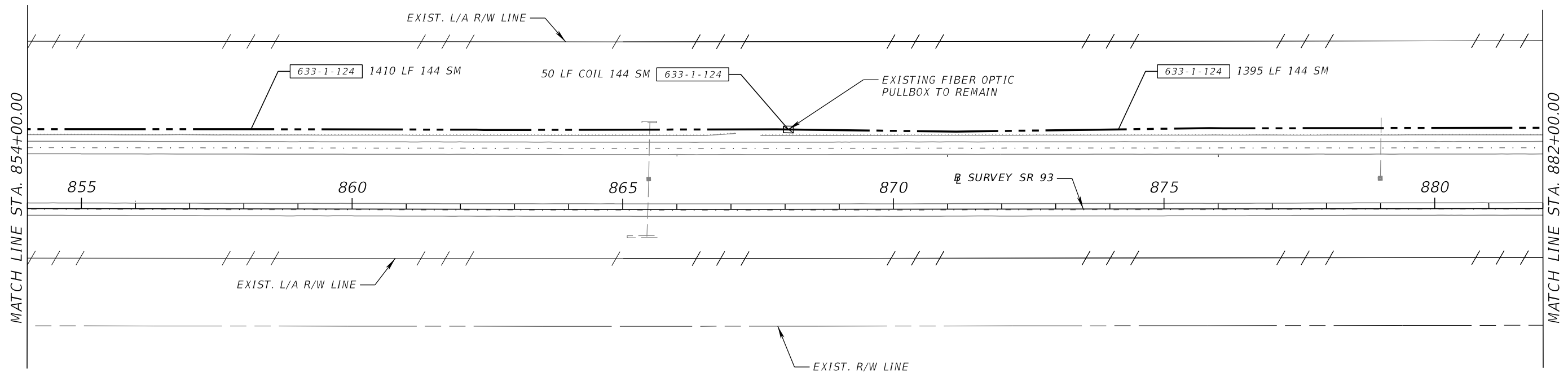
PATRICIA T. CHRISTIE, P.E.
P.E. LICENSE NUMBER 60049
FALLER, DAVIS & ASSOCIATES, INC
1150 ASSEMBLY DRIVE, SUITE 400
TAMPA, FLORIDA 33607-4874

STATE OF FLORIDA DEPARTMENT OF TRANSPORTATION		
ROAD NO.	COUNTY	FINANCIAL PROJECT ID
SR 93	COLLIER	444008-4-52-01

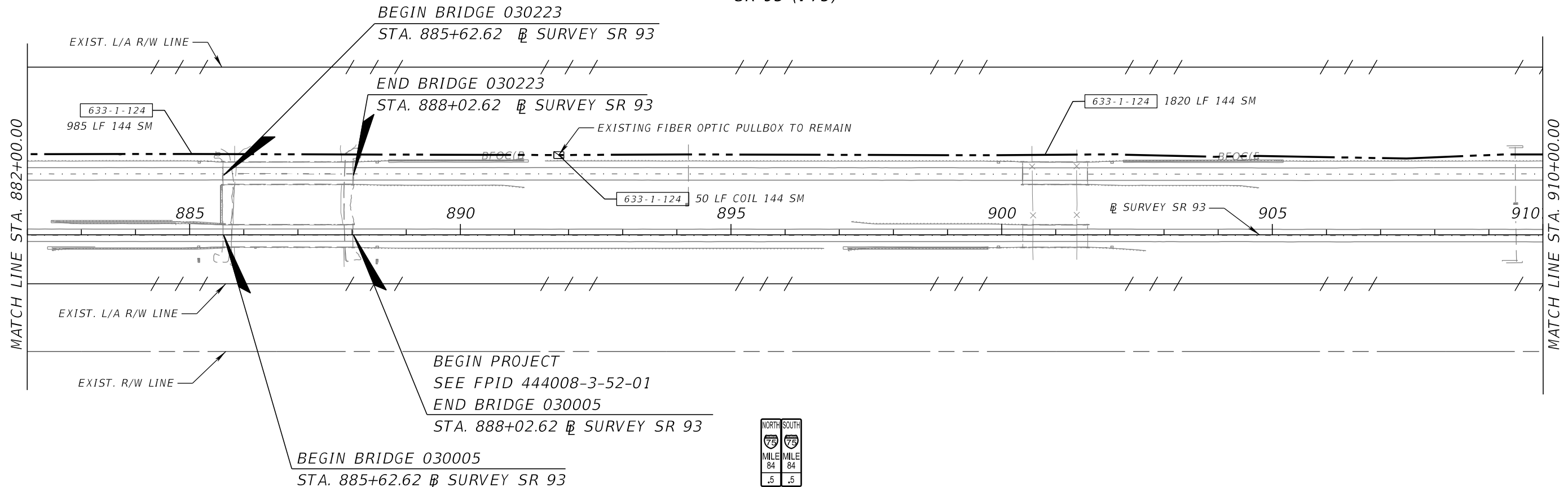
**INTELLIGENT TRANSPORTATION
SYSTEMS PLANS (14)**

SHEET NO.
IT-19

SR 93 (I-75)



SR 93 (I-75)



REVISIONS			
DATE	DESCRIPTION	DATE	DESCRIPTION

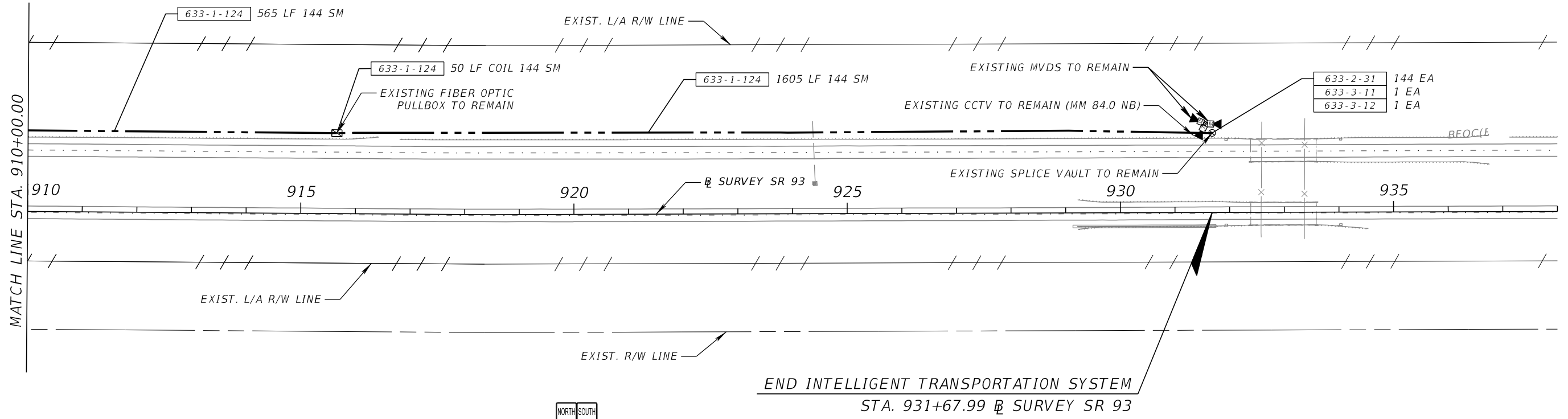
PATRICIA T. CHRISTIE, P.E.
P.E. LICENSE NUMBER 60049
FALLER, DAVIS & ASSOCIATES, INC
1150 ASSEMBLY DRIVE, SUITE 400
TAMPA, FLORIDA 33607-4874

STATE OF FLORIDA DEPARTMENT OF TRANSPORTATION		
ROAD NO.	COUNTY	FINANCIAL PROJECT ID
SR 93	COLLIER	444008-4-52-01

**INTELLIGENT TRANSPORTATION
SYSTEMS PLANS (15)**

SHEET NO.
IT-20

SR 93 (I-75)



MATCH LINE STA. 910+00.00

THE OFFICIAL RECORD OF THIS SHEET IS THE ELECTRONIC FILE DIGITALLY SIGNED AND SEALED UNDER RULE 61G15-23.004, F.A.C.

REVISIONS				PATRICIA T. CHRISTIE, P.E. P.E. LICENSE NUMBER 60049 FALLER, DAVIS & ASSOCIATES, INC 1150 ASSEMBLY DRIVE, SUITE 400 TAMPA, FLORIDA 33607-4874	STATE OF FLORIDA DEPARTMENT OF TRANSPORTATION			INTELLIGENT TRANSPORTATION SYSTEMS PLANS (16)	SHEET NO.
DATE	DESCRIPTION	DATE	DESCRIPTION		ROAD NO.	COUNTY	FINANCIAL PROJECT ID		IT-21
						SR 93	COLLIER		444008-4-52-01

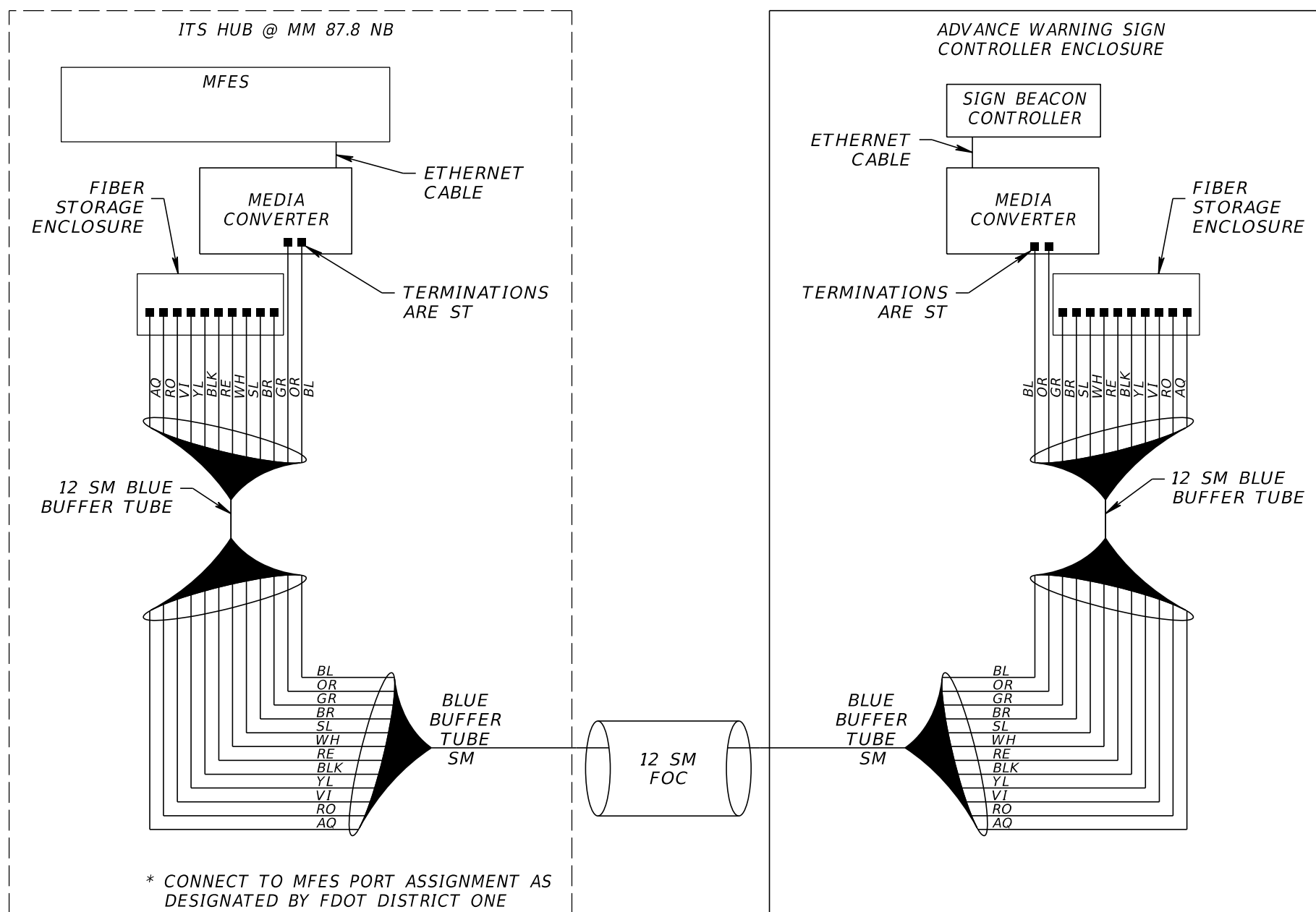
ADVANCE WARNING SIGN TYPICAL SPLICE DIAGRAM

LEGEND

- = FUSION SPLICE
- = EXISTING FUSION SPLICE
- × = NON-CONNECTED FIBER
- = PRE-TERMINATED CONNECTION
- = PROPOSED TERMINATION
- = PROPOSED CABLE/EQUIPMENT
- - = EXISTING CABLE/EQUIPMENT
- MFES = MANAGED FIELD ETHERNET SWITCH
- SM = SINGLE MODE
- MM = MULTIMODE
- ST = STRAIGHT TIP CONNECTOR
- SC = SQUARE CONNECTOR
- LC = LUCENT CONNECTOR
- FOC = FIBER OPTIC CABLE
- TX = TRANSMIT
- RX = RECEIVE
- BL = BLUE
- OR = ORANGE
- GR = GREEN
- BR = BROWN
- SL = SLATE
- WH = WHITE
- RE = RED
- BLK = BLACK
- YL = YELLOW
- VI = VIOLET
- RO = ROSE
- AQ = AQUA

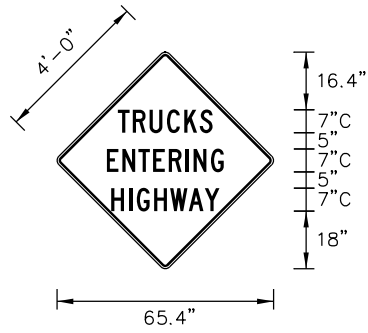
NOTES:

1. ALL EXISTING FIBER OPTIC SPLICES AND TERMINATIONS TO REMAIN UNLESS OTHERWISE SHOWN.
2. ALL EXISTING CONNECTIONS ARE TO REMAIN UNLESS OTHERWISE NOTED.
3. UTILIZE OPTICAL TRANSCEIVERS COMPATIBLE WITH THE PROPOSED MFES.
4. SLACK FOC SHALL NOT BE COILED INSIDE THE CABINET. SLACK FOC SHALL BE COILED AND STORED IN THE SPLICE BOX OR SPLICE VAULT ADJACENT TO THE CABINET.



REVISIONS				PATRICIA T. CHRISTIE, P.E. P.E. LICENSE NUMBER 60049 FALLER, DAVIS & ASSOCIATES, INC 1150 ASSEMBLY DRIVE, SUITE 400 TAMPA, FLORIDA 33607-4874	STATE OF FLORIDA DEPARTMENT OF TRANSPORTATION			SHEET NO. SPLICE DIAGRAM IT-22
DATE	DESCRIPTION	DATE	DESCRIPTION		ROAD NO.	COUNTY	FINANCIAL PROJECT ID	
					SR 93	COLLIER	444008-4-52-01	

SIGN NAME	AE	QTY	SIGN NUMBER	STATION(S)
PANEL	BORDER			699+15 LT
WIDTH	5'-6"	WIDTH	0.75"	
HEIGHT	5'-6"	RADII	3"	
LEGEND	Black	COLOR	Black	
COLOR	Yellow			
SYMBOL(S)	ANGLE	X	Y	WID HT
SIGN NUMBER	NUMBER OF POSTS	CLEARANCE Edge Of Land	COLUMN SIZE	AVERAGE LENGTH



BORDER
R=3"
TH=0.75"
IN=0.50"

NO. OF LIGHT FIXTURES	FIXTURE SPACING	PHOTOMETRIC CURVE	WATT	VOLTAGE

COPY SPACE	18.7	4.6	5.1	5.3	5.3	4.8	3.9	18.7	29										
COPY SPACE	15.2	4.8	4.9	4.5	4.8	5.1	2.5	5.3	3.9	15.2	35.8								
COPY SPACE	16.6	5.5	2.4	5.3	4.9	5.7	4.9	4.5	16.6	33.2									
COPY SPACE																			
COPY SPACE																			
COPY SPACE																			
COPY SPACE																			

SIGN NAME	AE	QTY	SIGN NUMBER	STATION(S)
PANEL	BORDER			
WIDTH		WIDTH		
HEIGHT		RADII		
LEGEND		COLOR		
COLOR				
SYMBOL(S)	ANGLE	X	Y	WID HT
SIGN NUMBER	NUMBER OF POSTS	CLEARANCE Edge Of Land	COLUMN SIZE	AVERAGE LENGTH

NO. OF LIGHT FIXTURES	FIXTURE SPACING	PHOTOMETRIC CURVE	WATT	VOLTAGE

COPY SPACE																			
COPY SPACE																			
COPY SPACE																			
COPY SPACE																			
COPY SPACE																			
COPY SPACE																			
COPY SPACE																			

SIGN NAME	AE	QTY	SIGN NUMBER	STATION(S)
PANEL	BORDER			
WIDTH		WIDTH		
HEIGHT		RADII		
LEGEND		COLOR		
COLOR				
SYMBOL(S)	ANGLE	X	Y	WID HT
SIGN NUMBER	NUMBER OF POSTS	CLEARANCE Edge Of Land	COLUMN SIZE	AVERAGE LENGTH

NO. OF LIGHT FIXTURES	FIXTURE SPACING	PHOTOMETRIC CURVE	WATT	VOLTAGE

COPY SPACE																			
COPY SPACE																			
COPY SPACE																			
COPY SPACE																			
COPY SPACE																			
COPY SPACE																			
COPY SPACE																			

SIGN NAME	AE	QTY	SIGN NUMBER	STATION(S)
PANEL	BORDER			
WIDTH		WIDTH		
HEIGHT		RADII		
LEGEND		COLOR		
COLOR				
SYMBOL(S)	ANGLE	X	Y	WID HT
SIGN NUMBER	NUMBER OF POSTS	CLEARANCE Edge Of Land	COLUMN SIZE	AVERAGE LENGTH

NO. OF LIGHT FIXTURES	FIXTURE SPACING	PHOTOMETRIC CURVE	WATT	VOLTAGE

COPY SPACE																			
COPY SPACE																			
COPY SPACE																			
COPY SPACE																			
COPY SPACE																			
COPY SPACE																			
COPY SPACE																			

DATE		REVISIONS	
DATE	DESCRIPTION	DATE	DESCRIPTION

PATRICIA T. CHRISTIE, P.E.
P.E. LICENSE NUMBER 60049
FALLER, DAVIS & ASSOCIATES, INC
1150 ASSEMBLY DRIVE, SUITE 400
TAMPA, FLORIDA 33607-4874

STATE OF FLORIDA DEPARTMENT OF TRANSPORTATION		
ROAD NO.	COUNTY	FINANCIAL PROJECT ID
SR 93	COLLIER	444008-4-52-01

GUIDE SIGN WORKSHEET

SHEET NO.
IT-23

THE OFFICIAL RECORD OF THIS SHEET IS THE ELECTRONIC FILE DIGITALLY SIGNED AND SEALED UNDER RULE 61G15-23.004, F.A.C.