

MANATEE COUNTY

CONTRACT PLANS

FINANCIAL PROJECT ID 433592-4-58-01

(FEDERAL FUNDS)

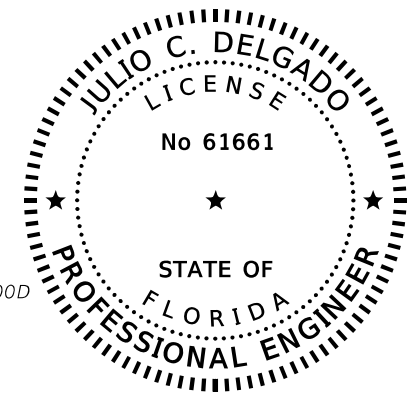
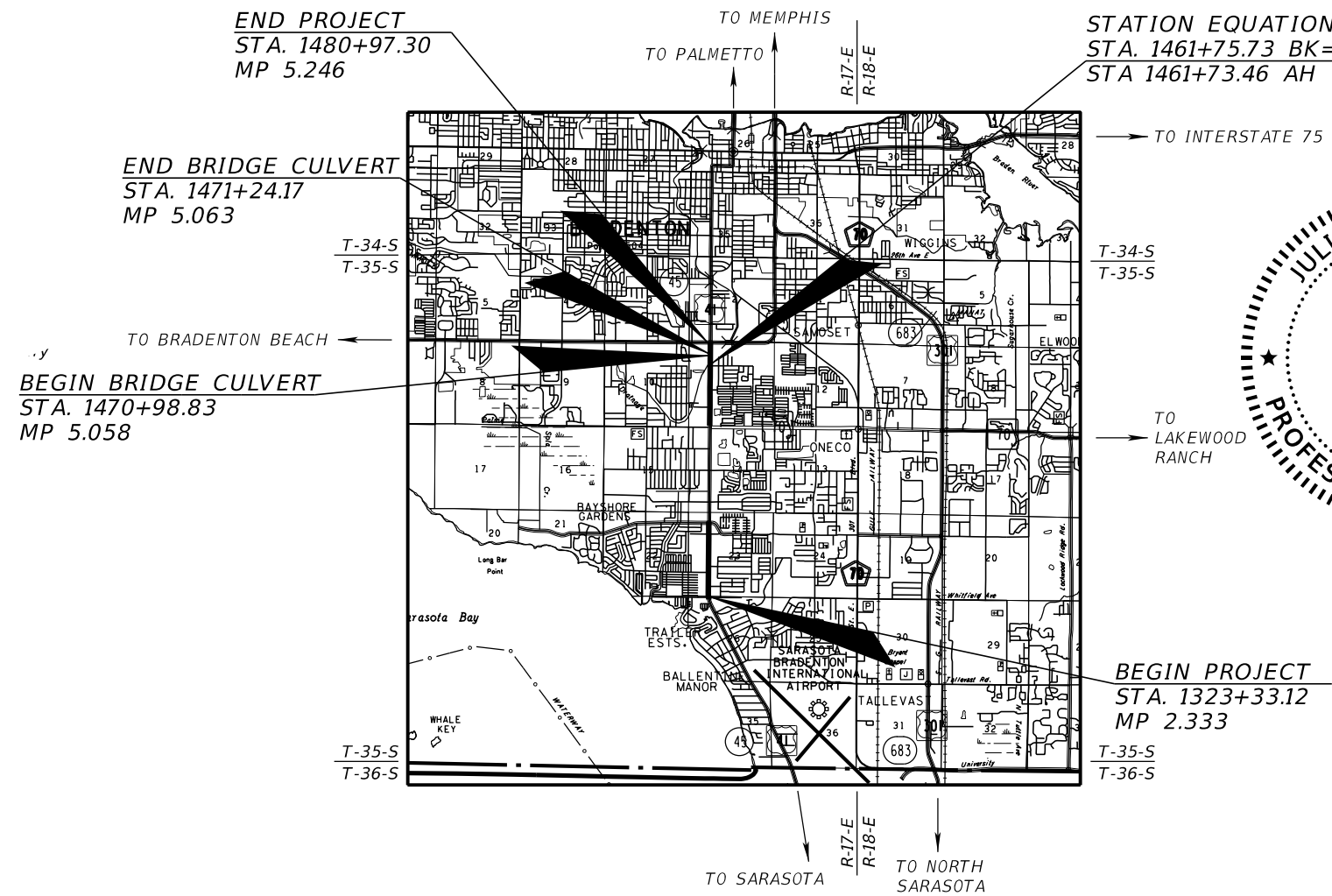
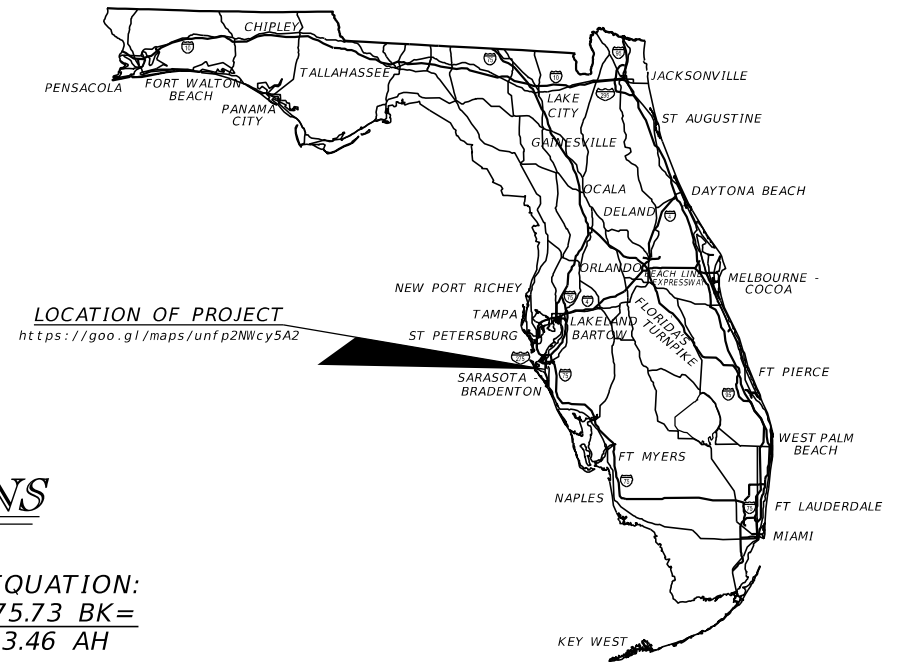
MANATEE COUNTY (13010)

STATE ROAD NO. 45 (US 41)

SIGNING AND PAVEMENT MARKING PLANS

INDEX OF SIGNING AND PAVEMENT MARKING PLANS

SHEET NO.	SHEET DESCRIPTION
S-1	KEY SHEET
S-2 TO S-3	TABULATION OF QUANTITIES
S-4	GENERAL NOTES
S-5 TO S-18	SIGNING AND PAVEMENT MARKING PLAN



THIS ITEM HAS BEEN DIGITALLY SIGNED AND SEALED BY

ON THE DATE ADJACENT TO THE SEAL

PRINTED COPIES OF THIS DOCUMENT ARE NOT CONSIDERED SIGNED AND SEALED AND THE SIGNATURE MUST BE VERIFIED ON ANY ELECTRONIC COPIES.

SIGNING AND PAVEMENT MARKING PLANS
 ENGINEER OF RECORD:

JULIO C. DELGADO, P.E. NO.: 61661
 SCALAR CONSULTING GROUP INC.
 8751 W. BROWARD BOULEVARD, SUITE 307
 PLANTATION, FLORIDA 33324
 CONTACT NO.: (954) 716-6624
 CONTRACT NO.: C9N99
 VENDOR NO.: 451909667

FDOT PROJECT MANAGER:
 AMY BLAIR, P.E.

CONSTRUCTION CONTRACT NO.	FISCAL YEAR	SHEET NO.
22-TA004373DJ	23	S-1

THE OFFICIAL RECORD OF THIS SHEET IS THE ELECTRONIC FILE DIGITALLY SIGNED AND SEALED UNDER RULE 61G15-23.004, F.A.C.

TABULATION OF QUANTITIES

PAY ITEM NO.	DESCRIPTION	UNIT	SHEET NUMBERS												TOTAL THIS SHEET			
			S-5		S-6		S-7		S-8		S-9		S-10		S-11		PLAN	FINAL
			PLAN	FINAL	PLAN	FINAL	PLAN	FINAL	PLAN	FINAL	PLAN	FINAL	PLAN	FINAL	PLAN	FINAL		
700-1-11	SINGLE POST SIGN, F&I GROUND MOUNT, UP TO 12 SF	AS	1		2		1		4		2		1		6		17	
700-1-12	SINGLE POST SIGN, F&I GROUND MOUNT, 12-20 SF	AS													2		2	
700-1-50	SINGLE POST SIGN, RELOCATE	AS						1							3		4	
700-1-60	SINGLE POST SIGN, REMOVE	AS	1		2			4		2		1		8		18		
706-1-3	RAISED PAVEMENT MARKER, TYPE B MONO-DIRECTIONAL YELLOW RETRO-REFLECTIVE/RAISED PAVEMENT MARKERS	EA			25			24		20		4				73		
710-11-290	PAINTED PAVEMENT MARKINGS, STANDARD, YELLOW, ISLAND NOSE	SF			17			18		17		3				55		
710-90	PAINTED PAVEMENT MARKINGS, FINAL SURFACE	LS																
*	PAINTED PAVEMENT MARKINGS, STANDARD, WHITE, SOLID, 6"	GM				0.022										0.022		
*	PAINTED PAVEMENT MARKINGS, STANDARD, WHITE, SOLID FOR CROSSWALK AND ROUNDABOUT, 12"	LF			73	565		4				162				804		
*	PAINTED PAVEMENT MARKINGS, STANDARD, WHITE, SOLID FOR STOP LINE OR CROSSWALK, 24"	LF			13	157						12				182		
*	PAINTED PAVEMENT MARKINGS, STANDARD, YELLOW, SOLID, 6"	GM				0.010										0.010		
711-11-123	THERMOPLASTIC, STANDARD, WHITE, SOLID, 12" FOR CROSSWALK	LF			73	565		4				162				804		
711-11-125	THERMOPLASTIC, STANDARD, WHITE, SOLID, 24" FOR STOP LINE	LF			13	157						12				182		
711-14-125	THERMOPLASTIC, PREFORMED, WHITE, SOLID, 24" FOR CROSSWALK	LF				429										429		
711-15-101	THERMOPLASTIC, STD.-OPEN GRADED ASPHALT SURFACES, WHITE, SOLID, 6"	GM				0.022										0.022		
711-15-201	THERMOPLASTIC, STD.-OPEN GRADED ASPHALT SURFACES, YELLOW, SOLID, 6"	GM				0.010										0.010		
711-17-1	THERMOPLASTIC, REMOVE EXISTING THERMOPLASTIC PAVEMENT MARKINGS- SURFACE TO REMAIN	SF			27	57						32				115		

*THESE QUANTITIES ARE PAID FOR UNDER PAINTED PAVEMENT MARKINGS (FINAL SURFACE), LUMP SUM - ITEM NO. 710-90. THE QUANTITIES SHOWN ARE FOR ONE APPLICATION; SEE SPECIFICATION 710 FOR THE NUMBER OF APPLICATIONS REQUIRED.

REVISIONS				JULIO C. DELGADO, P.E. P.E. LICENSE NUMBER 61661 SCALAR CONSULTING GROUP INC. 8751 W. BROWARD BOULEVARD, SUITE 307 PLANTATION, FLORIDA 33324	MANATEE COUNTY			TABULATION OF QUANTITIES	SHEET NO.
DATE	DESCRIPTION	DATE	DESCRIPTION		ROAD NO.	COUNTY	FINANCIAL PROJECT ID		S-2
					SR 45	MANATEE	433592-4-58-01		

TABULATION OF QUANTITIES

PAY ITEM NO.	DESCRIPTION	UNIT	SHEET NUMBERS												TOTAL THIS SHEET		GRAND TOTAL			
			S-12		S-13		S-14		S-15		S-16		S-17		S-18		PLAN	FINAL	PLAN	FINAL
			PLAN	FINAL	PLAN	FINAL	PLAN	FINAL	PLAN	FINAL	PLAN	FINAL	PLAN	FINAL						
700-1-11	SINGLE POST SIGN, F&I GROUND MOUNT, UP TO 12 SF	AS	3		3		3		1		2		3				15		32	
700-1-12	SINGLE POST SIGN, F&I GROUND MOUNT, 12-20 SF	AS																	2	
700-1-50	SINGLE POST SIGN, RELOCATE	AS			2		1						1				4		8	
700-1-60	SINGLE POST SIGN, REMOVE	AS	3		3		3		1		3		2				15		33	
706-1-3	RAISED PAVEMENT MARKER, TYPE B MONO-DIRECTIONAL YELLOW RETRO-REFLECTIVE/RAISED PAVEMENT MARKERS	EA											29		8		112		185	
710-11-290	PAINTED PAVEMENT MARKINGS, STANDARD, YELLOW, ISLAND NOSE	SF	21		19		19						14		8		81		136	
710-90	PAINTED PAVEMENT MARKINGS, FINAL SURFACE	LS																	1	
*	PAINTED PAVEMENT MARKINGS, STANDARD, WHITE, SOLID, 6"	GM					0.005						0.023				0.029		0.051	
*	PAINTED PAVEMENT MARKINGS, STANDARD, WHITE, SOLID FOR CROSSWALK AND ROUNDABOUT, 12"	LF	77		79		499						454				1109		1913	
*	PAINTED PAVEMENT MARKINGS, STANDARD, WHITE, SOLID FOR STOP LINE OR CROSSWALK, 24"	LF					43						119				162		345	
*	PAINTED PAVEMENT MARKINGS, STANDARD, YELLOW, SOLID, 6"	GM					0.001						0.003				0.004		0.013	
711-11-123	THERMOPLASTIC, STANDARD, WHITE, SOLID, 12" FOR CROSSWALK	LF	77		79		499						454				1109		1913	
711-11-125	THERMOPLASTIC, STANDARD, WHITE, SOLID, 24" FOR STOP LINE	LF					43						119				162		345	
711-14-125	THERMOPLASTIC, PREFORMED, WHITE, SOLID, 24" FOR CROSSWALK	LF					495						495				989.6		1419	
711-15-101	THERMOPLASTIC, STD.-OPEN GRADED ASPHALT SURFACES, WHITE, SOLID, 6"	GM					0.005						0.023				0.029		0.051	
711-15-201	THERMOPLASTIC, STD.-OPEN GRADED ASPHALT SURFACES, YELLOW, SOLID, 6"	GM					0.001						0.008				0.009		0.019	
711-17-1	THERMOPLASTIC, REMOVE EXISTING THERMOPLASTIC PAVEMENT MARKINGS- SURFACE TO REMAIN	SF																	115	

*THESE QUANTITIES ARE PAID FOR UNDER PAINTED PAVEMENT MARKINGS (FINAL SURFACE), LUMP SUM - ITEM NO. 710-90. THE QUANTITIES SHOWN ARE FOR ONE APPLICATION; SEE SPECIFICATION 710 FOR THE NUMBER OF APPLICATIONS REQUIRED.

<table border="1"> <thead> <tr> <th colspan="4">REVISIONS</th> </tr> <tr> <th>DATE</th> <th>DESCRIPTION</th> <th>DATE</th> <th>DESCRIPTION</th> </tr> </thead> <tbody> <tr> <td> </td> <td> </td> <td> </td> <td> </td> </tr> </tbody> </table>				REVISIONS				DATE	DESCRIPTION	DATE	DESCRIPTION					JULIO C. DELGADO, P.E. P.E. LICENSE NUMBER 61661 SCALAR CONSULTING GROUP INC. 8751 W. BROWARD BOULEVARD, SUITE 307 PLANTATION, FLORIDA 33324		MANATEE COUNTY <table border="1"> <tr> <th>ROAD NO.</th> <th>COUNTY</th> <th>FINANCIAL PROJECT ID</th> </tr> <tr> <td>SR 45</td> <td>MANATEE</td> <td>433592-4-58-01</td> </tr> </table>			ROAD NO.	COUNTY	FINANCIAL PROJECT ID	SR 45	MANATEE	433592-4-58-01	TABULATION OF QUANTITIES		SHEET NO. S-3
REVISIONS																													
DATE	DESCRIPTION	DATE	DESCRIPTION																										
ROAD NO.	COUNTY	FINANCIAL PROJECT ID																											
SR 45	MANATEE	433592-4-58-01																											

THE OFFICIAL RECORD OF THIS SHEET IS THE ELECTRONIC FILE DIGITALLY SIGNED AND SEALED UNDER RULE 61G15-23.004, F.A.C.

SIGNING AND PAVEMENT MARKING GENERAL NOTES

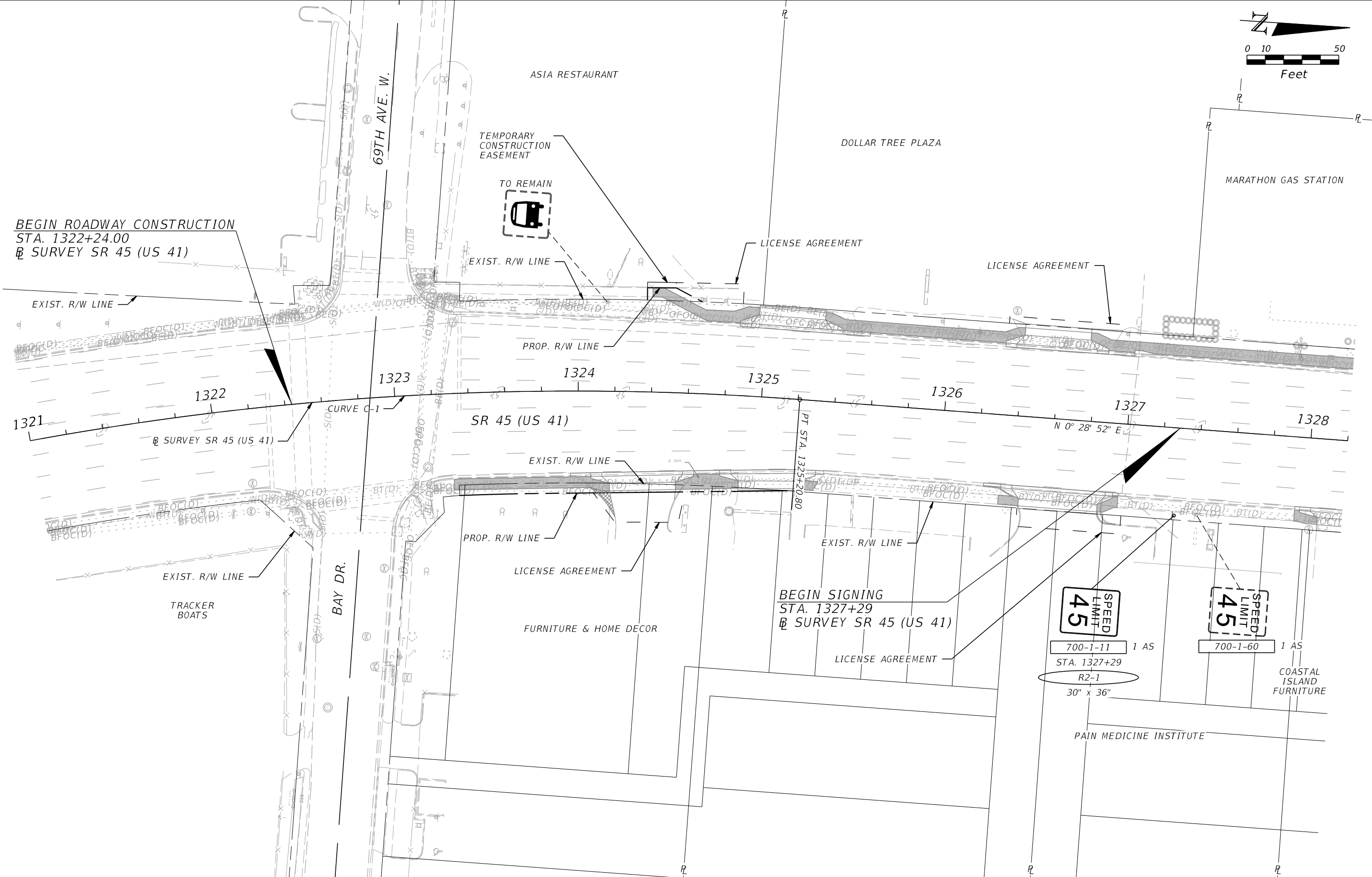
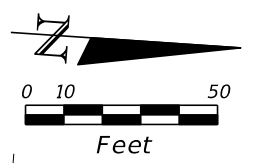
1. SEE THE ROADWAY COMPONENT'S UTILITY ADJUSTMENTS SHEETS FOR UTILITY AGENCY OWNERS AND THEIR CONTACT INFORMATION.
2. UNLESS OTHERWISE NOTED ON PLAN SHEETS, ALL CROSSWALKS ACROSS MAJOR STREET SHALL BE TEN FEET (10') IN WIDTH AND ALL CROSSWALKS ACROSS SIDE STREET SHALL BE SIX FEET (6') IN WIDTH. MEASUREMENTS SHALL BE FROM INSIDE TO INSIDE OF 12" STRIPES.

LEGEND

\mathcal{R} = PROPERTY LINE

REVISIONS				JULIO C. DELGADO, P.E. P.E. LICENSE NUMBER 61661 SCALAR CONSULTING GROUP INC. 8751 W. BROWARD BOULEVARD, SUITE 307 PLANTATION, FLORIDA 33324	MANATEE COUNTY			GENERAL NOTES	SHEET NO.
DATE	DESCRIPTION	DATE	DESCRIPTION		ROAD NO.	COUNTY	FINANCIAL PROJECT ID		S-4
					SR 45	MANATEE	433592-4-58-01		

THE OFFICIAL RECORD OF THIS SHEET IS THE ELECTRONIC FILE DIGITALLY SIGNED AND SEALED UNDER RULE 61G15-23.004, F.A.C.



REVISIONS			
DATE	DESCRIPTION	DATE	DESCRIPTION

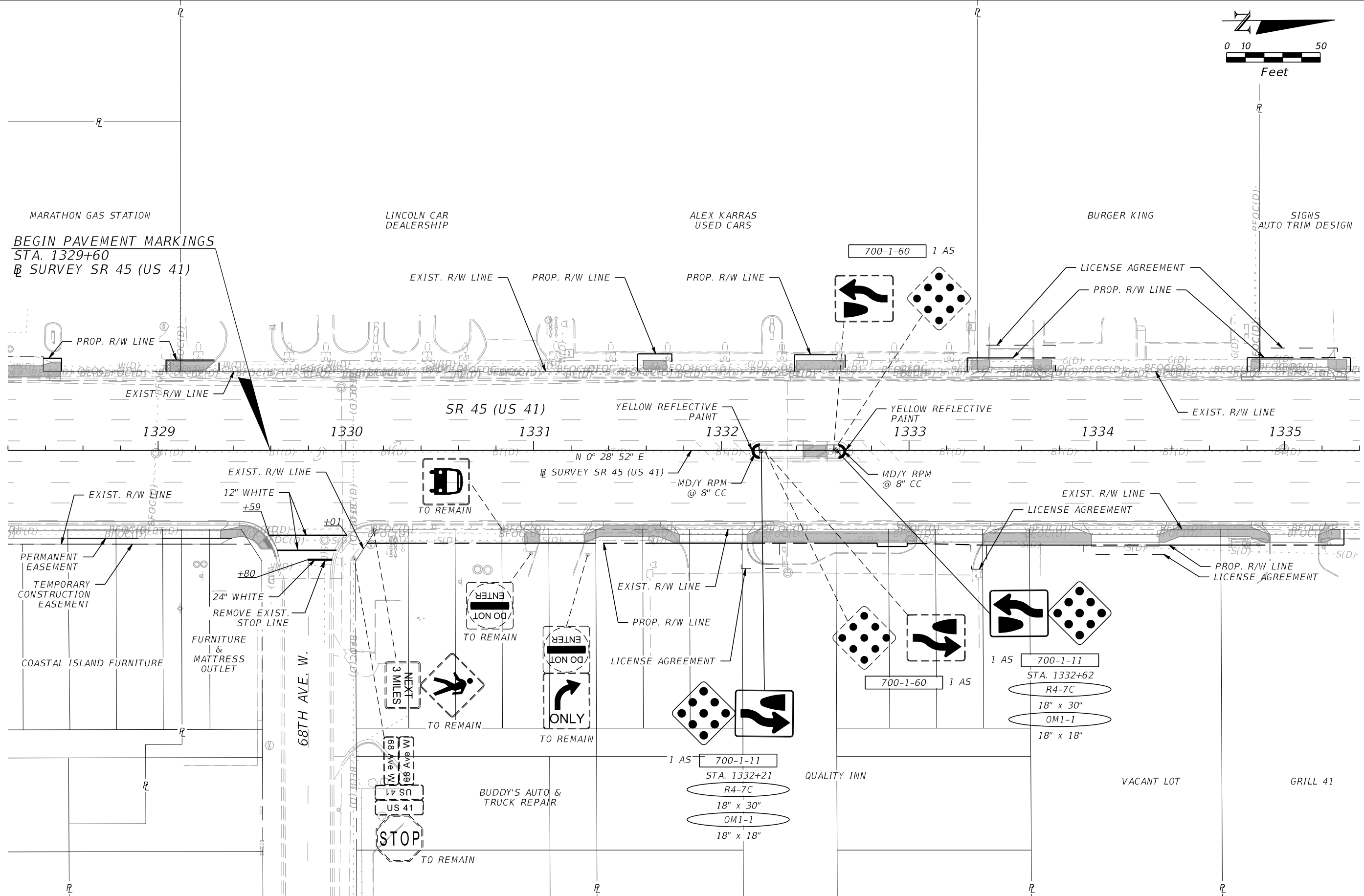
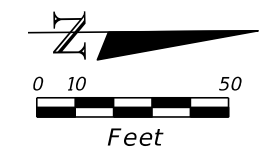
JULIO C. DELGADO, P.E.
 P.E. LICENSE NUMBER 61661
 SCALAR CONSULTING GROUP INC.
 8751 W. BROWARD BOULEVARD, SUITE 307
 PLANTATION, FLORIDA 33324

MANATEE COUNTY		
ROAD NO.	COUNTY	FINANCIAL PROJECT ID
SR 45	MANATEE	433592-4-58-01

SIGNING AND PAVEMENT MARKING PLAN (1)

SHEET NO.
S-5

THE OFFICIAL RECORD OF THIS SHEET IS THE ELECTRONIC FILE DIGITALLY SIGNED AND SEALED UNDER RULE 61G15-23.004, F.A.C.



REVISIONS			
DATE	DESCRIPTION	DATE	DESCRIPTION

JULIO C. DELGADO, P.E.
 P.E. LICENSE NUMBER 61661
 SCALAR CONSULTING GROUP INC.
 8751 W. BROWARD BOULEVARD, SUITE 307
 PLANTATION, FLORIDA 33324

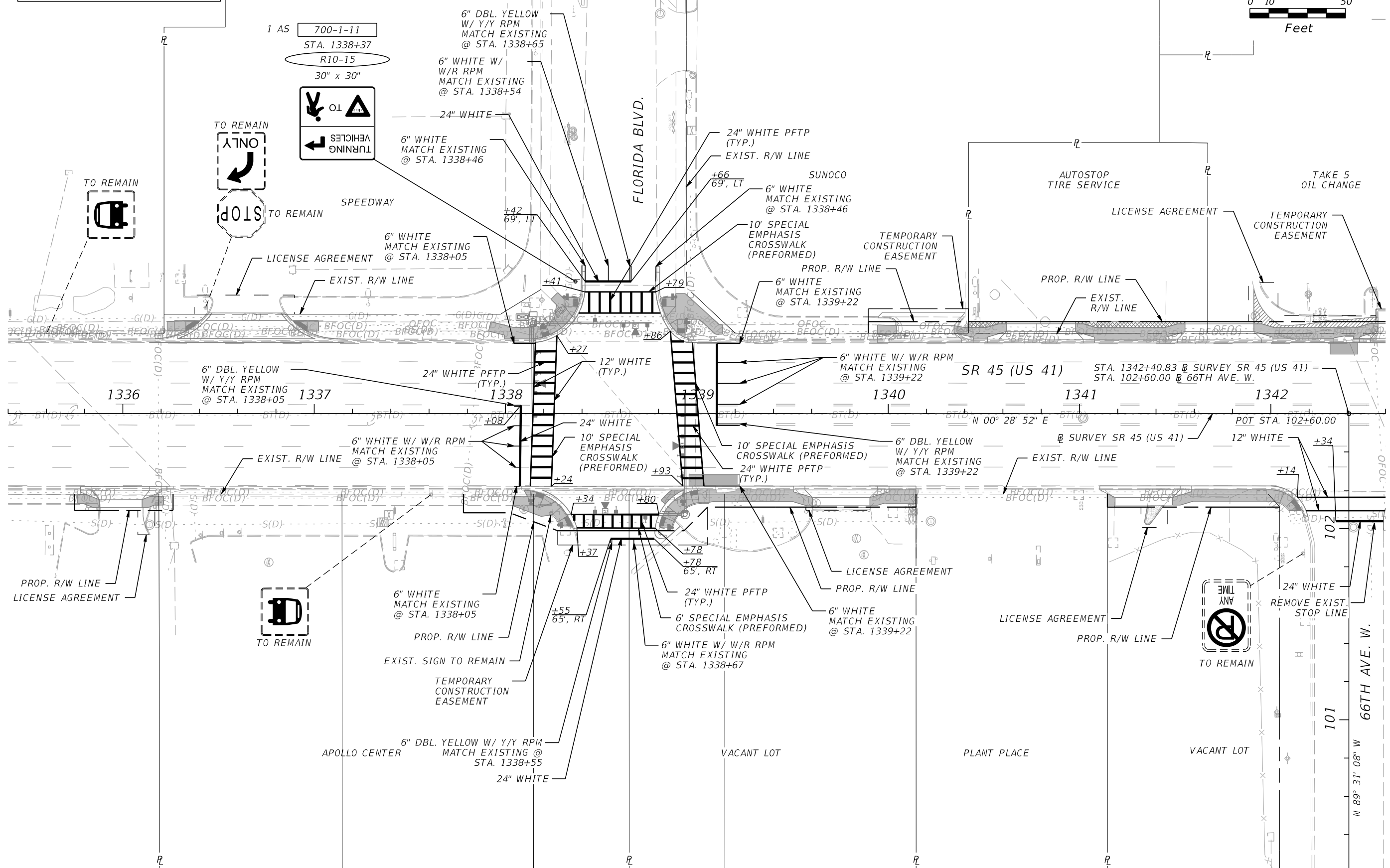
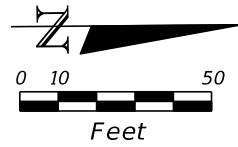
MANATEE COUNTY		
ROAD NO.	COUNTY	FINANCIAL PROJECT ID
SR 45	MANATEE	433592-4-58-01

SIGNING AND PAVEMENT MARKING PLAN (2)

SHEET NO. S-6

THE OFFICIAL RECORD OF THIS SHEET IS THE ELECTRONIC FILE DIGITALLY SIGNED AND SEALED UNDER RULE 61G15-23.004, F.A.C.

LEGEND
PFTP PREFORMED THERMOPLASTIC



REVISIONS			
DATE	DESCRIPTION	DATE	DESCRIPTION

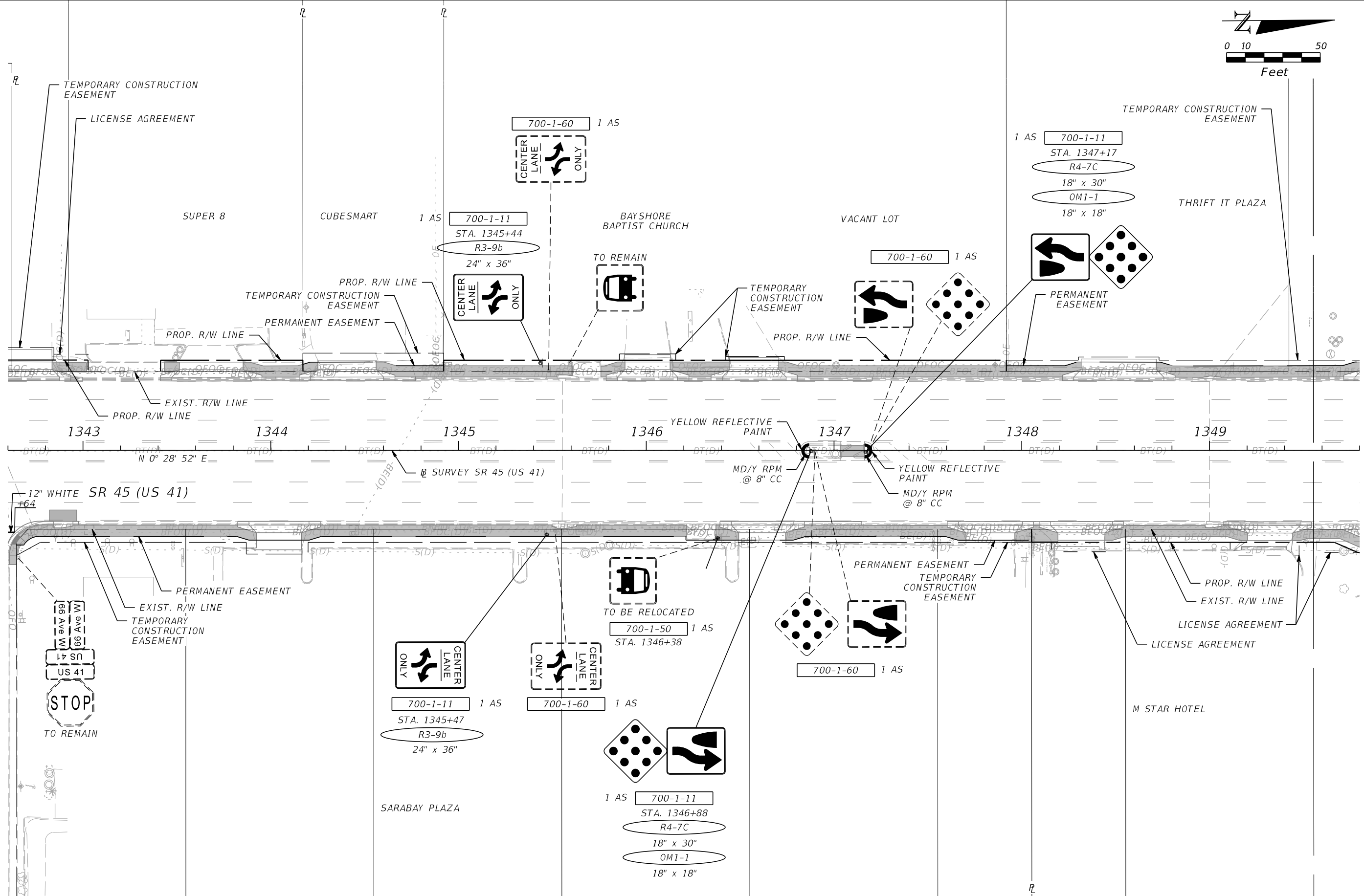
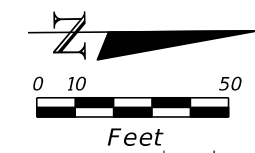
JULIO C. DELGADO, P.E.
P.E. LICENSE NUMBER 61661
SCALAR CONSULTING GROUP INC.
8751 W. BROWARD BOULEVARD, SUITE 307
PLANTATION, FLORIDA 33324

MANATEE COUNTY		
ROAD NO.	COUNTY	FINANCIAL PROJECT ID
SR 45	MANATEE	433592-4-58-01

SIGNING AND PAVEMENT MARKING PLAN (3)

SHEET NO. S-7

THE OFFICIAL RECORD OF THIS SHEET IS THE ELECTRONIC FILE DIGITALLY SIGNED AND SEALED UNDER RULE 61G15-23.004, F.A.C.



REVISIONS			
DATE	DESCRIPTION	DATE	DESCRIPTION

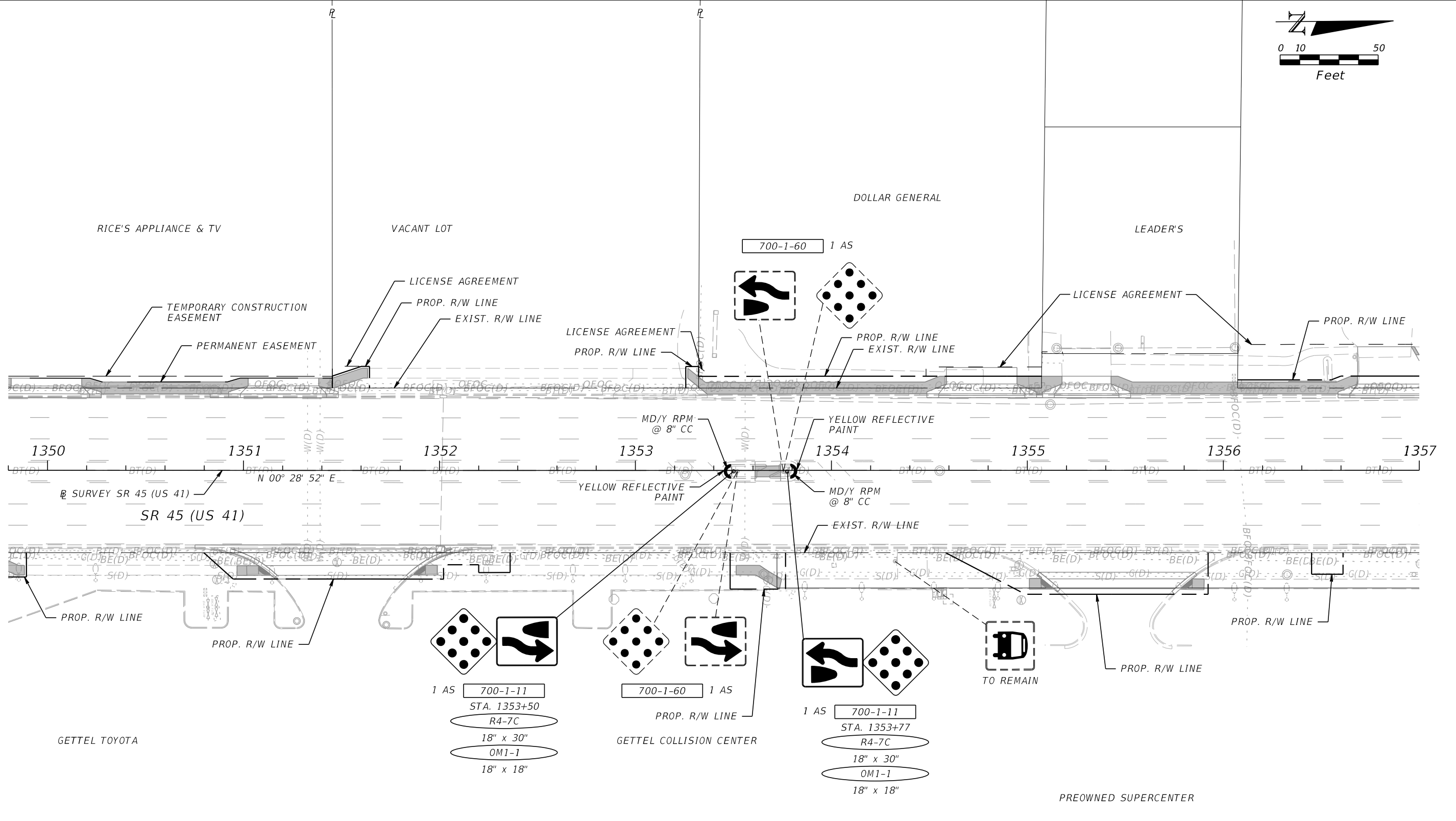
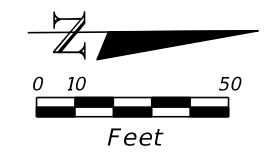
JULIO C. DELGADO, P.E.
 P.E. LICENSE NUMBER 61661
 SCALAR CONSULTING GROUP INC.
 8751 W. BROWARD BOULEVARD, SUITE 307
 PLANTATION, FLORIDA 33324

MANATEE COUNTY		
ROAD NO.	COUNTY	FINANCIAL PROJECT ID
SR 45	MANATEE	433592-4-58-01

**SIGNING AND PAVEMENT
 MARKING PLAN (4)**

SHEET NO.
 S-8

THE OFFICIAL RECORD OF THIS SHEET IS THE ELECTRONIC FILE DIGITALLY SIGNED AND SEALED UNDER RULE 61G15-23.004, F.A.C.



REVISIONS			
DATE	DESCRIPTION	DATE	DESCRIPTION

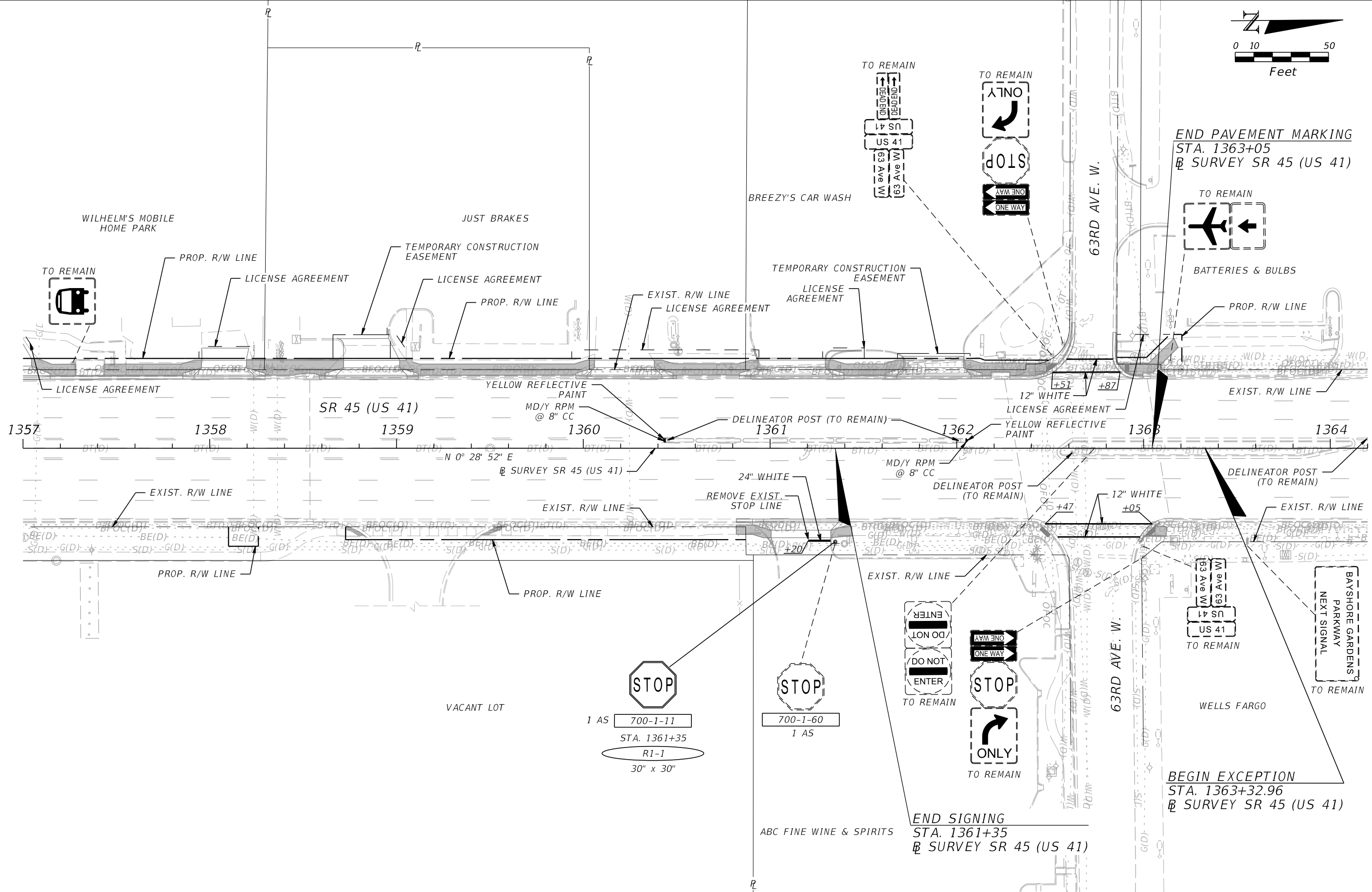
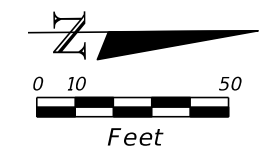
JULIO C. DELGADO, P.E.
P.E. LICENSE NUMBER 61661
SCALAR CONSULTING GROUP INC.
8751 W. BROWARD BOULEVARD, SUITE 307
PLANTATION, FLORIDA 33324

MANATEE COUNTY		
ROAD NO.	COUNTY	FINANCIAL PROJECT ID
SR 45	MANATEE	433592-4-58-01

**SIGNING AND PAVEMENT
MARKING PLAN (5)**

SHEET NO.
S-9

THE OFFICIAL RECORD OF THIS SHEET IS THE ELECTRONIC FILE DIGITALLY SIGNED AND SEALED UNDER RULE 61G15-23.004, F.A.C.



REVISIONS			
DATE	DESCRIPTION	DATE	DESCRIPTION

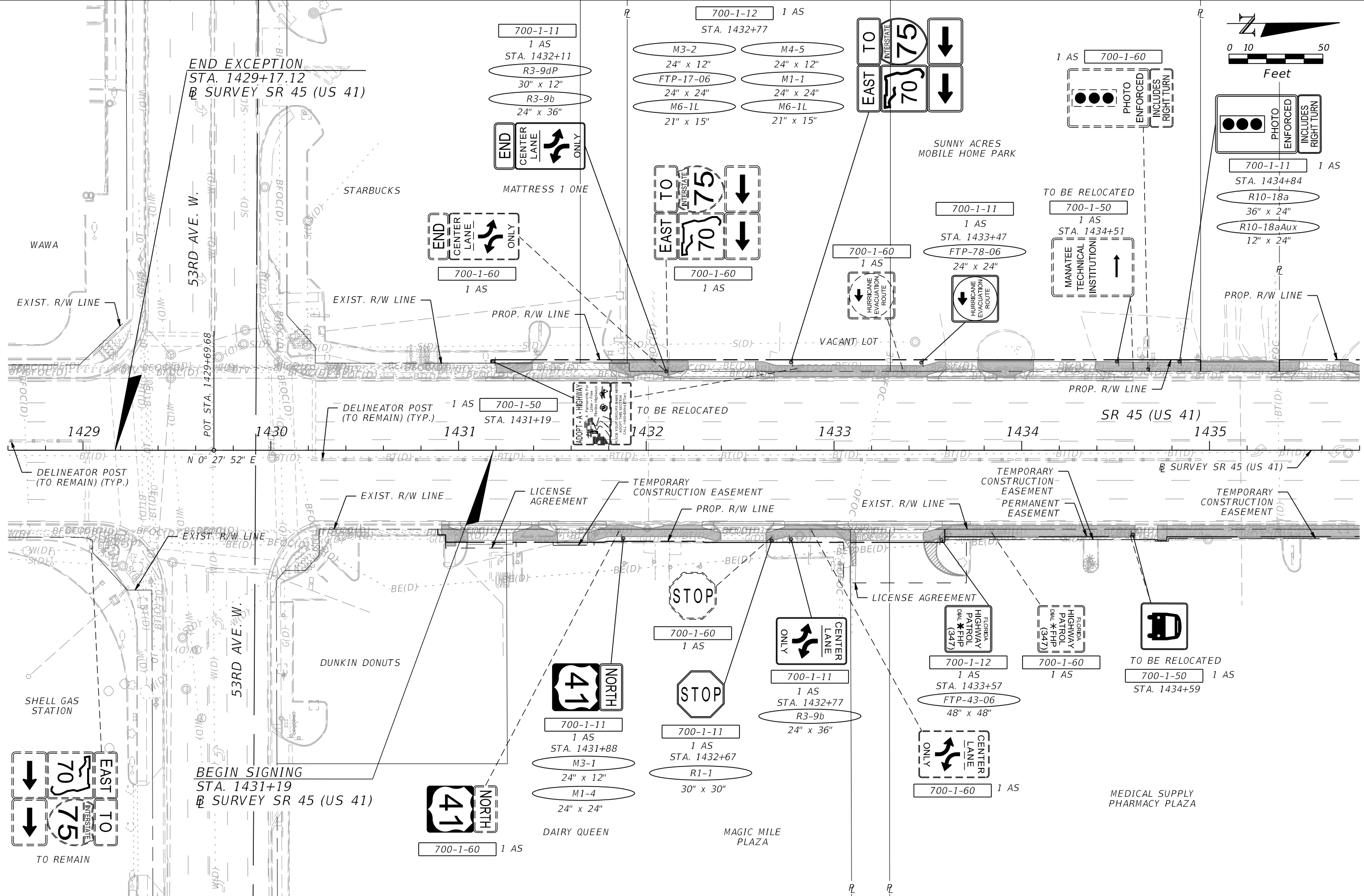
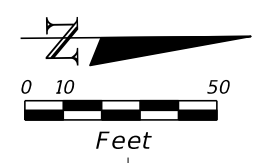
JULIO C. DELGADO, P.E.
 P.E. LICENSE NUMBER 61661
 SCALAR CONSULTING GROUP INC.
 8751 W. BROWARD BOULEVARD, SUITE 307
 PLANTATION, FLORIDA 33324

MANATEE COUNTY		
ROAD NO.	COUNTY	FINANCIAL PROJECT ID
SR 45	MANATEE	433592-4-58-01

SIGNING AND PAVEMENT MARKING PLAN (6)

SHEET NO.
S-10

THE OFFICIAL RECORD OF THIS SHEET IS THE ELECTRONIC FILE DIGITALLY SIGNED AND SEALED UNDER RULE 61G15-23.004, F.A.C.



REVISIONS			
DATE	DESCRIPTION	DATE	DESCRIPTION

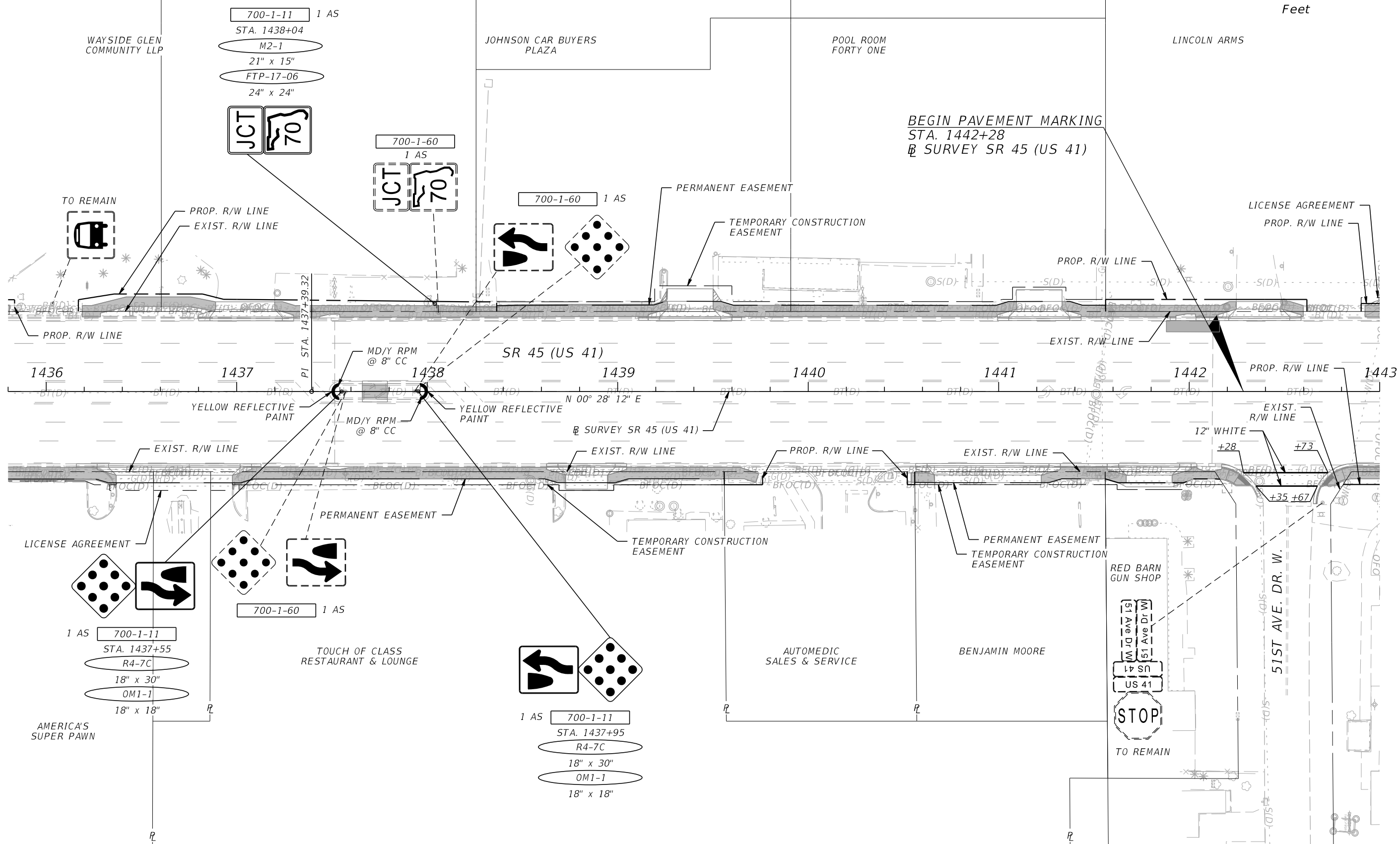
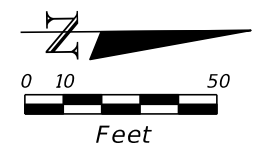
JULIO C. DELGADO, P.E.
 P.E. LICENSE NUMBER 61661
 SCALAR CONSULTING GROUP INC.
 8751 W. BROWARD BOULEVARD, SUITE 307
 PLANTATION, FLORIDA 33324

MANATEE COUNTY		
ROAD NO.	COUNTY	FINANCIAL PROJECT ID
SR 45	MANATEE	433592-4-58-01

SIGNING AND PAVEMENT MARKING PLAN (7)

SHEET NO.
S-11

THE OFFICIAL RECORD OF THIS SHEET IS THE ELECTRONIC FILE DIGITALLY SIGNED AND SEALED UNDER RULE 61G15-23.004, F.A.C.



REVISIONS			
DATE	DESCRIPTION	DATE	DESCRIPTION

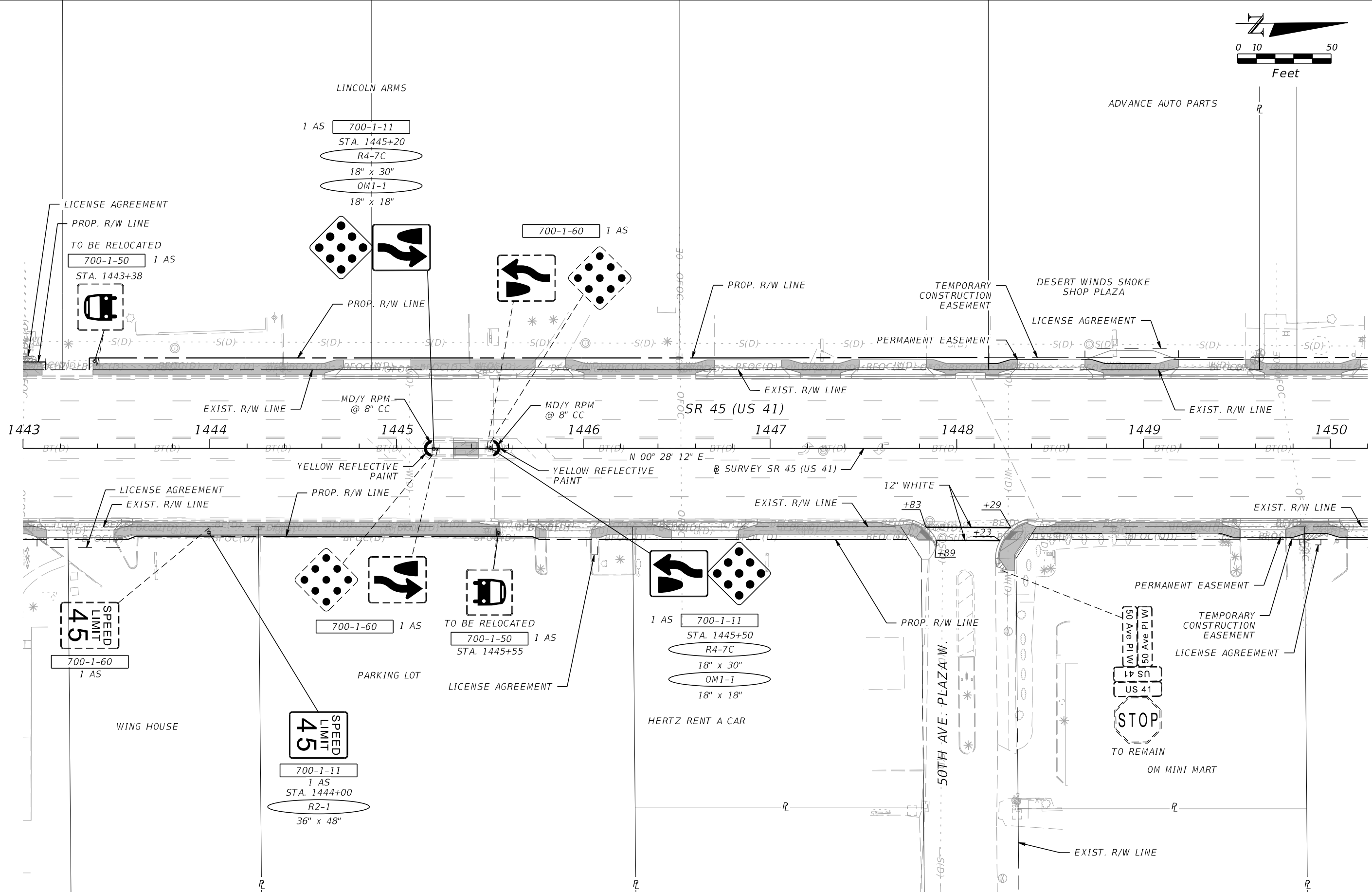
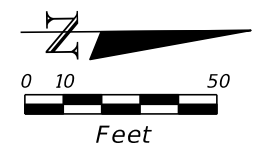
JULIO C. DELGADO, P.E.
 P.E. LICENSE NUMBER 61661
 SCALAR CONSULTING GROUP INC.
 8751 W. BROWARD BOULEVARD, SUITE 307
 PLANTATION, FLORIDA 33324

MANATEE COUNTY		
ROAD NO.	COUNTY	FINANCIAL PROJECT ID
SR 45	MANATEE	433592-4-58-01

SIGNING AND PAVEMENT MARKING PLAN (8)

SHEET NO.
S-12

THE OFFICIAL RECORD OF THIS SHEET IS THE ELECTRONIC FILE DIGITALLY SIGNED AND SEALED UNDER RULE 61G15-23.004, F.A.C.



REVISIONS			
DATE	DESCRIPTION	DATE	DESCRIPTION

JULIO C. DELGADO, P.E.
 P.E. LICENSE NUMBER 61661
 SCALAR CONSULTING GROUP INC.
 8751 W. BROWARD BOULEVARD, SUITE 307
 PLANTATION, FLORIDA 33324

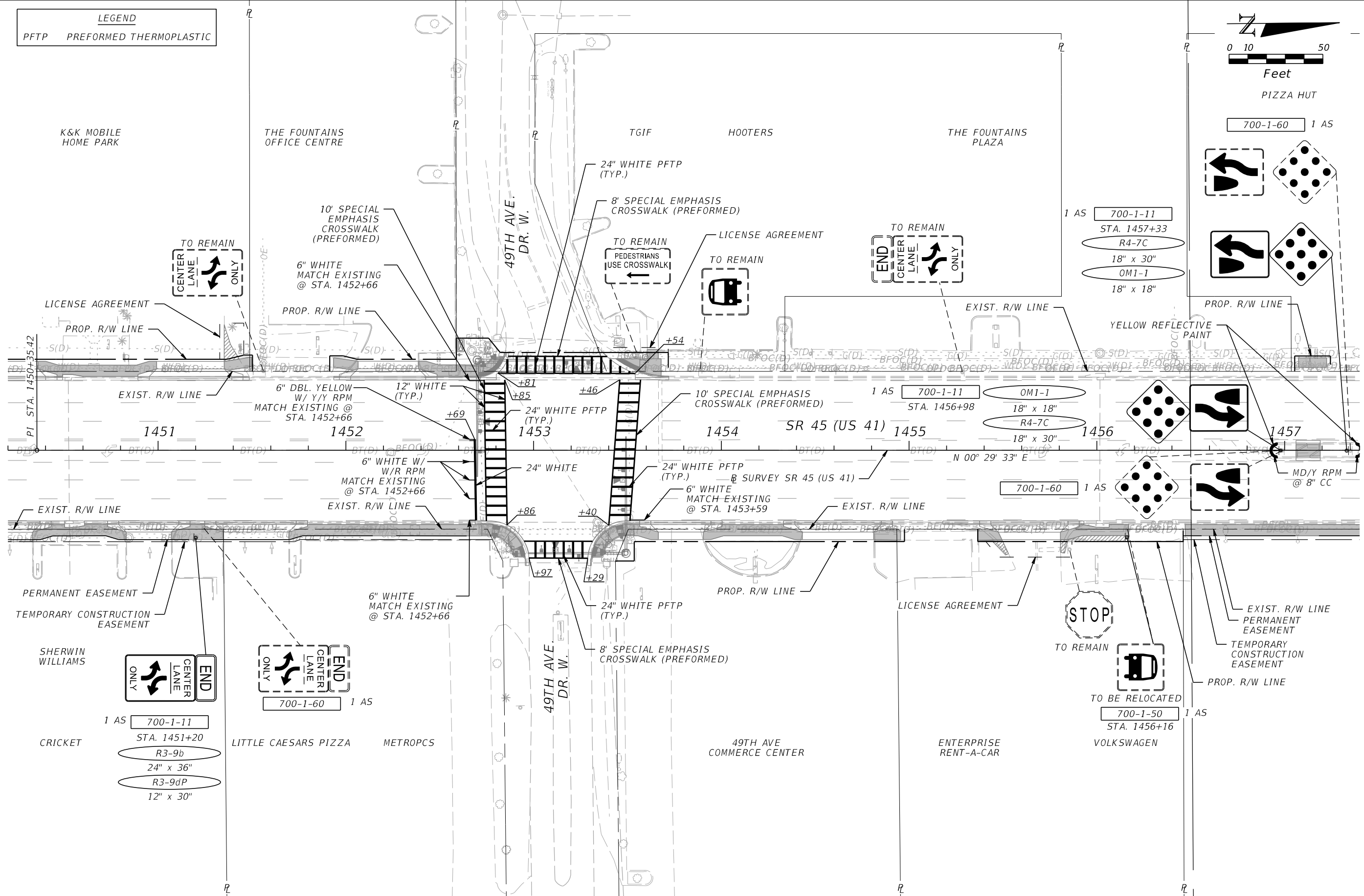
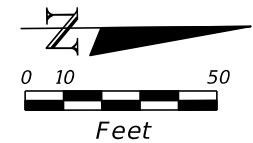
MANATEE COUNTY		
ROAD NO.	COUNTY	FINANCIAL PROJECT ID
SR 45	MANATEE	433592-4-58-01

SIGNING AND PAVEMENT MARKING PLAN (9)

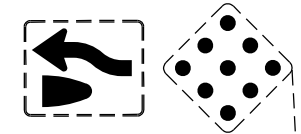
SHEET NO.
 S-13

THE OFFICIAL RECORD OF THIS SHEET IS THE ELECTRONIC FILE DIGITALLY SIGNED AND SEALED UNDER RULE 61G15-23.004, F.A.C.

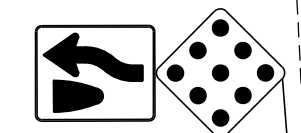
LEGEND
PFTP PREFORMED THERMOPLASTIC



PIZZA HUT
700-1-60 1 AS



1 AS 700-1-11
STA. 1457+33
R4-7C
18" x 30"
OM1-1
18" x 18"

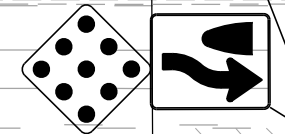


PROP. R/W LINE
YELLOW REFLECTIVE PAINT



EXIST. R/W LINE

1 AS 700-1-11
STA. 1456+98
OM1-1
18" x 18"
R4-7C
18" x 30"



700-1-60 1 AS



MD/Y RPM @ 8" CC



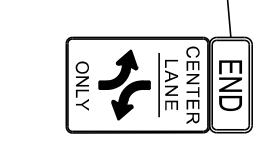
TO REMAIN



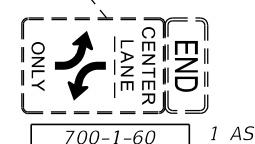
TO BE RELOCATED
700-1-50 1 AS
STA. 1456+16
VOLKSWAGEN

EXIST. R/W LINE
PERMANENT EASEMENT
TEMPORARY CONSTRUCTION EASEMENT

PROP. R/W LINE



1 AS 700-1-11
STA. 1451+20
R3-9b
24" x 36"
R3-9dP
12" x 30"



700-1-60 1 AS

REVISIONS			
DATE	DESCRIPTION	DATE	DESCRIPTION

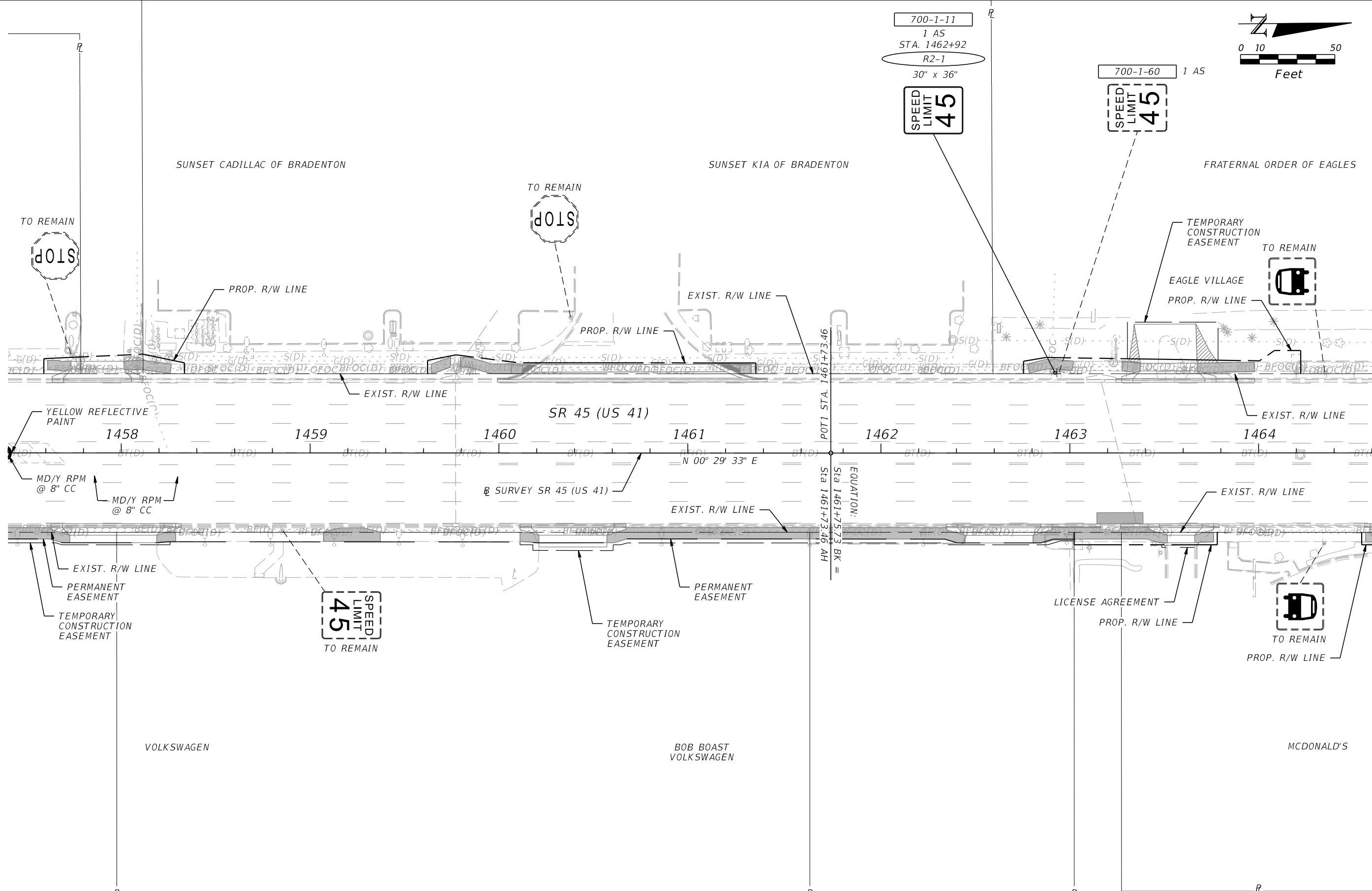
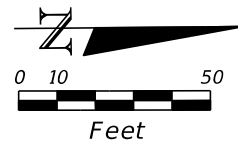
JULIO C. DELGADO, P.E.
P.E. LICENSE NUMBER 61661
SCALAR CONSULTING GROUP INC.
8751 W. BROWARD BOULEVARD, SUITE 307
PLANTATION, FLORIDA 33324

MANATEE COUNTY		
ROAD NO.	COUNTY	FINANCIAL PROJECT ID
SR 45	MANATEE	433592-4-58-01

SIGNING AND PAVEMENT MARKING PLAN (10)

SHEET NO. S-14

THE OFFICIAL RECORD OF THIS SHEET IS THE ELECTRONIC FILE DIGITALLY SIGNED AND SEALED UNDER RULE 61G15-23.004, F.A.C.



REVISIONS			
DATE	DESCRIPTION	DATE	DESCRIPTION

JULIO C. DELGADO, P.E.
 P.E. LICENSE NUMBER 61661
 SCALAR CONSULTING GROUP INC.
 8751 W. BROWARD BOULEVARD, SUITE 307
 PLANTATION, FLORIDA 33324

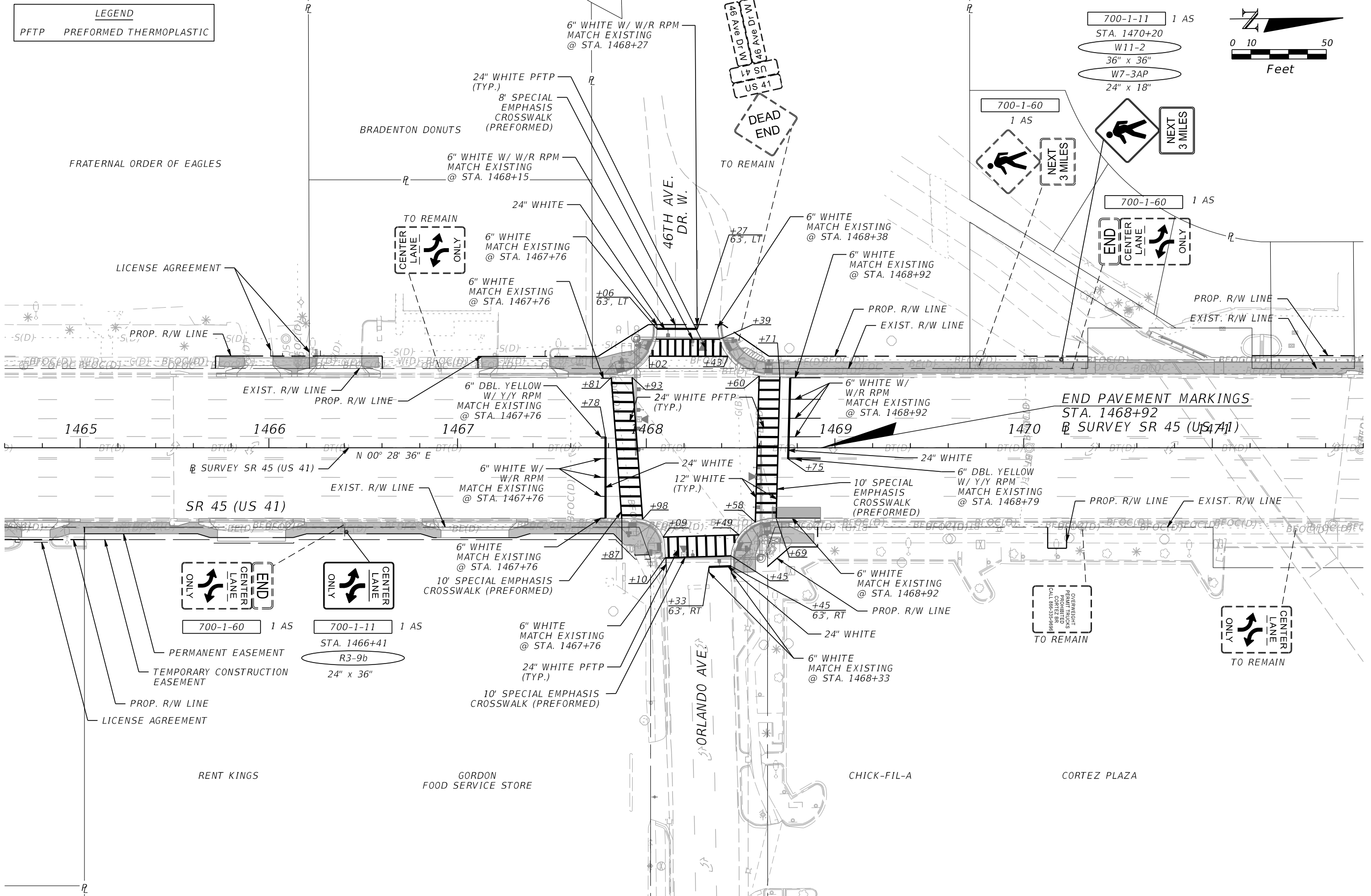
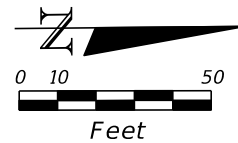
MANATEE COUNTY		
ROAD NO.	COUNTY	FINANCIAL PROJECT ID
SR 45	MANATEE	433592-4-58-01

SIGNING AND PAVEMENT MARKING PLAN (11)

SHEET NO.
S-15

THE OFFICIAL RECORD OF THIS SHEET IS THE ELECTRONIC FILE DIGITALLY SIGNED AND SEALED UNDER RULE 61G15-23.004, F.A.C.

LEGEND
 PFTP PREFORMED THERMOPLASTIC



REVISIONS			
DATE	DESCRIPTION	DATE	DESCRIPTION

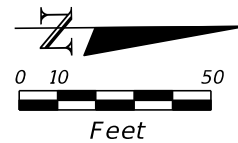
JULIO C. DELGADO, P.E.
 P.E. LICENSE NUMBER 61661
 SCALAR CONSULTING GROUP INC.
 8751 W. BROWARD BOULEVARD, SUITE 307
 PLANTATION, FLORIDA 33324

MANATEE COUNTY		
ROAD NO.	COUNTY	FINANCIAL PROJECT ID
SR 45	MANATEE	433592-4-58-01

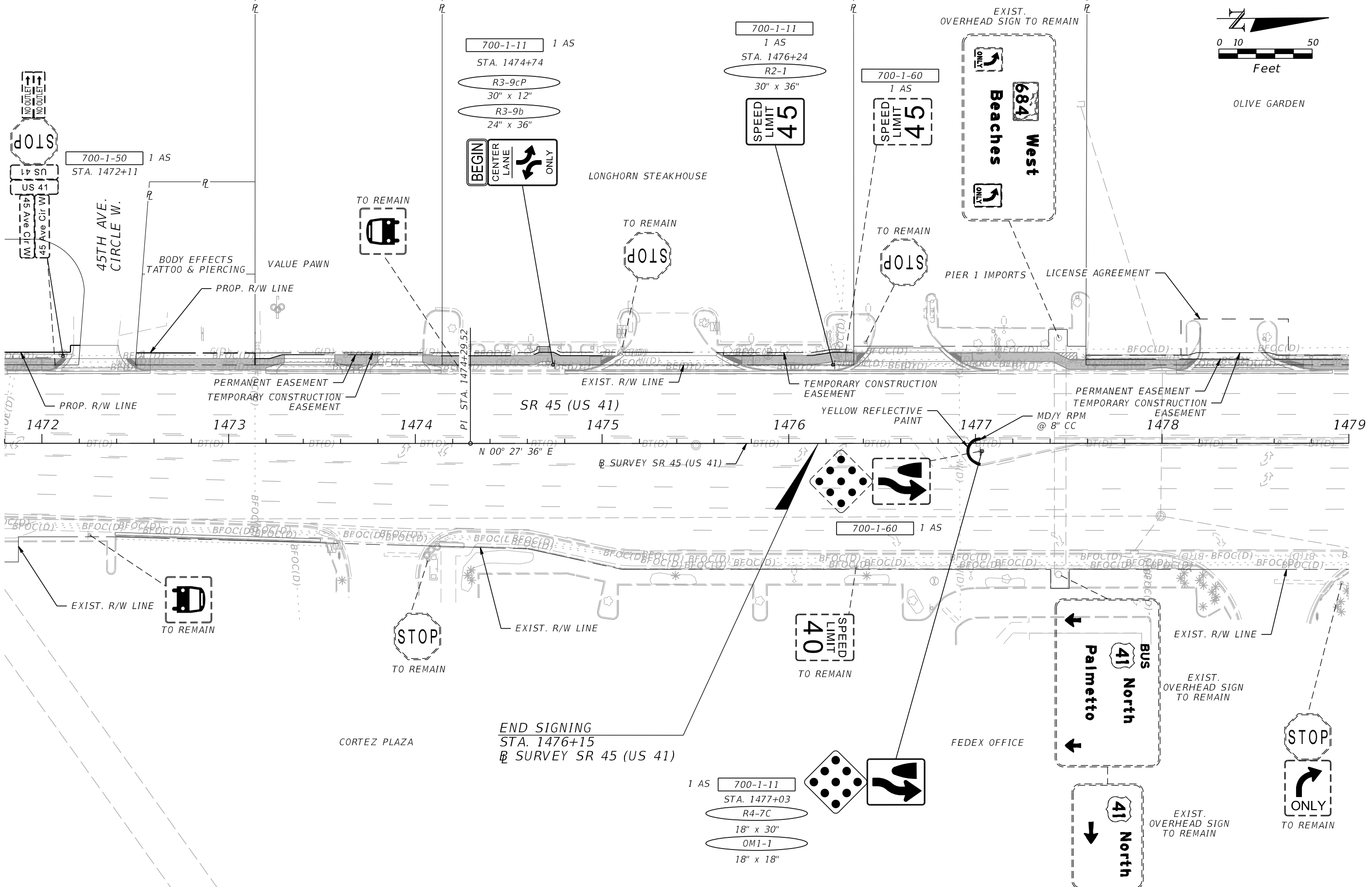
SIGNING AND PAVEMENT MARKING PLAN (12)

SHEET NO.
 S-16

THE OFFICIAL RECORD OF THIS SHEET IS THE ELECTRONIC FILE DIGITALLY SIGNED AND SEALED UNDER RULE 61G15-23.004, F.A.C.



OLIVE GARDEN



REVISIONS			
DATE	DESCRIPTION	DATE	DESCRIPTION

JULIO C. DELGADO, P.E.
 P.E. LICENSE NUMBER 61661
 SCALAR CONSULTING GROUP INC.
 8751 W. BROWARD BOULEVARD, SUITE 307
 PLANTATION, FLORIDA 33324

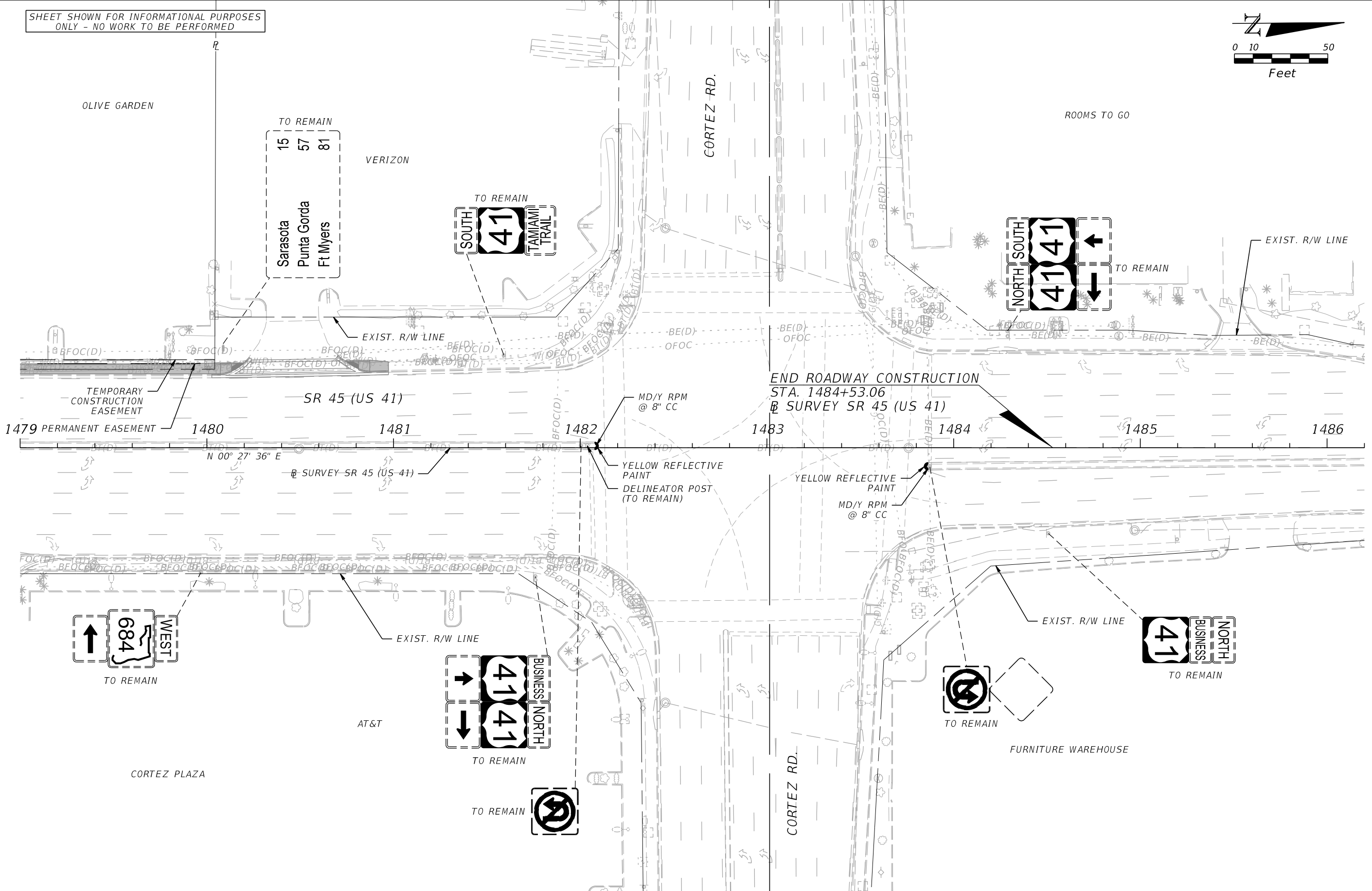
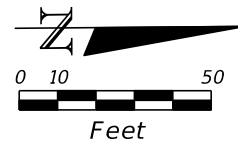
MANATEE COUNTY		
ROAD NO.	COUNTY	FINANCIAL PROJECT ID
SR 45	MANATEE	433592-4-58-01

SIGNING AND PAVEMENT MARKING PLAN (13)

SHEET NO.
S-17

THE OFFICIAL RECORD OF THIS SHEET IS THE ELECTRONIC FILE DIGITALLY SIGNED AND SEALED UNDER RULE 61G15-23.004, F.A.C.

SHEET SHOWN FOR INFORMATIONAL PURPOSES ONLY - NO WORK TO BE PERFORMED



REVISIONS			
DATE	DESCRIPTION	DATE	DESCRIPTION

JULIO C. DELGADO, P.E.
P.E. LICENSE NUMBER 61661
SCALAR CONSULTING GROUP INC.
8751 W. BROWARD BOULEVARD, SUITE 307
PLANTATION, FLORIDA 33324

MANATEE COUNTY		
ROAD NO.	COUNTY	FINANCIAL PROJECT ID
SR 45	MANATEE	433592-4-58-01

SIGNING AND PAVEMENT MARKING PLAN (14)

SHEET NO.
S-18

THE OFFICIAL RECORD OF THIS SHEET IS THE ELECTRONIC FILE DIGITALLY SIGNED AND SEALED UNDER RULE 61G15-23.004, F.A.C.