

STATE OF FLORIDA
DEPARTMENT OF TRANSPORTATION

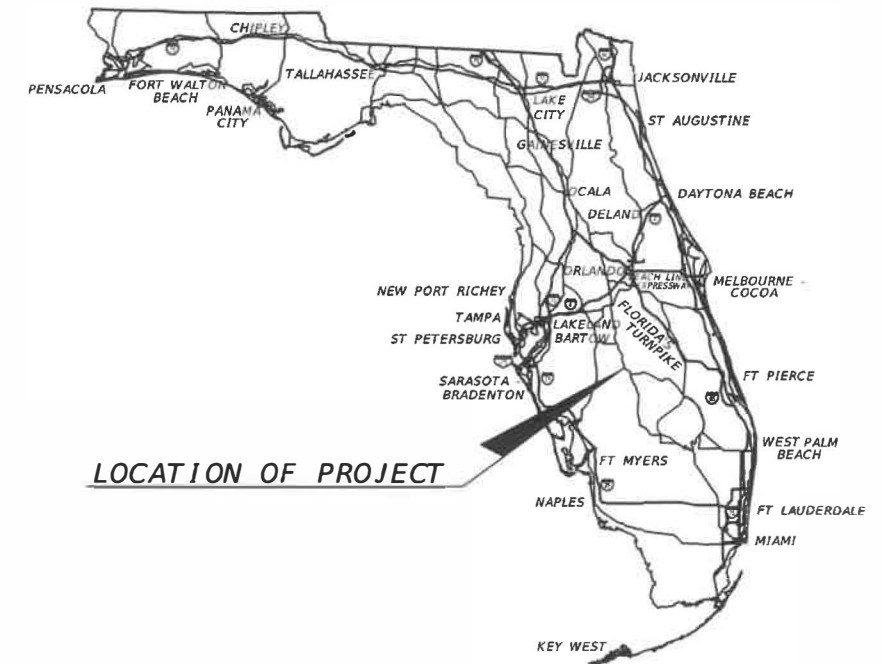
FINAL AS-BUILT PLANS
~~CONTRACT PLANS~~

FINANCIAL PROJECT ID 434986-1-52-01
(FEDERAL FUNDS)
HIGHLANDS COUNTY (09030000 & 09080000)
STATE ROAD NO. 25 (US 27)

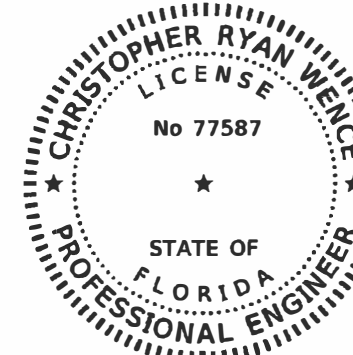
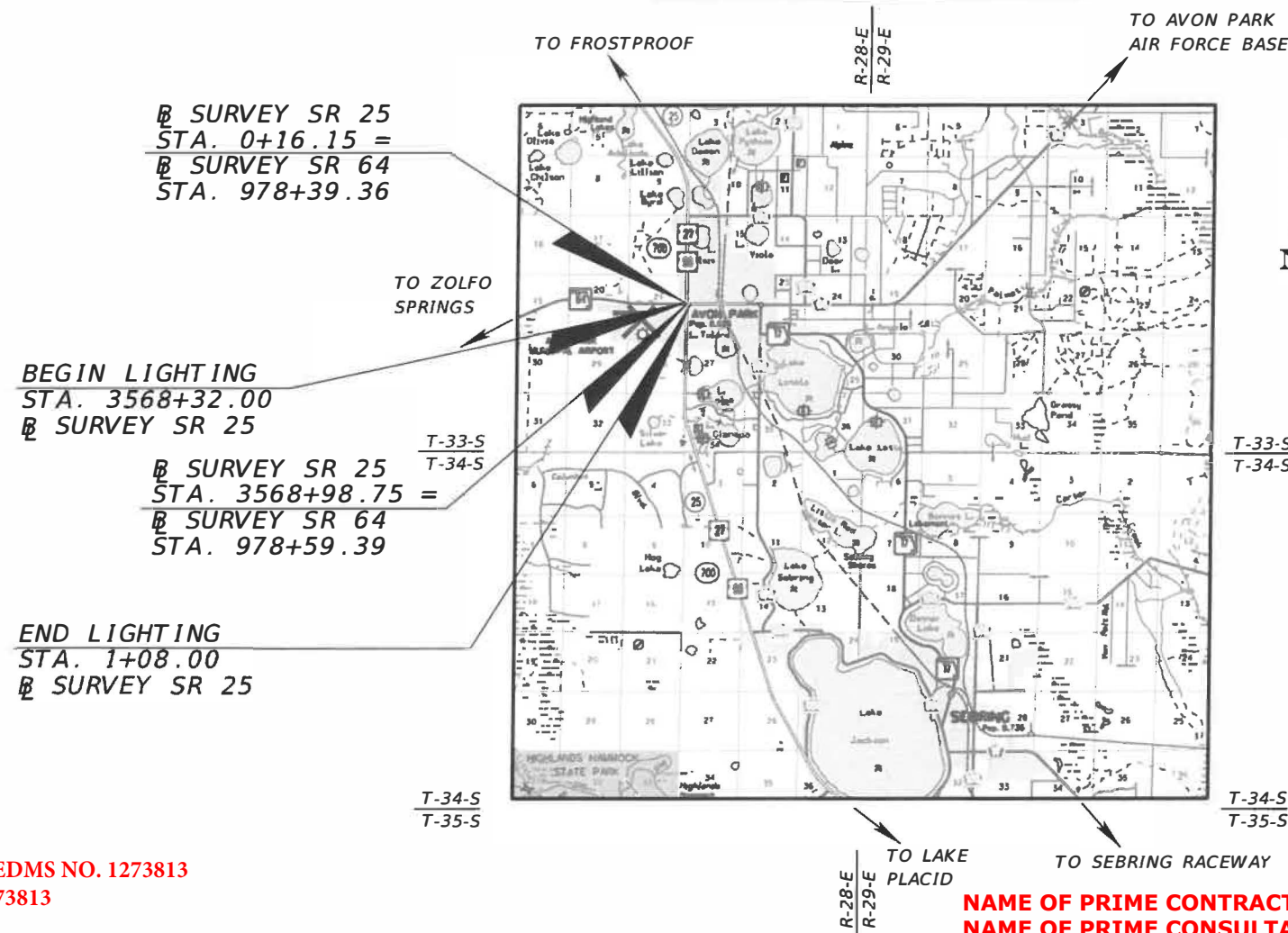
LIGHTING PLANS

INDEX OF LIGHTING PLANS

SHEET NO.	SHEET DESCRIPTION
L-1	KEY SHEET
L-2	TABULATION OF QUANTITIES
L-3	POLE DATA, LEGEND, & GENERAL NOTES
L-4	LIGHTING PLAN
L-5	UTILITY ADJUSTMENTS



LOCATION OF PROJECT



THIS DOCUMENT HAS BEEN DIGITALLY SIGNED AND SEALED BY:
Digitally signed by Christopher R Wence
Date: 2017.12.15 14:07:31 -05'00'

PRINTED COPIES OF THIS DOCUMENT ARE NOT CONSIDERED SIGNED AND SEALED. THE SIGNATURE MUST BE VERIFIED ON THE ELECTRONIC DOCUMENTS.

LIGHTING PLANS
ENGINEER OF RECORD:
CHRISTOPHER RYAN WENCE, P.E.
P.E. NO.: 77587
COMPREHENSIVE ENGINEERING SERVICES, INC.
201 S. ORANGE AVENUE, SUITE 1300
ORLANDO FLORIDA, 32801
(407) 423-1600
CONTRACT NO.: C9H62
VENDOR NO.: F59347222001
CERTIFICATE OF AUTHORIZATION NO.: 7862

FDOT PROJECT MANAGER:
AMY E. BLAIR, P.E.

SUBMITTAL DATA - LIGHTING - FINAL - EDMS NO. 1273813
DIRECTIONAL BORE LOGS - EDMS NO. 1273813

NAME OF PRIME CONTRACTOR: CONCRETE SERVICES LLC
NAME OF PRIME CONSULTANT CONSTRUCTION ENGINEERING INSPECTION: WOOD E&I SOLUTIONS
DISTRICT SECRETARY: L.K. NANDAM, P.E.
PROJECT MANAGER: STACY HILL / SUSAN HINDMAN
PROJECT ADMINISTRATOR: TODD BOEHMER, P.E. DATE WORK STARTED: JUNE 4, 2018
DATE OF FINAL ACCEPTANCE: OCTOBER 1, 2019

CONSTRUCTION CONTRACT NO.	FISCAL YEAR	SHEET NO.
T1701	18	L-1

THE OFFICIAL RECORD OF THIS SHEET IS THE ELECTRONIC FILE DIGITALLY SIGNED AND SEALED UNDER RULE 61G15-23.004, F.A.C.

STATE OF FLORIDA, PROFESSIONAL ENGINEER, LICENSE NO.

THIS ITEM HAS BEEN DIGITALLY SIGNED AND SEALED BY
ON THE DATE INDICATED HERE

PRINTED COPIES OF THIS DOCUMENT ARE NOT CONSIDERED SIGNED AND
SEALED AND THE SIGNATURE MUST BE VERIFIED ON ANY ELECTRONIC
COPIES.

Date	Name	Position (Title)	Review Type, If Applicable
RESIDENT OFFICE			
DISTRICT OFFICE			

REVISIONS				STATE OF FLORIDA DEPARTMENT OF TRANSPORTATION	FINAL "AS-BUILT" SIGNATURE SHEET	SHEET NO.
DATE	DESCRIPTION	DATE	DESCRIPTION			

TABULATION OF QUANTITIES

PAY ITEM NO.	DESCRIPTION	UNIT	SHEET NUMBERS												TOTAL THIS SHEET		GRAND TOTAL			
			L-4																	
			PLAN	FINAL	PLAN	FINAL	PLAN	FINAL	PLAN	FINAL	PLAN	FINAL	PLAN	FINAL	PLAN	FINAL	PLAN	FINAL		
0630 2 11	CONDUIT, FURNISH & INSTALL, OPEN TRENCH	LF	57	✓													57	✓	57	✓
0630 2 12	CONDUIT, FURNISH & INSTALL, DIRECTIONAL BORE	LF	650	✓													650	✓	650	✓
0635 2 11	PULL & SPLICE BOX, F&I, 13" x 24" COVER SIZE	EA	11	10													11	10	11	10
0639 1122	ELECTRICAL POWER SERVICE, F&I, UNDERGROUND, METER PURCHASED BY CONTRACTOR	AS	1	✓													1	✓	1	✓
0641 2 12	PRESTRESSED CONCRETE POLE, F&I, TYPE P-11 SERVICE POLE	EA	1	✓													1	✓	1	✓
0715 1 12	LIGHTING CONDUCTORS, F&I, INSULATED, NO.8-6	LF	2841	✓													2841	✓	2841	✓
0715 4 12	LIGHT POLE COMPLETE, F&I STANDARD POLE, STANDARD FOUNDATION, MOUNTING HEIGHT 35'	EA	8	✓													8	✓	8	✓
0715500 1	POLE CABLE DISTRIBUTION SYSTEM, CONVENTIONAL	EA	8	✓													8	✓	8	✓

PAY ITEM NOTES

1. ITEM 639-1-122: DISCONNECT TO INCLUDE A PHOTOELECTRIC CELL FOR THE LIGHTING CIRCUIT LOCATED ON THE DISCONNECT BOX.

<p align="center">REVISIONS</p> <table border="1"> <thead> <tr> <th>DATE</th> <th>DESCRIPTION</th> <th>DATE</th> <th>DESCRIPTION</th> </tr> </thead> <tbody> <tr> <td> </td> <td> </td> <td> </td> <td> </td> </tr> </tbody> </table>				DATE	DESCRIPTION	DATE	DESCRIPTION					<p>Comprehensive Engineering Services, Inc. 201 S Orange Ave, Suite 1300 Orlando, FL 32801-3442 Certificate of Authorization No. 7862 Christopher Ryan Wence, P.E., License No. 77587</p>			<p align="center">STATE OF FLORIDA DEPARTMENT OF TRANSPORTATION</p> <table border="1"> <thead> <tr> <th>ROAD NO.</th> <th>COUNTY</th> <th>FINANCIAL PROJECT ID</th> </tr> </thead> <tbody> <tr> <td>SR 25</td> <td>HIGHLANDS</td> <td>434986-1-52-01</td> </tr> </tbody> </table>			ROAD NO.	COUNTY	FINANCIAL PROJECT ID	SR 25	HIGHLANDS	434986-1-52-01	<p align="center">TABULATION OF QUANTITIES</p>		<p align="center">SHEET NO. L-2</p>
DATE	DESCRIPTION	DATE	DESCRIPTION																							
ROAD NO.	COUNTY	FINANCIAL PROJECT ID																								
SR 25	HIGHLANDS	434986-1-52-01																								

THE OFFICIAL RECORD OF THIS SHEET IS THE ELECTRONIC FILE DIGITALLY SIGNED AND SEALED UNDER RULE 61G15-23.004, F.A.C.

POLE DATA

LEGEND:



Proposed light pole with 210 watt LED luminaire. Designed for Type II, Short, B3-U0-G3, 4000K CCT and wired for 120 volt operation. Includes upright skirt. Shoulder mounted aluminum pole with 0° tilt, 35 ft. mounting height and 8 ft. arm. Use MGLED curve LTL24013-2P21 (MGLED_5_4_5K_AX_M_L_X_X_US.ies) or equal. Symbol includes pole, arm, fixture, foundation, slab, pull box, and pole cable distribution system. For non-standard slabs see slab detail on this sheet.

715-4-12 715-500-1 635-2-11



Proposed light pole with 210 watt LED luminaire. Designed for Type II, Short, B3-U0-G3, 4000K CCT and wired for 120 volt operation. Includes upright skirt. Shoulder mounted aluminum pole with 0° tilt, 35 ft. mounting height and 8 ft. arm. Use MGLED curve LTL24013-2P21 (MGLED_5_4_5K_AX_M_L_X_X_US.ies) or equal. Symbol includes pole, arm, fixture, foundation, pull box, and pole cable distribution system.

715-4-12 715-500-1 635-2-11



Electrical service disconnect with meter, 120 volt, see lighting plan for location. Electrical service provider is Duke Energy. Symbol includes service and service pole.

639-1-122 641-2-12



Lighting pull box with concrete slab.

635-2-11

2" directional bore conduit (includes spare) with conductors as shown in plans.

630-2-12 715-1-12

2" open trench conduit with conductors as shown in plans.

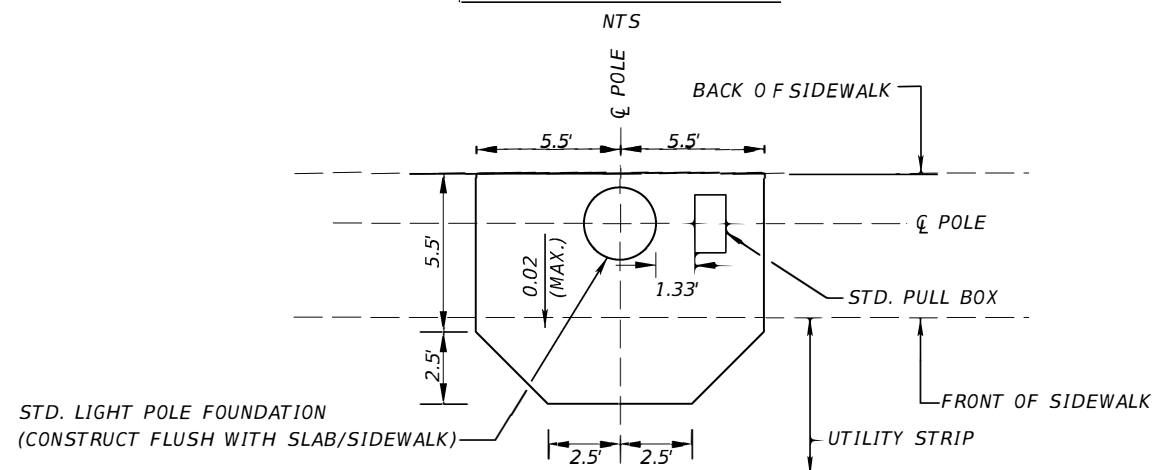
630-2-11 715-1-12

SIGNALIZED INTERSECTION LIGHTING DESIGN CRITERIA

Horizontal Average Initial Intensity 3.0 Foot Candles
 Uniformity Ratio Avg./Min. 4:1 Or Less
 Max./Min. 10:1 Or Less
 Vertical Average Initial Intensity ** 2.3 Foot Candles
 Design Wind Speed 120 MPH (Highlands County)

** Vertical illuminance for near side movement, right turn approach, and left turn approach. The vertical illumination is a target value and was not achievable for all traffic movements.

SPECIAL SLAB DETAIL



POLE NO.	CIRCUIT	STATION	POLE OFFSET	MOUNTING HEIGHT	POLE TYPE	ARM LENGTH	ARM CONFIGURATION
100	A-1	3568+37	73.51' Lt.	35'	STANDARD	8'	SINGLE
101	A-1	3568+35	25.72' Rt.	35'	STANDARD	8'	SINGLE
102	A-1	3568+58	94.22' Lt.	35'	STANDARD	8'	SINGLE
* 103	A-1	3568+71	74.08' Rt.	35'	STANDARD	8'	SINGLE
104	A-1	0+63	83.32' Lt.	35'	STANDARD	8'	SINGLE
105	A-1	0+77	100.34' Rt.	35'	STANDARD	8'	SINGLE
106	A-1	0+98	71.08' Rt.	35'	STANDARD	8'	SINGLE
107	A-1	1+05	47.56' Lt.	35'	STANDARD	8'	SINGLE

* REQUIRES SPECIAL SLAB. SEE DETAIL ON THIS SHEET.

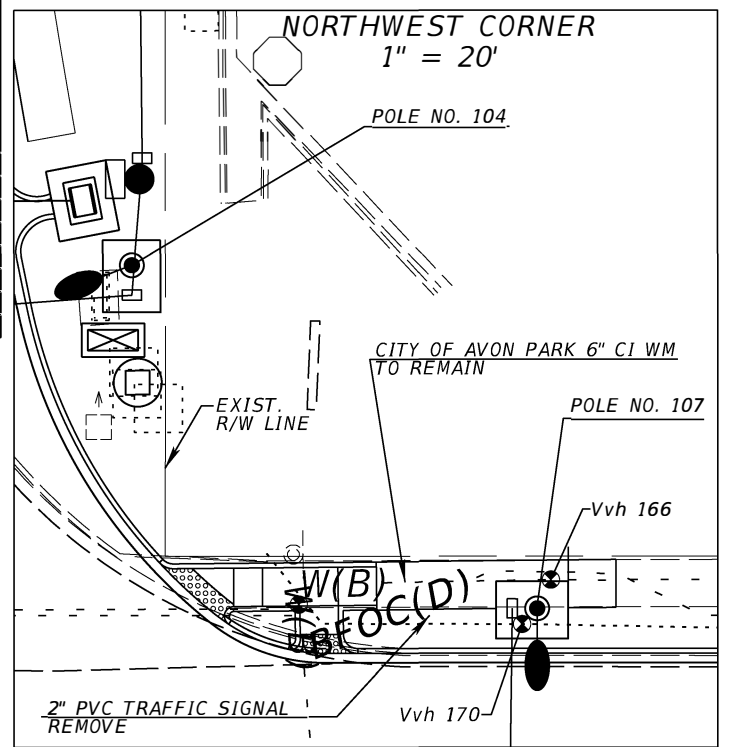
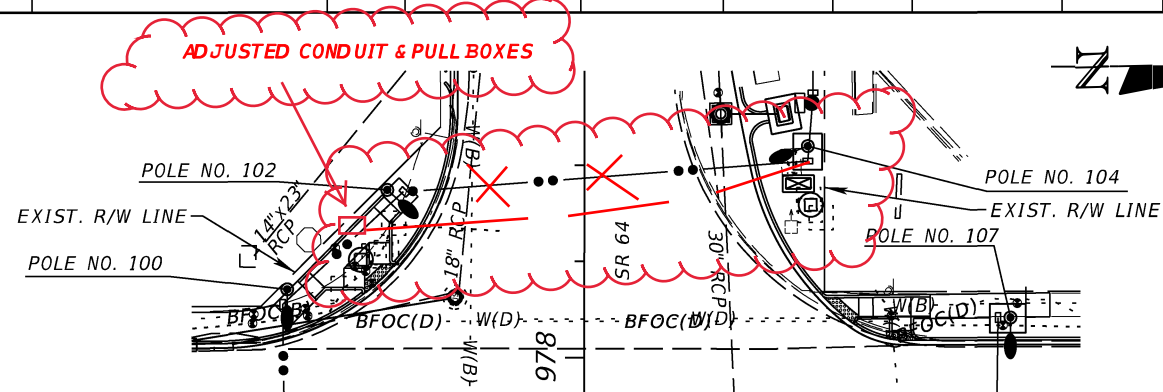
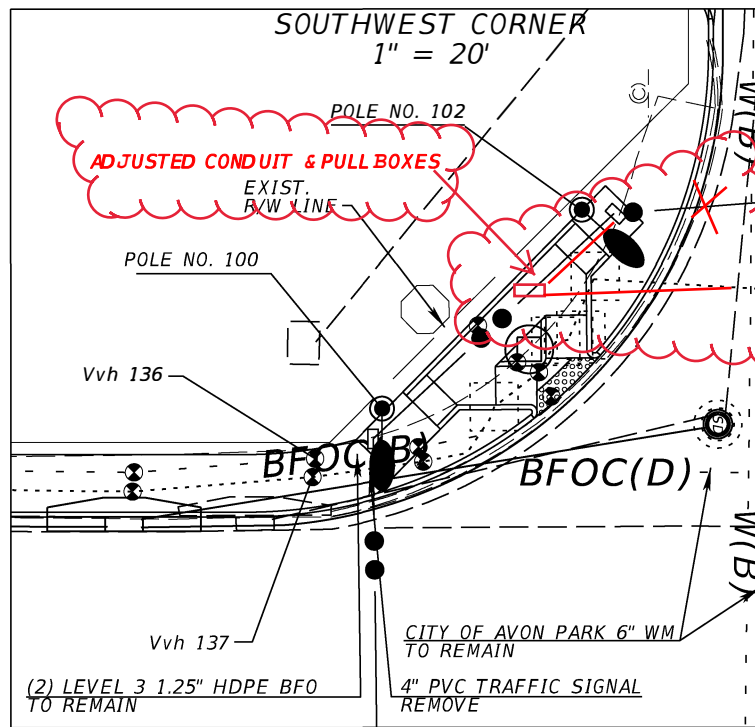
GENERAL NOTES

- CONTACT THE MAINTAINING AGENCY (CITY OF AVON PARK: JULIAN DELEON, 863-452-4403) TO CONFIRM POLE SEQUENCING NAME AND NUMBER.
- ELECTRICAL POWER SERVICE SHALL CONFORM TO THE LATEST EDITION OF DUKE ENERGY'S "REQUIREMENTS FOR ELECTRIC SERVICE AND METER INSTALLATION" AND INCLUDE ANY APPLICABLE FEES.
- POINT OF ELECTRIC SERVICE CONNECTION IS TO BE COORDINATED WITH DUKE ENERGY.
- SIGNALIZATION MAINTAINED BY HIGHLANDS COUNTY TRAFFIC OPERATIONS. POINT OF CONTACT EDDIE CARDONA (863-402-6536).

REVISIONS				Comprehensive Engineering Services, Inc. 201 S Orange Ave, Suite 1300 Orlando, FL 32801-3442 Certificate of Authorization No. 7862 Christopher Ryan Wence, P.E., License No. 77587	STATE OF FLORIDA DEPARTMENT OF TRANSPORTATION			POLE DATA, LEGEND, & GENERAL NOTES	SHEET NO. L-3
DATE	DESCRIPTION	DATE	DESCRIPTION		ROAD NO.	COUNTY	FINANCIAL PROJECT ID		
					SR 25	HIGHLANDS	434986-1-52-01		

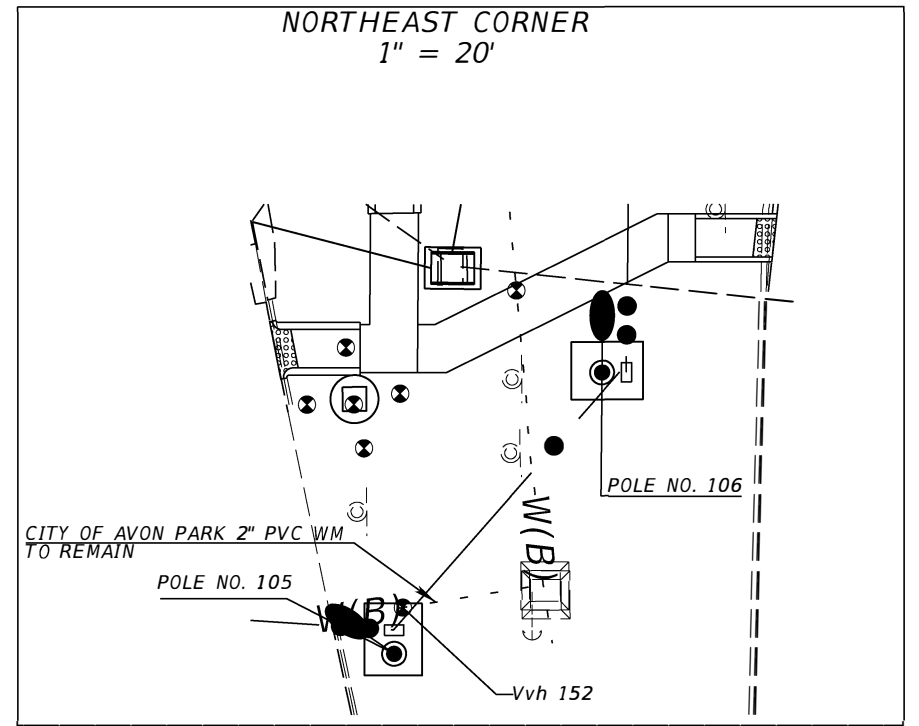
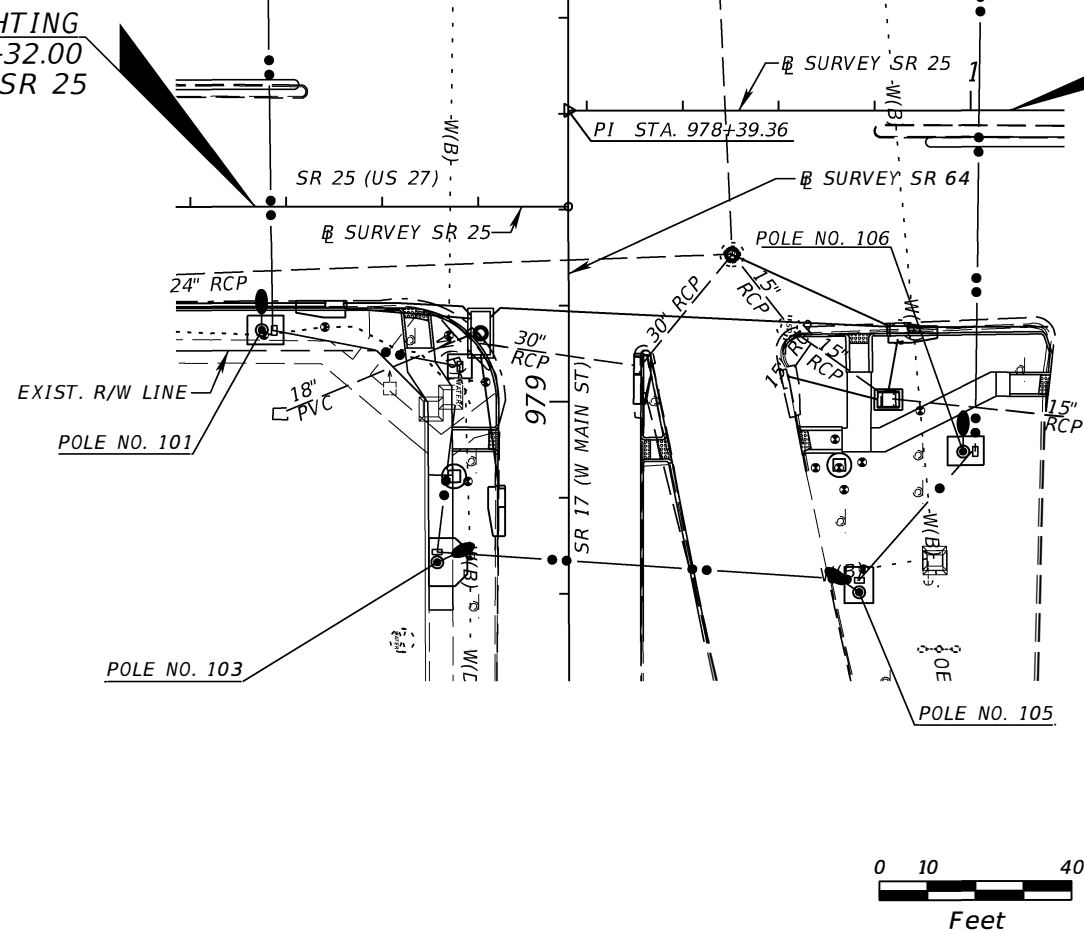
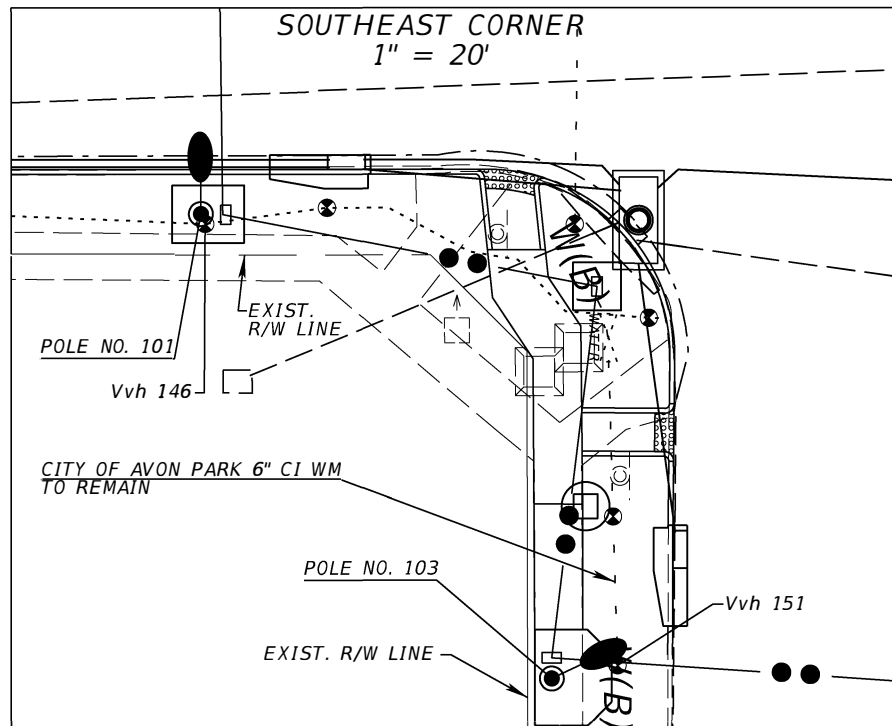
SUMMARY OF VERIFIED UTILITIES

Vvh #	UTILITY DESCRIPTION (Owner, type)	SIZE	MATERIALS	E and/or C			EXISTING GRD. EL.	TOP EL.	COMMENTS
				STATION	OFFSE T	LT /RT			
Vvh 136	Fiber Optic (x2)	1.25"	PE	977+91.10	68.88'	Rt	164.67'	160.67'	
Vvh 137	Traffic Signal (Grey)	4"	PVC	977+93.02	69.14'	Rt	164.62'	162.12'	
Vvh 146	Traffic Signal (Grey)	2"	PVC	3568+35.29	26.76'	Rt	165.05'	162.05'	
Vvh 151	Water Main	6"	Cast Iron	979+32.08	20.57'	Rt	165.13'	161.47'	
Vvh 152	Water	2"	PVC	979+34.93	61.36'	Lt.	164.89'	162.54'	
Vvh 166	Water Main	6"	Cast Iron	1+06.33	50.55'	Lt.	164.23'	161.03'	
Vvh 170	Traffic Signal (Grey)	2"	PVC	1+03.34	45.93'	Lt.	164.48'	161.81'	



BEGIN LIGHTING
STA. 3568+32.00
E SURVEY SR 25

END LIGHTING
STA. 1+08.00
E SURVEY SR 25



REVISIONS			
DATE	DESCRIPTION	DATE	DESCRIPTION

Comprehensive Engineering Services, Inc.
201 S Orange Ave, Suite 1300
Orlando, FL 32801-3442
Certificate of Authorization No. 7862
Christopher Ryan Wence, P.E., License No. 77587

STATE OF FLORIDA DEPARTMENT OF TRANSPORTATION		
ROAD NO.	COUNTY	FINANCIAL PROJECT ID
SR 25	HIGHLANDS	434986-1-52-01

UTILITY ADJUSTMENTS

SHEET NO.
L-5

THE OFFICIAL RECORD OF THIS SHEET IS THE ELECTRONIC FILE DIGITALLY SIGNED AND SEALED UNDER RULE 61G15-23.004, F.A.C.