

COMPONENTS OF CONTRACT PLANS SET
 ITS PLANS
 TRAFFIC OPERATIONS CENTER COMPONENT PLANS
 NETWORK SPLICE PLANS



INDEX OF ITS PLANS

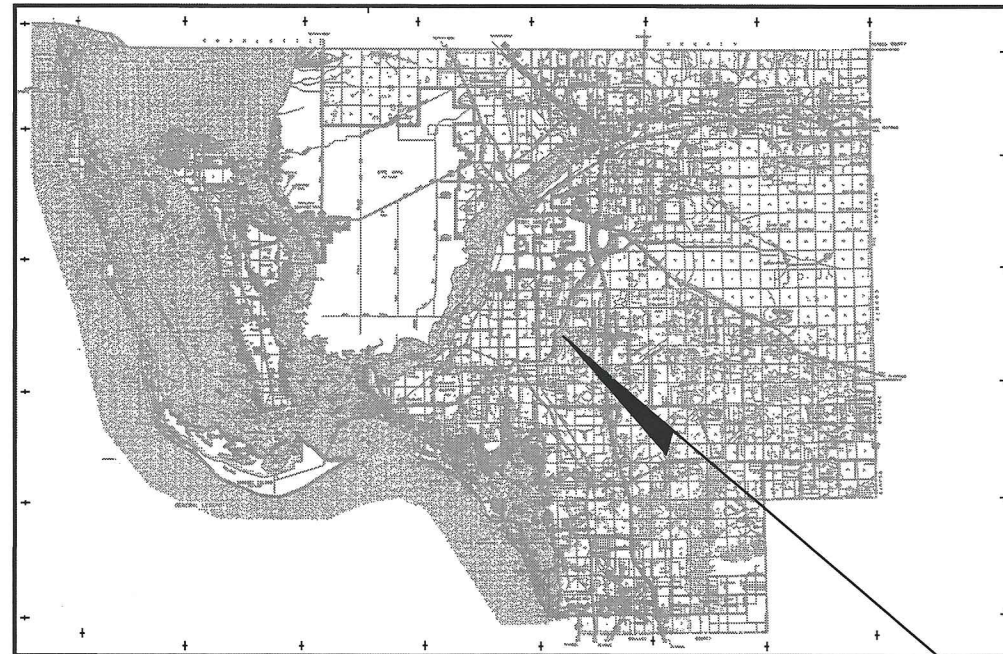
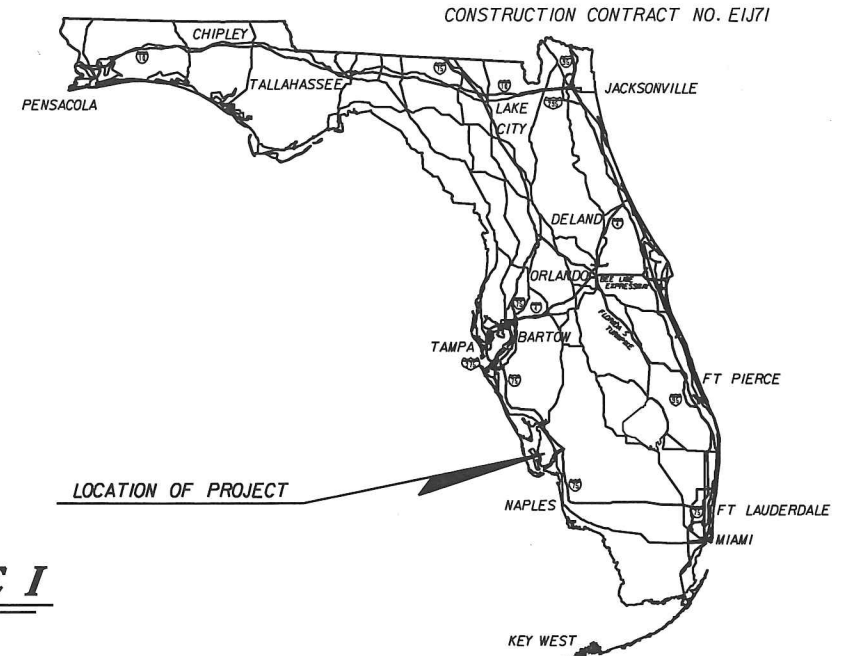
SHEET NO.	SHEET DESCRIPTION
IT-1	KEY SHEET
IT-2	SUMMARY OF PAY ITEM NUMBERS
IT-3	GENERAL NOTES
IT-4 TO IT-5	INTERSECTION CROSS REFERENCE (SIGNAL LOCATIONS)
IT-6	INTERCONNECT PROJECT LAYOUT
IT-7 TO IT-12	MVDS PROJECT LAYOUT
IT-13	INTERSECTION LISTING
IT-14	VEHICLE DETECTOR LISTING
IT-15 TO IT-93	SIGNALIZATION PLAN SHEETS
IT-94 TO IT-191	INTERCONNECT PLAN
IT-192 THRU IT-248	OMITTED SHEETS
IT-249 TO IT-251	TYPICAL MVDS AND CCTV INSTALLATION DETAILS
IT-252 TO IT-253	LOCAL CONTROLLER CABINET ASSEMBLY/HUB DETAIL
IT-254	SAMPLE TYPICAL NODE CABINET DETAILS
IT-255	NEMA ENCLOSURE DETAILS
IT-256	TYPICAL CCTV RURAL CROSS SECTION
IT-257	TYPICAL CCTV URBAN CROSS SECTION
IT-258	MVDS TYPICAL SECTION
IT-259	TYPICAL PULL BOX DETAIL
IT-260	TRAFFIC CONTROL GENERAL NOTES
IT-261	TRAFFIC CONTROL PLAN INTERSECTION DETAIL
IT-262 TO IT-263	EROSION CONTROL GUIDELINES
IT-264	SILT FENCE DETAIL
IT-265	EROSION AND SEDIMENT CONTROL DETAILS

STATE OF FLORIDA
 DEPARTMENT OF TRANSPORTATION

FINAL "AS-BUILT" PLANS

FINANCIAL PROJECT ID 412636-2-52-01
 (FEDERAL FUNDS)
 LEE COUNTY
 STATE ROAD NO. 45

ADVANCED TRAFFIC MANAGEMENT SYSTEM PHASE I



SHOP DRAWINGS
 TO BE SUBMITTED TO:
 W.T. BOWMAN, P.E.
 TINDALE-OLIVER AND ASSOCIATES, INC.

NOTE: THE SCALE OF THESE PLANS MAY
 HAVE CHANGED DUE TO REPRODUCTION.
 NOTE: THIS IS A LUMP SUM PROJECT.

SIGNALIZATION PLANS PREPARED BY:
 TINDALE-OLIVER & ASSOCIATES, INC.
 1000 N. ASHLEY DR - SUITE 400
 TAMPA, FL 33602
 CERTIFICATE OF AUTHORIZATION NO.: 5249
 WILLIAM "WT" BOWMAN, P.E. NO.: 69132

INTERCONNECT/MVDS PLANS PREPARED BY:
 FALLER, DAVIS & ASSOCIATES, INC.
 258 SOUTHWALL LANE - SUITE 410
 MAITLAND, FL 32751
 CERTIFICATE OF AUTHORIZATION NO.: 5864
 KEVIN R. CAREY, P.E. NO.: 61635

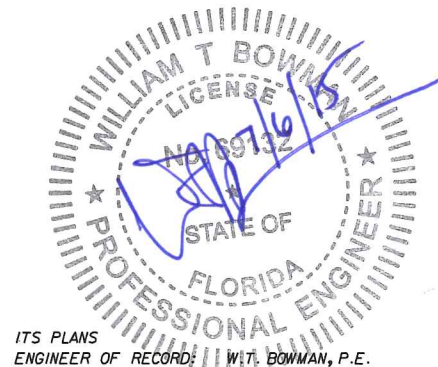
SPLICE DIAGRAMS PREPARED BY:
 ATA YORSUCU
 16359 REDINGTON DRIVE
 REDINGTON BEACH, FL 33708

STRUCTURAL PLANS PREPARED BY:
 FLORIDA BRIDGE & TRANSPORTATION
 633 DARTMOUTH STREET
 ORLANDO, FL 32804
 CERTIFICATE OF AUTHORIZATION NO.: 26379
 MARK NIEDERMANN, P.E. NO.: 45957

THIS PROJECT WAS CONSTRUCTED IN SUBSTANTIAL
 COMPLIANCE WITH THESE PLANS AS PROVIDED
 BY THE ENGINEER OF RECORD. IF CHANGES WERE MADE,
 THESE CHANGES ARE INDICATED BY BLACK INK REVISION
 AND BEAR THE SEAL AND SIGNATURE OF THE
 RESPONSIBLE PROFESSIONAL ENGINEER.

Wayne Scott
 DATE: 7/10/2015

FOR PROJECT LIMITS
 SEE SHEETS IT-4 TO IT-6
 PROJECT LIMITS



ITS PLANS
 ENGINEER OF RECORD: W.T. BOWMAN, P.E.

P.E. NO.: 69132

FISCAL YEAR	SHEET NO.
13	IT-1

GOVERNING STANDARDS AND SPECIFICATIONS:
 FLORIDA DEPARTMENT OF TRANSPORTATION,
 DESIGN STANDARDS DATED 2010,
 AND STANDARD SPECIFICATIONS FOR ROAD AND
 BRIDGE CONSTRUCTION DATED 2010,
 AS AMENDED BY CONTRACT DOCUMENTS.

APPLICABLE DESIGN STANDARDS MODIFICATIONS:
 For Design Standards Modifications click on
 "Design Standards" at the following web site:
<http://www.dot.state.fl.us/rddesign/>

REVISIONS

PROJECT LENGTH IS BASED ON $\frac{1}{2}$ OF CONSTRUCTION

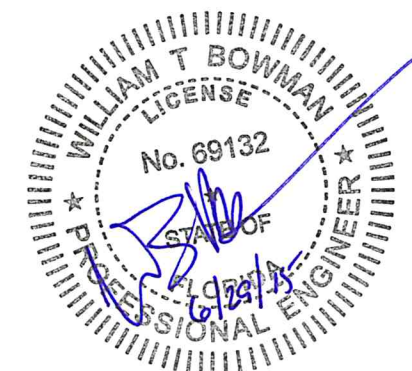
LENGTH OF PROJECT		
	LINEAR FEET	MILES
ROADWAY		
BRIDGES		
NET LENGTH OF PROJECT	165,850	31.411
EXCEPTIONS		
GROSS LENGTH OF PROJECT	165,850	31.411

KEY SHEET REVISIONS	
DATE	DESCRIPTION
4/16/2014	MODIFY KEY SHEET; NETWORK PLAN MOVED TO COMPONENT SET.
4/09/15	CHANGES DESCRIPTION FROM "CONTRACT PLANS" TO "FINAL AS-BUILT PLANS".

FDOT PROJECT MANAGER: MARY WILEY ELIODE JOSEPH, P.E.

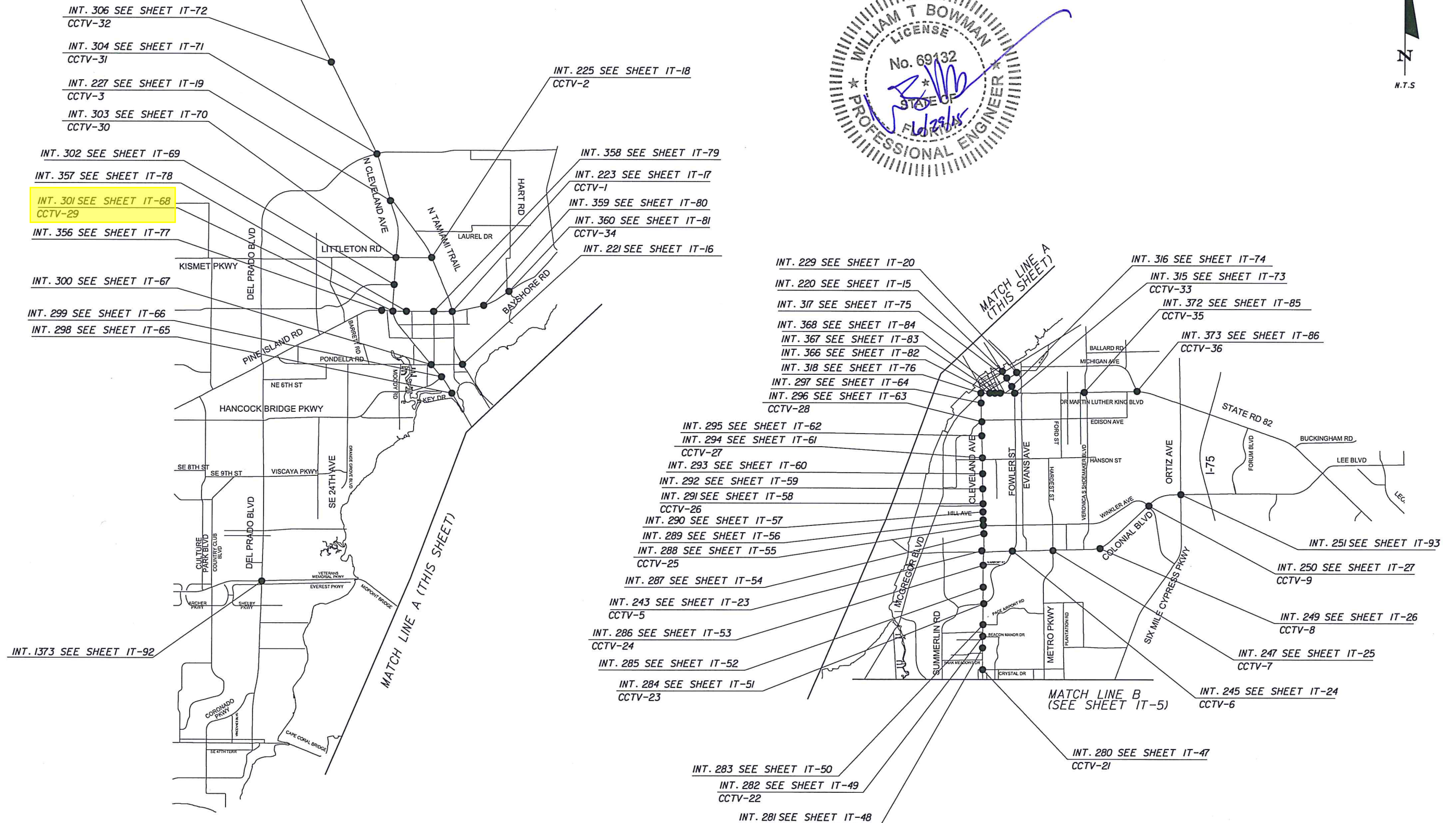
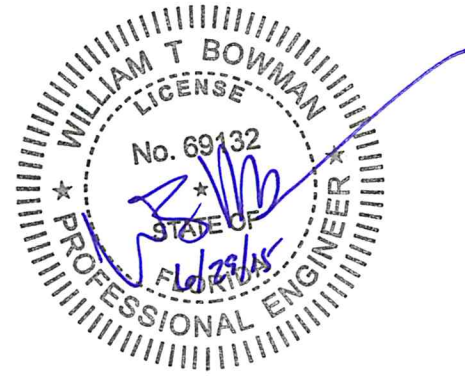
**SUMMARY OF PAY ITEM NUMBERS
(FOR INFORMATIONAL PURPOSES ONLY)**

PAY ITEM NO.	DESCRIPTION	UNIT
110-1-1	Clearing and Grubbing	LS
110-4	Removal of Existing Concrete Pavement	SY
120-1	Regular Excavation	CY
160-4	Type B Stabilization	SY
285-7-15	Optional Base	SY
334-1-13	Superpave Asphaltic Concrete	TN
337-7-5	Asphaltic Conc. Friction Course	TN
515-1-2	Pipe Handrail - Guiderail, Aluminum	LF
520-1-7	Concrete Curb, Type E (BOC)	LF
520-1-10	Concrete Curb, Type F (BOC)	LF
522-1	Concrete sidewalk, 4"	SY
555-1-1	Directional Bore, less than 6"	LF
570-1-1	Performance Turf	SY
604-3-1	Timing Implementation	PI
630-1-12	Signals-Conduit	LF
632-7-1	Signals-Cable within intersection	PI
635-1-11	Pull Box	EA
646-1-11	Aluminum Signal Pole (Pedestrian)	EA
653-191	Pedestrian Signal, LED, Count Down (1-way)	AS
653-192	Pedestrian Signal, LED, Count Down (2-way)	AS
660-2-106	Loop Assembly, Type F	AS
660-4-52	Vehicle Detection System, Video, Adjust/Modify	EA
663-74-40	Vehicle Detector Assembly, Relocate	EA
665-11	Pedestrian Detector	EA
665-111	Pedestrian Detector (Audible)	EA
670-5-111	Traffic Controller Assembly (Pre-emp)	AS
685-106	UPS, F&I	EA
685-306	UPS, Install Only	EA
690-20	Signal Ped. Assembly remove	EA
690-50	Controller Assem. Remove (Complete)	EA
690-50-1	Controller Assem. Remove (Controller unit only)	EA
690-70	Pedestrian Detector, Remove	EA
710-11-123	Pavement Marking, 12" White, Solid (Paint)	LF
710-11-125	Pavement Marking, 24" White, Solid (Paint)	LF
710-11-160	Thermoplastic, Standard, White, Message	EA
710-11-170	Thermoplastic, Standard, White, Arrow	EA
710-11-222	Pavement Marking, 8" Yellow, Solid (Paint)	LF
711-17	Pavement Marking Removal	SF
780-1-12	ITS Electrical Power	LF
782-1-11	ITS CCTV Camera	EA
783-1-121	ITS F.O. Cable, Underground	LF
783-1-123	Fiber Optic Cable, F&I, 46-96 Fibers	LF
783-2-31	ITS Fiber Optic Connection, Install, Splice	EA
783-2-32	ITS Fiber Optic Connection, Termination	EA
783-3-11	ITS Fiber Optic Connection Hardware, F&I, Splice Enclosure	EA
783-3-12	ITS Fiber Optic Connection Hardware, F&I, Splice Tray	EA
783-3-15	ITS Patch Panel, Preterminated	EA
783-3-16	ITS Patch Panel, Field Terminated	EA
783-3-18	ITS Patch Cord	EA
783-4-111	ITS Conduit, Aboveground	LF
783-4-112	ITS Conduit, Underground	LF
783-5-1	ITS Pull Box	EA
783-6-1	ITS Splice Box for Fiber Optics, F&I	EA
783-8-1	ITS Multi-Conductor Communication Cable, F&I	LF
784-1-1	ITS Ethernet Switch	EA
784-5-11	ITS Ethernet Hub	EA
785-1-13	ITS Pole	EA
785-2-122	ITS Field Cabinet with Sunshields	EA
786-1-11	ITS Vehicle Detection System, F&I, Microwave	EA

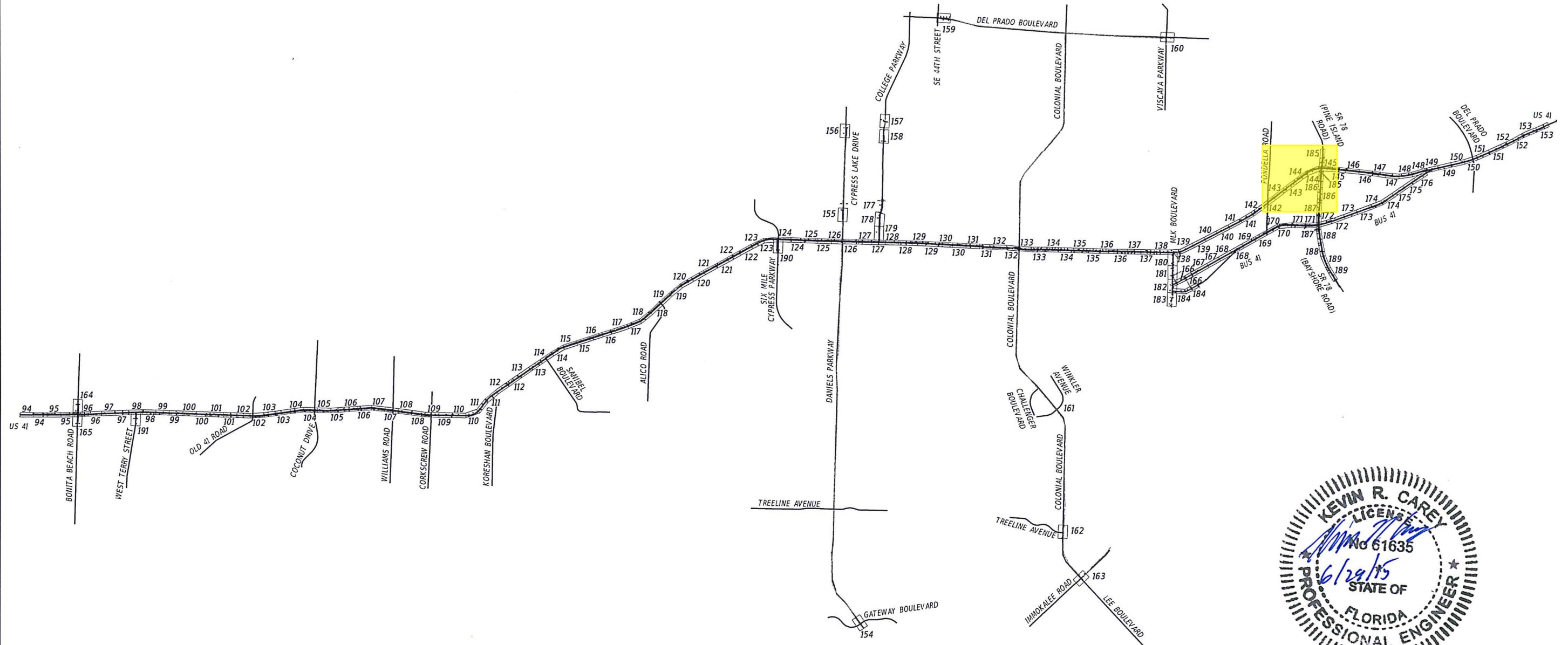


REVISIONS				TINDALE-OLIVER AND ASSOCIATES, INC. 1000 NORTH ASHLEY DRIVE, SUITE 400 TAMPA, FLORIDA 33602 813-224-8862 CERTIFICATE OF AUTHORIZATION NO.: 5249 WILLIAM "WT" BOWMAN, P.E. NO.: 69132	STATE OF FLORIDA DEPARTMENT OF TRANSPORTATION			SUMMARY OF PAY ITEM NUMBERS	SHEET NO. IT-2
DATE	DESCRIPTION	DATE	DESCRIPTION		ROAD NO.	COUNTY	FINANCIAL PROJECT ID		
4/09/15	CHANGED PAY ITEM NUMBERS FROM THERMOPLASTIC TO PAINT.				VARIES	LEE	4I2636-2-52-0I		

CHARLOTTE COUNTY

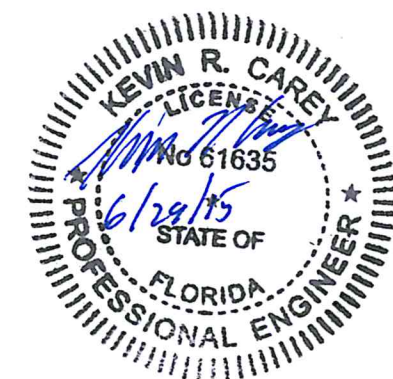


REVISIONS				TINDALE-OLIVER AND ASSOCIATES, INC. 1000 NORTH ASHLEY DRIVE, SUITE 400 TAMPA, FLORIDA 33602 813-224-8862 CERTIFICATE OF AUTHORIZATION NO.: 5249 WILLIAM "WT" BOWMAN, P.E. NO.: 69132	STATE OF FLORIDA DEPARTMENT OF TRANSPORTATION			INTERSECTION CROSS REFERENCE (SIGNAL LOCATIONS)	SHEET NO. IT-4
DATE	DESCRIPTION	DATE	DESCRIPTION		ROAD NO.	COUNTY	FINANCIAL PROJECT ID		
					VARIES	LEE	412636-2-52-01		



LEGEND:

94 SHEET NO. (IT-XX)



REVISIONS				<i>Faller, Davis & Associates, Inc.</i> 258 SOUTHWALL LANE - SUITE 410 MAITLAND, FL 32751 CERTIFICATE OF AUTHORIZATION NO.: 5864 KEVIN R. CAREY, P.E. NO.: 61635	STATE OF FLORIDA DEPARTMENT OF TRANSPORTATION			INTERCONNECT PROJECT LAYOUT (1)	SHEET NO.
DATE	DESCRIPTION	DATE	DESCRIPTION		ROAD NO.	COUNTY	FINANCIAL PROJECT ID		IT-6
					VARIES	LEE	412636-2-52-01		

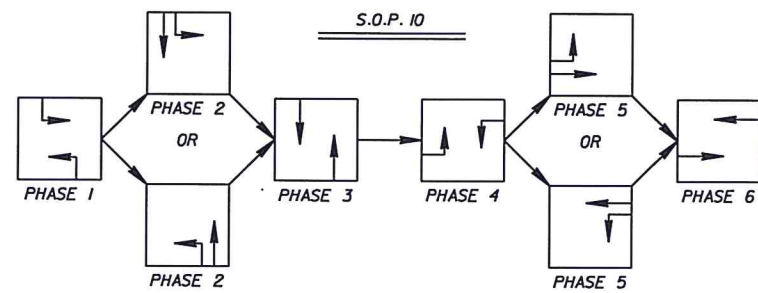
DETECTORS FOR LOOPS				
LOOP	NO. OF LOOPS	NO. OF NEW DETS.	NO. OF EXIST. DETS.	DELAY TIME (SEC)
L-				
L-				
L-				
L-	EXISTING TO REMAIN			
L-				
L-				
L-				
L-				
L-				

DELAY TIME IS INITIAL AND MAY REQUIRE FIELD ADJUSTING AS DIRECTED BY PROJECT ENGINEER.

CONTROLLER TIMINGS								
TIMING FUNCTION								
MOVEMENT NUMBER	1	2	3	4	5	6	7	8
MINIMUM GREEN								
EXTENSION								
MAXIMUM GREEN 1								
MAXIMUM GREEN 2								
YELLOW CLEARANCE								
ALL RED								
PEDESTRIAN WALK								
PEDESTRIAN CLEARANCE								
RECALL								

EXISTING TO REMAIN UNLESS OTHERWISE SHOWN

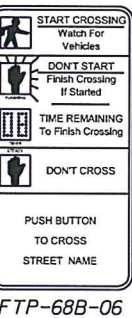
THIS SIGNAL IS PART OF A COORDINATED CORRIDOR. THE CONTRACTOR SHALL OBTAIN SIGNAL COORDINATION TIMINGS FROM LEE COUNTY AND PROGRAM THE CONTROLLER ACCORDINGLY. THE CONTRACTOR SHALL FURNISH LEE COUNTY A COPY OF THE MOST CURRENT SIGNAL PLAN (WITH ALL CHANGES MADE DURING CONSTRUCTION) AT LEAST 2 WEEKS PRIOR TO IMPLEMENTATION.



- NOTE:
- COMMUNICATION TO BE INSTALLED FOR THIS INTERSECTION.
 - COORDINATE VIDEO DETECTION ZONE ADJUSTMENT WITH FDOT AND LEE COUNTY.
 - HANDRAIL TO BE INSTALLED ALONG THE OUTER PERIMETER OF THE LANDING, EXCLUDING STREETSIDE.
 - ALL CONDUIT INSTALLED PER THE PLAN SHALL BE 2" UNLESS OTHERWISE NOTED. ALSO, ALL CONDUIT INSTALLED PER THE PLAN SHALL HAVE ONE CONDUIT RUN UNLESS OTHERWISE SHOWN.

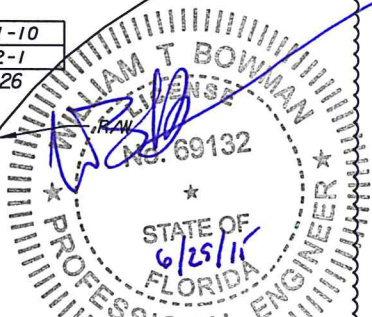
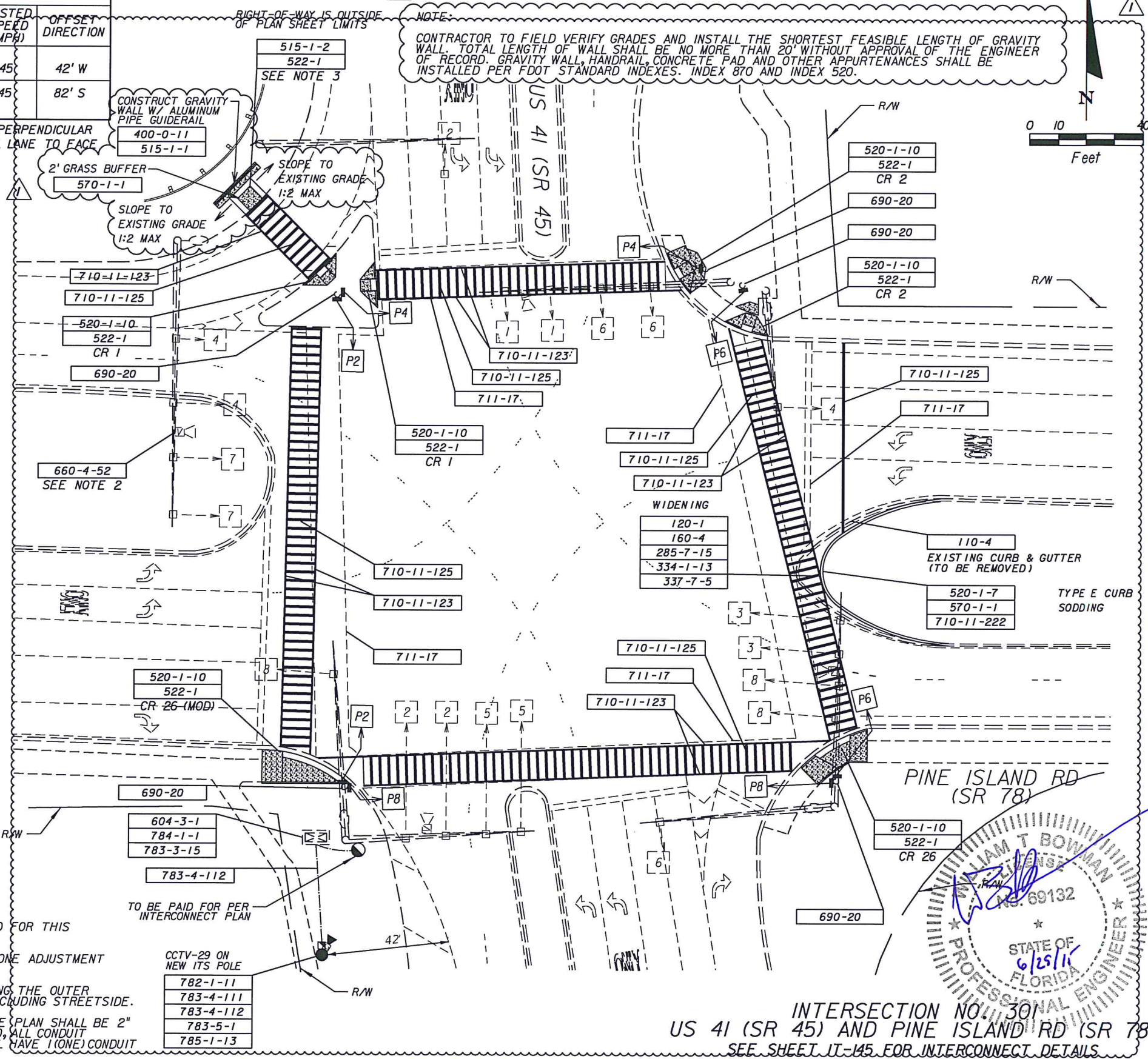
ITS POLE OFFSET DATA		
ROADWAY	POSTED SPEED (MPH)	OFFSET DIRECTION
US41 (SR45)	45	42' W
PINE ISLAND RD. (SR78)	45	82' S

DISTANCES MEASURED PERPENDICULAR FROM THROUGH TRAVEL LANE TO FACE OF POLE.



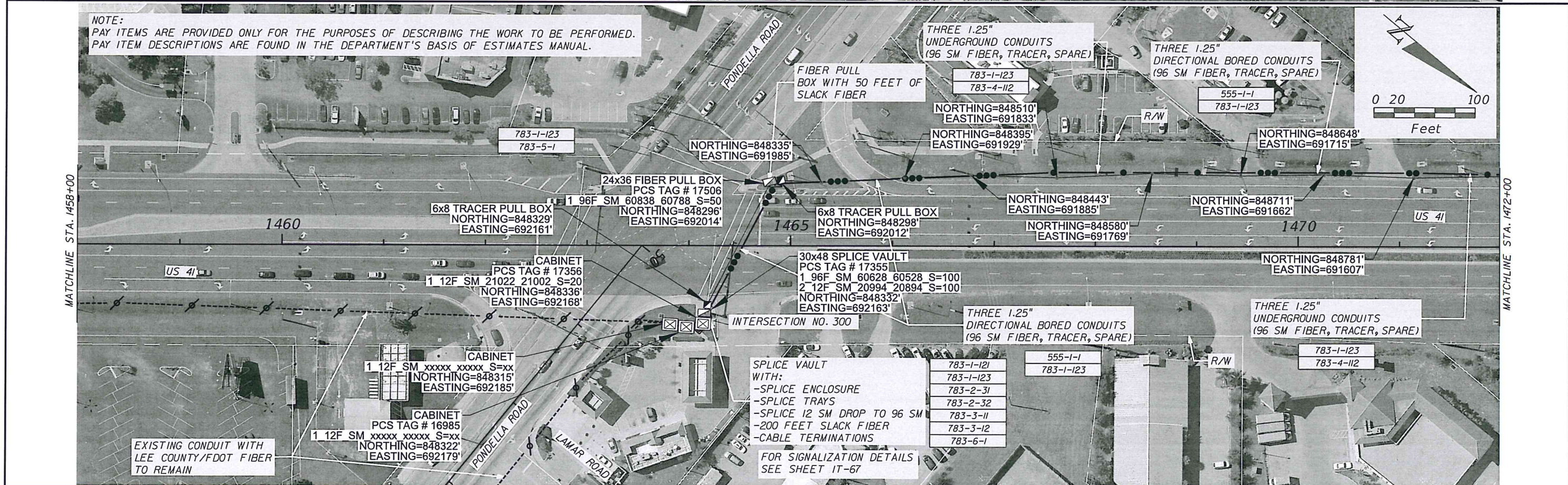
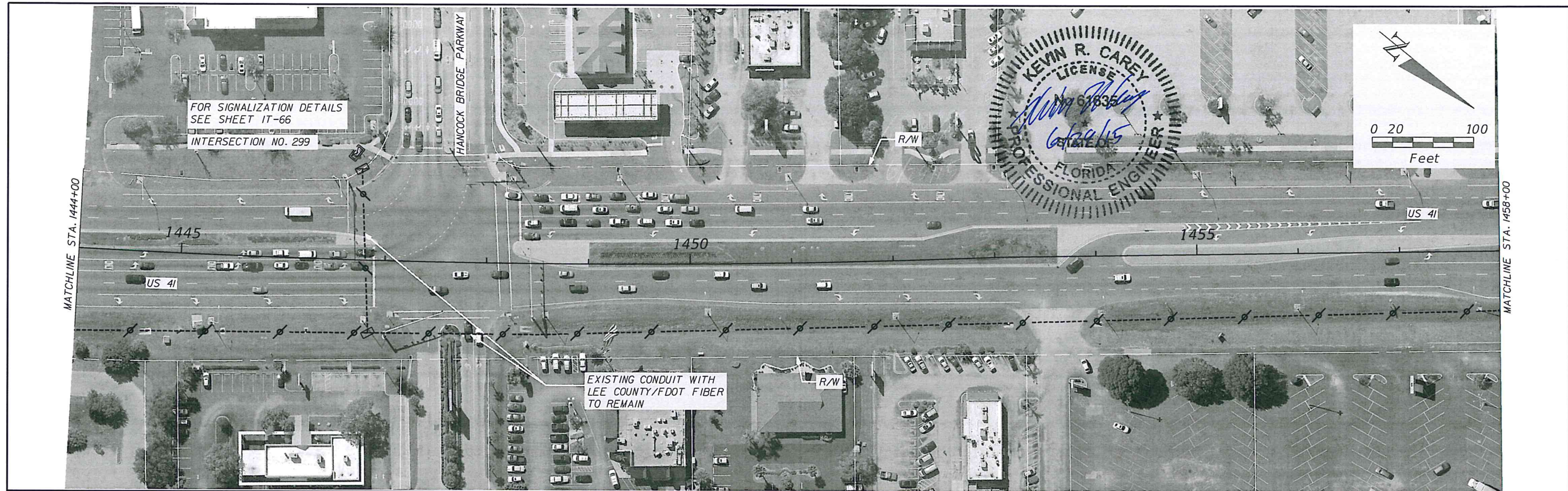
FTP-68B-06

PAY ITEMS ARE PROVIDED FOR THE PURPOSES OF DESCRIBING THE WORK TO BE PERFORMED. PAY ITEM DESCRIPTIONS ARE FOUND IN THE DEPARTMENT'S BASIS OF ESTIMATES MANUAL.

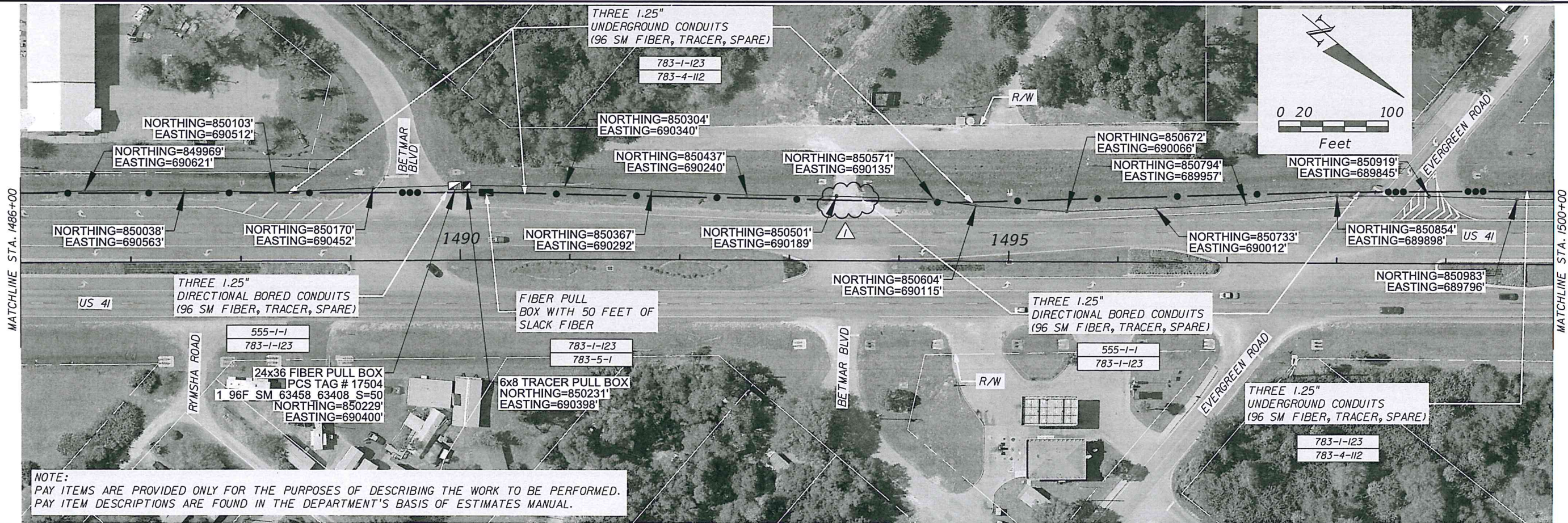
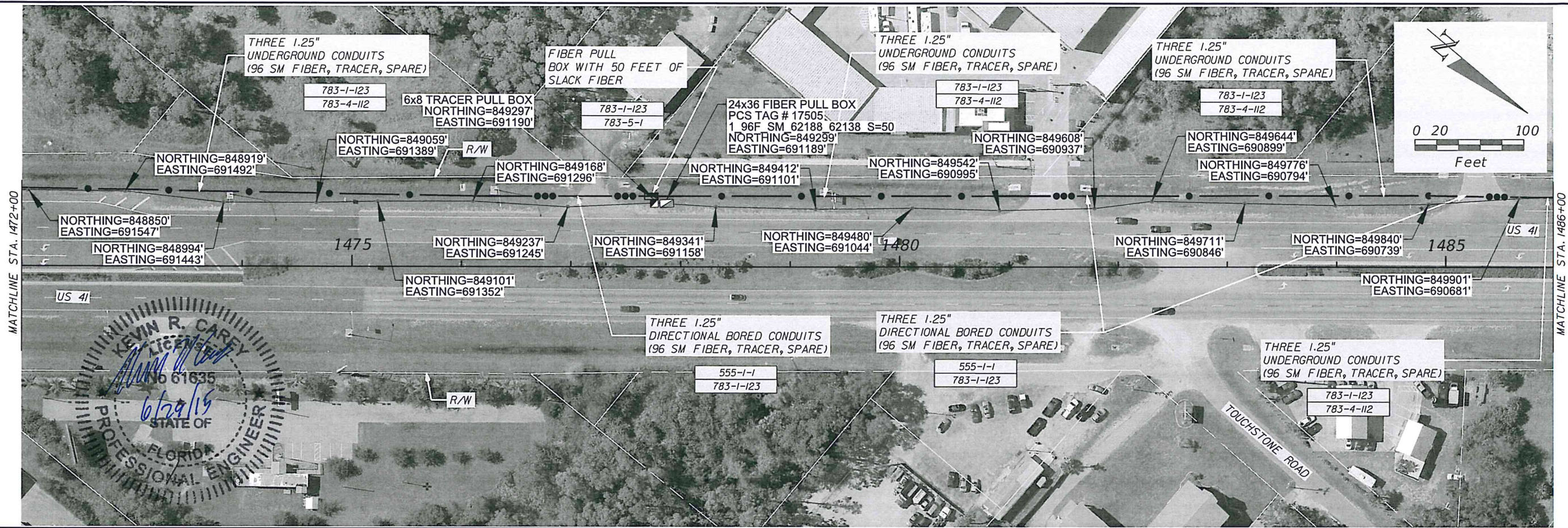


INTERSECTION NO. 301
US 41 (SR 45) AND PINE ISLAND RD (SR 78)
SEE SHEET IT-145 FOR INTERCONNECT DETAILS

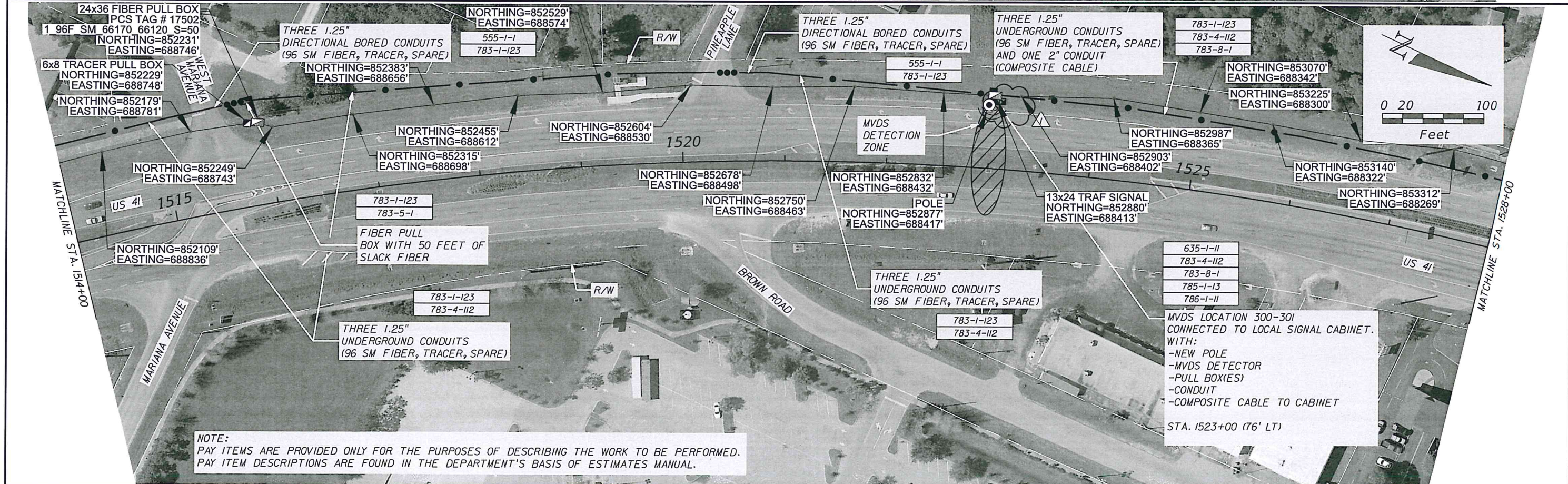
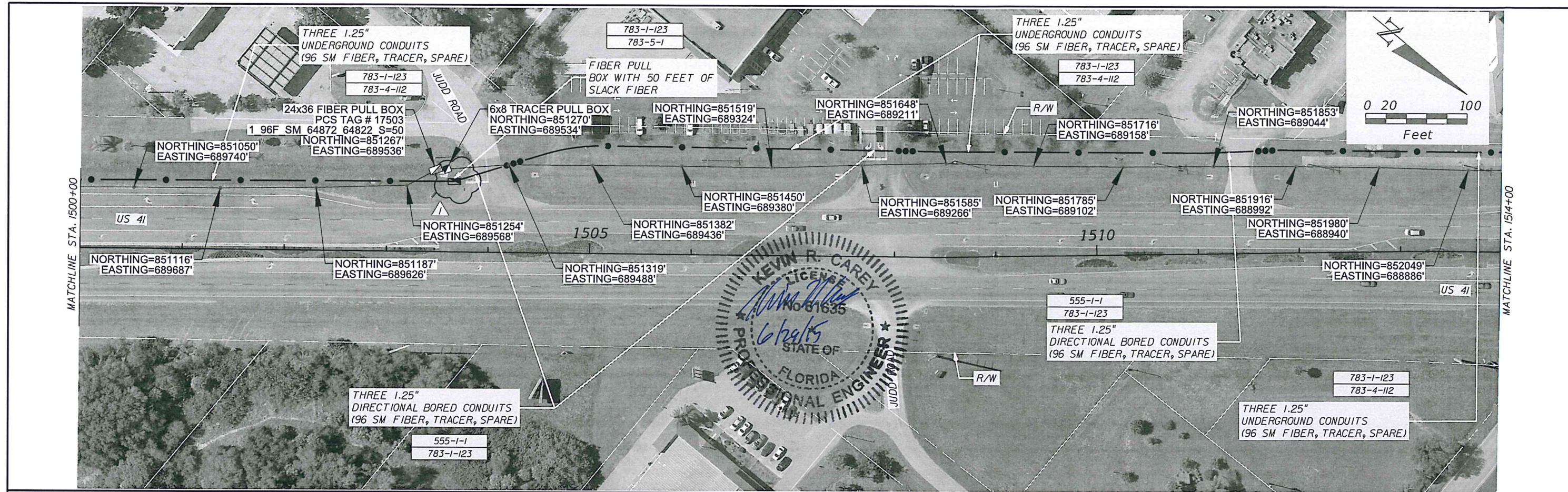
REVISIONS				TINDALE-OLIVER AND ASSOCIATES, INC. 1000 NORTH ASHLEY DRIVE, SUITE 400 TAMPA, FLORIDA 33602 813-224-8862 CERTIFICATE OF AUTHORIZATION NO.: 5249 WILLIAM "WT" BOWMAN, P.E. NO.: 69132	STATE OF FLORIDA DEPARTMENT OF TRANSPORTATION			SHEET NO. IT-68
DATE	DESCRIPTION	DATE	DESCRIPTION		ROAD NO.	COUNTY	FINANCIAL PROJECT ID	
04/07/14	ADDED 2' GRASS BUFFER AROUND PEDESTRIAN PAD, ADDED GRAVITY WALL WITH GUIDERAIL AND ADDED CONTRACTORS NOTE IN THE NORTHWEST CORNER OF THE INTERSECTION.			VARIES	LEE	412636-2-52-01	SIGNALIZATION PLAN SHEETS (54)	
04/09/15	UPDATED PAY ITEM NUMBERS FROM THERMOPLASTIC TO PAINT.							



REVISIONS				FALLER, DAVIS & ASSOCIATES, INC. 258 SOUTHALL LANE - SUITE 210 MAITLAND, FL 32751 CERTIFICATE OF AUTHORIZATION NO.: 5864 KEVIN R. CAREY, P.E. NO.: 61635	STATE OF FLORIDA DEPARTMENT OF TRANSPORTATION			INTERCONNECT PLAN (49)	SHEET NO. IT-142
DATE	DESCRIPTION	DATE	DESCRIPTION		ROAD NO.	COUNTY	FINANCIAL PROJECT ID		
					VARIES	LEE	412636-2-52-01		



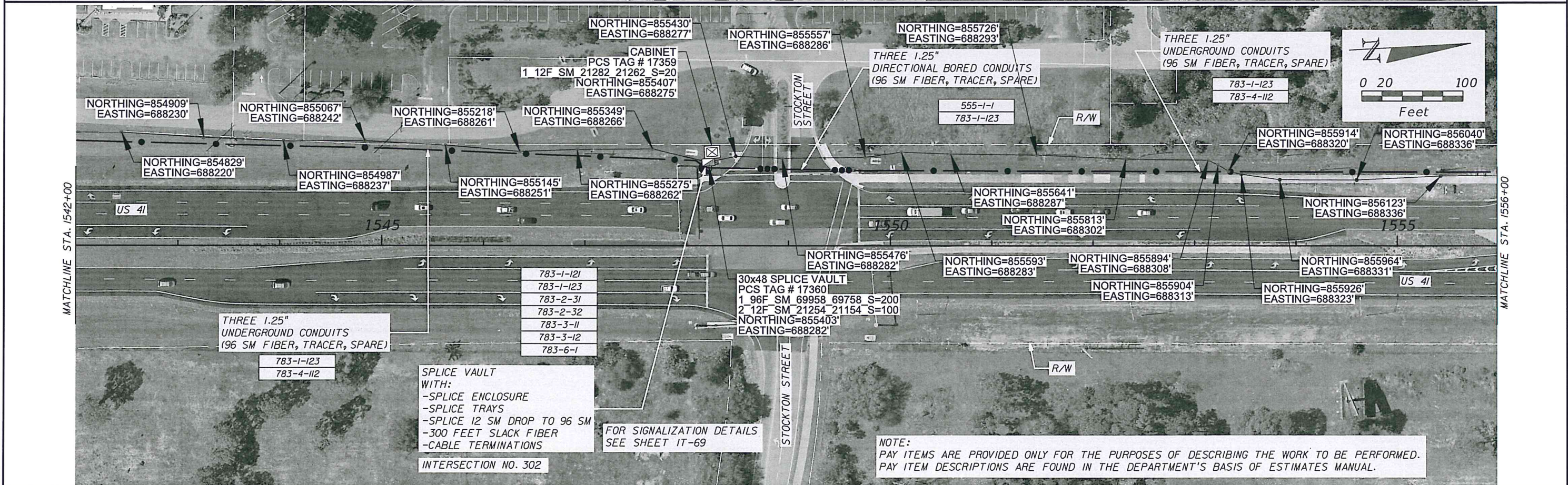
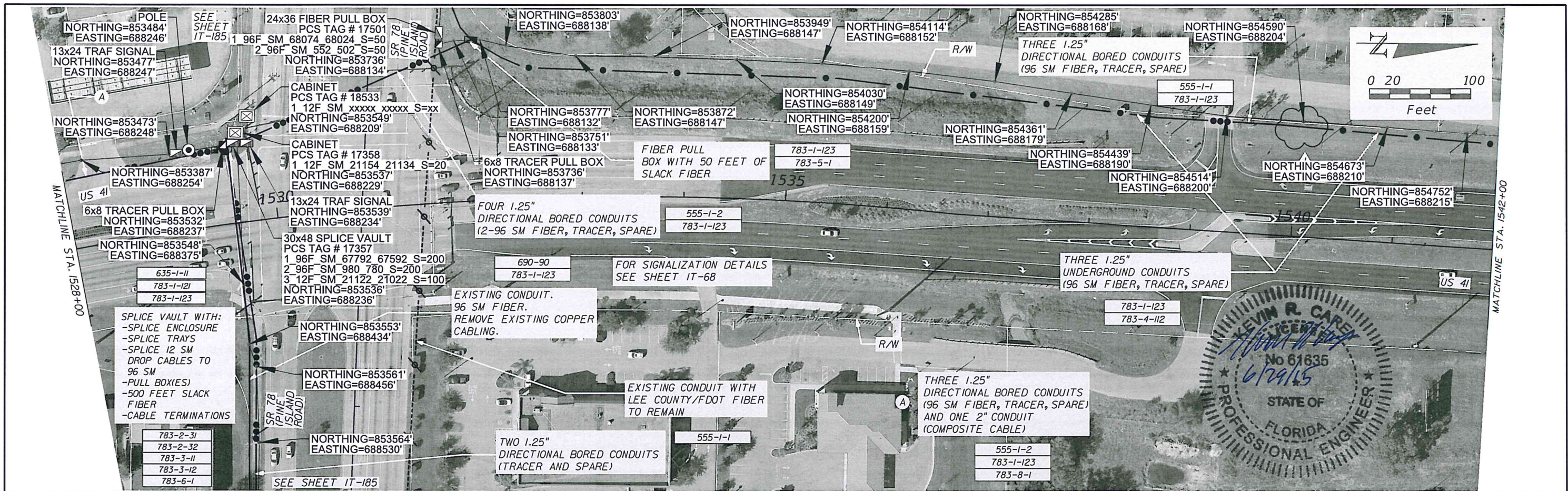
REVISIONS		DATE	DESCRIPTION	FALLER, DAVIS & ASSOCIATES, INC. 258 SOUTH HALL LANE - SUITE 210 MAITLAND, FL 32751 CERTIFICATE OF AUTHORIZATION NO.: 5864 KEVIN R. CAREY, P.E. NO.: 61635	STATE OF FLORIDA DEPARTMENT OF TRANSPORTATION			SHEET NO. IT-143
DATE	DESCRIPTION				ROAD NO.	COUNTY	FINANCIAL PROJECT ID	
4/09/15	⚠ CHANGED UNDERGROUND CONDUIT TO DIR. BORE CONDUIT				VARIES	LEE	412636-2-52-01	



NOTE:
 PAY ITEMS ARE PROVIDED ONLY FOR THE PURPOSES OF DESCRIBING THE WORK TO BE PERFORMED.
 PAY ITEM DESCRIPTIONS ARE FOUND IN THE DEPARTMENT'S BASIS OF ESTIMATES MANUAL.

REVISIONS				STATE OF FLORIDA DEPARTMENT OF TRANSPORTATION			SHEET NO. IT-144
DATE	DESCRIPTION	DATE	DESCRIPTION	ROAD NO.	COUNTY	FINANCIAL PROJECT ID	
4/09/15	△ MOVED FIBER OPTIC PULL BOX 20' NW OF PROPOSED LOCATION; REMOVED FIBER OPTIC PULL BOX BY MVDS			VARIES	LEE	412636-2-52-01	

FALLER, DAVIS & ASSOCIATES, INC.
 258 SOUTHALL LANE - SUITE 210
 MAITLAND, FL 32751
 CERTIFICATE OF AUTHORIZATION NO.: 5864
 KEVIN R. CAREY, P.E. NO.: 61635



REVISIONS				STATE OF FLORIDA DEPARTMENT OF TRANSPORTATION			SHEET NO. IT-145
DATE	DESCRIPTION	DATE	DESCRIPTION	ROAD NO.	COUNTY	FINANCIAL PROJECT ID	
4/09/15	REMOVED PROPOSED FIBER OPTIC PULL BOX			VARIES	LEE	412636-2-52-01	