

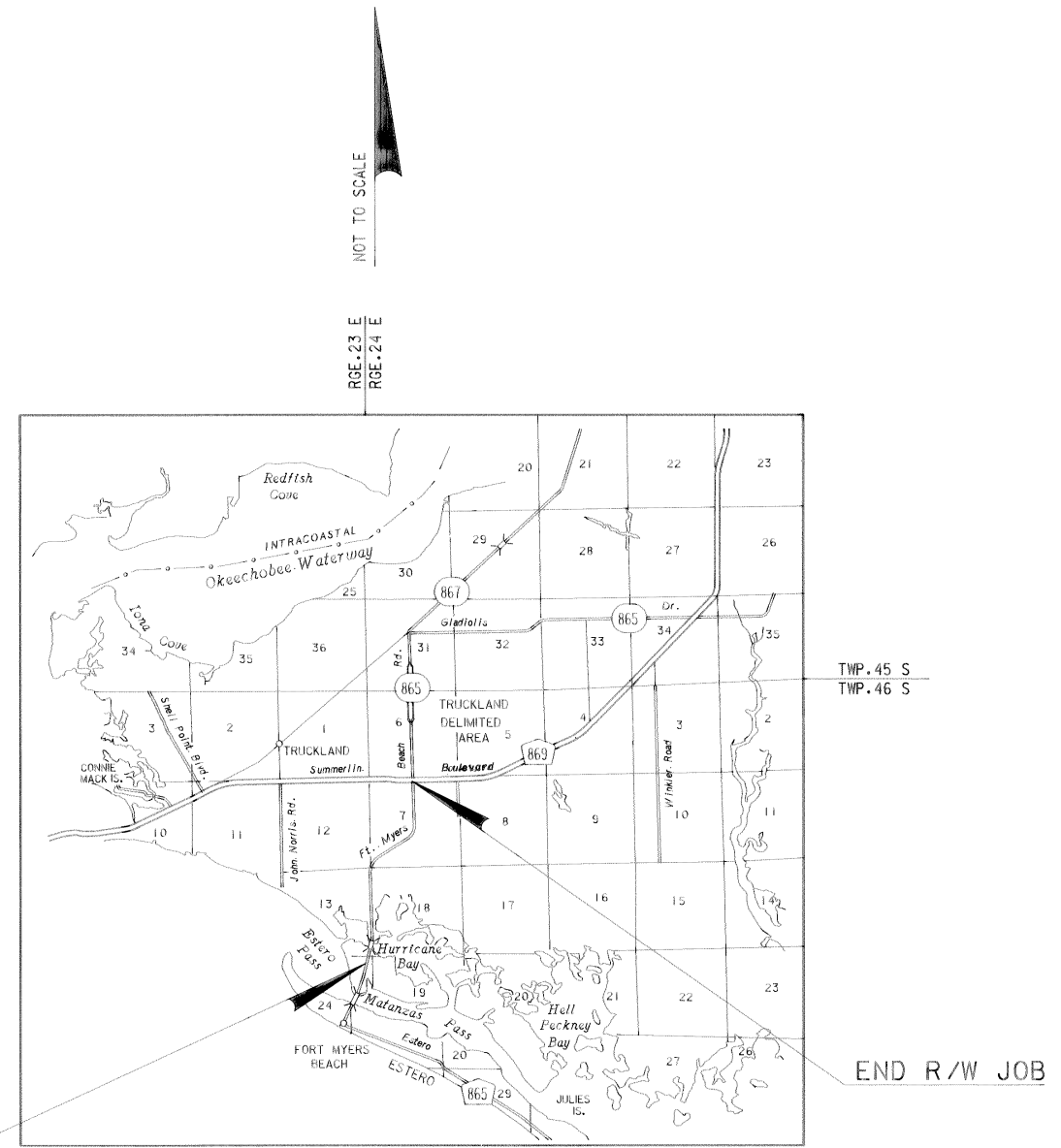
STATE OF FLORIDA  
DEPARTMENT OF TRANSPORTATION  
  
RIGHT OF WAY MAP  
  
STATE ROAD 865  
STATE PROJECT No. 12004-2505

LEGEND

- |   |  |
|---|--|
| <ul style="list-style-type: none"> <li>A.P.P.R.O. = AS PER PUBLIC RECORDS OF</li> <li>AC. = ACRE(S)</li> <li>AHD. = AHEAD</li> <li>AVE. = AVENUE</li> <li>B.O.S. = BEGINNING OF SURVEY</li> <li>BK. = BACK</li> <li>BLDG. = BUILDING</li> <li>BLVD. = BOULEVARD</li> <li>BUS. = BUSINESS</li> <li>C.B. = CHORD BEARING</li> <li>C.B.S. = CONCRETE BLOCK STRUCTURE</li> <li>C.C. = COUNTY COMMISSION</li> <li>C.I.R. = CAPPED IRON ROD</li> <li>C.M. = CONCRETE MONUMENT</li> <li>C.P. = CONCRETE PIPE</li> <li>C.R. = COUNTY ROAD</li> <li>CH. = CHAIN(S)</li> <li>CO. = COUNTY</li> <li>COM. = COMMERCIAL</li> <li>CONC. = CONCRETE</li> <li>COR. = CORNER</li> <li>CT. = COURT</li> <li>D. = DEGREE OF CURVATURE</li> <li>D.B. = DEED BOOK</li> <li>D.H. = DRILLED HOLE</li> <li>D.N.R. = DEPARTMENT OF NATURAL RESOURCES</li> <li>DR. = DRIVE</li> <li>E.O.S. = END OF SURVEY</li> <li>EXIST. = EXISTING</li> <li>ESM.T. = EASEMENT</li> <li>F.A. = FEDERAL AID</li> <li>F.D.O.T. = FLORIDA DEPARTMENT OF TRANSPORTATION</li> <li>F.D.O.T. C.M. = 4"x4"x24" C.M. CAPPED WITH F.D.O.T. BRASS DISK</li> <li>F.K.A. = FORMERLY KNOWN AS</li> <li>FND. = FOUND</li> <li>GOV'T. = GOVERNMENT</li> <li>I.P. = IRON PIPE</li> <li>I.R. = IRON ROD</li> <li>INC. = INCORPORATED</li> <li>L. = LENGTH OF CURVE</li> <li>L/A. = LIMITED ACCESS</li> <li>L.O.C. = LIMITS OF CONSTRUCTION</li> <li>L.B. = LAND SURVEYING BUSINESS</li> <li>LN. = LANE</li> <li>LT. = LEFT</li> <li>LTD. = LIMITED</li> <li>MAINT. = MAINTAINED</li> <li>MON. = MONUMENT</li> <li>N/A. = NOT APPLICABLE</li> <li>N.T.S. = NOT TO SCALE</li> <li>No. = NUMBER</li> <li>O.R. = OFFICIAL RECORDS</li> <li>CORP. = CORPORATION</li> <li>S.R.D. = STATE ROAD DEPARTMENT</li> </ul> | <ul style="list-style-type: none"> <li>P.B. = PLAT BOOK</li> <li>P.C. = POINT OF CURVATURE</li> <li>P.C.C. = POINT OF COMPOUND CURVATURE</li> <li>P.I. = POINT OF INTERSECTION</li> <li>P.K. = PARKER-KALON NAIL</li> <li>P.L.S. = PROFESSIONAL LAND SURVEYOR</li> <li>P.O.C. = POINT ON CURVE</li> <li>P.O.L. = POINT ON LINE</li> <li>P.O.T. = POINT ON TANGENT</li> <li>P.P. = POWER POLE</li> <li>P.R.C. = POINT OF REVERSE CURVATURE</li> <li>P.R.M. = PERMANENT REFERENCE MONUMENT</li> <li>P.T. = POINT OF TANGENCY</li> <li>PG. = PAGE</li> <li>PL. = PLACE</li> <li>PRELIM. = PRELIMINARY</li> <li>PROJ. = PROJECT</li> <li>R. = RADIUS</li> <li>R.L.S. = REGISTERED LAND SURVEYOR</li> <li>R.R.SPK. = RAILROAD SPIKE</li> <li>R/W. = RIGHT OF WAY</li> <li>RD. = ROAD</li> <li>RD/W. = ROADWAY</li> <li>RES. = RESIDENCE</li> <li>RGE. = RANGE</li> <li>RR. = RAILROAD</li> <li>RT. = RIGHT</li> <li>SQ. FT. = SQUARE FEET</li> <li>S.R. = STATE ROAD</li> <li>S.W. = SIDEWALK</li> <li>SEC. = SECTION</li> <li>ST. = STREET</li> <li>STA. = STATION</li> <li>STY. = STORY</li> <li>T. = TANGENT LENGTH OF CURVE</li> <li>T-C. = TANGENT TO CURVE</li> <li>TERR. = TERRACE</li> <li>TWP. = TOWNSHIP</li> <li>T.I.I.T.F. = TRUSTEES OF THE INTERNAL IMPROVEMENT TRUST FUND</li> <li>W.P.I. = WORK PROGRAM ITEM</li> <li>W/. = WITH</li> <li>X. = EASTING STATE PLANE COORDINATE VALUE</li> <li>Y. = NORTHING STATE PLANE COORDINATE VALUE</li> <li>⊖. = BASELINE</li> <li>⊙. = CENTERLINE</li> <li>⊘. = PROPERTY LINE</li> <li>Δ. = DELTA (CENTRAL ANGLE)</li> <li>(C) = CALCULATED DATA</li> <li>(D) = DEED DATA</li> <li>(F) = FIELD DATA</li> <li>(P) = PLAT DATA</li> </ul> |
|---|--|

GENERAL NOTES

1. BEARING BASIS IS THE FLORIDA STATE PLANE COORDINATE SYSTEM, WEST ZONE.
2. PROPERTY BOUNDARIES DETERMINED FROM FIELD SURVEY, PLATS OF RECORD AND RECORD TITLE.
3. UNDERGROUND ENCROACHMENTS, IF ANY, NOT LOCATED.
4. RIGHT OF WAY MONUMENTS TO BE SET AFTER CONSTRUCTION OF PROJECT IS COMPLETE.
5. ONLY FIXED IMPROVEMENTS PERTINENT TO THE PARCELS TO BE ACQUIRED ARE SHOWN. FIXED INTERIOR IMPROVEMENTS NOT LOCATED.
6. THIS RIGHT OF WAY MAP WAS PREPARED FOR THE PURPOSE OF PREPARING LEGAL LAND DESCRIPTIONS, ACQUISITION DOCUMENTS, MONUMENTATION, PROPERTY MANAGEMENT AND AS AN AID IN THE APPRAISAL OF THE RIGHT OF WAY REQUIRED FOR TRANSPORTATION FACILITIES.  
**THIS MAP IS NOT A SURVEY.**
7. THIS RIGHT OF WAY MAP IS SUPPORTED BY A RIGHT OF WAY CONTROL SURVEY DATED JUNE 30, 1989, PREPARED UNDER THE RESPONSIBLE CHARGE OF J.R. BRANDENBURG, FLORIDA REGISTERED LAND SURVEYOR, No.2995. CERTIFIED COPIES OF THIS SURVEY ARE FILED OF RECORD IN THE DISTRICT ONE (1) OFFICE IN BARTOW, FLORIDA.



UTILITIES

- UNITED TELEPHONE SYSTEMS ..... TELEPHONE
- FLORIDA POWER AND LIGHT ..... ELECTRIC
- FLORIDA CITIES WATER ..... WATER
- PALMER CABLE TV ..... TV CABLE
- LEE COUNTY UTILITIES ..... SANITARY SEWER
- STATE OF FLORIDA ..... STORM SEWER

COVER SHEET  
S.R. 865 (SAN CARLOS BLVD.)  
FROM MAIN STREET  
TO SUMMERLIN BLVD.

FLORIDA DEPARTMENT OF TRANSPORTATION RIGHT OF WAY SURVEYING AND MAPPING			
<b>RIGHT OF WAY MAP</b>			
STATE ROAD NO.	<b>865</b>	LEE COUNTY	
BY	DATE	APPROVED BY	DATE
PRELIM. RRW	04/02/90	<i>J.R. Brandenburg</i>	11-14-91
FINAL RRW	04/02/90		
CHECKED Q.A.	07/23/91	DISTRICT SECRETARY	
MAPS PREPARED BY		FIELD BOOK NO'S.	
BHR OF TAMPA, INC.		029682	
W.P.I. NO.	1114600	SCALE	N/A
SECTION	12004-2505	SHEET	1

SEE SHEET 4 SEE SHEET 5 SEE SHEET 6 SEE SHEET 7 SEE SHEET 8 SEE SHEET 9 SEE SHEET 10 SEE SHEET 11 SEE SHEET 12 SEE SHEET 13 SEE SHEET 14



BEGIN R/W JOB  
I2004-2505  
S.R. 865 (SAN CARLOS BLVD.)  
STA. 105+00.00  
X = 515471.533  
Y = 773345.962

SAN CARLOS BAY  
SAN CARLOS-ON-THE-GULF  
BEACH SECTION  
PLAT BOOK 6, PAGE 6  
LEE COUNTY, FL.

SAN CARLOS-ON-THE-GULF  
BEACH SECTION  
PLAT BOOK 6, PAGE 6  
LEE COUNTY, FLORIDA

SPORTSMAN COVE YACHT  
AND BOAT CLUB  
A CONDOMINIUM  
CONDO. BOOK 8, PAGE 270  
LEE COUNTY, FLORIDA

© SURVEY  
Curve No. 1  
PI Sta. 125+64.76  
X = 515,974.006  
Y = 775,348.649  
Δ = 15°25'31" Lt.  
D = 04°00'00"  
T = 193.99'  
L = 385.63'  
R = 1432.39'  
PC Sta. 123+70.77  
PT Sta. 127+56.40

© SURVEY  
Curve No. 2  
PI Sta. 172+51.56  
X = 515,864.303  
Y = 780,036.516  
Δ = 59°07'33" Rt.  
D = 05°00'00"  
T = 649.99'  
L = 1182.52'  
R = 1145.92'  
PC Sta. 166+01.57  
PT Sta. 177+84.09

© SURVEY  
Curve No. 3  
PI Sta. 203+36.34  
X = 518,573.580  
Y = 781,743.610  
Δ = 59°21'27" Lt.  
D = 05°00'00"  
T = 653.06'  
L = 1187.15'  
R = 1145.92'  
PC Sta. 196+83.28  
PT Sta. 208+70.43

**KEY MAP 'A'**  
S.R. 865 - (SAN CARLOS BLVD.)  
FROM MAIN STREET  
TO SUMMERLIN BLVD.  
PHOTO DATE 9/01/88

FLORIDA DEPARTMENT OF TRANSPORTATION RIGHT OF WAY SURVEYING AND MAPPING			
<b>RIGHT OF WAY MAP</b>			
STATE ROAD NO.	865	LEE COUNTY	
PRELIM.	RRW	4/2/90	1-14-91
FINAL	RRW	4/2/90	
CHECKED	R.A.	7/23/91	
BHR OF TAMPA, INC.		029682	
SECTION	I2004-2505	SHEET	2

TO BE ACQUIRED UNDER R/W JOB I2004-2507

1 36 TOWNSHIP 45 SOUTH RANGE 23 EAST 36 25  
 6 31 TOWNSHIP 45 SOUTH RANGE 24 EAST 31 30

RANGE 24 EAST  
 RANGE 24 EAST  
 TOWNSHIP 46 SOUTH  
 TOWNSHIP 45 SOUTH

SEE SHEET 15

FND. 5/8" I.R. & CAP  
 NW COR. NE 1/4  
 SECTION 12

(COR. TO COR.)  
 N 89°54'18" E  
 2651.97'(F)

1

FND. 5/8" I.R. & CAP  
 SEC. COR.

6

(COR. TO COR.)  
 N 89°05'03" E  
 2695.63'(F)

7

(COR. TO COR.)  
 N 01°15'04" W  
 2640.88'(F)

230

240

250

260

270

280

290

300

310

320

330

340

350

360

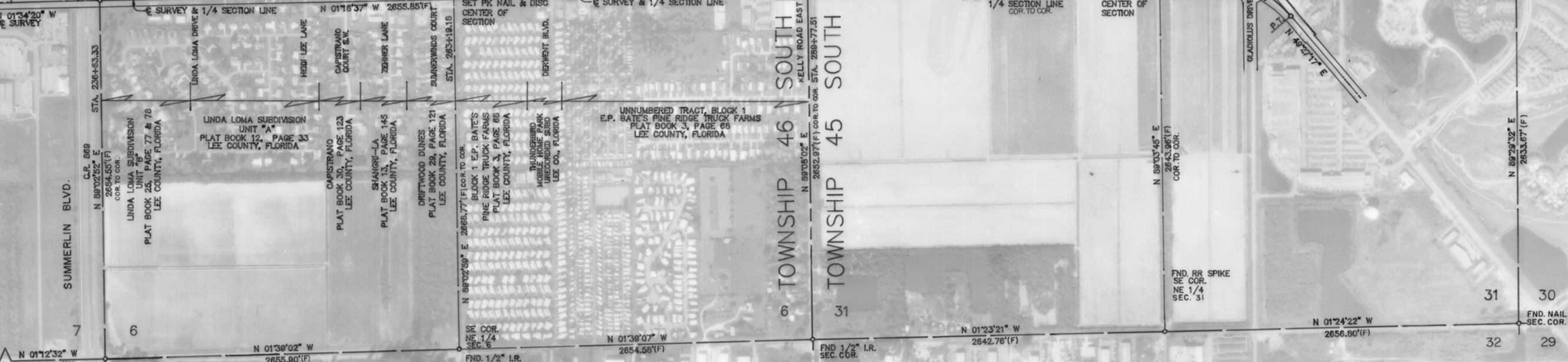
370

380

END R/W JOB  
 12004-2505  
 S.R. 865 (SAN CARLOS BLVD.)

P.I. STA. 236+63.33  
 $\Delta = 00°15'43"$  RL  
 SET PK NAIL & BRASS  
 DISC (SW COR. SE 1/4 SEC. 6)  
 X = 518,479.033  
 Y = 785,188.275

P.I. STA. 289+77.51  
 $\Delta = 00°18'36"$  RL  
 FOUND RR SPIKE  
 (NW COR. NE 1/4 SEC. 6)  
 X = 518,357.515  
 Y = 790,501.088



Q SURVEY  
 Curve No. 4  
 PI Sta. 323+30.20  
 X = 518,261.741  
 Y = 793,852.388  
 $\Delta = 51°05'30"$  Rt.  
 D = 06°30'00"  
 T = 421.31'  
 L = 786.03'  
 R = 881.47'  
 PC Sta. 319+08.89  
 PT Sta. 326+94.92

**KEY MAP 'B'**  
 S.R. 865 - (SAN CARLOS BLVD.)  
 FROM MAIN STREET  
 TO SUMMERLIN BLVD.

PHOTO DATE 9/01/88

FLORIDA DEPARTMENT OF TRANSPORTATION  
 RIGHT OF WAY SURVEYING AND MAPPING

**RIGHT OF WAY MAP**

STATE ROAD NO. 865 LEE COUNTY

BY DATE APPROVED BY DATE

PRELIM. RRW 4/2/90 11-14-91

FINAL ABW 4/2/90 W.P. Tufano

CHECKED G.A. 7/23/91 DISTRICT SECRETARY

MAPS PREPARED BY BHR OF TAMPA, INC. 029682

W.P.I. NO. 1114600 SCALE 1" = 400'

SECTION I2004-2505 SHEET 3

SAN CARLOS-ON-THE-GULF  
BEACH SECTION  
PLAT BOOK 6, PAGE 6  
LEE COUNTY, FLORIDA

SEC. 24, TWP. 46 S., RGE. 23 E.



BEGIN R/W JOB  
12004-2505  
S.R. 865 (SAN CARLOS BLVD.)  
STA. 105+00.00  
X = 515471.533  
Y = 773345.962

S.R. - 865 (SAN CARLOS BLVD.)

S.R. 865 - (SAN CARLOS BLVD.)  
FROM MAIN STREET  
TO SUMMERLIN BLVD.

PHOTO DATE 9/01/88

FLORIDA DEPARTMENT OF TRANSPORTATION  
RIGHT OF WAY SURVEYING AND MAPPING

### RIGHT OF WAY MAP

STATE ROAD NO. 865 LEE COUNTY

PRELIM	BY	DATE	APPROVED BY	DATE
RRW		4/2/90		11-14-91
FINAL	RRW	4/2/90	<i>W.R. Tufny</i>	

CHECKED BY: *R.A.* 7/23/91 DISTRICT SECRETARY

MAPS PREPARED BY: BHR OF TAMPA, INC. FIELD BOOK NO. 029682

WP 1 NO. 1114600 SCALE 1"=40'

SECTION 12004-2505 SHEET 4

SAN CARLOS-ON-THE-GULF  
BEACH SECTION  
FLAT BOOK 6, PAGE 6  
LEE COUNTY, FLORIDA

SEC. 13, TWP. 46 S., RGE. 23 E.



TWP. 46 S., RGE. 23 E.  
TWP. 46 S., RGE. 24 E.

SOVEREIGN SUBMERGED LANDS EASEMENT  
PER INSTR# 201600078488  
(SEE SECTION 12530-2614, SHEET 5)

6 SURVEY  
Curve No. 1  
PI Sta. 125+64.76  
X = 515,974.006  
Y = 775,348.649  
Δ = 15°25'31" Lt.  
D = 04°00'00"  
T = 193.99'  
L = 385.63'  
R = 1432.39'  
PC Sta. 123+70.77  
PT Sta. 127+66.40

S.R. 865 - (SAN CARLOS BLVD.)  
FROM MAIN STREET  
TO SUMMERLIN BLVD.

PHOTO DATE 9/01/88

FLORIDA DEPARTMENT OF TRANSPORTATION  
RIGHT OF WAY SURVEYING AND MAPPING

RIGHT OF WAY MAP

STATE ROAD NO. 865 LEE COUNTY

PRELIM.	BY	DATE	APPROVED BY	DATE
RRW	RRW	4/2/90		11-14-91
FINAL	RRW	4/2/90	W.R. Tuffy	

CHECKED BY: D.A. 7/23/91 DISTRICT SECRETARY

MAPS PREPARED BY: BHR OF TAMPA, INC. 029682

W.P.I. NO. 1114600 SCALE 1"=40'

ADD PARCEL 123-A	WAA	04/21/16
REVISION	BY	DATE

SECTION 12004-2505 SHEET 5

See Sheet 16 For Water Storage Area No. 1

SEC. 18, TWP. 46 S., RGE. 24 E.

SPORTSMAN COVE YACHT  
AND RACQUET CLUB  
A CONDOMINIUM  
CONDO. BOOK 8, PAGE 270  
LEE COUNTY, FLORIDA

**☉ SURVEY**  
 Curve No. 1  
 PI Sta. 125+64.76  
 X = 515,974.006  
 Y = 775,348.649  
 $\Delta = 15^{\circ}25'31''$  Lt.  
 D =  $04^{\circ}00'00''$   
 T = 193.99'  
 L = 385.63'  
 R = 1432.39'  
 PC Sta. 123+70.77  
 PT Sta. 127+56.40

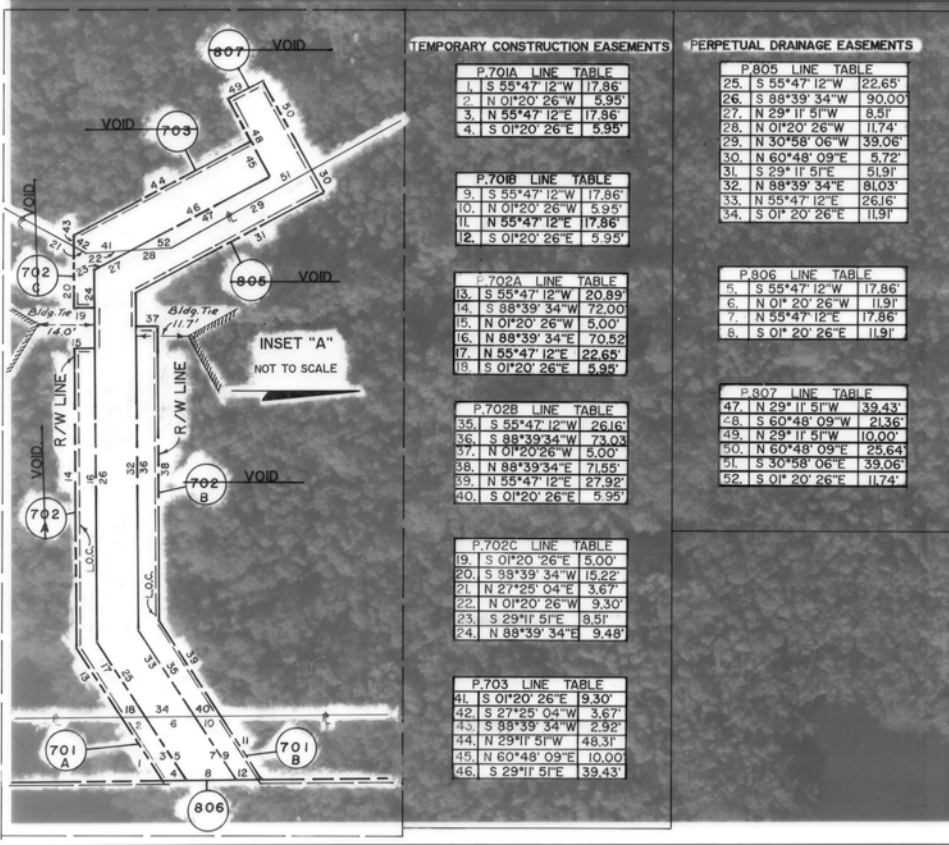
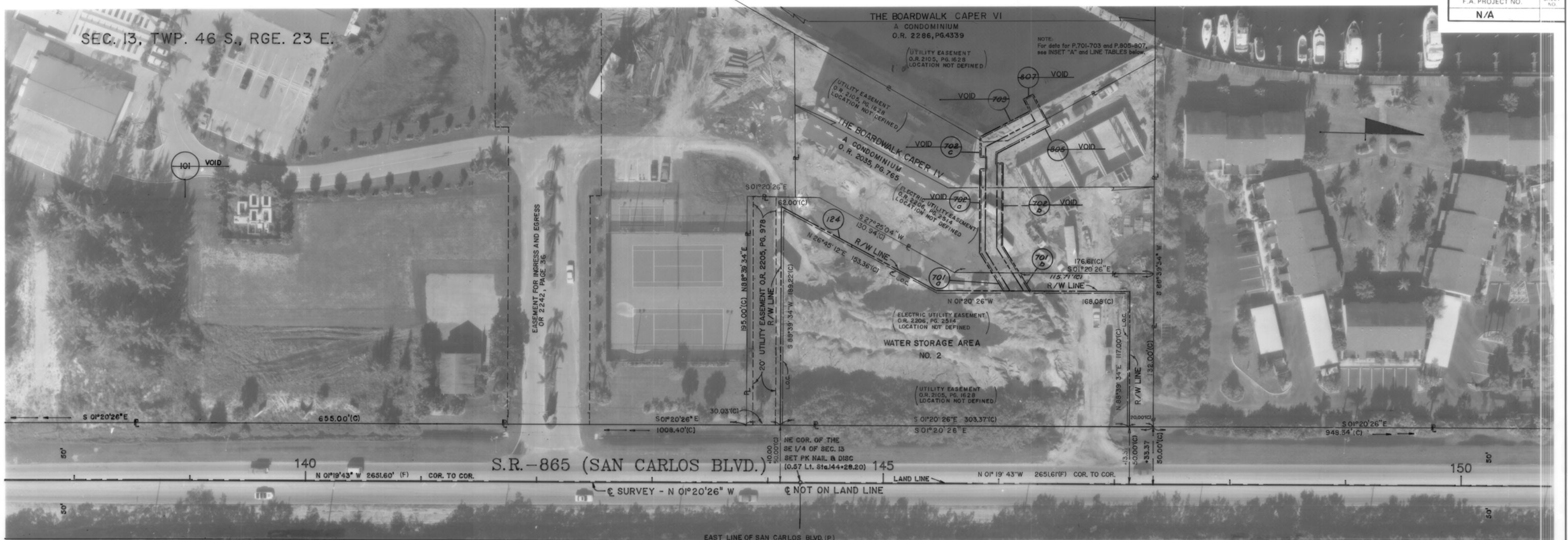
SEC. 13, TWP. 46 S., RGE. 23 E.



S.R. 865 - (SAN CARLOS BLVD.)  
 FROM MAIN STREET  
 TO SUMMERLIN BLVD.

SEC. 18, TWP. 46 S., RGE. 24 E.

PHOTO DATE 9/01/88	
FLORIDA DEPARTMENT OF TRANSPORTATION RIGHT OF WAY SURVEYING AND MAPPING	
<b>RIGHT OF WAY MAP</b>	
STATE ROAD NO. 865	LEE COUNTY
BY	DATE
APPROVED BY	DATE
PRELIM RRW 4/2/90	7-18-91
FINAL RBW 4/2/92	<i>W.P. Trufy</i>
CHECKED D.A. 7/23/91	DISTRICT SECRETARY
MAPS PREPARED BY BHR OF TAMPA, INC.	FIELD BOOK NO. 029682
W.P.I. NO. 1114600	SCALE 1" = 40'
REVISION	BY DATE
Add Exist. D. E.	L. Albritton 10-01-92
VOID P. 101, 800	L. Albritton 10-01-92
SECTION 12004 - 2505	SHEET 6



TEMPORARY CONSTRUCTION EASEMENTS			PERPETUAL DRAINAGE EASEMENTS		
<b>P.701A LINE TABLE</b>			<b>P.805 LINE TABLE</b>		
1	S 55°47'12" W	17.86'	25	S 55°47'12" W	22.65'
2	N 01°20'26" W	3.35'	26	S 88°39'34" W	90.00'
3	N 55°47'12" E	17.86'	27	N 29°11'51" W	8.51'
4	S 01°20'26" E	5.95'	28	N 01°20'26" W	11.74'
<b>P.701B LINE TABLE</b>			<b>P.806 LINE TABLE</b>		
9	S 55°47'12" W	17.86'	5	S 55°47'12" W	17.86'
10	N 01°20'26" W	5.95'	6	N 01°20'26" W	11.91'
11	N 55°47'12" E	17.86'	7	N 55°47'12" E	17.86'
12	S 01°20'26" E	5.95'	8	S 01°20'26" E	11.91'
<b>P.702A LINE TABLE</b>			<b>P.807 LINE TABLE</b>		
13	S 55°47'12" W	20.89'	47	N 29°11'51" W	39.43'
14	S 88°39'34" W	72.00'	48	S 60°48'09" W	21.36'
15	N 01°20'26" W	5.00'	49	N 29°11'51" W	10.00'
16	N 88°39'34" E	70.52'	50	N 60°48'09" E	25.64'
17	N 55°47'12" E	22.65'	51	S 30°58'06" E	39.06'
18	S 01°20'26" E	5.95'	52	S 01°20'26" E	11.74'
<b>P.702B LINE TABLE</b>					
35	S 55°47'12" W	26.16'			
36	S 88°39'34" W	73.03'			
37	N 01°20'26" W	5.00'			
38	N 88°39'34" E	71.55'			
39	N 55°47'12" E	27.92'			
40	S 01°20'26" E	5.95'			
<b>P.702C LINE TABLE</b>					
19	S 01°20'26" E	5.00'			
20	S 38°39'34" W	15.22'			
21	N 27°25'04" E	3.67'			
22	N 01°20'26" W	9.30'			
23	S 29°11'51" E	8.51'			
24	N 88°39'34" E	9.48'			
<b>P.703 LINE TABLE</b>					
41	S 01°20'26" E	19.30'			
42	S 27°25'04" W	3.67'			
43	S 88°39'34" W	2.92'			
44	N 29°11'51" W	48.31'			
45	N 60°48'09" E	10.00'			
46	S 29°11'51" E	39.43'			



S.R. 865 (SAN CARLOS BLVD.)  
FROM MAIN STREET  
TO SUMMERLIN BLVD.

PHOTO DATE 9/01/88		FLORIDA DEPARTMENT OF TRANSPORTATION RIGHT OF WAY SURVEYING AND MAPPING	
<b>RIGHT OF WAY MAP</b>		STATE ROAD NO. 865 LEE COUNTY	
BY	DATE	APPROVED BY	DATE
PRELIM RRW	4/2/90		7-14-91
FINAL RBW	4/2/90		
CHECKED	D.A. 7/23/91	DISTRICT SECRETARY	
ADD P.703	S.J.METH	06-21-93	
ADD P.702a & b	S.J.METH	06-21-93	
ADD P.702a & b	S.J.METH	06-21-93	
REV. P.805-807	S.J.METH	06-21-93	
VOID P. 101 01d			
ADD P. 124, 805-807	L. Albritton	10-01-92	
REVISION	BY	DATE	
SECTION I2004-2505	SCALE 1"= 40'		SHEET 7

SEC. 13, TWP. 46 S., RGE. 23 E.

THE BOARDWALK  
CAPER  
CONDOMINIUM  
PHASE I  
O.R. BOOK 1541, PG. 315

10' ELECTRIC UTILITY EASEMENT  
(O.R. 1596, PG. 976)



SEC. 18, TWP. 46 S., RGE. 24 E.

S.R. 865 - (SAN CARLOS BLVD.)  
FROM MAIN STREET  
TO SUMMERLIN BLVD.

PHOTO DATE 9/01/88

FLORIDA DEPARTMENT OF TRANSPORTATION  
RIGHT OF WAY SURVEYING AND MAPPING  
**RIGHT OF WAY MAP**

STATE ROAD NO. 865 LEE COUNTY

BY	DATE	APPROVED BY	DATE
PRELIM RRW	4/2/90		11-14-91
FINAL	RRW 4/2/90	W.R. Tudy	
CHECKED	R.A. 7/23/91	DISTRICT SECRETARY	

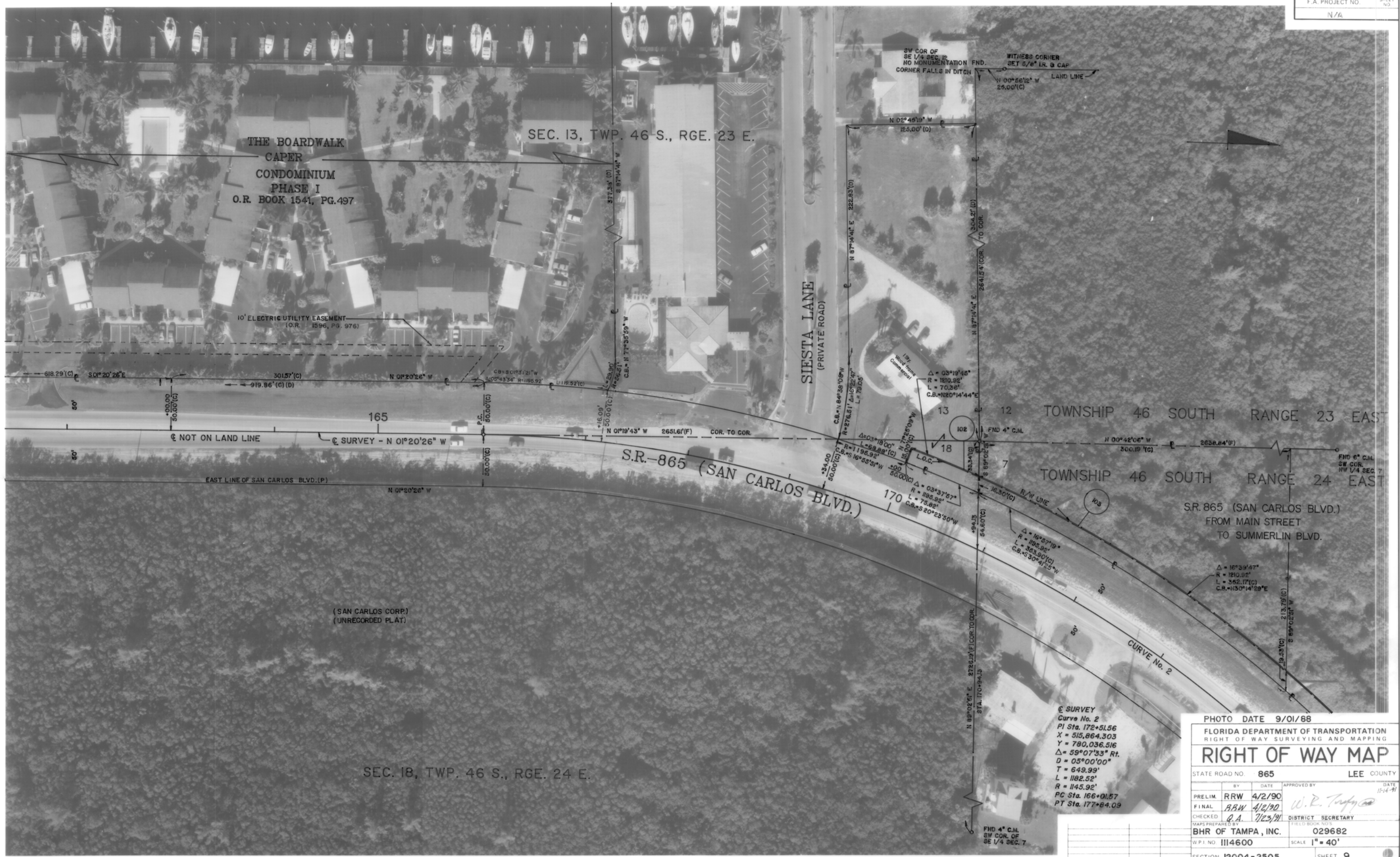
MAPS PREPARED BY BHR OF TAMPA, INC. FIELD BOOK NO. 029682

W.P.1 NO. III4600 SCALE 1" = 40'

REVISION	BY	DATE

SECTION I2004 - 2505 SHEET 8





THE BOARDWALK  
 CAPER  
 CONDOMINIUM  
 PHASE I  
 O.R. BOOK 1541, PG.497

SEC. 13, TWP. 46 S., RGE. 23 E.

SIESTA LANE  
 (PRIVATE ROAD)

S.R.-865 (SAN CARLOS BLVD.)

TOWNSHIP 46 SOUTH RANGE 23 EAST

TOWNSHIP 46 SOUTH RANGE 24 EAST

S.R. 865 (SAN CARLOS BLVD.)  
 FROM MAIN STREET  
 TO SUMMERLIN BLVD.

(SAN CARLOS CORP.)  
 (UNRECORDED PLAT)

SEC. 18, TWP. 46 S., RGE. 24 E.

☉ SURVEY  
 Curve No. 2  
 PI Sta. 172+51.56  
 X = 515,864.303  
 Y = 780,036.516  
 Δ = 59°07'33" Rt.  
 D = 05°00'00"  
 T = 649.99'  
 L = 1182.52'  
 R = 1145.92'  
 PC Sta. 166+01.57  
 PT Sta. 177+84.09

PHOTO DATE 9/01/88

FLORIDA DEPARTMENT OF TRANSPORTATION  
 RIGHT OF WAY SURVEYING AND MAPPING  
**RIGHT OF WAY MAP**

STATE ROAD NO. 865 LEE COUNTY

BY	DATE	APPROVED BY	DATE
PRELIM. RRW	4/2/90		11-14-91
FINAL. RBW	4/2/90	<i>W.R. Trefny</i>	
CHECKED. C.A.	7/23/91		

MAPS PREPARED BY: BHR OF TAMPA, INC. DISTRICT SECRETARY  
 W.P.I. NO. 1114600 SCALE 1" = 40'

SEC. 7, TWP. 46 S., RGE. 24 E.



Q SURVEY  
Curve No. 2  
PI Sta. 172+51.56  
X = 515,664.303  
Y = 780,036.516  
Δ = 59°07'33" Rt.  
D = 05°00'00"  
T = 643.99'  
L = 1182.32'  
R = 1145.92'  
PC Sta. 166+01.57  
PT Sta. 177+84.09

NOT INCLUDED IN PLAT  
NUMBERED PARCELS SHOWN IN  
TIP TOP ISLES SUBDIVISION  
BUT NOT INCLUDED IN PLAT.

TIP TOP ISLES  
UNIT No. 1  
PLAT BOOK 13, PAGE'S 146  
LEE COUNTY, FLORIDA

S.R. 865 - (SAN CARLOS BLVD.)  
FROM MAIN STREET  
TO SUMMERLIN BLVD.

PHOTO DATE 9/01/88	
FLORIDA DEPARTMENT OF TRANSPORTATION RIGHT OF WAY SURVEYING AND MAPPING	
<b>RIGHT OF WAY MAP</b>	
STATE ROAD NO. 865	LEE COUNTY
BY	DATE
APPROVED BY	DATE
PRELIM RRW 4/2/90	11/14/91
FINAL RBW 4/2/92	
CHECKED R.A. 7/23/91	DISTRICT SECRETARY
MAPS PREPARED BY BHR OF TAMPA, INC.	FIELD BOOK NO. 113
W.P.I. NO. 1114600	SCALE 1" = 40'
SECTION 12004-2505	SHEET 10

SEC. 7, TWP. 46 S., RGE. 24 E.

SEE KEY MAP "A" FOR PARCEL 108 PARENT TRACT

SEE KEY MAPS "A" & "B" FOR PARENT TRACT



S.R. - 865 (SAN CARLOS BLVD.)

FORT MYERS BEACH ROAD (P)

100' WATERWAY (P)

S.R. 865 - (SAN CARLOS BLVD.)  
FROM MAIN STREET  
TO SUMMERLIN BLVD.

TIP TOP ISLES  
UNIT No. 1  
PLAT BOOK 13, PAGE 146  
LEE COUNTY, FLORIDA

NUMBERED PARCELS SHOWN IN  
TIP TOP ISLES SUBDIVISION  
BUT NOT INCLUDED IN PLAT.

NOT INCLUDED IN PLAT

DEED BOOK 300, Page 71

DEED BOOK 302, Page 24

DEED BOOK 302, Page 26

TIP TOP ISLES  
UNIT No. 1  
PLAT BOOK 13, PAGE 146  
LEE COUNTY, FLORIDA

PHOTO DATE 9/01/88

FLORIDA DEPARTMENT OF TRANSPORTATION  
RIGHT OF WAY SURVEYING AND MAPPING  
**RIGHT OF WAY MAP**

STATE ROAD NO. 865 LEE COUNTY

BY	DATE	APPROVED BY	DATE
PRELIM. RRW	4/2/90		11-14-91
FINAL. BAW	4/2/90	<i>W.P. Trufy</i>	
CHECKED. P.A.	7/23/91		

MAPS PREPARED BY: BHR OF TAMPA, INC. DISTRICT SECRETARY: 029682

W.P.I. NO. 1114600 SCALE 1" = 40'

SECTION 12004 - 2505 SHEET 11

REVISION	BY	DATE

SEC. 7, TWP. 46 S., RGE. 24 E.



@ SURVEY  
 Curve No. 3  
 P Sta. 203+36.34  
 X = 515,573.580  
 Y = 701,743.610  
 Δ = 59°21'27" Lt.  
 D = 05°00'00"  
 L = 653.08'  
 R = 1187.15'  
 PC Sta. 198+83.28  
 PT Sta. 208+70.43

INSET 'G' N.T.S.  
 N57°47'07"E  
 (C) 13.28'(C)  
 L73' 6.28'(C)  
 S 87°47'07" W  
 83.28  
 30.00(C)

S.R.-865 (SAN CARLOS BLVD.)

BAYSIDE ESTATES  
 MOBILE HOME SUBDIVISION  
 UNIT NO. 1  
 PLAT BOOK 25, PAGE 22  
 LEE COUNTY, FLORIDA

TIP TOP ISLES  
 UNIT No. 1  
 PLAT BOOK 13, PAGE 146  
 LEE COUNTY, FLORIDA

NUMBERED PARCELS SHOWN IN  
 TIP TOP ISLES SUBDIVISION  
 BUT NOT INCLUDED IN PLAT.

PHOTO DATE 9/01/88

FLORIDA DEPARTMENT OF TRANSPORTATION  
RIGHT OF WAY SURVEYING AND MAPPING

### RIGHT OF WAY MAP

STATE ROAD NO. 865 LEE COUNTY

BY	DATE	APPROVED BY	DATE
PRELIM. RRW	4/2/90		11-14-91
FINAL. RBW	4/12/90	W. R. Tuffy	
CHECKED	7/23/91		

MAPS PREPARED BY: BHR OF TAMPA, INC. FIELD BOOK NO. 029682  
 W.P.I. NO. III4600 SCALE 1" = 40'  
 SECTION I2004 - 2505 SHEET 12

Rev. Take: P115 S. J. Nemeth 5-11-93  
 REVISION BY DATE

SEC. 7, TWP. 46 S., RGE. 24 E.

WATER STORAGE AREA No. 4  
 @ SURVEY  
 Curve No. 3  
 PI Sta. 203+36.34  
 X = 518,573.580  
 Y = 781,743.610  
 Δ = 59°21'27" Lt.  
 D = 05°00'00"  
 T = 663.06'  
 L = 1167.16'  
 R = 1145.92'  
 PC Sta. 196+03.28  
 PT Sta. 208+70.43

SEE KEY MAP 'A' & 'B' FOR PARENT TRACT

205  
 CURVE No. 3

BOAT BASIN

TRACT "B"

AZALEA LANE

BLOCK C

BAYSIDE ESTATES  
 MOBILE HOME SUBDIVISION  
 UNIT NO. 1  
 PLAT BOOK 25, PAGE 22  
 LEE COUNTY, FLORIDA

BAYSIDE BLVD.

TRACT "A"

LOT 1  
 BLOCK "A"

COMMERCIAL

PINE RIDGE ROAD

S.R. - 865 (SAN CARLOS BLVD.)

S.R. 865 - (SAN CARLOS BLVD.)  
 FROM MAIN STREET  
 TO SUMMERLIN BLVD.

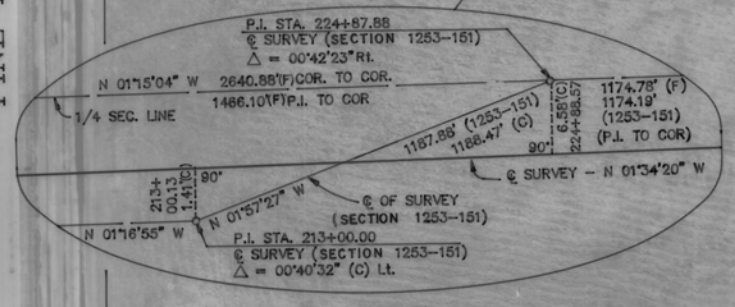


PHOTO DATE 9/01/88

FLORIDA DEPARTMENT OF TRANSPORTATION  
 RIGHT OF WAY SURVEYING AND MAPPING

### RIGHT OF WAY MAP

STATE ROAD NO. 865 LEE COUNTY

BY	DATE	APPROVED BY	DATE
PRELIM. RRW	4/2/90		11-14-91
FINAL	BBW 4/2/90	W.P. Kelly	
CHECKED	R.A. 7/23/91	DISTRICT SECRETARY	

MAPS PREPARED BY: BHR OF TAMPA, INC. 029682

WP 1 NO. 1114600 SCALE 1" = 40'

SECTION I2004-2505 SHEET 13

VOID PARCEL 808

REVISION	BY	DATE
1	J. ROSS	03-23-99
2	L. ALBRITTON	04-29-98
3	S.J. MEMMOTH	10-26-92
4	S.J. MEMMOTH	10-26-92
5	L. ALBRITTON	10-14-92

LAKESIDE SUBDIVISION  
 PLAT BOOK 33, PAGE 76  
 LEE COUNTY, FLORIDA

SEC. 7, TWP. 46 S., RGE. 24 E.

PART OF PARENT TRACT  
 PARCEL 108  
 SEE KEY MAPS 'A' & 'B'



S.R. 865 -- (SAN CARLOS BLVD.)  
 FROM MAIN STREET  
 TO SUMMERLIN BLVD.

PHOTO DATE 9/01/88

FLORIDA DEPARTMENT OF TRANSPORTATION  
 RIGHT OF WAY SURVEYING AND MAPPING

### RIGHT OF WAY MAP

STATE ROAD NO. 865 LEE COUNTY

BY	DATE	APPROVED BY	DATE
PRELIM RRW	4/2/90		11-4-91
FINAL RRW	4/2/90	<i>W.R. Tuffy</i>	
CHECKED C.A.	7/23/91	DISTRICT SECRETARY	

MAPS PREPARED BY BHR OF TAMPA, INC. 029682

WP1 NO. III4600 SCALE 1" = 40'

SECTION I2004-2505 SHEET 14

Rev. distance S.J. Nemeth 10-26-92  
 Void P 803 Add P 100,001 L Albritton 10-14-92

LAKESIDE SUBDIVISION  
PLAT BOOK 33, PAGE 76  
LEE COUNTY, FLORIDA

SEC. 7, TWP. 46 S., RGE. 24 E.

SEC. 6, TWP. 46 S., RGE. 24 E.

BLOCK A

NOT INCLUDED  
IN PLAT

C.R. 869  
SUMMERLIN BOULEVARD

END R/W JOB  
12004-2505  
S.R. 865 (SAN CARLOS BLVD.)

S.R. -865 (SAN CARLOS BLVD.)

TRACT A

LINDA LOMA SUBDIVISION  
UNIT "B"  
PLAT BOOK 25, PAGE 77 & 78  
LEE COUNTY, FLORIDA

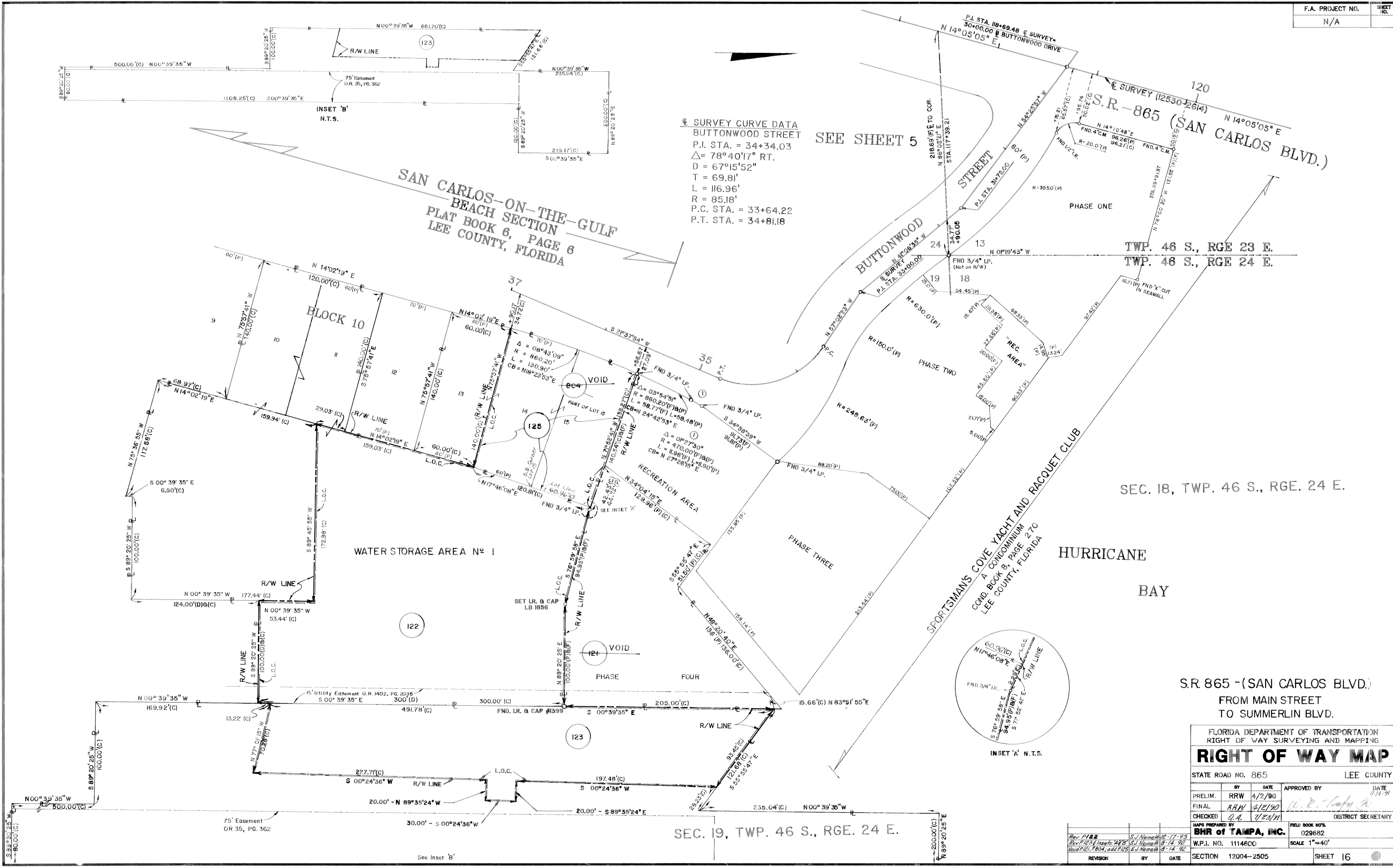
S.R. 865 - (SAN CARLOS BLVD.)  
FROM MAIN STREET  
TO SUMMERLIN BLVD.

PHOTO DATE 9/01/88  
FLORIDA DEPARTMENT OF TRANSPORTATION  
RIGHT OF WAY SURVEYING AND MAPPING  
**RIGHT OF WAY MAP**

STATE ROAD NO.	865	LEE COUNTY
BY	DATE	APPROVED BY
PRELIM.	RRW	4/2/90
FINAL	RRW	4/2/90
CHECKED	C.A.	7/12/91
MAPS PREPARED BY	BHR OF TAMPA, INC.	DISTRICT SECRETARY
W.P.I. NO.	III4600	SCALE 1"=40'
SECTION	12004-2505	SHEET 15

REVISION	BY	DATE





**CL SURVEY CURVE DATA**  
 BUTTONWOOD STREET  
 P.I. STA. = 34+34.03  
 $\Delta = 78^{\circ}40'17''$  RT.  
 D = 67°15'52"  
 T = 69.81'  
 L = 116.96'  
 R = 85.18'  
 P.C. STA. = 33+64.22  
 P.T. STA. = 34+81.18

SEE SHEET 5

TWP. 46 S., RGE 23 E.  
 TWP. 46 S., RGE 24 E.

SEC. 18, TWP. 46 S., RGE. 24 E.

HURRICANE  
 BAY

S.R. 865 -(SAN CARLOS BLVD.)  
 FROM MAIN STREET  
 TO SUMMERLIN BLVD.

FLORIDA DEPARTMENT OF TRANSPORTATION  
 RIGHT OF WAY SURVEYING AND MAPPING

**RIGHT OF WAY MAP**

STATE ROAD NO. 865 LEE COUNTY

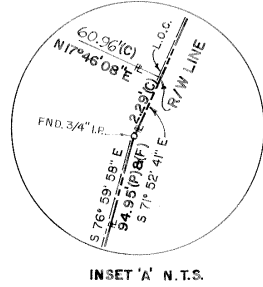
PRELIM.	RRW	DATE	APPROVED BY	DATE
		4/2/90		11-14-91
FINAL	RRW	4/2/90	<i>W. R. Coffey</i>	
CHECKED	Q.A.	1/23/91		DISTRICT SECRETARY

MAPS PREPARED BY **BHR of TAMPA, INC.** FIELD BOOK NO. 029682

W.P.I. NO. 1114600 SCALE 1"=40'

SECTION 12004-2505 SHEET 16

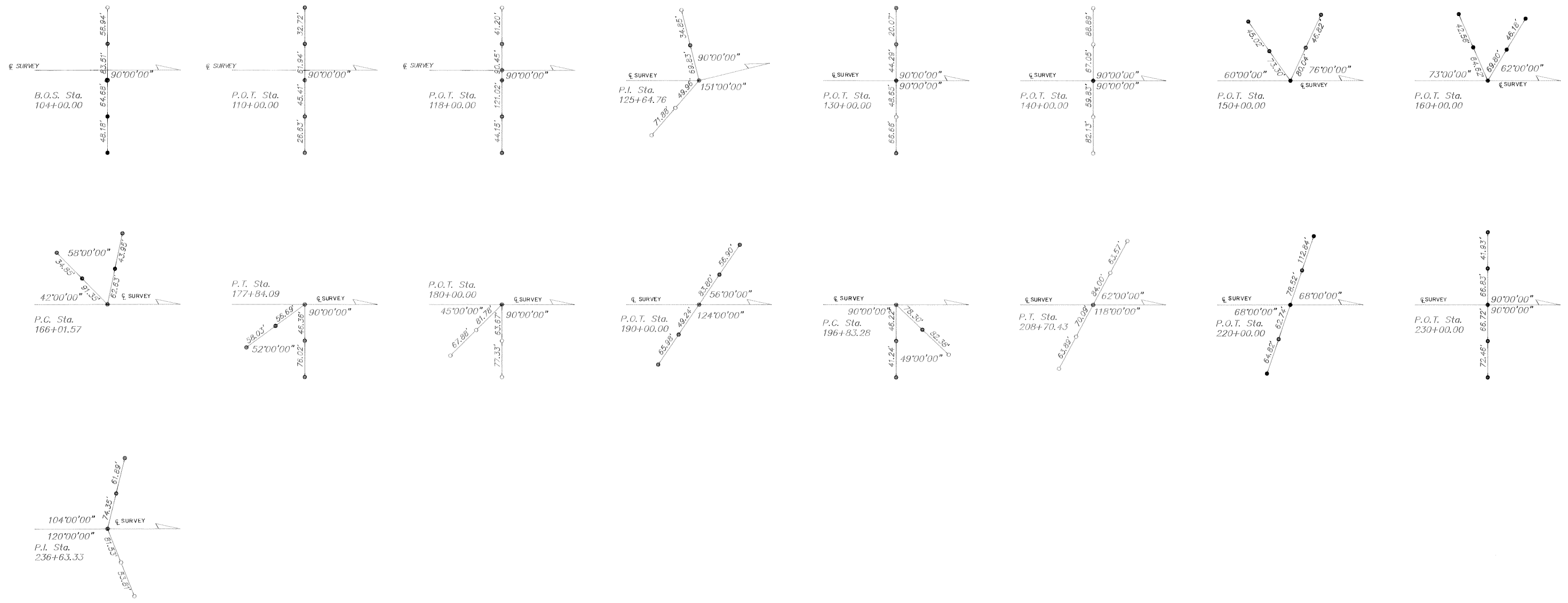
REVISION	BY	DATE
Rev P122	S. J. Nemech	10-17-93
Rev P123, Inset A	S. J. Nemech	6-14-92
Void P121, P104, add P125	S. J. Nemech	6-14-92



SEC. 19, TWP. 46 S., RGE. 24 E.

See Inset 'B'





**S.R. 865 – (SAN CARLOS BLVD.)**  
FROM MAIN STREET  
TO SUMMERLIN BLVD.

*CENTERLINE CONTROL POINT REFERENCES*

- NOTES:**
- 1. ○ = SET 5/8" IRON ROD & CAP LB# "1856" UNLESS OTHERWISE NOTED  
● = SET PK NAIL & DISC PLS# "2995" UNLESS OTHERWISE NOTED
  - = CENTERLINE OF SURVEY
  - 2. DRAWINGS NOT TO SCALE.
  - 3. ALL LINEAR DIMENSIONS ARE IN FEET AND DECIMAL PARTS THEREOF.

FLORIDA DEPARTMENT OF TRANSPORTATION RIGHT OF WAY SURVEYING AND MAPPING			
<b>RIGHT OF WAY MAP</b>			
STATE ROAD NO. 865		LEE COUNTY	
PRELIM.	RRW	DATE 8/11/89	APPROVED BY DATE 11-6-91
FINAL	RAW	4/2/90	<i>W.R. Tuffy</i>
CHECKED	QA	7/23/91	DISTRICT SECRETARY
MAPS PREPARED BY <b>BHR of TAMPA, INC.</b>		FIELD BOOK NO'S. 029682	
W.P.I. NO. 1114600		SCALE N.T.S.	
REVISION	BY	DATE	SECTION 12004-2505 SHEET 17

TABLE

OF

OWNERSHIPS

Table with columns: PARCEL NO., SHEET NO., NAME, AREA TAKEN, REMAINDERS RIGHT, REMAINDERS LEFT, COMMENTS, RECORDING DATA. Rows include parcels 100 through 703 with various owner names and recording data.

Table with columns: PARCEL NO., SHEET NO., NAME, AREA TAKEN, REMAINDERS RIGHT, REMAINDERS LEFT, COMMENTS, RECORDING DATA. Rows include parcels 800 through 808 with various owner names and recording data.

LEGEND table with columns: PARCEL NUMBER IDENTIFICATION, TYPE USE. Rows include 100-699 (DEEDS OF ALL TYPES), 700-799 (TEMPORARY EASEMENTS), 800-899 (PERPETUAL EASEMENTS), 900-999 (LICENSE AGREEMENT).

FLORIDA DEPARTMENT OF TRANSPORTATION RIGHT OF WAY SURVEYING AND MAPPING. RIGHT OF WAY MAP. STATE ROAD NO. 865 LEE COUNTY. Includes revision table and project details.