

CONTRACT PLANS COMPONENTS

ROADWAY
SIGNING AND PAVEMENT MARKING
SIGNALIZATION
LIGHTING

**STATE OF FLORIDA
DEPARTMENT OF TRANSPORTATION**

ROADWAY PLANS

FINANCIAL PROJECT ID 449655-1-52-01
(FEDERAL FUNDS)
POLK COUNTY (16140)
STATE ROAD NO. 544
INTERSECTION IMPROVEMENTS

INDEX OF ROADWAY PLANS

SHEET NO.	SHEET DESCRIPTION
1	KEY SHEET
2	PROJECT CONTROL
3 - 4	ROADWAY PLAN

GOVERNING STANDARD PLANS:

Florida Department of Transportation, FY 2023-24 Standard Plans for Road and Bridge Construction and applicable Interim Revisions (IRs).

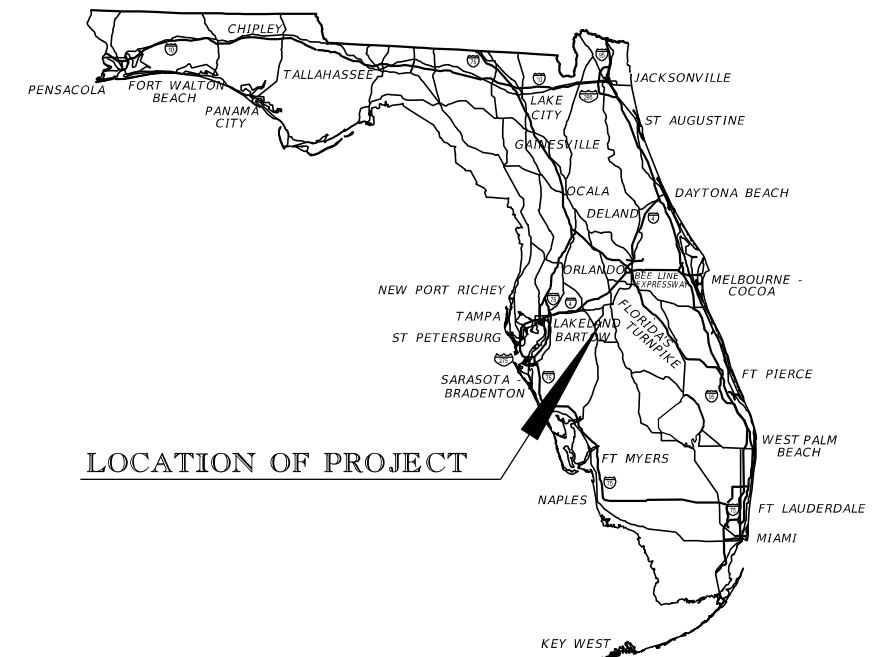
Standard Plans for Road Construction and associated IRs are available at the following website: <http://www.fdot.gov/design/standardplans>

GOVERNING STANDARD SPECIFICATIONS:

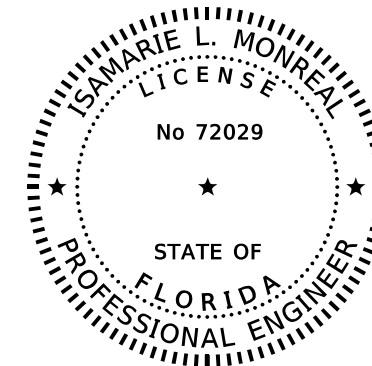
Florida Department of Transportation, FY 2023-24 Standard Specifications for Road and Bridge Construction at the following website: <http://www.fdot.gov/programmanagement/Implemented/SpecBooks>

PHASE 0 GREENLINES
REVIEW
02/27/2024

PROJECT LOCATION URL: <http://tinyurl.com/kdzpbra5>
PROJECT LIMITS: BEGIN MP 0.281 - END MP 0.4116
EXCEPTIONS: NONE
BRIDGE LIMITS: NONE
RAILROAD CROSSING: NONE



LOCATION OF PROJECT



THIS ITEM HAS BEEN DIGITALLY
SIGNED AND SEALED BY

ON THE DATE ADJACENT TO THE SEAL
PRINTED COPIES OF THIS DOCUMENT ARE
NOT CONSIDERED SIGNED AND SEALED
AND THE SIGNATURE MUST BE VERIFIED
ON ANY ELECTRONIC COPIES.

FLORIDA DEPARTMENT OF TRANSPORTATION
801 N. BROADWAY AVENUE
BARTOW, FL 33830-3809
ISAMARIE L. MONREAL, P.E. NO. 72029

THE ABOVE NAMED PROFESSIONAL IS
RESPONSIBLE FOR THE FOLLOWING SHEETS
IN ACCORDANCE WITH RULE 61G15-23.004 F.A.C.

**ROADWAY PLANS
ENGINEER OF RECORD:**

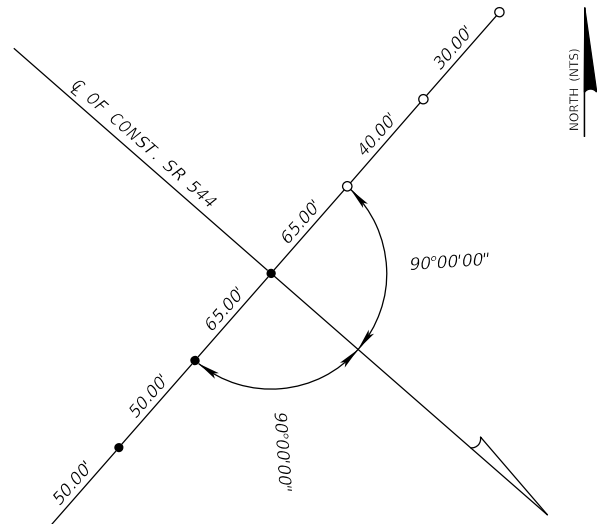
ISAMARIE L. MONREAL, P.E.
P.E. LICENSE NUMBER 72029
FLORIDA DEPARTMENT OF TRANSPORTATION
DISTRICT ONE OFFICE
801 N. BROADWAY AVENUE
BARTOW, FL 33830-3809
(863) 519-2300

FDOT PROJECT MANAGER:

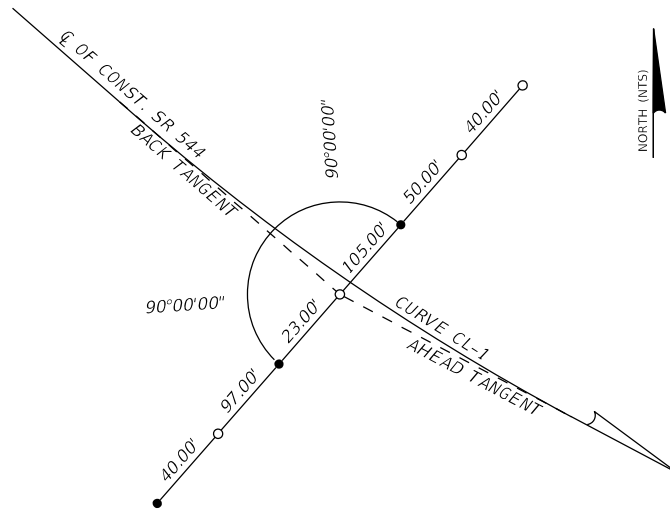
ISAMARIE L. MONREAL, P.E.

CONSTRUCTION CONTRACT NO.	FISCAL YEAR	SHEET NO.
PENDING	27	1

THE OFFICIAL RECORD OF THIS SHEET IS THE ELECTRONIC FILE DIGITALLY SIGNED AND SEALED UNDER RULE 61G15-23.004, F.A.C.

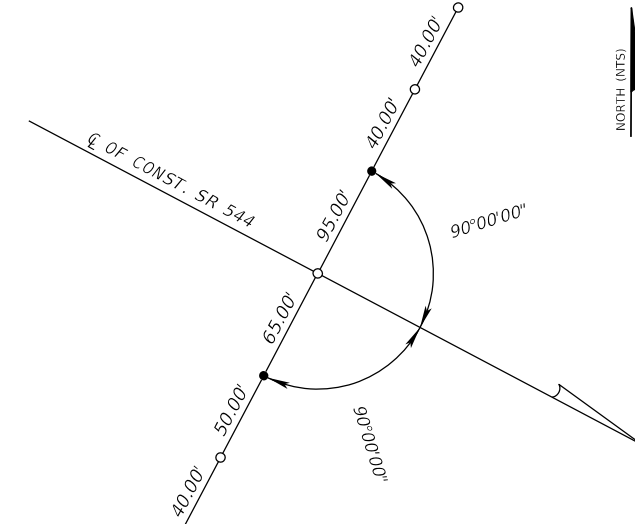


BEGINNING OF SURVEY
 CL OF CONSTRUCTION
 POT STA. 120+00.00
 SET 5/8" IRON ROD AND CAP "CIVILSURV LB 7805"



CL OF CONSTRUCTION
 PI STA. 129+09.91
 CURVE CL-1
 SET NAIL AND DISK "CIVILSURV LB 7805"

CL STATION	NORTHING	EASTING
STA. 120+00.00	1353192.5168	727170.8194
STA. 129+09.91	1352593.5937	727855.8159
STA. 138+00.00	1352174.9927	728648.1794



END OF SURVEY
 CL OF CONSTRUCTION
 POT STA. 138+00.00
 SET NAIL AND DISK "CIVILSURV LB 7805"

LEGEND

- = SET NAIL AND DISK "CIVILSURV REF PT" (UNLESS OTHERWISE NOTED)
- = SET 5/8" IRON ROD AND CAP "CIVILSURV REF PT" (UNLESS OTHERWISE NOTED)
- CL = CENTERLINE
- CONST. = CONSTRUCTION
- IRC = IRON ROD AND CAP
- LB = LICENSED BUSINESS
- PI = POINT OF INTERSECTION
- POT = POINT ON TANGENT
- STA. = STATION

PROJECT CONTROL NOTES

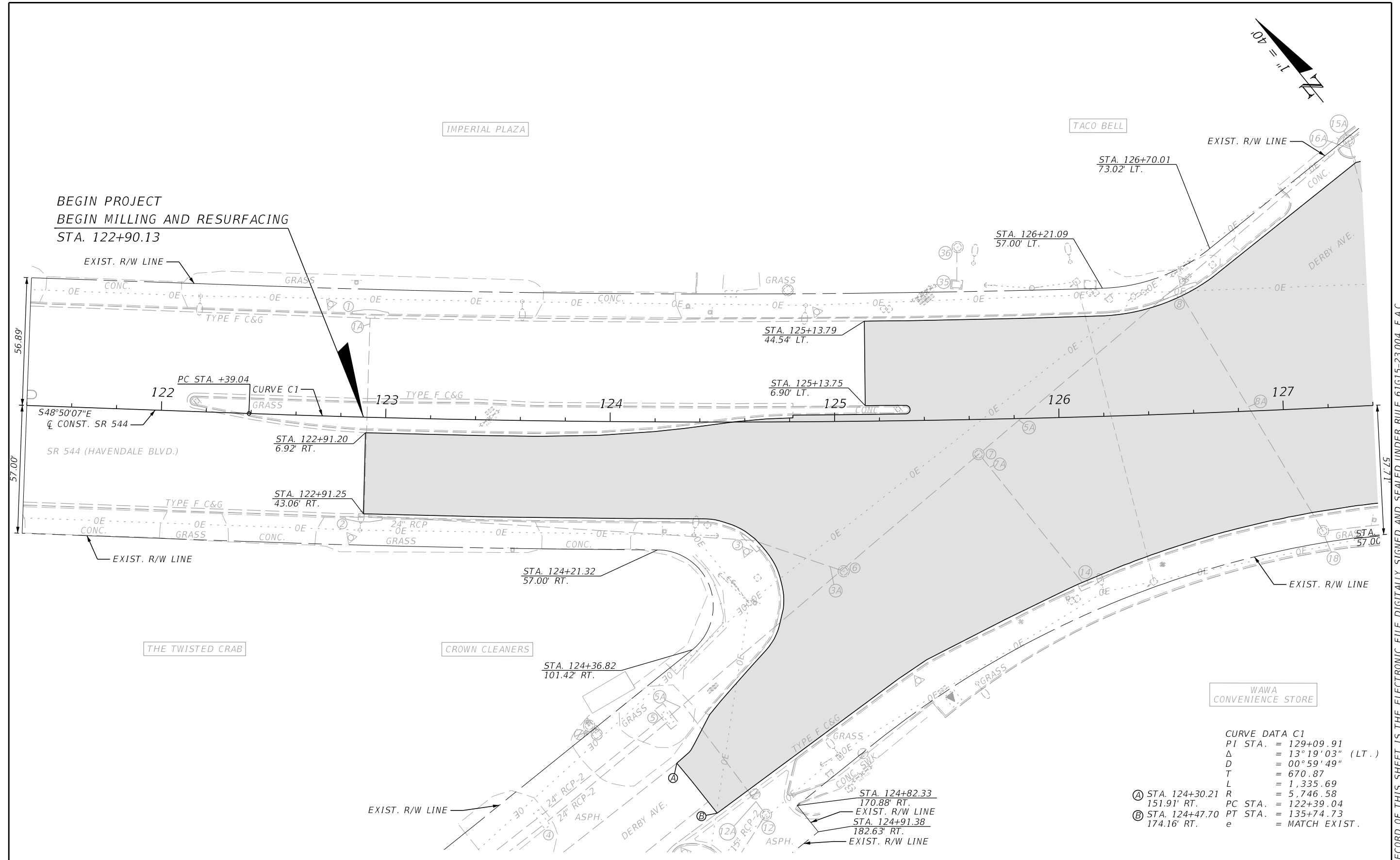
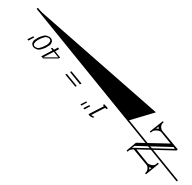
1. PROJECT IS BASED ON THE FLORIDA STATE PLANE COORDINATE SYSTEM NAD 1983 / 2011 HORIZONTAL DATUM
2. ELEVATIONS ARE BASED ON NORTH AMERICAN VERTICAL DATUM 1988 (NAVD88)

PRIMARY VERTICAL CONTROL

BENCHMARK	NORTHING (Y)	EASTING (X)	ELEVATION (Z)	STATION	OFFSET	DESCRIPTION
BM 578	1354120	726190	162.674	BEYOND PROJECT LIMITS	94 LT.	FOUND 4"X4" CONCRETE MONUMENT WITH FDOT BRASS DISK STAMPED "BM 125A"
BM 101	1353293	726971	157.401	BEYOND PROJECT LIMITS	46 LT.	FOUND 4"X4" CONCRETE MONUMENT WITH FDOT BRASS DISK STAMPED "BM 509"
BM 102	1352607	727821	156.613	128+71	50 LT.	FOUND 4"X4" CONCRETE MONUMENT WITH FDOT BRASS DISK STAMPED "BM 126"
BM 138	1352103	728641	157.598	138+27	656 RT.	FOUND 4"X4" CONCRETE MONUMENT WITH FDOT BRASS DISK STAMPED "BM 510"

REVISIONS				ENGINEER OF RECORD			STATE OF FLORIDA DEPARTMENT OF TRANSPORTATION			SHEET NO. 2
DATE	DESCRIPTION	DATE	DESCRIPTION	ISAMARIE L. MONREAL LICENSE NUMBER: 72029 FLORIDA DEPT. OF TRANSPORTATION 801 N. BROADWAY AVENUE BARTOW, FL 33830-3809			ROAD NO.	COUNTY	FINANCIAL PROJECT ID	
				SR 544	POLK	449655-1-52-01	PROJECT CONTROL			

THE OFFICIAL RECORD OF THIS SHEET IS THE ELECTRONIC FILE DIGITALLY SIGNED AND SEALED UNDER RULE 61G15-23.004, F.A.C.



CURVE DATA C1

PI STA.	=	129+09.91
Δ	=	13° 19' 03" (LT.)
D	=	00° 59' 49"
T	=	670.87
L	=	1,335.69
R	=	5,746.58
PC STA.	=	122+39.04
PT STA.	=	135+74.73
e	=	MATCH EXIST.

- Ⓐ STA. 124+30.21
151.91' RT.
- Ⓑ STA. 124+47.70
174.16' RT.

REVISIONS				ENGINEER OF RECORD		STATE OF FLORIDA DEPARTMENT OF TRANSPORTATION			ROADWAY PLAN	SHEET NO. 3
DATE	DESCRIPTION	DATE	DESCRIPTION	ISAMARIE L. MONREAL LICENSE NUMBER: 72029 FLORIDA DEPT. OF TRANSPORTATION 801 N. BROADWAY AVENUE BARTOW, FL 33830-3809		ROAD NO.	COUNTY	FINANCIAL PROJECT ID		
								SR 544		

THE OFFICIAL RECORD OF THIS SHEET IS THE ELECTRONIC FILE DIGITALLY SIGNED AND SEALED UNDER RULE 61G15-23.004, F.A.C.

