

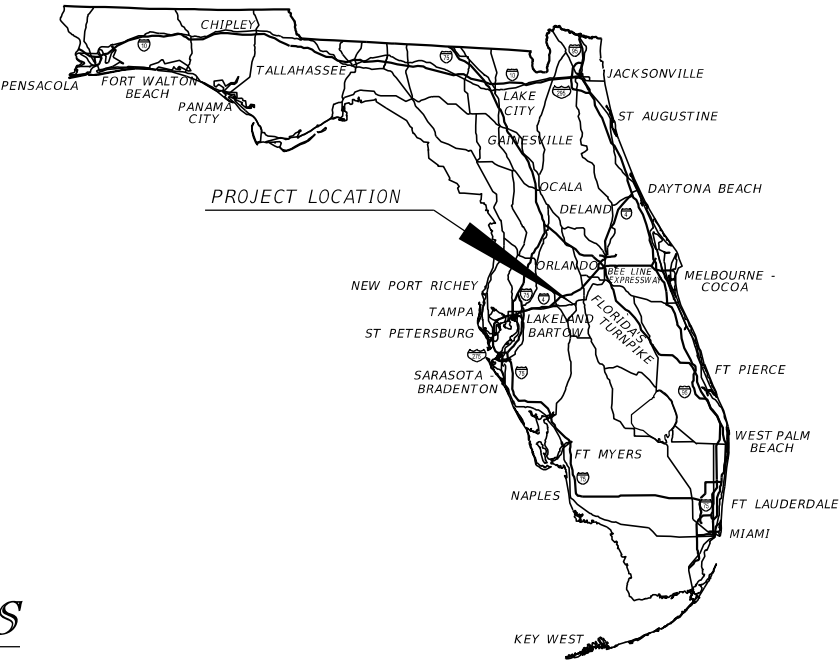
STATE OF FLORIDA  
DEPARTMENT OF TRANSPORTATION  
CONTRACT PLANS

FINANCIAL PROJECT ID 447877-1-52-01

POLK COUNTY (16140)

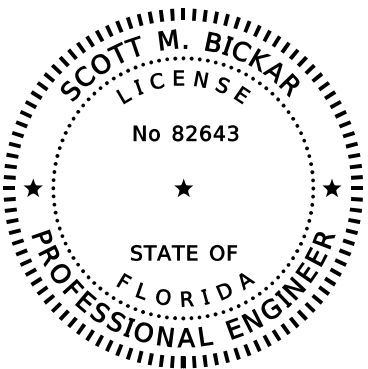
STATE ROAD NO. SR 544  
SAFETY IMPROVEMENTS ON SR 544 FROM 5TH ST. W.  
TO 1ST ST. N.

SIGNING AND PAVEMENT MARKING PLANS



INDEX OF SIGNING AND  
PAVEMENT MARKING PLANS

SHEET NO.	SHEET DESCRIPTION
S-1	KEY SHEET
S-2	TABULATION OF QUANTITIES
S-3	GENERAL NOTES
S-4 - S-6	SIGNING AND PAVEMENT MARKINGS PLAN SHEET



THIS ITEM HAS BEEN DIGITALLY  
SIGNED AND SEALED BY:

ON THE DATE ADJACENT TO THE SEAL

PRINTED COPIES OF THIS DOCUMENT ARE  
NOT CONSIDERED SIGNED AND SEALED.  
THE SIGNATURE MUST BE VERIFIED  
ON ANY ELECTRONIC COPIES.

DEWBERRY ENGINEERS, INC.  
800 NORTH MAGNOLIA AVE., SUITE 1000  
ORLANDO, FL 32803  
SCOTT. M. BICKAR, P.E. NO. 82643

SIGNING AND PAVEMENT  
MARKING PLANS  
ENGINEER OF RECORD:

SCOTT M. BICKAR, P.E.  
P.E. LICENSE NUMBER 82643  
DEWBERRY ENGINEERS, INC.  
800 NORTH MAGNOLIA AVE., SUITE 1000  
ORLANDO, FL 32803  
CONTRACT NO.: EIU96  
VENDOR NO.: F130746510001

FDOT PROJECT MANAGERS:

KIRBY RADFORD  
JOSEPH LAUK, P.E.  
TRACY PADULA

GOVERNING STANDARD PLANS:

Florida Department of Transportation, FY2022-23 Standard Plans for Road and  
Bridge Construction and applicable Interim Revisions (IRs).

Standard Plans for Road Construction and associated IRs are available at the  
following website: <http://www.fdot.gov/design/standardplans>

GOVERNING STANDARD SPECIFICATIONS:

Florida Department of Transportation, January 2022 Standard Specifications  
for Road and Bridge Construction at the following website:  
<http://www.fdot.gov/programmanagement/Implemented/SpecBooks>

CONSTRUCTION CONTRACT NO.	FISCAL YEAR	SHEET NO.
EIU96	23	S-1

12/15/2022 4:27:45 PM rwatson \\dewberry.dewberry\root\local\Offices\Orlando\Projects\Connect\WORKSETS\FDOT\44787715201\signing\TABQSP01.dgn

TABULATION OF QUANTITIES

PAY ITEM NO.	DESCRIPTION	UNIT	SHEET NUMBERS														GRAND TOTAL	
			S - 4		S - 5		S - 6											
			PLAN	FINAL	PLAN	FINAL	PLAN	FINAL	PLAN	FINAL	PLAN	FINAL	PLAN	FINAL	PLAN	FINAL	PLAN	FINAL
700-1-11	SINGLE POST SIGN, F&I GROUND MOUNT, UP TO 12 SF	AS																
700-1-12	SINGLE POST SIGN, F&I GROUND MOUNT, 12-20 SF	AS																
700-1-13	SINGLE POST SIGN, F&I GROUND MOUNT, 21-30 SF	AS																
700-1-60	SINGLE POST SIGN, REMOVE	AS																
700-3-501	SIGN PANEL, RELOCATE, UP TO 12 SF	EA																
705-11-1	DELINEATOR, FLEXIBLE TUBULAR	EA																
706-1-3	RAISED PAVEMENT MARKER, TYPE B	EA																
710-11-290	PAINTED PAVEMENT MARKINGS, STANDARD, YELLOW, ISLAND NOSE	SF																
710-90	PAINTED PAVEMENT MARKINGS, FINAL SURFACE	LS																
*	REFLECTIVE PAVEMENT MARKERS	EA																
	WHITE/RED																	
	YELLOW/YELLOW																	
*	PAINTED PAVEMENT MARKINGS, STD, WHITE, SOLID, 6"	GM																
*	PAINTED PAVEMENT MARKINGS, STD, WHITE, SOLID FOR INTERCHANGE AND URBAN ISLAND, 8"	GM																
*	PAINTED PAVEMENT MARKINGS, STD, WHITE, SOLID FOR DIAGONAL OR CHEVRON, 18"	LF																
*	PAINTED PAVEMENT MARKINGS, STD, WHITE, 2-4 DOTTED GUIDELINE/ 6-10 DOTTED EXTENSION, 6"	GM																
*	PAINTED PAVEMENT MARKINGS, STD, WHITE, SOLID FOR STOPLINE OR CROSSWALK, 24"	LF																
*	PAINTED PAVEMENT MARKINGS, STD, WHITE, ARROW	EA																
*	PAINTED PAVEMENT MARKINGS, STD, YELLOW, SOLID 6"	GM																
*	PAINTED PAVEMENT MARKINGS, STD, YELLOW, SOLID, 18" FOR DIAGONALS AND CHEVRONS	LF																
*	PAINTED PAVEMENT MARKINGS, STD, YELLOW, 2-4 DOTTED GUIDELINE/6-10 DOTTED EXTENSION, 6"	GM																
*	PAINTED PAVEMENT MARKINGS, STD, YELLOW, ISLAND NOSE	SF																
711-11-102	THERMOPLASTIC, STD, WHITE, SOLID, 8" FOR INTERCHANGE AND URBAN ISLAND	GM																
711-11-124	THERMOPLASTIC, STD, WHITE, SOLID, 18" FOR DIAGONALS AND CHEVRONS	LF																
711-11-125	THERMOPLASTIC, STD, WHITE, SOLID 24" FOR STOPLINE OR CROSSWALK	LF																
711-11-141	THERMOPLASTIC, STD, WHITE, 2-4 DOTTED GUIDELINE/ 6-10 GAP EXTENSION, 6"	GM																
711-11-170	THERMOPLASTIC, STD, WHITE, ARROW	EA																
711-11-224	THERMOPLASTIC, STD, YELLOW, SOLID, 18" FOR DIAGONALS AND CHEVRONS	LF																
711-11-241	THERMOPLASTIC, STD, YELLOW, 2-4 DOTTED GUIDE LINE /6-10 DOTTED EXTENSION LINE, 6"	GM																
711-16-101	THERMOPLASTIC, STD - OTHER SURFACES, WHITE, SOLID, 6"	GM																
711-16-201	THERMOPLASTIC, STD - OTHER SURFACES, YELLOW, SOLID, 6"	GM																

PAY ITEM NOTES

\* THESE QUANTITIES ARE PAID FOR UNDER PAINTED PAVEMENT MARKINGS (FINAL SURFACE), LUMP SUM - ITEM NO. 710-90. THE QUANTITIES SHOWN ARE FOR ONE APPLICATION; SEE SPECIFICATION 710 FOR THE NUMBER OF APPLICATIONS REQUIRED.

REVISIONS				ENGINEER OF RECORD		STATE OF FLORIDA DEPARTMENT OF TRANSPORTATION			TABULATION OF QUANTITIES	SHEET NO.
DATE	DESCRIPTION	DATE	DESCRIPTION	SCOTT M. BICKAR LICENSE NUMBER: 82643 DEWBERRY ENGINEERS INC. 800 NORTH MAGNOLIA AVENUE SUITE 1000 ORLANDO, FL 32803		ROAD NO.	COUNTY	FINANCIAL PROJECT ID		
						SR 544	POLK COUNTY	44787715201		S-2

THE OFFICIAL RECORD OF THIS SHEET IS THE ELECTRONIC FILE DIGITALLY SIGNED AND SEALED UNDER RULE 61G15-23.004, F.A.C.

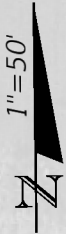
12/15/2022 4:27:45 PM rwatson \\dewberry\root\local\offices\Orlando\Projects\Connect\WORKSETS\FDOT\44787715201\signing\GMW\SP01.dgn

GENERAL NOTES

1. IT SHOULD BE NOTED THAT EXISTING SIGNAGE REFLECTS INVENTORY DATA COLLECTED DURING PLANS PREPARATION AND IT IS POSSIBLE THAT ADDITIONAL SIGNS MAY BE PRESENT AT THE TIME OF CONSTRUCTION. COORDINATE THE DISPOSITION OF SUCH SIGNS WITH THE ENGINEER-OF-RECORD.
2. THE PAVEMENT MARKINGS AT ALL EXISTING/PROPOSED INTERFACE LOCATIONS ARE TO MATCH IN TERMS OF ALIGNMENT AND COLOR. UNLESS OTHERWISE NOTED OR STATIONED IN THE PLANS, ALL PROPOSED SIGNS ARE TO BE REPLACED AT THE EXISTING SIGN LOCATIONS. SIGNS THAT ARE TO BE REMOVED FROM THE PROJECT SHOULD BE STOCKPILED SEPARATELY FROM THOSE THAT ARE TO BE RELOCATED.
3. REFLECTIVE PAVEMENT MARKERS ARE NOT TO BE PLACED ON SIDE STREET CENTERLINES, UNLESS OTHERWISE NOTED ON THE PLANS.

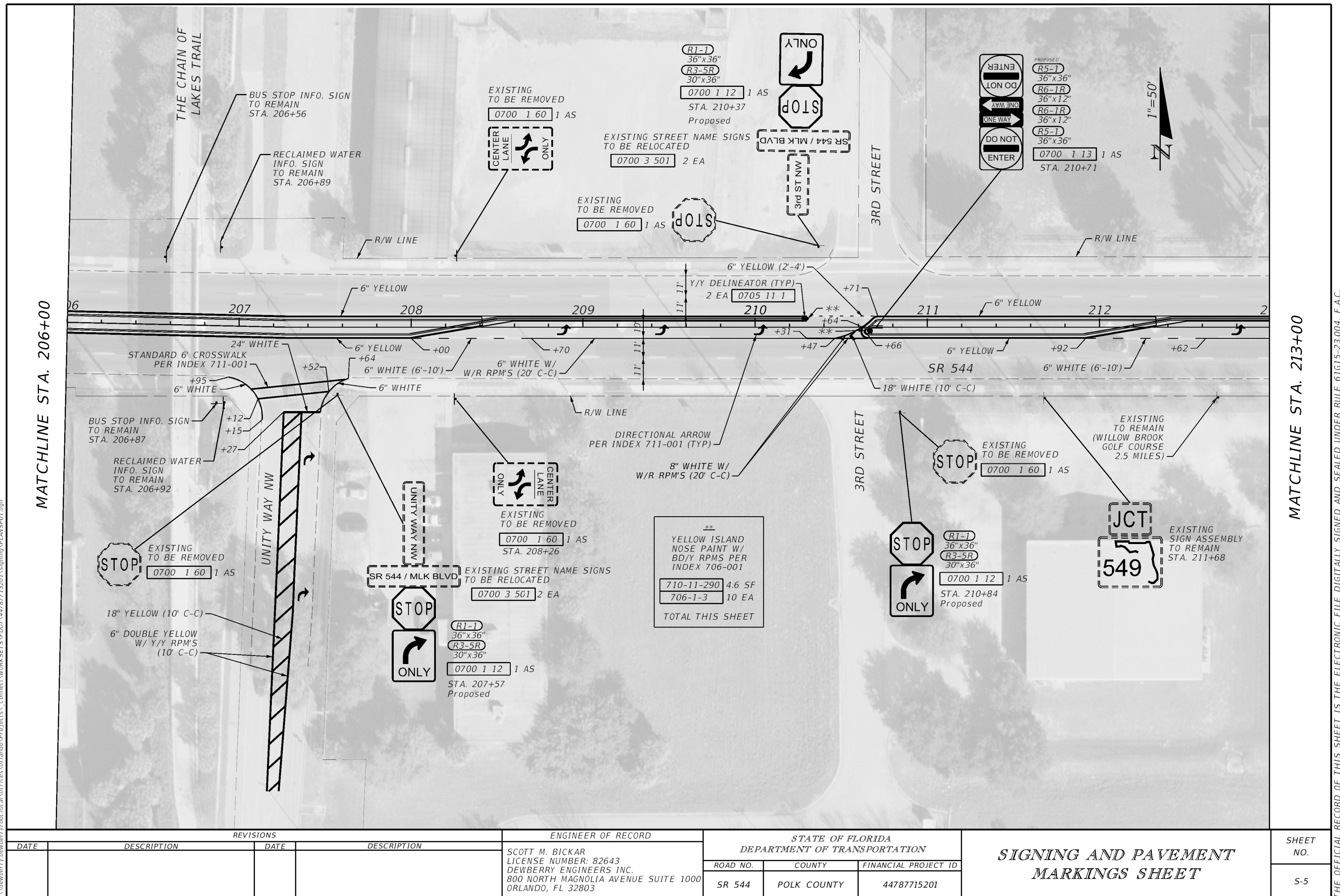
REVISIONS				ENGINEER OF RECORD		STATE OF FLORIDA DEPARTMENT OF TRANSPORTATION			GENERAL NOTES	SHEET NO.
DATE	DESCRIPTION	DATE	DESCRIPTION	SCOTT M. BICKAR LICENSE NUMBER: 82643 DEWBERRY ENGINEERS INC. 800 NORTH MAGNOLIA AVENUE SUITE 1000 ORLANDO, FL 32803		ROAD NO.	COUNTY	FINANCIAL PROJECT ID		
						SR 544	POLK COUNTY	44787715201		S-3

THE OFFICIAL RECORD OF THIS SHEET IS THE ELECTRONIC FILE DIGITALLY SIGNED AND SEALED UNDER RULE 61G15-23.004, F.A.C.



5TH ST NW

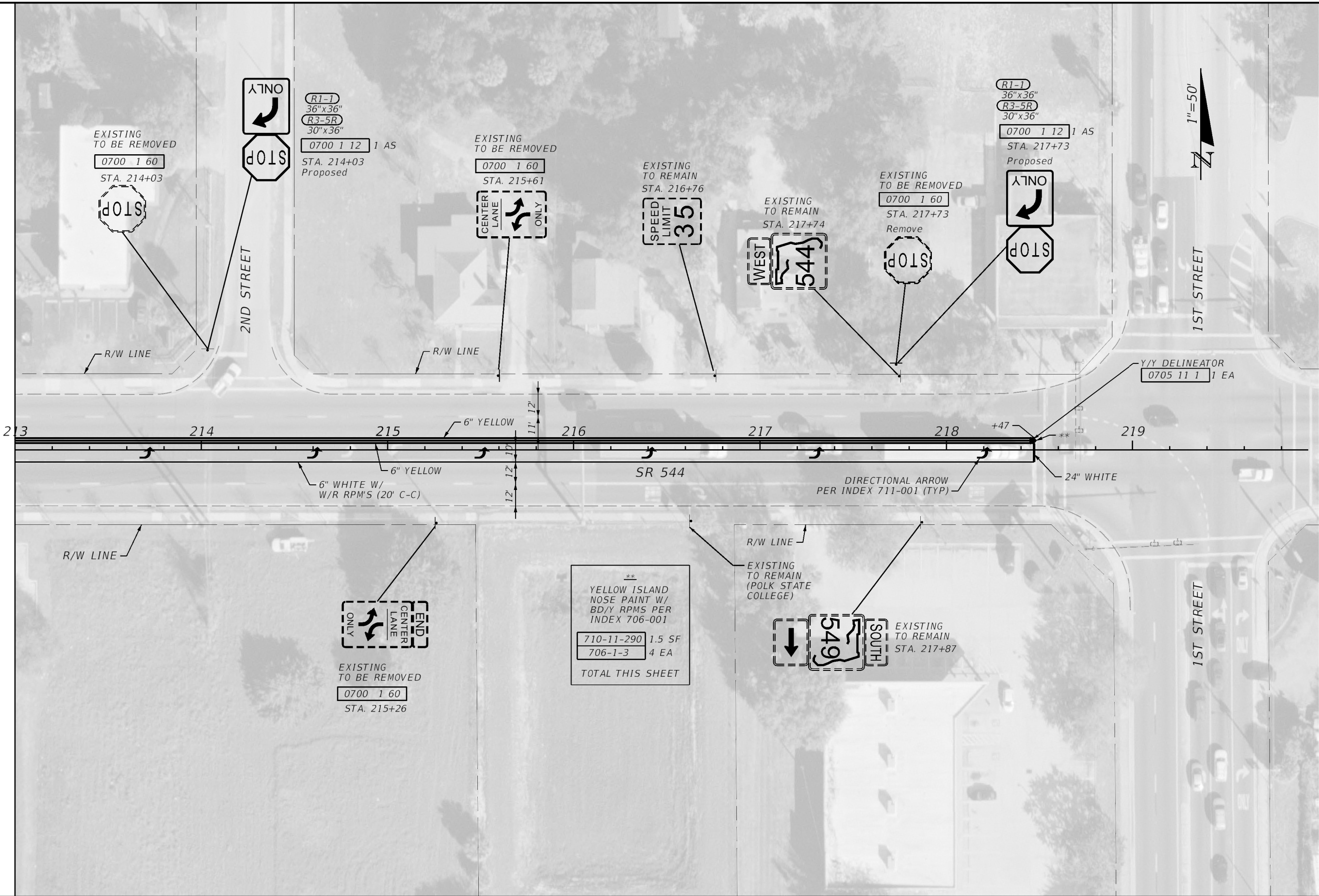
THE OFFICIAL RECORD OF THIS SHEET IS THE ELECTRONIC FILE DIGITALLY SIGNED AND SEALED UNDER RULE 61G15-23.004, F.A.C.





12/15/2022 4:28:57 PM rwatson \\dewberry-dewberryroot\local\Offices\Orlando\Projects\Connect\WORKSETS\FDOT\44787715201\signing\PLANS\PO1.dgn

MATCHLINE STA. 213+00



REVISIONS				ENGINEER OF RECORD	STATE OF FLORIDA DEPARTMENT OF TRANSPORTATION			SIGNING AND PAVEMENT MARKINGS SHEET	SHEET NO.
DATE	DESCRIPTION	DATE	DESCRIPTION	SCOTT M. BICKAR LICENSE NUMBER: 82643 DEWBERRY ENGINEERS INC. 800 NORTH MAGNOLIA AVENUE SUITE 1000 ORLANDO, FL 32803	ROAD NO.	COUNTY	FINANCIAL PROJECT ID		S-6
					SR 544	POLK COUNTY	44787715201		

THE OFFICIAL RECORD OF THIS SHEET IS THE ELECTRONIC FILE DIGITALLY SIGNED AND SEALED UNDER RULE 61G15-23.004, F.A.C.