

**CONTRACT PLANS COMPONENTS**

ROADWAY PLANS  
SIGNING AND PAVEMENT MARKING PLANS  
SIGNALIZATION PLANS

A DETAILED INDEX APPEARS ON THE  
KEY SHEET OF EACH COMPONENT

**INDEX OF ROADWAY PLANS**

SHEET NO.	SHEET DESCRIPTION
1	KEY SHEET
2	TYPICAL SECTION
3 - 4	PROJECT CONTROL
5	GENERAL NOTES
6 - 8	ROADWAY PLAN
9 - 12	CROSS SECTIONS
13	TEMPORARY TRAFFIC CONTROL PLAN
14 - 17	PEDESTRIAN TRAFFIC CONTROL PLAN
18 - 20	UTILITY ADJUSTMENTS
21 - 22	POTENTIAL CONTAMINATION
*UTV-1 - UTV-2	VERIFIED UTILITY LOCATE SHEETS

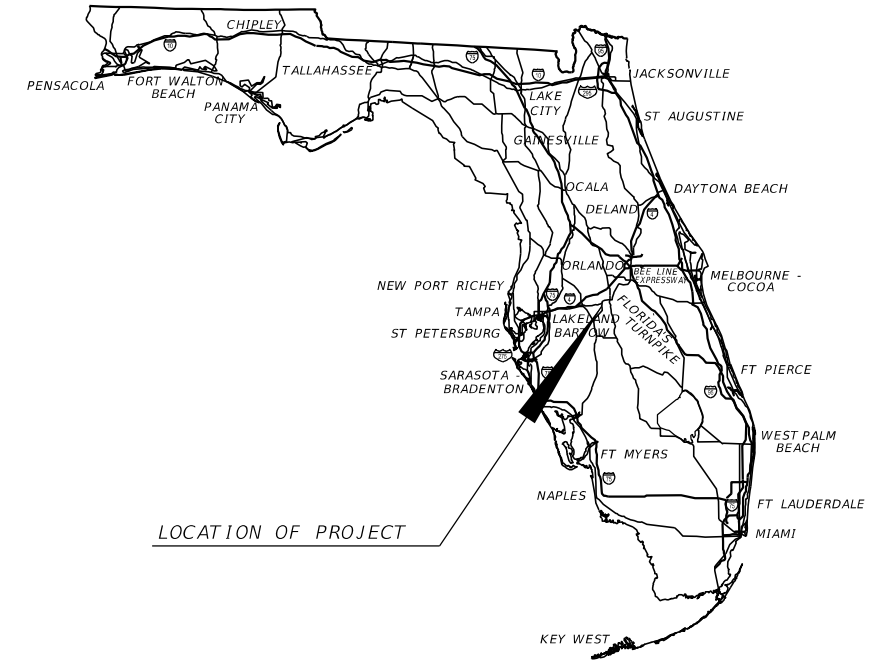
\*THESE SHEETS ARE INCLUDED IN THE INDEX OF ROADWAY  
PLANS ONLY TO INDICATE THAT THEY ARE PART OF THE  
ROADWAY PLANS SET. THESE SHEETS ARE CONTAINED IN A  
SEPARATE DIGITALLY SIGNED AND SEALED DOCUMENT

STATE OF FLORIDA  
**DEPARTMENT OF TRANSPORTATION**

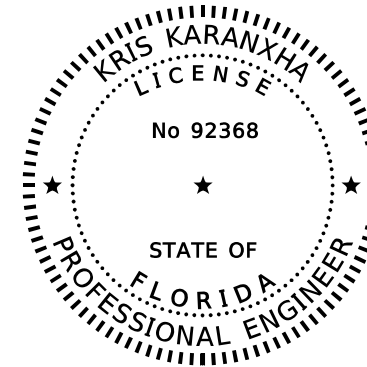
**CONTRACT PLANS**

FINANCIAL PROJECT ID 447874-1-52-01  
(FEDERAL FUNDS)  
POLK COUNTY (16140)  
STATE ROAD NO. 544 (HAVENDALE BLVD)  
AT US 17 (8TH ST NW)

PROJECT LOCATION URL: <https://tinyurl.com/ym92rvrd>  
PROJECT LIMITS: BEGIN MP 3.000 - END MP 3.224  
EXCEPTIONS: NONE  
BRIDGE LIMITS: NONE  
RAILROAD CROSSING: NONE



LOCATION OF PROJECT



THIS ITEM HAS BEEN DIGITALLY  
SIGNED AND SEALED BY



ON THE DATE ADJACENT TO THE SEAL  
PRINTED COPIES OF THIS DOCUMENT ARE  
NOT CONSIDERED SIGNED AND SEALED  
AND THE SIGNATURE MUST BE VERIFIED  
ON ANY ELECTRONIC COPIES.  
THE ABOVE NAMED PROFESSIONAL IS  
RESPONSIBLE FOR THE FOLLOWING SHEETS  
IN ACCORDANCE WITH RULE 61G15-23.004, F.A.C.

ROADWAY PLANS  
ENGINEER OF RECORD:

KRIS KARANXHA, PE.  
P.E. LICENSE NUMBER 92368  
FLORIDA TRANSPORTATION ENGINEERING, INC.  
11458 N 53RD STREET  
TAMPA, FLORIDA, 33617  
PHONE NO.: (813) 989-0729  
CONTRACT NO.: CA319  
VENDOR NO.: F65-0183924

FDOT PROJECT MANAGER:

PHILIP MENKE, P.E.

CONSTRUCTION CONTRACT NO.	FISCAL YEAR	SHEET NO.
T1876	24	1

PHASE IV  
FEBRUARY 21, 2023

**GOVERNING STANDARD PLANS:**

Florida Department of Transportation, FY2023-24 Standard Plans for Road and Bridge Construction and applicable Interim Revisions (IRs).

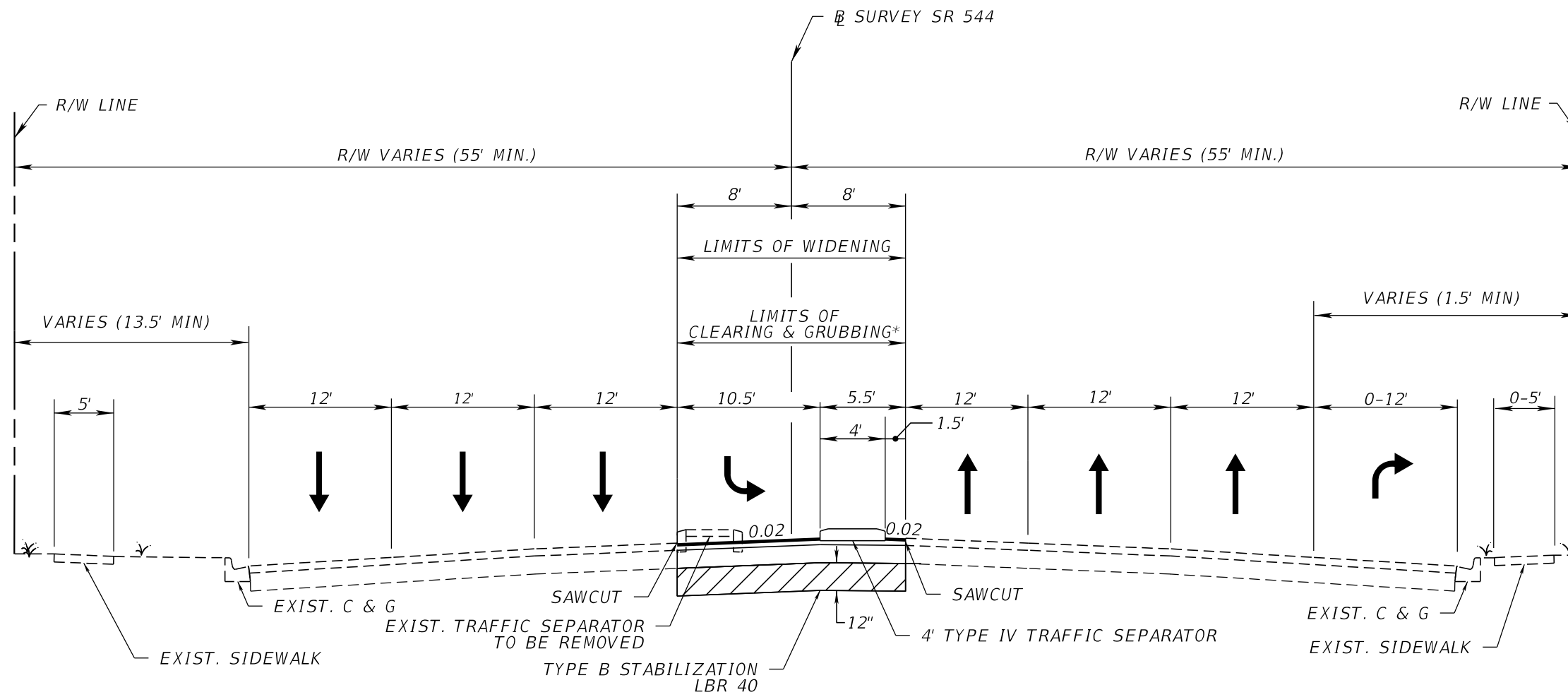
Standard Plans for Road Construction and associated IRs are available at the following website: <http://www.fdot.gov/design/standardplans>

APPLICABLE IRs: IR - -

Standard Plans for Bridge Construction are included in the Structures Plans Component

**GOVERNING STANDARD SPECIFICATIONS:**

Florida Department of Transportation, FY2023-24 Standard Specifications for Road and Bridge Construction at the following website: <http://www.fdot.gov/programmanagement/Implemented/SpecBooks>



**TYPICAL SECTION**  
**SR 544 (HAVENDALE BOULEVARD NW)**  
**STA. 265+84.75 TO STA. 266+82.39 (BK)**  
**STA. 266+82.25 (AH) TO STA. 277+12.00**  
 (WB DIRECTIONAL MEDIAN SHOWN, EB MEDIAN DIRECTIONAL IS MIRROR IMAGE.)  
 \*SEE ROADWAY PLAN SHEETS FOR LIMITS OF MILLING AND RESURFACING

**WIDENING**

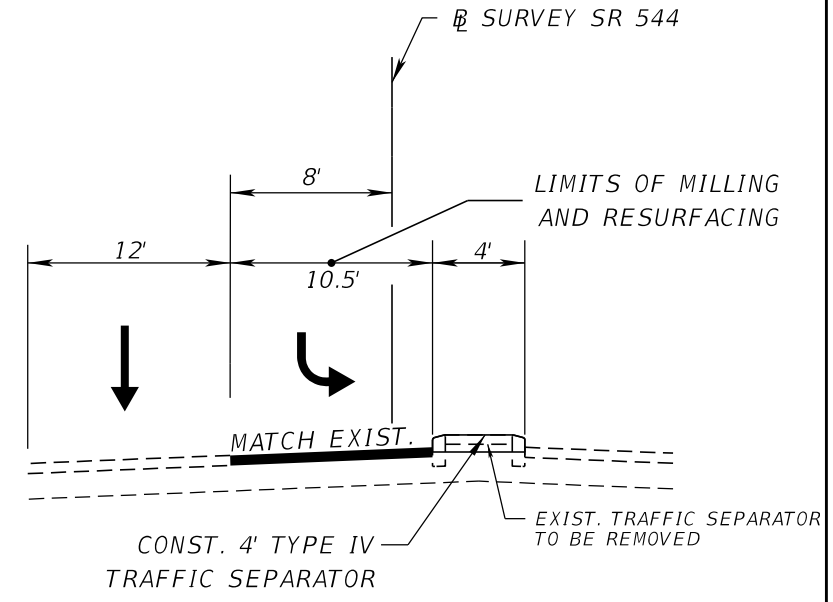
---

OPTIONAL BASE GROUP 6  
 TYPE SP STRUCTURAL COURSE (TRAFFIC C) (3")  
 FRICTION COURSE FC-12.5 (1 1/2") (PG 76-22)

**MILLING & RESURFACING**

---

MILLING EXISTING PAVEMENT (1 1/2" DEPTH)  
 FRICTION COURSE FC-12.5 (1 1/2") (PG 76-22)



RESURFACING PARTIAL DETAIL  
 SR 544 (HAVENDALE BLVD.)  
 STA. 265+84.79 TO STA. 277+12.00

**TRAFFIC DATA**

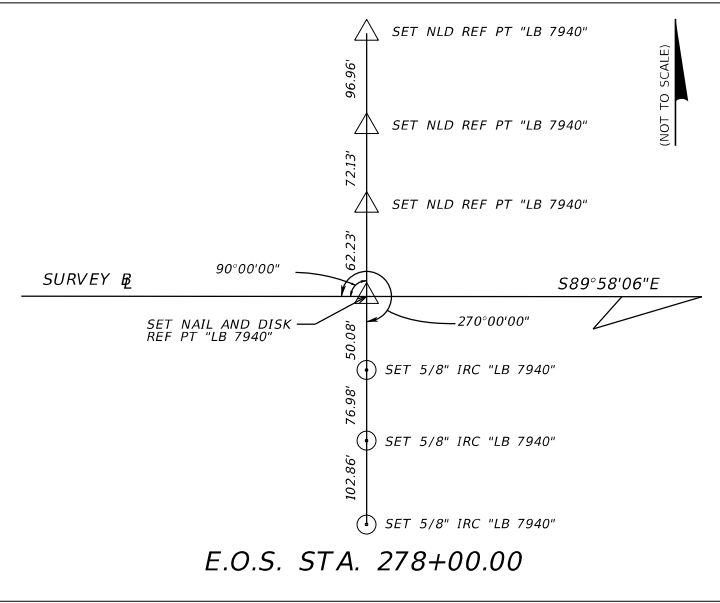
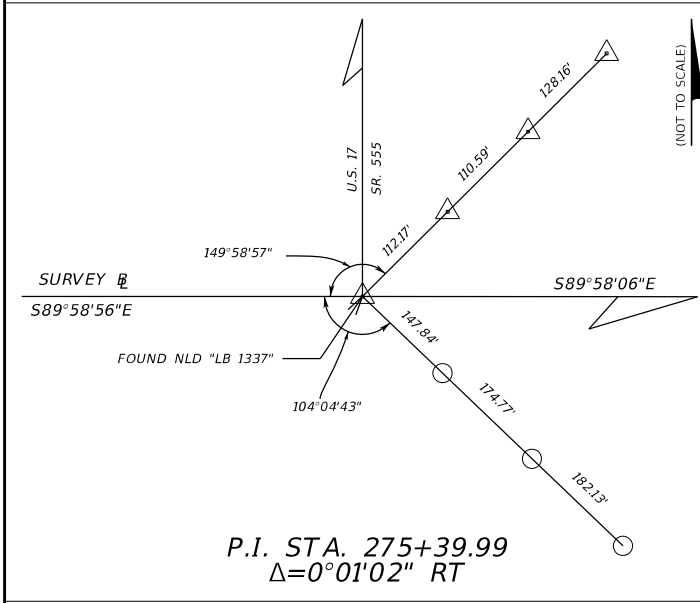
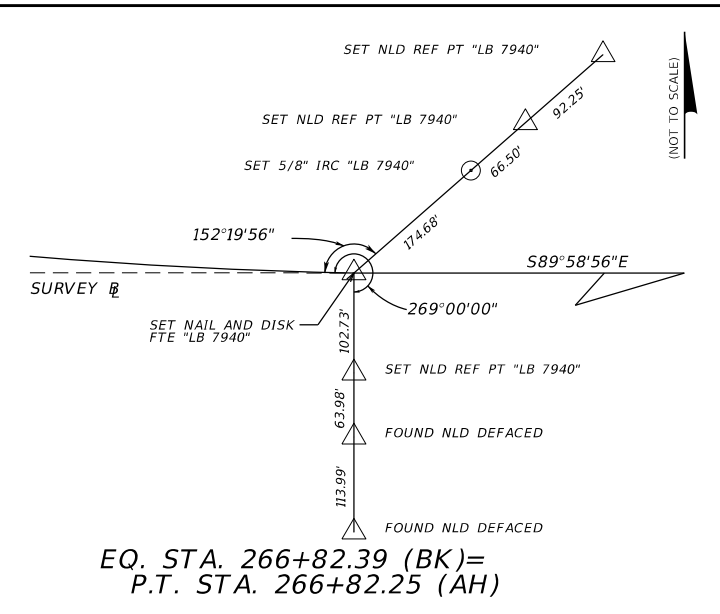
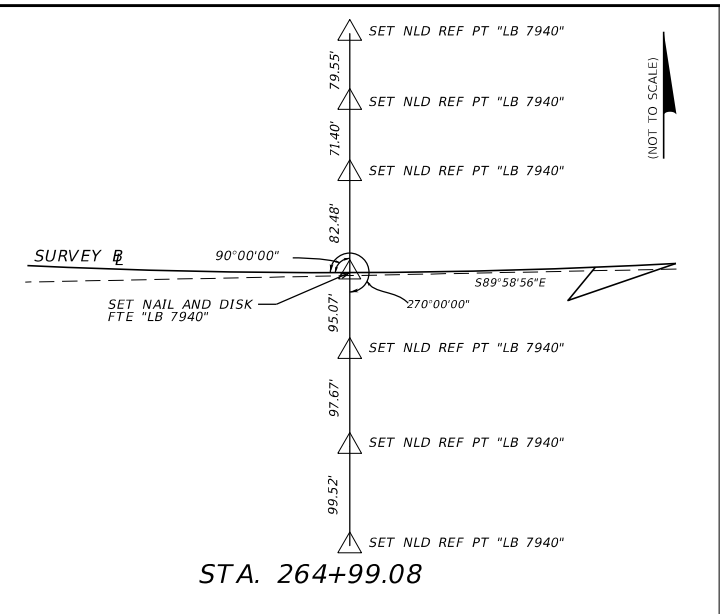
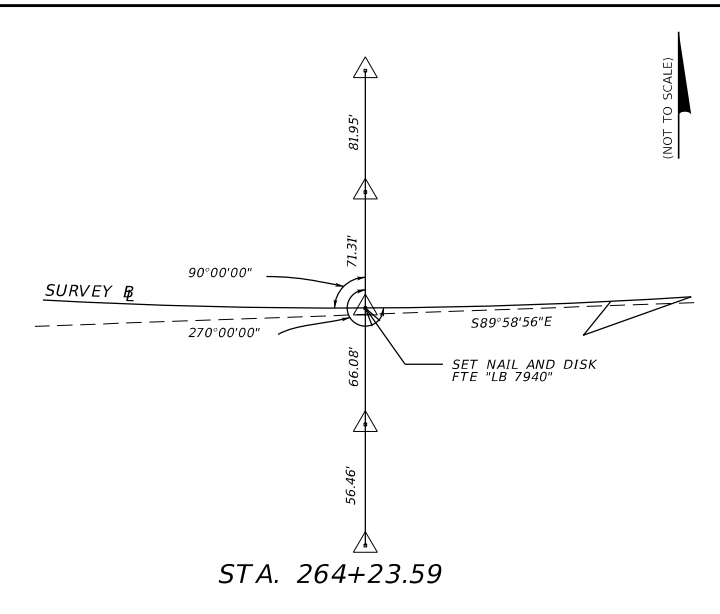
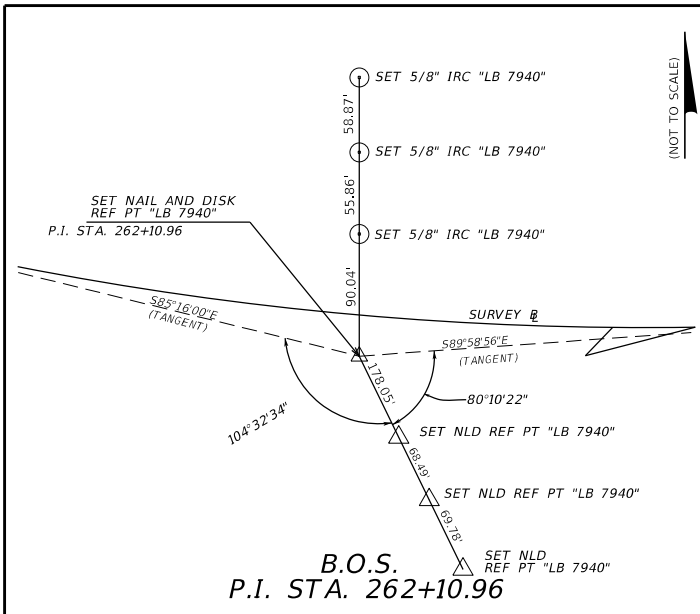
CURRENT YEAR = 2022 AADT = 30500  
 K = 9 % D = 55.3% T = 7.8% (24 HOUR)  
 DESIGN SPEED = 45 MPH  
 CONTEXT CLASS = C4

2/21/2023 2:41:10 PM BenjaminKelk S:\Projects\FDOT\44787415201\Roadway\Typical\TPSRD01.dgn

REVISIONS				ENGINEER OF RECORD		STATE OF FLORIDA DEPARTMENT OF TRANSPORTATION			SHEET NO.
DATE	DESCRIPTION	DATE	DESCRIPTION	KRIS KARANXHA LICENSE NUMBER: 92368 FLORIDA TRANSPORTATION ENGINEERING, INC. 11458 NORTH 53RD STREET TAMPA, FLORIDA 33617		ROAD NO.	COUNTY	FINANCIAL PROJECT ID	
						SR 544	POLK	447874-1-52-01	2

**TYPICAL SECTION**

THE OFFICIAL RECORD OF THIS SHEET IS THE ELECTRONIC FILE DIGITALLY SIGNED AND SEALED UNDER RULE 61G15-23.004, F.A.C.



LEGEND:  
 ▲ FOUND PK NAIL & DISK "KEITH & SCHNARS PA LB 1337"  
 △ NAIL & DISK (STAMPED AS NOTED)  
 ○ FOUND 5/8" IRON ROD w/ "KEITH & SCHNARS" CAP  
 ⊙ 5/8" IRON ROD CAP (STAMPED AS NOTED)  
 B = SURVEY BASELINE  
 P.I.= POINT OF INTERSECTION  
 P.T.= POINT OF TANGENT  
 STA.= STATION  
 AH= AHEAD  
 BK= BACK  
 LB = LICENSED BUSINESS  
 B.O.S.= BEGINNING OF SURVEY  
 E.O.S.= END OF SURVEY  
 NLD = NAIL  
 REF = REFERENCE  
 PT. = POINT  
 FTE = FLORIDA TRANSPORTATION ENGINEERING

REVISIONS				ENGINEER OF RECORD		STATE OF FLORIDA DEPARTMENT OF TRANSPORTATION			SHEET NO.
DATE	DESCRIPTION	DATE	DESCRIPTION			ROAD NO.	COUNTY	FINANCIAL PROJECT ID	
				KRIS KARANXHA, P.E. LICENSE NUMBER: 92368 FLORIDA TRANSPORTATION ENGINEERING, INC. 11458 NORTH 53RD STREET TAMPA, FLORIDA 33617		SR 544	POLK	447874-1-52-01	PROJECT CONTROL 3

2/21/2023 2:41:10 PM BenjaminKelk S:\Projects\FDOT\447874-1-52-01\Survey\CTLSRD01.dgn

THE OFFICIAL RECORD OF THIS SHEET IS THE ELECTRONIC FILE DIGITALLY SIGNED AND SEALED UNDER RULE 61G15-23.004, F.A.C.

Florida Department of Transportation District One  
 Vertical Control Data Sheet

DATUM  
 NGVD 1929       
 NAVD 1988 X

Monument Name or Designation: BM1 Elevation Feet: 164.60  
 State Road No.: SR 544 County: POLK  
 Section: 17 Township: 28 S Range: 26 E Roadway Section I.D.: 16140-000  
 Establishing Firm: FLORIDA TRANSPORTATION ENG., INC. Field Book No.: 504822  
 Established: X Recovered:      Financial Project ID: 447874-1

State Plane Coordinates: N (Y) = 1348861 E (X) = 740641  
 (Nearest Foot)  
 Base Line Station and Offset: 265+51.19 67.51' LT  
 Description of Monument: 4"X4" CONCRETE MONUMENT STAMPED "BM1"

Distance and Direction from Nearest Intersection: FROM THE INTERSECTION OF SR 544 AND 8TH STREET NW, HEAD WEST FOR APPROXIMATELY 975 FEET TO THE POINT ON THE NORTH SIDE OF THE ROAD, 6.8 FEET OFF THE WESTERLY EDGE OF PAVEMENT.

Field Location Sketch

Florida Department of Transportation District One  
 Vertical Control Data Sheet

DATUM  
 NGVD 1929       
 NAVD 1988 X

Monument Name or Designation: BM2 Elevation Feet: 163.688  
 State Road No.: SR 544 County: POLK  
 Section: 17 Township: 28 S Range: 26 E Roadway Section I.D.: 16140-000  
 Establishing Firm: FLORIDA TRANSPORTATION ENG., INC. Field Book No.: 504822  
 Established: X Recovered:      Financial Project ID: 447874-1

State Plane Coordinates: N (Y) = 1348863 E (X) = 740979  
 (Nearest Foot)  
 Base Line Station and Offset: 268+90.15 69.92' LT  
 Description of Monument: 4"X4" CONCRETE MONUMENT STAMPED "BM2"

Distance and Direction from Nearest Intersection: FROM THE INTERSECTION OF SR 544 AND 8TH STREET NW, HEAD WEST FOR APPROXIMATELY 625 FEET TO THE POINT ON THE NORTH SIDE OF THE ROAD, 5.95 FEET OFF THE WESTERLY EDGE OF PAVEMENT.

Field Location Sketch

Florida Department of Transportation District One  
 Vertical Control Data Sheet

DATUM  
 NGVD 1929       
 NAVD 1988 X

Monument Name or Designation: BM3 Elevation Feet: 164.581  
 State Road No.: SR 544 County: POLK  
 Section: 17 Township: 28 S Range: 26 E Roadway Section I.D.: 16140-000  
 Establishing Firm: FLORIDA TRANSPORTATION ENG., INC. Field Book No.: 504822  
 Established: X Recovered:      Financial Project ID: 447874-1

State Plane Coordinates: N (Y) = 1348856 E (X) = 741331  
 (Nearest Foot)  
 Base Line Station and Offset: 272+42.78 63.54' LT  
 Description of Monument: 4"X4" CONCRETE MONUMENT STAMPED "BM3"

Distance and Direction from Nearest Intersection: FROM THE INTERSECTION OF SR 544 AND 8TH STREET NW, HEAD WEST FOR APPROXIMATELY 310 FEET TO THE POINT ON THE NORTH SIDE OF THE ROAD, 23 FEET OFF THE WESTERLY EDGE OF PAVEMENT OF 9' STREET NW.

Field Location Sketch

Florida Department of Transportation District One  
 Vertical Control Data Sheet

DATUM  
 NGVD 1929       
 NAVD 1988 X

Monument Name or Designation: BM4 Elevation Feet: 164.581  
 State Road No.: SR 544 County: POLK  
 Section: 17 Township: 28 S Range: 26 E Roadway Section I.D.: 16140-000  
 Establishing Firm: FLORIDA TRANSPORTATION ENG., INC. Field Book No.: 504822  
 Established: X Recovered:      Financial Project ID: 447874-1

State Plane Coordinates: N (Y) = 1348856 E (X) = 741331  
 (Nearest Foot)  
 Base Line Station and Offset: 272+42.78 63.54' LT  
 Description of Monument: 4"X4" CONCRETE MONUMENT STAMPED "BM4"

Distance and Direction from Nearest Intersection: FROM THE INTERSECTION OF SR 544 AND 8TH STREET NW, HEAD WEST FOR APPROXIMATELY 310 FEET TO THE POINT ON THE NORTH SIDE OF THE ROAD, 23 FEET OFF THE WESTERLY EDGE OF PAVEMENT OF 9' STREET NW.

Field Location Sketch

Florida Department of Transportation District One  
 Vertical Control Data Sheet

DATUM  
 NGVD 1929       
 NAVD 1988 X

Monument Name or Designation: BM5 Elevation Feet: 164.581  
 State Road No.: SR 544 County: POLK  
 Section: 17 Township: 28 S Range: 26 E Roadway Section I.D.: 16140-000  
 Establishing Firm: FLORIDA TRANSPORTATION ENG., INC. Field Book No.: 504822  
 Established: X Recovered:      Financial Project ID: 447874-1

State Plane Coordinates: N (Y) = 1348856 E (X) = 741331  
 (Nearest Foot)  
 Base Line Station and Offset: 272+42.78 63.54' LT  
 Description of Monument: 4"X4" CONCRETE MONUMENT STAMPED "BM5"

Distance and Direction from Nearest Intersection: FROM THE INTERSECTION OF SR 544 AND 8TH STREET NW, HEAD WEST FOR APPROXIMATELY 310 FEET TO THE POINT ON THE NORTH SIDE OF THE ROAD, 23 FEET OFF THE WESTERLY EDGE OF PAVEMENT OF 9' STREET NW.

Field Location Sketch

Florida Department of Transportation District One  
 Vertical Control Data Sheet

DATUM  
 NGVD 1929       
 NAVD 1988 X

Monument Name or Designation: BM6 Elevation Feet: 163.688  
 State Road No.: SR 544 County: POLK  
 Section: 17 Township: 28 S Range: 26 E Roadway Section I.D.: 16140-000  
 Establishing Firm: FLORIDA TRANSPORTATION ENG., INC. Field Book No.: 504822  
 Established: X Recovered:      Financial Project ID: 447874-1

State Plane Coordinates: N (Y) = 1348863 E (X) = 740979  
 (Nearest Foot)  
 Base Line Station and Offset: 268+90.15 69.92' LT  
 Description of Monument: 4"X4" CONCRETE MONUMENT STAMPED "BM6"

Distance and Direction from Nearest Intersection: FROM THE INTERSECTION OF SR 544 AND 8TH STREET NW, HEAD WEST FOR APPROXIMATELY 625 FEET TO THE POINT ON THE NORTH SIDE OF THE ROAD, 5.95 FEET OFF THE WESTERLY EDGE OF PAVEMENT.

Field Location Sketch

REVISIONS		REVISIONS		ENGINEER OF RECORD		STATE OF FLORIDA DEPARTMENT OF TRANSPORTATION			SHEET NO.
DATE	DESCRIPTION	DATE	DESCRIPTION			ROAD NO.	COUNTY	FINANCIAL PROJECT ID	
				KRIS KARANXHA LICENSE NUMBER: 92368 FLORIDA TRANSPORTATION ENGINEERING, INC. 11458 NORTH 53RD STREET TAMPA, FLORIDA 33617		SR 544	POLK	447874-1-52-01	4
<b>PROJECT CONTROL</b>									

GENERAL NOTES

=====

1. ELEVATIONS ARE BASED ON NORTH AMERICAN VERTICAL DATUM OF 1988 (NAVD 88).
2. ALL SURVEY INFORMATION WAS OBTAINED FROM A LICENSED FLORIDA PROFESSIONAL SURVEYOR AND MAPPER AND UTILIZED AS SUPPORTING DATA IN THE PRODUCTION OF DESIGN PLANS AND FOR CONSTRUCTION ON SUBJECT PROJECT. THE PROFESSIONAL SURVEYOR AND MAPPER OF RECORD IS:  
 JEFFREY HAROLD SCOTT, P.S.M.  
 P.S.M. No: 5793  
 FLORIDA TRANSPORTATION ENGINEERING, INC.  
 11458 N. 53RD STREET  
 TAMPA, FL 33617
3. THE LOCATION(S) OF THE UTILITIES SHOWN IN THE PLANS (INCLUDING THOSE DESIGNATED Vv, Vh, AND Vvh) ARE BASED ON LIMITED INVESTIGATION TECHNIQUES AND SHOULD BE CONSIDERED APPROXIMATE ONLY. THE VERIFIED LOCATIONS/ELEVATIONS APPLY ONLY AT THE POINTS SHOWN. INTERPOLATIONS BETWEEN THESE POINTS HAVE NOT BEEN VERIFIED.
4. UTILITY/AGENCY OWNERS:
 

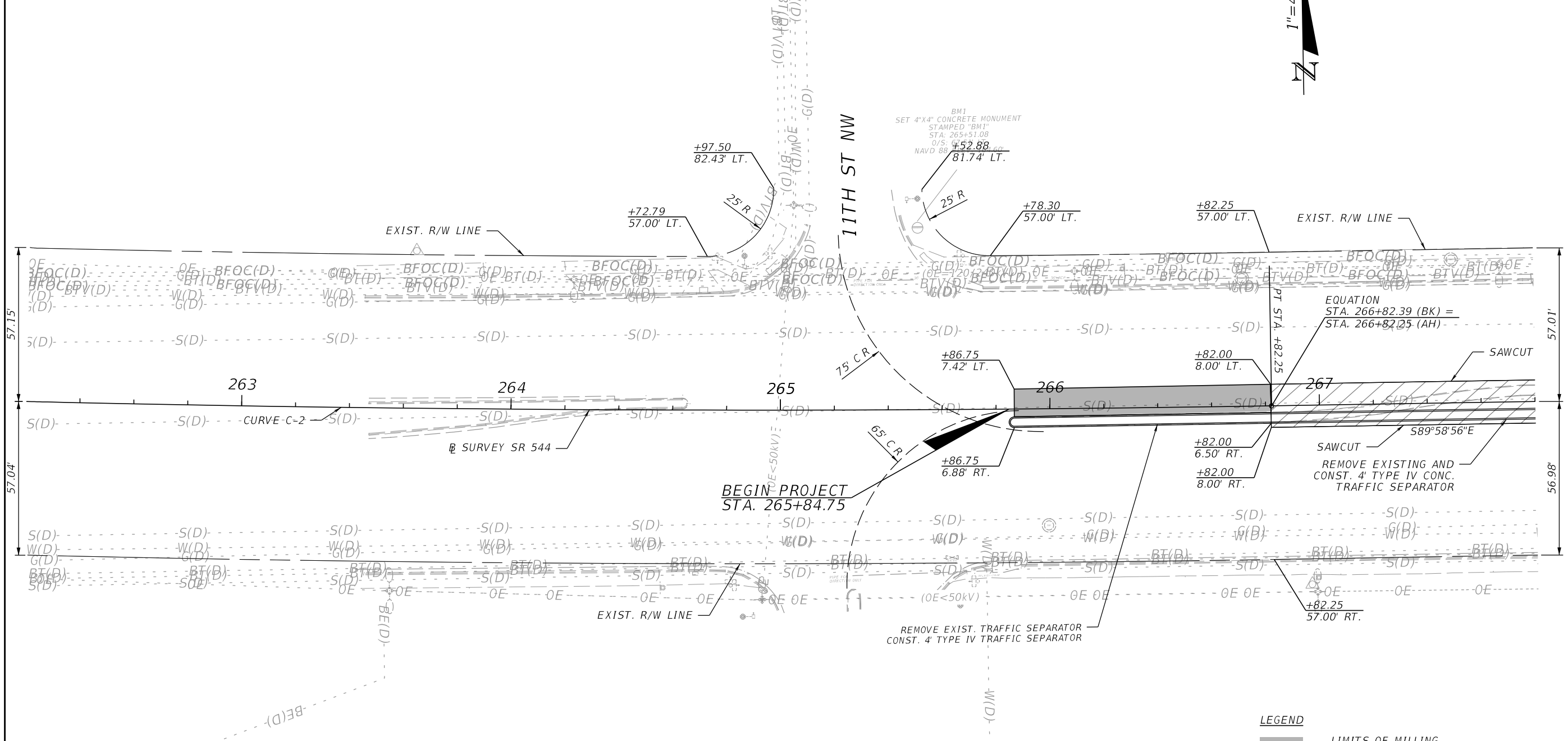
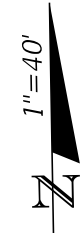
COMPANY	CONTACT	TELEPHONE NUMBERS
AT&T TRANSMISSION	GREG JACOBSON	(813)-342-0512
CENTURYLINK	KEN LUTZ	(863)-452-3185
LEVEL 3 COMMUNICATION DBA CENTURYLINK NATIONAL	RON PRARIO	(407)-754-0116
CITY OF WINTER HAVEN	MARK BOMBARD	(863)-298-5351
FLORIDA PUBLIC UTILITIES COMPANY	FOSTER CHATHAM	(863)-292-2933
FRONTIER FLORIDA, LLC	FRED VALDES	(863)-688-9714
SPECTRUM SUNSHINE STATES, LLC	DARIN DANIELS	(863)-333-4764
TAMPA ELECTRIC COMPANY	HEATHER LOVETT	(813)-275-3433
ZAYO GROUND, LLC	TESS BENTAYOU	(813)-363-6797
5. COORDINATE NATIONAL POLLUTANT DISCHARGE ELIMINATION SYSTEMS (NPDES) DEWATERING ACTIVITIES THROUGH THE PROJECT ENGINEER, DISTRICT CONTAMINATION IMPACT COORDINATOR, AND CONTAMINATION ASSESSMENT & REMEDIATION CONTRACTOR TO ENSURE FLORIDA DEPARTMENT OF ENVIRONMENTAL PROTECTION AND WATER MANAGEMENT DISTRICT COMPLIANCE. SEE PROJECT'S CONTAMINATION MEMORANDUM.

2/21/2023 2:41:11 PM BenjaminKelk S:\Projects\FDOT\44787415201\Roadway\GNWTRD01.dgn

REVISIONS				ENGINEER OF RECORD		STATE OF FLORIDA DEPARTMENT OF TRANSPORTATION			GENERAL NOTES	SHEET NO.
DATE	DESCRIPTION	DATE	DESCRIPTION	KRIS KARANXHA LICENSE NUMBER: 92368 FLORIDA TRANSPORTATION ENGINEERING, INC. 11458 NORTH 53RD STREET TAMPA, FLORIDA 33617		ROAD NO.	COUNTY	FINANCIAL PROJECT ID		5
								SR 544	POLK	447874-1-52-01

THE OFFICIAL RECORD OF THIS SHEET IS THE ELECTRONIC FILE DIGITALLY SIGNED AND SEALED UNDER RULE 61G15-23.004, F.A.C.

SR 544 / HAVENDALE BLVD



**CURVE DATA**  
 PI STA. = 262+10.96  
 Δ = 04° 42' 56" (LT)  
 D = 00° 30' 00"  
 T = 471.82  
 L = 943.10  
 R = 11,459.16  
 PC STA. = 257+39.14  
 PT STA. = 266+82.25  
 e = NC

**LEGEND**

	LIMITS OF MILLING AND RESURFACING
	LIMITS OF PAVEMENT WIDENING

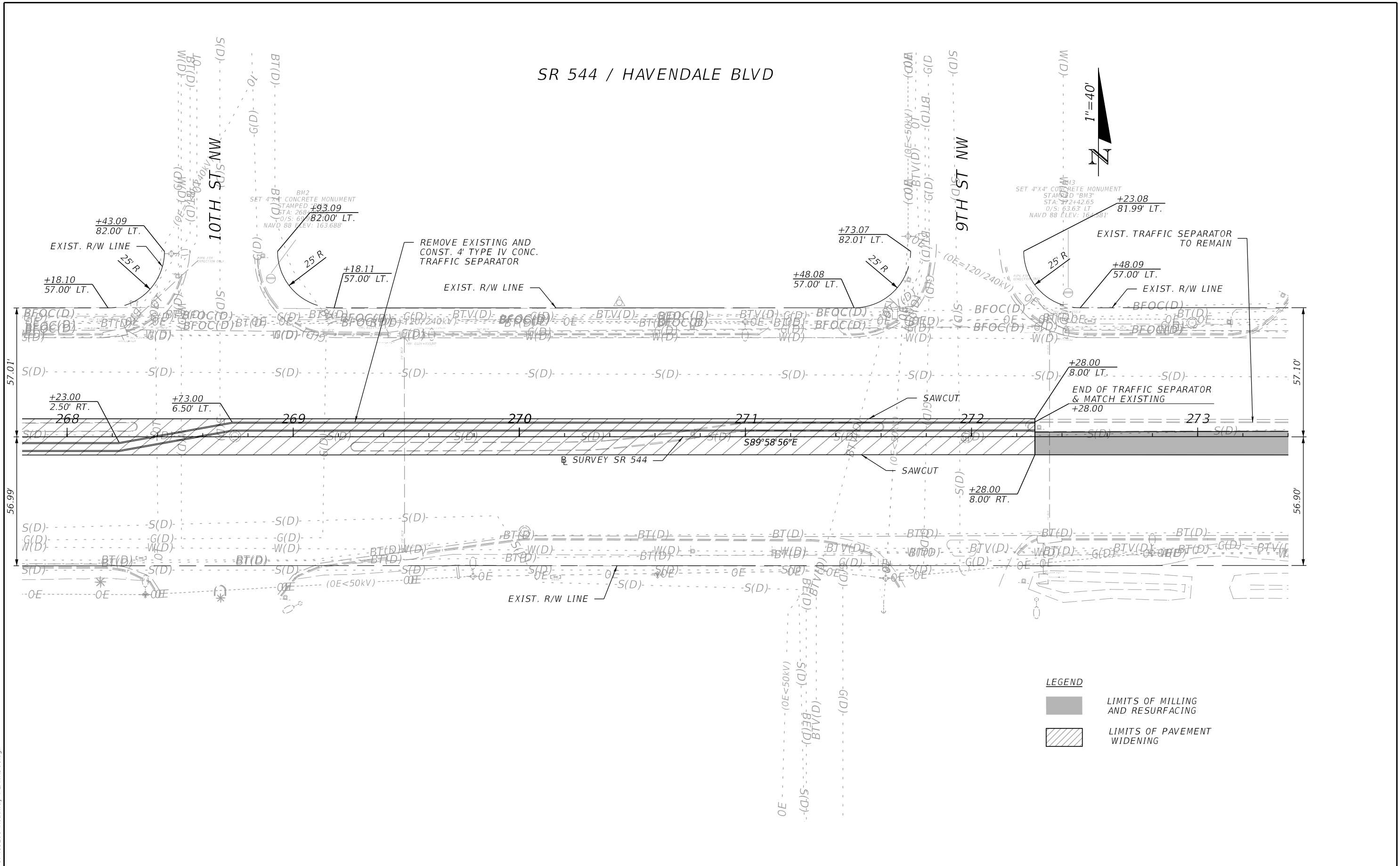
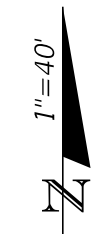
2/21/2023 2:41:15 PM BenjaminKelk S:\Projects\FDOT\44787415201\Roadway\PLANRD01.dgn

REVISIONS				ENGINEER OF RECORD		STATE OF FLORIDA DEPARTMENT OF TRANSPORTATION			SHEET NO.
DATE	DESCRIPTION	DATE	DESCRIPTION			ROAD NO.	COUNTY	FINANCIAL PROJECT ID	
				KRIS KARANXHA LICENSE NUMBER: 92368 FLORIDA TRANSPORTATION ENGINEERING, INC. 11458 NORTH 53RD STREET TAMPA, FLORIDA 33617		SR 544	POLK	447874-1-52-01	6

ROADWAY PLANS

THE OFFICIAL RECORD OF THIS SHEET IS THE ELECTRONIC FILE DIGITALLY SIGNED AND SEALED UNDER RULE 61G15-23.004, F.A.C.

SR 544 / HAVENDALE BLVD



**LEGEND**

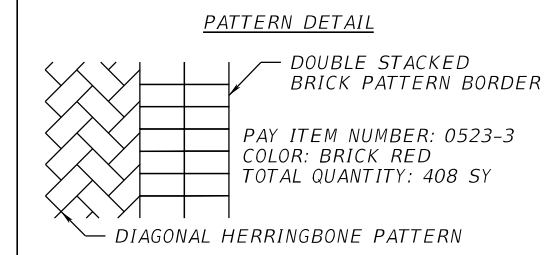
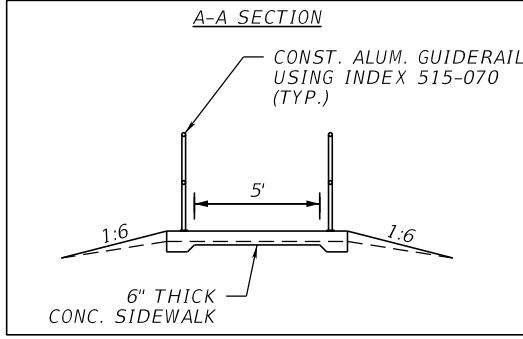
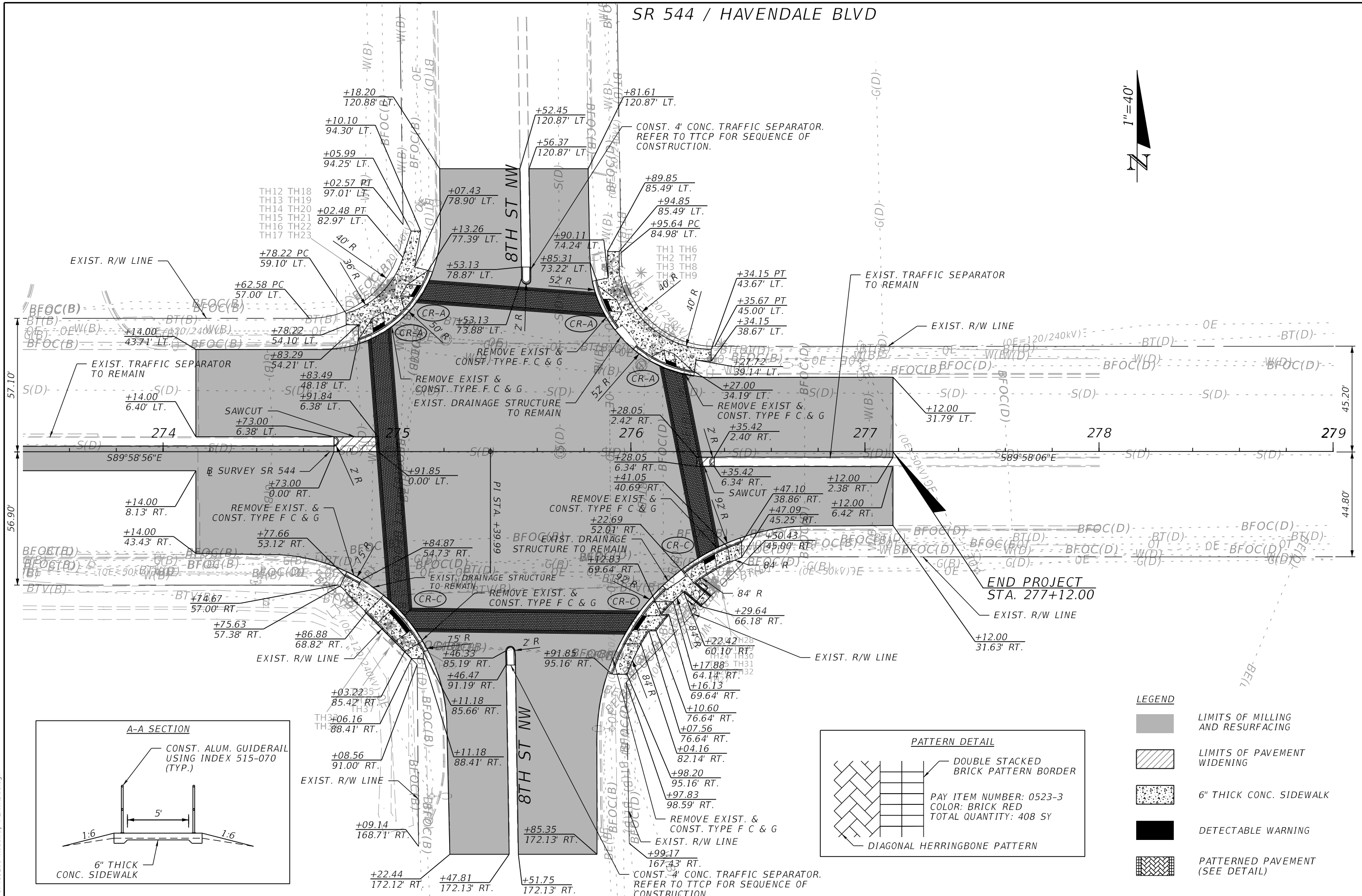
- LIMITS OF MILLING AND RESURFACING
- LIMITS OF PAVEMENT WIDENING

2/21/2023 2:41:16 PM BenjaminKelk S:\Projects\FDOT\44787415201\Roadway\PLANRD01.dgn

REVISIONS				ENGINEER OF RECORD		STATE OF FLORIDA DEPARTMENT OF TRANSPORTATION			<b>ROADWAY PLANS</b>	SHEET NO.  7
DATE	DESCRIPTION	DATE	DESCRIPTION	KRIS KARANXHA LICENSE NUMBER: 92368 FLORIDA TRANSPORTATION ENGINEERING, INC. 11458 NORTH 53RD STREET TAMPA, FLORIDA 33617		ROAD NO.	COUNTY	FINANCIAL PROJECT ID		
								SR 544		

THE OFFICIAL RECORD OF THIS SHEET IS THE ELECTRONIC FILE DIGITALLY SIGNED AND SEALED UNDER RULE 61G15-23.004, F.A.C.

SR 544 / HAVENDALE BLVD



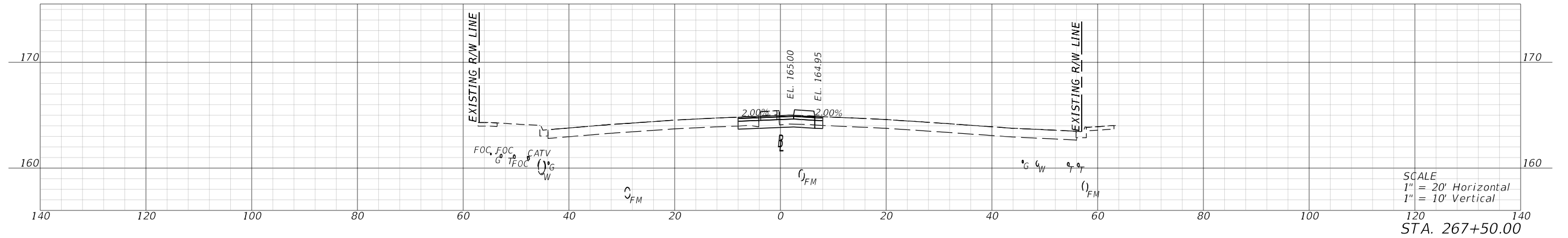
- LEGEND**
- LIMITS OF MILLING AND RESURFACING
  - LIMITS OF PAVEMENT WIDENING
  - 6" THICK CONC. SIDEWALK
  - DETECTABLE WARNING
  - PATTERNED PAVEMENT (SEE DETAIL)

2/21/2023 2:41:16 PM BenjaminKelk S:\Projects\FDOT\4478741-5201-Roadway\PLANRD01.dgn

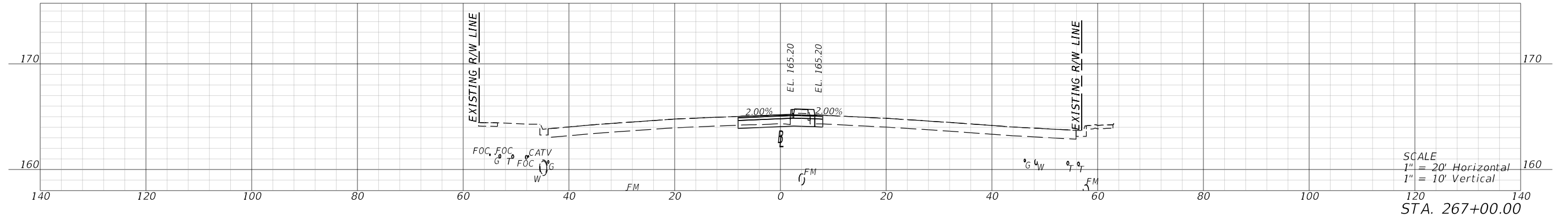
THE OFFICIAL RECORD OF THIS SHEET IS THE ELECTRONIC FILE DIGITALLY SIGNED AND SEALED UNDER RULE 61G15-23.004, F.A.C.

REVISIONS		REVISIONS		ENGINEER OF RECORD	STATE OF FLORIDA DEPARTMENT OF TRANSPORTATION			SHEET NO.
DATE	DESCRIPTION	DATE	DESCRIPTION		ROAD NO.	COUNTY	FINANCIAL PROJECT ID	
				KRIS KARANXHA LICENSE NUMBER: 92368 FLORIDA TRANSPORTATION ENGINEERING, INC. 11458 NORTH 53RD STREET TAMPA, FLORIDA 33617	SR 544	POLK	447874-1-52-01	<b>ROADWAY PLANS</b>  8

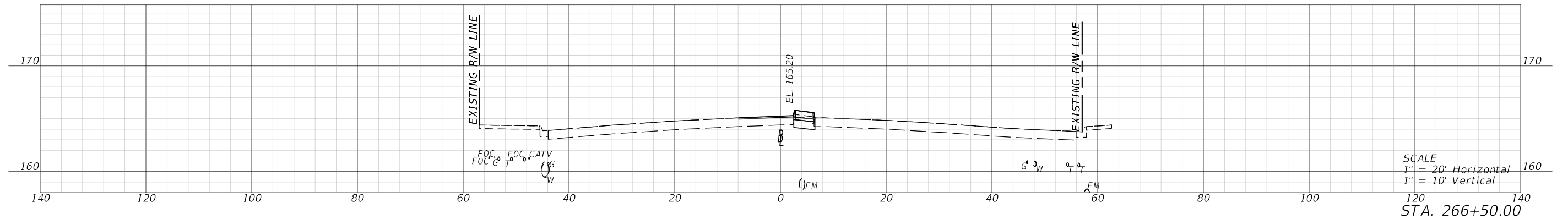




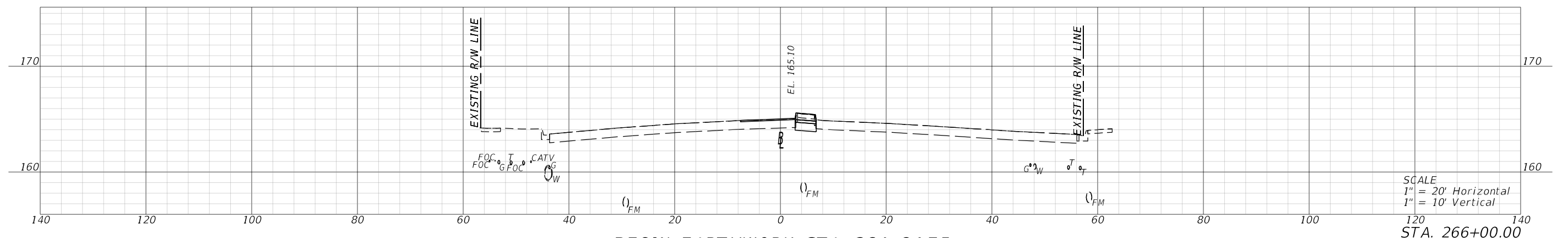
SCALE  
1" = 20' Horizontal  
1" = 10' Vertical  
120  
STA. 267+50.00



SCALE  
1" = 20' Horizontal  
1" = 10' Vertical  
120  
STA. 267+00.00



SCALE  
1" = 20' Horizontal  
1" = 10' Vertical  
120  
STA. 266+50.00



SCALE  
1" = 20' Horizontal  
1" = 10' Vertical  
120  
STA. 266+00.00

BEGIN EARTHWORK STA. 264+84.75  
BEGIN CONSTRUCTION STA. 264+84.75

2/21/2023 2:41:19 PM BenjaminKelk S:\Projects\FDOT\_447874-1-52-01\Roadway\RD\SRD01.dgn

REVISIONS			
DATE	DESCRIPTION	DATE	DESCRIPTION

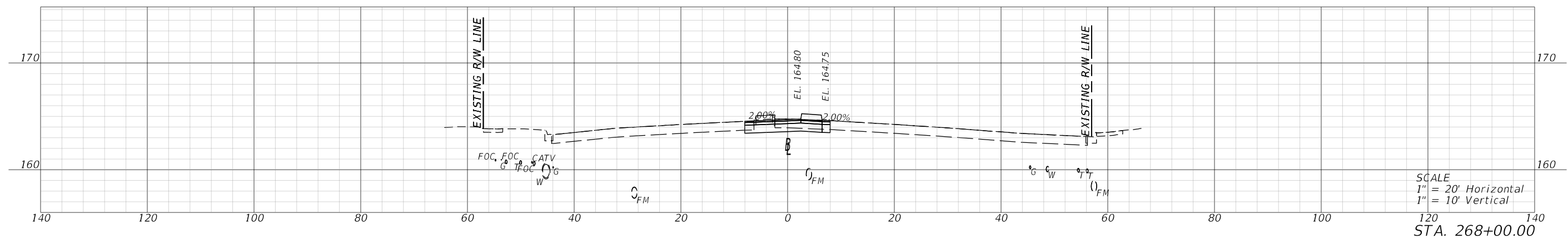
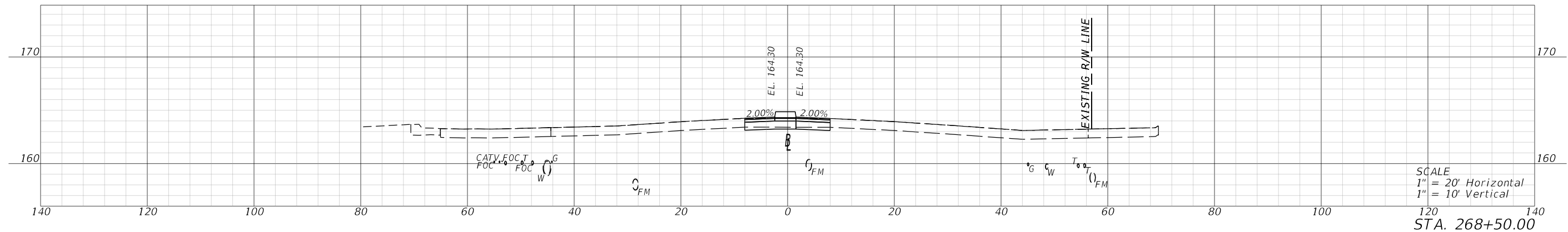
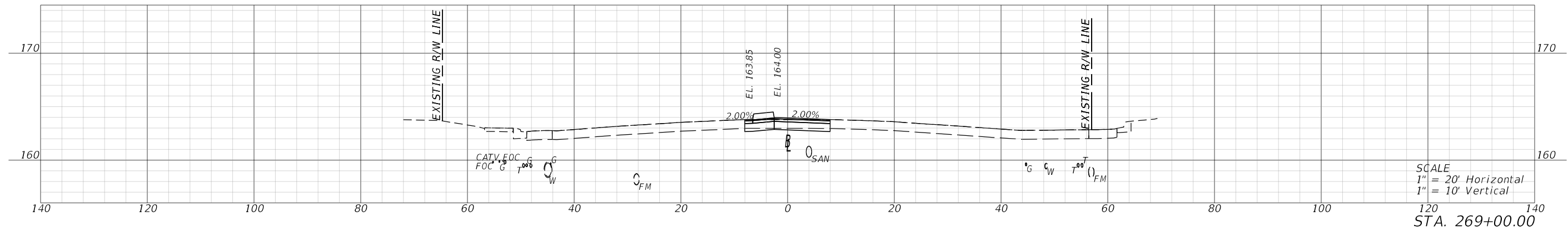
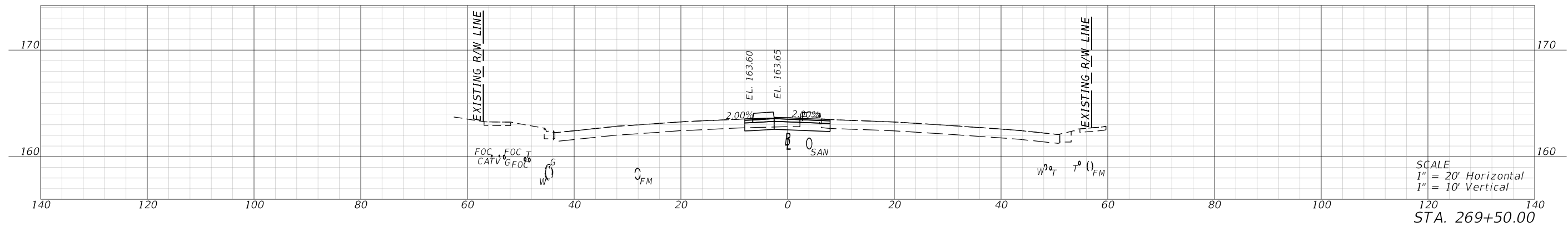
ENGINEER OF RECORD  
KRIS KARANXHA  
LICENSE NUMBER: 92368  
FLORIDA TRANSPORTATION ENGINEERING, INC.  
11458 NORTH 53RD STREET  
TAMPA, FLORIDA 33617

STATE OF FLORIDA DEPARTMENT OF TRANSPORTATION		
ROAD NO.	COUNTY	FINANCIAL PROJECT ID
SR 544	POLK	447874-1-52-01

**CROSS SECTIONS**

SHEET NO.  
9

THE OFFICIAL RECORD OF THIS SHEET IS THE ELECTRONIC FILE DIGITALLY SIGNED AND SEALED UNDER RULE 61G15-23.004, F.A.C.



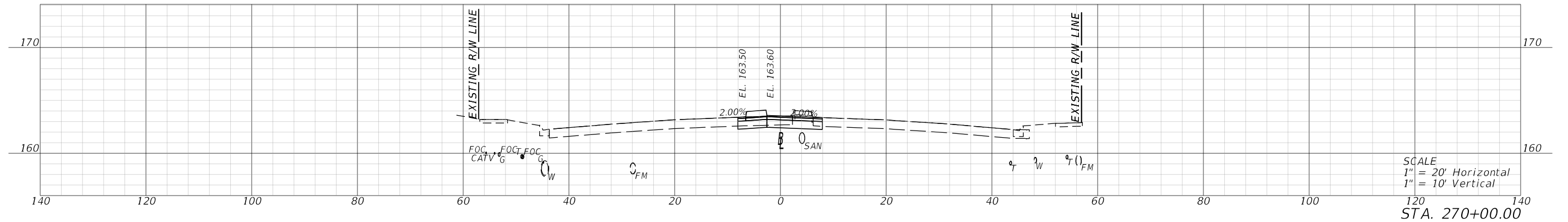
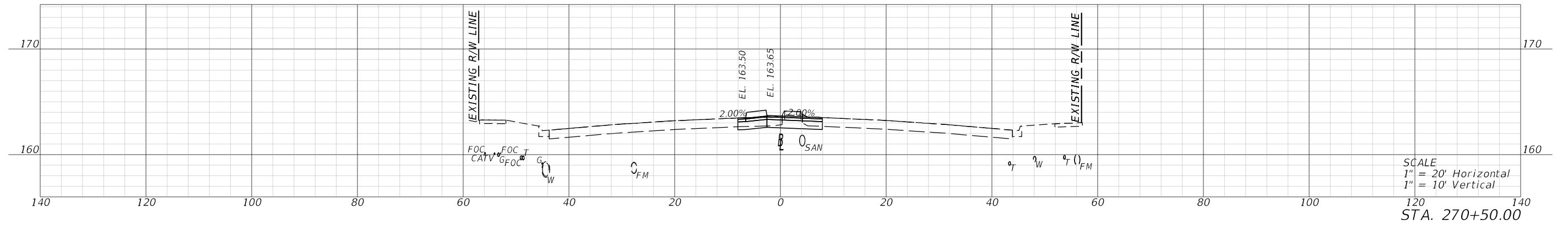
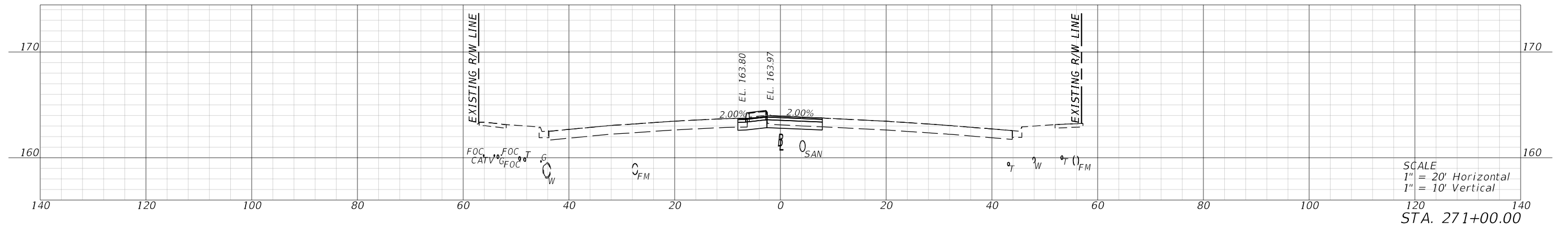
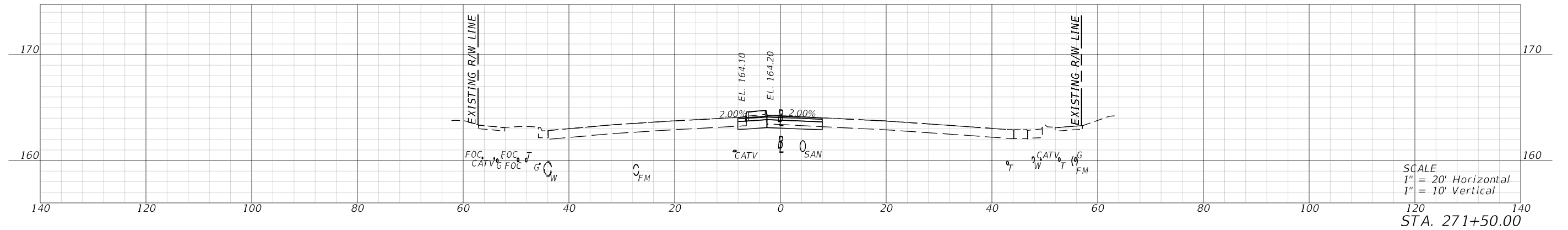
2/21/2023 2:41:20 PM BenjaminKelk S:\Projects\DOT\_447874-1-52-01\Roadway\RD\SRD01.dgn

REVISIONS				ENGINEER OF RECORD		STATE OF FLORIDA DEPARTMENT OF TRANSPORTATION			SHEET NO.
DATE	DESCRIPTION	DATE	DESCRIPTION	KRIS KARANXHA LICENSE NUMBER: 92368 FLORIDA TRANSPORTATION ENGINEERING, INC. 11458 NORTH 53RD STREET TAMPA, FLORIDA 33617		ROAD NO.	COUNTY	FINANCIAL PROJECT ID	
						SR 544	POLK	447874-1-52-01	10

**CROSS SECTIONS**

THE OFFICIAL RECORD OF THIS SHEET IS THE ELECTRONIC FILE DIGITALLY SIGNED AND SEALED UNDER RULE 61G15-23.004, F.A.C.

2/21/2023 2:41:22 PM BenjaminKelk  
S:\Projects\DOT\_447874-1-5201-Roadway\RD\SRD01.dgn

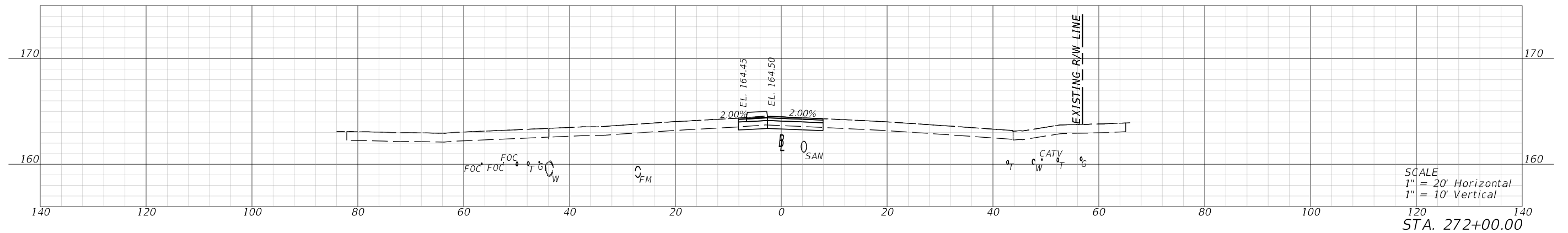


REVISIONS				ENGINEER OF RECORD	STATE OF FLORIDA DEPARTMENT OF TRANSPORTATION			SHEET NO.
DATE	DESCRIPTION	DATE	DESCRIPTION		ROAD NO.	COUNTY	FINANCIAL PROJECT ID	
				KRIS KARANXHA LICENSE NUMBER: 92368 FLORIDA TRANSPORTATION ENGINEERING, INC. 11458 NORTH 53RD STREET TAMPA, FLORIDA 33617	SR 544	POLK	447874-1-52-01	11
<b>CROSS SECTIONS</b>								

THE OFFICIAL RECORD OF THIS SHEET IS THE ELECTRONIC FILE DIGITALLY SIGNED AND SEALED UNDER RULE 61G15-23.004, F.A.C.

2/21/2023 2:41:22 PM BenjaminKelk  
 S:\Projects\DOT\_44787415201\Roadway\RD\SRD01.dgn

END EARTHWORK STA. 276+47.10  
 END CONSTRUCTION STA. 277+12.00



SCALE  
 1" = 20' Horizontal  
 1" = 10' Vertical

STA. 272+00.00

REVISIONS				ENGINEER OF RECORD	STATE OF FLORIDA DEPARTMENT OF TRANSPORTATION			CROSS SECTIONS	SHEET NO. 12
DATE	DESCRIPTION	DATE	DESCRIPTION		ROAD NO.	COUNTY	FINANCIAL PROJECT ID		
				KRIS KARANXHA LICENSE NUMBER: 92368 FLORIDA TRANSPORTATION ENGINEERING, INC. 11458 NORTH 53RD STREET TAMPA, FLORIDA 33617	SR 544	POLK	447874-1-52-01		

THE OFFICIAL RECORD OF THIS SHEET IS THE ELECTRONIC FILE DIGITALLY SIGNED AND SEALED UNDER RULE 61G15-23.004, F.A.C.

TTCP NOTES

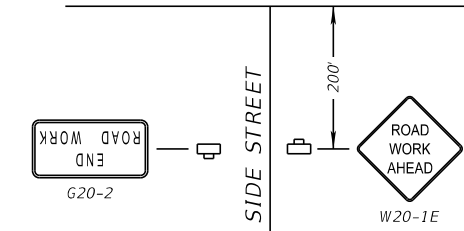
1. SINGLE LANE CLOSURES ARE NOT PERMITTED FROM 6 AM TO 8 PM. DOUBLE LANE CLOSURES ARE NOT PERMITTED FROM 5:30 AM TO 8:30 PM.
2. NOTIFY ALL LOCAL LAW ENFORCEMENT AND EMERGENCY/RESCUE AGENCIES LOCATED IN THE PROJECT VICINITY 24 HOURS IN ADVANCE OF PERFORMING ANY LANE CLOSURES.
3. THE EXISTING POSTED SPEED LIMIT OF 45 MPH IS TO REMAIN.
4. NOTIFY CITRUS CONNECTION (LAMTD) FOURTEEN (14) BUSINESS DAYS PRIOR TO PERFORMING ANY WORK IN THE VICINITY OF AN EXISTING TRANSIT STOP OR ROUTE (PHILIP DITTA, 863-213-5331). MAINTAIN ADA-COMPLIANT ACCESS TO ALL EXISTING TRANSIT STOPS DURING CONSTRUCTION. COORDINATE TRANSIT STOP ADJUSTMENTS OR ALTERNATE LOCATIONS WITH LAMTD PRIOR TO PERFORMING WORK.

PHASING NOTES

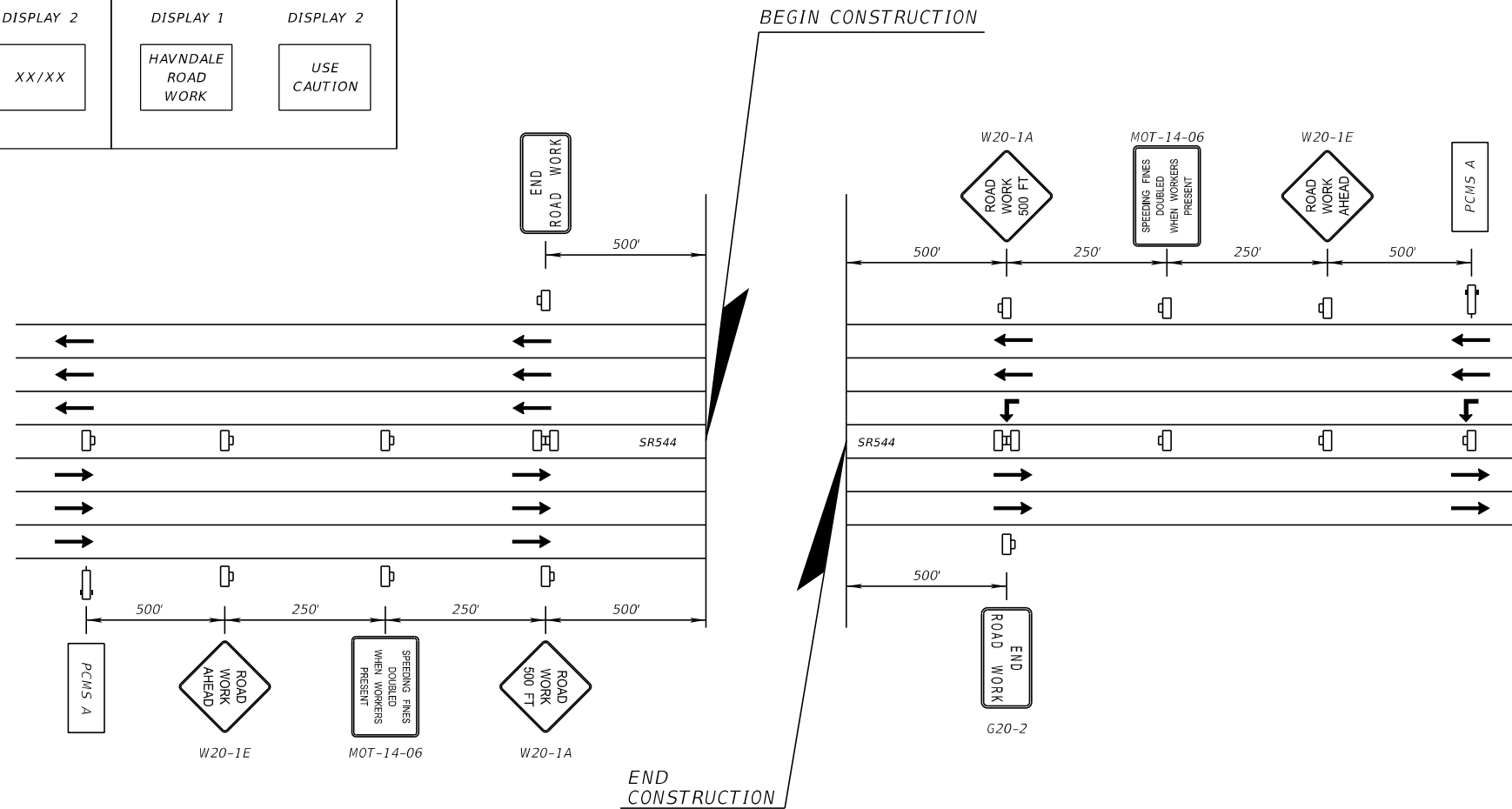
1. INSTALL ADVANCE WARNING SIGNS.
2. CONSTRUCT WIDENING (EXCLUDING FRICTION COURSE) AND TRAFFIC SEPARATOR IMPROVEMENTS (EXCLUDING 8TH ST NW) UTILIZING INDEX 102-613 AND 102-615.
3. CONSTRUCT CURB RAMP AND MAST ARMS. UTILIZE THE PEDESTRIAN TRAFFIC CONTROL PLAN ON SHEETS 9-12 FOR THE SEQUENCE OF CONSTRUCTION AND PHASING. LIMIT CONSTRUCTION TO ONE STREET CORNER AT A TIME.
4. MILL EASTBOUND AND WESTBOUND LEFT TURN LANES AS WELL AS THE INTERSECTION OF SR 544 AND 8TH ST.
5. RESURFACE PLACING FRICTION COURSE AND PLACE FINAL SIGNING AND PAVEMENT MARKINGS UTILIZING INDEX 102-613 AND 102-615.

PORTABLE CHANGEABLE MESSAGE SIGNS (PCMS)

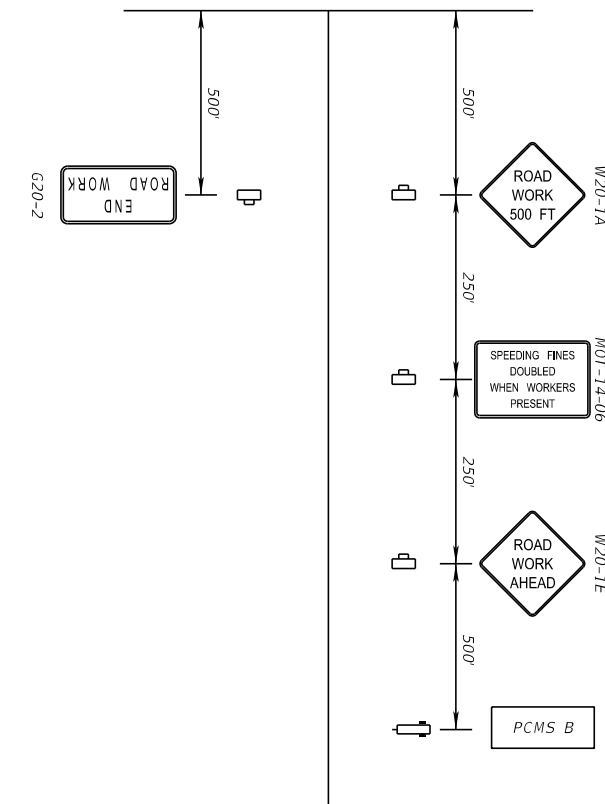
14 DAYS PRIOR TO BEGIN CONSTRUCTION PCMS A		DURING LANE CLOSURE PCMS A	
DISPLAY 1	DISPLAY 2	DISPLAY 1	DISPLAY 2
ROAD WORK	XX/XX	LEFT LANE CLOSED	MERGE RIGHT
14 DAYS PRIOR TO BEGIN CONSTRUCTION PCMS B		DURING LANE CLOSURE PCMS B	
DISPLAY 1	DISPLAY 2	DISPLAY 1	DISPLAY 2
HAVNDALE ROAD WORK	XX/XX	HAVNDALE ROAD WORK	USE CAUTION



UNSIGNALED SIDE STREET  
NTS



ADVANCE WARNING SIGN DIAGRAM AT BEGIN/END PROJECT  
NTS



8TH ST. NW  
NTS

2/21/2023 2:41:23 PM BenjaminKelk S:\Projects\FDOT\_447874-1-5201-Roadway\TCLRD01.dgn

REVISIONS		ENGINEER OF RECORD	
DATE	DESCRIPTION	DATE	DESCRIPTION

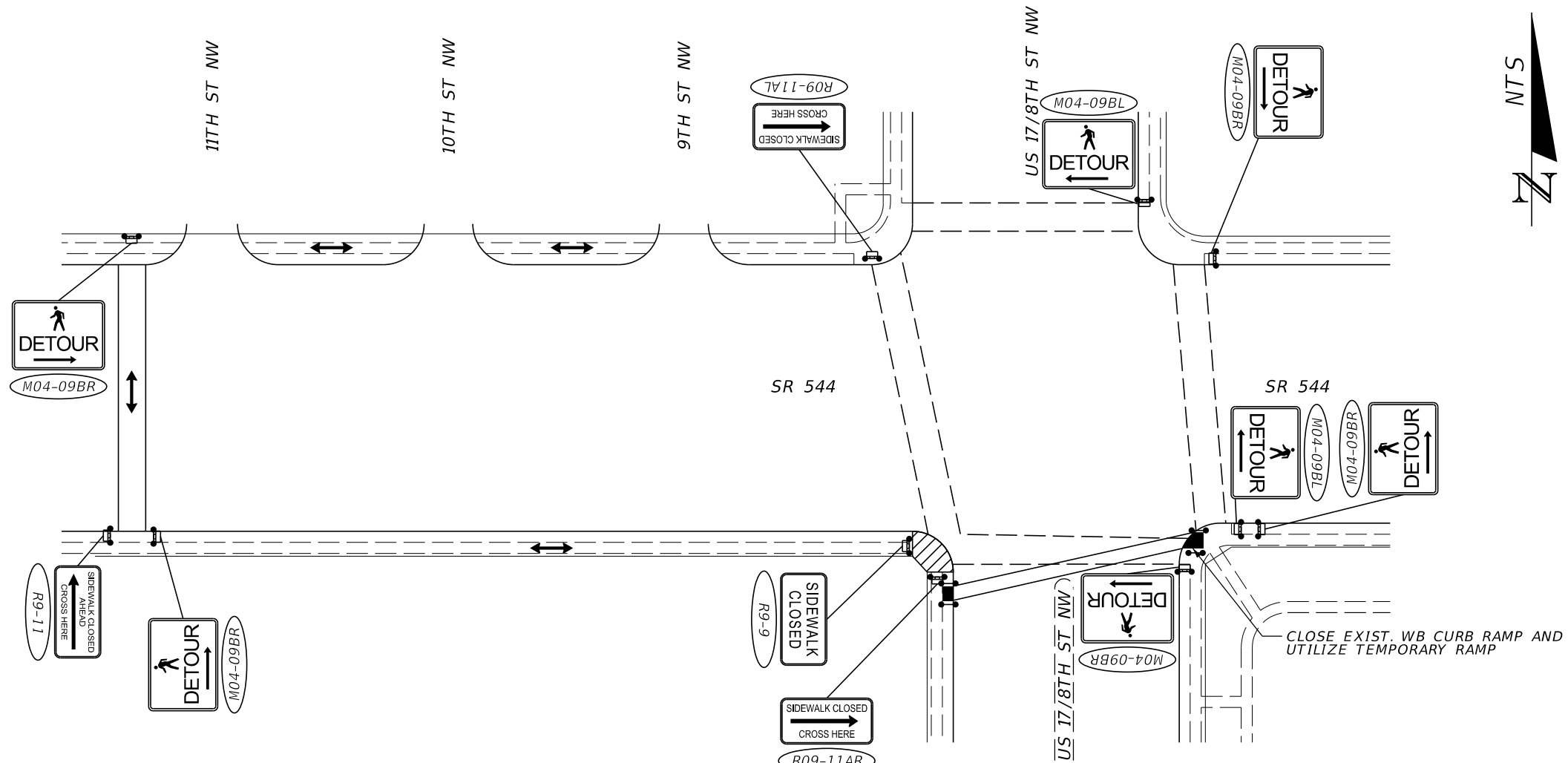
KRIS KARANXHA  
LICENSE NUMBER: 92368  
FLORIDA TRANSPORTATION ENGINEERING, INC.  
11458 NORTH 53RD STREET  
TAMPA, FLORIDA 33617

STATE OF FLORIDA DEPARTMENT OF TRANSPORTATION		
ROAD NO.	COUNTY	FINANCIAL PROJECT ID
SR 544	POLK	447874-1-52-01

**TEMPORARY TRAFFIC  
CONTROL PLAN**

SHEET  
NO.  
13

THE OFFICIAL RECORD OF THIS SHEET IS THE ELECTRONIC FILE DIGITALLY SIGNED AND SEALED UNDER RULE 61G15-23.004, F.A.C.



4A. SOUTHWEST CORNER CLOSURE AND DETOUR

LEGEND



WORK ZONE



PEDESTRIAN LONGITUDINAL CHANNELIZING DEVICE W/ WORK ZONE SIGN



TEMPORARY CURB RAMP



PEDESTRIAN LONGITUDINAL CHANNELIZING DEVICE

2/21/2023 2:41:23 PM BenjaminKelk S:\Projects\FDOT\447874-1-5201-Roadway\TCPLRD01.dgn

REVISIONS		REVISIONS	
DATE	DESCRIPTION	DATE	DESCRIPTION

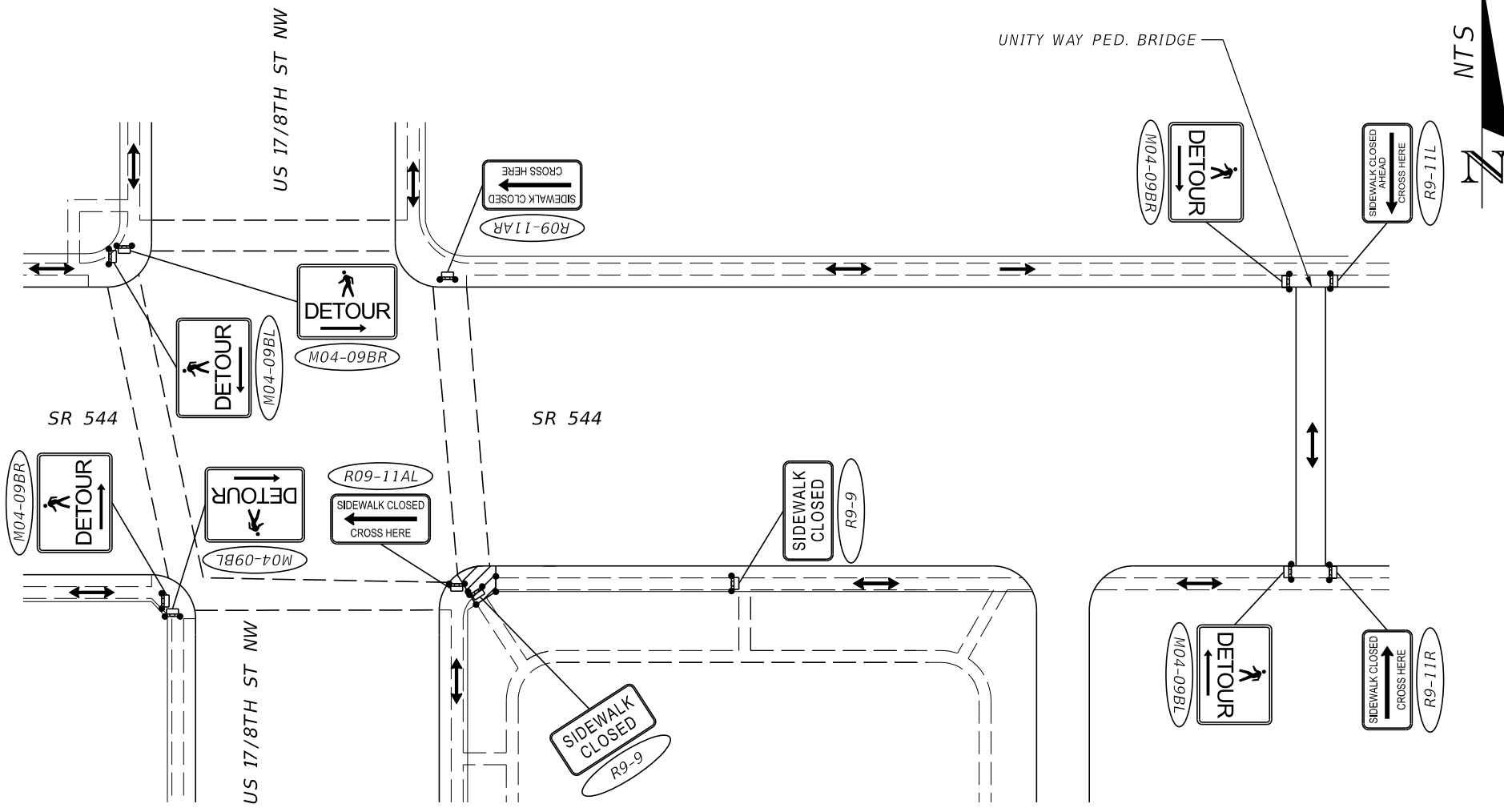
ENGINEER OF RECORD  
 KRIS KARANXHA  
 LICENSE NUMBER: 92368  
 FLORIDA TRANSPORTATION ENGINEERING, INC.  
 11458 NORTH 53RD STREET  
 TAMPA, FLORIDA 33617

STATE OF FLORIDA DEPARTMENT OF TRANSPORTATION		
ROAD NO.	COUNTY	FINANCIAL PROJECT ID
SR 544	POLK	447874-1-52-01

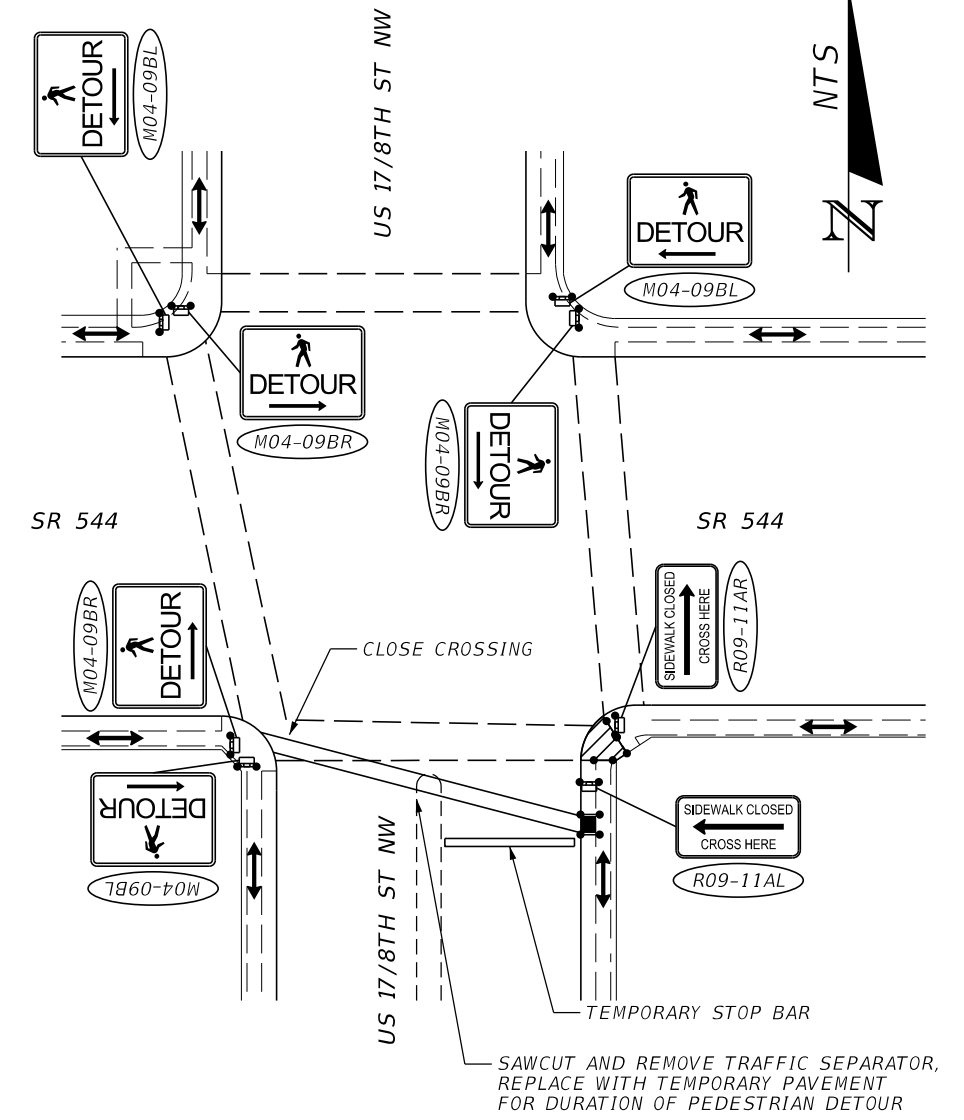
**PEDESTRIAN TRAFFIC  
CONTROL PLAN**

SHEET NO.  
14





THE OFFICIAL RECORD OF THIS SHEET IS THE ELECTRONIC FILE DIGITALLY SIGNED AND SEALED UNDER RULE 61G15-23.004, F.A.C.



4B. SOUTHEAST CORNER CLOSURE AND DETOUR (NORTH-SOUTH CROSSING)



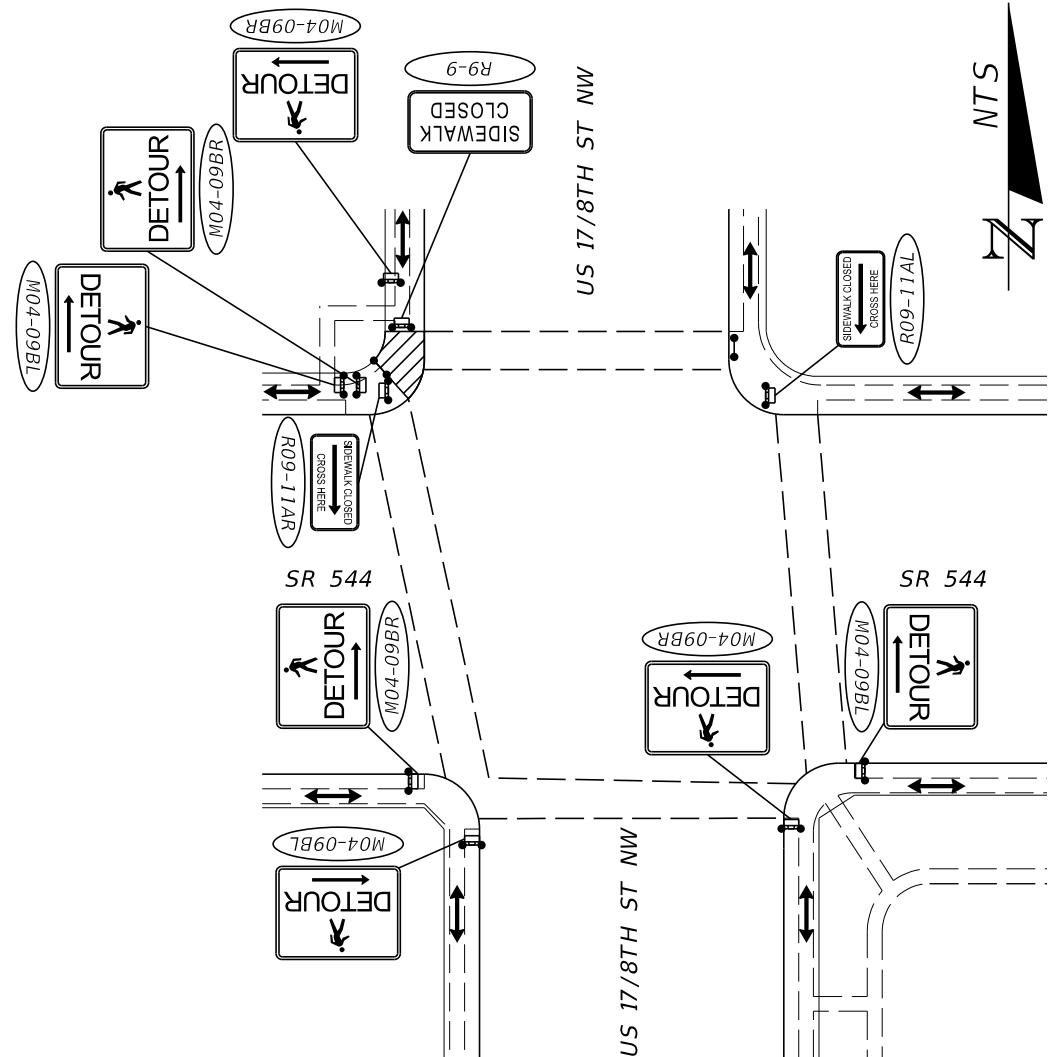
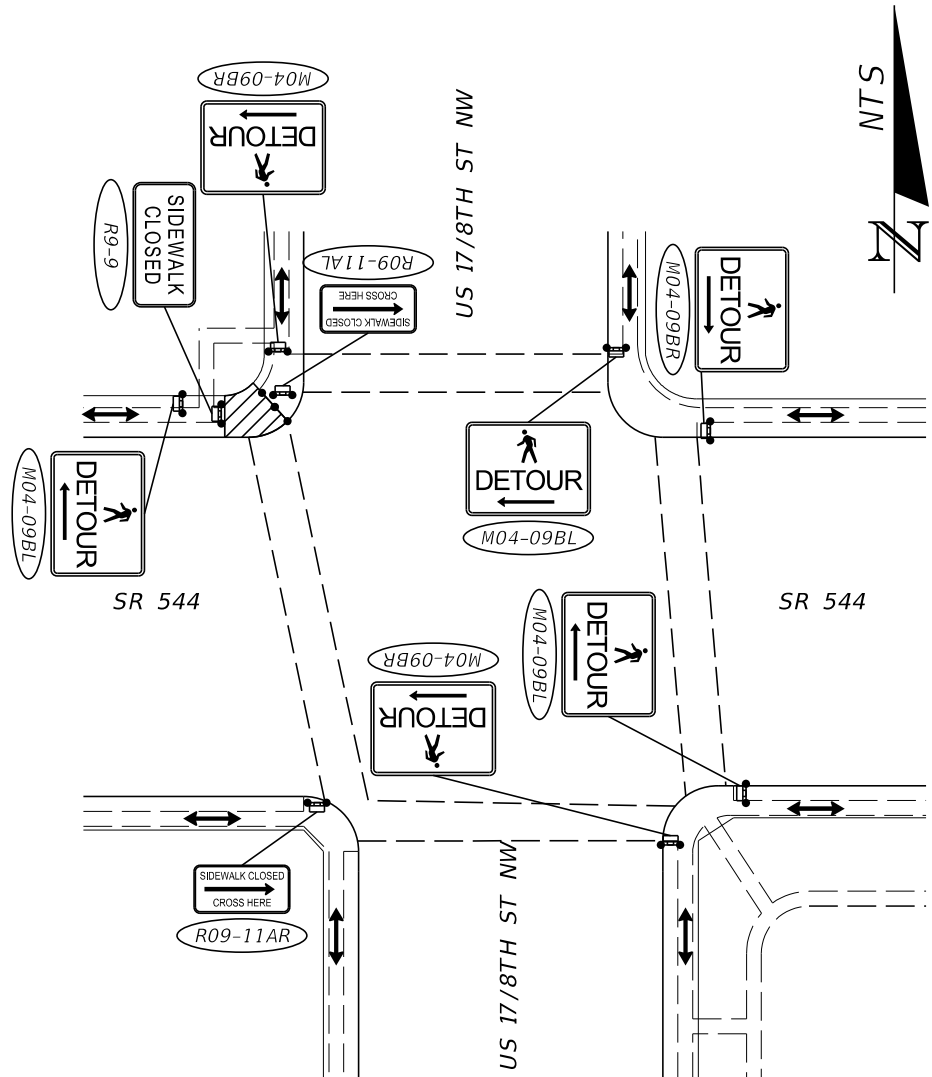
4C. SOUTHEAST CORNER CLOSURE AND DETOUR (EAST-WEST CROSSING)

- LEGEND**
-  WORK ZONE
  -  PEDESTRIAN LONGITUDINAL CHANNELIZING DEVICE W/ WORK ZONE SIGN
  -  TEMPORARY CURB RAMP
  -  PEDESTRIAN LONGITUDINAL CHANNELIZING DEVICE

2/21/2023 2:41:23 PM BenjaminKelk S:\Projects\FDOT\_44787415201\Roadway\TCPLRD01.dgn

REVISIONS				ENGINEER OF RECORD		STATE OF FLORIDA DEPARTMENT OF TRANSPORTATION			<b>PEDESTRIAN TRAFFIC CONTROL PLAN</b>	SHEET NO.  15
DATE	DESCRIPTION	DATE	DESCRIPTION			ROAD NO.	COUNTY	FINANCIAL PROJECT ID		
				KRIS KARANXHA LICENSE NUMBER: 92368 FLORIDA TRANSPORTATION ENGINEERING, INC. 11458 NORTH 53RD STREET TAMPA, FLORIDA 33617		SR 544	POLK	447874-1-52-01		

THE OFFICIAL RECORD OF THIS SHEET IS THE ELECTRONIC FILE DIGITALLY SIGNED AND SEALED UNDER RULE 61G15-23.004, F.A.C.



4D. NORTHWEST CORNER CLOSURE AND DETOUR (NORTH-SOUTH CROSSING)

4E. NORTHWEST CORNER CLOSURE AND DETOUR (EAST-WEST CROSSING)

LEGEND



WORK ZONE



PEDESTRIAN LONGITUDINAL CHANNELIZING DEVICE W/ WORK ZONE SIGN



PEDESTRIAN LONGITUDINAL CHANNELIZING DEVICE

2/21/2023 2:41:23 PM BenjaminKelk S:\Projects\FDOT\447874-1-5201-Roadway\TCLP\RD01.dgn

REVISIONS		REVISIONS	
DATE	DESCRIPTION	DATE	DESCRIPTION

ENGINEER OF RECORD  
 KRIS KARANXHA  
 LICENSE NUMBER: 92368  
 FLORIDA TRANSPORTATION ENGINEERING, INC.  
 11458 NORTH 53RD STREET  
 TAMPA, FLORIDA 33617

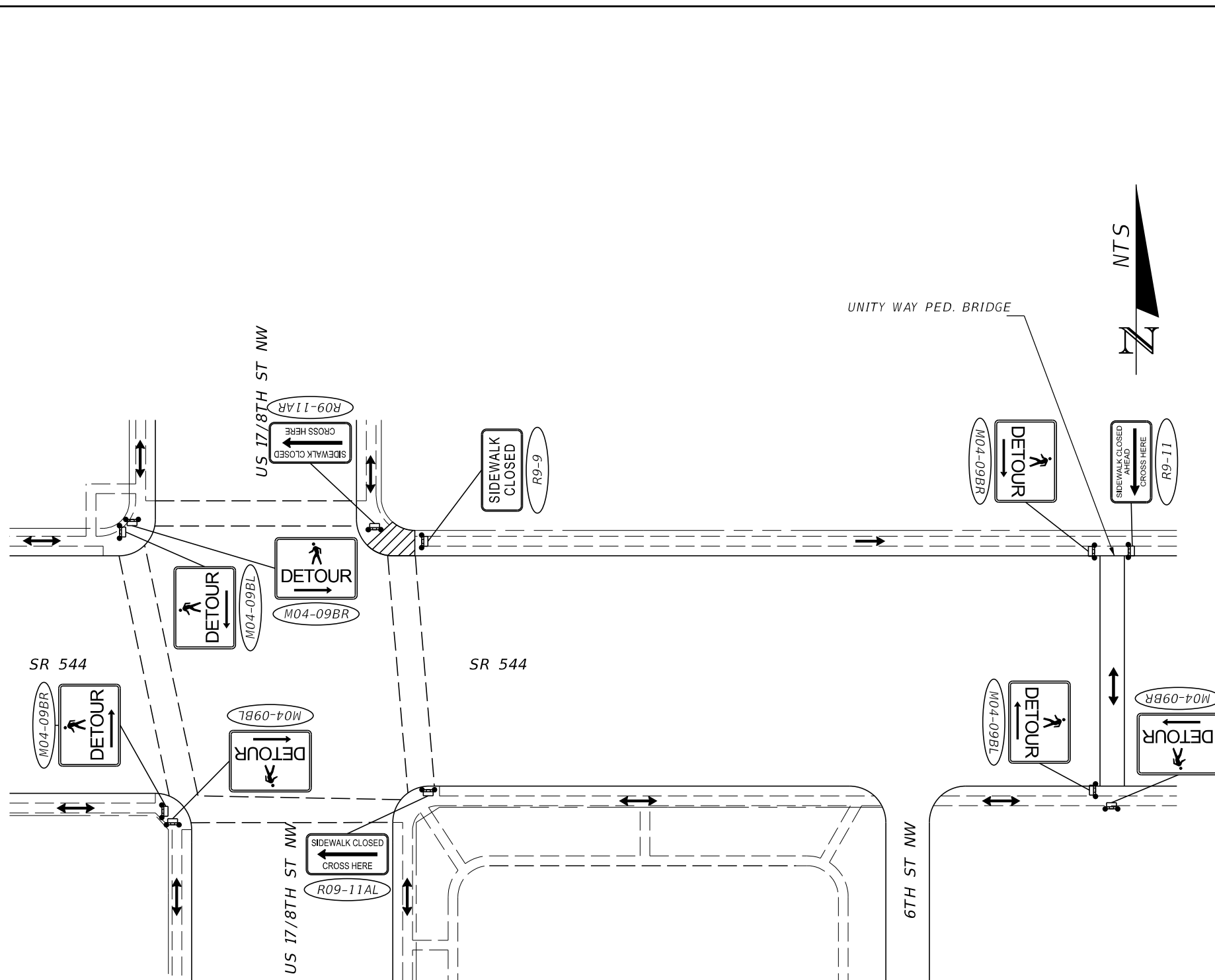
STATE OF FLORIDA DEPARTMENT OF TRANSPORTATION		
ROAD NO.	COUNTY	FINANCIAL PROJECT ID
SR 544	POLK	447874-1-52-01

**PEDESTRIAN TRAFFIC  
CONTROL PLAN**

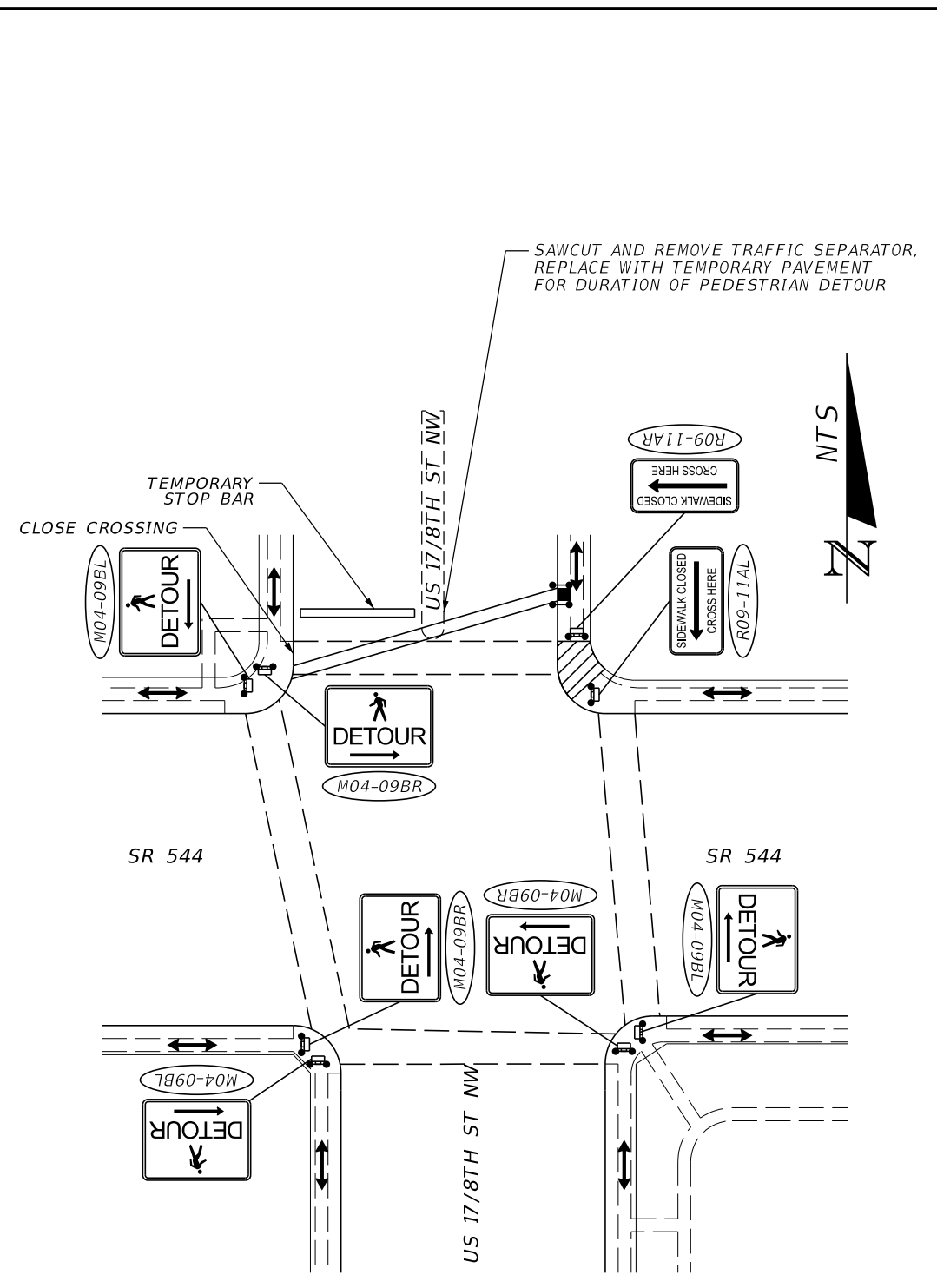
SHEET NO.  
16

THE OFFICIAL RECORD OF THIS SHEET IS THE ELECTRONIC FILE DIGITALLY SIGNED AND SEALED UNDER RULE 61G15-23.004, F.A.C.








4F. NORTHEAST CORNER CLOSURE AND DETOUR (NORTH-SOUTH CROSSING)



4G. NORTHEAST CORNER CLOSURE AND DETOUR (EAST-WEST CROSSING)

LEGEND

-  WORK ZONE
-  PEDESTRIAN LONGITUDINAL CHANNELIZING DEVICE W/ WORK ZONE SIGN
-  PEDESTRIAN LONGITUDINAL CHANNELIZING DEVICE

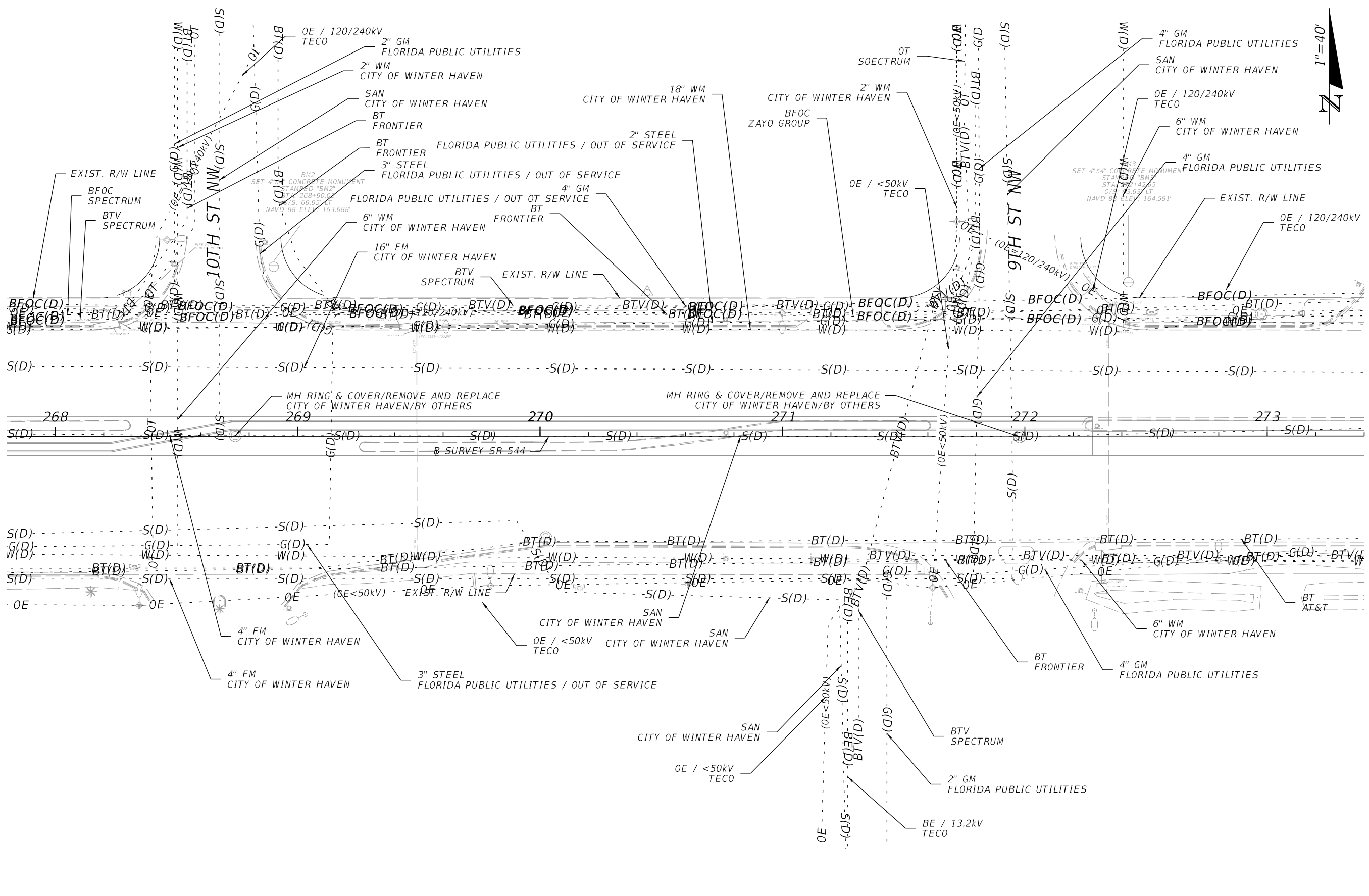
REVISIONS				ENGINEER OF RECORD	STATE OF FLORIDA DEPARTMENT OF TRANSPORTATION			SHEET NO.
DATE	DESCRIPTION	DATE	DESCRIPTION		ROAD NO.	COUNTY	FINANCIAL PROJECT ID	
				KRIS KARANXHA LICENSE NUMBER: 92368 FLORIDA TRANSPORTATION ENGINEERING, INC. 11458 NORTH 53RD STREET TAMPA, FLORIDA 33617	SR 544	POLK	447874-1-52-01	17

2/21/2023 2:41:23 PM BenjaminKelk S:\Projects\FDOT\447874-1-52-01-Roadway\TCLRD01.dgn

THE OFFICIAL RECORD OF THIS SHEET IS THE ELECTRONIC FILE DIGITALLY SIGNED AND SEALED UNDER RULE 61G15-23.004, F.A.C.



2/21/2023 2:41:26 PM BenjaminKelk  
 S:\Projects\DOT\_44787415201\Roadway\UT ARDR001.dgn

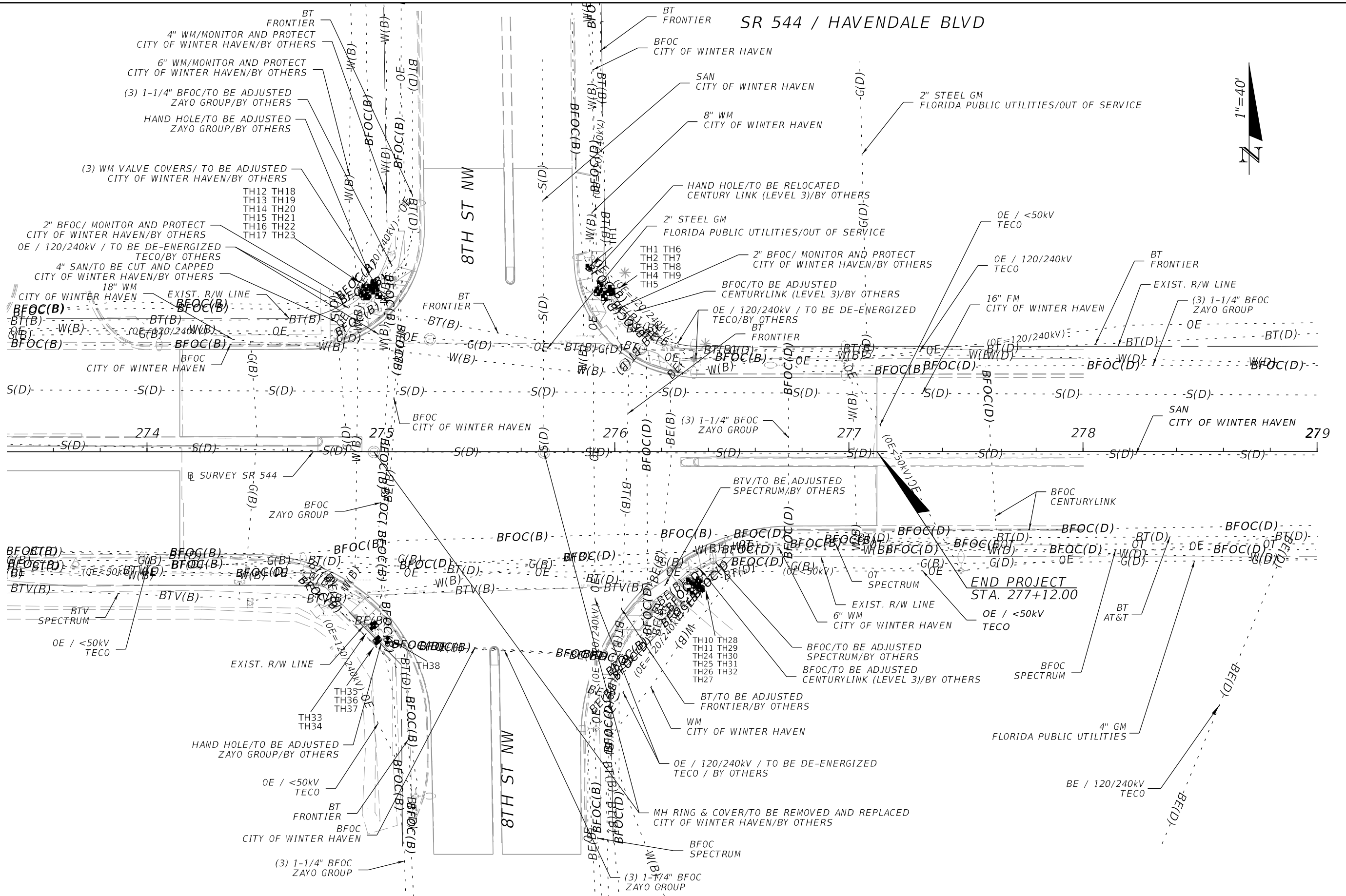
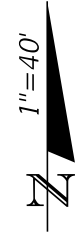


REVISIONS				ENGINEER OF RECORD		STATE OF FLORIDA DEPARTMENT OF TRANSPORTATION			SHEET NO.
DATE	DESCRIPTION	DATE	DESCRIPTION			ROAD NO.	COUNTY	FINANCIAL PROJECT ID	
				KRIS KARANXHA LICENSE NUMBER: 92368 FLORIDA TRANSPORTATION ENGINEERING, INC. 11458 NORTH 53RD STREET TAMPA, FLORIDA 33617		SR 544	POLK	447874-1-52-01	19

**UTILITY ADJUSTMENTS**

THE OFFICIAL RECORD OF THIS SHEET IS THE ELECTRONIC FILE DIGITALLY SIGNED AND SEALED UNDER RULE 61G15-23.004, F.A.C.

SR 544 / HAVENDALE BLVD

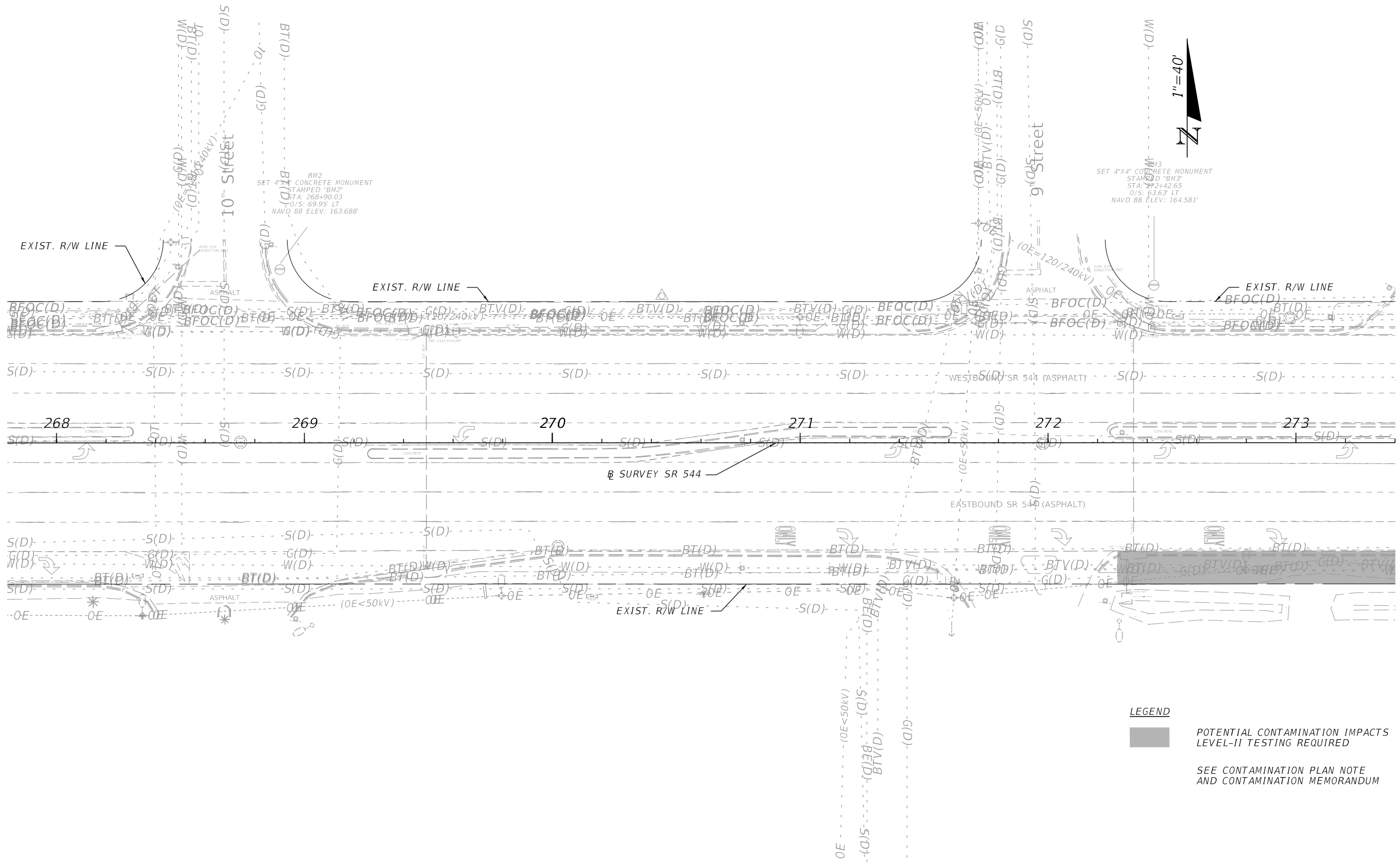


2/21/2023 2:41:26 PM BenjaminKelk S:\Projects\DOT\_44787415201\Roadway\UT ARDR001.dgn

REVISIONS		REVISIONS		ENGINEER OF RECORD	STATE OF FLORIDA DEPARTMENT OF TRANSPORTATION			SHEET NO.
DATE	DESCRIPTION	DATE	DESCRIPTION		ROAD NO.	COUNTY	FINANCIAL PROJECT ID	
				KRIS KARANXHA LICENSE NUMBER: 92368 FLORIDA TRANSPORTATION ENGINEERING, INC. 11458 NORTH 53RD STREET TAMPA, FLORIDA 33617	SR 544	POLK	447874-1-52-01	20
<b>UTILITY ADJUSTMENTS</b>								

THE OFFICIAL RECORD OF THIS SHEET IS THE ELECTRONIC FILE DIGITALLY SIGNED AND SEALED UNDER RULE 61G15-23.004, F.A.C.

2/21/2023 2:41:27 PM BenjaminKelk  
 S:\Projects\FDOT\44787415201\EnvironmentalManagement\PLANE101.dgn



SET 4"x4" CONCRETE MONUMENT  
 STAMPED "BM3"  
 STA: 72+42.65  
 O/S: 63.63' LT  
 NAVD 88 ELEV: 164.581'

BM2  
 SET 4"x4" CONCRETE MONUMENT  
 STAMPED "BM2"  
 STA: 268+90.03  
 O/S: 69.95' LT  
 NAVD 88 ELEV: 163.688'

**LEGEND**

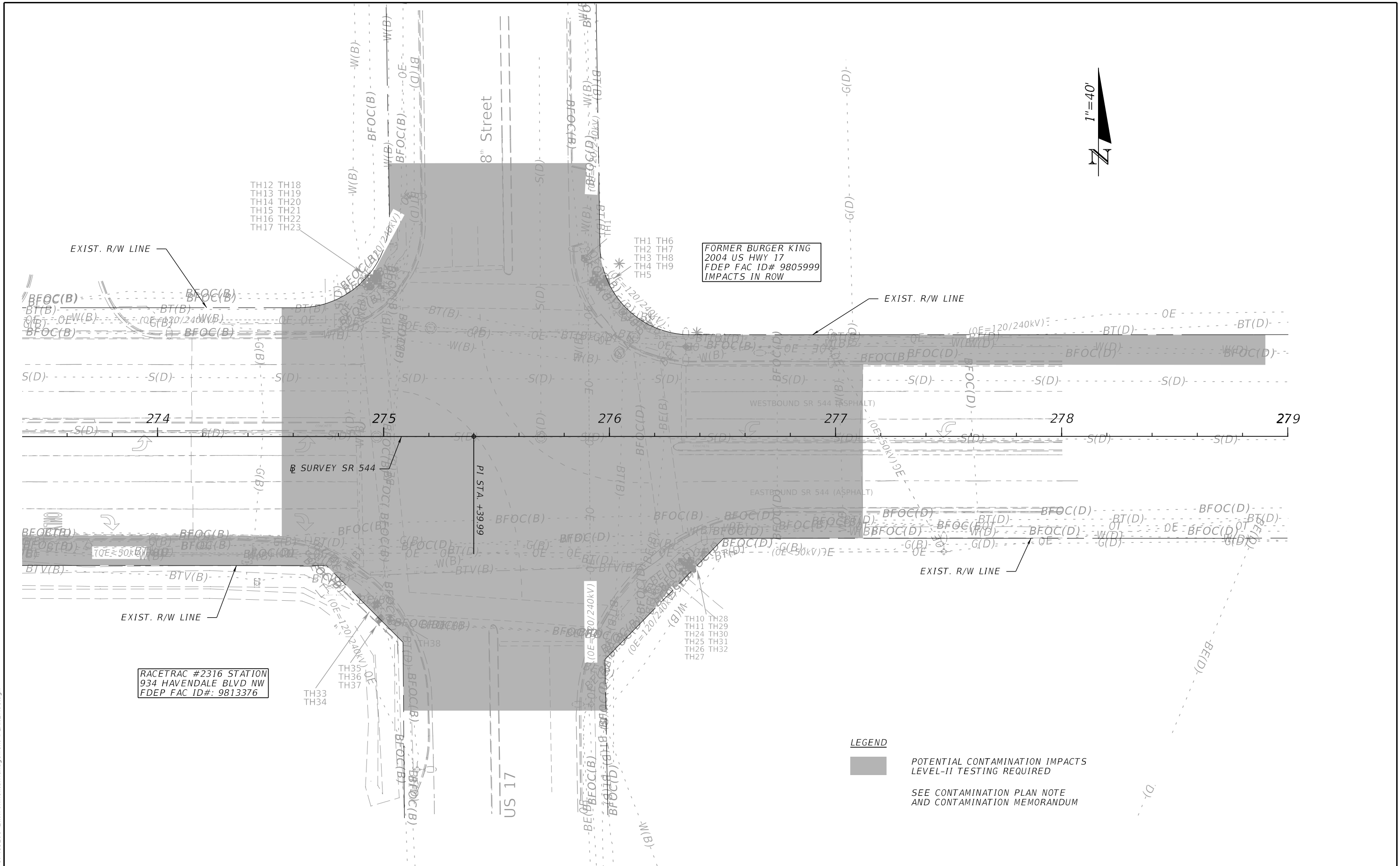
POTENTIAL CONTAMINATION IMPACTS  
 LEVEL-II TESTING REQUIRED

SEE CONTAMINATION PLAN NOTE  
 AND CONTAMINATION MEMORANDUM

REVISIONS				ENGINEER OF RECORD		STATE OF FLORIDA DEPARTMENT OF TRANSPORTATION			SHEET NO.
DATE	DESCRIPTION	DATE	DESCRIPTION			ROAD NO.	COUNTY	FINANCIAL PROJECT ID	
				KRIS KARANXHA LICENSE NUMBER: 92368 FLORIDA TRANSPORTATION ENGINEERING, INC. 11458 NORTH 53RD STREET TAMPA, FLORIDA 33617		SR 544	POLK	447874-1-52-01	
<b>POTENTIAL CONTAMINATION</b>									21

THE OFFICIAL RECORD OF THIS SHEET IS THE ELECTRONIC FILE DIGITALLY SIGNED AND SEALED UNDER RULE 61G15-23.004, F.A.C.

2/21/2023 2:41:27 PM BenjaminKelk S:\Projects\DOT\44787415201\EnvironmentalManagement\PLANE01.dgn



FORMER BURGER KING  
2004 US HWY 17  
FDEP FAC ID# 9805999  
IMPACTS IN ROW

RACETRAC #2316 STATION  
934 HAVENDALE BLVD NW  
FDEP FAC ID#: 9813376

**LEGEND**

POTENTIAL CONTAMINATION IMPACTS  
LEVEL-II TESTING REQUIRED

SEE CONTAMINATION PLAN NOTE  
AND CONTAMINATION MEMORANDUM

REVISIONS				ENGINEER OF RECORD		STATE OF FLORIDA DEPARTMENT OF TRANSPORTATION			SHEET NO.
DATE	DESCRIPTION	DATE	DESCRIPTION			ROAD NO.	COUNTY	FINANCIAL PROJECT ID	
				KRIS KARANXHA LICENSE NUMBER: 92368 FLORIDA TRANSPORTATION ENGINEERING, INC. 11458 NORTH 53RD STREET TAMPA, FLORIDA 33617		SR 544	POLK	447874-1-52-01	22

**POTENTIAL CONTAMINATION**

THE OFFICIAL RECORD OF THIS SHEET IS THE ELECTRONIC FILE DIGITALLY SIGNED AND SEALED UNDER RULE 61G15-23.004, F.A.C.