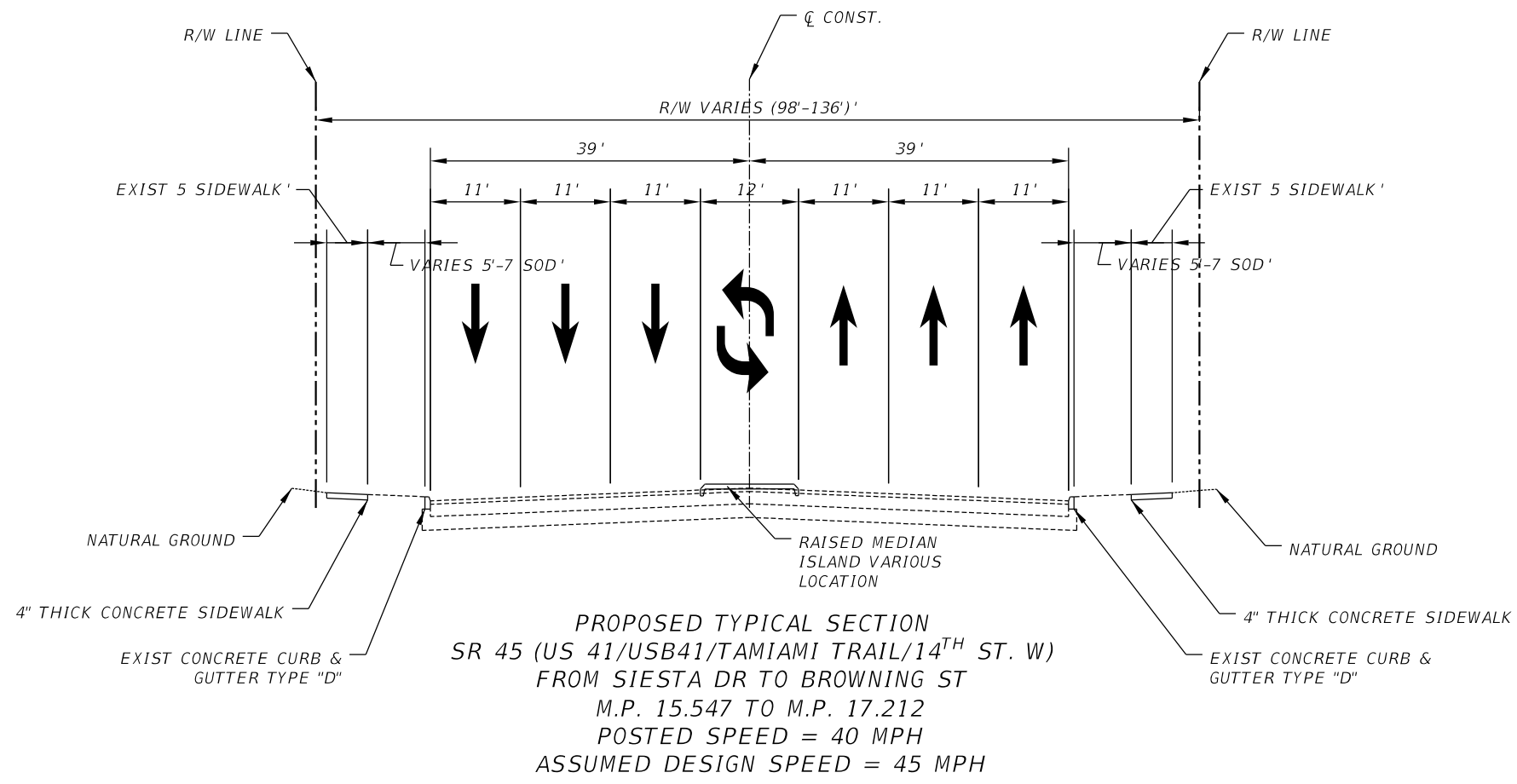
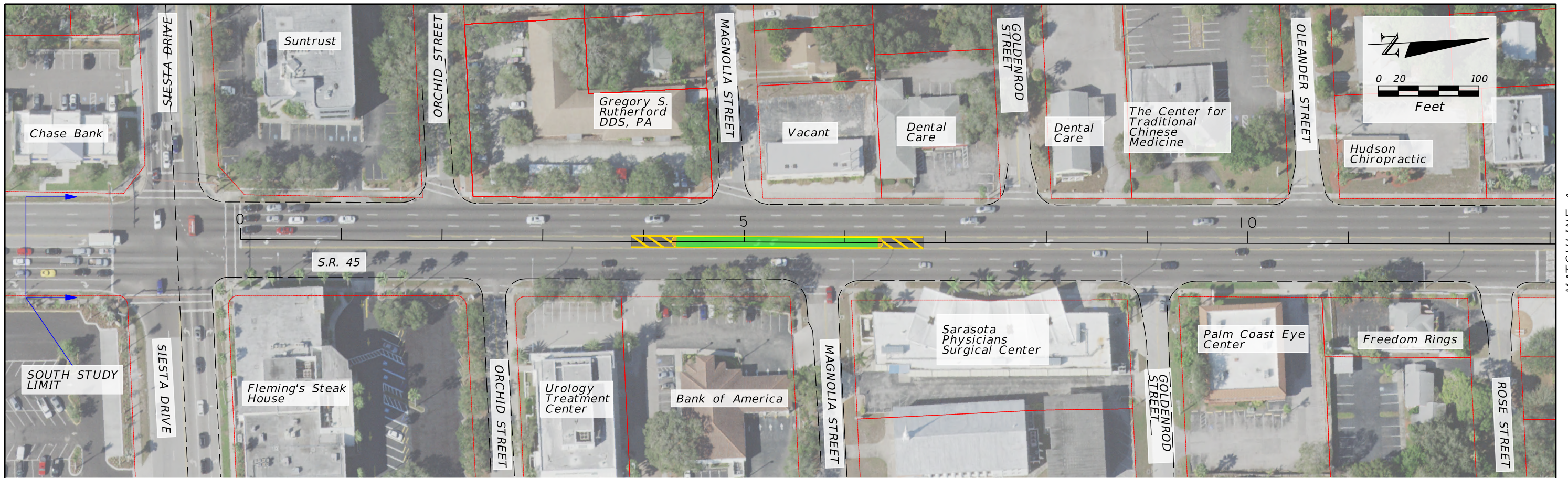


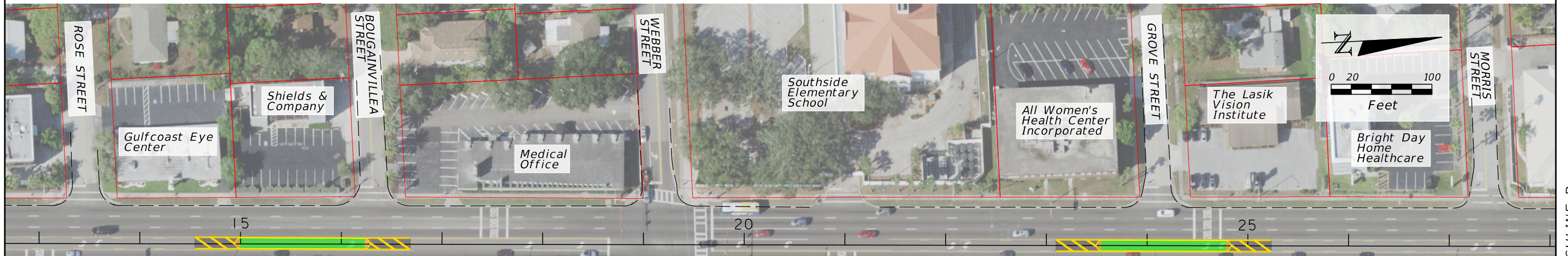
ACCESS CLASS: 7  
CONTEXT CLASS: C4



ACCESS CLASS: 7  
CONTEXT CLASS: C4



MATCHLINE A



MATCHLINE A

MATCHLINE B



PROPERTY LABELS BASED ON STREETVIEW IMAGERY AVAILABLE FROM MAY 2018

Traffic Engineering Data Solutions, Inc.  
80 Spring Vista Drive DeBary, FL 32713 Phone: 386.753.0558 Fax: 386.753.0778

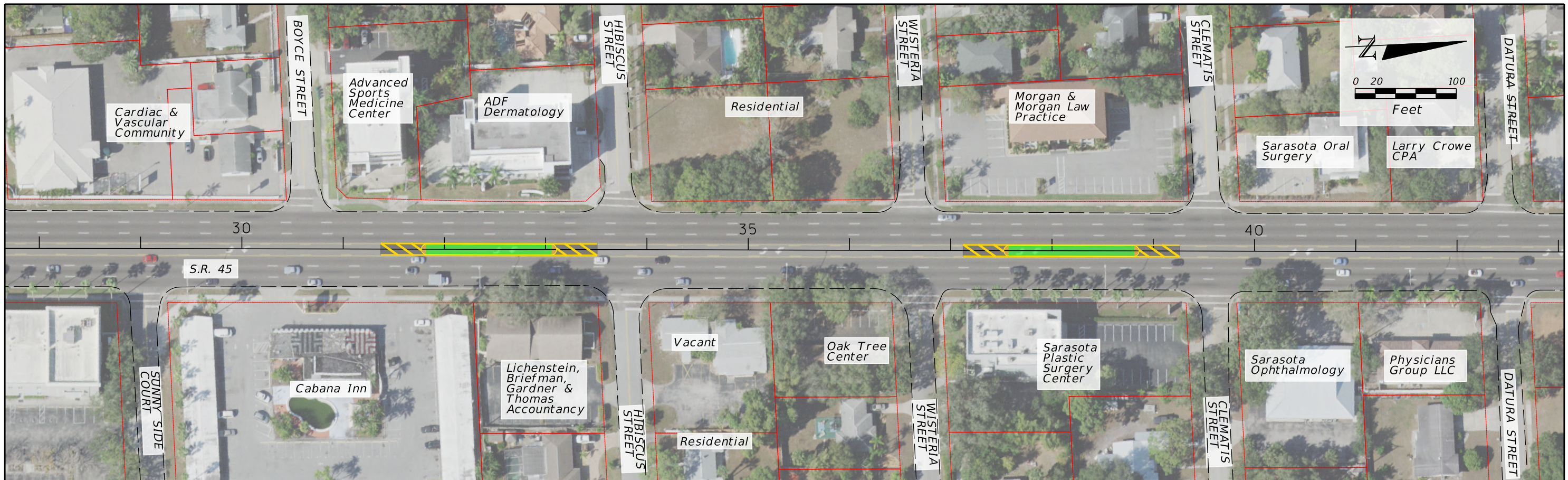
STATE OF FLORIDA  
DEPARTMENT OF TRANSPORTATION

IMPROVEMENT DIAGRAM

PAGE NO.

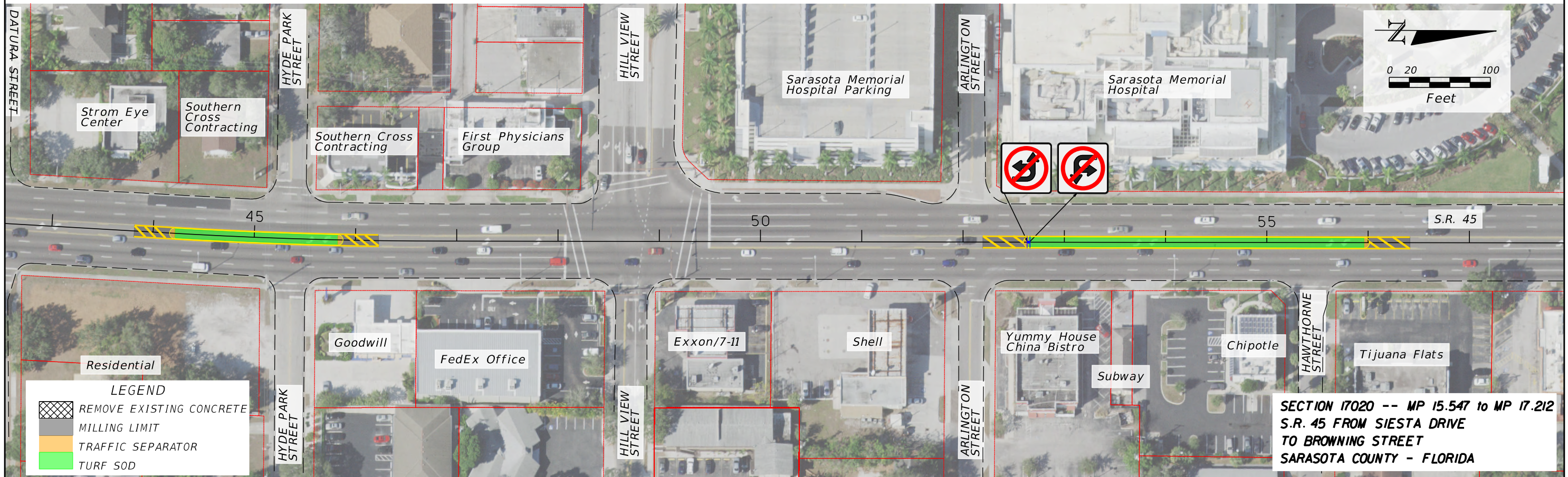
MATCHLINE B

MATCHLINE C



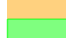



MATCHLINE C

MATCHLINE D



**LEGEND**

-  REMOVE EXISTING CONCRETE
-  MILLING LIMIT
-  TRAFFIC SEPARATOR
-  TURF SOD

**SECTION 17020 -- MP 15.547 to MP 17.212  
S.R. 45 FROM SIESTA DRIVE  
TO BROWNING STREET  
SARASOTA COUNTY - FLORIDA**

PROPERTY LABELS BASED ON STREETVIEW IMAGERY  
AVAILABLE FROM MAY 2018

Traffic Engineering Data Solutions, Inc.  
80 Spring Vista Drive DeBary, FL 32713 Phone: 386.753.0558 Fax: 386.753.0778

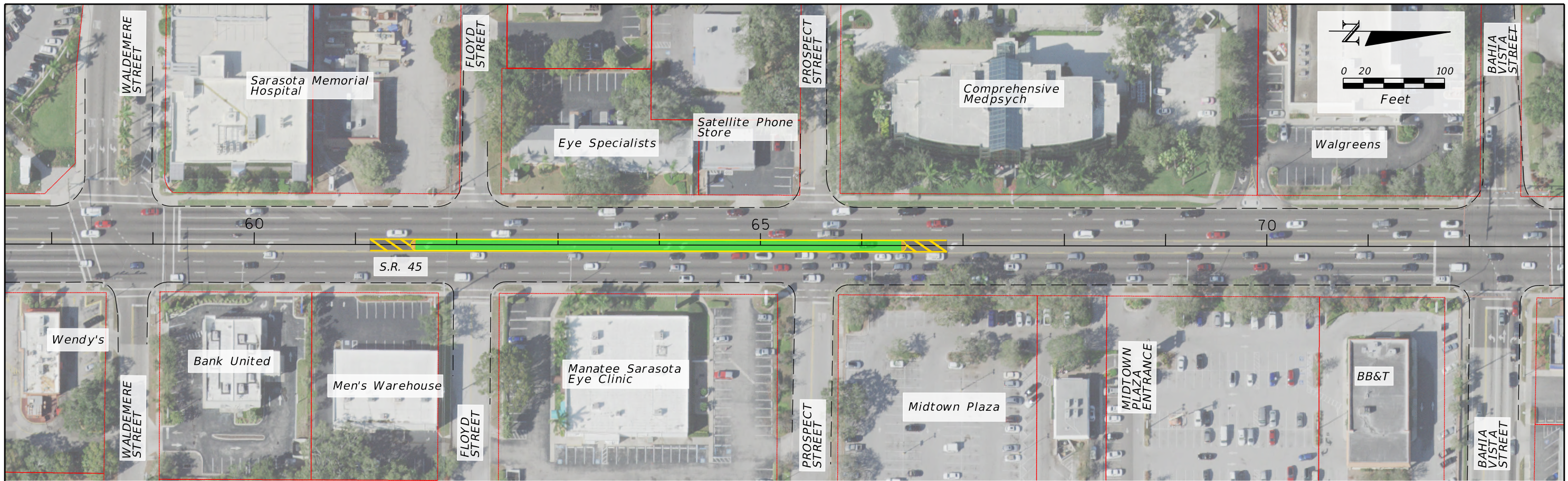
STATE OF FLORIDA  
DEPARTMENT OF TRANSPORTATION

IMPROVEMENT DIAGRAM

PAGE NO.

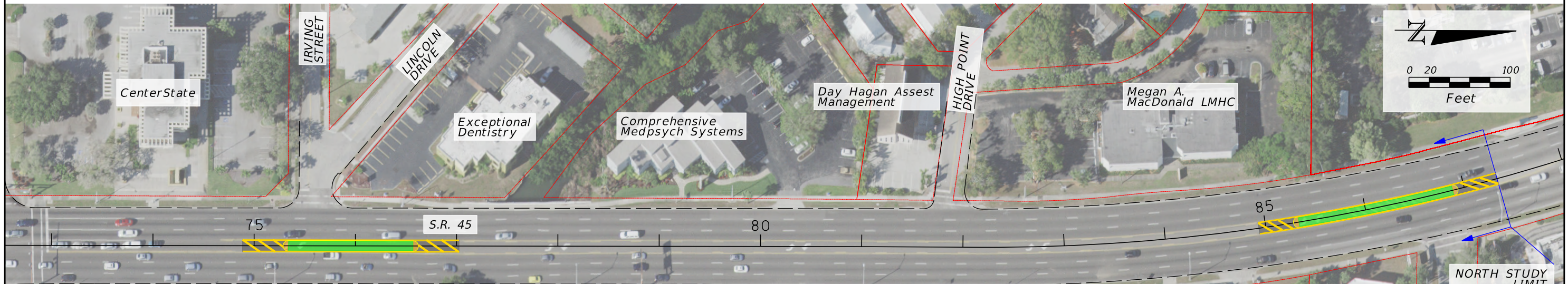
MATCHLINE D

MATCHLINE E




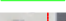


MATCHLINE E

MATCHLINE E



**LEGEND**

-  REMOVE EXISTING CONCRETE
-  MILLING LIMIT
-  TRAFFIC SEPARATOR
-  TURF SOD

**SECTION 17020 -- MP 15.547 to MP 17.212**  
**S.R. 45 FROM SIESTA DRIVE**  
**TO BROWNING STREET**  
**SARASOTA COUNTY - FLORIDA**

PROPERTY LABELS BASED ON STREETVIEW IMAGERY  
 AVAILABLE FROM MAY 2018

Traffic Engineering Data Solutions, Inc.  
 80 Spring Vista Drive DeBary, FL 32713  
 Phone: 386.753.0558 Fax: 386.753.0778

STATE OF FLORIDA  
 DEPARTMENT OF TRANSPORTATION

IMPROVEMENT DIAGRAM

PAGE NO.