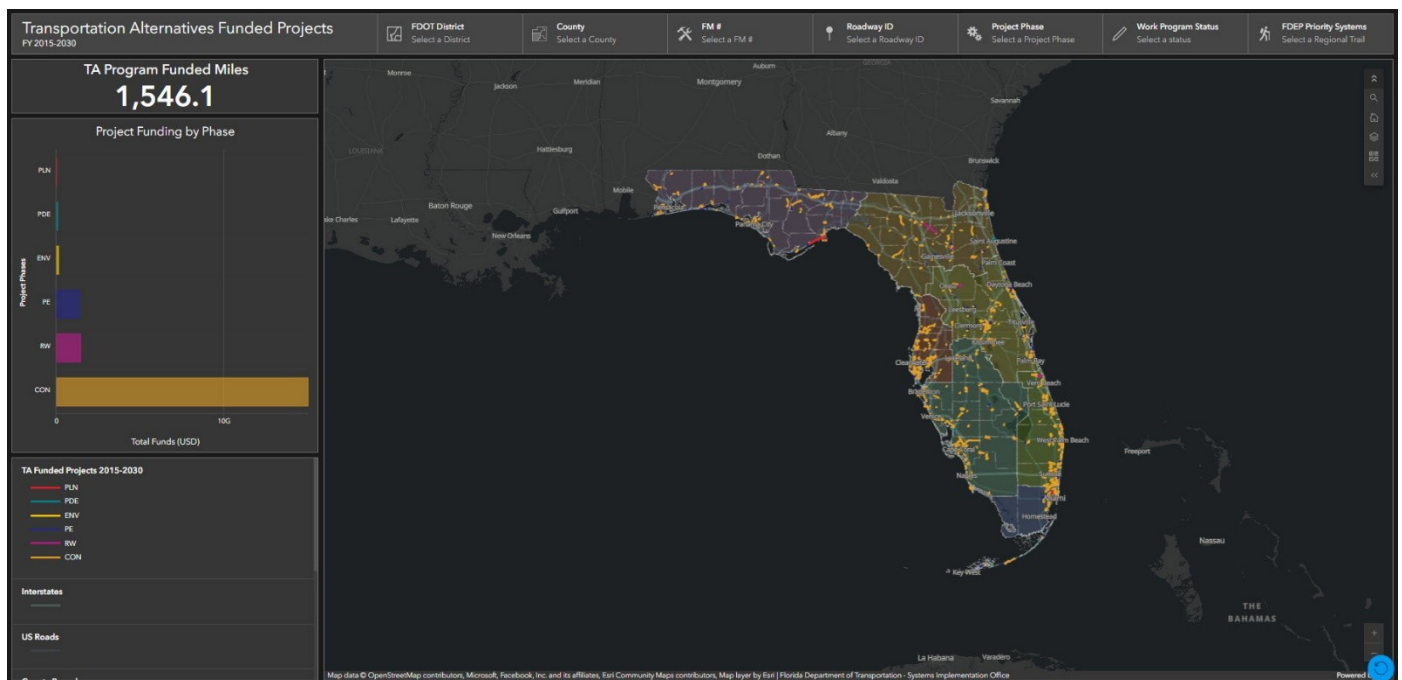




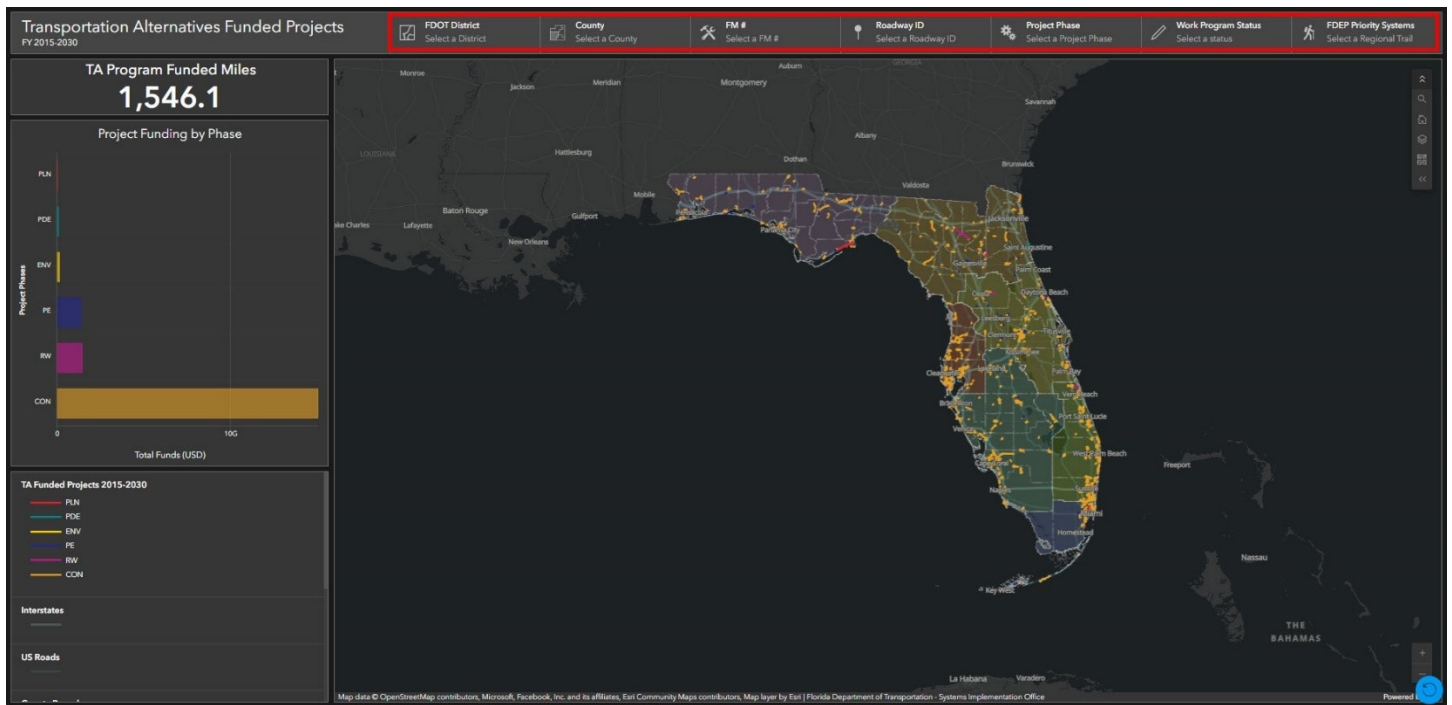
# Transportation Alternatives (TA) Funded Projects Dashboard How-To Guide

The TA Funded Projects Dashboard displays projects funded by the Transportation Alternatives Program since 2015, as well as projects included in the current Five-Year Work Program. Information from each project comes from the Office of Work Program and Budget. Data is extracted annually after the Department's Five-Year Adopted Work Program is finalized on July 1st and is georeferenced using Roadway IDs and mileposts along each route. This document is designed to guide users in navigating the dashboard's features and data.

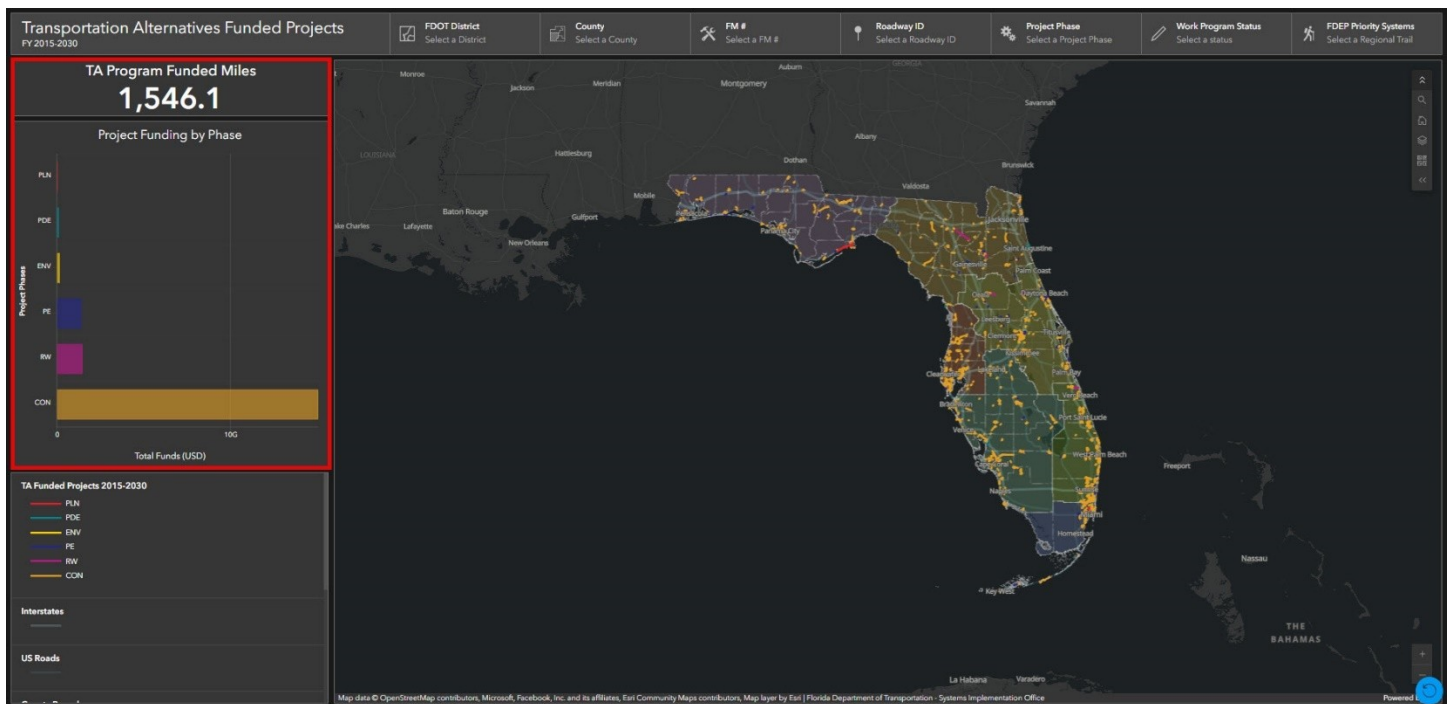
When the dashboard is opened, the default view appears (Figure 1). The data can be filtered based on a geographic extent or attribute feature defined by the user (Figure 2). The sum of funded project extents (in miles) can be viewed alongside a bar graph displaying the sum of funding by project phase (Figure 3).



**Figure 1 – Default view of dashboard**

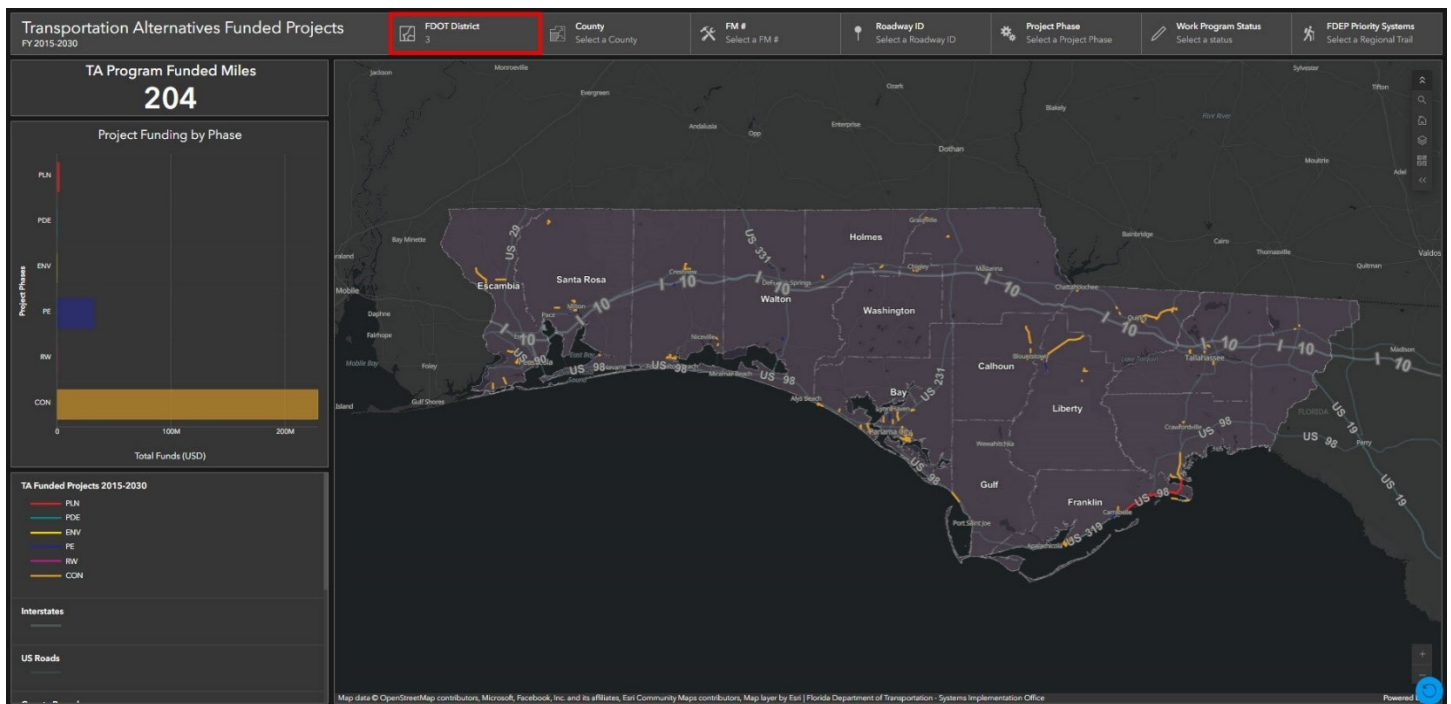


**Figure 2 – Data filter pane**

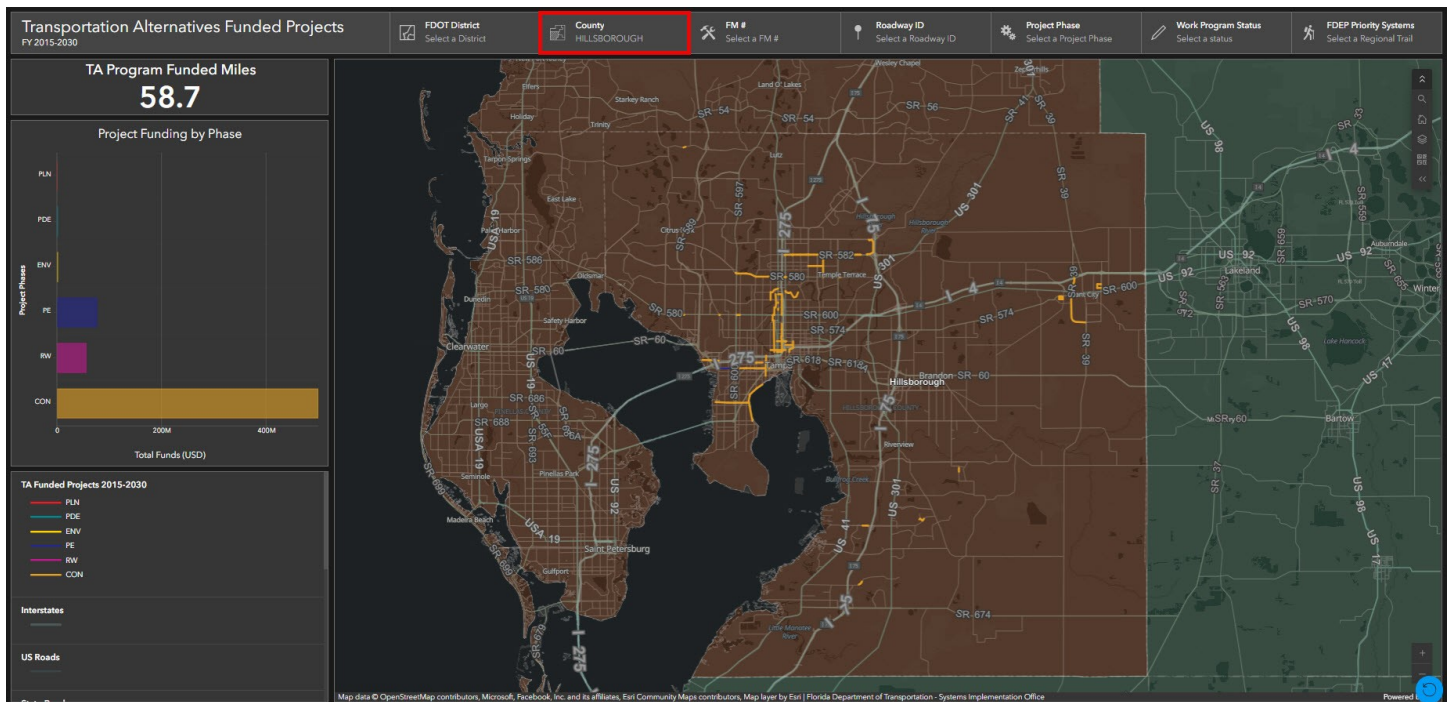


**Figure 3 – Dynamic statistics pane based on filters set by the user**

The images below will provide examples of how the data can be filtered based on the user's preferences.

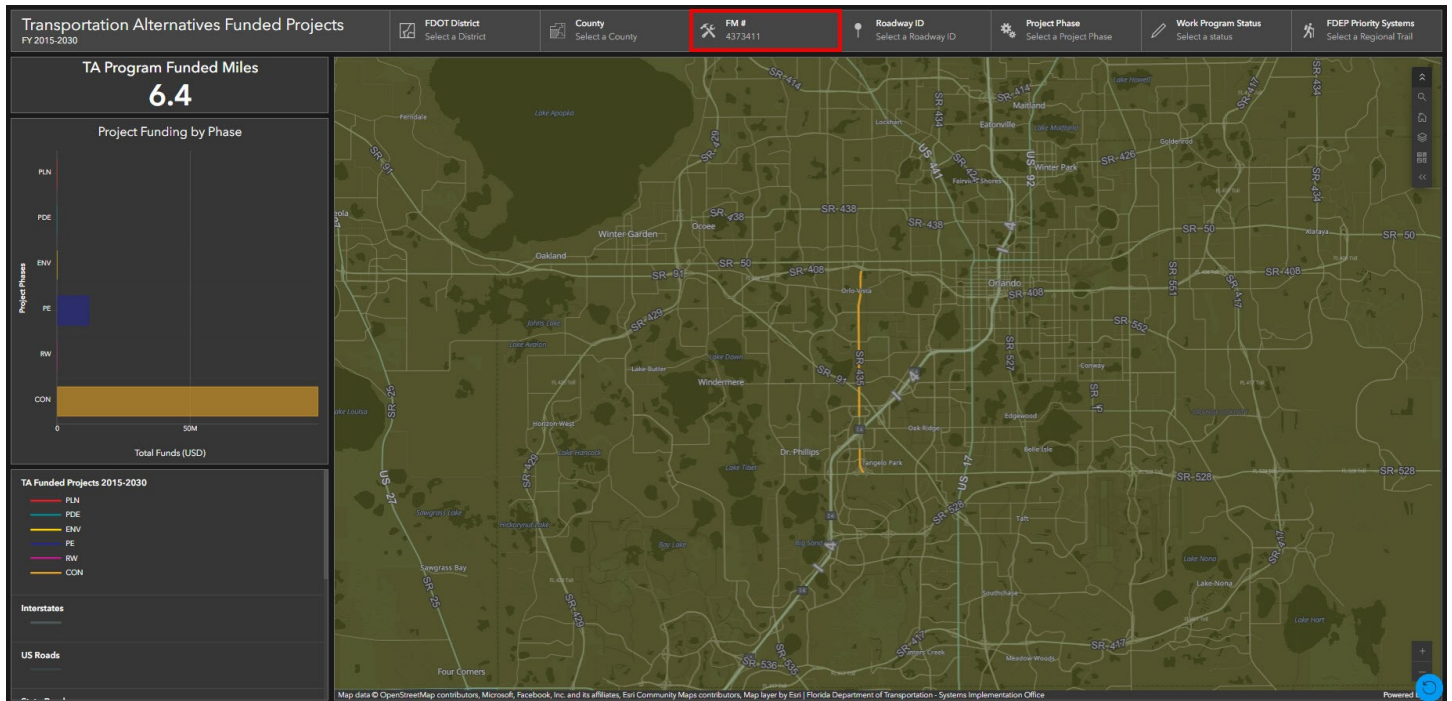


**Figure 4 – Filter by FDOT District**

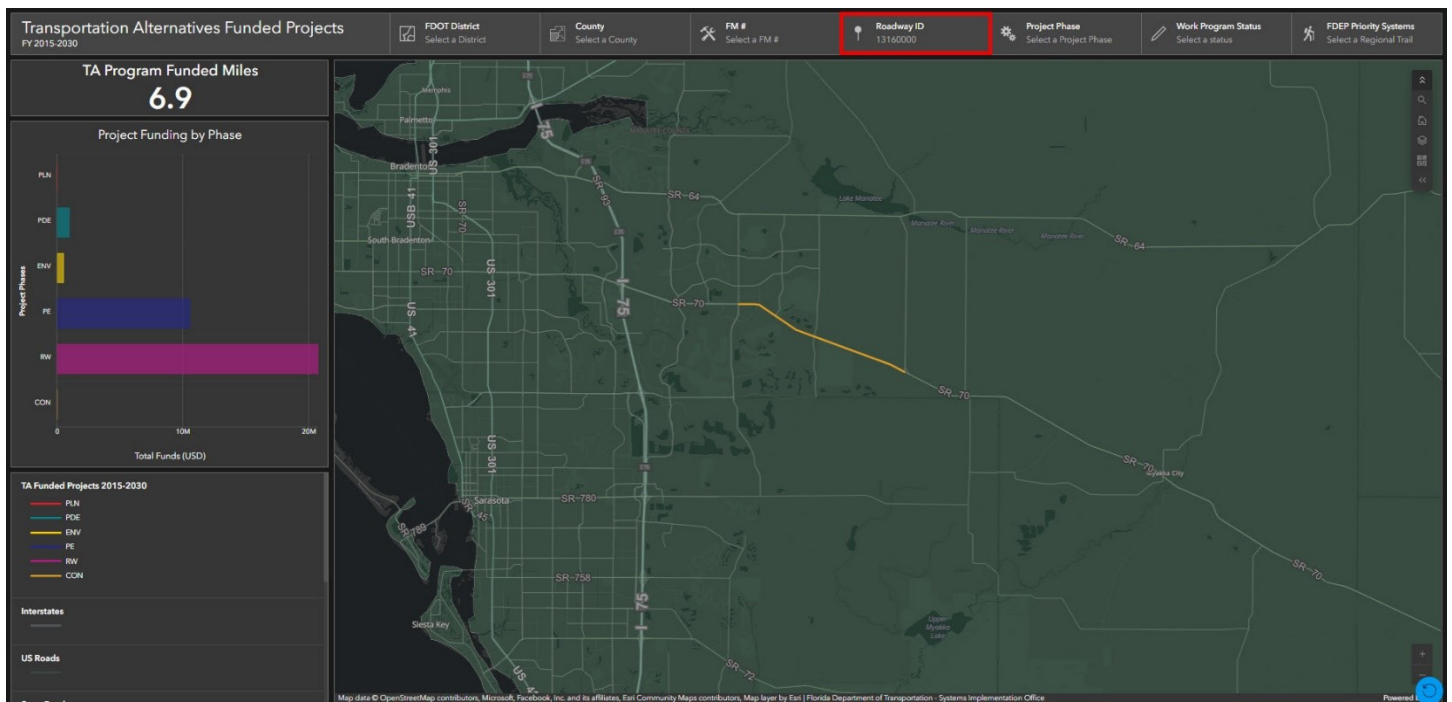


**Figure 5 – Filter by County**

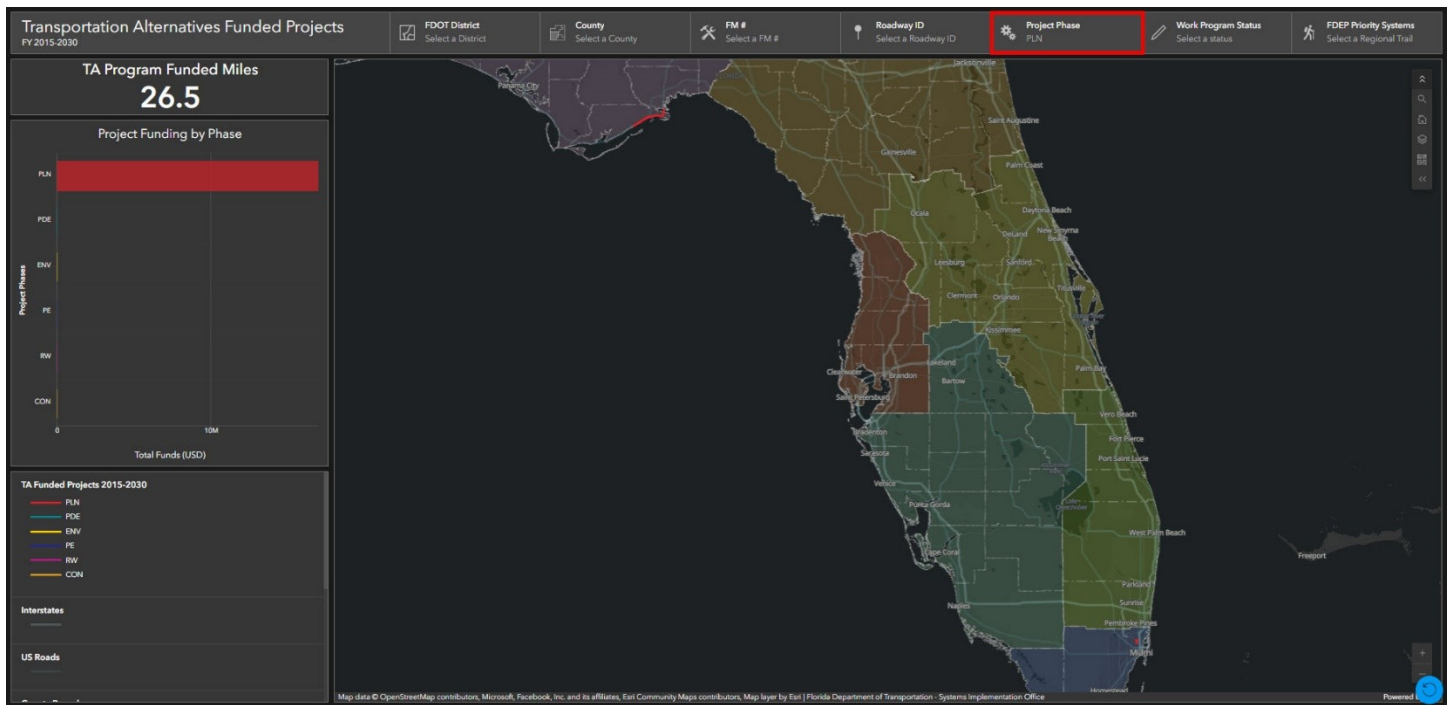




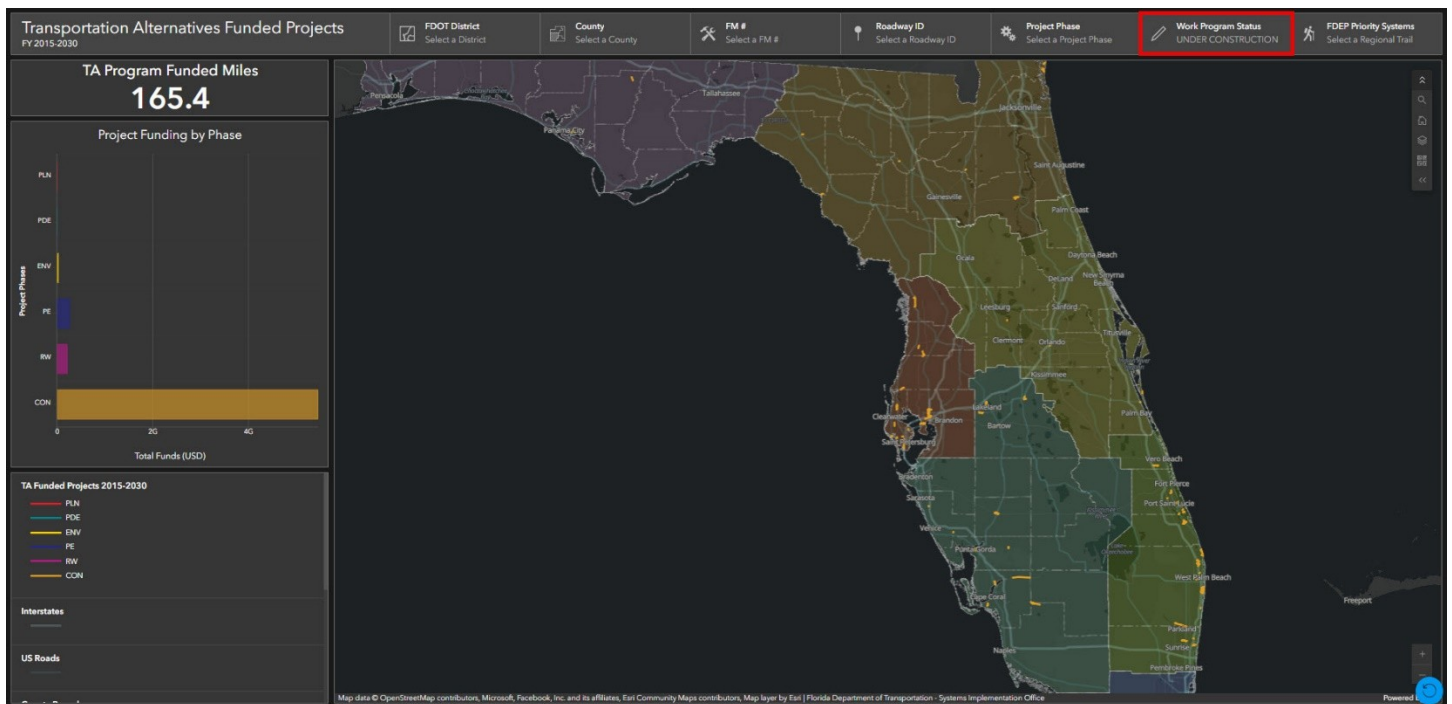
**Figure 6 – Filter by Financial Management (FM) Number**



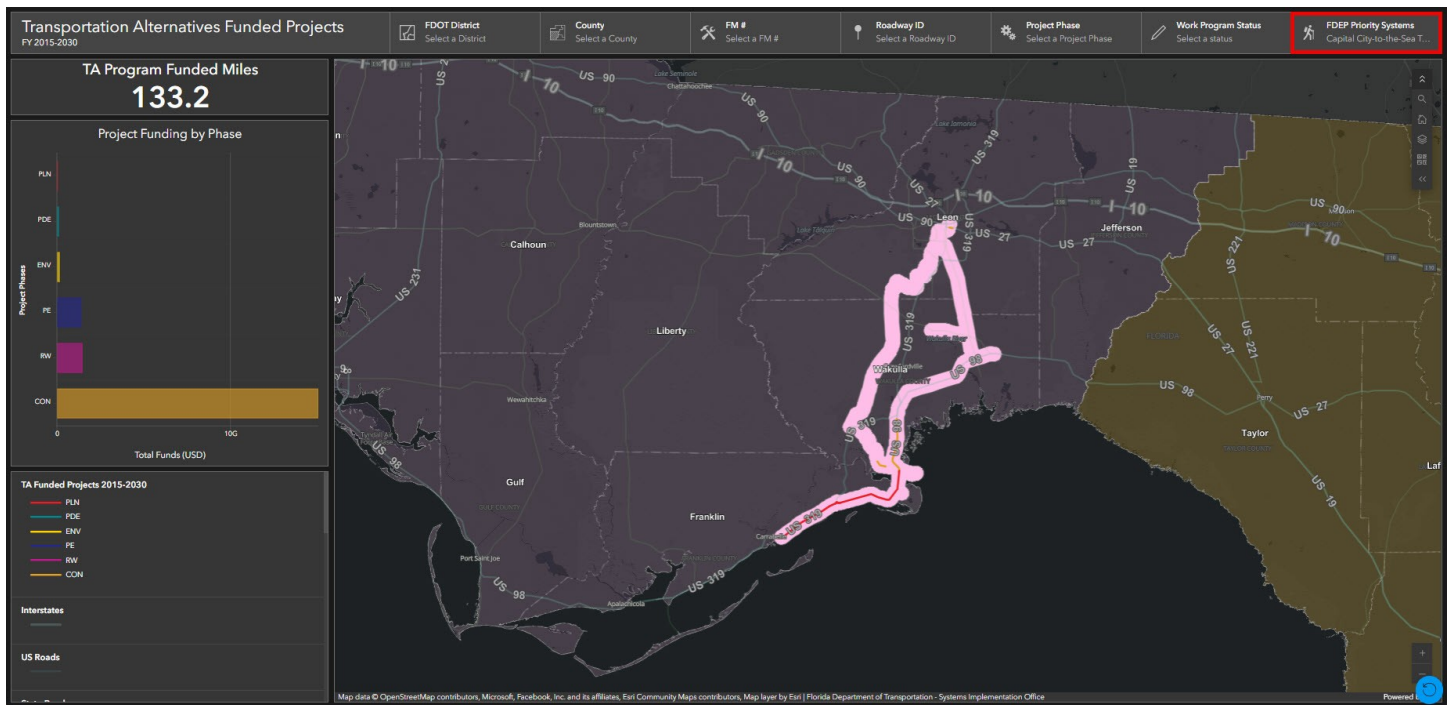
**Figure 7 – Filter by Roadway ID**



**Figure 8 – Filter by Project Phase**

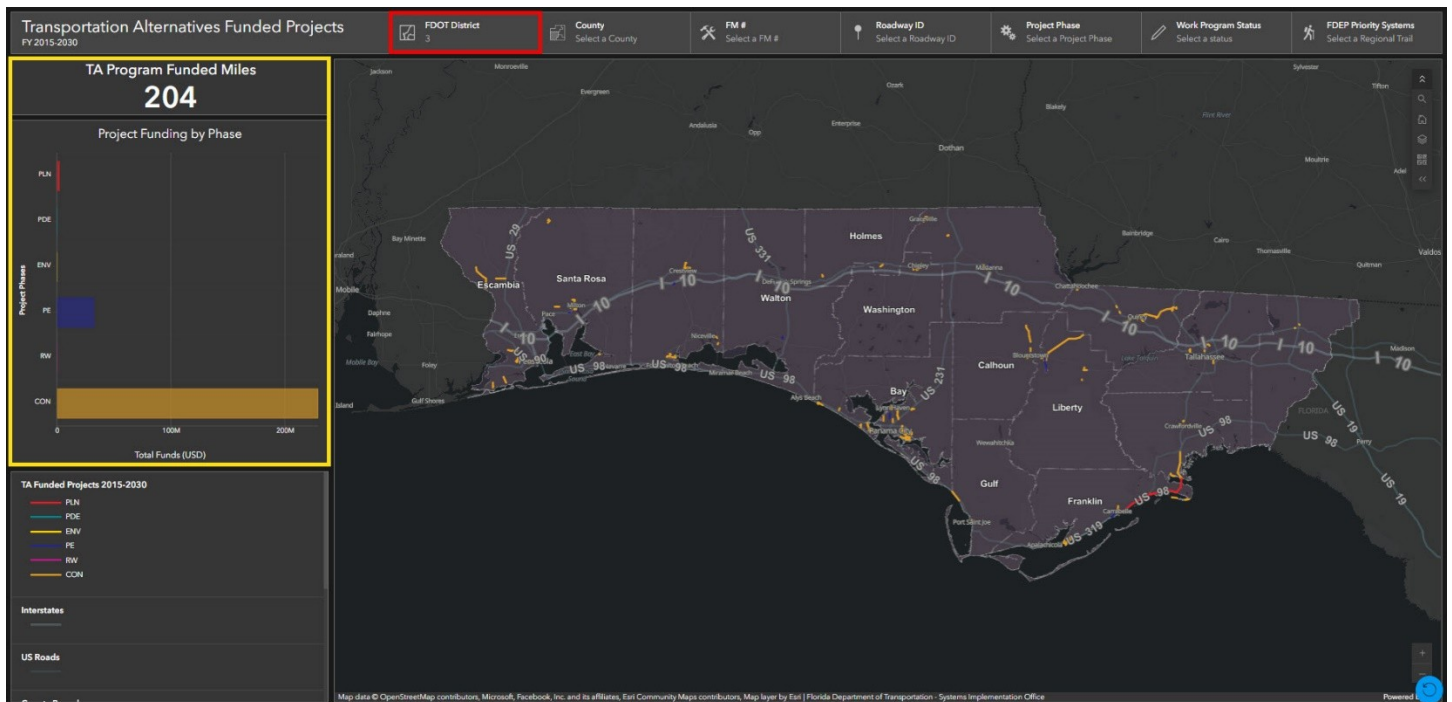


**Figure 9 – Filter by Work Program Status**



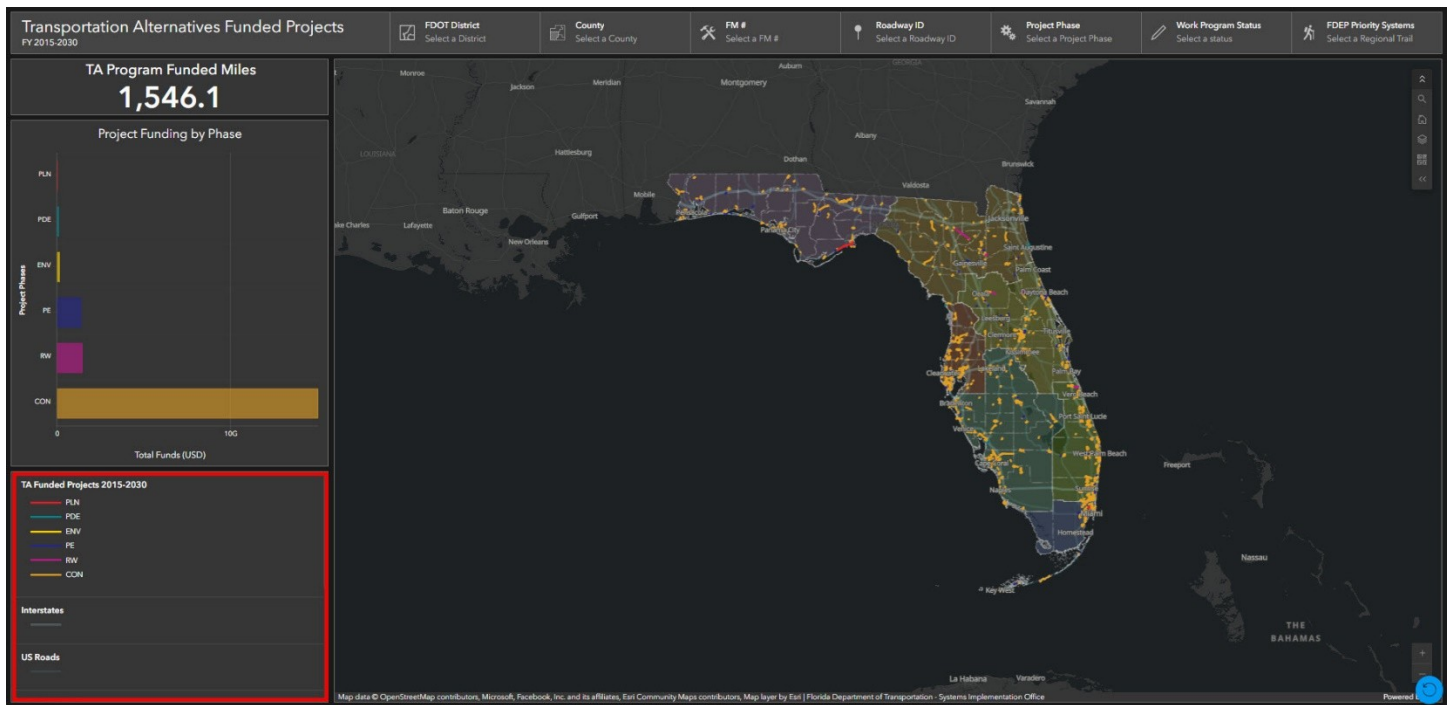
**Figure 10 – Filter by FDEP Regional Trail Priority System (Refer to Figure 15 to view FDEP Regional Trail layer on map frame)**

The images below will provide examples of how to understand and change the statistics pane.

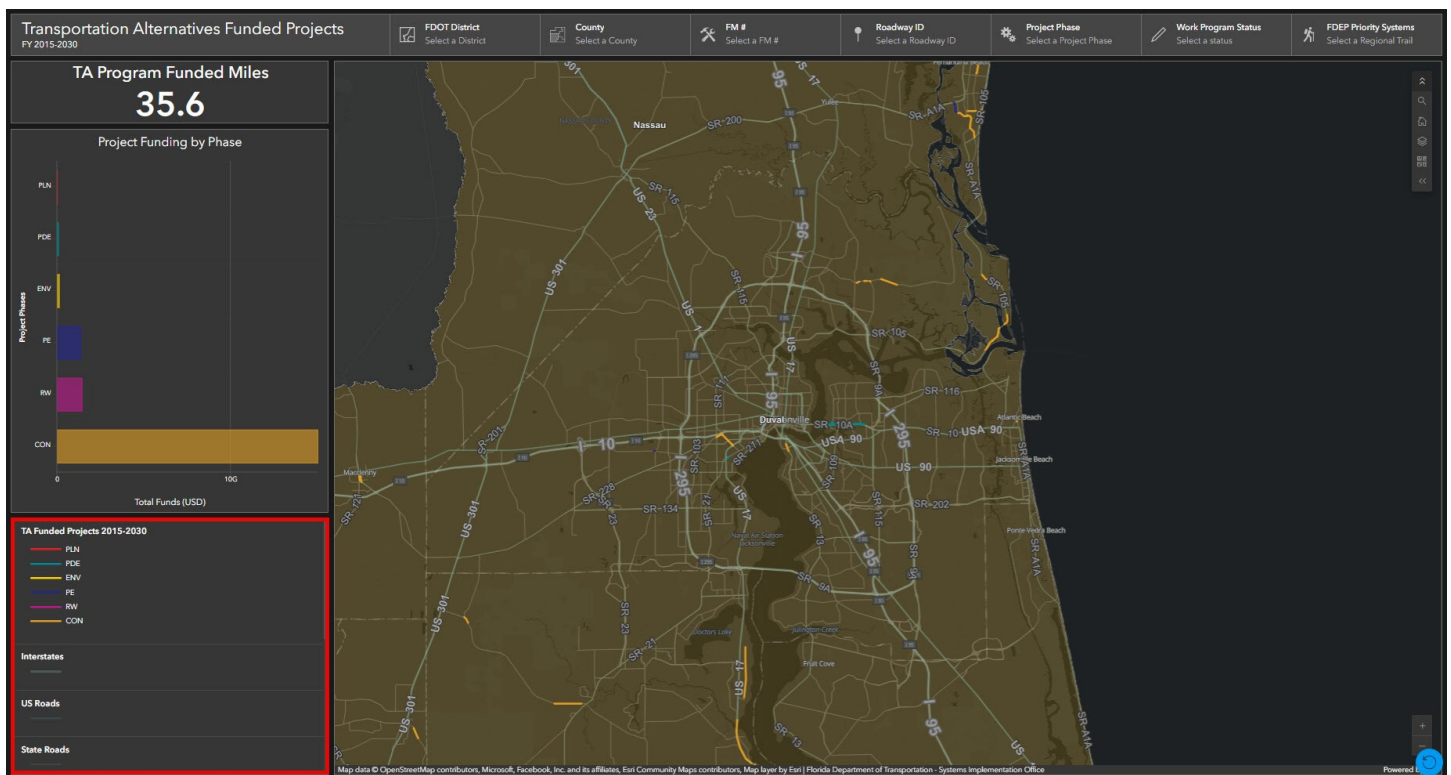


**Figure 11 – Dynamic statistics after filter is applied**



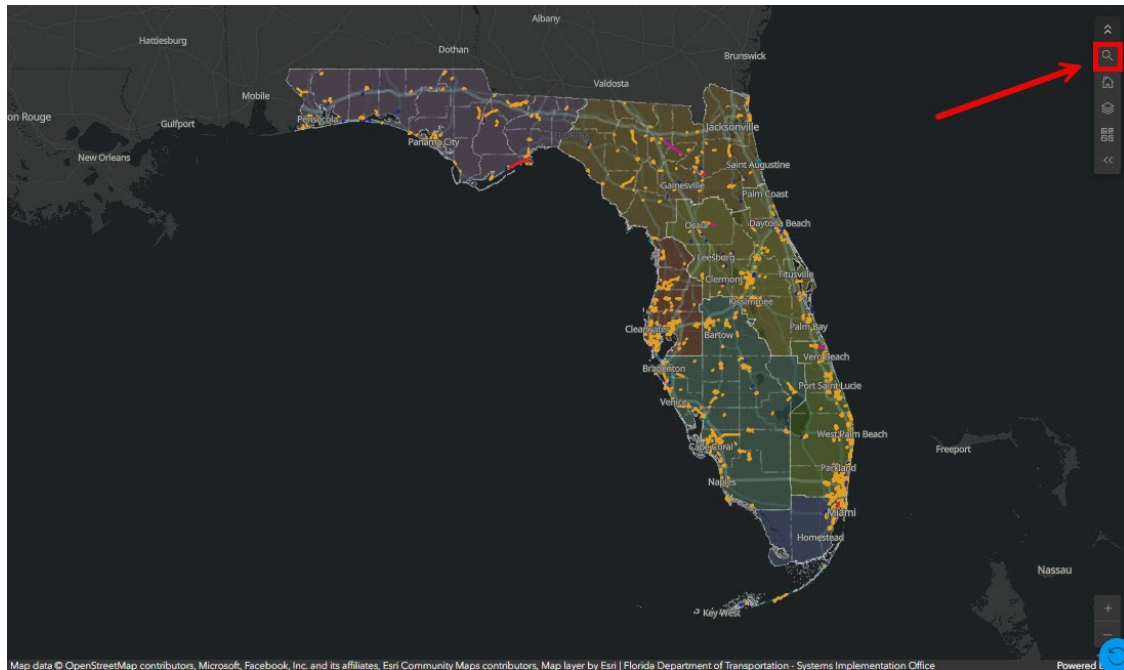


**Figure 12.1 – Dynamic legend that changes based on the visible map layers**

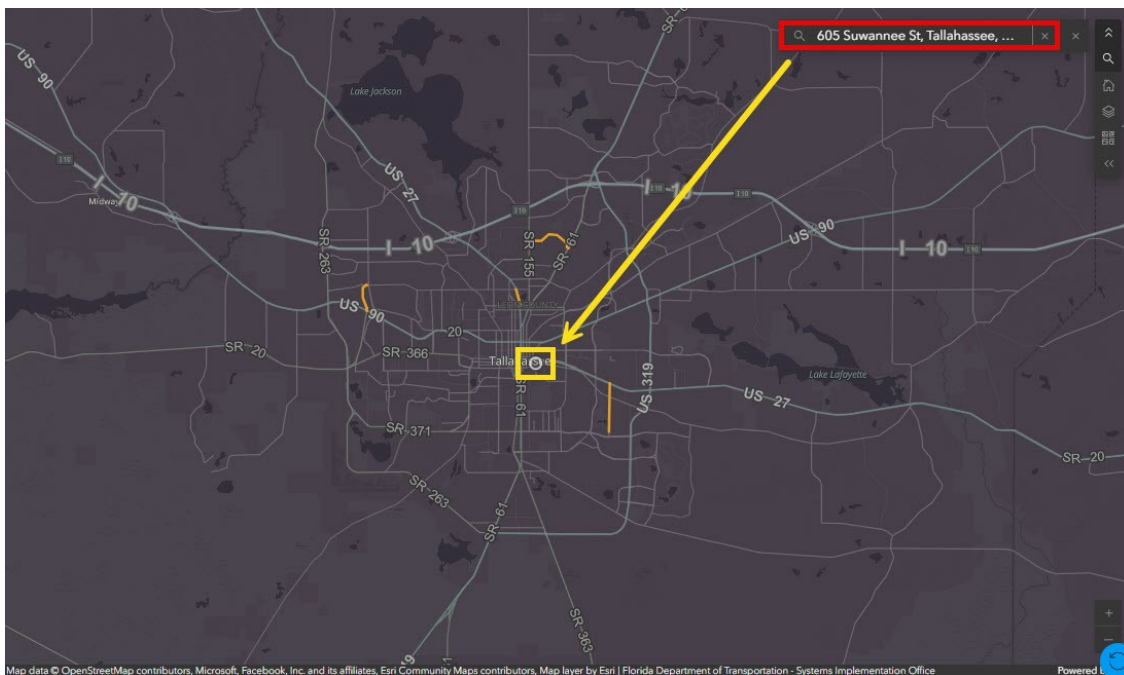


**Figure 12.2 – Dynamic legend that changes based on the visible map layers**

The images below will provide examples of how the map frame can be configured to the user's preferences.

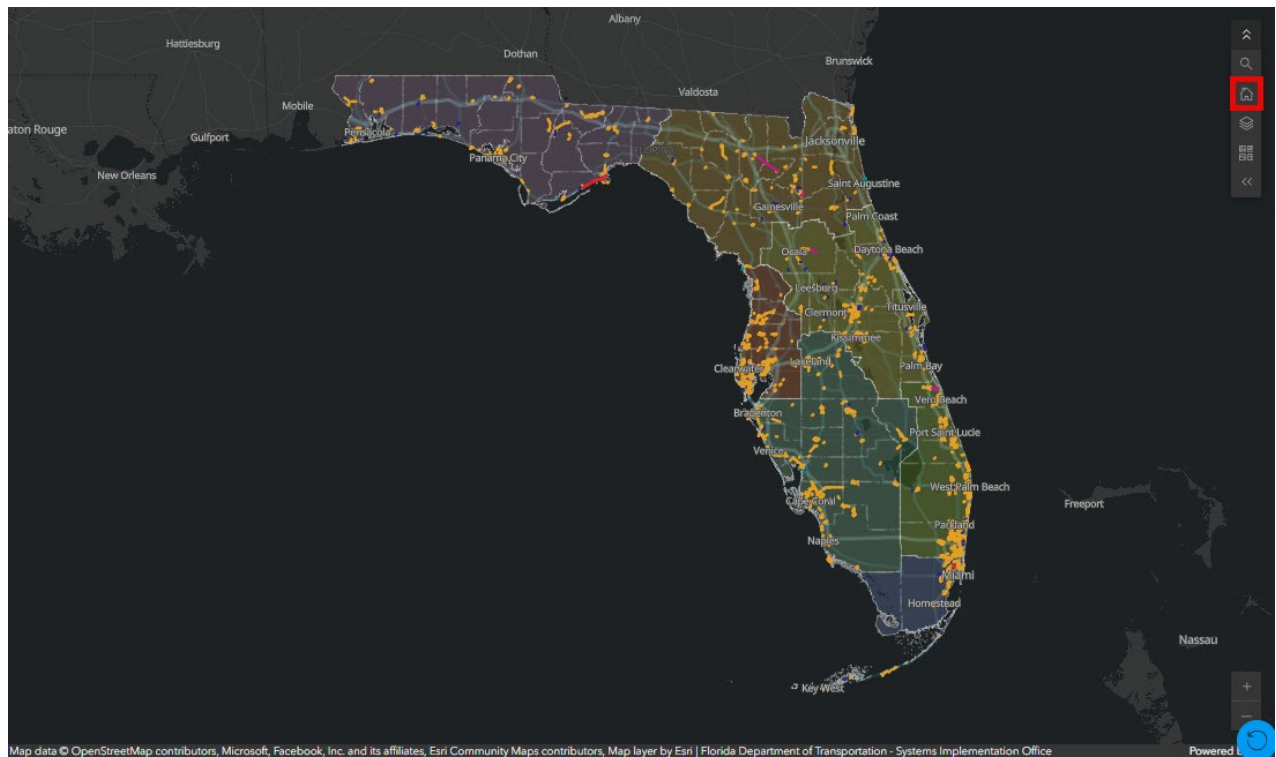


**Figure 13.1 – Search for a location using an address or a specific point of interest (e.g. public library or park)**

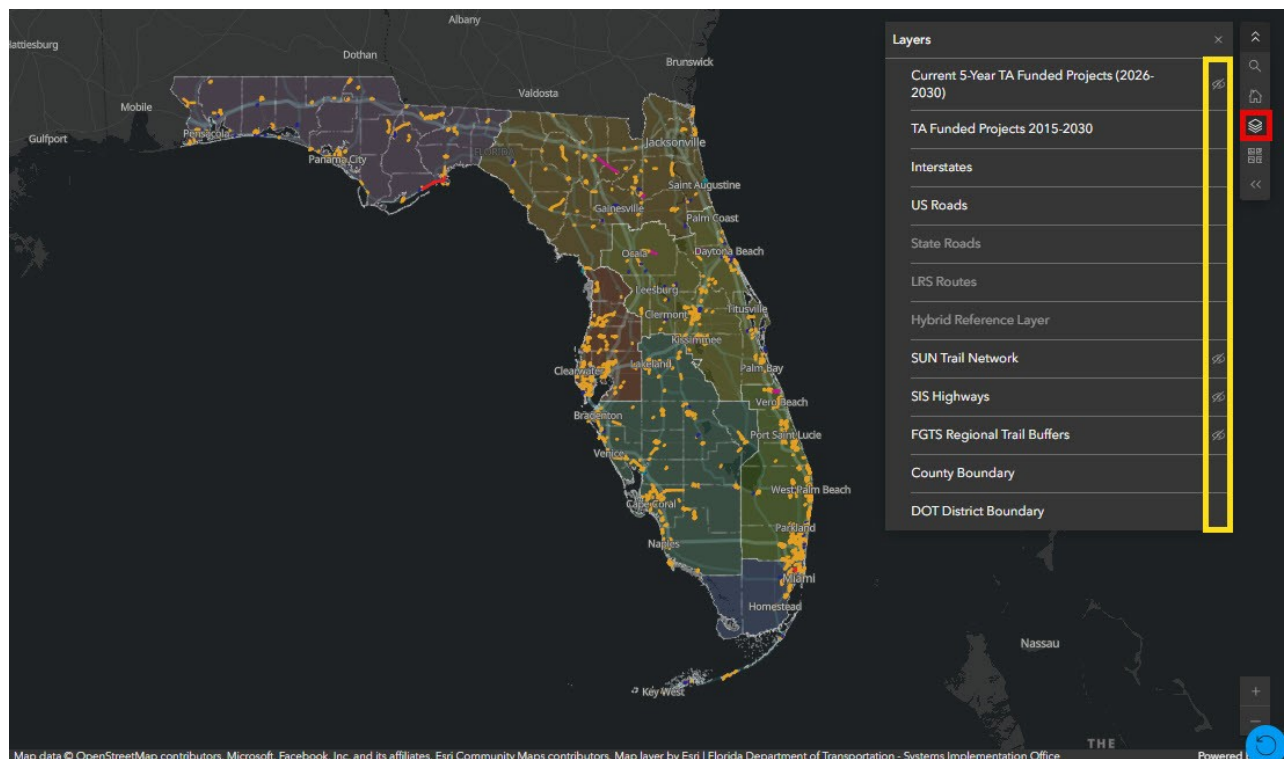


**Figure 13.2 – Search results when typing an address**

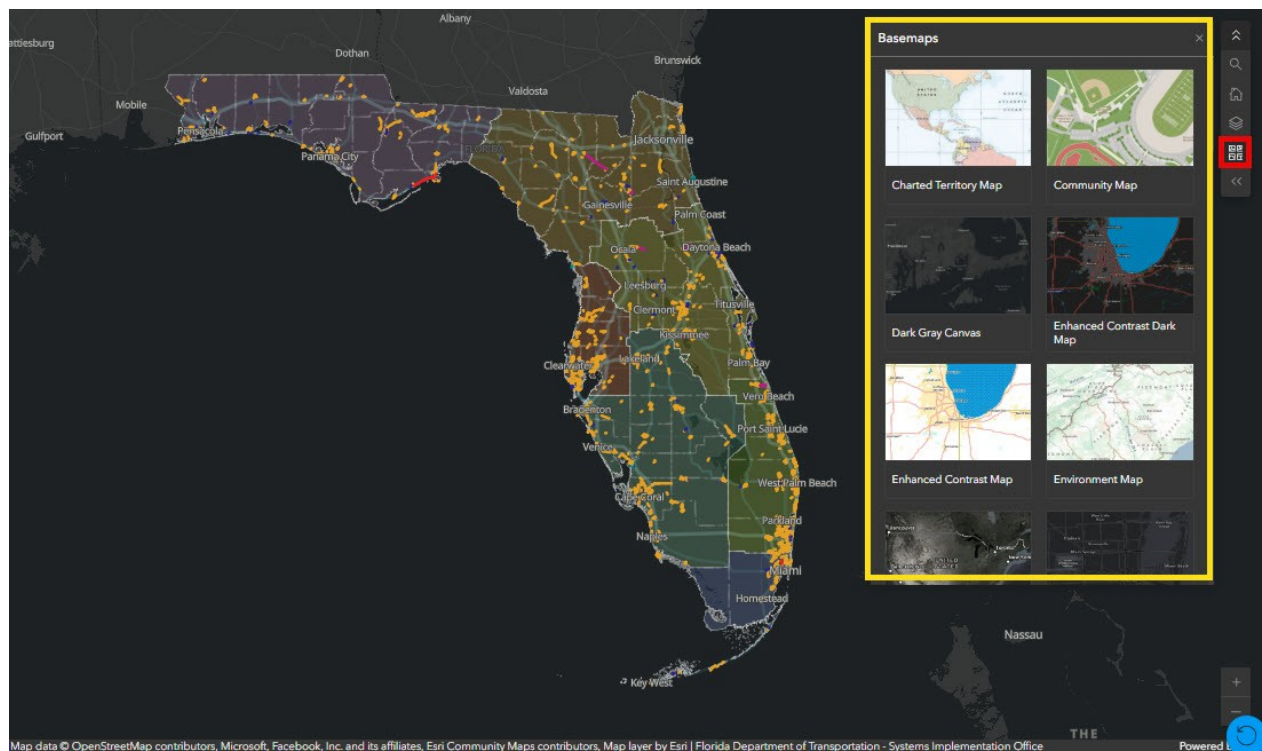




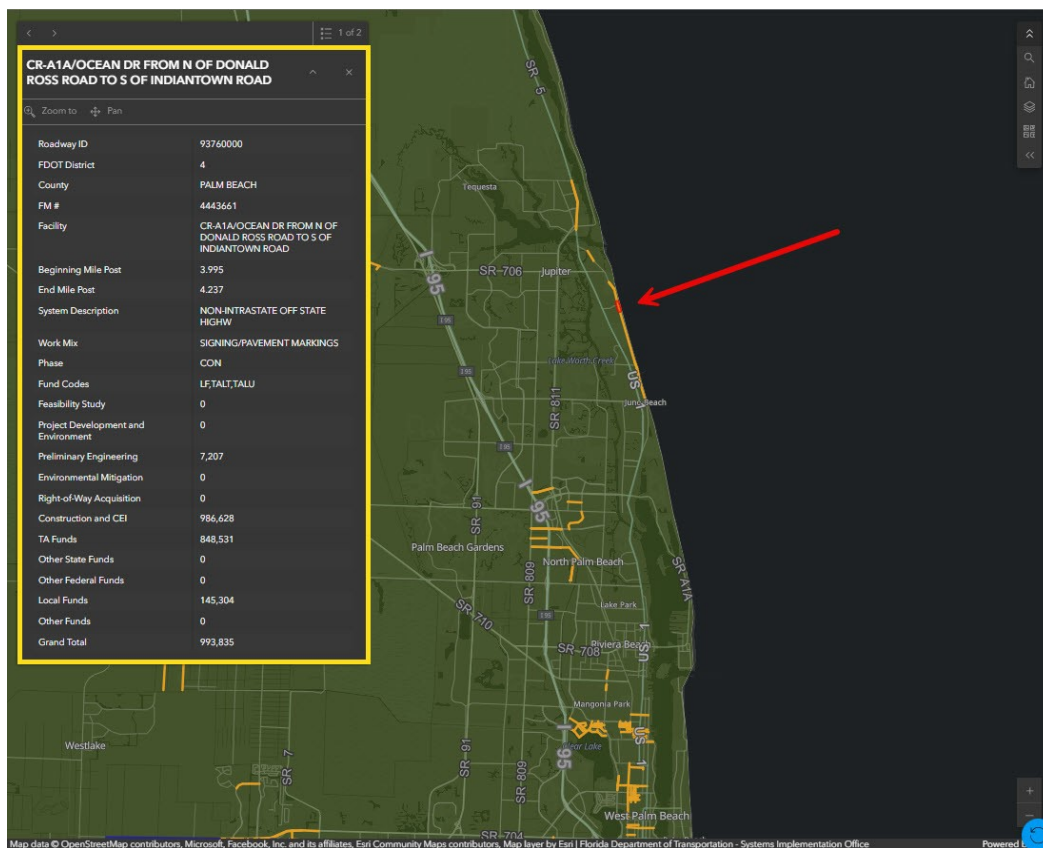
**Figure 14 – Revert map frame to default statewide extent**



**Figure 15 – View visible layers and toggle layers on/off**



**Figure 16 – Switch basemap**



**Figure 17 – Click on a TA Funded Project to view additional information**