

Transportation Alternatives Set-Aside Program (TA) Funded Projects Dashboard: How-To Guide

The TA Funded Projects Dashboard displays projects funded by the Transportation Alternatives program for the current 5-year work program (FY 2025 – FY 2029). This document is intended to guide users in navigating the dashboard’s features and data.

Figure 1 shows the default view that populates the screen once the dashboard is opened. The data can be filtered based on a geographic extent or attribute feature defined by the user (Figure 2). The sum of funded project extents (in miles) can be viewed alongside a bar graph displaying the sum of funding by project phase (Figure 3).

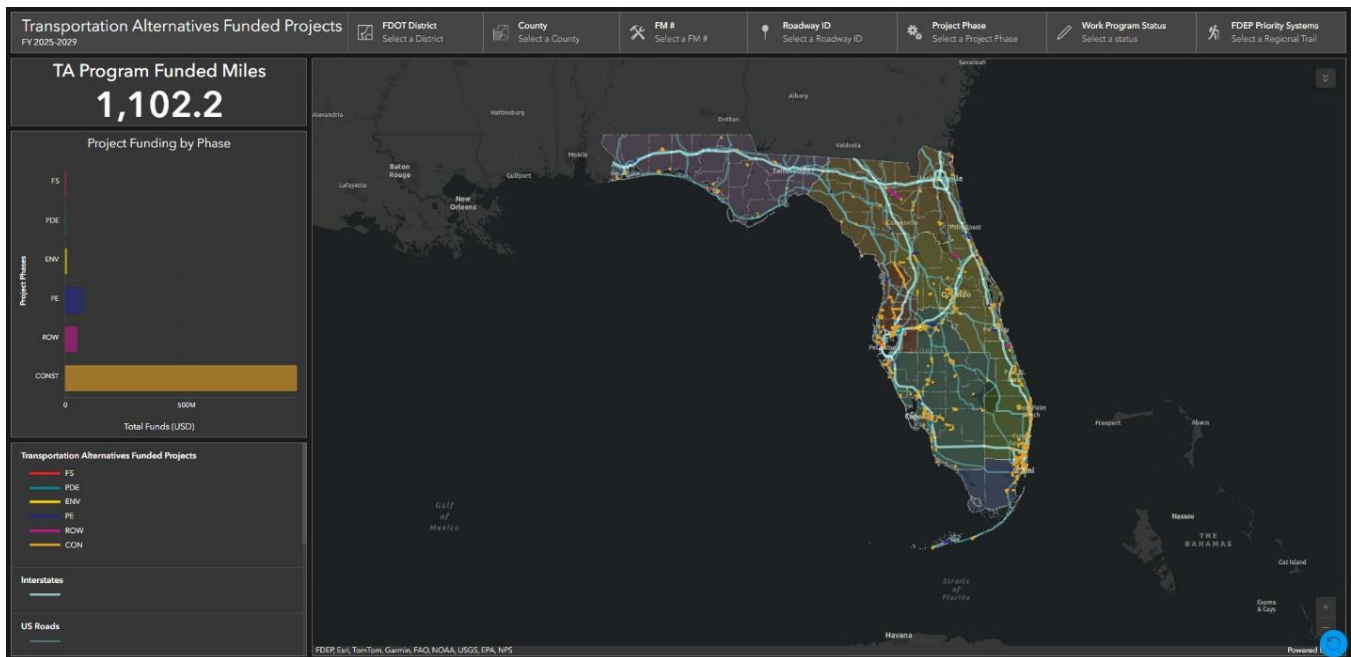


Figure 1 – Default view of dashboard.

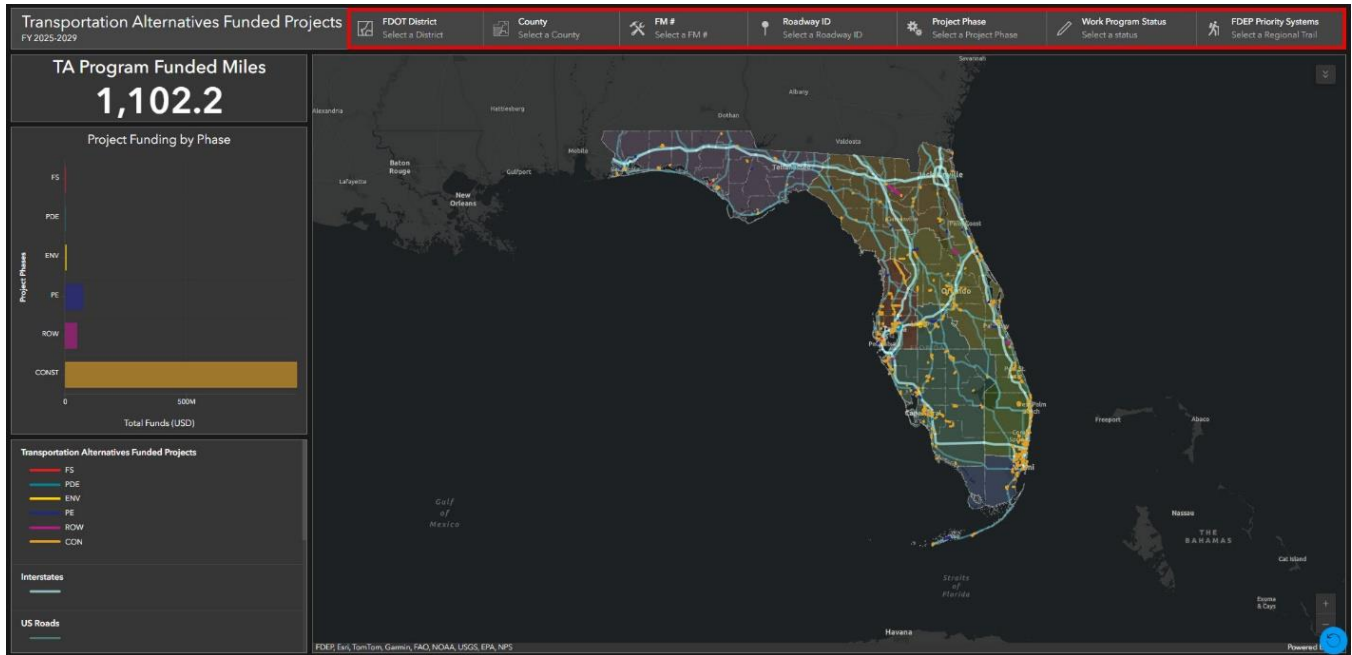


Figure 2 – Data filter pane.

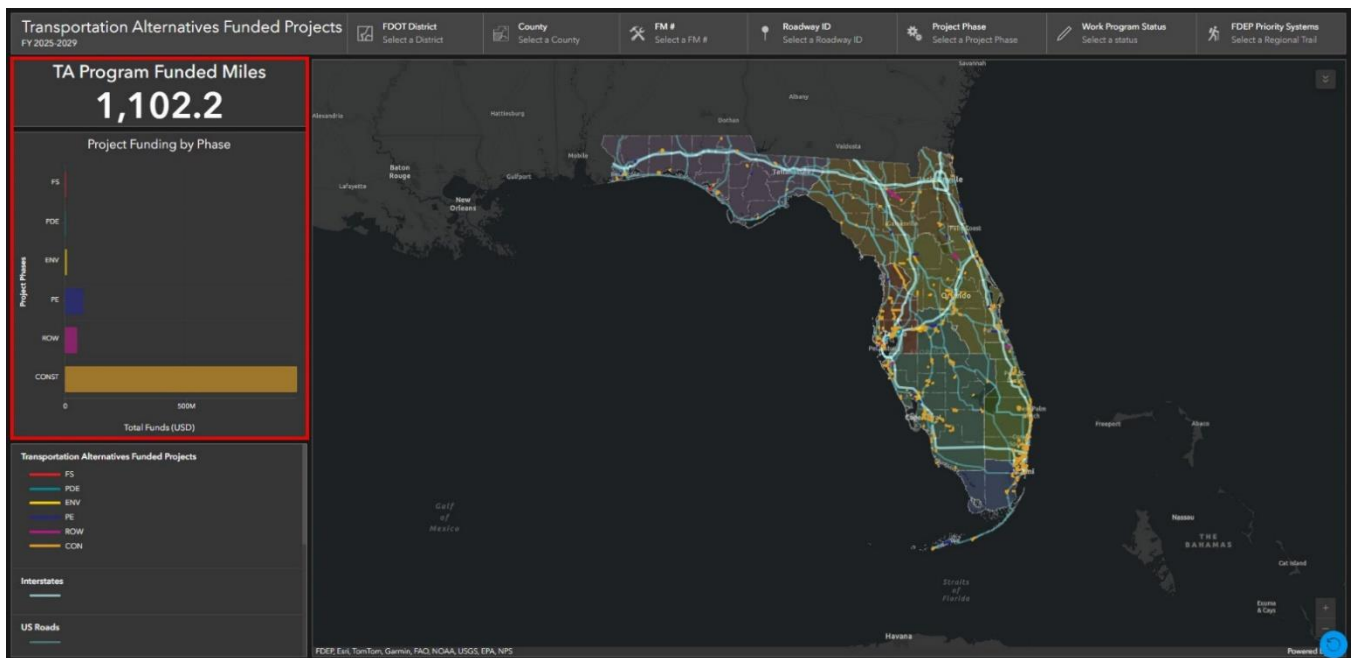


Figure 3 – Dynamic statistics pane based on filters set by the user.

Figures 4 - 10 provide examples of how the data can be filtered based on the user's preferences.

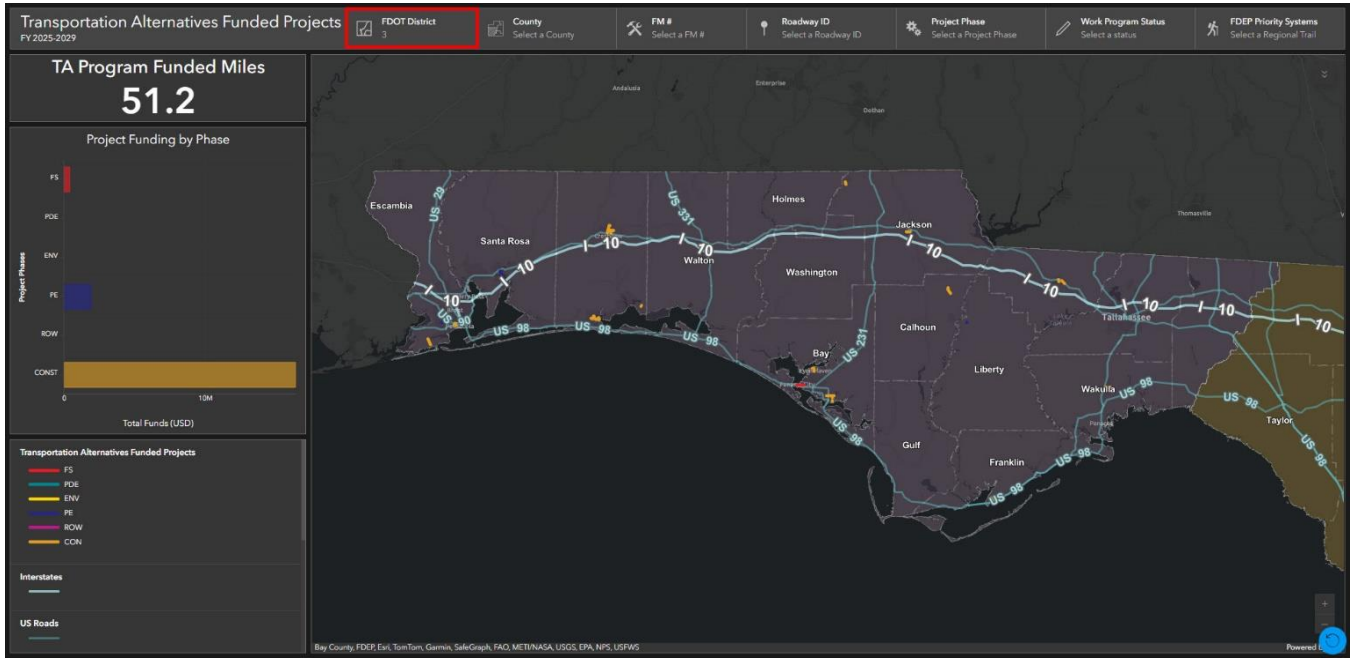


Figure 4 – Filter by FDOT District.

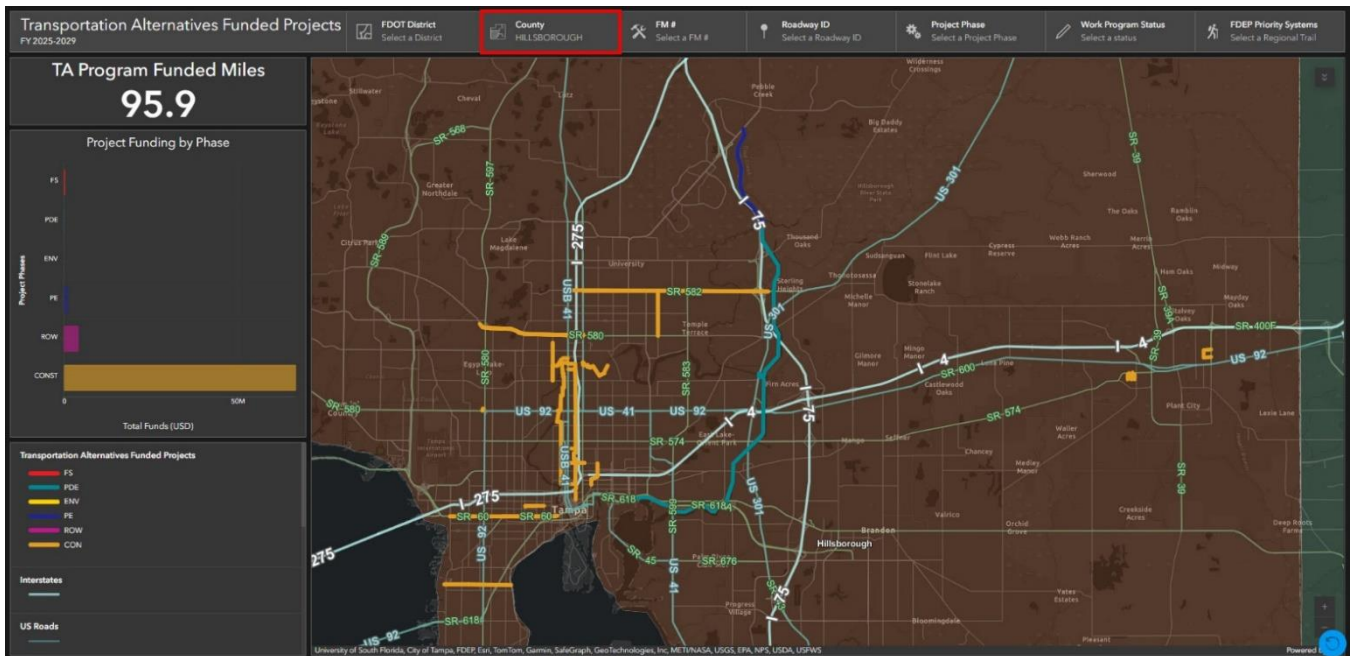


Figure 5 – Filter by County.

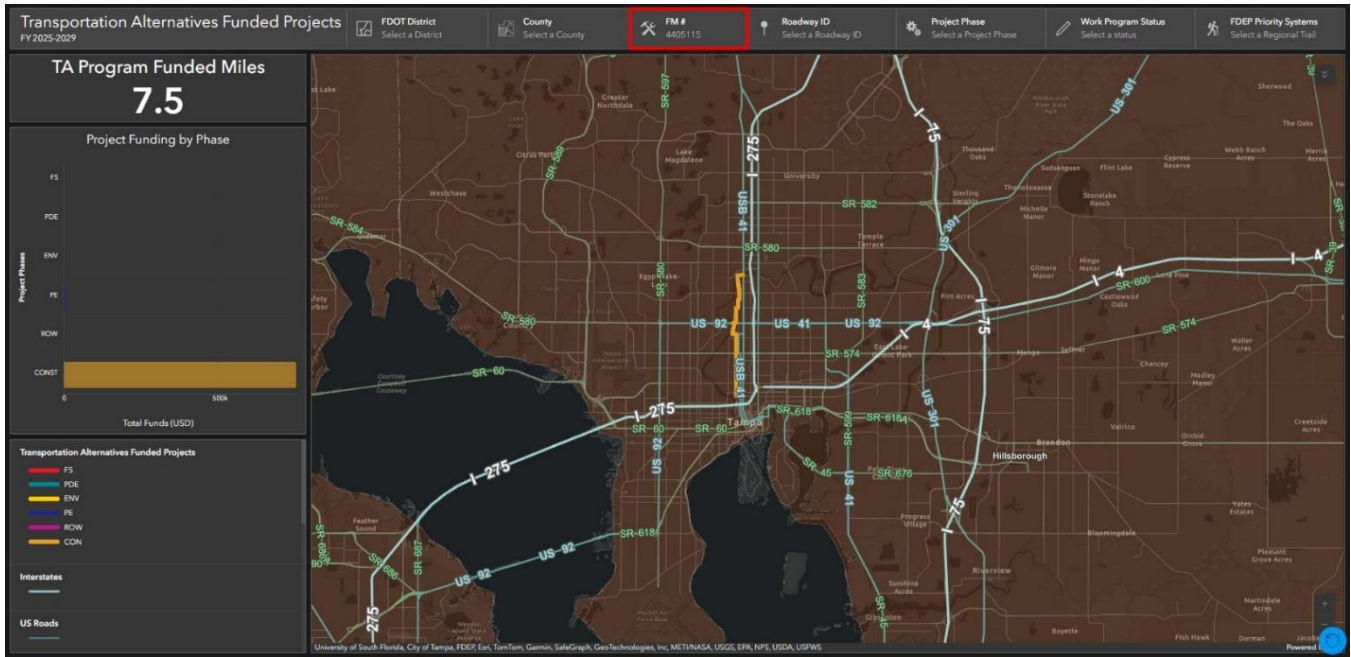


Figure 6 – Filter by Financial Management Number.

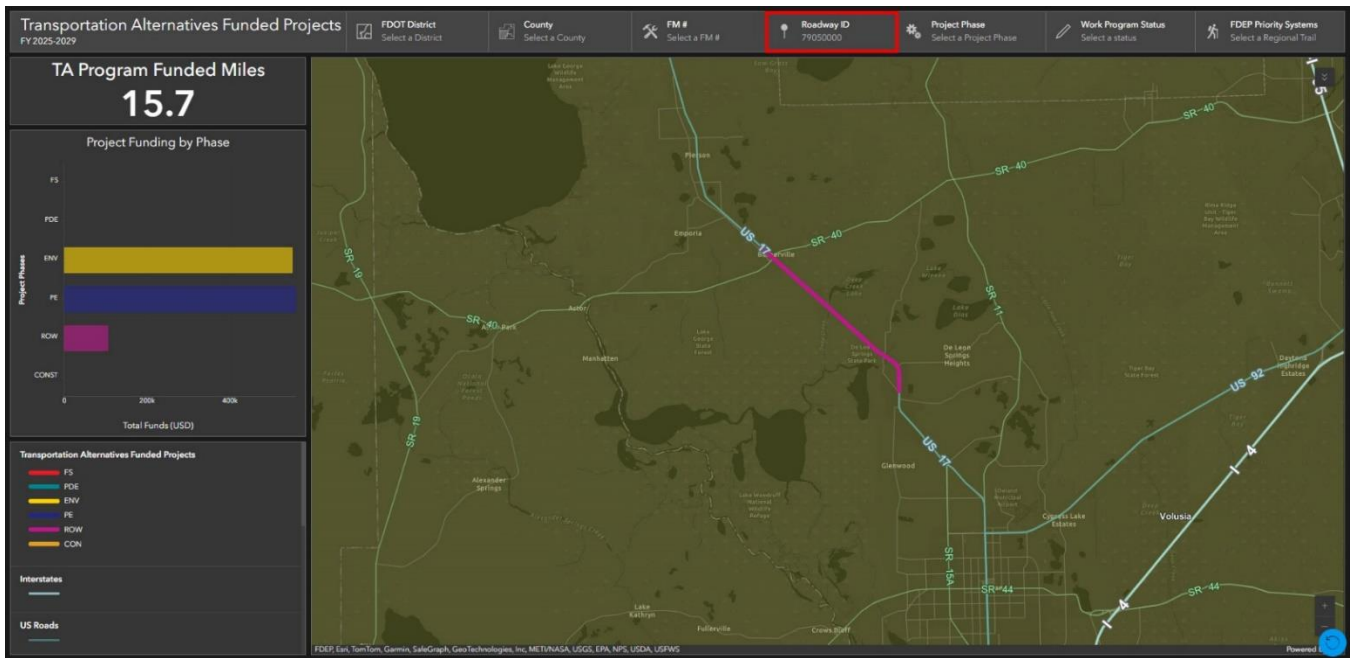


Figure 7 – Filter by Roadway ID.

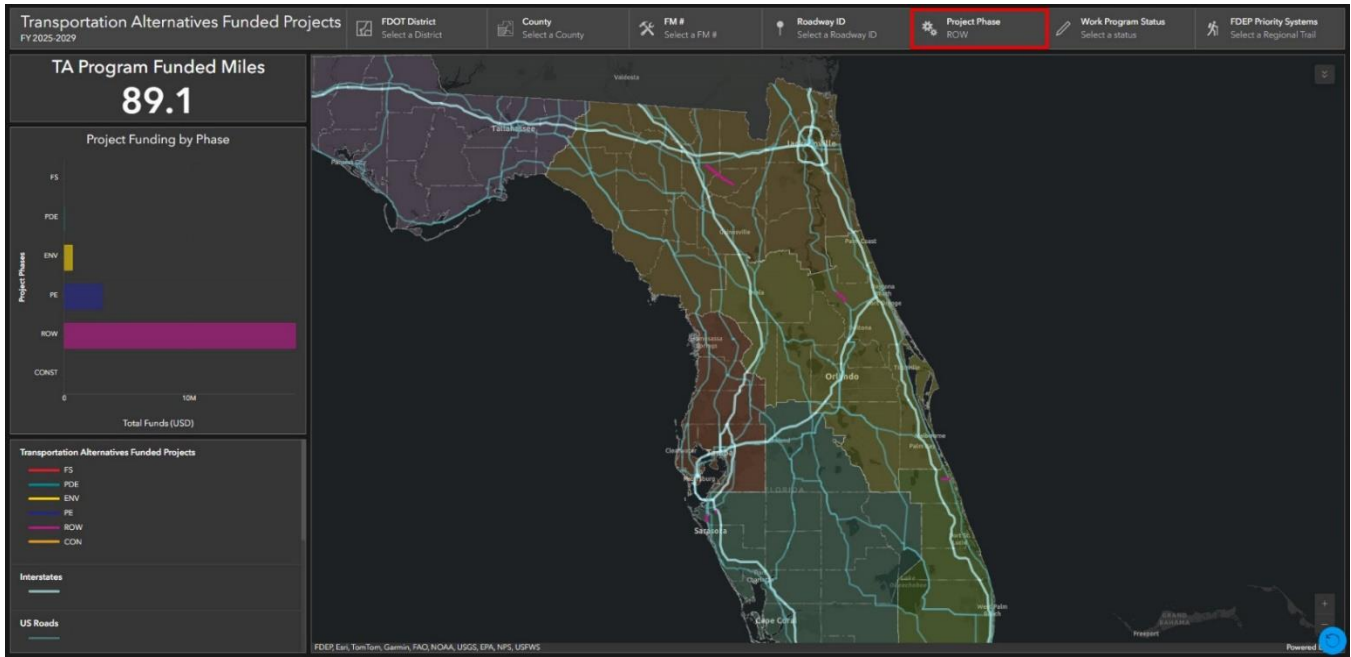


Figure 8 – Filter Project Phase.

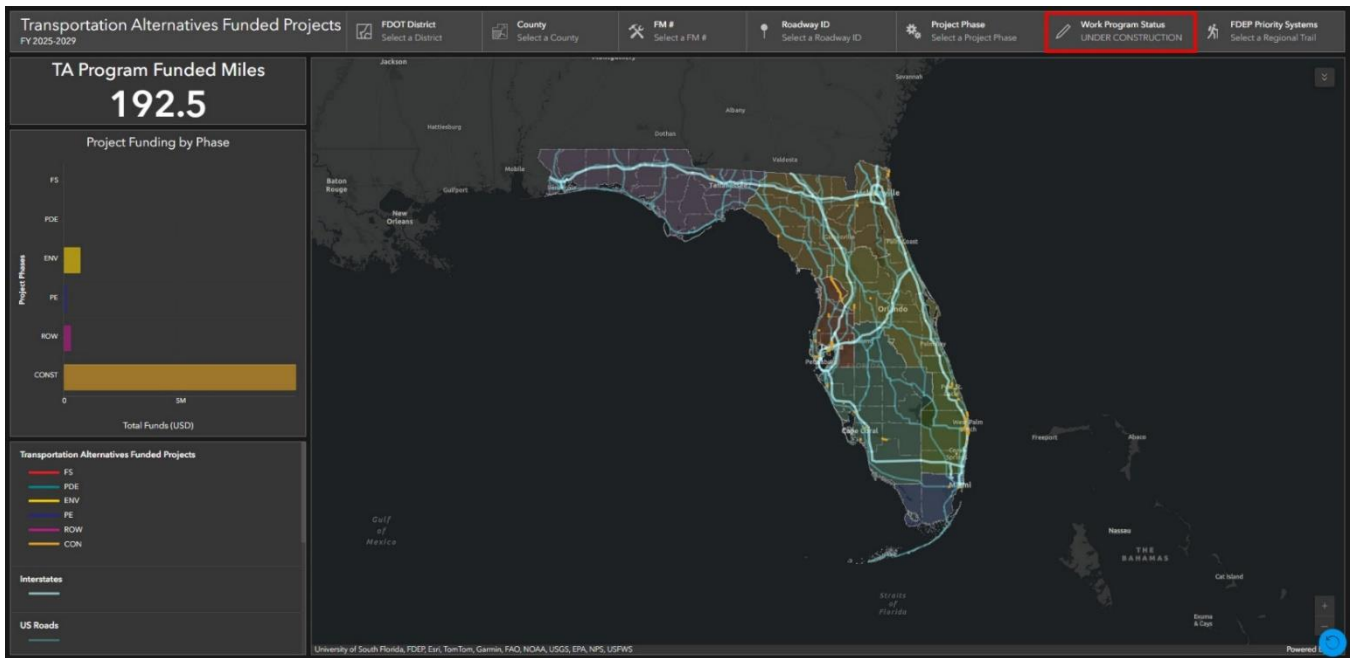


Figure 9 – Filter by Work Program Item Status.

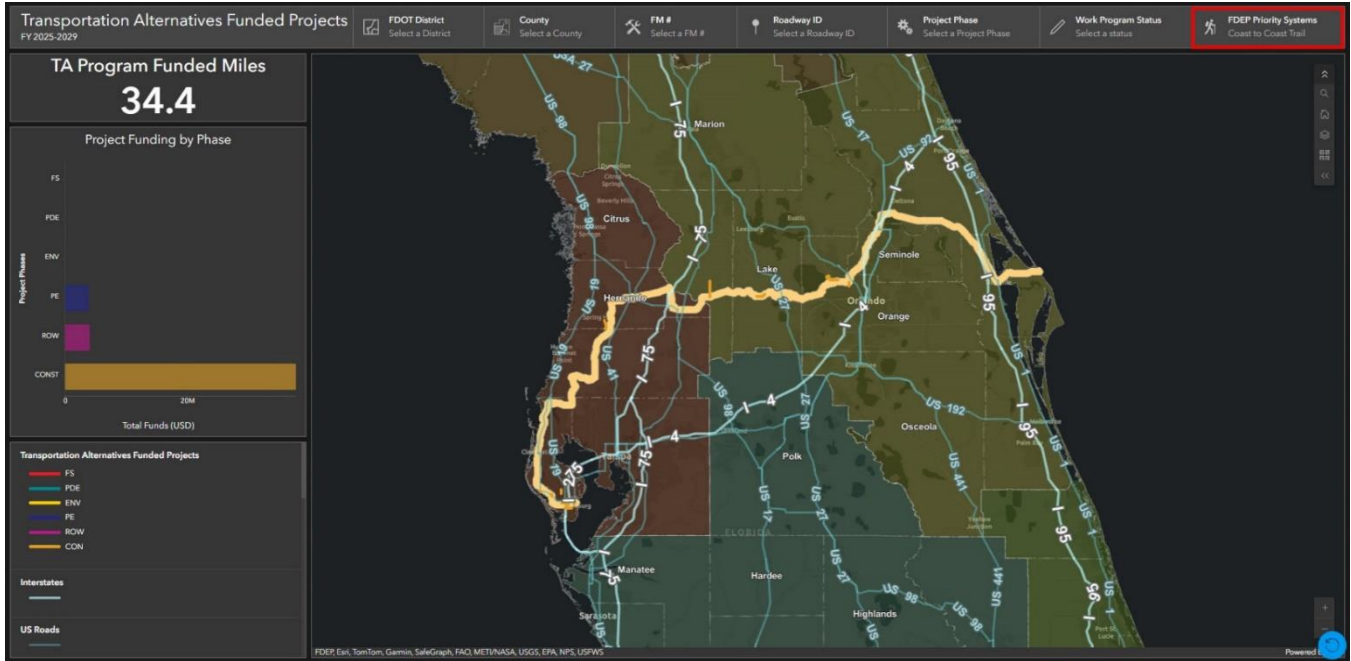


Figure 10 – Filter by FDEP Regional Trail Priority System. (Refer to Figures 17.1 & 17.2 to view FDEP Regional Trail layer on map frame).

Figures 11 – 12 provide examples of how to understand and change the statistics pane.

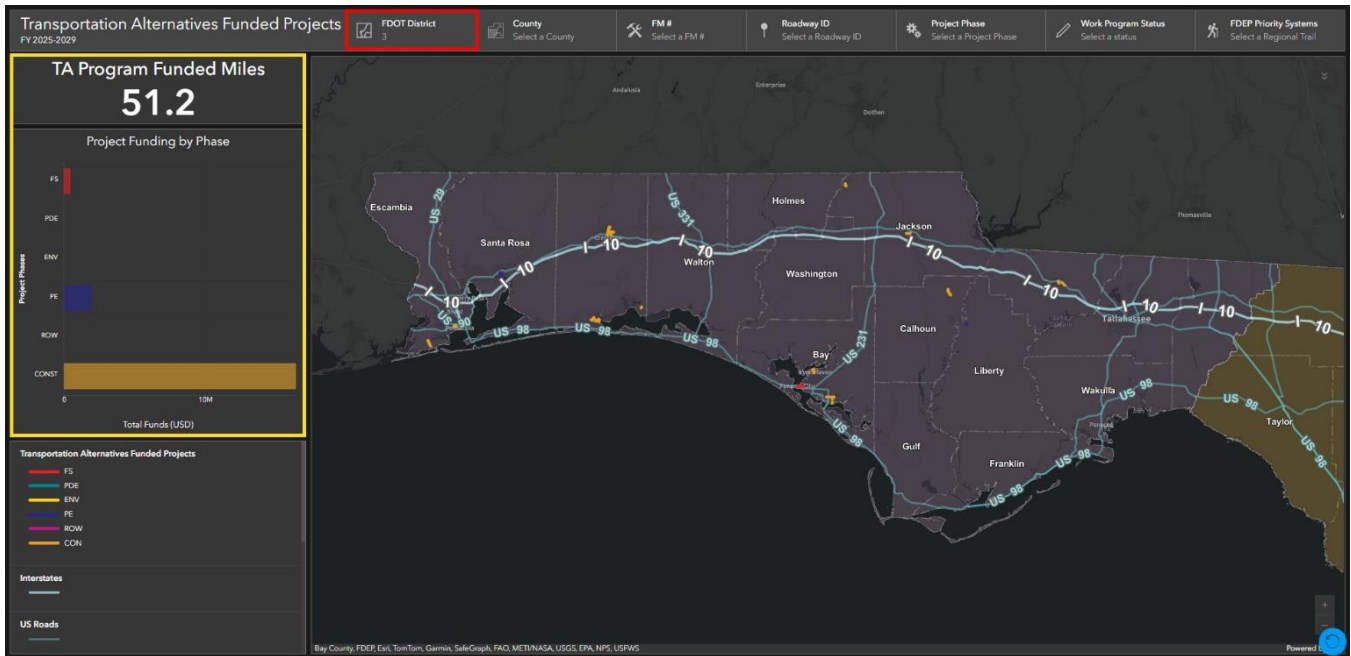


Figure 11 – Dynamic statistics after filter is applied.

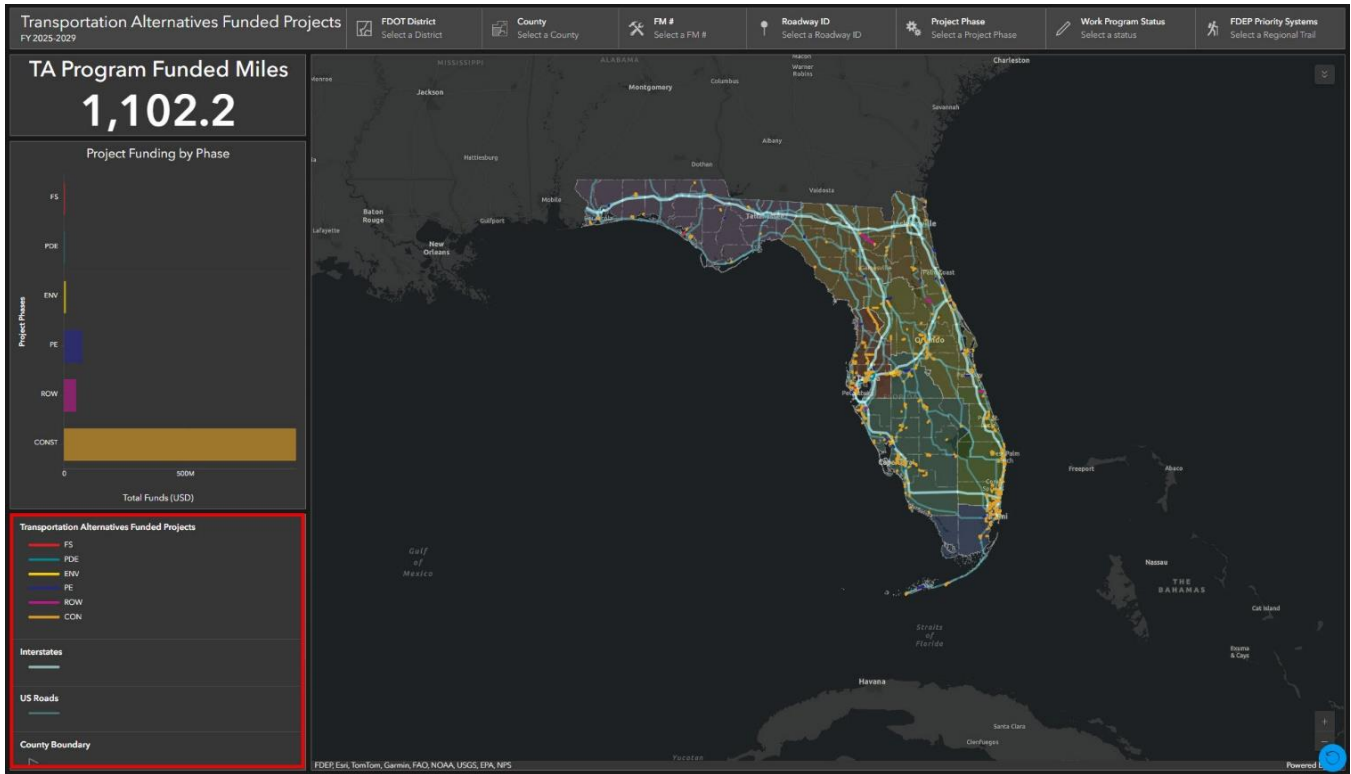


Figure 12.1 – Dynamic legend that changes based on the visible map layers.

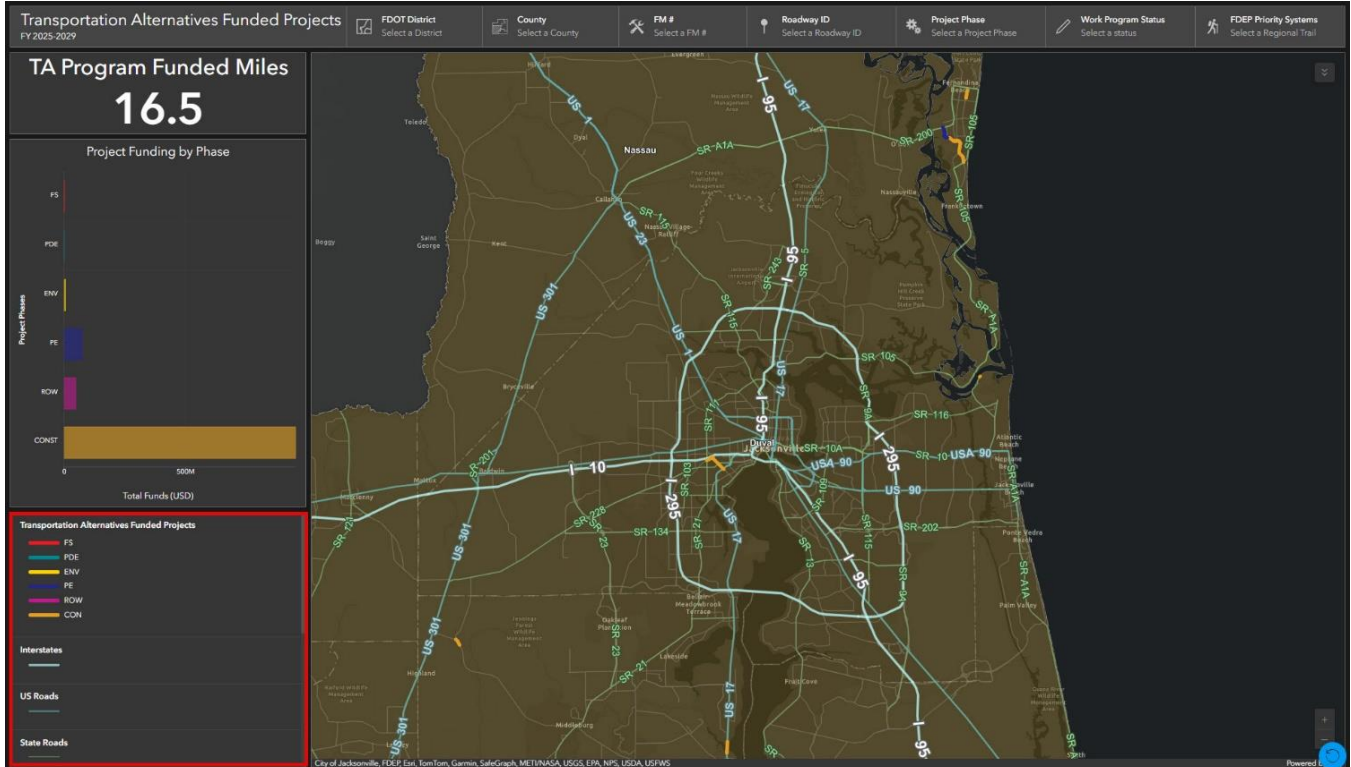


Figure 12.2 – Dynamic legend that changes based on the visible map layers.

Figures 13 - 19 provide examples of how the map frame can be configured to the user's preferences.



Figure 13 – Expand configurations to map frame.



Figure 14 – Expand labels for icons that configure the map frame.



Figure 15.1 – Search for a location using an address or a specific point of interest (ex: public library or park).

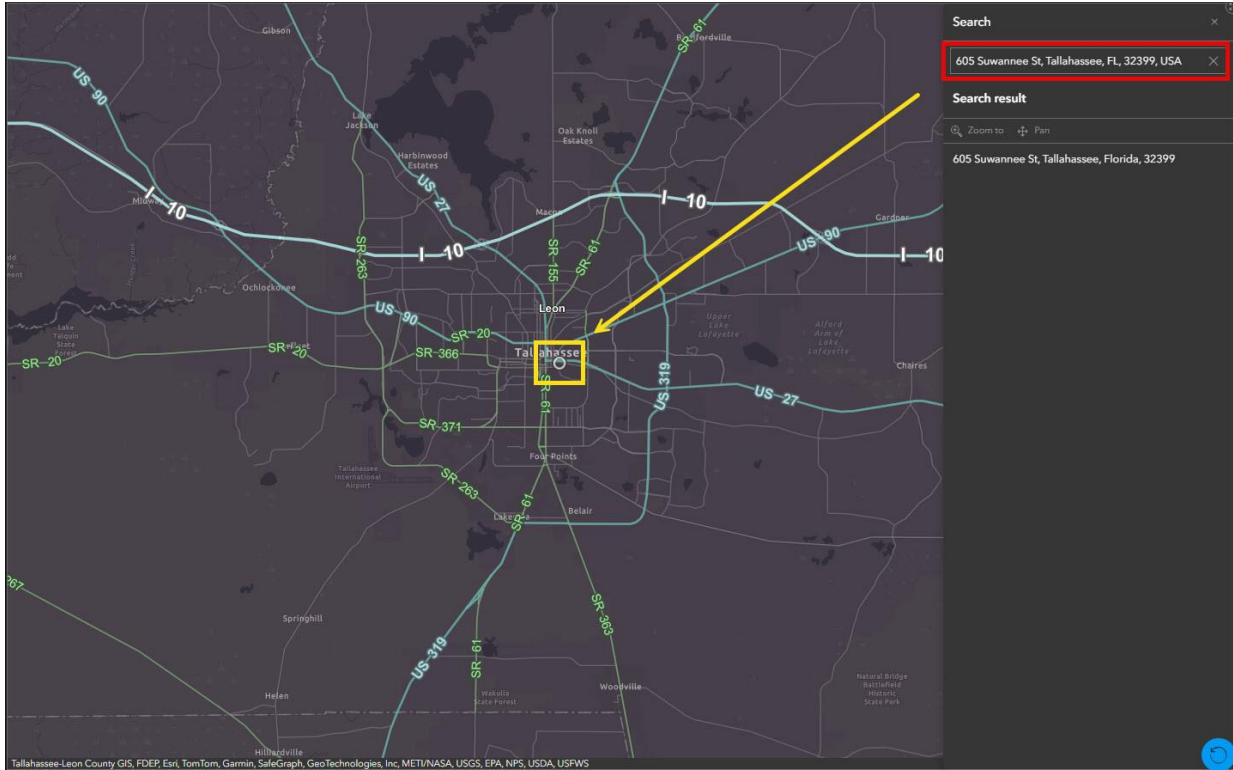


Figure 15.2 – Search results when typing an address.



Figure 16 – Revert map frame to default statewide extent.



Figure 17.1 – View visible layers on map.

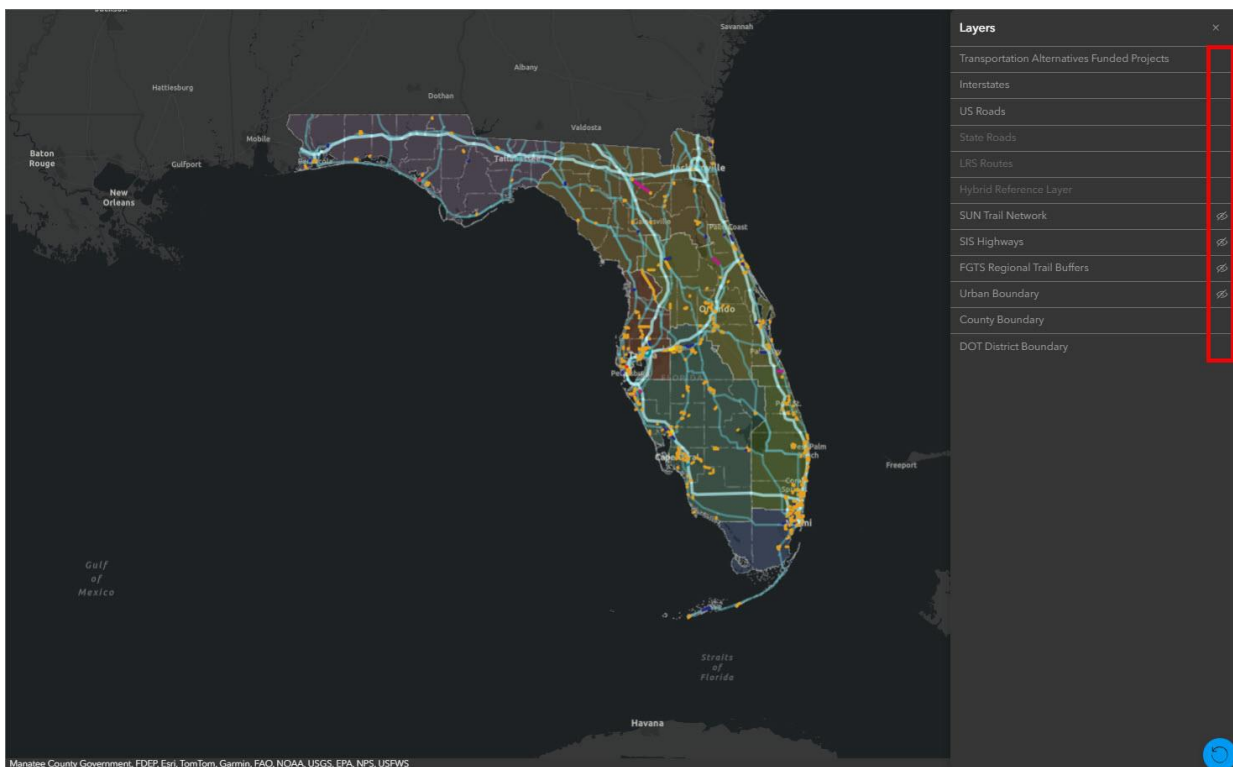


Figure 17.2 – Configure viewable layers by clicking the eye-symbol on/off.

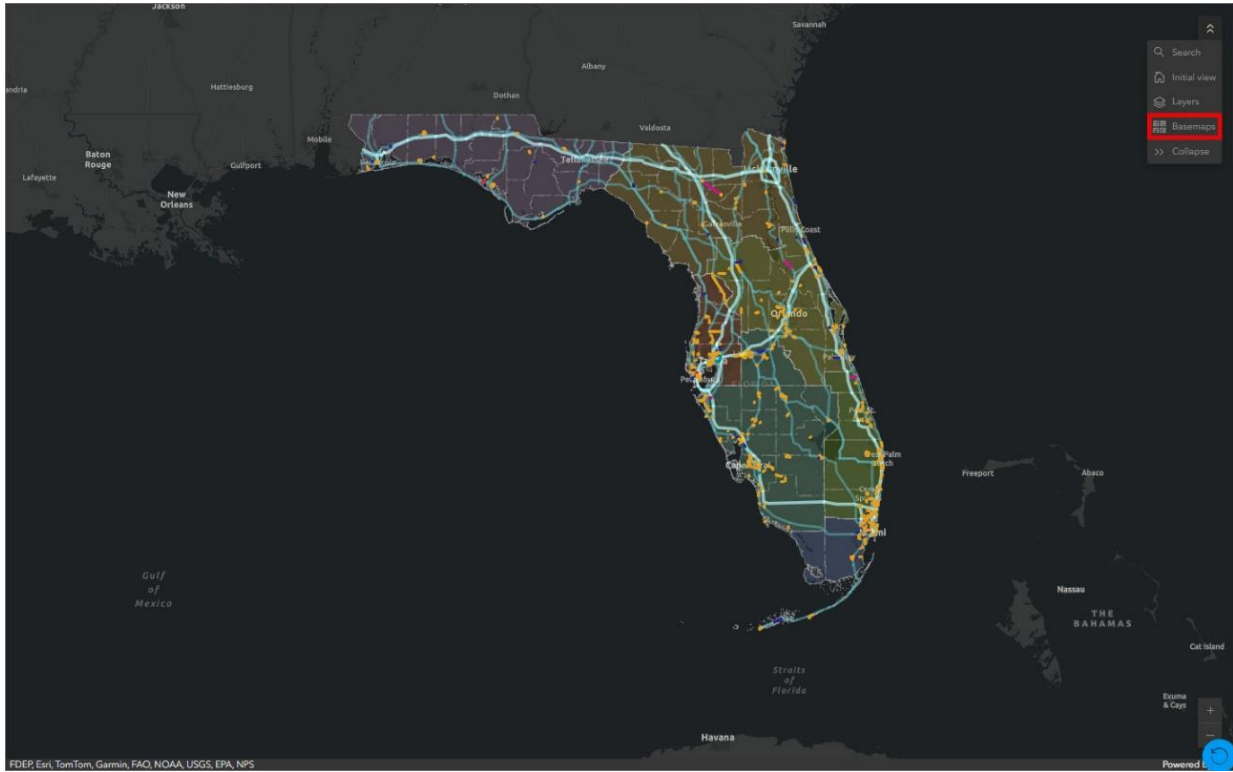


Figure 18.1 – Change the basemap.

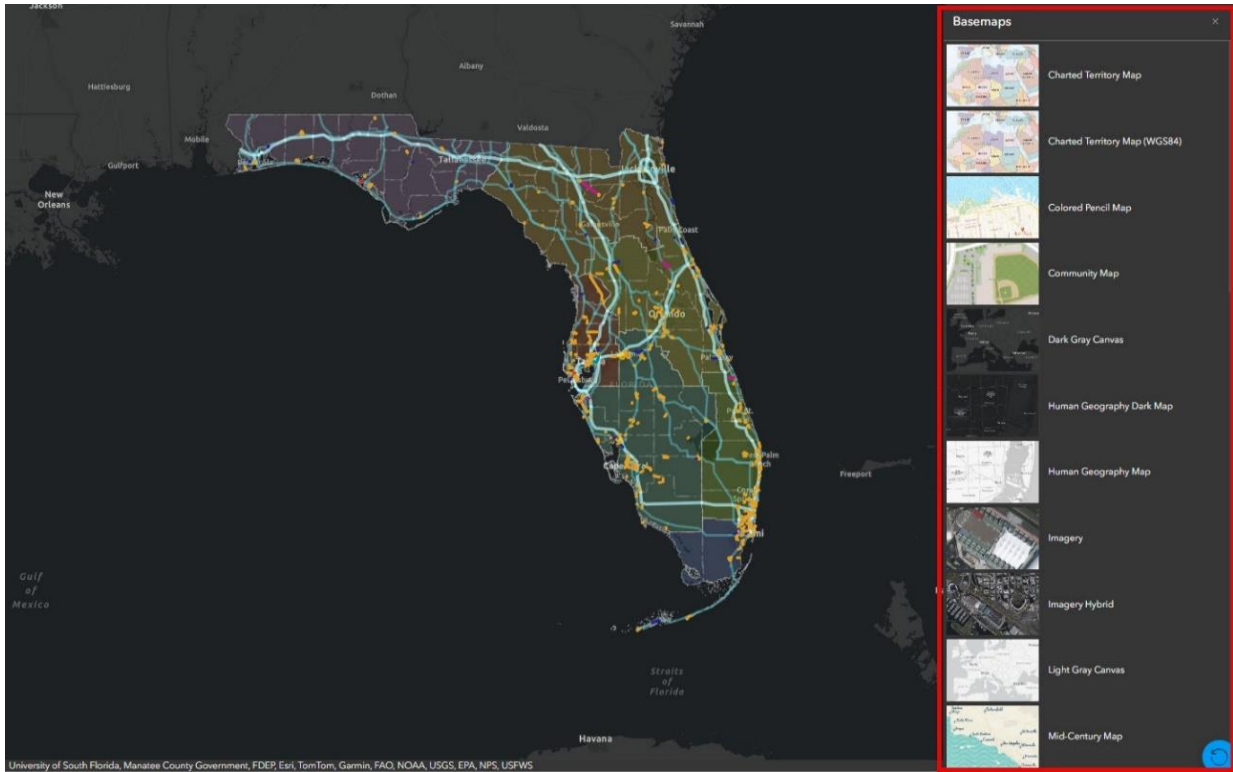


Figure 18.2 – Choose a different Esri basemap.

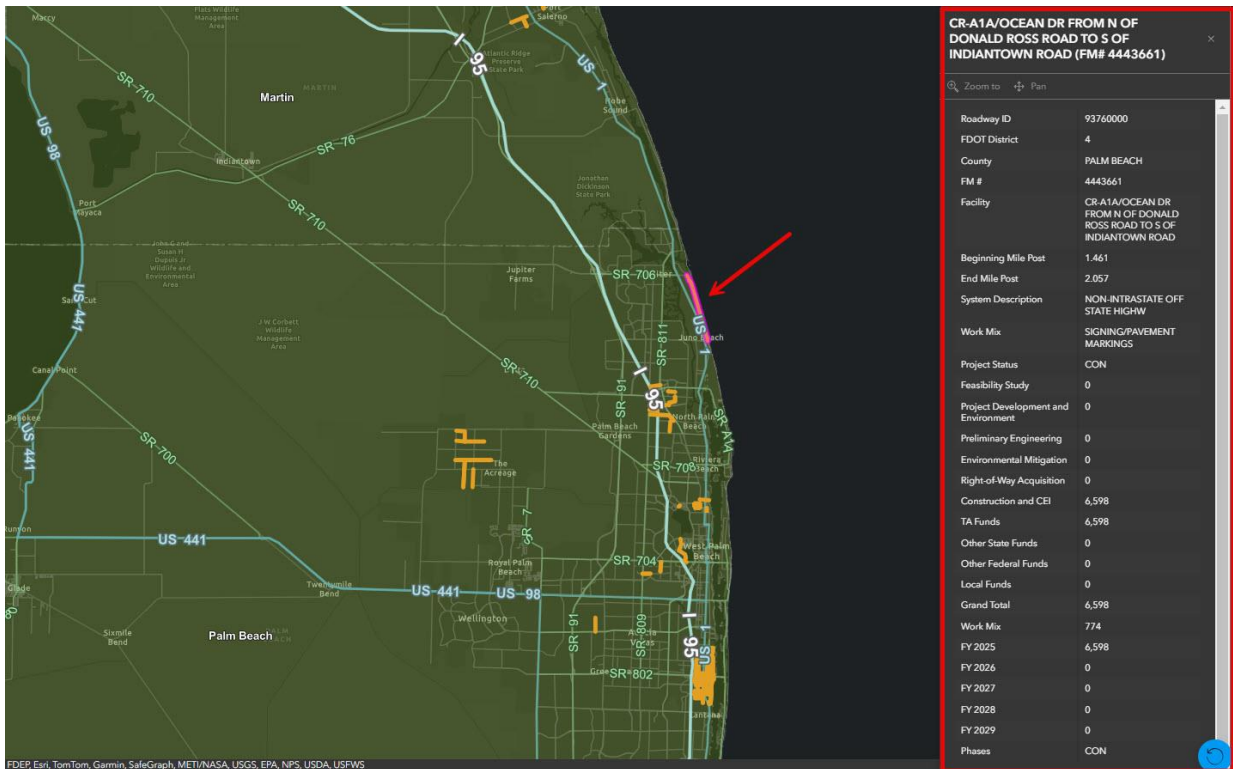


Figure 19 – Click on a TA Funded Project to view additional information.