

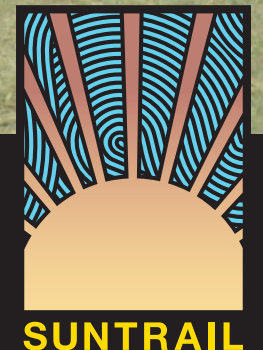
Shared-Use Nonmotorized (SUN) Trail

Adopted Work Program - **Detailed Map and Table Set**



Spring-to-Spring Trail - Phase 3A

Regional and Individual Trail Projects
Fiscal Years 2019/2020 - 2023/2024
As of July 1, 2019





Shared-Use Nonmotorized (SUN) Trail Program

Projects



Statewide

Adopted Work Program

TIER NAME	District	FM # ITEMSEG	COUNTY NAME	FACILITY	FISCAL YEAR					TOTAL COST BY PHASE					TOTAL SUN TRAIL FUNDS	OTHER STATE, FEDERAL FUNDS	TOTAL LOCAL FUNDS	GRAND TOTAL	
					2020	2021	2022	2023	2024	FS	PDE	PE	ENV	ROW					CON
IND	1	4436021	Charlotte	CAPE HAZE PIONEER TR FROM MYAKKA STATE FOREST TO US41(SR45)TAMIAMI TR	\$110,000	\$0	\$0	\$0	\$0	\$110,000	\$0	\$0	\$0	\$0	\$0	\$110,000	\$0	\$0	\$110,000
IND	1	4405801	Manatee	WILLOW-ELLENTON TRAIL FROM 21ST ST CT E TO I-75	\$511,111	\$0	\$0	\$0	\$0	\$0	\$0	\$0	\$0	\$0	\$511,111	\$511,111	\$0	\$0	\$511,111
IND	1	4403582	Polk	TENOROC TRL SEGMENT 1 FROM LAKE CRAGO DR TO SR 33 AT OLD COMBEE ROAD	\$0	\$0	\$0	\$0	\$1,259,579	\$0	\$0	\$0	\$0	\$0	\$1,259,579	\$1,259,579	\$0	\$0	\$1,259,579
IND	1	4406031	Polk	FORT FRASER TRAIL EX FROM SR 540(WINTER LAKE RD) TO SR 659(COMBEE RD)	\$0	\$2,000,000	\$0	\$0	\$0	\$0	\$0	\$0	\$0	\$0	\$2,000,000	\$2,000,000	\$0	\$0	\$2,000,000
IND	1	4404481	Sarasota	LEGACY TRAIL EXT PHASE I FROM CULVERHOUSE NATURE PARK TO ASHTON RD	\$1,057,000	\$0	\$0	\$7,500,000	\$0	\$0	\$0	\$1,057,000	\$0	\$0	\$7,500,000	\$8,557,000	\$0	\$0	\$8,557,000
IND	2	4399341	Alachua	SR24(ARCHER ROAD) FROM: SW 75TH TERRACE TO: SW 41ST BLVD	\$30,780	\$0	\$0	\$0	\$0	\$0	\$0	\$0	\$0	\$0	\$30,780	\$30,780	\$0	\$0	\$30,780
IND	2	4399342	Alachua	SR24(ARCHER ROAD) FROM: SW 75TH TERRACE TO: SW 41ST BLVD	\$1,633,896	\$0	\$0	\$0	\$0	\$0	\$0	\$0	\$0	\$0	\$1,633,896	\$1,633,896	\$0	\$0	\$1,633,896
IND	2	4331715	Bradford	CR18 FROM SR100 TO SE 36TH AVENUE	\$0	\$0	\$0	\$0	\$4,663,696	\$0	\$0	\$0	\$0	\$0	\$4,663,696	\$4,663,696	\$0	\$0	\$4,663,696
IND	2	4356191	Duval	SRA1A TIMUCUAN TRAIL FROM BIG TALBOT ISLAND TO LITTLE TALBOT ISLAND	\$2,243,504	\$0	\$0	\$0	\$0	\$0	\$0	\$0	\$0	\$1,000	\$2,242,504	\$1,652,476	\$591,028	\$0	\$2,243,504
IND	3	4399262	Wakulla	SR 30 (US 98) COASTAL HWY FROM CR 372 SURF RD TO S OF TOWER RD	\$6,333,472	\$0	\$0	\$0	\$0	\$0	\$0	\$0	\$0	\$0	\$6,333,472	\$6,333,472	\$0	\$0	\$6,333,472
IND	3	4399263	Wakulla	SR 30 (US 98) COASTAL HWY FROM S OF TOWER ROAD TO SR 61 (US 319)	\$983,000	\$0	\$8,974,514	\$0	\$0	\$0	\$0	\$0	\$0	\$983,000	\$8,974,514	\$8,974,514	\$983,000	\$0	\$9,957,514
IND	3	4405501	Wakulla	SR 30 (US 98) FROM W OF SR 363 WOODVILLE HWY TO LIGHTHOUSE RD	\$0	\$0	\$0	\$0	\$3,546,733	\$0	\$0	\$0	\$0	\$0	\$3,546,733	\$3,546,733	\$0	\$0	\$3,546,733
IND	4	4399991	St. Lucie	SAVANNAS PRESERVE STATE PARK GAP WALTON RD. TO SAVANNAS RECREATION AREA	\$75,000	\$0	\$0	\$0	\$0	\$0	\$0	\$75,000	\$0	\$0	\$75,000	\$0	\$0	\$75,000	
IND	4	4399992	St. Lucie	SAVANNAS PRESERVE STATE PARK GAP FROM WALTON RD TO LENNARD RD	\$0	\$6,045,350	\$0	\$0	\$0	\$0	\$0	\$0	\$0	\$0	\$6,045,350	\$6,045,350	\$0	\$0	\$6,045,350
IND	4	4399993	St. Lucie	SAVANNAS PRESERVE STATE PARK FR LENNARD RD TO SAVANNAS RECREATION AREA	\$0	\$0	\$75,000	\$2,797,498	\$0	\$0	\$0	\$75,000	\$0	\$0	\$2,797,498	\$2,872,498	\$0	\$0	\$2,872,498
IND	4	4400321	St. Lucie	FEC OVERPASS FROM SAVANNAS RECREATION AREA TO SOUTH OF SAVANNAH RD.	\$0	\$0	\$325,000	\$162,377	\$0	\$0	\$0	\$325,000	\$115,000	\$47,377	\$0	\$440,000	\$47,377	\$0	\$487,377
C2C	5	4361872	Brevard	SPACE COAST TRAIL FROM INDIAN RIVER AVE TO W OF MAX BREWER BRIDGE	\$797,456	\$0	\$0	\$0	\$0	\$0	\$0	\$0	\$0	\$0	\$797,456	\$797,456	\$0	\$0	\$797,456
C2C	5	4364331	Orange	ORANGE COUNTY GAP SEGMENT 2 FROM HIAWASSEE RD TO NORTH OF SR 414	\$1,671,000	\$530,000	\$138,060	\$6,302,364	\$0	\$0	\$0	\$111,000	\$0	\$2,133,060	\$6,397,364	\$1,744,060	\$6,600,390	\$296,974	\$8,641,424
C2C	5	4364342	Volusia	LAKE MONROE PARK ENTRANCE TO OLD DELAND RD	\$766,205	\$0	\$0	\$0	\$0	\$0	\$0	\$0	\$0	\$0	\$766,205	\$401,670	\$21,644	\$342,891	\$766,205
SJR2C	5	4398731	Flagler	SR A1A FROM S 26TH ST TO N 9TH ST	\$0	\$2,500,000	\$0	\$0	\$0	\$0	\$0	\$2,500,000	\$0	\$0	\$2,500,000	\$0	\$0	\$2,500,000	
SJR2C	5	4390396	Volusia	SPR TO SPR TRAIL PHASE 3C W HIGHBANKS RD TO DEBARY PLANTATATION BLVD	\$0	\$0	\$0	\$0	\$1,173,000	\$0	\$0	\$0	\$0	\$0	\$1,173,000	\$1,173,000	\$0	\$0	\$1,173,000
SJR2C	5	4398621	Volusia	US 1 FROM KENNEDY PARKWAY TO DALE AVE	\$0	\$2,349,000	\$0	\$6,891,281	\$0	\$0	\$0	\$2,349,000	\$0	\$0	\$6,891,281	\$8,238,944	\$1,001,337	\$0	\$9,240,281
SJR2C	5	4398641	Volusia	ST JOHNS RIVER TO SEA LOOP MYRTLE AVE FROM 10TH ST TO SR 44/LYTLA AVE	\$280,000	\$580,000	\$400,350	\$97,440	\$2,779,921	\$0	\$0	\$77,500	\$0	\$1,280,290	\$2,779,921	\$4,060,211	\$77,500	\$0	\$4,137,711
SJR2C	5	4398741	Volusia	ST JOHNS RIVER TO SEA LOOP FROM LAKE BERESFORD PARK TO GRAND AVE	\$0	\$0	\$0	\$9,373,730	\$0	\$0	\$0	\$0	\$0	\$0	\$9,373,730	\$8,156,025	\$1,217,705	\$0	\$9,373,730
SJR2C	5	4398742	Volusia	ST JOHNS RIVER TO SEA LOOP LAKE BERESFORD PARK TO OLD NEW YORK AVE	\$1,179,193	\$0	\$0	\$0	\$0	\$0	\$0	\$1,179,193	\$0	\$0	\$0	\$1,179,193	\$0	\$0	\$1,179,193
SJR2C	5	4398743	Volusia	ST JOHNS RIVER TO SEA LOOP FROM OLD NEW YORK AVE TO SR 44	\$428,798	\$0	\$0	\$0	\$0	\$0	\$0	\$428,798	\$0	\$0	\$428,798	\$0	\$0	\$428,798	
SJR2C	5	4398744	Volusia	ST JOHNS RIVER TO SEA LOOP FROM SR 44 TO EXISTING GRAND AVE TRAIL	\$535,997	\$0	\$0	\$0	\$0	\$0	\$0	\$535,997	\$0	\$0	\$535,997	\$0	\$0	\$535,997	
SJR2C	5	4398751	Volusia	ST JOHNS RIVER TO SEA LOOP FROM GRAND AVE/BAXTER ST TO SR 15 (US 17)	\$1,500,000	\$0	\$0	\$0	\$0	\$0	\$0	\$0	\$0	\$1,500,000	\$1,500,000	\$0	\$0	\$1,500,000	
SJR2C	5	4398761	Volusia	SR 15 (US 17) FROM SR 40 TO PUTNAM COUNTY LINE	\$0	\$2,835,000	\$0	\$0	\$0	\$0	\$0	\$2,835,000	\$0	\$0	\$0	\$2,835,000	\$0	\$0	\$2,835,000
IND	6	4166604	Miami-Dade	MIAMI DADE COUNTY - LUDLAM TRAIL FROM NW 7 STREET TO SW 40 STREET	\$0	\$8,000,000	\$0	\$0	\$0	\$0	\$0	\$0	\$0	\$0	\$8,000,000	\$8,000,000	\$0	\$0	\$8,000,000
IND	6	4398981	Miami-Dade	BISCAYNE TRAIL SEGMENT D PHASE II FROM SW 117 AVE TO SW 137 AVE	\$0	\$0	\$0	\$0	\$1,519,597	\$0	\$0	\$0	\$0	\$0	\$1,519,597	\$1,254,731	\$0	\$264,866	\$1,519,597
IND	6	4436131	Miami-Dade	BISCAYNE EVERGLADES GREENWAY: MOWRY DRIVE FROM NE 12TH TO SW 192ND AVE	\$65,000	\$0	\$0	\$0	\$0	\$0	\$65,000	\$0	\$0	\$0	\$65,000	\$0	\$0	\$65,000	
C2C	7	4357201	Hernando	GOOD NEIGHBOR TRL CONNECTOR FM W OF SUNCOAST PKWY TO SR 50/CORTEZ BLVD	\$5,277,528	\$0	\$0	\$0	\$0	\$0	\$0	\$0	\$37,058	\$23,015	\$5,217,455	\$5,217,455	\$60,073	\$0	\$5,277,528
C2C	7	4372642	Hernando	GOOD NEIGHBOR TRAIL GAP FR W OF SR 50/CORTEZ BLVD TO GOOD NEIGHBOR TR	\$3,200,800	\$0	\$15,409,369	\$0	\$0	\$0	\$0	\$0	\$0	\$3,200,800	\$15,409,369	\$17,577,188	\$1,032,981	\$0	\$18,610,169
IND	7	4400933	Pinellas	PINELLAS TRAIL LOOP - PH 4 FROM 126TH AVE N TO ULMERTON RD	\$0	\$0	\$293,627	\$0	\$1,468,133	\$0	\$0	\$293,627	\$0	\$0	\$1,468,133	\$1,761,760	\$0	\$0	\$1,761,760
ANNUAL TOTALS					\$28,679,740	\$24,839,350	\$25,615,920	\$33,124,690	\$16,410,659	\$110,000	\$65,000	\$11,692,115	\$412,058	\$7,668,542	\$108,832,644	\$116,132,593	\$11,633,035	\$904,731	\$128,670,359

LEGEND

Adopted Work Program

FY 2019/2020 - 2023/2024
As of 7/1/2019

FS= Feasibility Study; Phase Group - 1 and Phase Type - all but 1 and 9;
PDE= Project Development Environmental; Phase Group - 2 and Phase Type - all but 1 and 9;
PE= Preliminary Engineering; Phase Group - 3; Phase Type - all but 1 and 9;
ENV= Environmental/Mitigation; Phase Group - C; Phase Type - all but 1 and 9;
ROW= Right-of-Way; Phase Group - 4 and all Phase Type - all but 1 and 9;
CON + CEI= Construction and Support (may include Grants); Phase Group - 5, 6 and Phase Type - all but 1 and 9.

NOTES

- (1) Tiers: C2C - Coast to Coast; SJR2C - St. Johns River - to - Sea Loop; IND - Individual;
- (2) Project costs are subject to change;
- (3) In the IND category, an allocation to one project phase is not a guarantee of commitment to allocations for future phases;
- (4) SUN Trail allocations have "TLWR" as the fund code;
- (5) "Other State, Federal funds" are non-TLWR funds administered by FDOT;
- (6) "Local funds" are programmed when a portion of the project is being provided by a non-FDOT source; may include funds from a city, county, another state agency, etc.

Shared-Use Nonmotorized (SUN) Trail Program

Statewide

State of Florida Department of Transportation
Systems Implementation Office

Adopted Work Program

(FY 2019/2020 through 2023/2024)
as of July 1, 2019

LEGEND

- Project Phase**
- Feasibility Study
 - Project Development & Environment
 - Preliminary Engineering + ENV
 - Right of Way
 - Construction + CEI
 - Two-mile Buffer of Coast To Coast
 - Two-mile Buffer of St. Johns River - to - Sea Loop

Item #	4398711	Tag for Regional Coast to Coast (C2C) Project
Description	N BEACH ST FROM 350 FEET SOUTH OF 2ND ST TO 2ND ST	
Phase, Dollar Amount and Fiscal Year	PE \$ 2,767,181 CON \$ 103,320 18 T	
Item #	4398711	Tag for Regional St. Johns River - to - Sea Loop Project
Description	N BEACH ST FROM 350 FEET SOUTH OF 2ND ST TO 2ND ST	
Phase, Dollar Amount and Fiscal Year	PE \$ 2,767,181 CON \$ 103,320 18 T	
Item #	4398711	Tag for Individual Project
Description	N BEACH ST FROM 350 FEET SOUTH OF 2ND ST TO 2ND ST	
Phase, Dollar Amount and Fiscal Year	PE \$ 2,767,181 CON \$ 103,320 18 T	

T = TLWR Funds
O = Other Funds
L = Local Funds

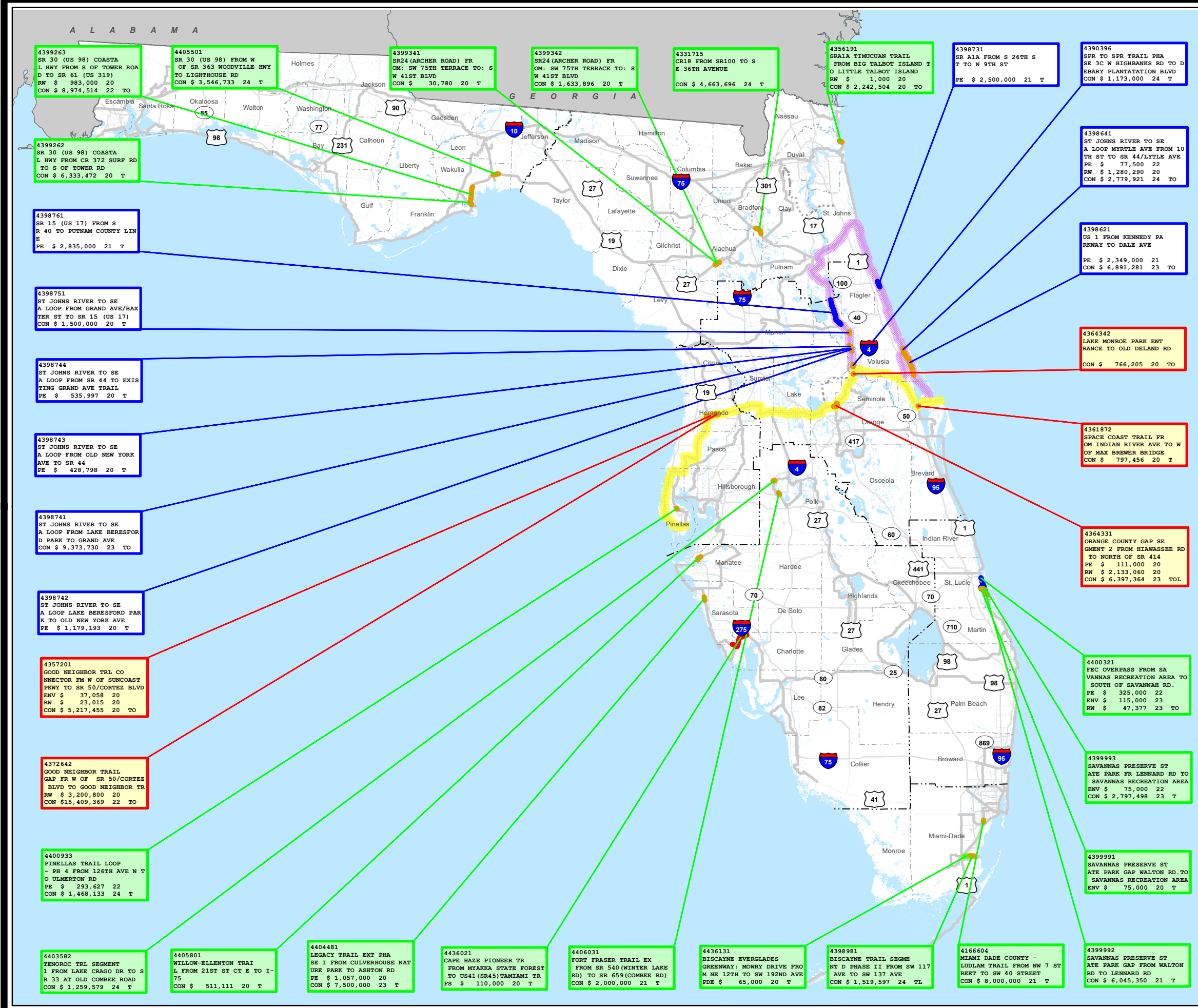
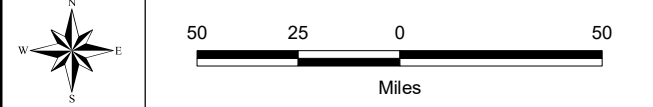
NOTES

- In the individual trail category, an allocation to one project phase is not a guarantee of commitment to allocations for future phases.
- Project costs are subject to change.
- Projects are color coded by the last funded phase.
- Project phases with funds committed under the past Adopted Work Program are not depicted.

Source:
Florida Department of Transportation
- Systems Implementation Office

Existing Conditions

- SUN Trail Network
- Highways
- Water
- Railroads
- Planned SIS roads
- County Boundaries



4399263
SR 30 (US 98) COASTA
L HWY FROM S OF TOWER ROA
D TO SR 61 (US 319)
RW \$ 983,000 20
CON \$ 8,974,514 22 TO

4405501
SR 30 (US 98) FROM W
OF SR 363 WOODVILLE HWY
TO LIGHTHOUSE RD
CON \$ 3,546,733 24 T

4399341
SR24 (ARCHER ROAD) FR
OM: SW 75TH TERRACE TO: S
W 41ST BLVD
CON \$ 30,780 20 T

4399342
SR24 (ARCHER ROAD) FR
OM: SW 75TH TERRACE TO: S
W 41ST BLVD
CON \$ 1,633,896 20 T

4331715
CR18 FROM SR100 TO S
E 36TH AVENUE
CON \$ 4,663,696 24 T

4356191
SR1A TIMUCUAN TRAIL
FROM BIG TALBOT ISLAND T
O LITTLE TALBOT ISLAND
RW \$ 1,000 20
CON \$ 2,242,504 20 TO

4398731
SR 11A FROM S 26TH S
T TO N 9TH ST
PE \$ 2,500,000 21 T

4390396
SPR TO SPR TRAIL PHA
SE 3C W HIGHBANKS RD TO D
EBARY PLANTATION BLVD
CON \$ 1,173,000 24 T

4399262
SR 30 (US 98) COASTA
L HWY FROM CR 372 SURF RD
TO S OF TOWER RD
CON \$ 6,333,472 20 T

4398761
SR 15 (US 17) FROM S
R 40 TO PUTNAM COUNTY LIN
E
PE \$ 2,835,000 21 T

4398751
ST JOHNS RIVER TO SE
A LOOP FROM GRAND AVE/BAX
TER ST TO SR 15 (US 17)
CON \$ 1,500,000 20 T

4398744
ST JOHNS RIVER TO SE
A LOOP FROM SR 44 TO EXIS
TING GRAND AVE TRAIL
PE \$ 535,997 20 T

4398743
ST JOHNS RIVER TO SE
A LOOP FROM OLD NEW YORK
AVE TO SR 44
PE \$ 428,798 20 T

4398741
ST JOHNS RIVER TO SE
A LOOP FROM LAKE BERESFOR
D PARK TO GRAND AVE
CON \$ 9,373,730 23 TO

4398742
ST JOHNS RIVER TO SE
A LOOP LAKE BERESFORD PAR
K TO OLD NEW YORK AVE
PE \$ 1,179,193 20 T

4357201
GOOD NEIGHBOR TRL CO
NNECTOR FM W OF SUNCOAST
PKWY TO SR 50/CORTEZ BLVD
ENV \$ 37,058 20
RW \$ 23,015 20
CON \$ 5,217,455 20 TO

4372642
GOOD NEIGHBOR TRAIL
GAP FR W OF SR 50/CORTEZ
BLVD TO GOOD NEIGHBOR TR
RW \$ 3,200,800 20
CON \$15,409,369 22 TO

4400933
PINELLAS TRAIL LOOP
- PH 4 FROM 126TH AVE N T
O ULMERTON RD
PE \$ 293,627 22
CON \$ 1,468,133 24 T

4403582
TENOROC TRL SEGMENT
1 FROM LAKE CRAGO DR TO S
R 33 AT OLD COMBEE ROAD
CON \$ 1,259,579 24 T

4405801
WILLOW-ELLENTON TRAI
L FROM 21ST ST CT E TO I-
75
CON \$ 511,111 20 T

4404481
LEGACY TRAIL EXT PHA
SE I FROM CULVERHOUSE NAT
URE PARK TO ASHTON RD
PE \$ 1,057,000 20
CON \$ 7,500,000 23 T

4436021
CAPE HAZE PIONEER TR
L FROM MYAKKA STATE FOREST
TO US41 (SR45) TAMAMI TR
FR \$ 110,000 20 T

4406031
FORT FRASER TRAIL EX
FROM SR 540 (WINTER LAKE
RD) TO SR 659 (COMBEE RD)
CON \$ 2,000,000 21 T

4436131
BISCAYNE EVERGLADES
GREENWAY: MOWRY DRIVE FRO
M NE 12TH TO SW 192ND AVE
PDE \$ 65,000 20 T

4398981
BISCAYNE TRAIL SEGME
NT D PHASE II FROM SW 117
AVE TO SW 137 AVE
CON \$ 1,519,597 24 TL

4166604
MIAMI DADE COUNTY -
LUDLAM TRAIL FROM NW 7 ST
REET TO SW 40 STREET
CON \$ 8,000,000 21 T

4399992
SAVANNAS PRESERVE ST
ATE PARK GAP FROM WALTON
RD TO LENNARD RD
CON \$ 6,045,350 21 T

4364342
LAKE MONROE PARK ENT
RANCE TO OLD DELAND RD
CON \$ 766,205 20 TO

4361872
SPACE COAST TRAIL FR
OM INDIAN RIVER AVE TO W
OF MAX BREWER BRIDGE
CON \$ 797,456 20 T

4364331
ORANGE COUNTY GAP SE
GMENT 2 FROM HIAWASSEE RD
TO NORTH OF SR 414
PE \$ 111,000 20
RW \$ 2,133,060 20
CON \$ 6,397,364 23 TOL

4400321
FEC OVERPASS FROM SA
VANNAS RECREATION AREA TO
SOUTH OF SAVANNAH RD.
PE \$ 325,000 22
ENV \$ 115,000 23
RW \$ 47,377 23 TO

4399993
SAVANNAS PRESERVE ST
ATE PARK FR LENNARD RD TO
SAVANNAS RECREATION AREA
ENV \$ 75,000 22
CON \$ 2,797,498 23 T

4399991
SAVANNAS PRESERVE ST
ATE PARK GAP WALTON RD TO
SAVANNAS RECREATION AREA
ENV \$ 75,000 20 T



Shared-Use Nonmotorized (SUN) Trail Program

Projects



District 1

Adopted Work Program

TIER NAME	FM # ITEMSEG	COUNTY NAME	FACILITY	FISCAL YEAR					TOTAL COST BY PHASE					TOTAL SUN TRAIL FUNDS	OTHER STATE, FEDERAL FUNDS	TOTAL LOCAL FUNDS	GRAND TOTAL	
				2020	2021	2022	2023	2024	FS	PDE	PE	ENV	ROW					CON
IND	4436021	Charlotte	CAPE HAZE PIONEER TR FROM MYAKKA STATE FOREST TO US41(SR45)TAMIAMI TR	\$110,000	\$0	\$0	\$0	\$0	\$110,000	\$0	\$0	\$0	\$0	\$0	\$110,000	\$0	\$0	\$110,000
IND	4405801	Manatee	WILLOW-ELLENTON TRAIL FROM 21ST ST CT E TO I-75	\$511,111	\$0	\$0	\$0	\$0	\$0	\$0	\$0	\$0	\$0	\$511,111	\$511,111	\$0	\$0	\$511,111
IND	4403582	Polk	TENOROC TRL SEGMENT 1 FROM LAKE CRAGO DR TO SR 33 AT OLD COMBEE ROAD	\$0	\$0	\$0	\$0	\$1,259,579	\$0	\$0	\$0	\$0	\$0	\$1,259,579	\$1,259,579	\$0	\$0	\$1,259,579
IND	4406031	Polk	FORT FRASER TRAIL EX FROM SR 540(WINTER LAKE RD) TO SR 659(COMBEE RD)	\$0	\$2,000,000	\$0	\$0	\$0	\$0	\$0	\$0	\$0	\$0	\$2,000,000	\$2,000,000	\$0	\$0	\$2,000,000
IND	4404481	Sarasota	LEGACY TRAIL EXT PHASE I FROM CULVERHOUSE NATURE PARK TO ASHTON RD	\$1,057,000	\$0	\$0	\$7,500,000	\$0	\$0	\$0	\$1,057,000	\$0	\$0	\$7,500,000	\$8,557,000	\$0	\$0	\$8,557,000
ANNUAL TOTALS				\$1,678,111	\$2,000,000	\$0	\$7,500,000	\$1,259,579	\$110,000	\$0	\$1,057,000	\$0	\$0	\$11,270,690	\$12,437,690	\$0	\$0	\$12,437,690

Legend

Adopted Work Program

**FY 2019/2020 - 2023/2024
As of 7/1/2019**

FS= Feasibility Study; Phase Group - 1 and Phase Type - all but 1 and 9;
PDE= Project Development Environmental; Phase Group - 2 and Phase Type - all but 1 and 9;
PE= Preliminary Engineering; Phase Group - 3; Phase Type - all but 1 and 9;
ENV= Environmental/Mitigation; Phase Group - C; Phase Type - all but 1 and 9;
ROW= Right-of-Way; Phase Group - 4 and all Phase Type - all but 1 and 9;
CON + CEI= Construction and Support (may include Grants); Phase Group - 5, 6 and Phase Type - all but 1 and 9.

Notes

- (1) Tiers: C2C - Coast to Coast; SJR2C - St. Johns River - to - Sea Loop; IND - Individual;
- (2) Project costs are subject to change;
- (3) In the IND category, an allocation to one project phase is not a guarantee of commitment to allocations for future phases;
- (4) SUN Trail allocations have "TLWR" as the fund code;
- (5) "Other State, Federal funds" are non-TLWR funds administered by FDOT;
- (6) "Local funds" are programmed when a portion of the project is being provided by a non-FDOT source; may include funds from a city, county, another state agency, etc.

Shared-Use Nonmotorized (SUN) Trail Program

District 1

State of Florida Department of Transportation
Systems Implementation Office



Adopted Work Program

(FY 2019/2020 through 2023/2024)
as of July 1, 2019

LEGEND

Project Phase

- Feasibility Study
- Project Development & Environment
- Preliminary Engineering + ENV
- Right of Way
- Construction + CEI

-  Two-mile Buffer of Coast To Coast
-  Two-mile Buffer of St. Johns River - to - Sea Loop

Item #	4398711	Tag for Regional Coast to Coast (C2C) Project
Description	N BEACH ST FROM 350 FEET SOUTH OF 2ND ST TO 2ND ST	
Phase, Dollar Amount and Fiscal Year	PE \$ 2,767.18 CON \$ 103,320.18 T	
Item #	4398711	Tag for Regional St. Johns River - to - Sea Loop Project
Description	N BEACH ST FROM 350 FEET SOUTH OF 2ND ST TO 2ND ST	
Phase, Dollar Amount and Fiscal Year	PE \$ 2,767.18 CON \$ 103,320.18 T	
Item #	4398711	Tag for Individual Project
Description	N BEACH ST FROM 350 FEET SOUTH OF 2ND ST TO 2ND ST	
Phase, Dollar Amount and Fiscal Year	PE \$ 2,767.18 CON \$ 103,320.18 T	

T = TLWR Funds
O = Other Funds
L = Local Funds

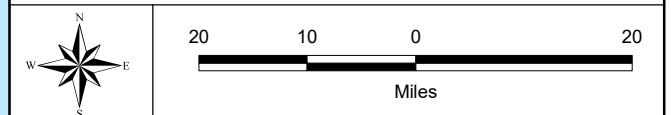
NOTES

- (1) In the individual trail category, an allocation to one project phase is not a guarantee of commitment to allocations for future phases.
- (2) Project costs are subject to change.
- (3) Projects are color coded by the last funded phase.
- (4) Project phases with funds committed under the past Adopted Work Program are not depicted.

Source:
Florida Department of Transportation
- Systems Implementation Office

Existing Conditions

-  SUN Trail Network
-  Highways
-  Planned SIS roads
-  Water
-  Railroads
-  County Boundaries



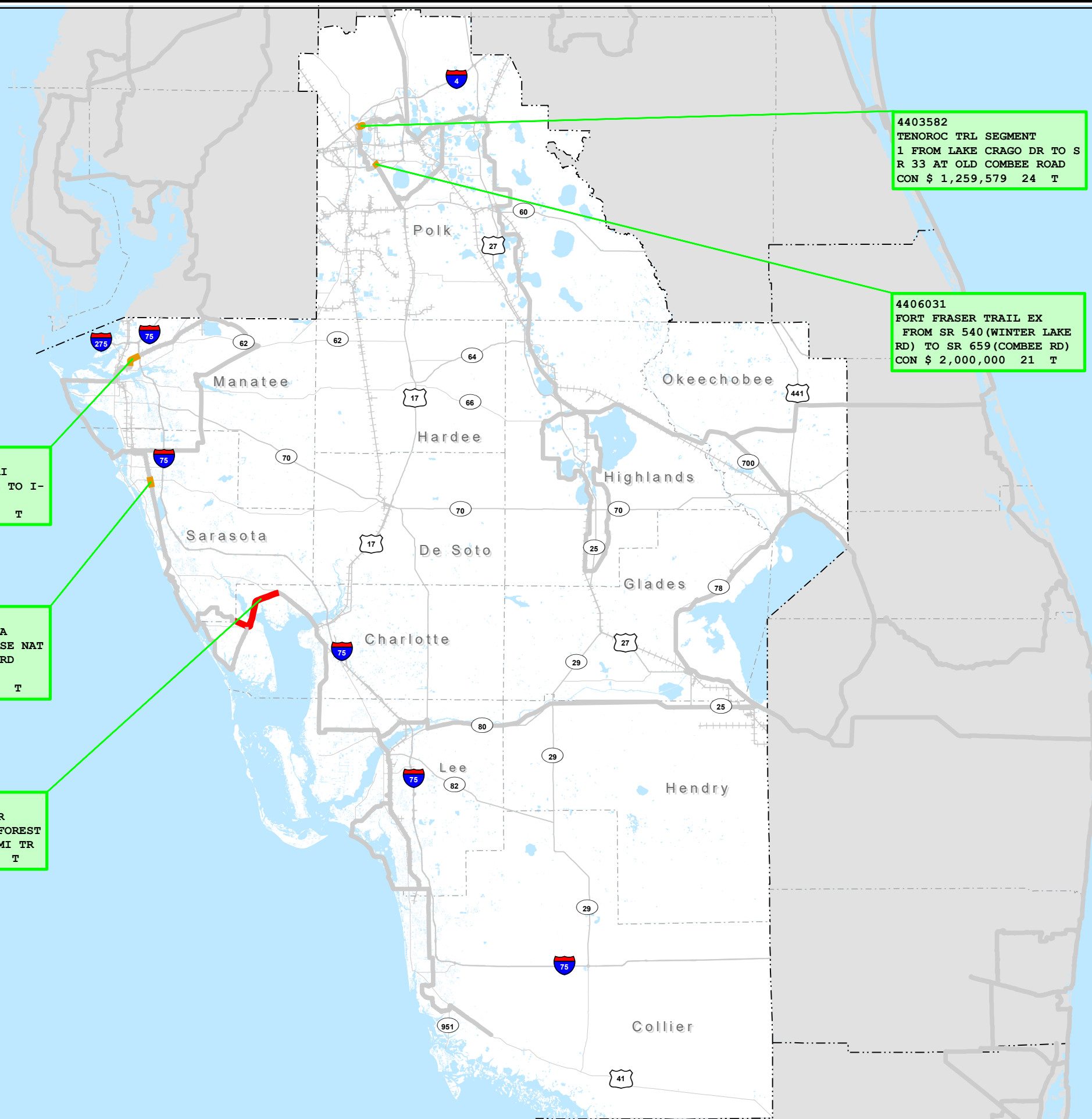
4405801
WILLOW-ELLENTON TRAIL
FROM 21ST ST CT E TO I-75
CON \$ 511,111 20 T

4404481
LEGACY TRAIL EXT PHASE I
FROM CULVERHOUSE NATURE PARK TO ASHTON RD
PE \$ 1,057,000 20
CON \$ 7,500,000 23 T

4436021
CAPE HAZE PIONEER TRAIL
FROM MYAKKA STATE FOREST TO US41 (SR45) TAMiami TR
FS \$ 110,000 20 T

4403582
TENOROC TRAIL SEGMENT 1
FROM LAKE CRAGO DR TO SR 33 AT OLD COMBEE RD
CON \$ 1,259,579 24 T

4406031
FORT FRASER TRAIL EX
FROM SR 540 (WINTER LAKE RD) TO SR 659 (COMBEE RD)
CON \$ 2,000,000 21 T





Shared-Use Nonmotorized (SUN) Trail Program

Projects



District 2

Adopted Work Program

TIER NAME	FM # ITEMSEG	COUNTY NAME	FACILITY	FISCAL YEAR					TOTAL COST BY PHASE					TOTAL SUN TRAIL FUNDS	OTHER STATE, FEDERAL FUNDS	TOTAL LOCAL FUNDS	GRAND TOTAL		
				2020	2021	2022	2023	2024	FS	PDE	PE	ENV	ROW					CON	
IND	4399341	Alachua	SR24(ARCHER ROAD) FROM: SW 75TH TERRACE TO: SW 41ST BLVD	\$30,780	\$0	\$0	\$0	\$0	\$0	\$0	\$0	\$0	\$0	\$0	\$30,780	\$30,780	\$0	\$0	\$30,780
IND	4399342	Alachua	SR24(ARCHER ROAD) FROM: SW 75TH TERRACE TO: SW 41ST BLVD	\$1,633,896	\$0	\$0	\$0	\$0	\$0	\$0	\$0	\$0	\$0	\$0	\$1,633,896	\$1,633,896	\$0	\$0	\$1,633,896
IND	4331715	Bradford	CR18 FROM SR100 TO SE 36TH AVENUE	\$0	\$0	\$0	\$0	\$4,663,696	\$0	\$0	\$0	\$0	\$0	\$0	\$4,663,696	\$4,663,696	\$0	\$0	\$4,663,696
IND	4356191	Duval	SRA1A TIMUCUAN TRAIL FROM BIG TALBOT ISLAND TO LITTLE TALBOT ISLAND	\$2,243,504	\$0	\$0	\$0	\$0	\$0	\$0	\$0	\$0	\$1,000	\$2,242,504	\$1,652,476	\$591,028	\$0	\$0	\$2,243,504
ANNUAL TOTALS				\$3,908,180	\$0	\$0	\$0	\$0	\$4,663,696	\$0	\$0	\$0	\$0	\$1,000	\$8,570,876	\$7,980,848	\$591,028	\$0	\$8,571,876

Legend

Adopted Work Program

**FY 2019/2020 - 2023/2024
As of 7/1/2019**

FS= Feasibility Study; Phase Group - 1 and Phase Type - all but 1 and 9;
PDE= Project Development Environmental; Phase Group - 2 and Phase Type - all but 1 and 9;
PE= Preliminary Engineering; Phase Group - 3; Phase Type - all but 1 and 9;
ENV= Environmental/Mitigation; Phase Group - C; Phase Type - all but 1 and 9;
ROW= Right-of-Way; Phase Group - 4 and all Phase Type - all but 1 and 9;
CON + CEI= Construction and Support (may include Grants); Phase Group - 5, 6 and Phase Type - all but 1 and 9.

Notes

- (1) Tiers: C2C - Coast to Coast; SJR2C - St. Johns River - to - Sea Loop; IND - Individual;
- (2) Project costs are subject to change;
- (3) In the IND category, an allocation to one project phase is not a guarantee of commitment to allocations for future phases;
- (4) SUN Trail allocations have "TLWR" as the fund code;
- (5) "Other State, Federal funds" are non-TLWR funds administered by FDOT;
- (6) "Local funds" are programmed when a portion of the project is being provided by a non-FDOT source; may include funds from a city, county, another state agency, etc.

Shared-Use Nonmotorized (SUN) Trail Program

District 2

State of Florida Department of Transportation
Systems Implementation Office

Adopted Work Program

(FY 2019/2020 through 2023/2024)
as of July 1, 2019

LEGEND

Project Phase

- Feasibility Study
- Project Development & Environment
- Preliminary Engineering + ENV
- Right of Way
- Construction + CEI

- Two-mile Buffer of Coast To Coast
- Two-mile Buffer of St. Johns River - to - Sea Loop

Item #	439711	Tag for Regional Coast to Coast (C2C) Project
Description	N BEACH ST FROM 350 FEET SOUTH OF 2ND ST TO 2ND ST	
Phase, Dollar Amount and Fiscal Year	PE \$ 2,767.18 CON \$ 103,320.18 T	
Item #	439711	Tag for Regional St. Johns River - to - Sea Loop Project
Description	N BEACH ST FROM 350 FEET SOUTH OF 2ND ST TO 2ND ST	
Phase, Dollar Amount and Fiscal Year	PE \$ 2,767.18 CON \$ 103,320.18 T	
Item #	439711	Tag for Individual Project
Description	N BEACH ST FROM 350 FEET SOUTH OF 2ND ST TO 2ND ST	
Phase, Dollar Amount and Fiscal Year	PE \$ 2,767.18 CON \$ 103,320.18 T	

T = TLWR Funds
O = Other Funds
L = Local Funds

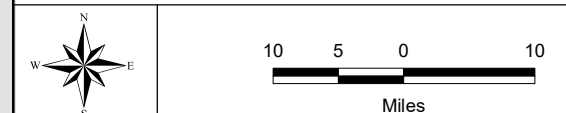
NOTES

- (1) In the individual trail category, an allocation to one project phase is not a guarantee of commitment to allocations for future phases.
- (2) Project costs are subject to change.
- (3) Projects are color coded by the last funded phase.
- (4) Project phases with funds committed under the past Adopted Work Program are not depicted.

Source:
Florida Department of Transportation
- Systems Implementation Office

Existing Conditions

- SUN Trail Network
- Highways
- Planned SIS roads
- Water
- ++ Railroads
- County Boundaries



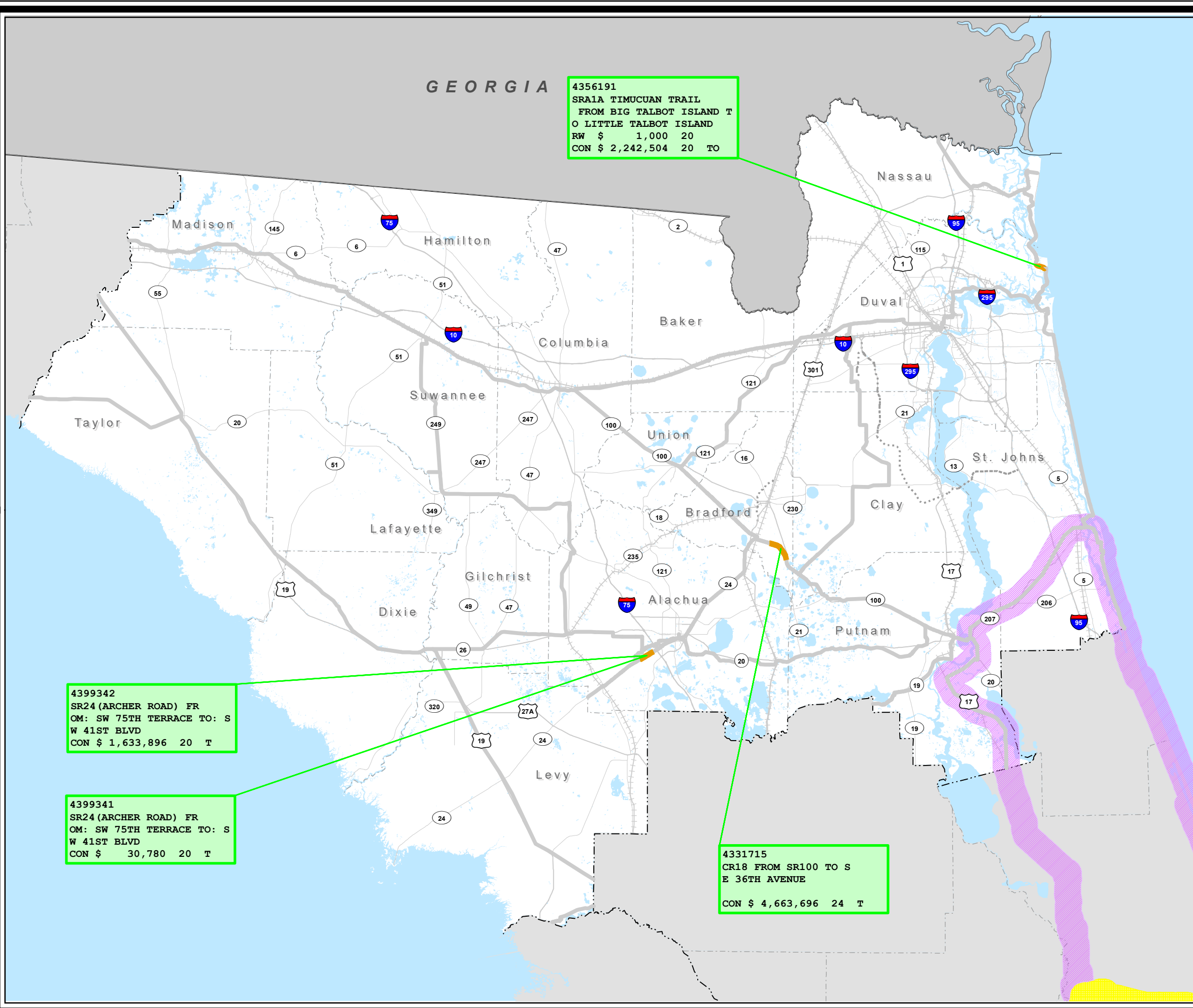
GEORGIA

4356191
SRA1A TIMUCUAN TRAIL
FROM BIG TALBOT ISLAND T
O LITTLE TALBOT ISLAND
RW \$ 1,000 20
CON \$ 2,242,504 20 TO

4399342
SR24 (ARCHER ROAD) FR
OM: SW 75TH TERRACE TO: S
W 41ST BLVD
CON \$ 1,633,896 20 T

4399341
SR24 (ARCHER ROAD) FR
OM: SW 75TH TERRACE TO: S
W 41ST BLVD
CON \$ 30,780 20 T

4331715
CR18 FROM SR100 TO S
E 36TH AVENUE
CON \$ 4,663,696 24 T





Shared-Use Nonmotorized (SUN) Trail Program

Projects



District 3

Adopted Work Program

TIER NAME	FM# ITEMSEG	COUNTY NAME	FACILITY	FISCAL YEAR					TOTAL COST BY PHASE						TOTAL SUN TRAIL FUNDS	OTHER STATE, FEDERAL FUNDS	TOTAL LOCAL FUNDS	GRAND TOTAL	
				2020	2021	2022	2023	2024	FS	PDE	PE	ENV	ROW	CON					
IND	4399262	Wakulla	SR 30 (US 98) COASTAL HWY FROM CR 372 SURF RD TO S OF TOWER RD	\$6,333,472	\$0	\$0	\$0	\$0	\$0	\$0	\$0	\$0	\$0	\$0	\$6,333,472	\$6,333,472	\$0	\$0	\$6,333,472
IND	4399263	Wakulla	SR 30 (US 98) COASTAL HWY FROM S OF TOWER ROAD TO SR 61 (US 319)	\$983,000	\$0	\$8,974,514	\$0	\$0	\$0	\$0	\$0	\$0	\$0	\$983,000	\$8,974,514	\$8,974,514	\$983,000	\$0	\$9,957,514
IND	4405501	Wakulla	SR 30 (US 98) FROM W OF SR 363 WOODVILLE HWY TO LIGHTHOUSE RD	\$0	\$0	\$0	\$0	\$3,546,733	\$0	\$0	\$0	\$0	\$0	\$0	\$3,546,733	\$3,546,733	\$0	\$0	\$3,546,733
ANNUAL TOTALS				\$7,316,472	\$0	\$8,974,514	\$0	\$3,546,733	\$0	\$0	\$0	\$0	\$0	\$983,000	\$18,854,719	\$18,854,719	\$983,000	\$0	\$19,837,719

Legend

Adopted Work Program

FY 2019/2020 - 2023/2024
As of 7/1/2019

FS= Feasibility Study; Phase Group - 1 and Phase Type - all but 1 and 9;
PDE= Project Development Environmental; Phase Group - 2 and Phase Type - all but 1 and 9;
PE= Preliminary Engineering; Phase Group - 3; Phase Type - all but 1 and 9;
ENV= Environmental/Mitigation; Phase Group - C; Phase Type - all but 1 and 9;
ROW= Right-of-Way; Phase Group - 4 and all Phase Type - all but 1 and 9;
CON + CEI= Construction and Support (may include Grants); Phase Group - 5, 6 and Phase Type - all but 1 and 9.

Notes

- (1) Tiers: C2C - Coast to Coast; SJR2C - St. Johns River - to - Sea Loop; IND - Individual;
- (2) Project costs are subject to change;
- (3) In the IND category, an allocation to one project phase is not a guarantee of commitment to allocations for future phases;
- (4) SUN Trail allocations have "TLWR" as the fund code;
- (5) "Other State, Federal funds" are non-TLWR funds administered by FDOT;
- (6) "Local funds" are programmed when a portion of the project is being provided by a non-FDOT source; may include funds from a city, county, another state agency, etc.

Shared-Use Nonmotorized (SUN) Trail Program

District 3

State of Florida Department of Transportation
Systems Implementation Office

Adopted Work Program

(FY 2019/2020 through 2023/2024)
as of July 1, 2019

LEGEND

- Project Phase**
- █ Feasibility Study
 - █ Project Development & Environment
 - █ Preliminary Engineering + ENV
 - █ Right of Way
 - █ Construction + CEI
- ▣ Two-mile Buffer of Coast To Coast
 - ▣ Two-mile Buffer of St. Johns River - to - Sea Loop

Item #	438711	Tag for Regional Coast to Coast (C2C) Project
Description	N BEACH ST FROM 300 FEET SOUTH OF 2ND ST TO 2ND ST	
Phase, Dollar Amount and Fiscal Year	PE \$ 2,767 18 CON \$ 103,320 18 T	
Item #	438711	Tag for Regional St. Johns River - to - Sea Loop Project
Description	N BEACH ST FROM 300 FEET SOUTH OF 2ND ST TO 2ND ST	
Phase, Dollar Amount and Fiscal Year	PE \$ 2,767 18 CON \$ 103,320 18 T	
Item #	438711	Tag for Individual Project
Description	N BEACH ST FROM 300 FEET SOUTH OF 2ND ST TO 2ND ST	
Phase, Dollar Amount and Fiscal Year	PE \$ 2,767 18 CON \$ 103,320 18 T	

T = TLWR Funds
O = Other Funds
L = Local Funds

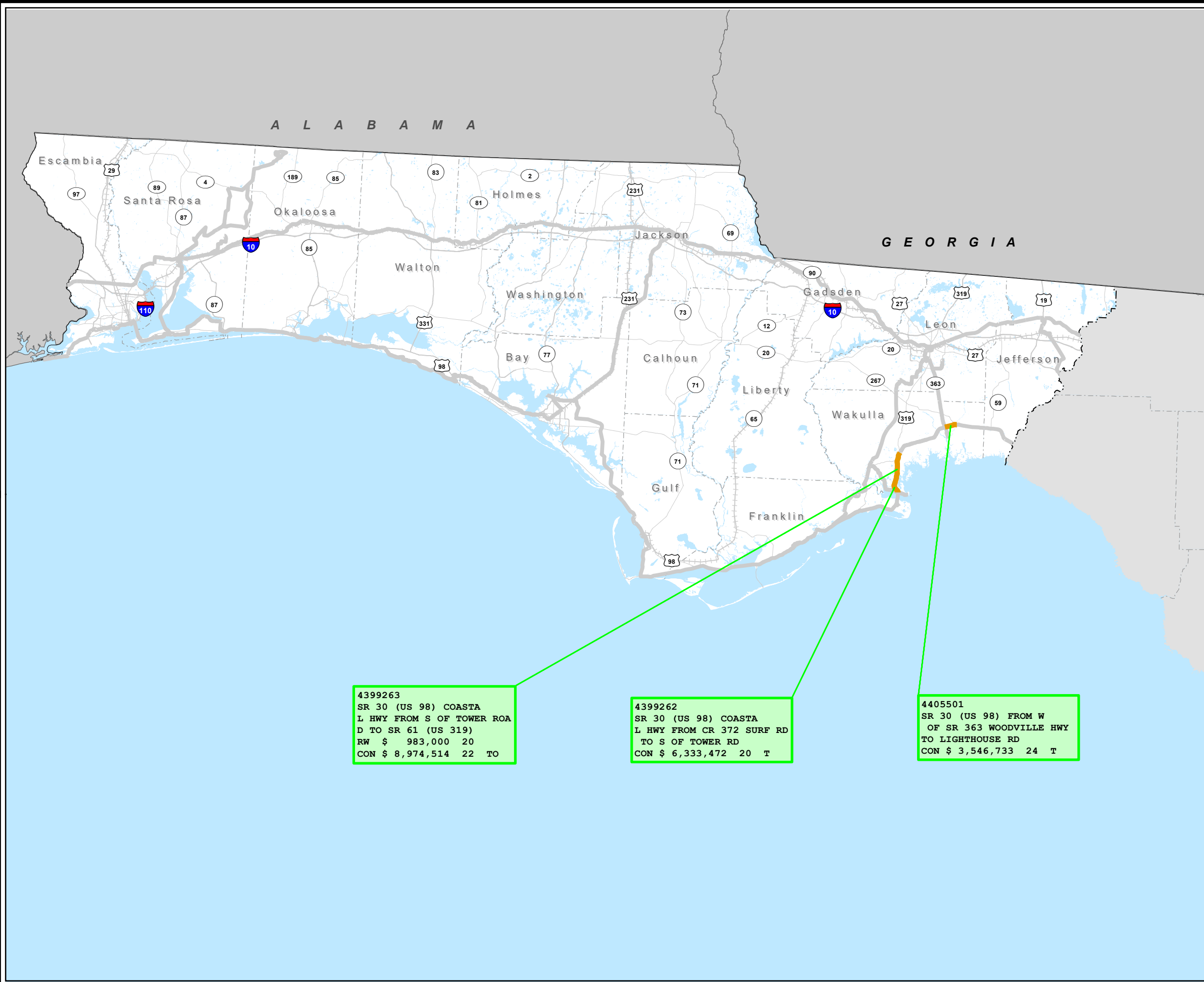
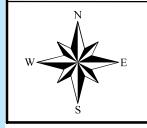
NOTES

- (1) In the individual trail category, an allocation to one project phase is not a guarantee of commitment to allocations for future phases.
- (2) Project costs are subject to change.
- (3) Projects are color coded by the last funded phase.
- (4) Project phases with funds committed under the past Adopted Work Program are not depicted.

Source:
Florida Department of Transportation
- Systems Implementation Office

Existing Conditions

- SUN Trail Network
- Highways
- Planned SIS roads
- Water
- ++ Railroads
- County Boundaries





Shared-Use Nonmotorized (SUN) Trail Program

Projects



District 4

Adopted Work Program

TIER NAME	FM # ITEMSEG	COUNTY NAME	FACILITY	FISCAL YEAR					TOTAL COST BY PHASE					TOTAL SUN TRAIL FUNDS	OTHER STATE, FEDERAL FUNDS	TOTAL LOCAL FUNDS	GRAND TOTAL	
				2020	2021	2022	2023	2024	FS	PDE	PE	ENV	ROW					CON
IND	4399991	St. Lucie	SAVANNAS PRESERVE STATE PARK GAP WALTON RD.TO SAVANNAS RECREATION AREA	\$75,000	\$0	\$0	\$0	\$0	\$0	\$0	\$0	\$75,000	\$0	\$0	\$75,000	\$0	\$0	\$75,000
IND	4399992	St. Lucie	SAVANNAS PRESERVE STATE PARK GAP FROM WALTON RD TO LENNARD RD	\$0	\$6,045,350	\$0	\$0	\$0	\$0	\$0	\$0	\$0	\$0	\$6,045,350	\$6,045,350	\$0	\$0	\$6,045,350
IND	4399993	St. Lucie	SAVANNAS PRESERVE STATE PARK FR LENNARD RD TO SAVANNAS RECREATION AREA	\$0	\$0	\$75,000	\$2,797,498	\$0	\$0	\$0	\$0	\$75,000	\$0	\$2,797,498	\$2,872,498	\$0	\$0	\$2,872,498
IND	4400321	St. Lucie	FEC OVERPASS FROM SAVANNAS RECREATION AREA TO SOUTH OF SAVANNAH RD.	\$0	\$0	\$325,000	\$162,377	\$0	\$0	\$0	\$325,000	\$115,000	\$47,377	\$0	\$440,000	\$47,377	\$0	\$487,377
ANNUAL TOTALS				\$75,000	\$6,045,350	\$400,000	\$2,959,875	\$0	\$0	\$0	\$325,000	\$265,000	\$47,377	\$8,842,848	\$9,432,848	\$47,377	\$0	\$9,480,225

Legend

Adopted Work Program

FY 2019/2020 - 2023/2024
As of 7/1/2019

FS= Feasibility Study; Phase Group - 1 and Phase Type - all but 1 and 9;
PDE= Project Development Environmental; Phase Group - 2 and Phase Type - all but 1 and 9;
PE= Preliminary Engineering; Phase Group - 3; Phase Type - all but 1 and 9;
ENV= Environmental/Mitigation; Phase Group - C; Phase Type - all but 1 and 9;
ROW= Right-of-Way; Phase Group - 4 and all Phase Type - all but 1 and 9;
CON + CEI= Construction and Support (may include Grants); Phase Group - 5, 6 and Phase Type - all but 1 and 9.

Notes

- (1) Tiers: C2C - Coast to Coast; SJR2C - St. Johns River - to - Sea Loop; IND - Individual;
- (2) Project costs are subject to change;
- (3) In the IND category, an allocation to one project phase is not a guarantee of commitment to allocations for future phases;
- (4) SUN Trail allocations have "TLWR" as the fund code;
- (5) "Other State, Federal funds" are non-TLWR funds administered by FDOT;
- (6) "Local funds" are programmed when a portion of the project is being provided by a non-FDOT source; may include funds from a city, county, another state agency, etc.

Shared-Use Nonmotorized (SUN) Trail Program

District 4

State of Florida Department of Transportation
Systems Implementation Office

Adopted Work Program

(FY 2019/2020 through 2023/2024)
as of July 1, 2019

LEGEND

- Project Phase**
- █ Feasibility Study
 - █ Project Development & Environment
 - █ Preliminary Engineering + ENV
 - █ Right of Way
 - █ Construction + CEI
- █ Two-mile Buffer of Coast To Coast
 - █ Two-mile Buffer of St. Johns River - to - Sea Loop

Item #	4398711	Tag for Regional Coast to Coast (C2C) Project
Description	N BEACH ST FROM 350 FEET SOUTH OF 2ND ST TO 2ND ST	
Phase, Dollar Amount and Fiscal Year	PE \$ 2,767 18 CON \$ 163,326 18 T	
Item #	4398711	Tag for Regional St. Johns River - to - Sea Loop Project
Description	N BEACH ST FROM 350 FEET SOUTH OF 2ND ST TO 2ND ST	
Phase, Dollar Amount and Fiscal Year	PE \$ 2,767 18 CON \$ 163,326 18 T	
Item #	4398711	Tag for Individual Project
Description	N BEACH ST FROM 350 FEET SOUTH OF 2ND ST TO 2ND ST	
Phase, Dollar Amount and Fiscal Year	PE \$ 2,767 18 CON \$ 163,326 18 T	

T = TLWR Funds
O = Other Funds
L = Local Funds

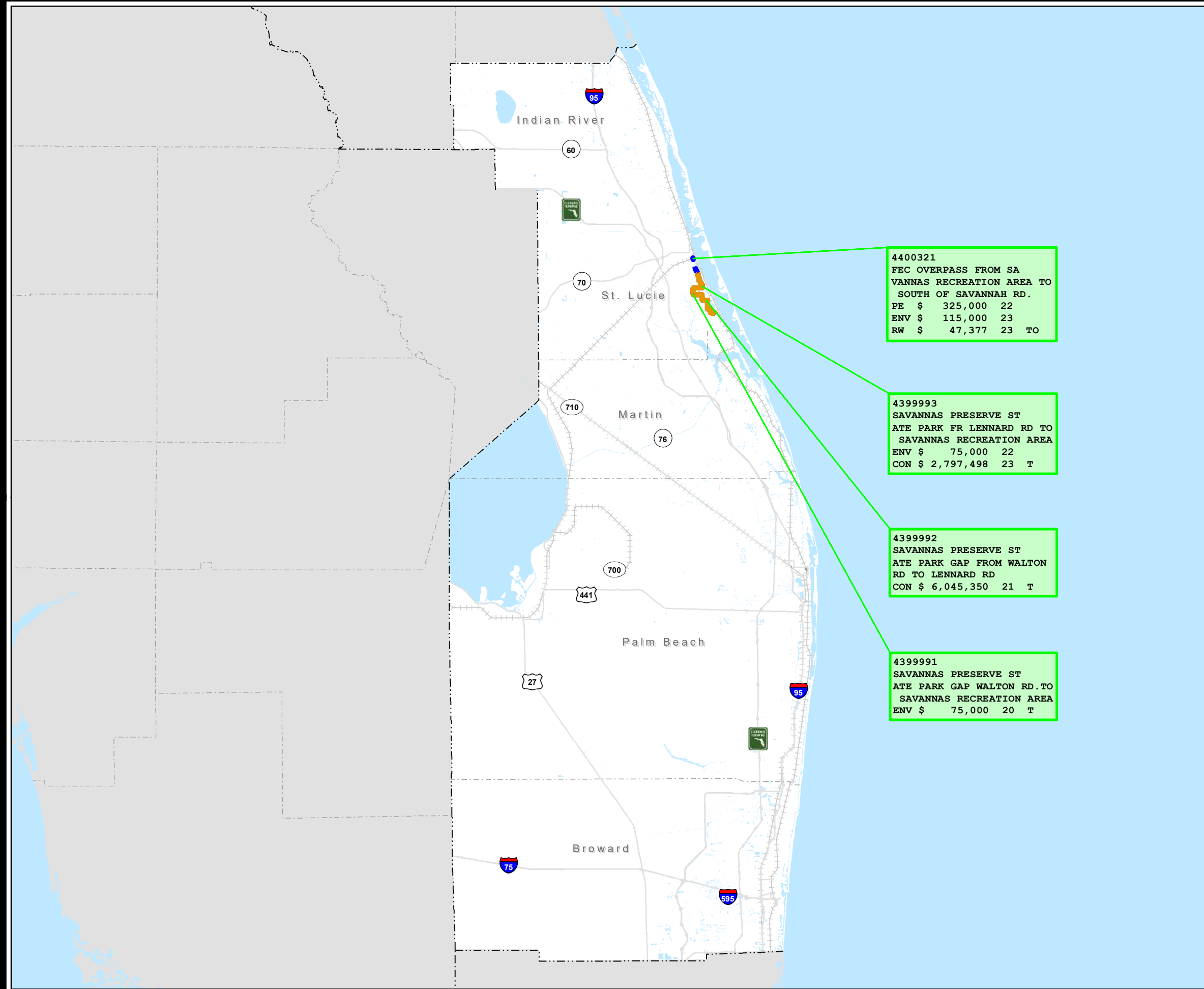
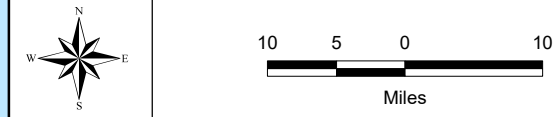
NOTES

- (1) In the individual trail category, an allocation to one project phase is not a guarantee of commitment to allocations for future phases.
- (2) Project costs are subject to change.
- (3) Projects are color coded by the last funded phase.
- (4) Project phases with funds committed under the past Adopted Work Program are not depicted.

Source:
Florida Department of Transportation
- Systems Implementation Office

Existing Conditions

- █ SUN Trail Network
- █ Water
- Highways
- ++ Railroads
- Planned SIS roads
- County Boundaries



4400321
FEC OVERPASS FROM SAVANNAS RECREATION AREA TO SOUTH OF SAVANNAH RD.
PE \$ 325,000 22
ENV \$ 115,000 23
RW \$ 47,377 23 TO

4399993
SAVANNAS PRESERVE ST ATE PARK FR LENNARD RD TO SAVANNAS RECREATION AREA
ENV \$ 75,000 22
CON \$ 2,797,498 23 T

4399992
SAVANNAS PRESERVE ST ATE PARK GAP FROM WALTON RD TO LENNARD RD
CON \$ 6,045,350 21 T

4399991
SAVANNAS PRESERVE ST ATE PARK GAP WALTON RD TO SAVANNAS RECREATION AREA
ENV \$ 75,000 20 T



Shared-Use Nonmotorized (SUN) Trail Program

Projects



District 5

Adopted Work Program

TIER NAME	FM # ITEMSEG	COUNTY NAME	FACILITY	FISCAL YEAR					TOTAL COST BY PHASE					TOTAL SUN TRAIL FUNDS	OTHER STATE, FEDERAL FUNDS	TOTAL LOCAL FUNDS	GRAND TOTAL		
				2020	2021	2022	2023	2024	FS	PDE	PE	ENV	ROW					CON	
C2C	4361872	Brevard	SPACE COAST TRAIL FROM INDIAN RIVER AVE TO W OF MAX BREWER BRIDGE	\$797,456	\$0	\$0	\$0	\$0	\$0	\$0	\$0	\$0	\$0	\$0	\$797,456	\$797,456	\$0	\$0	\$797,456
C2C	4364331	Orange	ORANGE COUNTY GAP SEGMENT 2 FROM HIAWASSEE RD TO NORTH OF SR 414	\$1,671,000	\$530,000	\$138,060	\$6,302,364	\$0	\$0	\$0	\$111,000	\$0	\$2,133,060	\$6,397,364	\$1,744,060	\$6,600,390	\$296,974	\$8,641,424	
C2C	4364342	Volusia	LAKE MONROE PARK ENTRANCE TO OLD DELAND RD	\$766,205	\$0	\$0	\$0	\$0	\$0	\$0	\$0	\$0	\$0	\$766,205	\$401,670	\$21,644	\$342,891	\$766,205	
SJR2C	4398731	Flagler	SR A1A FROM S 26TH ST TO N 9TH ST	\$0	\$2,500,000	\$0	\$0	\$0	\$0	\$0	\$0	\$0	\$0	\$0	\$2,500,000	\$0	\$0	\$2,500,000	
SJR2C	4390396	Volusia	SPR TO SPR TRAIL PHASE 3C W HIGHBANKS RD TO DEBARY PLANTATATION BLVD	\$0	\$0	\$0	\$0	\$1,173,000	\$0	\$0	\$0	\$0	\$0	\$1,173,000	\$1,173,000	\$0	\$0	\$1,173,000	
SJR2C	4398621	Volusia	US 1 FROM KENNEDY PARKWAY TO DALE AVE	\$0	\$2,349,000	\$0	\$6,891,281	\$0	\$0	\$0	\$0	\$0	\$0	\$6,891,281	\$8,238,944	\$1,001,337	\$0	\$9,240,281	
SJR2C	4398641	Volusia	ST JOHNS RIVER TO SEA LOOP MYRTLE AVE FROM 10TH ST TO SR 44/LYTTLE AVE	\$280,000	\$580,000	\$400,350	\$97,440	\$2,779,921	\$0	\$0	\$77,500	\$0	\$1,280,290	\$2,779,921	\$4,060,211	\$77,500	\$0	\$4,137,711	
SJR2C	4398741	Volusia	ST JOHNS RIVER TO SEA LOOP FROM LAKE BERESFORD PARK TO GRAND AVE	\$0	\$0	\$0	\$9,373,730	\$0	\$0	\$0	\$0	\$0	\$0	\$9,373,730	\$8,156,025	\$1,217,705	\$0	\$9,373,730	
SJR2C	4398742	Volusia	ST JOHNS RIVER TO SEA LOOP LAKE BERESFORD PARK TO OLD NEW YORK AVE	\$1,179,193	\$0	\$0	\$0	\$0	\$0	\$0	\$1,179,193	\$0	\$0	\$0	\$1,179,193	\$0	\$0	\$1,179,193	
SJR2C	4398743	Volusia	ST JOHNS RIVER TO SEA LOOP FROM OLD NEW YORK AVE TO SR 44	\$428,798	\$0	\$0	\$0	\$0	\$0	\$0	\$428,798	\$0	\$0	\$0	\$428,798	\$0	\$0	\$428,798	
SJR2C	4398744	Volusia	ST JOHNS RIVER TO SEA LOOP FROM SR 44 TO EXISTING GRAND AVE TRAIL	\$535,997	\$0	\$0	\$0	\$0	\$0	\$0	\$535,997	\$0	\$0	\$0	\$535,997	\$0	\$0	\$535,997	
SJR2C	4398751	Volusia	ST JOHNS RIVER TO SEA LOOP FROM GRAND AVE/BAXTER ST TO SR 15 (US 17)	\$1,500,000	\$0	\$0	\$0	\$0	\$0	\$0	\$0	\$0	\$0	\$1,500,000	\$1,500,000	\$0	\$0	\$1,500,000	
SJR2C	4398761	Volusia	SR 15 (US 17) FROM SR 40 TO PUTNAM COUNTY LINE	\$0	\$2,835,000	\$0	\$0	\$0	\$0	\$0	\$0	\$0	\$0	\$0	\$2,835,000	\$0	\$0	\$2,835,000	
ANNUAL TOTALS				\$7,158,649	\$8,794,000	\$538,410	\$22,664,815	\$3,952,921	\$0	\$0	\$10,016,488	\$0	\$3,413,350	\$29,678,957	\$33,550,354	\$8,918,576	\$639,865	\$42,811,821	

Legend

Adopted Work Program

FY 2019/2020 - 2023/2024
As of 7/1/2019

FS= Feasibility Study; Phase Group - 1 and Phase Type - all but 1 and 9;
PDE= Project Development Environmental; Phase Group - 2 and Phase Type - all but 1 and 9;
PE= Preliminary Engineering; Phase Group - 3; Phase Type - all but 1 and 9;
ENV= Environmental/Mitigation; Phase Group - C; Phase Type - all but 1 and 9;
ROW= Right-of-Way; Phase Group - 4 and all Phase Type - all but 1 and 9;
CON + CEI= Construction and Support (may include Grants); Phase Group - 5, 6 and Phase Type - all but 1 and 9.

Notes

- (1) Tiers: C2C - Coast to Coast; SJR2C - St. Johns River - to - Sea Loop; IND - Individual;
- (2) Project costs are subject to change;
- (3) In the IND category, an allocation to one project phase is not a guarantee of commitment to allocations for future phases;
- (4) SUN Trail allocations have "TLWR" as the fund code;
- (5) "Other State, Federal funds" are non-TLWR funds administered by FDOT;
- (6) "Local funds" are programmed when a portion of the project is being provided by a non-FDOT source; may include funds from a city, county, another state agency, etc.

Shared-Use Nonmotorized (SUN) Trail Program

District 5

State of Florida Department of Transportation
Systems Implementation Office

Adopted Work Program

(FY 2019/2020 through 2023/2024)
as of July 1, 2019

LEGEND

- Project Phase**
- █ Feasibility Study
 - █ Project Development & Environment
 - █ Preliminary Engineering + ENV
 - █ Right of Way
 - █ Construction + CEI
- Two-mile Buffer of Coast To Coast
- Two-mile Buffer of St. Johns River - to - Sea Loop

Item #	4398711	Tag for Regional Coast to Coast (C2C) Project
Description	N BEACH ST FROM 350 FEET SOUTH OF 2ND ST TO 2 ND ST	
Phase, Dollar Amount and Fiscal Year	PE \$ 2,767,18 CON \$ 183,326 18 T	
Item #	4398711	Tag for Regional St. Johns River - to - Sea Loop Project
Description	N BEACH ST FROM 350 FEET SOUTH OF 2ND ST TO 2 ND ST	
Phase, Dollar Amount and Fiscal Year	PE \$ 2,767,18 CON \$ 183,326 18 T	
Item #	4398711	Tag for Individual Project
Description	N BEACH ST FROM 350 FEET SOUTH OF 2ND ST TO 2 ND ST	
Phase, Dollar Amount and Fiscal Year	PE \$ 2,767,18 CON \$ 183,326 18 T	

T = TLWR Funds
O = Other Funds
L = Local Funds

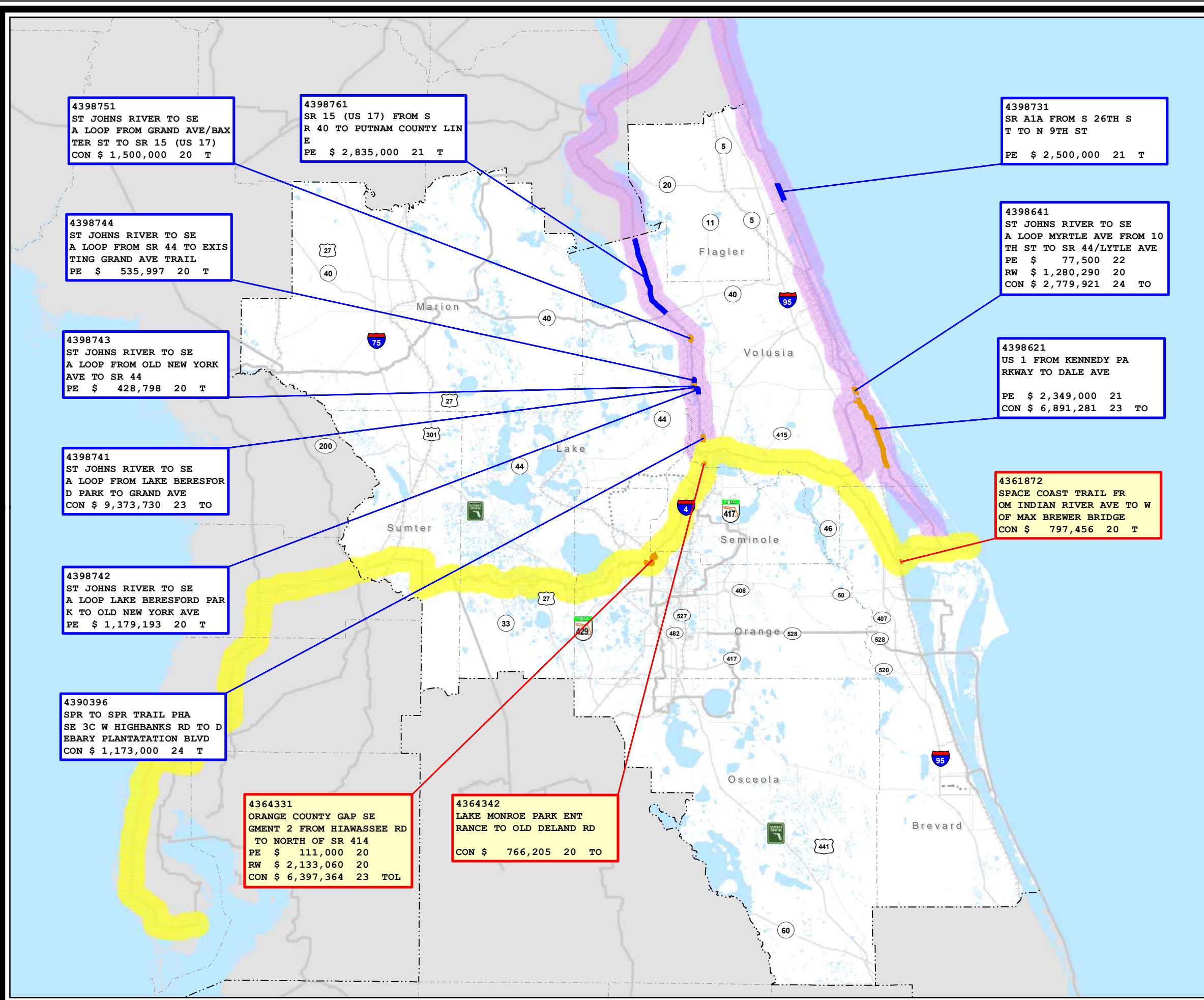
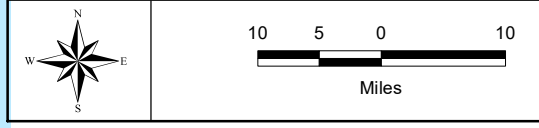
NOTES

- (1) In the individual trail category, an allocation to one project phase is not a guarantee of commitment to allocations for future phases.
- (2) Project costs are subject to change.
- (3) Projects are color coded by the last funded phase.
- (4) Project phases with funds committed under the past Adopted Work Program are not depicted.

Source:
Florida Department of Transportation
- Systems Implementation Office

Existing Conditions

- SUN Trail Network
- Highways
- Planned SIS roads
- Water
- Railroads
- County Boundaries



4398751
ST JOHNS RIVER TO SE
A LOOP FROM GRAND AVE/BAK
TER ST TO SR 15 (US 17)
CON \$ 1,500,000 20 T

4398761
SR 15 (US 17) FROM S
R 40 TO PUTNAM COUNTY LIN
E
PE \$ 2,835,000 21 T

4398731
SR A1A FROM S 26TH S
T TO N 9TH ST
PE \$ 2,500,000 21 T

4398744
ST JOHNS RIVER TO SE
A LOOP FROM SR 44 TO EXIS
TING GRAND AVE TRAIL
PE \$ 535,997 20 T

4398641
ST JOHNS RIVER TO SE
A LOOP MYRTLE AVE FROM 10
TH ST TO SR 44/LYTLE AVE
PE \$ 77,500 22
RW \$ 1,280,290 20
CON \$ 2,779,921 24 TO

4398743
ST JOHNS RIVER TO SE
A LOOP FROM OLD NEW YORK
AVE TO SR 44
PE \$ 428,798 20 T

4398621
US 1 FROM KENNEDY PA
RKWAY TO DALE AVE
PE \$ 2,349,000 21
CON \$ 6,891,281 23 TO

4398741
ST JOHNS RIVER TO SE
A LOOP FROM LAKE BERESFOR
D PARK TO GRAND AVE
CON \$ 9,373,730 23 TO

4361872
SPACE COAST TRAIL FR
OM INDIAN RIVER AVE TO W
OF MAX BREWER BRIDGE
CON \$ 797,456 20 T

4398742
ST JOHNS RIVER TO SE
A LOOP LAKE BERESFORD PAR
K TO OLD NEW YORK AVE
PE \$ 1,179,193 20 T

4390396
SPR TO SPR TRAIL PHA
SE 3C W HIGHBANKS RD TO D
EBARY PLANTATATION BLVD
CON \$ 1,173,000 24 T

4364331
ORANGE COUNTY GAP SE
GMENT 2 FROM HIAWASSEE RD
TO NORTH OF SR 414
PE \$ 111,000 20
RW \$ 2,133,060 20
CON \$ 6,397,364 23 TOL

4364342
LAKE MONROE PARK ENT
RANCE TO OLD DELAND RD
CON \$ 766,205 20 TO



Shared-Use Nonmotorized (SUN) Trail Program

Projects



District 6

Adopted Work Program

TIER NAME	FM # ITEMSEG	COUNTY NAME	FACILITY	FISCAL YEAR					TOTAL COST BY PHASE						TOTAL SUN TRAIL FUNDS	OTHER STATE, FEDERAL FUNDS	TOTAL LOCAL FUNDS	GRAND TOTAL		
				2020	2021	2022	2023	2024	FS	PDE	PE	ENV	ROW	CON						
IND	4166604	Miami-Dade	MIAMI DADE COUNTY - LUDLAM TRAIL FROM NW 7 STREET TO SW 40 STREET	\$0	\$8,000,000	\$0	\$0	\$0	\$0	\$0	\$0	\$0	\$0	\$0	\$0	\$8,000,000	\$8,000,000	\$0	\$0	\$8,000,000
IND	4398981	Miami-Dade	BISCAYNE TRAIL SEGMENT D PHASE II FROM SW 117 AVE TO SW 137 AVE	\$0	\$0	\$0	\$0	\$1,519,597	\$0	\$0	\$0	\$0	\$0	\$0	\$0	\$1,519,597	\$1,254,731	\$0	\$264,866	\$1,519,597
IND	4436131	Miami-Dade	BISCAYNE EVERGLADES GREENWAY: MOWRY DRIVE FROM NE 12TH TO SW 192ND AVE	\$65,000	\$0	\$0	\$0	\$0	\$0	\$65,000	\$0	\$0	\$0	\$0	\$0	\$65,000	\$0	\$0	\$0	\$65,000
ANNUAL TOTALS				\$65,000	\$8,000,000	\$0	\$0	\$1,519,597	\$0	\$65,000	\$0	\$0	\$0	\$0	\$0	\$9,519,597	\$9,319,731	\$0	\$264,866	\$9,319,731

Legend

Adopted Work Program

FY 2019/2020 - 2023/2024
As of 7/1/2019

FS= Feasibility Study; Phase Group - 1 and Phase Type - all but 1 and 9;
PDE= Project Development Environmental; Phase Group - 2 and Phase Type - all but 1 and 9;
PE= Preliminary Engineering; Phase Group - 3; Phase Type - all but 1 and 9;
ENV= Environmental/Mitigation; Phase Group - C; Phase Type - all but 1 and 9;
ROW= Right-of-Way; Phase Group - 4 and all Phase Type - all but 1 and 9;
CON + CEI= Construction and Support (may include Grants); Phase Group - 5, 6 and Phase Type - all but 1 and 9.

Notes

- (1) Tiers: C2C - Coast to Coast; SJR2C - St. Johns River - to - Sea Loop; IND - Individual;
- (2) Project costs are subject to change;
- (3) In the IND category, an allocation to one project phase is not a guarantee of commitment to allocations for future phases;
- (4) SUN Trail allocations have "TLWR" as the fund code;
- (5) "Other State, Federal funds" are non-TLWR funds administered by FDOT;
- (6) "Local funds" are programmed when a portion of the project is being provided by a non-FDOT source; may include funds from a city, county, another state agency, etc.

Shared-Use Nonmotorized (SUN) Trail Program

District 6

State of Florida Department of Transportation
Systems Implementation Office

Adopted Work Program

(FY 2019/2020 through 2023/2024)
as of July 1, 2019

LEGEND

Project Phase

- █ Feasibility Study
- █ Project Development & Environment
- █ Preliminary Engineering + ENV
- █ Right of Way
- █ Construction + CEI
- ▨ Two-mile Buffer of Coast To Coast
- ▨ Two-mile Buffer of St. Johns River - to - Sea Loop

Item #	4398711	Tag for Regional Coast to Coast (C2C) Project
Description	N BEACH ST FROM 350 FEET SOUTH OF 2ND ST TO 2ND ST	
Phase, Dollar Amount and Fiscal Year	PE \$ 2,767 18 CON \$ 103,320 18 T	
Item #	4398711	Tag for Regional St. Johns River - to - Sea Loop Project
Description	N BEACH ST FROM 350 FEET SOUTH OF 2ND ST TO 2ND ST	
Phase, Dollar Amount and Fiscal Year	PE \$ 2,767 18 CON \$ 103,320 18 T	
Item #	4398711	Tag for Individual Project
Description	N BEACH ST FROM 350 FEET SOUTH OF 2ND ST TO 2ND ST	
Phase, Dollar Amount and Fiscal Year	PE \$ 2,767 18 CON \$ 103,320 18 T	

T = TLWR Funds
O = Other Funds
L = Local Funds

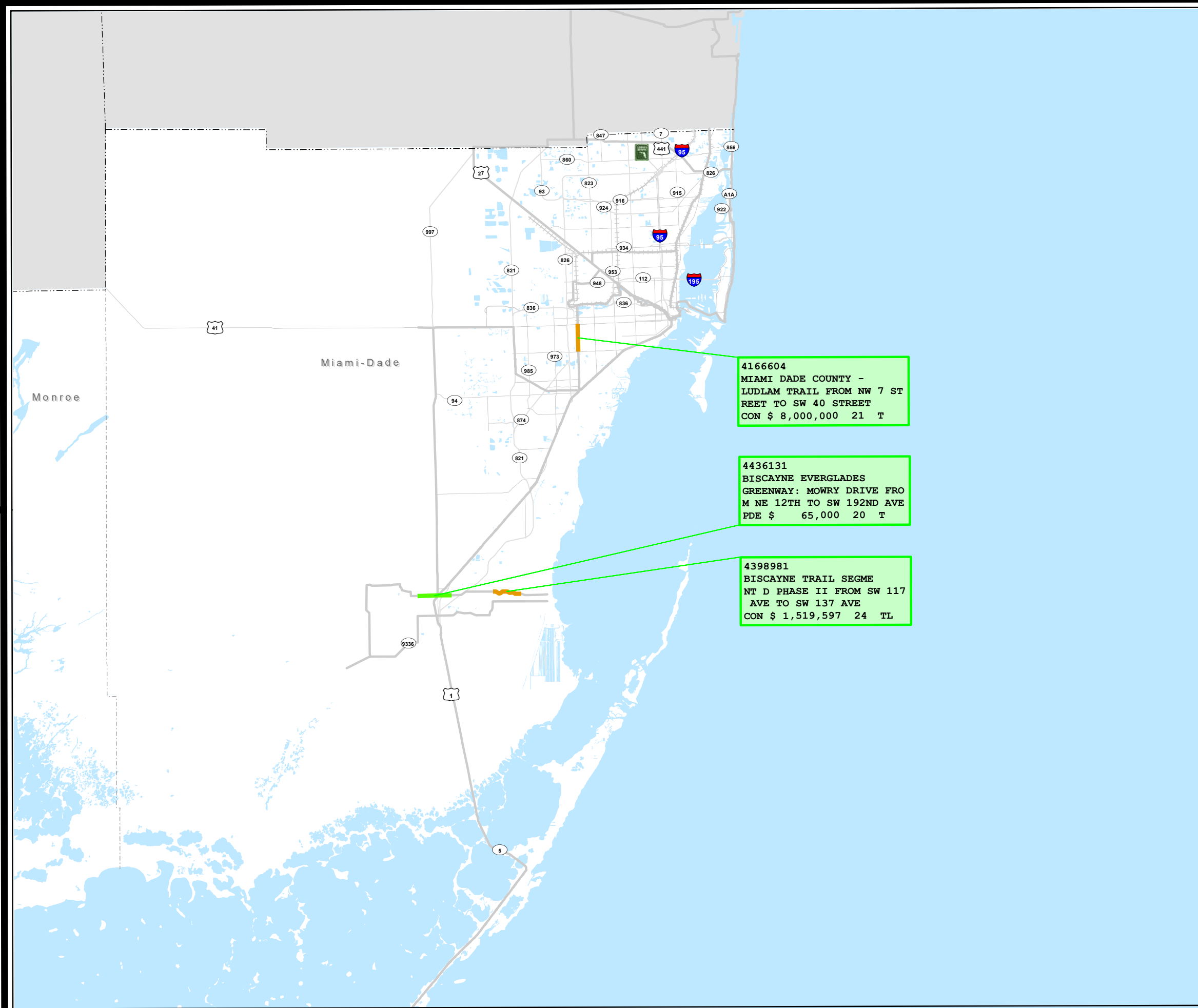
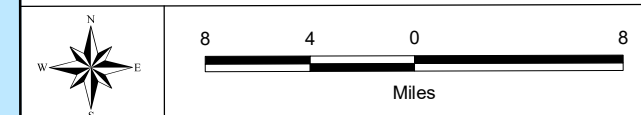
NOTES

- (1) In the individual trail category, an allocation to one project phase is not a guarantee of commitment to allocations for future phases.
- (2) Project costs are subject to change.
- (3) Projects are color coded by the last funded phase.
- (4) Project phases with funds committed under the past Adopted Work Program are not depicted.

Source:
Florida Department of Transportation
- Systems Implementation Office

Existing Conditions

- SUN Trail Network
- Highways
- Planned SIS roads
- █ Water
- ++ Railroads
- County Boundaries





Shared-Use Nonmotorized (SUN) Trail Program

Projects



District 7

Adopted Work Program

TIER NAME	FM # ITEMSEG	COUNTY NAME	FACILITY	FISCAL YEAR					TOTAL COST BY PHASE					TOTAL SUN TRAIL FUNDS	OTHER STATE, FEDERAL FUNDS	TOTAL LOCAL FUNDS	GRAND TOTAL	
				2020	2021	2022	2023	2024	FS	PDE	PE	ENV	ROW					CON
C2C	4357201	Hernando	GOOD NEIGHBOR TRL CONNECTOR FM W OF SUNCOAST PKWY TO SR 50/CORTEZ BLVD	\$5,277,528	\$0	\$0	\$0	\$0	\$0	\$0	\$0	\$37,058	\$23,015	\$5,217,455	\$5,217,455	\$60,073	\$0	\$5,277,528
C2C	4372642	Hernando	GOOD NEIGHBOR TRAIL GAP FR W OF SR 50/CORTEZ BLVD TO GOOD NEIGHBOR TR	\$3,200,800	\$0	\$15,409,369	\$0	\$0	\$0	\$0	\$0	\$0	\$3,200,800	\$15,409,369	\$17,577,188	\$1,032,981	\$0	\$18,610,169
IND	4400933	Pinellas	PINELLAS TRAIL LOOP - PH 4 FROM 126TH AVE N TO ULMERTON RD	\$0	\$0	\$293,627	\$0	\$1,468,133	\$0	\$0	\$293,627	\$0	\$0	\$1,468,133	\$1,761,760	\$0	\$0	\$1,761,760
ANNUAL TOTALS				\$8,478,328	\$0	\$15,702,996	\$0	\$1,468,133	\$0	\$0	\$293,627	\$37,058	\$3,223,815	\$22,094,957	\$24,556,403	\$1,093,054	\$0	\$25,649,457

Legend

Adopted Work Program

**FY 2019/2020 - 2023/2024
As of 7/1/2019**

FS= Feasibility Study; Phase Group - 1 and Phase Type - all but 1 and 9;
PDE= Project Development Environmental; Phase Group - 2 and Phase Type - all but 1 and 9;
PE= Preliminary Engineering; Phase Group - 3; Phase Type - all but 1 and 9;
ENV= Environmental/Mitigation; Phase Group - C; Phase Type - all but 1 and 9;
ROW= Right-of-Way; Phase Group - 4 and all Phase Type - all but 1 and 9;
CON + CEI= Construction and Support (may include Grants); Phase Group - 5, 6 and Phase Type - all but 1 and 9.

Notes

- (1) Tiers: C2C - Coast to Coast; SJR2C - St. Johns River - to - Sea Loop; IND - Individual;
- (2) Project costs are subject to change;
- (3) In the IND category, an allocation to one project phase is not a guarantee of commitment to allocations for future phases;
- (4) SUN Trail allocations have "TLWR" as the fund code;
- (5) "Other State, Federal funds" are non-TLWR funds administered by FDOT;
- (6) "Local funds" are programmed when a portion of the project is being provided by a non-FDOT source; may include funds from a city, county, another state agency, etc.

Shared-Use Nonmotorized (SUN) Trail Program

District 7

State of Florida Department of Transportation
Systems Implementation Office

Adopted Work Program

(FY 2019/2020 through 2023/2024)
as of July 1, 2019

LEGEND

Project Phase

- Feasibility Study
- Project Development & Environment
- Preliminary Engineering + ENV
- Right of Way
- Construction + CEI
- Two-mile Buffer of Coast To Coast
- Two-mile Buffer of St. Johns River - to - Sea Loop

Item #	438711	Tag for Regional Coast to Coast (C2C) Project
Description	N BEACH ST FROM 350 FEET SOUTH OF 2ND ST TO 2 ND ST	
Phase, Dollar Amount and Fiscal Year	PE \$ 2,767 18 CON \$ 193,329 18 T	
Item #	438711	Tag for Regional St. Johns River - to - Sea Loop Project
Description	N BEACH ST FROM 350 FEET SOUTH OF 2ND ST TO 2 ND ST	
Phase, Dollar Amount and Fiscal Year	PE \$ 2,767 18 CON \$ 193,329 18 T	
Item #	438711	Tag for Individual Project
Description	N BEACH ST FROM 350 FEET SOUTH OF 2ND ST TO 2 ND ST	
Phase, Dollar Amount and Fiscal Year	PE \$ 2,767 18 CON \$ 193,329 18 T	

T = TLWR Funds
O = Other Funds
L = Local Funds

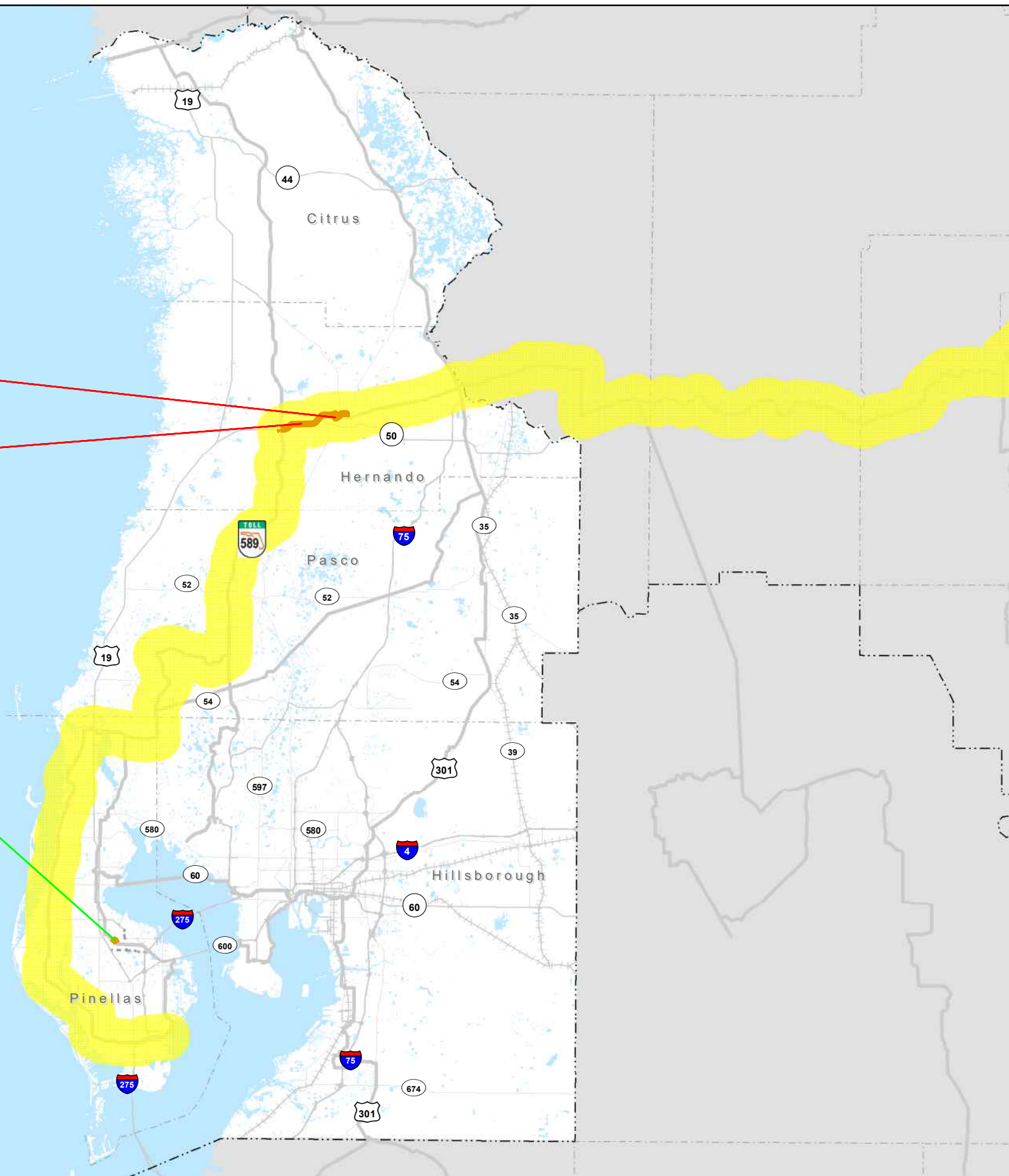
NOTES

- (1) In the individual trail category, an allocation to one project phase is not a guarantee of commitment to allocations for future phases.
- (2) Project costs are subject to change.
- (3) Projects are color coded by the last funded phase.
- (4) Project phases with funds committed under the past Adopted Work Program are not depicted.

Source:
Florida Department of Transportation
- Systems Implementation Office

Existing Conditions

- SUN Trail Network
- Highways
- Planned SIS roads
- Water
- Railroads
- County Boundaries



4372642
GOOD NEIGHBOR TRAIL
GAP FR W OF SR 50/CORTEZ
BLVD TO GOOD NEIGHBOR TR
RW \$ 3,200,800 20
CON \$15,409,369 22 TO

4357201
GOOD NEIGHBOR TRL CO
NNECTOR FM W OF SUNCOAST
PKWY TO SR 50/CORTEZ BLVD
ENV \$ 37,058 20
RW \$ 23,015 20
CON \$ 5,217,455 20 TO

4400933
PINELLAS TRAIL LOOP
- PH 4 FROM 126TH AVE N T
O ULMERTON RD
PE \$ 293,627 22
CON \$ 1,468,133 24 T



Shared-Use Nonmotorized (SUN) Trail Program

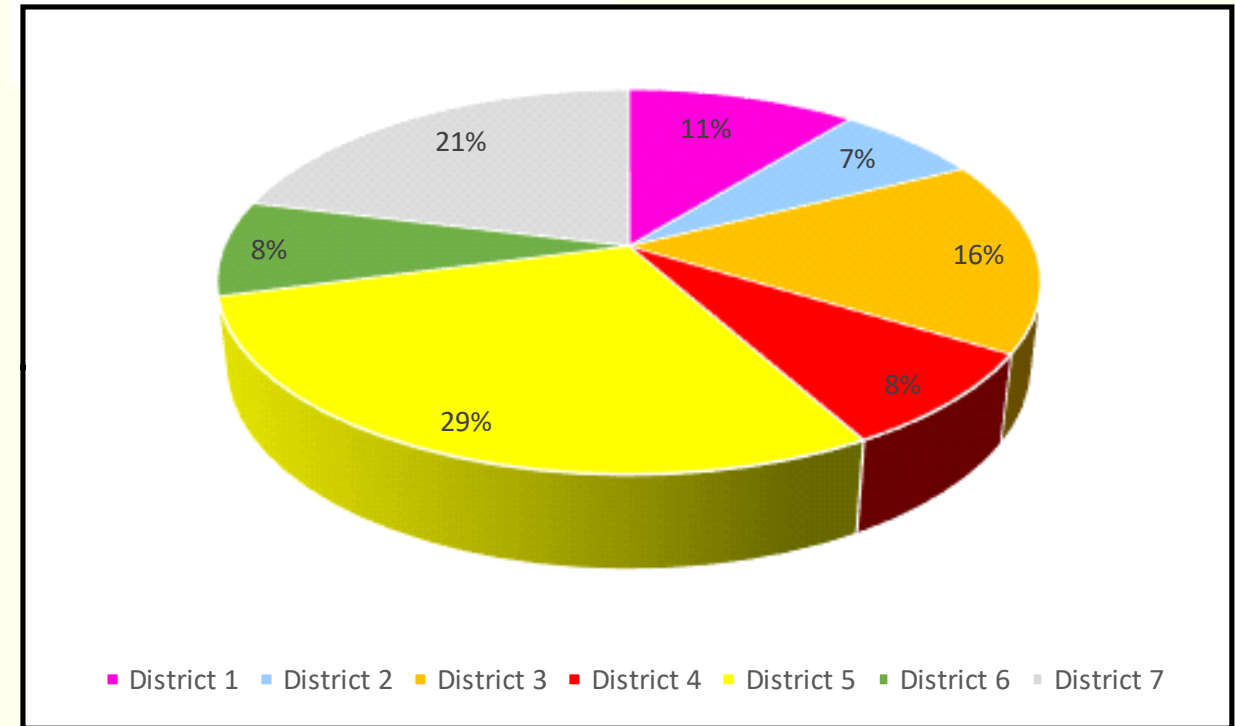
Projects



Adopted Work Program (FY 2019/2020 through 2023/2024) as of July 1, 2019

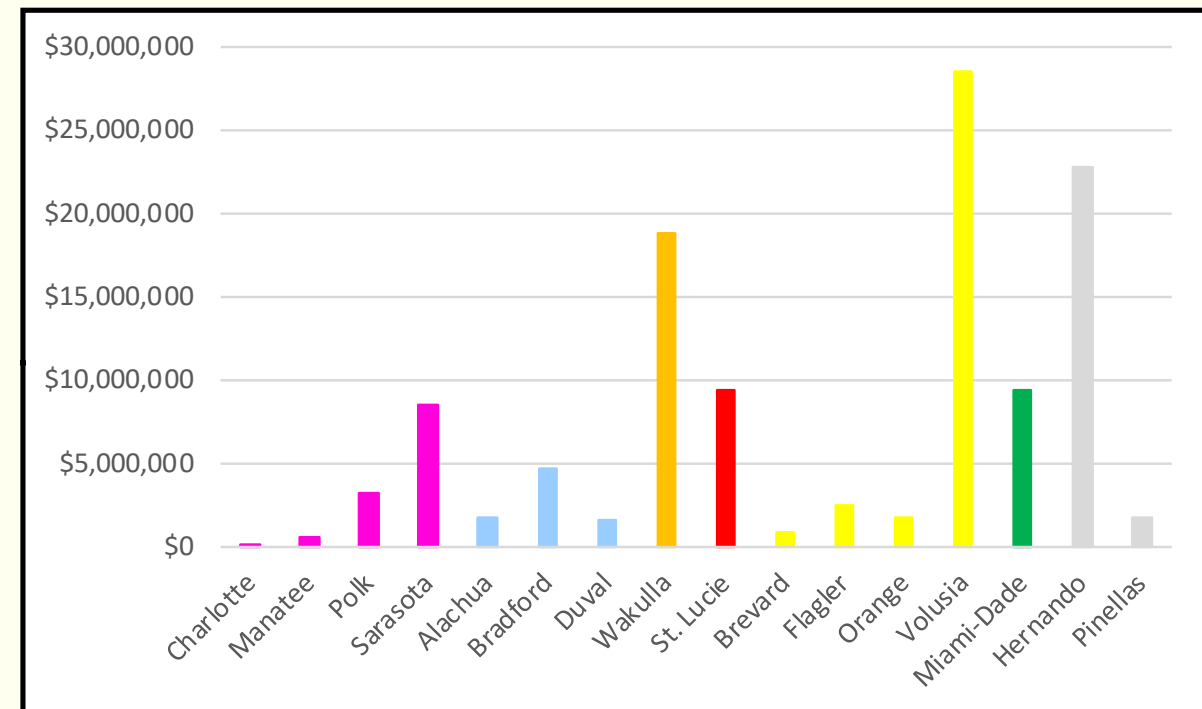
District	Cost	Total %
District 1	\$12,437,690	11%
District 2	\$7,980,848	7%
District 3	\$18,854,719	16%
District 4	\$9,433,848	8%
District 5	\$33,550,354	29%
District 6	\$9,319,731	8%
District 7	\$24,556,403	21%
Total	\$116,133,593	100%

← Funding By District →



District	County Name	Cost
1	Charlotte	\$110,000
1	Manatee	\$511,111
1	Polk	\$3,259,579
1	Sarasota	\$8,557,000
2	Alachua	\$1,664,676
2	Bradford	\$4,663,696
2	Duval	\$1,652,476
3	Wakulla	\$18,854,719
4	St. Lucie	\$9,432,848
5	Brevard	\$797,456
5	Flagler	\$2,500,000
5	Orange	\$1,744,060
5	Volusia	\$28,508,838
6	Miami-Dade	\$9,319,731
7	Hernando	\$22,794,643
7	Pinellas	\$1,761,760
TOTAL		\$116,132,593

← Funding By County →

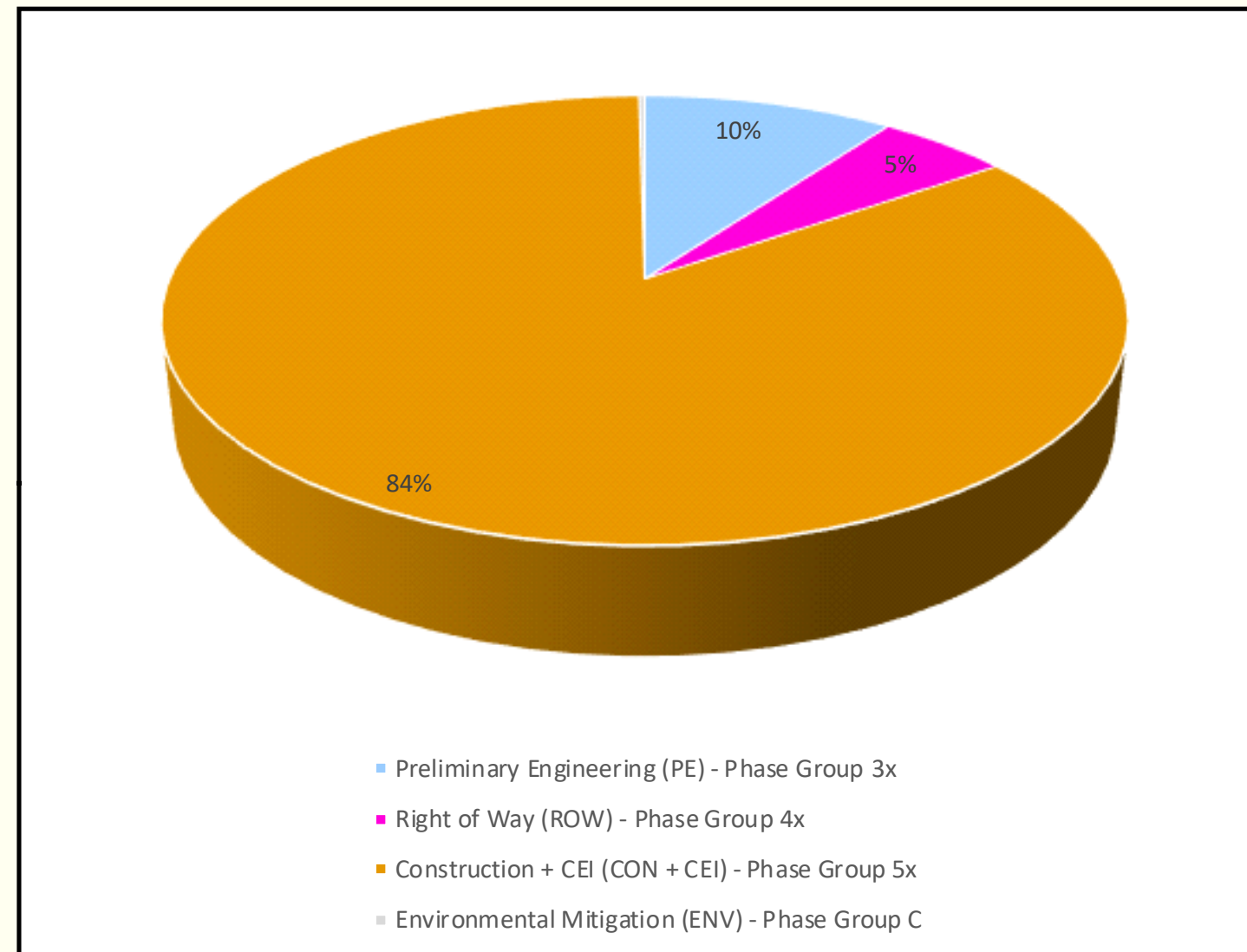


Adopted Work Program (FY 2019/2020 through 2023/2024) as of July 1, 2019

Funding By Phase

Phase	Cost	Total %
Feasibility Study (FS) - Phase Group 1x *	\$110,000	0%
Project Development & Environment (PDE) - Phase Group 2x *	\$65,000	0%
Preliminary Engineering (PE) - Phase Group 3x	\$11,614,615	10%
Right of Way (ROW) - Phase Group 4x	\$6,114,150	5%
Construction + CEI (CON + CEI) - Phase Group 5x	\$97,963,828	84%
Environmental Mitigation (ENV) - Phase Group C	\$265,000	0%
Total	\$116,132,593	100%

* Less than \$200,000 not visible in pie chart





State of Florida Department of Transportation

605 Suwannee Street • Tallahassee, FL 32399

www.dot.state.fl.us

