

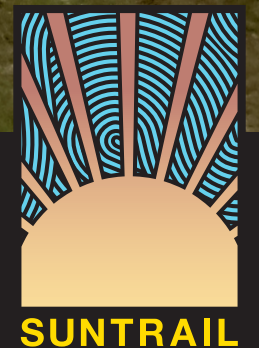
# Shared-Use Nonmotorized (SUN) Trail

Adopted Work Program - **Detailed Map and Table Set**

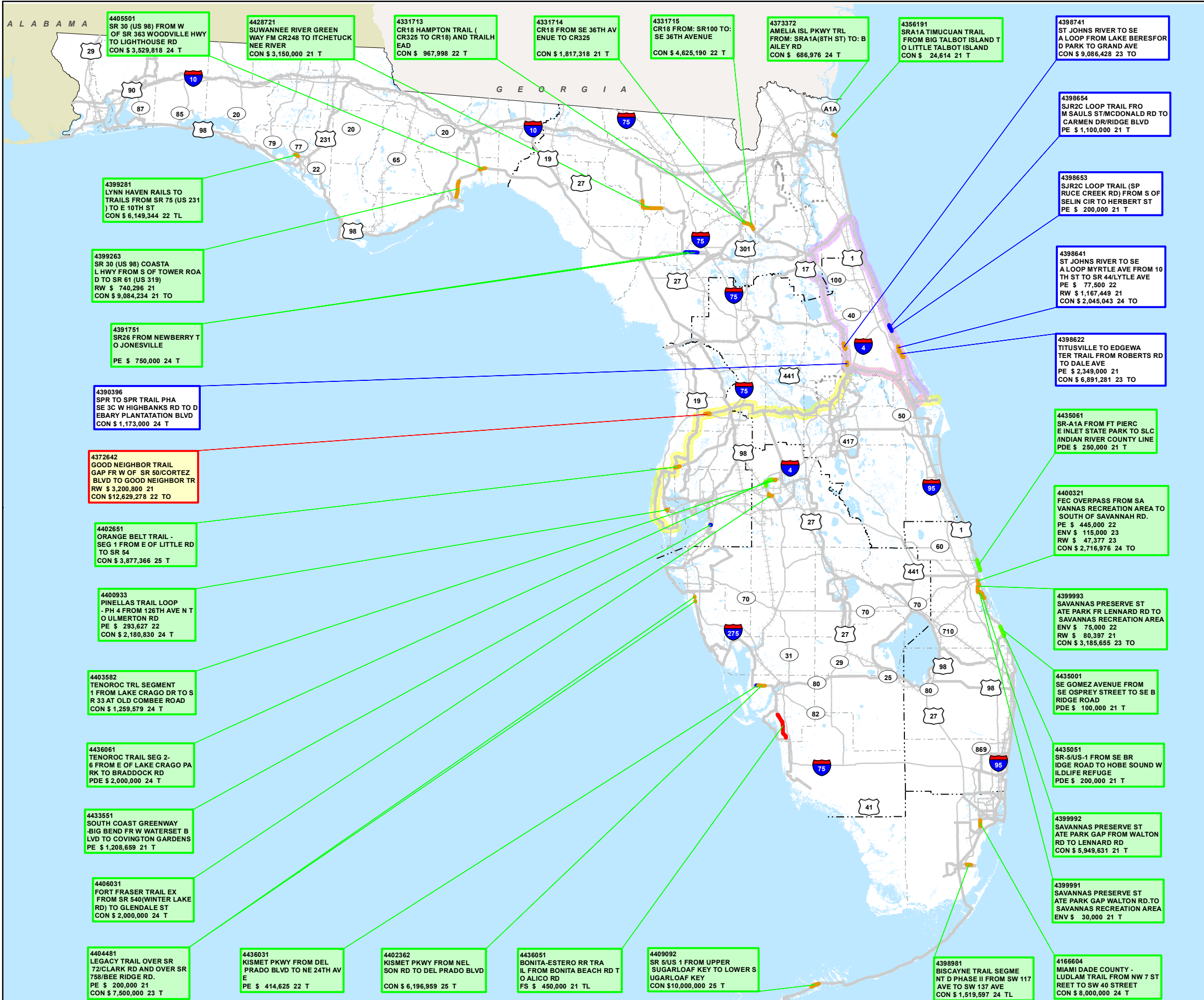


Tower Road Multi-Use Path

Regional and Individual Trail Projects  
**Fiscal Years 2020/2021 – 2024/2025**  
*As of July 1, 2020*







## Shared-Use Nonmotorized (SUN) Trail Program

**Statewide**  
State of Florida Department of Transportation  
Systems Implementation Office

**Adopted Work Program**  
**(FY 2020/2021 - 2024/2025)**  
as of July 1, 2020

**Legend**

**Project Phase**

- Feasibility Study
- Project Development & Environment
- Preliminary Engineering
- Right of Way
- Construction + CEI
- Two-mile Buffer of Coast To Coast
- Two-mile Buffer of St. Johns River - to - Sea Loop

Item #	4398711	Tag for Regional Coast to Coast (C2C) Project
Description	N BEACH ST FROM 300 FEET SOUTH OF 2ND ST TO 2ND ST	
Phase, Dollar Amount and Fiscal Year	PE \$ 2,767,181 CON \$ 103,320 18 T	
Item #	4398711	Tag for Regional St. Johns River - to - Sea Loop Project
Description	N BEACH ST FROM 300 FEET SOUTH OF 2ND ST TO 2ND ST	
Phase, Dollar Amount and Fiscal Year	PE \$ 2,767,181 CON \$ 103,320 18 T	
Item #	4398711	Tag for Individual Project
Description	N BEACH ST FROM 300 FEET SOUTH OF 2ND ST TO 2ND ST	
Phase, Dollar Amount and Fiscal Year	PE \$ 2,767,181 CON \$ 103,320 18 T	

T = TLWR Funds  
O = Other Funds  
L = Local Funds

**Notes**

- (1) In the individual trail category, an allocation to one project phase is not a guarantee of commitment to allocations for future phases.
- (2) Project costs are subject to change.
- (3) Projects are color coded by the last funded phase.
- (4) Project phases with funds committed under the past Adopted Work Program are not depicted.

Source:  
Florida Department of Transportation  
- Systems Implementation Office

**Existing Conditions**

- SUN Trail Network
- Highways
- Planned SIS roads
- Water
- Railroads
- County Boundaries

50 25 0 50  
Miles

Document Path: C:\Projects\SUN Trail\Adopted2020\SUNTrailWPA\_Statewide.mxd



# Shared-Use Nonmotorized (SUN) Trail Program

Projects



**District 1**

**Adopted Work Program**

TIER NAME	FM# ITEMSEG	COUNTY NAME	FACILITY	FISCAL YEAR					TOTAL COST BY PHASE					TOTAL SUN TRAIL FUNDS	OTHER STATE, FEDERAL FUNDS	TOTAL LOCAL FUNDS	GRAND TOTAL		
				2021	2022	2023	2024	2025	FS	PDE	PE	ENV	ROW					CON	
IND	4402362	Lee	KISMET PKWY FROM NELSON RD TO DEL PRADO BLVD	\$0	\$0	\$0	\$0	\$6,196,959	\$0	\$0	\$0	\$0	\$0	\$0	\$6,196,959	\$6,196,959	\$0	\$0	\$6,196,959
IND	4436031	Lee	KISMET PKWY FROM DEL PRADO BLVD TO NE 24TH AVE	\$0	\$414,625	\$0	\$0	\$0	\$0	\$0	\$414,625	\$0	\$0	\$0	\$414,625	\$414,625	\$0	\$0	\$414,625
IND	4436051	Lee	BONITA-ESTERO RR TRAIL FROM BONITA BEACH RD TO ALICO RD	\$450,000	\$0	\$0	\$0	\$0	\$450,000	\$0	\$0	\$0	\$0	\$0	\$400,000	\$400,000	\$0	\$50,000	\$450,000
IND	4403582	Polk	TENOROC TRL SEGMENT 1 FROM LAKE CRAGO DR TO SR 33 AT OLD COMBEE ROAD	\$0	\$0	\$0	\$1,259,579	\$0	\$0	\$0	\$0	\$0	\$0	\$0	\$1,259,579	\$1,259,579	\$0	\$0	\$1,259,579
IND	4406031	Polk	FORT FRASER TRAIL EX FROM SR 540(WINTER LAKE RD) TO GLENDALE ST	\$0	\$0	\$0	\$2,000,000	\$0	\$0	\$0	\$0	\$0	\$0	\$0	\$2,000,000	\$2,000,000	\$0	\$0	\$2,000,000
IND	4436061	Polk	TENOROC TRAIL SEG 2-6 FROM E OF LAKE CRAGO PARK TO BRADDOCK RD	\$0	\$0	\$0	\$2,000,000	\$0	\$0	\$2,000,000	\$0	\$0	\$0	\$0	\$2,000,000	\$2,000,000	\$0	\$0	\$2,000,000
IND	4404481	Sarasota	LEGACY TRAIL OVER SR 72/CLARK RD AND OVER SR 758/BEE RIDGE RD.	\$200,000	\$0	\$7,500,000	\$0	\$0	\$0	\$0	\$200,000	\$0	\$0	\$0	\$7,500,000	\$7,700,000	\$0	\$0	\$7,700,000
<b>ANNUAL TOTALS</b>				<b>\$650,000</b>	<b>\$414,625</b>	<b>\$7,500,000</b>	<b>\$5,259,579</b>	<b>\$6,196,959</b>	<b>\$450,000</b>	<b>\$2,000,000</b>	<b>\$614,625</b>	<b>\$0</b>	<b>\$0</b>	<b>\$16,956,538</b>	<b>\$19,971,163</b>	<b>\$0</b>	<b>\$50,000</b>	<b>\$19,971,163</b>	

**Legend**

**Adopted Work Program**

**FY 2020/2021 - 2024/2025  
As of July 1, 2020**

FS= Feasibility Study; Phase Group - 1 and Phase Type - all but 1 and 9;  
PDE= Project Development Environmental; Phase Group - 2 and Phase Type - all but 1 and 9;  
PE= Preliminary Engineering; Phase Group - 3; Phase Type - all but 1 and 9;  
ENV= Environmental/Mitigation; Phase Group - C; Phase Type - all but 1 and 9;  
ROW= Right-of-Way; Phase Group - 4 and all Phase Type - all but 1 and 9;  
CON + CEI= Construction and Support (may include Grants); Phase Group - 5, 6 and Phase Type - all but 1 and 9.

**Notes**

- (1) Tiers: C2C - Coast to Coast; SJR2C - St. Johns River - to - Sea Loop; IND - Individual;
- (2) Project costs are subject to change;
- (3) In the IND category, an allocation to one project phase is not a guarantee of commitment to allocations for future phases;
- (4) SUN Trail allocations have "TLWR" as the fund code;
- (5) "Other State, Federal funds" are non-TLWR funds administered by FDOT;
- (6) "Local funds" are programmed when a portion of the project is being provided by a non-FDOT source; may include funds from a city, county, another state agency, etc.

## Shared-Use Nonmotorized (SUN) Trail Program

### District 1

State of Florida Department of Transportation  
Systems Implementation Office

#### Adopted Work Program

(FY 2020/2021 - 2024/2025)  
as of July 1, 2020

#### Legend

##### Project Phase

- █ Feasibility Study
- █ Project Development & Environment
- █ Preliminary Engineering
- █ Right of Way
- █ Construction + CEI

Item #	438871	Tag for Individual Project
Description	N BEACH ST FROM 150 FEET SOUTH OF 2ND ST TO 2ND ST	
Phase, Dollar Amount and Fiscal Year	PE \$ 2,747.18 CON \$ 103,320.18 T	T = TLWR Funds O = Other Funds L = Local Funds

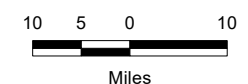
#### Notes

- (1) An allocation to one project phase is not a guarantee of commitment to allocations for future phases.
- (2) Project costs are subject to change.
- (3) Projects color codes by the last funded phase.
- (4) TLWR = SUN Trail Funds

Source:  
Florida Department of Transportation  
- Systems Implementation Office

#### Existing Conditions

-  SUN Trail Network
-  Water
-  Highways
-  Railroads
-  County Boundaries



4403582  
TENOROC TRL SEGMENT  
1 FROM LAKE CRAGO DR TO S  
R 33 AT OLD COMBEE ROAD  
CON \$ 1,259,579 24 T

4436061  
TENOROC TRAIL SEG 2-  
6 FROM E OF LAKE CRAGO PA  
RK TO BRADDOCK RD  
PDE \$ 2,000,000 24 T

4406031  
FORT FRASER TRAIL EX  
FROM SR 540 (WINTER LAKE  
RD) TO GLENDALE ST  
CON \$ 2,000,000 24 T

4404481  
LEGACY TRAIL OVER SR  
72/CLARK RD AND OVER SR  
758/BEE RIDGE RD.  
PE \$ 200,000 21  
CON \$ 7,500,000 23 T

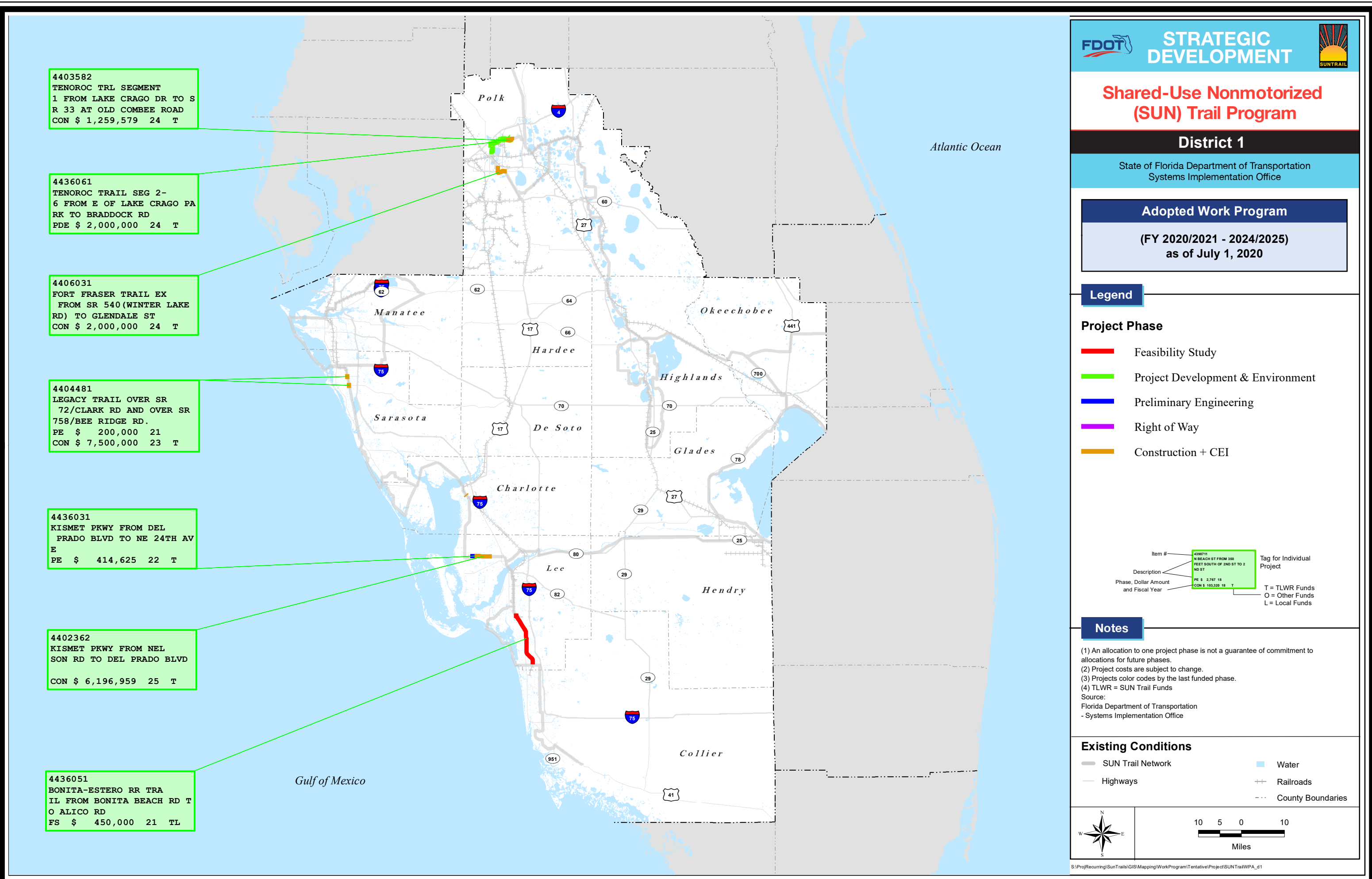
4436031  
KISMET PKWY FROM DEL  
PRADO BLVD TO NE 24TH AV  
E  
PE \$ 414,625 22 T

4402362  
KISMET PKWY FROM NEL  
SON RD TO DEL PRADO BLVD  
CON \$ 6,196,959 25 T

4436051  
BONITA-ESTERO RR TRA  
IL FROM BONITA BEACH RD T  
O ALICO RD  
FS \$ 450,000 21 TL

Gulf of Mexico

Atlantic Ocean





# Shared-Use Nonmotorized (SUN) Trail Program

Projects



## District 2

## Adopted Work Program

TIER NAME	FM# ITEMSEG	COUNTY NAME	FACILITY	FISCAL YEAR					TOTAL COST BY PHASE					TOTAL SUN TRAIL FUNDS	OTHER STATE, FEDERAL FUNDS	TOTAL LOCAL FUNDS	GRAND TOTAL	
				2021	2022	2023	2024	2025	FS	PDE	PE	ENV	ROW					CON
IND	4391751	Alachua	SR26 FROM NEWBERRY TO JONESVILLE	\$0	\$0	\$0	\$750,000	\$0	\$0	\$0	\$750,000	\$0	\$0	\$0	\$750,000	\$0	\$0	\$750,000
IND	4331713	Bradford	CR18 HAMPTON TRAIL (CR325 TO CR18) AND TRAILHEAD	\$0	\$967,998	\$0	\$0	\$0	\$0	\$0	\$0	\$0	\$0	\$967,998	\$967,998	\$0	\$0	\$967,998
IND	4331714	Bradford	CR18 FROM SE 36TH AVENUE TO CR325	\$1,817,318	\$0	\$0	\$0	\$0	\$0	\$0	\$0	\$0	\$0	\$1,817,318	\$1,817,318	\$0	\$0	\$1,817,318
IND	4331715	Bradford	CR18 FROM: SR100 TO: SE 36TH AVENUE	\$0	\$4,625,190	\$0	\$0	\$0	\$0	\$0	\$0	\$0	\$0	\$4,625,190	\$4,625,190	\$0	\$0	\$4,625,190
IND	4356191	Duval	SRA1A TIMUCUAN TRAIL FROM BIG TALBOT ISLAND TO LITTLE TALBOT ISLAND	\$24,614	\$0	\$0	\$0	\$0	\$0	\$0	\$0	\$0	\$0	\$24,614	\$24,614	\$0	\$0	\$24,614
IND	4373372	Nassau	AMELIA ISL PKWY TRL FROM: SRA1A(8TH ST) TO: BAILEY RD	\$0	\$0	\$0	\$686,976	\$0	\$0	\$0	\$0	\$0	\$0	\$686,976	\$686,976	\$0	\$0	\$686,976
IND	4428721	Suwannee	SUWANNEE RIVER GREENWAY FM CR248 TO ITCHETUCKNEE RIVER	\$3,150,000	\$0	\$0	\$0	\$0	\$0	\$0	\$0	\$0	\$0	\$3,150,000	\$3,150,000	\$0	\$0	\$3,150,000
<b>ANNUAL TOTALS</b>				<b>\$4,991,932</b>	<b>\$5,593,188</b>	<b>\$0</b>	<b>\$1,436,976</b>	<b>\$0</b>	<b>\$0</b>	<b>\$750,000</b>	<b>\$0</b>	<b>\$0</b>	<b>\$11,272,096</b>	<b>\$12,022,096</b>	<b>\$0</b>	<b>\$0</b>	<b>\$12,022,096</b>	

### Legend

#### Adopted Work Program

FY 2020/2021 - 2024/2025  
As of July 1, 2020

FS= Feasibility Study; Phase Group - 1 and Phase Type - all but 1 and 9;  
PDE= Project Development Environmental; Phase Group - 2 and Phase Type - all but 1 and 9;  
PE= Preliminary Engineering; Phase Group - 3; Phase Type - all but 1 and 9;  
ENV= Environmental/Mitigation; Phase Group - C; Phase Type - all but 1 and 9;  
ROW= Right-of-Way; Phase Group - 4 and all Phase Type - all but 1 and 9;  
CON + CEI= Construction and Support (may include Grants); Phase Group - 5, 6 and Phase Type - all but 1 and 9.

### Notes

- (1) Tiers: C2C - Coast to Coast; SJR2C - St. Johns River - to - Sea Loop; IND - Individual;
- (2) Project costs are subject to change;
- (3) In the IND category, an allocation to one project phase is not a guarantee of commitment to allocations for future phases;
- (4) SUN Trail allocations have "TLWR" as the fund code;
- (5) "Other State, Federal funds" are non-TLWR funds administered by FDOT;
- (6) "Local funds" are programmed when a portion of the project is being provided by a non-FDOT source; may include funds from a city, county, another state agency, etc.

**Shared-Use Nonmotorized (SUN) Trail Program**

**District 2**

State of Florida Department of Transportation  
Systems Implementation Office

**Adopted Work Program**

(FY 2020/2021 - 2024/2025)  
as of July 1, 2020

**Legend**

**Project Phase**

- Feasibility Study
- Project Development & Environment
- Preliminary Engineering
- Right of Way
- Construction + CEI
- Two miles Buffer of St. Johns River - to - Sea Loop

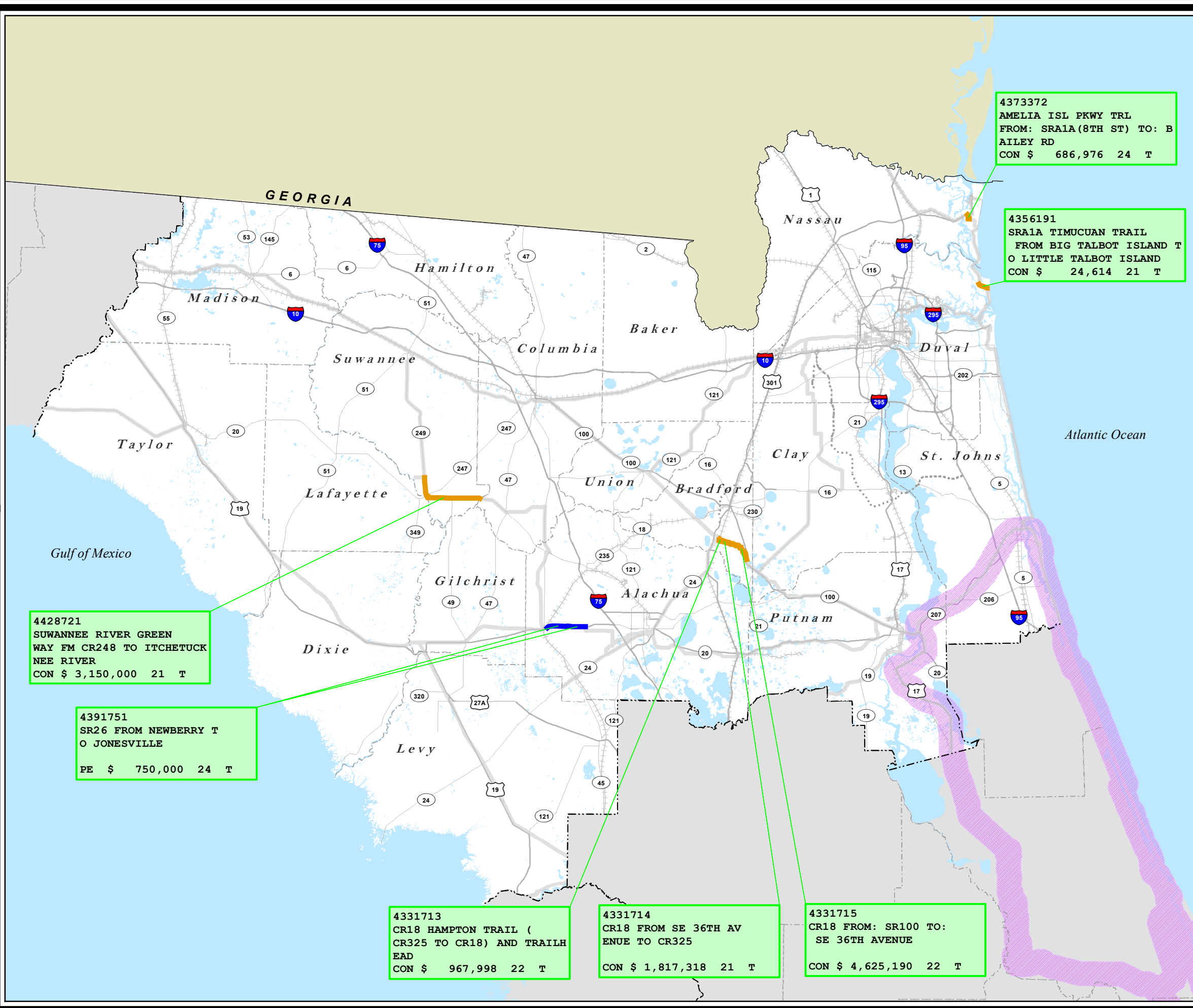
Item #	4398711	Tag for Individual Project
Description	N BEACH ST FROM 350 FEET SOUTH OF 2ND ST TO 2ND ST	
Phase, Dollar Amount and Fiscal Year	PE \$ 2,787,18 CON \$ 103,329 18 T	T = TLWR Funds O = Other Funds L = Local Funds

**Notes**

- (1) An allocation to one project phase is not a guarantee of commitment to allocations for future phases.
  - (2) Project costs are subject to change.
  - (3) Projects color codes by the last funded phase.
  - (4) TLWR = SUN Trail Funds
- Source:  
Florida Department of Transportation  
- Systems Implementation Office

**Existing Conditions**

- SUN Trail Network
- Highways
- Water
- Railroads
- County Boundaries



4373372  
AMELIA ISL PKWY TRL  
FROM: SRA1A (8TH ST) TO: B  
AILEY RD  
CON \$ 686,976 24 T

4356191  
SRA1A TIMUCUAN TRAIL  
FROM BIG TALBOT ISLAND T  
O LITTLE TALBOT ISLAND  
CON \$ 24,614 21 T

4428721  
SUWANNEE RIVER GREEN  
WAY FM CR248 TO ITCHETUCK  
NEE RIVER  
CON \$ 3,150,000 21 T

4391751  
SR26 FROM NEWBERRY T  
O JONESVILLE  
PE \$ 750,000 24 T

4331713  
CR18 HAMPTON TRAIL ( CR325 TO CR18) AND TRAILH  
EAD  
CON \$ 967,998 22 T

4331714  
CR18 FROM SE 36TH AV  
ENUE TO CR325  
CON \$ 1,817,318 21 T

4331715  
CR18 FROM: SR100 TO:  
SE 36TH AVENUE  
CON \$ 4,625,190 22 T



# Shared-Use Nonmotorized (SUN) Trail Program

Projects



## District 3

## Adopted Work Program

TIER NAME	FM # ITEMSEG	COUNTY NAME	FACILITY	FISCAL YEAR					TOTAL COST BY PHASE						TOTAL SUN TRAIL FUNDS	OTHER STATE, FEDERAL FUNDS	TOTAL LOCAL FUNDS	GRAND TOTAL	
				2021	2022	2023	2024	2025	FS	PDE	PE	ENV	ROW	CON					
IND	4399281	Bay	LYNN HAVEN RAILS TO TRAILS FROM SR 75 (US 231) TO E 10TH ST	\$0	\$6,149,344	\$0	\$0	\$0	\$0	\$0	\$0	\$0	\$0	\$0	\$6,149,344	\$4,583,402	\$0	\$1,565,942	\$6,149,344
IND	4399263	Wakulla	SR 30 (US 98) COASTAL HWY FROM S OF TOWER ROAD TO SR 61 (US 319)	\$9,824,530	\$0	\$0	\$0	\$0	\$0	\$0	\$0	\$0	\$740,296	\$9,084,234	\$8,578,370	\$1,246,160	\$0	\$9,824,530	
IND	4405501	Wakulla	SR 30 (US 98) FROM W OF SR 363 WOODVILLE HWY TO LIGHTHOUSE RD	\$0	\$0	\$0	\$3,529,818	\$0	\$0	\$0	\$0	\$0	\$0	\$3,529,818	\$3,529,818	\$0	\$0	\$3,529,818	
<b>ANNUAL TOTALS</b>				<b>\$9,824,530</b>	<b>\$6,149,344</b>	<b>\$0</b>	<b>\$3,529,818</b>	<b>\$0</b>	<b>\$0</b>	<b>\$0</b>	<b>\$0</b>	<b>\$0</b>	<b>\$740,296</b>	<b>\$18,763,396</b>	<b>\$16,691,590</b>	<b>\$1,246,160</b>	<b>\$1,565,942</b>	<b>\$17,937,750</b>	

### Legend

#### Adopted Work Program

FY 2020/2021 - 2024/2025  
As of July 1, 2020

FS= Feasibility Study; Phase Group - 1 and Phase Type - all but 1 and 9;  
PDE= Project Development Environmental; Phase Group - 2 and Phase Type - all but 1 and 9;  
PE= Preliminary Engineering; Phase Group - 3; Phase Type - all but 1 and 9;  
ENV= Environmental/Mitigation; Phase Group - C; Phase Type - all but 1 and 9;  
ROW= Right-of-Way; Phase Group - 4 and all Phase Type - all but 1 and 9;  
CON + CEI= Construction and Support (may include Grants); Phase Group - 5, 6 and Phase Type - all but 1 and 9.

### Notes

- (1) Tiers: C2C - Coast to Coast; SJR2C - St. Johns River - to - Sea Loop; IND - Individual;
- (2) Project costs are subject to change;
- (3) In the IND category, an allocation to one project phase is not a guarantee of commitment to allocations for future phases;
- (4) SUN Trail allocations have "TLWR" as the fund code;
- (5) "Other State, Federal funds" are non-TLWR funds administered by FDOT;
- (6) "Local funds" are programmed when a portion of the project is being provided by a non-FDOT source; may include funds from a city, county, another state agency, etc.



**Shared-Use Nonmotorized (SUN) Trail Program**

**District 3**

State of Florida Department of Transportation  
Systems Implementation Office

**Adopted Work Program**

(FY 2020/2021 - 2024/2025)  
as of July 1, 2020

**Legend**

**Project Phase**

- Feasibility Study
- Project Development & Environment
- Preliminary Engineering
- Right of Way
- Construction + CEI

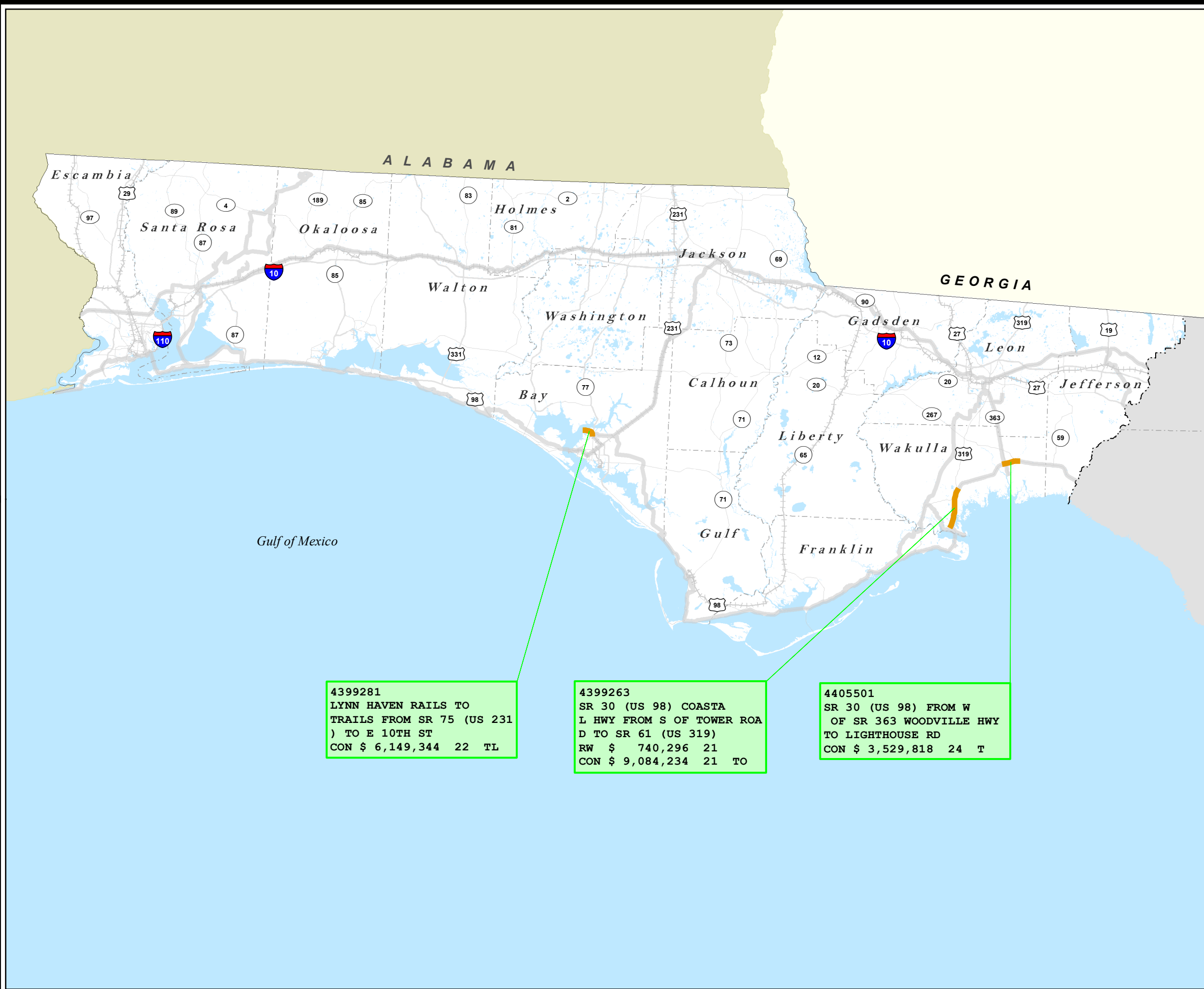
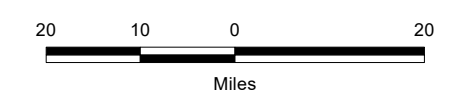
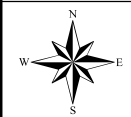
Item #	Description	Phase, Dollar Amount and Fiscal Year	Tag for Individual Project
4398711	N BEACH ST FROM 350 FEET SOUTH OF 2ND ST TO 2ND ST	PE \$ 2,767 18 CON \$ 103,329 18 T	T = TLWR Funds O = Other Funds L = Local Funds

**Notes**

- (1) An allocation to one project phase is not a guarantee of commitment to allocations for future phases.
  - (2) Project costs are subject to change.
  - (3) Projects color codes by the last funded phase.
  - (4) TLWR = SUN Trail Funds
- Source:  
Florida Department of Transportation  
- Systems Implementation Office

**Existing Conditions**

-  SUN Trail Network
-  Water
-  Highways
-  Railroads
-  County Boundaries



**4399281**  
LYNN HAVEN RAILS TO  
TRAILS FROM SR 75 (US 231  
) TO E 10TH ST  
CON \$ 6,149,344 22 TL

**4399263**  
SR 30 (US 98) COASTAL  
L HWY FROM S OF TOWER ROAD  
TO SR 61 (US 319)  
RW \$ 740,296 21  
CON \$ 9,084,234 21 TO

**4405501**  
SR 30 (US 98) FROM W  
OF SR 363 WOODVILLE HWY  
TO LIGHTHOUSE RD  
CON \$ 3,529,818 24 T



# Shared-Use Nonmotorized (SUN) Trail Program

Projects



**District 4**

**Adopted Work Program**

TIER NAME	FM# ITEMSEG	COUNTY NAME	FACILITY	FISCAL YEAR					TOTAL COST BY PHASE					TOTAL SUN TRAIL FUNDS	OTHER STATE, FEDERAL FUNDS	TOTAL LOCAL FUNDS	GRAND TOTAL		
				2021	2022	2023	2024	2025	FS	PDE	PE	ENV	ROW					CON	
IND	4435001	Martin	SE GOMEZ AVENUE FROM SE OSPREY STREET TO SE BRIDGE ROAD	\$100,000	\$0	\$0	\$0	\$0	\$0	\$100,000	\$0	\$0	\$0	\$0	\$0	\$100,000	\$0	\$0	\$100,000
IND	4435051	Martin	SR-5/US-1 FROM SE BRIDGE ROAD TO HOBE SOUND WILDLIFE REFUGE	\$200,000	\$0	\$0	\$0	\$0	\$0	\$200,000	\$0	\$0	\$0	\$0	\$0	\$200,000	\$0	\$0	\$200,000
IND	4399991	St. Lucie	SAVANNAS PRESERVE STATE PARK GAP WALTON RD. TO SAVANNAS RECREATION AREA	\$30,000	\$0	\$0	\$0	\$0	\$0	\$0	\$0	\$30,000	\$0	\$0	\$30,000	\$0	\$0	\$30,000	
IND	4399992	St. Lucie	SAVANNAS PRESERVE STATE PARK GAP FROM WALTON RD TO LENNARD RD	\$5,949,631	\$0	\$0	\$0	\$0	\$0	\$0	\$0	\$0	\$0	\$0	\$5,949,631	\$5,949,631	\$0	\$0	\$5,949,631
IND	4399993	St. Lucie	SAVANNAS PRESERVE STATE PARK FR LENNARD RD TO SAVANNAS RECREATION AREA	\$14,250	\$141,147	\$3,185,655	\$0	\$0	\$0	\$0	\$0	\$75,000	\$80,397	\$3,185,655	\$3,260,655	\$80,397	\$0	\$3,341,052	
IND	4400321	St. Lucie	FEC OVERPASS FROM SAVANNAS RECREATION AREA TO SOUTH OF SAVANNAH RD.	\$0	\$445,000	\$162,377	\$60,000	\$2,656,976	\$0	\$0	\$445,000	\$115,000	\$47,377	\$2,716,976	\$3,276,976	\$47,377	\$0	\$3,324,353	
IND	4435061	St. Lucie	SR-A1A FROM FT PIERCE INLET STATE PARK TO SLC/INDIAN RIVER COUNTY LINE	\$250,000	\$0	\$0	\$0	\$0	\$0	\$250,000	\$0	\$0	\$0	\$0	\$250,000	\$0	\$0	\$250,000	
<b>ANNUAL TOTALS</b>				<b>\$6,543,881</b>	<b>\$586,147</b>	<b>\$3,348,032</b>	<b>\$60,000</b>	<b>\$2,656,976</b>	<b>\$0</b>	<b>\$550,000</b>	<b>\$445,000</b>	<b>\$220,000</b>	<b>\$127,774</b>	<b>\$11,852,262</b>	<b>\$13,067,262</b>	<b>\$127,774</b>	<b>\$0</b>	<b>\$13,195,036</b>	

**Legend**

**Adopted Work Program**

**FY 2020/2021 - 2024/2025  
As of July 1, 2020**

FS= Feasibility Study; Phase Group - 1 and Phase Type - all but 1 and 9;  
PDE= Project Development Environmental; Phase Group - 2 and Phase Type - all but 1 and 9;  
PE= Preliminary Engineering; Phase Group - 3; Phase Type - all but 1 and 9;  
ENV= Environmental/Mitigation; Phase Group - C; Phase Type - all but 1 and 9;  
ROW= Right-of-Way; Phase Group - 4 and all Phase Type - all but 1 and 9;  
CON + CEI= Construction and Support (may include Grants); Phase Group - 5, 6 and Phase Type - all but 1 and 9.

**Notes**

- (1) Tiers: C2C - Coast to Coast; SJR2C - St. Johns River - to - Sea Loop; IND - Individual;
- (2) Project costs are subject to change;
- (3) In the IND category, an allocation to one project phase is not a guarantee of commitment to allocations for future phases;
- (4) SUN Trail allocations have "TLWR" as the fund code;
- (5) "Other State, Federal funds" are non-TLWR funds administered by FDOT;
- (6) "Local funds" are programmed when a portion of the project is being provided by a non-FDOT source; may include funds from a city, county, another state agency, etc.

Shared-Use Nonmotorized (SUN) Trail Program

District 4

State of Florida Department of Transportation  
Systems Implementation Office

Adopted Work Program  
(FY 2020/2021 - 2024/2025)  
as of July 1, 2020

Legend

- Project Phase**
- █ Feasibility Study
  - █ Project Development & Environment
  - █ Preliminary Engineering
  - █ Right of Way
  - █ Construction + CEI

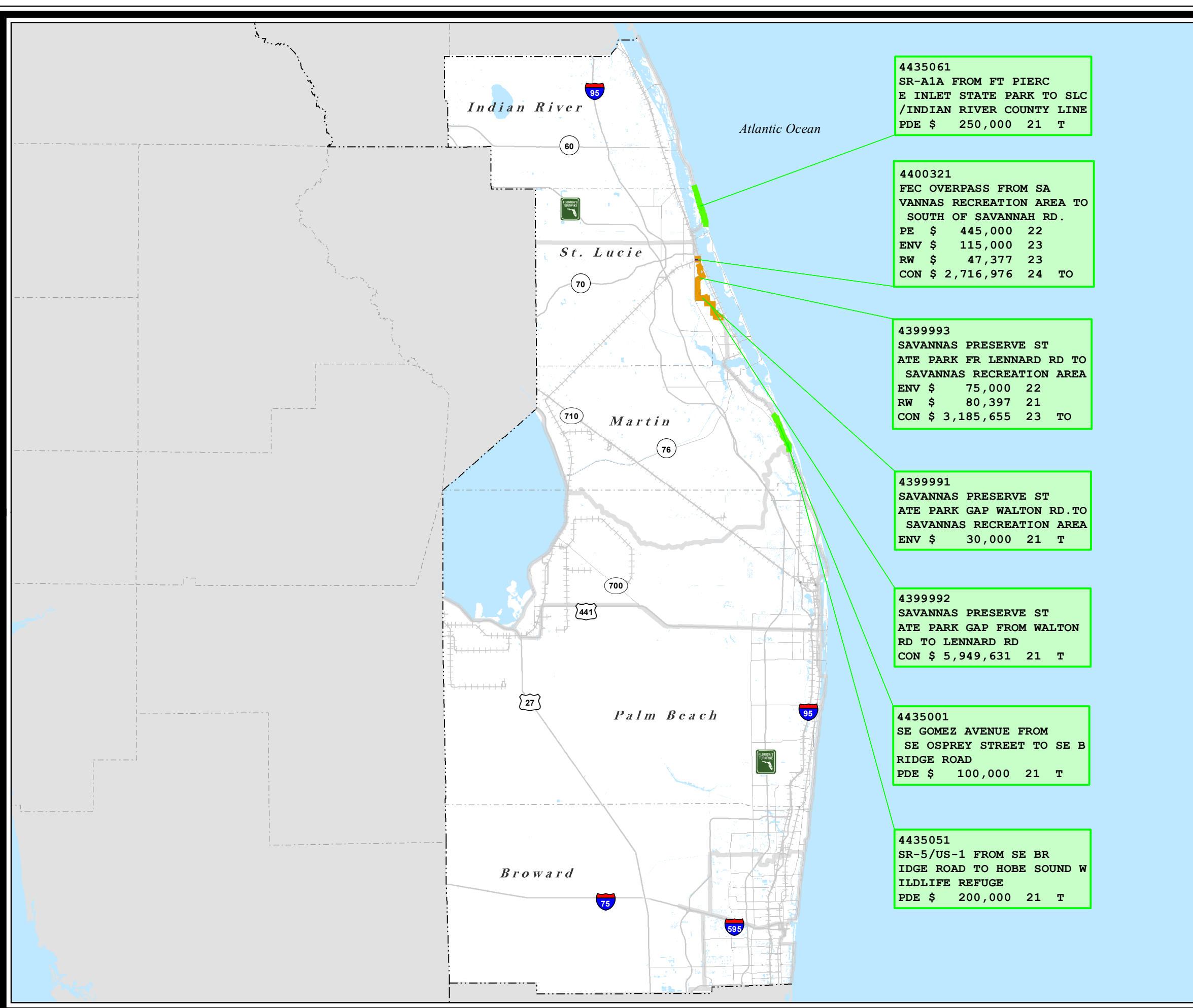
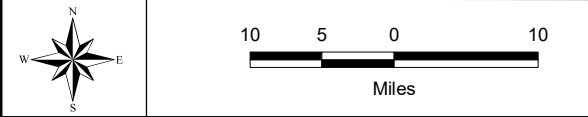
Item # Description Phase, Dollar Amount and Fiscal Year Tag for Individual Project  
 T = TLWR Funds  
 O = Other Funds  
 L = Local Funds

Notes

- (1) An allocation to one project phase is not a guarantee of commitment to allocations for future phases.
  - (2) Project costs are subject to change.
  - (3) Projects color codes by the last funded phase.
  - (4) TLWR = SUN Trail Funds
- Source:  
Florida Department of Transportation  
- Systems Implementation Office

Existing Conditions

- █ SUN Trail Network
- █ Water
- Highways
- ++ Railroads
- County Boundaries



4435061  
SR-A1A FROM FT PIERC  
E INLET STATE PARK TO SLC  
/INDIAN RIVER COUNTY LINE  
PDE \$ 250,000 21 T

4400321  
FEC OVERPASS FROM SA  
VANNAS RECREATION AREA TO  
SOUTH OF SAVANNAH RD.  
PE \$ 445,000 22  
ENV \$ 115,000 23  
RW \$ 47,377 23  
CON \$ 2,716,976 24 TO

4399993  
SAVANNAS PRESERVE ST  
ATE PARK FR LENNARD RD TO  
SAVANNAS RECREATION AREA  
ENV \$ 75,000 22  
RW \$ 80,397 21  
CON \$ 3,185,655 23 TO

4399991  
SAVANNAS PRESERVE ST  
ATE PARK GAP WALTON RD. TO  
SAVANNAS RECREATION AREA  
ENV \$ 30,000 21 T

4399992  
SAVANNAS PRESERVE ST  
ATE PARK GAP FROM WALTON  
RD TO LENNARD RD  
CON \$ 5,949,631 21 T

4435001  
SE GOMEZ AVENUE FROM  
SE OSPREY STREET TO SE B  
RIDGE ROAD  
PDE \$ 100,000 21 T

4435051  
SR-5/US-1 FROM SE BR  
IDGE ROAD TO HOBE SOUND W  
ILDLIFE REFUGE  
PDE \$ 200,000 21 T



# Shared-Use Nonmotorized (SUN) Trail Program

Projects



District 5

Adopted Work Program

TIER NAME	FM# ITEMSEG	COUNTY NAME	FACILITY	FISCAL YEAR					TOTAL COST BY PHASE					TOTAL SUN TRAIL FUNDS	OTHER STATE, FEDERAL FUNDS	TOTAL LOCAL FUNDS	GRAND TOTAL		
				2021	2022	2023	2024	2025	FS	PDE	PE	ENV	ROW					CON	
SJR2C	4390396	Volusia	SPR TO SPR TRAIL PHASE 3C W HIGHBANKS RD TO DEBARY PLANTATATION BLVD	\$0	\$0	\$0	\$1,173,000	\$0	\$0	\$0	\$0	\$0	\$0	\$0	\$1,173,000	\$1,173,000	\$0	\$0	\$1,173,000
SJR2C	4398622	Volusia	TITUSVILLE TO EDGEWATER TRAIL FROM ROBERTS RD TO DALE AVE	\$2,349,000	\$0	\$6,891,281	\$0	\$0	\$0	\$0	\$2,349,000	\$0	\$0	\$0	\$6,891,281	\$8,238,944	\$1,001,337	\$0	\$9,240,281
SJR2C	4398641	Volusia	ST JOHNS RIVER TO SEA LOOP MYRTLE AVE FROM 10TH ST TO SR 44/LYTLT AVE	\$853,599	\$285,350	\$106,000	\$2,045,043	\$0	\$0	\$0	\$77,500	\$0	\$1,167,449	\$2,045,043	\$3,158,893	\$131,099	\$0	\$0	\$3,289,992
SJR2C	4398653	Volusia	SJR2C LOOP TRAIL (SPRUCE CREEK RD) FROM S OF SELIN CIR TO HERBERT ST	\$200,000	\$0	\$0	\$0	\$0	\$0	\$0	\$200,000	\$0	\$0	\$0	\$200,000	\$0	\$0	\$0	\$200,000
SJR2C	4398654	Volusia	SJR2C LOOP TRAIL FROM SAULS ST/MCDONALD RD TO CARMEN DR/RIDGE BLVD	\$1,100,000	\$0	\$0	\$0	\$0	\$0	\$0	\$1,100,000	\$0	\$0	\$0	\$1,100,000	\$0	\$0	\$0	\$1,100,000
SJR2C	4398741	Volusia	ST JOHNS RIVER TO SEA LOOP FROM LAKE BERESFORD PARK TO GRAND AVE	\$0	\$0	\$9,086,428	\$0	\$0	\$0	\$0	\$0	\$0	\$0	\$9,086,428	\$7,935,791	\$1,150,637	\$0	\$9,086,428	
<b>ANNUAL TOTALS</b>				<b>\$4,502,599</b>	<b>\$285,350</b>	<b>\$16,083,709</b>	<b>\$3,218,043</b>	<b>\$0</b>	<b>\$0</b>	<b>\$0</b>	<b>\$3,726,500</b>	<b>\$0</b>	<b>\$1,167,449</b>	<b>\$19,195,752</b>	<b>\$21,806,628</b>	<b>\$2,283,073</b>	<b>\$0</b>	<b>\$24,089,701</b>	

Legend

Adopted Work Program

FY 2020/2021 - 2024/2025  
As of July 1, 2020

FS= Feasibility Study; Phase Group - 1 and Phase Type - all but 1 and 9;  
PDE= Project Development Environmental; Phase Group - 2 and Phase Type - all but 1 and 9;  
PE= Preliminary Engineering; Phase Group - 3; Phase Type - all but 1 and 9;  
ENV= Environmental/Mitigation; Phase Group - C; Phase Type - all but 1 and 9;  
ROW= Right-of-Way; Phase Group - 4 and all Phase Type - all but 1 and 9;  
CON + CEI= Construction and Support (may include Grants); Phase Group - 5, 6 and Phase Type - all but 1 and 9.

Notes

- (1) Tiers: C2C - Coast to Coast; SJR2C - St. Johns River - to - Sea Loop; IND - Individual;
- (2) Project costs are subject to change;
- (3) In the IND category, an allocation to one project phase is not a guarantee of commitment to allocations for future phases;
- (4) SUN Trail allocations have "TLWR" as the fund code;
- (5) "Other State, Federal funds" are non-TLWR funds administered by FDOT;
- (6) "Local funds" are programmed when a portion of the project is being provided by a non-FDOT source; may include funds from a city, county, another state agency, etc.

**Shared-Use Nonmotorized (SUN) Trail Program**

**District 5**

State of Florida Department of Transportation  
Systems Implementation Office

**Adopted Work Program**  
(FY 2020/2021 - 2024/2025)  
as of July 1, 2020

**Legend**

- Project Phase**
- █ Feasibility Study
  - █ Project Development & Environment
  - █ Preliminary Engineering
  - █ Right of Way
  - █ Construction + CEI
  - Two miles Buffer of Coast To Coast
  - Two miles Buffer of St. Johns River - to - Sea Loop

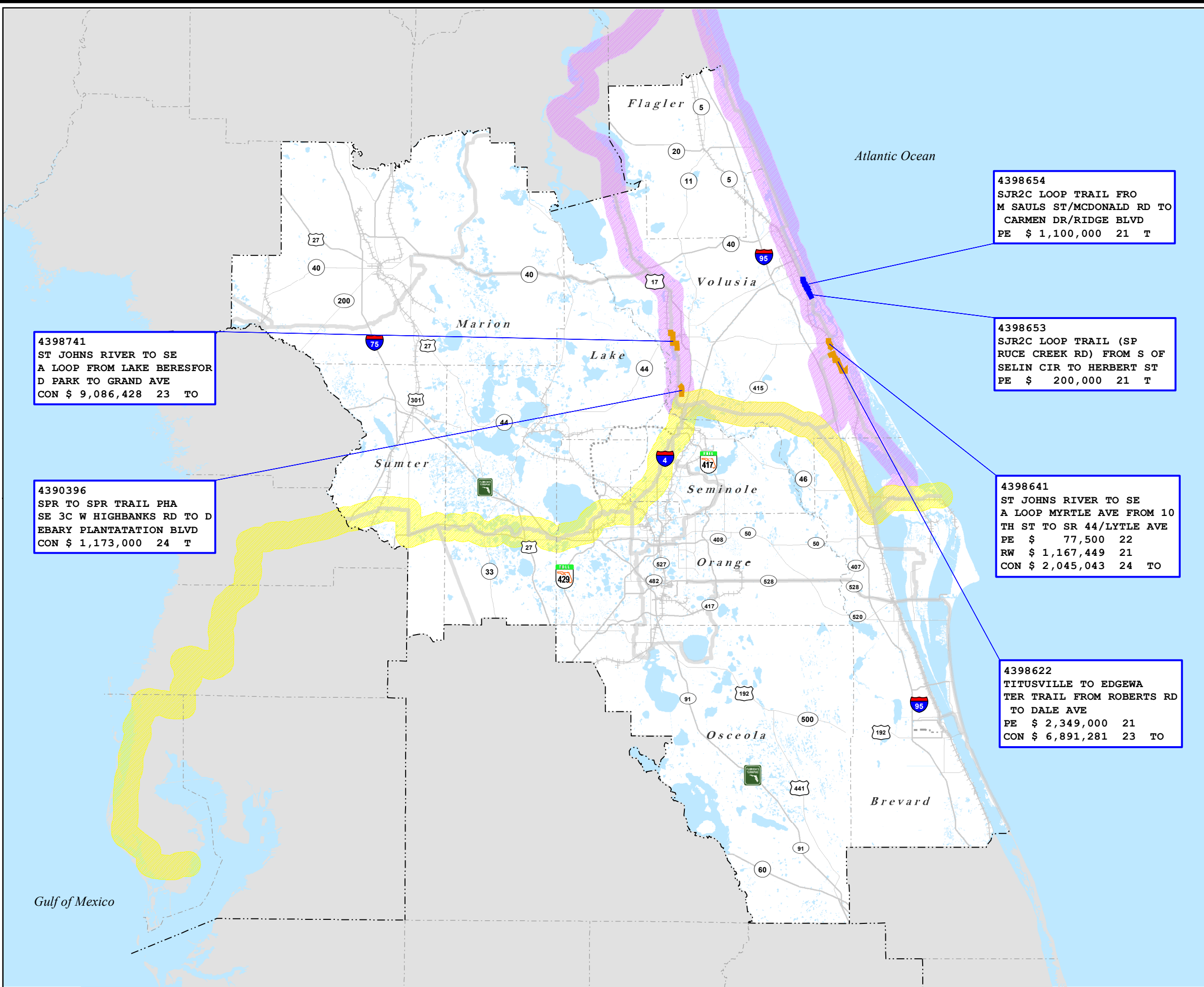
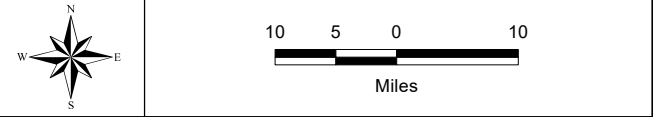
Item #	4398711	Tag for Regional St. Johns River - to - Sea Loop Project
Description	N BEACH ST FROM 350 FEET SOUTH OF 2ND ST TO 2 ND ST	
Phase, Dollar Amount and Fiscal Year	PE \$ 2,787,181 CON \$ 103,320 18 T	

**Notes**

- (1) An allocation to one project phase is not a guarantee of commitment to allocations for future phases.
  - (2) Project costs are subject to change.
  - (3) Projects color codes by the last funded phase.
  - (4) TLWR = SUN Trail Funds
- Source:  
Florida Department of Transportation  
- Systems Implementation Office

**Existing Conditions**

- SUN Trail Network
- Highways
- Water
- Railroads
- County Boundaries



**4398741**  
ST JOHNS RIVER TO SE  
A LOOP FROM LAKE BERESFOR  
D PARK TO GRAND AVE  
CON \$ 9,086,428 23 TO

**4390396**  
SPR TO SPR TRAIL PHA  
SE 3C W HIGHBANKS RD TO D  
EBARY PLANTATATION BLVD  
CON \$ 1,173,000 24 T

**4398654**  
SJR2C LOOP TRAIL FRO  
M SAULS ST/MCDONALD RD TO  
CARMEN DR/RIDGE BLVD  
PE \$ 1,100,000 21 T

**4398653**  
SJR2C LOOP TRAIL (SP  
RUCÉ CREEK RD) FROM S OF  
SELIN CIR TO HERBERT ST  
PE \$ 200,000 21 T

**4398641**  
ST JOHNS RIVER TO SE  
A LOOP MYRTLE AVE FROM 10  
TH ST TO SR 44/LYTLÉ AVE  
PE \$ 77,500 22  
RW \$ 1,167,449 21  
CON \$ 2,045,043 24 TO

**4398622**  
TITUSVILLE TO EDGEWA  
TER TRAIL FROM ROBERTS RD  
TO DALE AVE  
PE \$ 2,349,000 21  
CON \$ 6,891,281 23 TO



# Shared-Use Nonmotorized (SUN) Trail Program

Projects



**District 6**

**Adopted Work Program**

TIER NAME	FM # ITEMSEG	COUNTY NAME	FACILITY	FISCAL YEAR					TOTAL COST BY PHASE						TOTAL SUN TRAIL FUNDS	OTHER STATE, FEDERAL FUNDS	TOTAL LOCAL FUNDS	GRAND TOTAL	
				2021	2022	2023	2024	2025	FS	PDE	PE	ENV	ROW	CON					
IND	4166604	Miami-Dade	MIAMI DADE COUNTY - LUDLAM TRAIL FROM NW 7 STREET TO SW 40 STREET	\$0	\$0	\$0	\$8,000,000	\$0	\$0	\$0	\$0	\$0	\$0	\$0	\$8,000,000	\$8,000,000	\$0	\$0	\$8,000,000
IND	4398981	Miami-Dade	BISCAYNE TRAIL SEGMENT D PHASE II FROM SW 117 AVE TO SW 137 AVE	\$0	\$0	\$0	\$1,519,597	\$0	\$0	\$0	\$0	\$0	\$0	\$0	\$1,519,597	\$1,254,731	\$0	\$264,866	\$1,519,597
IND	4409092	Monroe	SR 5/US 1 FROM UPPER SUGARLOAF KEY TO LOWER SUGARLOAF KEY	\$0	\$0	\$0	\$0	\$10,000,000	\$0	\$0	\$0	\$0	\$0	\$0	\$10,000,000	\$10,000,000	\$0	\$0	\$10,000,000
<b>ANNUAL TOTALS</b>				<b>\$0</b>	<b>\$0</b>	<b>\$0</b>	<b>\$9,519,597</b>	<b>\$10,000,000</b>	<b>\$0</b>	<b>\$0</b>	<b>\$0</b>	<b>\$0</b>	<b>\$0</b>	<b>\$0</b>	<b>\$19,519,597</b>	<b>\$19,254,731</b>	<b>\$0</b>	<b>\$264,866</b>	<b>\$19,254,731</b>

**Legend**

**Adopted Work Program**

**FY 2020/2021 - 2024/2025  
As of July 1, 2020**

FS= Feasibility Study; Phase Group - 1 and Phase Type - all but 1 and 9;  
PDE= Project Development Environmental; Phase Group - 2 and Phase Type - all but 1 and 9;  
PE= Preliminary Engineering; Phase Group - 3; Phase Type - all but 1 and 9;  
ENV= Environmental/Mitigation; Phase Group - C; Phase Type - all but 1 and 9;  
ROW= Right-of-Way; Phase Group - 4 and all Phase Type - all but 1 and 9;  
CON + CEI= Construction and Support (may include Grants); Phase Group - 5, 6 and Phase Type - all but 1 and 9.

**Notes**

- (1) Tiers: C2C - Coast to Coast; SJR2C - St. Johns River - to - Sea Loop; IND - Individual;
- (2) Project costs are subject to change;
- (3) In the IND category, an allocation to one project phase is not a guarantee of commitment to allocations for future phases;
- (4) SUN Trail allocations have "TLWR" as the fund code;
- (5) "Other State, Federal funds" are non-TLWR funds administered by FDOT;
- (6) "Local funds" are programmed when a portion of the project is being provided by a non-FDOT source; may include funds from a city, county, another state agency, etc.



# STRATEGIC DEVELOPMENT



## Shared-Use Nonmotorized (SUN) Trail Program

### District 6

State of Florida Department of Transportation  
Systems Implementation Office

### Adopted Work Program

(FY 2020/2021 - 2024/2025)  
as of July 1, 2020

### Legend

#### Project Phase

- █ Feasibility Study
- █ Project Development & Environment
- █ Preliminary Engineering
- █ Right of Way
- █ Construction + CEI

Item #	4398711	Tag for Individual Project
Description	N BEACH ST FROM 350 FEET SOUTH OF 2ND ST TO 2ND ST	
Phase, Dollar Amount and Fiscal Year	PE \$ 2,787.18 CON \$ 103,320.18 T	T = TLWR Funds O = Other Funds L = Local Funds

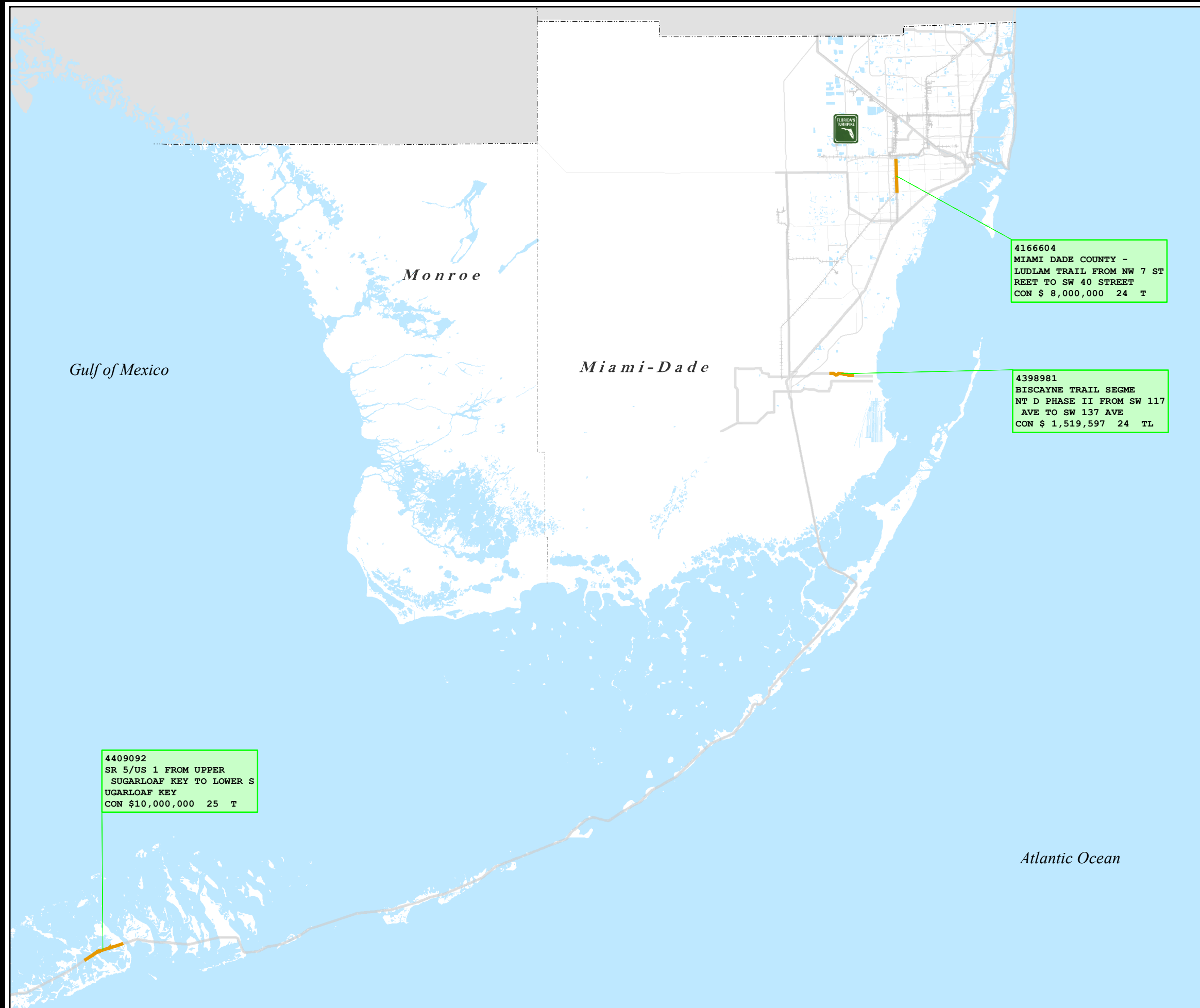
### Notes

- (1) In the individual trail category, an allocation to one project phase is not a guarantee of commitment to allocations for future phases.
- (2) Project costs are subject to change.
- (3) Projects are color coded by the last funded phase.
- (4) Project phases with funds committed under the past Adopted Work Program are not depicted.
- (5) As illustrated, the SUN Trail network is aligned to the adopted Florida Greenways and Trails System Priority Land Trail Network as of December 31, 2017.

Source:  
Florida Department of Transportation  
- Systems Implementation Office

#### Existing Conditions

- SUN Trail Network
- Water
- Highways
- Railroads
- County Boundaries



4409092  
SR 5/US 1 FROM UPPER  
SUGARLOAF KEY TO LOWER S  
UGARLOAF KEY  
CON \$10,000,000 25 T

4166604  
MIAMI DADE COUNTY -  
LUDLAM TRAIL FROM NW 7 ST  
REET TO SW 40 STREET  
CON \$ 8,000,000 24 T

4398981  
BISCAYNE TRAIL SEGME  
NT D PHASE II FROM SW 117  
AVE TO SW 137 AVE  
CON \$ 1,519,597 24 TL



# Shared-Use Nonmotorized (SUN) Trail Program

Projects



District 7

Adopted Work Program

TIER NAME	FM# ITEMSEG	COUNTY NAME	FACILITY	FISCAL YEAR					TOTAL COST BY PHASE					TOTAL SUN TRAIL FUNDS	OTHER STATE, FEDERAL FUNDS	TOTAL LOCAL FUNDS	GRAND TOTAL		
				2021	2022	2023	2024	2025	FS	PDE	PE	ENV	ROW					CON	
C2C	4372642	Hernando	GOOD NEIGHBOR TRAIL GAP FR W OF SR 50/CORTEZ BLVD TO GOOD NEIGHBOR TR	\$3,200,800	\$12,629,278	\$0	\$0	\$0	\$0	\$0	\$0	\$0	\$0	\$3,200,800	\$12,629,278	\$15,726,955	\$103,123	\$0	\$15,830,078
IND	4433551	Hillsborough	SOUTH COAST GREENWAY-BIG BEND FR W WATERSET BLVD TO COVINGTON GARDENS	\$1,208,659	\$0	\$0	\$0	\$0	\$0	\$0	\$1,208,659	\$0	\$0	\$0	\$0	\$1,208,659	\$0	\$0	\$1,208,659
IND	4402651	Pasco	ORANGE BELT TRAIL - SEG 1 FROM E OF LITTLE RD TO SR 54	\$0	\$0	\$0	\$0	\$3,877,366	\$0	\$0	\$0	\$0	\$0	\$0	\$3,877,366	\$3,877,366	\$0	\$0	\$3,877,366
IND	4400933	Pinellas	PINELLAS TRAIL LOOP - PH 4 FROM 126TH AVE N TO ULMERTON RD	\$0	\$293,627	\$0	\$2,180,830	\$0	\$0	\$0	\$293,627	\$0	\$0	\$0	\$2,180,830	\$2,474,457	\$0	\$0	\$2,474,457
<b>ANNUAL TOTALS</b>				<b>\$4,409,459</b>	<b>\$12,922,905</b>	<b>\$0</b>	<b>\$2,180,830</b>	<b>\$3,877,366</b>	<b>\$0</b>	<b>\$0</b>	<b>\$1,502,286</b>	<b>\$0</b>	<b>\$0</b>	<b>\$3,200,800</b>	<b>\$18,687,474</b>	<b>\$23,287,437</b>	<b>\$103,123</b>	<b>\$0</b>	<b>\$23,390,560</b>

Legend

Adopted Work Program

FY 2020/2021 - 2024/2025  
As of July 1, 2020

FS= Feasibility Study; Phase Group - 1 and Phase Type - all but 1 and 9;  
PDE= Project Development Environmental; Phase Group - 2 and Phase Type - all but 1 and 9;  
PE= Preliminary Engineering; Phase Group - 3; Phase Type - all but 1 and 9;  
ENV= Environmental/Mitigation; Phase Group - C; Phase Type - all but 1 and 9;  
ROW= Right-of-Way; Phase Group - 4 and all Phase Type - all but 1 and 9;  
CON + CEI= Construction and Support (may include Grants); Phase Group - 5, 6 and Phase Type - all but 1 and 9.

Notes

- (1) Tiers: C2C - Coast to Coast; SJR2C - St. Johns River - to - Sea Loop; IND - Individual;
- (2) Project costs are subject to change;
- (3) In the IND category, an allocation to one project phase is not a guarantee of commitment to allocations for future phases;
- (4) SUN Trail allocations have "TLWR" as the fund code;
- (5) "Other State, Federal funds" are non-TLWR funds administered by FDOT;
- (6) "Local funds" are programmed when a portion of the project is being provided by a non-FDOT source; may include funds from a city, county, another state agency, etc.



Shared-Use Nonmotorized (SUN) Trail Program

District 7

State of Florida Department of Transportation Systems Implementation Office

Adopted Work Program

(FY 2020/2021 - 2024/2025) as of July 1, 2020

Legend

Project Phase

- Feasibility Study
- Project Development & Environment
- Preliminary Engineering
- Right of Way
- Construction + CEI
- Two miles Buffer of Coast To Coast

Item #	4398711	Tag for Regional Coast to Coast (C2C) Project
Description	N BEACH ST FROM 350 FEET SOUTH OF 2ND ST TO 2 ND ST	
Phase, Dollar Amount and Fiscal Year	PE \$ 2,767,18 CON \$ 163,320 18 T	
Item #	4398711	Tag for Individual Project
Description	N BEACH ST FROM 350 FEET SOUTH OF 2ND ST TO 2 ND ST	
Phase, Dollar Amount and Fiscal Year	PE \$ 2,767,18 CON \$ 163,320 18 T	

T = TLWR Funds  
O = Other Funds  
L = Local Funds

Notes

- (1) An allocation to one project phase is not a guarantee of commitment to allocations for future phases.
  - (2) Project costs are subject to change.
  - (3) Projects color codes by the last funded phase.
  - (4) TLWR = SUN Trail Funds
- Source:  
Florida Department of Transportation  
- Systems Implementation Office

Existing Conditions

- SUN Trail Network
- Highways
- Water
- Railroads
- County Boundaries

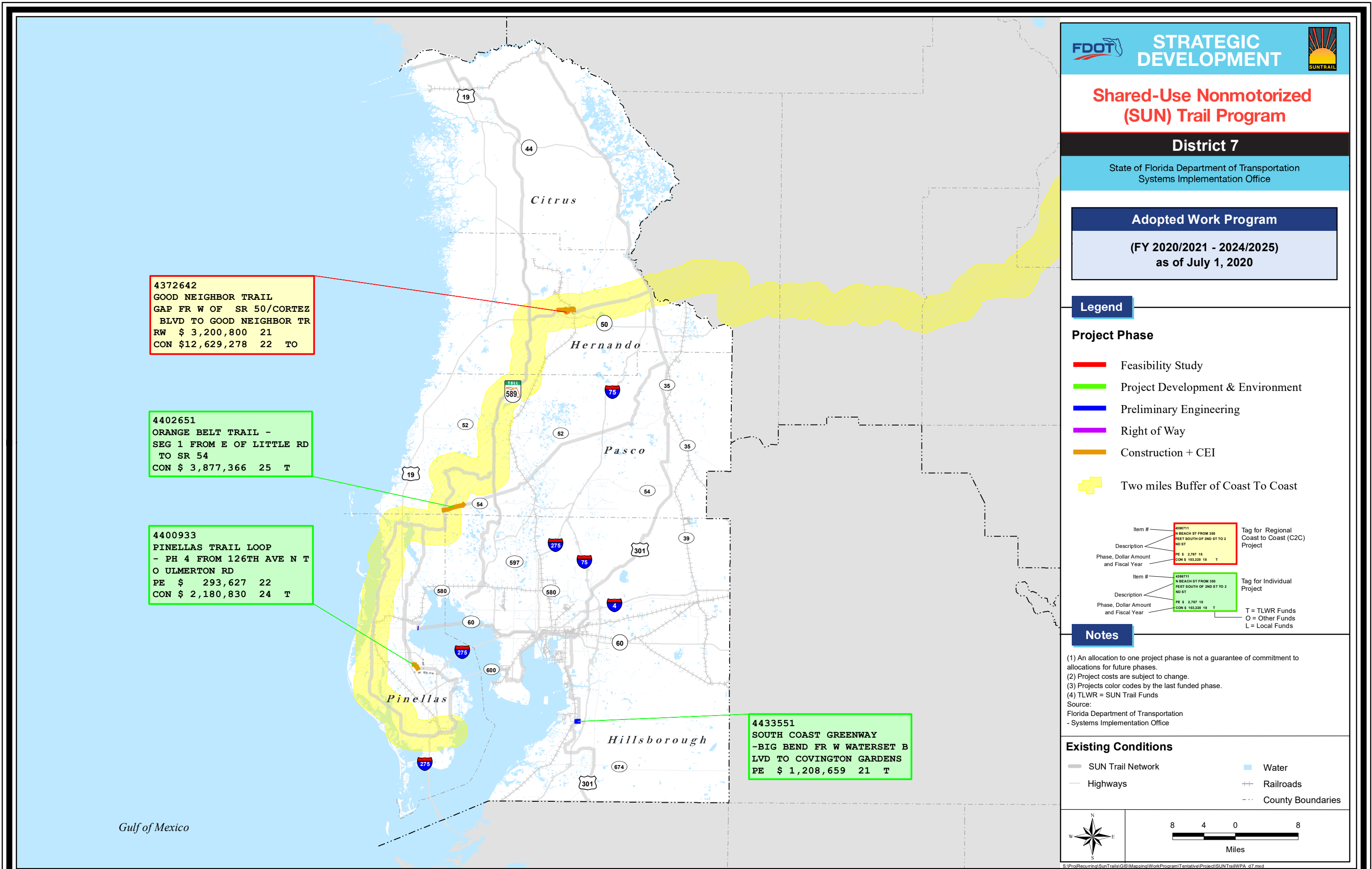


4372642  
GOOD NEIGHBOR TRAIL  
GAP FR W OF SR 50/CORTEZ  
BLVD TO GOOD NEIGHBOR TR  
RW \$ 3,200,800 21  
CON \$12,629,278 22 TO

4402651  
ORANGE BELT TRAIL -  
SEG 1 FROM E OF LITTLE RD  
TO SR 54  
CON \$ 3,877,366 25 T

4400933  
PINELLAS TRAIL LOOP  
- PH 4 FROM 126TH AVE N T  
O ULMERTON RD  
PE \$ 293,627 22  
CON \$ 2,180,830 24 T

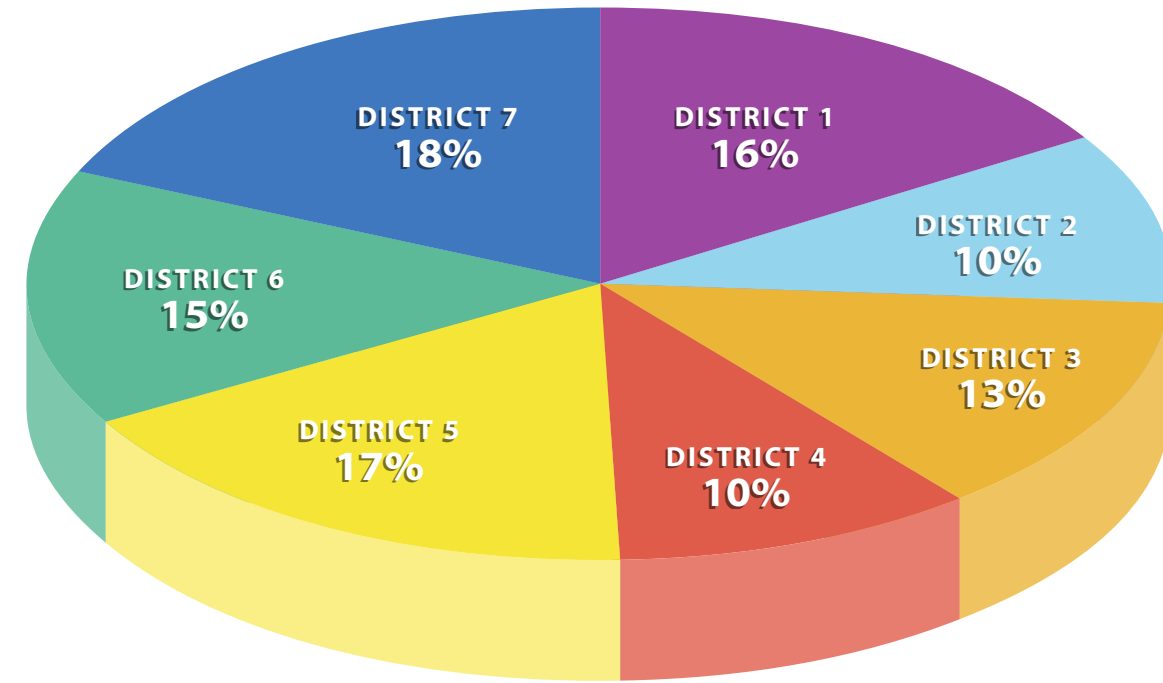
4433551  
SOUTH COAST GREENWAY  
-BIG BEND FR W WATERSET B  
LVD TO COVINGTON GARDENS  
PE \$ 1,208,659 21 T



Gulf of Mexico

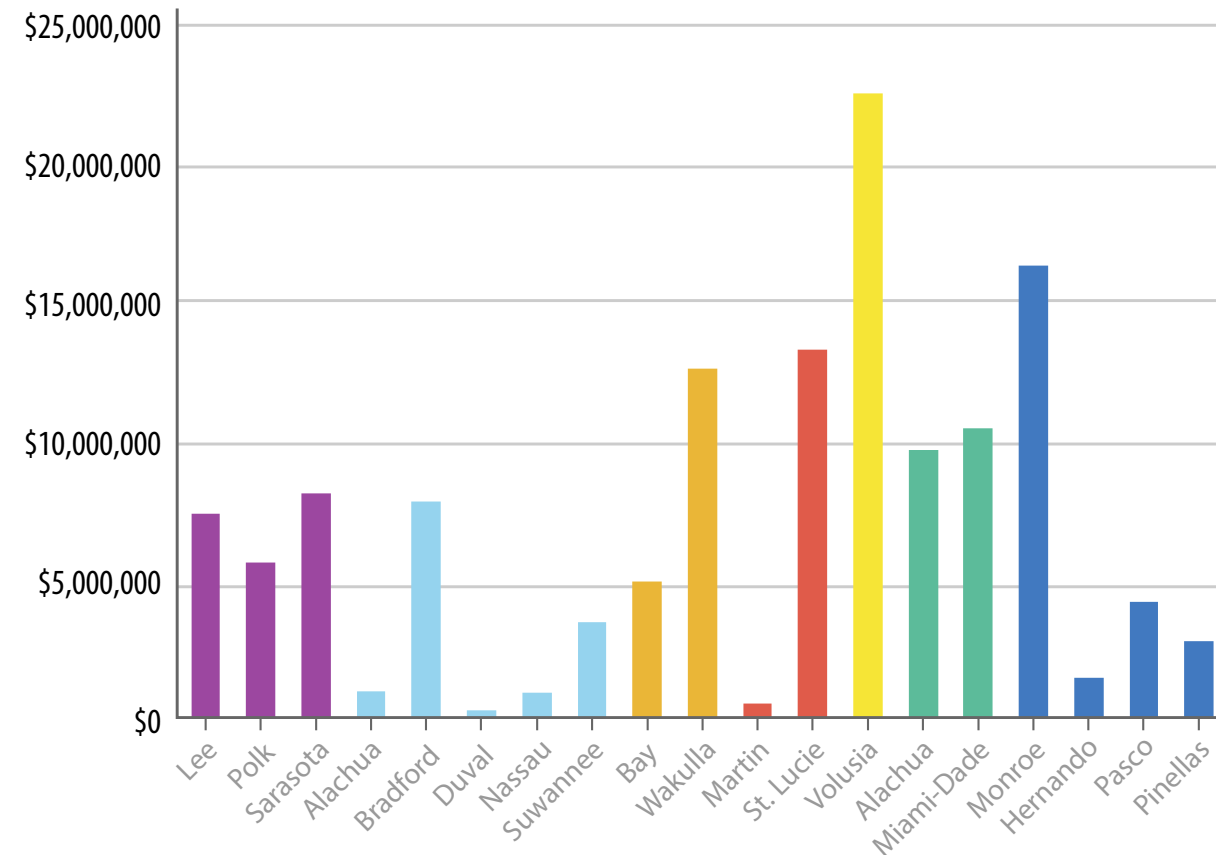
## Funding by District

DISTRICT	COST	TOTAL %
1	\$19,971,163	16%
2	\$12,022,096	10%
3	\$16,691,590	13%
4	\$13,067,262	10%
5	\$21,806,628	17%
6	\$19,254,731	15%
7	\$23,287,437	18%
<b>TOTAL</b>	<b>\$126,100,907</b>	<b>100%</b>

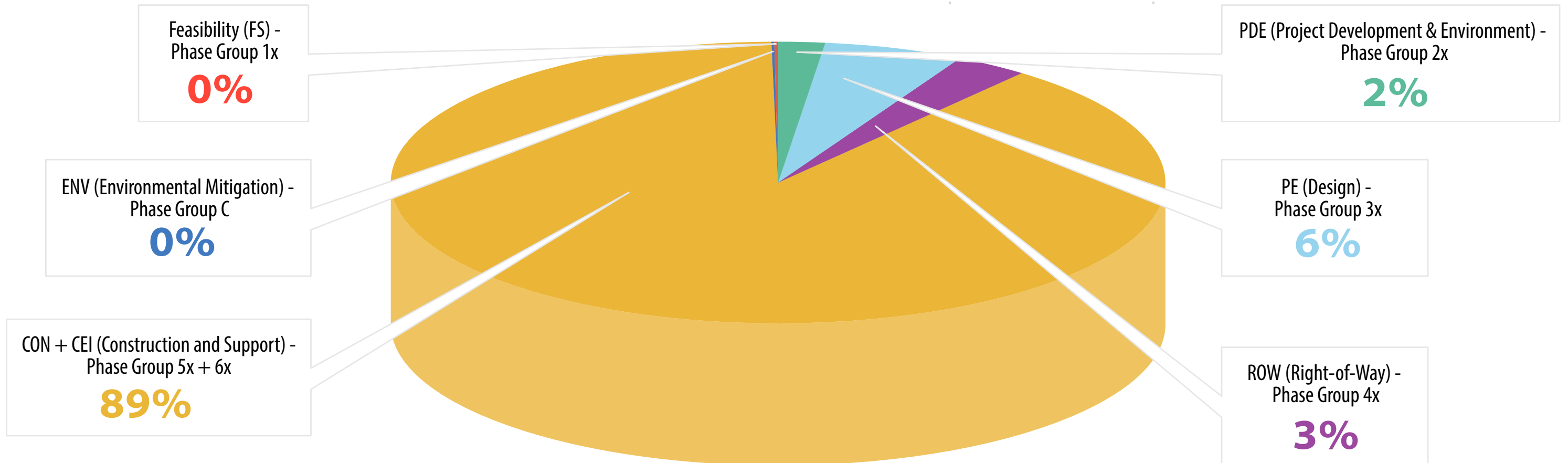


## Funding by County

DISTRICT	COUNTY NAME	COST	TOTAL %
1	Lee	\$7,011,584	6%
1	Polk	\$5,259,579	4%
1	Sarasota	\$7,700,000	6%
2	Alachua	\$750,000	1%
2	Bradford	\$7,410,506	6%
2	Duval	\$24,614	0%
2	Nassau	\$686,976	1%
2	Suwannee	\$3,150,000	2%
3	Bay	\$4,583,402	4%
3	Wakulla	\$12,108,188	10%
4	Martin	\$300,000	0%
4	St. Lucie	\$12,767,262	10%
5	Volusia	\$21,806,628	17%
6	Miami-Dade	\$9,254,731	7%
6	Monroe	\$10,000,000	8%
7	Hernando	\$15,726,955	12%
7	Hillsborough	\$1,208,659	1%
7	Pasco	\$3,877,366	3%
7	Pinellas	\$2,474,457	2%
<b>TOTAL</b>		<b>\$126,100,907</b>	<b>100%</b>



Feasibility (FS) - Phase Group 1x	\$400,000	0%
PDE (Project Development & Environment) - Phase Group 2x	\$2,550,000	2%
PE (Design) - Phase Group 3x	\$6,960,911	6%
ROW (Right-of-Way) - Phase Group 4x	\$4,314,650	3%
CON + CEI (Construction and Support) - Phase Group 5x + 6x	\$111,655,346	89%
ENV (Environmental Mitigation) - Phase Group C	\$220,000	0%
<b>TOTAL</b>	<b>\$126,100,907</b>	<b>100%</b>





**State of Florida Department of Transportation**

605 Suwannee Street • Tallahassee, FL 32399

[www.dot.state.fl.us](http://www.dot.state.fl.us)

