

# Shared Use Nonmotorized (SUN) Trail Program

**Adopted Work Program**  
Detailed Map and Table Set



Courtney Campbell Causeway Trail

Regional Trail Systems and Individual Trail Projects

FY 2016/2017







# SUN Trail Shared Use Non-Motorized Trail Program

Projects



Statewide

Adopted Work Program

Tier	FM#	District	County Name	Trail Name	Segment	COST	PHASE
C2C	4361873	5	Brevard	Space Coast Trail: Titusville	East end of Max Brewer Bridge to Merritt Island Refuge	\$300,000	PE
C2C	4358931	5	Lake	South Lake Trail Phase 4	Van Fleet State Trail to Villa City Rd. (CR 565)	\$700,000	PE
C2C	4364331	5	Orange	Orange Co. Gap Segment 2	N Hiawassee Rd. to N of SR 414 on SR 441/Clarcona-Ocoee Connector/Pine Hills Ph. 3	\$2,000,000	PE
C2C	4364341	5	Volusia	Spring to Spring Trail: US 17/92 Bridge	Wayside Park to Lake Monroe Park (Seminole/Volusia Co.)	\$1,800,000	CON
C2C	4357201	7	Hernando	Good Neighbor Trail Connector: Alternate Alignment	West Suncoast Parkway to SR 50/Cortez Boulevard, Brooksville	\$475,358	PE
SJR2C	2102868	2	St. Johns	Palatka to St. Augustine State Trail aka SR 207 Rail Trail	Main Street (Hastings) to SR 207/Spuds	\$3,288,834	CON
SJR2C	4357961	2	St. Johns	Palatka to St. Augustine State Trail aka SR 207 Rail Trail	Putnam County Line to Hastings	\$2,217,575	CON
SJR2C	4399321	2	St. Johns	SR 207/A1A	SR 207/A1A from end of trail to Flagler County Line	\$750,000	FS
SJR2C	4398731	5	Flagler	SR A1A	SR A1A or Alternate Route from S. 26th Street to N. 9th Street	\$600,000	FS, PDE
SJR2C	4398711	5	Volusia	Daytona Beach Gap 1: North Beach Street	N Beach Street/Sickler Drive from 350' south of 2nd Street to 2nd Street (N. city limits)	\$20,000	PE
SJR2C	4398701	5	Volusia	Daytona Beach Gap 2: Ballough Road Bridge	Ballough Road approximately 0.01 miles north of Anita Avenue	\$20,000	PE
SJR2C	4398691	5	Volusia	Daytona Beach Gap 3: South Beach Street	South Beach Street from Marina Point Drive to Orange Avenue	\$100,000	PE
SJR2C	4398681	5	Volusia	Daytona Beach Gap 4: South Beach Street	South Beach Street from Bellevue Avenue to Marina Point Drive	\$65,000	PE
SJR2C	4398671	5	Volusia	Daytona Beach Gap 5: Donnelly Place	Donnelly Place from Shady Place to Bellevue Avenue	\$510,000	CON
SJR2C	4398661	5	Volusia	Daytona Beach Gap 6: South Beach Street	South Beach Street from Wilder Boulevard to Shady Place	\$100,000	PE
SJR2C	4398631	5	Volusia	Edgewater Gap	Dale Avenue to 10th Street	\$1,100,000	CON
SJR2C	4398651	5	Volusia	New Smyrna to Port Orange Gap: US 1	US 1 from Canal Street to Beville Road	\$1,500,000	PDE
SJR2C	4398621	5	Volusia	Oak Hill to Edgewater	US 1 at Kennedy Parkway to Dale Avenue	\$800,000	PDE
SJR2C	4398721	5	Volusia	Ormond Beach Gap: SR 40 - Cassen Park	SR 40 from Cassen Park to SR A1A	\$300,000	FS
SJR2C	4398771	5	Volusia	Pierson Gap: SR 15 (US 17)	SR 15 (US 17) from Washington Avenue to Palmetto Avenue	\$300,000	PE
SJR2C	4398751	5	Volusia	Spring to Spring Gap: Deleon Springs	Grand Avenue/Baxter Street to SR 15 (US 17)	\$750,000	PE
SJR2C	4398741	5	Volusia	Spring to Spring: Deland	Lake Beresford Park to Grand Avenue	\$750,000	PDE
IND	4298202	1	Charlotte	SWCC: Harborwalk Phase 1B Southern Boardwalk	SR 45 Gap, Charlotte Harbor	\$1,114,800	CON
IND	4402341	1	Charlotte	SWCC: North Alligator Creek Pedestrian Bridge	US 41 and North Fork Alligator Creek, Punta Gorda	\$215,000	PE
IND	4402361	1	Lee	SWCC: Van Buren/EI Dorado/Kismet Trail	Cape Coral Gap: Del Prado Blvd. to Burnt Store Road at Van Buren Parkway	\$1,778,100	PE
IND	4402351	1	Polk	Van Fleet State Trail: Pedestrian Bridge Replacement	Polk City	\$251,000	PE, CON
IND	4399341	2	Alachua	SR 24/Archer Road Multiuse Trail	SW 76th Terrace to SW 41st Boulevard, Gainesville	\$450,000	PE
IND	4399331	2	Alachua	Tower Road Multiuse Trail	SW 26th Place to SW 8th Avenue, Gainesville	\$950,000	CON
IND	4282023	2	Putnam	Palatka to Lake Butler State Trail aka SR 100 Rail Trail	Roberts Lane to St. Johns River Water Management District	\$6,261,419	CON
IND	4399281	3	Bay	Lynn Haven Rails to Trails	SR 75 (US 231) to East 10th Street	\$268,000	PE
IND	4389082	3	Escambia	Perdido Key Multiuse Trail (SR 292)	Alabama State Line to State Park Entrance/Gongora Drive	\$1,123,144	PE
IND	4399262	3	Wakulla	CC2S: Coastal Trail East: SR 30 (US 98)	West of SR 363 Woodville Highway/St. Marks Trail to Lighthouse Road	\$200,000	PE
IND	4399261	3	Wakulla	CC2S: Coastal Trail West: SR 30 (US 98) Coastal Highway	CR 372/Surf Road to SR 61 (US 98), Panacea	\$800,000	PE
IND	4400321	4	St. Lucie	ECG-SE: FEC Overpass	Savannas Recreation Area to S. of Savannah Rd./Heathcote Gardens, Fort Pierce	\$275,000	PDE
IND	4400331	4	St. Lucie	ECG-SE: Historic Downtown Ft. Pierce Retrofit	Georgia Avenue to A1A/N Causeway Drive, Fort Pierce	\$275,000	PDE
IND	4400341	4	St. Lucie	ECG-SE: Historic Highwayman Trail Gap	Indian Hills Drive to Georgia Avenue, Fort Pierce	\$100,000	PDE
IND	4399971	4	St. Lucie	ECG-SE: Indian Hills Recreation Area Trail Retrofit	South of Savannah Road to Indian Hills Drive, Fort Pierce	\$80,000	PE
IND	4399991	4	St. Lucie	ECG-SE: Savannas Preserve State Park Gap	Walton Road to Savannas Recreation Area, Port St. Lucie	\$500,000	PDE
IND	4398781	5	Osceola	Shingle Creek Trail South Phase 1B	Palmetto Ave. to southern limit of future Shingle Creek Phase 2B, Kissimmee	\$2,230,000	CON
IND	4398981	6	Miami-Dade	Biscayne Trail Segment D, Phase 2	SW 117th Avenue to SW 137th Avenue, Homestead	\$122,825	PE
IND	4398991	6	Miami-Dade	Biscayne Everglades Greenway East	East Mowry Drive to SW 137th Avenue, Homestead	\$206,000	PE
IND	4355012	6	Miami-Dade	ECG-SE: The Underline Segment A	SW 13th Street to SW 19th Avenue, Miami	\$1,445,000	PE
IND	4373491	7	Citrus	HOFL: Withlacoochee-Dunnellon Trail Connector	North end of the Withlacoochee State Trail to south end of the Dunnellon Trail	\$280,000	PE
IND	4400931	7	Pinellas	SWCC: Pinellas Trail Loop Phase 2	John Chestnut Park to Enterprise Road, Palm Harbor	\$5,700,000	PE, CON
IND	4374981	7	Pinellas	SWCC: SR 60/Courtney Campbell Cswy Ped. Overpass	Courtney Campbell to Bayshore Trail segment/Ream Wilson Clearwater Trail	\$1,362,488	PE
<b>Total</b>						<b>\$44,434,543</b>	

### Legend

#### Adopted Work Program

FY 2016/2017

Phase  
 FS = Feasibility Study; Phase Group - 1 and Phase Type all but 9;  
 PD&E=Project Development & Environmental; Phase Group - 2 and Phase Type - all but 9;  
 PE=Preliminary Engineering; Phase Group - 3; Phase Type - all but 9;  
 ENV=EnvironmentalMitigation; Phase Group - C; Phase Type - all but 9;  
 ROW=Right-of-Way  
 CON=Construction and Support

### Notes

- (1) Tiers : C2C - Coast to Coast; SJR2C - St. Johns River to Sea Loop; IND - Individual
- (2) Project costs are subject to change;
- (3) An allocation to one project phase is not a guarantee of commitment to allocations for future phases.





# SUN Trail Shared Use Non-Motorized Trail Program

Projects



## District 1

## Adopted Work Program

Tier	FM#	District	County Name	Trail Name	Segment	COST	PHASE
IND	4298202	1	Charlotte	SWCC: Harborwalk Phase 1B Southern Boardwalk	SR 45 Gap, Charlotte Harbor	\$1,114,800	CON
IND	4402341	1	Charlotte	SWCC: North Alligator Creek Pedestrian Bridge	US 41 and North Fork Alligator Creek, Punta Gorda	\$215,000	PE
IND	4402361	1	Lee	SWCC: Van Buren/El Dorado/Kismet Trail	Cape Coral Gap: Del Prado Blvd. to Burnt Store Road at Van Buren Parkway	\$1,778,100	PE
IND	4402351	1	Polk	Van Fleet State Trail: Pedestrian Bridge Replacement	Polk City	\$251,000	PE, CON
<b>Total</b>						<b>\$3,358,900</b>	

### Legend

#### Adopted Work Program

FY 2016/2017

Phase  
 FS = Feasibility Study; Phase Group - 1 and Phase Type all but 9;  
 PD&E=Project Development & Environmental; Phase Group - 2 and Phase Type - all but 9;  
 PE=Preliminary Engineering; Phase Group - 3; Phase Type - all but 9;  
 ENV=EnvironmentalMitigation: Phase Group - C; Phase Type - all but 9;  
 ROW=Right-of-Way  
 CON=Construction and Support

### Notes

- (1) Tiers : C2C - Coast to Coast; SJR2C - St. Johns River to Sea Loop; IND - Individual
- (2) Project costs are subject to change;
- (3) An allocation to one project phase is not a guarantee of commitment to allocations for future phases.

## Shared-Use Nonmotorized (SUN) Trail Program

### District 1

State Of Florida Department of Transportation  
 Systems Planning Office

### Adopted Work Program

(FY 2016/2017)  
 as of October, 2016

Projects color coded by year of highest phase

#### LEGEND

##### Project Phase

- █ Feasibility Study
- █ Feasibility Study, Project Development & Environment
- █ Project Development & Environment
- █ Preliminary Engineering
- █ Right of Way
- █ Construction

Work Program Itemseg No. 4364341  
 Location/Route number SPRING TO SPRING TRAIL  
 Limits US 17/92 SENTINEL  
 US 17/92 VOLUSIA  
 Tag for Individual Project

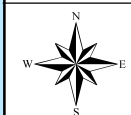
#### NOTES

An allocation to one project phase is not a guarantee of commitment to allocations for future project phases.

Source:  
 Florida Department of Transportation  
 -Systems Planning Office

#### Existing Conditions

- █ SUNTrail Network
- █ Water
- █ Highways
- + Railroads
- Planned SIS roads
- County Boundaries



4402351  
 Van Fleet State Trail: Pe  
 Polk City

4298202  
 Harborwalk Ph1B Southern  
 SR 45 Gap, Charlotte Harb

4402341  
 North Alligator Creek  
 Pedestrian Bridge  
 Mandalay Road

4402361  
 Van Buren/EI Dorado/Kisme  
 DeI Prado Blvd  
 Burnt Store Road at Van B





# SUN Trail Shared Use Non-Motorized Trail Program

Projects



## District 2

## Adopted Work Program

Tier	FM#	District	County Name	Trail Name	Segment	COST	PHASE
SJR2C	2102868	2	St. Johns	Palatka to St. Augustine State Trail aka SR 207 Rail Trail	Main Street (Hastings) to SR 207/Spuds	\$3,288,834	CON
SJR2C	4357961	2	St. Johns	Palatka to St. Augustine State Trail aka SR 207 Rail Trail	Putnam County Line to Hastings	\$2,217,575	CON
SJR2C	4399321	2	St. Johns	SR 207/A1A	SR 207/A1A from end of trail to Flagler County Line	\$750,000	FS
IND	4399341	2	Alachua	SR 24/Archer Road Multiuse Trail	SW 76th Terrace to SW 41st Boulevard, Gainesville	\$450,000	PE
IND	4399331	2	Alachua	Tower Road Multiuse Trail	SW 26th Place to SW 8th Avenue, Gainesville	\$950,000	CON
IND	4282023	2	Putnam	Palatka to Lake Butler State Trail aka SR 100 Rail Trail	Roberts Lane to St. Johns River Water Management District	\$6,261,419	CON
<b>Total</b>						<b>\$13,917,828</b>	

### Legend

#### Adopted Work Program

FY 2016/2017

Phase  
 FS = Feasibility Study; Phase Group - 1 and Phase Type all but 9;  
 PD&E=Project Development & Environmental; Phase Group - 2 and Phase Type - all but 9;  
 PE=Preliminary Engineering; Phase Group - 3; Phase Type - all but 9;  
 ENV=EnvironmentalMitigation: Phase Group - C; Phase Type - all but 9;  
 ROW=Right-of-Way  
 CON=Construction and Support

### Notes

- (1) Tiers : C2C - Coast to Coast; SJR2C - St. Johns River to Sea Loop; IND - Individual
- (2) Project costs are subject to change;
- (3) An allocation to one project phase is not a guarantee of commitment to allocations for future phases.





# SUN Trail Shared Use Non-Motorized Trail Program

Projects



## District 3

## Adopted Work Program

Tier	FM#	District	County Name	Trail Name	Segment	COST	PHASE
IND	4399281	3	Bay	Lynn Haven Rails to Trails	SR 75 (US 231) to East 10th Street	\$268,000	PE
IND	4389082	3	Escambia	Perdido Key Multiuse Trail (SR 292)	Alabama State Line to State Park Entrance/Gongora Drive	\$1,123,144	PE
IND	4399262	3	Wakulla	CC2S: Coastal Trail East: SR 30 (US 98)	West of SR 363 Woodville Highway/St. Marks Trail to Lighthouse Road	\$200,000	PE
IND	4399261	3	Wakulla	CC2S: Coastal Trail West: SR 30 (US 98) Coastal Highway	CR 372/Surf Road to SR 61 (US 98), Panacea	\$800,000	PE
						<b>Total \$2,391,144</b>	

### Legend

#### Adopted Work Program

FY 2016/2017

Phase  
 FS = Feasibility Study; Phase Group - 1 and Phase Type all but 9;  
 PD&E=Project Development & Environmental; Phase Group - 2 and Phase Type - all but 9;  
 PE=Preliminary Engineering; Phase Group - 3; Phase Type - all but 9;  
 ENV=EnvironmentalMitigation: Phase Group - C; Phase Type - all but 9;  
 ROW=Right-of-Way  
 CON=Construction and Support

### Notes

- (1) Tiers : C2C - Coast to Coast; SJR2C - St. Johns River to Sea Loop; IND - Individual
- (2) Project costs are subject to change;
- (3) An allocation to one project phase is not a guarantee of commitment to allocations for future phases.



## Shared-Use Nonmotorized (SUN) Trail Program

### District 3







State Of Florida Department of Transportation  
Systems Planning Office

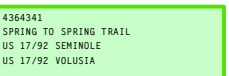
### Adopted Work Program

(FY 2016/2017)  
as of October, 2016  
Projects color coded by year of highest phase

#### LEGEND

##### Project Phase

-  Feasibility Study
-  Feasibility Study, Project Development & Environment
-  Project Development & Environment
-  Preliminary Engineering
-  Right of Way
-  Construction


Work Program Itemseg No.  4364341  
Location/Route number SPRING TO SPRING TRAIL  
Limits US 17/92 SEMINOLE  
US 17/92 VOLUSIA Tag for Individual Project

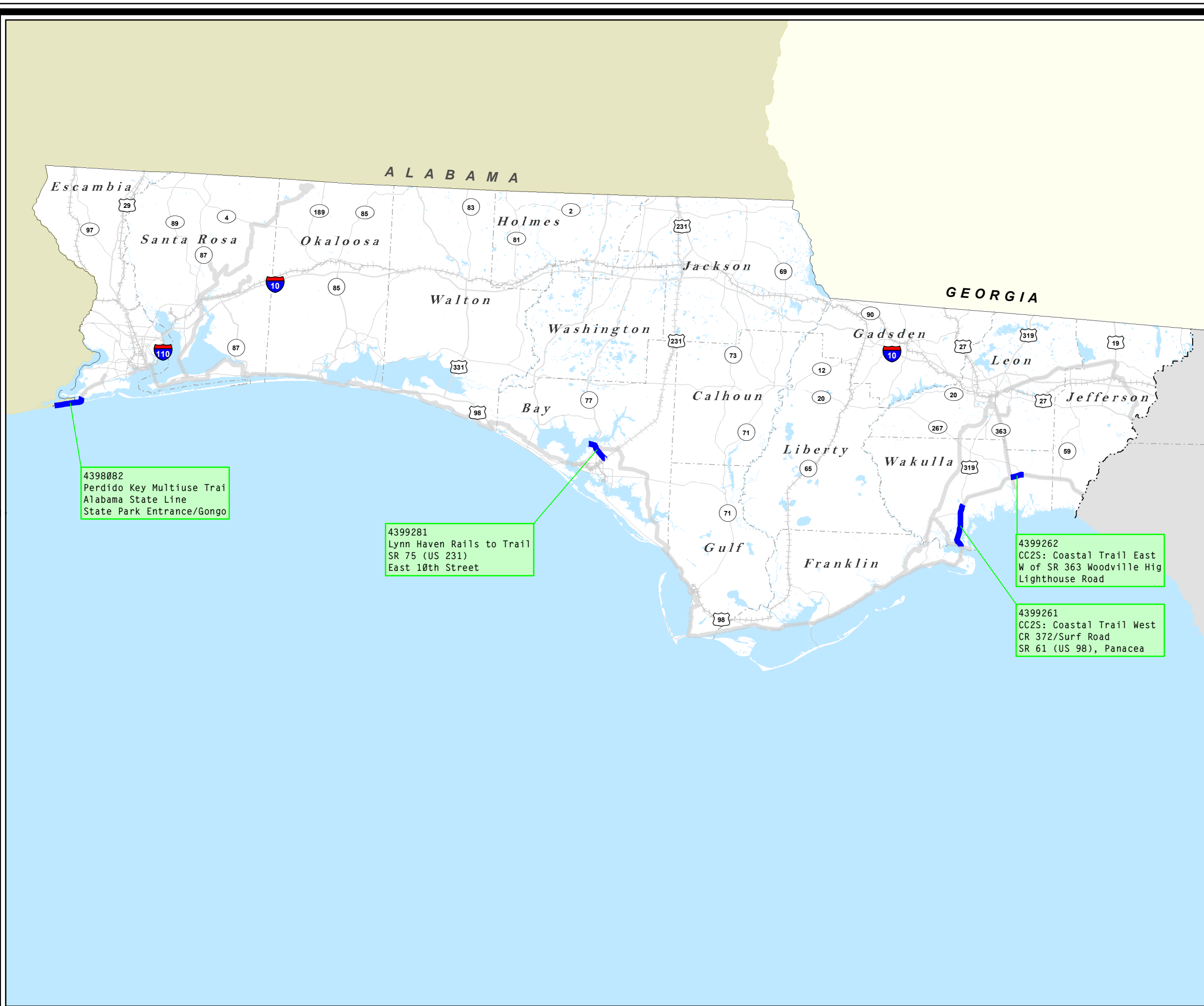
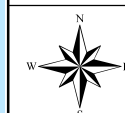
#### NOTES

An allocation to one project phase is not a guarantee of commitment to allocations for future project phases.

Source:  
Florida Department of Transportation  
-Systems Planning Office

#### Existing Conditions

-  SUNTrail Network
-  Water
-  Highways
-  Railroads
-  Planned SIS roads
-  County Boundaries





# SUN Trail Shared Use Non-Motorized Trail Program

Projects



## District 4

## Adopted Work Program

Tier	FM#	District	County Name	Trail Name	Segment	COST	PHASE
IND	4400321	4	St. Lucie	ECG-SE: FEC Overpass	Savannas Recreation Area to S. of Savannah Rd./Heathecote Gardens, Fort Pierce	\$275,000	PDE
IND	4400331	4	St. Lucie	ECG-SE: Historic Downtown Ft. Pierce Retrofit	Georgia Avenue to A1A/N Causeway Drive, Fort Pierce	\$275,000	PDE
IND	4400341	4	St. Lucie	ECG-SE: Historic Highwayman Trail Gap	Indian Hills Drive to Georgia Avenue, Fort Pierce	\$100,000	PDE
IND	4399971	4	St. Lucie	ECG-SE: Indian Hills Recreation Area Trail Retrofit	South of Savannah Road to Indian Hills Drive, Fort Pierce	\$80,000	PE
IND	4399991	4	St. Lucie	ECG-SE: Savannas Preserve State Park Gap	Walton Road to Savannas Recreation Area, Port St. Lucie	\$500,000	PDE
						<b>Total \$1,230,000</b>	

### Legend

#### Adopted Work Program

FY 2016/2017

Phase  
 FS = Feasibility Study; Phase Group - 1 and Phase Type all but 9;  
 PD&E=Project Development & Environmental; Phase Group - 2 and Phase Type - all but 9;  
 PE=Preliminary Engineering; Phase Group - 3; Phase Type - all but 9;  
 ENV=EnvironmentalMitigation: Phase Group - C; Phase Type - all but 9;  
 ROW=Right-of-Way  
 CON=Construction and Support

### Notes

- (1) Tiers : C2C - Coast to Coast; SJR2C - St. Johns River to Sea Loop; IND - Individual
- (2) Project costs are subject to change;
- (3) An allocation to one project phase is not a guarantee of commitment to allocations for future phases.

## Shared-Use Nonmotorized (SUN) Trail Program

### District 4

State Of Florida Department of Transportation  
Systems Planning Office

### Adopted Work Program

(FY 2016/2017)  
as of October, 2016  
Projects color coded by year of highest phase

#### LEGEND

##### Project Phase

- █ Feasibility Study
- █ Feasibility Study, Project Development & Environment
- █ Project Development & Environment
- █ Preliminary Engineering
- █ Right of Way
- █ Construction

Work Program Itemseq No. 4364341  
Location/Route number SPRING TO SPRING TRAIL  
Limits US 17/92 SEMINOLE  
US 17/92 VOLUSIA Tag for Individual Project

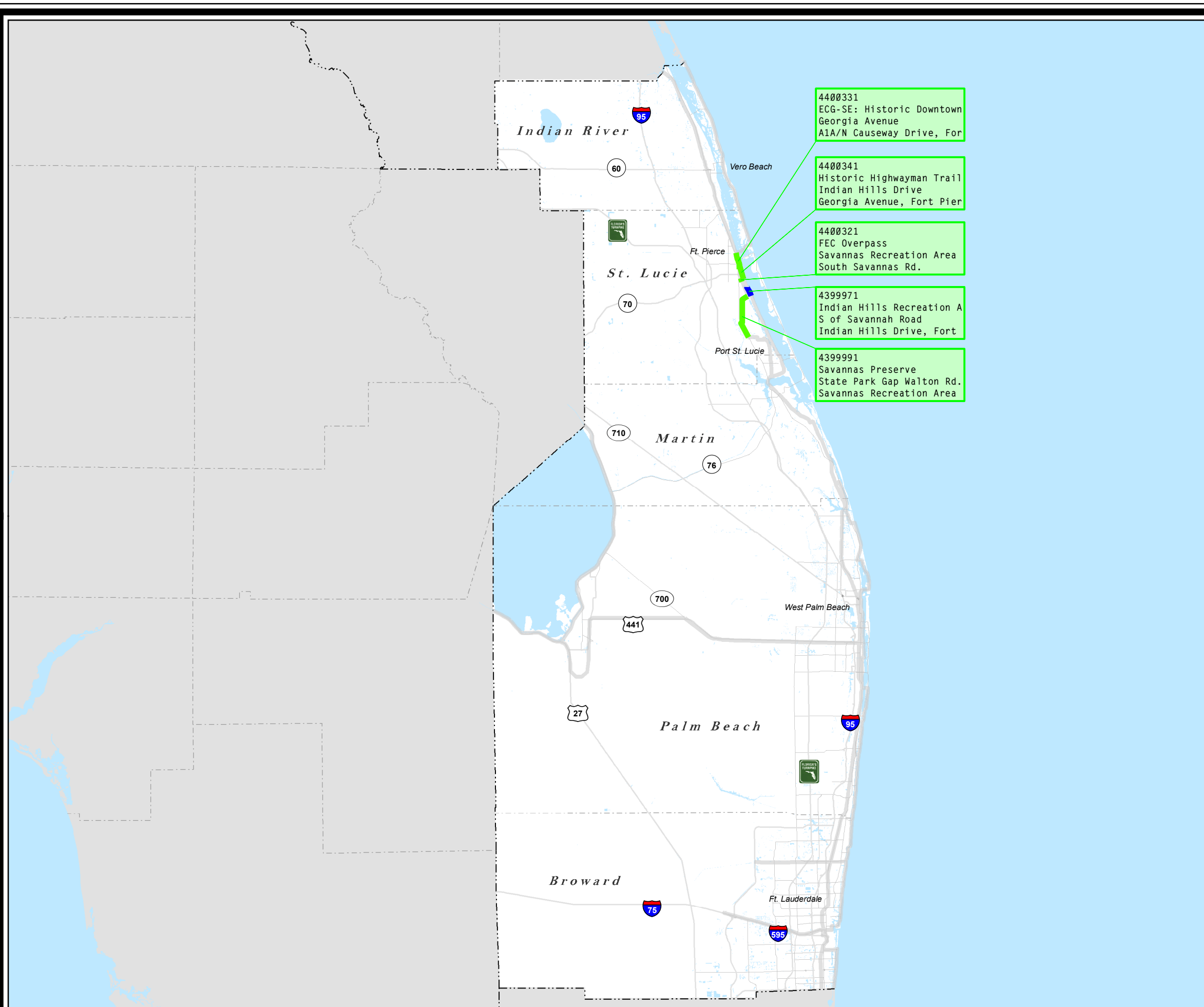
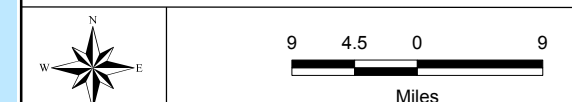
#### NOTES

An allocation to one project phase is not a guarantee of commitment to allocations for future project phases.

Source:  
Florida Department of Transportation  
-Systems Planning Office

#### Existing Conditions

- █ SUNTrail Network
- █ Water
- Highways
- ++ Railroads
- Planned SIS roads
- County Boundaries



4400331  
ECG-SE: Historic Downtown  
Georgia Avenue  
A1A/N Causeway Drive, For

4400341  
Historic Highwayman Trail  
Indian Hills Drive  
Georgia Avenue, Fort Pier

4400321  
FEC Overpass  
Savannas Recreation Area  
South Savannas Rd.

4399971  
Indian Hills Recreation A  
S of Savannah Road  
Indian Hills Drive, Fort

4399991  
Savannas Preserve  
State Park Gap Walton Rd.  
Savannas Recreation Area





# SUN Trail Shared Use Non-Motorized Trail Program

Projects



**District 5**

**Adopted Work Program**

Tier	FM#	District	County Name	Trail Name	Segment	COST	PHASE
C2C	4361873	5	Brevard	Space Coast Trail: Titusville	East end of Max Brewer Bridge to Merritt Island Refuge	\$300,000	PE
C2C	4358931	5	Lake	South Lake Trail Phase 4	Van Fleet State Trail to Villa City Rd. (CR 565)	\$700,000	PE
C2C	4364331	5	Orange	Orange Co. Gap Segment 2	N Hiawasse Rd. to N of SR 414 on SR 441/Clarcona-Ocoee Connector/Pine Hills Ph. 3	\$2,000,000	PE
C2C	4364341	5	Volusia	Spring to Spring Trail: US 17/92 Bridge	Wayside Park to Lake Monroe Park (Seminole/Volusia Co.)	\$1,800,000	CON
SJR2C	4398731	5	Flagler	SR A1A	SR A1A or Alternate Route from S. 26th Street to N. 9th Street	\$600,000	FS, PDE
SJR2C	4398711	5	Volusia	Daytona Beach Gap 1: North Beach Street	N Beach Street/Sickler Drive from 350' south of 2nd Street to 2nd Street (N. city limits)	\$20,000	PE
SJR2C	4398701	5	Volusia	Daytona Beach Gap 2: Ballough Road Bridge	Ballough Road approximately 0.01 miles north of Anita Avenue	\$20,000	PE
SJR2C	4398691	5	Volusia	Daytona Beach Gap 3: South Beach Street	South Beach Street from Marina Point Drive to Orange Avenue	\$100,000	PE
SJR2C	4398681	5	Volusia	Daytona Beach Gap 4: South Beach Street	South Beach Street from Bellevue Avenue to Marina Point Drive	\$65,000	PE
SJR2C	4398671	5	Volusia	Daytona Beach Gap 5: Donnelly Place	Donnelly Place from Shady Place to Bellevue Avenue	\$510,000	CON
SJR2C	4398661	5	Volusia	Daytona Beach Gap 6: South Beach Street	South Beach Street from Wilder Boulevard to Shady Place	\$100,000	PE
SJR2C	4398631	5	Volusia	Edgewater Gap	Dale Avenue to 10th Street	\$1,100,000	CON
SJR2C	4398651	5	Volusia	New Smyrna to Port Orange Gap: US 1	US 1 from Canal Street to Beville Road	\$1,500,000	PDE
SJR2C	4398621	5	Volusia	Oak Hill to Edgewater	US 1 at Kennedy Parkway to Dale Avenue	\$800,000	PDE
SJR2C	4398721	5	Volusia	Ormond Beach Gap: SR 40 - Cassen Park	SR 40 from Cassen Park to SR A1A	\$300,000	FS
SJR2C	4398771	5	Volusia	Pierson Gap: SR 15 (US 17)	SR 15 (US 17) from Washington Avenue to Palmetto Avenue	\$300,000	PE
SJR2C	4398751	5	Volusia	Spring to Spring Gap: Deleon Springs	Grand Avenue/Baxter Street to SR 15 (US 17)	\$750,000	PE
SJR2C	4398741	5	Volusia	Spring to Spring: Deland	Lake Beresford Park to Grand Avenue	\$750,000	PDE
IND	4398781	5	Osceola	Shingle Creek Trail South Phase 1B	Palmetto Ave. to southern limit of future Shingle Creek Phase 2B, Kissimmee	\$2,230,000	CON
						<b>Total \$13,945,000</b>	

**Legend**

**Adopted Work Program**

**FY 2016/2017**

Phase  
 FS = Feasibility Study; Phase Group - 1 and Phase Type all but 9;  
 PD&E=Project Development & Environmental; Phase Group - 2 and Phase Type - all but 9;  
 PE=Preliminary Engineering; Phase Group - 3; Phase Type - all but 9;  
 ENV=Environmental Mitigation; Phase Group - C; Phase Type - all but 9;  
 ROW=Right-of-Way  
 CON=Construction and Support

**Notes**

- (1) Tiers : C2C - Coast to Coast; SJR2C - St. Johns River to Sea Loop; IND - Individual
- (2) Project costs are subject to change;
- (3) An allocation to one project phase is not a guarantee of commitment to allocations for future phases.

## Shared-Use Nonmotorized (SUN) Trail Program

### District 5

State Of Florida Department of Transportation  
Systems Planning Office

### Adopted Work Program

(FY 2016/2017)  
as of October, 2016

Projects color coded by year of highest phase

#### LEGEND

##### Project Phase

- █ Feasibility Study
- █ Feasibility Study, Project Development & Environment
- █ Project Development & Environment
- █ Preliminary Engineering
- █ Right of Way
- █ Construction

█ Two miles Buffer of Coast To Coast

█ Two miles Buffer of St. Johns River - to - Sea Loop

Work Program Itemseq No:	4364341	Tag for Regional Coast to Coast (C2C) Project
Location/Route number:	SPRING TO SPRING TRAIL	
Limits:	US 17/92 SEMINOLE US 17/92 VOLUSIA	
Work Program Itemseq No:	4364341	Tag for Regional St. Johns River - to - Sea Loop Project
Location/Route number:	SPRING TO SPRING TRAIL	
Limits:	US 17/92 SEMINOLE US 17/92 VOLUSIA	
Work Program Itemseq No:	4364341	Tag for Individual Project
Location/Route number:	SPRING TO SPRING TRAIL	
Limits:	US 17/92 SEMINOLE US 17/92 VOLUSIA	

#### NOTES

An allocation to one project phase is not a guarantee of commitment to allocations for future project phases.

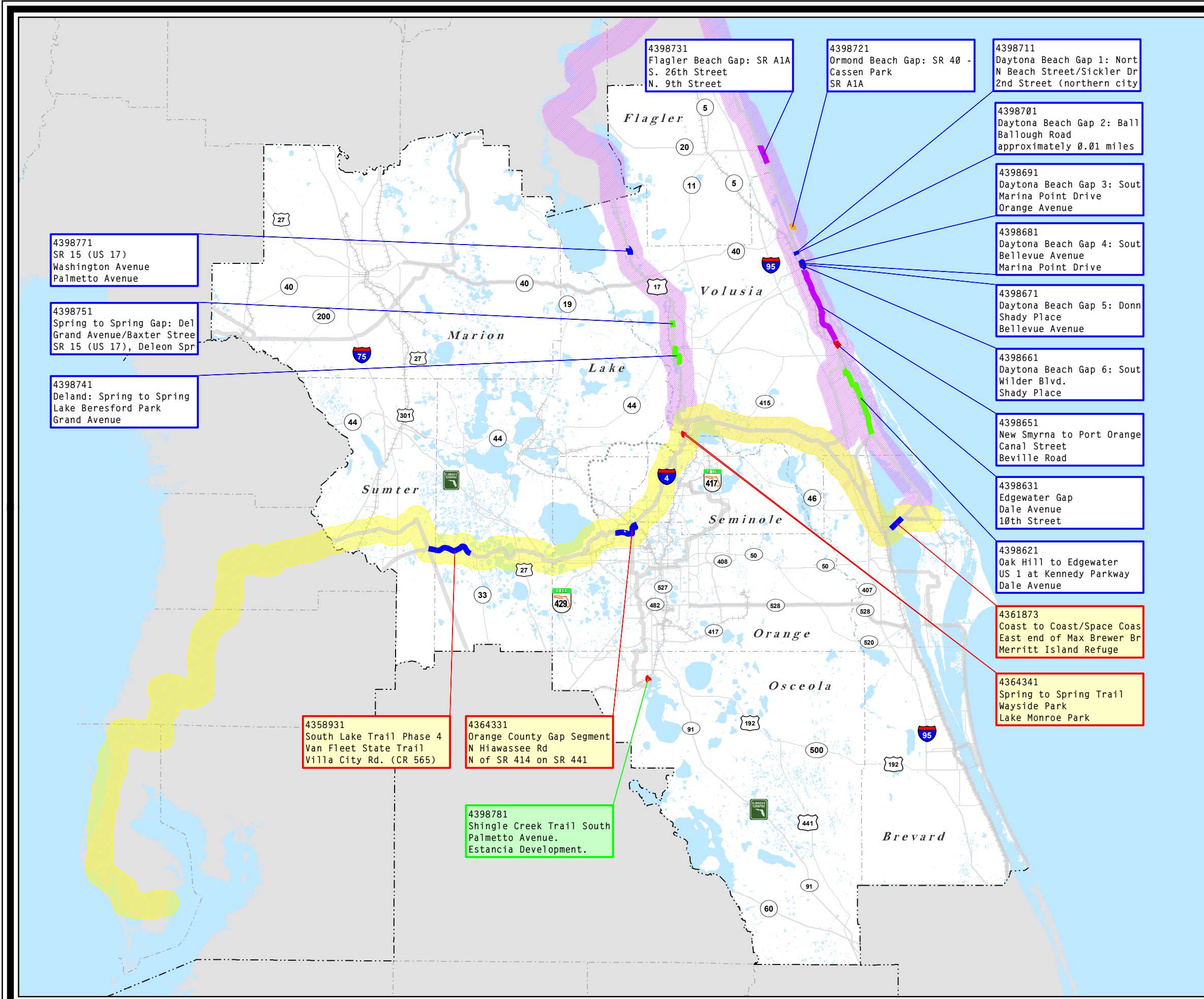
Source:  
Florida Department of Transportation  
-Systems Planning Office

#### Existing Conditions

- SUNTrail Network
- Highways
- Planned SIS roads
- █ Water
- ++ Railroads
- County Boundaries



10 5 0 10  
Miles





# SUN Trail Shared Use Non-Motorized Trail Program

Projects



District 6

Adopted Work Program

Tier	FM#	District	County Name	Trail Name	Segment	COST	PHASE
IND	4398981	6	Miami-Dade	Biscayne Trail Segment D, Phase 2	SW 117th Avenue to SW 137th Avenue, Homestead	\$122,825	PE
IND	4398991	6	Miami-Dade	Biscayne Everglades Greenway East	East Mowry Drive to SW 137th Avenue, Homestead	\$206,000	PE
IND	4355012	6	Miami-Dade	ECG-SE: The Underline Segment A	SW 13th Street to SW 19th Avenue, Miami	\$1,445,000	PE
<b>Total</b>						<b>\$1,773,825</b>	

Legend

Adopted Work Program

FY 2016/2017

Phase  
 FS = Feasibility Study; Phase Group - 1 and Phase Type all but 9;  
 PD&E=Project Development & Environmental; Phase Group - 2 and Phase Type - all but 9;  
 PE=Preliminary Engineering; Phase Group - 3; Phase Type - all but 9;  
 ENV=EnvironmentalMitigation: Phase Group - C; Phase Type - all but 9;  
 ROW=Right-of-Way  
 CON=Construction and Support

Notes

- (1) Tiers : C2C - Coast to Coast; SJR2C - St. Johns River to Sea Loop; IND - Individual
- (2) Project costs are subject to change;
- (3) An allocation to one project phase is not a guarantee of commitment to allocations for future phases.



## Shared-Use Nonmotorized (SUN) Trail Program

### District 6

State Of Florida Department of Transportation  
 Systems Planning Office

### Adopted Work Program

(FY 2016/2017)  
 as of October, 2016  
 Projects color coded by year of highest phase

#### LEGEND

##### Project Phase

- █ Feasibility Study
- █ Feasibility Study, Project Development & Environment
- █ Project Development & Environment
- █ Preliminary Engineering
- █ Right of Way
- █ Construction

Work Program Itemseg No. 4364341  
 Location/Route number SPRING TO SPRING TRAIL  
 Limits US 17/92 SEMEOLE US 17/92 VOLUSTIA  
 Tag for Individual Project

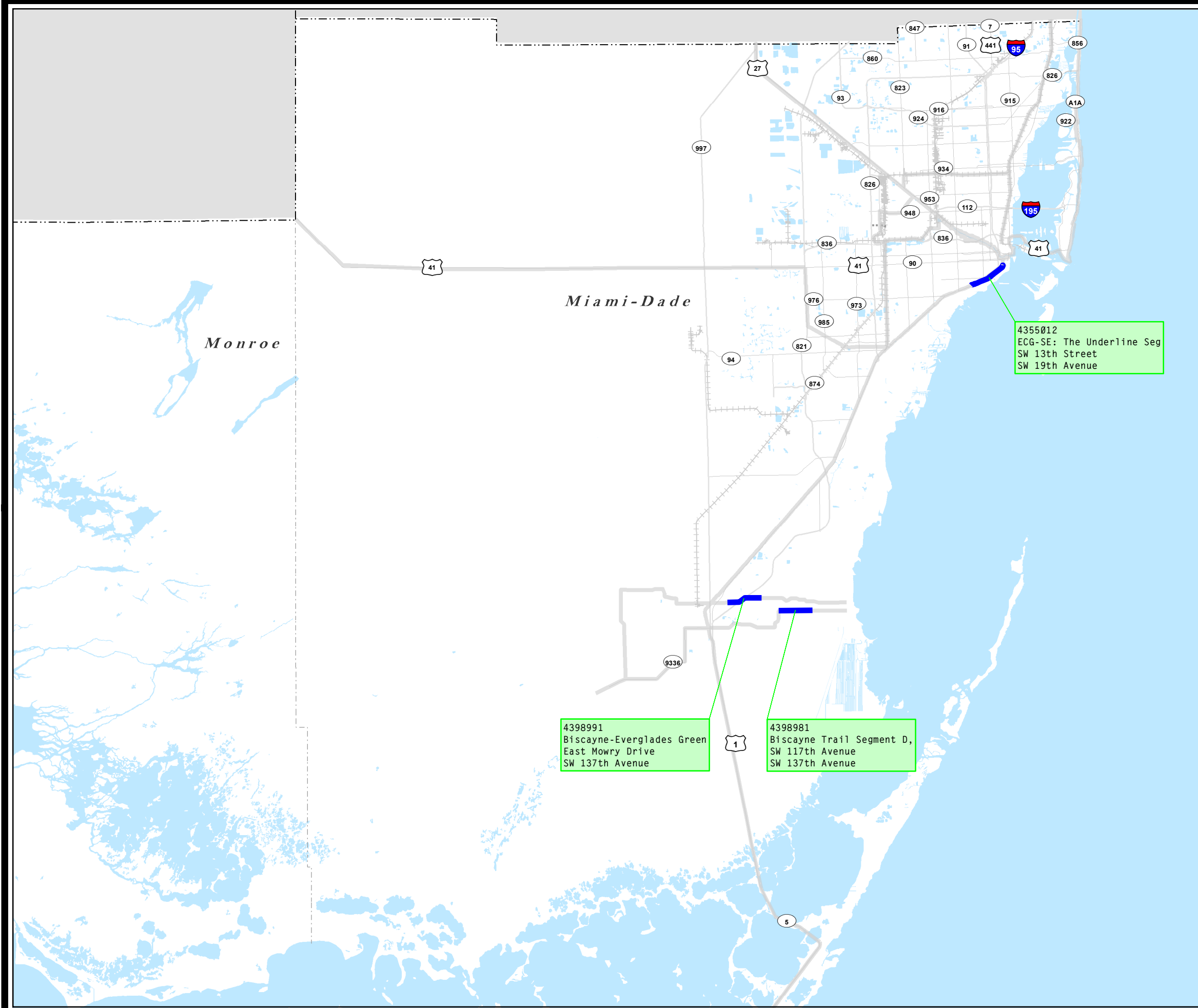
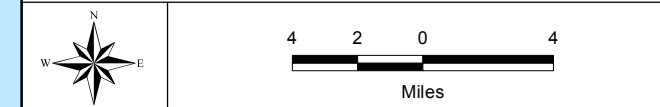
#### NOTES

An allocation to one project phase is not a guarantee of commitment to allocations for future project phases.

Source:  
 Florida Department of Transportation  
 -Systems Planning Office

#### Existing Conditions

- █ SUNTrail Network
- █ Water
- Highways
- ++ Railroads
- Planned SIS roads
- County Boundaries



4398991  
 Biscayne-Everglades Green  
 East Mowry Drive  
 SW 137th Avenue

4398981  
 Biscayne Trail Segment D,  
 SW 117th Avenue  
 SW 137th Avenue

4355012  
 ECG-SE: The Underline Seg  
 SW 13th Street  
 SW 19th Avenue



# SUN Trail Shared Use Non-Motorized Trail Program

Projects



District 7

Adopted Work Program

Tier	FM#	District	County Name	Trail Name	Segment	COST	PHASE
C2C	4357201	7	Hernando	Good Neighbor Trail Connector: Alternate Alignment	West Suncoast Parkway to SR 50/Cortez Boulevard, Brooksville	\$475,358	PE
IND	4373491	7	Citrus	HOFL: Withlacoochee-Dunnellon Trail Connector	North end of the Withlacoochee State Trail to south end of the Dunnellon Trail	\$280,000	PE
IND	4400931	7	Pinellas	SWCC: Pinellas Trail Loop Phase 2	John Chestnut Park to Enterprise Road, Palm Harbor	\$5,700,000	PE, CON
IND	4374981	7	Pinellas	SWCC: SR 60/Courtney Campbell Cswy Ped. Overpass	Courtney Campbell to Bayshore Trail segment/Ream Wilson Clearwater Trail	\$1,362,488	PE
<b>Total</b>						<b>\$7,817,846</b>	

### Legend

Adopted Work Program

FY 2016/2017

Phase  
 FS = Feasibility Study; Phase Group - 1 and Phase Type all but 9;  
 PD&E=Project Development & Environmental; Phase Group - 2 and Phase Type - all but 9;  
 PE=Preliminary Engineering; Phase Group - 3; Phase Type - all but 9;  
 ENV=EnvironmentalMitigation: Phase Group - C; Phase Type - all but 9;  
 ROW=Right-of-Way  
 CON=Construction and Support

### Notes

- (1) Tiers : C2C - Coast to Coast; SJR2C - St. Johns River to Sea Loop; IND - Individual
- (2) Project costs are subject to change;
- (3) An allocation to one project phase is not a guarantee of commitment to allocations for future phases.

## Shared-Use Nonmotorized (SUN) Trail Program

### District 7

State Of Florida Department of Transportation  
Systems Planning Office

### Adopted Work Program

(FY 2016/2017)  
as of October, 2016  
Projects color coded by year of highest phase

#### LEGEND

- Project Phase**
- Feasibility Study
  - Feasibility Study, Project Development & Environment
  - Project Development & Environment
  - Preliminary Engineering
  - Right of Way
  - Construction
  - ▨ Two miles Buffer of Coast To Coast

Work Program Itemseq No.	4364341	Tag for Regional Coast to Coast (C2C) Project
Location/Route number	SPRING TO SPRING TRAIL	
Limits	US 17/92 SEMINOLE US 17/92 VOLUSTA	
Work Program Itemseq No.	4364341	Tag for Individual Project
Location/Route number	SPRING TO SPRING TRAIL	
Limits	US 17/92 SEMINOLE US 17/92 VOLUSTA	

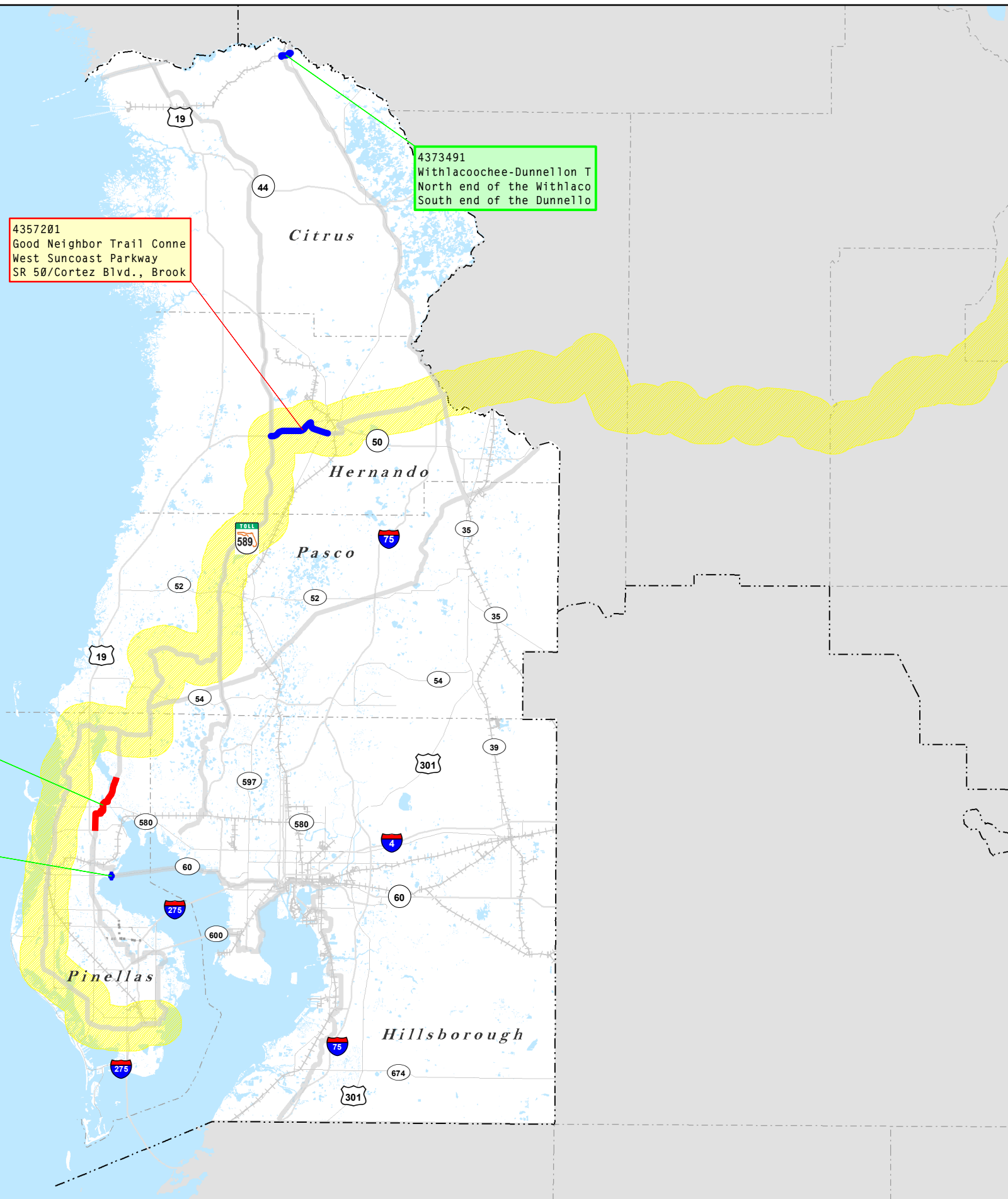
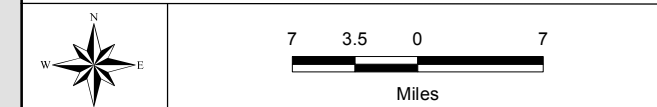
#### NOTES

An allocation to one project phase is not a guarantee of commitment to allocations for future project phases.

Source:  
Florida Department of Transportation  
-Systems Planning Office

#### Existing Conditions

- SUNTrail Network
- Highways
- Planned SIS roads
- Water
- ++ Railroads
- County Boundaries



4357201  
Good Neighbor Trail Conne  
West Suncoast Parkway  
SR 50/Cortez Blvd., Brook

4373491  
Withlacoochee-Dunnellon T  
North end of the Withlaco  
South end of the Dunnello

4400931  
Pinellas Trail Loop Phase  
Enterprise Road  
John Chestnut Park

4374981  
SR 60/Campbell Pedestrian  
CCampbell Causeway Trail  
the Bayshore Trail





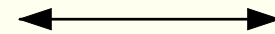


# SUN Trail Shared Use Non-Motorized Trail Program

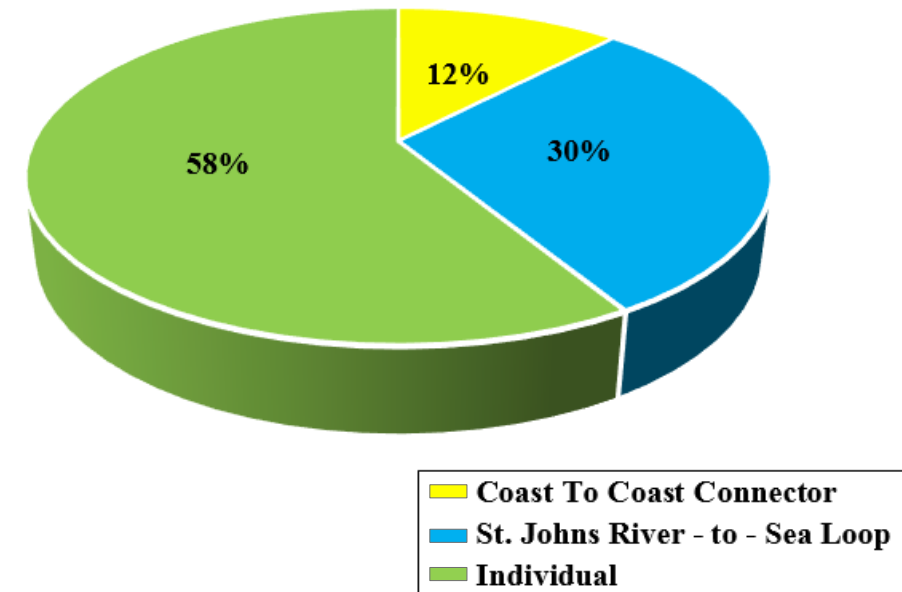
Projects



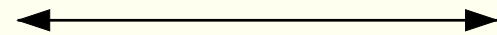
Tier	2017 Cost	Total %
Coast To Coast Connector	\$5,275,358	12%
St. Johns River - to - Sea Loop	\$13,171,409	30%
Individual	\$25,987,776	58%
<b>Total</b>	<b>\$44,434,543</b>	<b>100%</b>



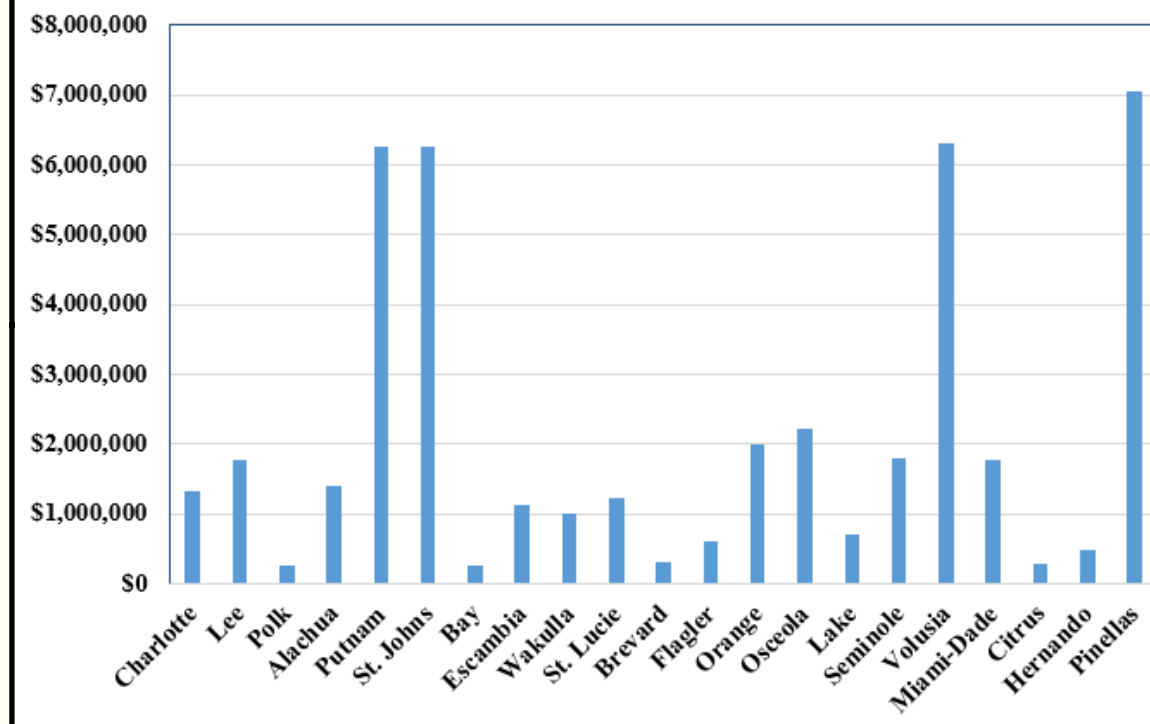
Adopted Work Program By Tier



District	County	2017 Cost
1	Charlotte	\$1,329,800
1	Lee	\$1,778,100
1	Polk	\$251,000
2	Alachua	\$1,400,000
2	Putnam	\$6,261,419
2	St. Johns	\$6,256,409
3	Bay	\$268,000
3	Escambia	\$1,123,144
3	Wakulla	\$1,000,000
4	St. Lucie	\$1,230,000
5	Brevard	\$300,000
5	Flagler	\$600,000
5	Lake	\$700,000
5	Orange	\$2,000,000
5	Osceola	\$2,230,000
5	Seminole	\$1,800,000
5	Volusia	\$6,315,000
6	Miami-Dade	\$1,773,825
7	Citrus	\$280,000
7	Hernando	\$475,358
7	Pinellas	\$7,062,488
<b>Total</b>		<b>\$44,434,543</b>



2017 Funding

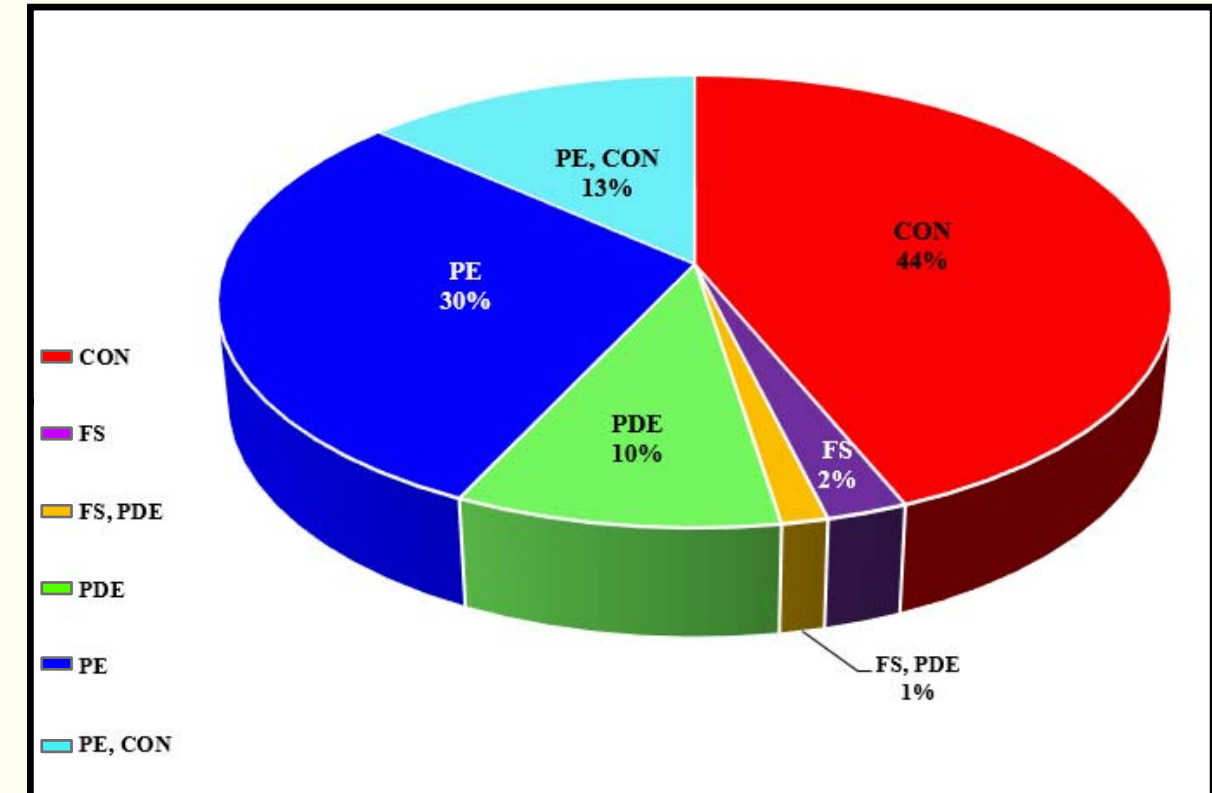
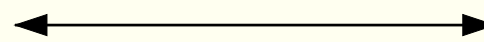






### Adopted Work Program (FY 2016/2017) as of October, 2016 Statewide

Phase	2017 Cost	Total %
FS (Feasibility Study)	\$1,050,000	2%
FS, PDE (Feasibility Study, Project Development & Environment)	\$600,000	1%
PDE (Project Development & Environment )	\$4,200,000	10%
PE (Preliminary Engineering)	\$13,160,915	30%
PE, CON (Preliminary Engineering, Construction)	\$5,951,000	13%
CON (Construction)	\$19,472,628	44%
<b>Total</b>	<b>\$44,434,543</b>	<b>100%</b>



District	2017 Cost
District 1	\$3,358,900
District 2	\$13,917,828
District 3	\$2,391,144
District 4	\$1,230,000
District 5	\$13,945,000
District 6	\$1,773,825
District 7	\$7,817,846
<b>Total</b>	<b>\$44,434,543</b>

