



# *SUN Trail Funding Fact Sheet*

## Coastal Trail Shared-Use Path

### Newport Segment



The Coastal Trail Shared-Use Path (SUP) segment of the Capital City to the Sea Trails (CC2ST) through Wakulla County is complete with funding assistance from the Shared-Use Nonmotorized (SUN) Trail program. Established in 2015, with enacted changes in 2023 under Section 339.81, Florida Statutes, the SUN Trail program receives an annual allocation from the redistribution of new vehicle tag revenues deposited in the State Transportation Trust Fund for administration by the Florida Department of Transportation's (FDOT) Systems Implementation Office. The competitively awarded funding is one source for expanding a safe statewide system of interconnected, high priority, strategic paved multi-use trails (SUN Trail network) for bicyclists and pedestrians and improving connectivity for lands of the Florida Wildlife Corridor Act.

Before the existence of the SUN Trail program, the Wakulla County Board of County Commissioners passed a Resolution in October 2009 supporting the concept of developing a regional SUP system now known as the CC2ST. Following passage of the Resolution, the Capital Region Transportation Planning Agency (CRTPA) led development of the CC2ST Master Plan. Completed in 2013, with significant public input, the Master Plan identifies a series of SUPs connecting Tallahassee's Cascades Park (and Leon County resources) to unique communities and resources in Wakulla County, and beyond to Franklin County.

Receiving nearly \$5.2 million from the SUN Trail program for design and construction of a 10-foot-wide asphalt SUP

since 2017, this Newport segment extends 2.73-miles along US 98 / State Road 30 / Coastal Highway from west of County Road 363 / Woodville Highway to County Road 59 / Lighthouse Road. The design was based on a Project Development and Environment Study (PD&E) provided by CRTPA. This SUP provides direct connections to the previously completed segment that received funding from the FDOT State Infrastructure Bank (SIB) and one of Florida's original trails, known as the Tallahassee - St. Marks Historic Railroad State Trail. SIB is a revolving loan and credit enhancement program that leverages funds to improve project feasibility. It was innovative of partners to identify and use SIB for trail construction. Connecting people and destinations, the Coastal Trail is a contributing resource to the following networks:

- Florida Wildlife Corridor, Priority 1 of the Florida Ecological Greenway Network's "Critical Linkages" which are the most important for protecting an ecologically functional connected statewide network of public and private conservation lands for the safe passage and dispersal routes to maintain healthy populations of plants and animals. [floridawildlifecorridor.org](http://floridawildlifecorridor.org)
- Capital City to Sea Trails, a developing regional system in Leon and Wakulla counties. [www.facebook.com/CC2ST/](https://www.facebook.com/CC2ST/)
- Big Bend Scenic Byway, which is a National Scenic Byway and a Florida Byway. [floridabigbendscenicbyway.org/](http://floridabigbendscenicbyway.org/)



To visit the trail or for more information, contact  
**Wakulla County • 850-926-0919**  
[visitwakulla.com/things-to-do/trails/](http://visitwakulla.com/things-to-do/trails/)

# PROJECT AT-A-GLANCE

## TRAIL

**FDOT DISTRICT NUMBER:** 3

**LENGTH:** 2.73 miles

**CITIES:** Newport

**SURFACE TYPE:** Asphalt

**COUNTIES:** Wakulla

**WIDTH:** 10 feet

## PROJECT

**FINANCIAL MANAGEMENT NUMBERS:** 440550-1

**LIMITS:** US 98 / State Road 30 / Coastal Highway from west of County Road 363 / Woodville Highway to County Road 59 / Lighthouse Road

**CONSTRUCTION START:** January 2024

**CONSTRUCTION COMPLETION:** January 2025

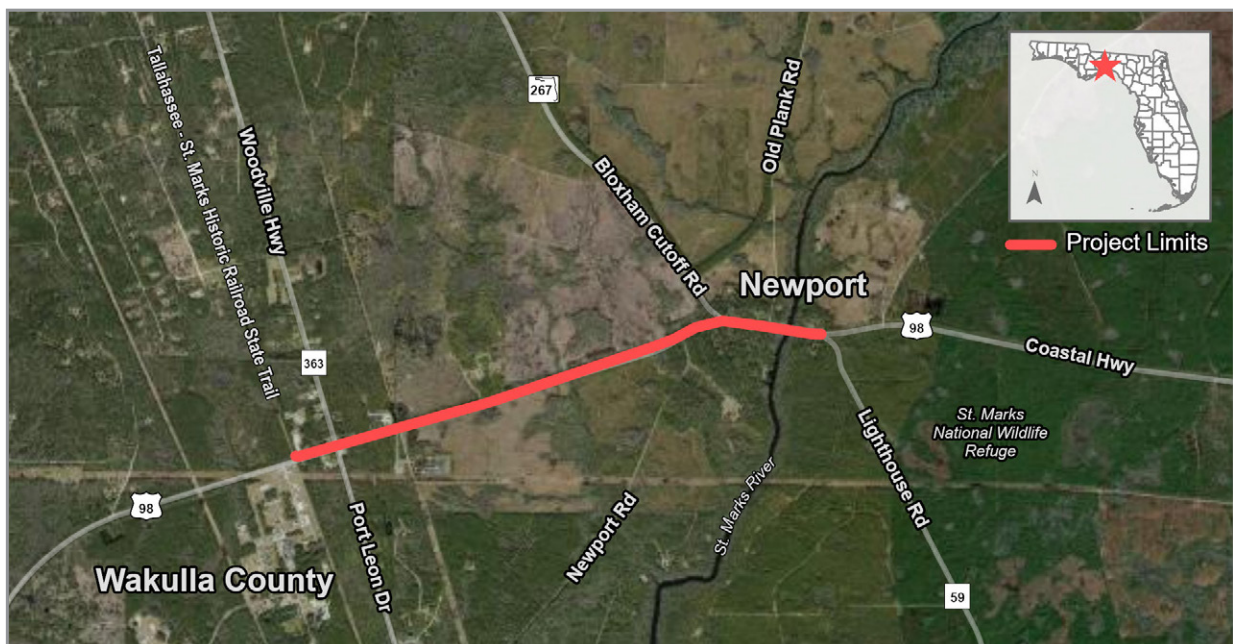
**PHASES:** Design, Environmental Mitigation, Construction and Construction Engineering Inspections

## FUNDING

**FISCAL YEAR:** 2017, 2023, 2024

**AMOUNT:** \$5,181,975 was awarded by the SUN Trail program. Within the project boundary an additional \$162,414 was provided by other FDOT state allocations.

*Florida's Big Bend Region offers a variety of natural, cultural, historical, and scenic resources*



## Florida Department of Transportation Shared-Use Nonmotorized (SUN) Trail Program

Systems Implementation Office  
605 Suwannee Street, MS 19  
Tallahassee, Florida 32399-0450

[FloridaSunTrail.com](https://FloridaSunTrail.com)

05/2025

