



## SUN Trail Funding Fact Sheet

# Palatka to St. Augustine State Trail

The Shared-Use Nonmotorized (SUN) Trail program funded construction of two projects in St. Johns county. Combined, they close the final 3.5-mile gap in the Palatka to St. Augustine State Trail. Built on a former railroad corridor north of State Road 207, this section of trail extends from the Putnam county line across from Merryfield Lane, east to Spuds. Highlights of the over \$6.6 million project include the trail bridge trestles over Deep Creek and Cracker Branch Creek. The first three-time winner of the Gold Medal honoring the nation's best state park system, the Florida Park Service manages the 19-mile Palatka to St. Augustine State Trail.

The project also includes the installation of a traffic control device, known as the pedestrian hybrid beacon (PHB), where the trail crosses State Road 207. When activated, the PHB assigns right-of-way to the trail visitor and provides positive stop control for the motorists, allowing them to proceed once the trail visitor has cleared their side of the travel lane, reducing vehicle delay. The beacon head, which faces the motorists, consists of two red lenses (lights) above a single yellow lens (lights). The lenses (lights) remain "dark" until a trail visitor pushes the call button to activate the beacon. The signal then initiates a yellow to red lighting sequence consisting of steady and flashing lights that directs motorists to slow and come to a stop. A signal facing the trail flashes a WALK display to the trail visitor to enter the crosswalk. Once the trail visitor has safely crossed, the hybrid beacon again goes dark.

Established during the 2015 legislative session and administered by the Florida Department of Transportation, the SUN Trail program receives \$25 million annually, from new vehicle tag fees, to expand the statewide system of paved multi-use trails (SUN Trail network) for bicyclists and pedestrians. The SUN Trail network aligns to the statewide Florida Greenways and Trails System Plan's Land Trail Priority network. Connecting St. Johns and Putnam counties, this project is integral to transportation in Florida, it is along major networks including:

- **St. Johns River-to-Sea Loop, which is a developing 260-mile regional trail system that will link the Tri-County Agritourism Corridor to the Space Coast.**  
See: [sjr2c.org](http://sjr2c.org)
- **A Complimentary Route of the East Coast Greenway, a developing 3,000-mile national trail system that will link communities along the eastern seaboard from Key West, Florida to Calais, Maine.**  
See: [www.greenway.org](http://www.greenway.org)
- **The Gullah Geechee Cultural Heritage Corridor, which is a federal National Heritage Area established by the U.S. Congress to recognize the unique culture of the people who resided in the coastal areas and the sea islands, from Pender county, North Carolina, to St. Johns county, Florida.**  
See: [www.gullahgeecheecorridor.org/?Itemid=102](http://www.gullahgeecheecorridor.org/?Itemid=102)



To visit the trail or for more information, please contact:

Florida Park Service • 386-329-3721 • [www.floridastateparks.org/trail/Palatka-Augustine](http://www.floridastateparks.org/trail/Palatka-Augustine)

# PROJECT AT-A-GLANCE

## TRAIL

**FDOT DISTRICT NUMBER:** 2      **LENGTH:** 3.5 miles  
**CITIES:** Hastings and Spuds      **SURFACE TYPE:** Asphalt  
**COUNTY:** St. Johns  
**WIDTH:** 12 feet

## PROJECT

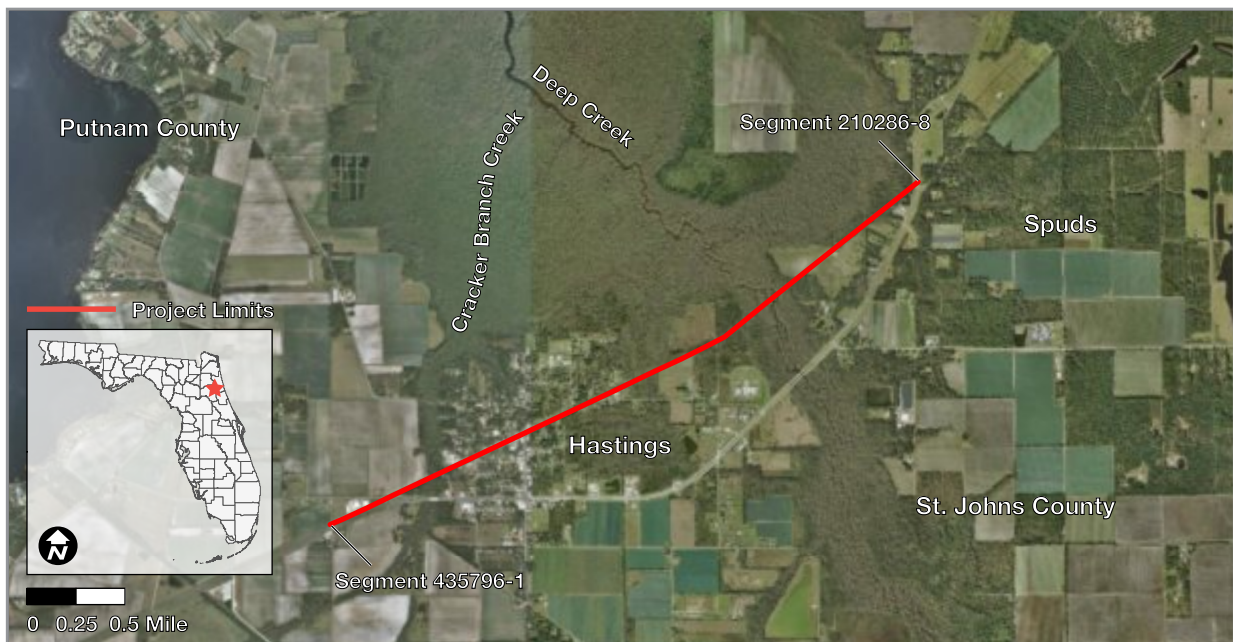
**FINANCIAL MANAGEMENT (ITEM) NUMBERS:** 210286-8, 435796-1  
**LIMITS:** Built on a former railroad corridor along the northside of State Road 207, the projects extend from the Putnam county line across from Merryfield Lane, east to Spuds.  
**CONSTRUCTION START:** September 2017  
**CONSTRUCTION COMPLETION:** December 2018  
**PHASES:** Construction and Construction Engineering Inspections

## FUNDING

**FISCAL YEARS:** 2017, 2018, 2019  
**AMOUNT:** \$6,667,319 was awarded by the SUN Trail program. Within the project boundary, an additional \$1,979,045 was provided by FDOT and federal sources beginning in 2011.



*The pedestrian hybrid beacon, mounted on a mast arm, is designed to alert motorists and help trail visitors safely cross State Road 207*



## Florida Department of Transportation Shared-Use Nonmotorized (SUN) Trail Program

Systems Implementation Office  
605 Suwannee Street, MS 19  
Tallahassee, Florida 32399-0450

[FloridaSunTrail.com](http://FloridaSunTrail.com)