



Systems Implementation Office

Statewide Access Management

WEBINAR SERIES

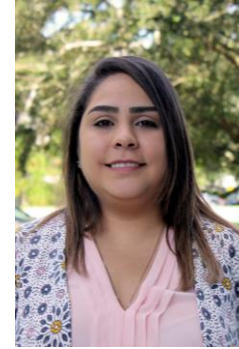
Webinar Staff



Gina Bonyani



Maria Overton



Karla Matos

Agenda

How to Participate

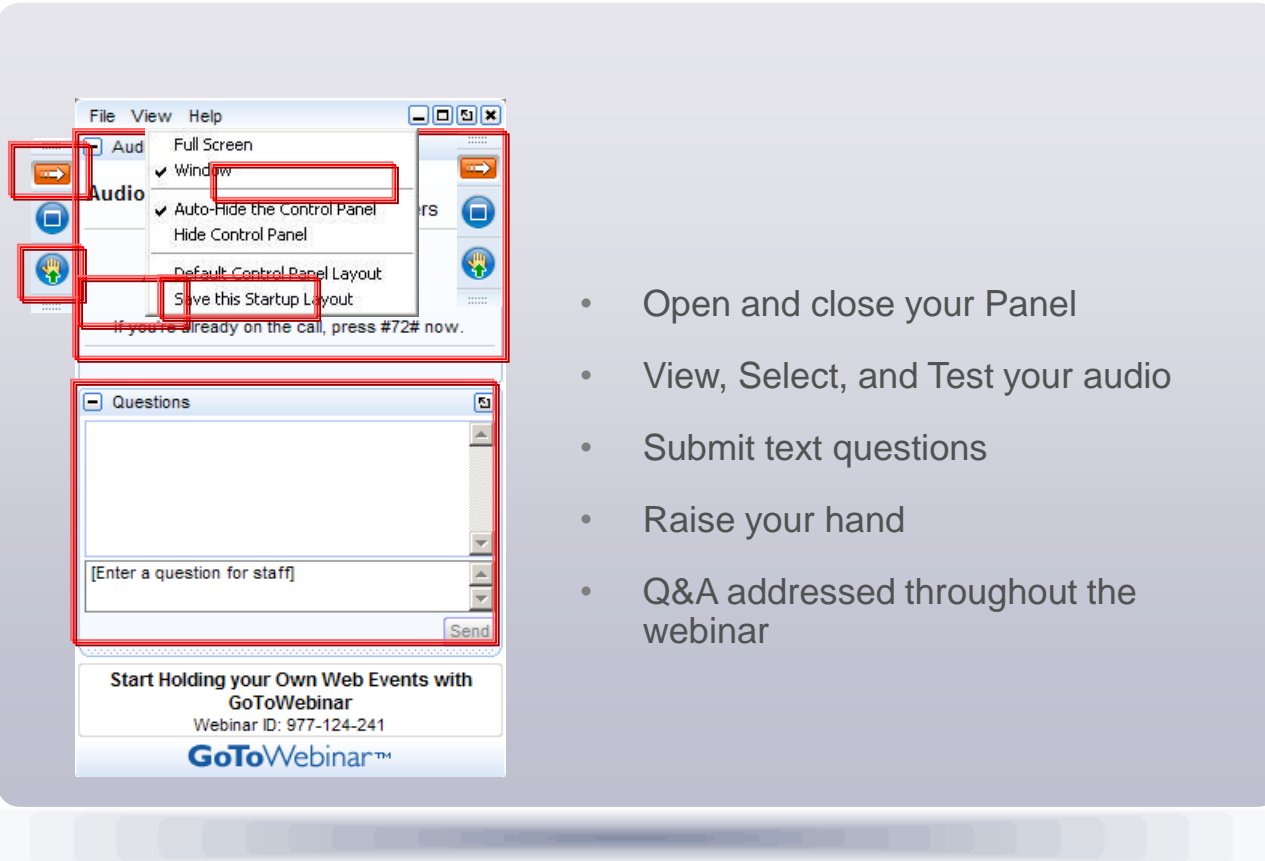
Credits and Webinar Material

Introduction to Access
Management

Questions

Contact Info

How to Participate Today



The screenshot displays the GoToWebinar interface. The 'Audio' menu is open, showing options: 'Full Screen', 'Window' (checked), 'Auto-Hide the Control Panel' (checked), 'Hide Control Panel', 'Default Control Panel Layout', and 'Save this Startup Layout'. A red box highlights the 'Audio' button on the left. Another red box highlights the 'Window' option in the menu. A third red box highlights the 'Questions' panel below the menu. The 'Questions' panel has a text input field with the placeholder '[Enter a question for staff]' and a 'Send' button. At the bottom, there is a banner for 'Start Holding your Own Web Events with GoToWebinar' and the Webinar ID: 977-124-241.

- Open and close your Panel
- View, Select, and Test your audio
- Submit text questions
- Raise your hand
- Q&A addressed throughout the webinar



Statewide Access Management

— WEBINAR SERIES —

The FDOT Access Management Webinar Series 2019-2020 have been scheduled for the following dates:

Tue, Aug, 27, 2019 | 2:00PM - 3:30PM EDT

NEXT! Tue, Nov 12, 2019 | 2:00PM - 3:30PM EST

Tue, Feb 11, 2020 | 2:00PM - 3:30PM EST

Tue, May 12, 2020 | 2:00PM - 3:30PM EDT

Learning Curve

FDOT's Systems Implementation Office is utilizing the **Learning Curve** system for participant communications and management of the Statewide Access Management Quarterly Webinar.



Credits Information

- Credits will be distributed four to **five** business days after the webinar, through [Learning Curve](#).
 - PDH's Credits, AICP Credits Information, and Course Certificates
- Your participation will be recorded by [GoToWebinar](#).
 - You will need to attend to the **entire webinar** with the ***unique link*** provided by GoToWebinar.

Webinar Material

- Webinar materials will be sent via the **Learning Curve System**.
- Recorded webinars and presentation material will be posted on the Systems Implementation Office website:
 - [Training & Webinars](#)
 - Access Management





Poll Questions

**What
organization
do you
Represent?**

FDOT

Local Government

Private Firm

Other

**How familiar
are you with
Access
Management?**

Very Familiar

Somewhat Familiar

Not Familiar



Statewide Access Management

WEBINAR

Today's Webinar

Introduction to Access Management

Tuesday, August 27, 2019

2:00PM – 3:30 PM, EDT

Credits: 1.5

Speaker:

Gina Bonyani, *Transportation Planner* | FDOT

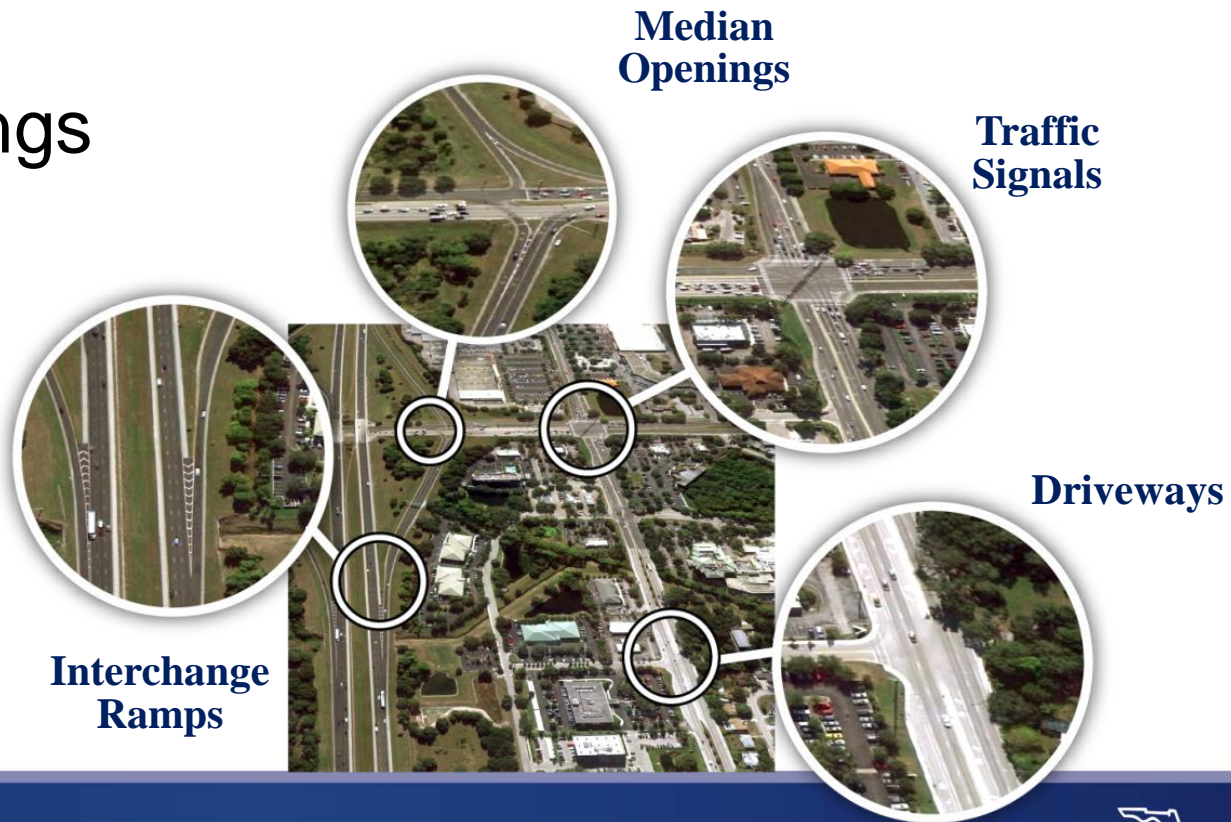


What is Access Management

- Access management involves the location, spacing, and design of driveways, medians, median openings, traffic signals, and interchanges.
- The roadway network must be viewed as a system of all the features mentioned above, not as one isolated element.

Components

- Driveways
- Medians
- Median openings
 - Full access
 - Directional
- Signals
- Interchanges



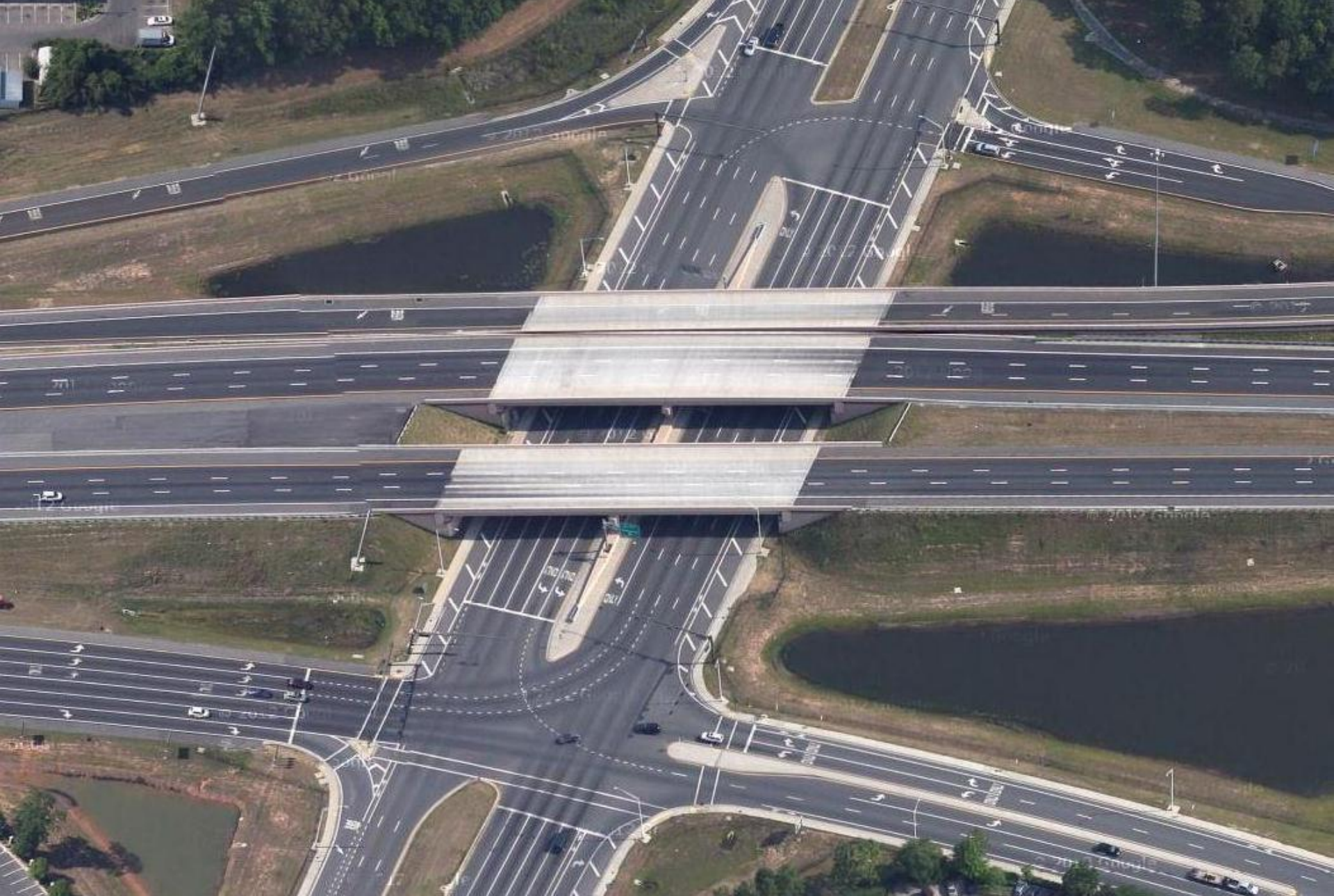












Why is Access Management Important?

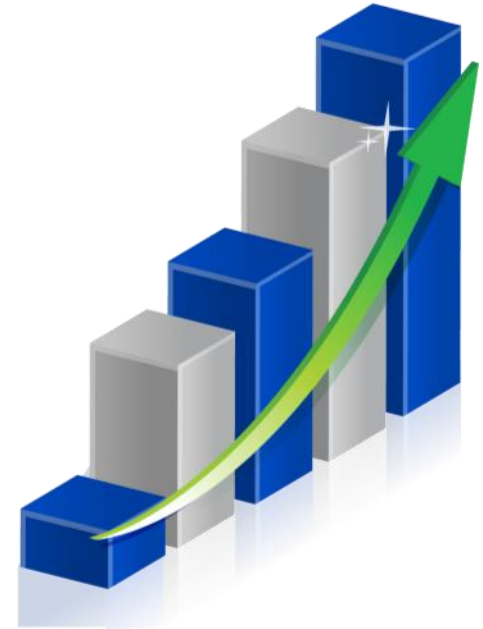
- Access management provides safe and efficient
- transportation facilities for all roadway users



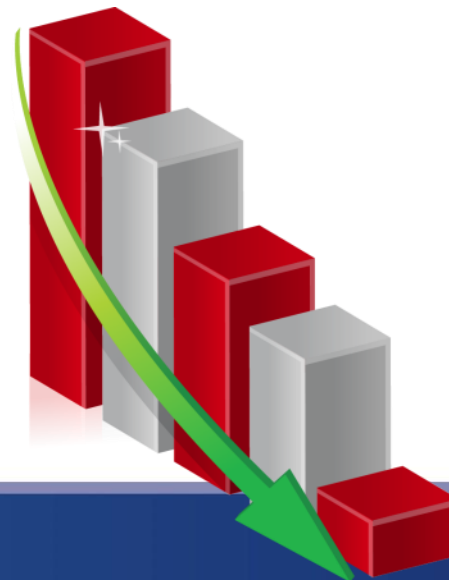
Benefits

- Access management helps to:
 - Reduce conflicts
 - Enhance safety
 - Lessen severity of crashes
 - Improve mobility
 - Increase connectivity
 - Develop aesthetics

As driveways increase,
crashes increase



As driveways increase,
capacity decreases



Goals

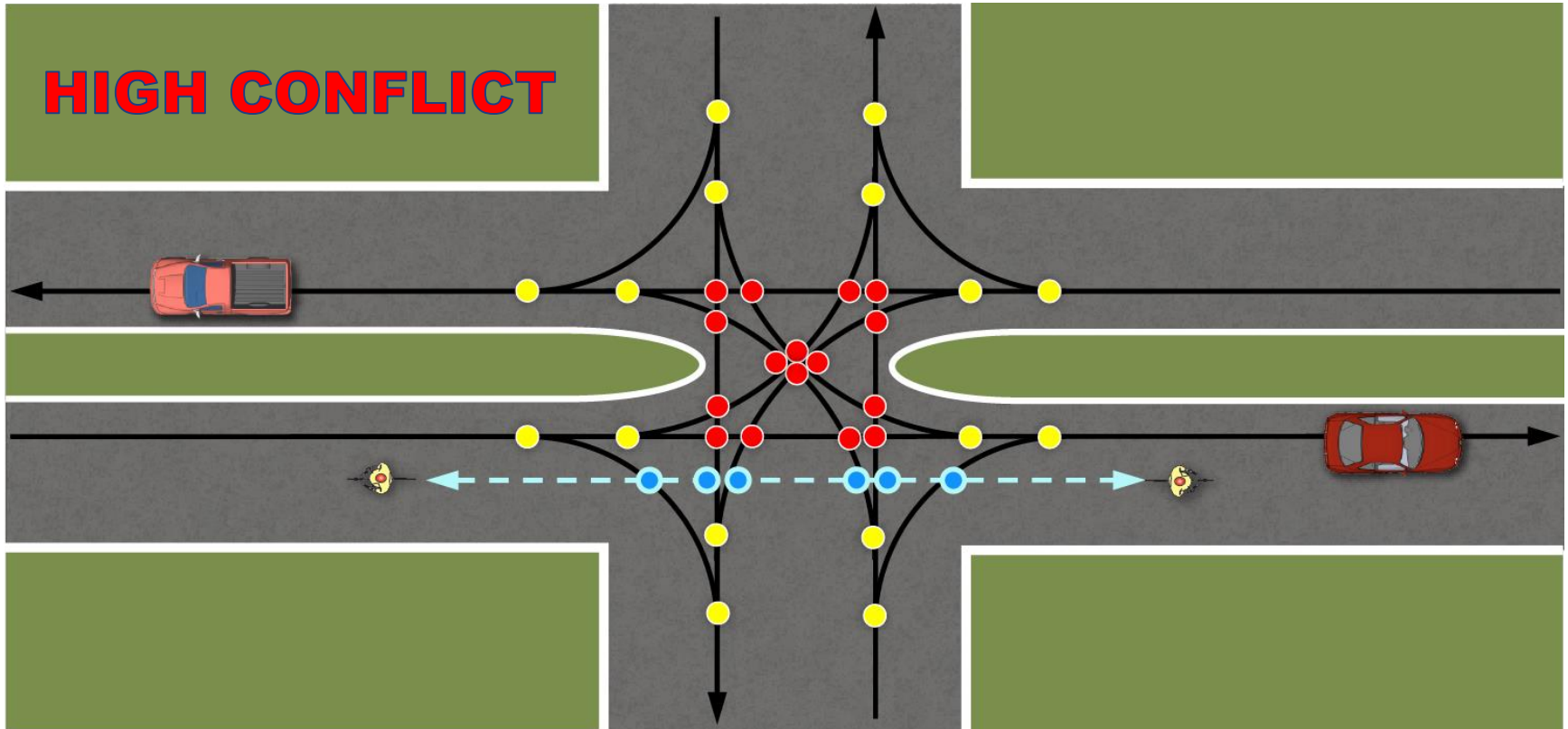
- Passenger cars
- Pedestrians
- Cyclists
- Transit
- Trucks





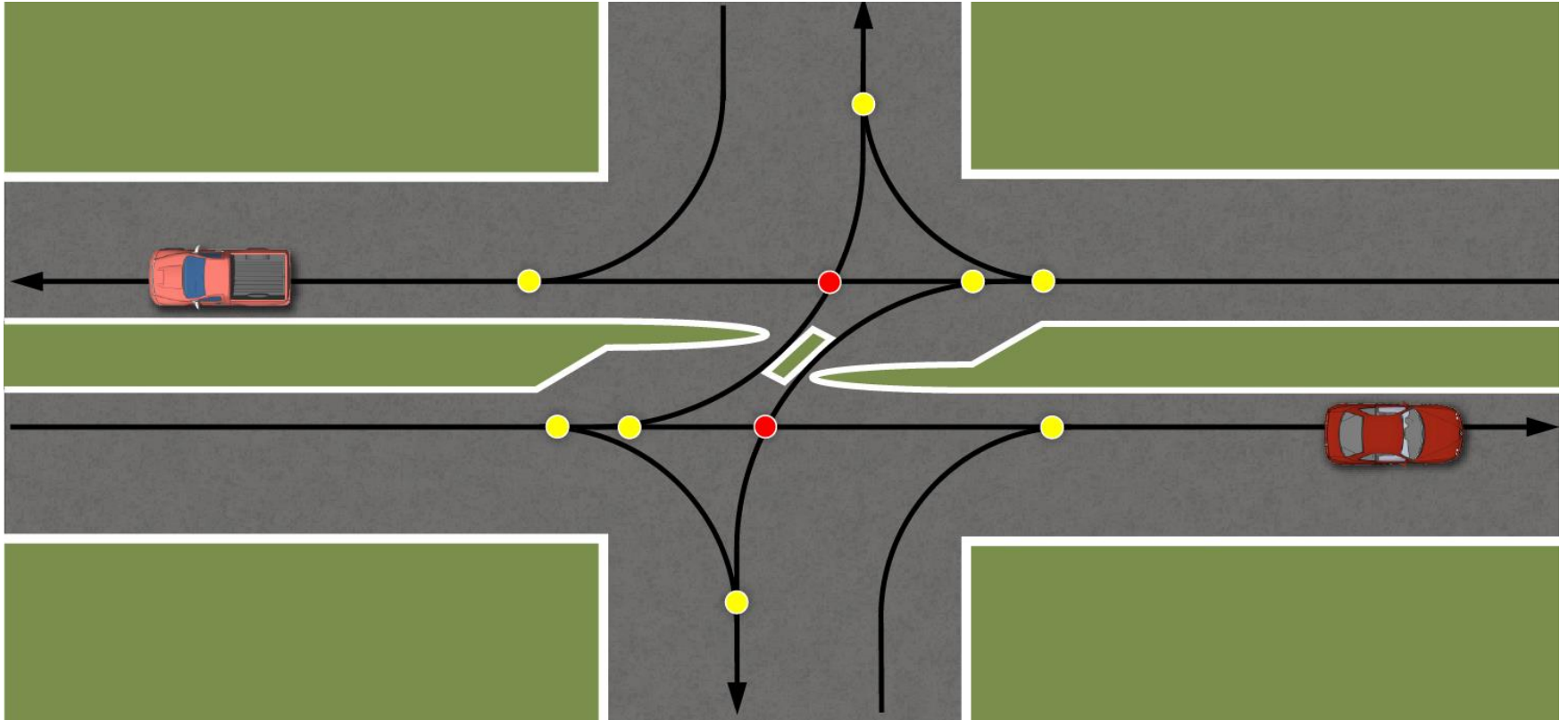


Conflict Points



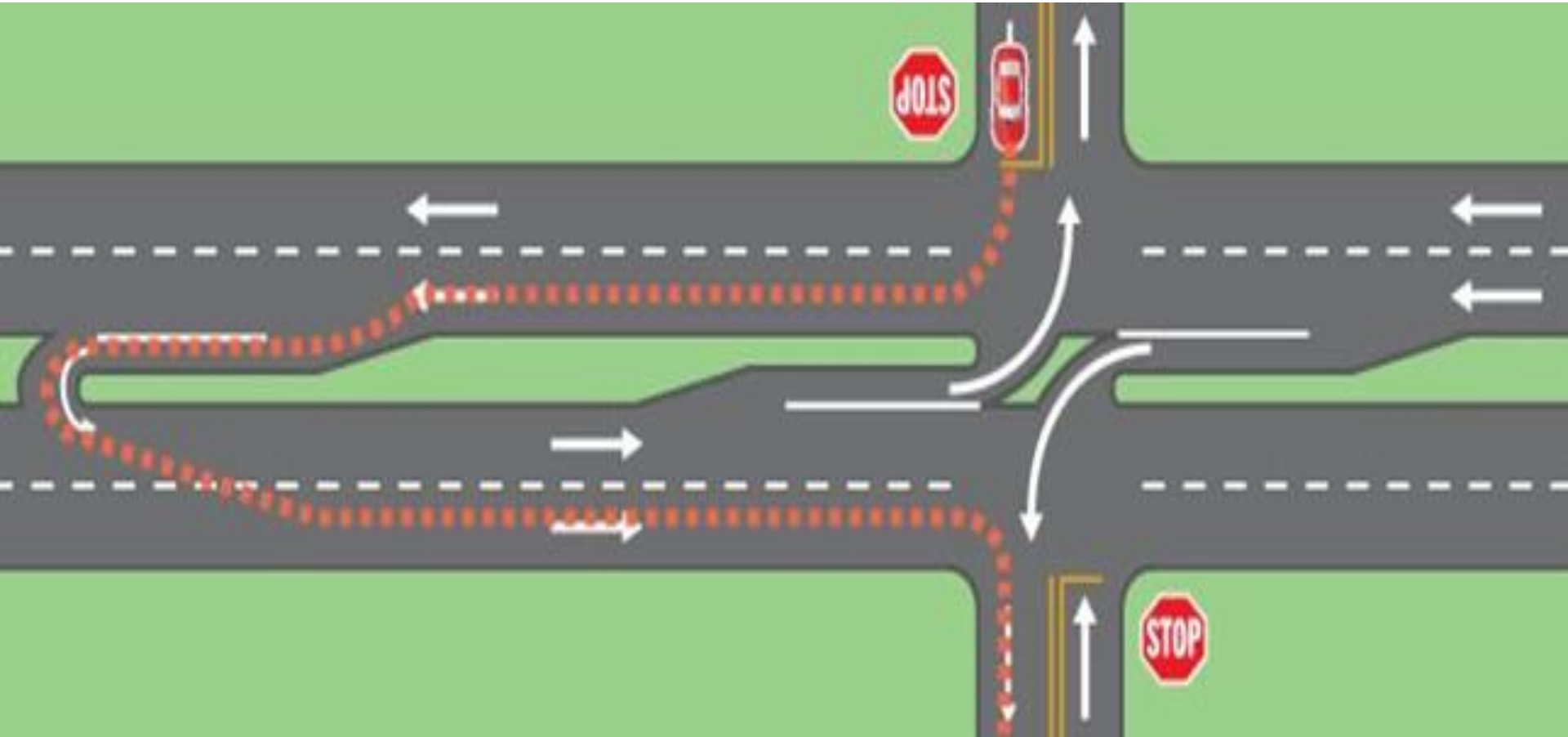
Full unsignalized median opening

Less Conflict Points



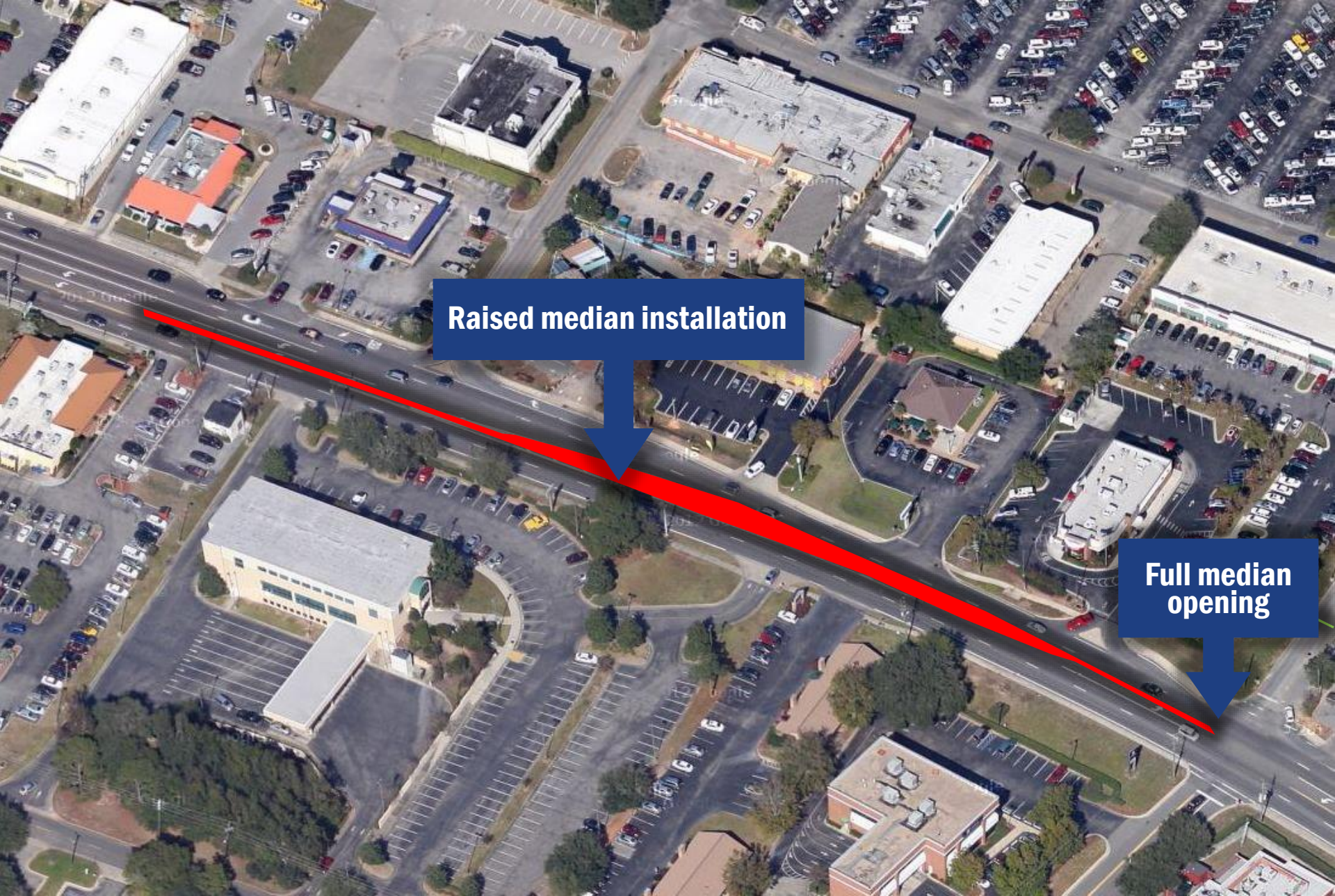
Directional median opening

RCUT(Restricted Crossing U-Turn)



Guiding Principles

- Limit the number of conflict points
 - Reduce the number of median openings
 - Provide directional median openings
 - Consolidate driveways to reduce frequency
- Look at conflict points from a network perspective



Raised median installation

Full median opening

Guiding Principles

- Separate the conflict points for all modes of transportation
 - Driveway spacing
 - Median opening spacing
 - Traffic signal spacing
 - Distance of driveway/median opening/signal from interchange ramps



X DRIVEWAYS

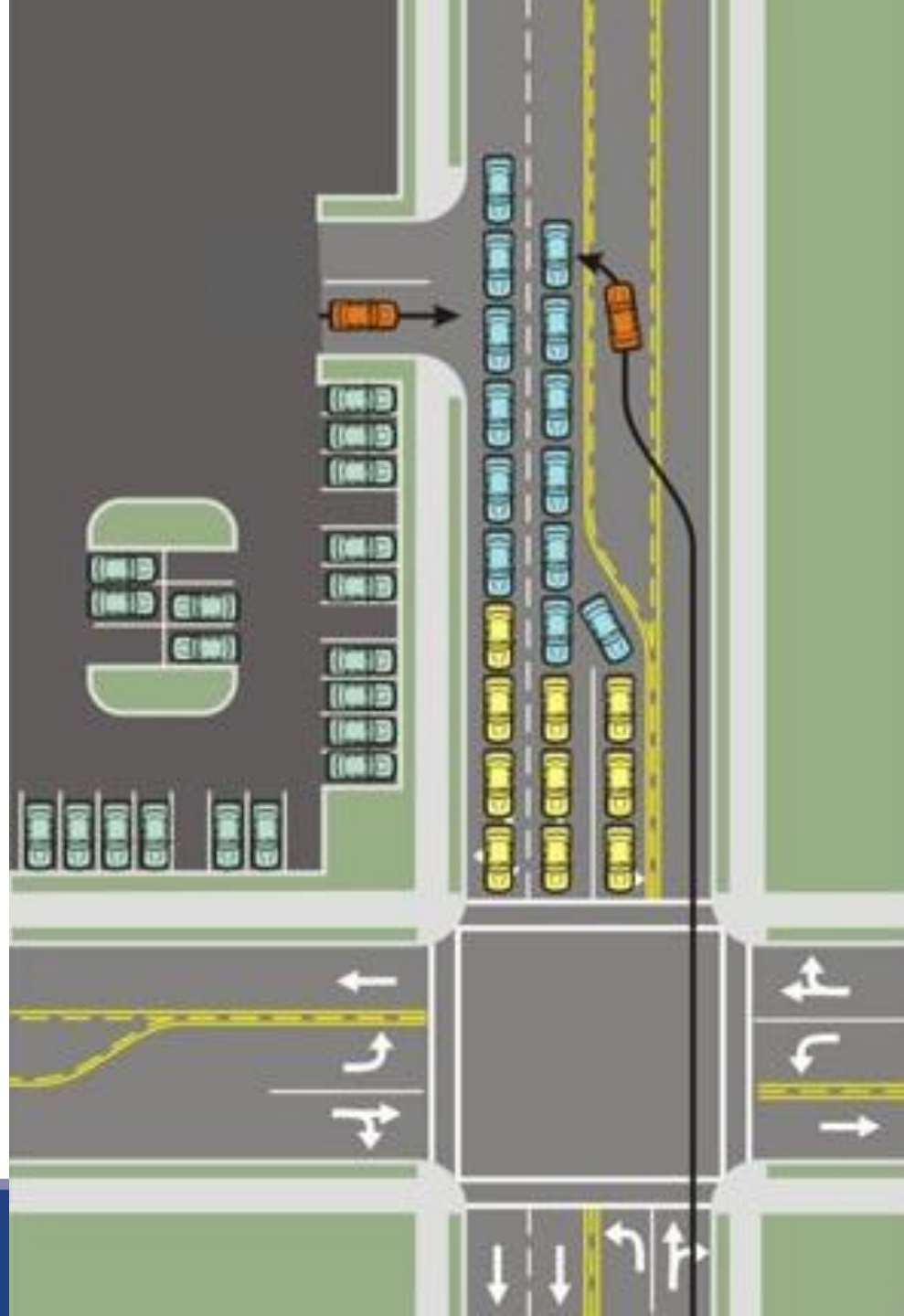


**CONSOLIDATED
DRIVEWAYS**

Separating Conflict Points

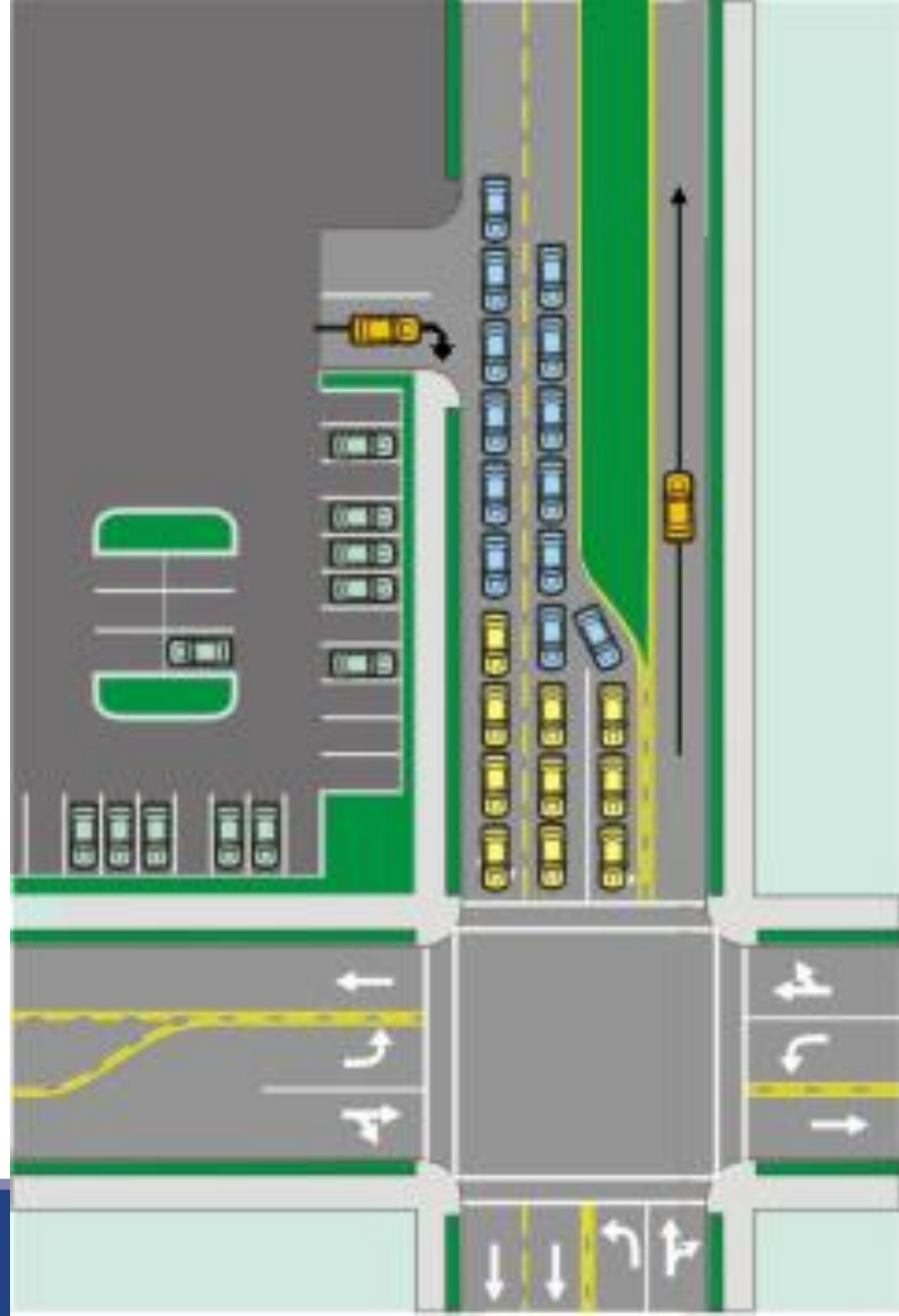
Site Circulation

- Vehicular Queuing
 - Existing Traffic Conditions
 - Future Traffic Conditions



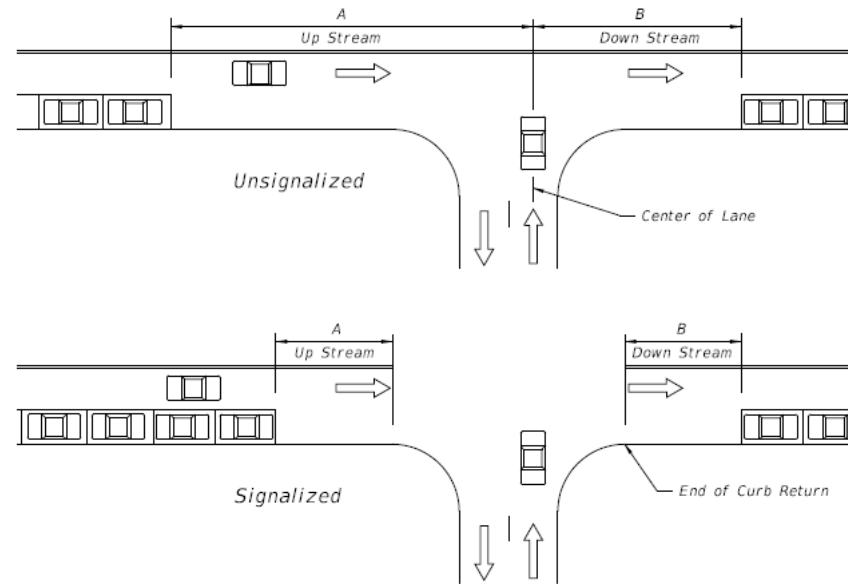
Site Circulation

- Vehicular Queuing
 - Existing Traffic Conditions
 - Future Traffic Conditions
- Median Modification
 - Eliminates main street left turn access
 - Side street right in/right out



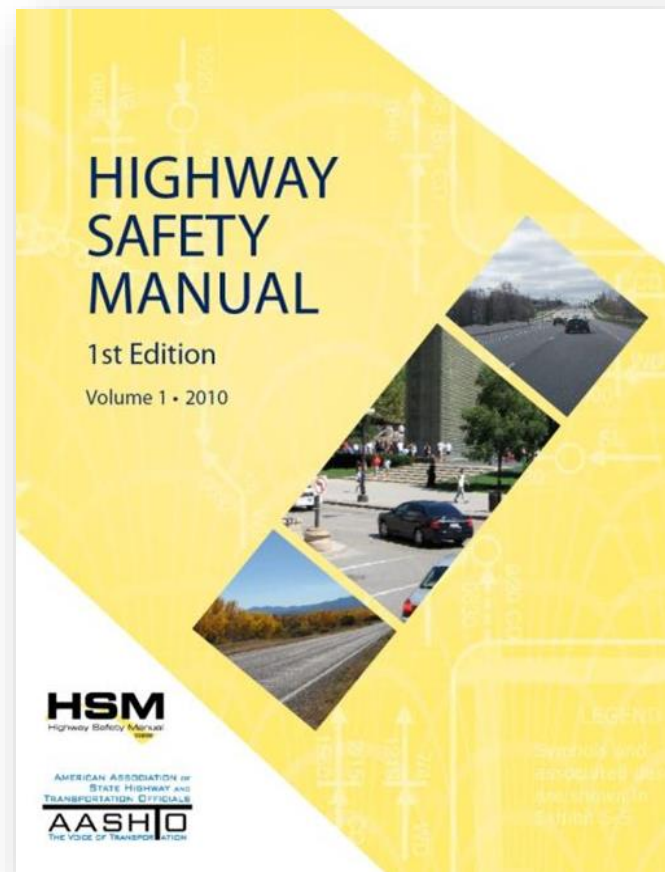
Parking Restrictions

Control Type I	Posted Speed (mph)	A - Up Stream (ft)	B – Down Stream (ft)	
			2-Lane	4-Lane or more
Unsignalized	< 35	90	60	45
	35	105	70	50
Signalized	< 35	30	30	30
	35	50	50	50



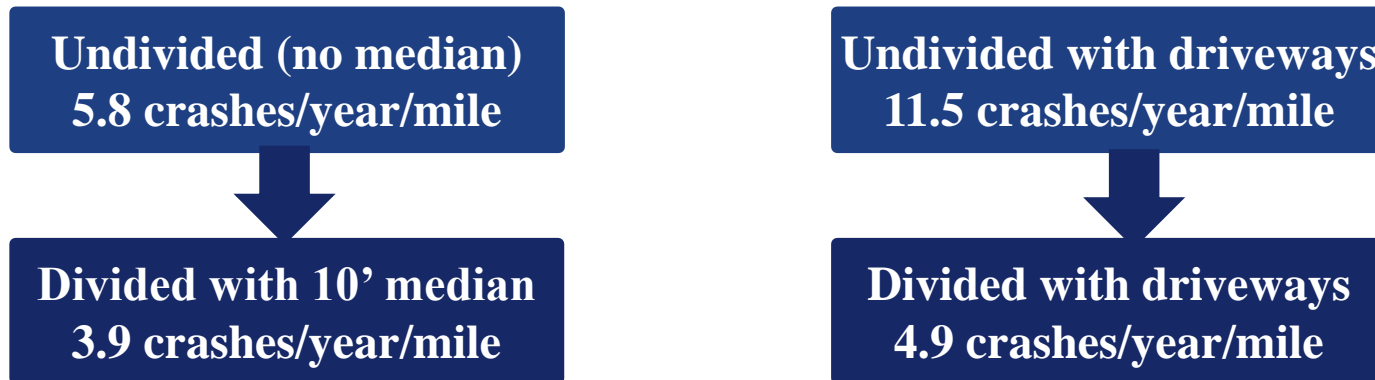
Highway Safety Manual

- Methodologies for predicting average crash frequency given certain roadway characteristics
- Factors to be applied to reduce crashes



Highway Safety Manual

- Example: suburban 4-lane arterial at 45 mph



Highway Safety Manual

- Crash Modification Factors
 - CMF is the percentage of crashes remaining after an improvement, i.e. 0.90 means 10% reduction in crashes
 - Examples of factors for access management improvements:

Add Median
CMF=0.75
25% fewer crashes

Widen Median 10ft.
CMF=0.85
15% fewer crashes

Reduce Access Points
CMF=0.70
30% fewer crashes

Install Signal
CMF=0.75
25% fewer crashes



John McWilliams, South Florida

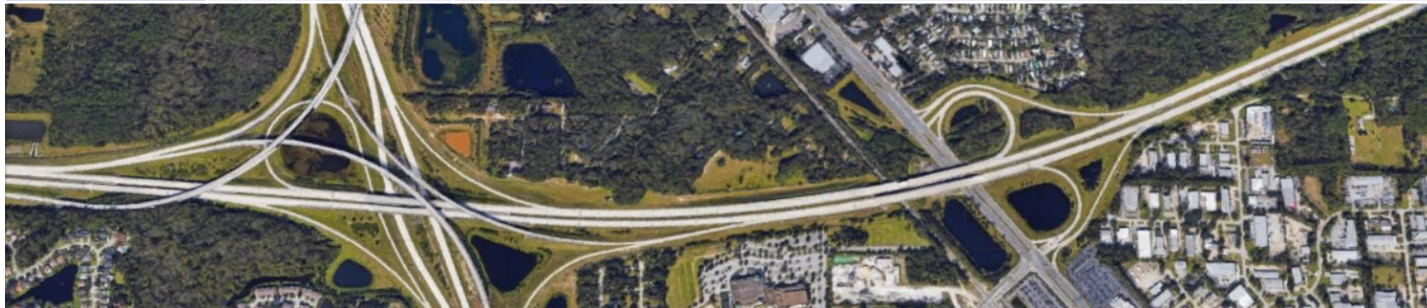
What are the Access Management Standards?

The FDOT Access Management standards are established in Florida Administrative Code Chapter 14-97, otherwise known as Rule 14-97.

Rule 14-97: Table 1

Access
Management
Standards for
Limited Access
Facilities

Access Class	Area Type	Segment Location	Interchange Spacing (MILES)
1	Area Type 1	CBD & CBD Fringe For Cities In Urbanized Areas	1.0
	Area Type 2	Existing Urbanized Areas Other Than Area Type 1	2.0
	Area Type 3	Transitioning Urbanized Areas And Urban Areas Other Than Area Type 1 or 2	3.0
	Area Type 4	Rural Areas	6.0



Rule 14-97: Table 2

Access
Management
Standards for
Arterials

Access Class	Medians	Connection Spacing (FEET)		Median Opening Spacing (FEET)		Signal Spacing (FEET)
		> 45 mph	≤ 45 mph	Directional	Full	
2	Restrictive with Service Roads	1320	660	1320	2640	2640
3	Restrictive	1320	660	1320	2640	2640
4	Non-Restrictive	660	440			2640
5	Restrictive	440	245	660	*2640/ 1320	*2640/ 1320
6	Non-Restrictive	1320	245			1320
7	Both	125		330	660	1320

Typically Undeveloped

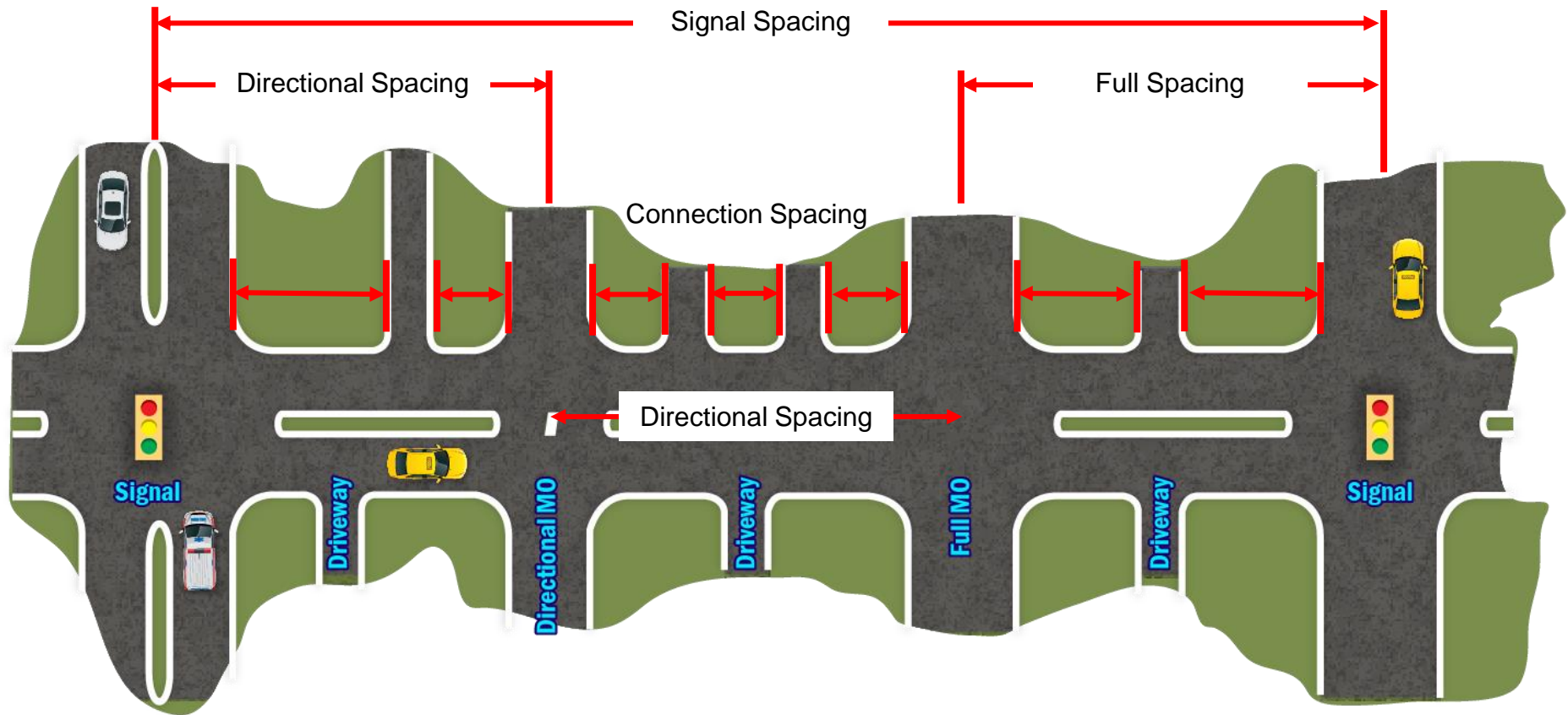
Typically Developed

*2640 feet for > 45 mph; 1320 feet for <45mph

"Restrictive"= Physically prevent vehicle crossing

"Non-Restrictive"= Allow turns across at any point

Measuring Spacing



Right to Access

- Must provide reasonable access to roadway
 - What does “reasonable” mean?
 - How is it defined?
 - Does everyone get a driveway?
- An owner has a right to property access but not a right to direct left turn.



FDOT Procedures

Systems Implementation
Office

Topic No. 625-010-021-h:
Median Openings and Access
Management

Under Review!



Approved:
Office: Systems Planning
Topic No.: 625-010-021-h

Department of Transportation

MEDIAN OPENINGS AND ACCESS MANAGEMENT

PURPOSE:

This procedure provides direction on applying the standards in *Rule 14-97.003, Florida Administrative Code (F.A.C.)*. This procedure also addresses access management decisions beyond the project or staff level. This procedure is intended to promote the consistent application of access management engineering practice throughout the Florida Department of Transportation (Department).

FOR FURTHER INFORMATION, CONTACT:

Florida Department of Transportation, Systems Planning Office, 605 Suwannee Street, Mail Station 19, Tallahassee, Florida 32399 or call the Forms and Procedures Office for the appropriate contact (850) 414-4450.

AUTHORITY:

Sections 20.23(4)(a) and 334.048(3), Florida Statutes (F.S.)

SCOPE:

This procedure guides District staff in making median opening and access management decisions. There is also guidance for staff as well as for the District Access Management Review Committees (AMRC).


REFERENCES:

- Sections 335.18 -188 (F.S.), State Highway System Access Management Act
- Section 335.199, (F.S.) (Transportation Projects modifying access to adjacent properties)
- Rule Chapter 14-96, Florida Administrative Code (F.A.C.) State Highway System Connection Permits
- Rule Chapter 14-97, F.A.C. State Highway System Access Control Classification System and Access Management Standards Median Handbook (Systems Planning Office)
- Driveway Information Guide (Systems Planning Office)

Procedures

- Each district shall have an Access Management Review Committee (AMRC) to review deviations from spacing standards of more than 10%
- The AMRC is appointed by the District Secretary and consists of head level positions (District Design Engineer, District Planning Manager, etc.) and meetings are given public notice





650 ft spacing
= 1.5% deviation

This aerial photograph shows a multi-lane road intersection. Two specific locations are highlighted with blue squares and labeled 'Site A' and 'Site B'. Red lines and arrows indicate the spacing between these sites and the intersection. The background includes various buildings, parking lots, and greenery.

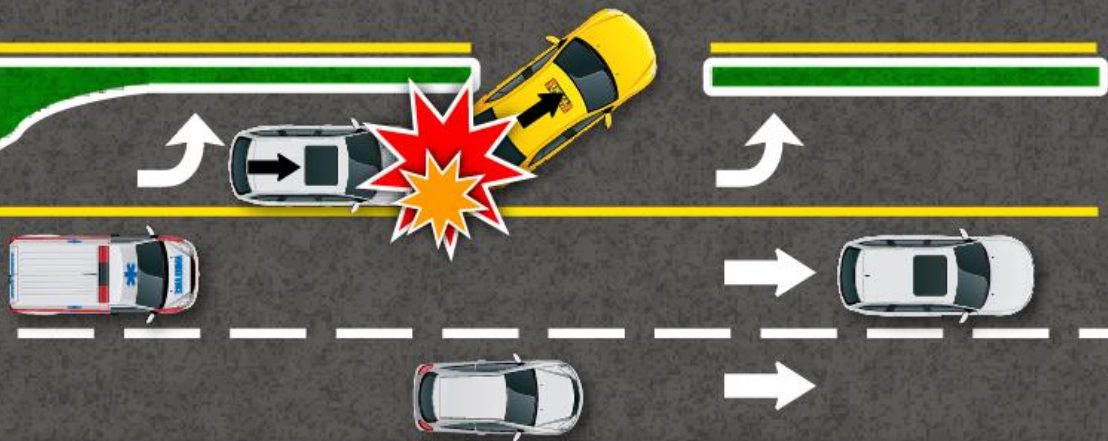
560 ft spacing
= 15% deviation

Site A

Site B

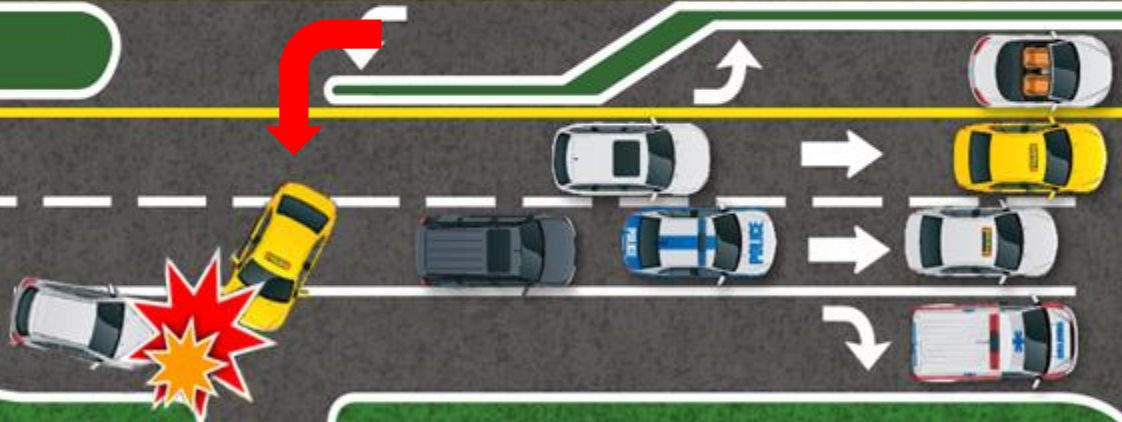
Site B must be reviewed by AMRC

Procedures



**Avoid median openings
across left-turn lanes**

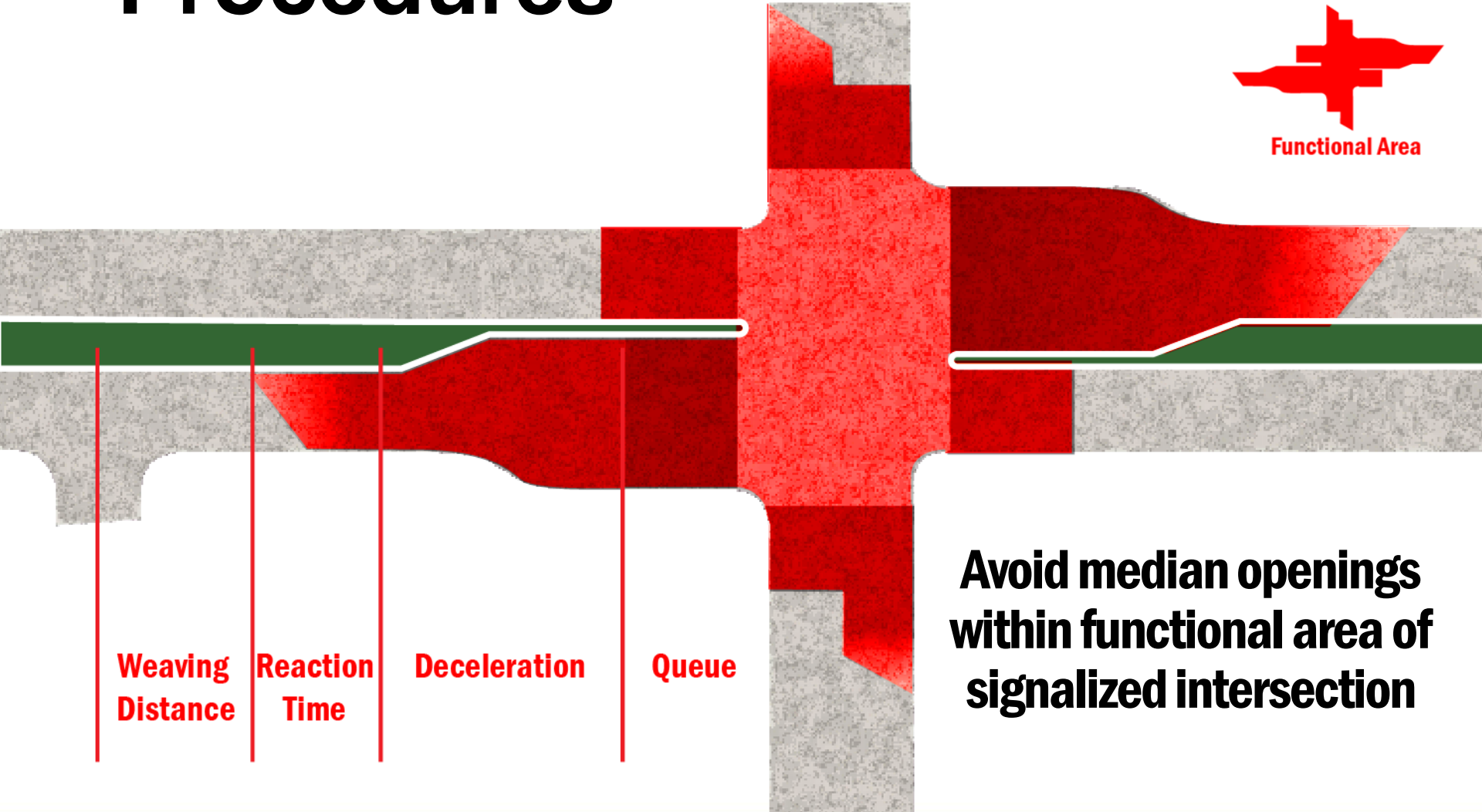
Procedures



**Avoid median openings
across right-turn lanes**

[illegible][illegible]

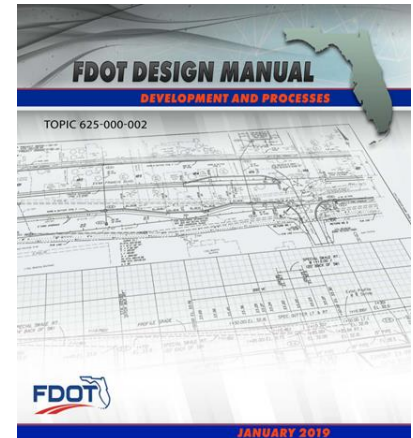
Procedures



**Avoid median openings
within functional area of
signalized intersection**

Design criteria and Rules

- FDM Chapter 214 provides driveway design criteria and requirements for connections to the State Highway System.



Florida Department of State
Florida Administrative Code & Florida Administrative Register

Rule Chapters: 14-97

Chapter Title: STATE HIGHWAY SYSTEM ACCESS CONTROL CLASSIFICATION SYSTEM AND ACCESS MANAGEMENT STANDARDS

View Chapter: 14-97

View Individual Rules

Latest Version	Rule No.	Rule Title	Effective Date
	14-96.001	Purpose	10/7/2009
	14-96.002	Definitions	10/7/2009
	14-96.003	Access Control Classification System and Access Management Standards	10/7/2009
	14-96.004	Interim Access Management Standards	10/7/2009
	14-96.005	Review and Modification of Access Control Classifications	10/7/2009

Home | Advanced Search | Help/FAQs | Rules Open for Comments | About Us | Contact Us | Help

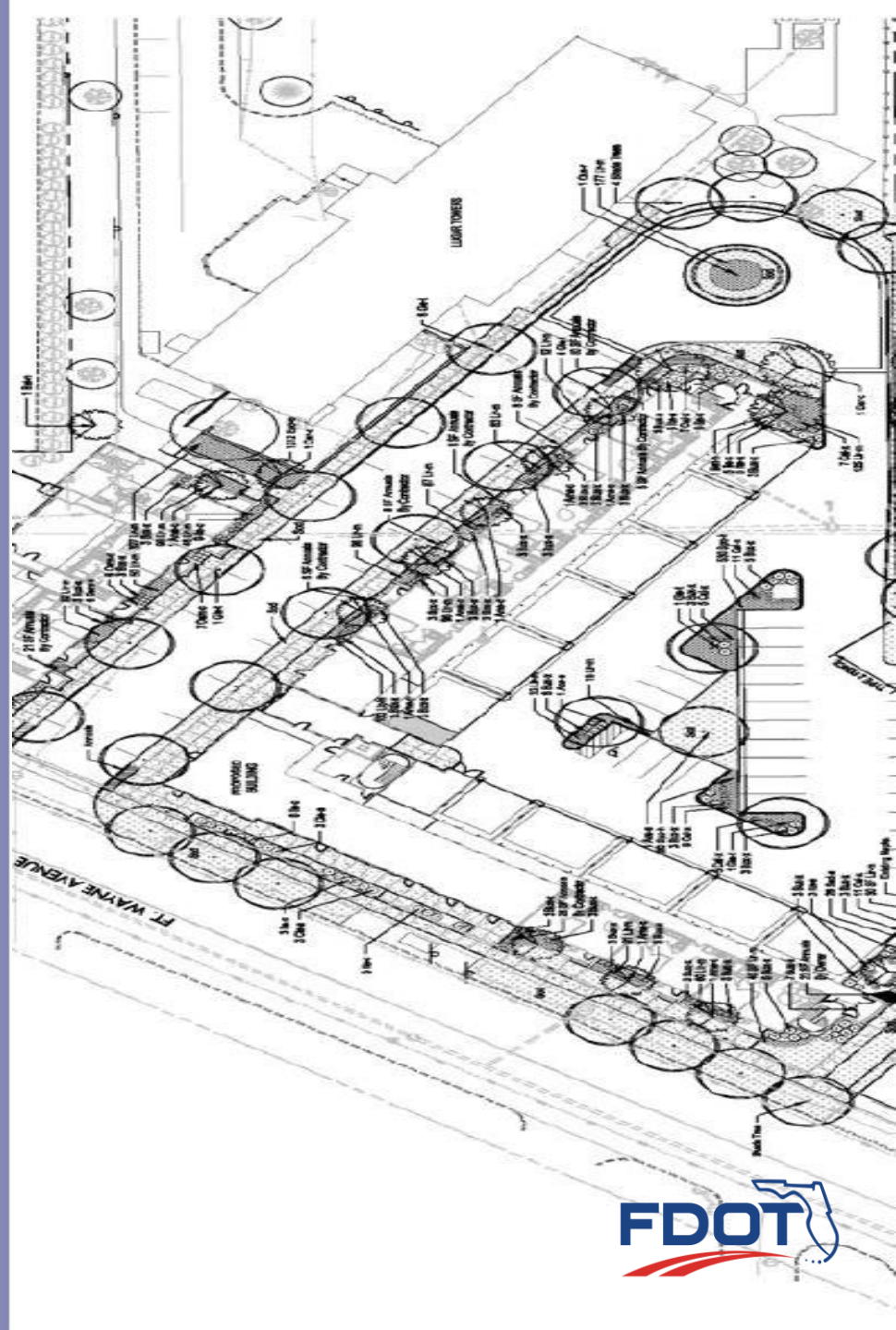
Copyright and Privacy Policies | Accessibility Statement

Copyright © 2010 State of Florida - Department of State

Under Florida law, E-mail addresses are public records. If you do not want your E-mail address released in response to a public records request, do not send electronic mail to this office. Instead, contact this office by phone or in writing.

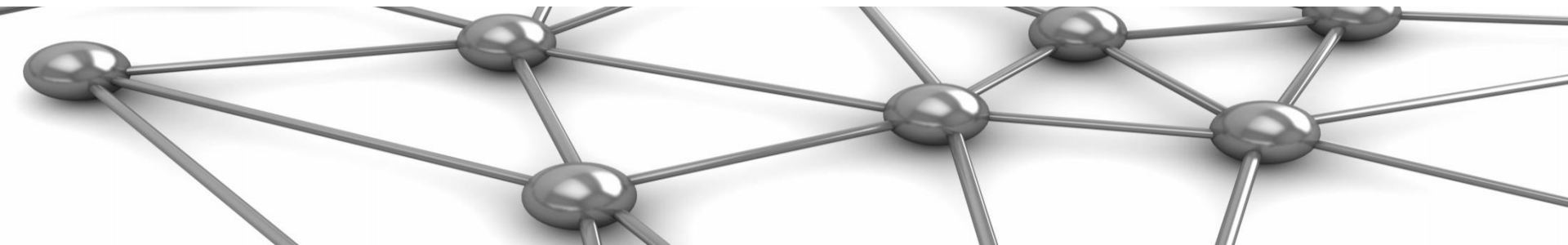
- Florida Administrative Code (F.A.C.):
 - Rule 14-96 (State Highway Connection Permits)
 - Rule 14-97, F.A.C. (State Highway System Access Control Classification System and Access Management Standards).

Successful access management involves more than regulation of median openings and driveways; it can also be achieved by thoughtful planning during the site design process and coordination with developers.



Inter-Parcel Access

- Inter-parcel access can be developed between adjacent parcels or large multi-use properties
 - Improves connectivity
 - Reduces number of driveways on major streets
 - Enhances bicycle/pedestrian access





**Adjacent
Development**

Plaza

1

2

3

4

5

6

One driveway serves Walgreens, McDonalds, and **two** service stations





No driveways

This is an aerial photograph of a commercial district in Cape Coral, Florida. A red-shaded boundary outlines a specific area. Within this area, three blue circles are placed on the roadways. The area contains several businesses, including a bank, a supermarket, and various restaurants. Major roads like US Highway 78 and Santa Barbara Blvd are visible. A blue callout box with the text 'No driveways' points to the red boundary line.



**Unconnected
development
entrances**



**Leads to a
unified
development**



Concept Illustrations

Some examples of actual facilities with good design and some with only vehicles in mind.

Can you tell which is good and which is bad?







Intersection

Driveway

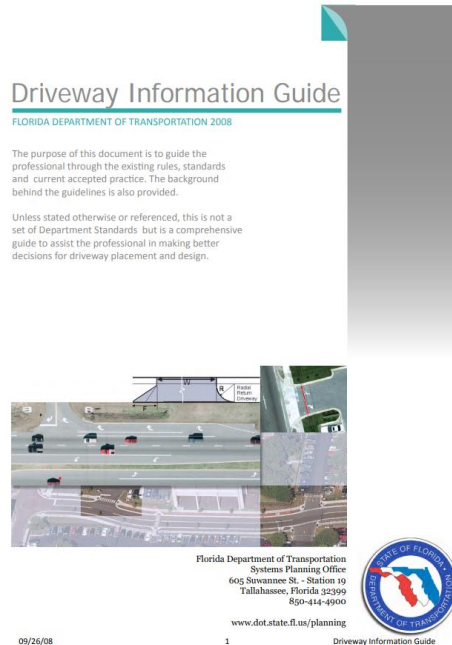




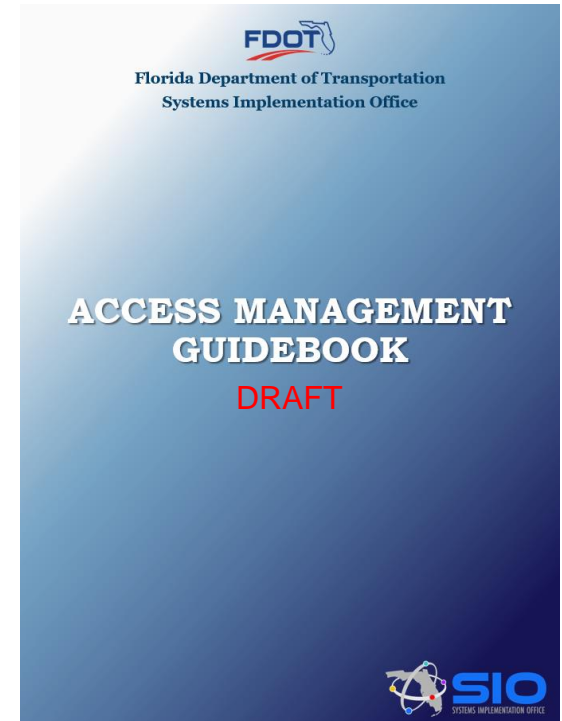




Median Handbook



Driveways Information Guide



Access Management Guidebook

Guides Being Combined

Resources

FDOT, Access Management Guidebook
(Driveway and Median)

<https://www.fdot.gov/planning/systems>

Florida Design Manual

<https://www.fdot.gov/roadway/fdm/default.shtm>

FHWA Access Management

https://ops.fhwa.dot.gov/access_mgmt/index.htm

Questions



Gina Bonyani

Transportation Planner- FDOT

Gina.Bonyani@dot.state.fl.us

Course Details

- Survey through GoToWebinar
- FDOT FBPE Provider Number: 0003533
- APA Course Web Page <https://www.planning.org/events/eventsingle/9182414/>
- APA Course Number: 9182414
- AICP/PDH Credits Provided: 1.50

Contact Info

- Gina.Bonyani@dot.state.fl.us
- Maria.Overton@dot.state.fl.us
- Karla.Matos@dot.state.fl.us