

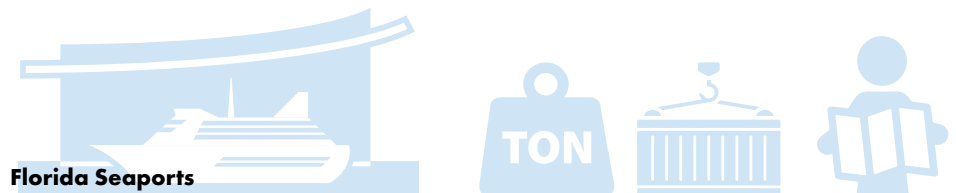


Strategic Intermodal System Seaports

To plan for an efficient and safe transportation network in Florida, the state legislature and Florida Department of Transportation (FDOT) developed the Strategic Intermodal System (SIS). As part of the SIS, there are specific elements that have been identified as critical to the economic success of Florida. One of these elements are seaports, which enable easier travel of international freight cargo and provide access for cruise lines throughout the State of Florida.

The adjacent table lists all the seaports within Florida and their SIS designations as defined by the criteria established by FDOT. The criteria for designating a seaport as SIS can be found in the table footnotes.

Review the [SIS Criteria](#) for more information.



Florida Seaports

Facility Name	District	Designation	Tons ¹	TEUs ²	Cruise Passengers ³
JAXPORT	2	SIS	20,716,793	1,358,756	194,665
Port Canaveral	5	SIS	6,329,095	1,490	4,634,154
Port Everglades	4	SIS	25,625,659	1,053,078	3,773,062
Port Manatee	1	SIS	9,580,122	57,255	0
Port of Citrus	7	Not Designated	0	0	0
Port of Fernandina	2	Strategic Growth	685,000	15,000	0
Port of Fort Pierce	4	Strategic Growth	4,074	0	0
Port of Key West	6	Not Designated	0	0	0
Port of Palm Beach	4	SIS	2,308,509	279,900	449,457
Port of Pensacola	3	Strategic Growth	211,290	900	0
Port of Port St. Joe	3	Strategic Growth	0	0	0
Port of St. Petersburg	7	Not Designated	0	0	0
Port Panama City	3	SIS	1,753,963	35,750	0
Port Tampa Bay	7	SIS	34,462,971	105,663	1,149,289
PortMiami	6	SIS	10,121,570	1,120,913	6,781,880

¹ SIS Criteria: ≥ 1% of Florida total – annual freight volume measured in tons

² SIS Criteria: ≥ 1% of Florida total – annual container volume measured in twenty-foot equivalent units (TEUs)

³ SIS Criteria: ≥ 250,000 annual multi-day home-port cruise ship passengers

Source: Florida Ports Council 2018-2022 Mission Plan

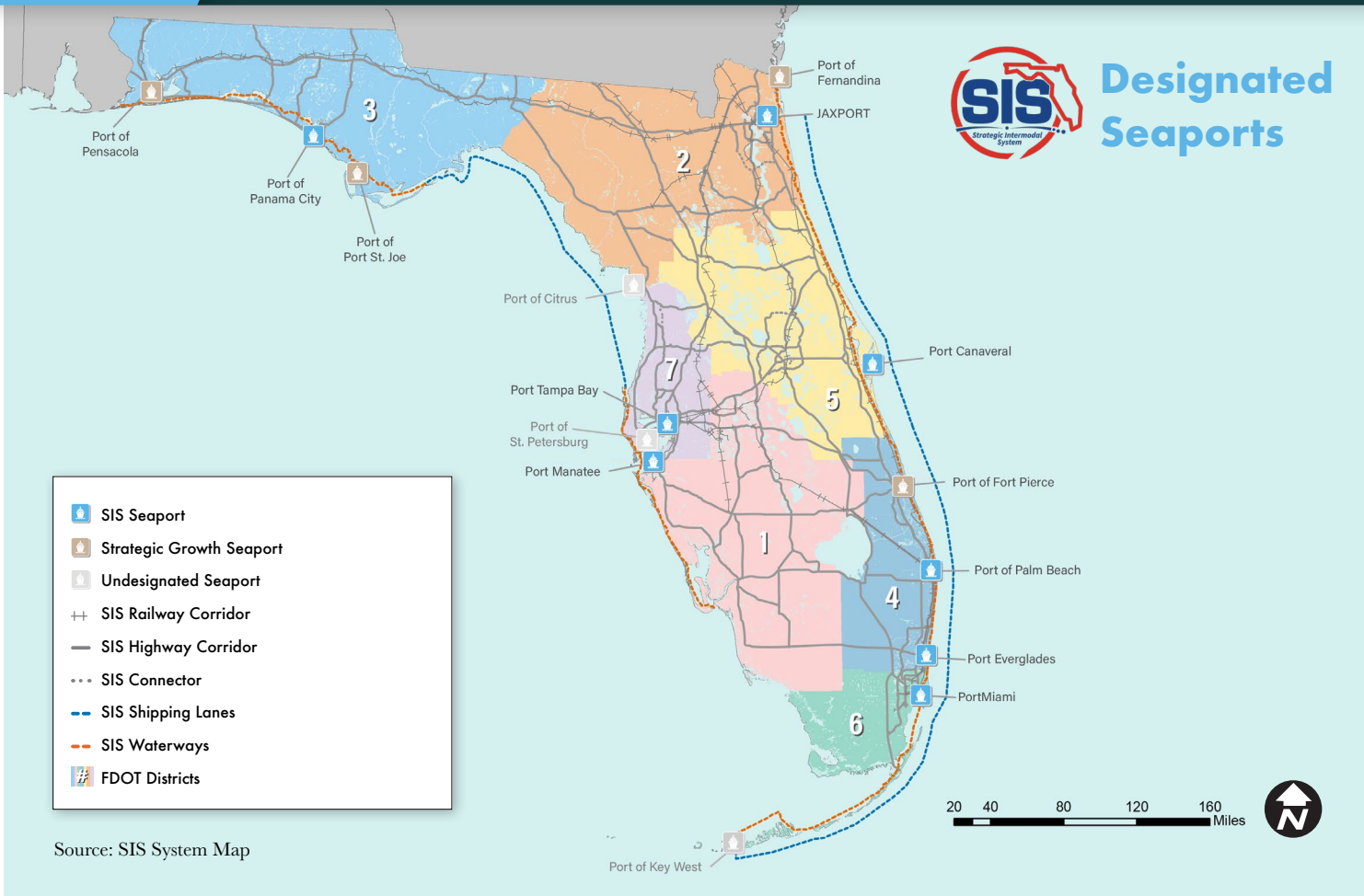
Seaports serve two main purpose:



Easier travel of international freight cargo



Provide access for cruise lines throughout the State of Florida



Data Review



SEAPORTS IN FLORIDA

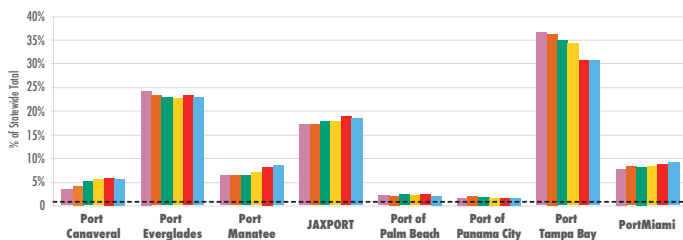


SIS DESIGNATED SEAPORTS

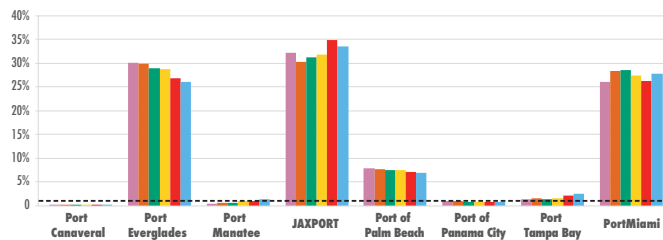
Port of Panama City is the most recently SIS designated port.

SIS Seaports Data and Trends 2014-2019

Freight Cargo (Tons)



TEUs



Cruise Passengers

