

Transportation | Planning | Exchange




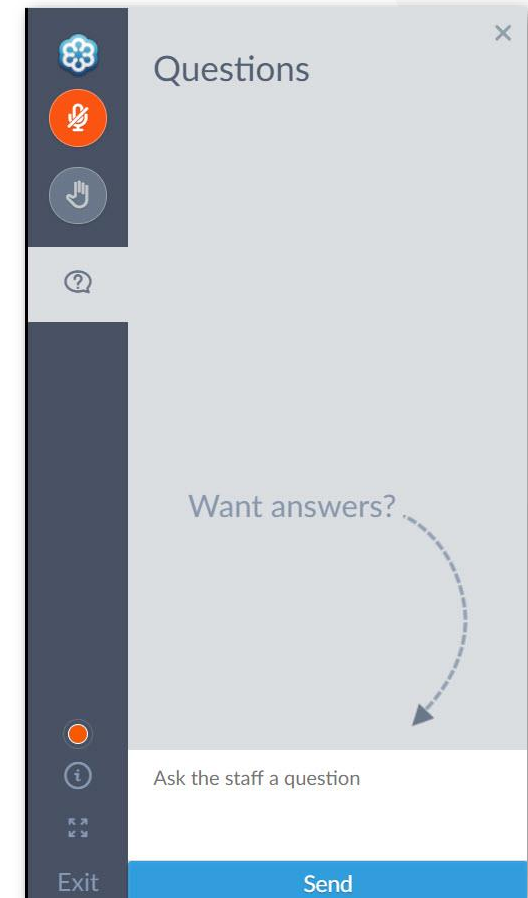
The Art and Science of Community Planning: Linking Transportation and Land Use

October 2, 2020



ATTENDEE PARTICIPATION PANEL

- » Attendees are automatically muted throughout the webinar
- » Click the  to open the panel box and submit a question to the panelists
- » Answers to questions will be addressed by the panelists either verbally or in the question box
- » Webinars are being recorded and will be available with other materials on the TransPlex website
- » Please complete the follow up survey that will be sent via email at the conclusion of this webinar



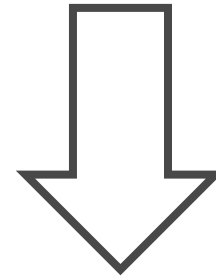
PROFESSIONAL DEVELOPMENT CREDITS



Offered for Planners and Engineers that attend the live session.

1.5

You must attend the entire session to be eligible for 1.5 hours of credits.



FDOT employees will can download certificates through Learning Curve.



All other attendees will receive certificates via email.

CELEBRATING FLORIDA'S PLANNERS

(2020 PLANNING PROFESSIONAL OF THE YEAR NOMINEES)

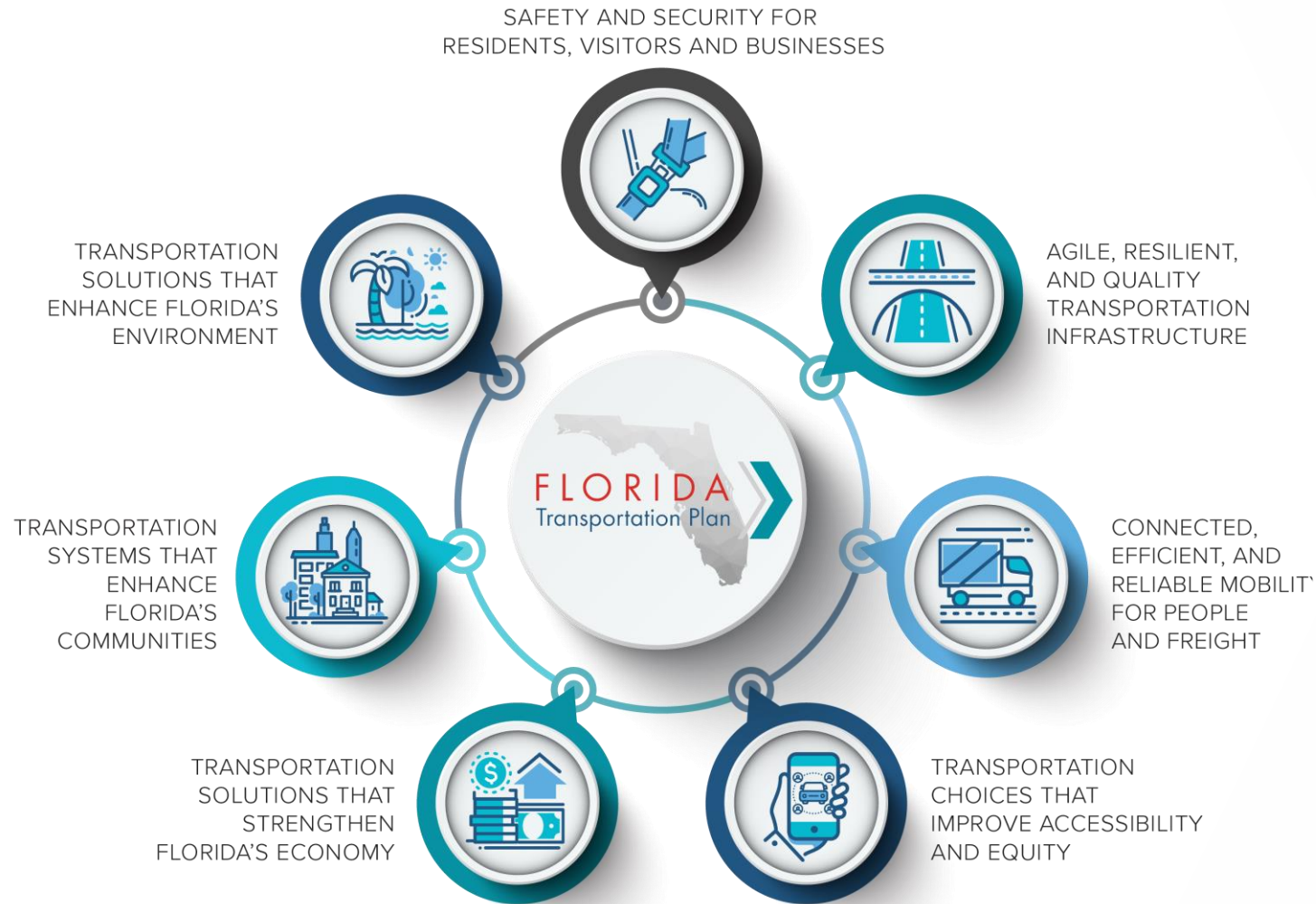
Pat Steed

Central Florida Regional Planning Council

Gary Harrell

Charlotte County-Punta Gorda MPO

FLORIDA TRANSPORTATION PLAN GOALS



PRESENTERS



Jennifer Z.
Carver, AICP
FDOT Office of
Policy Planning



Christine
Fasiska, PE
FDOT District 4



Sabrina
Aubery, PE
FDOT District 4



Gerald Goosby
FDOT Systems
Implementation
Office



Stephen Benson,
AICP, CNU-A
City of Tampa



Ben Chandler, AICP
Apalachee Regional
Planning Council

COMMUNITY PLANNING

- » Maximize the health, safety, and economic well-being of all people living in our communities.
 - » how we can move around our community
 - » how we can attract and retain thriving businesses
 - » where we want to live, and
 - » opportunities for recreation
- » Planning helps create communities of lasting value

--American Planning Association

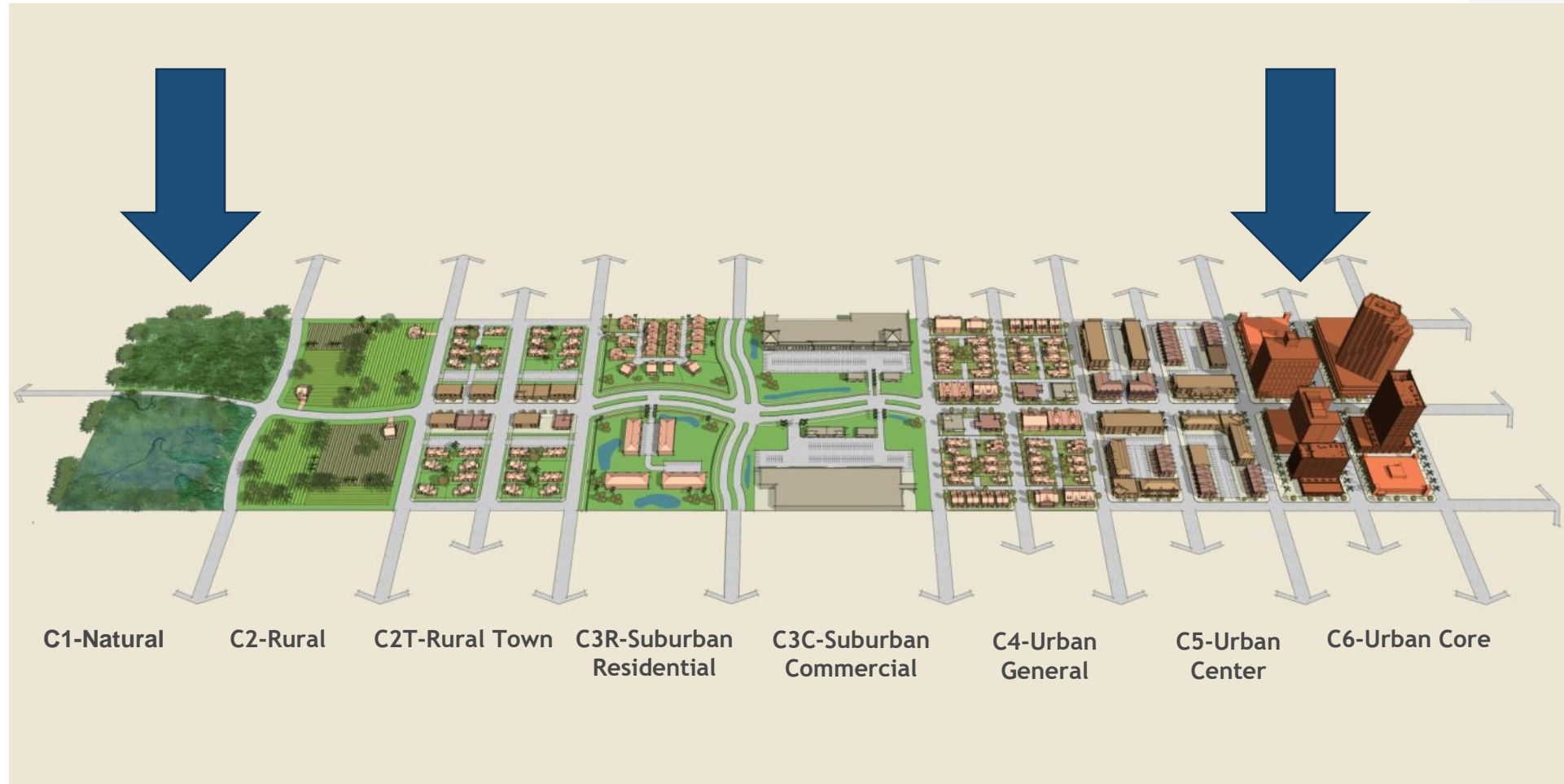
October is National Community Planning Month!

FDOT'S ROLE

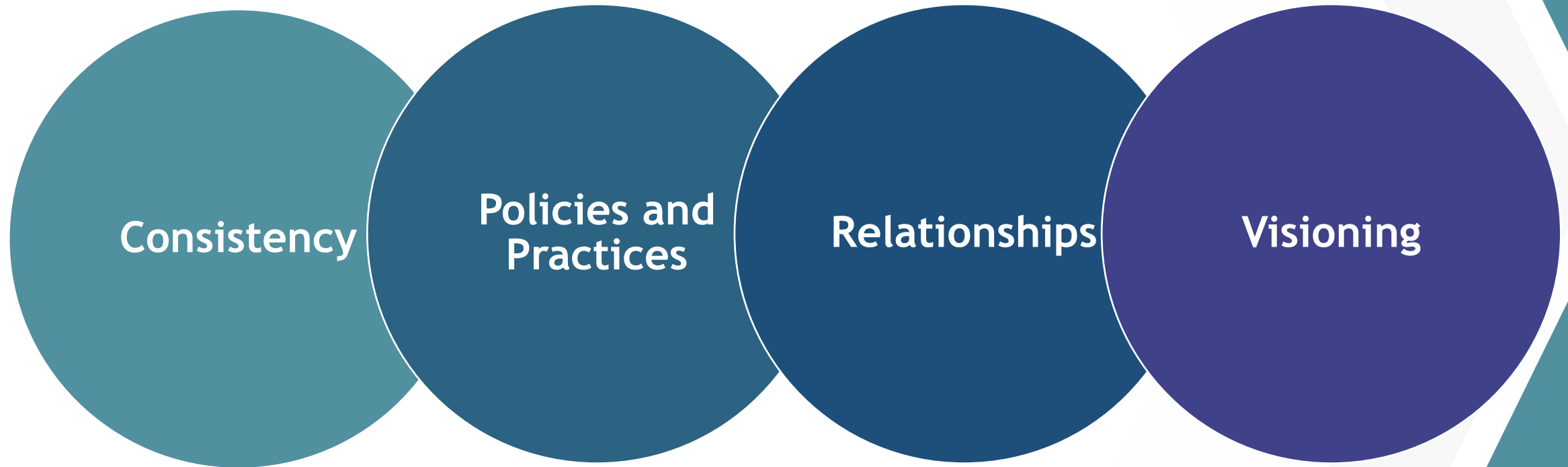
- » **Mission: Safe** transportation system that
 - » ensures the **mobility** of people and goods
 - » enhances **economic prosperity**, and
 - » preserves the **quality** of our **environment** and **communities**.
- » **Vital Few**
 - » Improve Safety, Enhance Mobility, Inspire Innovation
- » **How**
 - » Linking Land Use and Transportation through Context Based Design and Community Planning

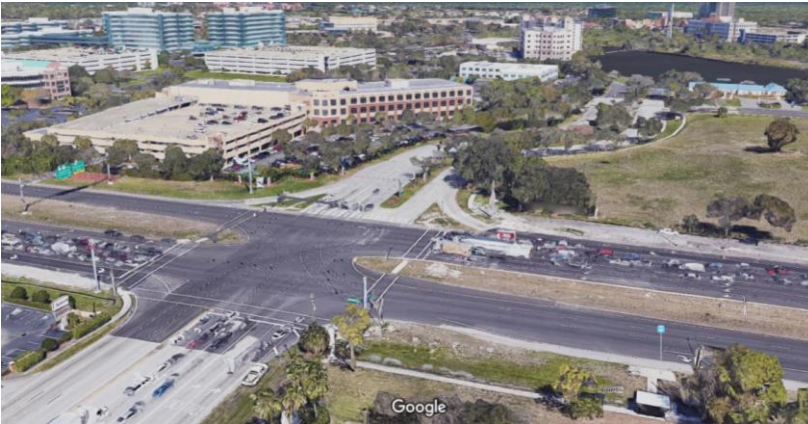
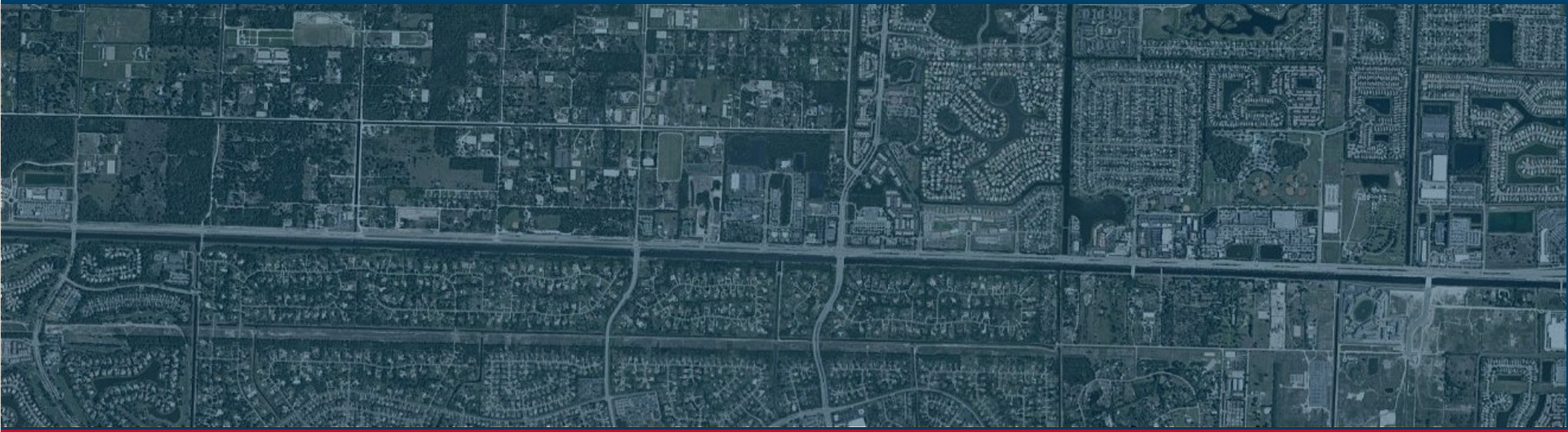


CONTEXT CLASSIFICATIONS



COMMUNITY PLANNING EMPHASIS AREAS





LAND USE CHANGES AND SIS FUNCTIONALITY

Cumulative Development Impacts on SIS Facilities

TransPlex Webinar

Gerald Goosby
SIS Planning Manager



October 2, 2020

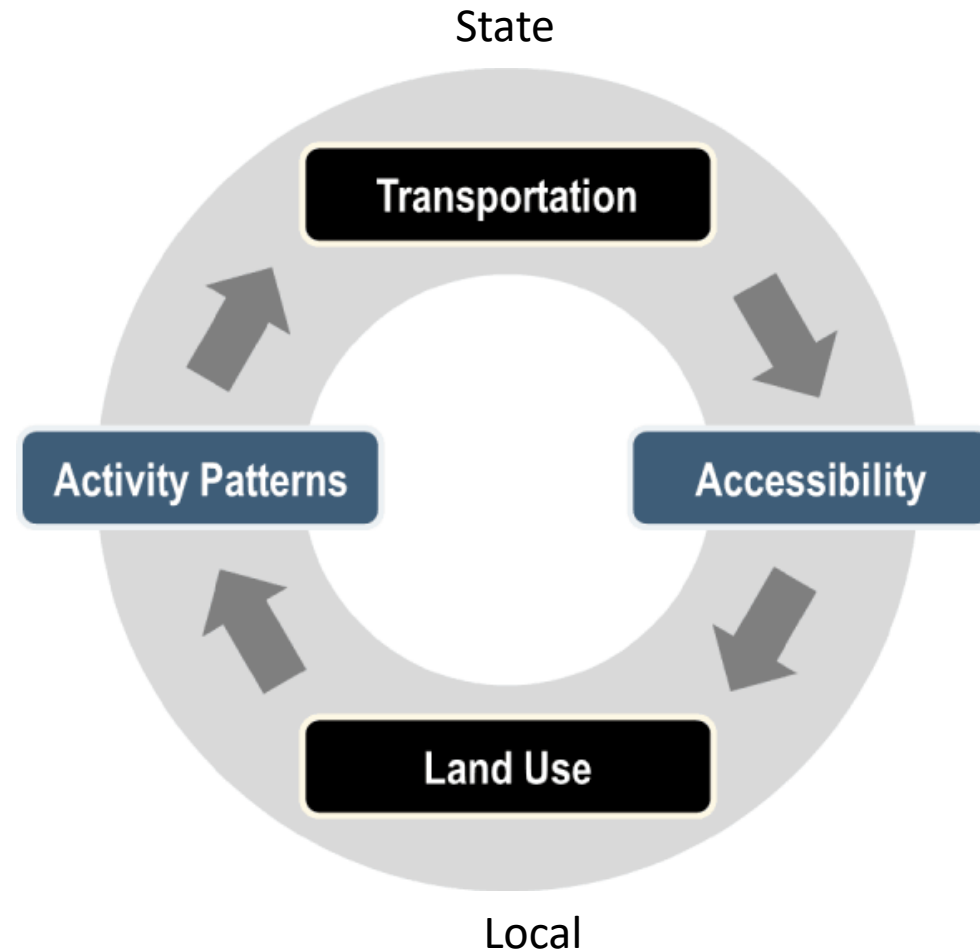
PRESENTATION OUTLINE

- Motivation
- Purpose
- Approach
- Preliminary Recommendations



MOTIVATION

- Transportation and land use are intrinsically related
- Separation of responsibilities:
 - FDOT responsible for state roadways
 - Local governments responsible for land use decisions
- Better coordinate land use and transportation decisions



PURPOSE

- To understand cumulative developments impacts on SIS facilities
- To identify strategies for preserving capacity of SIS roadways



APPROACH

Working Group

- FDOT staff

Literature Review

- Best practices

Case Studies

- 3 corridors

Solutions

- Toolbox

CASE STUDIES

- D1, SR 70 in Arcadia, SR 72 to SR 31, 3.6 miles
- D2, SR 200 between Callahan and Yulee, Griffin Rd to Chester Rd, 11.6 miles
- D5, US 27 south of Clermont, Hartwood Marsh Rd to Polk County Line, 11 miles

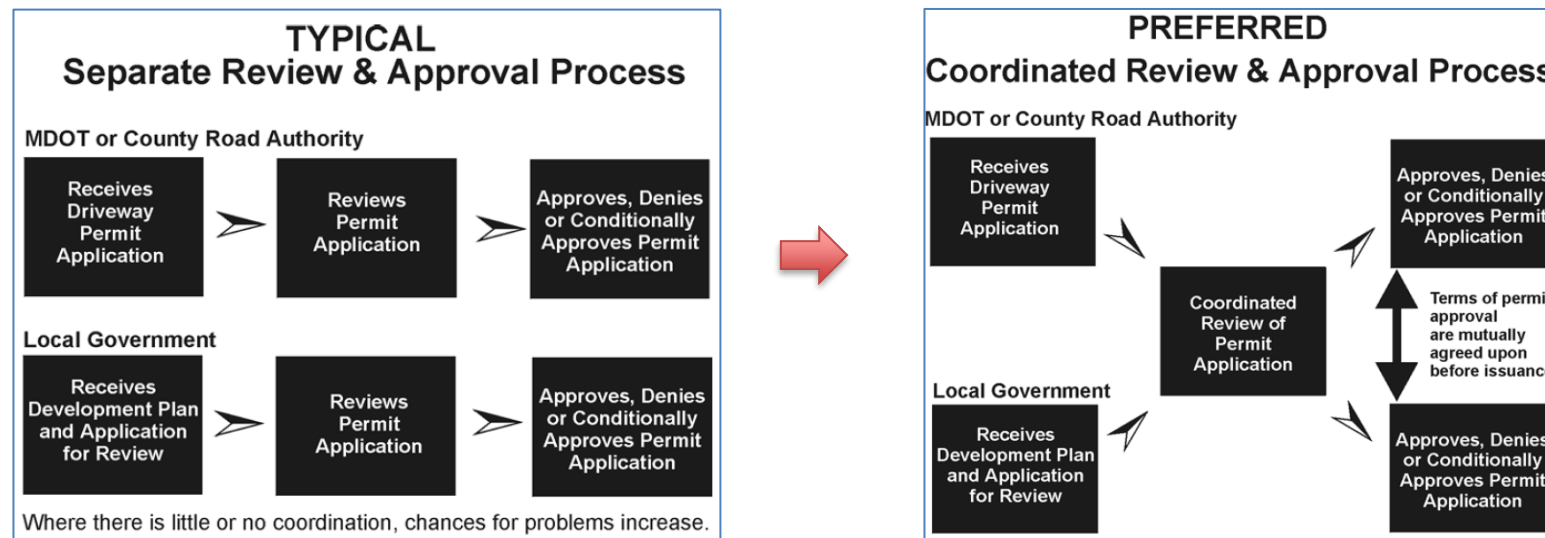
SR 70 Segment Analysis

Year/Scenario	Lanes	AADT	V/C	LOS
2010	4	16,000	0.45	C
2019	4	22,000	0.62	C
2045 No Build	4	30,700	0.86	C
2045 Build	4	43,500	1.22	F

PRELIMINARY RECOMMENDATIONS

Partnerships

- Establish stronger partnerships with local governments.
 - Promote early engagement
 - Partner with local governments to develop collaborative strategies
- Example: Michigan DOT Development Review Process



PRELIMINARY RECOMMENDATIONS

Systems Approach

- Incentivize and/ or facilitate best practices at a local level.
 - Provide technical assistance to local government partners
 - Establish incentives for local governments to implement smart planning to decrease pressure on SIS
- Example: NJDOT – NJ Futures in Transportation (NJFIT)



PRELIMINARY RECOMMENDATIONS

Systems Approach

- Increase multimodal options
- Develop a shared multi-agency database to track developments
- Develop a systematic approach to identify at-risk SIS facilities
- Example:
Washington
State Tool

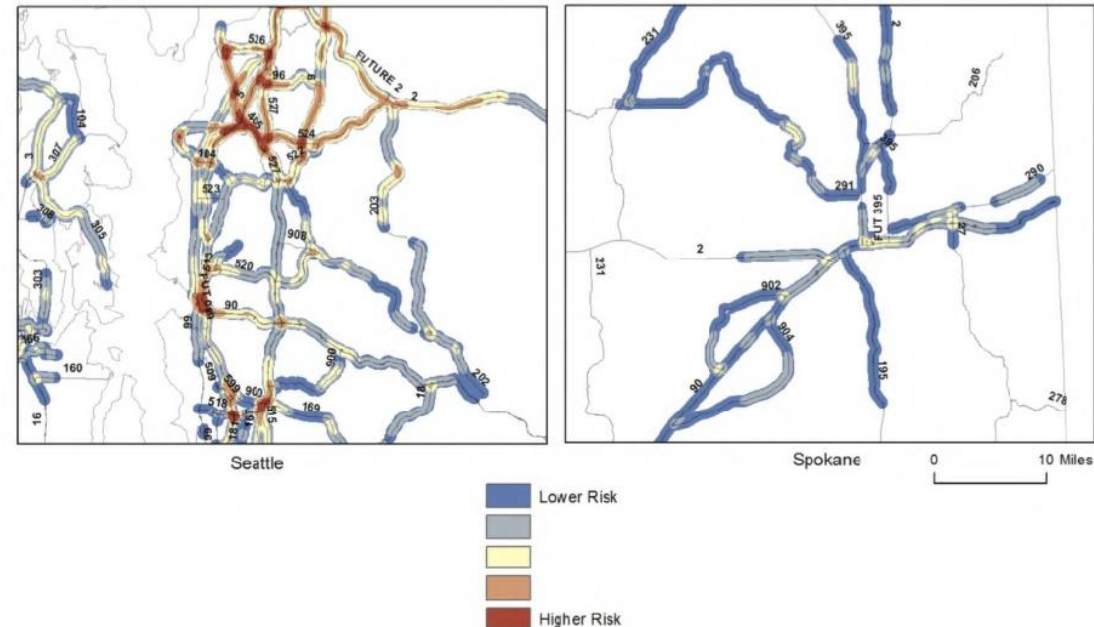
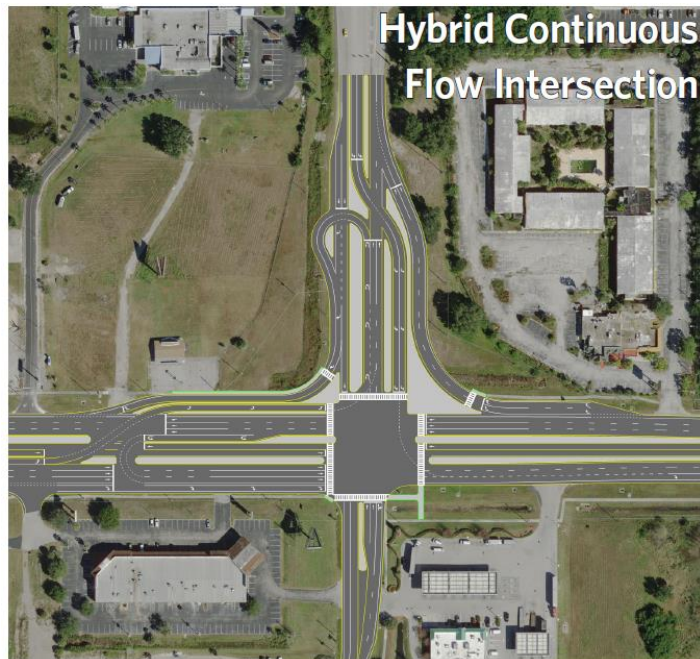


Figure 1-7: Line Density of Composite Risk Score within 0.5-Mile Buffer

PRELIMINARY RECOMMENDATIONS

Engineering Solutions

- Anticipate context-based design needs.
- Establish thresholds for planning / implementing capacity management strategies.

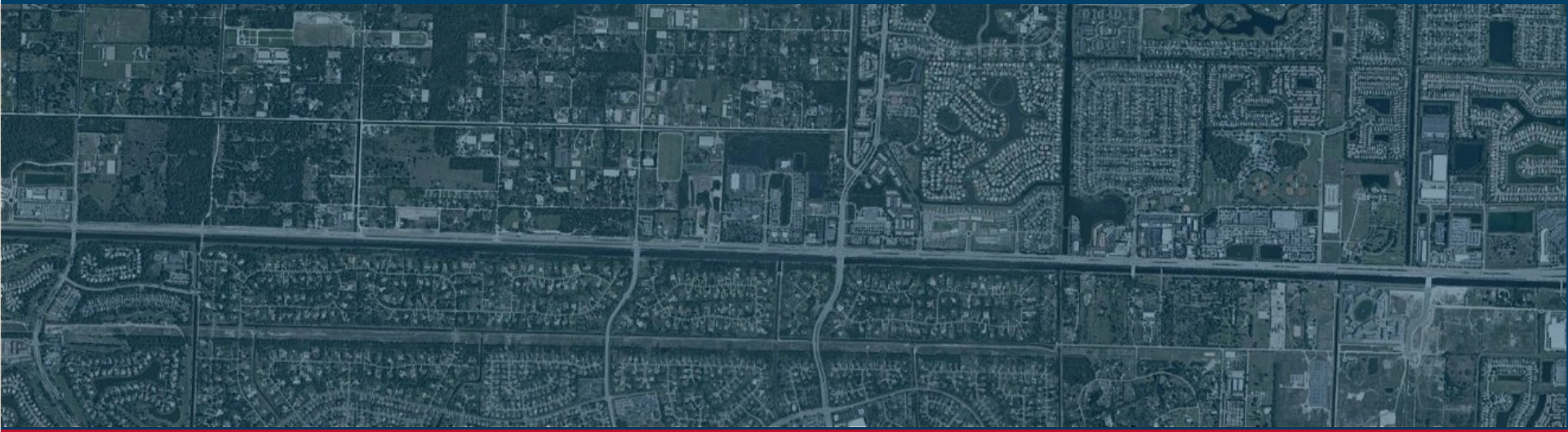


PRELIMINARY RECOMMENDATIONS

Policy

- Enhance Access Management/Driveway Permit Process
- Provide SIS funding flexibility
- Leverage existing statutes and/or request new legislative action
- Example: Virginia DOT Arterial Preservation Program





Florida Department of Transportation

Systems Implementation Office

605 Suwannee Street, MS 19

Tallahassee, FL 32399

850.414.4900

sisinfo@dot.state.fl.us

www.fdot.gov/planning/sis/



PARTNERING AND COLLABORATION..... HOW WELL IT WORKS WHEN WE ALL WORK TOGETHER

Presenters – FDOT District 4:
Christine Fasiska, PE & Sabrina Aubery, PE



The Art and Science of Community Planning:
Linking Transportation and Land Use

*“Alone we can do so little;
together we can do so much”*



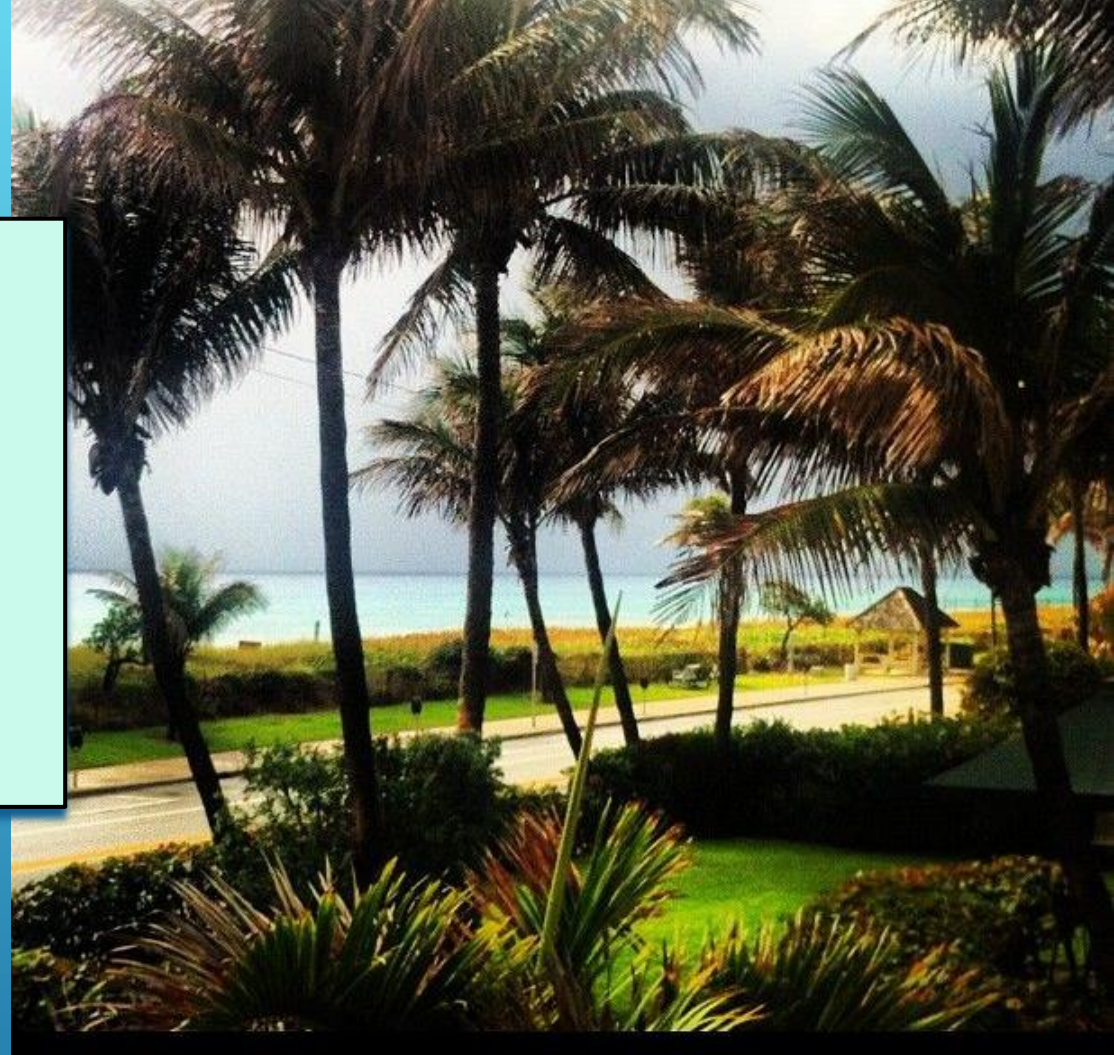
— HELEN KELLER —

Partnering and Collaboration

- Early Coordination
- Continuous Communication
- Process = Lane Repurposing
- Project = US-1/SR-5, Delray Beach
- Off-System (Local Facilities – Owned by the County or Local Municipalities)
- On-System (State Facilities)



**CITY
OF
DELRAY
BEACH**



US-1/SR-5 LANE REPURPOSING
from SOUTH of SE 10TH STREET to NORTH of GEORGE
BUSH BOULEVARD

On-System Facility - Is it Feasible?

- FDOT Mission:
 - Provide a Safe Transportation System
 - Ensures the Mobility of People and Goods
 - Enhances Economic Prosperity
 - Preserves the Quality of Our Environment and Communities

City Request - Community Vision

- FDOT Vision:
 - Serve the People of Florida
 - Providing a Transportation Network
 - Well Planned
 - Supports Economic Growth
 - Congestion and Fatality Free

PARTNERSHIP FOR SUCCESS!

Early Coordination

- FDOT
- City Officials
- Planning Partners
- Traveling Public
- Residents and Business Owners



Continuous Communication

- Vision + Concept + Construction = Results
- Schedules
- Expectations
- Patience

PILOT PROJECT / TEST PERIOD

fit, flow, and function

But first,
a **test period** is warranted.

US 1 between George Bush Boulevard and SE 10th Street has been six lanes for a long time. Some people are concerned that fewer lanes will result in increased traffic congestion in the Downtown area. Advanced computer models and extensive research, however, suggest otherwise.

Still, we want to be sure that things **fit, flow, and function**. The changes you see on US 1 are only temporary while officials study their effectiveness. In the interim, we'll be studying the real-world effects of fewer and narrower lanes and new signal timing plans on peak- and off-season traffic, driver operating speeds, and accident rates. The changes will be in place for at least a year in order to allow sufficient time to gather seasonal and off-peak data. If the decision is made to go forward with the beautification, the temporary measures will remain until the permanent improvements are installed.

These interim improvements are being funded by the Delray Beach Community Redevelopment Agency.

For more information about the US 1 Enhancement project, contact:

Randal Krejcarek
City Engineer
(561) 243-7322
krejcarek@ci.delray-beach.fl.us

US 1



Maybe you've
noticed some
changes along US 1...

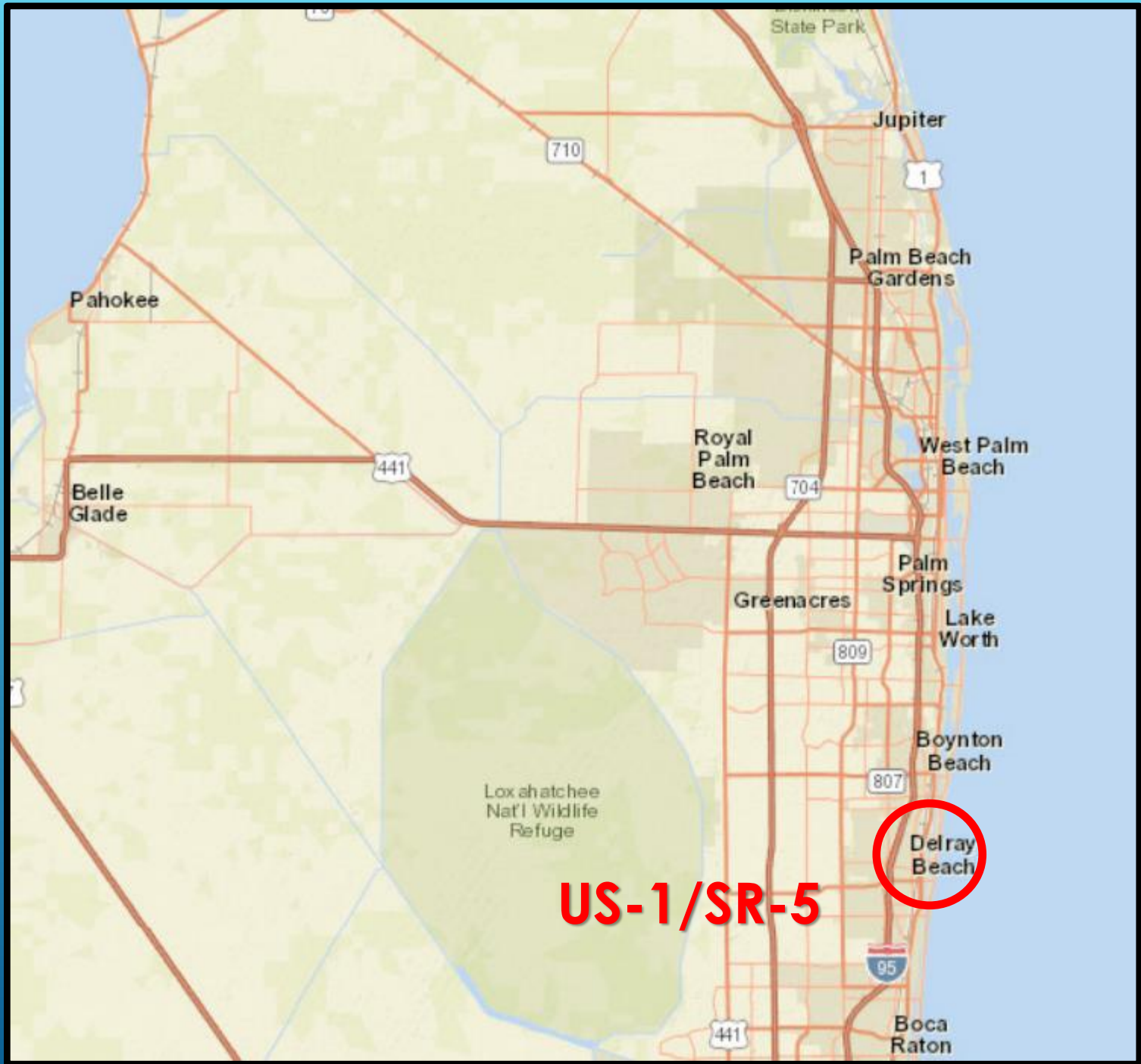


Enhancement Project



PILOT PROJECT / TEST PERIOD





END PROJECT

**US-1/SR-5 from SOUTH of SE 10th STREET to NORTH of GEORGE BUSH BOULEVARD
CITY of DELRAY BEACH**

SR-806/ATLANTIC AVE from SOUTHBOUND US-1/SR-5 to NORTHBOUND US-1/SR-5

BEGIN PROJECT

US-1 / SR-5; ATLANTIC BOULEVARD LAP PROJECT (ON-SYSTEM) CITY OF DELRAY BEACH

START OF CONSTRUCTION:

MAY 2013

CONSTRUCITON DAYS:

902

TOTAL PROJECT COSTS:

\$ 12.1 Million

FEDERAL FUNDING:

\$ 2.3 Million

STATE FUNDING:

\$ 5.1 Million

LOCAL FUNDING:

\$ 4.7 Million

SIB Loan

(State Infrastructure Bank)



Scope of Work:

Original – Typical Section

- 3 lanes each direction
- No bike lane



Constructed – Typical Section

- 2 lanes each direction
- 5-foot bike lane
- 9-foot bulb out/parking/turn lanes



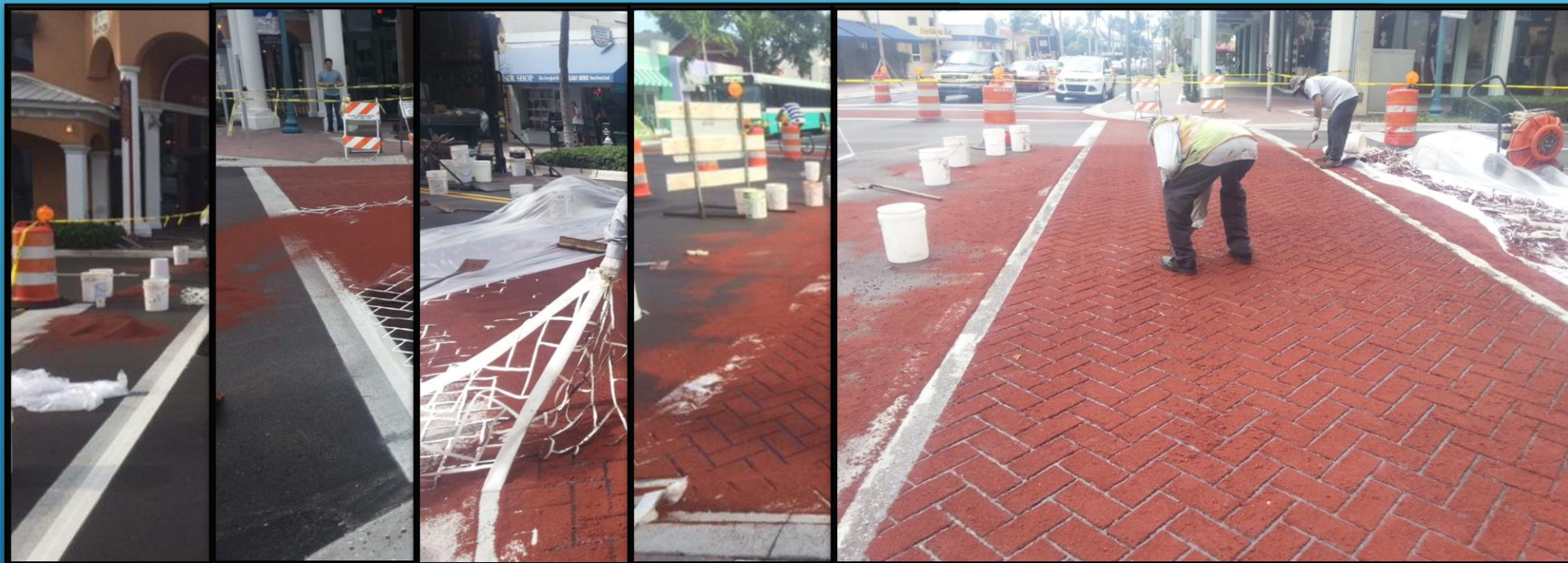
Scope of Work:

- Lane Repurposing
- Crosswalk Enhancements
- Bike Lanes and Sidewalks
- Drainage Improvements
- Resurfacing
- Lighting / Landscaping



Scope of Work:

- Crosswalk Enhancements



Scope of Work:

- Resurfacing





- ☐ Implementing a Lane Repurposing project prior to having a District or Statewide Lane Repurposing Review & Approval Process
- ☐ Coordination/Communication
- ☐ Manage Expectations – Roles and Responsibilities
- ☐ Funding



❑ Development of a Formal Statewide Lane Repurposing Procedure & Guidebook

Lane Repurposing Guidebook

AUGUST 2020





- ❑ Early coordination with stakeholders
- ❑ Continuous communication between agencies, FDOT, & planning organizations



Lessons Learned



- ❑ Define expectations and responsibilities





- ☐ Frequent outreach to the community throughout the project
- ☐ Focused public involvement by local agency while developing initial scope



Lessons Learned



- ❑ Well defined initial scope and accurate Cost Estimate



Lessons Learned



- ❑ Understanding restrictions with State and Federal funding
- ❑ Participating vs Non-Participating items





LAP PROJECT: **US-1 / SR-5**
CITY OF DELRAY BEACH



If everyone is moving forward
together

then success takes care of itself
~Henry Ford

THANK YOU!

Contact Information:

Christine Fasiska, PE
FDOT District 4 Transportation Planning Manager
Email: Christine.Fasiska@dot.state.fl.us
Phone No.: 954-777-4480

Sabrina Aubery, PE
FDOT District 4 Program Administration Engineer
Email: Sabrina.Aubery@dot.state.fl.us
Phone No.: 954-777-4585



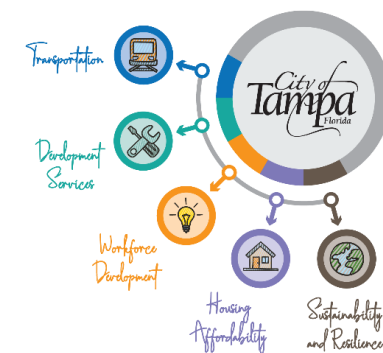


Transforming Tampa's Tomorrow... One corridor at a time

TRANSPLEX October 2, 2020

Stephen Benson, AICP, CNU-A

City of Tampa Mobility Department



All the Players

Local Government



Hillsborough
County Florida



Plan
Hillsborough



Hillsborough MPO
Metropolitan Planning
for Transportation



Hillsborough County
City-County
Planning Commission

Transportation Agencies & Special Authorities



District Anchors & Business Community



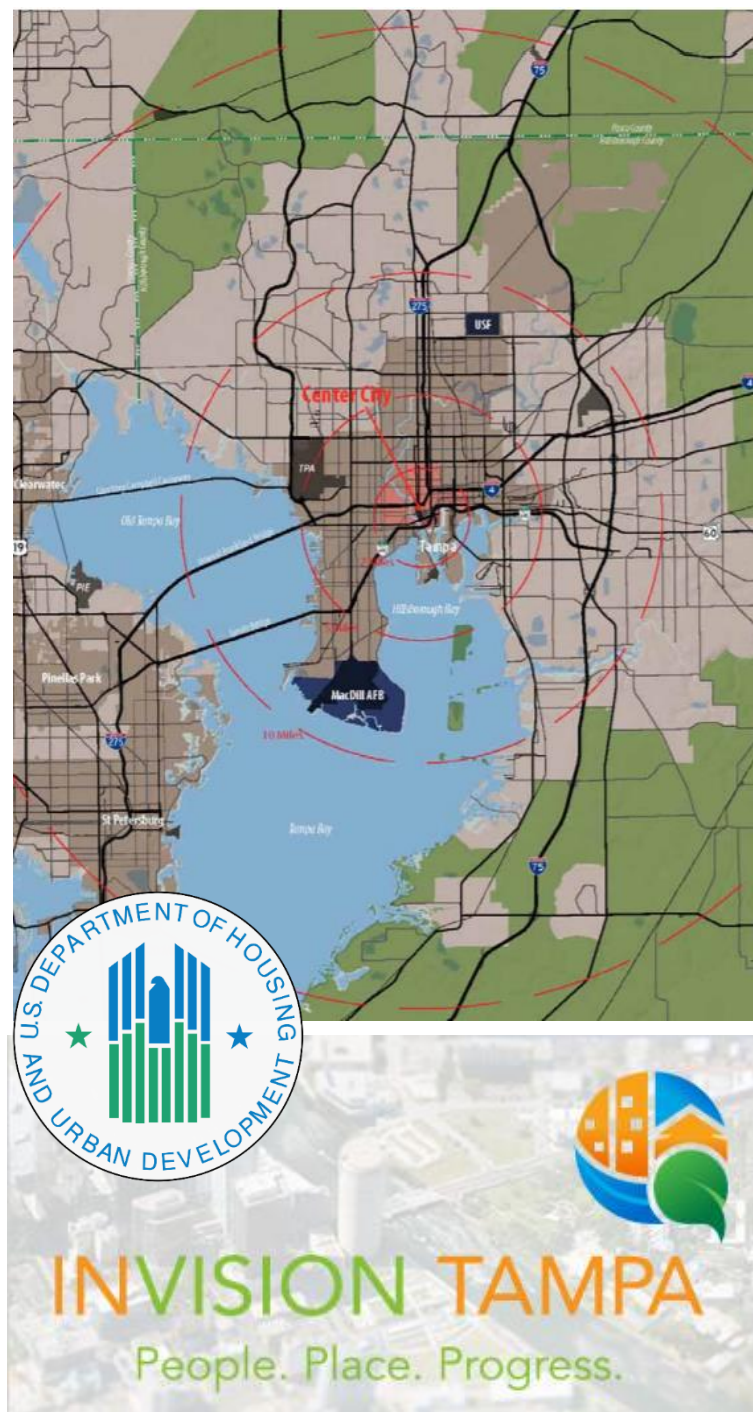
Stakeholders & Community Groups



10 Years of Planning – in 15 minutes

1. Comprehensive Plan (Planning Commission & City) 2009
2. **InVision Tampa Plan (City) 2010**
3. **Seminole Heights Vision & Overlay (City) 2009**
4. Transit Assets & Opportunities (MPO) 2014
5. **Heights Mobility Study & Projects (FDOT) 2018**
6. **TOD Pilot Project (Planning Commission & HART) 2020**
7. **Streetcar Extension Project Development (City) 2015-2019**
8. **BRT to University Project Development (HART) 2020**
9. **Tampa Bay Next (2016-2020)**
10. Franklin Street Visioning (TDP) 2020
11. Heights Riverfront & Water Street (private sector) 2017-underway
12. Innovation District (IP/Hillsborough County)
13. Fowler Ave Study (FDOT) 2019





Mobility:

- Make big roads easier to cross
- Embrace innovation & micro-mobility
- Trails for transportation
- Convert one-way streets
- Strategic road diets

Transit:

- Enhance existing MetroRapid
- Downtown circulation
- Connect to USF with transit
- Keep regional connections in mind









Remade Tampa Street + Florida Avenue

TAMPA STREET – DISCONNECTED CONVERTED
NEIGHBORHOOD STREET

FLORIDA AVENUE –
DIRECT, COMMERCIAL HISTORY

Remade Florida Avenue

**EXISTING FLORIDA AVENUE | ONE-
WAY THROUGH STREET**

Remade Florida Avenue

**FUTURE FLORIDA AVENUE | 3-LANE
NEIGHBORHOOD MAIN STREET**



Remade Tampa Street

EXISTING TAMPA AVENUE | ONE-WAY THROUGH STREET
[COMMUNITY LIABILITY]

Remade Tampa + Florida Avenues

FUTURE TAMPA STREET | NEIGHBORHOOD CONNECTOR BOULEVARD
[COMMUNITY ASSET]





Remade Tampa + Florida Avenues

Opportunities

- Supporting Redevelopment
- Cut-Through Circulation
- Congestion Avoidance Cut-Through
- Neighborhood Reconnection
- Evaluating Alternative Futures for the Corridors

Early Actions Already Underway

- Meeting with FDOT District Secretary to Review prior studies, current situation and City Vision

Early Next Steps

- Initiate an updated study of two way function for the Tampa / Florida Corridors, based on reasonable growth factor:
- Current Traffic
- Potential time and capacity change with 2 Way
- Projection of peak hour trips to I-275
- Develop Corridor Design / Development Standards for new development





TAMPA BAY

FDOT Secretary says it's time to hit reset button on TBX project



By Mitch Perry on December 13, 2016



Our solutions are more
than just interstates.

Active/Ongoing Studies

Interstate
Modernization



Transit



Bike/Ped
Facilities



Complete
Streets



Transportation
Innovation

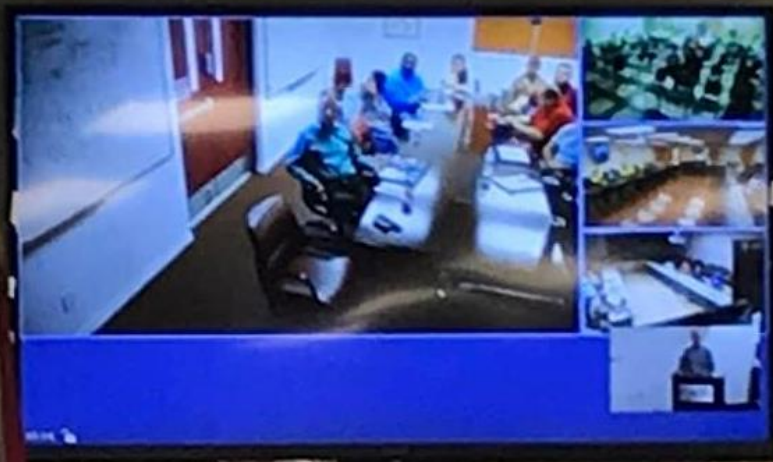


Freight
Mobility



next

FDOT



FDOT

Streetcar Modernization & Extension

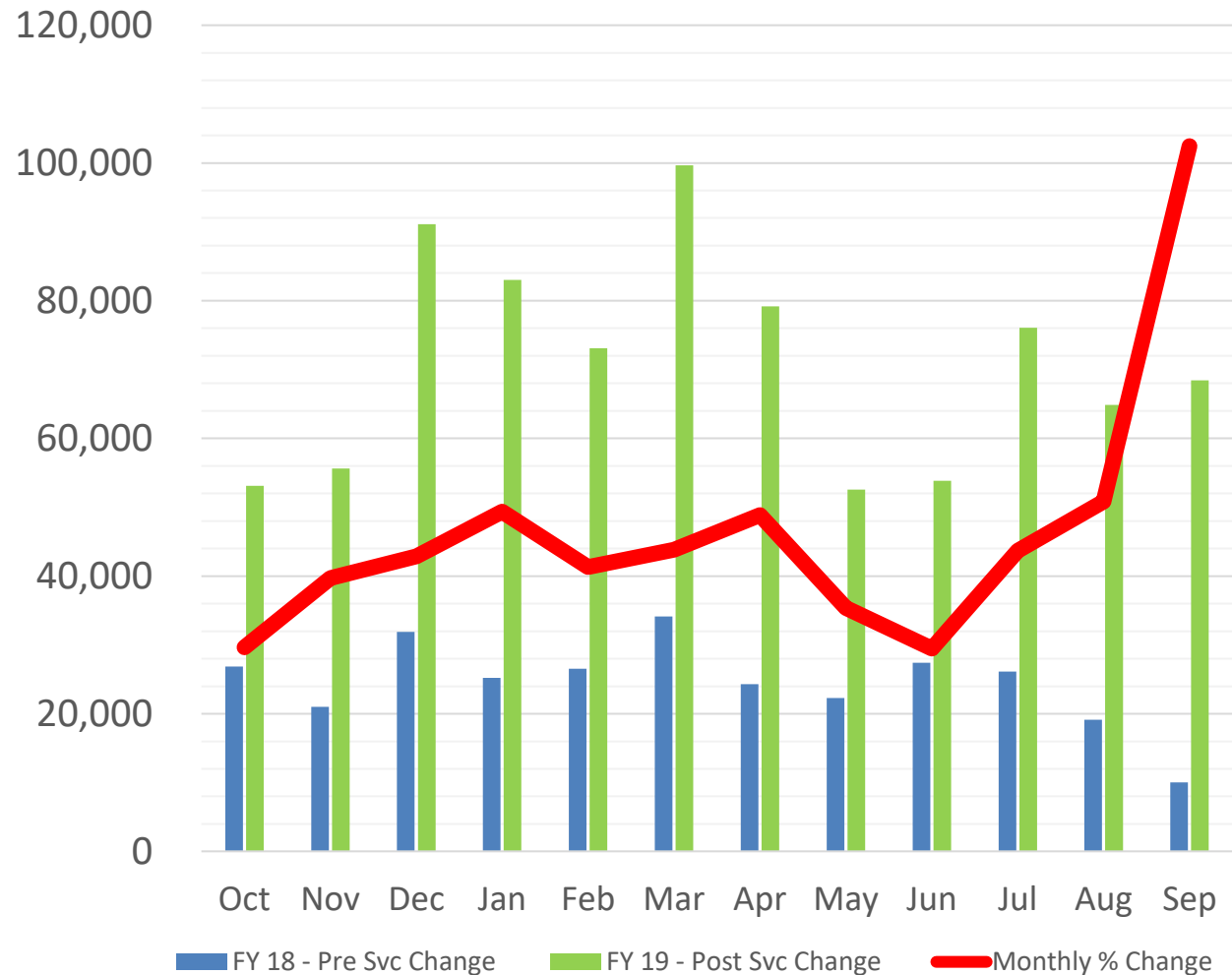
INVISION: 
TAMPA STREETCAR
TRANSFORMING TAMPA'S TRANSIT



A transit solution that supports the City's vision for *a livable, connected, and competitive Downtown*.

- » Modernize and extend the existing system.
- » Improve access across the core of the City.
- » Connect premier cultural and entertainment destinations, educational institutions, and revitalizing urban neighborhoods.
- » Deliver first/last mile connectivity.
- » Set the stage for future extensions.

STREETCAR RIDERSHIP BEFORE & AFTER SERVICE CHANGES



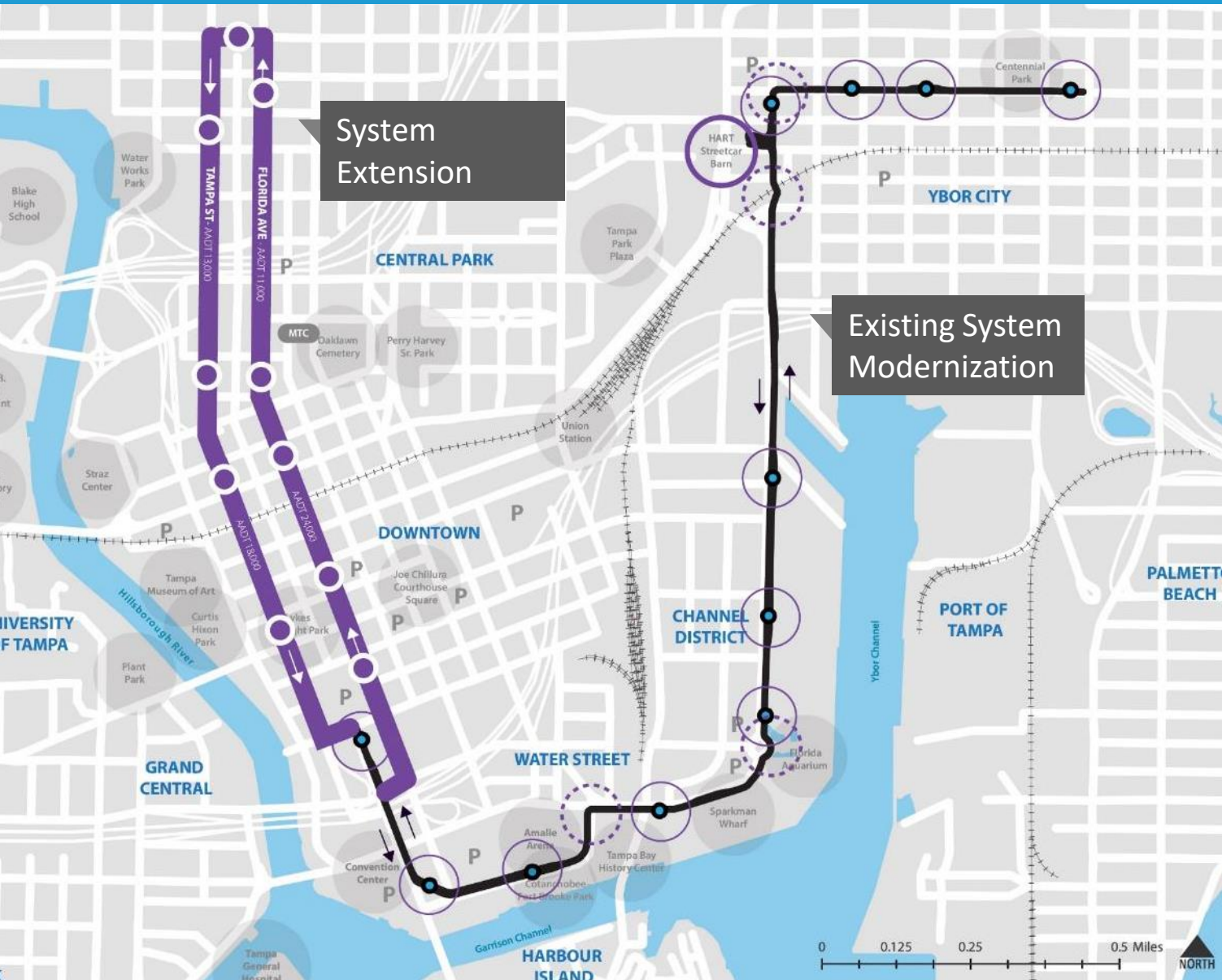
After ridership tripled, Tampa's TECO Streetcar is now extending service

This means 15-minute service on nights and weekends.

BY RAY ROA — APR 10, 2019 10 AM

FDOT's grant to improve service on the existing system has resulted in an unprecedented increase in ridership. Over the first year of improved frequency, extended service hours, and free fares, ridership increased by 288%.

Streetcar Modernization & Extension



MODERNIZATION (2.63 Miles)

- » Introduce modern vehicles
- » Reconstruct tight turns
- » Improve stops for level boarding
- » Expand streetcar barn
- » Upgrade traction power

SYSTEM EXTENSION (1.2 Miles)

- » North on Florida Avenue
- » Turn on Palm Avenue
- » South on Tampa Street
- » East on Whiting





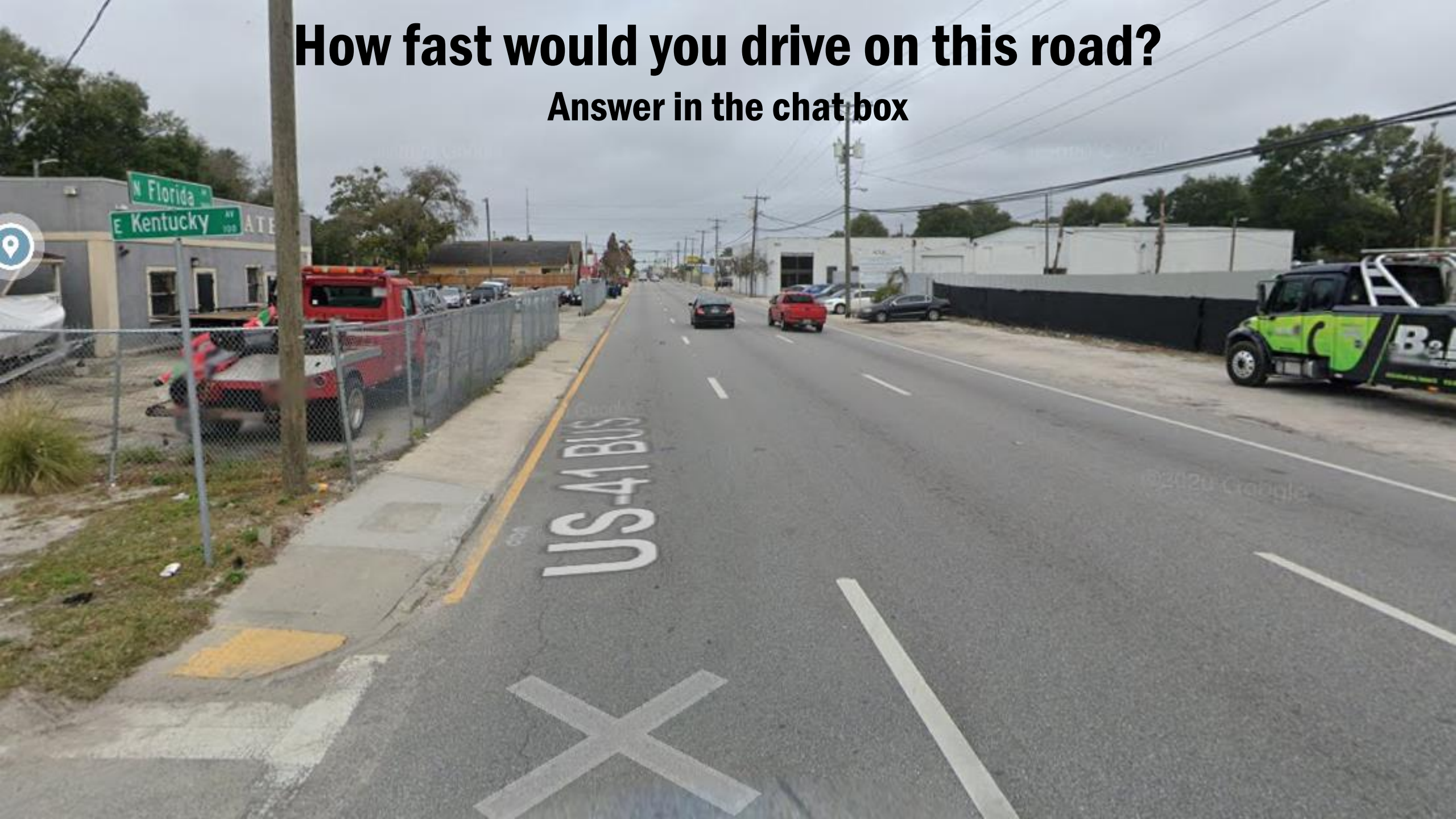
KEEP THE HEIGHTS MOVING

Visit [HeightsMobility.com](https://www.heightsmobility.com)
to get involved.

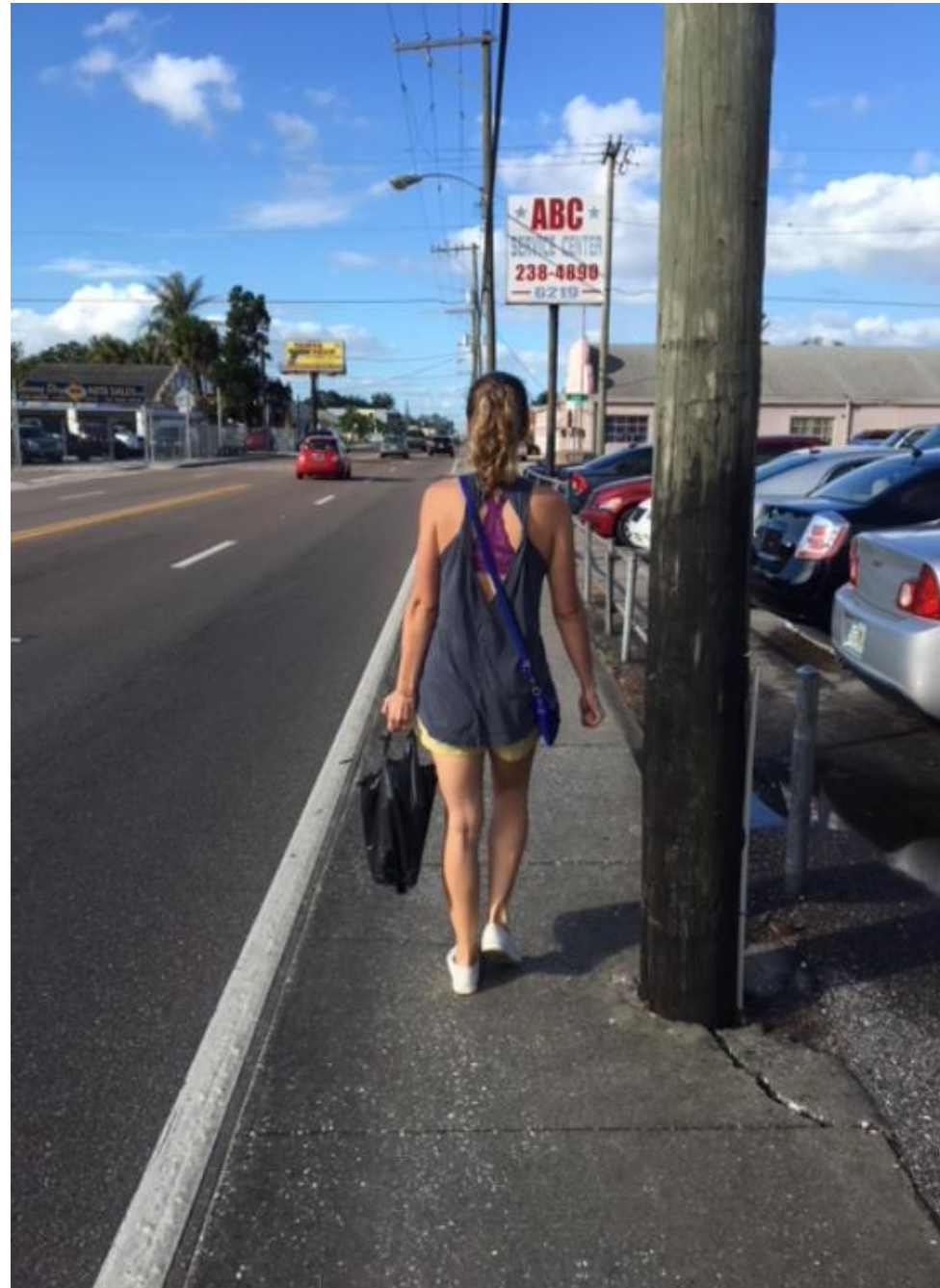
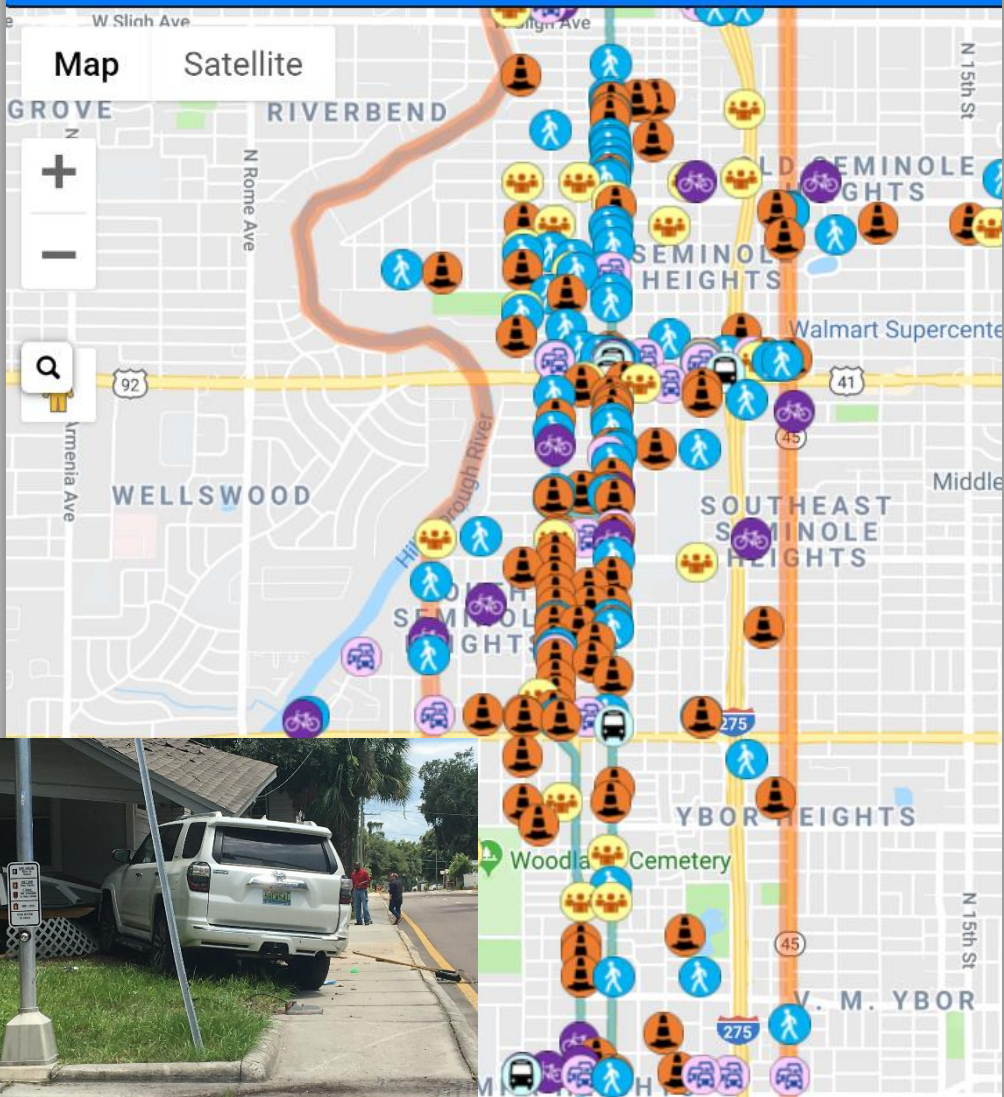


How fast would you drive on this road?

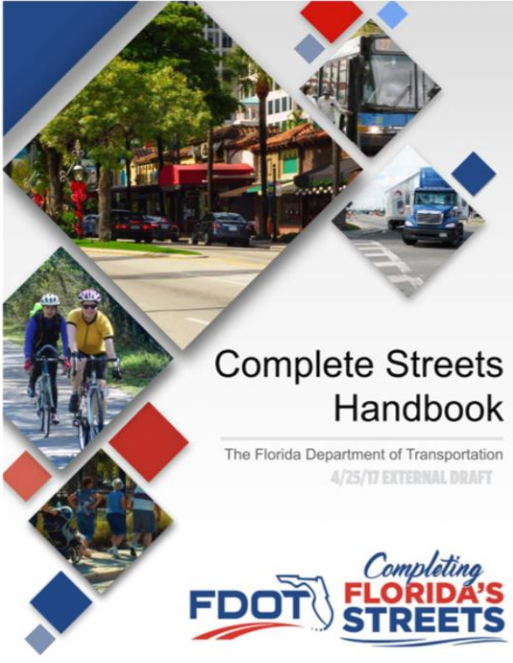
Answer in the chat box



Map Satellite








Complete Streets Handbook

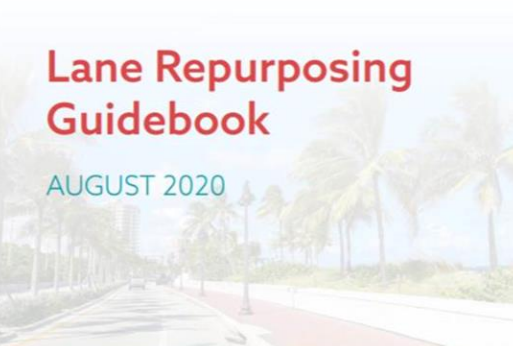
The Florida Department of Transportation
4/25/17 EXTERNAL DRAFT







Lane Repurposing Guidebook

AUGUST 2020






Before Lane Repurposing



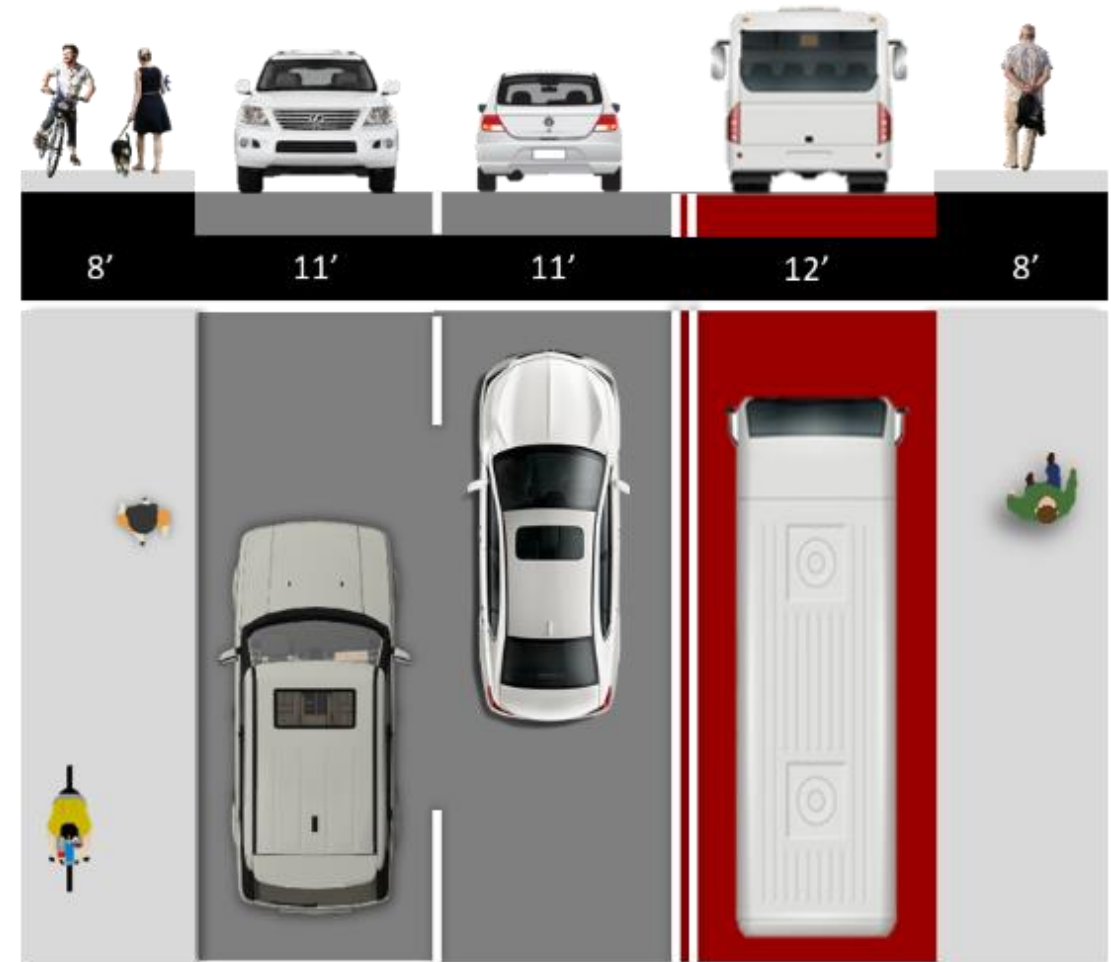
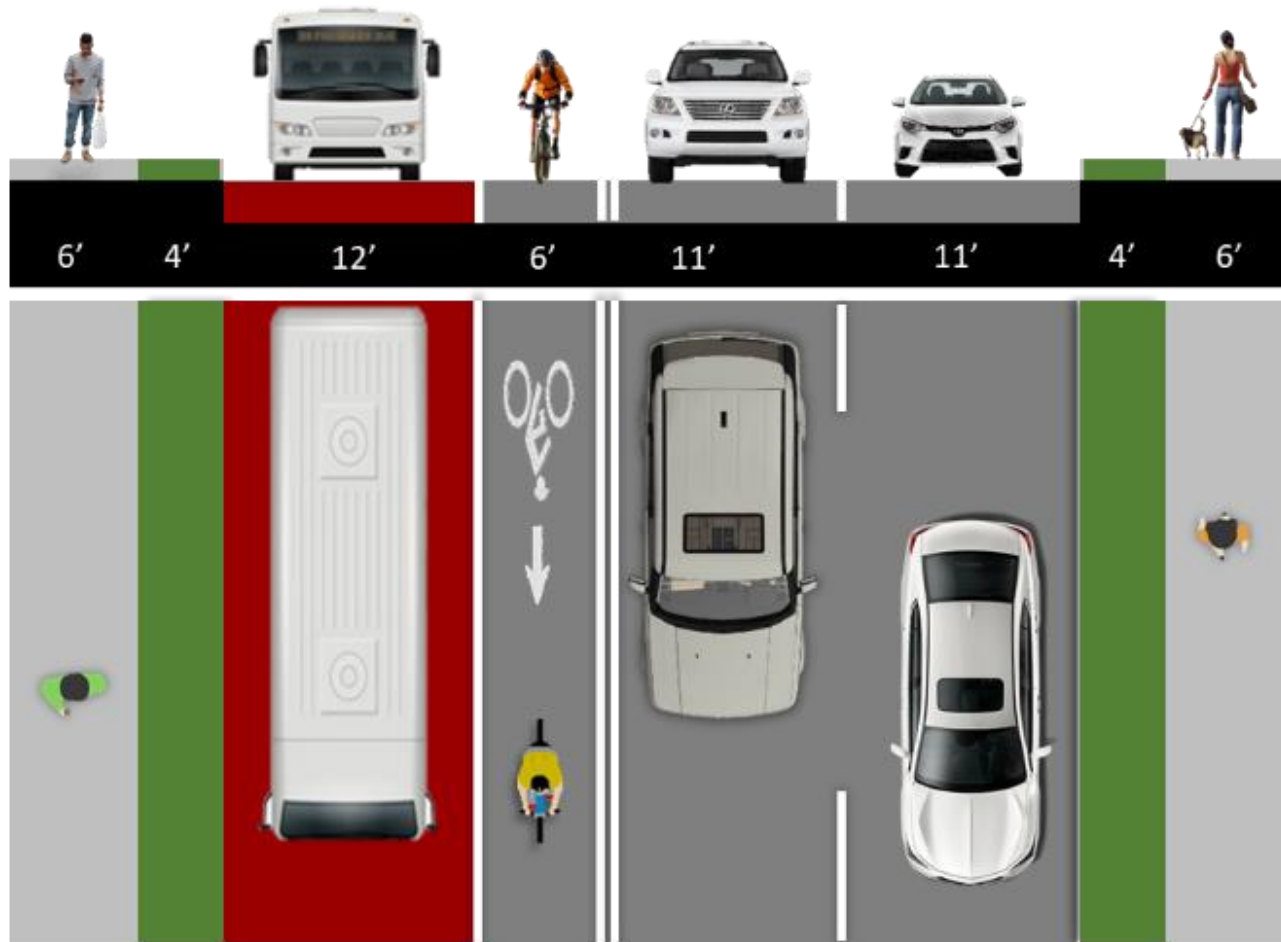
After Lane Repurposing



FLORIDA DEPARTMENT OF TRANSPORTATION
SYSTEMS IMPLEMENTATION OFFICE



Bus Rapid Transit: One-Way Pairs





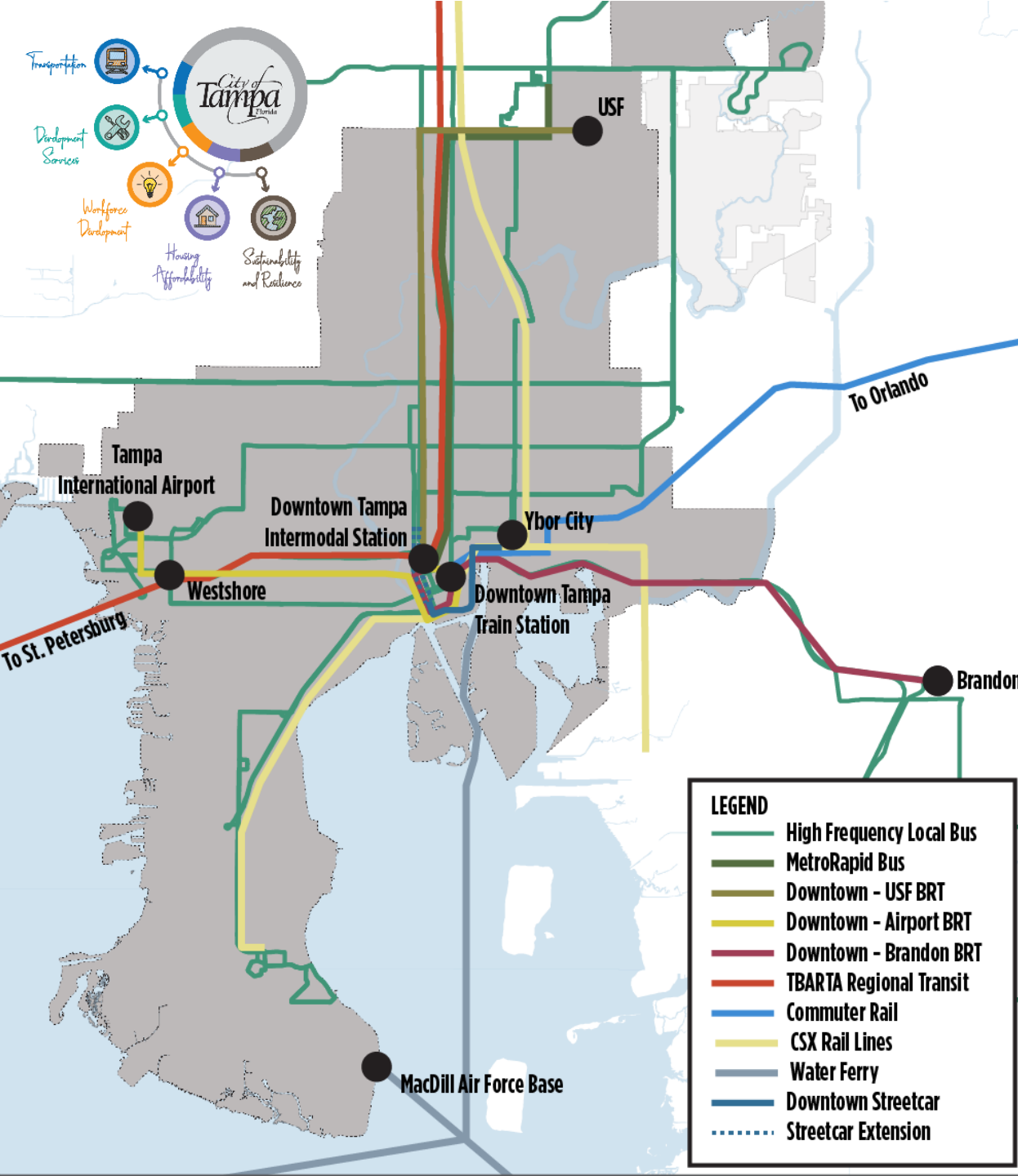
Mayor Castor's T3 Initiative (2019)

Mayor Jane Castor

Transforming Tampa's Tomorrow



- 1. Implement Strategic Transit Projects**
- 2. Reimagine Trails and Greenways as Viable Transportation Options**
- 3. Adopt Vision Zero as a Citywide Policy**
- 4. Reinvent Urban Parking and Mobility**
- 5. Enhance Neighborhood Engagement Activities**



Strategic Transit Projects:

1. **Extend the Streetcar**
2. **CSX Passenger Service**
3. **Rapid Transit from Downtown to Innovation District/University**
4. **Rapid Transit from Downtown to Westshore**
5. **Expand bus service**
6. **Intermodal Centers**
7. **Regional Rail to Orlando**

Rapid Transit from Downtown to Innovation District



230,000

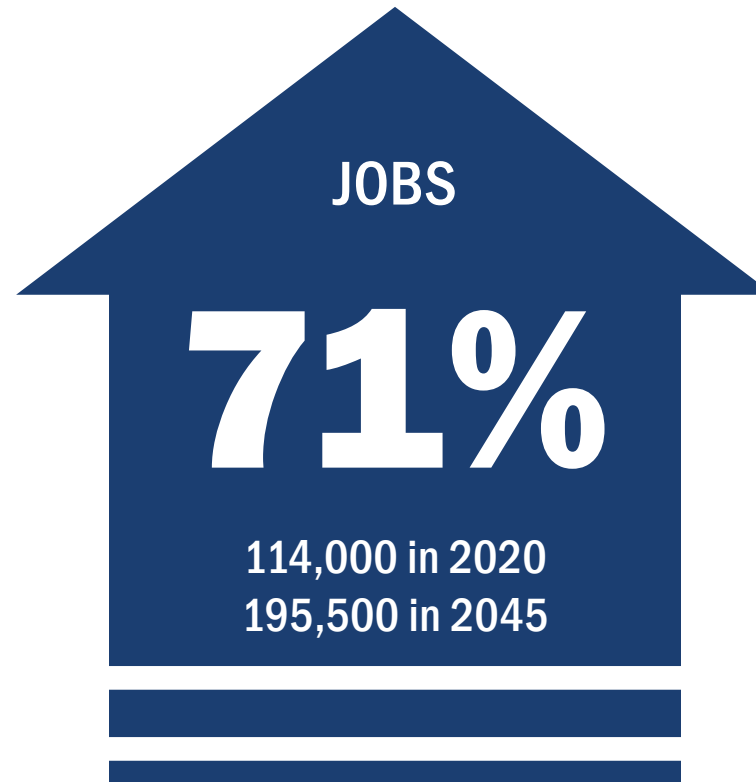
Why BRT on this corridor?

- 1 interstate & 2 state roads**
- 2 transit transfer centers & 7 bus routes**
- 230,000 trips per day**
- 2 Local Governments**
- 1 Local Planning Agency (LPA)**
- 11 registered neighborhood associations**

Rapid Transit from Downtown to Innovation District

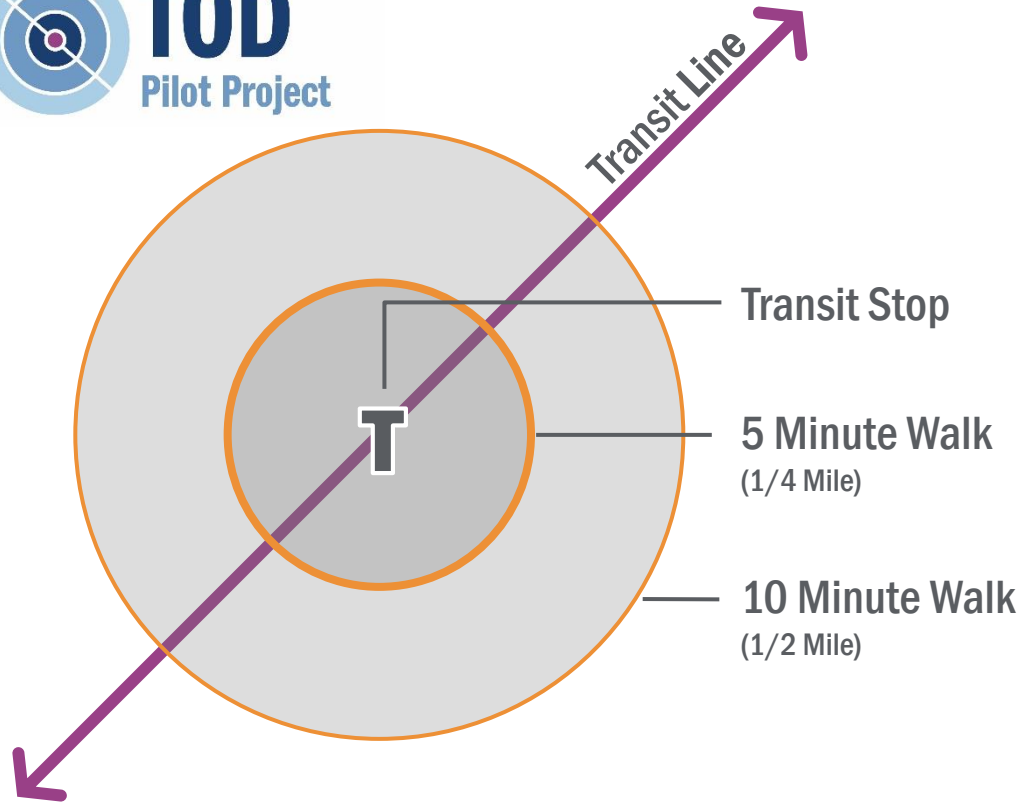


Why BRT on this corridor?



Significant growth projected for communities along the project corridor. From Downtown to USF, regional projections call for over 140,000 new jobs and residents over the next 25 years.

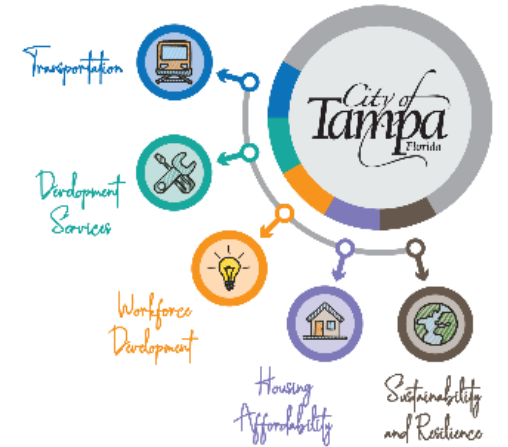
Transit Oriented Development



People within a half-mile radius are 5 times as likely to walk to a major transit stop than others.

—Transit-Oriented Development: Factors and Elements of Success, Center for Transit Oriented Development.

The HART TOD Pilot Project is focused on the **future of communities along the planned routes for HART's Arterial Bus Rapid Transit (BRT) project and the City of Tampa's Streetcar Extension project.**



U.S. Department of Transportation
Federal Transit Administration

Transit Oriented Development



PUBLIC FUNDING / P3s

CRA/TIF Establishment
Business Improvement District Formation
Activating Publicly-Owned Land
Assisting with Site Assembly
Leveraging Federal Programs, inc. LIHTC, Section 8, CDBG, & HOME



PUBLIC IMPROVEMENTS

Investment in Open Space, Recreation, & Public Art
Improvements To Rights-of-Way & Streetscapes
Enhancing Walkability, Safety, & Non-Motorized Transportation



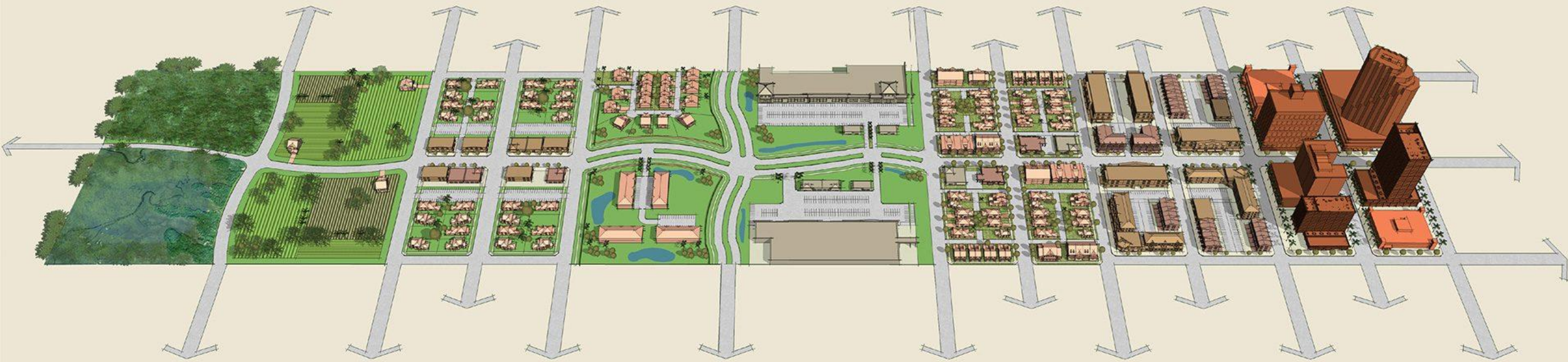
REGULATORY CHANGES

Rezoning or Overlay
Density Bonuses, Reduced Parking Requirements, Setbacks, & Lot Coverage for Greater Density & Walkability



FOCUSING ON EQUITY

Small Business Support
Construction & Preservation of Affordable Housing
Examples inc. Community Land Trusts, Incentive Zoning, Accessory Dwelling Units, Façade Grants



C1-Natural

C2-Rural

C2T-Rural Town

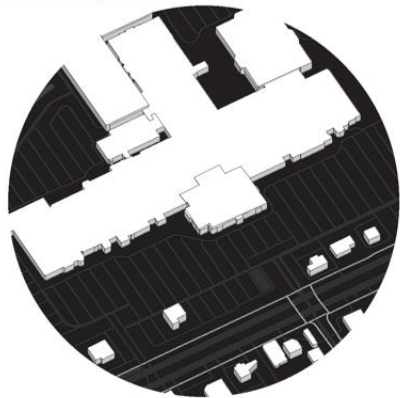
C3R-Suburban Residential

C3C-Suburban Commercial

C4-Urban General

C5-Urban Center

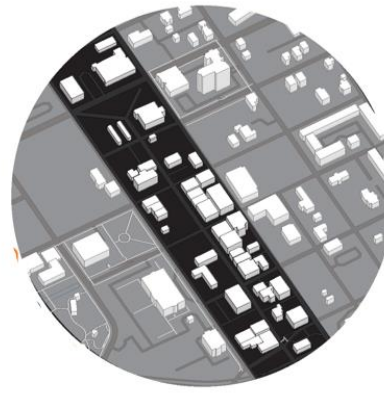
C6-Urban Core



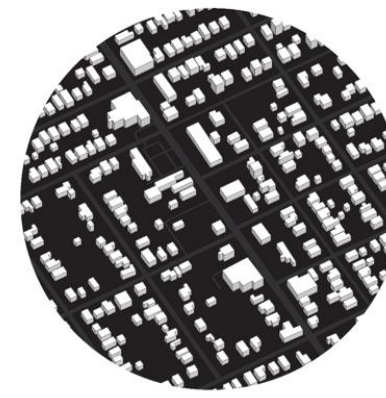
**Auto-Oriented
Regional Center**



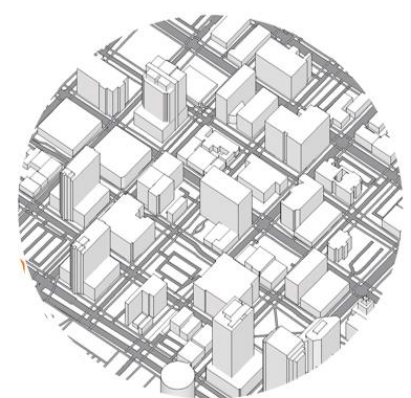
**Auto-Oriented
Community Center**



**Traditional
Main Street**



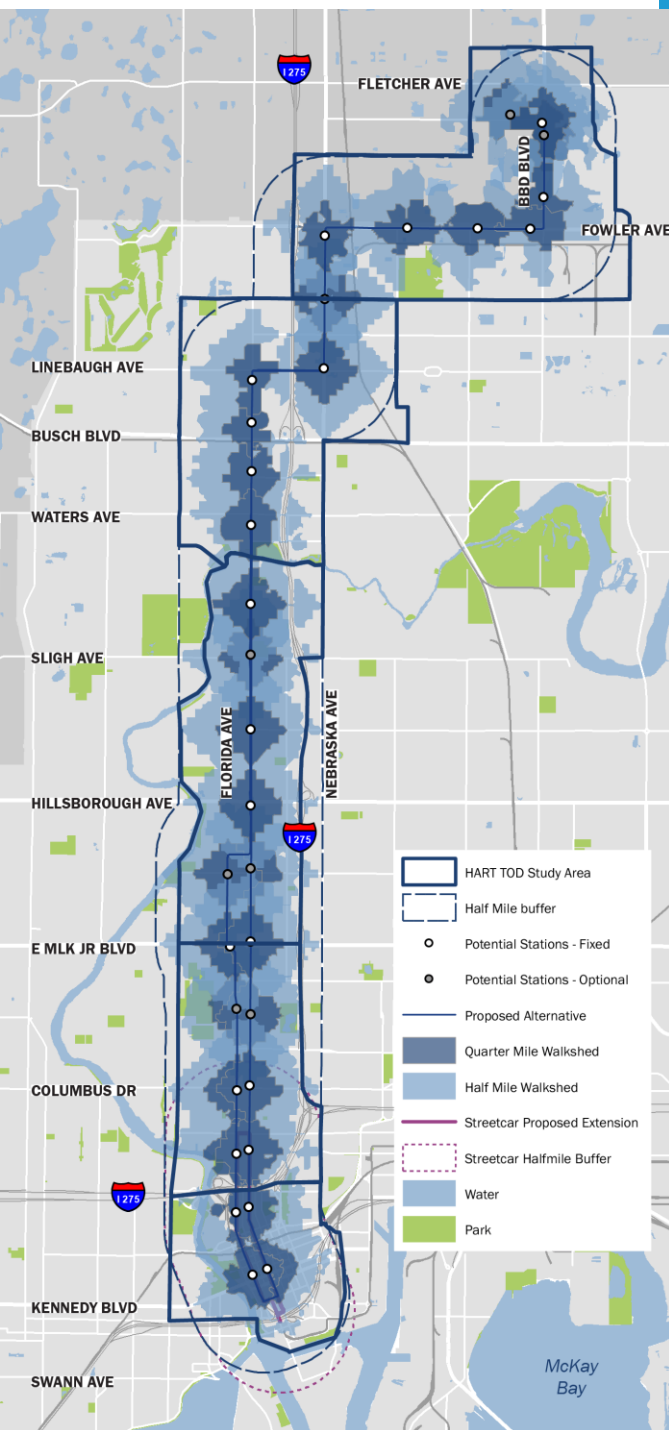
**Mid-Center Main Street/
Neighborhood Center**



Downtown



Context-Sensitive TOD



Remember the Seminole Heights Vision Plan?...

2019



NOTCH Apartments
6307 N. Nebraska Ave
2020

OPENING
2020



2018



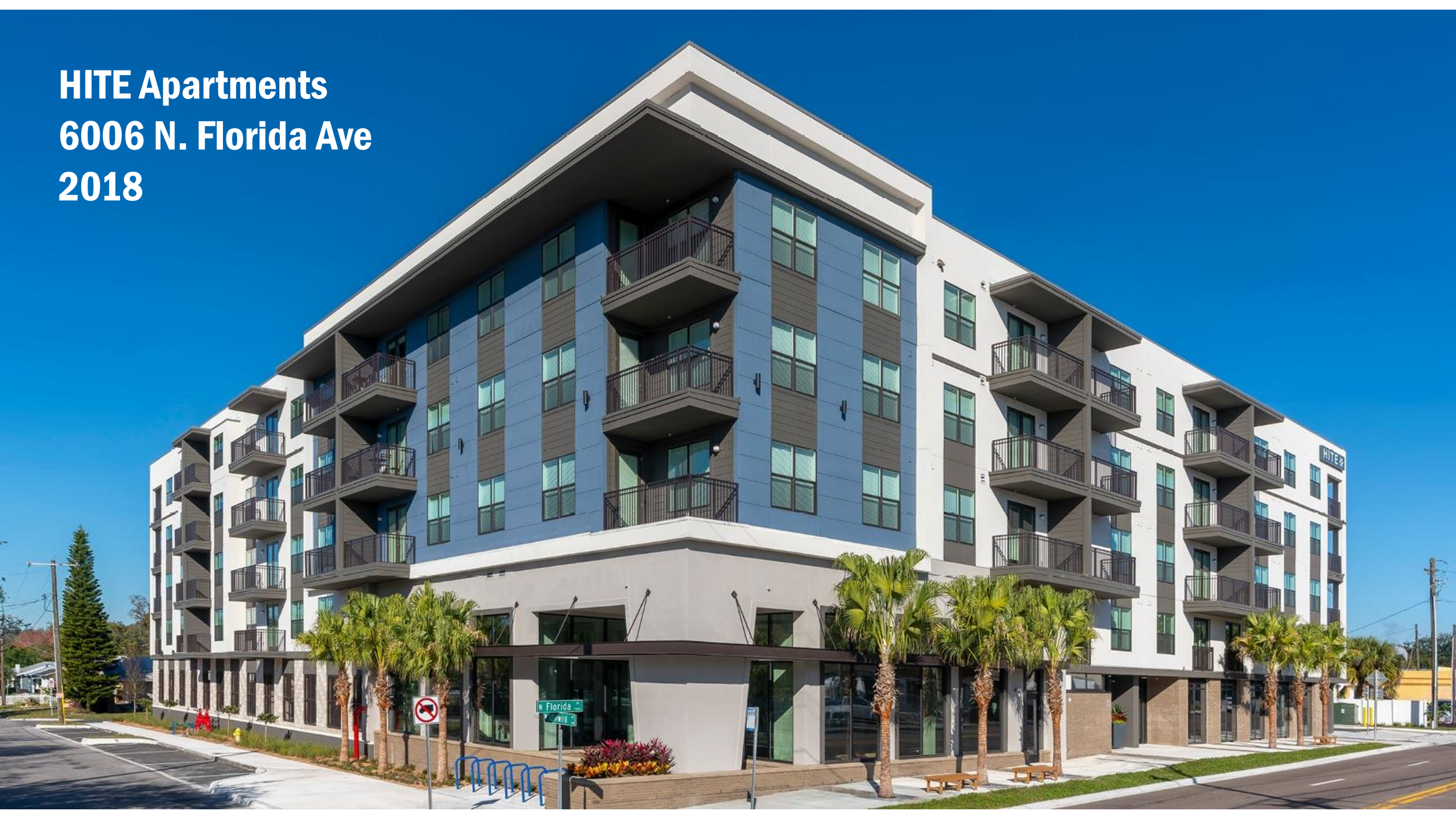
Extra Space Self Storage
7200 N Florida Ave
2020



2010



HITE Apartments
6006 N. Florida Ave
2018



2017

©2017 Google

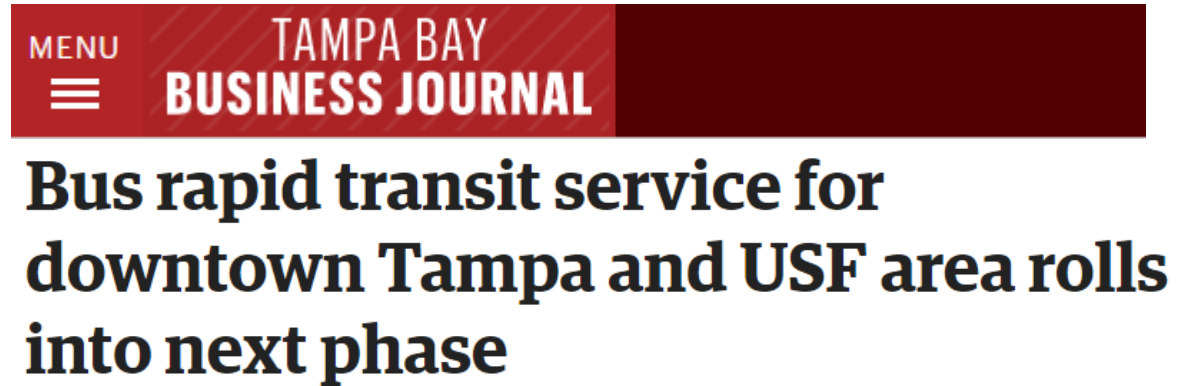


Avenue Lofts
5236 N. Florida Ave
2019



What's Next?

- Heights Mobility – Lane Repurposing Analysis
- Streetcar – Wrapping up PD&E, Beginning 30% Design Fall 2020
- BRT – PD&E complete by Summer 2021
- TOD – Station Area Planning Spring 2021, Implementation Fall 2021



Sprouts Farmers Market is officially coming to Tampa Heights

Store hiring and grand opening details for the Tampa Heights location will be announced at a later date.

BY CHRISTOPHER CANN — AUG 5, 2020 12 PM

Keys to Success

- Everything starts with a vision
- Visions evolve but they usually don't change completely
- Relationships matter – especially leadership across agencies
- Pass the torch, but keep it lit
- MPO involvement & endorsement
- Public support matters – as close to 99% as possible
- Booms & busts
- The path seems straighter looking back



Thank you





Community Planning Partnership

City of Chattahoochee
Chattahoochee Main Street
&
State / Regional / Local Partners

October 2, 2020





U.S. 90 (Washington Street) Streetscape Improvement Plan Chattahoochee, FL



City of
Chattahoochee
Est. 1984





PROJECT BACKGROUND

- Streetscape Improvement Concept Plan funded by DEO:
 - 2019/20 Community Planning Technical Assistance Grant
 - Completed May 2020
- Project administered by the Apalachee Regional Planning Council

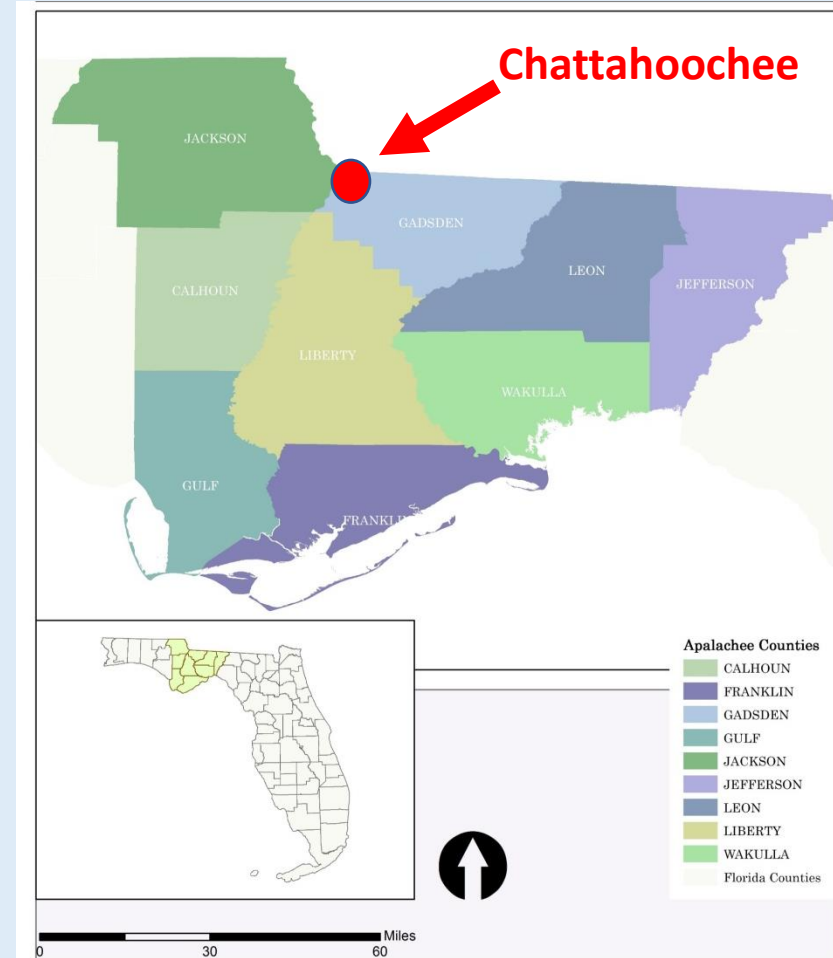




APALACHEE REGIONAL PLANNING COUNCIL

ARPC Mission

To serve its citizens and local governments by providing technical assistance and a forum for communication and collaboration to preserve and enhance the economic, natural and social environments of the Apalachee Region.





PROJECT HISTORY

- Chattahoochee Main Street (2013)
- Florida Main Street Resource Team (2014)
- Chattahoochee Strategic Community Vision Plan (2015)





VISION PLAN (2015)

GOAL 1.2: DEVELOP A VIBRANT & ENHANCED STREETSCAPE PLAN

- Objective 1.2.1: ***Design a streetscape plan for Washington Street that promotes walkability and supports the development of historic Main Street District Design Standards***
- Objective 1.2.2: ***Increase and optimize parking availability in the downtown area and apply efficient driveway and access standards.***





PROJECT HISTORY

- Chattahoochee Main Street (2013)
- Florida Main Street Resource Team (2014)
- Chattahoochee Strategic Community Vision Plan (2015)
- **DEO Community Planning Technical Assistance Grant (2018/19)**
- **Hurricane Michael**
- **DEO Community Planning Technical Assistance Grant (2019/20)**
- **ARPC performed the Scope of Work**



Project Limits



Existing Conditions





SCOPE OF WORK

- Identify desired streetscape elements
- Incorporate Complete Streets & Main Street principles
- Public Workshops (2)
- Minimum of two (2) alternative concept plans
- Seek City adoption of a final concept plan





PROJECT SCHEDULE

- **Kick-off (November 2019)**
- Public Workshop #1 (November 2019)
- Public Workshop #2 (February 2020)
- 1st Public Hearing (April 2020)
- Adoption Hearing (May 2020)





PROJECT PARTNERS





PROJECT PARTNERS



- Central Office: Roadway Design Office
 - Complete Streets Program
- District III (Chipley):
 - Planning Office
 - Complete Streets Coordinator
 - Transportation Planning
 - Landscape Design





PROJECT PARTNER COLLABORATION

- Intersection improvements / design constraint issues
- Parking options
- Landscape design options
- Pedestrian crosswalk / median treatments
- Side-street / driveway access
- Pedestrian-scale streetlighting
- Improved stormwater drainage
- Connectivity to alleyways and other key locations
- Examples of successful streetscape improvements in FL

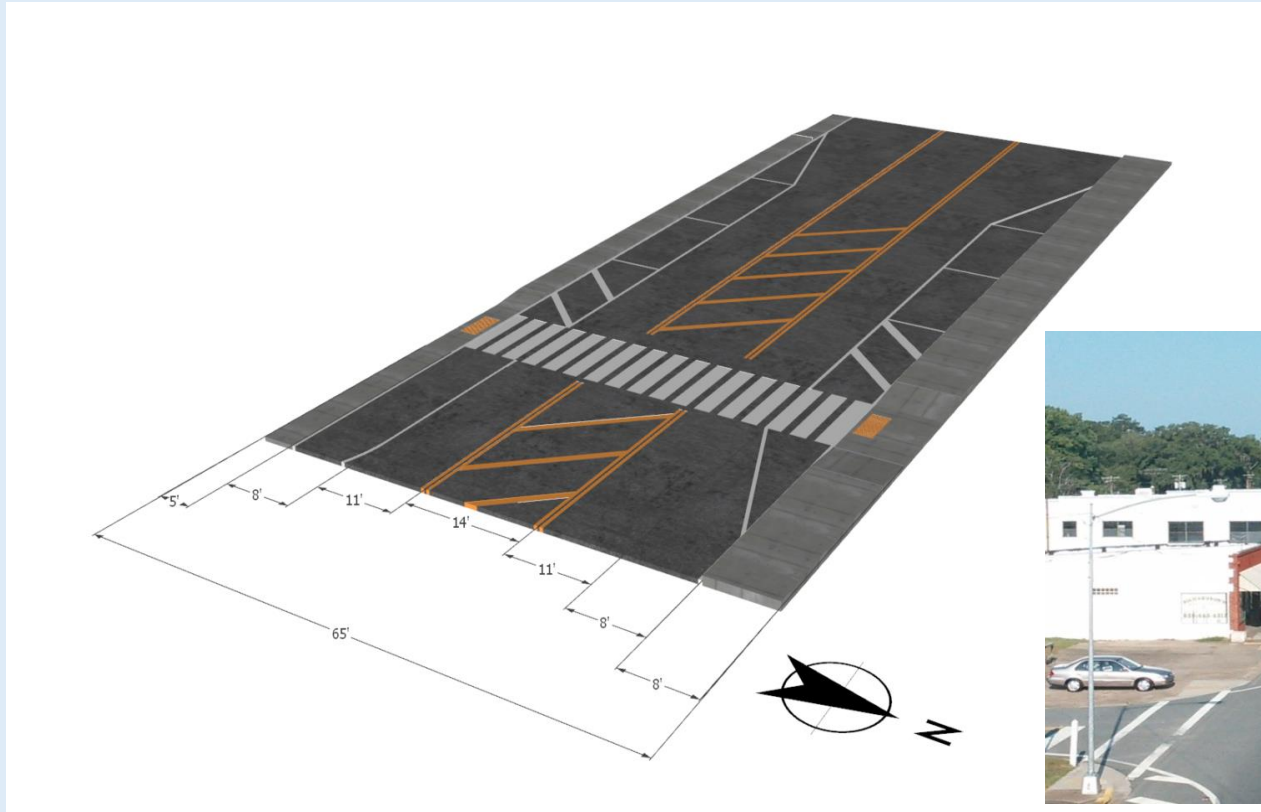




Existing Condition



LOCAL PARTNERSHIPS, REGIONAL IMPACT.

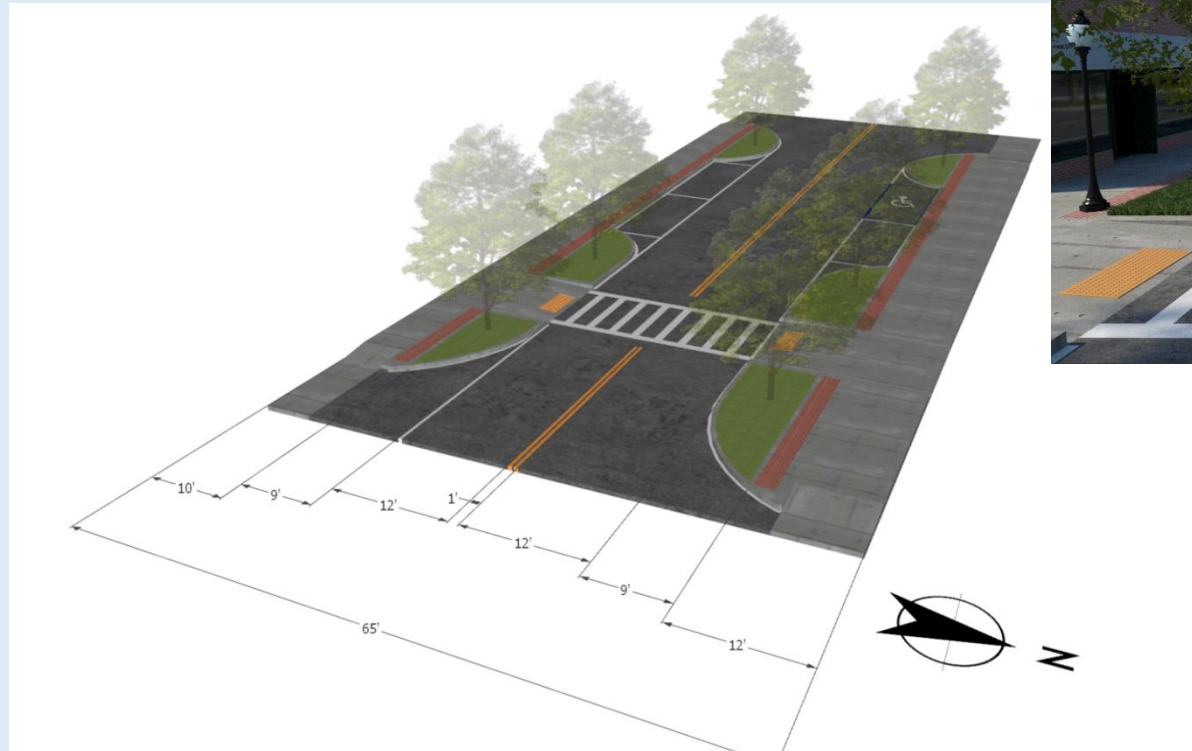




Approved Concept Design



LOCAL PARTNERSHIPS, REGIONAL IMPACT.





Approved Concept Design

LOCAL PARTNERSHIPS, REGIONAL IMPACT.



Existing



Approved Concept



Approved Concept Design



City of
Chattahoochee
Est. 1994

LOCAL PARTNERSHIPS, REGIONAL IMPACT.





Approved Concept Design

LOCAL PARTNERSHIPS, REGIONAL IMPACT.





Approved Concept Design



City of
Chattahoochee
Est 1894

LOCAL PARTNERSHIPS, REGIONAL IMPACT.





Approved Concept Design



City of
Chattahoochee
Est 1984

LOCAL PARTNERSHIPS, REGIONAL IMPACT.





ENGAGE PROJECT PARTNERS EARLY!!

E





CONTACT

LOCAL PARTNERSHIPS, REGIONAL IMPACT.

Ben Chandler, AICP

Apalachee Regional Planning Council

Email: bchandler@arpc.org

Office: 850.488.6211 (ext. 111)

CONTACT INFORMATION

Jennifer Z. Carver, AICP

FDOT Office of Policy Planning
850.414.4820
Jennifer.carver@dot.state.fl.us

Christine Fasiska, PE

FDOT District Four
954.777.4480
Christine.Fasiska@dot.state.fl.us

Sabrina Aubery, PE

FDOT District Four
954.777.4585
Sabrina.aubery@dot.state.fl.us

Gerald Goosby

FDOT Systems Implementation
Office
850.414.4820
Gerald.goosby@dot.state.fl.us

Stephen Benson, AICP, CNU-A

City of Tampa Mobility
Department
813.274.8185
Stephen.benson@tampagov.net

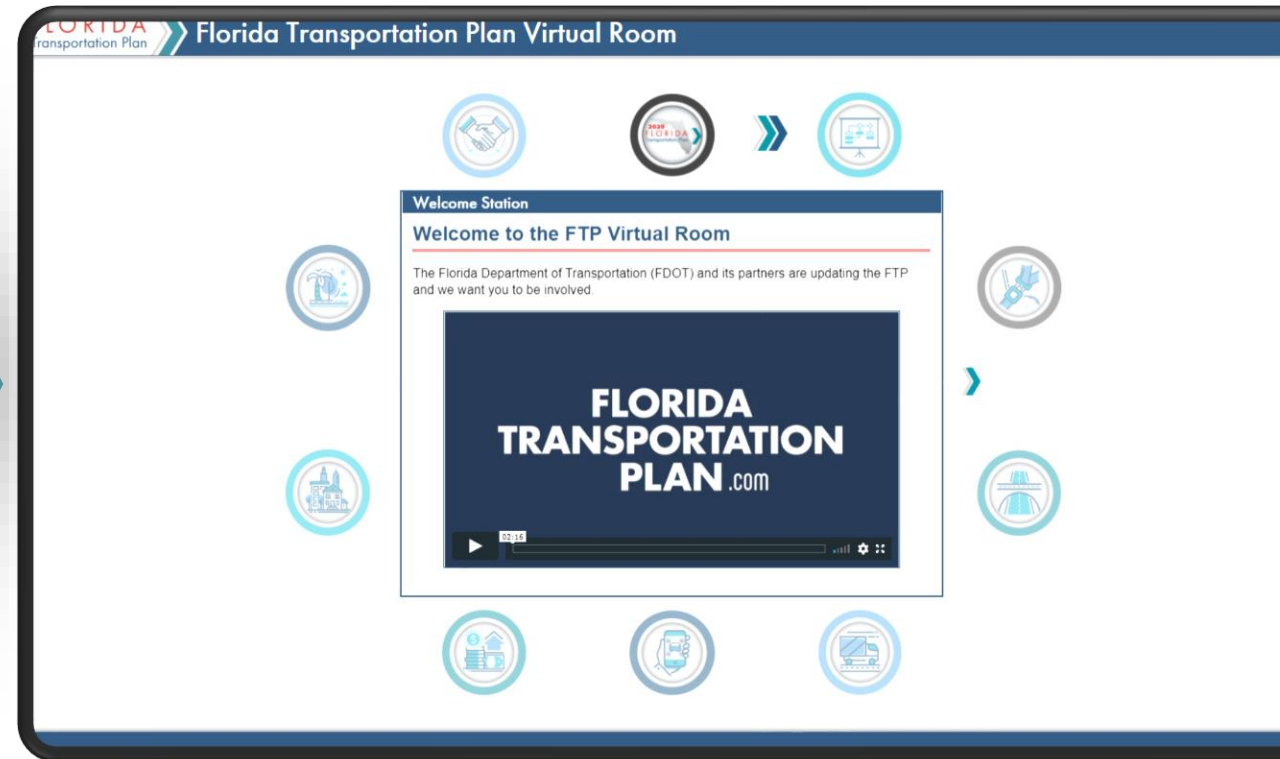
Ben Chandler, AICP

Apalachee Regional Planning
Council
850.488.6211 ext. 111
bchandler@arpc.org

FTP VIRTUAL ROOM

- » Walk through the seven goal stations to provide your input on the draft strategies and share your ideas for reaching our goals.
- » No specific time, always open!
- » Opening Monday, October 5th

www.floridatransportationplan.com



THANK YOU FOR ATTENDING

- » Up Next: **Broad Uses, Broad Needs... Friday, October 9 @ 9am**
- » Please complete the follow up survey that will be sent via email at the conclusion of this webinar



Please take a moment to visit the FTP Virtual Room and leave your comments
www.floridatransportationplan.com