



# MPO Liason

---

## TRAINING 101

US Census and MPO Boundaries



OFFICE OF POLICY PLANNING

# Census Designation of Urban Areas



## Urban Areas (UAs)

at least

**2,000** or **5,000**  
housing units or people



## ~~Urbanized Areas (UZA)~~

~~Replaced with urban areas with  
50,000 residents or more~~

## UA designations critical to transportation programs

FHWA/FTA programs impacted by

- MPO designation
- Application of requirements
- Funding eligibility
- Application of air quality conformity requirements

# MPO Designations

- MPO designated for each **UA  $\geq$  50,000**
- MPO carries out metropolitan transportation planning process
  - Within Metropolitan Planning Area (MPA)



New MPO must be fully operational  
**no later than 6 months** after designation

# Membership Apportionment Plans

## Apportionment

MPO composition as determined by Florida/local government entities

Governor apportions MPO membership with agreement

MPO reviews membership with Census

MPO submits Membership Apportionment Plan

Governor approves the Apportionment Plans

# Membership Apportionment Plan Content

2010/2020 Census population data

Current/proposed MPO membership

- Including methodology (if proposing changes)

MPA Boundary map

MPO Board resolution adopting



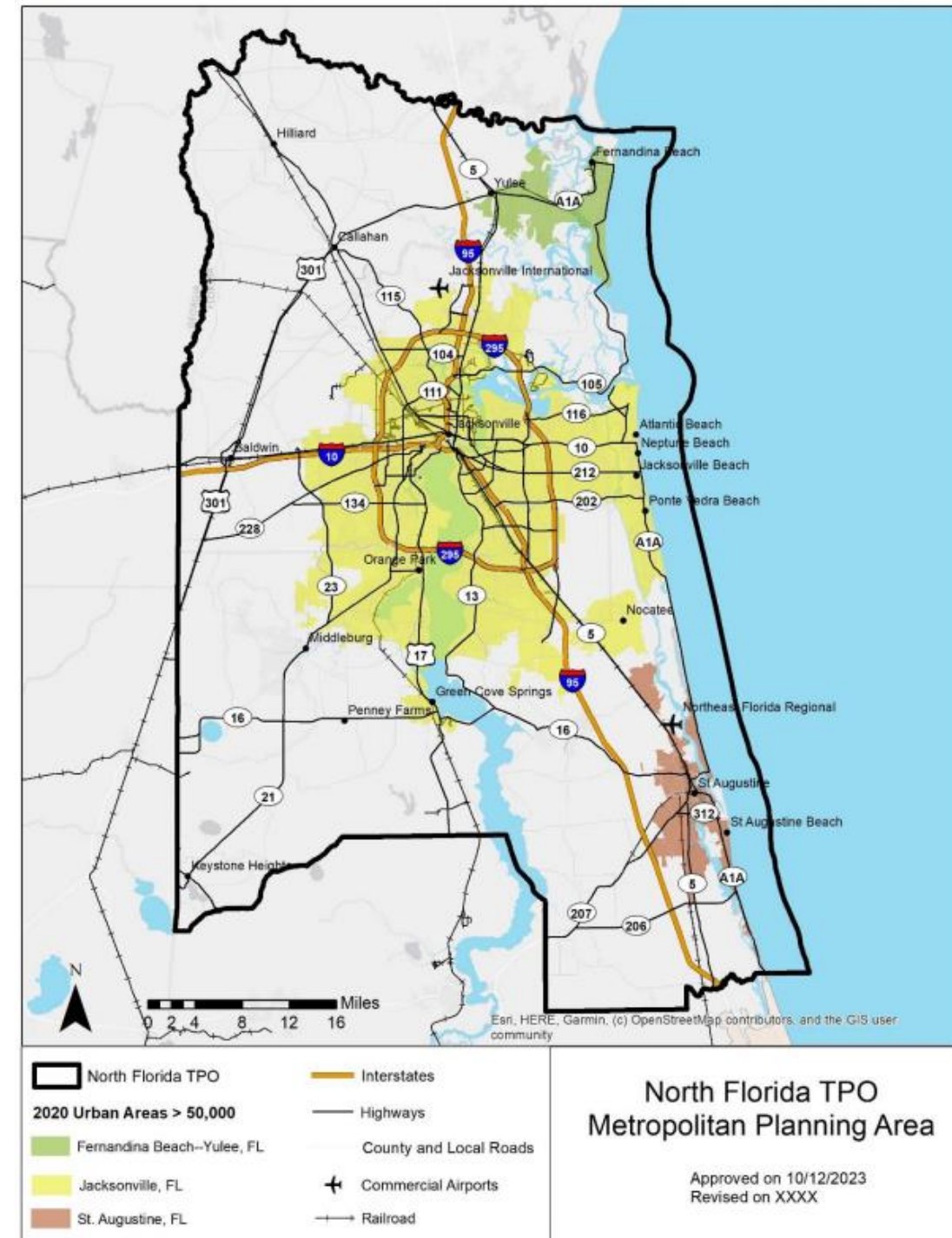
# MPA Boundaries

- Determined by agreement between MPO/Governor
- MPA encompasses  
UA + contiguous area
- An MPA Boundary may encompass more than one UA
  - IJJA requires MPOs to ensure planning consistency of any data used in the planning process.
- MPA boundaries cannot overlap
- MPO reviews MPA boundaries after Census



# MPA Boundary Map

- Map adopted with Membership Apportionment Plan
- MPO submits both to OPP
- OPP provides copies to FHWA/FTA following Governor approval

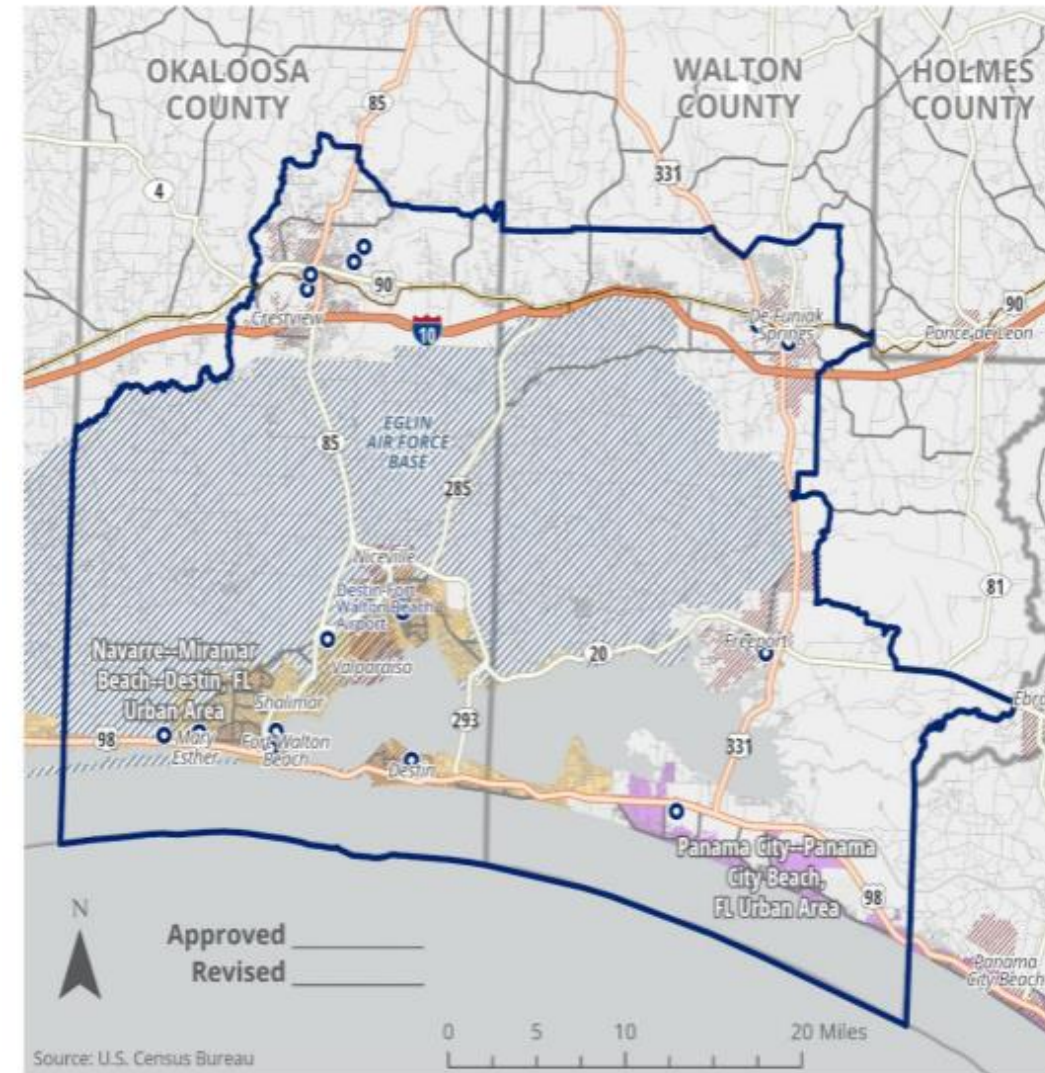


# MPA Boundary Map

## Maps must clearly designate the following:

- 2020 urban areas  $\geq 50,000$
- North arrow graphic
- Legend with map date
- Major city/county roadways
- Interstates and highways
- Transit/intermodal facilities and airports
- MPA Boundary

Figure 1: Okaloosa-Walton Metropolitan Planning Area Boundary Map



# Redesignation and Apportionment

MPO redesignated by agreement between Governor and local governments

Redesignation required when existing MPO proposes:

MPO seeking redesignation must submit apportionment Plan

Substantial change in proportion of voting members, or

Substantial change in decision-making authority/responsibility



# Redesignation/Appportionment – Role of the Liaison

- **Provide guidance to MPO**
- **MPO Apportionment Plan includes the following:**
  - 2010/2020 Census population data
  - Current/proposed MPO membership
  - Methodology used to determine proposed changes
  - MPA Boundary map
  - MPO Board resolution adoption Apportionment Plan
- **If Governor disapproves Apportionment Plan**
  - Liaison helps MPO address issues



# Interlocal Agreement



Addresses transportation planning requirements identified in Federal and State law and regulations

- Parties – FDOT/government entities designated by the Governor



Interlocal agreement reviewed **every 5 years**

- Sooner when MPO membership changes

# FDOT/MPO Agreement

**Provides Federal financial assistance**

- Found in UPWP

**Establishes terms and conditions for Federal assistance**

**Creates framework for FDOT/MPO cooperation in UPWP development**



Reviewed and updated  
**every 2 years**

# PTGA

## **Provides State funding to MPOs**

- Assists in meeting FTA local match

## **Outlines administrative/ program requirements**



Executed  
**Annually**

# Intergovernmental Coordination and Review and Public Transportation Collaborative Planning Agreement (ICAR)

## Promotes cooperation between

- FDOT
- MPO
- Regional Planning Council (RPC)
- Local government agencies

**Goal – optimize planning/programming on transportation system in MPA**

**Ensure cooperation on UPWP, TIP, LRTP, and corridor/subarea studies**



Term of  
**5 years**

# What We Reviewed

- Census Designations of Urban Areas
- MPO Designations
- Apportionment Plans
- MPA Boundaries
- Redesignation and Apportionment Plans
- Agreements
  - Interlocal Agreement
  - FDOT/MPO Agreement
  - ICAR
  - PTGA



# Resources

- [MPO Handbook. Chapter 2](#)
- [Apportionment Plan Webinar Resources](#)
  - [Meeting Slides](#)
  - [Webinar Q&A](#)
  - [Apportionment Plan Template](#)
  - [Apportionment Plan Guidance](#)
- [Interlocal Agreement](#)
- [MPO Agreement](#)
  - [Amendment to MPO Agreement](#)
- [PTGA](#)
- [ICAR](#)