

Florida Department of Transportation District 7

New West Central Florida I-4 Truck Parking Facility

More than doubling I-4's commercial truck parking capacity from Tampa to Daytona Beach

GRANT TYPE

Infrastructure For Rebuilding America (INFRA)

PROJECT TYPE

Rural

PROJECT NAME

I-4 Truck Parking Facility

APPLICANT/ PROJECT SPONSOR

Florida Department of Transportation District 7

GRANT REQUEST

\$15 million

NON-FEDERAL FUNDING

\$10 million

TOTAL PROJECT COST

\$25 million

PROJECT LOCATION

Plant City, FL

WAS A BUILD OR INFRA APPLICATION FOR THIS PROJECT SUBMITTED PREVIOUSLY?

No

PROJECT DESCRIPTION

The **I-4 Truck Parking Facility** will play a vital role in **strengthening America's supply chain and Florida's weather-related resiliency**. The project will be constructed in West Central Florida along the heavily used I-4 corridor that connects the East and West coasts of Florida, from Tampa to Daytona Beach.

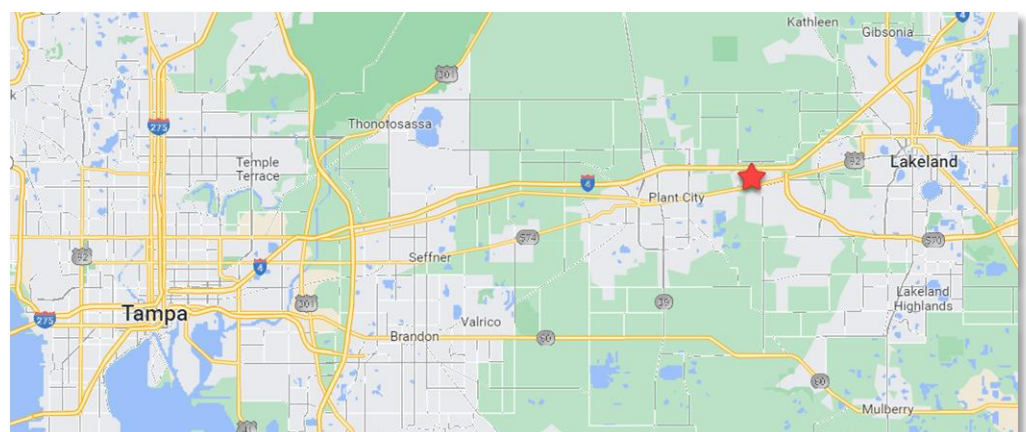
The entire I-4 corridor from Tampa to Daytona Beach only has 90 public truck parking spaces. This project will more than double that amount by adding 120 truck parking spaces.

According to the American Transportation Research Institute, truck parking is consistently one of the highest-rated issues, with the Commercial Vehicle Operators ranking it first in 2021. Per the Owner Operators and Independent Drivers Association, truck drivers spend an average of 56 minutes per day searching for a truck parking spot.

The area surrounding the **I-4 Truck Parking Facility** has seen a dramatic increase in the amount of industrial development over the last 5 years. It currently has over 15 million square feet of logistics and manufacturing-related uses with an additional 5 million square feet planned or under construction.

FDOT recently completed advance acquisition of the 40 acres parcel for this project. No additional Right of Way is needed.

PROJECT LOCATION

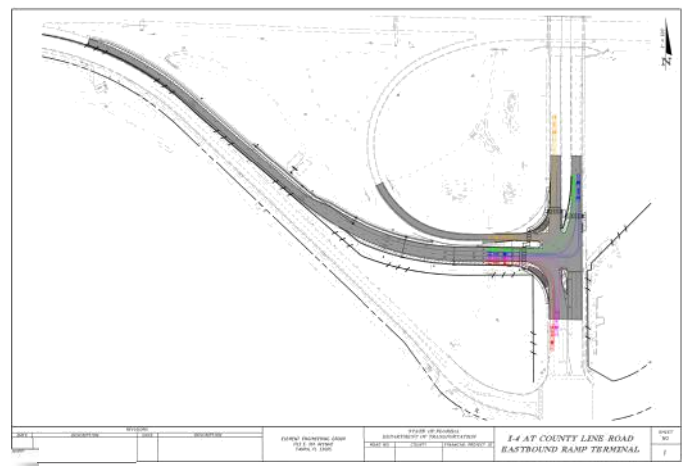


PROJECT BENEFITS

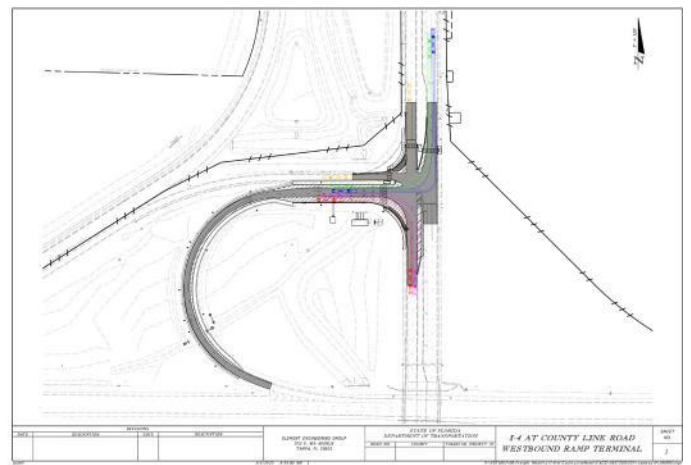
- **Strengthens America's supply chain** by providing safe and secure truck parking in an area of high demand so that truckers can meet their hours of service rest requirements.
- **Strengthens Florida's weather-related resiliency** by serving as an emergency-response fuel and supply staging area for the West Central Florida for resiliency effort in response to natural disasters and other large scale activation events. Rescue vehicles and response teams can be staged at the facility and following the emergency event, the facility will be transformed into a relief supply staging area.
- **Provides 120 bi-directional truck parking spaces** at I-4 and County Line Rd in West Central Florida. Currently, the entire I-4 corridor only has 90 public truck parking spots from Tampa to Daytona Beach.
- **Incorporates the Truck Parking Availability System** to provide drivers real-time parking information.
- **Constructs sidewalks** to provide safe passage to the nearby restaurants and hotels. There are also two truck fueling stations within 1,000 feet of the **I-4 Truck Parking** facility.
- **Reduces the amount of commercial truck emissions** by providing electric hook-ups for utilization during mandatory trucker rest hours.
- **Constructs ramp improvements** to provide easy Eastbound and Westbound access to the **I-4 Truck Parking Facility**.



Truck Parking Facility Concept



I-4 Eastbound Ramp Terminal Concept



I-4 Westbound Ramp Terminal Concept