

Planning for Florida's Transportation Future

Florida Transportation Plan Strategic Highway Safety Plan

presented by

Alison Stettner, moderator
FDOT Office of Policy Planning

Dana Reiding
FDOT Office of Policy Planning

Lora Hollingsworth
FDOT Safety Office

November 13, 2020

FLORIDA
Transportation Plan

Your Florida. Your vision. Your plan.

Today's Panel

Alison Stettner, Director of Office of Policy Planning, FDOT

Lora Hollingsworth, Chief Safety Officer, FDOT

Dana Reiding, Administrator/FTP Project Manager, FDOT

How to Comment

- Comment or ask in the question & answer chat box
- Go to www.floridatransportationplan.com and
 - Visit the FTP Virtual Room and provide comments
 - Read the FTP Policy Element document and complete the comment form





FLORIDA

STRATEGIC HIGHWAY SAFETY PLAN

TARGET
ZERO
FATALITIES & SERIOUS INJURIES

NOVEMBER 2020



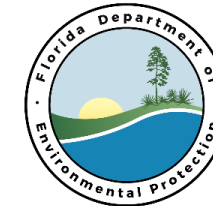
Vision:

**A Fatality-Free
Roadway System**



FTP/SHSP Alignment

FTP Steering Committee Member Organizations



FTP Safety Subcommittee



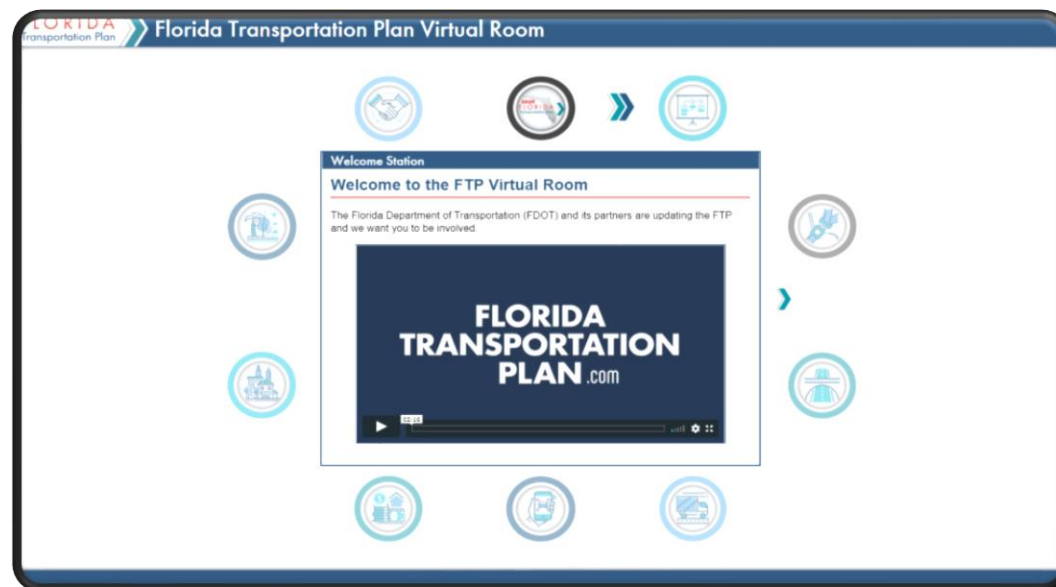
FLORIDA SHERIFFS
ASSOCIATION



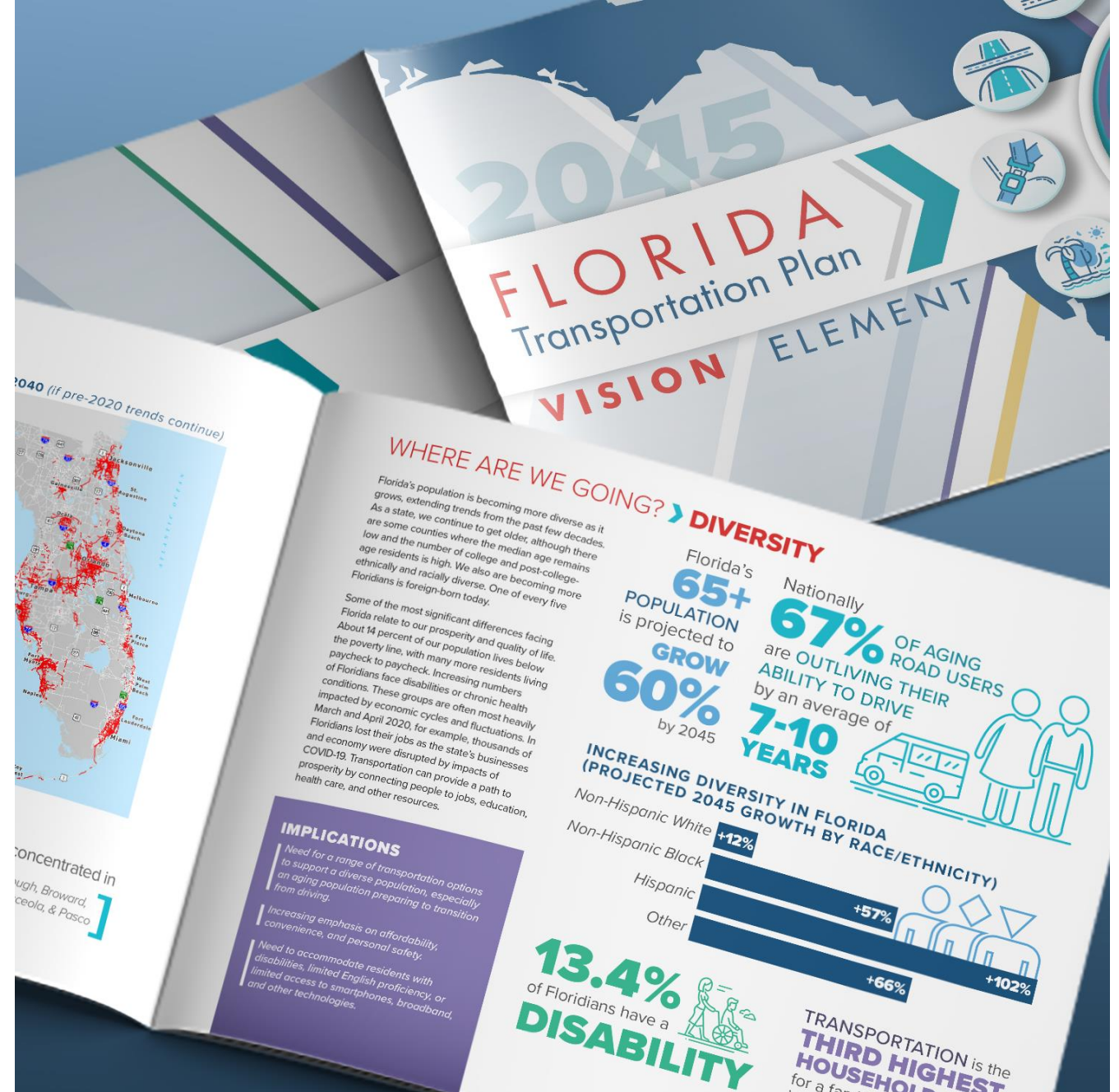
Partner and Public Outreach

- Partner Briefings
- TransPlex & Other Webinars
- Targeted Outreach
- Social Media
- Survey
- Comment Forms
- Virtual Room
- Coalitions
- Internal FDOT Teams
- Public Comment Period

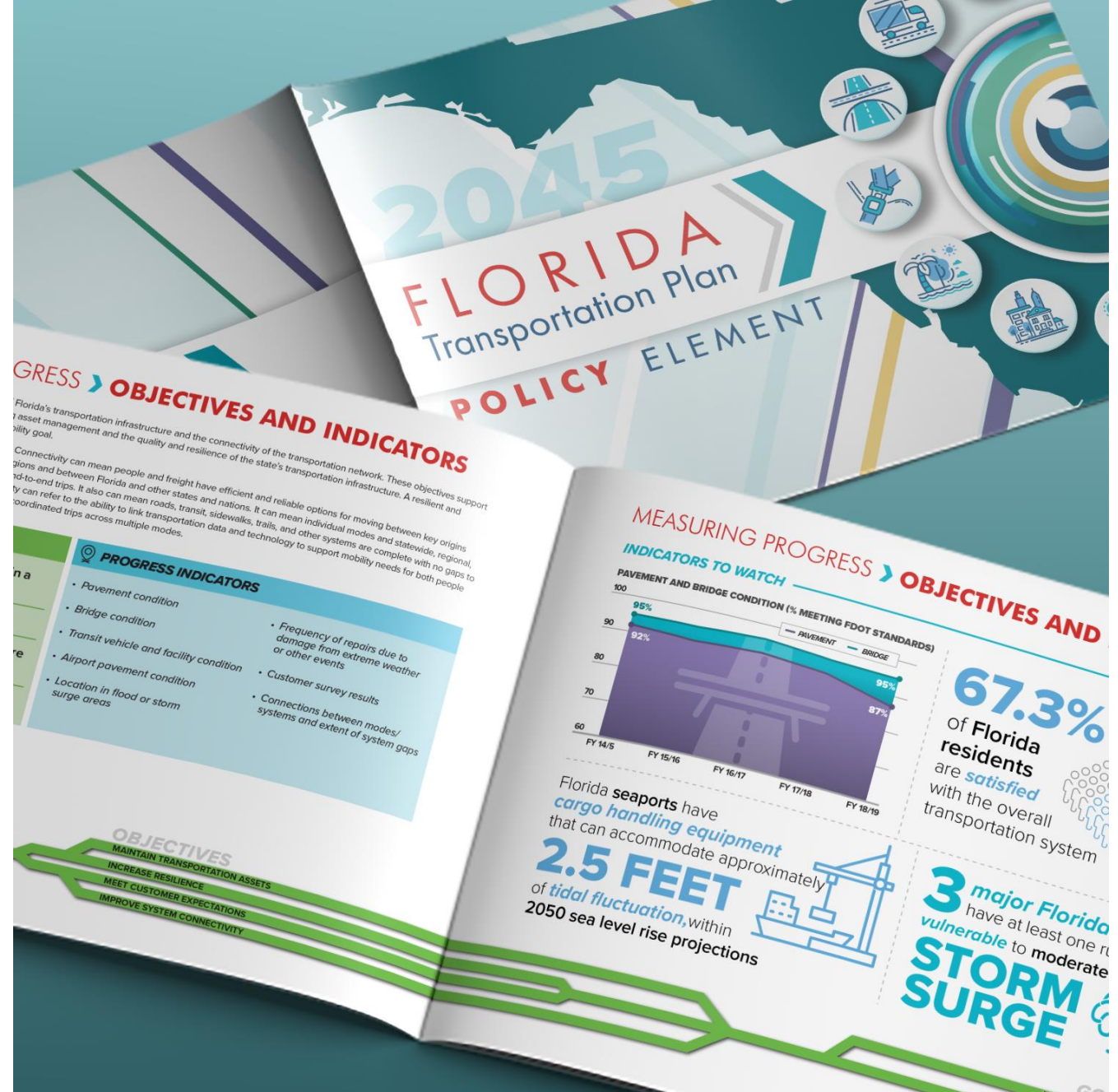
	Total Briefings	Total Attendees
Central Office	95	6,891
District Offices	149	5,496
Total	244	12,693



FTP Vision Element

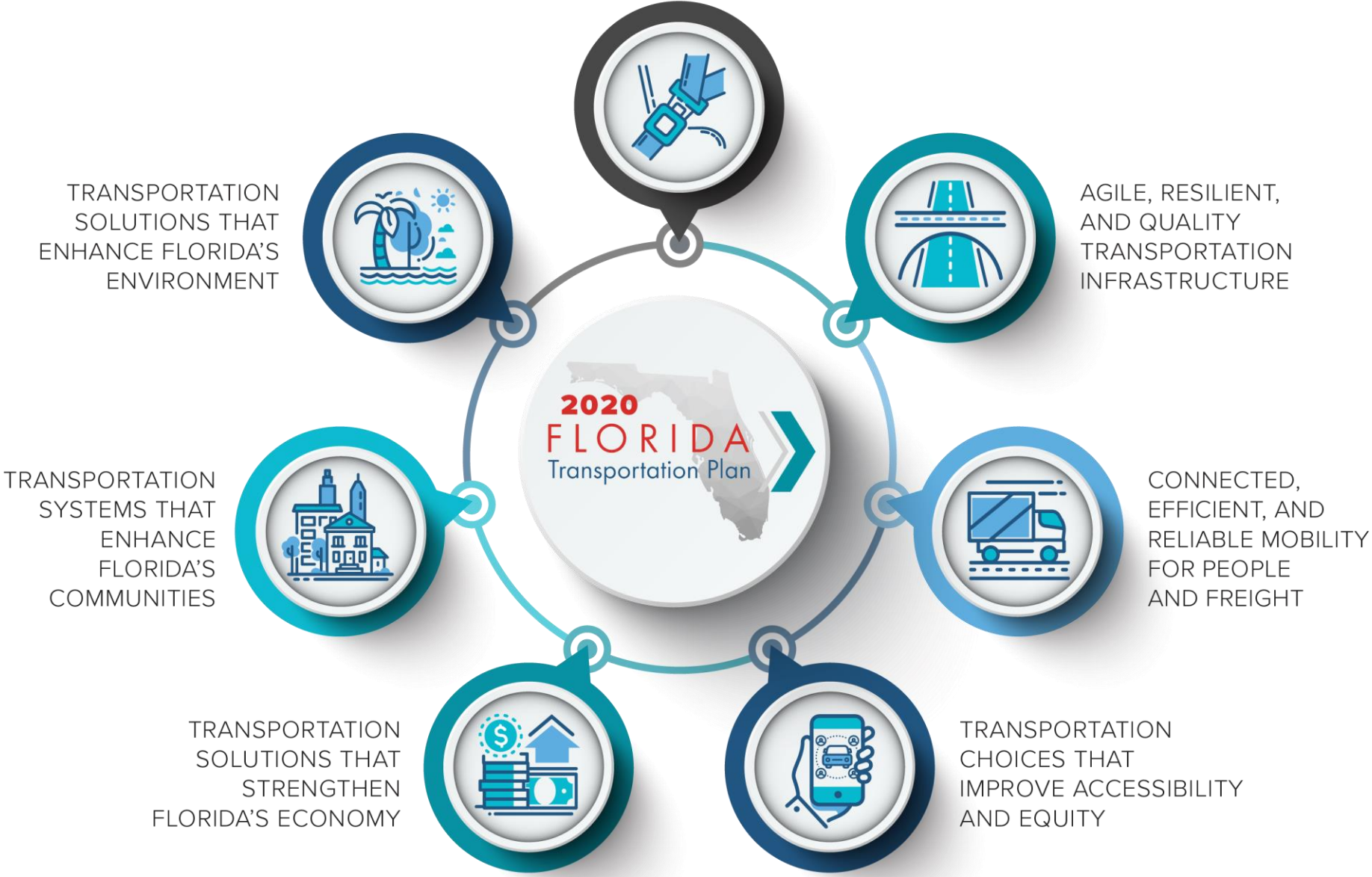


FTP Policy Element










SAFETY AND SECURITY FOR
RESIDENTS, VISITORS, AND BUSINESSES

FTP Goals



FTP Strategy Overview

GOALS	WHERE WE ARE TODAY	WHERE WE ARE HEADED
 SAFETY AND SECURITY	Focus on 4Es (engineering, education, enforcement, emergency services) of traffic safety to reduce fatalities and injuries	Use emerging technologies and address land use and socioeconomic factors to improve safety and security for all modes
 INFRASTRUCTURE	Maintain existing facilities in a state of good repair; focus on physical infrastructure	Evaluate and adapt infrastructure to become more resilient to risks and take advantage of innovations; expand definition of infrastructure to include technology
 MOBILITY	Focus on increasing system efficiency and reducing delay	Prioritize the movement of people and freight; accelerate new technologies and options to increase reliability and service
 ACCESSIBILITY AND EQUITY	Expand transportation choices	Enhance access for all Floridians to jobs, education, health care, and other services, especially for those who need it most
 ECONOMY	Emphasize global competitiveness and trade	Support regional and local job creation and investment as well as global commerce; support a more resilient and diverse economy
 COMMUNITIES	Support quality places	Reflect community visions and values
 ENVIRONMENT	Minimize impacts of transportation on the environment	Proactively enhance and restore natural systems for future generations

FTP Strategies

FOUNDATIONAL STRATEGIES

Strategically align investments with goals

Provide sustainable and reliable transportation funding sources

Develop and retain a skilled transportation workforce

KEY STRATEGIES

Commit to vision zero as our top priority

Identify and mitigate risks to Florida's transportation system

Transform Florida's major transportation corridors and hubs

Strategically complete transportation systems and networks

Expand transportation infrastructure

Prioritize mobility for people and freight

Further access to opportunity for those who need it most

Integrate land use & transportation decisions

Develop transportation systems to protect and enhance air quality, water quality and quantity, critical lands, and habitats

Strategic Highway Safety Plan

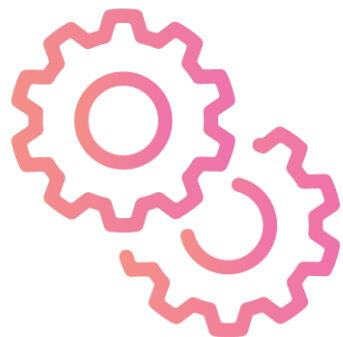


SHSP Strategy Overview

	WHERE WE ARE TODAY	WHERE WE ARE HEADED
EMPHASIS AREAS	Most prevalent causes of crashes + traffic records	Most prevalent causes of crashes + traffic records + emerging emphasis areas related to high-impact crashes or risks associated with new innovations
KEY STRATEGIES	Addressing individual risks and behaviors through the 4Es of traffic safety (engineering, education, enforcement, emergency response)	Continuing emphasis on 4Es + implementing systemwide improvements by addressing socioeconomic, infrastructure, land use, and operations/technology issues
MODES	Roadway emphasis	Safety for all modes, with focus on roadway and modal connections
PARTNERSHIPS	Focus on transportation engineering and planning, law enforcement, education, and emergency medical services	Expanded collaboration with public health, technology, insurance, land use, and economic development partners
PROGRAM STRUCTURE	Safety as a standalone program	Safety as an essential element of every program
PRIORITY	Safety as a high priority transportation issue	Safety as the highest priority transportation issue + as a critical public health issue

Key SHSP Strategies

FOUR Es OF TRAFFIC SAFETY



ENGINEERING



ENFORCEMENT



EDUCATION

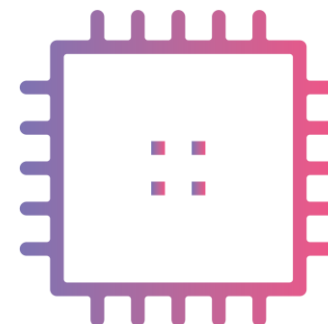


EMERGENCY RESPONSE

OTHER WAYS TO HELP IMPROVE SAFETY



DATA



TECHNOLOGY



COMMUNITY CONTEXT



RESOURCES & POLICIES

SHSP Emphasis Areas

ROADWAYS



LANE
DEPARTURES



INTERSECTIONS

ROAD USERS



PEDESTRIANS &
BICYCLISTS



AGING ROAD
USERS



MOTORCYCLISTS



COMMERCIAL
MOTOR
VEHICLES



TEEN DRIVERS

USER BEHAVIOR



IMPAIRED DRIVING



OCCUPANT
PROTECTION



SPEEDING &
AGGRESSIVE
DRIVING



DISTRACTED
DRIVING

CROSS CUTTING



TRAFFIC
RECORDS &
INFORMATION
SYSTEMS



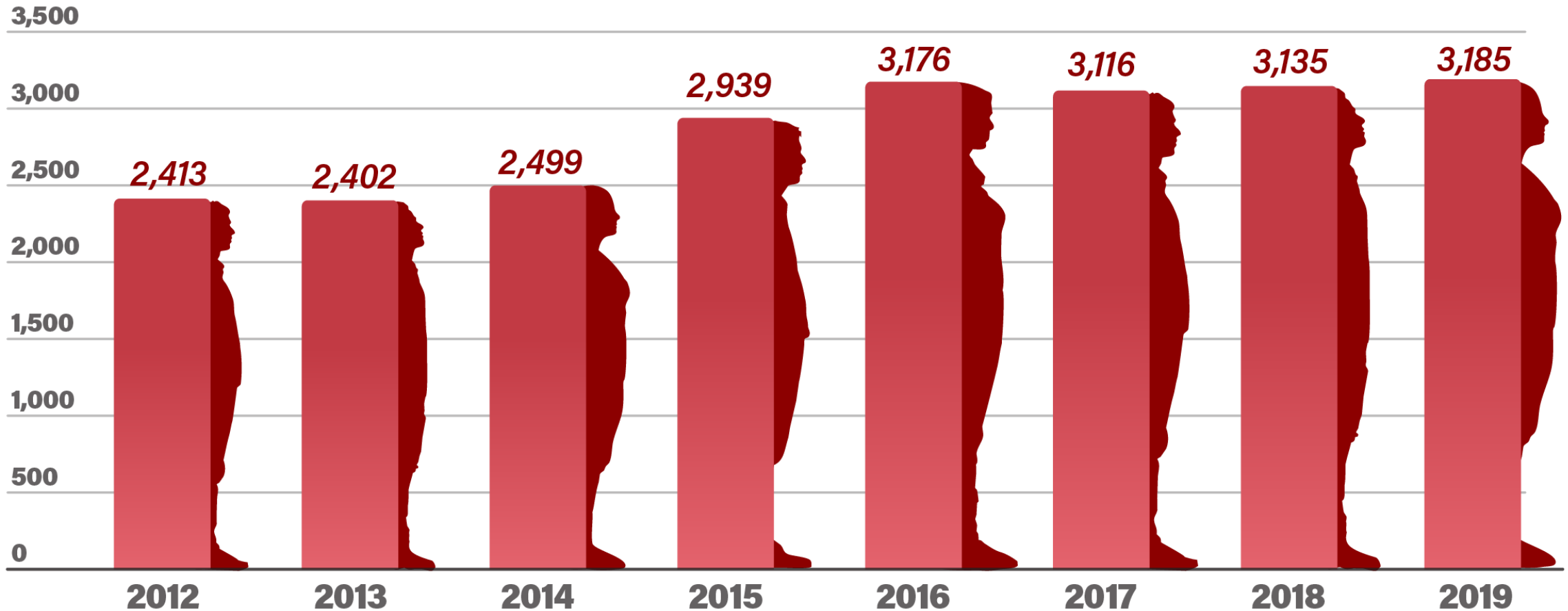
EMERGING

FDOT Safety Coalitions



Florida's Roadway Fatalities

ROADWAY FATALITIES



Looking Ahead



How to Comment

- Comment or ask in the question & answer chat box
- Go to www.floridatransportationplan.com and
 - Visit the FTP Virtual Room and provide comments
 - Read the FTP Policy Element document and complete the comment form
 - Look for an email in a few weeks with a link to the SHSP. Until then, comment at <https://www.surveymonkey.com/r/SHSPSurvey>