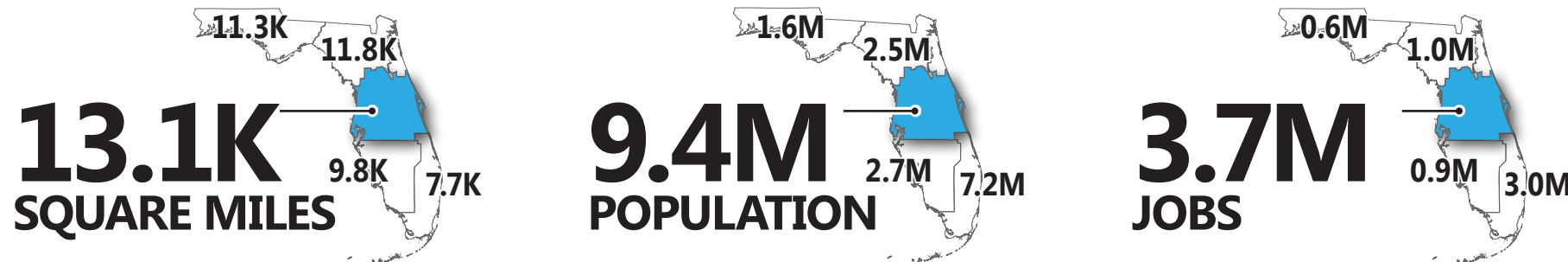


# CENTRAL FLORIDA

## TRANSPORTATION TRENDS & CONDITIONS

Nestled in the heart of Florida between the Gulf Coast and the Atlantic Ocean, Central Florida encompasses a tapestry of natural ecosystems, extensive urban development, and thriving recreational attractions. With nearly twice the roadway mileage compared to other Florida regions, this megaregion is projected to sustain its rapid growth trajectory, accompanied by ongoing shifts in its demographic composition and age distribution. The area's existing high-density population, increasing number of new residents, and more than 100 million annual visitors significantly impact congestion and multimodal safety. To address these issues and maintain economic competitiveness, Central Florida communities are thoughtfully integrating land use and transportation decisions. These communities are developing strategic plans and programs that strengthen interregional connectivity and expand access for all users, while integrating emerging transportation technologies into their solutions. In particular, Central Florida has positioned itself as a leader in aviation innovation, driving the state's progress in advanced air mobility and continuing to be a global hub for the space industry.



[Statewide Transportation Trends & Conditions]

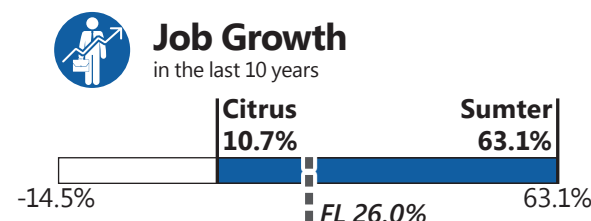
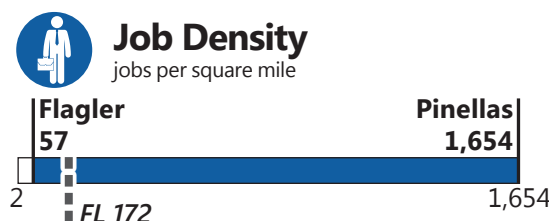
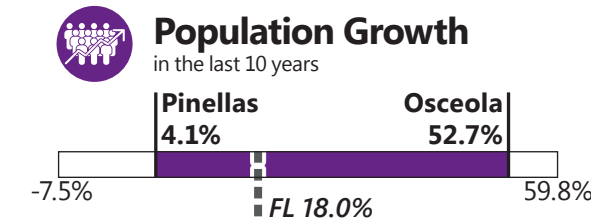
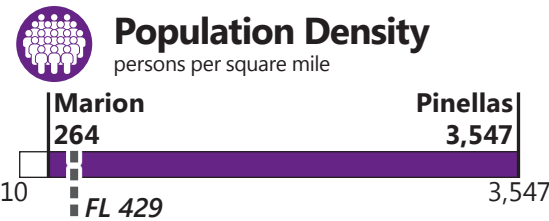
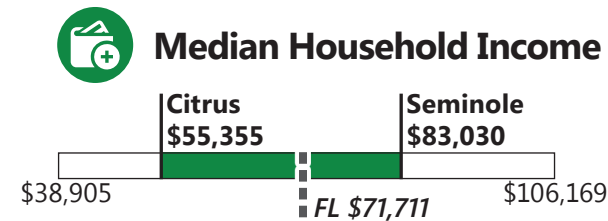
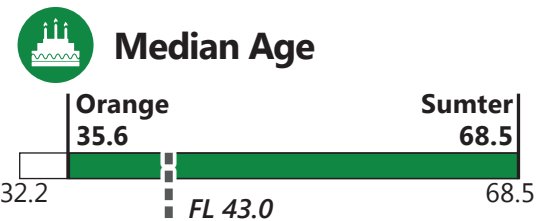
### TRANSPORTATION SYSTEM HIGHLIGHTS

- 45,051** Public Road Miles
- 880** Rail Mainline Miles
- 665** Existing SUN Trail Miles
- 4,137** Highway Bridges
- 15** Transit Systems
- 7** Commercial Service Airports
- 4** Seaports
- 10** Military Installations
- 2** Spaceports Territories

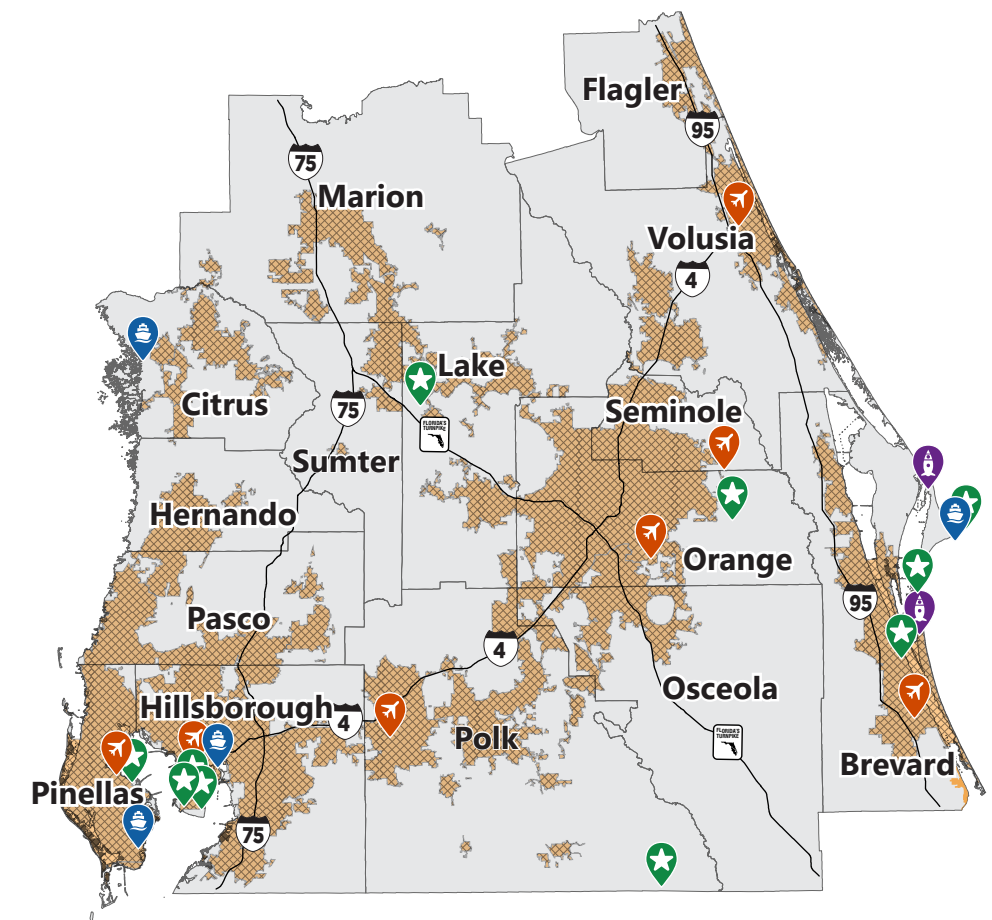
[Florida Transportation Fast Facts]

### DEMOGRAPHIC CHARACTERISTICS

Reference scale bars represent the statewide range, highlighting the region's highest and lowest values.



[Florida Trends & Conditions]



- Urban Area
  - Airport
  - Seaport
  - Military Installation
  - Spaceport
  - Roadways
- Florida (FL) Median

[Sources]

**CENTRAL FLORIDA'S RAPID GROWTH CONTINUES**

2.7 million new residents  
2.7 million new jobs  
by 2050



**From Citrus Farms to Urban Centers:** In the early to mid-19th century, Central Florida was primarily characterized by citrus farms and small settlements, initially relying on river routes and railroads. The 20th century ushered in significant development, driven by the completion of I-4, the establishment of cities and activity centers, the opening of several commercial airports, and substantial advancements in technology and aerospace industries. Orlando and Tampa continued to have rapid expansion and suburbanization through the early 21st century amid record population growth.



**Exurban Growth:** Looking forward to 2050, large population increases are projected in Pasco, Polk, Lake, Sumter, Flagler, and Osceola Counties, propelled by the rising cost of living in urban areas and rural lands around the urban fringe.



**Rural Area Industries & Freight Activity:** Expansion into rural and suburban areas is fueling industrial and freight growth across Central Florida. Amazon is accelerating this trend, adding a 2.8 million-square foot fulfillment center in Daytona Beach (projected to have 1,000+ jobs by 2028) and investing more than \$400 million in Brevard County since 2020. These investments strengthen freight connectivity along key corridors and support regional economic growth.



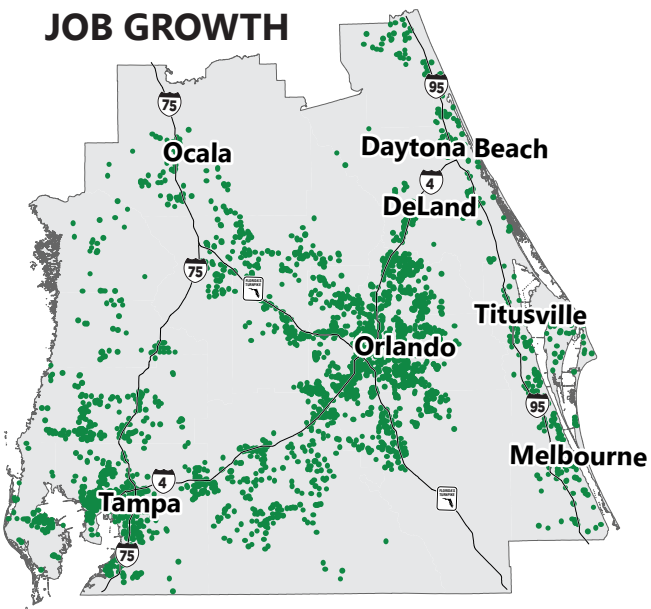
Among Citrus, Hernando, Hillsborough, Pasco, and Pinellas Counties, **warehousing and distribution make up almost 60% of the freight land use** and more than 70% of freight movement relying on commercial trucks.

Ocala's rapid population growth made it the **fastest growing metro area** in the nation from 2024 to 2025.

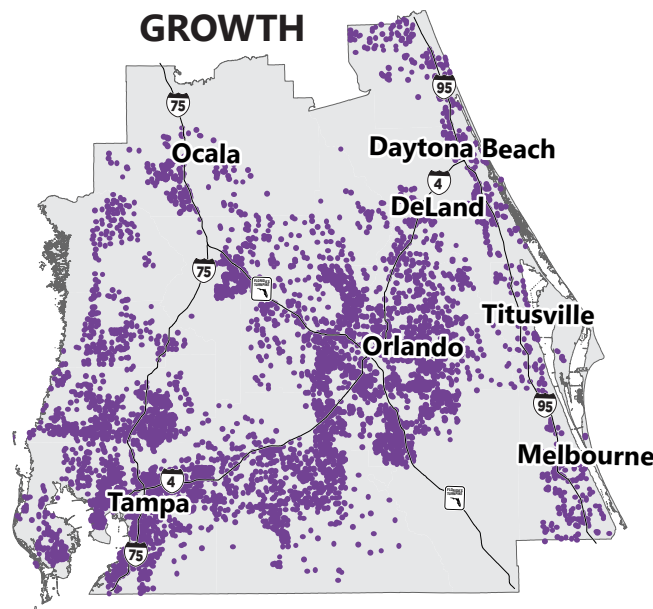


Central Florida boasts world-renowned theme parks and beautiful natural landscapes, including lakes, springs, and beaches, drawing more than **100 million visitors** every year.

**30-YEAR JOB GROWTH**



**30-YEAR RESIDENTIAL GROWTH**



**LEVERAGING ADVANCED TECHNOLOGY SOLUTIONS**

93 launches in 2024  
109 launches in 2025

As Central Florida continues to welcome more residents, businesses, and visitors, the region has a unique opportunity to embrace innovative transportation solutions in shaping a smarter, more efficient, and safer mobility future.



The **I-4 Florida Regional Advanced Mobility Elements (FRAME)** and the **I-75 FRAME** projects are regional integrated corridor management projects. The I-4 FRAME project covers 77 miles of I-4, 122 miles of other limited-access routes, and 491 traffic signals. The I-75 FRAME project aims to facilitate better east-west movement between I-75 and US-301/441 corridors in Central Florida. Both projects leverage new technologies to improve safety and alleviate congestion, including Connected Vehicles, Automated Traffic Signal Performance Measures, transit signal priority, pedestrian safety elements, and fiber optic communications.



**SunTrax**, a 475-acre FDOT test facility dedicated to the research and testing of emerging transportation technologies, opened in 2023. It includes a 2.25-mile multi-lane track, which is the only high-speed autonomous vehicle testing facility in the Southeastern U.S. In 2025, **SunTrax was designated as the state's headquarters for Advanced Air Mobility (AAM).**



The Orlando and Tampa airports are exploring how to integrate **electric vertical takeoff and landing (eVTOL)** aircrafts for regional air mobility services and to support the state's **AAM** efforts.



Recognized as the 2025 East Central Florida Diamond Awards winner, the newly implemented District 5 **Digital Analytics Notification for Incident and Event Localization (DANIEL)** system leverages advanced computer vision technology to monitor over 1,000 traffic cameras. This enables operators at the District's Regional Transportation Management Center to detect incidents more quickly, resulting in faster response and clearance times, reduced congestion, and a lower risk of secondary crashes.



# MOVING PEOPLE AND GOODS FOR A MEGAREGION

## TRAVELING ON LAND

In 2024, Central Florida residents and visitors traveled over 143 million vehicle miles daily on state roadways and took over 49 million transit passenger trips. With dense urban centers and a growing population, Central Florida has been experiencing safety challenges as roadways get busier. Agencies across the region continue to prioritize transportation safety, adopting and implementing significant safety policies and projects.

Central Florida's roads carry over 37% of the state's total truck traffic. Despite having 60% of truck parking hotspots in Florida, the region has only 20% of the state's total truck parking spaces. FDOT and its partners are advancing truck parking solutions along I-4, I-75, and I-95. Over 900 truck parking spaces will be added along I-4, and a new 40-acre, 120-space truck parking facility is under construction near the Hillsborough-Polk County Line, with an expected opening in 2026. An additional 132-space truck parking lot in Seminole County is currently under design, with construction anticipated in 2026.



Source: Hillsborough TPO



**30%**  
of fatal crashes in Central Florida involved a pedestrian or bicyclist in 2024.

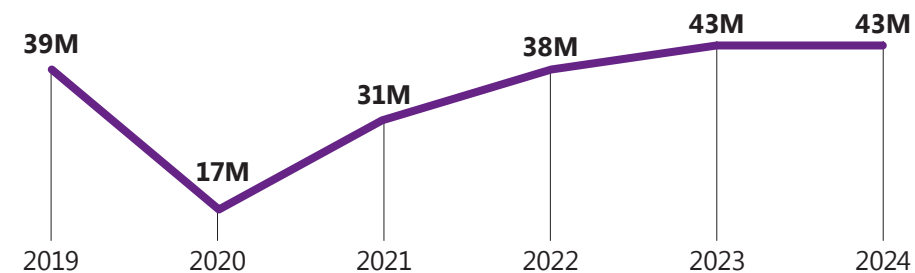


There are **more than 1,100** bikeshare bikes and e-scooters in Central Florida

## TRAVELING BY AIR

In 2024, Central Florida recorded 43.3 million passenger enplanements and over 470,000 tons of air cargo. Orlando International Airport and Tampa International Airport together account for 92% of aviation enplanement and 70% of air cargo in the region. Collectively, they also represent 37% of Florida's total aviation enplanements and 9% of total air cargo volume, highlighting their significance as transportation hubs both regionally and statewide.

Central Florida Enplanements from 2019 to 2024



Florida's busiest airport, **Orlando International Airport**, had over **28 million enplanements** in 2024. Following the opening of its new Terminal C, the airport looks forward to its next improvements, including a **\$2.2 billion consolidated rental car facility** and **\$235 million** in improvements for Terminals A and B.



Source: Orlando Airport

## TRAVELING OVER SEA

Central Florida is home to two major ports in Tampa Bay and Cape Canaveral, which capture a large share of the state's cruise activity. These ports have reinforced the area's tie with both coasts, bolstering Florida's tourism and trade activities with other continents.

**Port Canaveral is Investing \$500M** to accommodate the world's largest cruise ships that can hold **5,600 passengers**.



Source: FDOT



**Port Tampa Bay**  
**1.7M** Passengers  
**51M** Tons of Cargo Annually by 2030

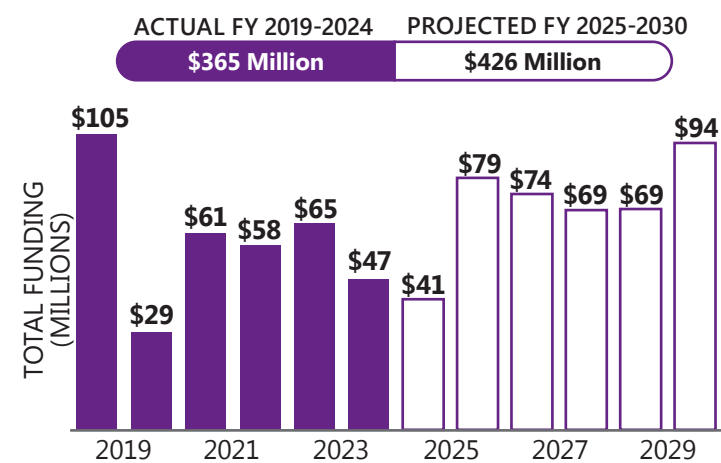


**Port Canaveral**  
**9M** Passengers  
**30M** Tons of Cargo Annually by 2048

## TRAVELING TO SPACE

FDOT and its partners continue their commitment to grow the country's space travel.

Spaceport Investments (Millions)



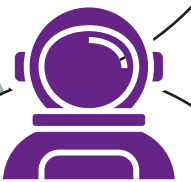
2025 Cape Canaveral Spaceport Activities

**109** Launches | **3.0M** Pounds to Orbit | **2,146** Payloads

The second of two new **NASA Causeway bridges** was completed in March 2025, six months ahead of schedule. The taller and wider bridges support the increasing spaceport-bound payloads and number of vehicles and eliminates the need for drawbridge openings.



Source: FDOT



In FY 2023, Florida's NASA activities generated **35,000+ Florida jobs** and **\$8.2 billion** in economic output.

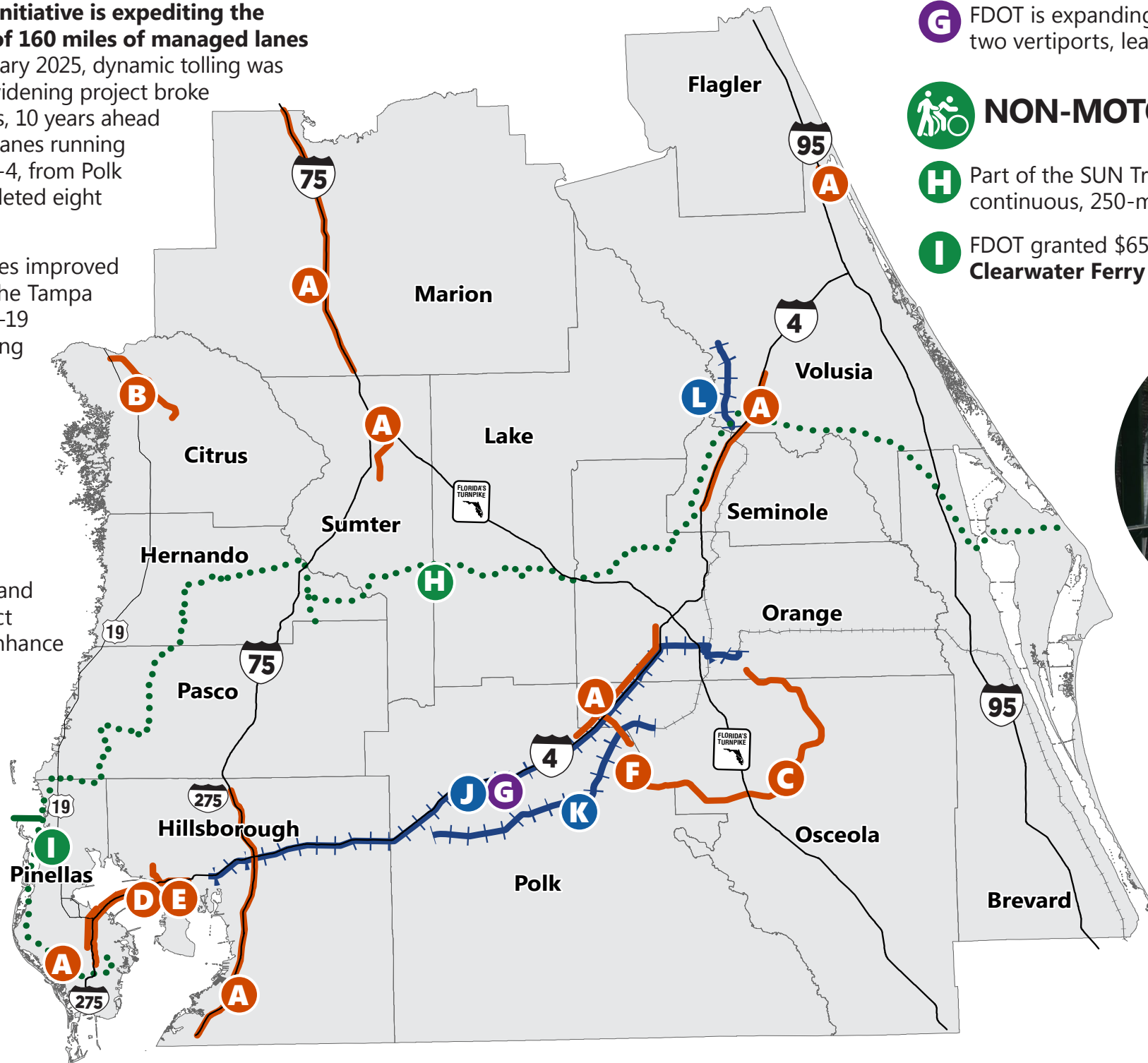
## ENHANCING INTERREGIONAL & INTERMODAL CONNECTIVITY

Local agencies continue to heavily invest in interregional and intermodal infrastructure—comprehensive transit connections, extensive trail systems, arterial and local streets, and robust highway express lanes—to more seamlessly link the major metro areas of Orlando and Tampa.



### HIGHWAY

- A** The **Moving Florida Forward (MFF)** initiative is expediting the design and construction processes of 160 miles of managed lanes along I-4, I-75, I-95, and I-275. In February 2025, dynamic tolling was introduced on I-4, and a 31-mile I-75 widening project broke ground in Sumter and Marion Counties, 10 years ahead of schedule. In April, congestion relief lanes running through one of the busiest section of I-4, from Polk County to Osceola County, were completed eight months early.
- B** **Suncoast Parkway Extension** provides improved mobility between Citrus County and the Tampa Bay area. It offers an alternative to US-19 for the north-south trip while enhancing the hurricane evacuation route.
- C** **50 miles of new expressways** will be added to address rapid growth, per the Central Florida Expressway Authority's future vision.
- D** The \$865-million **Howard Frankland Bridge** project is nearing completion, with the new southbound span open and northbound traffic shifted. The project includes a shared-use path that will enhance multimodal access and travel.
- E** Several sections of the **Selmon Greenway** will be enhanced with safety improvements, as well as upgrades to lighting, landscaping, and wayfinding signage.
- F** The 3-mile **Poinciana Parkway Extension** and the 4-mile **Poinciana Connector** are being advanced by the Central Florida Expressway and Florida's Turnpike Enterprise, respectively, to improve traffic flow and regional connectivity in the area.



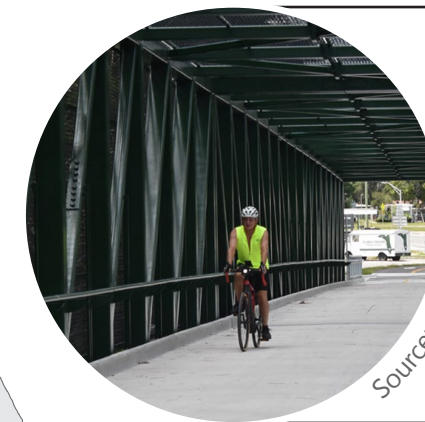
### ADVANCED AIR MOBILITY

- G** FDOT is expanding the **SunTrax** testing facility to include two vertiports, leading the nation in AAM research.



### NON-MOTORIZED MODES

- H** Part of the SUN Trail network, the **Florida Coast-to-Coast Trail** will provide a continuous, 250-mile trail between the Gulf of Mexico and the Atlantic Ocean.
- I** FDOT granted \$655,000 to Pinellas Suncoast Transit Agency to expand the **Clearwater Ferry Service**, providing another option for residents and visitors.



Source: FDOT

The **SUN Trail** program has advanced several Central Florida projects to completion in 2024, including:

- Good Neighbor Trail, Downtown Brooksville.
- Palmetto Avenue Trail, Daytona Beach and South Daytona Beach.



### TRANSIT

- J** A \$15.9 million federal grant was received by **Brightline** for service design from Orlando to Tampa.
- K** **SunRail Extension to Lakeland**, is forecasted to add 315,000 in ridership to the SunRail system. Phase One of the extension to Haines City has advanced to the project development and environmental study stage.
- L** **SunRail was extended 12 miles** to the DeLand station in August 2024, connecting the commuter rail to the DeLand Amtrak Station and adding 5,000 more riders monthly.