

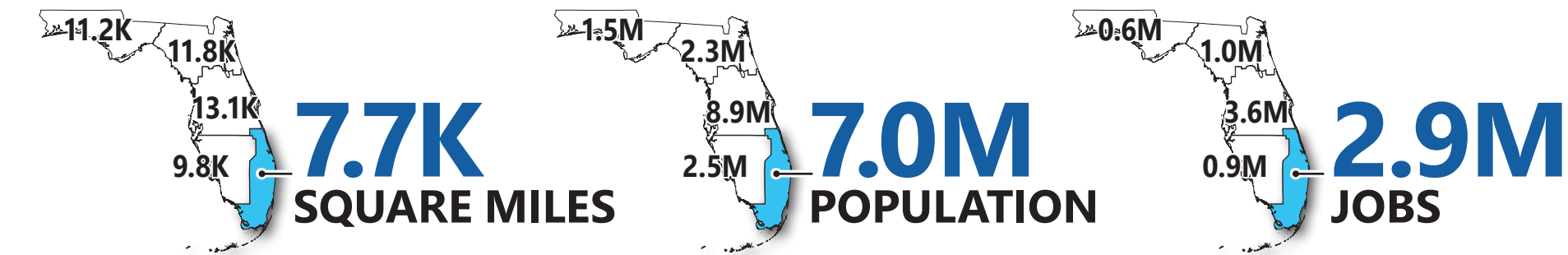


# SOUTHEAST FLORIDA

## TRANSPORTATION TRENDS & CONDITIONS

Systems Forecasting  
& Trends Office  
FDOT

Nestled between the Atlantic Coast and the Everglades, Southeast Florida's constrained footprint serves the state's largest metropolitan areas, with high concentrations of population and job centers. Southeast communities stand out for their diverse transportation modes, with a large portion of residents relying on walking, bicycling, transit, or shared mobility, albeit facing safety challenges for vulnerable road users. Emergency evacuation remains a critical concern due to the area's geographic limitation, necessitating a focus on resilient transportation infrastructure that can withstand weather and coastal flooding. Looking ahead, community partners have a collective commitment to proactively implement strategies to effectively manage forecasted population growth by emphasizing urban development patterns, making substantial multimodal infrastructure investments, and conducting resiliency-focused management of transportation assets.



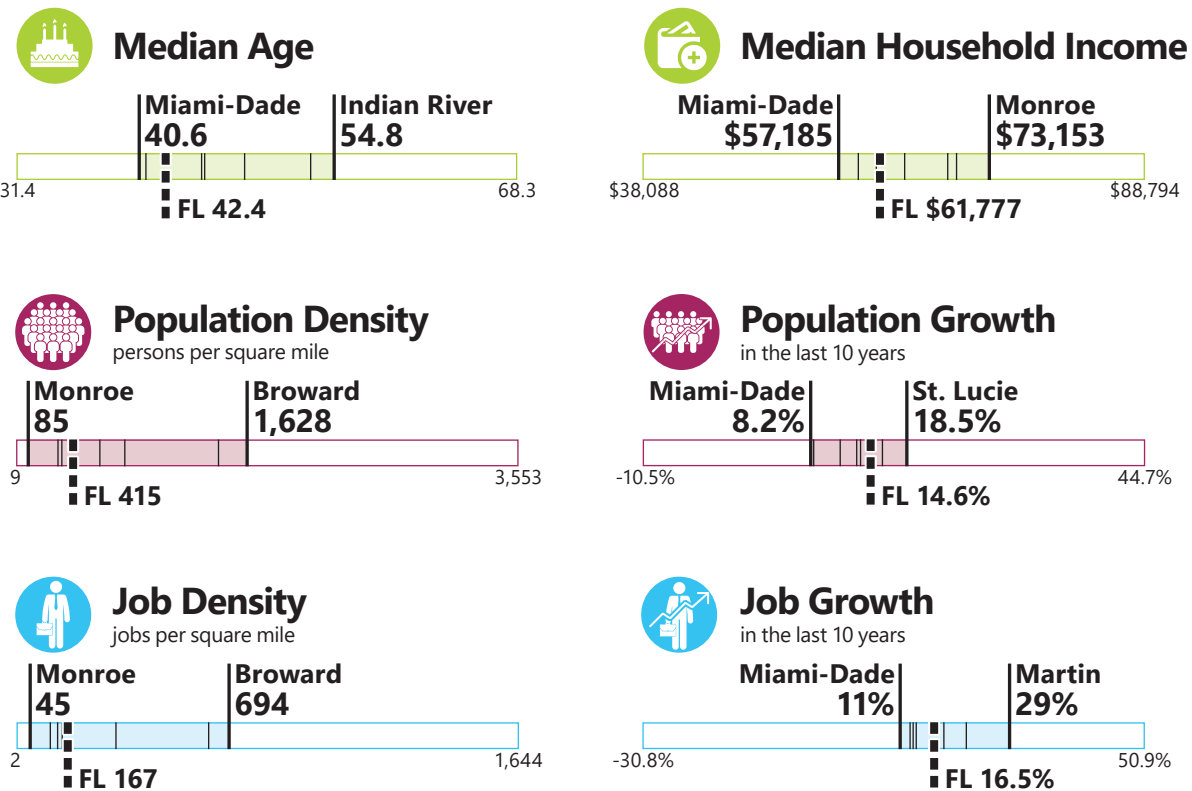
[Statewide Transportation Trends & Conditions]

### TRANSPORTATION SYSTEM HIGHLIGHTS

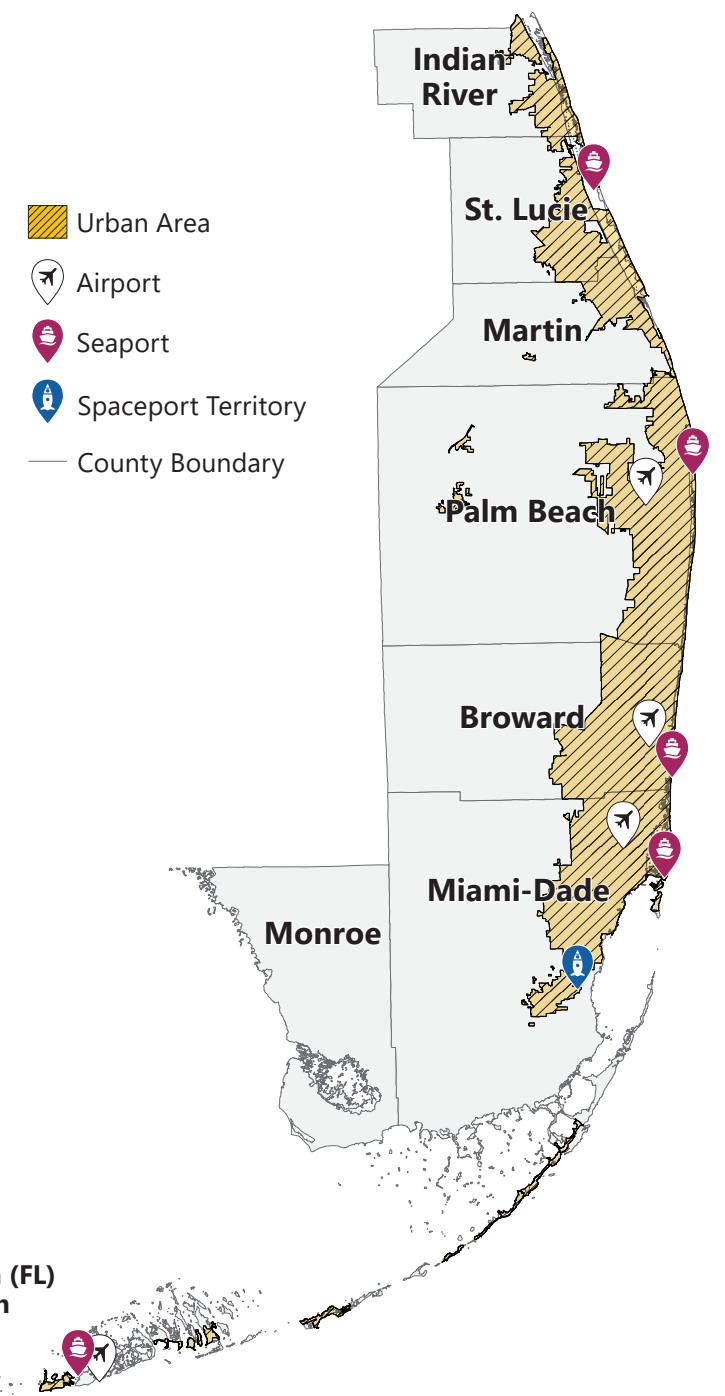
- 20,708** Public Road Miles
- 425** Rail Mainline Miles
- 312** Existing SUN Trail Miles
- 2,886** Highway Bridges
- 8** Transit Systems
- 4** Commercial Service Airports
- 5** Seaports
- 1** Spaceport Territory

### DEMOGRAPHIC CHARACTERISTICS

Reference scale bars reflect the range of values for each demographic characteristic across the state. Lines within shaded areas reflect values for Southeast communities.



[Florida Trends & Conditions - Southeast Communities Storymap]



Florida (FL)  
Median

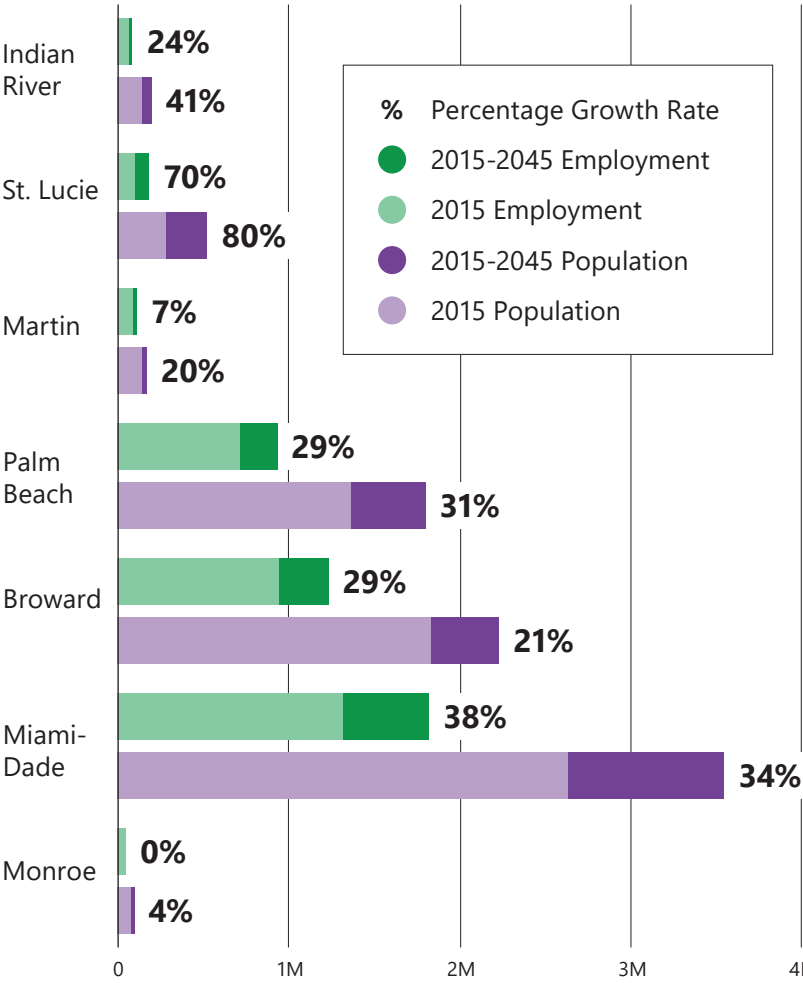
FAST GROWTH:  
PAST & FUTURE

2 million new residents  
1.1 million new jobs  
by 2045

Spanning over 200 miles long and comprised of over 100 municipalities, Southeast Florida has a rich history and multiethnic culture. Its early development was spurred by Florida’s railroad expansion and favorable climate. Later real estate booms were brought about by the advent of air conditioning, domestic and international immigration, and tourist attractions. These factors make the area unique and also drive the needs and priorities for transportation.

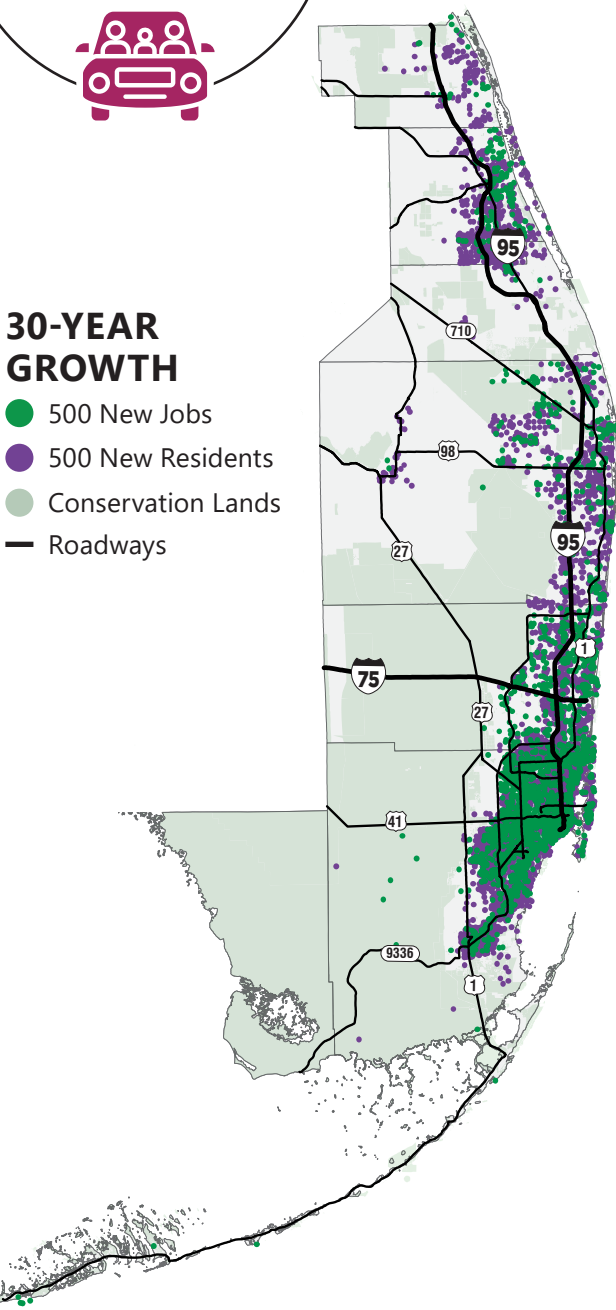
By 2045, expansive growth throughout the Southeast is anticipated, with urbanized areas densifying while the lower-intensity outskirts develop with migration.

EMPLOYMENT & POPULATION GROWTH



30-YEAR  
GROWTH

- 500 New Jobs
- 500 New Residents
- Conservation Lands
- Roadways



Carpooling remains the **2nd-most-common means of commuting**, in the Southeast.



More than **50%** of Miami-Dade County’s population was **born outside the U.S.**



GROWTH THROUGH  
THOUGHTFUL DEVELOPMENT

High-paced growth coupled with environmental sensitivity will necessitate the efficient use of Southeast Florida’s limited developable land. Growth will be in the form of walkable, mixed-use, and transit-oriented central core areas. This vision is crystallized in the Seven50 Prosperity Plan, a plan developed by the Treasure Coast and South Florida Regional Planning Councils in partnership with FDOT.

- In **Palm Beach County**, significant industrial uses along Beeline Highway and SR 80 are expected while low-density corridors also have redevelopment potential as denser areas with mixed-use nodes and diverse housing options.
- In **Martin County**, areas of low-income households underscore the need to increase access to more and higher-wage jobs.
- Broward County’s** 2045 Broward Next Plan allocates \$1.4 billion on transit projects and emphasizes development around transit hubs.

The **Seven50** Plan calls for **190 square miles of protected farmland** in Indian River, St. Lucie, and Martin counties.



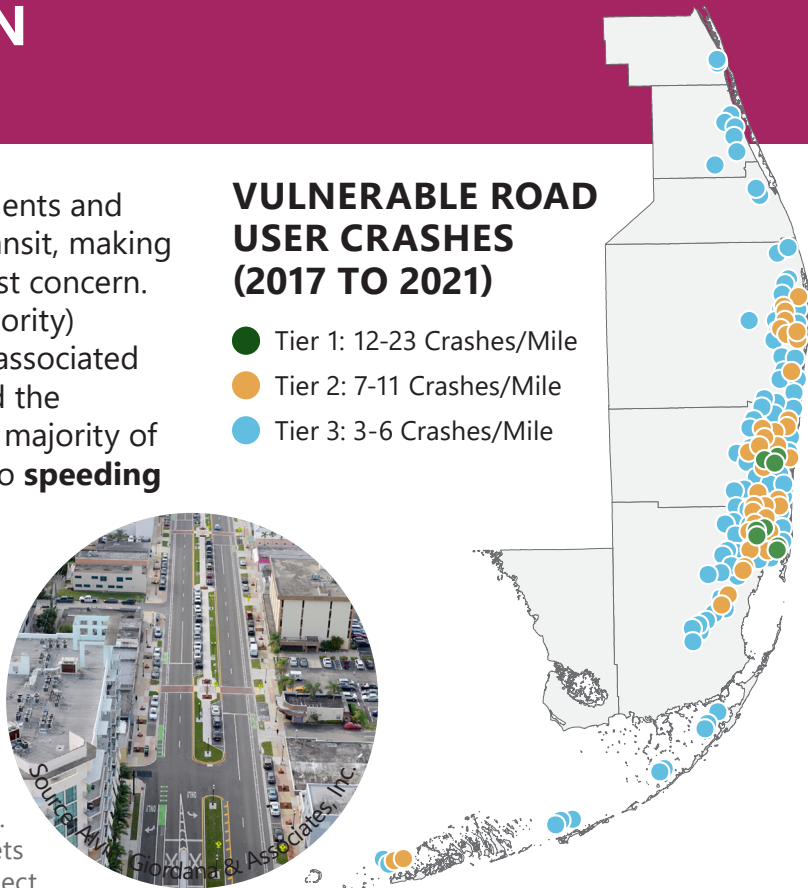
TARGETING PEDESTRIAN  
AND BICYCLIST SAFETY

The Southeast has a significant share of residents and workers who rely on walking, bicycling, or transit, making safety for vulnerable roadway users an utmost concern. **Seven out of the states’ 22 Tier 1** (high-priority) segments of fatal and serious injury crashes associated with vulnerable users are in Miami Beach and the downtowns of Fort Lauderdale and Miami. A majority of the **root causes** of these crashes are linked to **speeding and lack of pedestrian accommodations**.

Palm Beach TPA, Broward MPO, and Miami Dade TPO have been actively partnering on the Southeast Florida Regional Transportation Plan that calls for pedestrian and bicycling safety as a focus and driver for project priorities.

VULNERABLE ROAD  
USER CRASHES  
(2017 TO 2021)

- Tier 1: 12-23 Crashes/Mile
- Tier 2: 7-11 Crashes/Mile
- Tier 3: 3-6 Crashes/Mile



FDOT D4  
Hollywood Blvd.  
Complete Streets  
Project



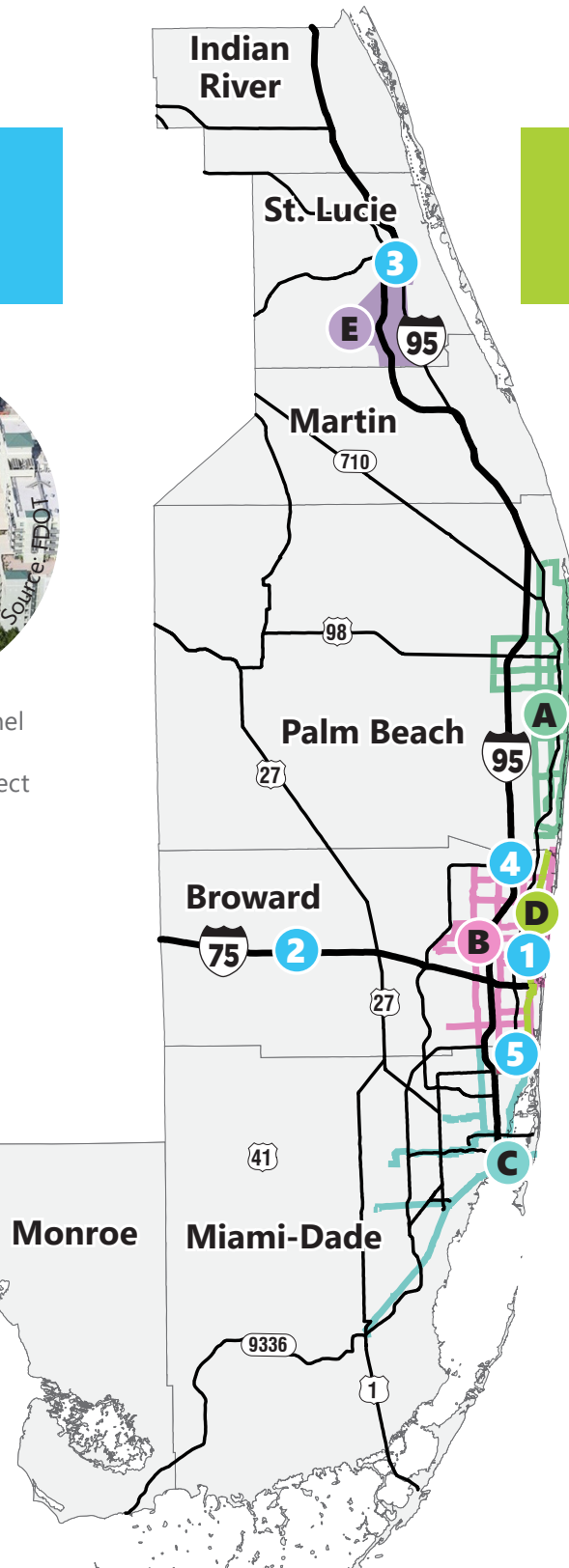


## KEY ROADWAY INFRASTRUCTURE INVESTMENTS

- 1** The **Henry E. Kinney Tunnel** project includes rehabilitating and extending the tunnel top to accommodate a plaza and improve intersection at Las Olas Avenue in Downtown Fort Lauderdale.
- 2** The **I-75 Rest Area** on Alligator Alley incorporates wildlife crossings and a newly designed environmental education center.
- 3** **West Midway Road** near Florida's Turnpike will be adding vehicular lanes, buffered bike lanes, and a shared-use path, as well as a new partial interchange with Florida's Turnpike.
- 4** The **SW 10th Street Connector** project includes two multimodal corridors in Deerfield Beach that connect the Sawgrass Expressway with I-95.
- 5** **I-95 at Golden Glades Interchange**, as part of the Moving Florida Forward initiatives, will provide new and improved freeway system to system connections to ease congestion when completed in 2028.
- 6** The **Long Key Bridge** is currently in a PD&E study to evaluate the replacement and will be in construction in 2027.
- 7** The **Seven Mile Bridge**, is being evaluated for potential replacement through a PD&E study included in FDOT's Work Program.



Henry E. Kinney Tunnel Improvements and Pedestrian Plaza Project



## TRANSIT-LED EVOLUTION

**87M** annual transit trips in the Southeast during 2022

Southeast Florida stands out for its unparalleled integration of transit systems that complement its roadways, trails, railroads, and waterways. The Southeast communities continue to plan and invest in a **future centered on world-class transit systems**.

- A** **Palm Beach TPA's 561 Plan** prioritizes 11 enhanced transit corridors, projected to serve more than two-thirds of the county's population and 94 percent of its non-farm jobs.
- B** **Broward's Premium Mobility Plan** calls for \$4.3 billion investments in over 200 miles of commuter rail, light rail, bus rapid transit, and high-frequency bus.
- C** **Miami-Dade TPO's SMART Program** will advance six rapid transit corridors, increasing connectivity for more than 75 percent of the county's residents. The 13.5-mile Northeast Corridor proposed along the Florida East Coast Railway (FEC) is envisioned to connect to Metromover, Metrorail, TriRail, and Brightline.
- D** **FDOT and Broward County Transit** are leading the **Broward Commuter South Rail** project, connecting to the Northeast Corridor in Miami-Dade. This 11.5 mile rail corridor will connect Aventura to southern Fort Lauderdale.
- E** **St. Lucie County** launched the new **Area Regional Transit On-Demand** public transportation service.
- F** **Communities in the Keys** are partnering with mainland transit providers to provide fixed-route, on-demand, and micromobility transit services that reduce congestion, support emergency evacuation, and connect residents to tourism and service jobs.



**Tri-Rail** began service to Downtown Miami in January 2024. It served almost 4 million trips in fiscal year 2023.

FDOT partnered with **Brightline** to implement \$45 million safety improvements at rail crossings.




**Connecting to Transit at Trip Ends:** Completed in 2023, the Miramar Park and Ride Lot addresses the growing demand for I-95 Express Coach, which connects residents to job centers across Broward and Miami Dade counties.





**Connecting Rural Residents to Jobs:** Palm Tran Go Glades is an on-demand dial-a-ride service for workers commuting to work from Belle Glade, Pahokee, and South Bay.

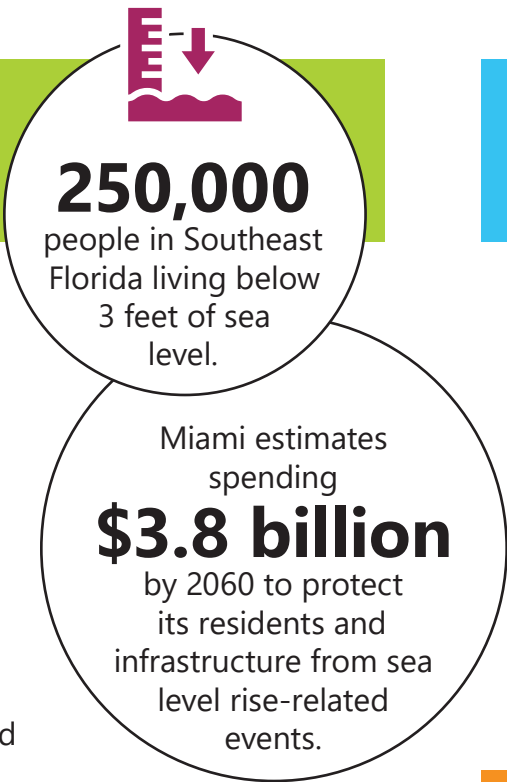
NAVIGATING  
ENVIRONMENTAL RISKS

Communities in the Southeast are aware of their vulnerability to hurricanes and coastal flooding and, as such, are implementing short- and long-term measures to remain resilient.


 The **Seven50 Plan** recognizes at-risk natural resources and promotes adaptive infrastructure planning. A key action is to have a balanced approach to mobility that centers on a world-class multimodal transportation system.


 The **South Florida Climate Change Vulnerability Assessment & Adaptation Pilot Project** recommended process and policy changes for regionally significant transportation facilities, rehabilitation and new facilities, and operations and maintenance of facilities in high-risk areas.


 The **Everglades Restoration Plan** is the largest South Florida restoration program underway and being advanced through a Federal-State partnership to restore, protect, and preserve the Indian River Lagoon, Biscayne Bay, and other regional water resources.

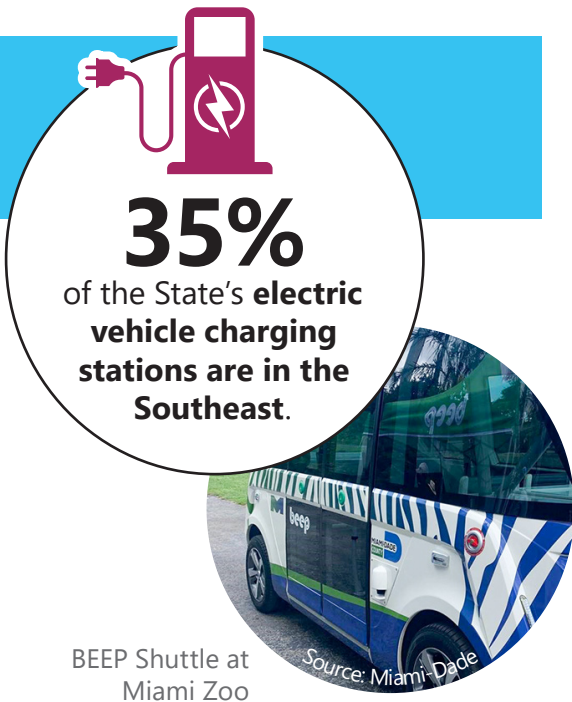


THE FUTURE OF THE  
SOUTHEAST IS HIGH TECH

 **Broward County's** Long-Range Transportation Plan includes a "comprehensive technology" scenario that incorporates connected and automated vehicles and mobility on demand.

 **Miami-Dade County** plans to deploy innovative technologies, such as Bus Express Rapid Transit, rideshare services, scooters, and mobile applications, to increase mobility and connectivity. The county also piloted a low-speed, automated vehicle shuttle within Zoo Miami.

 **Miami-Dade TPO** plans to have an Advanced Air Mobility network implemented by 2033.

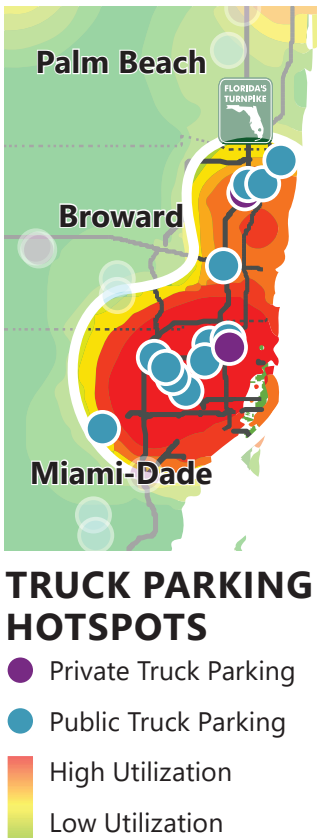


NATIONAL LEADER IN  
TRADE & TOURISM

The Southeast leads the state and the country in tourism and trade activities with its seaports and airports serving as gateways for passenger cruises and air travelers.

- **35 percent of all waterborne freight** shipped to and from Florida go through the Southeast seaports. Southeast's airports process **77 percent of the state's air cargo**.
- Miami and Fort Lauderdale/Hollywood International Airports had a total of 39.3 million passenger boarding in 2022, the state's **second- and third-highest annual enplanements**.

The heavy freight volume along Southeast roadways has resulted in it having the state's highest truck dwell time. The Southeast communities log **10 million truck miles** daily but only has **2,000 truck parking spaces**. FDOT is exploring new truck parking opportunities along the Turnpike and at the I-95 Golden Glades Travel Center.



Southeast Florida  
is the Country's

 **1st** International  
Air Cargo  
Tonnage &  
Cruise  
Passengers


 **3rd** International  
Visitors


 **5th** Air  
Passengers


 **6th** Waterborne  
Containers

 **8th** Value of  
Exports

EMERGENCY RESPONSE  
TO HELP COMMUNITIES

 The Southeast communities are strengthening **roadways that connect the barrier islands** to the mainland so they can withstand storm surge and weather events.

 FDOT completed an emergency fix, including dune restoration, restriping, and adding metal sheet pilings, for **State Road A1A** in Fort Lauderdale after it was damaged by Hurricane Sandy's swells and high tides.

 FDOT proactively partners with local agencies to help reduce flood waters, manage roadway closures and traffic diversions, and support long-term recovery during **weather events** such as the April 2023 record rainfall and flooding in Fort Lauderdale.



April 2023 record  
rain event resulted in  
flooding in the City of  
Fort Lauderdale