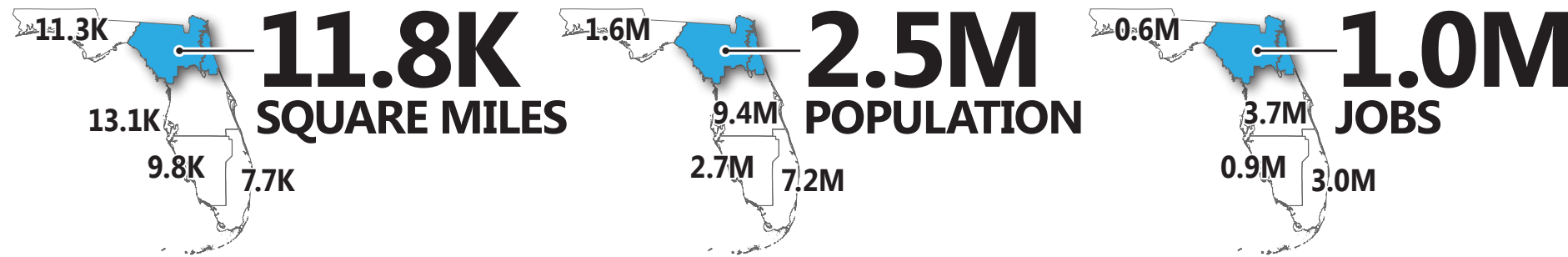


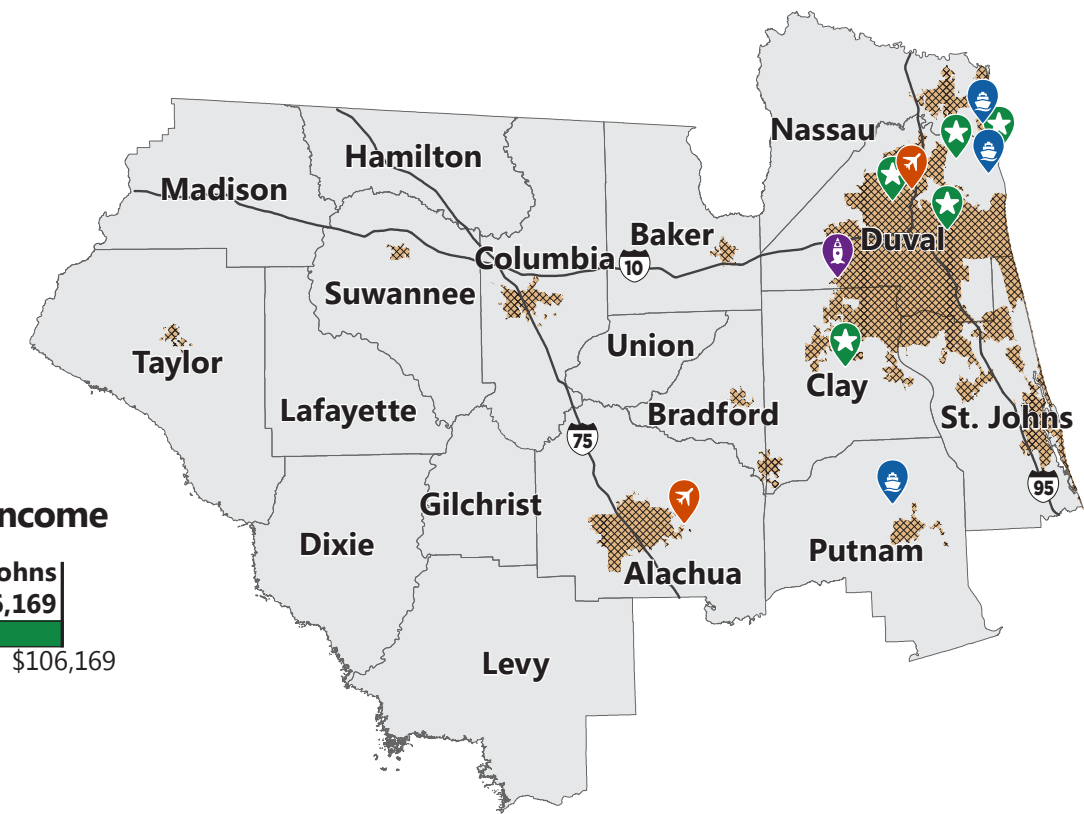
# NORTHEAST FLORIDA

## TRANSPORTATION TRENDS & CONDITIONS

The Northeast communities have a rich historical legacy along the St. Johns River, evolving over time into a thriving hub with varied economies, including logistics, health care, and military industries. The area is a crucial regional center and gateway of the state for access both on land and at sea. Recent emerging technology and multimodal infrastructure investments, such as river routes, smart streets, and bus rapid transit, reinforce the Northeast's dedication to accommodating viable growth and multimodal connectivity. With a relatively younger demography and more rural areas, Northeast Florida will continue to grow at a steady pace around existing urban centers, with targeted investments for transit, advanced technology, prioritization of environmental assets, and enhanced amenities for outdoor activities.



[Statewide Transportation Trends & Conditions]



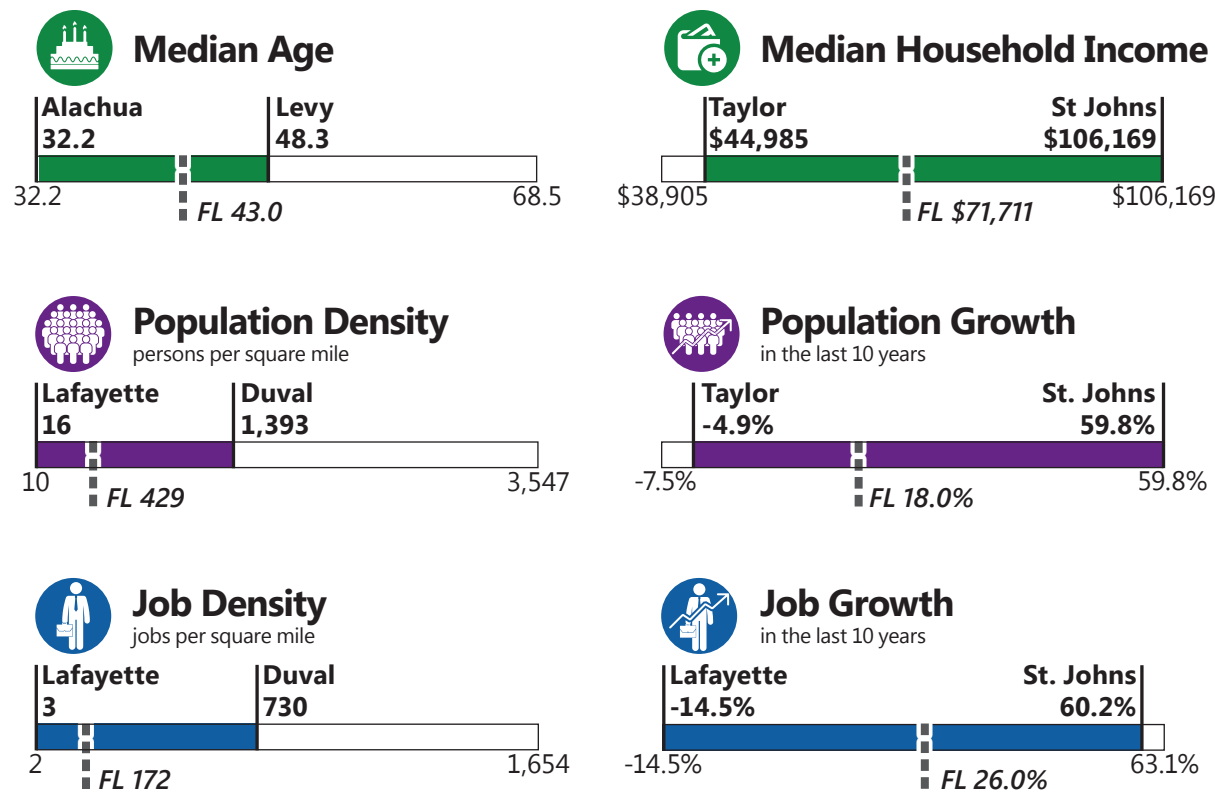
### TRANSPORTATION SYSTEM HIGHLIGHTS

- 22,313** Public Road Miles
- 676** Rail Mainline Miles
- 260** Existing SUN Trail Miles
- 2,101** Highway Bridges
- 8** Transit Systems
- 2** Commercial Service Airports
- 3** Seaports
- 5** Military Installations
- 1** Spaceport

[Florida Transportation Fast Facts]

### DEMOGRAPHIC CHARACTERISTICS

Reference scale bars represent the statewide range, highlighting the region's highest and lowest values.



[Florida Trends & Conditions]

- Urban Area
- Airport
- Seaport
- Military Installation
- Spaceport
- Roadways

Florida (FL) Median

**MULTIFACETED REGION WITH DISTINCT URBAN CENTERS**

644,575 new residents  
727,075 new jobs  
by 2050

Northeast's historical communities grew along the fertile banks of the St. Johns River, and its socioeconomic landscape was later shaped by agriculture and the building of railroads. Most recently, the area's economy has been driven by its ports and military bases. Today, the Northeast is complex in its geography, demography, and infrastructure.

- Destinations like Amelia Island and Ponte Vedra Beach are popular locations for water sports and golf, anchoring the area's **tourism industry** and complementing its **cultural attractions**.
- Northeast's **1 million jobs** encompass more than traditional industries, and include finance, health care, and technology. Its bio-science and cancer research hub includes the Mayo Clinic and University of Florida Health.
- In the next 30 years, St. Johns and Duval Counties will have significant population increases, **growing more than two times faster** than the other 16 counties in the area. However, **14 out of 18 counties in the Northeast** have a higher percentage of people **living below the poverty level** compared to the state.

**TOP 3 EMPLOYMENT**



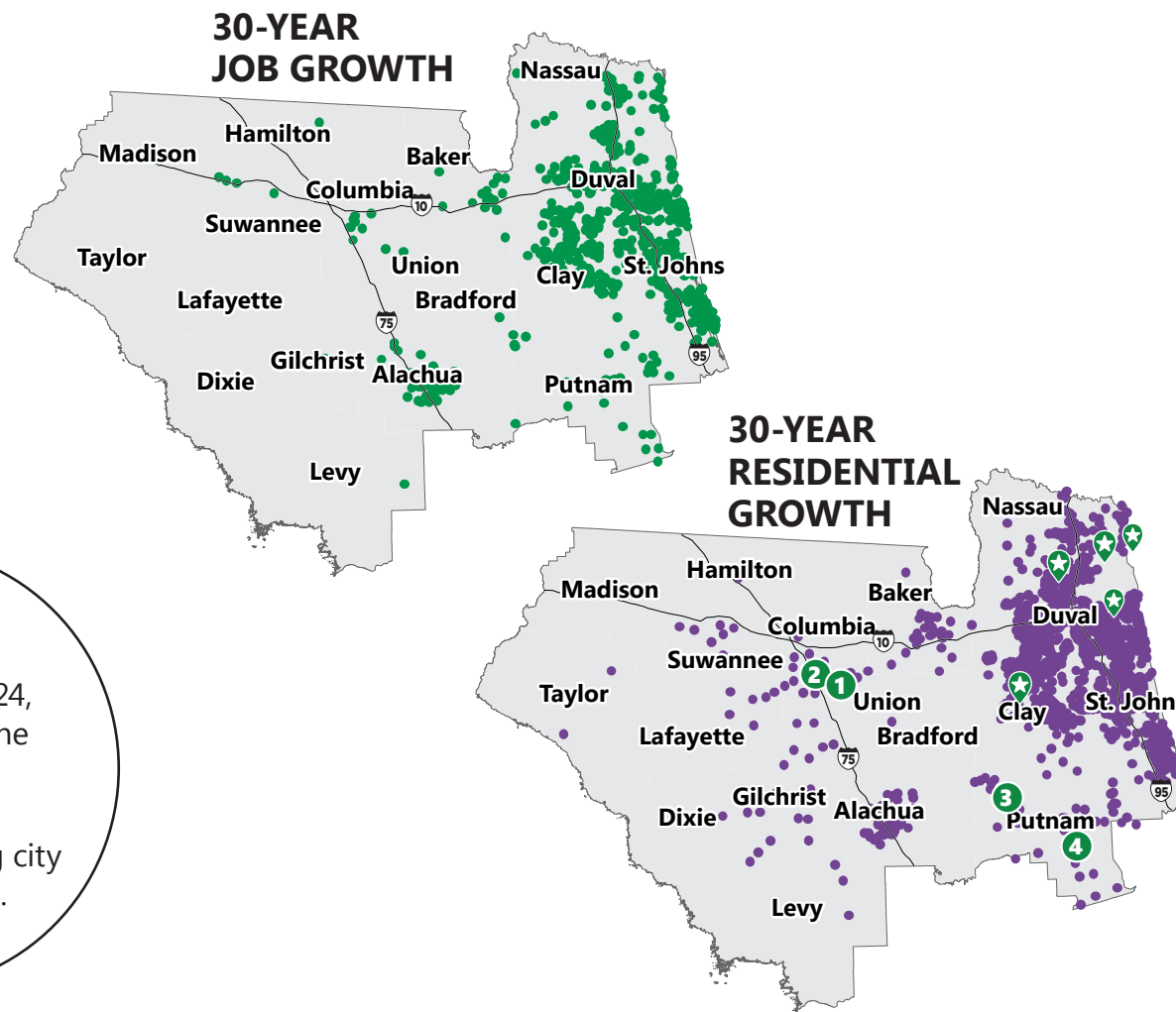
From 2018 to 2024, Gainesville was the **9th** fastest-growing big city among 305 U.S. metro areas.

Northeast communities are made up of **11% urban areas** & **89% rural areas**

**ENHANCING NORTHEAST'S RURAL ASSETS**

**89%** of Northeast Florida is rural

Even with modest population growth in the rural areas, addressing their transportation needs is a priority. The **Rural Infrastructure Fund** (RIF) program awarded over \$9.7 million of the total \$17 million FY 2025-2026 funds to Northeast communities to support infrastructure projects that can spur economic development and expand job opportunities.



- 1 City of Lake City (\$1,788,415):** to replace a hangar at the Lake City Gateway Airport significantly damaged by Hurricane Idalia.
  - 2 Columbia County Board of County Commissioners (\$2,000,000):** to construct an inbound and outbound rail track serving the North Florida Mega Industrial Park.
  - 3 Keystone Heights Airport Authority (\$2,950,450):** to construct a runway extension to Runway 2.
  - 4 Putnam County Board of County Commissioners (\$3,000,000):** to construct and commission critical public infrastructure at the Central Landfill in Putnam County.
- Military Installation

**COMMITMENT TO TRANSPORTATION SAFETY**

The Northeast Florida Community Traffic Safety Team is providing tips to increase the safety of rural driving. Their "Buckle Up and Slow Down" campaign is focused on rural drivers and includes guidance for All Terrain Vehicle (ATV) operation.



FDOT was honored by the Southeastern Association of State Highway and Transportation Officials for pedestrian and bicyclist improvements along University Avenue (SR-26) in Gainesville. The \$2.7 million project enhances connectivity and creates a safer environment for all roadway users in the area north of the University of Florida.


## RECREATIONAL AMENITIES THAT SUPPORT COMMUNITIES


Northeast Florida will continue to invest in recreational amenities to celebrate its natural assets, support community livability and healthy living, encourage multimodal travel, and boost tourism.


Palatka to St. Augustine Trail segment of the River to Sea Loop



Source: Florida State Parks


 FDOT has planned 638 miles of **Shared Use Nonmotorized (SUN) Trail** segments, of which 30% has already been funded including portions of the Timucuan Trail in Duval County, the East Coast Greenway in Nassua County, the Palatka to St. Augustine Trail in St. Johns County.

 Targeted to start in early 2026, the **Timucuan Trail** will connect to the existing trails at the entrance to Huguenot Memorial Park on Heckscher Drive/State Road A1A and on the Fort George River Bridge. The trail will feature a 12-foot-wide paved trail adjacent to the east side of Heckscher Drive/State Road A1A.

 The **City of Jacksonville** released a web-based interactive map of bikeway and trails in 2024, covering most of Duval County. Over 898 miles of on-street and off-street facilities are included.

## TECHNOLOGY-DRIVEN SOLUTIONS

Northeast Florida is a hotbed of multimodal transportation technology pilot applications. Many of these initiatives are advanced in partnership with FDOT and other regional agencies and include:

 **Smart North Florida** is committed to collaborating among communities, coordinating on data transparency and sharing, and deploying smart technologies. Since its inception, it has piloted new technologies to accelerate infrastructure project deliveries.

 **SMART St. Augustine** has advanced the \$15.3 million citywide deployment of innovative technologies, such as broadband access, cell deployment, traffic and parking management and automation, and safety, surveillance and wayfinding systems, into the Design Phase. Implementation of these technologies is scheduled for Fall 2025.

**Jacksonville** boasts more green space than any other city in the United States, with **more than 80,000 acres of urban parks**



 The **Jacksonville Skyway** is a **2.5-mile elevated driverless monorail** over St. Johns River in Downtown Jacksonville.

A **\$430-million-850,000- square-foot** aviation manufacturing and production facility at Cecil Airport will bring almost **400 new high skilled jobs** to Jacksonville.

## FOSTERING CONNECTIONS & ACCESS

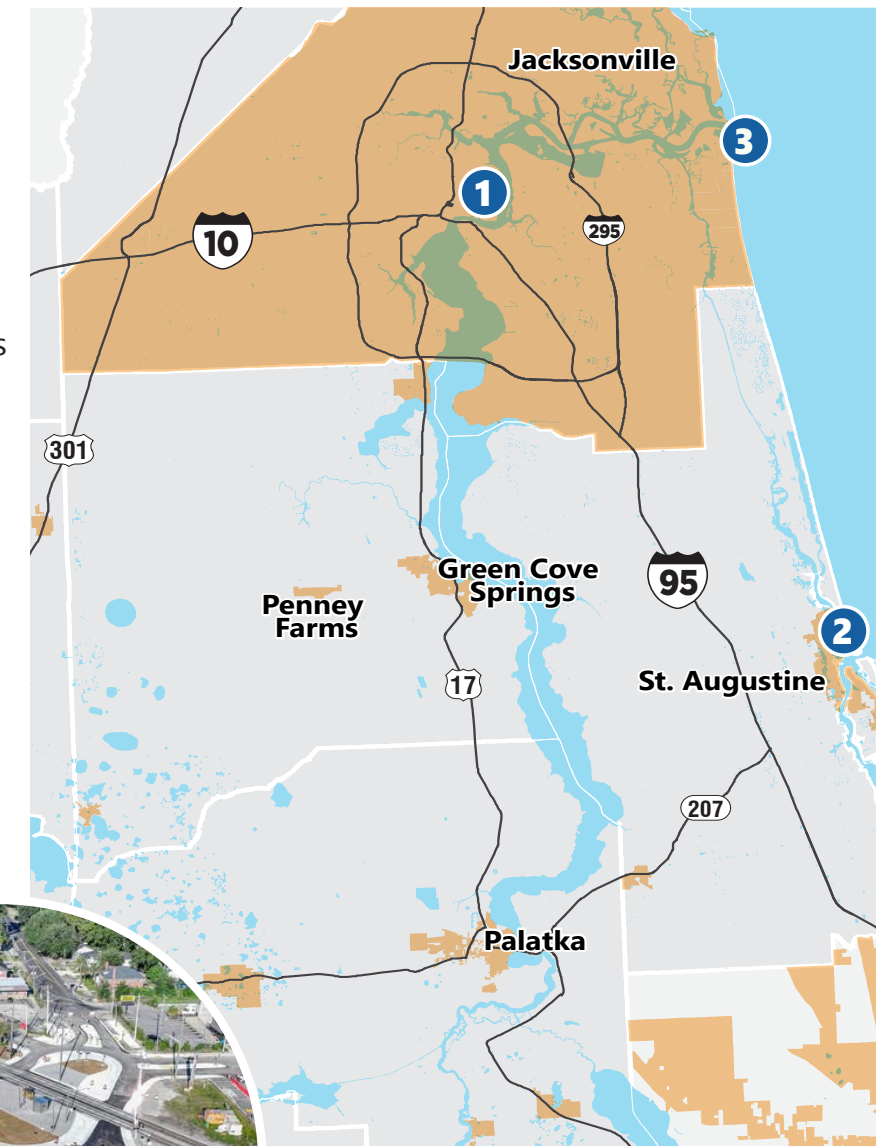
**54,000** workers travel between St. Johns and Duval Counties daily.

Northeast Florida's development was originally spurred by rail and its communities will continue to prioritize, improve, and expand regional modal connections.

**1** A new **roundabout** opened at Jacksonville's Post St/ McDuff Ave/Old Roosevelt Blvd in October 2025. Originally a challenging configuration of three signals, two rail crossings, and seven approach roadways, the new design with additional safety enhancements anticipates at least a 78% reduction of rail incidents.

**2** The City of St. Augustine is advancing **Mobility Oriented Development (MOD)**, establishing planning and zoning strategies to support walkable, mixed-use development and future multimodal transportation options.

**3** JTA increased the **Mayport Ferry service** frequency by 50% and plans to add a ferry by 2028.



Jacksonville's Post Street/ McDuff Avenue/ Old Roosevelt Blvd Roundabout

Source: FDOT Northeast Florida

### MODAL PROJECTS

-  Areas Within City Boundaries
-  Roadways

## ECONOMY DRIVEN BY FREIGHT MOVEMENT

3.7 million daily combination truck miles traveled in 2023, a 3.8% increase from 2022

The transport of goods via three interstates (I-10, I-75, I-95), Jacksonville's extensive deepwater ports, Norfolk Southern, and CSX rail operations is expected to continue, fostering job growth and economic development in the area.

- **JAXPORT** is Florida's largest container port by volume and one of the nation's top vehicle-handling ports. With access to major interstate highways I-10 and I-95 and multiple direct rail connections, it is among the most well-connected Florida ports. It is also the only U.S. port to offer on-dock liquid natural gas fueling capabilities.
- To prepare for rapid freight growth projected by 2050, the **North Florida TPO** developed strategies such as reducing delays at grade railroad crossings, expanding truck parking, strengthening port gate security and access, and improving the interstate system.
- Northeast's **truck traffic** is projected to grow more than 40 percent, from 329 million miles in 2019 to 456 million miles by 2050.
- FDOT developed the **Truck Parking Availability System** (TPAS) to address the increasing challenge of parking shortage along the interstates. In the Northeast, the TPAS initiative consists of 24 **dynamic message signs** (DMS) that **gather and display parking availability** in real time.



Source: JAXPort

JAXPORT Completed \$100 Million in berth enhancements at Blount Island



In 2025, JAXPORT transported 18.7 million tons and 1.4 million 20-foot equivalent units (TEUs).

**37,000+**  
**JAXPORT-supported jobs** by 2035, representing **\$4.3 billion** of regional economic impact.



## VULNERABILITY OF THE NORTHEAST COMMUNITIES

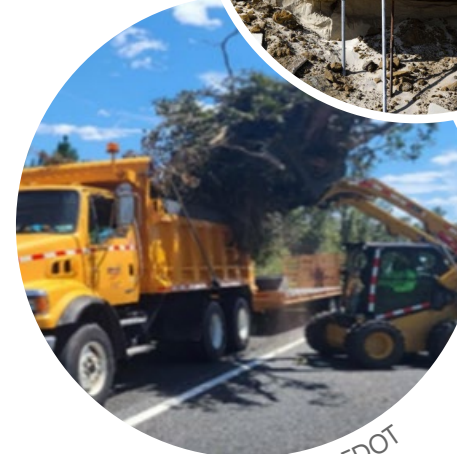
Both the Atlantic and the Gulf coasts experience threats and the impacts of storms. The combination of these factors limits the magnitude of future development along the coasts. FDOT and other agencies in the region work together to plan for and rapidly respond to these storms.

- FDOT is advancing a **seawall replacement** and resiliency project between the Bridge of Lions and Charlotte Street in downtown St. Augustine. The approximately \$19.9 million project will replace aging seawall infrastructure, improve flood resilience, and construct a 42-inch coquina concrete barrier to help protect the bayfront from flooding.
- Using storm surge, flood risk, and sea level rise data, the North Florida TPO identified **86 vulnerable projects** to strengthen critical facilities in the transportation network. By addressing these risks proactively, the TPO aims to ensure a sustainable, efficient, and reliable transportation system that can adapt to future challenges.
- FDOT rapidly responded to support relief efforts and removed more than 100,000 cubic yards of debris within the first two weeks of Hurricane Idalia. In 2024, over **7.6 million cubic yards of debris** were removed from state, local, and private roadways.

Hurricane Matthew Impact on St. Augustine Beach



Source: FDOT



Source: FDOT

Debris cleanup in District 2 communities

## RECENT KEY PROJECTS

The Gainesville & Alachua County Transportation Planning Organization has undertaken a study of managed lanes on **I-75** from the Marion County line to US-441, with an interchange modification planned at Williston Road.



Source: FDOT

I-75

The **First Coast Expressway** (FCE) is a 46-mile limited-access toll facility being completed in phases across Duval, Clay, and St. Johns Counties, ultimately connecting I-10 to I-95. Multiple segments are already open to traffic, with remaining sections—including a new St. Johns River bridge with a shared-use path—under construction. Additional project phases continue advancing toward completion around 2030. Once complete, the FCE will improve regional connectivity, enhance hurricane evacuation capacity, relieve congestion, and expand mobility options throughout the Jacksonville metropolitan area.



Source: FDOT

FCE New St. Johns River Bridge

**I-95** will receive over a billion dollars in the next five years from the FDOT Work Program. Investment will go toward widening I-95 from Baymeadows Road to the Duval-St. Johns County line, the FCE, and the International Golf Parkway. Construction is underway on the I-95 widening project from south of Emerson Street to Atlantic Boulevard in Jacksonville, which will expand the corridor to five lanes in each direction and reconstruct key interchange components.



Source: FDOT

I-95