



# SYSTEMS FORECASTING AND TRENDS

The Systems Forecasting & Trends (SFT) Office supports transportation planning and data-driven decisions by analyzing, forecasting and reporting system demand, performance, and trends and conditions. SFT's Performance and Trends Section provides system performance data and coordinates federal performance measures and targets. This section also monitors and reports system, economic, demographic, environmental, and other trends and conditions. SFT's Forecasting and Modeling Section provides guidance and training for travel demand modeling, supports the Transportation Forecasting Forum, and conducts economic studies and revenue forecasts.

**Performance Data Integration Space**  
Florida Department of Transportation  
Systems Forecasting and Trends Office

The Performance Data Integration Space (PDIS) is the hub for information produced and curated by the Florida Department of Transportation's (FDOT) Systems Forecasting and Trends Office to assist department stakeholders with data-driven transportation decisions.

- Performance Data
- Performance Reports
- Economic Trends
- Other Dashboards
- Metropolitan Planning Organization (MPO) Performance Resources
- Fast Facts & Emerging Trends
- Demographic & Vehicle Data
- Resources & Links

## Performance Data Integration Space (PDIS)

<https://performance-data-integration-space-fdot.hub.arcgis.com/>

The Performance Data Integration Space (PDIS) serves as a hub for information produced and curated by SFT. This platform assists stakeholders in making data-driven transportation decisions, providing users with the information available for analysis and review.

## Florida Transportation Forecasting Resource Hub

<https://www.fdot.gov/forecasting>

The Transportation Forecasting Resource Hub provides information to support transportation-related forecasting, including travel demand modeling. Here, you can find guidance and manuals, download models, access shared data, and register for upcoming training events. The site also supports the Florida Transportation Forecasting Forum, formerly the Florida Model Task Force.

## FLORIDA TRANSPORTATION FORECASTING RESOURCE HUB

models  
guidance  
resources  
training  
committees



# SYSTEMS FORECASTING AND TRENDS



Download the flyer

## FDOT Source Book

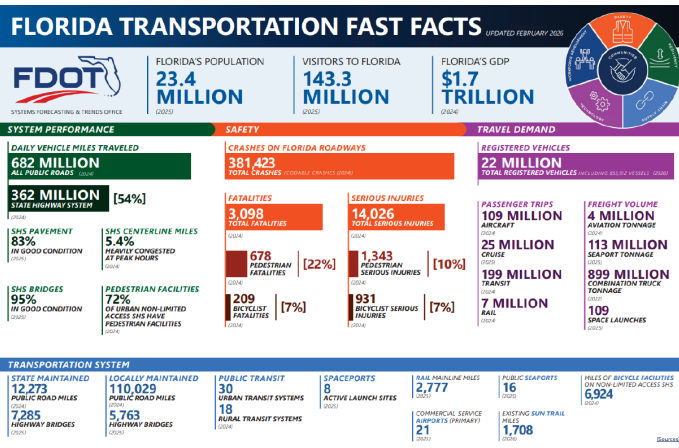
<http://fdotsourcebook.com/>

The FDOT Source Book serves as a reliable resource for tracking multimodal performance metrics and downloading data related to Florida's transportation system, helping to evaluate system performance at the statewide, district, regional, county, corridor, and segment levels.

## Florida Transportation Fast Facts

<https://tinyurl.com/fdotfastfacts-feb-2026>

This document provides a high-level summary of Florida's transportation system with key metrics on statewide system performance, safety, and travel demand.



## Florida Trends and Conditions

<https://tinyurl.com/fdotrends>

The suite of Trends and Conditions documents highlights the trends, opportunities, and challenges impacting the state and regional areas throughout the state of Florida. These statewide and regional trends that shape our future cover areas in safety, population and visitor growth, land use, resilience, technology, people and freight movements, and transportation systems. The regional stories share the unique challenges and opportunities for Florida's diverse regions.

## Florida Transportation Forecasting Forum

<https://tinyurl.com/fdot-sft-forum>

The Florida Transportation Forecasting Forum, formerly the Florida Model Task Force, aids in the development of policy and procedural guidelines for transportation modeling within the state through the use of the Florida Standard Model. A wide variety of transportation professionals play important roles within the Florida Transportation Forecasting Forum, including FDOT districts, Florida Turnpike Enterprise, transit agencies, MPOs/TPOs, and more.

## Demographic Analysis

<https://www.fdot.gov/planning/demographic>

Annual demographic analyses and summaries of commuting trends provide users with an enhanced understanding of the state's demographics, highlighting trends in the state's population and commuting behaviors.

## Macroeconomic Study of FDOT's 5-Year Work Program

<https://tinyurl.com/fdotmacrostudy>

The Macroeconomic Study, conducted every five years in response to statutory requirements, estimates the state's return on investment for every dollar spent on its infrastructure.

## Training

<https://tinyurl.com/fdotstfttraining>

SFT prioritizes its education and training efforts to aid in the improvement of current processes. This will allow the office to be transparent in its forecasting efforts, assisting users with direct access to the resources needed to support the district, MPO/TPO, etc.