

CURRENT CONDITIONS MOBILITY REPORT



FORECASTING & TRENDS OFFICE

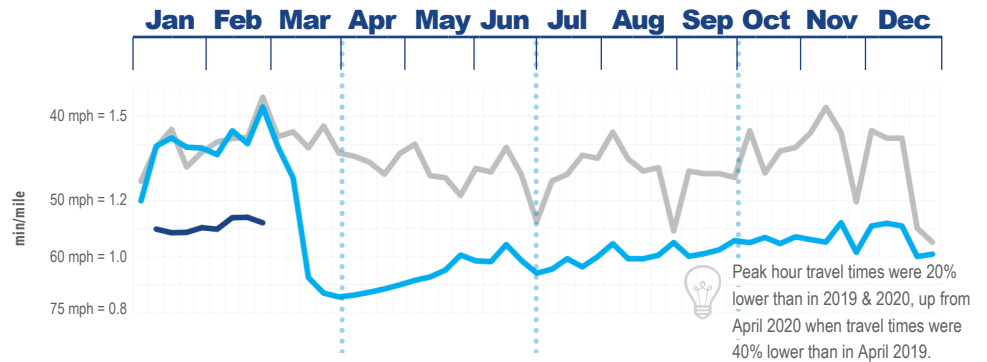
Last updated 2021-04-08

2019 2020 2021

AUTO TRAVEL TIMES:

Average weekday 5-6 PM travel times on freeways in major urban areas¹

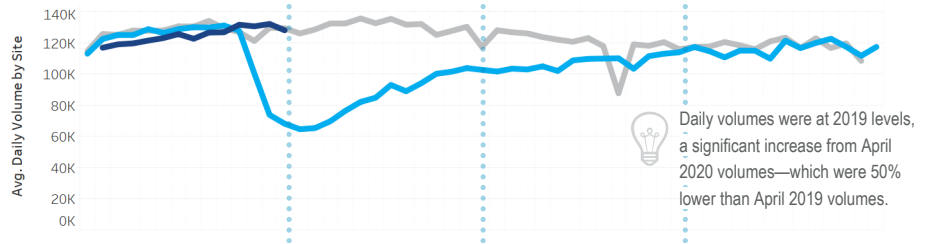
Source: HERE.com probe data from RITIS.org



AUTO TRAFFIC VOLUMES:

Average weekday traffic volumes on freeways in major urban areas¹

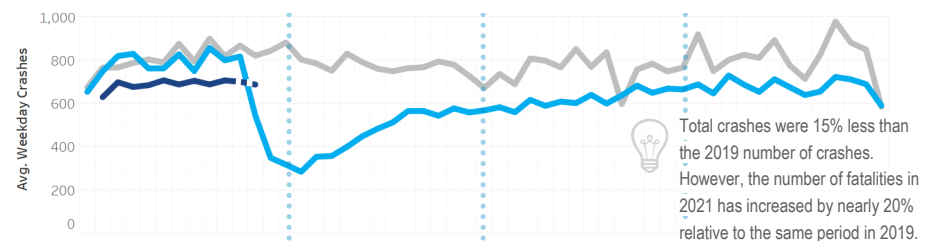
Source: Telemetered traffic station data from FDOT Transportation Data and Analytics Office



CRASHES:

Statewide, average number of crashes per weekday on interstates, US roads, and state roads (i.e., no local roads)

Source: University of Florida's SignalFour. Dashed lines represent estimates based on incomplete data as crash reports may lag for several weeks.

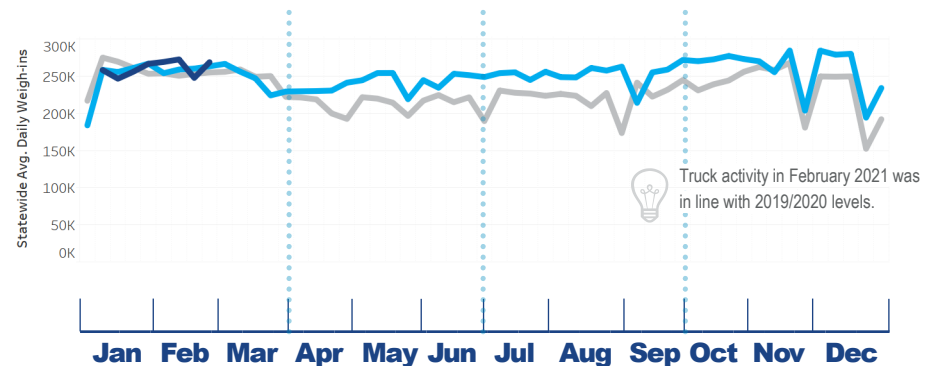


STATEWIDE

FREIGHT ACTIVITY:

Average weekday daily vehicles through all weigh-in-motion stations

Source: Weigh-in-motion data from FDOT Transportation Data and Analytics Office



¹ Major urban areas defined as those with 1M+ population, per FDOT's [Urban Boundaries](#) file. They are Miami, Orlando, Tampa, and Jacksonville

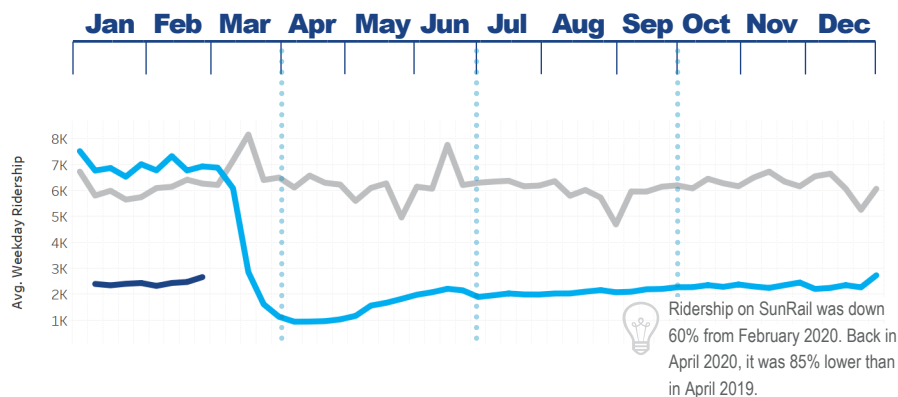
² The first week of January 2021 is excluded from most charts as it only had one weekday and that weekday was a holiday (Friday, January 1, 2021)

■ 2019 ■ 2020 ■ 2021

COMMUTER RAIL RIDERSHIP:

Average weekday boardings on FDOT D5's commuter rail system

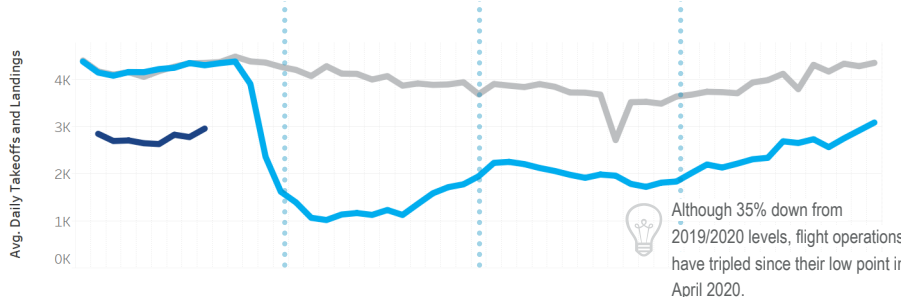
Source: SunRail



AIR TRAVEL:

Average weekday takeoffs and landings at major airports

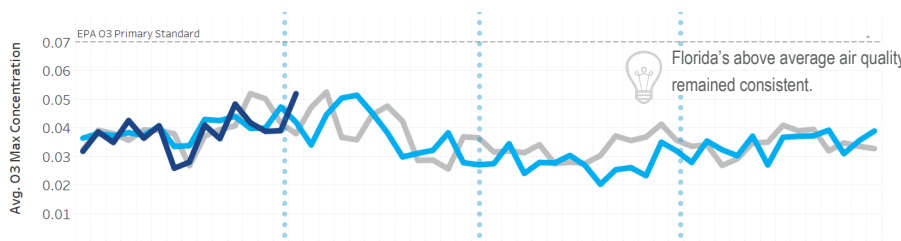
Source: Federal Aviation Administration data for MIA, FLL, MCO, TPA, JAX



AIR POLLUTION:

Average daily ground-level ozone (O₃) maximum concentration (in parts per million) in major urban areas

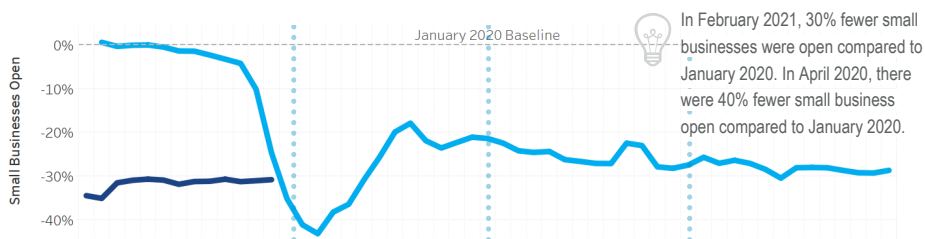
Source: EPA AirData. EPA considers O₃ levels below 0.07 ppm to be adequate for public health



SMALL BUSINESSES OPEN:

Statewide small businesses open, relative to a January 2020 baseline. A business is considered open if it had at least one transaction in the last three days.

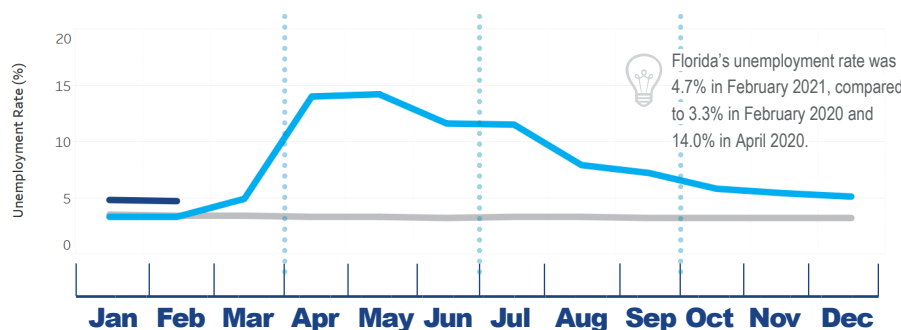
Source: Womply credit card transaction data via Opportunity Insights (tracktherecovery.org)



UNEMPLOYMENT:

Percent of civilian non-institutional population unemployed, seasonally adjusted

Source: Bureau of Labor Statistics, Local Area Unemployment Statistics.



¹ Major urban areas defined as those with 1M+ population, per FDOT's [Urban Boundaries](#) file. They are Miami, Orlando, Tampa, and Jacksonville

² The first week of January 2021 is excluded from most charts as it only had one weekday and that weekday was a holiday (Friday, January 1, 2021)