



EMERGING TRENDS



FORECASTING AND TRENDS OFFICE

JUNE 2023

86%

FLORIDIANS

live in URBAN AREAS



21.2%

of Florida's POPULATION is

FOREIGN BORN

30%

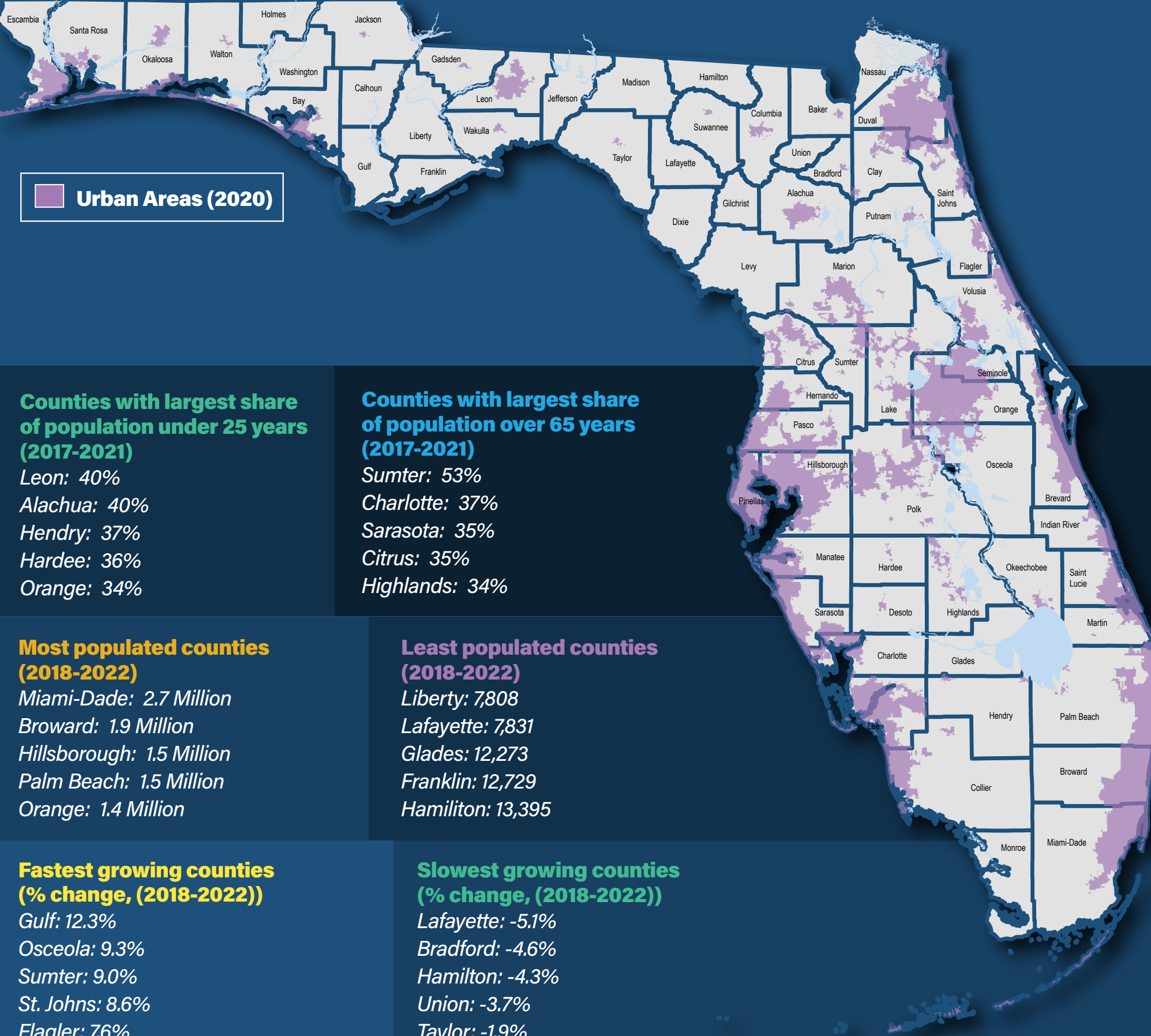
of Florida's households speak a language

OTHER THAN ENGLISH

at home



FLORIDA'S URBAN AREAS



Counties with largest share of population under 25 years (2017-2021)

- Leon: 40%
- Alachua: 40%
- Hendry: 37%
- Hardee: 36%
- Orange: 34%

Counties with largest share of population over 65 years (2017-2021)

- Sumter: 53%
- Charlotte: 37%
- Sarasota: 35%
- Citrus: 35%
- Highlands: 34%

Most populated counties (2018-2022)

- Miami-Dade: 2.7 Million
- Broward: 1.9 Million
- Hillsborough: 1.5 Million
- Palm Beach: 1.5 Million
- Orange: 1.4 Million

Least populated counties (2018-2022)

- Liberty: 7,808
- Lafayette: 7,831
- Glades: 12,273
- Franklin: 12,729
- Hamilton: 13,395

Fastest growing counties (% change, (2018-2022))

- Gulf: 12.3%
- Osceola: 9.3%
- Sumter: 9.0%
- St. Johns: 8.6%
- Flagler: 7.6%

Slowest growing counties (% change, (2018-2022))

- Lafayette: -5.1%
- Bradford: -4.6%
- Hamilton: -4.3%
- Union: -3.7%
- Taylor: -1.9%

Most densely populated counties (people per square mile) (2018-2022)

- Pinellas: 3,551
- Orange: 1,642
- Broward: 1,637
- Seminole: 1,567
- Hillsborough: 1,488

Least densely populated counties (people per square mile) (2018-2022)

- Liberty: 10
- Lafayette: 14
- Glades: 15
- Taylor: 20
- Franklin : 23

REGIONAL & LOCAL

NOW

Florida's **NONFARM EMPLOYMENT** was over **9.7 MILLION JOBS** in May 2023

Florida's 2021 median **HOUSEHOLD INCOME** was **\$61,777**

13.1% of Florida households lived **BELOW THE POVERTY LINE** in 2022

Florida's **UNEMPLOYMENT RATE** was **2.6%** IN APRIL 2023

6% of households in Florida **DO NOT OWN A VEHICLE** while another **39%** own only **ONE VEHICLE**

TRANSPORTATION is the **FIFTH HIGHEST COST** for a **FAMILY OF FOUR** in Florida

20% of Floridians have a commute time **UNDER 15 MINUTES**

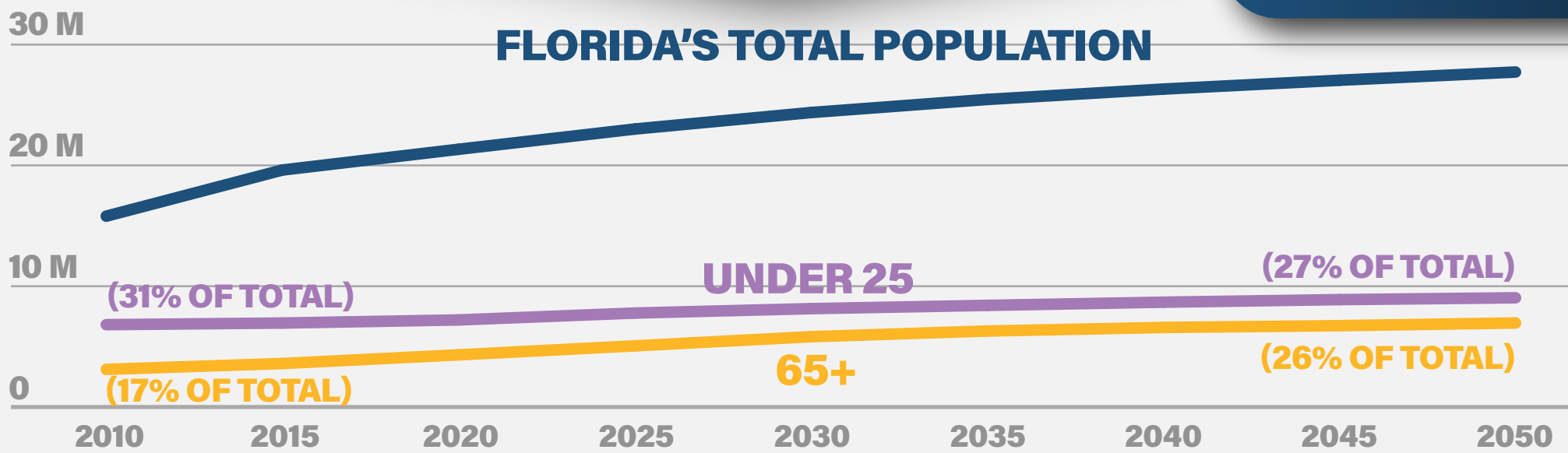
16.6% of Floridians have a commute time of **45 MINUTES OR LONGER**

TRANSPORTATION CHOICES

Motorcycle Endorsements 2017-2021 +8%	Walked to Work 2017-2021 -3%	Transit Revenue Miles 2017-2021 -7%	Average Commute Time 2017-2021 -2%
Bicycling to Work 2017-2021 +3%	Interregional Rail Passengers (SunRail/Tri-Rail) 2017-2021 -32%	Working from Home 2017-2021 +185%	Total Population 2017-2021 +8%

78.6% of Florida's **ANNUAL PERSON TRIPS** is for **FAMILY OR PERSONAL BUSINESS, SCHOOL, RECREATIONAL OR SOCIAL PURPOSES**

NEXT



60% of Florida's **POPULATION GROWTH** between 2021 and 2050 is projected to be concentrated in **10 COUNTIES**

Orange, Hillsborough, Miami-Dade, Lee, Palm Beach, Broward, Polk, Osceola, Duval & Pasco

Florida's **65+ POPULATION** is projected to **GROW BY 67%** by 2050

67% OF AGING ROAD USERS (age 65+) are **OUTLIVING THEIR ABILITY TO DRIVE** by an average of **7-10 YEARS**

Florida is projected to add **580 PEOPLE EVERY DAY** for the next **30 YEARS**

INCREASING DIVERSITY (PROJECTED GROWTH BY RACE)

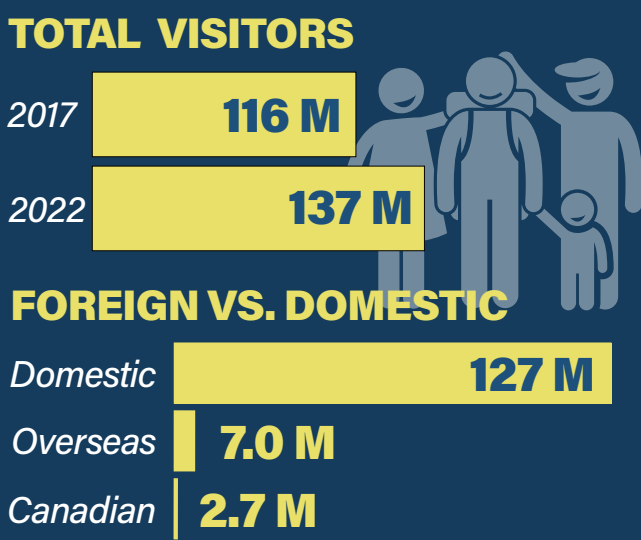
Non-Hispanic White	+10%
Non-Hispanic Black	+36%
Hispanic	+54%
Other	+42%

STATE & INTERREGIONAL

NOW

Florida has GDP of **\$1.3 TRILLION** ranking **4TH** among all states

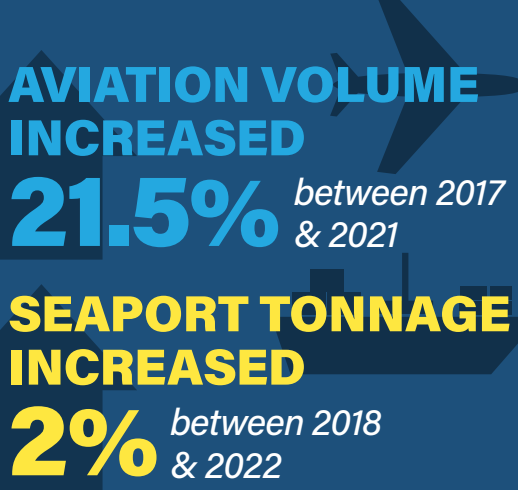
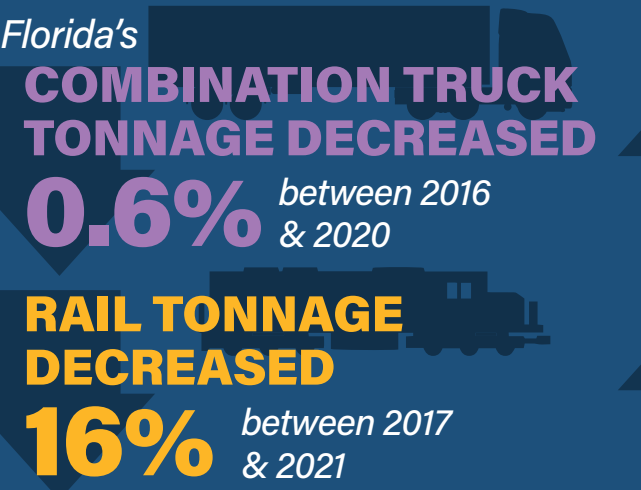
If Florida were an independent country, it would rank **15TH** in the world



38% of Florida's visitors **ARRIVE VIA AIR**

Florida has a population of **22.2 MILLION** today, ranking **3RD** among the states

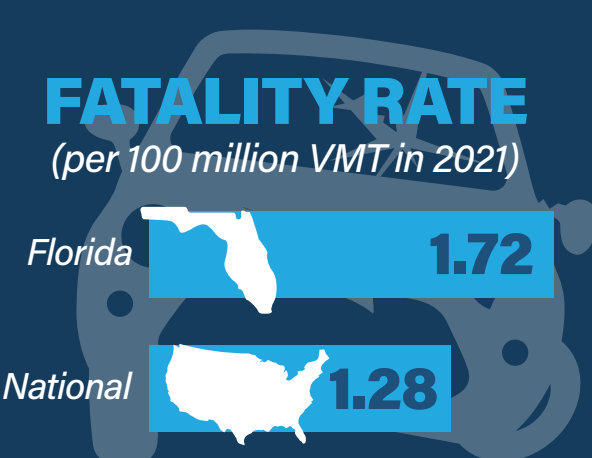
MIGRATION accounts for **89%** of **POPULATION GROWTH** between 2010 & 2020



For 2022 Florida's total merchandise trade was **\$190 BILLION**

\$103 B IMPORT	\$87 B EXPORT
-----------------------	----------------------

Florida is home to **21** U.S. military bases with more than **66,971** active military personnel



Florida manufacturers employed **388,000 WORKERS** in 2021, producing **\$64.5 BILLION** IN OUTPUT







Florida's population is projected to grow from **22.2 MILLION** in **2022** to **27.9 MILLION** residents in **2050**

An increase of **25%**

The total number of **OUT-OF-STATE VISITORS** to Florida is projected to **INCREASE 46%** between 2023 and 2043

NEXT

FLORIDA'S 2030 GOALS

 GLOBAL RANKING FOR GROSS DOMESTIC PRODUCT	10th	\$92B	ORIGIN GOODS EXPORTS TO GLOBAL MARKETS	
 TRADE, LOGISTICS, & MANUFACTURING JOBS	1.3M	\$129B	SERVICES EXPORTS TO GLOBAL MARKETS	
 U.S. RANKING FOR MANUFACTURING OUTPUT	5th	4.8%	RURAL COUNTIES' SHARE OF FLORIDA GDP	

RESILIENCE

NOW

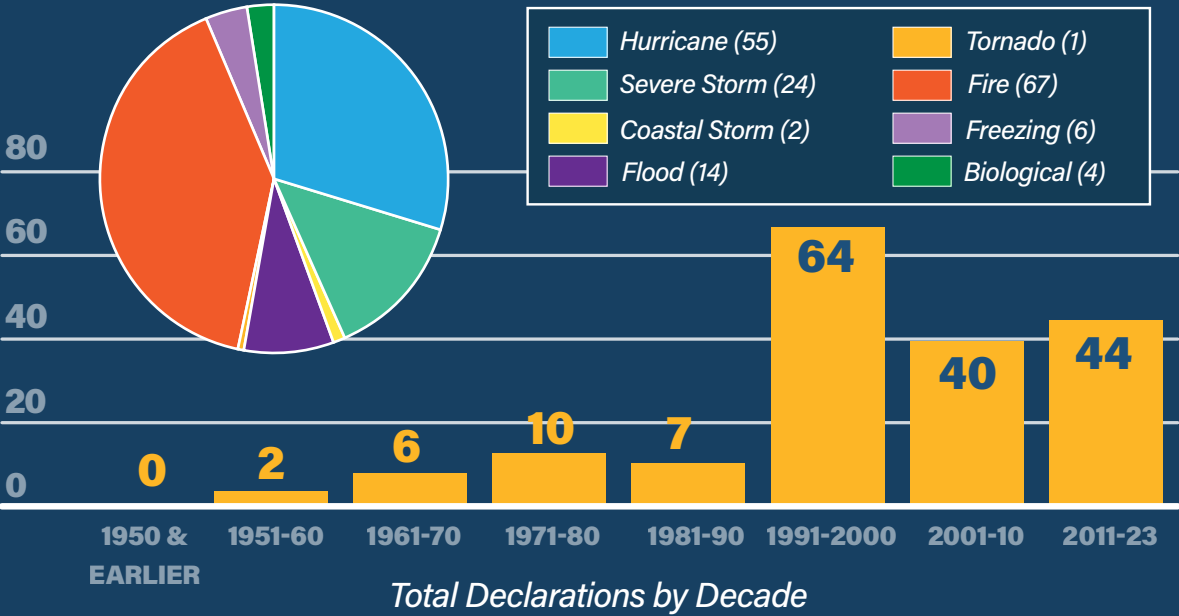
Florida has a **HIGHER FREQUENCY OF TORNADOES** per 10,000 square miles **THAN ANY OTHER STATE**

There are **16.9 MILLION PEOPLE** living in Florida's **COASTAL COUNTIES**

2 OUT OF 10 Florida regions have a **SHORTAGE OF SHELTER SPACE** for the general population

3 REGIONS have a shortage of shelter space for **SPECIAL NEEDS POPULATIONS**

FEDERAL EMERGENCY MANAGEMENT AGENCY TOTAL DECLARATIONS



HURRICANE IAN

Category 4 - September 2022

23 counties evacuated

739,771 insurance claims

\$17.2 BILLION in estimated insurance loss



HURRICANE NICOLE

Category 1 - November 2022

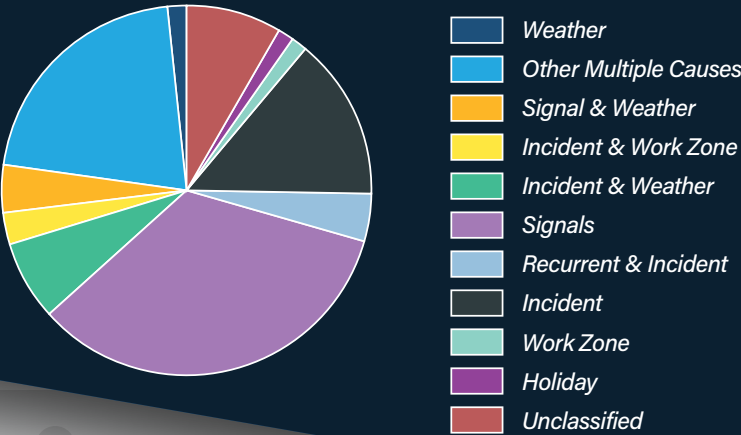
12 counties evacuated

28,092 insurance claims

\$253 MILLION in estimated insurance loss

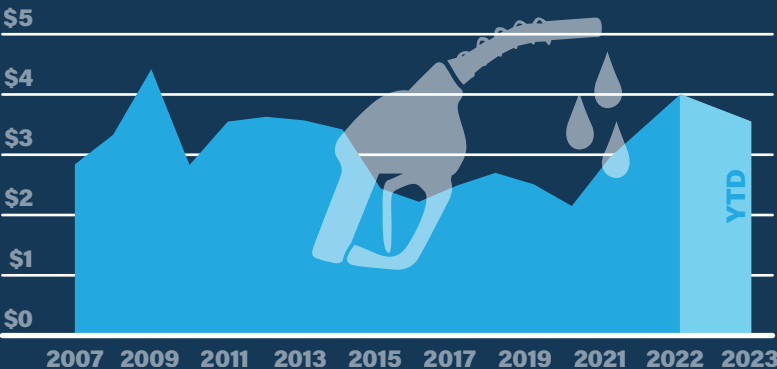
Since 2000, **TIDAL FLOODING** across Florida has **INCREASED BY 352%**, while sea levels are rising about **1 INCH EVERY THREE YEARS**

SOURCES OF CONGESTION



In Florida, **INCIDENTS, WEATHER, CONSTRUCTION, AND OTHER SPECIAL EVENTS** account for **46% OF CONGESTION**

AVERAGE ANNUAL FUEL PRICES IN FLORIDA



NEXT

INFLATION IS AT A 40-YEAR HIGH

After **LOSING 1.8M JOBS** in early 2020, Florida has **GAINED BACK ALL LOST JOBS** and **ADDED AN ADDITIONAL 664,000 JOBS**

The increasing **GLOBAL INTEGRATION** of Florida's economy means our **TRADE, TOURISM, AND OTHER INDUSTRIES** can be impacted by recessions, instability, and supply chain disruptions around the world

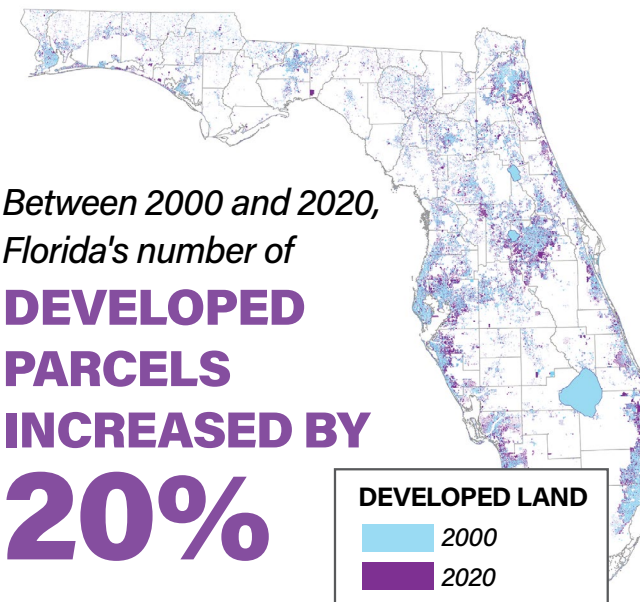
More than **1/2** OF ALL JOBS COULD BE AUTOMATED TODAY using current technologies

Up to **85% OF ALL JOBS** in 2030 could be in industries or occupations that **DO NOT EXIST TODAY**

Statewide partner studies of potential future development in the year 2070 project between **3.5 MILLION & 5.4 MILLION ACRES** of **ADDITIONAL LAND** could be developed

Florida can expect between **2.2 AND 2.5 INCHES OF SEA LEVEL RISE** between 2020 and 2030

*Depending on Location, NOAA Low Projection (2022)



TECHNOLOGY

NOW

More Floridians

WORK FROM THEIR HOMES
than **USE PUBLIC TRANSIT**
for their commute to work



**TELEHEALTH USE
HAS INCREASED**

38X

from the
pre-COVID 19
baseline



62%

of college students
took at least one
ONLINE COURSE
in 2021



85.4%

of Florida households have a

**BROADBAND INTERNET
CONNECTION**

98.9% & 86.1%
of urban areas & of rural areas

have **3 OR MORE
SERVICE PROVIDERS**



E-commerce has more than

TRIPLED

in the U.S. since 2019



Inner city
trips with

**SHARED
BICYCLES &
E-SCOOTERS**

have risen

60%
YEAR-OVER-YEAR



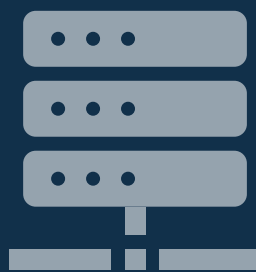
The
**TOTAL AMOUNT
OF DATA**
consumed in 2021 was

**79
ZETTABYTES**

and is projected to be over

**180
ZETTABYTES**

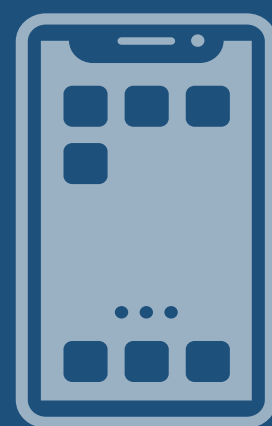
by 2025



Globally,

84%

of **MOBILE
CONNECTIONS**
will be with
SMARTPHONES
in 2025



24 states allow level 4

**AUTONOMOUS SEMI-TRUCK
COMMERCIAL
DEPLOYMENT**



By 2030, nearly half of

medium- and heavy-duty trucks will be

**CHEAPER TO BUY, OPERATE,
AND MAINTAIN AS ZERO
EMISSIONS VEHICLES**

By 2030,

AUTOMOBILE MANUFACTURERS
are expecting upwards of

50%

of global vehicle sales
will be **ELECTRIC**



Globally, the majority of new cars shipped
will be equipped with embedded

CONNECTIVITY TECHNOLOGY

in 2023, and the share of

CONNECTED CARS will account for nearly
3/4 OF ALL CARS SOLD BY 2025

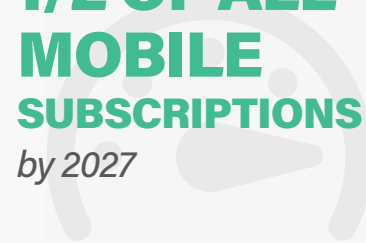


NEXT

5G will account
for nearly

**1/2 OF ALL
MOBILE
SUBSCRIPTIONS**

by 2027



In 2022, the **GLOBAL ADDITIVE MANUFACTURING
MARKET SURPASSED \$256 BILLION**

and is suspected to

GROW \$183 BILLION

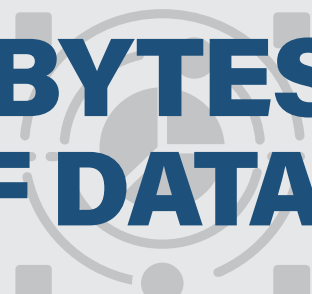
by 2032



By 2025, it is estimated that more than

**171 ZETTABYTES
(171 X 10²¹) OF DATA**

will be generated annually



AMAZON AIR
would put

70%

of the
**U.S.
POPULATION**
within
**NEXT-DAY
REACH**



By 2030,

**URBAN AIR
MOBILITY**

could provide

**750 MILLION
PASSENGER
FLIGHTS**

per year



**COMMERCIAL SPACE
STATIONS**

may be developed in
low earth orbit as early as 2025



UPS used **DRONES TO DELIVER**

COVID-19 VACCINES in Winston Salem, North Carolina.

DRONES WERE ALSO USED TO DELIVER

PRESCRIPTION MEDICATION in The Villages, Florida.





FORECASTING AND TRENDS OFFICE

Becky Marsey

Florida Department of Transportation
605 Suwannee Street, Mail Station 28
Tallahassee, Florida 32399-0450

850-414-4923 // Rebecca.Marsey@dot.state.fl.us

www.fdot.gov/planning/fto

SOURCES