

Sebastian Inlet Bridge *(James H. Pruitt Memorial Bridge)*

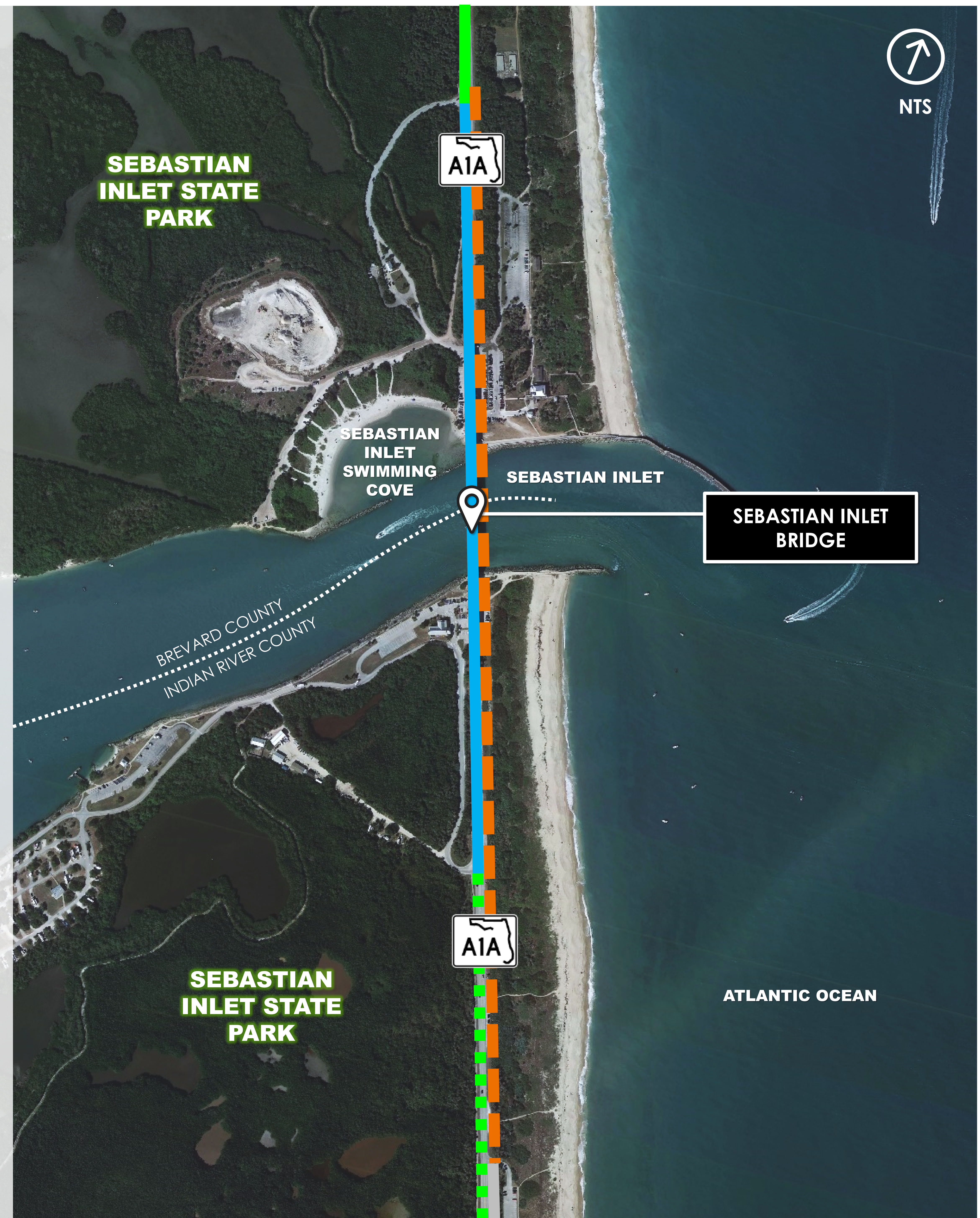
- Constructed 1964
- Repaired or retrofitted – 1978 and 2003
- Existing Conditions
 - Bridge clearance: 39-foot vertical, 150-foot horizontal
 - Bridge width: 34-foot 3-inches
 - Observation/fishing piers under bridge deck - north and south
 - Two-lane facility – roadway and bridge
 - Two-foot-wide shoulders – on bridge
 - Shared use path – west side north of bridge
 - Sidewalk – west side south of the bridge
 - No bicycle or pedestrian facilities on the bridge
- Eligible for the National Register of Historic Places
 - Criterion C – Engineering
- Part of the Indian River Lagoon National Scenic Byway

Purpose

- Address bridge structural and functional deficiencies
- Address the gap in system linkage for bicyclist and pedestrians
- Evaluate bridge alternatives

Need

- The bridge is rated structurally deficient (but still safe)
- The bridge health index is a measure of overall bridge condition
- Supports the Indian River County Bicycle and Pedestrian Plan for SR A1A at this location
- Bicycle and pedestrian counts support addressing the gap in system linkage



Legend: --- Project Limits ■ Existing Shared Use Path ■ Gap in Bicycle and Pedestrian Facilities ■ ■ ■ Existing 8-foot Sidewalk ■ SR A1A RRR Project