

# Welcome

## Alternatives Public Workshop

Virtual Meeting: January 11, 2022 | In-Person Meeting: January 13, 2022

### SR-A1A over Sebastian Inlet

Bridge 880005  
Bridge Replacement  
Project Development and  
Environment (PD&E) Study

FM No. 445618-1-22-02 ETDM: 14433

<https://www.fdot.gov/projects/SebastianInletBridge>



# Public Notice



Property owner/tenant notifications



Emails to project contacts list



[www.fdot.gov/projects/SebastianInletBridge](http://www.fdot.gov/projects/SebastianInletBridge)



Florida Administrative Register



Newspaper Advertisements



Social Media



# Meeting Agenda

- Meeting Format Overview
- Alternatives Video
- Question and Answer Session
- Closing Remarks



# Elected Officials in Attendance

# Title VI Compliance

The Florida Department of Transportation is required to comply with various nondiscrimination laws and regulations including Title VI of the Civil Rights Act of 1964.

**Public participation is solicited without regard to race, color, national origin, age, sex, religion, disability or family status.**

Persons wishing to express their concerns relative to FDOT compliance with Title VI may do so by contacting either:

**Sharon SinghHagyan**

FDOT District 4 Title VI Coordinator

3400 West Commercial Boulevard

Fort Lauderdale, FL 33309

(954) 777- 4190

Toll Free: (866) 336-8435, ext. 4190

**[Sharon.SinghHagyan@dot.state.fl.us](mailto:Sharon.SinghHagyan@dot.state.fl.us)**

**Jacqueline Paramore**

State Title VI Coordinator

605 Suwannee Street

Tallahassee, Florida 32399-0450

(850) 414-4753

Toll Free: (866) 374-3368, ext. 4753

**[Jacqueline.Paramore@dot.state.fl.us](mailto:Jacqueline.Paramore@dot.state.fl.us)**

# Participation Options



## Virtual Option on January 11, 2022, starting at 6:00 p.m.

via a computer, tablet, or smartphone using GoToWebinar

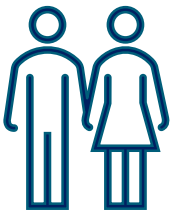
Attendees will remain **muted** throughout the meeting except for the public comment period at the end of the presentation.



## Telephone Option on January 11, 2022, starting at 6:00 p.m.

Dial-in Attendees are in “**listen only**” mode.

If you are calling via a smart phone, you will be able to raise your hand to provide comments at the end of the presentation.



## In-Person Option on January 13, 2022, from 5:30 p.m. to 7:30 p.m.

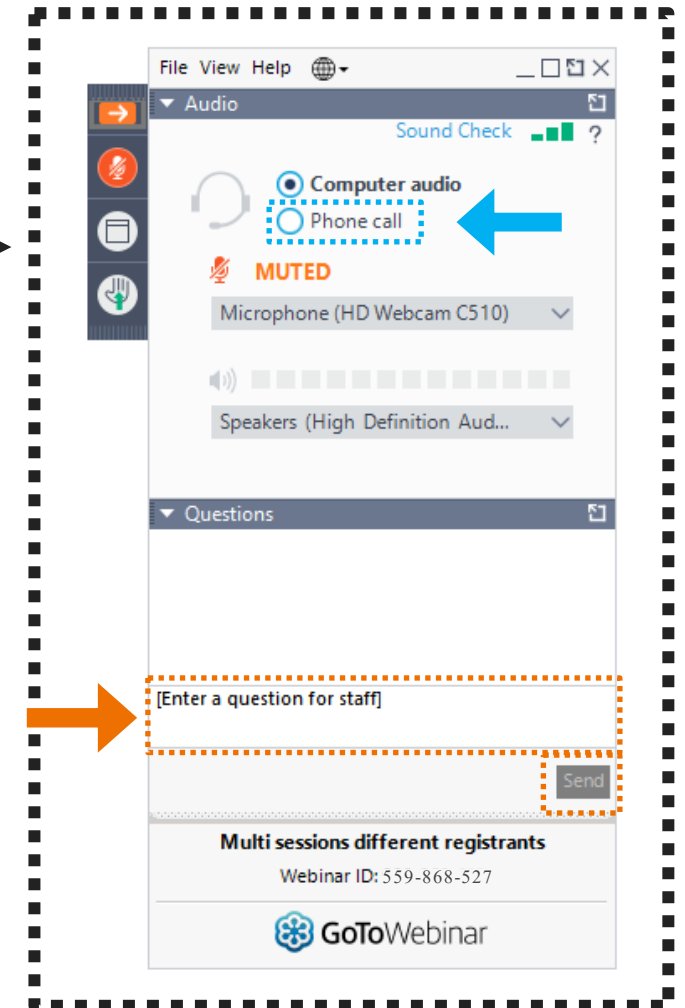
City of Sebastian Community Center

1805 N. Central Avenue

Sebastian, FL 32958

*Social distancing guidelines and local requirements will be followed.*

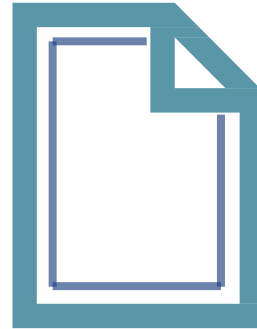
# GoToWebinar Control Panel for Online Attendees



# Technical Information for Dial-in by Phone Attendees



Dial-in attendees are **'listen only'**



Paper copy of meeting presentation



Presenter will say slide number being shown



# To Report a Technical Issue



Type your  
technical issue  
in the control  
panel Question  
box



Send an email  
[Caroline.Sanchez@stantec.com](mailto:Caroline.Sanchez@stantec.com)



Call  
786-437-6762



**FEEDBACK**



# Comments & Questions

## During the meeting



Type your comments or questions in the control panel **Question box**.

Written questions/comments will be addressed first followed by an opportunity for attendees to make a verbal comment.

## After the meeting

Binod.Basnet@dot.state.fl.us



Binod Basnet, PE  
 Florida Department of Transportation  
 District Four  
 3400 W Commercial Blvd  
 Ft. Lauderdale, FL 33309



(954) 777-4146 **or**  
 Toll free at (866) 336-8435, ext 4146



[www.fdot.gov/projects/SebastianInletBridge](http://www.fdot.gov/projects/SebastianInletBridge)

# Public Comments

Please submit your comments by **January 23, 2022**



**Responses** to comments and questions will be provided



All comments and questions are part of the **Public Record**



All registrants will receive a link to the **meeting recording**



OFFICES MAPS & DATA

# SR A1A over Sebastian Inlet - Bridge Replacement PD&E Study

## Welcome

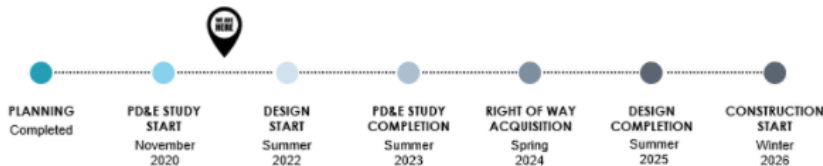
The Florida Department of Transportation (FDOT) has initiated a Project Development and Environment (PD&E) Study along State Road (SR) A1A over Sebastian Inlet. The project location is the Sebastian Inlet Bridge (No. 880005), which carries SR A1A over the Sebastian Inlet at the Indian River and Brevard County line. The purpose of this project is to address the structural and functional deficiencies of the existing bridge and address the gap in system linkage for bicyclists and pedestrians.

Click [here](#) to learn more about the study.

Public involvement is a critical component of the Project Development & Environment (PD&E) Study process and we encourage you to become and stay involved throughout the entire project. Please visit this website often to get the most up-to-date information on the Sebastian Inlet Bridge PD&E Study. Project meetings, workshops, and hearings are advertised on this webpage.

Click [here](#) to be included in the mailing list or to leave a comment.

## Project Development Process



## Alternatives Public Workshop

The Florida Department of Transportation, District Four will conduct an Alternatives Public Workshop virtually on **Tuesday, January 11, 2022**, at 6:00 pm and in-person on **Thursday, January 13, 2022**, from 5:30 pm to 7:30 pm at the **City of Sebastian Community Center** located at **1805 N. Central Avenue, Sebastian, Florida 32958**.

### District Office

Gerry O'Reilly,  
*District Four Secretary*

3400 W Commercial Boulevard  
Fort Lauderdale, FL 33309

Tel: 954-777-4100

Fax: 954-777-4197

[E-Mail Us](#)

### Additional Contacts

[Staff Directory](#)

### Study Resources

[About the Study](#)

[Documents & Publications](#)

[Email Updates](#)

[Photos](#)

[Public Notices](#)

[Schedule](#)

[More...](#)

# Viewing the Meeting Materials

Visit the project website:

[www.fdot.gov/projects/SebastianInletBridge](http://www.fdot.gov/projects/SebastianInletBridge)





# Viewing the Meeting Recording

The Alternatives Public Workshop will be recorded and posted on the project website after the meeting.

[www.fdot.gov/projects/SebastianInletBridge](http://www.fdot.gov/projects/SebastianInletBridge)

**Move Over** a lane — when you can safely do so — for:

- stopped law enforcement
- emergency sanitation
- utility service vehicles
- tow trucks or wreckers

**FLORIDA LAW**  
**MOVE OVER**  
FOR STOPPED  
EMERGENCY VEHICLES

The illustration shows a road with a dashed white line. In the top lane, four emergency vehicles are stopped: a white ambulance, a red fire truck, a green utility truck, and a red tow truck. In the bottom lane, three blue cars are driving. Yellow chevrons point from the emergency vehicles to the cars, indicating the 'Move Over' maneuver. A large yellow sign with the text 'FLORIDA LAW MOVE OVER FOR STOPPED EMERGENCY VEHICLES' is positioned above the road. The sign is flanked by yellow chevrons pointing left and right. At the bottom of the illustration, there is a yellow banner with the text 'flhsmv.gov/moveover', the 'FLHSMV' logo (Florida Highway Safety and Motor Vehicles), and the 'Highway Patrol' logo.

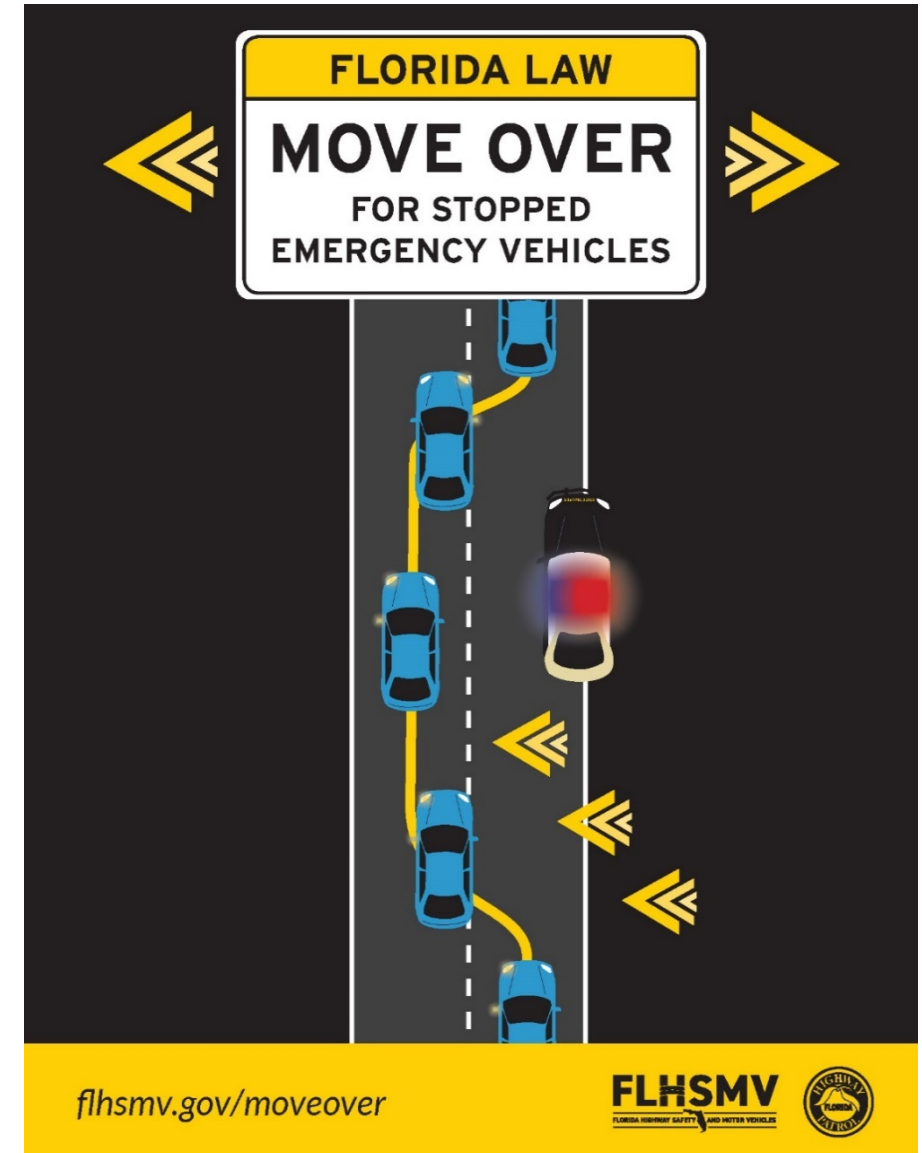
[flhsmv.gov/moveover](http://flhsmv.gov/moveover)

**FLHSMV**  
FLORIDA HIGHWAY SAFETY AND MOTOR VEHICLES



## If you can't **Move Over** — or when on a two-lane road:

- Slow to a speed that is 20 mph less than the posted speed limit
- Slow down to 5 mph when the posted speed limit is 20 mph or less.





# Alternatives Presentation Video



- Project Location
- FDOT Transportation Delivery Process
- FDOT Project Development and Environment (PD&E) Process
- Project Background
- Project Purpose and Need
- Agency Coordination
- Engineering Analysis
- Environmental Analysis
- Alternatives Evaluated
- Public Involvement
- Schedule
- Closing



## Federal-State Partnership

The environmental review, consultation, and other actions required by applicable federal environmental laws for this project are being, or have been, carried out by FDOT pursuant to 23 U.S.C. §327 and a Memorandum of Understanding dated December 14, 2016, and executed by FHWA and FDOT.



# Project Location

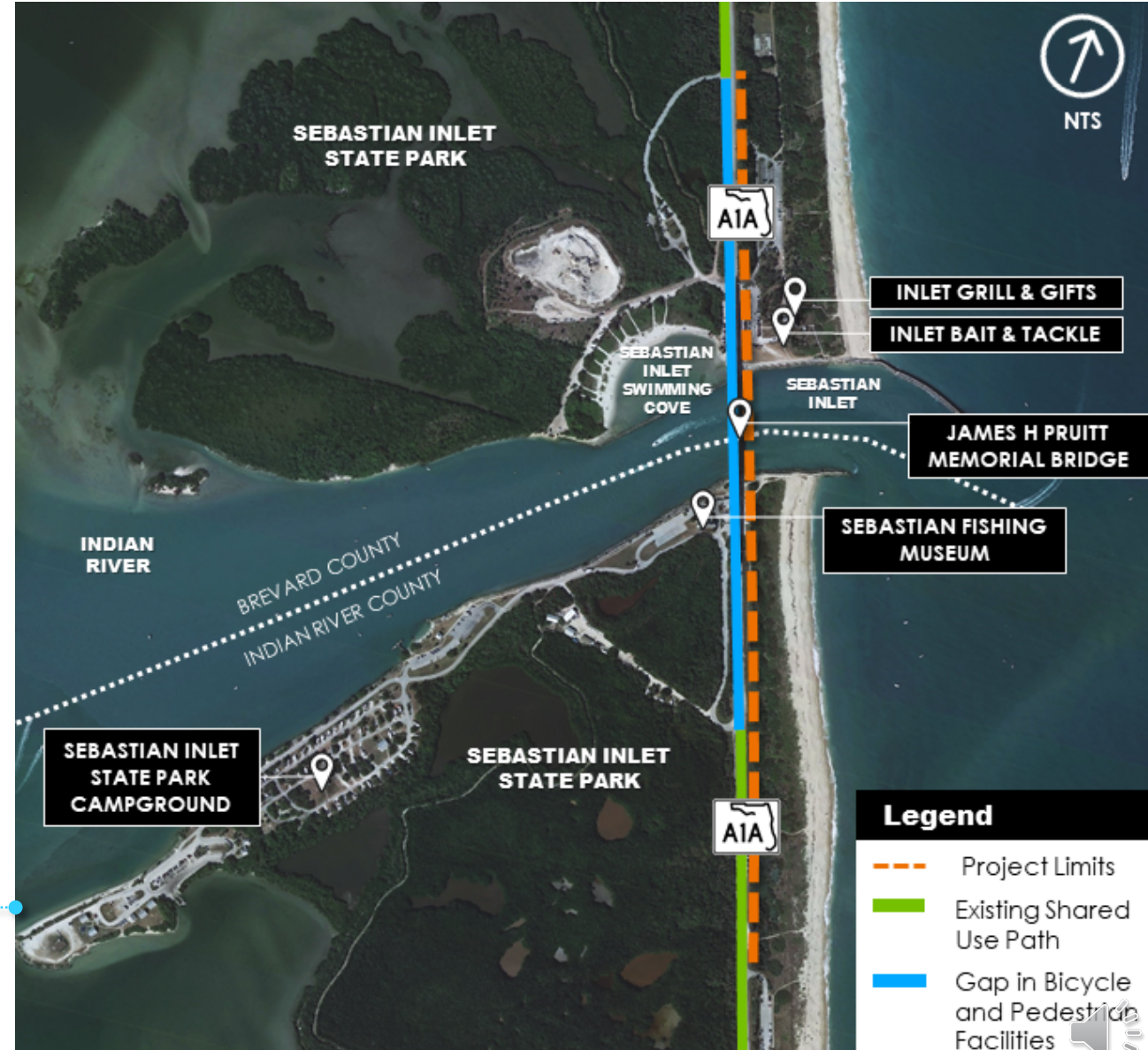
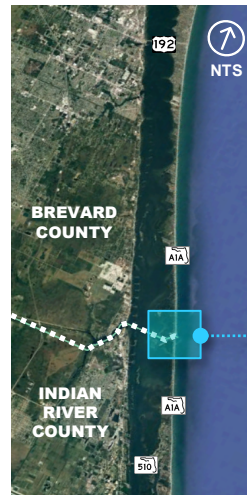
Indian River County and Brevard County Boundary

## SR A1A

- Two-lane Roadway
- Shared use path - west side north and south of the bridge
- Part the Indian River Lagoon National Scenic Byway

## James H Pruitt Memorial Bridge

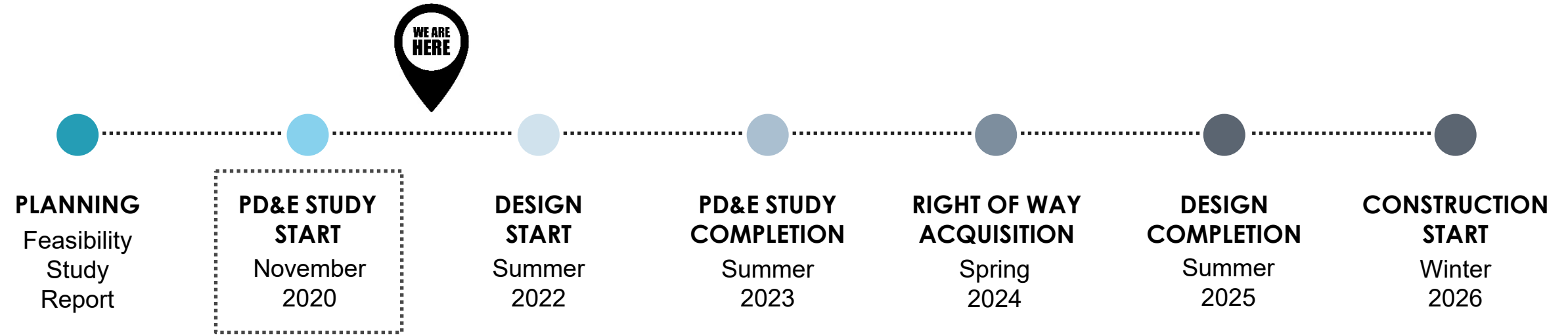
- Two-lane Bridge
- No shoulders
- No bicycle or pedestrian facilities



### Legend

- Project Limits
- Existing Shared Use Path
- Gap in Bicycle and Pedestrian Facilities

# FDOT Transportation Project Delivery Process



A PD&E Study is FDOT's process to evaluate the social, economic, and environmental impacts associated with a planned transportation improvement project.

## The PD&E Process is followed by FDOT

### To evaluate:

- Engineering Alternatives
- Environmental Impacts
- Social, Cultural, Natural, and Physical impacts

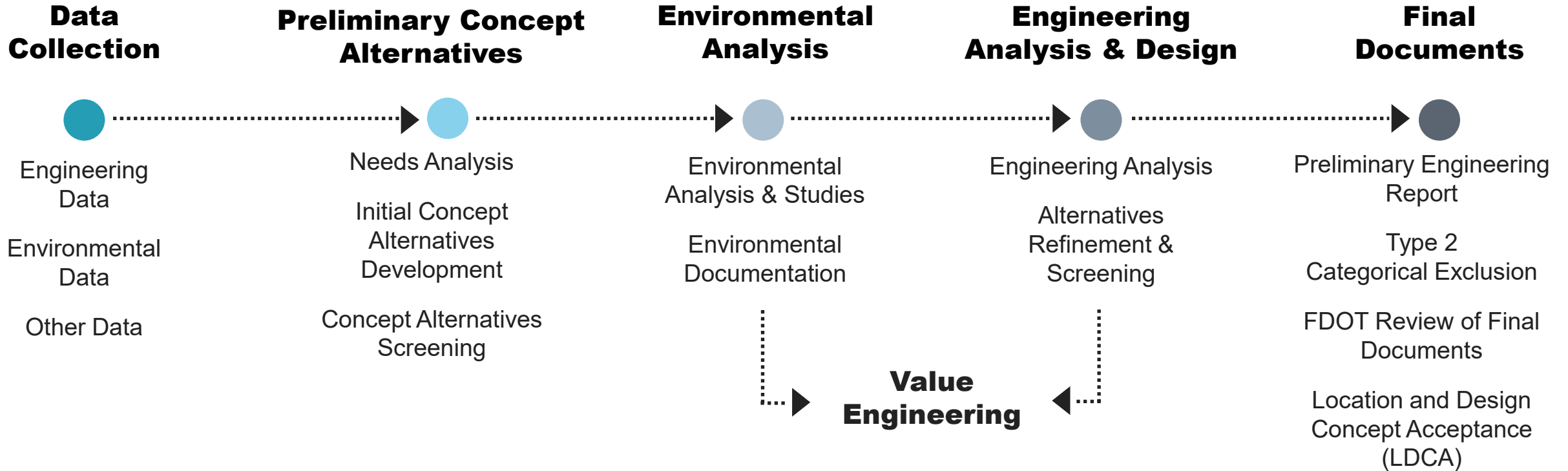
### To comply with:

- National Environmental Policy Act (NEPA)
- Federal and State environmental laws
- Requirements involving federal funding

Continuous Public Involvement



# Project Delivery & Environment (PD&E) Study Process



Continuous Public Involvement



# Project Background

- Constructed 1964
- Repaired or retrofitted – 1978 and 2003
  - Vertical clearance: 39-feet
  - Horizontal clearance: 150-feet
  - Bridge width: 34-feet 3-inches
- Observation/fishing piers under bridge deck on the north and south sides of the bridge
- Eligible for the National Register of Historic Places
  - Criterion C - Engineering
- November 2018 bridge inspection:
  - Bridge Health Index of 79.8
  - Per FHWA’s national bridge rating system – “structurally deficient” (This does not mean the bridge is unsafe – the rating indicates the need for repair or replacement)



**James H. Pruitt Memorial Bridge**





## Purpose

- Address bridge structural and functional deficiencies
- Address the gap in system linkage for bicyclists and pedestrians
- Evaluate bridge alternatives

## Need

- The bridge is rated structurally deficient (but still safe)
  - The rating is based on the bridge deck, superstructure, substructure, and culvert conditions
- The bridge health index is a measure of overall bridge condition
  - The low health index indicates bridge repairs or replacement are needed
- Supports the Indian River County Bicycle and Pedestrian Plan for SR A1A at this location
- Bicycle and pedestrian counts support addressing the gap in system linkage

### 2019 Bicycle/Pedestrian Data Counts

Dec 12 – Dec 15 6:00 AM to 6:00 PM



**231 Bicyclists**



**5 Pedestrians**

*Currently crossing the bridge despite not having appropriate bicycle and pedestrian facilities*





# Agency Coordination

## Federal and State

- US Coast Guard
- US Army Corps of Engineers
- NOAA National Marine Fisheries Service
- Florida Department of State Parks – Sebastian Inlet State Park
- Florida Department of Environmental Protection
- State Historic Preservation Office
- St. Johns River Water Management District



## Local Agencies

- Sebastian Inlet District
- Indian River County and Metropolitan Planning Organization
- Brevard County
- Space Coast Transportation Planning Organization
- Indian River Lagoon Council
- Indian River Scenic Byway Coalition



# Alternatives Considered

## No Build

- No improvements are made
- Serves as baseline for comparison of other alternatives

## Rehabilitation or Repair

## Bridge Replacement

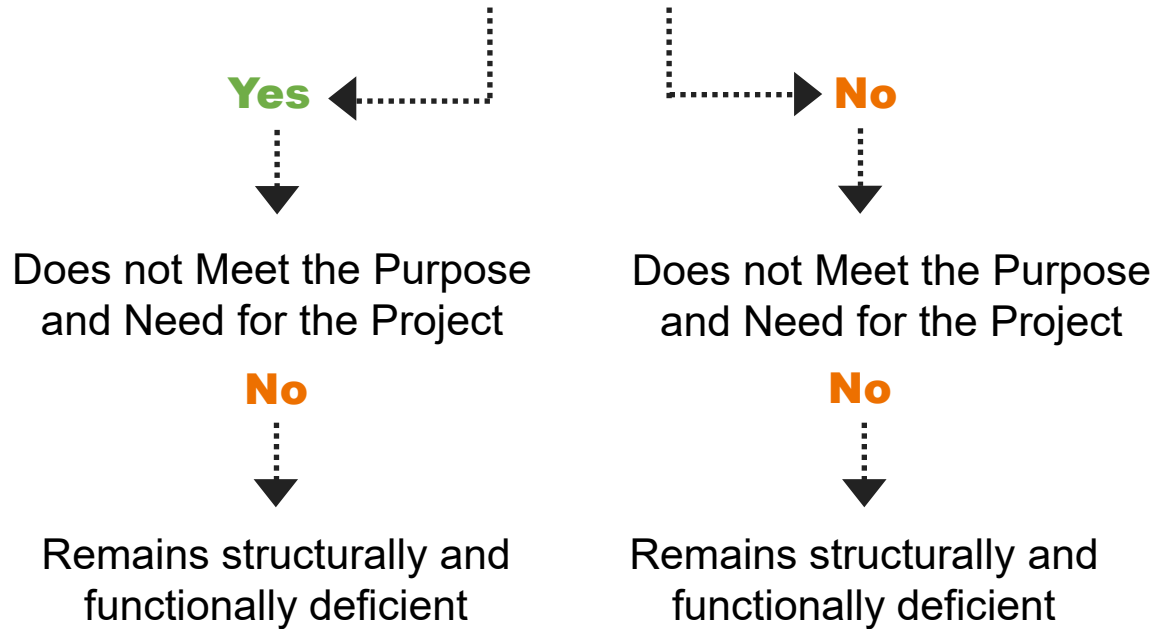
- Evaluation of alignment
  - Center (along existing)
  - East
  - West

## Alternatives Evaluation Process



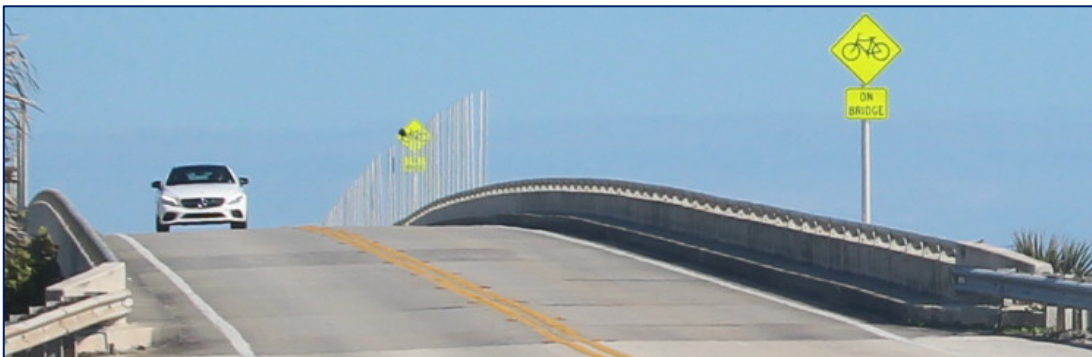
# Rehabilitation Alternative

## Rehabilitate to Existing Condition



## Rehabilitate to Meet the Purpose and Need for the Project

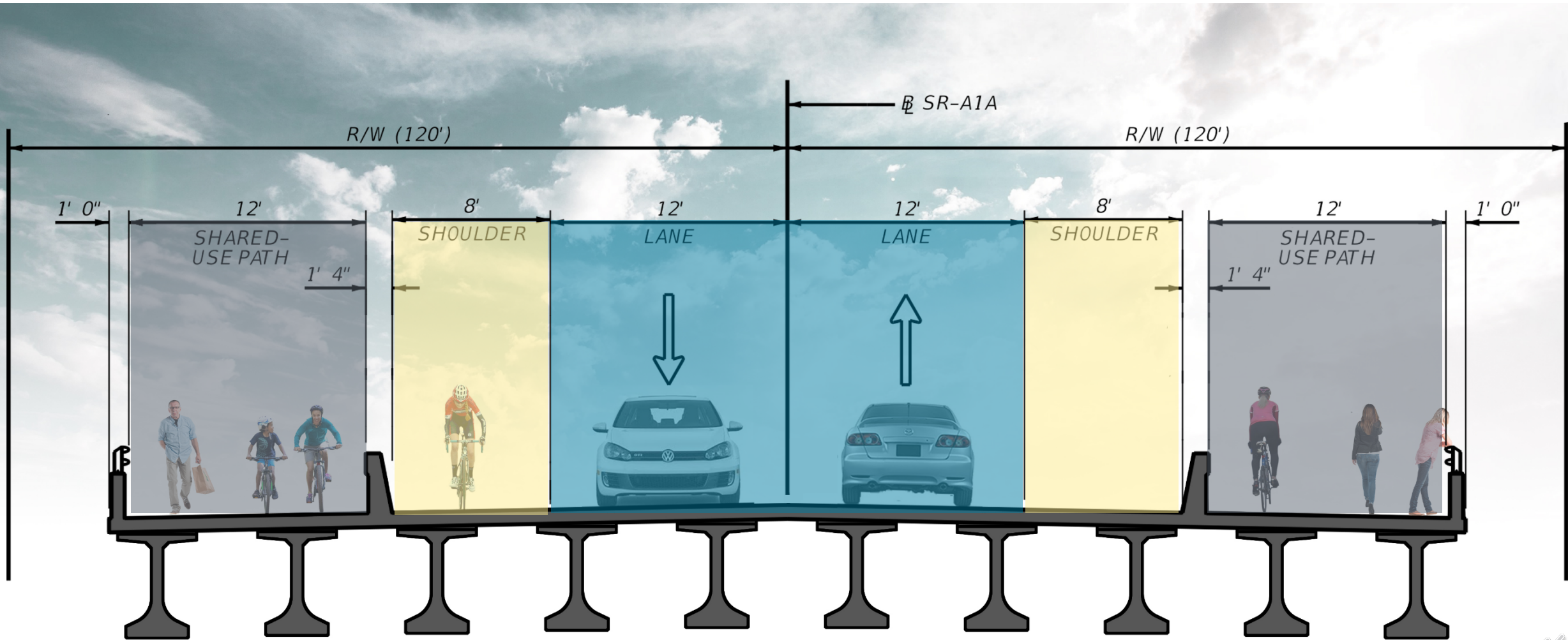
- Meet current FDOT Design Standards
- At minimum, widen bridge deck by adding shoulders and bicycle/pedestrian facilities
- Provide a 75-Year Service Life
- Maintains existing vertical and horizontal clearances
- Maintain traffic during construction
- Minimize impacts to the natural, cultural, and physical environments



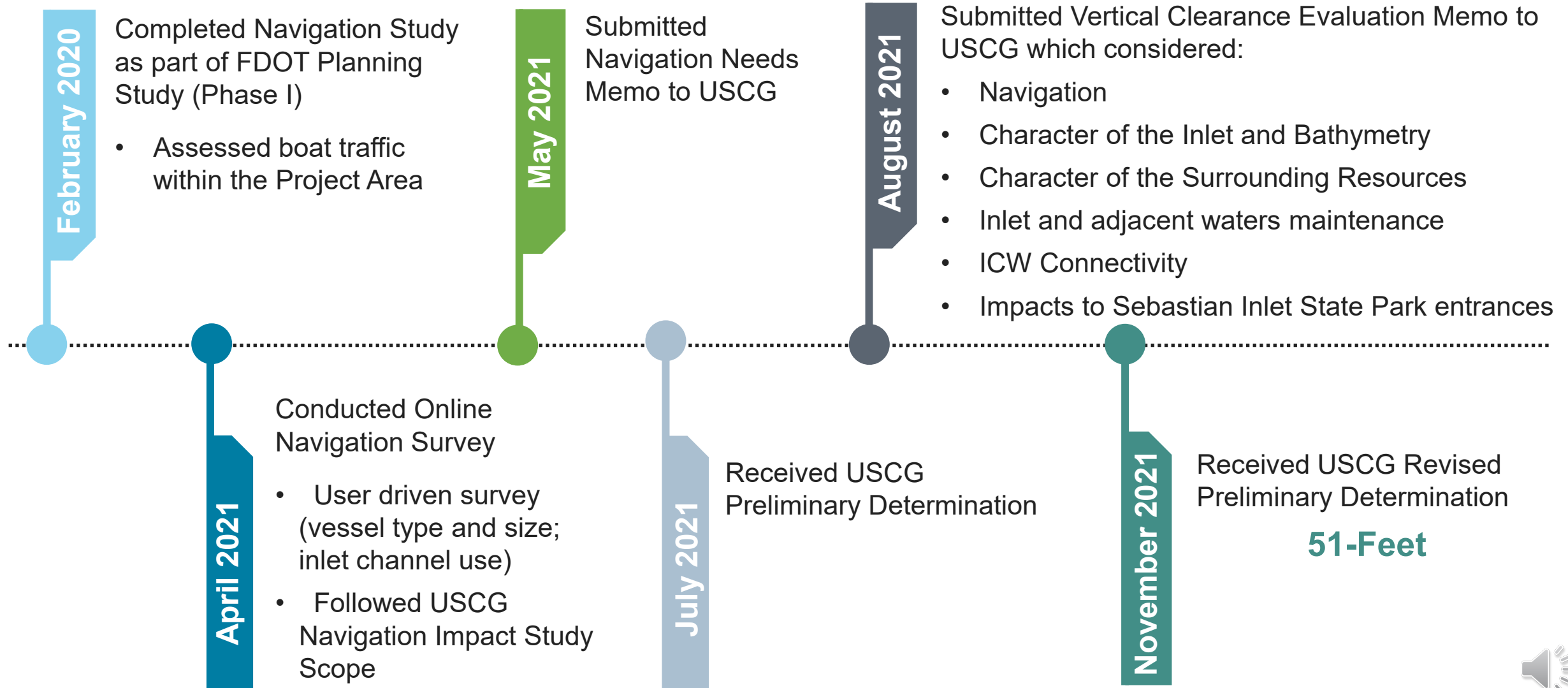
# Engineering Analysis



# Bridge Typical Section



# USCG Coordination



# Vertical Profile Comparison



View Looking Northeast from Southwest Side of Inlet



# Proposed Vertical Profile: 51-Feet



View Looking Northeast from Southwest Side of Inlet





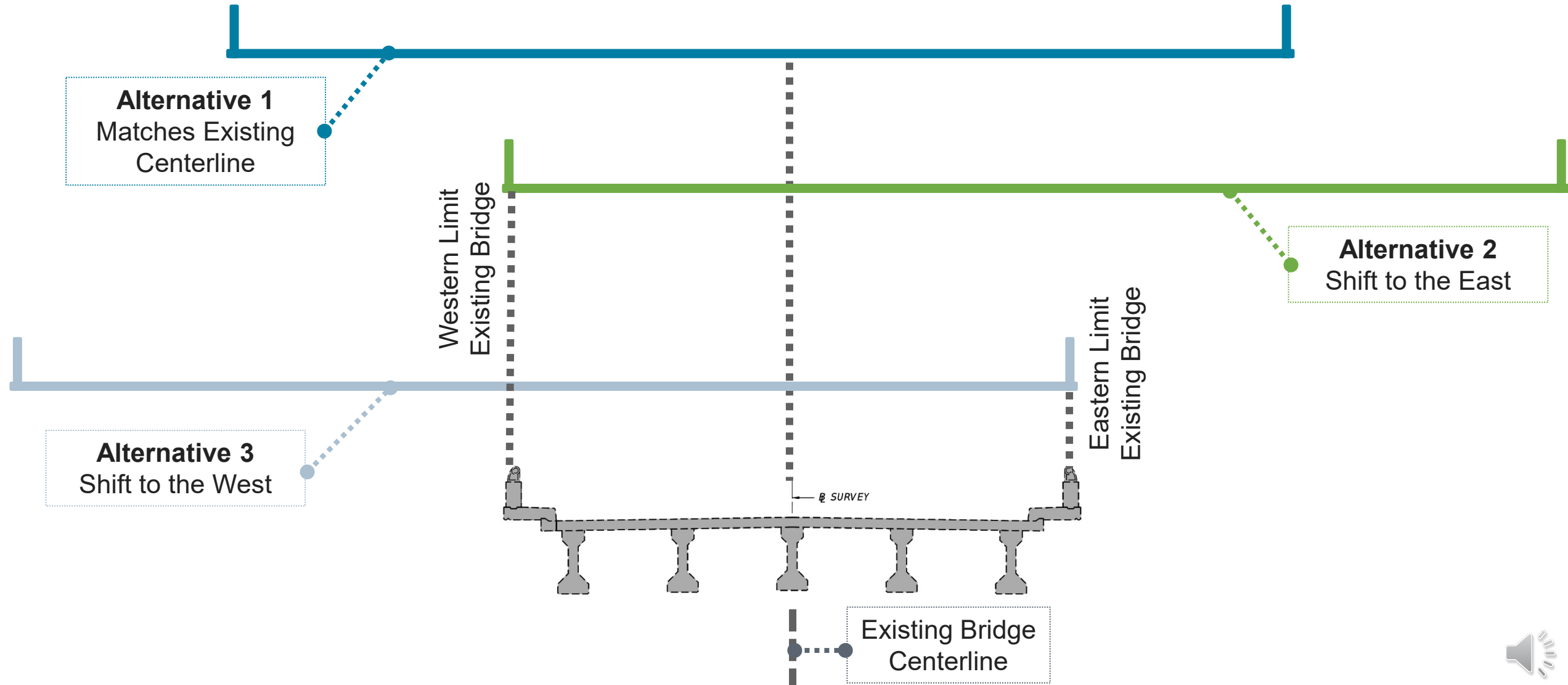
# Proposed Bridge



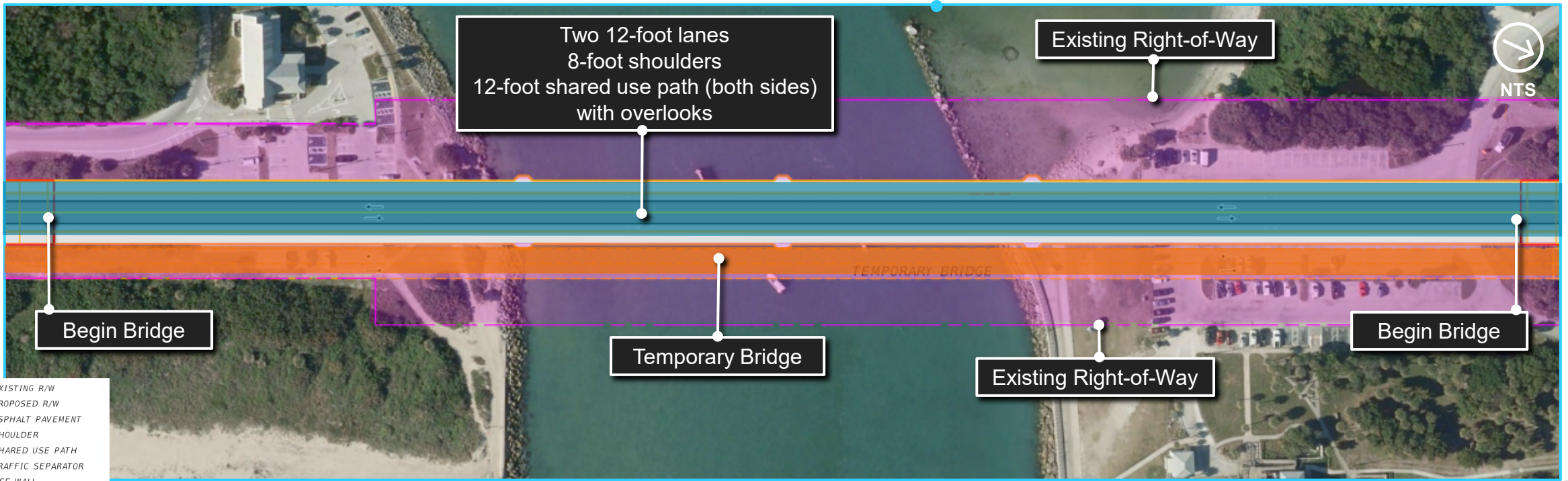
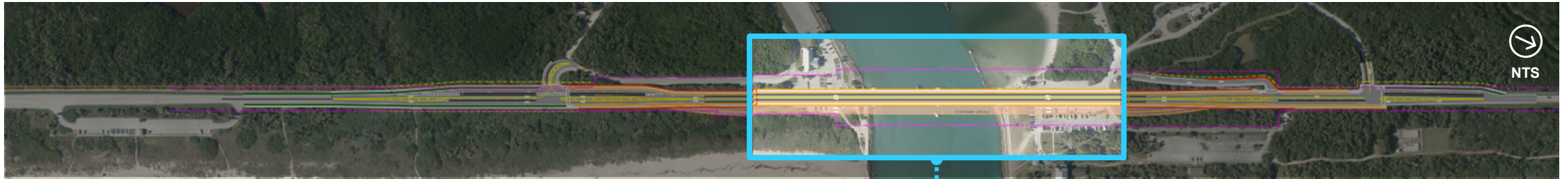
View Looking Northwest from South Side of Inlet



# Alternatives Alignment Comparison



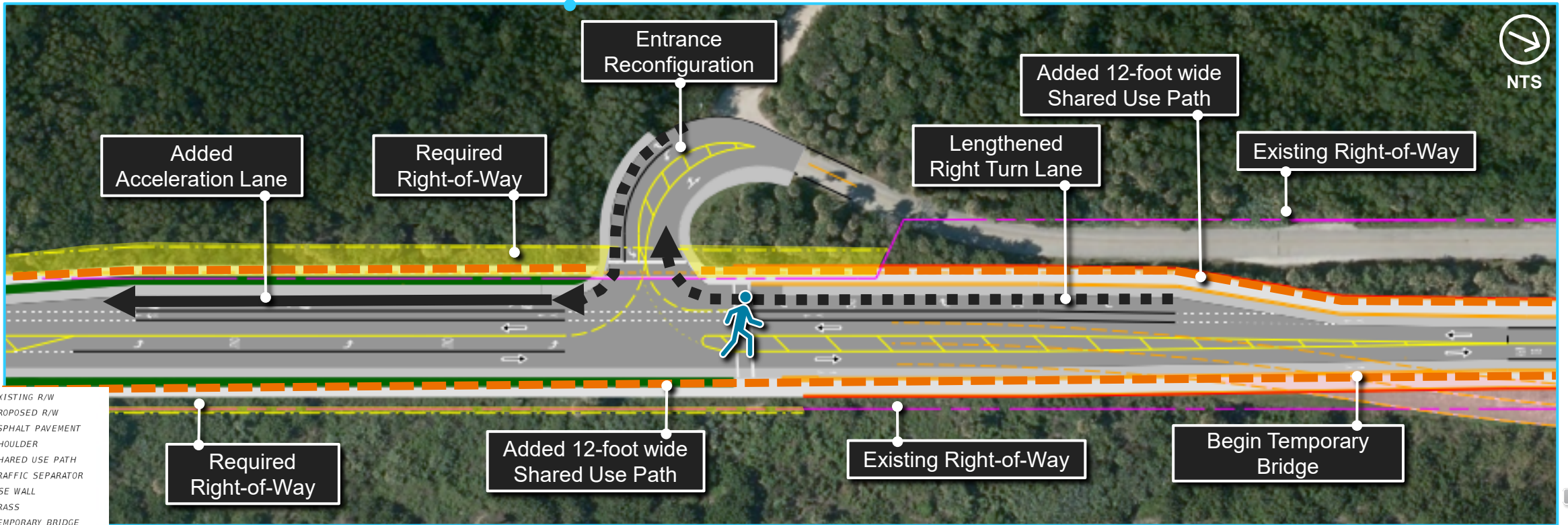
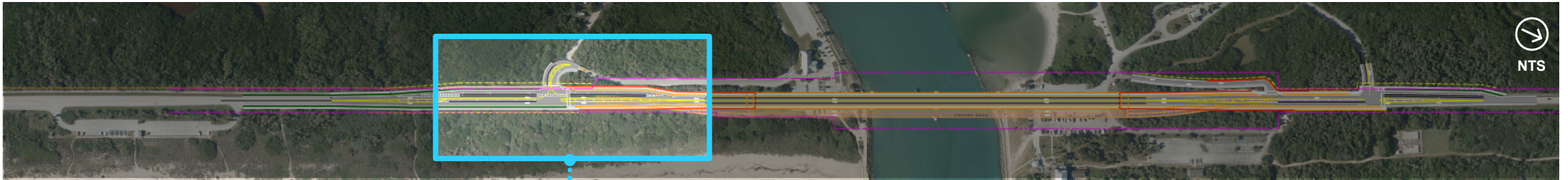
# Alternative 1: Existing Alignment with Temporary Bridge



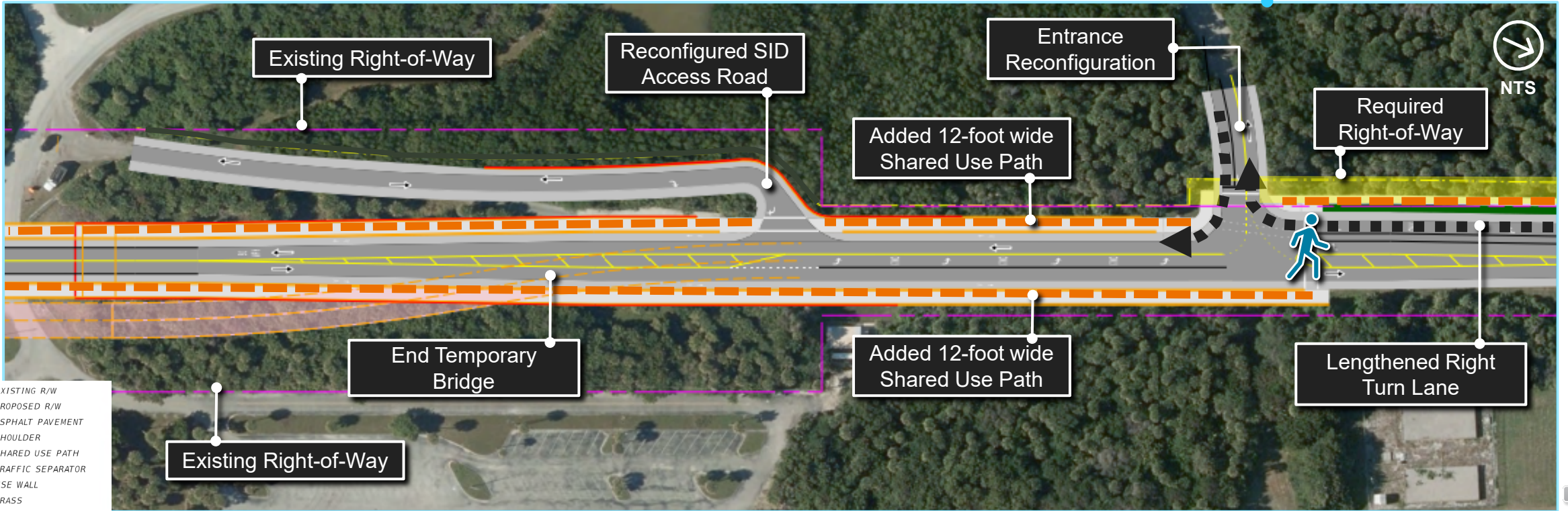
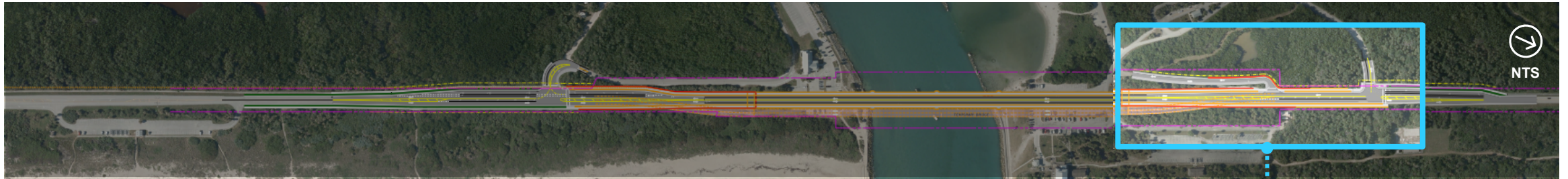
- EXISTING R/W
- PROPOSED R/W
- ASPHALT PAVEMENT
- SHOULDER
- SHARED USE PATH
- TRAFFIC SEPARATOR
- MSE WALL
- GRASS
- TEMPORARY BRIDGE



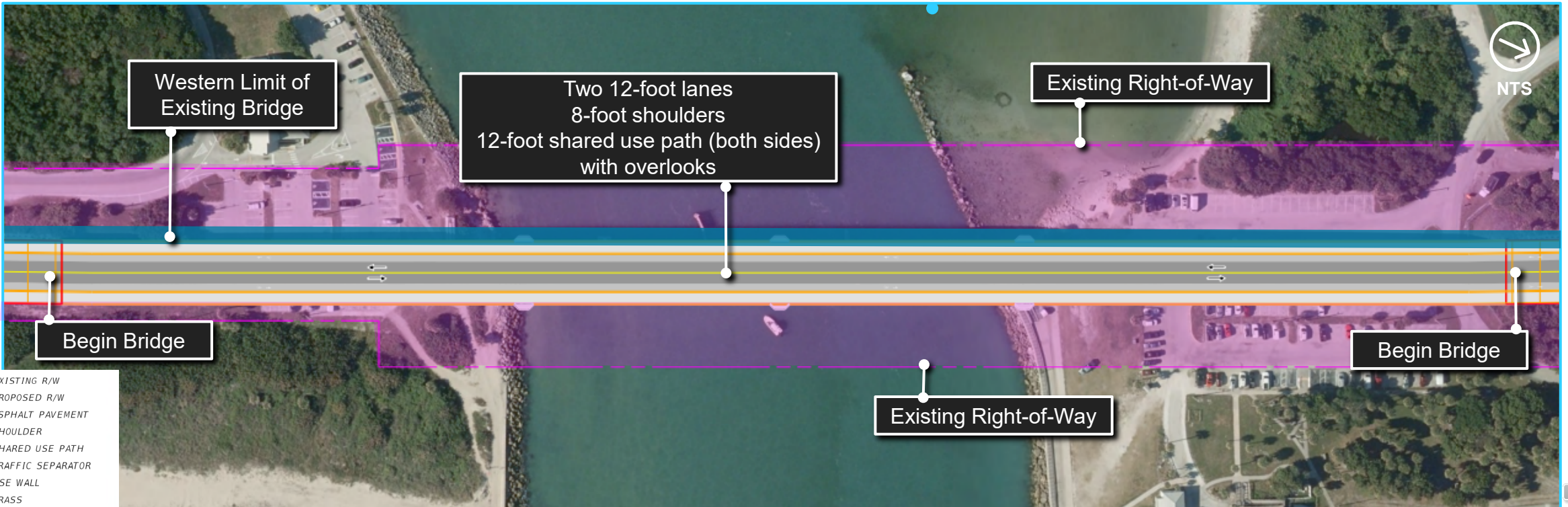
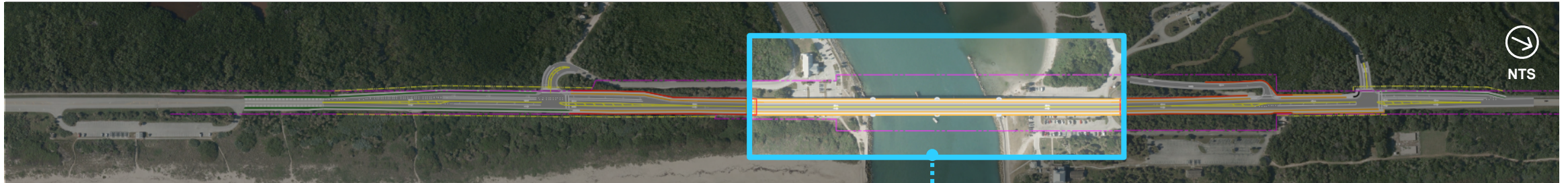
# Alternative 1: Existing Alignment – South Entrance



# Alternative 1: Existing Alignment – North Entrance/SID Access



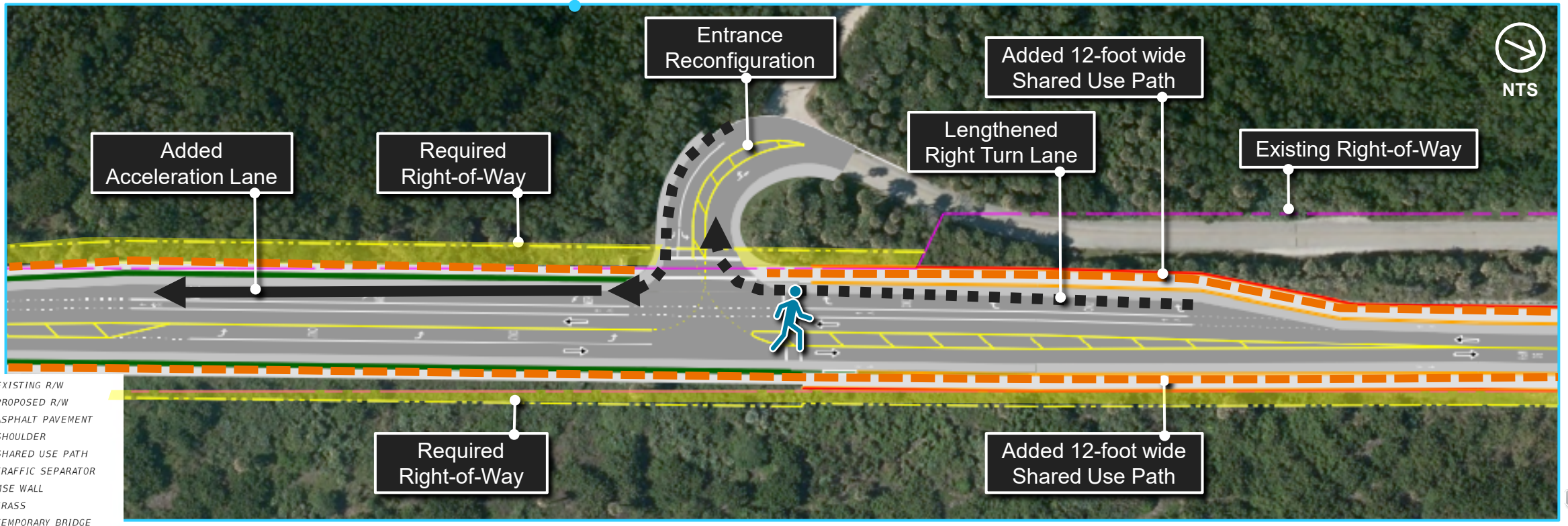
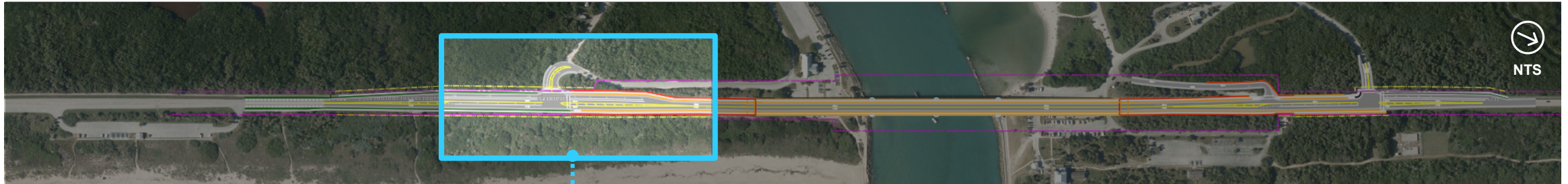
# Alternative 2: East Alignment



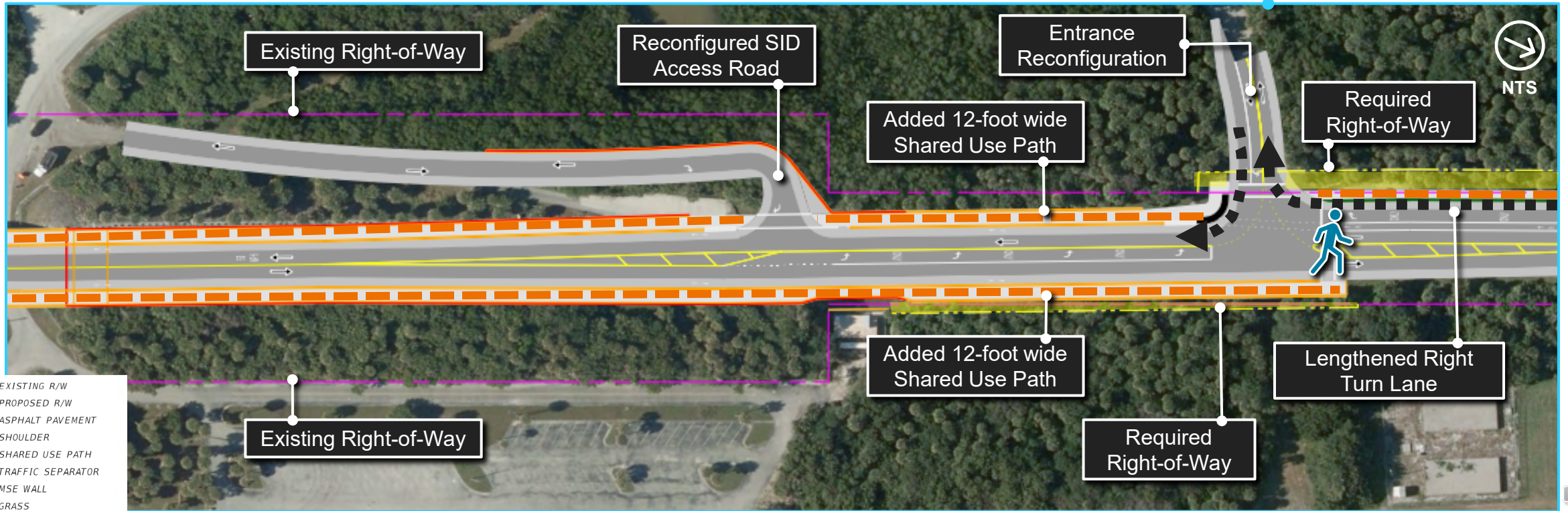
- EXISTING R/W
- PROPOSED R/W
- ASPHALT PAVEMENT
- SHOULDER
- SHARED USE PATH
- TRAFFIC SEPARATOR
- MSE WALL
- GRASS
- TEMPORARY BRIDGE



# Alternative 2: East Alignment – South Entrance



# Alternative 2: East Alignment – North Entrance/SID Access

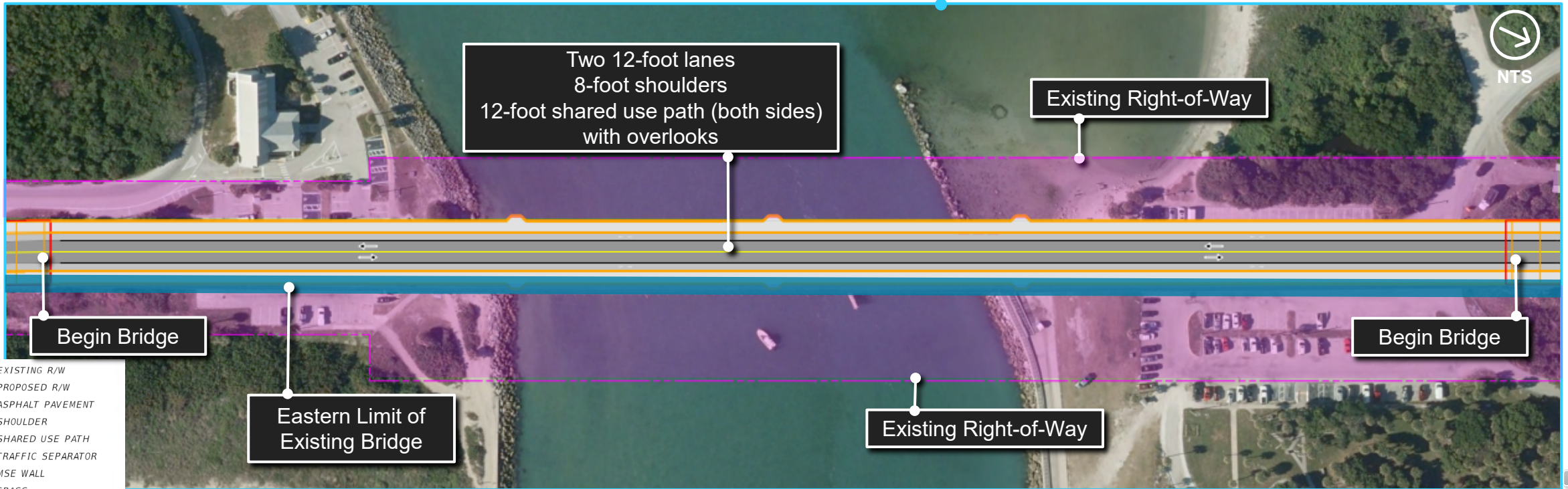
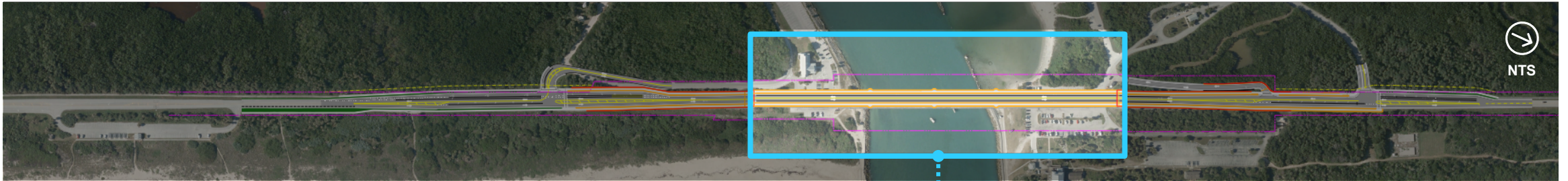


- EXISTING R/W
- PROPOSED R/W
- ASPHALT PAVEMENT
- SHOULDER
- SHARED USE PATH
- TRAFFIC SEPARATOR
- MSE WALL
- GRASS
- TEMPORARY BRIDGE

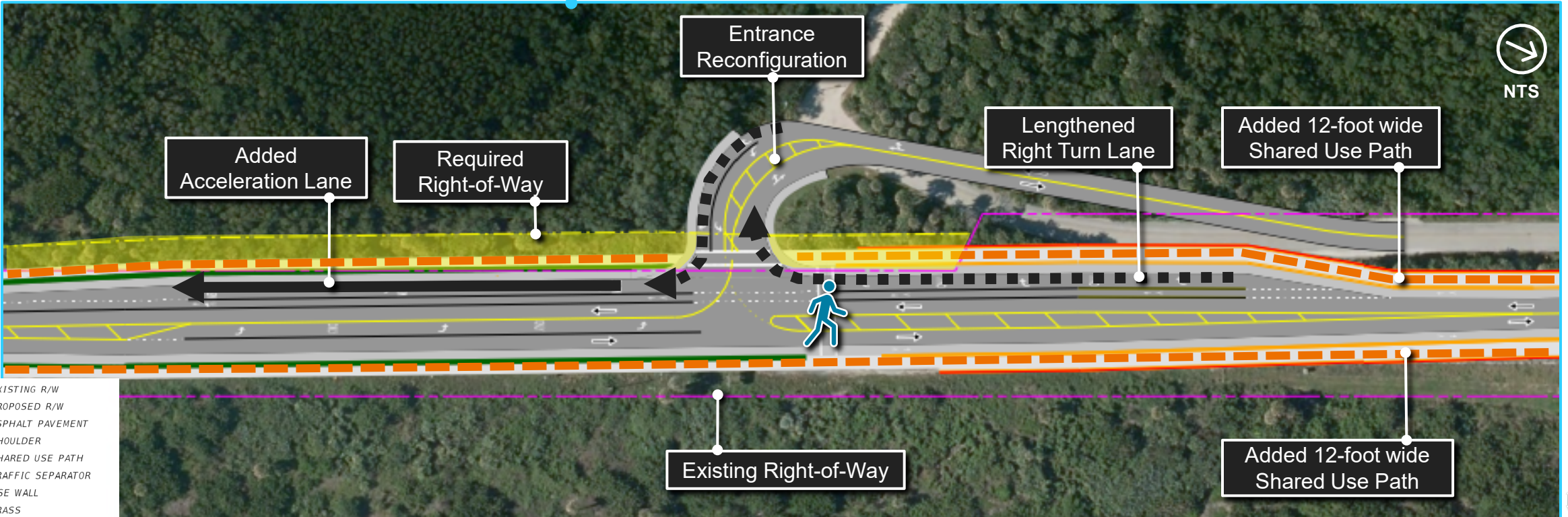
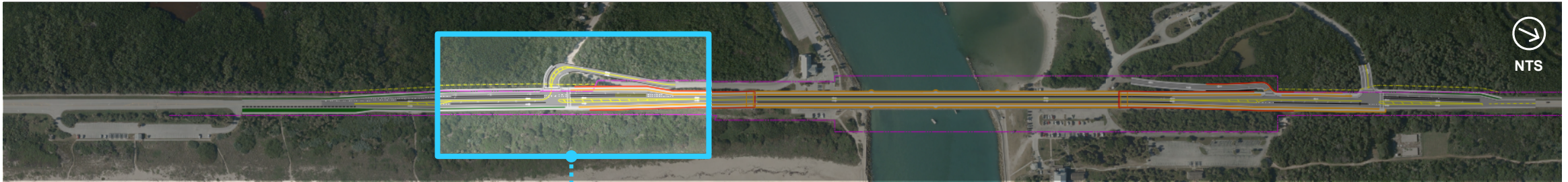




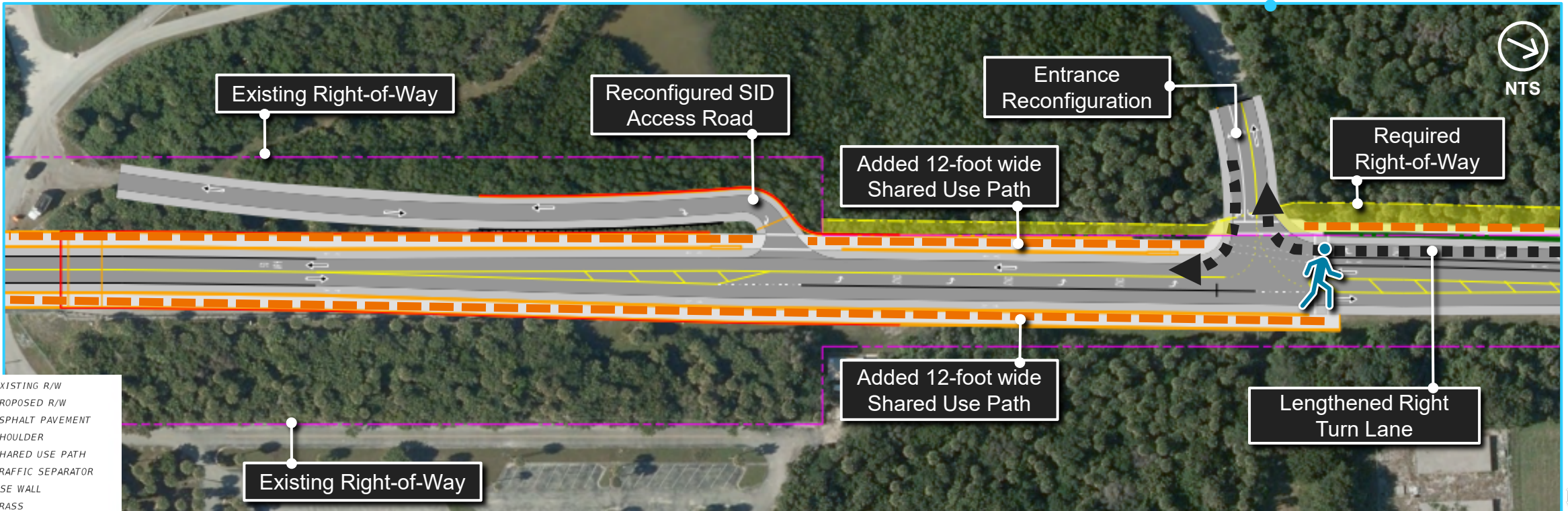
# Alternative 3: West Alignment



# Alternative 3: West Alignment – South Entrance

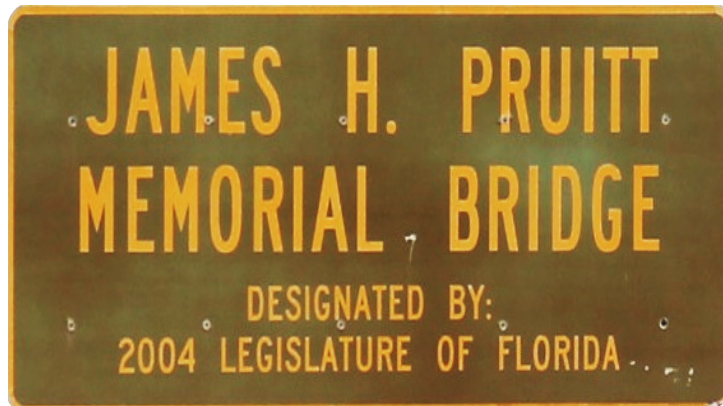


# Alternative 3: West Alignment – North Entrance/SID Access



# Environmental Analysis

## Cultural Resources



## Natural Resources



## Physical Resources





# Cultural Resources

## Section 4(f) Resources

- Project adjacent to Sebastian Inlet State Park
- Alternatives minimize impacts to this resource

## Section 106 Resources

- Bridge is National Register of Historic Places eligible under Criterion C - Engineering
- Cultural Resource Assessment Survey will evaluate effects to resources



# Natural Resources

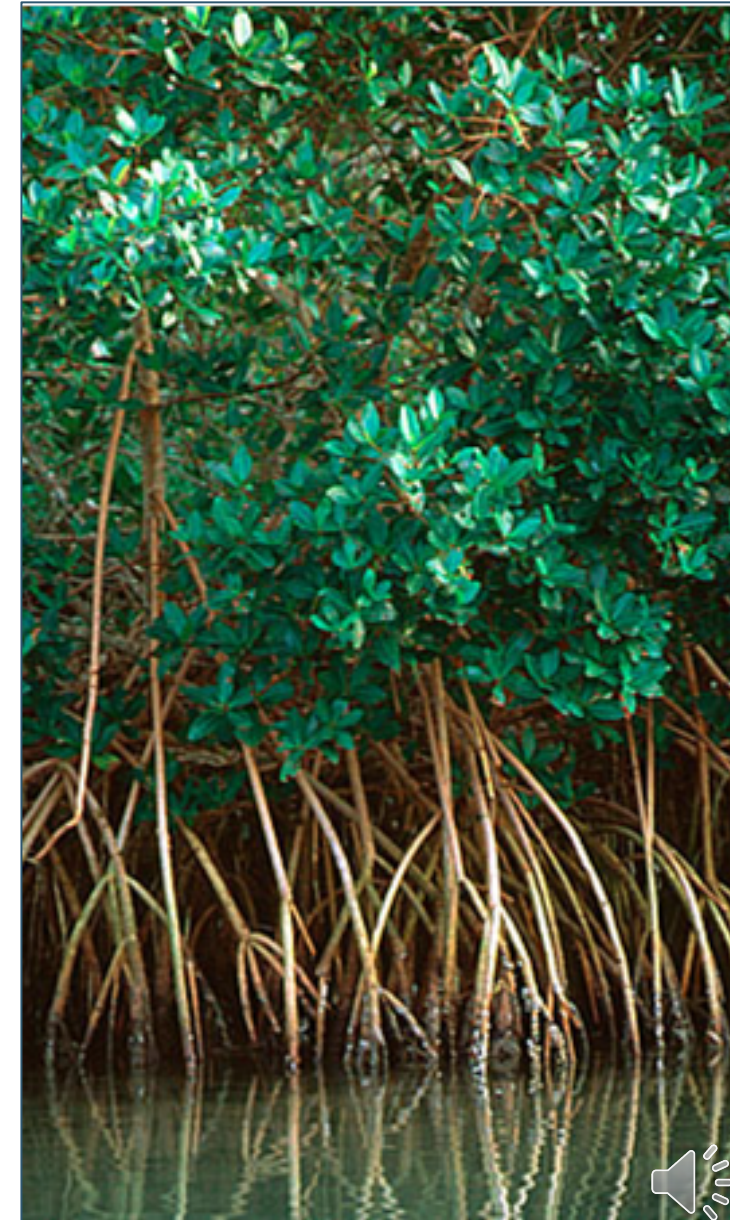
## Completed Natural Resource Surveys

- Wetlands & Surface Waters
- Wildlife & Habitat
  - Sea Turtle
  - Manatee
  - Gopher Tortoise
  - Mangroves

**Alternatives minimize impacts to these resources**

### Inlet is hardbottom

- No Johnson's seagrass present
- No listed coral species
- No other listed benthic species



# Physical Resources



## Noise

### Traffic Noise Analysis to include

- Evaluation of 3 noise sensitive sites
- Evaluation of construction noise analysis



## Contamination

### Asbestos

- No asbestos containing materials identified (2020 Asbestos Survey)
- Investigation for lead-based paint will be completed during the Design Phase

### Other Contamination

- None anticipated



## EVALUATION MATRIX

Criteria/Category		No Build Alternative	Rehabilitation Alternative	Alternative 1 (Existing)	Alternative 2 (East)	Alternative 3 (West)
<b>BRIDGE</b>	Vertical Navigational Clearance above Mean High Water	39-feet	39-feet	51-feet	51-feet	51-feet
	Horizontal Navigational Clearance Between Fenders	150-feet	150-feet	150-feet	150-feet	150-feet
	Benefit to Marine Traffic	No Change	No Change	Yes	Yes	Yes
	Temporary Bridge Required	N/A	No	Yes	No	No
	Bridge Closure or Detour During Construction	N/A	No	No	No	No
	Life of Alternative (Estimated Years) <sup>1</sup>	5	15	75	75	75
<b>TRAFFIC OPERATIONS</b>	Benefit to Vehicular Traffic	No	No	Yes	Yes	Yes
	Evacuation / Emergency Response (Improved)	No	No	Yes	Yes	Yes
	Sebastian Inlet State Park North Entrance (Improved)	No	No	Yes	Yes	Yes
	Sebastian Inlet State Park South Entrance (Improved)	No	No	Yes	Yes	Yes
	Sebastian Inlet District North Access Road (Improved)	No	No	Yes	Yes	Yes
<b>NATURAL RESOURCES</b>	Impacts to Wetlands (Acres)	0	0	3.07	3.18	3.2
	Impacts to Surface Waters (Acres)	No Change	2.73	2.73	2.73	2.73
	Impacts to Essential Fish Habitat - Benthic Resources (Acres)	0	0	0	0	0
<b>SOCIAL &amp; CULTURAL RESOURCES</b>	Impacts to Section 4(f) Resources (Park) (Acres)	No	No	2.98	3.26	3.81
	Potentially Eligible Archaeological Resources (Number)	0	0	1	0	1
	Eligible Historic Resources (Number)	0	1	1	1	1
	Bicycle and Pedestrian Facilities	No	No	Yes	Yes	Yes
<b>PHYSICAL RESOURCES</b>	Noise Receptors Impacted	0	0	0	0	1
	Contamination Sites <sup>2</sup>	0	0	0	0	0
	Aesthetics / Visual Changes	No	Yes	Yes	Yes	Yes
<b>RIGHT-OF-WAY</b>	Additional Right-of-Way Required (Acres)	0	0	4.51 *	3	3.26
	* Includes Temporary Bridge					
<b>COSTS (Dollars)</b>	Design	0	1,479,295	6,656,822	5,917,175	5,917,175
	Bridge and Roadway Construction	0	3,553,560 <sup>3</sup>	47,376,210	47,532,207	47,532,207
	Temporary Bridge Construction	0	0	6,906,605	0	0
	Mitigation	0	TBD	TBD	TBD	TBD
<b>TOTAL COST</b>		<b>0</b>	<b>5,032,855</b>	<b>60,939,637</b>	<b>53,449,382</b>	<b>53,449,382</b>

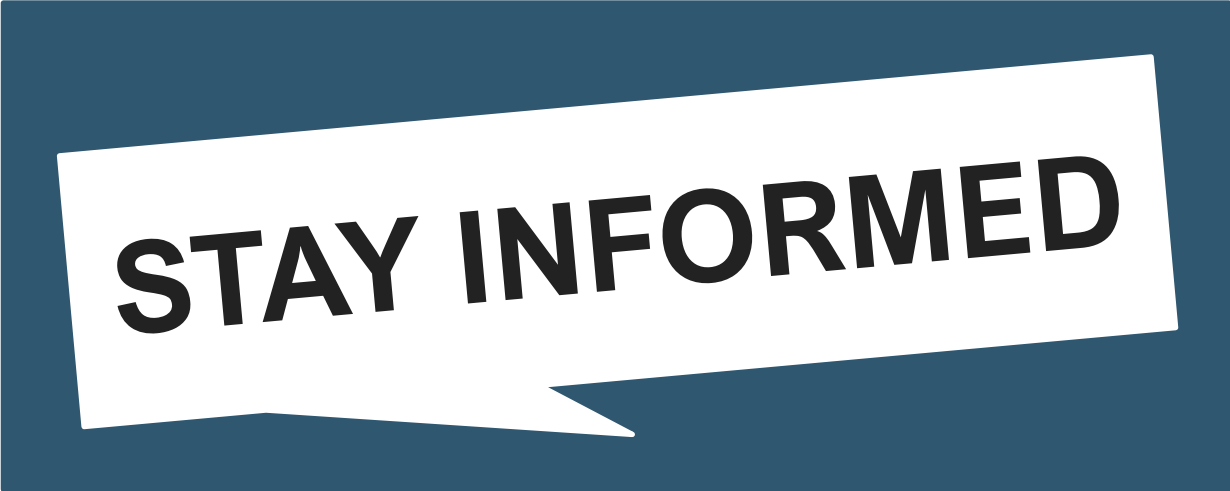
<sup>1</sup> FDOT policy states a structurally deficient bridge must be replaced within 6 years.

<sup>2</sup> Bridge will be evaluated for asbestos, lead paint during design.

<sup>3</sup> Bridge rehabilitation does not meet the project Purpose and Need. Construction costs include repairs to the superstructure and substructure and stabilization of foundation only.







### Social Media



Facebook: [MyFDOTSEFL](#)

Instagram: [myfdot\\_sefl](#)

Twitter: [@MyFDOT\\_SEFL](#)

[www.fdot.gov/projects/SebastianInletBridge](http://www.fdot.gov/projects/SebastianInletBridge)

## Opportunities for public involvement:

### Public Kickoff Meeting

- Virtual: May 11, 2021

### Alternatives Public Workshop

- Virtual: January 11, 2022
- In-person: January 13, 2022

### Public Hearing

- Fall 2022

### Additional opportunities provided throughout the PD&E Study

Public comments and questions are welcomed at any time throughout the study and may be submitted online at the project website or by email or U.S. mail to the Project Manager

# Public Comment Period

## Submitting Comments or Questions



### Online Attendees

1. Type in **Question** pane on the **Control Panel**
2. During the verbal comment period :
  - Click the **Raise Hand** button on the **Control Panel**
  - Unmute your microphone when your name is called

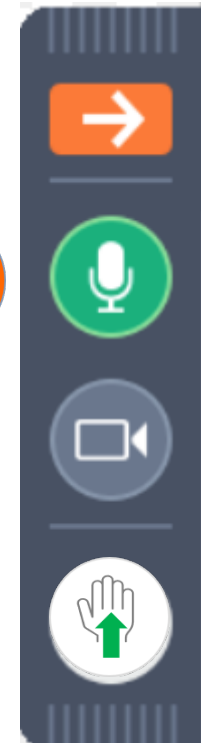
On upper left of  
GoToWebinar  
Control Panel



**Unmute  
(green)**



**Raise  
Hand  
button**



### Dial-in Attendees

1. During the verbal comment period :
  - Click the **Raise Hand** button on your **Smart Phone**
  - Unmute your microphone when your name is called



# Thank You for Attending!

Alternatives Public Workshop

Please complete our **exit survey**

The exit survey will appear upon leaving GoToWebinar.

## SR-A1A over Sebastian Inlet

Bridge 880005

Bridge Replacement

**Project Development and  
Environment (PD&E) Study**

[www.fdot.gov/projects/SebastianInletBridge](http://www.fdot.gov/projects/SebastianInletBridge)