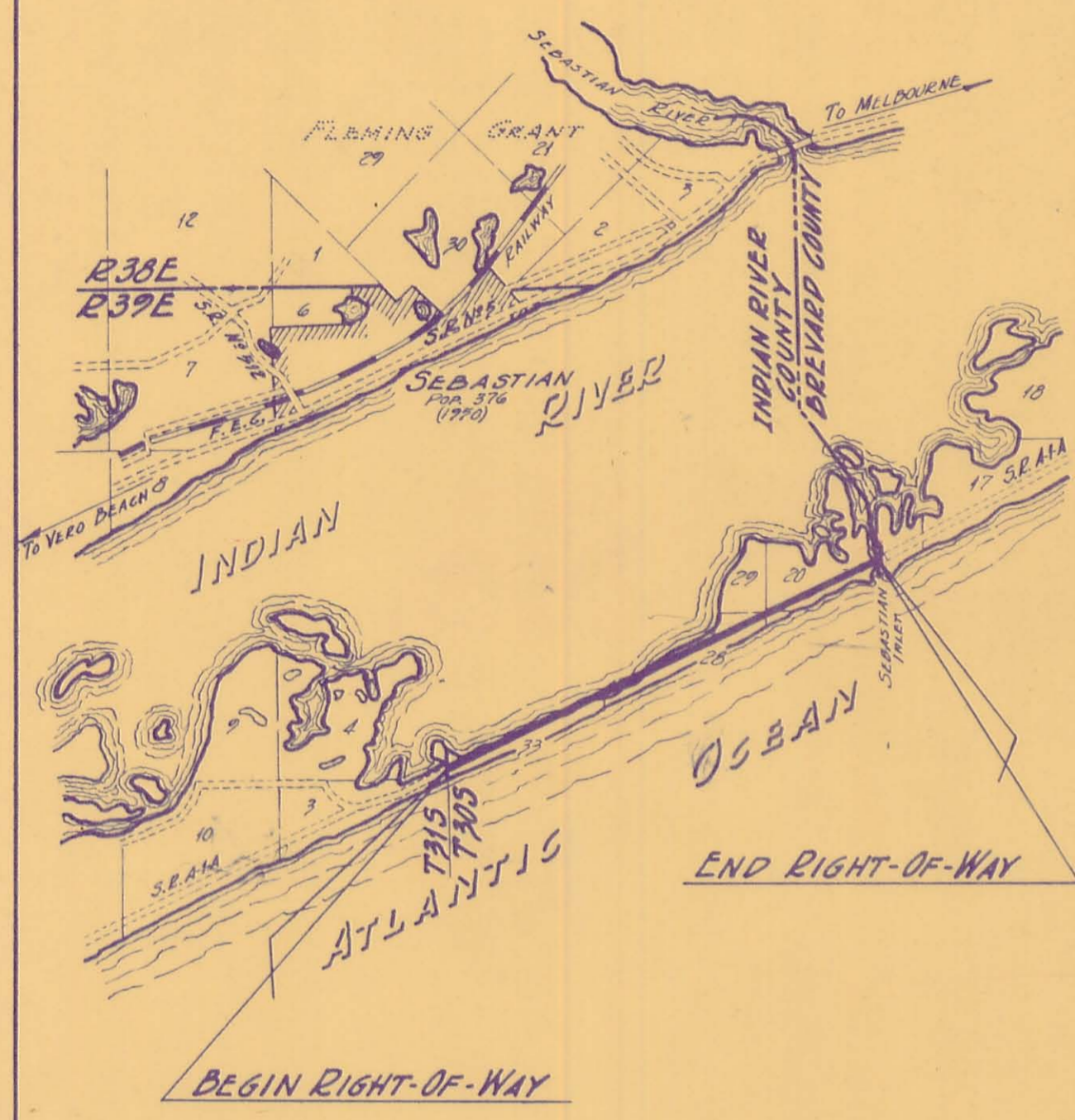
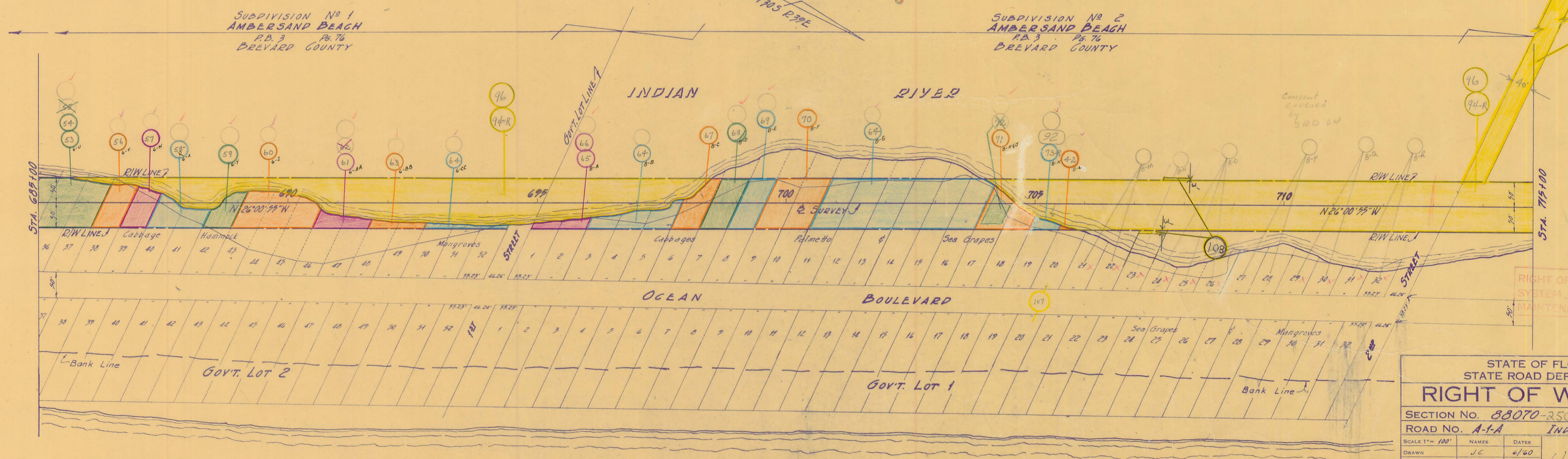
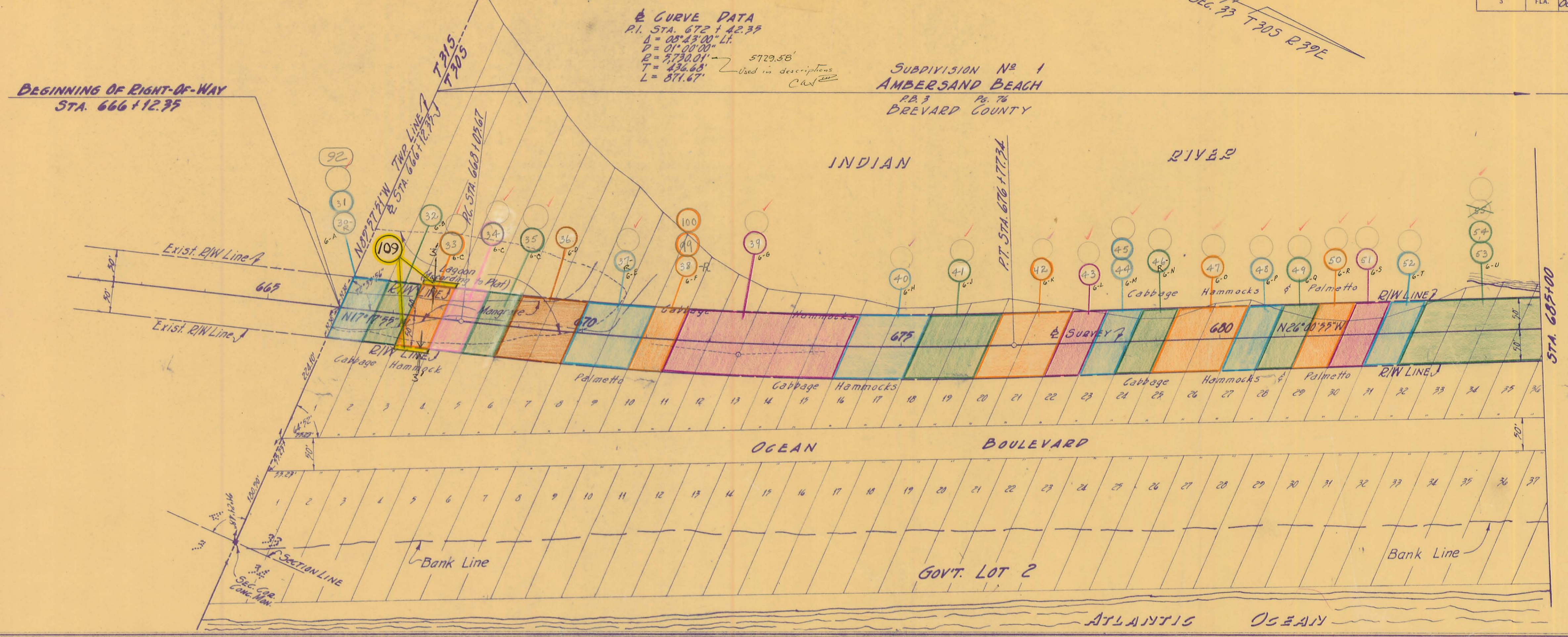


APPENDIX G

Existing Right-of-Way Maps



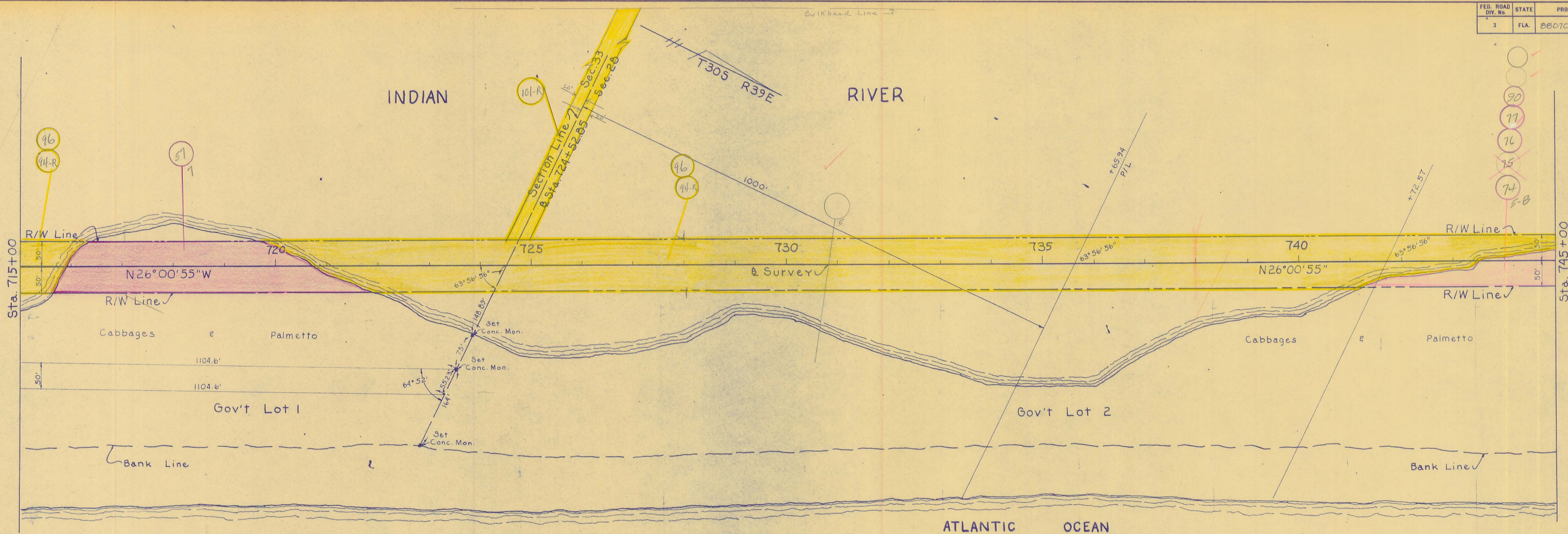
LOCATION MAP
Scale: 1" = 1 Mile



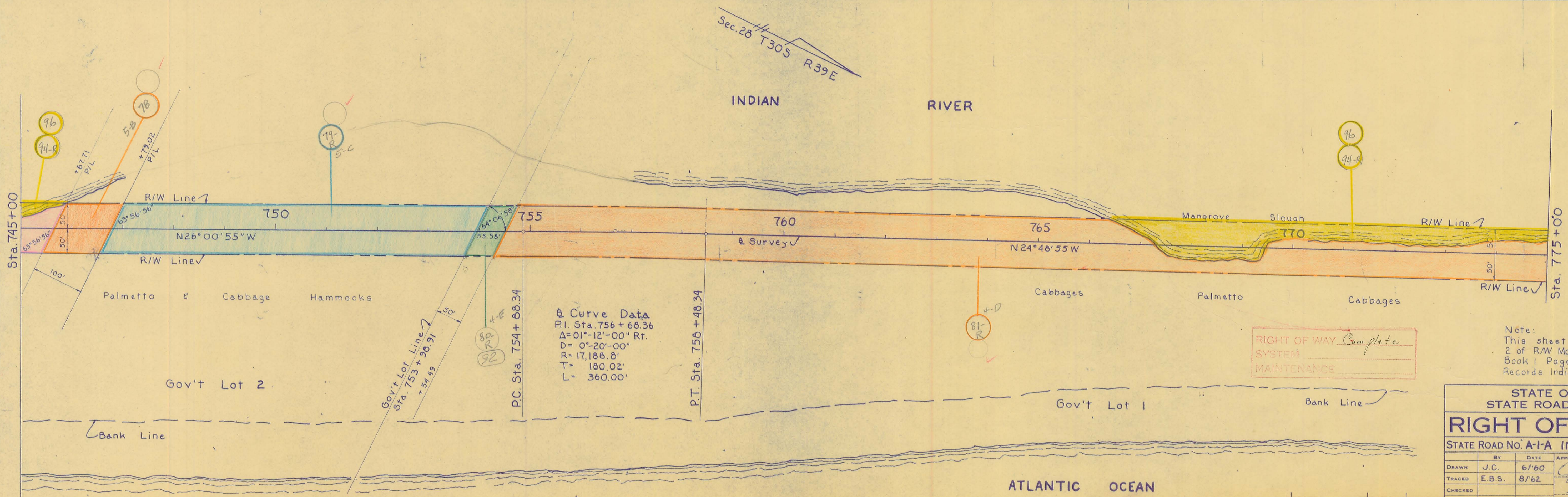
RIGHT OF WAY Complete
 SYSTEM
 MAINTENANCE

STATE OF FLORIDA STATE ROAD DEPARTMENT		
RIGHT OF WAY MAP		
SECTION No. 88070-2501 Plot 1 of 3		
ROAD No. A-1A INDIAN RIVER COUNTY		
SCALE 1" = 100'	NAMES	DATE
DRAWN J.C.		6/60
TRACED G.V.M.		6/60
INDEXED		
REVISED		
APPROVED BY	A.C. Church	

No.	REVISION	By	DATE



- 90
- 77
- 76
- 75
- 74
- 5-B



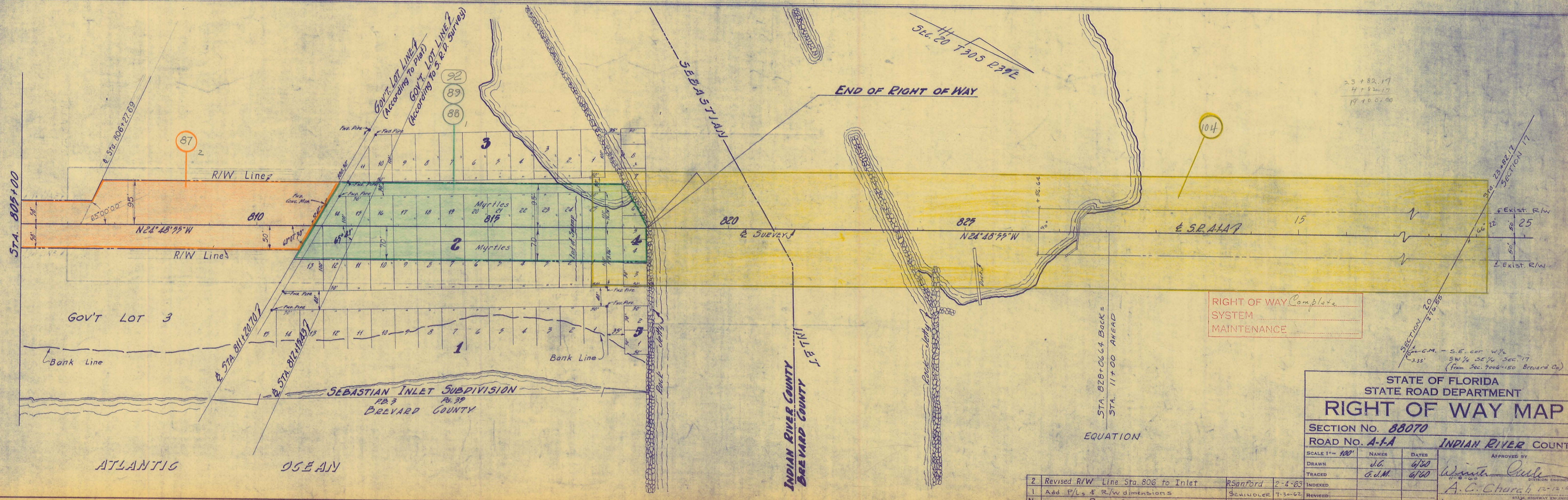
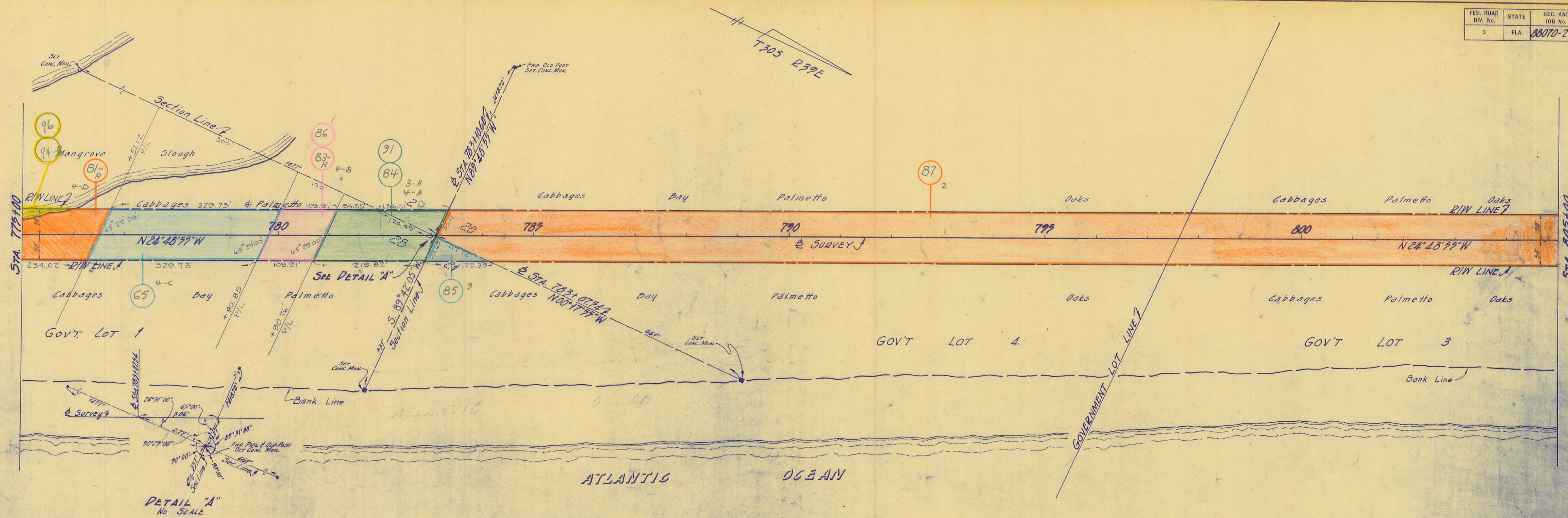
Curve Data
 P.I. Sta. 756 + 68.36
 $\Delta = 01^{\circ}12'00''$ Rt.
 $D = 0^{\circ}20'00''$
 $R = 17,188.8'$
 $T = 180.02'$
 $L = 360.00'$

RIGHT OF WAY Complete
 SYSTEM
 MAINTENANCE

Note:
 This sheet supercedes sheet
 2 of R/W Map as filed in Map
 Book 1 Page 49 of the Public
 Records Indian River County Florida

STATE OF FLORIDA STATE ROAD DEPARTMENT	
RIGHT OF WAY MAP	
STATE ROAD NO. A-1-A INDIAN RIVER COUNTY	
BY	DATE
APPROVED BY	DATE
DRAWN	J.C. 6/60
TRACED	E.B.S. 8/62
CHECKED	
COMPARED	
INDEXED	
REVISION	BY DATE

FED. ROAD DIV. No.	STATE	SEC. AND JOB No.	FISCAL YEAR	SHEET No.	TOTAL SHEETS
3	FLA.	88070-2501	'61	3	3



STATE OF FLORIDA
STATE ROAD DEPARTMENT

RIGHT OF WAY MAP

SECTION No. 88070
ROAD No. A-1-A
INDIAN RIVER COUNTY

SCALE 1" = 100'	NAMES	DATE	APPROVED BY
DRAWN	J.G.	6/60	<i>[Signature]</i>
TRACED	G.M.M.	6/60	
INDEXED			A.C. Church 12-12-60
REVISION			STATE HIGHWAY ENGINEER

88070-2501 3-

No.	REVISION	BY	DATE
2	Revised R/W Line Sta. 806 to Inlet	R Sanford	2-4-63
1	Add P/Ls & R/W dimensions	Scudder	7-3-62