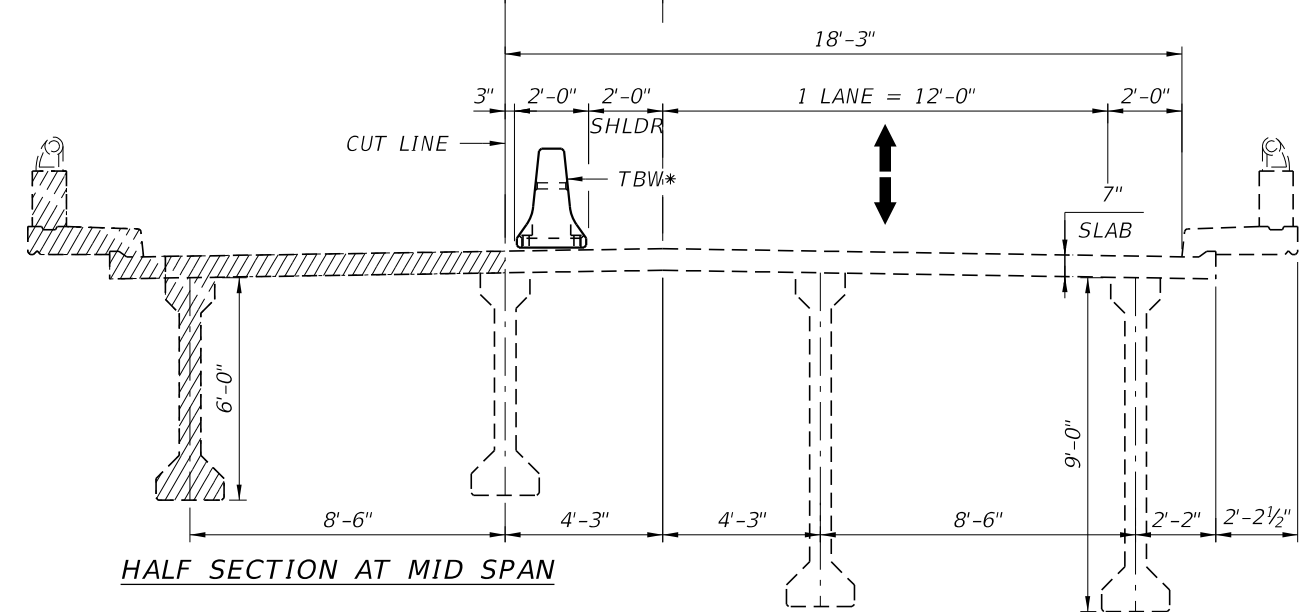
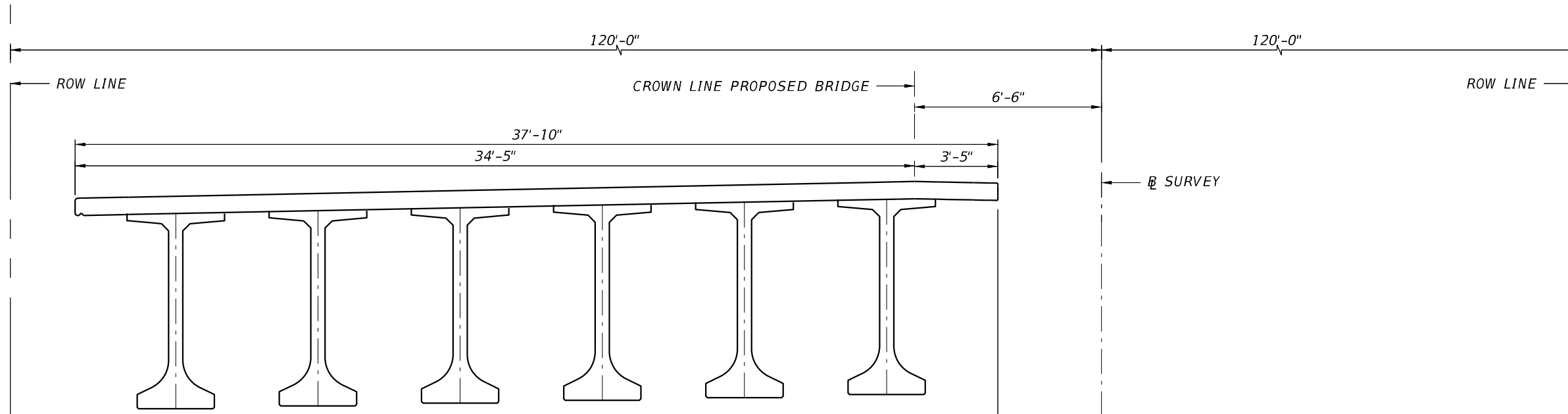


APPENDIX B

Bridge Sequence of Construction

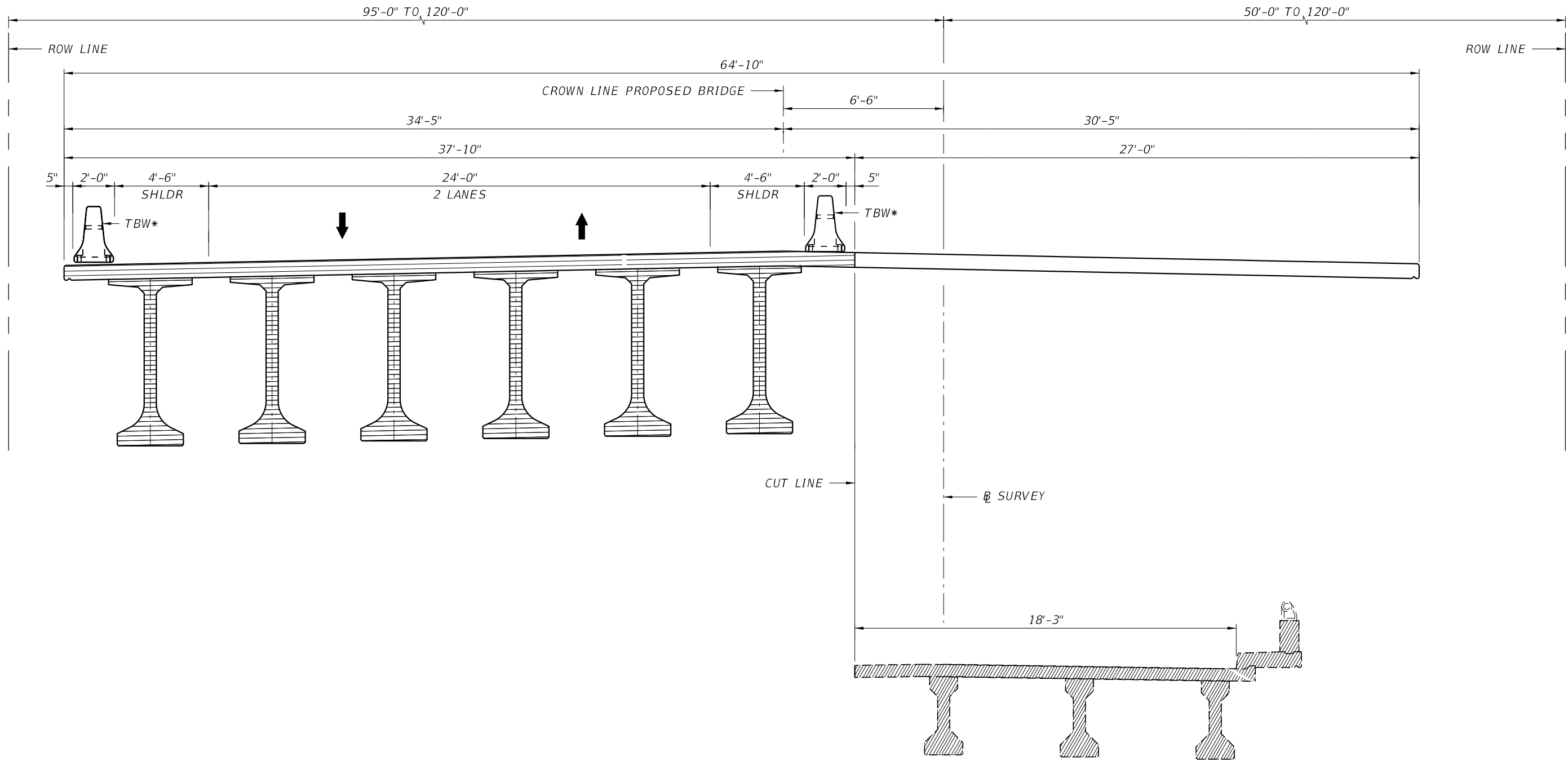


PHASE I
(SPANS 9 THRU 11)

- LEGEND:**
- EXISTING STRUCTURE
 - EXISTING STRUCTURE TO BE REMOVED
 - PROPOSED STRUCTURE
 - TBW* TEMP. BARRIER WALL
BOLTED, INDEX 102-110

OPTION NO. 1

REVISIONS						SOHEILA SADOUGH, P.E. P.E. LICENSE NUMBER 44130 ASA CONSULTANTS, INC. 510 SHOTGUN ROAD, SUITE 402 SUNRISE, FL. 33326	DRAWN BY: CMR 01-20 CHECKED BY: SS 01-20 DESIGNED BY: SS 01-20 CHECKED BY: CMR 01-20	STATE OF FLORIDA DEPARTMENT OF TRANSPORTATION			SHEET TITLE: CONSTRUCTION SEQUENCE (2 OF 4)	REF. DWG. NO.
DATE	BY	DESCRIPTION	DATE	BY	DESCRIPTION			ROAD NO.	COUNTY	FINANCIAL PROJECT ID		
							A1A	BREVARD INDIAN RIVER		SEBASTIAN INLET BRIDGE	B-2	



PHASE II
(SPANS 1 THRU 8 AND 12 THRU 19)

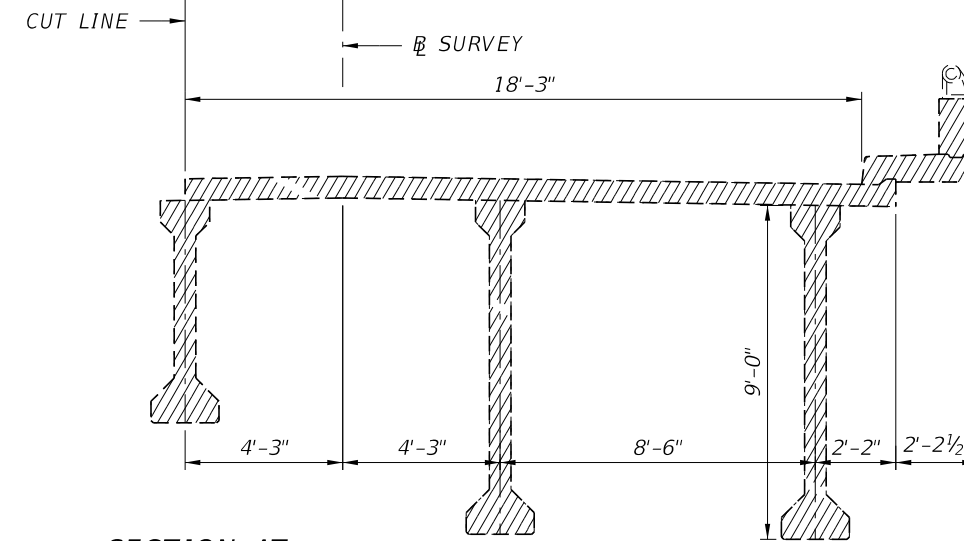
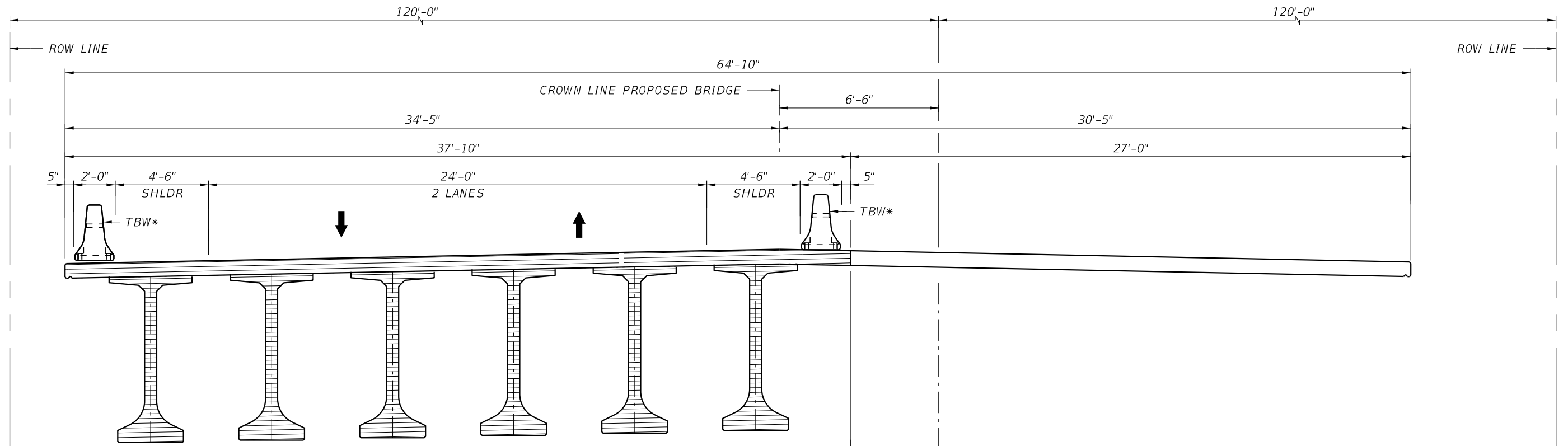
LEGEND:

- [---] EXISTING STRUCTURE
- [////] EXISTING STRUCTURE TO BE REMOVED
- [] PROPOSED STRUCTURE
- [] PROPOSED STRUCTURE BUILT IN PHASE I

TBW* TEMP. BARRIER WALL
BOLTED, INDEX 102-110

OPTION NO. 1

REVISIONS						SOHEILA SADOUGH, P.E. P.E. LICENSE NUMBER 44130 ASA CONSULTANTS, INC. 510 SHOTGUN ROAD, SUITE 402 SUNRISE, FL. 33326	DRAWN BY: CMR 01-20 CHECKED BY: SS 01-20 DESIGNED BY: SS 01-20 CHECKED BY: CMR 01-20	STATE OF FLORIDA DEPARTMENT OF TRANSPORTATION			SHEET TITLE: CONSTRUCTION SEQUENCE (3 OF 4)	REF. DWG. NO.
DATE	BY	DESCRIPTION	DATE	BY	DESCRIPTION			ROAD NO.	COUNTY	FINANCIAL PROJECT ID		
						A1A	BREVARD INDIAN RIVER		SEBASTIAN INLET BRIDGE	B-3		



SECTION AT MID SPAN
 HALF SECTION AT PIERS 10 & 11

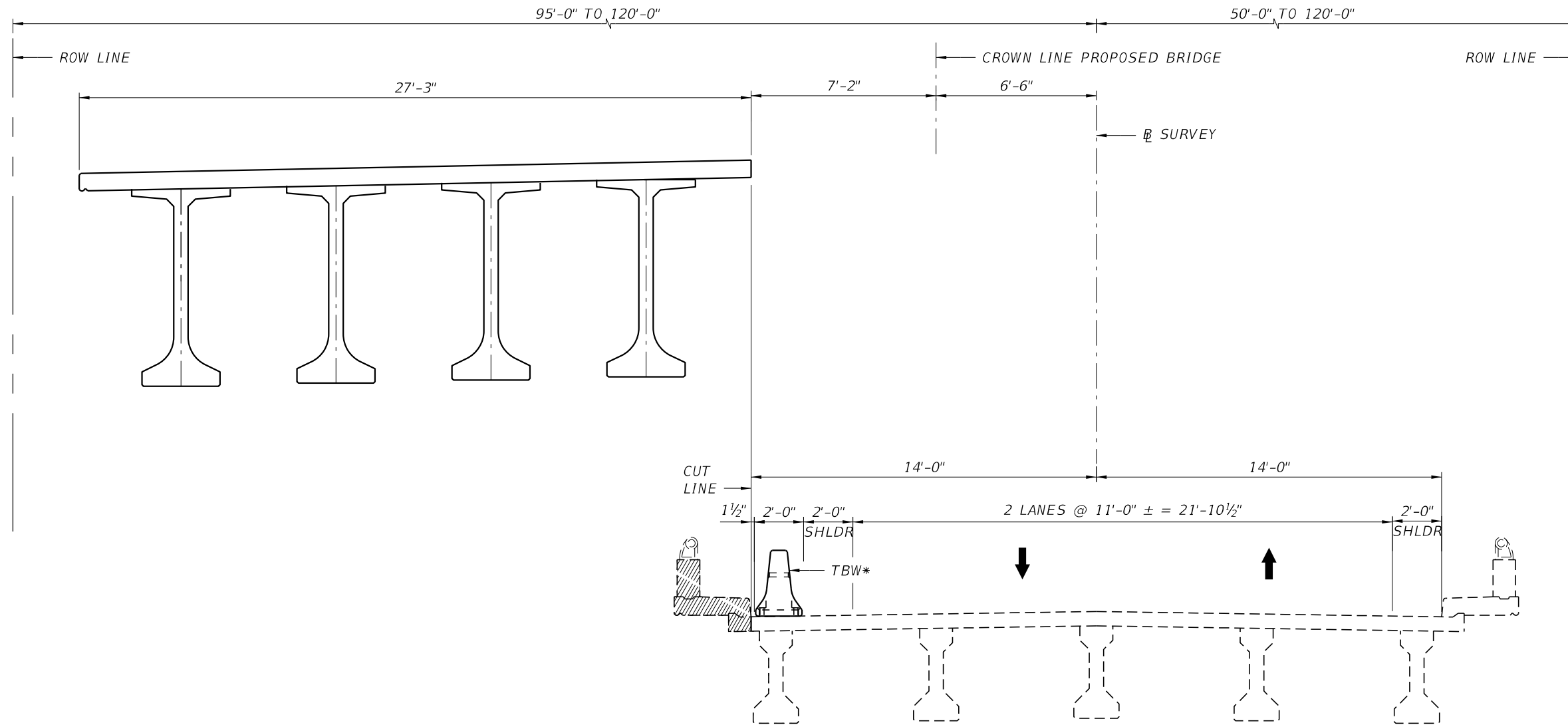
PHASE II
 (SPANS 9 THRU 11)

LEGEND:

- EXISTING STRUCTURE
- EXISTING STRUCTURE TO BE REMOVED
- PROPOSED STRUCTURE
- PROPOSED STRUCTURE BUILT IN PHASE I
- TBW* TEMP. BARRIER WALL
 BOLTED, INDEX 102-110

OPTION NO. 1

REVISIONS						SOHEILA SADOUGH, P.E. P.E. LICENSE NUMBER 44130 ASA CONSULTANTS, INC. 510 SHOTGUN ROAD, SUITE 402 SUNRISE, FL. 33326	DRAWN BY: CMR 01-20 CHECKED BY: SS 01-20 DESIGNED BY: SS 01-20 CHECKED BY: CMR 01-20	STATE OF FLORIDA DEPARTMENT OF TRANSPORTATION			SHEET TITLE: CONSTRUCTION SEQUENCE (4 OF 4)		REF. DWG. NO.
DATE	BY	DESCRIPTION	DATE	BY	DESCRIPTION			ROAD NO.	COUNTY	FINANCIAL PROJECT ID	PROJECT NAME: SEBASTIAN INLET BRIDGE		SHEET NO.
						A1A	BREVARD INDIAN RIVER				B-4		



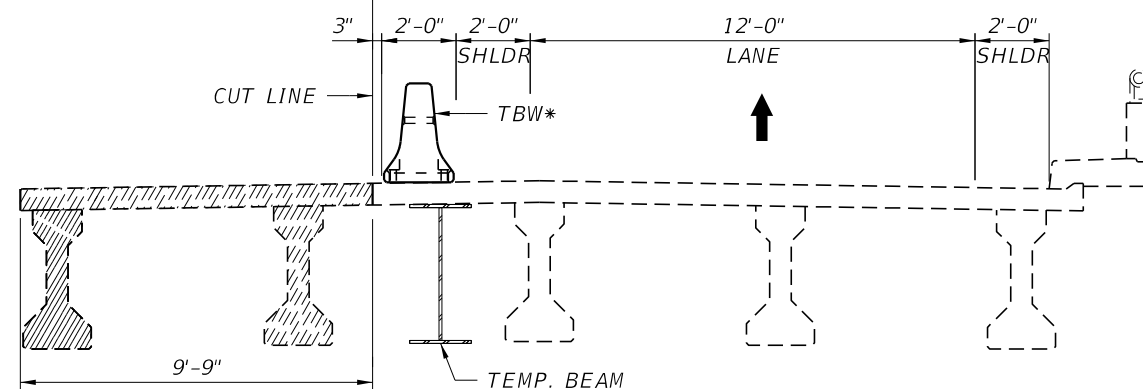
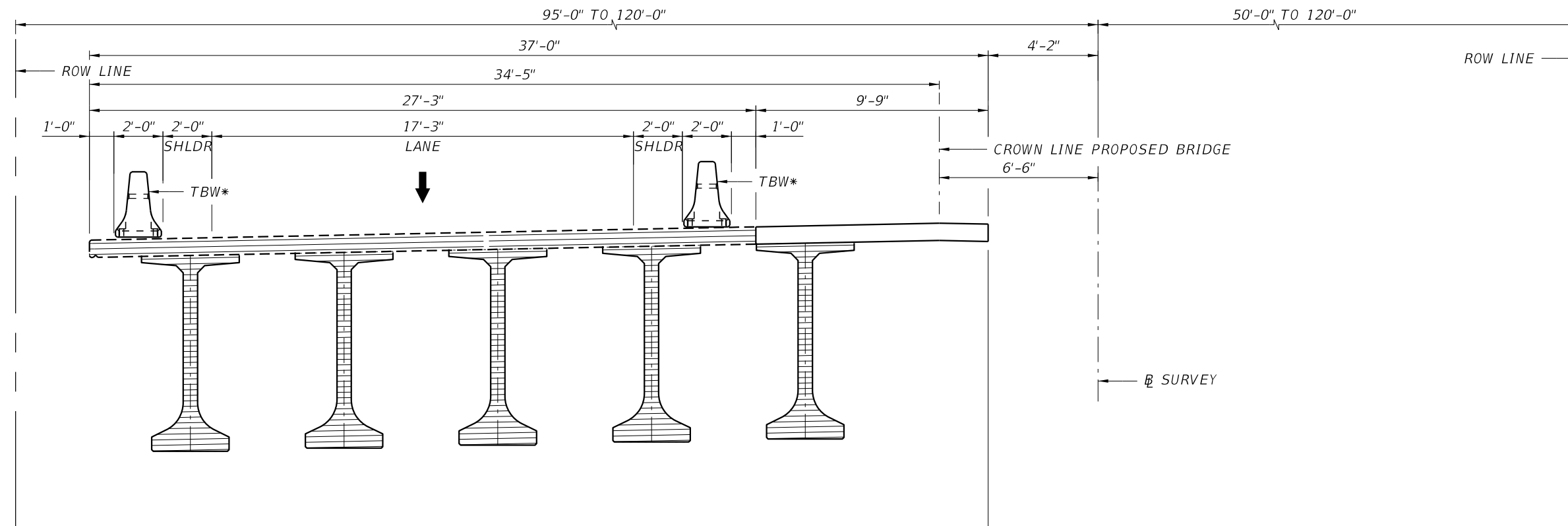
PHASE I
(SPANS 1 THRU 8 AND 12 THRU 19)

LEGEND:

- EXISTING STRUCTURE
- EXISTING STRUCTURE TO BE REMOVED
- PROPOSED STRUCTURE
- TBW* TEMP. BARRIER WALL
BOLTED, INDEX 102-110

OPTION NO. 2

REVISIONS						SOHEILA SADOUGH, P.E. P.E. LICENSE NUMBER 44130 ASA CONSULTANTS, INC. 510 SHOTGUN ROAD, SUITE 402 SUNRISE, FL. 33326	DRAWN BY: CMR 01-20 CHECKED BY: SS 01-20 DESIGNED BY: SS 01-20 CHECKED BY: CMR 01-20	STATE OF FLORIDA DEPARTMENT OF TRANSPORTATION			SHEET TITLE: CONSTRUCTION SEQUENCE (1 OF 6)	REF. DWG. NO.
DATE	BY	DESCRIPTION	DATE	BY	DESCRIPTION			ROAD NO.	COUNTY	FINANCIAL PROJECT ID		
							A1A	BREVARD INDIAN RIVER		SEBASTIAN INLET BRIDGE	B-5	



PHASE II
(SPANS 1 THRU 8 AND 12 THRU 19)

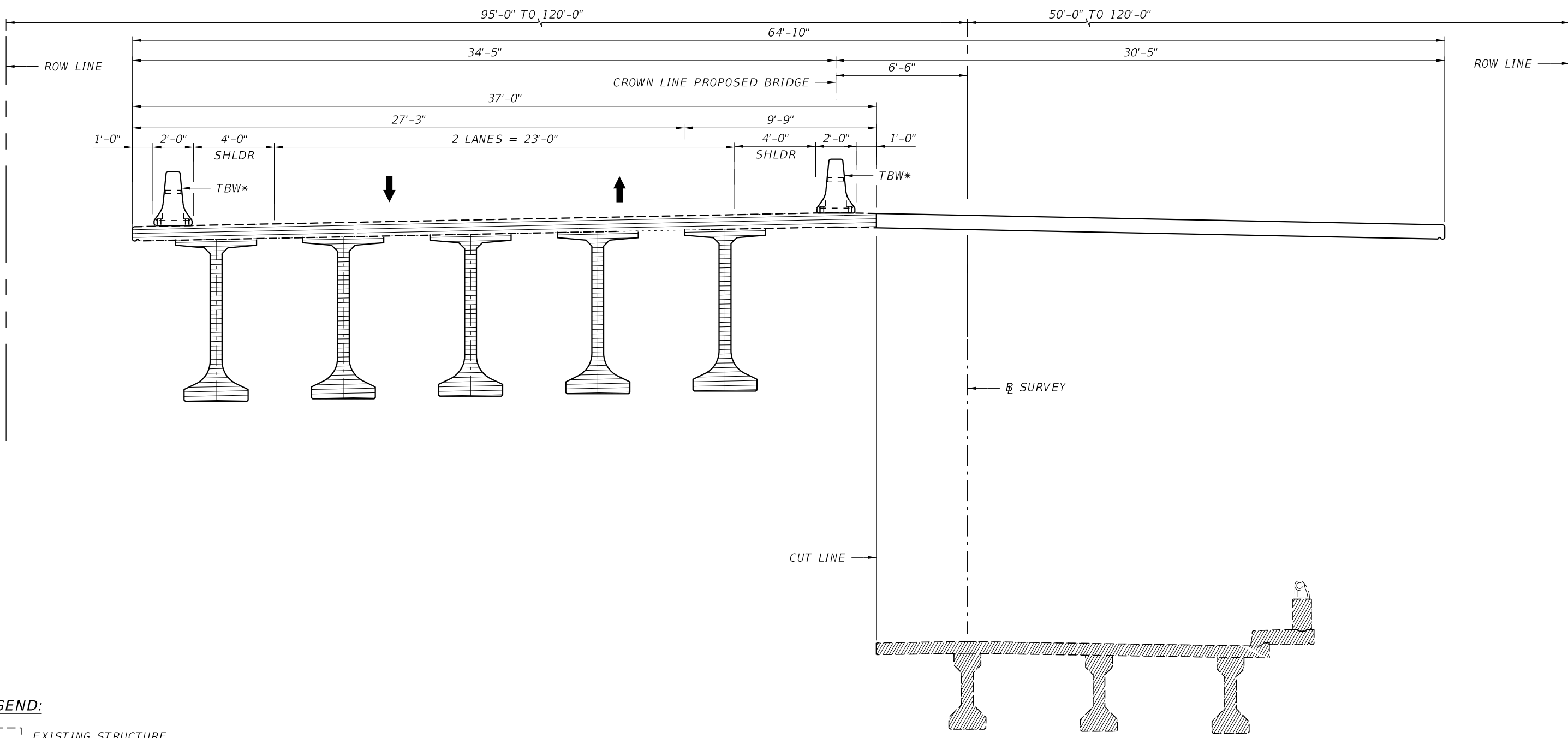
LEGEND:

- EXISTING STRUCTURE
- EXISTING STRUCTURE TO BE REMOVED
- PROPOSED STRUCTURE
- PROPOSED STRUCTURE BUILT IN PHASE I

TBW* TEMP. BARRIER WALL
BOLTED, INDEX 102-110

OPTION NO. 2

REVISIONS						SOHEILA SADOUGH, P.E. P.E. LICENSE NUMBER 44130 ASA CONSULTANTS, INC. 510 SHOTGUN ROAD, SUITE 402 SUNRISE, FL. 33326	DRAWN BY: CMR 01-20 CHECKED BY: SS 01-20 DESIGNED BY: SS 01-20 CHECKED BY: CMR 01-20	STATE OF FLORIDA DEPARTMENT OF TRANSPORTATION			SHEET TITLE: CONSTRUCTION SEQUENCE (2 OF 6)		REF. DWG. NO.
DATE	BY	DESCRIPTION	DATE	BY	DESCRIPTION			ROAD NO.	COUNTY	FINANCIAL PROJECT ID	PROJECT NAME:		SHEET NO.
						A1A	BREVARD INDIAN RIVER		SEBASTIAN INLET BRIDGE		B-6		



LEGEND:

[---] EXISTING STRUCTURE

[Hatched] EXISTING STRUCTURE TO BE REMOVED

[Solid] PROPOSED STRUCTURE

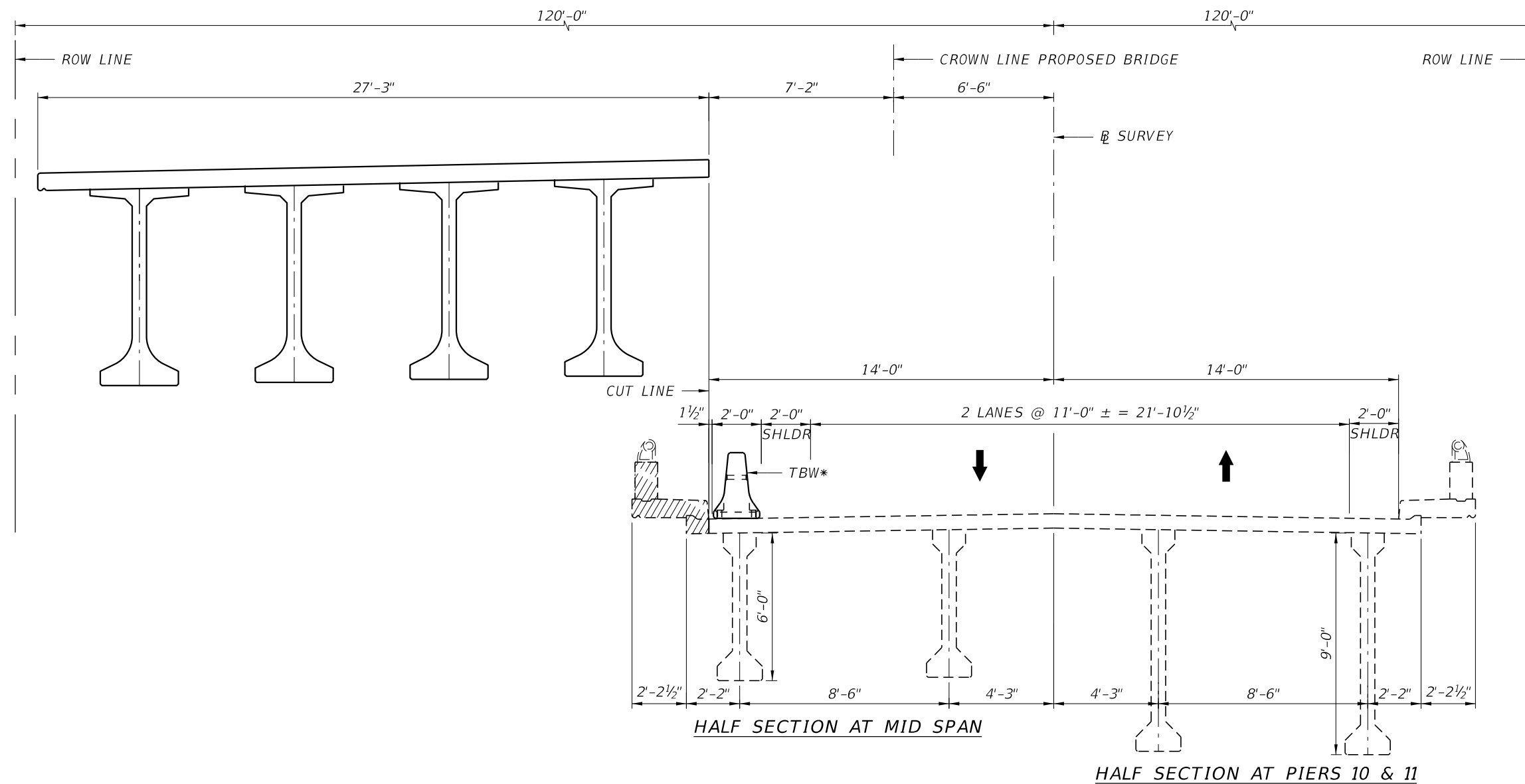
[Dashed] PROPOSED STRUCTURE BUILT IN PHASE I

TBW* TEMP. BARRIER WALL
BOLTED, INDEX 102-110

PHASE III
(SPANS 1 THRU 8 AND 12 THRU 19)

OPTION NO. 2

REVISIONS						SOHEILA SADOUGH, P.E. P.E. LICENSE NUMBER 44130 ASA CONSULTANTS, INC. 510 SHOTGUN ROAD, SUITE 402 SUNRISE, FL. 33326	DRAWN BY: CMR 01-20 CHECKED BY: SS 01-20 DESIGNED BY: SS 01-20 CHECKED BY: CMR 01-20	STATE OF FLORIDA DEPARTMENT OF TRANSPORTATION			SHEET TITLE:		REF. DWG. NO.
DATE	BY	DESCRIPTION	DATE	BY	DESCRIPTION			ROAD NO.	COUNTY	FINANCIAL PROJECT ID	CONSTRUCTION SEQUENCE (3 OF 6)		
								A1A	BREVARD INDIAN RIVER		SEBASTIAN INLET BRIDGE		SHEET NO.
											B-7		



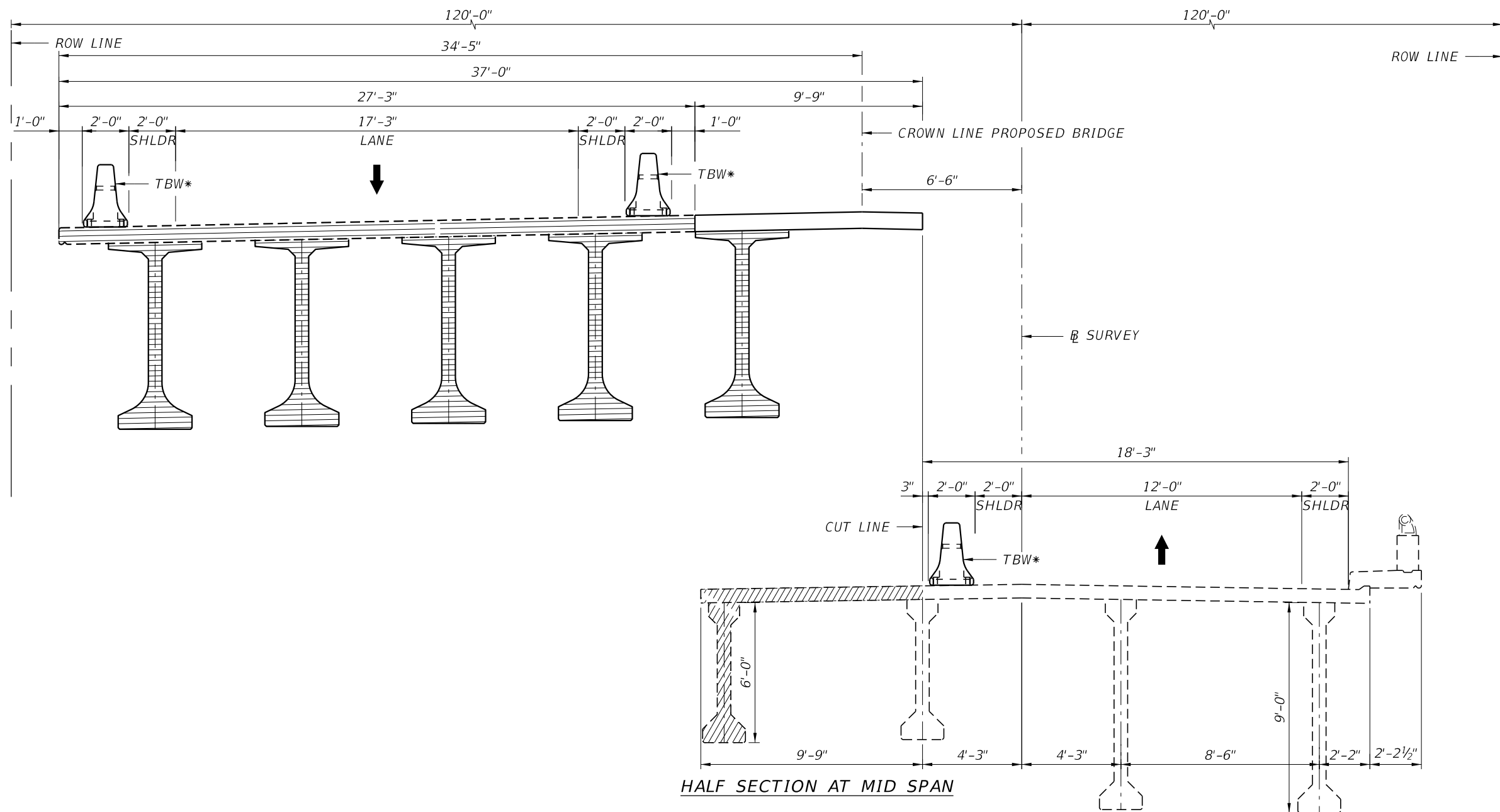
PHASE I
(SPANS 9 THRU 11)

LEGEND:

- EXISTING STRUCTURE
- EXISTING STRUCTURE TO BE REMOVED
- PROPOSED STRUCTURE
- TBW* TEMP. BARRIER WALL
BOLTED, INDEX 102-110

OPTION NO. 2

REVISIONS						SOHEILA SADOUGH, P.E. P.E. LICENSE NUMBER 44130 ASA CONSULTANTS, INC. 510 SHOTGUN ROAD, SUITE 402 SUNRISE, FL. 33326	DRAWN BY: CMR 01-20 CHECKED BY: SS 01-20 DESIGNED BY: SS 01-20 CHECKED BY: CMR 01-20	STATE OF FLORIDA DEPARTMENT OF TRANSPORTATION			SHEET TITLE: CONSTRUCTION SEQUENCE (4 OF 6)	REF. DWG. NO.
DATE	BY	DESCRIPTION	DATE	BY	DESCRIPTION			ROAD NO.	COUNTY	FINANCIAL PROJECT ID		
							A1A	BREVARD INDIAN RIVER		SEBASTIAN INLET BRIDGE	B-8	



LEGEND:

--- EXISTING STRUCTURE

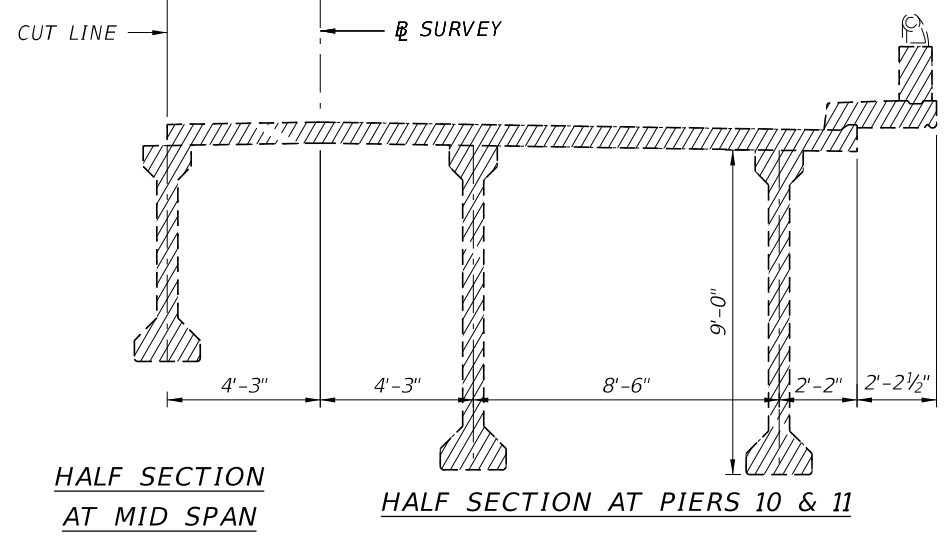
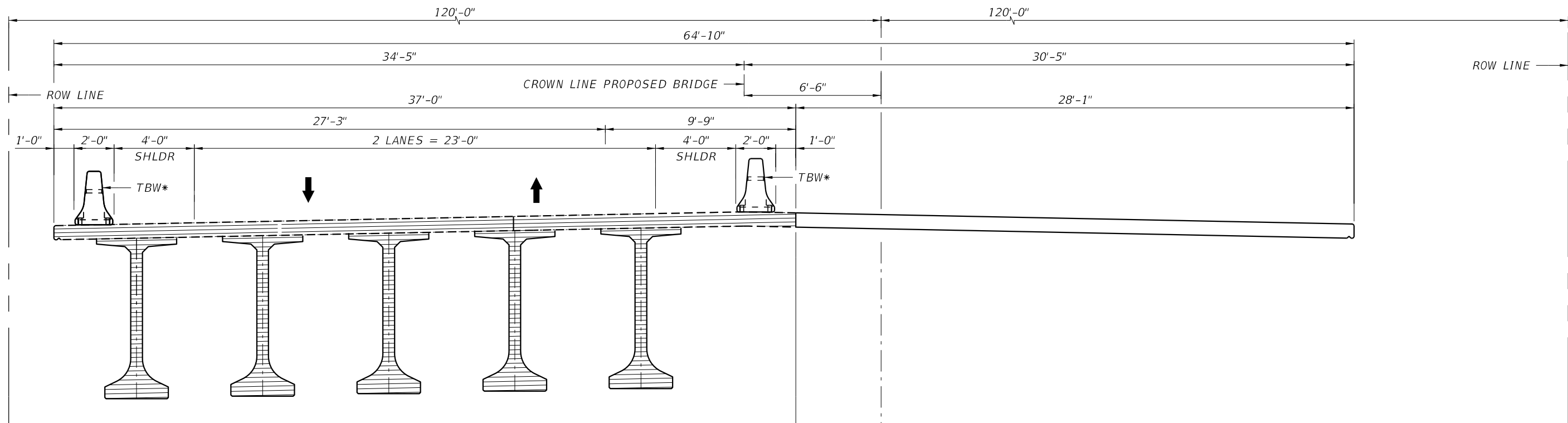
--- EXISTING STRUCTURE TO BE REMOVED

--- PROPOSED STRUCTURE

TBW* TEMP. BARRIER WALL
BOLTED, INDEX 102-110

OPTION NO. 2

REVISIONS						SOHEILA SADOUGH, P.E. P.E. LICENSE NUMBER 44130 ASA CONSULTANTS, INC. 510 SHOTGUN ROAD, SUITE 402 SUNRISE, FL. 33326	DRAWN BY: CMR 01-20 CHECKED BY: SS 01-20 DESIGNED BY: SS 01-20 CHECKED BY: CMR 01-20	STATE OF FLORIDA DEPARTMENT OF TRANSPORTATION			SHEET TITLE: CONSTRUCTION SEQUENCE (5 OF 6)	REF. DWG. NO.
DATE	BY	DESCRIPTION	DATE	BY	DESCRIPTION			ROAD NO.	COUNTY	FINANCIAL PROJECT ID		
							A1A	BREVARD INDIAN RIVER		SEBASTIAN INLET BRIDGE	B-9	



LEGEND:
 [---] EXISTING STRUCTURE
 [---] EXISTING STRUCTURE TO BE REMOVED
 [] PROPOSED STRUCTURE
 TBW* TEMP. BARRIER WALL
 BOLTED, INDEX 102-110

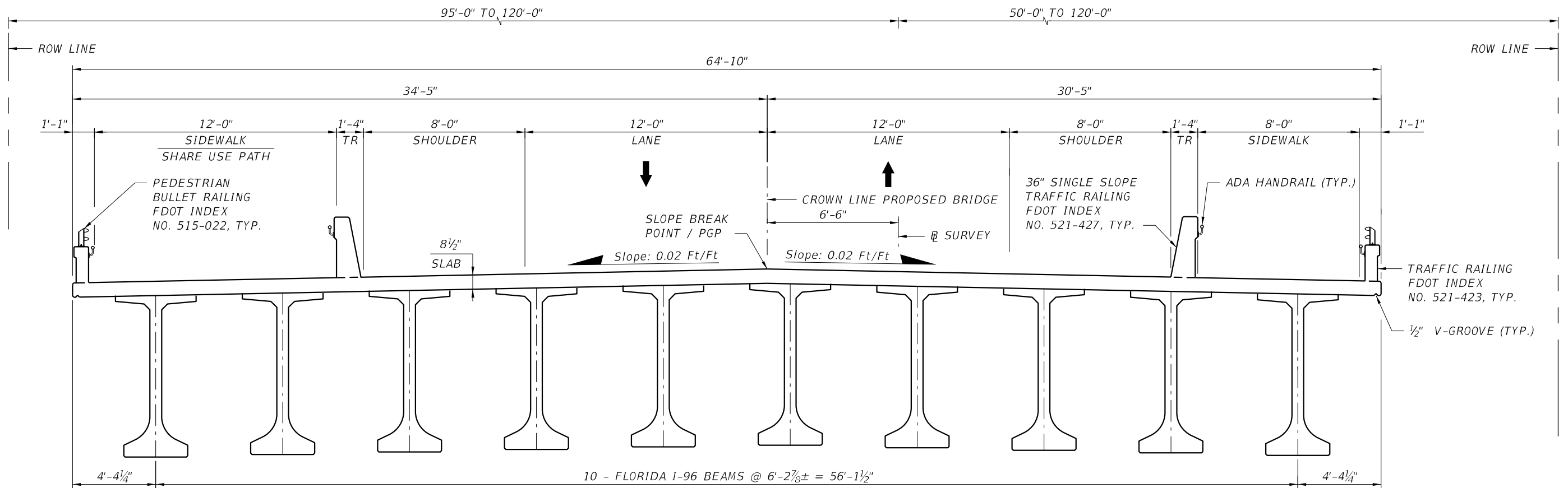
PHASE III
 (SPANS 9 THRU 11)

OPTION NO. 2

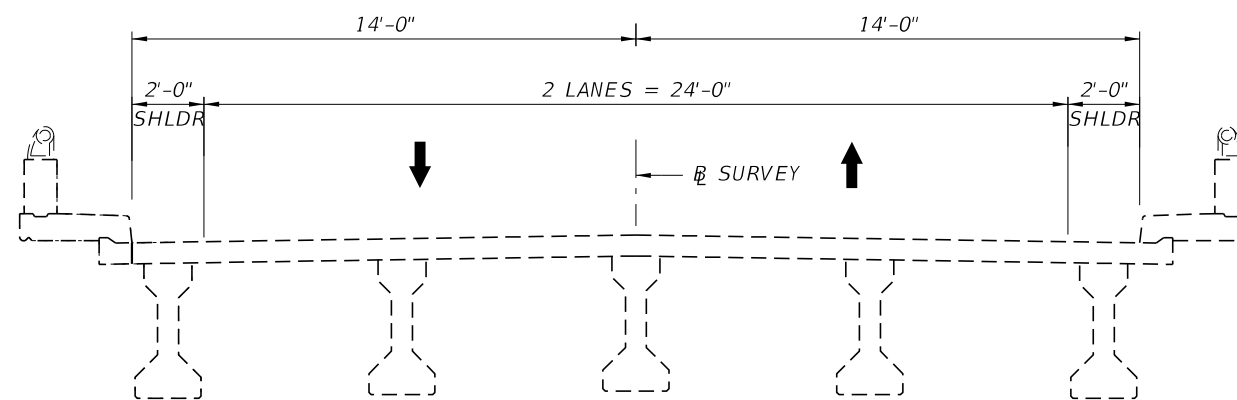
REVISIONS						DRAWN BY: CMR 01-20	STATE OF FLORIDA DEPARTMENT OF TRANSPORTATION			SHEET TITLE: CONSTRUCTION SEQUENCE (6 OF 6)	REF. DWG. NO.
DATE	BY	DESCRIPTION	DATE	BY	DESCRIPTION		ROAD NO.	COUNTY	FINANCIAL PROJECT ID		
						CHECKED BY: SS 01-20	A1A	BREVARD		PROJECT NAME: SEBASTIAN INLET BRIDGE	SHEET NO. B-10
						DESIGNED BY: SS 01-20		INDIAN RIVER			
						CHECKED BY: CMR 01-20					

SOHEILA SADOUGH, P.E.
 P.E. LICENSE NUMBER 44130
 ASA CONSULTANTS, INC.
 510 SHOTGUN ROAD, SUITE 402
 SUNRISE, FL. 33326

\$USERS\$ \$DATES\$ \$TIMES\$ \$FILES\$



PROPOSED TYPICAL SECTION



**EXISTING TYPICAL SECTION
SPANS 1-8 & 12 THRU 19**

LEGEND:
TR = TRAFFIC RAILING

REVISIONS						DRAWN BY: CMR 01-20	STATE OF FLORIDA DEPARTMENT OF TRANSPORTATION			SHEET TITLE: PROPOSED TYPICAL SECTION	REF. DWG. NO.
DATE	BY	DESCRIPTION	DATE	BY	DESCRIPTION		ROAD NO.	COUNTY	FINANCIAL PROJECT ID		
						CHECKED BY: SS 01-20	A1A	BREVARD		SEBASTIAN INLET BRIDGE	SHEET NO.
						DESIGNED BY: SS 01-20		INDIAN RIVER			B-11
						CHECKED BY: CMR 01-20					

SUSERS\$ \$DATES \$TIMES \$FILES