



CENTRAL BROWARD



TRANSIT STUDY

Central Broward Transit (CBT) Phase 1 Public Open House

January 21, 2016

CBT Phase 1/Wave Extensions

AGENDA

- What is the CBT Phase 1 Project?
- Who are the Project Partners?
- Where is the Project Located?
- What is a Streetcar?
- What are the Project Features?
- What is the Current Status?
- What are the Next Steps?
- Who can I Contact with Questions?



What is the Central Broward Transit (CBT) Phase 1 Project?

- **CBT Phase 1 is a proposed Project that would extend the future Wave Streetcar**
- **Wave Streetcar is currently being implemented in downtown Fort Lauderdale**

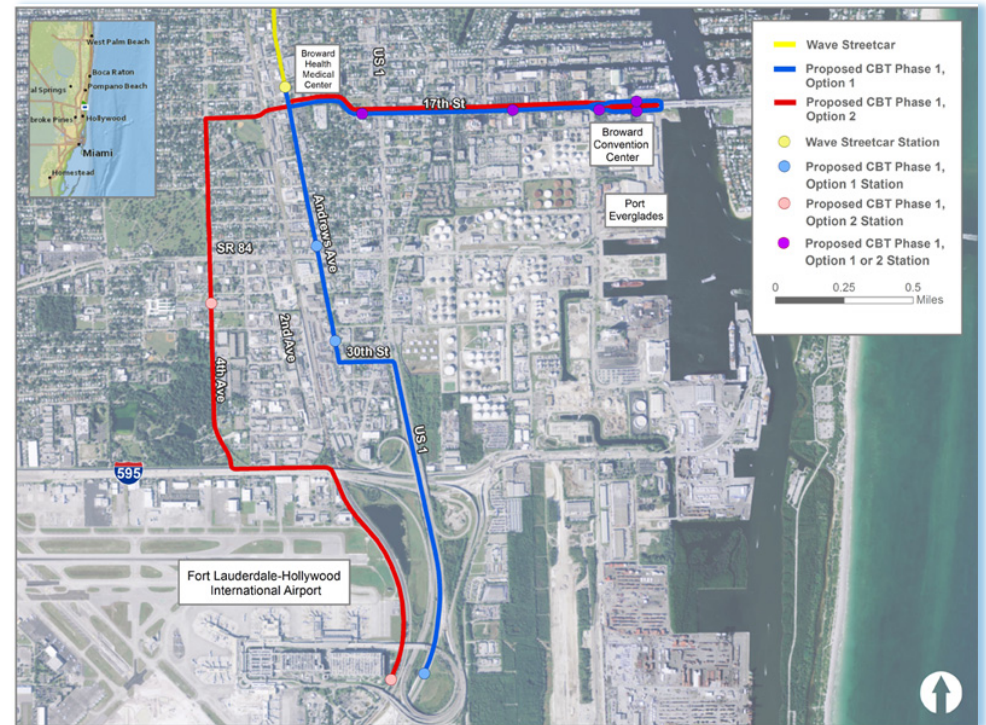


Who are the CBT Phase 1 Partners

- **Florida Department of Transportation (FDOT)**
- **Broward County**
- **Broward Metropolitan Planning Organization (Broward MPO)**
- **City of Fort Lauderdale**
- **Downtown Development Authority (DDA)**

Where is the CBT Phase 1 Project Located?

- **Begins at the Southern Terminus of the Wave**
 - SE 17th Street & Andrews Avenue at Broward Health Medical Center
- **Extends Streetcar in two Directions:**
 - East on SE 17th Street to the Convention Center/North Port Everglades
 - South on Andrews Avenue & US 1 to the Airport (Option 1)
 - South on SW 4th Avenue & Perimeter Road to the Airport (Option 2)



What is the Purpose of the CBT Phase 1 Project?

- **Improve mobility between the Major Activity Centers within the Study Area**
- **Enhance Transit Connectivity using Modern Streetcars**



What is a Modern Streetcar?

- **Steel-Wheeled Passenger Vehicles**
- **Operate Along Tracks Laid in the Street**
- **May Operate in Mixed-Traffic or in a Dedicated Running-Way**
- **Vehicles Typically Powered by Overhead Electric Catenary Wires**
- **Can Be Coupled Together to Form Small Trains**



What are the Features and Benefits of Modern Streetcar?

- **Stops Similarly Spaced to Bus Routes**
- **Travel at Speeds Similar to Surrounding Traffic**
- **Circulate Among Major Attractions**
- **Encourages Economic Development**
- **Encourages Transit-Oriented Development Near Stops**

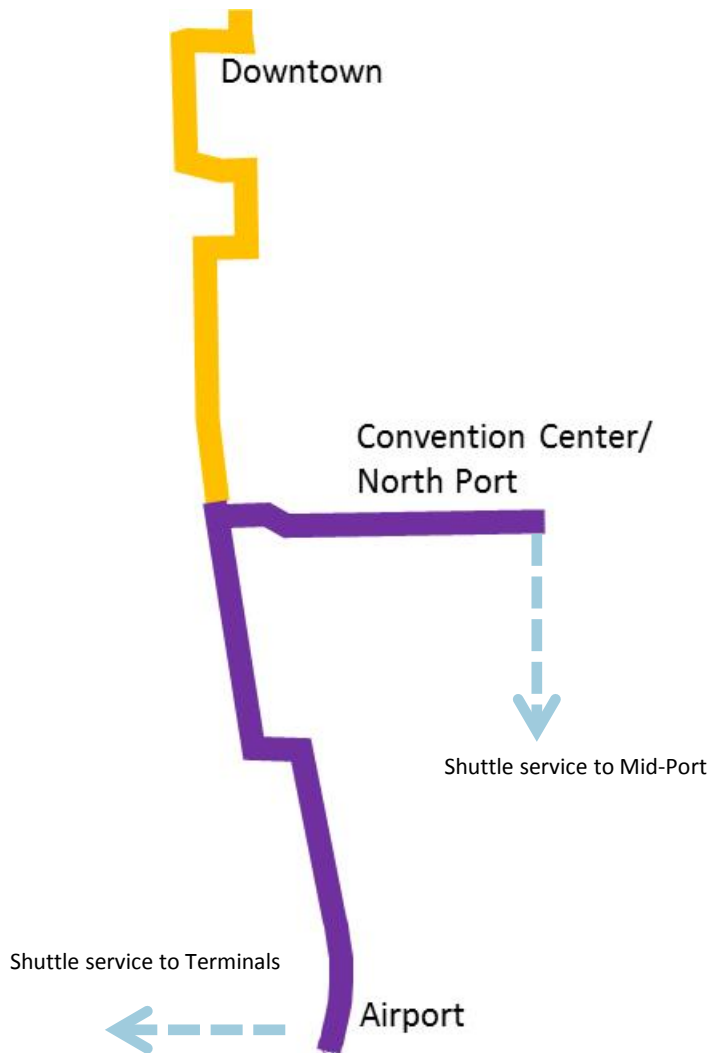


What Destinations Would the CBT Phase 1 Project Connect?

- **Downtown Fort Lauderdale**
- **Greater Fort Lauderdale – Broward County Convention Center**
- **17th Street Commercial Area**
- **Port Everglades**
- **Andrews Avenue Commercial Area**
- **Fort Lauderdale – Hollywood International Airport**



What are the Features of CBT Phase 1?



- **3.7 Mile Extension of Wave Streetcar***
- **Seven (7) New Stations**
- **Frequency**
 - Streetcar in each direction every eight (8) minutes during Peak Times
 - Streetcar in each direction every 16 minutes during Off-Peak Times
- **Travel Times***
 - Downtown to Convention Center/North Port: 26 Minutes **
 - Downtown to Airport: 28 Minutes**
 - Airport to Convention Center/North Port: 12 Minutes

*Option 1
**with transfer

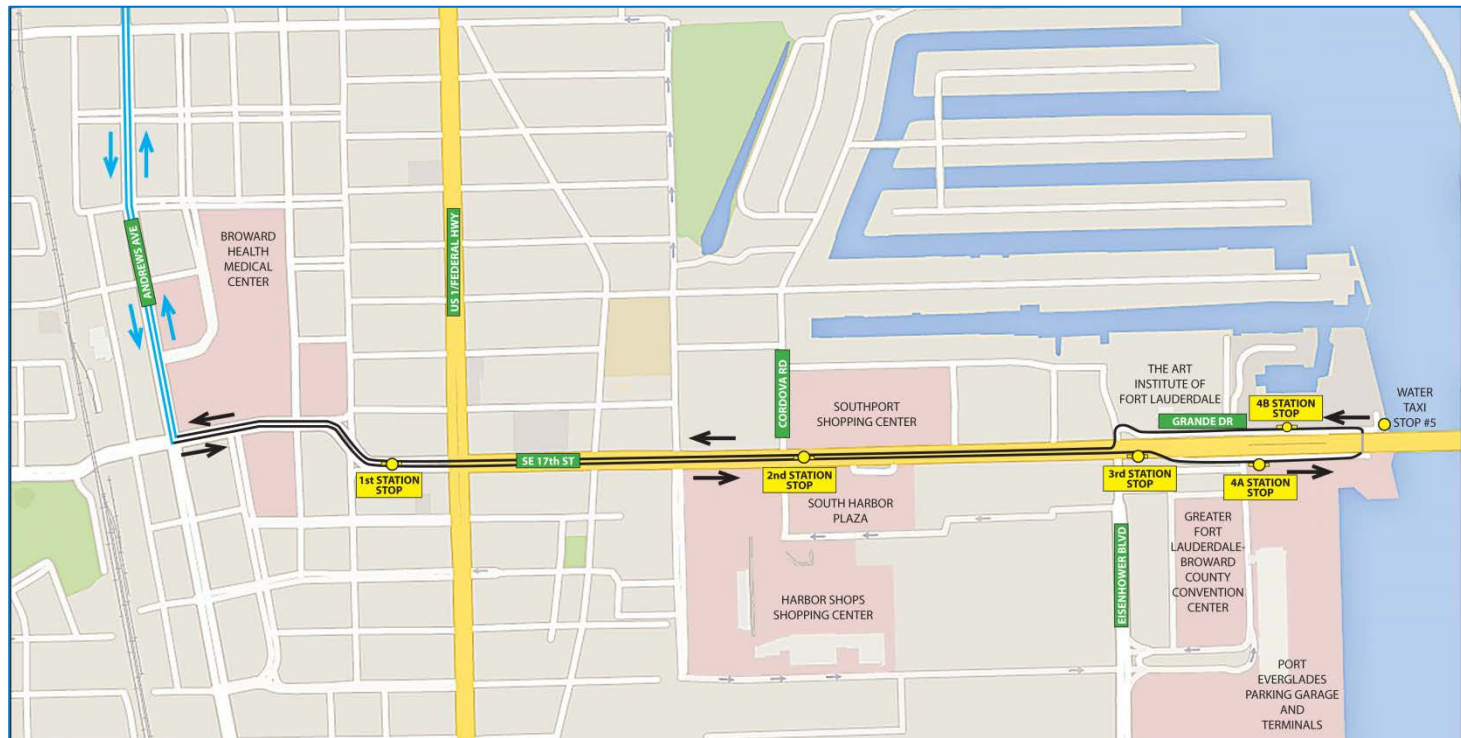
How Would the Streetcar to the Airport Operate?

- **Mixed Traffic on Andrews Avenue & SE 30th Street**
- **Dedicated right of way in US 1 Median to Airport Station**
- **Optional Alignment is along SW 4th Avenue/ Perimeter Road to an Airport Station**



How Would the Streetcar on SE 17th Street Operate?

- Mixed Traffic Center Lanes on 17th Street
- Streetcar would serve 17th Street businesses, hotels, Convention Center & North Port
 - Shuttle Connections to Mid Port



What is the History of the CBT Phase 1 Project?

- **2012:**
 - **Locally Preferred Alternative Adopted by the Broward MPO**
- **2014:**
 - **FTA Determined that an Environmental Assessment (EA) would be prepared for Phase 1 of the LPA**
- **2015:**
 - **CBT Phase 1 Entered FTA Project Development (PD)**

What is the Current Status of the CBT Phase 1 Project?

- **CBT Phase 1 Project has entered the FTA Project Development Process**
 - Technical Evaluation of the Proposed Construction and Operation of Modern Streetcar Service
- **Details Currently Being Refined**
 - Route
 - Stops
 - Schedule
 - Costs



What Are the Next Steps for CBT Phase 1?

- **Environmental Assessment (EA) Prepared in Accordance with National Environmental Policy Act of 1969 (NEPA)**
 - Identify Potential Impacts
 - Recommend Mitigation Measures, If Necessary
- **Draft EA Anticipated Summer 2016**
 - EA will be Available for Public Comment
 - Public Hearings

What are the Future Phases of the CBT Project?

- Phase 1 – Segment Approved by FTA to Enter Project Development
Extending Wave Streetcar South to Airport & East to Port Everglades
- Future Phases
 - Phase 2: Extending Wave north to Broward Boulevard Tri-Rail Station
 - Phase 3: Extending Wave west from Airport to the South Florida Education Center



How Can I Get More Information?

For More Information Please Contact:

Khalilah Ffrench, P.E.

FDOT Project Manager

(954) 777-4490

khalilah.fffrench@dot.state.fl.us

Please visit our Website!

www.centralbrowardtransit.com