



## CENTRAL BROWARD EAST-WEST TRANSIT STUDY



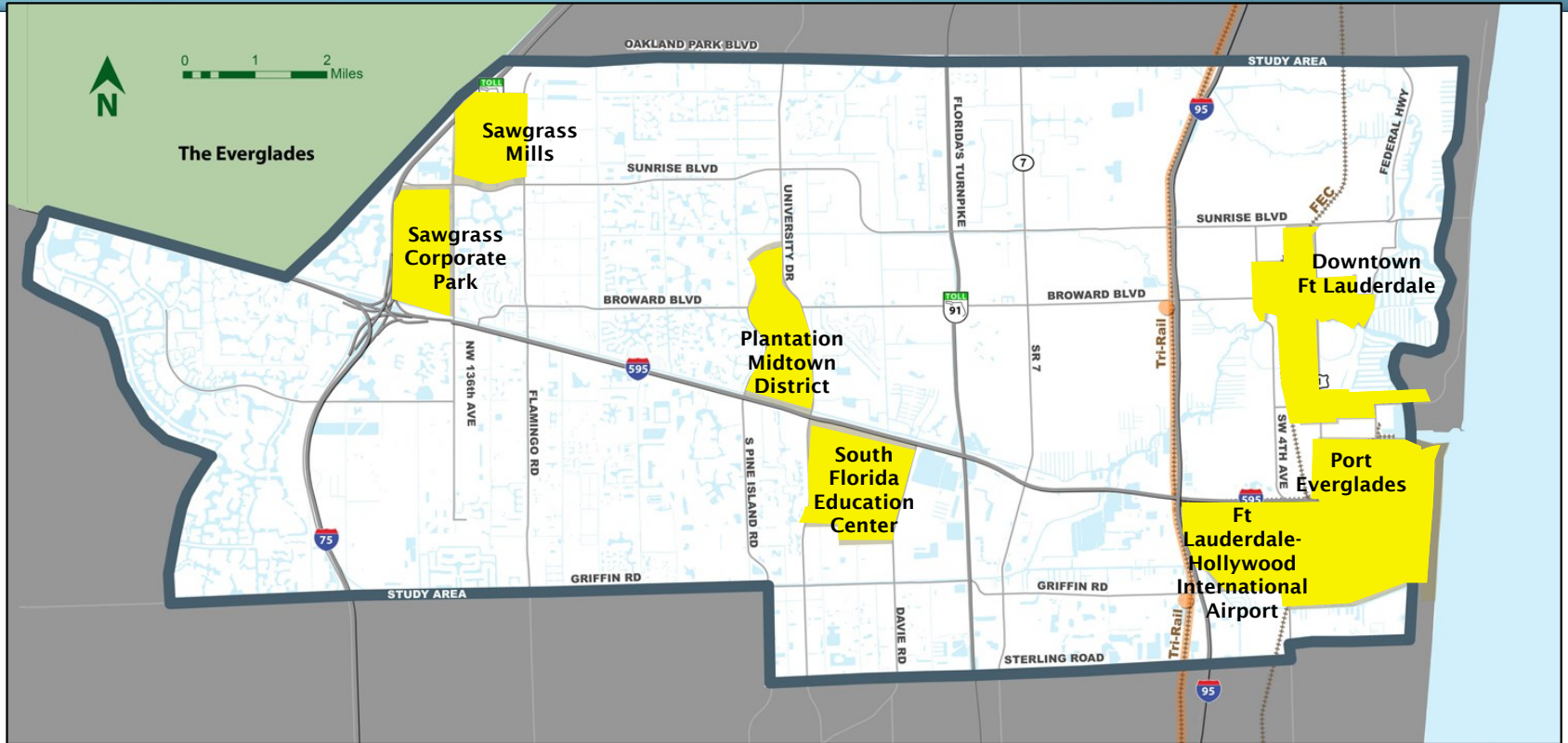
SOUTH FLORIDA  
REGIONAL  
TRANSPORTATION  
AUTHORITY

## CENTRAL BROWARD

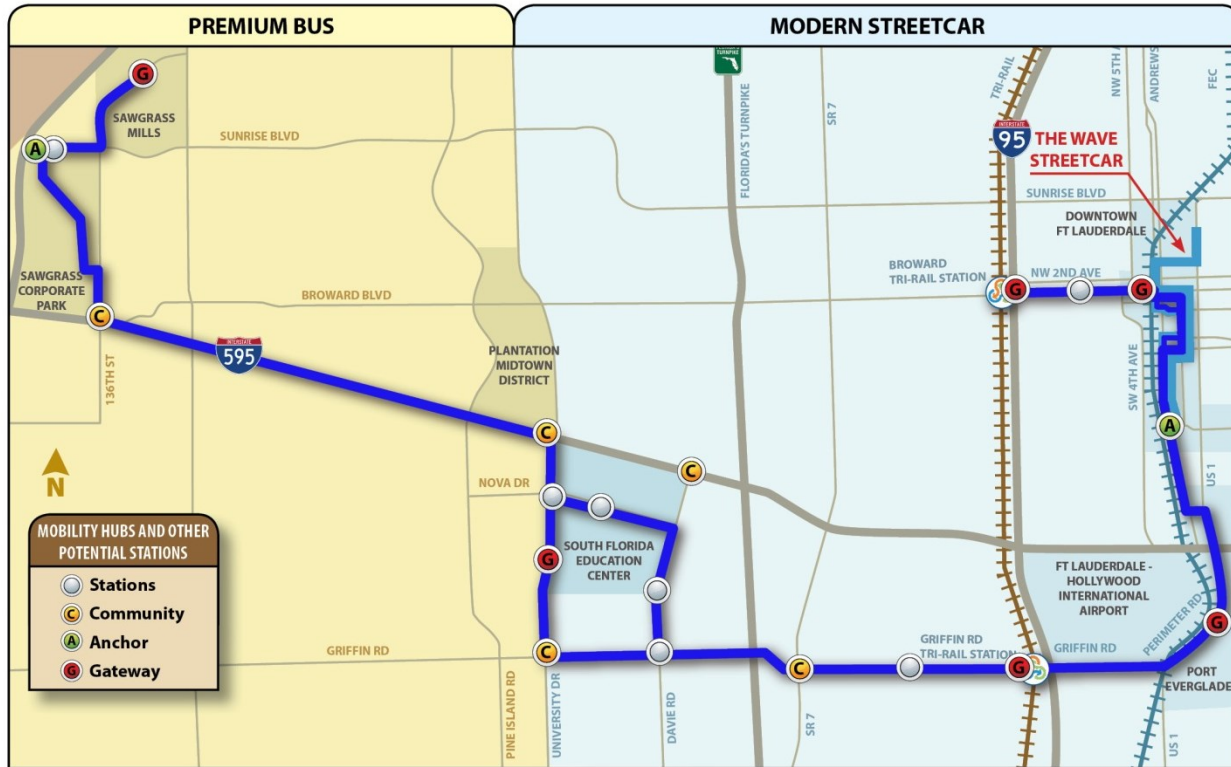


TRANSIT STUDY

# CBT Study Area

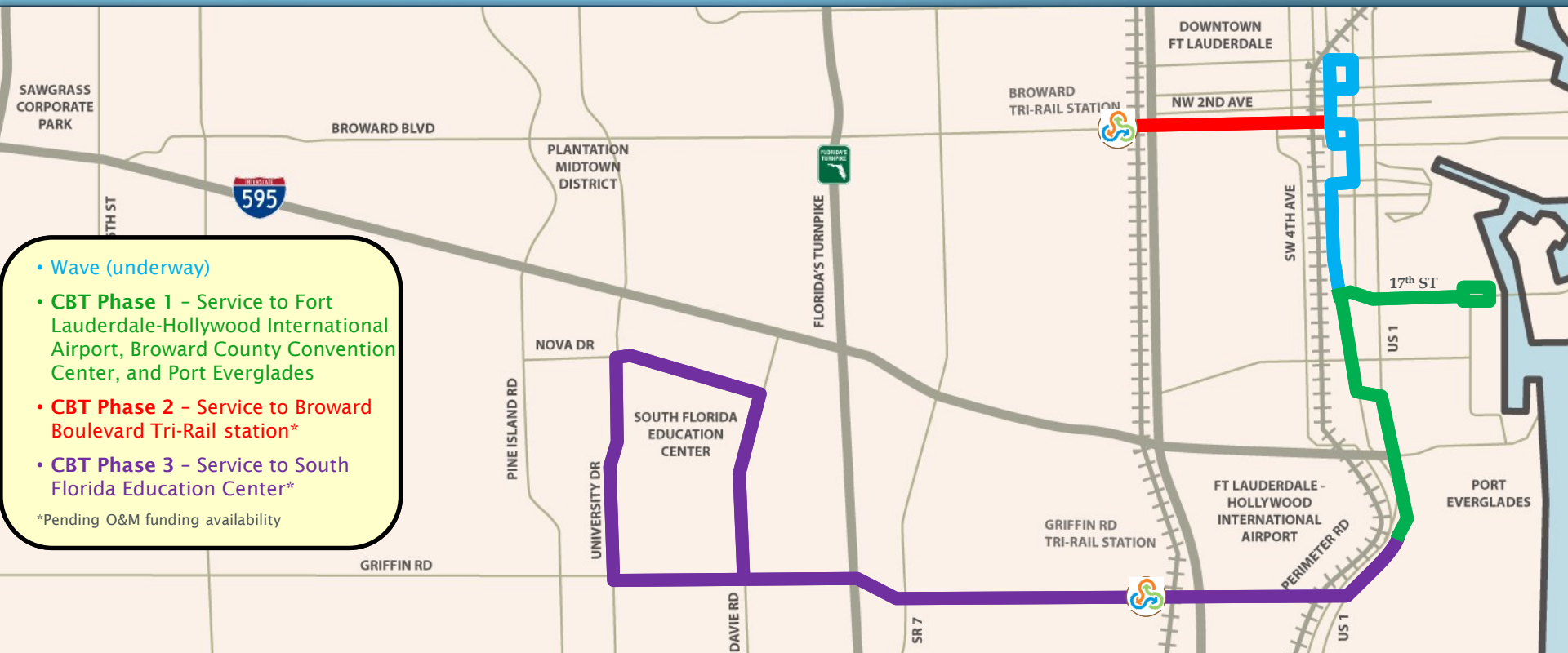


# Locally Preferred Alternative



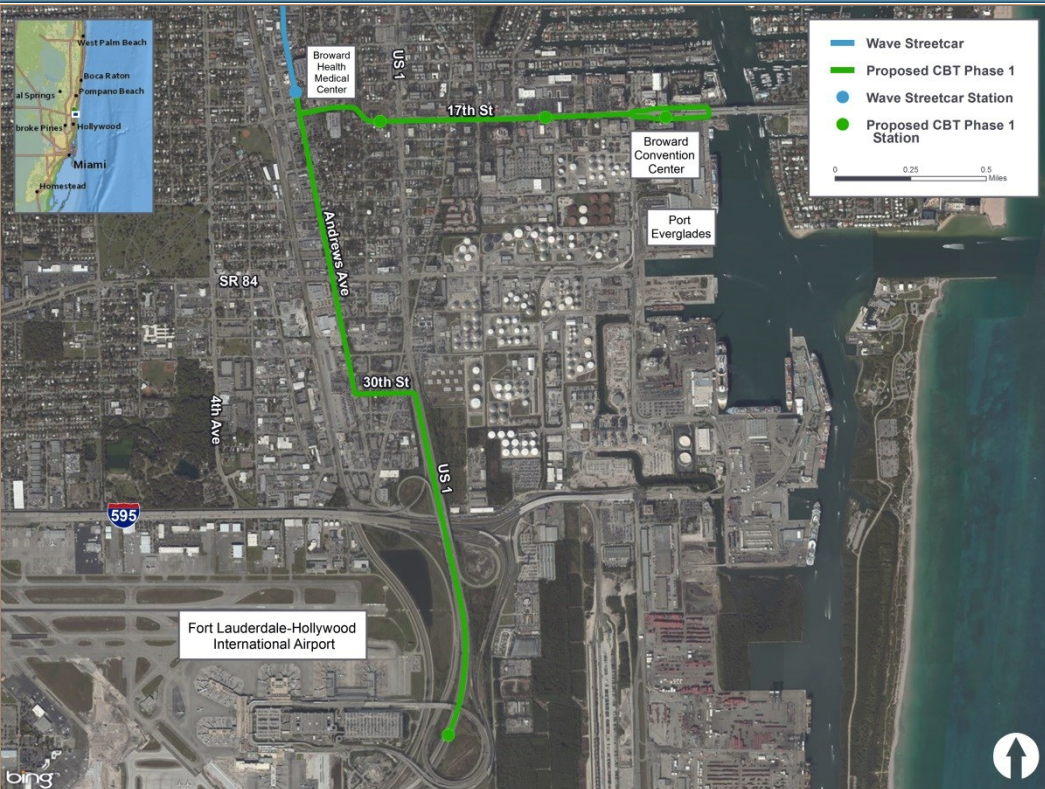
- At-grade within existing right-of-way
- Mixed traffic with some exclusive sections
- 25 miles = 13 miles of streetcar + 12 miles of premium bus
- 17 stations (excluding Wave):  
14 streetcar + 3 bus

# CBT Phasing & Integration with Wave



- Wave (underway)
  - **CBT Phase 1** - Service to Fort Lauderdale-Hollywood International Airport, Broward County Convention Center, and Port Everglades
  - **CBT Phase 2** - Service to Broward Boulevard Tri-Rail station\*
  - **CBT Phase 3** - Service to South Florida Education Center\*
- \*Pending O&M funding availability

# Central Broward Phase 1



- At-grade within existing right-of-way
- Mixed traffic with some exclusive sections
- ~ 4.5 miles of streetcar
- 4 stations (excluding Wave)

# Next Steps

- Project coordination with other efforts in the study area
- Continued stakeholder involvement
- Alignment/Station refinements
- Public Workshop
- Environmental Assessment