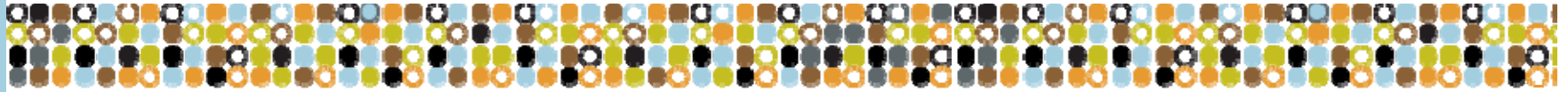


# CENTRAL BROWARD TRANSIT DRAFT ENVIRONMENTAL IMPACT STATEMENT (EIS)

## Initial Screening Options



**JACOBS**

March 7, 2013

CENTRAL BROWARD



TRANSIT STUDY

[www.centralbrowardtransit.com](http://www.centralbrowardtransit.com)

# Tonight's Presentation

- Re-Introduce the Project
- EIS Process
- Initial Screening
- Schedule
- Stakeholder Involvement

# Brief Project History

1998 – 2001

I-95/I-595 Master Plan

2002 – 2007

Alternatives Analysis (AA)

2008 – 2011

Draft Environmental Impact Statement (EIS)

2011 – 2015

Preliminary Engineering/  
Final EIS

2016 – 2017

Final Design/Funding

2018 - 2021

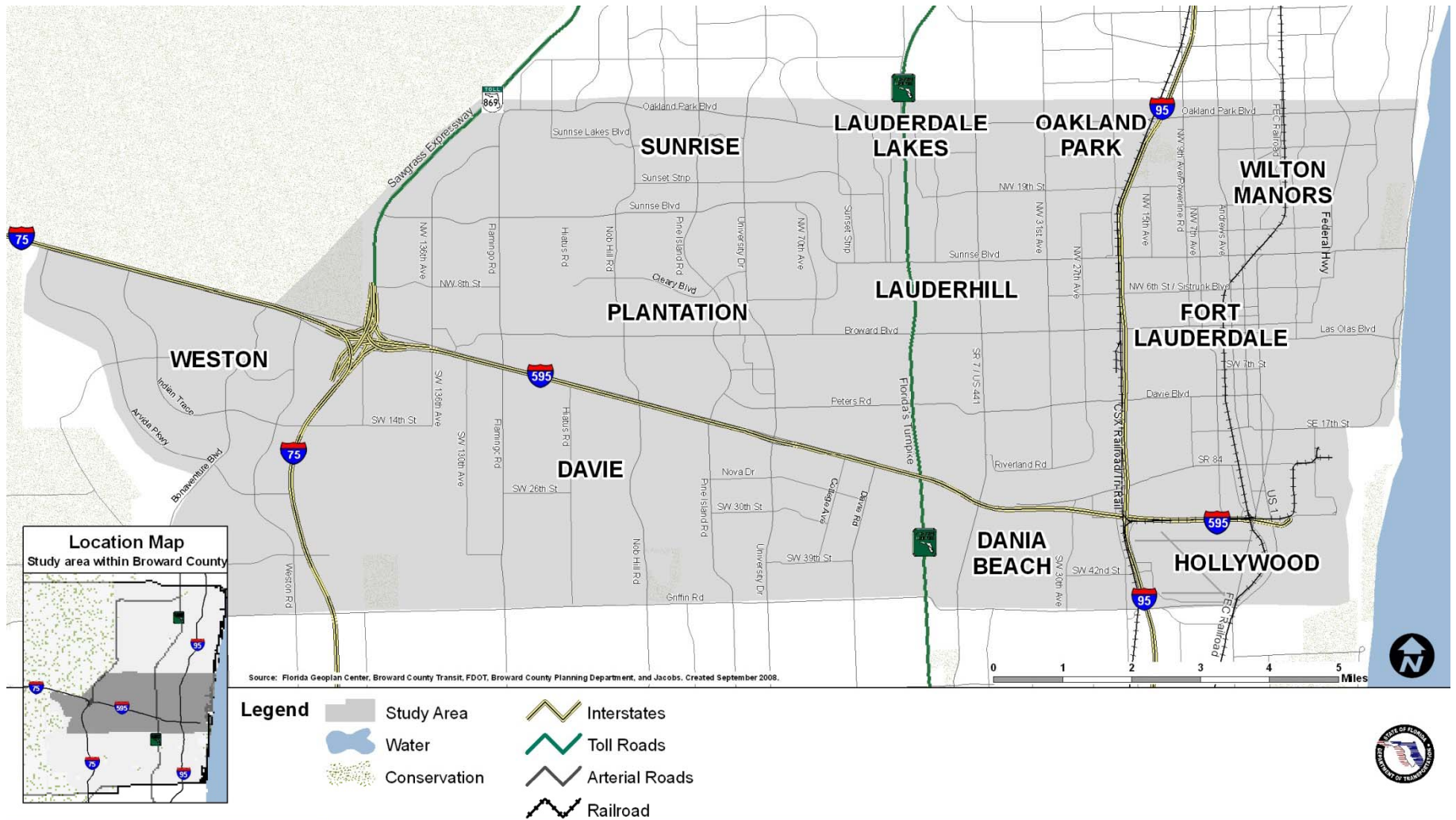
Construction

- Initial Corridor Screening
- Definition of Alternatives
- Selection of Locally Preferred Alternative

- Environmental Impact Statement
- New Starts

**WE ARE HERE**

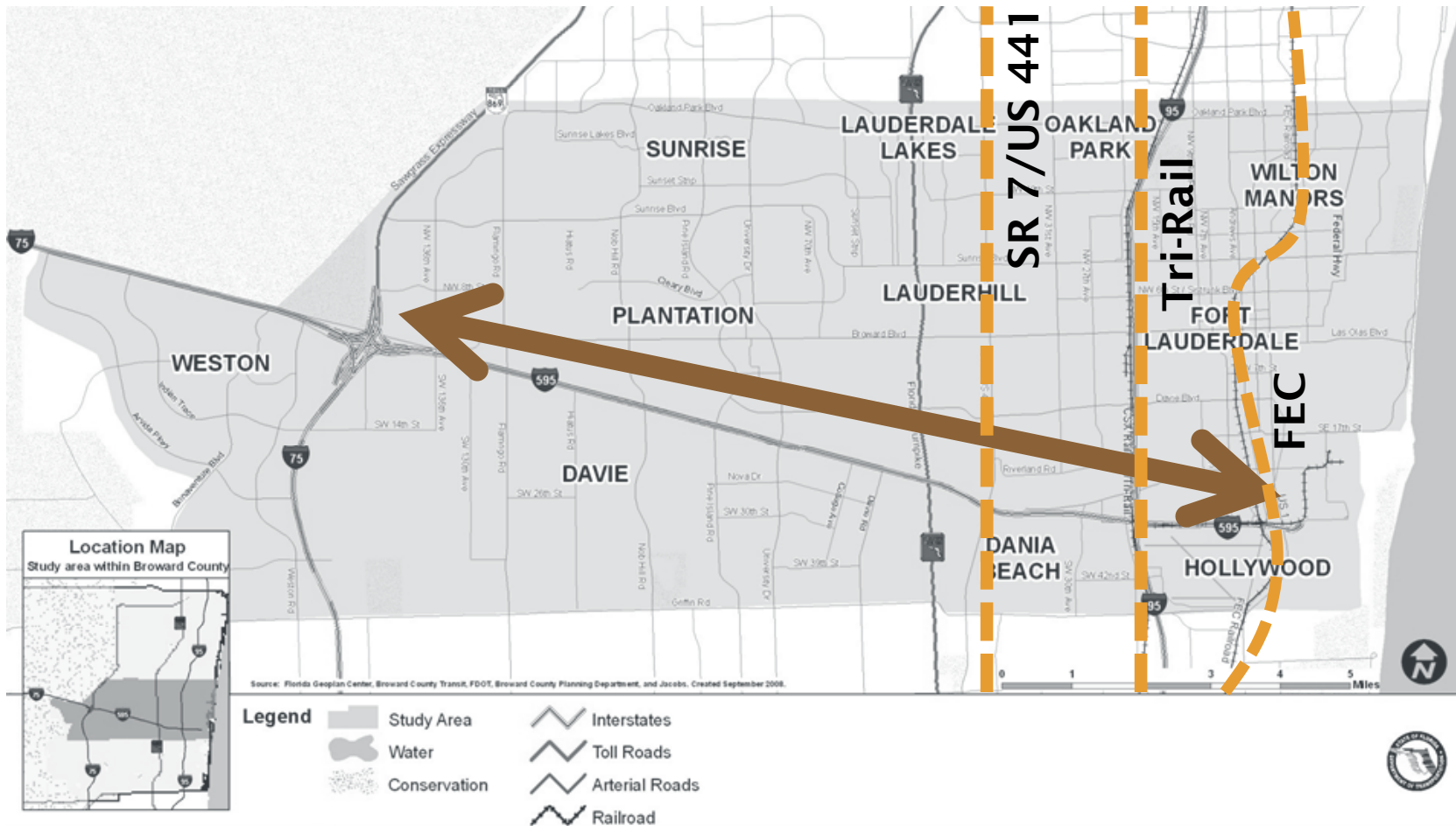
# Study Area



# Purpose & Need

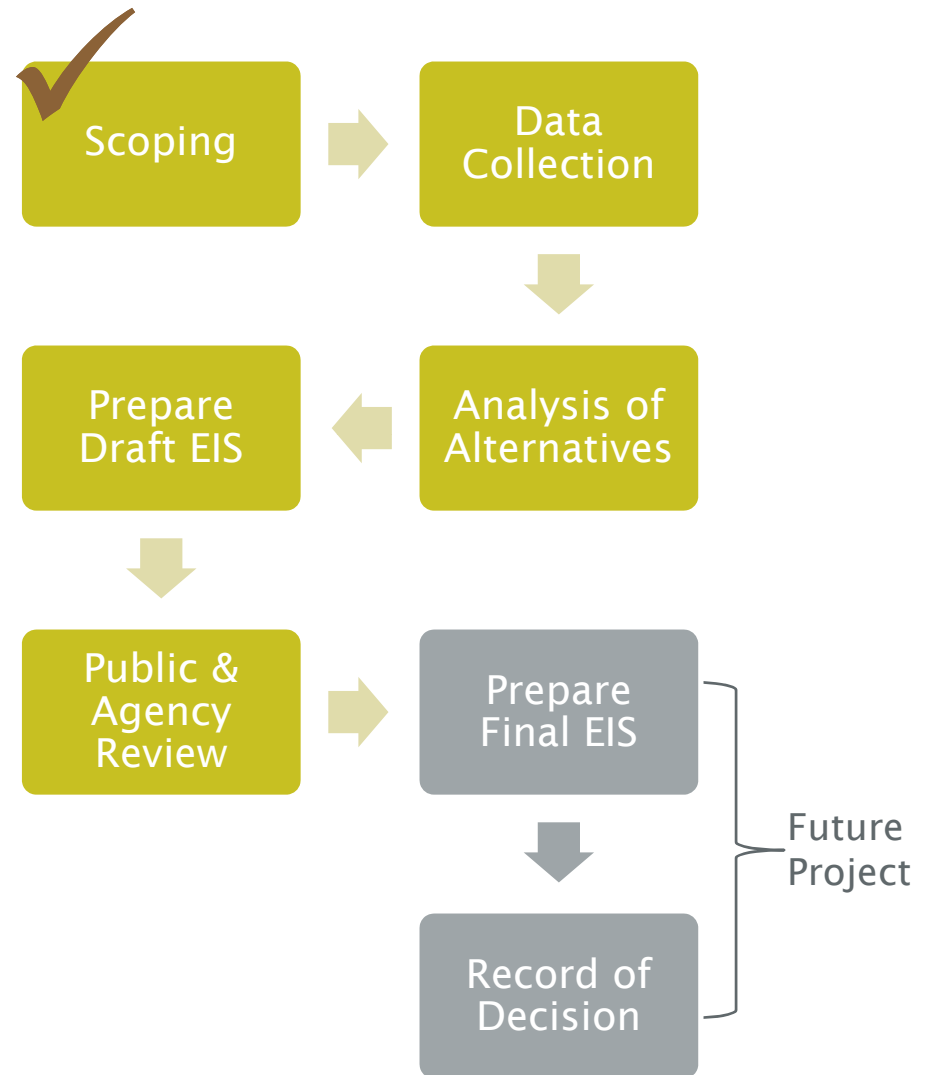
- Improve air quality
- Provide mobility options
- Serve population & employment growth
- Mitigate increased congestion
- Support economic development

# Regional Connections

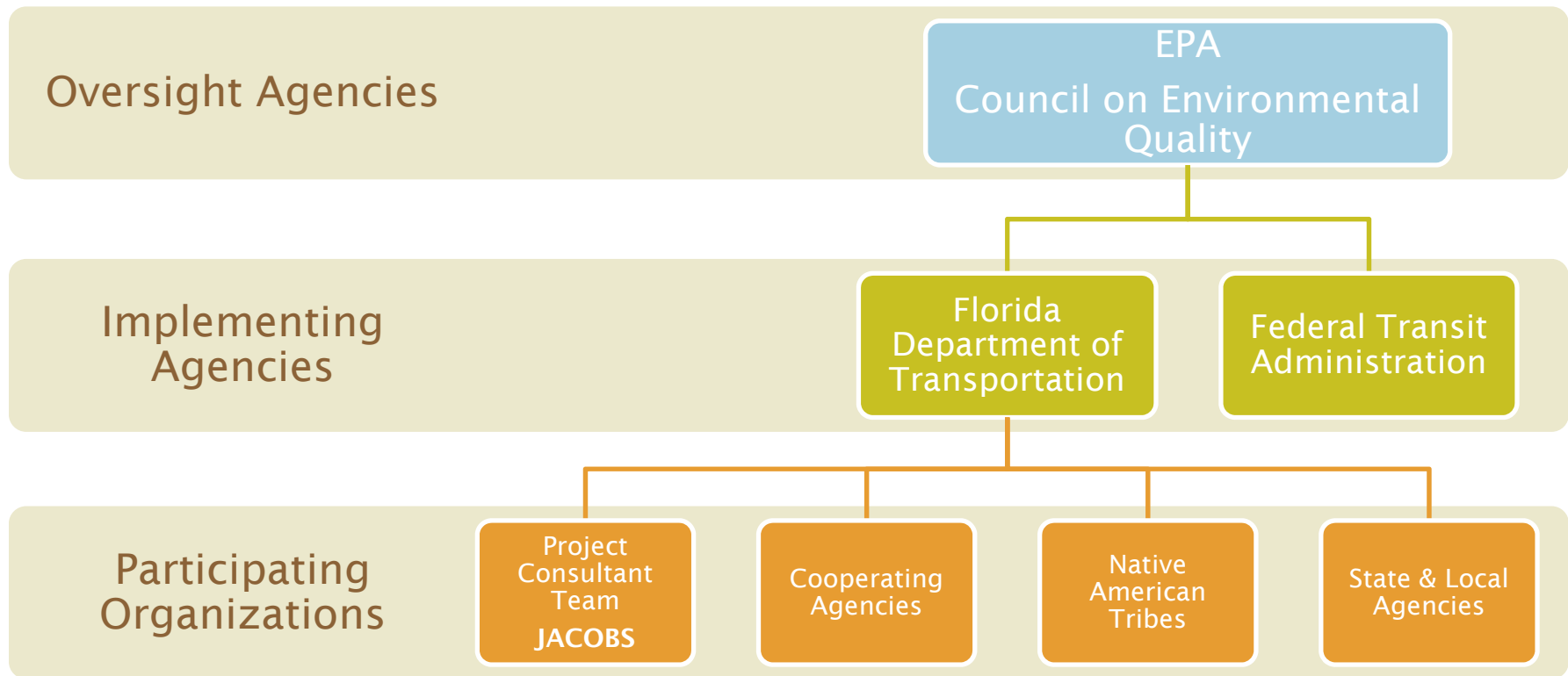


# EIS Process

- Ensures compliance with the National Environmental Policy Act of 1969
- Informs public and agencies about environmental effects of an action
- Problem-solving tool to identify impacts and possible solutions
- Allows individuals to participate in the process



# Who is involved?





# Scoping Options

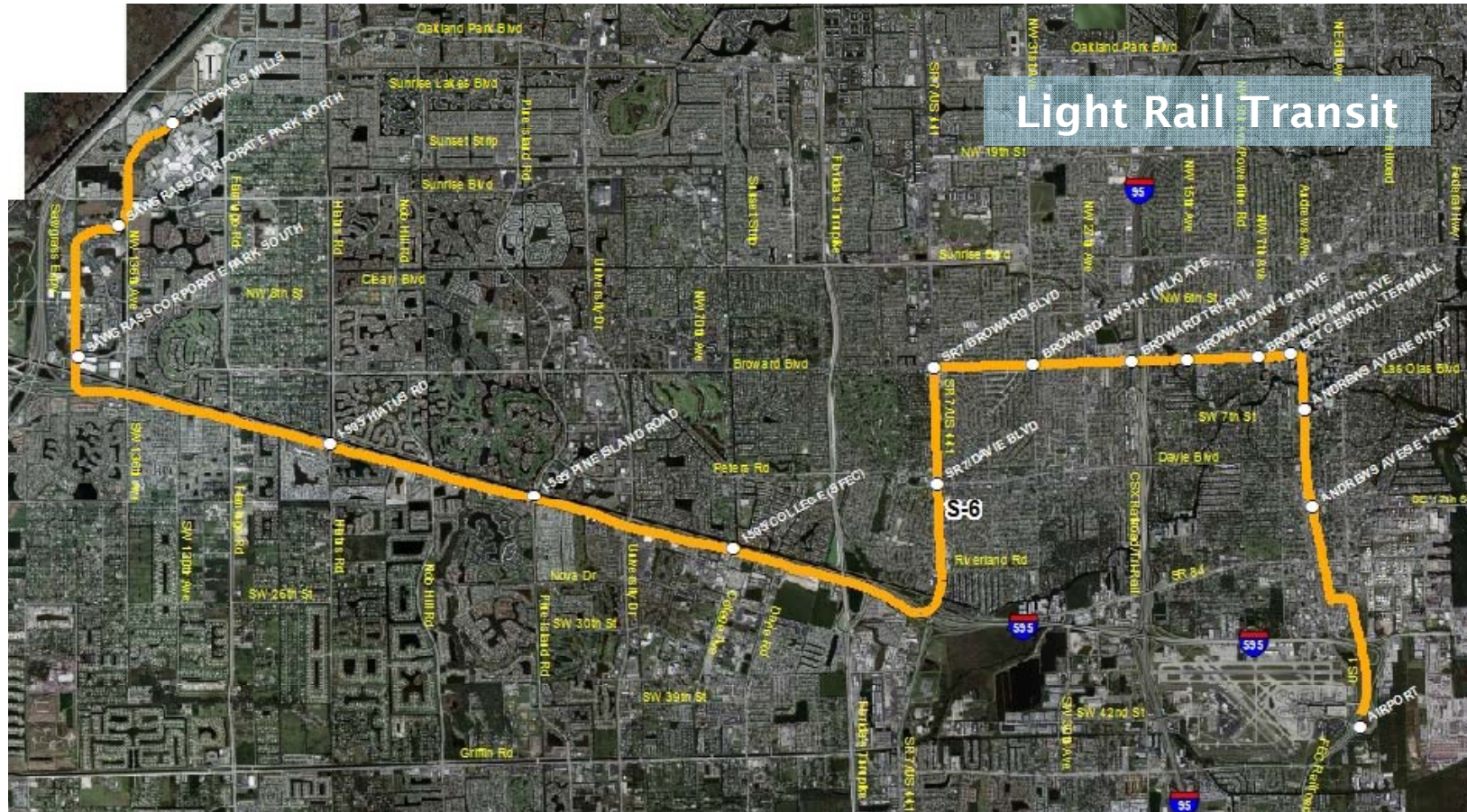
- 7 different route options
  - Includes approved Locally Preferred Alternative (LPA)
- 6 options are light rail transit
- 1 option is bus rapid transit

# Light Rail Transit





# Scoping Option 1 (LPA)

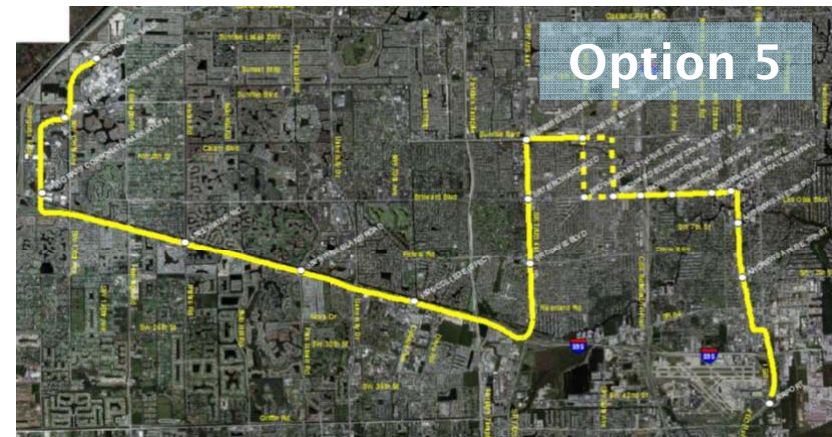
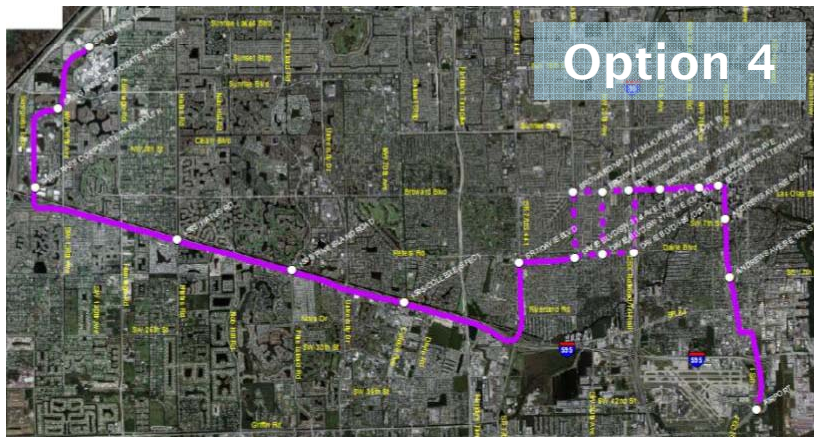
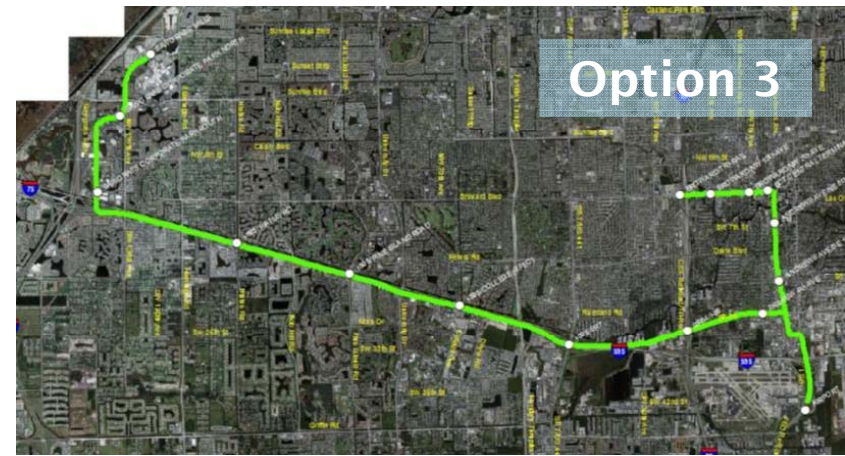
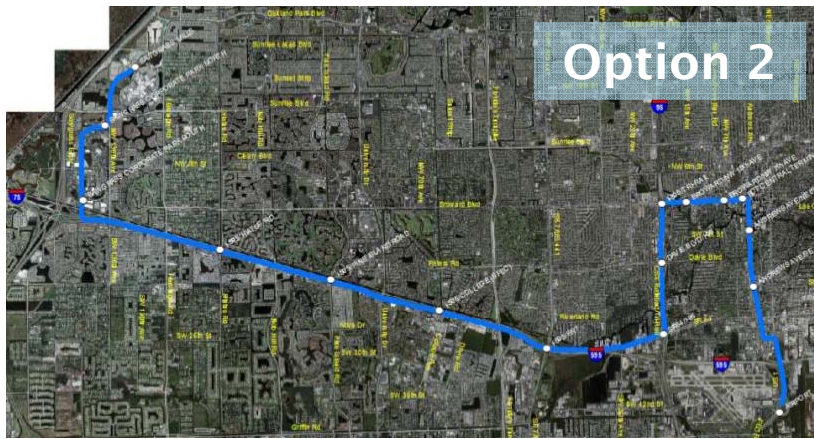


## Legend

- Potential Stations
- ∩ Scoping Option 1



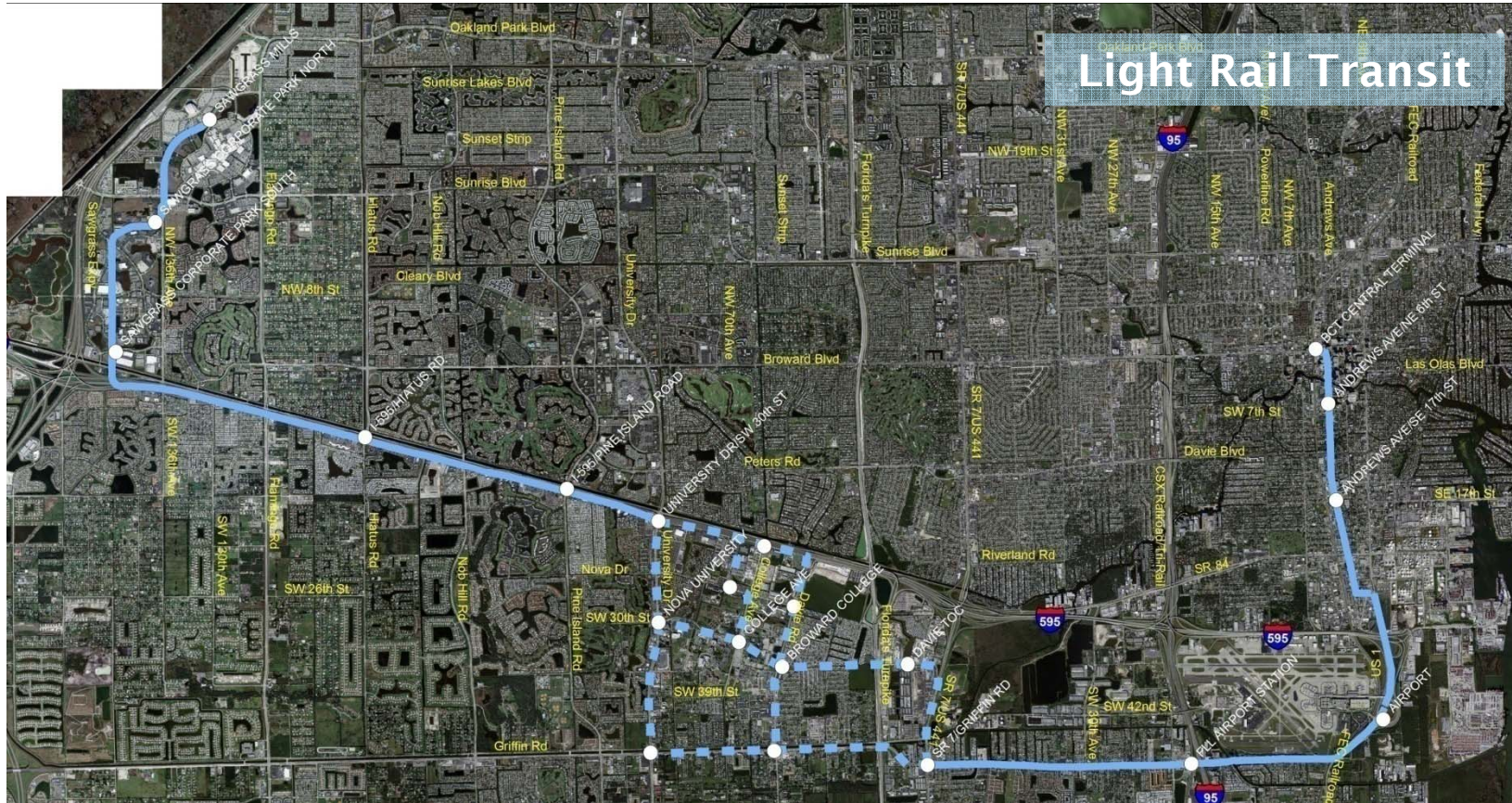
# Scoping Options 2-5



Light Rail Transit



# Scoping Option 6



## Legend

- Potential Stations
- Scoping Option 6
- - - Alternative Alignment

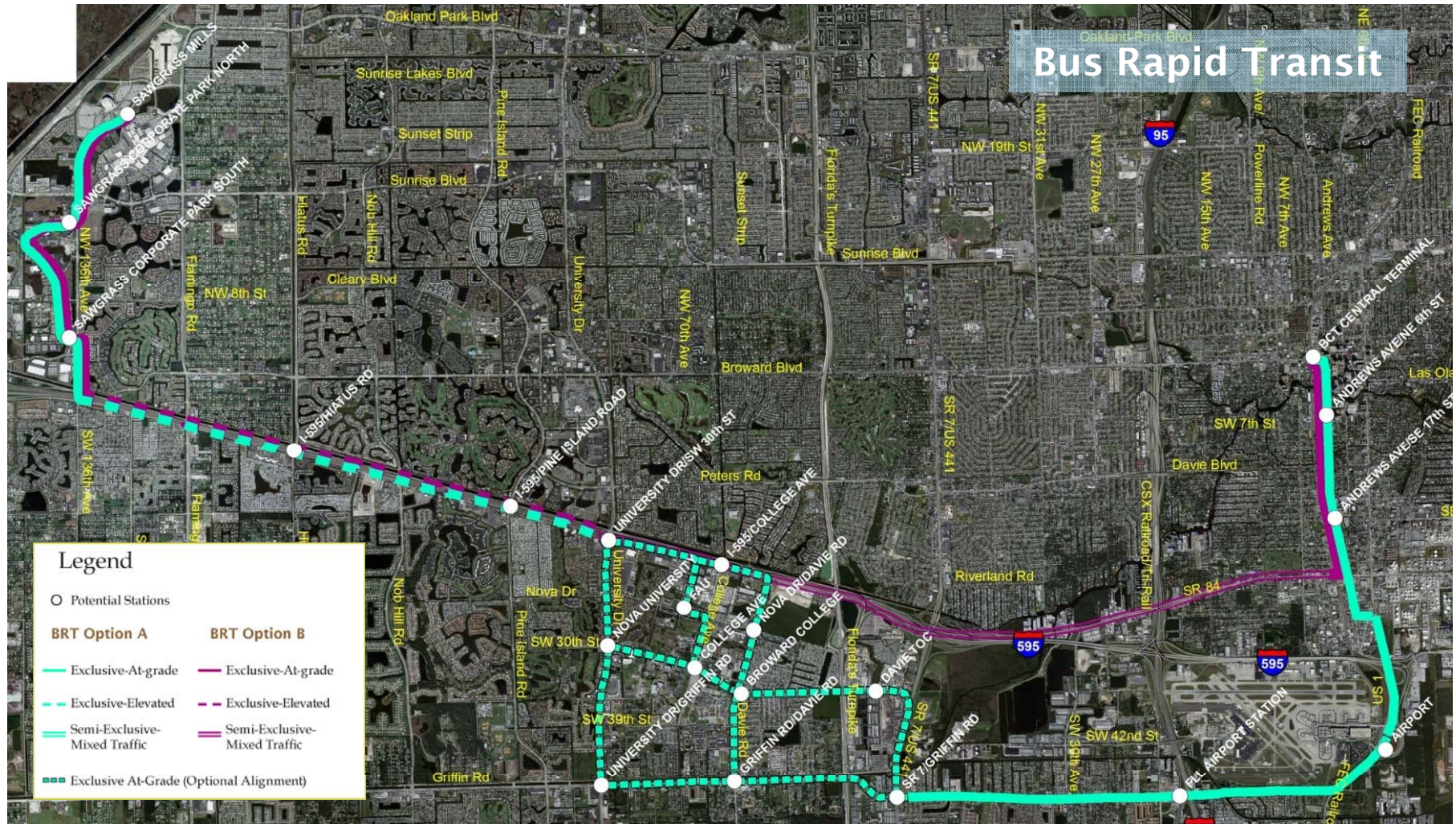


# Bus Rapid Transit





# Scoping Option 7



# Initial Screening

- Narrow from 7 to 2 options
- Criteria for evaluation:
  - Potential for environmental impacts
  - Ridership
  - Costs
  - Feasibility
  - Community acceptance
- Two build options endorsed by Broward MPO

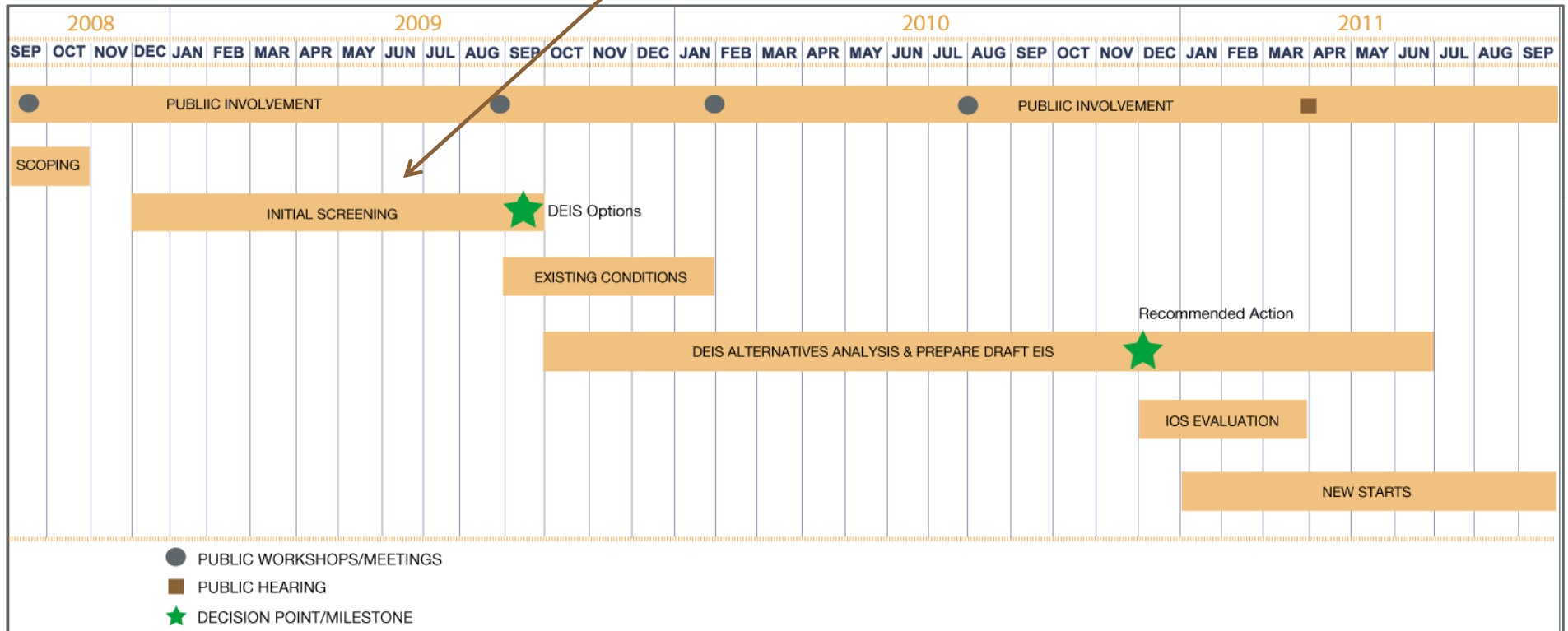


# DEIS Analyzes

- **Build:** Two of the 7 Scoping Options identified through Initial Screening
- **No Build:** Existing + committed network in the 2030 Long Range Transportation Plan
- **Transportation Systems Management (TSM):** No Build + express buses and park and ride facilities to serve the study area

# Schedule

**WE ARE HERE**



# Stakeholder Activities

- Technical Advisory Group
  - Kick-off Meeting June 24 @ 10am
- Public Workshops
  - August/September 2009
- Broward MPO Representatives
  - Mayor Anne Castro, Board Alternate District 4
  - Dominic Orlando, TCC Alternate District 4
- Website
  - [www.centralbrowardtransit.com](http://www.centralbrowardtransit.com)

# Contact Information

**Scott Seeburger**

**FDOT**

**Project Manager**

**954-777-4632**

**scott.seeburger@dot.state.fl.us**

**Zafar Alikhan**

**Jacobs**

**Project Manager**

**954-315-1025**

**zafar.alikhan@jacobs.com**