



Fort Lauderdale City Commission Transit Presentation



CITY OF FORT LAUDERDALE
PLANNING & ZONING DEPARTMENT

July 21, 2009

CAR 09-0932



Agenda

Overview

City Transit Vision

Commission Direction

2035 LRTP – Long Range Transportation Plan

THOR – Transit/Housing Oriented Redevelopment

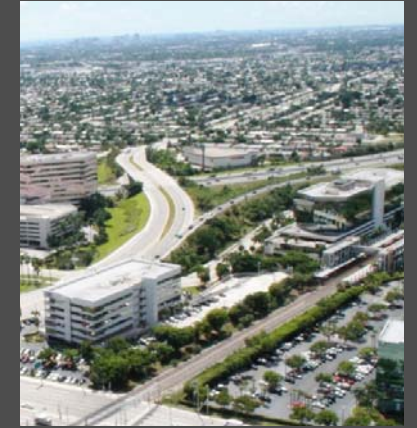
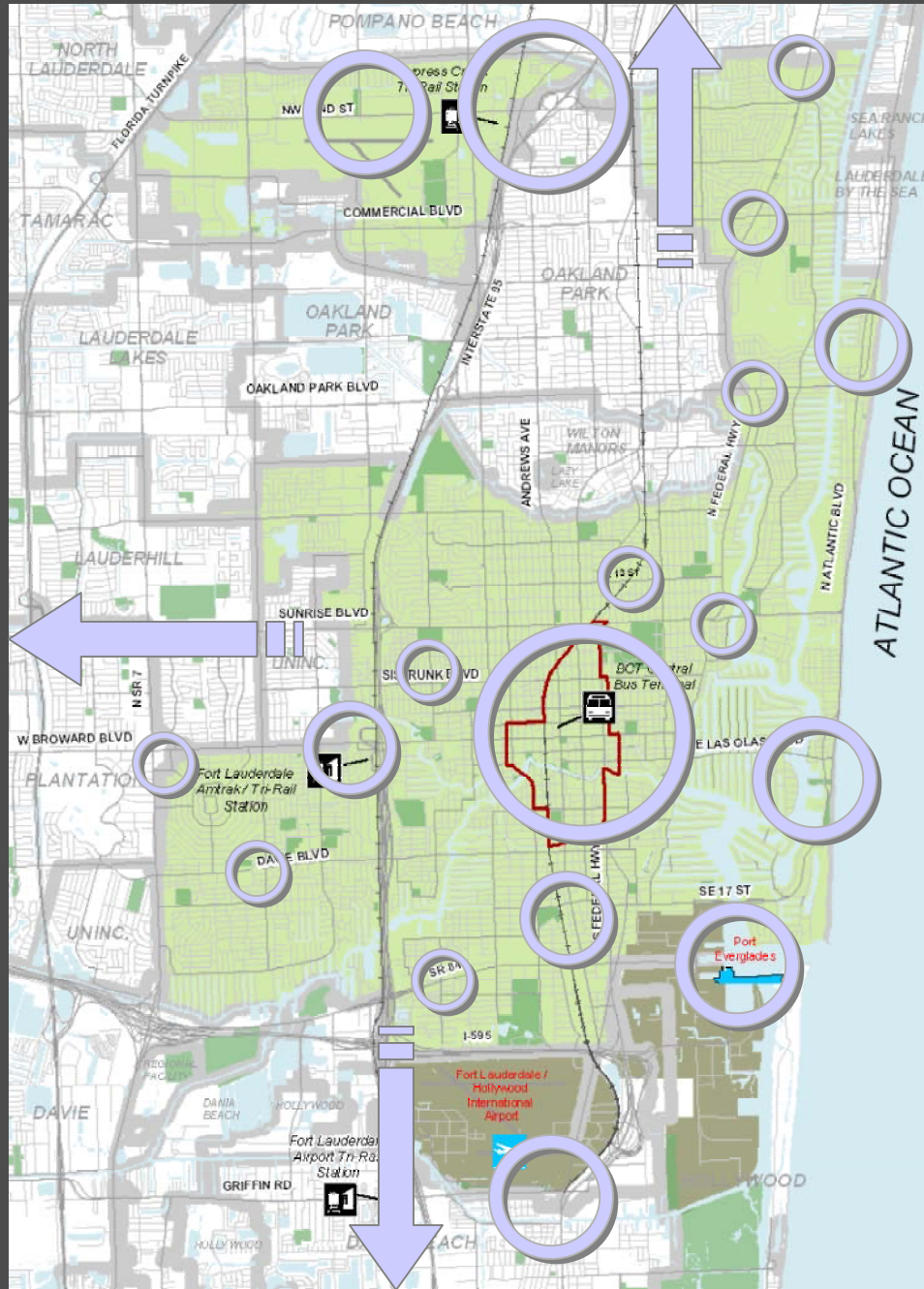
SFECC – South Florida East Coast Corridor

CBT – Central Broward Transit Study

SunPort People Mover

Commission Action

The Wave – Downtown Circulator





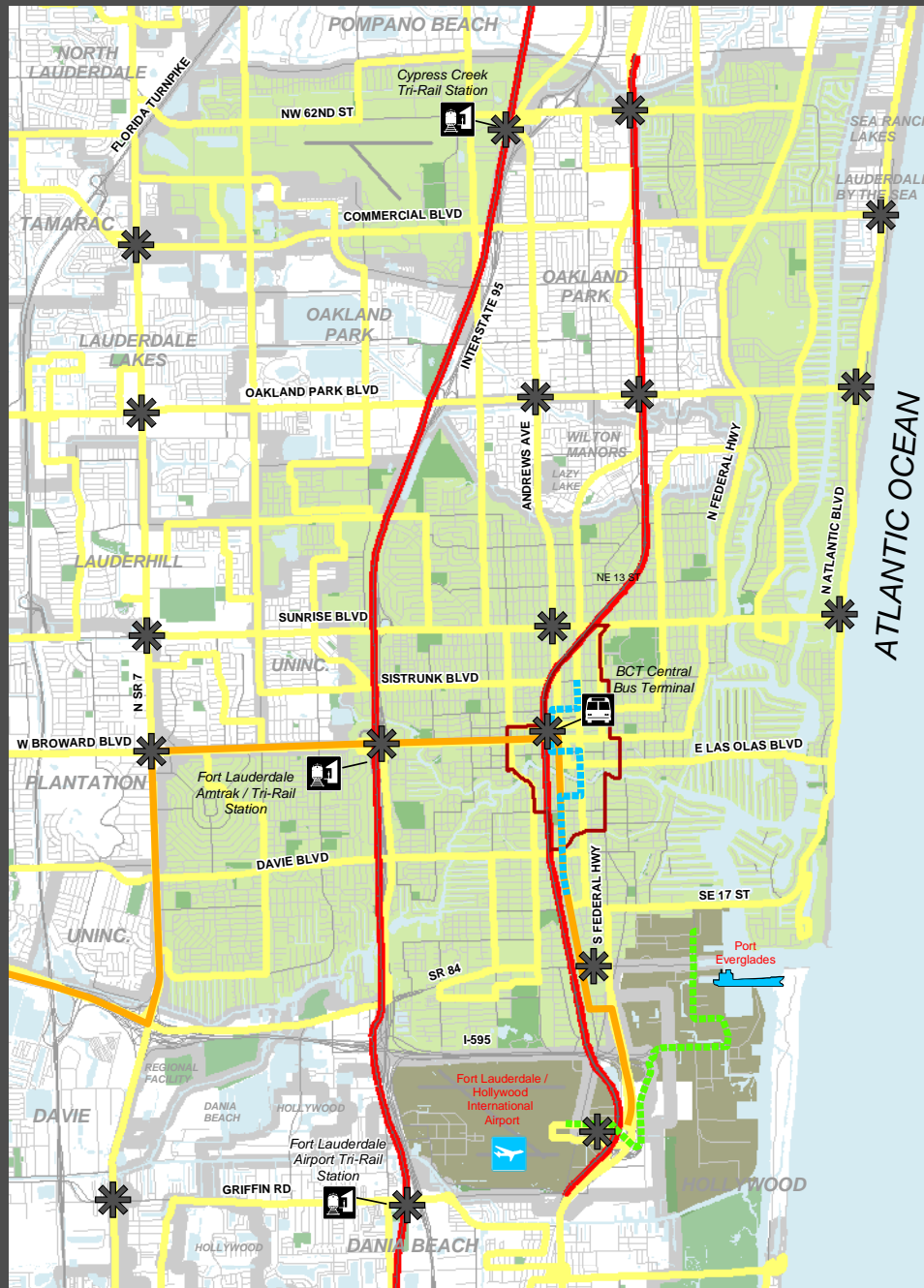
Transit Integration

Tri-Rail
(Commuter
Rail)

Central
Broward
Transit (CBT)
(Light Rail/Bus)

BCT and
TMA* Routes
(Bus)

*Downtown Fort Lauderdale
Transportation Management Assn.



Mobility
Hubs
(Stations)

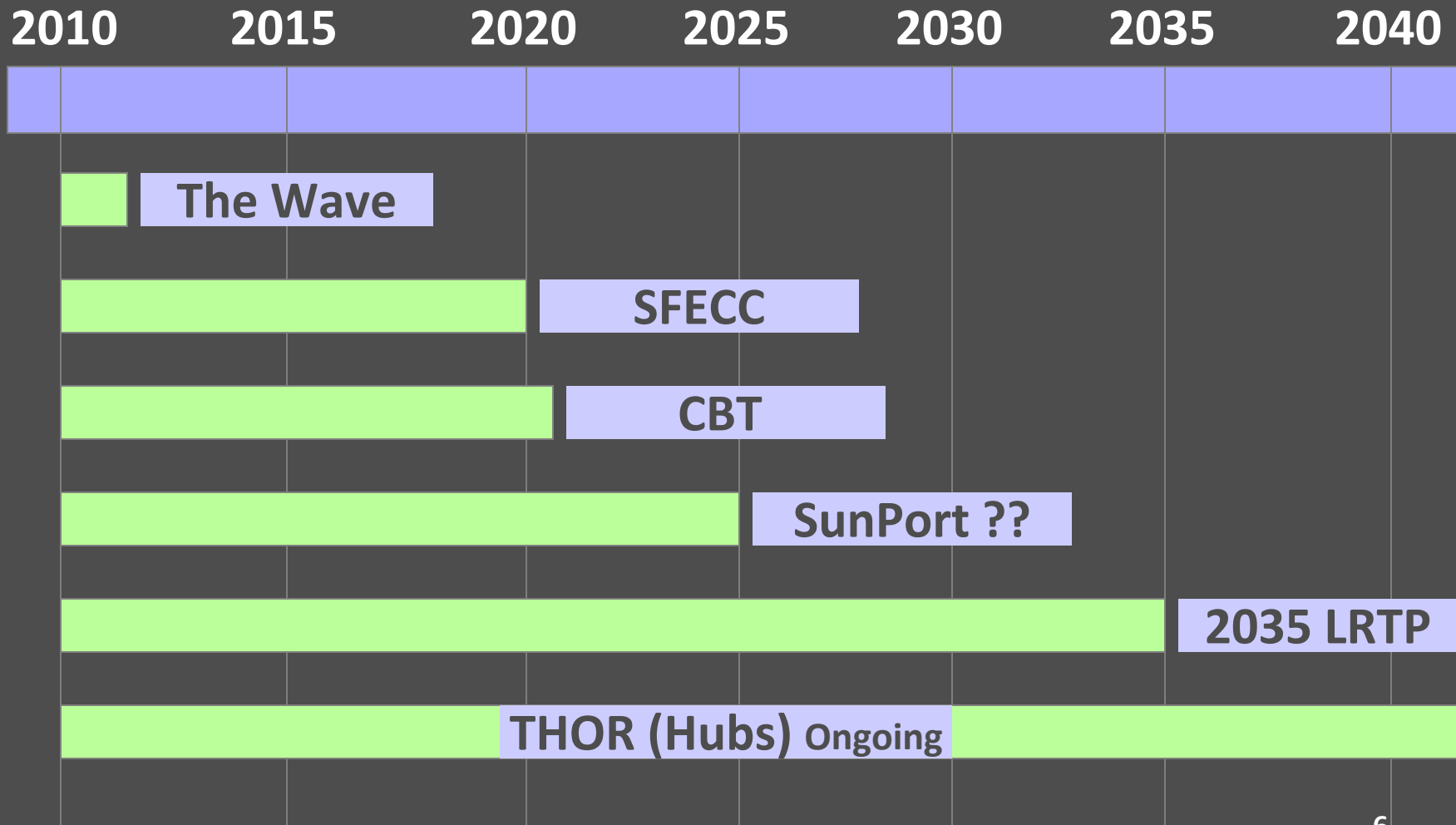
So. Fl. East
Coast
Corridor
(SFECC)
(To Be
Determined)

The Wave
(Streetcar)

SunPort
(APM*/Bus)



Implementation Schedule



CBT Central Broward Transit Study



Brief Project History

1998 – 2001

I-95/I-595 Master Plan

2002 – 2007

Alternatives Analysis (AA)

2008 – 2011

**Draft Environmental
 Impact Statement (EIS)**

WE ARE HERE

2011 – 2015

**Preliminary Engineering/
 Final EIS**

2016 – 2017

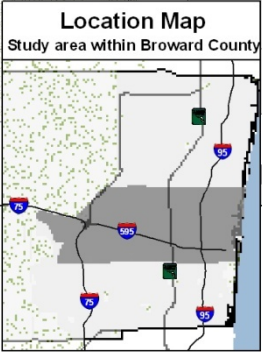
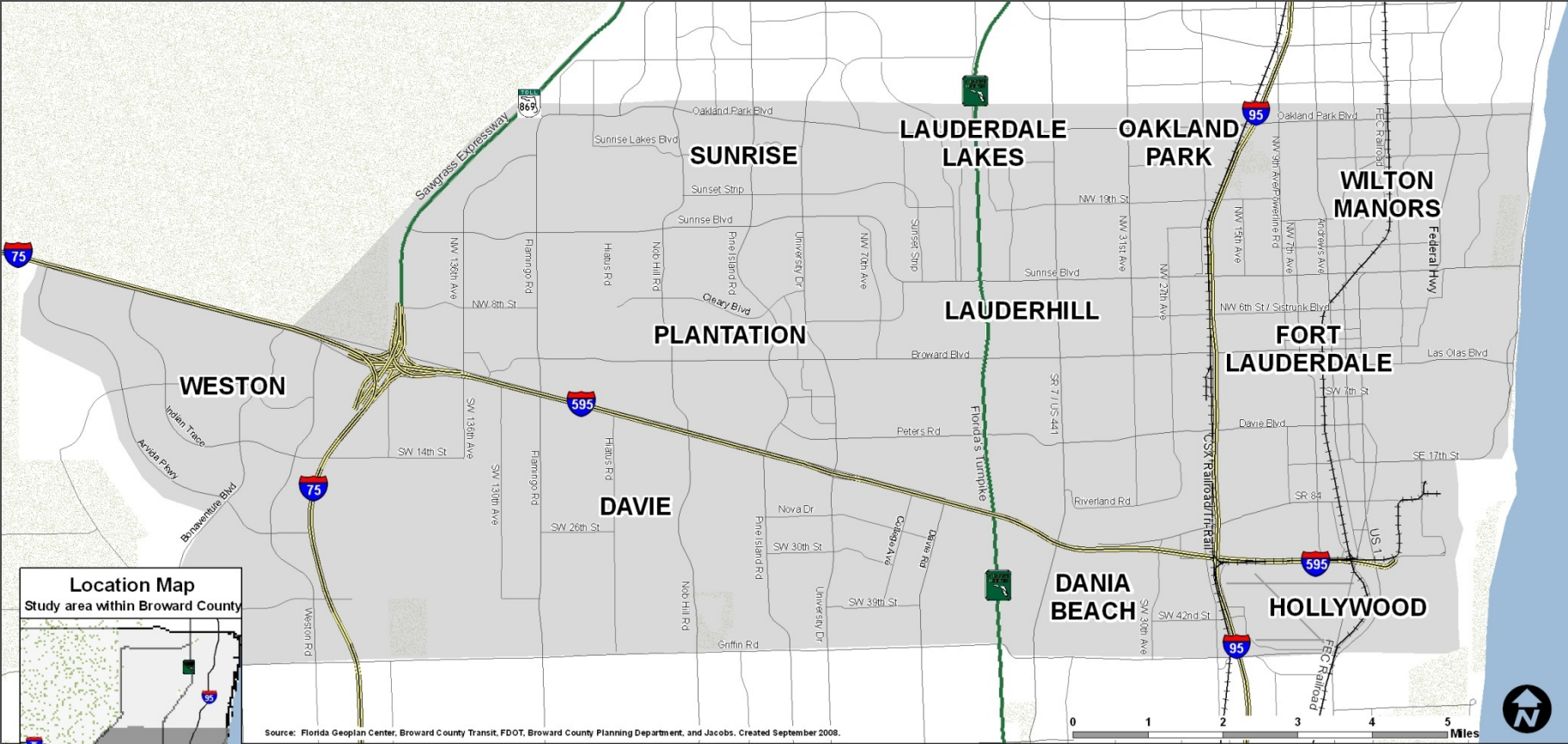
Final Design/Funding

2018 - 2021

Construction

- Initial Corridor Screening
- Definition of Alternatives
- Selection of Locally Preferred Alternative
- Environmental Impact Statement
- New Starts

Study Area



Source: Florida Geoplan Center, Broward County Transit, FDOT, Broward County Planning Department, and Jacobs. Created September 2008.

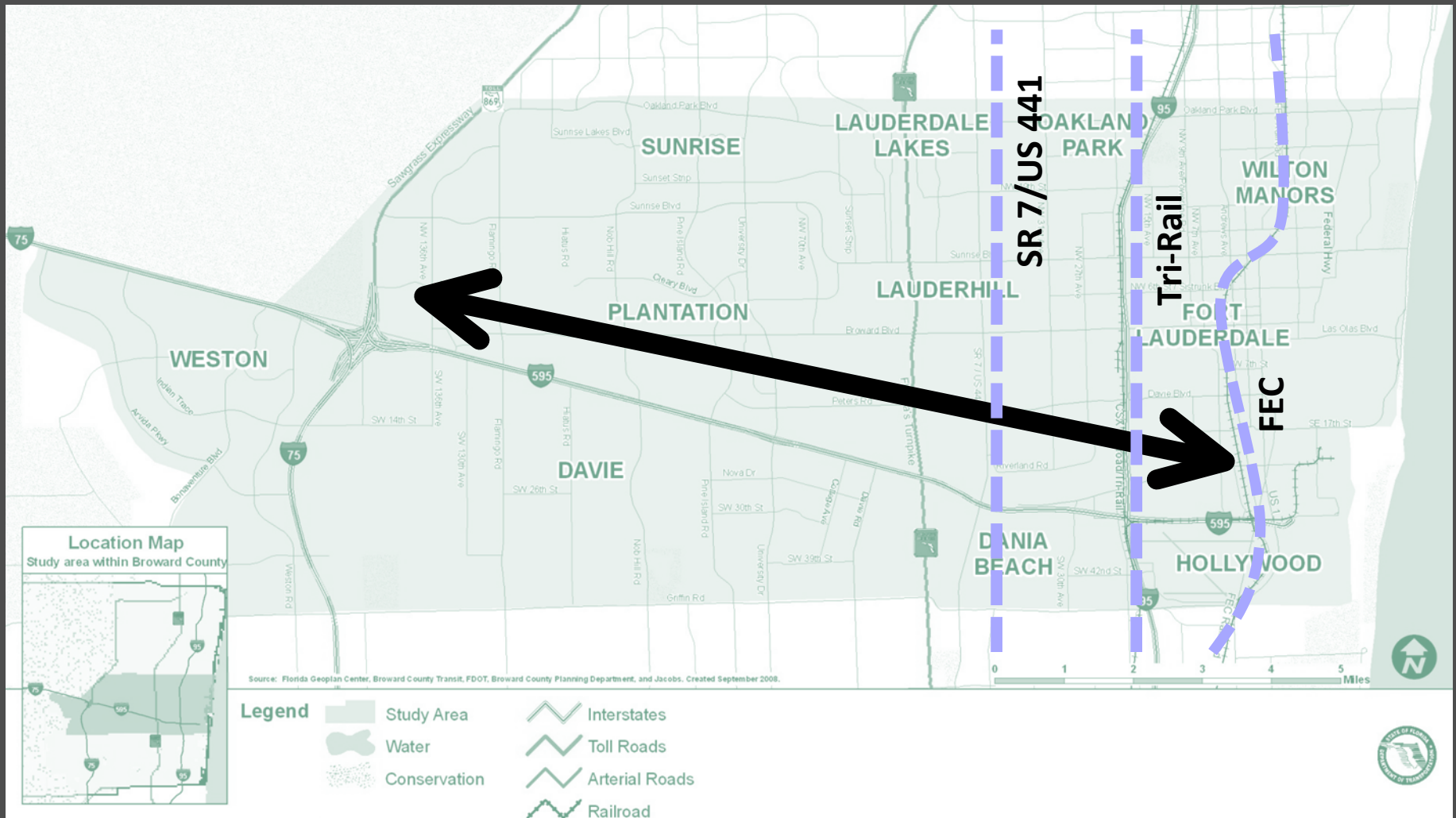
- Legend**
- Study Area
 - Water
 - Conservation
 - Interstates
 - Toll Roads
 - Arterial Roads
 - Railroad



Purpose & Need Approved by Federal Transit Administration

- **Improve air quality**
- **Provide mobility options**
- **Serve population & employment growth**
- **Mitigate increased congestion**
- **Support economic development**

Regional Connections



Scoping Options

- **Narrow to 2 options (Including route and technology)**
- **Criteria for evaluation based on project goals:**
 - Travel & Mobility
 - Financial & Economic
 - Community
 - Land Use
 - Environmental
- **Two options to be endorsed by Broward MPO**

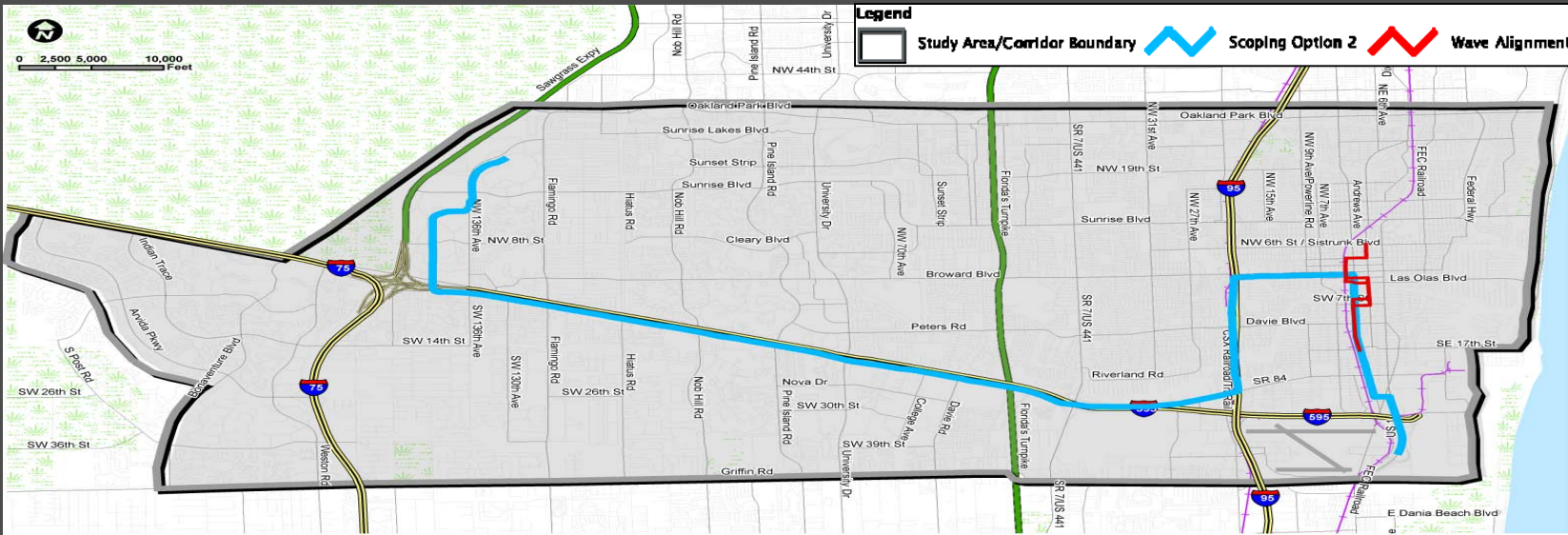
Light Rail Transit



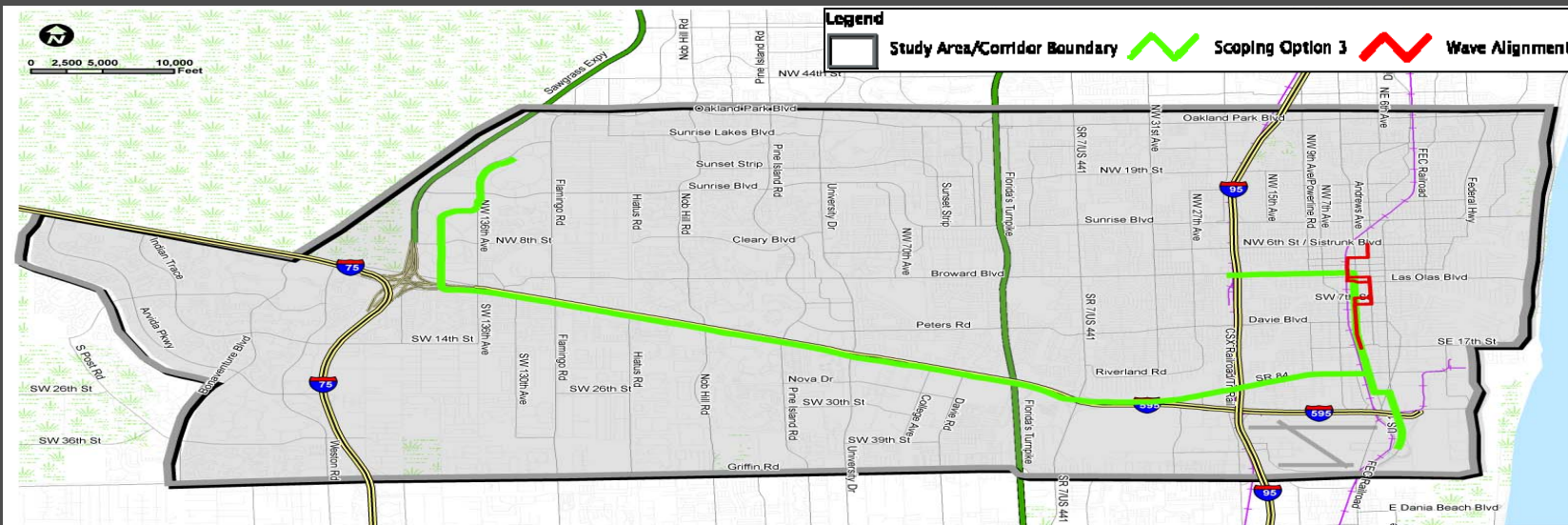
Bus Rapid Transit



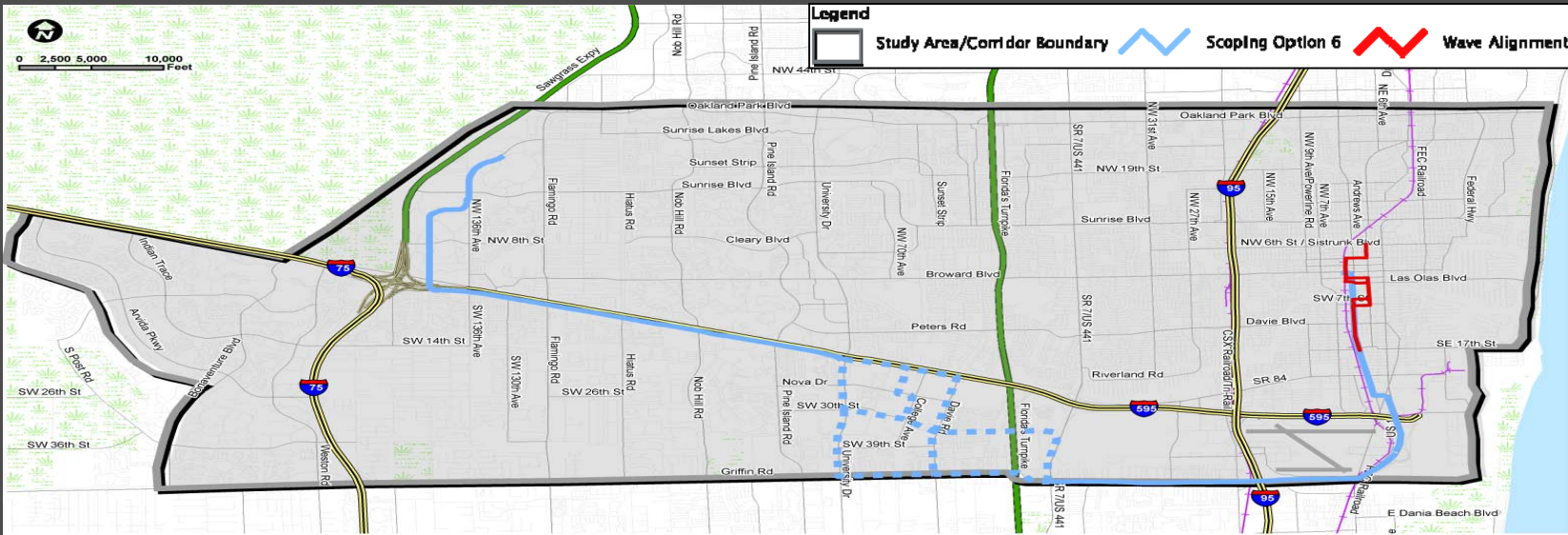
Scoping Option 2



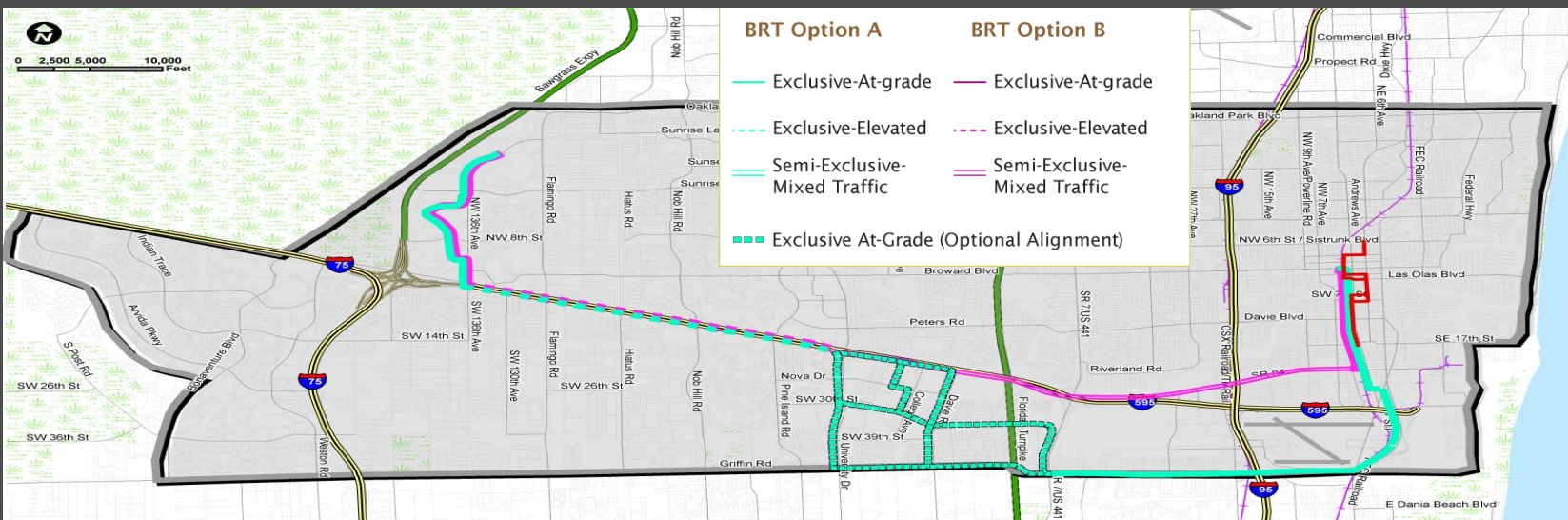
Scoping Option 3



Scoping Option 6



Scoping Option 7



Draft Environmental Impact Statement Analysis

- **Build:** Two of the 7 Scoping Options identified through Initial Screening, and additional options identified by Technical Advisory Group (TAG)
- **No Build:** Existing + committed network in the 2030 Long Range Transportation Plan
- **Transportation Systems Management (TSM):** No Build + express buses and park and ride facilities to serve the study area

Next Steps

- **Technical Advisory Group (TAG) Fall 2009**
- **Public Workshops Fall 2009**
- **Commission direction for input at TAG meetings during EIS process**



Fort Lauderdale's Transit Vision

2035 LRTP Long Range Transportation Plan

THOR Transit/Housing Oriented Redevelopment

SFECC South Florida East Coast Corridor

CBT Central Broward Transit Study

SunPort People Mover

The Wave Downtown Circulator

