

# Florida Freight Advisory Committee Meeting

July 14, 2022



**FREIGHT  
& RAIL**

# Call to Order

# Roll Call

Name	Organization Represented
John Abrams	Loves Travel Stops
Joe Arbona	Genesee Wyoming Railroad
Aubrey Brown	CSX
Gene Conrad	Lakeland Linder International Airport
William Crowe	Canaveral Port Authority
Jaha Cummings	City of Punta Gorda
Kevin Daugherty	Hernando County Airport
Laura DiBella	Florida Harbor Pilots Association
John Dohm	Florida TransAtlantic Holdings
Lauren Farrell	Space Florida
Patrick Feeney	Kenan Advantage Group
Bruce Lyon	Winter Haven Economic Development Council
Terri Malone	Escambia County
Robert Midgett	Walmart
Carol Obermeier	Southwest Florida International Airport (RSW)
Seckin Ozkul	University of South Florida (USF)
Samuel Pearson	UPS
Nick Primrose	Jacksonville Port Authority (JAXPORT)
Mike Rubin	Florida Ports Council
Tori Rumenik	Florida Fruit and Vegetable Association
Andre Samuel	Enterprise Florida Inc
Gregory Stuart	Broward Metropolitan Planning Organization
Alexander Trauger	MetroPlan Orlando
Kevin Walford	Miami-Dade Transportation Planning Organization
Desiree Ann Wood	REAL Women in Trucking, Inc.



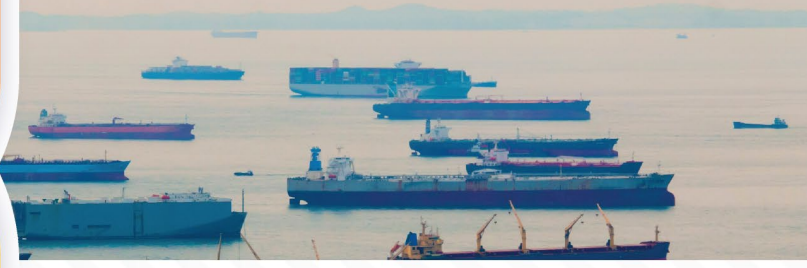
**FREIGHT  
& RAIL**

# Approval of Meeting Minutes





**STRATEGIC  
DEVELOPMENT**



July 14, 2022

# Supply Chain Strategy





# Agenda



- **Welcome & Introductions**
- **Workgroup Charge**
  - Challenges & Opportunities
  - Supply Chain Strategy
  - Setting the Stage for August 8<sup>th</sup>
- **Roundtable Discussion**
- **Closing**



# Workgroup Charge



# A Global Issue



- **The supply chain crisis is impacting all industries and economies globally**
- **Disruptions have been caused by:**
  - International trade policies
  - Evolving & shifting trade lines
  - Ukraine war
  - COVID-19 pandemic
  - Spike in consumer demand
  - Labor shortages
  - Inflation
  - Production shortage





# Impacts



- **Global challenges are impacting businesses and people**
  - Congestion at major ports and warehouses
  - Increased truck detention times, lost productivity
  - Significant cost increases
  - Empty shelves
  - Deteriorated quality of life

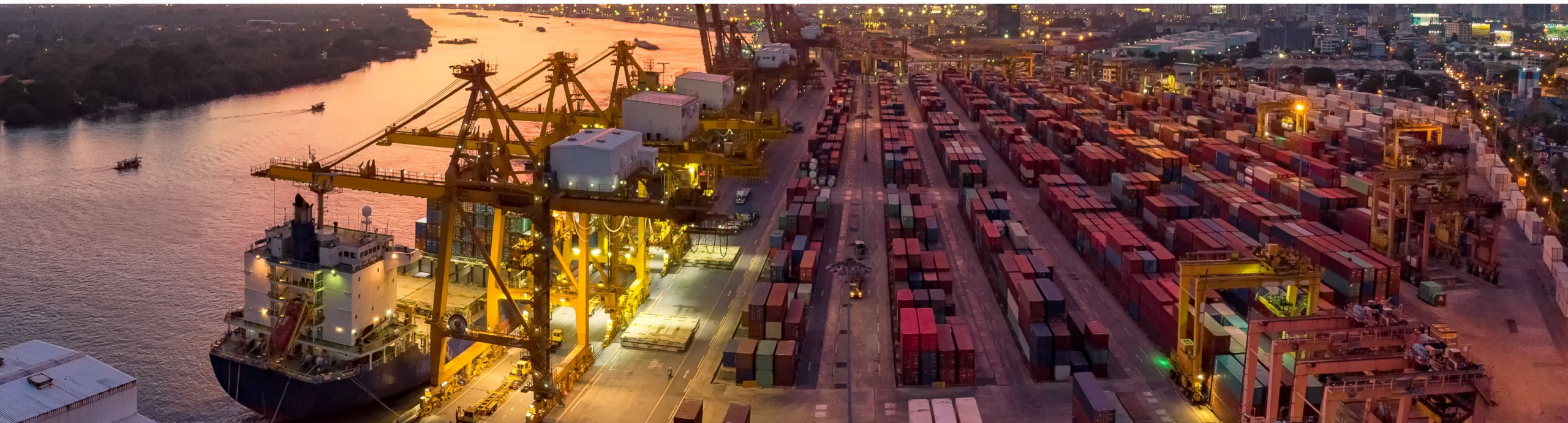




# Opportunities



- Proactively respond to near-term supply shortages
- Strategically improve long-term supply chain resiliency
- Enhance Florida's global and domestic economic competitiveness
- Improve intermodal connectivity and travel time reliability





# SUPPLY CHAIN STRATEGY







# Research



## Responses at Federal Level

**“Building Resilient Supply Chains, Revitalizing American Manufacturing, and Fostering Broad-Based Growth”**



## Responses at State Level

**“Florida Trade & Logistics 2030 Blueprint”**



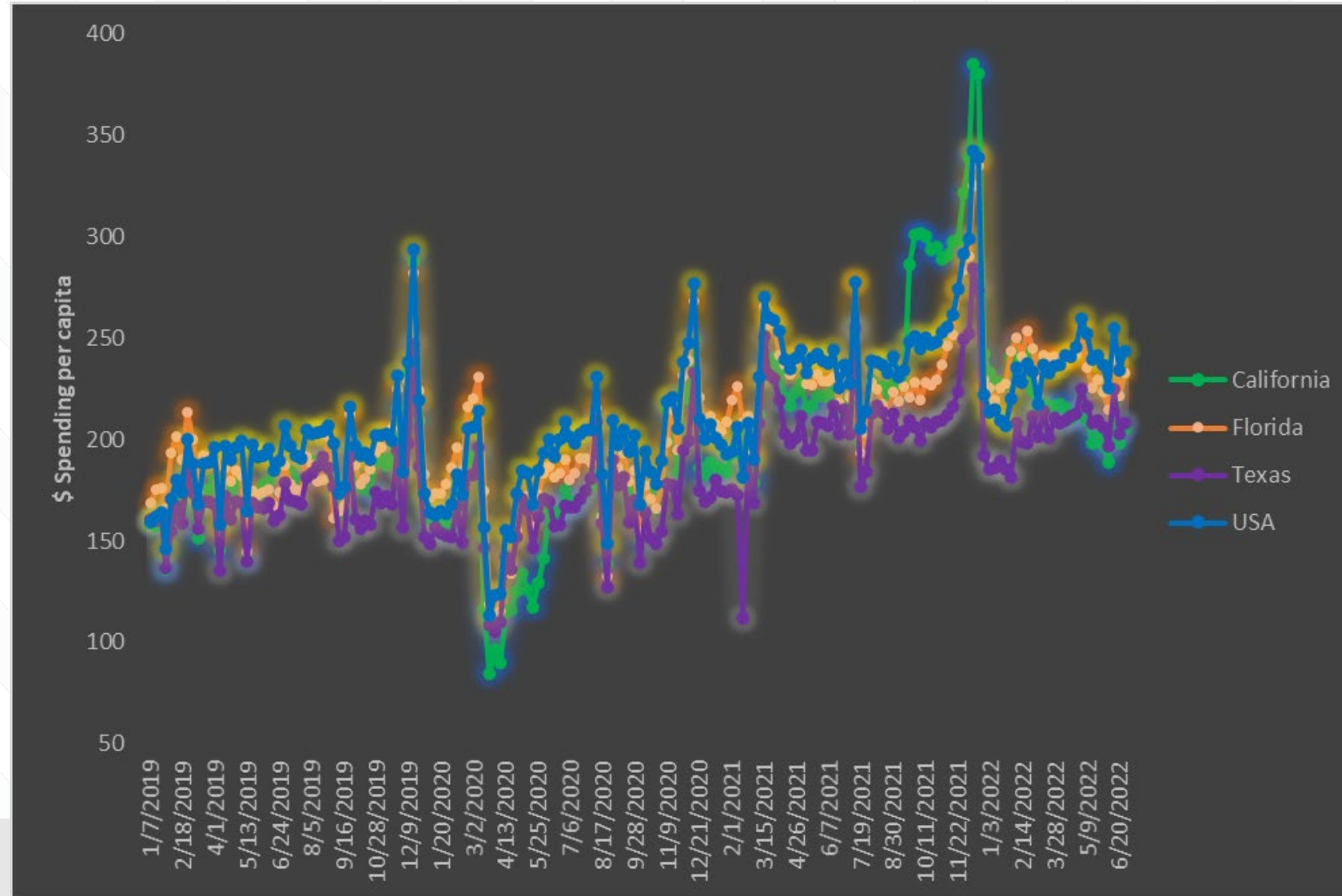
## Responses at FDOT

**Freight Mobility & Trade Plan + National Highway Freight Program**

# Analysis

- **Looking at trends**

- Online spending is trending up (graph)
- Average container vessel dwell times increased in the first half of 2021
- Percent of empty trucks has seen a decrease
- International aviation tonnage has suffered





# Collaboration



- FLFAC Workgroup August 8th
- FDOT Modal Managers meeting
- Supply Chain Summit early 2023
- Industry partners to add?



Punta Gorda

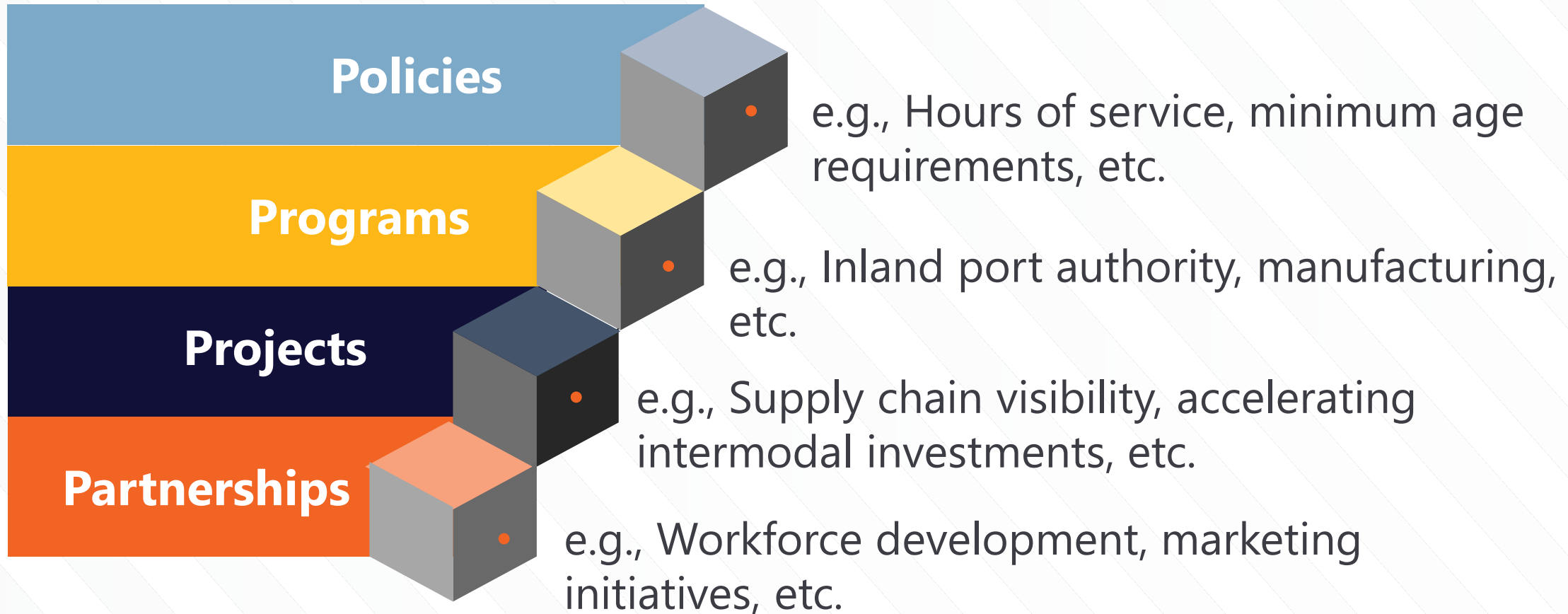
Florida's Harborside Hometown



SPACE FLORIDA



# Strategy Framework



The image features a large stack of shipping containers in various colors (blue, red, white, teal) in a port setting. A stylized chain link graphic, composed of dark blue, yellow, and orange segments, is positioned in the lower right foreground. The background is a white area with diagonal lines.


**SETTING THE  
STAGE FOR  
AUGUST 8TH**



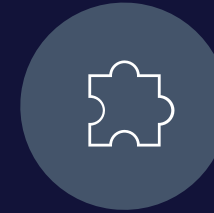
# Tentative Agenda



- **FLFAC In-Person Workshop**

- Welcome & Introductions
- Setting the Stage
- Station Activity 
- Working Session
- Presentations to the Team
- Closing

## Station Activity



*Break into small groups*



*Rotate through 4 stations (4 Ps)*



*Have facilitated conversations at each station*

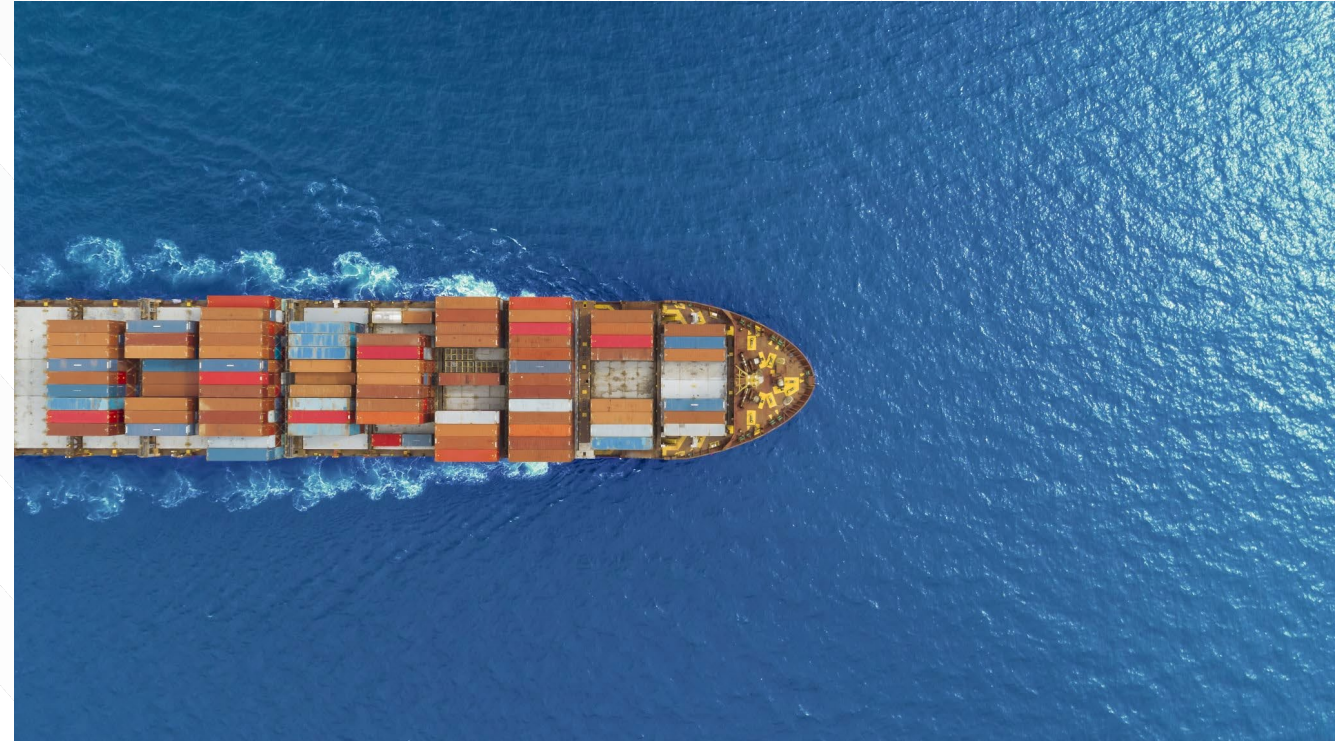


*Develop solutions*

# What We'll Need From You



- **We want you to show up on August 8th and work with us to help solve this crisis**
- **Think about strategies to inform:**
  - Policies
  - Programs
  - Projects
  - Partnerships

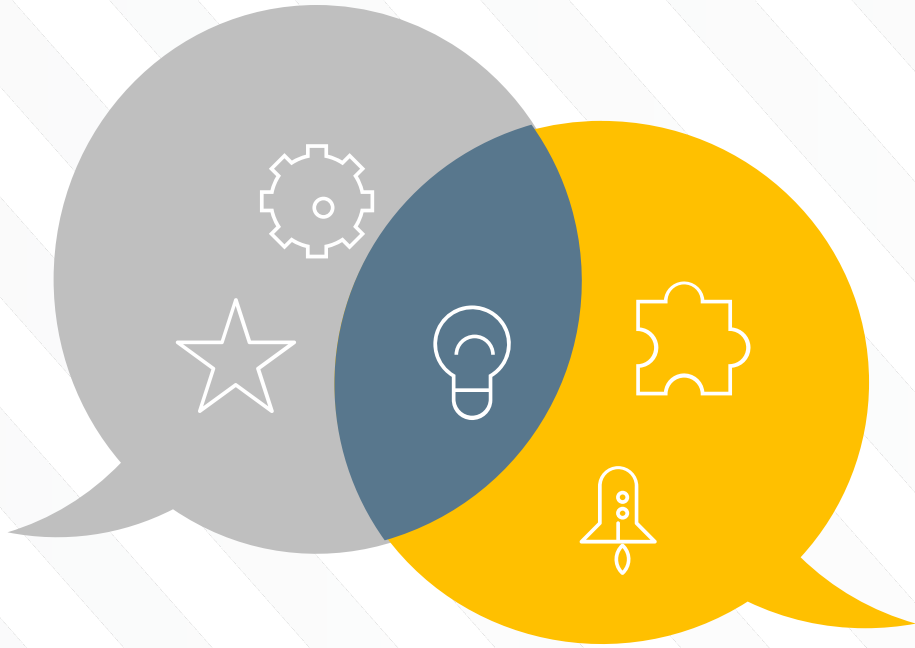






# Roundtable





- **Any general feedback?**
- **Do you think this approach is worthwhile?**
- **How is your industry being impacted?**
- **Any immediate solutions you have in mind?**

# Public Comments

# Member Comments

Name	Organization Represented
John Abrams	Loves Travel Stops
Joe Arbona	Genesee Wyoming Railroad
Aubrey Brown	CSX
Gene Conrad	Lakeland Linder International Airport
William Crowe	Canaveral Port Authority
Jaha Cummings	City of Punta Gorda
Kevin Daugherty	Hernando County Airport
Laura DiBella	Florida Harbor Pilots Association
John Dohm	Florida TransAtlantic Holdings
Lauren Farrell	Space Florida
Patrick Feeney	Kenan Advantage Group
Bruce Lyon	Winter Haven Economic Development Council
Terri Malone	Escambia County
Robert Midgett	Walmart
Carol Obermeier	Southwest Florida International Airport (RSW)
Seckin Ozkul	University of South Florida (USF)
Samuel Pearson	UPS
Nick Primrose	Jacksonville Port Authority (JAXPORT)
Mike Rubin	Florida Ports Council
Tori Rumenik	Florida Fruit and Vegetable Association
Andre Samuel	Enterprise Florida Inc
Gregory Stuart	Broward Metropolitan Planning Organization
Alexander Trauger	MetroPlan Orlando
Kevin Walford	Miami-Dade Transportation Planning Organization
Desiree Ann Wood	REAL Women in Trucking, Inc.



# Adjourn



**Rickey Fitzgerald**  
**Manager, Freight & Rail Office**  
Florida Department of Transportation

605 Suwannee Street, MS 25  
Tallahassee, FL 32399  
850.414.4702; [rickey.fitzgerald@dot.state.fl.us](mailto:rickey.fitzgerald@dot.state.fl.us)



**FREIGHT  
& RAIL**